

336000

338000

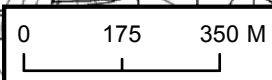
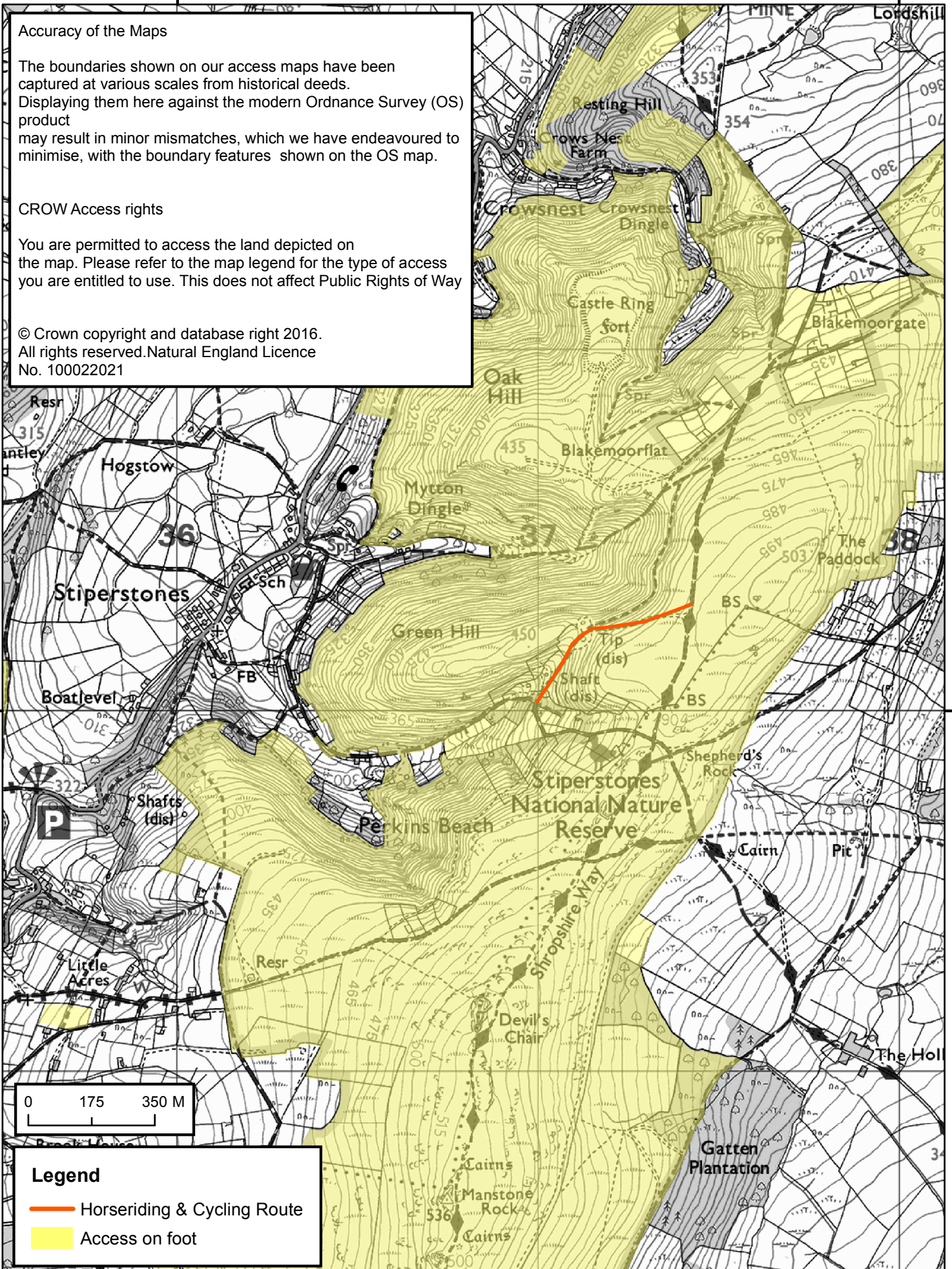
Accuracy of the Maps

The boundaries shown on our access maps have been captured at various scales from historical deeds. Displaying them here against the modern Ordnance Survey (OS) product may result in minor mismatches, which we have endeavoured to minimise, with the boundary features shown on the OS map.

CROW Access rights

You are permitted to access the land depicted on the map. Please refer to the map legend for the type of access you are entitled to use. This does not affect Public Rights of Way

© Crown copyright and database right 2016.  
All rights reserved. Natural England Licence No. 100022021



**Legend**

- Horseriding & Cycling Route
- Access on foot

336000

338000