

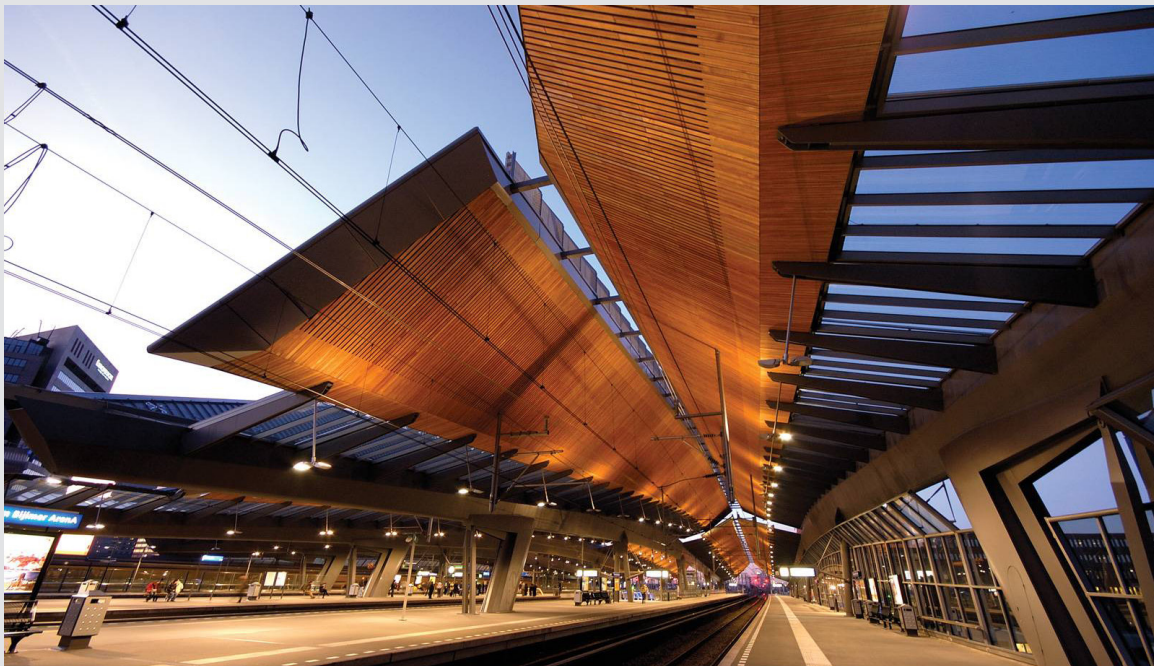
Design Panel

Remit & programme

HS2's Design Panel is set up with a mandate from government:

“Great design is essential to HS2. This vital railway is a key part of our long-term economic plan. We want HS2 to make the country proud and show the world what great British design can do.” Secretary of State for Transport, Patrick McLoughlin

The Design Panel will provide independent advice and critique of the development of HS2 to help achieve its Design Vision.



Biljmer Station, Amsterdam by Grimshaw architects. One of the bank of inspirational images from the guidelines on stations reviewed by the interim Design Panel.

This paper is a summary output from the Design Process Workshop held on 27 May, and the Design Panel Programme Workshop on 29 June.

It provides a draft remit and description of the Design Panel covering:

Principles

Service offer

Scheme selection criteria

It includes a diagram providing an overview of how Design Panel's activities integrate with HS2's design programme.

This information may be usefully read with the Design Panel Terms of Reference.



Principles

The approach and advice of Design Panel members will be:

- 1. Impartial** informed by people who are unconnected with the scheme's promoters and decision makers, and it ensures that conflicts of interest do not arise
- 2. Expert** delivered by suitably trained people who are experienced in design, who know how to criticise constructively, and whose standing and expertise is widely acknowledged
- 3. Multidisciplinary** combines the different perspectives of design and other specialist experts to provide a complete, rounded assessment
- 4. Timely** conveyed as early as possible in the design process, to avoid wasted time, as it costs less to make changes at an early stage
- 5. Advisory** inform/influence the people who make decisions
- 6. Proportionate** for projects whose significance, either at local or national level, warrants the investment needed to provide the service
- 7. Objective** based on reasoned and objective criteria rather than the stylistic tastes of individual panel members
- 8. Accessible** clearly expressed in terms that design teams, decision makers and clients can all understand and make use of
- 9. Open** conveyed in confidence to HS2, and HS2 will share the advice with external stakeholders, partners or more widely in the public domain; while HS2 will be biased to openly sharing design panel advice, the design panel will also provide a safe environment for early stage design discussions to take place in confidence
- 10. Accountable** clearly seen to work for the benefit of the programme, with a view to enabling the project team to meet the principles set out in the draft HS2 Design Vision

Based on widely accepted industry best practice: "Design Review Principles and Practice", by Design Council Cobe, Landscape Institute, Royal Town Planning Institute and the Royal Institute of British Architects.

Service offer

The Design Panel advice and support will include:

- 1. Design strategy and process**
 - pre-commissioning support on overarching HS2 strategies, visioning and brief definition
 - assessment of emerging strategies and policies
- 2. Design enabling and mentoring**
 - early engagement with consultants for informal discussion on approach and methodology
 - on-going exploration to identify opportunities for innovation and (when necessary) to unblock problems
- 3. Design Review**
 - independent assessment of design proposals by a multidisciplinary panel of experts, at key moments during design development
- 4. Design Voice**
 - expression of independent and expert views on HS2 design to reconcile conflicting priorities
 - inspire HS2 staff, contractors, designers and engineers

Scheme selection criteria

These selection criteria will be used to determine the suitability of an HS2 design projects for Design Panel input:

- 1. Scale and Use**
 - large structures with great visual impact
 - public realm or landscape schemes over a large area
 - projects above agreed capex threshold
 - all stations
- 2. Site**
 - schemes in the AONB
 - extraordinary impact on local surroundings
 - major impact on listed structures or sensitive landscapes
- 3. Precedence**
 - long term usage, requiring flexibility over the life of the project
 - setting a precedent for HS2 or other projects
 - family of solutions, e.g. surface treatment and fences
- 4. Public Benefit**
 - schemes particularly relevant to quality of everyday life
 - significant impact on passenger/people experience
 - de-risk the design development and application process
 - the project is conflicting with the design vision
 - input needed as an arbitrator on conflicting priorities
 - design panel involvement required to manage reputation and/or controversy
- 5. Potential**
 - development of unique technique or product
 - presents a design opportunity
 - design panel chair deems project important

Design Panel planning tool

This diagram is an indicative overview of the Design Panels engagement across the design activities and stages of the HS2 programme. It is designed to be a tool to help scan for projects and support the long term planning of the Design Panel.

- Design activity in five development design stages
- Opportunities for Design Panel advice and support
- Design activity during delivery of HS2 (e.g. fabrication)
- Opportunities for Design Panel input during delivery

