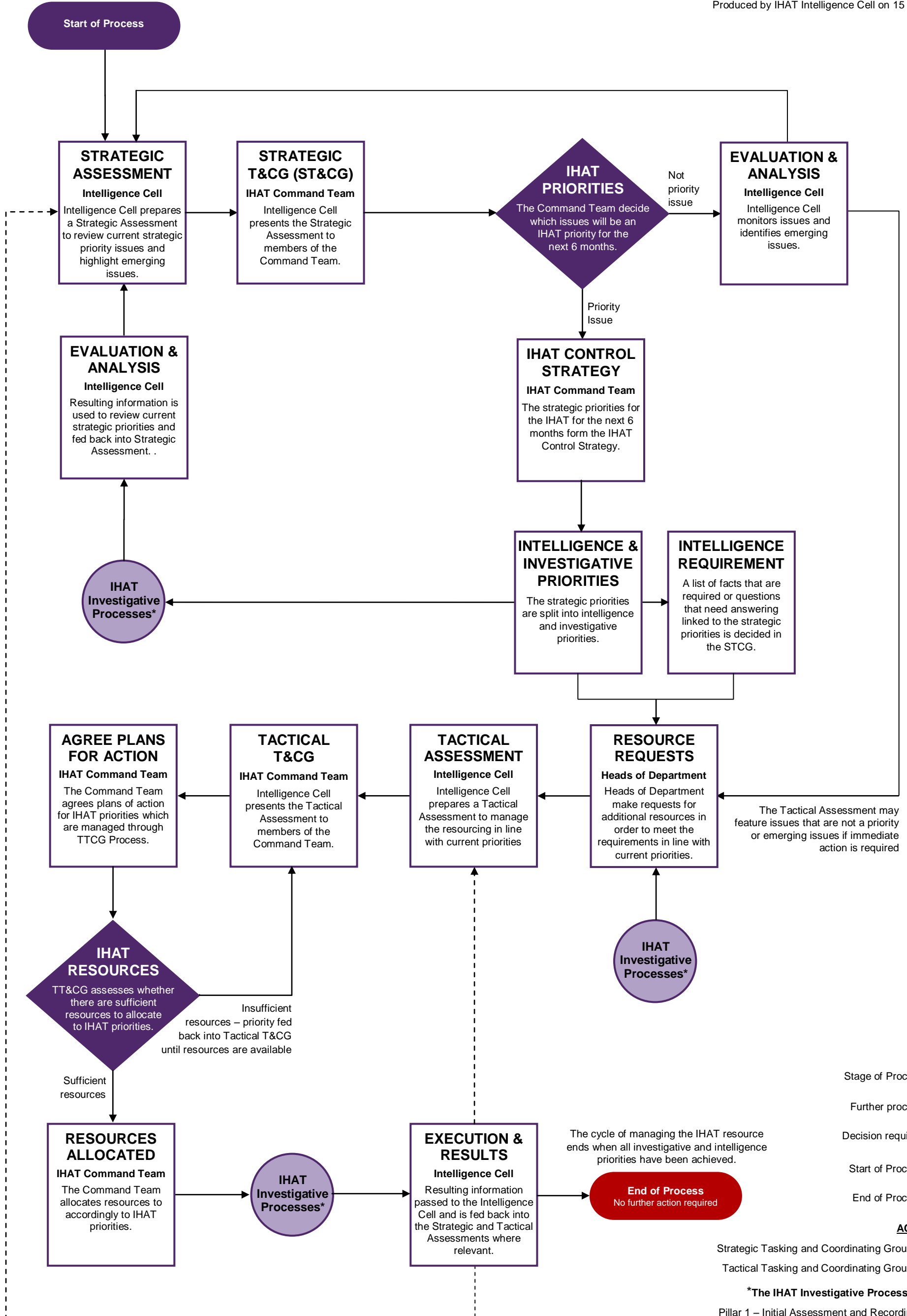


Pillar 3 - The IHAT Investigative Model Allocation of Investigative Resource v1.0

ALLEGATIONS OF UNLAWFUL KILLING AND ILL TREATMENT

Produced by IHAT Intelligence Cell on 15 Apr 2016

The cycle of managing the IHAT resource commences with the preparation of a Strategic Assessment



KEY

- Stage of Process
- Further process
- Decision required
- Start of Process
- End of Process

ACRONYMS

Strategic Tasking and Coordinating Group **STC&G**
Tactical Tasking and Coordinating Group **TTC&G**

*The IHAT Investigative Processes refer to

- Pillar 1 – Initial Assessment and Recording Process
- Pillar 2 – Pre Investigation Process
- Pillar 4 – Investigation Process
- Pillar 5 – Post Investigation Process