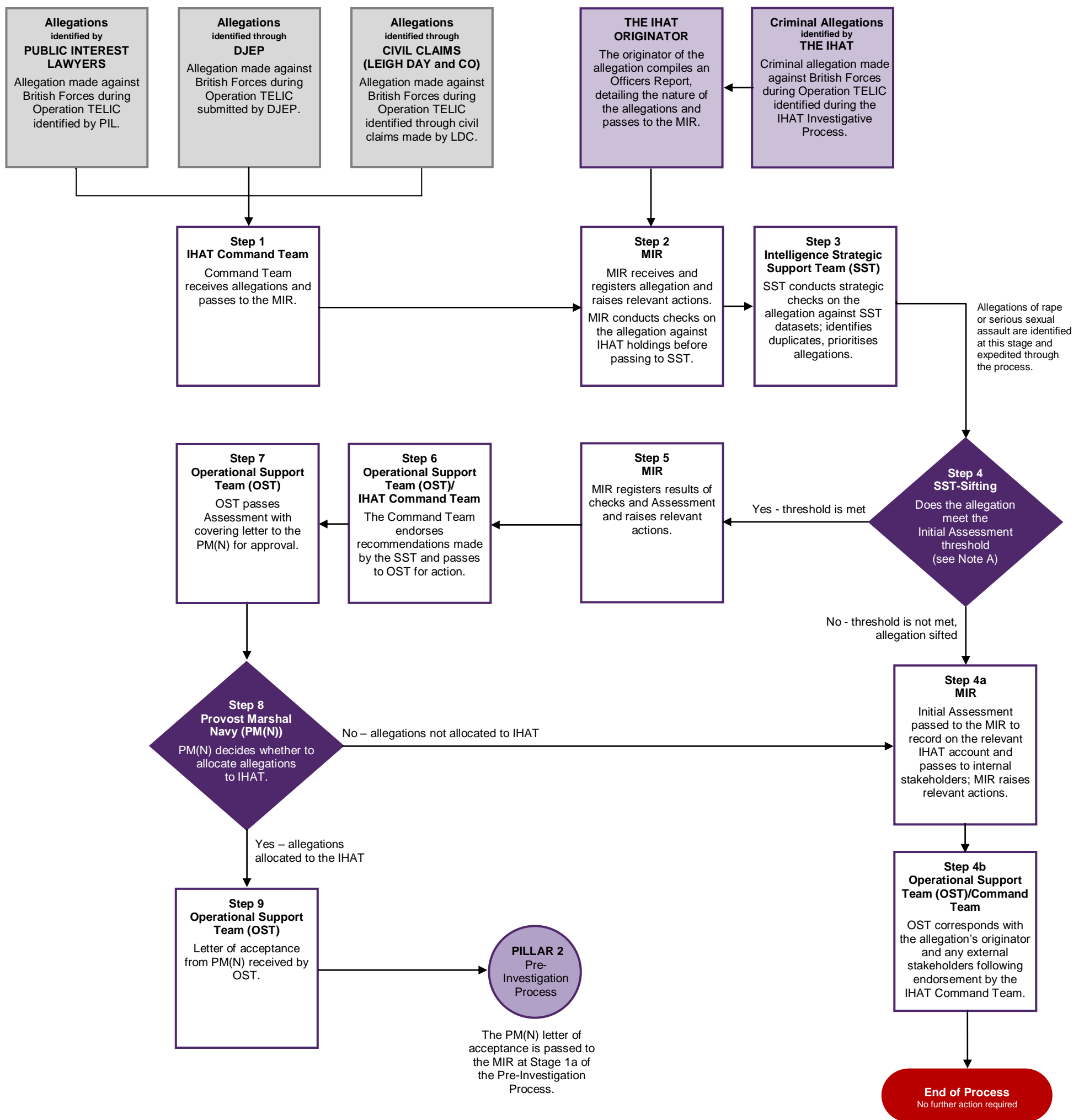


# Pillar 1 - The IHAT Investigative Model Initial Assessment and Recording v1.2

## ALLEGATIONS OF UNLAWFUL KILLING and ILL TREATMENT

Produced by IHAT Intelligence Cell on 08 Apr 2016



### ACRONYMS

<b>PIL</b>	Public Interest Lawyers
<b>LDC</b>	Leigh Day and Company
<b>OST</b>	Operational Support Team
<b>PM(N)</b>	Provost Marshal Navy
<b>MIR</b>	Major Incident Room
<b>SST</b>	Strategic Support Team
<b>SPA</b>	Service Prosecuting Authority
<b>DJEP</b>	Directorate of Judicial Engagement Policy

Note A: The threshold applied to caseloads in order is:

1. The allegation is not an existing IHAT in other words it is not part of the current IHAT caseload;
2. The allegation is not a duplicate (ie. no other complainant makes the same allegation about the same victim);
3. There is a criminal allegation

For some Caseloads, the threshold may differ dependent on the direction of the IHAT Command Team

### KEY

Stage falls within other phase of the Investigative Process	
Stage of process falls outside the IHAT	
Stage Process	
Decision point	
End of Process	
Connector	
Further IHAT process	