



Laboratory reports of *Mycoplasma pneumoniae* infection made to CIDSC from PHE and NHS laboratories in England and Wales: January 2010 to September 2015 (inclusive).

Background

These analyses are based on laboratory reports of *Mycoplasma pneumoniae* (Mpn) from January 2010 to September 2015 in England and Wales (EW), extracted from Public Health England's (PHE) voluntary surveillance database Second Generation Surveillance System (SGSS).

Laboratory reports included were limited to the following methods and samples:

- Serological methods: on blood, serum or plasma
- Genomic methods, including polymerase chain reaction (PCR): on blood, serum, plasma, throat, nose/nasal, bronchial, upper respiratory tract, broncho-alveolar lavage (BAL), alveolar, naso-pharyngeal aspirate (NPA), endotracheal aspirate, trachea or sputum

The data presented here may differ in some instances from those in earlier publications, partly due to the inclusion of late reports.

Rates of laboratory detection were calculated using mid-year resident population estimates for the respective year [1]. Geographical analyses were based on location of the reporting laboratory.

It is recommended that results from serological analyses are interpreted with caution, as genomic methods are considered to produce a more robust indication of acute infection.

Overall Mpn cases reported: January 2010 to September 2015

Table 1: Cases of Mpn reported, by genomic methods.

| Year | Cases | Gender | | | Overall rate of detection/million population |
|-------|-------|--------|--------|---------|--|
| | | Male | Female | Unknown | |
| 2010 | 2 | 0 | 2 | 0 | 0.04 |
| 2011 | 10 | 8 | 0 | 2 | 0.18 |
| 2012 | 14 | 7 | 7 | 0 | 0.25 |
| 2013 | 8 | 4 | 4 | 0 | 0.14 |
| 2014 | 52 | 29 | 23 | 0 | 0.91 |
| 2015* | 102 | 46 | 56 | 0 | 2.37 |

*Includes data up to the end of September 2015 only

Table 2: Cases of Mpn reported, by serological methods.

| Year | Cases | Gender | | | Overall rate of detection/million population |
|-------|-------|--------|--------|---------|--|
| | | Male | Female | Unknown | |
| 2010 | 501 | 240 | 255 | 6 | 9.01 |
| 2011 | 564 | 264 | 293 | 7 | 10.04 |
| 2012 | 644 | 322 | 314 | 8 | 11.38 |
| 2013 | 462 | 230 | 230 | 2 | 8.11 |
| 2014 | 377 | 182 | 193 | 2 | 6.57 |
| 2015* | 295 | 152 | 143 | 0 | 6.85 |

*Includes data up to the end of September 2015 only

Table 3: Cases of Mpn by age group, reported by genomic methods.

| Year | Number of cases per age group in years (%) | | | | | | | Total cases |
|-------|--|-------------|-------------|--------------|-------------|------------|------------|-------------|
| | 0-4 | 5-9 | 10-14 | 15-44 | 45-64 | 65+ | Unknown | |
| 2010 | 1 (50.0) | 0 (0.0) | 0 (0.0) | 0 (0.0) | 1 (50.0) | 0 (0.0) | 0 (0.0) | 2 |
| 2011 | 1 (10.0) | 2 (20.0) | 0 (0.0) | 4 (40.0) | 3 (30.0) | 0 (0.0) | 0 (0.0) | 10 |
| 2012 | 3 (21.4) | 3 (21.4) | 0 (0.0) | 6 (42.9) | 1 (7.1) | 1 (7.1) | 0 (0.0) | 14 |
| 2013 | 2 (25.0) | 0 (0.0) | 1 (12.5) | 3 (37.5) | 2 (25.0) | 0 (0.0) | 0 (0.0) | 8 |
| 2014 | 20 (38.5) | 9 (17.3) | 0 (0.0) | 19 (36.5) | 3 (5.8) | 1 (1.9) | 0 (0.0) | 52 |
| 2015* | 36 (35.3) | 7 (6.9) | 5 (4.9) | 37 (36.3) | 9 (8.8) | 8 (7.8) | 0 (0.0) | 102 |

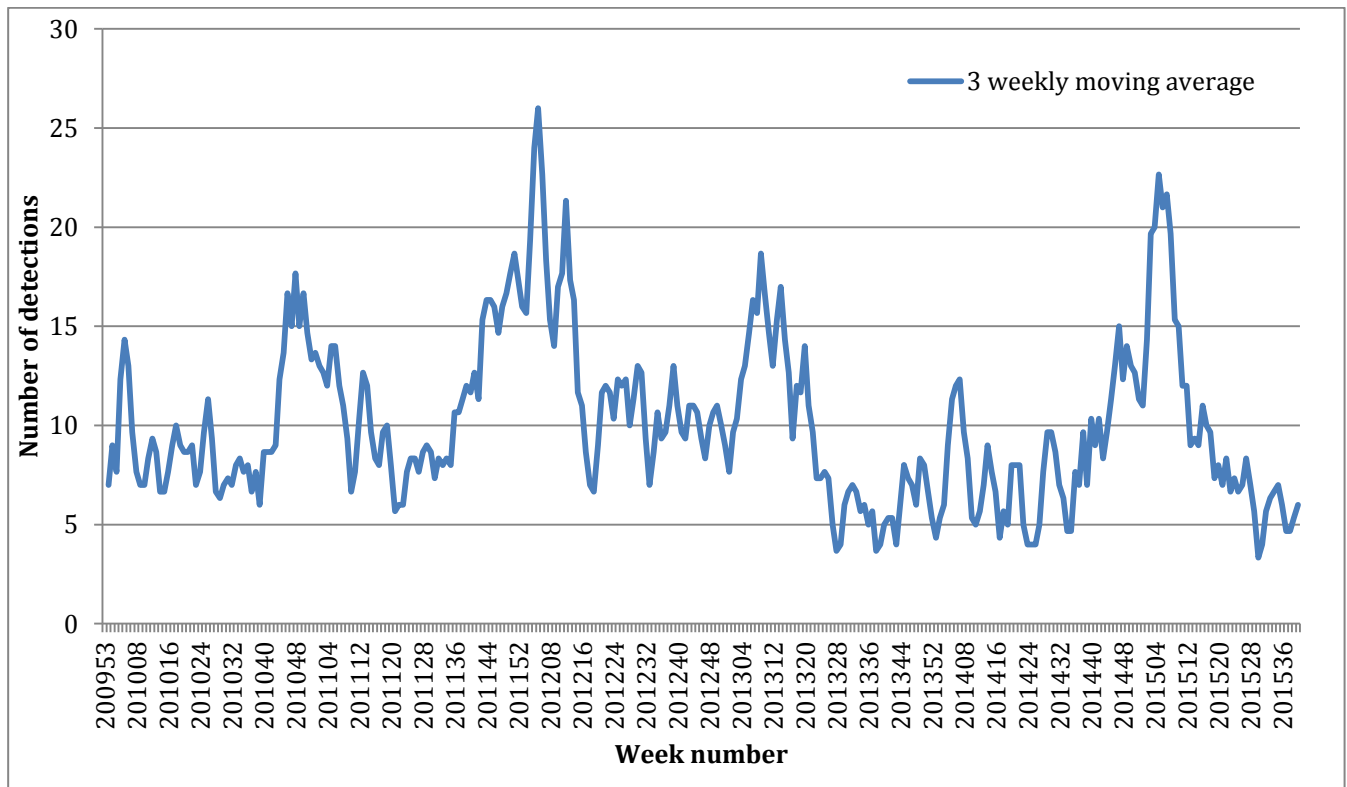
*Includes data up to the end of September 2015 only

Table 4: Cases of Mpn by age group, reported by serological methods.

| Year | Number of cases per age group in years (%) | | | | | | | Total cases |
|-------|--|---------------|--------------|---------------|---------------|--------------|------------|-------------|
| | 0-4 | 5-9 | 10-14 | 15-44 | 45-64 | 65+ | Unknown | |
| 2010 | 64 (12.8) | 75 (15.0) | 55 (11.0) | 194 (38.7) | 79 (15.8) | 34 (6.8) | 0 (0.0) | 501 |
| 2011 | 63 (11.2) | 101 (17.9) | 65 (11.5) | 216 (38.3) | 69 (12.2) | 49 (8.7) | 1 (0.2) | 564 |
| 2012 | 79 (12.5) | 80 (12.4) | 65 (10.1) | 237 (36.8) | 115 (17.9) | 68 (10.6) | 0 (0.0) | 644 |
| 2013 | 33 (7.1) | 54 (11.7) | 41 (8.9) | 151 (32.7) | 102 (22.1) | 81 (17.5) | 0 (0.0) | 462 |
| 2014 | 27 (7.2) | 36 (9.5) | 27 (7.2) | 152 (40.3) | 60 (15.9) | 74 (19.6) | 1 (0.3) | 377 |
| 2015* | 19 (6.4) | 35 (11.9) | 22 (7.5) | 119 (40.3) | 59 (20.0) | 41 (13.9) | 0 (0.0) | 295 |

*Includes data up to the end of September 2015 only

Figure 1: Laboratory detection of Mpn in England and Wales (3-weekly moving average from January 2010 to September 2015).



Acknowledgements

This report is only made possible by the weekly contributions from microbiology colleagues in laboratories across England and Wales.

References

1. Office for National Statistics (ONS) mid-year population estimates for England and Wales, <http://www.ons.gov.uk/ons/rel/pop-estimate/population-estimates-for-uk--england-and-wales--scotland-and-northern-ireland/index.html>.

First published: February 2016

© Crown copyright 2016

Re-use of Crown copyright material (excluding logos) is allowed under the terms of the Open Government Licence, visit www.nationalarchives.gov.uk/doc/open-government-licence/version/2/ for terms and conditions.