

**WASTE PACKAGE SPECIFICATION AND
GUIDANCE DOCUMENTATION**

**WPS/601: Lifting Frame for side lifting variant of
3 cubic metre Box and 3 cubic metre Drum Waste
Packages: Description and Design Guidelines**

**March 2008
Number: 8765880**

**WASTE PACKAGE SPECIFICATION AND
GUIDANCE DOCUMENTATION**

**WPS/601: Lifting Frame for side lifting variant of
3 cubic metre Box and 3 cubic metre Drum Waste
Packages: Description and Design Guidelines**

**March 2008
Number: 8765880**

Conditions of Publication

This report is made available under the NDA Transparency Policy. In line with this policy, the NDA is seeking to make information on its activities readily available, and to enable interested parties to have access to and influence on its future programmes. The report may be freely used for non-commercial purposes. However, all commercial uses, including copying and re-publication, require permission from the NDA. All copyright, database rights and other intellectual property rights reside with the NDA. Applications for permission to use the report commercially should be made to the NDA Information Manager.

Although great care has been taken to ensure the accuracy and completeness of the information contained in this publication, the NDA can not assume any responsibility for consequences that may arise from its use by other parties.

© Nuclear Decommissioning Authority 2008. All rights reserved.

Bibliography

If you would like to see other reports available from NDA, a complete listing can be viewed at our website www.nda.gov.uk, or please write to the Library at the address below.

Feedback

Readers are invited to provide feedback to the NDA on the contents, clarity and presentation of this report and on the means of improving the range of NDA reports published. Feedback should be addressed to:

John Dalton,
Head of Communications,
NDA Harwell
Radioactive Waste Management Directorate
Curie Avenue,
Harwell,
Didcot,
Oxon,
OX11 0RH, UK.

john.dalton@nda.gov.uk

WASTE PACKAGE SPECIFICATION AND GUIDANCE DOCUMENTATION

**LIFTING FRAME FOR SIDE LIFTING VARIANT OF 3 CUBIC METRE BOX AND 3
CUBIC METRE DRUM WASTE PACKAGES: DESCRIPTION AND DESIGN
GUIDELINES**

This document forms part of a suite of documents prepared and issued by the Radioactive Waste Management Directorate (RWMD) of the Nuclear Decommissioning Authority (NDA).

The Waste Package Specification and Guidance Documentation (WPSGD) provide specifications and guidance for waste packages, containing Intermediate Level Waste and certain Low Level Wastes, which meet the transport and disposability requirements of geological disposal in the UK. They are based on, and are compatible with, the Generic Waste Package Specification (GWPS).

The WPSGD are intended to provide a 'user-level' interpretation of the GWPS to assist Site License Companies (SLCs) in the early development of plans and strategies for the management of radioactive wastes. To aid in the interpretation of the criteria defined by the WPSGD, and in their application to proposals for the packaging of wastes, SLCs are advised to contact RWMD at an early stage.

The WPSGD will be subject to periodic enhancement and revision. SLCs are therefore advised to contact RWMD to confirm that they are in possession of the latest version of any documentation used.

WPSGD DOCUMENT NUMBER WPS/601 - VERSION HISTORY

VERSION	DATE	COMMENTS
WPS/601/01	February 2006	Aligns with GWPS (Nirex Report N/104) as published June 2005
WPS/601/02	March 2008	Updated to acknowledge NDA assumption of Nirex responsibilities Aligns with Issue 2 of GWPS (Nirex Report N/104) as published March 2007.

This document has been compiled on the basis of information obtained by Nirex and latterly by the NDA. The document was verified in accordance with arrangements established by the NDA that meet the requirements of ISO 9001. The document has been fully verified and approved for publication by the NDA.

1 INTRODUCTION

The Radioactive Waste Management Directorate (RWMD) of the Nuclear Decommissioning Authority (NDA) has been established with the remit to implement the geological disposal option for the UK's higher activity radioactive wastes. The NDA is currently working with Government and stakeholders through the *Managing Radioactive Waste Safely* (MRWS) consultation process to plan the development of a Geological Disposal Facility (GDF).

As the ultimate receiver of wastes, RWMD, acting as GDF implementer and future operator, has established waste packaging standards and defined package specifications to enable the industry to condition radioactive wastes in a form that will be compatible with future transport and disposal. In this respect RWMD is taking forward waste packaging standards and specifications which were originally developed by United Kingdom Nirex Ltd, which ceased trading on 1st April 2007 and whose work has been integrated into the NDA.

The primary document which defines the packaging standards and specifications for Intermediate Level Waste (ILW), and certain Low Level Wastes (LLW) not suitable for disposal in other LLW facilities is the Generic Waste Package Specification (GWPS) [1]. The GWPS is supported by the Waste Package Specification and Guidance Documentation (WPSGD) which comprises a suite of documentation primarily aimed at SLCs, its intention being to present the generic packaging standards and specifications at the user level. The WPSGD also includes explanatory material and guidance that users will find helpful when it comes to application of the specification to practical packaging projects. For further information on the extent and the role of the WPSGD, reference should be made to the *Introduction to the Waste Package Specification and Guidance Documentation*, WPS/100¹.

In order to facilitate the safe and efficient packaging, transport and disposal of ILW/LLW, RWMD has defined a limited range of standard waste containers and has issued specifications that define the dimensions, lifting, handling and other key features of these together with minimum performance requirements for the complete waste package.

This document provides design basis information for a standard lifting frame suitable for handling the side lifting variant of the 3 cubic metre Box² (Figure 1) and the 3 cubic metre Drum (Figure 2) waste packages. It has been issued to accompany, and should therefore be read in conjunction with, the relevant specifications and guidance for those waste packages, namely:

WPS/310: Specification for side lifting variant of 3 cubic metre Box Waste Package

WPS/710: Specification for 3 cubic metre Drum Waste Package

¹ Specific references to individual documents within the WPSGD are made in this document in *italic script*, followed by the relevant WPS number.

² The corner lifting variant of the 3 cubic metre Box waste package has different lifting arrangements and reference should be made to WPS/605 for information regarding the lifting frame for this waste package.

WPS/601/02
March 2008

WPS/710: 3 cubic metre Box Waste Package Specification: Guidance Material and Design Guidelines for side lifting variant

WPS/720: 3 cubic metre Drum Waste Package Specification: Guidance Material and Design Guidelines

In the absence of detailed designs for lifting and handling equipment, the waste packages specifications have been progressed by making reasonable assumptions regarding the design concepts which will be adopted for the lifting equipment. The design basis assumptions may impact on the design of waste containers and are therefore set down in this document so that designers of waste package handling equipment may be aware of them.

2 PURPOSE

The purpose of this document is to supplement the information provided in the specifications for the side lifting variant of the 3 cubic metre Box and the 3 cubic metre Drum waste packages by providing design basis information on the lifting frame which has been assumed in the derivation of those specifications. This document defines the interface between waste packages and the lifting frame and will be of use to designers of waste containers and handling equipment alike.

This document should not be considered as a full specification of the lifting frame since its scope is limited to consideration of those factors which have an impact on the specification of waste package design and performance.

3 GENERAL DESCRIPTION OF THE LIFTING FRAME

3.1 Function of the Lifting Frame

The function of the lifting frame is to ensure that side lifting variants of the 3 cubic metre Box and 3 cubic metre Drum waste packages can be handled in a safe manner by an overhead crane or a similar handling device.

3.2 Design Assumptions

The following are assumptions regarding the design of lifting frame which have been made in the derivation of *WPS/310* and *WPS/320*:

- The lifting frame will be designed to handle the waste packages with a maximum gross mass of 12t³. The lifting frame will be designed to handle the load by means of four point lifting. Four point lifting will be used to provide a degree of redundancy and to minimise tilting due to load imbalance.
- The frame will be designed in accordance with BS 2573 [2] which specifies the classification, stress calculations and design criteria for crane structures. The

³ It should be noted that the maximum permissible gross mass of the 3 cubic metre Drum waste packages is 8t.

group classification, as defined in BS 2573, is assumed to be 'A4', with a class of utilisation 'U3' (infrequent use), which in turn implies a state of loading 'Q3' (heavy loading). A snatch load factor of 1.4 is also assumed.

- The frame will incorporate lifting twistlocks meeting the general requirements of BS 5237 [3], to locate and attach the lifting frame to the load.
- Each twistlock will be of the true horizontal floating type, as defined in BS 5237, to enable them to position themselves separately with respect to the lifting attachments on the load.
- The twistlocks will be housed within a locating spigot of the type defined in BS 5237, designed to locate the twistlock in the apertures of the lifting features on the waste packages.
- Measures will be incorporated in the design of the lifting frame to minimise the risk of inadvertent release or other mishandling of packages. These are likely to include limit and/or probe switches and appropriate warnings to indicate the status of the twistlocks interlocks to detect the presence of a load and prevent unlocking of the twistlocks when laden, and a 'slack rope' interlock to indicate when the lifting frame has been lowered on to the container. In the event of failure of the lifting frame whilst attached to a load measures will be provided to allow the load to be lowered in a controlled manner and disengaged from the lifting frame by remote means. The consequences of a collision with a stationary object whilst laden will be considered in order to minimise the risk of releasing the load.
- The dimensions of the lifting frame will be determined by the need for it to be capable of being introduced, with adequate clearance, into the internal cavity of transport containers when emplacing or removing the load.

4 KEY INTERFACING INFORMATION

4.1 General

The lifting frame interfaces with the load solely via the twistlocks and locating spigots. To ensure proper operation of the lifting frame with the waste package it is essential that the lifting features on the waste package meet the requirements defined in the waste package specifications, *WPS/310* or *WPS/320*. The following information is additionally provided to assist with the design of the lifting feature design.

4.2 Twistlock details

The maximum load to be lifted by the lifting frame is 12t, this being the maximum gross mass of a 3 cubic metre Box waste package. The nominal load to be sustained by each twistlock is therefore 3t. However the SWL must also be chosen to cope with additional factors such as uneven load distribution, tilt, snatch loads, and RWMD's requirement that the twistlocks and frame be capable of supporting the package with only 3 twistlocks attached. All of the above factors will serve to increase the SWL requirements of the individual twistlocks.

WPS/601/02
March 2008

A lifting twistlock of 12t SWL capacity, to the requirements of BS 5237 [3], will be adequate to satisfy these additional considerations.

The SWL of a lifting twistlock designed to BS 5237 [3] is related primarily to the diameter of the shank to head undercut. For a SWL of 12t the undercut diameter has to be not less than 56mm and not more than 57mm, with a nominal shank diameter of 58mm. These details are illustrated in Figure 3. A further consequence is that the lifting frame must allow the twistlocks to float by a minimum of 4mm both laterally and longitudinally.

4.3 Locating Spigot Details

Spigot design requirements are specified in BS 5237 [3]. The spigot dimensions are determined by the major dimensions of the twistlock and are such that they ensure that when the twistlock is in the unlocked position the head of the twistlock does not extend beyond the outer dimensions of the spigot. The major dimensions of the spigots to be employed on the lifting frame are shown in Figure 4 (based on Figure 2 in BS 5237 [3] to which reference may be made for other design details not shown).

4.4 Twistlock Insertion Depth

For the purpose of designing the lifting feature on the waste package the maximum insertion depth of the combination of spigot and twistlock head shall be taken to be 127mm as indicated on Figure 4. The minimum spigot depth will be 66mm and therefore the plate thickness of the lifting aperture on the waste package is to be a maximum of 56mm. This will ensure that when the twistlock is inserted into the lifting feature there will be a minimum 10mm clearance between the twistlock head bearing surface and the underside of the lifting plate.

4.5 Twistlock/Lifting Aperture Positions

The nominal positions of the lifting apertures on the waste packages are defined in *WPS/310* and *WPS/320*, and illustrated in Figure 5 and Figure 6. In addition, these positions will also be used for the positioning of the twistlocks on the lifting frame. Limits on the twistlock positions will be established by RWMD making due allowance for float.

4.6 Aperture Dimensions

Nominal aperture dimensions are defined in *WPS/310* and *WPS/320*, and illustrated in Figure 5 and Figure 6, which also show allowable tolerances on each of the dimensions.

To prevent damage to the twistlock head when entering the aperture a 3mm x 45° lead-in chamfer on the upper surface of the aperture should also be provided.

Figure 1 Side lifting variant of 3 cubic metre Box Waste Package

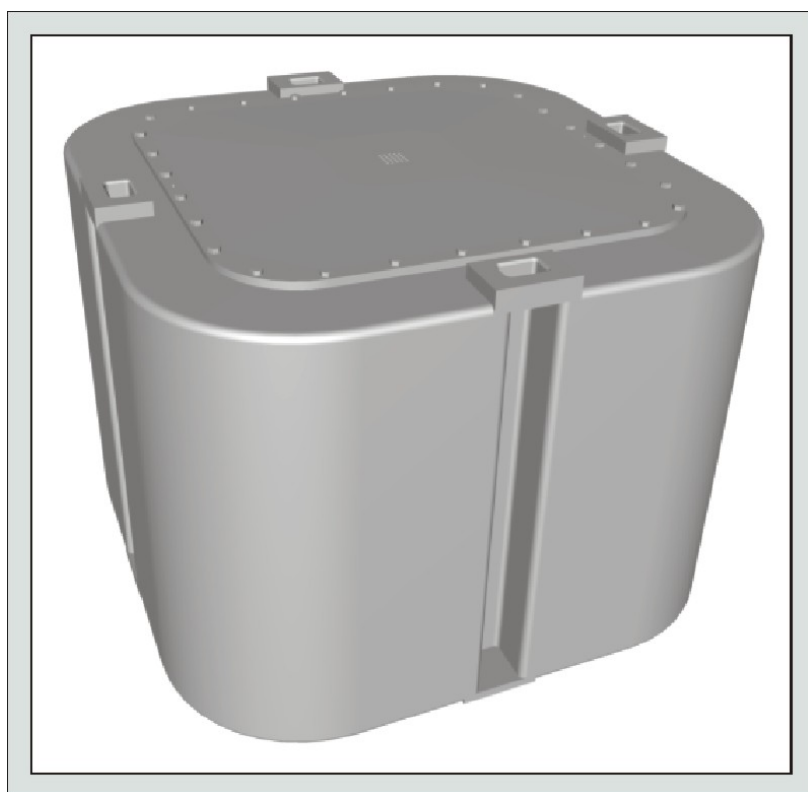


Figure 2 3 cubic metre Drum Waste Package

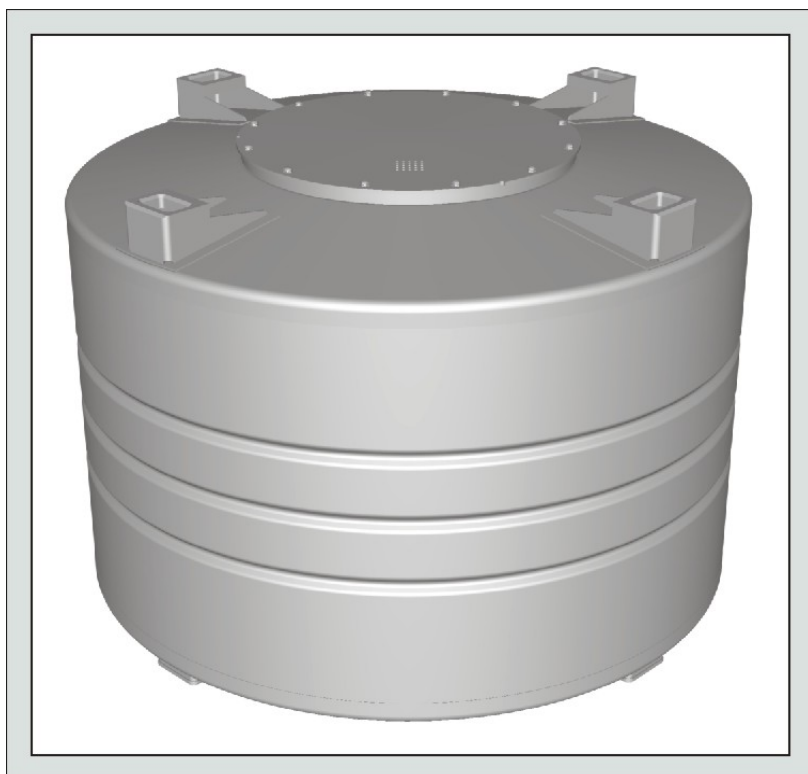
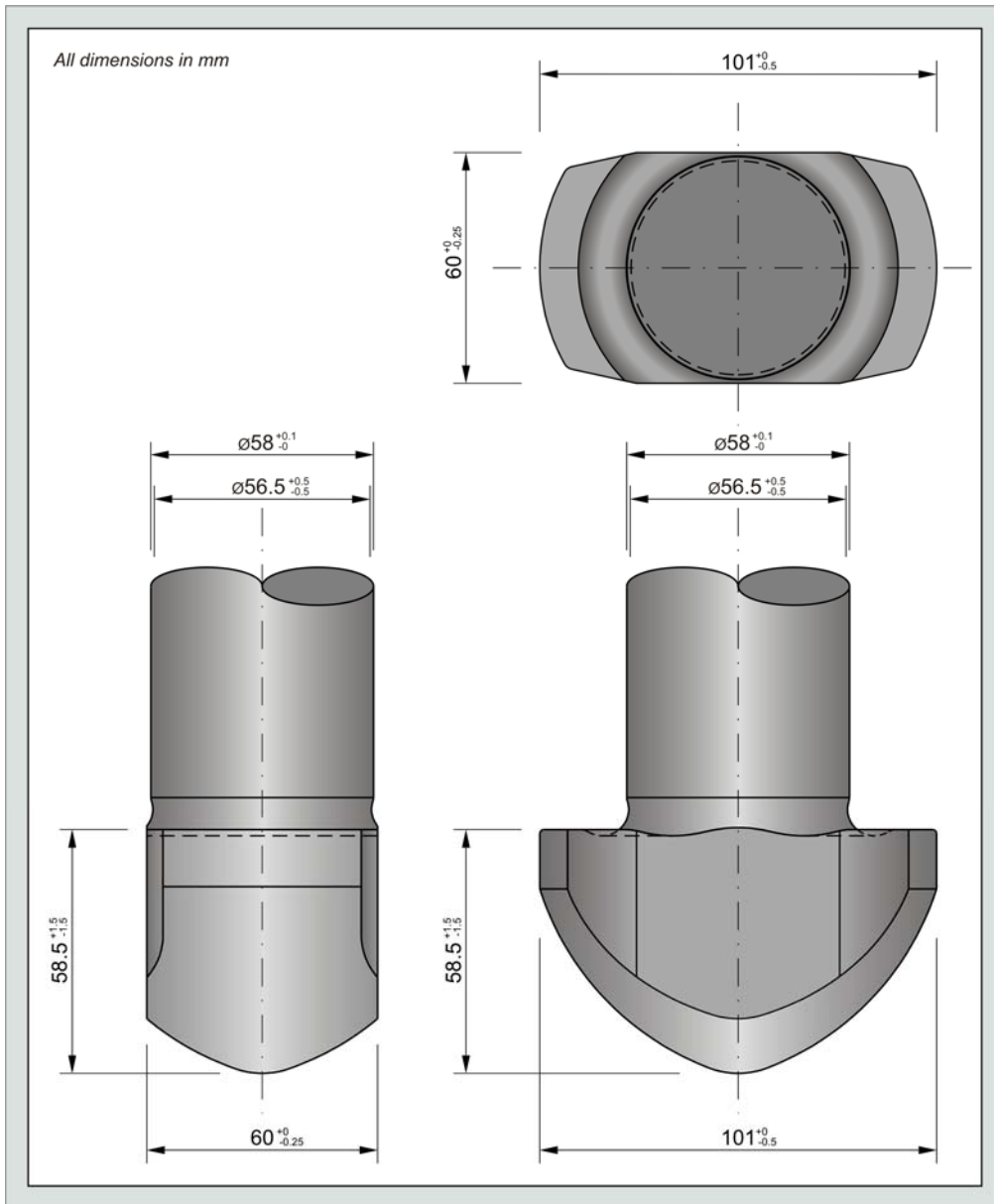
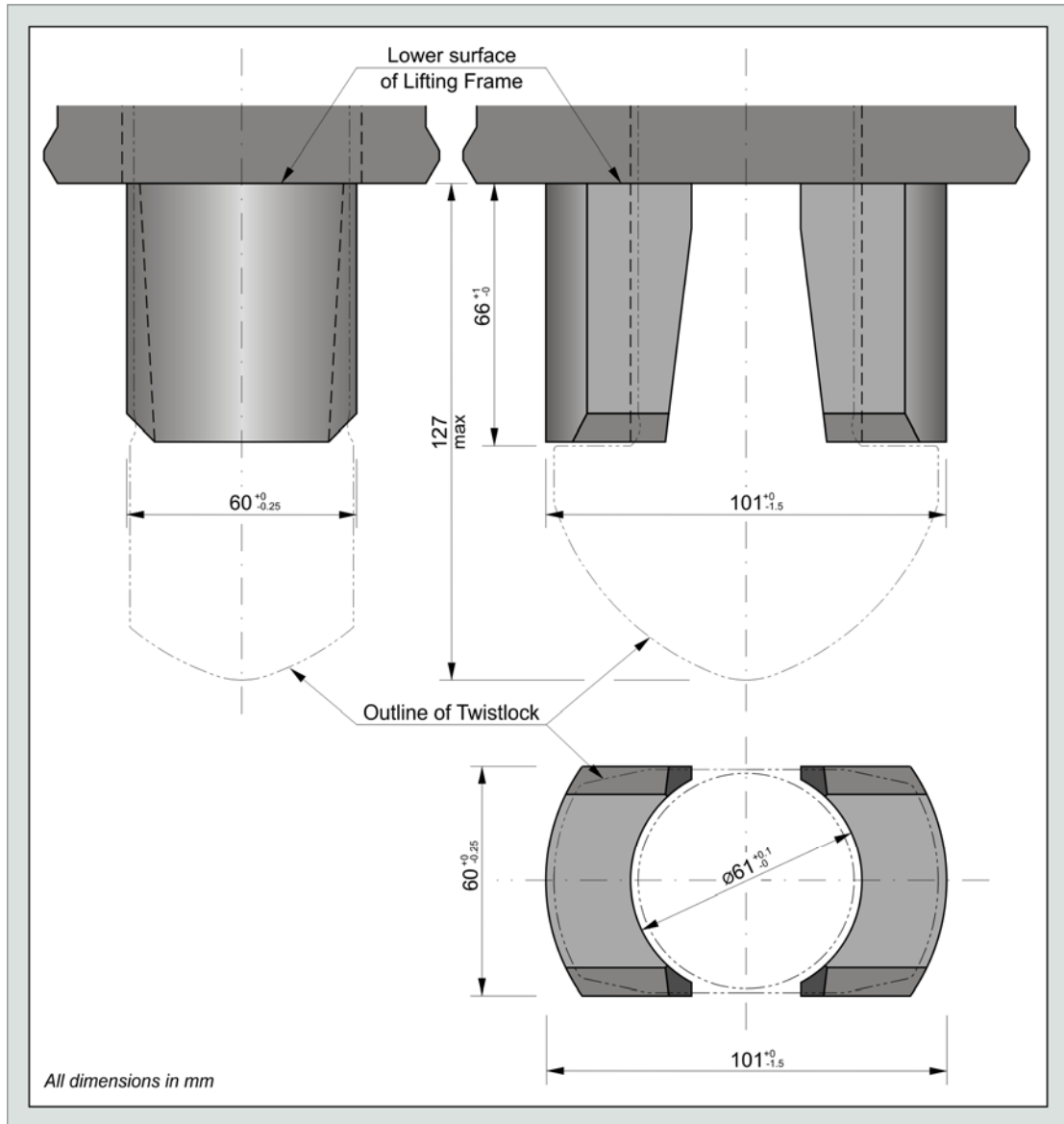


Figure 3 Twistlock Dimensions⁴



⁴ Based on Figure 1 in BS 5237 [3] to which reference may be made for other design details not shown.

Figure 4 Locating Spigot Dimensions⁵



⁵ Based on Figure 2 in BS 5237 [3] to which reference may be made for other design details not shown.

Figure 5 Lifting centres and aperture details for side lifting variant of 3 cubic metre Box waste package

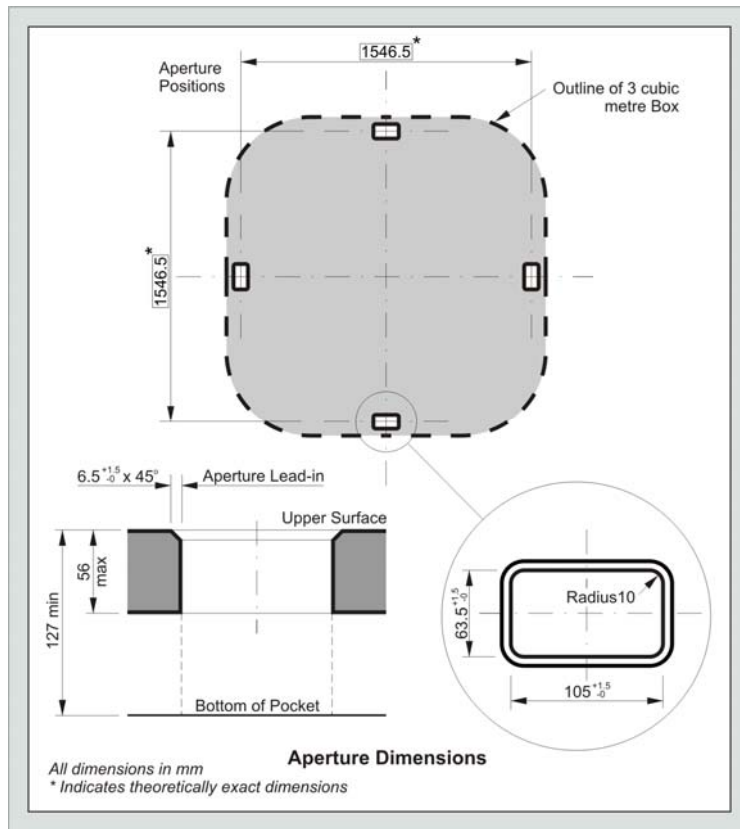
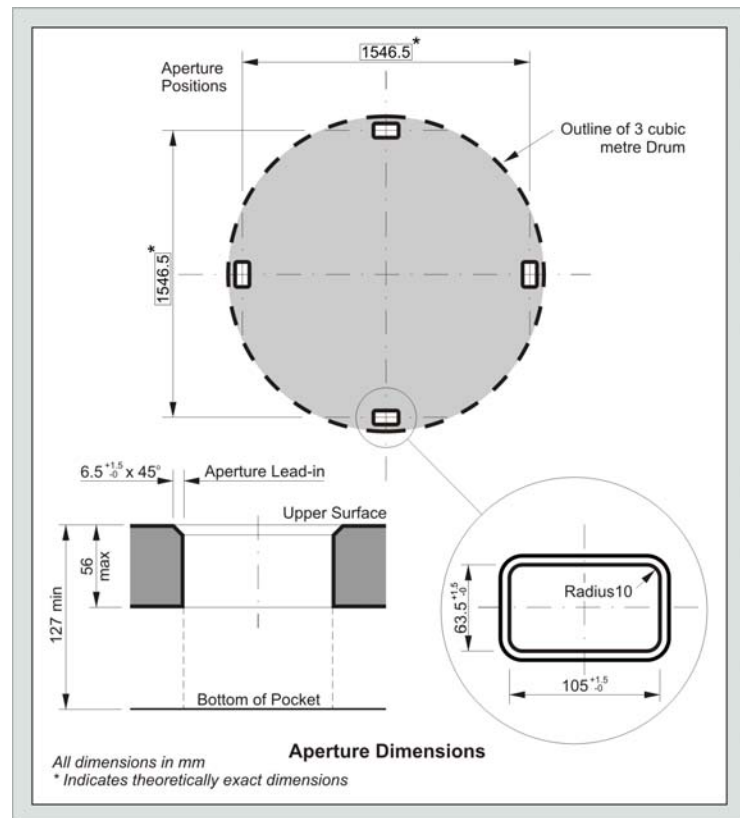


Figure 6 Lifting centres and aperture details for 3 cubic metre Drum waste package



5 REFERENCES

- 1 Nirex, *Generic Waste Package Specification*, Nirex Report N/104 Issue 2, 2007.
- 2 British Standards Institution, *British Standard Rules for Design of Cranes, Part 1 Specification for classification, stress calculations and design for structures*, BS 2573: Part 1, 1983.
- 3 British Standards Institution, *British Standard Specification for Lifting Twistlocks*, BS 5237: 1985.

