



Using the Countryside Stewardship targeting priorities interactive maps

Understand how to use the Countryside Stewardship targeting priorities interactive maps to find out the main environmental priorities for the Countryside Stewardship application area.

See the [statement of priorities](#) page on GOV.UK to find out which National Character Area (NCA) is relevant for the application area.

Accessing the maps

The interactive maps should be saved to your computer before opening:

- Right click on the link to the map and choose 'save target as...'
- Save the file to an appropriate location on your computer

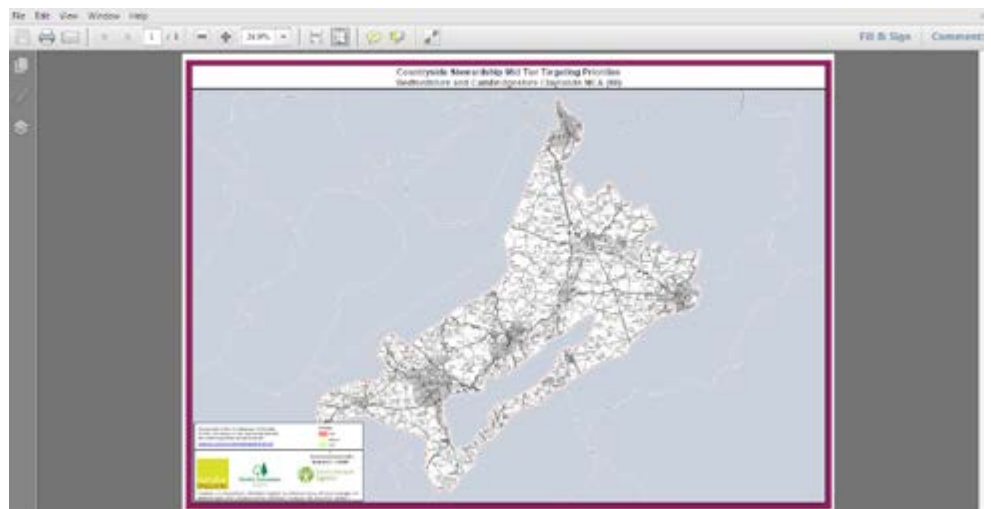
The maps are large files and will take several minutes to download. The maps should not be opened directly from the GOV.UK website. If you have a slow internet connection, try to download the maps at another location, such as the local library, and save on a memory stick for future use.

Using the maps

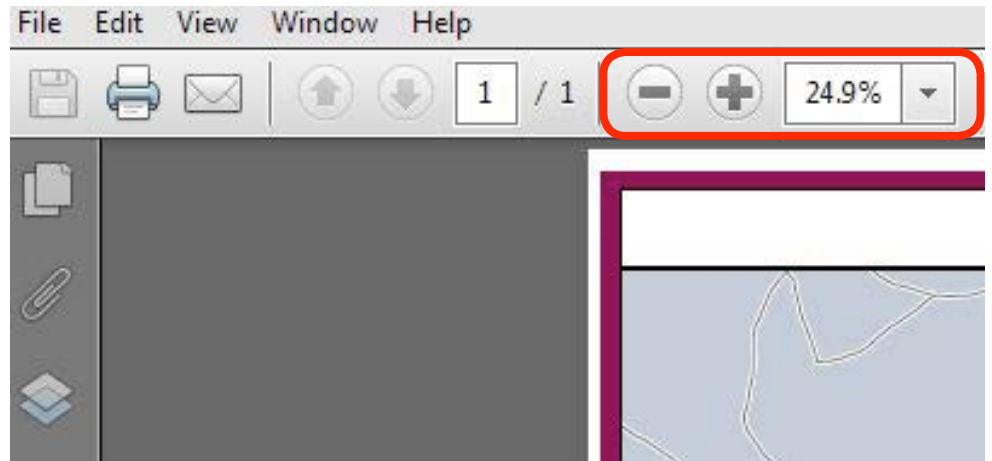
Information about the main environmental priorities for the area can be shown on the maps by turning on individual 'data layers'. Layers shown on the map in:


- red are high priority for this area
- yellow are medium priority for this area
- light green are low priority for this area

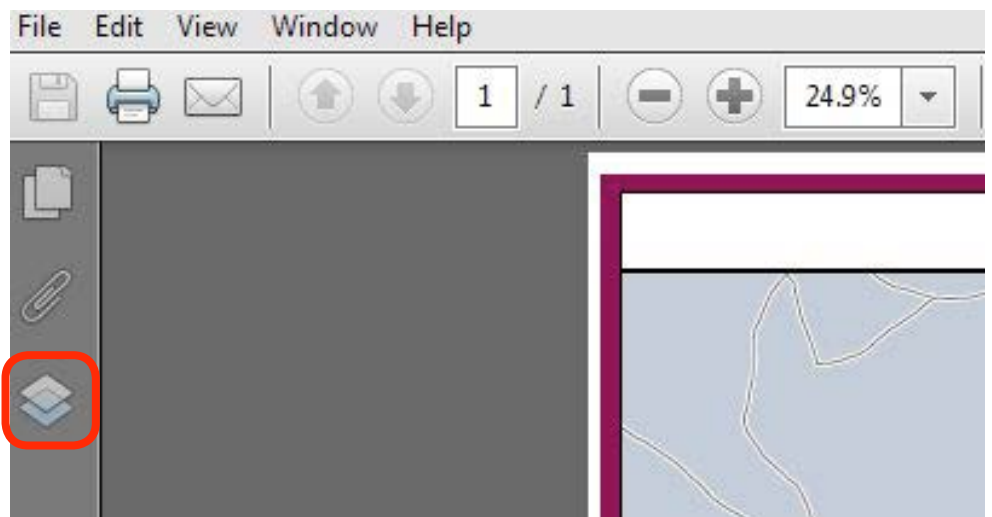
When the map is first opened, it will just show the Ordnance Survey map of the NCA:



Before turning on any layers, zoom in to the area of interest, using the + and - buttons highlighted below:

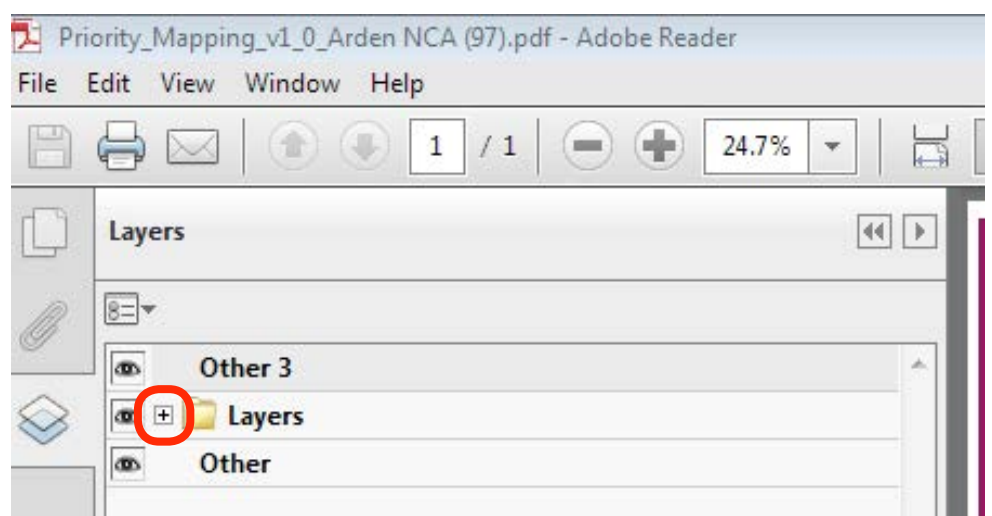



Access the data layers by clicking the icon  on the left hand side of the screen:

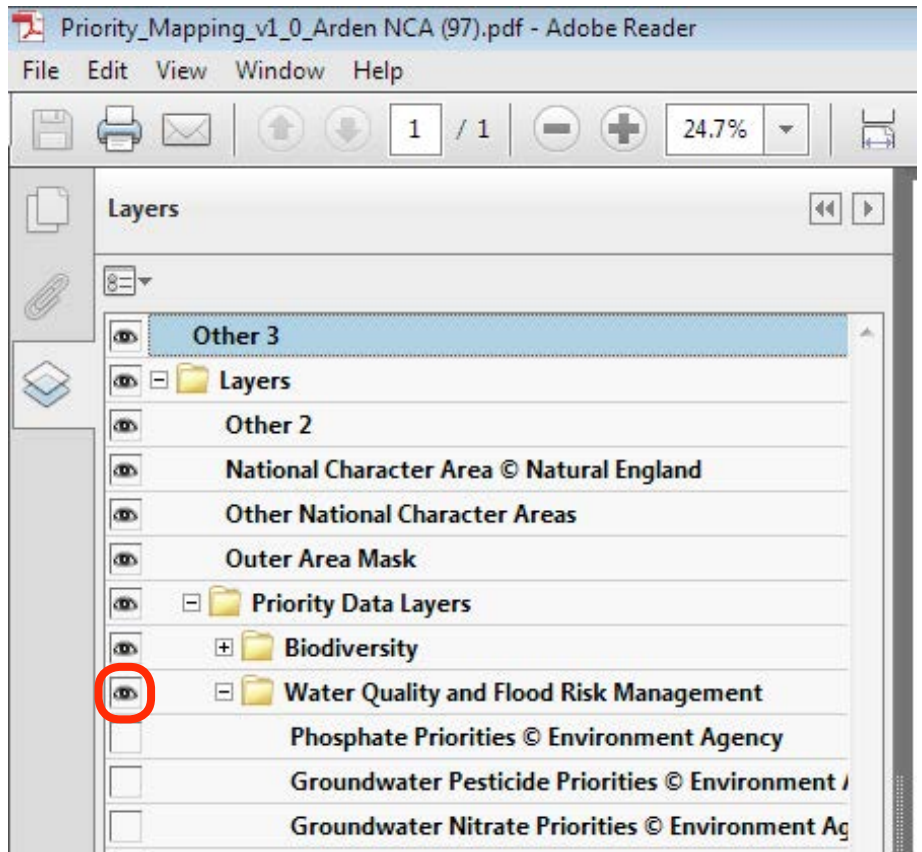


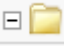
Only display one layer at a time as several of the layers cover large areas and are shown in a solid colour.

To see all of the layers, use the + button next to each folder:



View a layer by clicking on the relevant open box . Layers that have been selected are shown with an eye symbol next to them:



If a box in a row with a folder icon  is selected, all layers within that folder will be shown on the map.

What happens if my farm cuts across two National Character Areas?

Where the land you are interested in extends into two or more NCAs, you can see the mapped information for these areas by turning off the data layer titled "Outer Area mask"

What happens if the Legend box blocks my view of the map?

Where the land you are interested in is covered by the Legend box, you can switch off the "Legend" data layer which will switch off the box leaving the mapped data shown clearly.

A full list of the data shown can be found below in annex 1.

The data used to produce the interactive maps was also used to create the statement of priorities documents. These documents should be viewed alongside the maps.

Annex 1 Data layer information

Biodiversity designations	Notes
Natura 2000 sites	
Sites of Special Scientific Interest (SSSI)	
Special Areas for Conservation (SAC)	
Special Protection Areas (SPA)	
Habitats	
Priority river habitat	Priority for maintenance
Restoration river habitat	Priority for restoration
Ancient Woodland	
Priority Woodland Habitat	
Priority Habitat Inventory	
Priority Ponds	
Wood Pasture and Parkland	
Refined Coastal and Floodplain Grazing Marsh	
Species	
Important Arable Plant Areas	© Plantlife
Farm Wildlife Package hotspots	These are high priority tetrads (2x2km square) for the Wild Pollinator and Farm Wildlife Package
<ul style="list-style-type: none"> ■ Farmland Bird Priority Tetrads (where three or more of six widespread but declining farmland birds occur together) ■ Wild Pollinator Priority Tetrads (where seven or more of 13 species of wild bee associated with the wider countryside occur together) 	© BTO © BWARS/CEH
Farm Wildlife Package NCAs	High priority NCAs for the Wild Pollinator and Farm Wildlife Package.
Breeding Waders assemblage	© BTO
Woodland Bird assemblage	© BTO
Water quality and flood risk management	All © Environment Agency
Phosphate priorities	
Groundwater Pesticide priorities	
Groundwater Nitrate priorities	
River Pesticide priorities	
River Nitrate priorities	
Sediment priorities	
All water quality priorities combined	Combination of all of the water quality layers in this section
Flood Risk Management Priorities	
Forestry	All © Forestry Commission
Keeping Rivers Cool / Woods for Water priority areas	
Unmanaged Woodland	
Woodland Close to People	
Woodland Creation for Biodiversity	
Woodland Creation for Flood Risk Management	
Woodland Creation for Water Quality	

Historic Environment	
Selected Heritage Inventory for Natural England (SHINE) – High Priority	
Selected Heritage Inventory for Natural England (SHINE) – Medium Priority	
Archaeology Scheduled Monuments	© Historic England
Building/Structure Scheduled Monuments	© Historic England
Registered Battlefields	© Historic England
Registered Parks and Gardens	© Historic England
Landscape	
Areas of Outstanding Natural Beauty (AONB)	
Nature Improvement Areas (NIA)	
Near Miss Nature Improvement Areas	
Historic Parkland	
Traditional Orchards	
Environmentally Sensitive Areas (ESA)	
World Heritage Sites (WHS)	
NCA level landscape features	These 11 data layers indicate the NCA-wide priority landscape features for Mid Tier as referenced in the Statement of Priorities
Climate Change	This group of datasets relates to habitat-based action to address climate change adaptation and mitigation
Carbon Sequestration Priority	
Carbon Storage Priority	
Climate Change Sensitivity	
Climate Change Vulnerability Buffers	
Outcome 1D restoration target	Restoration of degraded habitats
Refugia	
Air quality	
Sites Sensitive to Ammonia Pollution	Buffers around sites sensitive to ammonia
Other data	
Indicative Parcel Boundaries	Indicative Rural Land Register parcels © Rural Payments Agency
Base Data	A number of datasets to provide general context, not directly linked to targeting and scoring
National Character Area (NCA)	Boundary of the named NCA covered by this map
Other National Character Areas	Boundaries for neighbouring NCAs
Outer Area Mask	When visible, this hides neighbouring NCAs. Useful to turn this layer off where the land in question falls into two or more NCAs.