



## Statistical First Release

### NEET Quarterly Brief – April to June 2015

---

Reference	SFR 29/2015
Date	20 August 2015
Coverage	England
Theme	Children, Education and Skills
Issued by	Department for Education, Sanctuary Buildings, Great Smith Street, London SW1P 3BT
Press office	020 7783 8300
Public enquiries	0370 000 2288
Statistician	Dexter Roberts
Email	<a href="mailto:Post16.STATISTICS@education.gsi.gov.uk">Post16.STATISTICS@education.gsi.gov.uk</a>
Internet	<a href="http://DfE-NEET-Statistics">DfE-NEET-Statistics</a>

---

The proportion of young people NEET fell across all summary age groups and was the lowest on record for 16-18 year olds.

The **16-18** NEET rate fell by 0.6 percentage points to 7.5% in April to June 2015 compared to the same period last year and is the lowest April to June figure since comparable data began in 2000.

The **19-24** NEET fell 0.3 percentage points (to 15.7%) over the same period and the overall **16-24** rate fell by 0.4 percentage points (to 13.1%).

---

The proportion of those not in education or training (NET) fell slightly for the 16-18 and 16-24 summary age groups.

The proportion of **16-18** year olds NET fell by 0.4 percentage points in the last year (to 15.7%) and was 13.1 percentage points lower than the highest point in 2003.

The **19-24** NET remained roughly the same at 60.1%. The overall **16-24** NET fell by 0.1 percentage points (to 46.2%) which is 3.7 percentage point lower than the highest point in 2006.

---

Note: \* - Change is statistically significant.

#### **A National Statistics publication**

National Statistics are produced to high professional standards set out in the National Statistics Code of Practice. They undergo regular quality assurance reviews to ensure that they meet customer needs. They are produced free from any political interference.

## 1. Background and context

This note sets out the available statistics on young people not in education, employment or training (NEET) and young people not in education or training (NET) from three data sources. The data from all three sources cover England, and are based on academic age.

Estimates of 16-24 year olds NEET in the UK, based on calendar age, are published by ONS on the same day as this release. The long term trends in the ONS data are similar to those shown in this release, although the different coverage and ages used can lead to some discrepancies when comparing change between specific points in time. Further details and a link to the ONS publication are available in section 2.f.

---

<b>Participation Statistical First Release (SFR)</b>	These are the authoritative national estimates of NEET and NET rates. They are published annually in the 'Participation in Education, Training and Employment by 16-18 Year Olds in England' SFR. These data are only available annually and cannot be disaggregated to sub-national levels.
<b>Quarterly Labour Force Survey (LFS)<sup>1</sup></b>	Analysis of the LFS allows in-year estimates to be made of NEET and NET trends as well as estimates for other age groups, including 16-24, 18-24 and 19-24. The quarterly LFS estimates cannot be directly compared with the headline Participation SFR series which is based on more detailed but less timely data. The most recent LFS based estimates for NEET, for the period April to June 2015, are shown in the table below along with 2013 and 2014 data.
<b>Local Authorities' Client Caseload Information System (CCIS)</b>	CCIS is the database that local authorities use to record the activity of young people aged 16-19 resident in their area. Data can be aggregated to provide estimates for local authorities and regions within England.

---

---

<sup>1</sup> The methodology used to produce these data was revised in May 2013 to ensure harmonisation with the new ONS UK NEET estimates. Further information about this change and the impact on previously released data can be found in the [Harmonised NEET Methodology paper](#).

## Headline Results Table

**Table: NEET rates for different age cohorts: England 2013 – 2015**

	April to June 2013	April to June 2014	April to June 2015	% point change from April to June 2014 to April to June 2015
Age 16	5.0%	3.8%	2.3%	-1.6ppts*
Age 17	8.1%	7.4%	7.6%	0.2ppts
Age 18	14.4%	13.0%	12.6%	-0.4ppts
Age 16-18	9.2%	8.1%	7.5%	-0.6ppts
Age 19-24	18.2%	16.0%	15.7%	-0.3ppts
Age 16-24	15.4%	13.5%	13.1%	-0.4ppts

Source: Labour Force Survey, April to June

Note: \*Change is statistically significant

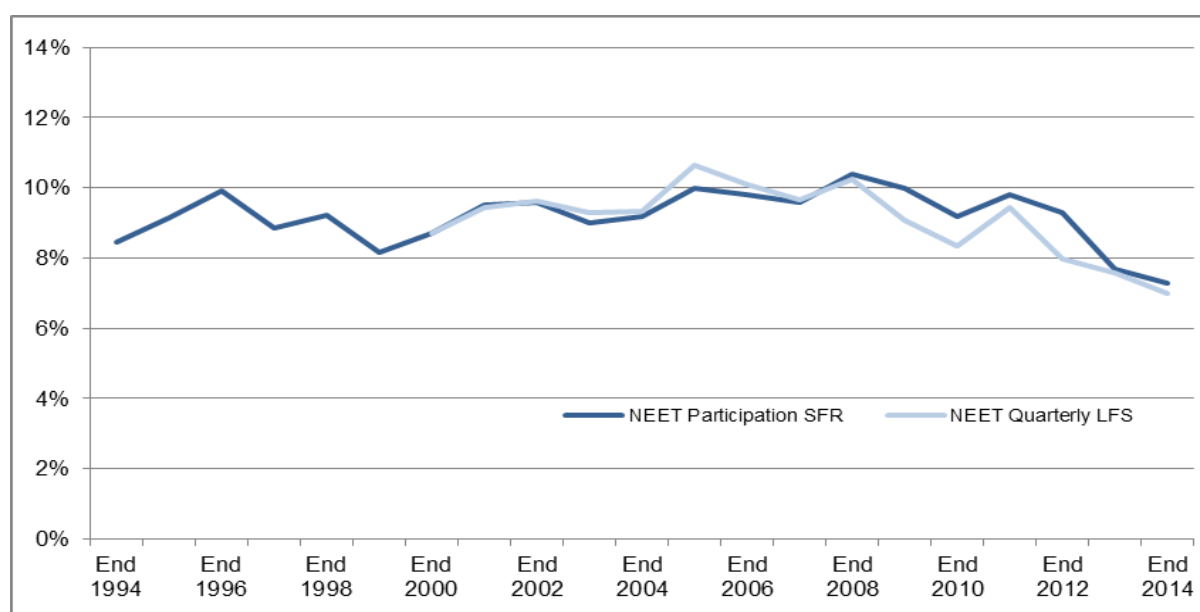
## 2. Trends

### Historical Context

Understanding the historical trends in NEET rates is an important part of placing current performance in perspective. The chart below shows the NEET Participation SFR measure from 1994 along with the LFS NEET measure back to 2000 (the furthest back that the methodology for each measure can be applied consistently).

The 16-18 NEET rate has tended to fluctuate at around 8-10%, although since 2008 both measures have shown a downward trend.

**Chart 1: NEET historical series for 16-18 year olds: England, end 1994 - end 2014**



Source: Statistical First Release (SFR) 'Participation in Education, Training and Employment by 16-18 Year Olds in England' and analysis of Labour Force Survey (LFS), Oct-Dec Quarter.

### a. NEET Participation SFR series (last updated August 2015)

The Department's Statistical First Release (SFR) ['Participation in Education, Training and Employment by 16-18 Year Olds in England'](#), published in June 2015, is the primary source of national data on 16-18 year olds NEET. This showed that:

---

Participation in education or training had increased and offset...	Between end 2013 and end 2014 the proportion of 16-18 year olds participating in education and training increased from 85.4% to 86.4%.
... a slight fall in the employment rate of the NET group ...	Over the same period, the employment rate of the 16-18 year olds not in education or training fell slightly from 47.1% to 46.3%.
...resulting in a small fall in the proportion of young people NEET.	The result of these two factors is that the proportion of 16-18 year olds NEET at the end of 2014 decreased by 0.4 percentage points to 7.3%.

---

### b. NEET quarterly LFS series (last updated August 2015)

We can monitor trends in NEET rates between the publications of the Participation SFR series using quarterly LFS data.

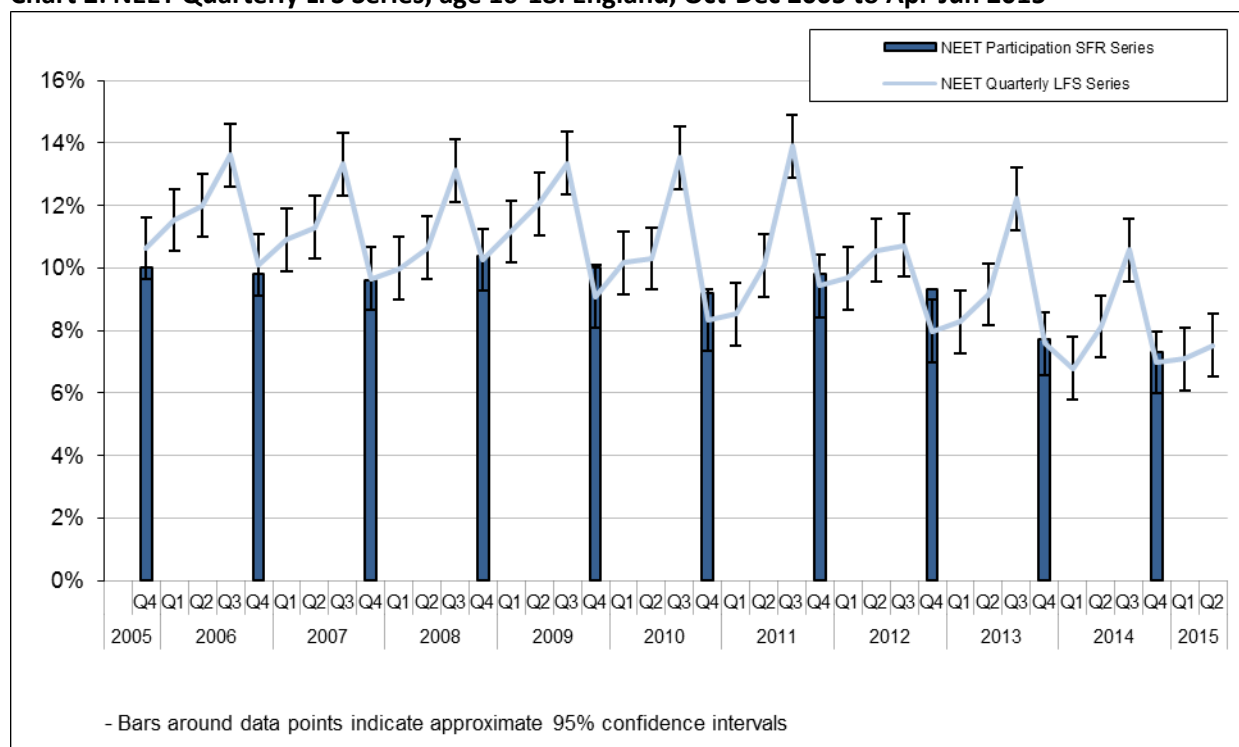
The trend data for 16-18 year olds shows seasonal patterns that reflect the academic year: lower rates in autumn (October to December) followed by a gradual rise in spring and early summer (January to June) with a peak in late summer (July to September).

---

The proportion of 16-18 year olds NEET has decreased.	<p>7.5% of 16-18 year olds were NEET in April to June 2015. The fall of 0.6 percentage points compared to the same period last year is not statistically significant. This is the lowest comparable figure since consistent data began in 2000 and is 4.5 percentage points lower than the high point of 12.0% in 2009.</p> <p>The proportion of 16 year olds who were NEET in April to June 2015 fell by 1.6 percentage points (to 2.3%) compared to 2014. The change is statistically significant. The proportion of 18 year olds NEET fell by 0.4 percentage points to 12.6% over the same period. These falls more than offset a small rise in the 17 year old NEET rate, which rose by 0.2 percentage points to 7.6%.</p>
This fall has been caused by an increase in both participation and the employment rate for those not in education or training.	<p>The proportion of 16-18 year olds NET decreased by 0.4 percentage points in the last year to 15.7% (see section e for more details).</p> <p>The employment rate of the NET group rose by 2.7 percentage points in the last year to 52.0%. This is the highest comparable rate since April to June 2008.</p>

---

**Chart 2: NEET Quarterly LFS Series, age 16-18: England, Oct-Dec 2005 to Apr-Jun 2015**



Source: Quarterly Labour Force Survey and Participation SFR.

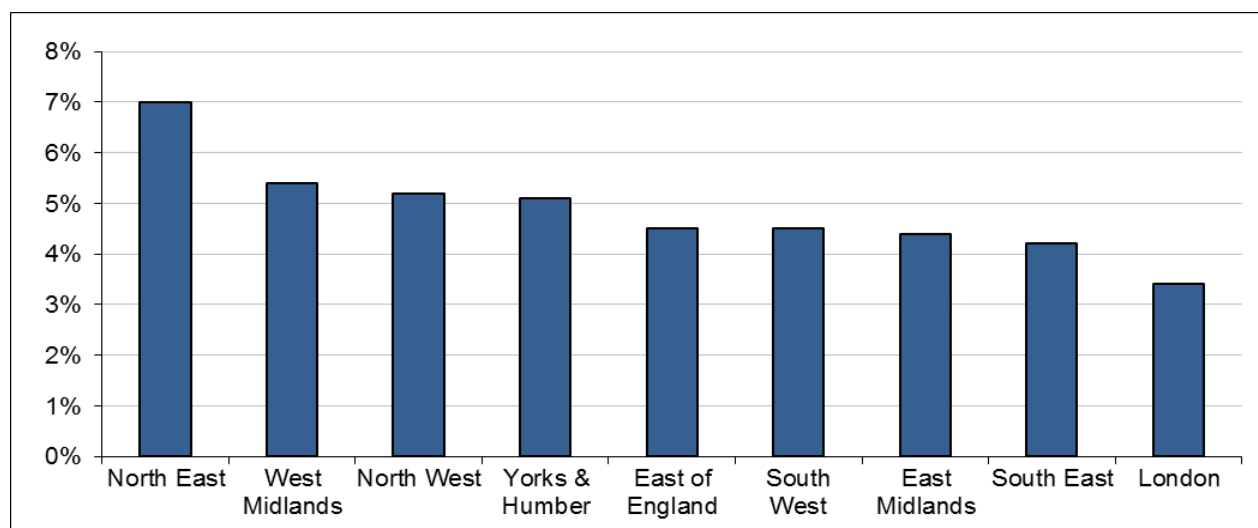
Note: Q1 relates to the months January to March, Q2 relates to April to June, Q3 relates to July to September and Q4 relates to October to December.

**c. Regional NEET (last updated May 2015)**

The regional picture on 16-18 NEET is taken from [Local Authorities' Client Caseload Information System \(CCIS\)](#), published in March 2015.

CCIS data indicates that the northern English regions have higher NEET rates, i.e. North East, West Midlands, North West, and Yorks & the Humber. In comparison, London and South East have the lowest NEET rates.

**Chart 3: Regional NEET, age 16-18: England, Nov 2014-Jan 2015 average**



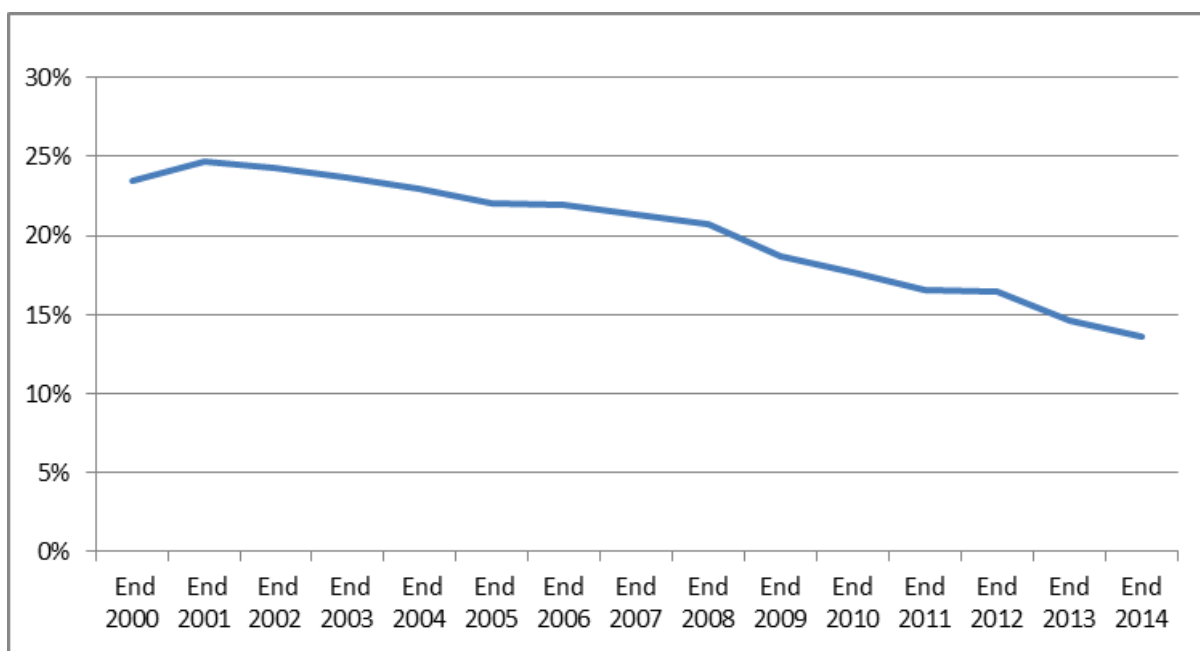
Source: Client Caseload Information System

Note that Local Authority CCIS data are published annually and tend to show a lower percentage NEET than either the Participation SFR or LFS data sources. In addition, regional NEET estimates for 16-24, 18-24 and 19-24 year olds summary age groups based on the LFS are published as supplementary tables alongside this Quarterly Brief.

#### **d. NET Participation SFR series (last updated August 2015)**

When examining NEET data, it is also important to contextualise it with data on the proportion of young people not in education or training (NET). These data are also taken from the SFR 'Participation in Education, Training and Employment by 16-18 Year Olds in England'.

**Chart 4: NET Participation SFR series, age 16-18: England, end 2000 – end 2014**



Source: Statistical First Release (SFR) 'Participation in Education, Training and Employment by 16-18 Year Olds in England'

The latest Participation SFR NET rate, for end 2014, was 13.6%, a fall of 1.1 percentage points from end 2013. This is the lowest comparable figure since consistent data began in 1994.

**e. NET quarterly LFS series (last updated August 2015)**

As with the NEET data, we can look at the in-year NET trend data using the quarterly LFS. The NET series shows the same seasonal pattern as the NEET series. The latest data shows that:

---

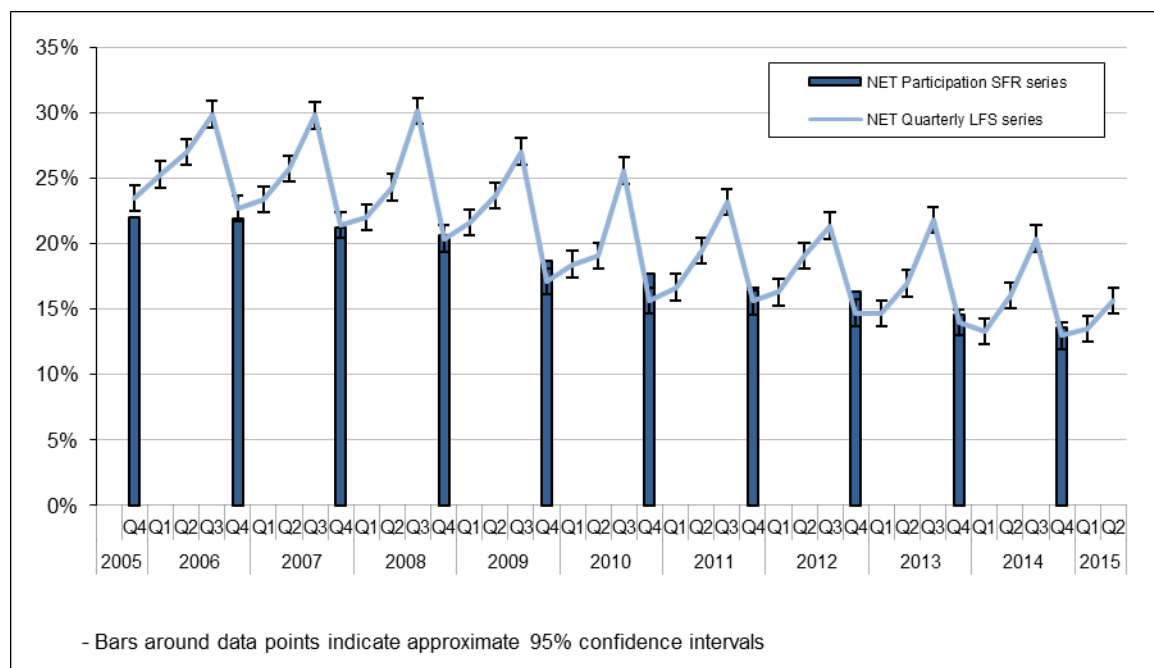
The proportion of 16-18 year olds NET has decreased...	15.7 % of 16-18 year olds were NET in April to June 2015. This is a fall of 0.4 percentage points compared to the same period last year. The change is not statistically significant. This is 13.1 percentage points lower than the peak of 28.8% in 2003.
--	--

---

...with falls at 16 and 18 offsetting a rise at 17	The proportion of 16 year olds who were NET in April to June 2015 fell by 1.8 percentage points (to 2.9%) compared to 2014. The change is statistically significant. The proportion of 18 year olds NET fell by 0.4 percentage points to 30.2% over the same period. These falls more than offset a rise in the 17 year old NET rate which rose by 1.2 percentage points to 13.7%.
--	--

---

**Chart 5: NET Quarterly LFS series, age 16-18: England, Oct-Dec 2005 to Apr-Jun 2015**



Source: Quarterly Labour Force Survey and Participation SFR.

Note: Q1 relates to the months January to March, Q2 relates to April to June, Q3 relates to July to September and Q4 relates to October to December.

### 3. Methodology and Notes

#### a. NEET and NET Participation SFR series

Description	These data give the definitive measures for 16-18 NEET and NET rates in England.
Uses	These series should be used as the national time series for 16-18 year olds NEET and NET in England. The NET series should be used as context for any NEET data.
Geographical Coverage	England
Age coverage	Academic age 16 to 18
Published source	Statistical First Release (SFR) 'Participation in Education, Training and Employment by 16-18 Year Olds in England'
Primary sources	The Schools' Census Pupil Level Annual Schools' Census The Individualised Learner Record (ILR) Higher Education Statistics Agency (HESA) Higher Education Students Early Statistics (HESES) Labour Force Survey Mid-year estimates and projections of population from the Office for National Statistics (ONS)
Last period covered	End 2014
Last published	June 2015
Next published	June 2016

#### b. NEET and NET quarterly LFS series

Description	These series are quarterly estimates of NEET and NET amongst young people from the LFS. They are not directly comparable with the Participation SFR measure. However, these statistics are produced using the same methodology as the ONS UK NEET estimate. Full details are published in the <a href="#">technical specification</a> .
Uses	These series provide more timely data on the recent trends in NEET and NET since the last Participation SFR. Trends should be assessed by comparing the current time period with the same time period in the previous year, to account for seasonal effects. For example, October-December figures should not be compared with January-March figures. The NET series should be used as context for any NEET data.
Geographical coverage	England
Age coverage	Academic age 16 to 24
Published source	Quarterly Labour Force Survey
Primary sources	Quarterly Labour Force Survey
Last Period Covered	April-June 2015
Last published	August 2015
Next published	November 2015



### c. Regional NEET

Description	<p>This series is a 3 month average snapshot estimate of the regional NEET rate taken from the Local Authority Client Caseload Information System (CCIS) data. It is neither directly comparable with the LFS nor the Participation SFR series due to the use of 'currency' rules. The activity status of young people in education or employment is not actively checked every month, but has a shelf life depending on the type of educational course or the nature of the employment.</p> <p>For young people whose currency is lapsed a historical assumption is made on the proportion NEET, taking into account their previously reported activity.</p> <p>The combination of both factors leads to estimates of NEET in the CCIS data that tend to be lower than those estimated from the LFS or those reported in the annual participation statistical first release.</p>
Uses	This series shows the data, aggregated in regions, used by Local Authorities to inform local activity and target setting.
Geographical Coverage	England
Age coverage	Academic age 16 to 18
Published source	Management information published on the DfE website as policy data: <a href="#">16- to 18-year-olds NEET</a>
Primary sources	Client Caseload Information System (CCIS)
Last Period Covered	November 2014 – January 2015 average
Last published	March 2015
Next published	June 2016

### d. Scheduled revisions to previously published statistics

Labour Force Survey (LFS) datasets are routinely reweighted in line with population estimates. The most recent update introduced a new weighting variable, PWT14, to LFS datasets from July - September 2011 onwards. More information about the impact of the reweighting on the NEET and NET rates is available in an additional spreadsheets published with the [July to September 2014 quarterly brief](#).

The PWT14 weights reflects the most recent population estimates for England and Wales, announced by the Office for National Statistics (ONS) on 16<sup>th</sup> July 2012.

ONS have produced a comparison of the 2011 Census and the LFS labour market indicators which can be found at the following link: <http://www.ons.gov.uk/ons/rel/census/2011-census/key-statistics-for-local-authorities-in-england-and-wales/rpt-labour.html>

#### **e. National Statistics Publication**

The United Kingdom Statistics Authority has designated these statistics as National Statistics, in accordance with the Statistics and Registration Service Act 2007 and signifying compliance with the Code of Practice for Official Statistics.

Designation can be broadly interpreted to mean that the statistics:

- meet identified user needs;
- are well explained and readily accessible;
- are produced according to sound methods, and
- are managed impartially and objectively in the public interest.

Once statistics have been designated as National Statistics it is a statutory requirement that the Code of Practice shall continue to be observed.

**f. Equivalent statistics from the Welsh Assembly Government, Scottish Government and the Office for National Statistics (ONS)**

	<b>Welsh Assembly Government (WG)</b>	<b>Scottish Government (SG)</b>	<b>Office for National Statistics (ONS)</b>
Description	1. Annual SFR statistics produced in a method analogous to the DfE annual SFR.	1. Statistics based on the Annual Population Survey (APS).	1. Monthly Labour Force Survey (LFS) statistics for young people not in full-time education and not in employment -Table 14 from the Labour Market Statistics bulletin.
	2. Quarterly Statistics based on the Annual Population Survey (APS). Definition of NEET corresponds to that used in the DfE NEET Quarterly Brief	2. Annual school leaver statistics	2. Quarterly Statistics based on the Labour Force Survey (LFS). Definition of NEET corresponds to that used in the DfE NEET Quarterly Brief.
	3. Pupil destinations based on Careers Wales Survey.	3. Combination of DWP benefits data and school leaver destinations	
Uses	1. Regarded as the definitive measure of headline NEET estimates in Wales.	1. National estimates of NEET.	1. Part of wider labour market statistics; rolling 3-month average both seasonally-adjusted and not seasonally-adjusted; roughly equivalent to NEET but will include some young people in part-time education.
	2. Timely data; regional or single-age estimates based on averaging 3 years of data.	2. Proportion of young people in 'positive destinations'. The complement is roughly equivalent to NEET, but will include some young people in part-time education.	2. UK estimate, seasonally adjusted.
	3. Local area estimates of NEET.	3. Local area estimates of NEET.	
Geographical Coverage	Wales	Scotland	United Kingdom (UK)
Age coverage	Academic age 16-18, 19-24 (SFR); academic age 16-18, 19-24 (APS); interviews in October following Year 11 (Careers Wales)	Actual age 16-19.	Actual age 16-17 and 18-24.
Published source	<a href="#">1. Welsh Government   Participation of Young People in Education and the Labour Market, 2013 and 2014 (provisional)</a>	<a href="#">1. Local Area Labour Markets in Scotland: Statistics from the Annual Population Survey 2014</a>	<a href="#">1. UK Labour Market - August 2015</a>
	<a href="#">2. Young People Not in Education, Employment or Training (NEET), Year to 31 March 2015</a>	<a href="#">2. Summary statistics for attainment, leaver destinations and healthy living, No. 5: 2015 Edition</a>	<a href="#">2. ONS UK NEET, August 2015</a>
	<a href="#">3. Pupil Destinations from Schools in Wales, 2014</a>	<a href="#">3. More Choices More Chances</a>	

## 4. Tables

**Table 1: Number Not in Education, Employment or Training (NEET): England**

a. NEET Participation SFR series	16 year olds	17 year olds	18 year olds	16-17 year olds	16-18 year olds	16-24 year olds	18-24 year olds	19-24 year olds
End 2000	40,700	44,200	71,300	84,800	156,100			
End 2001	46,700	55,500	73,600	102,100	175,800			
End 2002	47,400	57,300	75,700	104,700	180,300			
End 2003	44,600	47,300	79,800	91,900	171,700			
End 2004	45,500	53,500	78,800	99,000	177,800			
End 2005	48,100	63,000	85,600	111,100	196,600			
End 2006	44,800	58,400	90,600	103,200	193,800			
End 2007	41,200	59,200	91,800	100,400	192,300			
End 2008	38,900	62,600	110,900	101,500	212,400			
End 2009	36,000	52,700	114,900	88,600	203,500			
End 2010	33,800	54,400	96,000	88,200	184,300			
End 2011	35,200	56,100	102,400	91,300	193,700			
End 2012	37,900	46,800	98,000	84,700	182,700			
End 2013	26,200	40,900	84,400	67,000	151,400			
End 2014	20,700	35,300	85,800	56,000	141,800			

Source: Labour Force Survey and Admin Data. Period: End 2000 to End 2014

b. NEET Quarterly LFS series*	16 year olds	17 year olds	18 year olds	16-17 year olds	16-18 year olds	16-24 year olds	18-24 year olds	19-24 year olds
Q2 2010	32,000	69,000	102,000	100,000	202,000	864,000	763,000	662,000
Q3 2010	39,000	102,000	124,000	140,000	264,000	1,020,000	880,000	756,000
Q4 2010	28,000	41,000	92,000	70,000	161,000	933,000	863,000	772,000
Q1 2011	35,000	50,000	82,000	85,000	167,000	923,000	838,000	756,000
Q2 2011	43,000	57,000	96,000	100,000	196,000	989,000	889,000	793,000
Q3 2011	50,000	100,000	123,000	151,000	274,000	1,179,000	1,028,000	905,000
Q4 2011	32,000	52,000	96,000	84,000	180,000	967,000	883,000	787,000
Q1 2012	39,000	58,000	89,000	98,000	186,000	955,000	858,000	769,000
Q2 2012	37,000	61,000	104,000	98,000	202,000	981,000	883,000	779,000
Q3 2012	26,000	82,000	95,000	108,000	203,000	1,038,000	930,000	835,000
Q4 2012	22,000	33,000	97,000	55,000	152,000	894,000	839,000	742,000
Q1 2013	27,000	42,000	90,000	68,000	158,000	909,000	840,000	750,000
Q2 2013	30,000	56,000	89,000	86,000	175,000	933,000	847,000	759,000
Q3 2013	32,000	93,000	105,000	125,000	231,000	1,068,000	943,000	837,000
Q4 2013	21,000	30,000	93,000	51,000	144,000	849,000	799,000	705,000
Q1 2014	20,000	28,000	80,000	48,000	128,000	778,000	730,000	651,000
Q2 2014	24,000	46,000	83,000	70,000	153,000	811,000	741,000	659,000
Q3 2014	30,000	72,000	99,000	102,000	202,000	932,000	830,000	731,000
Q4 2014	15,000	34,000	84,000	49,000	133,000	787,000	738,000	654,000
Q1 2015	10,000	37,000	88,000	46,000	134,000	738,000	692,000	604,000
Q2 2015	14,000	48,000	80,000	62,000	142,000	788,000	726,000	647,000

Source: Labour Force Survey. Time series for the period: Apr-Jun 2010 to Apr-Jun 2015.

Note: Q1 relates to the months January-March, Q2 to April-June, Q3 to July-September and Q4 to October-December

c. Regional NEET	16 year olds	17 year olds	18 year olds	16-17 year olds	16-18 year olds	16-24 year olds	18-24 year olds	19-24 year olds
South East								
London								
East of England								
South West								
West Midlands								
East Midlands								
Yorks & Humber								
North West								
North East								

CCIS data is collected by local authorities and covers only those young people known to them. As a result, the number of young people known to local authorities to be NEET is considerably lower than that estimated by other sources and is excluded from this publication to avoid confusion.

**Table 2: Number Not in Education or Training (NET): England**

d. NET Participation SFR series	16 year olds	17 year olds	18 year olds	16-17 year olds	16-18 year olds	16-24 year olds	18-24 year olds	19-24 year olds
End 2000	82,700	116,300	222,400	198,900	421,300			
End 2001	88,300	131,500	235,200	219,800	455,100			
End 2002	80,100	135,200	242,300	215,300	457,600			
End 2003	75,700	125,800	251,200	201,500	452,700			
End 2004	74,500	124,200	245,500	198,700	444,200			
End 2005	68,300	122,300	241,000	190,600	431,600			
End 2006	67,200	117,500	250,300	184,700	434,900			
End 2007	66,700	116,100	245,700	182,800	428,400			
End 2008	52,800	114,000	253,100	166,900	420,000			
End 2009	44,700	87,500	247,200	132,200	379,400			
End 2010	42,800	81,800	230,300	124,600	354,900			
End 2011	41,900	80,500	205,300	122,400	327,700			
End 2012	44,800	72,100	205,700	116,900	322,600			
End 2013	28,900	70,300	187,000	99,200	286,200			
End 2014	23,100	58,700	182,000	81,800	263,800			

Source: Labour Force Survey and Admin Data. Period: End 2000 to End 2014

e. NET Quarterly LFS series*	16 year olds	17 year olds	18 year olds	16-17 year olds	16-18 year olds	16-24 year olds	18-24 year olds	19-24 year olds
Q2 2010	43,000	109,000	223,000	152,000	374,000	2,703,000	2,552,000	2,329,000
Q3 2010	54,000	181,000	265,000	235,000	500,000	3,064,000	2,829,000	2,564,000
Q4 2010	36,000	63,000	204,000	99,000	303,000	2,733,000	2,633,000	2,429,000
Q1 2011	45,000	75,000	208,000	119,000	327,000	2,738,000	2,618,000	2,411,000
Q2 2011	55,000	101,000	222,000	156,000	378,000	2,941,000	2,786,000	2,563,000
Q3 2011	69,000	155,000	233,000	224,000	457,000	3,126,000	2,902,000	2,669,000
Q4 2011	40,000	75,000	183,000	115,000	298,000	2,711,000	2,596,000	2,413,000
Q1 2012	46,000	81,000	187,000	127,000	314,000	2,697,000	2,570,000	2,383,000
Q2 2012	52,000	98,000	216,000	150,000	366,000	2,880,000	2,730,000	2,514,000
Q3 2012	47,000	132,000	226,000	179,000	405,000	3,035,000	2,856,000	2,630,000
Q4 2012	30,000	55,000	195,000	85,000	280,000	2,720,000	2,635,000	2,440,000
Q1 2013	30,000	60,000	191,000	90,000	281,000	2,668,000	2,578,000	2,387,000
Q2 2013	36,000	88,000	200,000	123,000	324,000	2,792,000	2,668,000	2,468,000
Q3 2013	43,000	149,000	221,000	191,000	412,000	3,066,000	2,875,000	2,653,000
Q4 2013	24,000	49,000	193,000	73,000	266,000	2,683,000	2,610,000	2,417,000
Q1 2014	23,000	49,000	178,000	72,000	251,000	2,595,000	2,523,000	2,344,000
Q2 2014	29,000	78,000	195,000	107,000	302,000	2,779,000	2,672,000	2,477,000
Q3 2014	37,000	132,000	220,000	169,000	389,000	3,008,000	2,839,000	2,620,000
Q4 2014	18,000	54,000	176,000	71,000	247,000	2,593,000	2,522,000	2,346,000
Q1 2015	11,000	60,000	185,000	71,000	256,000	2,617,000	2,546,000	2,362,000
Q2 2015	18,000	87,000	190,000	105,000	295,000	2,770,000	2,665,000	2,475,000

Source: Labour Force Survey. Time series for the period: Apr-Jun 2010 to Apr-Jun 2015.

Note: Q1 relates to the months January-March, Q2 to April-June, Q3 to July-September and Q4 to October-December

**Table 3: Percentage Not in Education, Employment or Training (NEET): England**

a. NEET Participation SFR series	16 year olds	17 year olds	18 year olds	16-17 year olds	16-18 year olds	16-24 year olds	18-24 year olds	19-24 year olds
End 2000	6.7%	7.4%	12.2%	7.0%	8.7%			
End 2001	7.4%	9.1%	12.2%	8.2%	9.5%			
End 2002	7.6%	9.0%	12.2%	8.3%	9.6%			
End 2003	7.0%	7.5%	12.4%	7.2%	9.0%			
End 2004	6.9%	8.3%	12.3%	7.6%	9.2%			
End 2005	7.4%	9.5%	13.2%	8.5%	10.0%			
End 2006	6.8%	8.9%	13.5%	7.8%	9.8%			
End 2007	6.1%	8.8%	13.8%	7.5%	9.6%			
End 2008	5.8%	9.1%	16.3%	7.5%	10.4%			
End 2009	5.5%	7.8%	16.5%	6.7%	10.0%			
End 2010	5.1%	8.2%	14.0%	6.7%	9.2%			
End 2011	5.4%	8.4%	15.3%	7.0%	9.8%			
End 2012	5.9%	7.2%	14.6%	6.5%	9.3%			
End 2013	4.0%	6.3%	12.9%	5.2%	7.7%			
End 2014	3.3%	5.4%	13.1%	4.4%	7.3%			

Source: Labour Force Survey and Admin Data, Period: End 2000 to End 2014

b. NEET Quarterly LFS series*	16 year olds	17 year olds	18 year olds	16-17 year olds	16-18 year olds	16-24 year olds	18-24 year olds	19-24 year olds
Q2 2010	5.2%	10.1%	15.2%	7.8%	10.3%	14.4%	16.3%	16.5%
Q3 2010	6.2%	15.0%	19.1%	10.8%	13.5%	17.1%	18.9%	18.9%
Q4 2010	4.3%	6.6%	13.9%	5.4%	8.3%	15.6%	18.3%	19.0%
Q1 2011	5.3%	8.0%	12.4%	6.6%	8.5%	15.3%	17.7%	18.6%
Q2 2011	6.5%	9.1%	14.6%	7.8%	10.1%	16.3%	18.6%	19.3%
Q3 2011	7.7%	15.5%	18.4%	11.6%	13.9%	19.4%	21.5%	22.0%
Q4 2011	5.1%	8.1%	14.9%	6.6%	9.4%	16.0%	18.5%	19.0%
Q1 2012	6.2%	9.0%	13.8%	7.6%	9.7%	15.8%	18.0%	18.7%
Q2 2012	5.8%	9.7%	15.9%	7.8%	10.6%	16.2%	18.4%	18.7%
Q3 2012	4.3%	12.7%	14.9%	8.6%	10.7%	17.2%	19.4%	20.1%
Q4 2012	3.6%	5.3%	14.5%	4.5%	8.0%	14.9%	17.6%	18.1%
Q1 2013	4.6%	6.1%	13.8%	5.4%	8.3%	15.0%	17.6%	18.1%
Q2 2013	5.0%	8.1%	14.4%	6.7%	9.2%	15.4%	17.7%	18.2%
Q3 2013	5.4%	14.5%	16.3%	10.1%	12.2%	17.6%	19.5%	20.0%
Q4 2013	3.2%	4.9%	14.3%	4.1%	7.6%	14.1%	16.7%	17.1%
Q1 2014	3.2%	4.6%	12.6%	3.8%	6.8%	13.0%	15.4%	15.9%
Q2 2014	3.8%	7.4%	13.0%	5.6%	8.1%	13.5%	15.6%	16.0%
Q3 2014	4.8%	11.5%	15.2%	8.2%	10.6%	15.4%	17.3%	17.6%
Q4 2014	2.5%	5.2%	13.0%	3.9%	7.0%	13.1%	15.5%	15.9%
Q1 2015	1.6%	5.7%	14.0%	3.7%	7.1%	12.3%	14.6%	14.7%
Q2 2015	2.3%	7.6%	12.6%	5.0%	7.5%	13.1%	15.3%	15.7%

Source: Labour Force Survey. Time series for the period: Apr-Jun 2010 to Apr-Jun 2015.

Note: Q1 relates to the months January-March, Q2 to April-June, Q3 to July-September and Q4 to October-December

c. Regional NEET	16 year olds	17 year olds	18 year olds	16-17 year olds	16-18 year olds	16-24 year olds	18-24 year olds	19-24 year olds
South East	1.8%	4.0%	7.4%	2.9%	4.2%			
London	1.5%	3.0%	5.9%	2.3%	3.4%			
East of England	2.1%	4.3%	7.4%	3.2%	4.5%			
South West	1.9%	4.3%	7.8%	3.1%	4.5%			
West Midlands	2.8%	4.7%	8.8%	3.8%	5.4%			
East Midlands	2.0%	4.1%	7.1%	3.0%	4.4%			
Yorks & Humber	2.5%	5.1%	7.9%	3.8%	5.1%			
North West	2.7%	4.8%	8.1%	3.8%	5.2%			
North East	3.1%	6.1%	11.8%	4.6%	7.0%			

Source: Client Caseload Information System. Period: Nov 2014 to Jan 2015 average.

CCIS data is collected by local authorities and covers only those young people known to them. As a result, the number of young people known to local authorities to be NEET is considerably lower than that estimated by other sources and is excluded from this publication to avoid confusion.

**Table 4: Percentage Not in Education or Training (NET): England**

d. NET Participation SFR series	16 year olds	17 year olds	18 year olds	16-17 year olds	16-18 year olds	16-24 year olds	18-24 year olds	19-24 year olds
End 2000	13.6%	19.4%	38.0%	16.5%	23.5%			
End 2001	14.0%	21.5%	39.1%	17.7%	24.7%			
End 2002	12.8%	21.3%	39.2%	17.1%	24.3%			
End 2003	11.9%	19.9%	39.0%	15.9%	23.7%			
End 2004	11.4%	19.4%	38.4%	15.3%	22.9%			
End 2005	10.5%	18.5%	37.1%	14.6%	22.0%			
End 2006	10.1%	18.0%	37.4%	14.0%	21.9%			
End 2007	9.9%	17.3%	37.0%	13.6%	21.3%			
End 2008	7.9%	16.7%	37.2%	12.3%	20.7%			
End 2009	6.8%	12.9%	35.6%	9.9%	18.7%			
End 2010	6.5%	12.3%	33.5%	9.4%	17.7%			
End 2011	6.5%	12.1%	30.6%	9.3%	16.5%			
End 2012	6.9%	11.1%	30.7%	9.0%	16.4%			
End 2013	4.5%	10.8%	28.5%	7.6%	14.6%			
End 2014	3.6%	9.0%	27.7%	6.4%	13.6%			

Source: Labour Force Survey and Admin Data, Period: End 2000 to End 2014

e. NET Quarterly LFS series*	16 year olds	17 year olds	18 year olds	16-17 year olds	16-18 year olds	16-24 year olds	18-24 year olds	19-24 year olds
Q2 2010	6.9%	16.1%	33.3%	11.7%	19.1%	45.2%	54.4%	57.9%
Q3 2010	8.6%	26.7%	40.8%	18.0%	25.6%	51.4%	60.7%	64.0%
Q4 2010	5.5%	10.1%	31.0%	7.8%	15.7%	45.5%	55.8%	59.8%
Q1 2011	6.7%	11.8%	31.4%	9.2%	16.7%	45.4%	55.3%	59.2%
Q2 2011	8.4%	16.0%	33.8%	12.1%	19.5%	48.6%	58.5%	62.4%
Q3 2011	10.6%	23.8%	34.9%	17.2%	23.2%	51.4%	60.6%	64.8%
Q4 2011	6.4%	11.7%	28.6%	9.1%	15.6%	44.8%	54.3%	58.3%
Q1 2012	7.3%	12.5%	29.0%	9.9%	16.3%	44.6%	53.9%	57.9%
Q2 2012	8.3%	15.5%	33.0%	11.9%	19.1%	47.4%	56.8%	60.5%
Q3 2012	7.7%	20.6%	35.4%	14.3%	21.4%	50.2%	59.6%	63.3%
Q4 2012	4.9%	8.7%	29.4%	6.8%	14.7%	45.2%	55.2%	59.3%
Q1 2013	5.1%	8.8%	29.3%	7.1%	14.7%	44.1%	53.8%	57.7%
Q2 2013	5.9%	12.8%	32.6%	9.5%	17.0%	46.0%	55.8%	59.2%
Q3 2013	7.2%	23.2%	34.1%	15.4%	21.9%	50.5%	59.5%	63.5%
Q4 2013	3.7%	8.1%	29.6%	5.8%	14.0%	44.5%	54.6%	58.6%
Q1 2014	3.5%	8.2%	28.1%	5.8%	13.3%	43.4%	53.3%	57.2%
Q2 2014	4.7%	12.5%	30.6%	8.6%	16.1%	46.3%	56.1%	60.0%
Q3 2014	5.9%	21.0%	33.7%	13.5%	20.4%	49.7%	59.2%	63.2%
Q4 2014	2.9%	8.3%	27.1%	5.7%	13.0%	43.0%	52.8%	56.9%
Q1 2015	1.8%	9.3%	29.3%	5.6%	13.5%	43.5%	53.6%	57.3%
Q2 2015	2.9%	13.7%	30.2%	8.4%	15.7%	46.2%	56.1%	60.1%

Source: Labour Force Survey, Period: Apr-Jun 2010 to Apr-Jun 2015 time series

Note: Q1 relates to the months January-March, Q2 to April-June, Q3 to July-September and Q4 to October-December

Additional tables are published with this brief – these show a regional breakdown of the quarterly NEET statistics for 16-24, 18-24 and 19-24 year olds, and time-series data from 2000. Please see the [DfE NEET Statistics - Quarterly Brief – April to June 2015](#) webpage.



Department  
for Education



© Crown copyright 2015.

You may re-use this information (excluding logos) free of charge in any format or medium, under the terms of the Open Government Licence. To view this licence, visit [Open Government Licence](#) or e-mail: [psi@nationalarchives.gsi.gov.uk](mailto:psi@nationalarchives.gsi.gov.uk).

Where we have identified any third party copyright information you will need to obtain permission from the copyright holders concerned.

Any enquiries regarding this publication should be sent to us at:

[Post16.STATISTICS@education.gsi.gov.uk](mailto:Post16.STATISTICS@education.gsi.gov.uk)

This document is also available from our website at: [DFE-NEET-Statistics](#)