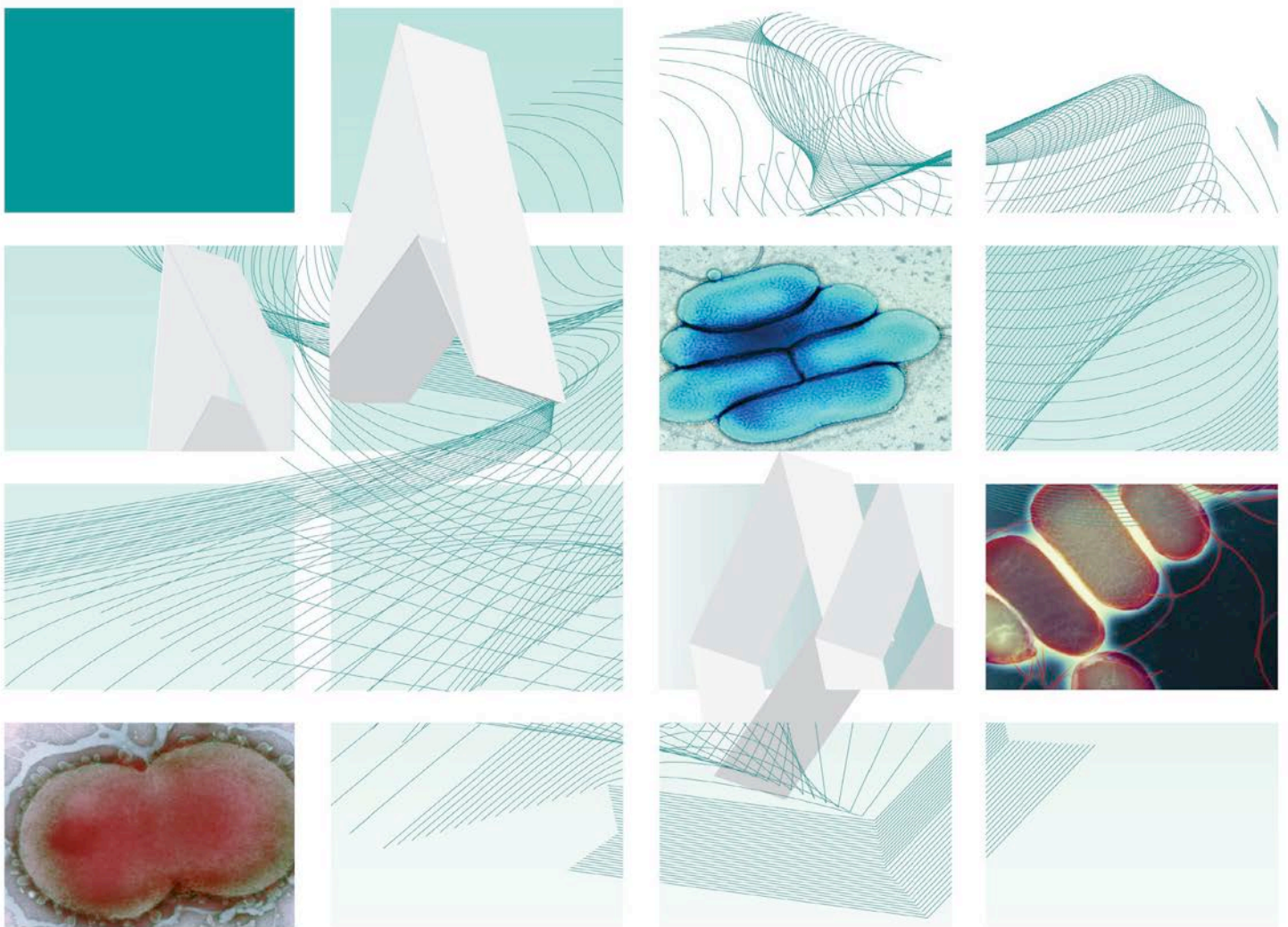




# UK Standards for Microbiology Investigations

## Identification of *Helicobacter* species



## Acknowledgments

UK Standards for Microbiology Investigations (SMIs) are developed under the auspices of Public Health England (PHE) working in partnership with the National Health Service (NHS), Public Health Wales and with the professional organisations whose logos are displayed below and listed on the website <https://www.gov.uk/uk-standards-for-microbiology-investigations-smi-quality-and-consistency-in-clinical-laboratories>. SMIs are developed, reviewed and revised by various working groups which are overseen by a steering committee (see <https://www.gov.uk/government/groups/standards-for-microbiology-investigations-steering-committee>).

The contributions of many individuals in clinical, specialist and reference laboratories who have provided information and comments during the development of this document are acknowledged. We are grateful to the Medical Editors for editing the medical content.

For further information please contact us at:

Standards Unit  
Microbiology Services  
Public Health England  
61 Colindale Avenue  
London NW9 5EQ

E-mail: [standards@phe.gov.uk](mailto:standards@phe.gov.uk)

Website: <https://www.gov.uk/uk-standards-for-microbiology-investigations-smi-quality-and-consistency-in-clinical-laboratories>

PHE Publications gateway number: 2015075

UK Standards for Microbiology Investigations are produced in association with:



Logos correct at time of publishing.

# Contents

---

ACKNOWLEDGMENTS .....	2
AMENDMENT TABLE .....	4
UK STANDARDS FOR MICROBIOLOGY INVESTIGATIONS: SCOPE AND PURPOSE.....	6
SCOPE OF DOCUMENT .....	9
INTRODUCTION .....	9
TECHNICAL INFORMATION/LIMITATIONS.....	15
1 SAFETY CONSIDERATIONS .....	17
2 TARGET ORGANISMS.....	17
3 IDENTIFICATION.....	17
4 IDENTIFICATION OF <i>HELICOBACTER</i> SPECIES.....	21
5 REPORTING .....	22
6 REFERRALS.....	22
7 NOTIFICATION TO PHE OR EQUIVALENT IN THE DEVOLVED ADMINISTRATIONS .....	23
REFERENCES .....	24



NICE has accredited the process used by Public Health England to produce Standards for Microbiology Investigations. Accreditation is valid for 5 years from July 2011. More information on accreditation can be viewed at [www.nice.org.uk/accreditation](http://www.nice.org.uk/accreditation).

For full details on our accreditation visit: [www.nice.org.uk/accreditation](http://www.nice.org.uk/accreditation).

## Amendment table

Each SMI method has an individual record of amendments. The current amendments are listed on this page. The amendment history is available from [standards@phe.gov.uk](mailto:standards@phe.gov.uk).

New or revised documents should be controlled within the laboratory in accordance with the local quality management system.

Amendment No/Date.	5/03.07.15
Issue no. discarded.	2.2
Insert Issue no.	3
<b>Section(s) involved</b>	<b>Amendment</b>
Whole document.	Hyperlinks updated to gov.uk.
Page 2.	Updated logos added.
Whole document.	Document presented in a new format. Reorganisation of some text. Edited for clarity. Test procedures updated. Updated contact details of Reference Laboratories.
Scope of document	The scope has been edited for clarity.
Introduction.	The taxonomy of <i>Helicobacter</i> species has been updated. More information has been added to the Characteristics section. The medically important species have been grouped and their characteristics described. Use of up-to-date references. Section on Principles of identification has been amended accordingly.
Technical information/limitations.	Addition of information regarding staining techniques has been described and referenced.
Safety considerations.	Reference added. Update on Laboratory-acquired infections.
Target organisms.	The section on the Target organisms has been updated and presented clearly. References have been updated.

Identification.	<p>Addition of information to 3.1 and 3.3.</p> <p>Amendments and updates have been done on 3.2 and 3.4 have been updated to reflect standards in practice.</p> <p>Section 3.4.2, 3.4.3 and 3.4.4 has been updated to include Commercial Identification Systems, MALDI-TOF MS and NAATs with references.</p> <p>Subsection 3.5 has been updated to include the Rapid Molecular Methods.</p>
Identification flowchart.	Modification of flowchart for identification of species has been done for easy guidance.
Reporting.	Subsections 5.1, 5.2 and 5.5 have been updated.
Referral.	The contact details of the reference laboratories have been updated.
References.	Some references updated.

# UK Standards for Microbiology Investigations<sup>#</sup>: scope and purpose

---

## Users of SMIs

- SMIs are primarily intended as a general resource for practising professionals operating in the field of laboratory medicine and infection specialties in the UK.
- SMIs provide clinicians with information about the available test repertoire and the standard of laboratory services they should expect for the investigation of infection in their patients, as well as providing information that aids the electronic ordering of appropriate tests.
- SMIs provide commissioners of healthcare services with the appropriateness and standard of microbiology investigations they should be seeking as part of the clinical and public health care package for their population.

## Background to SMIs

SMIs comprise a collection of recommended algorithms and procedures covering all stages of the investigative process in microbiology from the pre-analytical (clinical syndrome) stage to the analytical (laboratory testing) and post analytical (result interpretation and reporting) stages.

Syndromic algorithms are supported by more detailed documents containing advice on the investigation of specific diseases and infections. Guidance notes cover the clinical background, differential diagnosis, and appropriate investigation of particular clinical conditions. Quality guidance notes describe laboratory processes which underpin quality, for example assay validation.

Standardisation of the diagnostic process through the application of SMIs helps to assure the equivalence of investigation strategies in different laboratories across the UK and is essential for public health surveillance, research and development activities.

## Equal partnership working

SMIs are developed in equal partnership with PHE, NHS, Royal College of Pathologists and professional societies.

The list of participating societies may be found at <https://www.gov.uk/uk-standards-for-microbiology-investigations-smi-quality-and-consistency-in-clinical-laboratories>.

Inclusion of a logo in an SMI indicates participation of the society in equal partnership and support for the objectives and process of preparing SMIs. Nominees of professional societies are members of the Steering Committee and Working Groups which develop SMIs. The views of nominees cannot be rigorously representative of the members of their nominating organisations nor the corporate views of their organisations. Nominees act as a conduit for two way reporting and dialogue. Representative views are sought through the consultation process.

SMIs are developed, reviewed and updated through a wide consultation process.

---

<sup>#</sup>Microbiology is used as a generic term to include the two GMC-recognised specialties of Medical Microbiology (which includes Bacteriology, Mycology and Parasitology) and Medical Virology.

## Quality assurance

NICE has accredited the process used by the SMI Working Groups to produce SMIs. The accreditation is applicable to all guidance produced since October 2009. The process for the development of SMIs is certified to ISO 9001:2008.

SMIs represent a good standard of practice to which all clinical and public health microbiology laboratories in the UK are expected to work. SMIs are NICE accredited and represent neither minimum standards of practice nor the highest level of complex laboratory investigation possible. In using SMIs, laboratories should take account of local requirements and undertake additional investigations where appropriate. SMIs help laboratories to meet accreditation requirements by promoting high quality practices which are auditable. SMIs also provide a reference point for method development.

The performance of SMIs depends on competent staff and appropriate quality reagents and equipment. Laboratories should ensure that all commercial and in-house tests have been validated and shown to be fit for purpose. Laboratories should participate in external quality assessment schemes and undertake relevant internal quality control procedures.

## Patient and public involvement

The SMI Working Groups are committed to patient and public involvement in the development of SMIs. By involving the public, health professionals, scientists and voluntary organisations the resulting SMI will be robust and meet the needs of the user. An opportunity is given to members of the public to contribute to consultations through our open access website.

## Information governance and equality

PHE is a Caldicott compliant organisation. It seeks to take every possible precaution to prevent unauthorised disclosure of patient details and to ensure that patient-related records are kept under secure conditions.

The development of SMIs are subject to PHE Equality objectives <https://www.gov.uk/government/organisations/public-health-england/about/equality-and-diversity>. The SMI Working Groups are committed to achieving the equality objectives by effective consultation with members of the public, partners, stakeholders and specialist interest groups.

## Legal statement

Whilst every care has been taken in the preparation of SMIs, PHE and any supporting organisation, shall, to the greatest extent possible under any applicable law, exclude liability for all losses, costs, claims, damages or expenses arising out of or connected with the use of an SMI or any information contained therein. If alterations are made to an SMI, it must be made clear where and by whom such changes have been made.

The evidence base and microbial taxonomy for the SMI is as complete as possible at the time of issue. Any omissions and new material will be considered at the next review. These standards can only be superseded by revisions of the standard, legislative action, or by NICE accredited guidance.

SMIs are Crown copyright which should be acknowledged where appropriate.

**Suggested citation for this document**

Public Health England. (2015). Identification of *Helicobacter* species. UK Standards for Microbiology Investigations. ID 26 Issue 3. <https://www.gov.uk/uk-standards-for-microbiology-investigations-smi-quality-and-consistency-in-clinical-laboratories>



## Scope of document

---

This SMI describes the identification of *Helicobacter* species.

This SMI should be used in conjunction with other SMIs.

## Introduction

---

### Taxonomy

The *Helicobacter* genus belongs to class *Epsilonproteobacteria*, order *Campylobacterales*, family *Helicobacteraceae*. The genus *Helicobacter* was defined in 1989 with two species (*Helicobacter pylori* and *Helicobacter mustelae*) and revised in 1991 to include *Helicobacter cinaedi* and *Helicobacter fennelliae*. It currently comprises of 32 validly published species most of which are isolated from gastric or intestinal sites in animals<sup>1,2,3</sup>. *Helicobacter winghamensis* has not been included in the published taxonomy because it has no standing in nomenclature.

*Helicobacter pylori* is the type species.

### Characteristics

*Helicobacter* species are helical, curved or straight Gram negative organisms, 0.5-1.0µm x 2.5-5.0µm long with rounded ends. In older cultures the organisms appear as coccoid bodies with an associated loss in culturability<sup>4</sup>. Endospores are not formed. They have a rapid darting motility by means of multiple sheathed flagella that are unipolar or bipolar and lateral with terminal bulbs. There is considerable diversity among species in flagellum morphology. Flagella are typically sheathed; for example, *H. pylori* have multiple (four to eight per cell) mono-polar sheathed flagella with terminal knobs, whilst others have unsheathed flagella.

The optimum growth temperature is 35-37°C. Some species grow poorly at 42°C and 30°C; none grow at 25°C. *Helicobacter* species are microaerophilic and grow best in an atmosphere of 86% N<sub>2</sub>, 4% O<sub>2</sub> with 5% CO<sub>2</sub> and 5% H<sub>2</sub>. They can also grow anaerobically. Visible colonies appear in 2-5 days. Colonies on supplemented blood agar are non-pigmented, greyish in colour, circular (1-2mm in diameter), convex and translucent in appearance. On 5% blood agar the colonies are translucent grey with slight haemolysis.

*Helicobacter* species are oxidase and catalase positive except *Helicobacter canis*, which is catalase negative but oxidase positive. Nitrate reduction and urease production are variable among species. They show no growth in the presence of 3.5% NaCl.

They are susceptible to penicillin, ampicillin, amoxicillin, erythromycin, gentamicin, kanamycin, rifampin and tetracycline and are resistant to vancomycin, sulfonamides, and trimethoprim. They have a variable resistance to nalidixic acid, cephalothin, metronidazole and polymyxin<sup>1</sup>.

They have been isolated from the gastric mucosa of primates and ferrets, and some organisms in the genus may be associated with gastritis and peptic ulceration.

The genus can be broadly divided into three groups:

1. The gastric *Helicobacter* species colonize the stomachs of humans and animals and produce a potent urease which converts urea into ammonia and effectively

allows them to survive by neutralising gastric acid in the vicinity of the cell. The growth of *Helicobacter* species from gastric biopsies is covered in [B 55 - Investigation of gastric biopsies for \*Helicobacter pylori\*](#). However, most of this group are extremely difficult to grow and with the exception of *H. pylori* (and possibly *H. felis*) are unlikely to be encountered outside of specialist laboratories.

2. The entero-hepatic *Helicobacter* species inhabit the intestinal and hepatobiliary tracts of various mammal and bird hosts, and several species, such as *H. bilis*, *H. canis*, *H. cinaedi*, *H. fennelliae*, infect humans with clinical symptoms (Table 1) *H. cinaedi* was initially described in homosexual men with proctitis<sup>2</sup>. Infections may present in various clinical manifestations (proctocolitis, gastroenteritis, neonatal meningitis, localized pain and rash, and bacteremia), particularly in individuals with underlying immunosuppressive conditions, such as AIDS, malignant diseases, and chronic alcoholism<sup>5</sup>. *H. fennelliae* was also first described from rectal swabs of homosexual men with symptoms of proctitis and has subsequently been implicated as a cause of bacteremia, particularly in immune-compromised individuals<sup>5</sup>. Other species of *Helicobacter* isolated occasionally from infected humans but of unclear clinical significance include *H. canis* from cases of bacteremia and multifocal cellulitis and *H. bilis* from cases of bacteremia and human gallbladder tissue<sup>5-7</sup>. These bacteria may occasionally be encountered in the routine laboratory either from blood culture or from swabs or tissues from immunocompromised individuals.
3. The third group of *Helicobacter* species lack sheathed flagella and possess elements of an N-linked glycosylation system and in this respect they resemble *Campylobacter* species<sup>8</sup>. *H. canadensis*, *H. pullorum*, and *H. winghamensis* infect humans. *H. pullorum* is a recognized zoonotic risk, as it has been identified in uncooked retail chicken<sup>9</sup>. *H. pullorum* has been associated with several cases of human gastroenteritis<sup>10</sup>. These species are most likely to be encountered on the faeces bench, where they are most likely to be misidentified as *Campylobacter* species.

### The medically important *Helicobacter* species are;

#### ***Helicobacter pylori***

*H. pylori* appear on Gram stained smears as curved or comma-shaped rods that demonstrate bluntly rounded ends, and spiral or helical shapes are less evident. *H. pylori* typically have up to six polar sheathed flagella which are essential for bacterial motility.

On blood based plates, *H. pylori* colonies are usually small (1-2mm), circular and convex after 3-5 days. Plates are incubated for up to seven days routinely and for up to ten days post-treatment of the patient. Colonies are very small on blood agar containing 5% horse blood; growth is enhanced by the addition of 10% blood. They show growth in the presence of air enriched with 10% CO<sub>2</sub> and no growth anaerobically at 37°C.

They are positive for urease (strongly positive), catalase and oxidase reactions and are negative for hippurate and nitrate reduction tests.

*H. pylori* is becoming increasingly resistant to metronidazole and clarithromycin<sup>11,12</sup>. Resistance to ampicillin and tetracycline is rare.

*Helicobacter pylori* colonize the human stomach's antral region and gastric mucosal surfaces where they release pathogenic proteins that induce cell injury and inflammation.

It has been isolated from the gastric mucosa of primates and have been found in human cases of gastritis and gastric and duodenal ulcers<sup>1</sup>.

### ***Helicobacter cinaedi*<sup>13</sup>**

They are helical, curved, or straight unbranched cells that are 0.3-1.0µm wide and 1.5-5µm long and have rounded ends and spiral periodicity. They are non-spore-forming. Cells in old cultures may form spherical or coccoid bodies. *H. cinaedi* is motile by means of a single polar-sheathed flagellum.

Optimal growth occurs at 37°C in a humid atmosphere; no growth occurs at 25 or 42°C. No growth occurs in the presence of 3.5% NaCl. Growth occurs in the presence of 0.5% glycine and 0.04% triphenyltetrazolium chloride.

They are positive for nitrate reduction, catalase and oxidase activities. They are negative for urease test, pigment production, H<sub>2</sub>S production in triple sugar iron agar and hippurate hydrolysis.

*H. cinaedi* has been isolated from humans – blood and rectum.

### ***Helicobacter fennelliae*<sup>13</sup>**

They are helical, curved, or straight unbranched cells that are 0.3-0.5µm wide and 1.5-5µm long and have rounded ends and spiral periodicity. They are non-spore-forming. Cells in old cultures may form spherical or coccoid bodies. *H. fennelliae* is motile by means of a single polar-sheathed flagellum.

Optimal growth occurs at 37°C in a humid atmosphere; no growth occurs at 25 or 42°C. No growth occurs in the presence of 3.5% NaCl. Growth occurs in the presence of 0.5% glycine and 0.04% triphenyltetrazolium chloride.

They are positive for alkaline phosphatase activity, catalase and oxidase activities. They are negative for urease test, nitrate reduction, pigment production, H<sub>2</sub>S production in triple sugar iron agar and hippurate hydrolysis.

*H. fennelliae* has been isolated from humans – intestine and rectum.

### ***Helicobacter canis*<sup>14</sup>**

They are non-spore-forming, helically curved and slender rod-shaped cells; typically 0.25 x 4µm. Cells have one to two spiral turns, and carry single bipolar sheathed flagella. It exhibits darting motility in hanging drop preparations of broth cultures. Colonies are pinpoint, non-pigmented, translucent and α-haemolytic after 48hr on blood agar. They are microaerophilic and show no growth under aerobic or anaerobic conditions. There is no growth at 25°C, but growth at 37°C and 42°C (thermotolerant).

*H. canis* are positive for oxidase test and alkaline phosphatase and DNase activity but are negative for catalase or urease tests, glucose fermentation, Hydrogen sulphide production in triple sugar iron medium, neither nitrate nor selenite reduction and hippurate hydrolysis. They are also tolerant to 1.5% bile, but not to safranin 'O'.

They are resistant to polymyxin B and sensitive to nalidixic acid.

It has been isolated from faeces of diarrhoeal or healthy domestic dogs and from human faeces.

***Helicobacter pullorum*<sup>13</sup>**

Cells are non-spore-forming, gently curved, slender, rod-shaped, 3-4µm in length. Cells carry an unsheathed monopolar flagellum and have a typical darting motility. They are microaerophilic and grow microaerobically at 37°C and 42°C. There is no growth under aerobic conditions or anaerobically [on 0.1% trimethylamine *N*-oxide (TMAO) medium]. Colonies are pinpoint, non-pigmented, translucent and α-haemolytic on 5% horse blood agar.

They are positive for oxidase and nitrate reduction. Most strains produce catalase. They are negative for urease production, alkaline phosphatase activity, hippurate and indoxyl acetate hydrolysis.

*H. pullorum* has the same biochemical features as *Campylobacter lari* except its intolerance to 2% NaCl and its sensitivity to nalidixic acid<sup>15</sup>.

They are resistant to cephalothin and cefoperazone and sensitive to nalidixic acid.

It has been isolated from poultry and from human patients with gastroenteritis<sup>16</sup>.

***Helicobacter bizzozeronii*<sup>17</sup>**

The cells are spirals that are 0.3µm wide by 5-10µm long. They do not have periplasmic fibrils. In older cultures, coccoid forms predominate. They are motile by means of tufts of 10 to 20 sheathed flagella at both ends of each cell. Individual colonies are not usually produced on agar media, but cultures grow as spreading films on fresh moist agar media. They do not grow on medium containing 1% ox bile, 1% glycine, or 1.5% NaCl. They grow at 37 and 42°C but not at 25°C.

All strains are oxidase, catalase, and urease positive. They reduce nitrate and triphenyltetrazolium chloride (TTC), and they are positive in indoxyl acetate, γ-glutamyl transpeptidase, and alkaline phosphatase tests. They are negative for hippurate hydrolysis, pyrrolidonyl arylamidase, L-arginine arylamidase, and L-aspartate arylamidase tests.

They are resistant to nalidixic acid and susceptible to cephalothin, cefoperazone, and metronidazole. All of the biochemical and tolerance characteristics except indoxyl acetate hydrolysis are similar to the characteristics of *H. felis*. All *H. bizzozeronii* strains and *H. felis* produce DNase.

It has been isolated from dogs and humans.

***Helicobacter cynogastricus*<sup>18</sup>**

Cells are tightly coiled spirals that are up to 1µm wide by 10–18µm long. They possess one periplasmic fibril running along the external side of the helix. In older cultures, coccoid cells predominate. They are motile by means of tufts of 6–12 sheathed flagella at one or both ends of the cell with a movement similar to that of *H. felis* and *H. bizzozeronii*.

Growth on moist agar plates occurs as a spreading film or as an oily layer on biphasic culture media in a microaerobic and anaerobic atmosphere. Pinpoint colonies may be formed on dry agar plates, although bacteria are transformed into coccoids. They grow at 30 and 37°C, but not at 25 or 42°C. They do not grow on media containing 1% ox bile, 1% glycine or 1.5% NaCl.

They are positive for oxidase, catalase and urease tests, nitrate reduction, triphenyltetrazolium chloride reduction, esterase, γ-glutamyl transpeptidase, L-arginine arylamidase and alkaline phosphatase. Negative results are obtained in tests for

hippurate and indoxyl acetate hydrolysis, pyrrolidonyl arylamidase and L-aspartate arylamidase activities. The clinical significance of *H. cynogastricus* is unknown.

It has been isolated from the gastric mucosa of a dog and from humans.

***Helicobacter salomonis*<sup>19</sup>**

The cells are loose spirals that are 0.8-1.2µm wide by 5-7µm long. They do not have periplasmic fibrils. In older cultures, coccoids predominate. They are motile by means of tufts of 10 to 23 sheathed flagella at one or both ends of the cell; the movement is slower than that of *H. felis* or *H. bizzozeronii*.

They do not grow on media containing 1% ox bile, 1% glycine, or 1.5% NaCl. They grow at 37°C, but not at 25 or 42°C. Individual colonies are not formed, but cultures grow as thin, non-haemolytic spreading films on fresh moist agar media.

All strains are oxidase, catalase, and urease positive. They reduce nitrate and triphenyltetrazolium chloride (TTC), and are also positive for indoxyl acetate, γ-glutamyl transpeptidase, and alkaline phosphatase tests. They are negative for hippurate hydrolysis, pyrrolidonyl arylamidase, L-arginine arylamidase and L-aspartate arylamidase tests. Most strains produce DNase.

They are resistant to nalidixic acid and are susceptible to cephalothin and cefoperazone.

It has been isolated from gastric biopsy of a healthy dog and from humans.

***Helicobacter suis*<sup>20</sup>**

Cells are tightly coiled spirals with up to six turns that are approximately 2.3–6.7µm long and approximately 0.9–1.2µm wide. Periplasmic fibrils are not observed. In older cultures, coccoid cells predominate. They are motile by means of tufts of 4 to 10 sheathed flagella at both ends of the cells. The flagella are blunt-ended and some end in a spherical knob that is twice the mean diameter of the flagellar body.

They grow on Brain Heart Infusion agar, *Brucella* agar and on Mueller–Hinton agar supplemented with 20% foetal calf serum or with 10% defibrinated horse blood. It grows in micro-aerophilic conditions, but not in a 5% CO<sub>2</sub> supplemented atmosphere; weak growth is seen after anaerobic incubation. The optimum growth temperature is 37°C, but not at 25°C or 42°C. There is no growth on media supplemented with 1.5% NaCl, 1% glycine, 1% ox bile or 5µg/mL metronidazole.

They are positive for oxidase, catalase and urease tests. They also reduce triphenyltetrazolium chloride (TTC) and esterase; γ-glutamyl transferase, L-arginine arylamidase and alkaline phosphatase activities are present. They are negative for hippurate and indoxyl acetate hydrolysis, nitrate reduction, pyrrolidonyl arylamidase and L-aspartate arylamidase activities.

*H. suis* is associated with ulceration of the non-glandular stomach and gastritis in pigs.

It has been isolated from the gastric mucosa of a pig and humans.

***Helicobacter felis*<sup>13,21</sup>**

They are rigid, spiral-shaped cells that are 0.4µm wide and 5-7.5µm long and have five to seven spirals per cell. Spherical forms (diameter, 2-4µm) are present in older cultures. Endospores are not produced. Cells are motile with a rapid corkscrew-like motion. Cells have tufts of 10 to 17 polar sheathed flagella (thickness, 25 nm) that are positioned slightly off the centre at the end of the cell. Cells are surrounded by

periplasmic fibers which appear as concentric helical cells. They are microaerophilic, but can grow anaerobically.

It grows at 37 and 42°C but not at 25°C. They are nutritionally fastidious, growing only on media enriched with blood or serum. No growth occurs in the presence of 1% glycine and 1.5% NaCl.

They are asaccharolytic and no acid is produced from maltose, sucrose, lactose, fructose, xylose, sorbitol, arabinose, raffinose, glucose, and galactose. They are positive for urease, oxidase, catalase and nitrate reduction tests. Alkaline phosphatase, arginine aminopeptidase, leucine aminopeptidase, and  $\gamma$ -glutamyl transpeptidase activities are detected. Most strains have histidine and leucine aminopeptidase activity.

They are negative for hippurate hydrolysis, indole and H<sub>2</sub>S production. There is also no production of *N*-acetylglucosaminidase,  $\alpha$ -glucosidase,  $\alpha$ -arabinosidase,  $\beta$ -glucosidase,  $\alpha$ -fucosidase,  $\alpha$ -galactosidase,  $\beta$ -galactosidase, indoxylacetate, proline aminopeptidase, pyroglutamic acid amidase, tyrosine aminopeptidase, alanine aminopeptidase, phenylalanine aminopeptidase, glycine aminopeptidase, and arginine dihydrolase.

*H. felis* is susceptible to cephalothin, ampicillin, erythromycin, metronidazole, and bismuth compounds, but resistant to nalidixic acid.

It has been isolated from the gastric mucosa of cats and dogs as well as humans.

### ***Helicobacter bilis*<sup>22</sup>**

Cells are fusiform to slightly spiral and measure 0.5 by 4 to 5  $\mu$ m. In older cultures, coccoid forms with overlapping periplasmic fibers are common. Cells are motile by means of tufts of sheathed flagella numbering 3 to 14 at each end. Colonies are pin-point, but cultures often appear as a thin spreading layer on agar media. There is microaerophilic growth at 37 and 42°C but not at 25°C. There is growth in 20% bile and 0.4% TTC (triphenyltetrazolium chloride), variable growth in 1% glycine, but no growth in 1.5% NaCl.

They are positive for urease, catalase, and oxidase tests, nitrate reduction and H<sub>2</sub>S production. Indoxyl acetate and hippurate are not hydrolysed.

They are resistant to cephalothin and nalidixic acid but sensitive to metronidazole.

It has been isolated from the colons and caeca of mice and the bile and livers of mice with hepatitis.

### ***Helicobacter canadensis*<sup>15</sup>**

Cells are slender, curved to spiral rods (0.3 by 1.5 to 4  $\mu$ m), which have one to three spirals. They are motile by means of non-sheathed, single unipolar or bipolar flagella. Cultures grown on solid agar media appear as spreading layers. Cells exhibit microaerobic but not aerobic or anaerobic growth. Growth occurs at 37 and 42°C. They are urease, alkaline phosphatase, and  $\gamma$ -glutamyl transpeptidase negative but catalase and oxidase positive. The organism hydrolyzes indoxyl acetate, and some strains reduce nitrate to nitrite. Cells are resistant to nalidixic acid and cephalothin.

It has been isolated from the faeces of diarrhoeic humans.

***Helicobacter heilmannii*<sup>23</sup>**

Cells are tightly coiled spirals with up to nine turns, approximately 3.0–6.5mm long and 0.6–0.7mm wide. No periplasmic fibrils are observed and coccoid cells predominate in older cultures. Cells are motile by means of tufts of up to 10 sheathed blunt-ended flagella at both ends of the cells. Growth is observed on BHI agar, on *Brucella* agar and on Mueller–Hinton agar supplemented with 20% fetal calf serum or 10% defibrinated horse blood. Cells are also able to grow in colonies on dry agar plates. They grow in microaerophilic conditions and weak growth is seen after anaerobic incubation. Growth is detected at 37°C, but not at 25 or 42°C. There is no growth on media supplemented with 1% bile, 1.5% NaCl or 1% glycine.

They are positive for oxidase, catalase and urease tests as well as esterase,  $\gamma$ -glutamyltransferase and L-arginine arylamidase. They also reduce triphenyl-tetrazolium chloride and nitrate and hydrolyse hippurate. Pyrrolidonyl arylamidase, L-aspartate arylamidase, indoxyl acetate hydrolysis and alkaline phosphatase are not detected. Its clinical significance in cats is unknown.

*H. heilmannii*, as well as other gastric non- *pylori Helicobacter* species has been associated with gastritis, gastric and duodenal ulcers and low grade MALT lymphoma of the stomach in humans<sup>24</sup>.

This organism has been isolated from the gastric mucosa of a cat and from humans.

***Helicobacter ganmani*<sup>25</sup>**

Cells are curved to spiral rods (0.3 X 2.5 $\mu$ m) with two turns per cell and have single, unsheathed flagella in a bipolar arrangement. Single colonies are rarely seen and are <1mm in diameter, irregular, non-haemolytic, un-pigmented and translucent, after 3-5 days growth on 5% horse blood agar. Pitting of the agar is not observed. They are anaerobic; no growth is obtained in microaerobic or aerobic conditions. All strains grow anaerobically at 37°C on Campylobacter charcoal-deoxycholate (CCD) agar and not at room temperature (18- 22°C), 25 or 42°C, on tyrosine or casein media.

All strains produce oxidase. Weak catalase activity is detected in some strains. Nitrate and triphenyltetrazolium chloride (TTC) are reduced. They are negative for urease, alkaline phosphatase, DNase activity, hippurate or indoxyl acetate hydrolysis. They neither produce hydrogen sulphide nor acid from sugar fermentation in triple-sugar iron agar.

Cells have been isolated from caeca, large bowels, small bowels and livers of mice. It has been implicated in liver disease in children<sup>26,27</sup>.

**Principles of identification**

Colonies from primary isolation plates are identified by colonial morphology, Gram stain and biochemical tests. Isolates may be referred to the Reference Laboratory for confirmation of identification and typing.

**Technical information/limitations****Staining**

It is preferable to stain smears from blood cultures with acridine orange rather than Gram stain<sup>28</sup>.

Organisms stain better from culture plates and biopsy material if carbol fuchsin counterstain is used. Counter staining with Sandiford's counter stain is preferable to neutral red.



## 1 Safety considerations<sup>12,29-44</sup>

---

*Helicobacter pylori* is a Hazard group 2 organism and the processing of diagnostic samples can be carried out at Containment Level 2.

Laboratory acquired infections have been reported, one of them being accidental ingestion of *H. pylori*<sup>45</sup>.

Refer to current guidance on the safe handling of all organisms documented in this SMI.

Laboratory procedures that give rise to infectious aerosols must be conducted in a microbiological safety cabinet<sup>36</sup>.

The above guidance should be supplemented with local COSHH and risk assessments.

Compliance with postal and transport regulations is essential.

## 2 Target organisms

---

***Helicobacter* species reported to have caused human infection<sup>23,26,46,47</sup>**

***Helicobacter pylori*, *Helicobacter cinaedi*, *Helicobacter canis*, *Helicobacter fennelliae*, *Helicobacter pullorum*, *Helicobacter bizzozeronii*, *Helicobacter cynogastricus*, *Helicobacter felis*, *Helicobacter salomonis*, *Helicobacter suis*, *Helicobacter bilis*, *Helicobacter canadensis*, *Helicobacter heilmannii***

***Helicobacter* species that may have caused human infection<sup>26,27</sup>**

*Helicobacter ganmani*

## 3 Identification

---

### 3.1 Microscopic appearance

Gram stain ([TP 39 - Staining procedures](#))

Presence of Gram negative, long, thin, straight or slightly curved to spiral-shaped rods. Spiral or helical shapes are less evident.

Older cultures may produce coccoid forms.

### 3.2 Primary isolation media

Chocolate / Columbia blood agar plate incubated in 5% oxygen with 5-10% CO<sub>2</sub> at 35-37°C for up to 7 days. Incubation for up to 10 days may be required post-treatment.

*H. pylori* selective agar plate incubated in 5% oxygen with 5-10% CO<sub>2</sub> at 35-37°C for up to 7 days. Incubation for up to 10 days may be required post-treatment.

The Reference Laboratory (Gastrointestinal Bacteria Reference Unit, Laboratory of Gastrointestinal Pathogens, PHE, Colindale) recommends the use of 10% Columbia blood agar with and without DENT supplement (vancomycin, trimethoprim, cefsoludin and amphotericin B) and a microaerophilic atmosphere consisting of 86% N<sub>2</sub>, 4% O<sub>2</sub> with 5% CO<sub>2</sub> and 5% H<sub>2</sub> for primary isolation of *Helicobacter* species.

**Note:** The DENT's selective supplement is commercially available.

### 3.3 Colonial appearance

On blood agar, *Helicobacter* colonies appear as small (1mm), grey, translucent and may be slightly haemolytic after 3-5 days. After 6 days of incubation, moist, glassy, swarming colonies are observed on the agar plate.

### 3.4 Test procedures

#### 3.4.1 Biochemical tests

##### Oxidase Test ([TP 26 - Oxidase test](#))

All *Helicobacter* species are oxidase positive.

##### Catalase Test ([TP 8 - Catalase test](#))

*Helicobacter* species are catalase positive except *Helicobacter canis* which are catalase negative.

##### Urease Test ([TP 36 – Urease test](#))

The urease test is used to determine the ability of an organism to split urea, through the production of the enzyme urease.

*H. pylori* is strongly urease positive. Its ability to split urea within 30 seconds distinguishes it from other *Helicobacter* species. See the flowchart for results of other *Helicobacter* species.

#### 3.4.2 Commercial identification system

Several commercial identification kits are available for the speciation of *Helicobacter*. Laboratories should follow manufacturer's instructions and rapid tests and kits and should be validated and be shown to be fit for purpose prior to use. Results should be interpreted in conjunction with the key test results indicated above.

#### 3.4.3 Matrix-assisted laser desorption/ionisation time of flight (MALDI-TOF) mass spectrometry

This has been shown to be a rapid and powerful tool because of its reproducibility, speed and sensitivity of analysis. The advantage of MALDI-TOF as compared with other identification methods is that the results of the analysis are available within a few hours rather than several days. The speed and the simplicity of sample preparation and result acquisition associated with minimal consumable costs make this method well suited for routine and high throughput use<sup>48</sup>.

This technique has been used for the identification of *Helicobacter* species (*H. pullorum* and *H. pametensis*) and their distinction from phenotypically similar *Campylobacter* species in clinical diagnostics<sup>49</sup>. However, this technique has not been very successful for the identification of *H. pylori* because it is characterized by a high intraspecies variability<sup>50</sup>.

Ultimately, MALDI-based identification systems may prove the most cost-effective means of identification dependent only on how comprehensive the databases are<sup>51</sup>.

#### 3.4.4 Nucleic acid amplification tests (NAATs)

PCR is usually considered to be a good method as it is simple, sensitive and specific. The basis for PCR diagnostic applications in microbiology is the detection of infectious

agents and the discrimination of non-pathogenic from pathogenic strains by virtue of specific genes.

This has been used for the rapid detection of *Helicobacter* species in clinical specimens<sup>9,52,53</sup>. It has been used to identify *H. cinaedi* infections but also for screening of carriers<sup>54</sup>.

A PCR-based assay has been developed that enables clarithromycin sensitivity of *H. pylori* to be determined within 1hr, excluding time for template preparation<sup>55</sup>.

This technique has helped facilitate rapid diagnosis and prompt the initiation of the appropriate chemotherapy as well as used for epidemiological studies.

### 3.5 Further identification

#### Rapid molecular methods

Molecular methods have had an enormous impact on the taxonomy of *Helicobacter* and have made identification of many species more rapid and precise than is possible with phenotypic techniques.

A variety of rapid typing methods have been developed for isolates from clinical samples; these include molecular techniques such as Pulsed Field Gel Electrophoresis (PFGE), 16S rRNA gene sequencing, and Polymerase Chain reaction- Restriction Fragment Length Polymorphism Analysis (PCR-RFLP). All of these approaches enable subtyping of unrelated strains, but do so with different accuracy, discriminatory power, and reproducibility.

However, some of these methods remain accessible to reference laboratories only and are difficult to implement for routine bacterial identification in a clinical laboratory.

#### 16S rRNA gene sequencing

A genotypic identification method, 16S rRNA gene sequencing is used for phylogenetic studies and has subsequently been found to be capable of re-classifying bacteria into completely new species, or even genera. It has also been used to describe new species that have never been successfully cultured.

The availability of gene sequencing has revolutionized the taxonomy of the genus *Helicobacter*. This has also been used to identify new species; like *Helicobacter cynogastricus*, *Helicobacter bilis* as well as to emend the description of already existing species and also to re-classify organisms eg the transfer of *Campylobacter pylori* and *Campylobacter mustelae* to the Genus *Helicobacter*<sup>1,18,22</sup>. However, the important pitfalls are that 16sDNA sequences may be too conserved to reveal diversity among species as well as not having the ability to distinguish between closely related species<sup>56</sup>.

#### Polymerase chain reaction- restriction fragment length polymorphism analysis (PCR-RFLP)

This has proved a useful typing technique for a number of groups of organisms, and can be used to identify species within some genera.

This has been used successfully in the differentiation between *H. canadensis* and *H. pullorum* by using restriction enzyme, *Apa*I and has helped facilitate rapid diagnosis and prompt initiation of the appropriate chemotherapy<sup>15</sup>.

### Pulsed field gel electrophoresis (PFGE)

PFGE detects genetic variation between strains using rare-cutting restriction endonucleases, followed by separation of the resulting large genomic fragments on an agarose gel. PFGE is known to be highly discriminatory and a frequently used technique for outbreak investigations and has gained broad application in characterizing epidemiologically related isolates. However, the stability of PFGE may be insufficient for reliable application in long-term epidemiological studies. However, due to its time-consuming nature (30hr or longer to perform) and its requirement for special equipment, PFGE is not used widely outside the reference laboratories<sup>57,58</sup>. The other limitations are that PFGE is labour-intensive, and the results are difficult to analyse and not easily transferable between laboratories<sup>59</sup>.

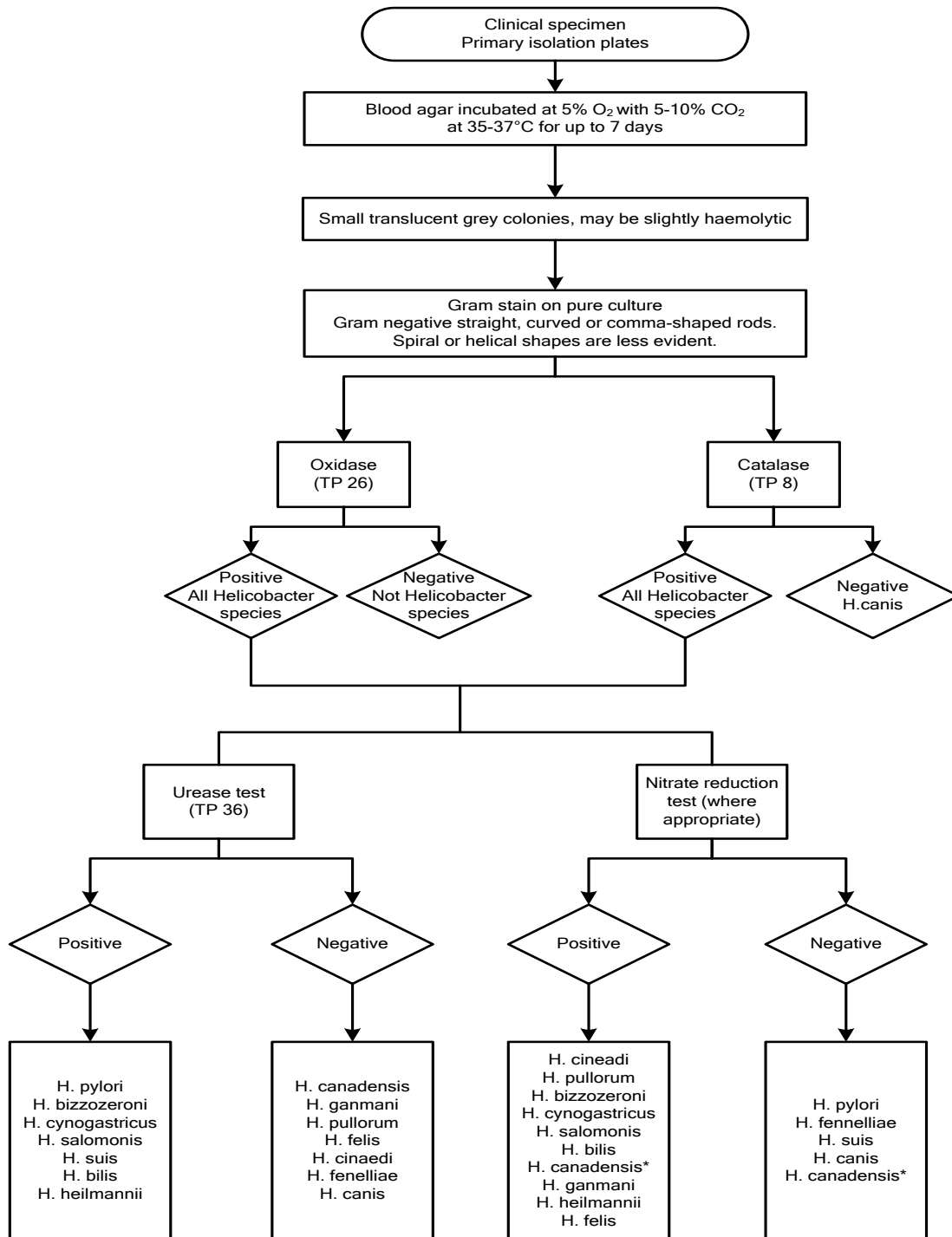
PFGE performed with *NotI* has been used to characterise *Helicobacter pylori* but the main disadvantage of this technique is the low typeability, as up to 40% of isolates may not be susceptible to analysis due to DNA modification/protection against digestion and DNA degradation during the PFGE procedure. However this has been used effectively to several other species of *Helicobacter*, with excellent typeability and discrimination for *H. cinaedi*, *H. hepaticus* and *H. pullorum*<sup>60</sup>.

This has been helpful for understanding the spread of disease between both humans and animals.

### 3.6 Storage and referral

Contact the Reference Laboratory to obtain suitable transport medium for the referral of biopsies and isolates.

## 4 Identification of *Helicobacter* species



\* *H. canadensis* gives variable results

Where clinically indicated refer isolates of suspected *Helicobacter* species to the Reference Laboratory for identification and typing.

If required, contact the Reference Laboratory to obtain suitable transport medium for referral of biopsies and isolates.

The flowchart is for guidance only.

## 5 Reporting

---

### 5.1 Presumptive identification

If appropriate growth characteristics, colonial appearance, Gram stain of the culture, oxidase, catalase, urease, nitrate and nitrite reduction test results (where appropriate) are demonstrated.

### 5.2 Confirmation of identification

Following presumptive identification results and the Reference Laboratory report.

### 5.3 Medical microbiologist

Inform the medical microbiologist of a presumptive or confirmed *Helicobacter* species according to local protocols.

### 5.4 CCDC

Refer to local Memorandum of Understanding.

### 5.5 Public Health England<sup>61</sup>

Refer to current guidelines on CIDSC and COSURV reporting.

### 5.6 Infection prevention and control team

N/A

## 6 Referrals

---

### 6.1 Reference laboratory

Contact appropriate devolved national reference laboratory for information on the tests available, turnaround times, transport procedure and any other requirements for sample submission:

Gastrointestinal Bacteria Reference Unit (GBRU)  
Bacteriology Reference Department  
Public Health England  
61 Colindale Avenue  
London  
NW9 5EQ

Contact PHE's main switchboard: Tel. +44 (0) 20 8200 4400

England and Wales

<https://www.gov.uk/specialist-and-reference-microbiology-laboratory-tests-and-services>

Scotland

<http://www.hps.scot.nhs.uk/reflab/index.aspx>

Northern Ireland

<http://www.belfasttrust.hscni.net/Laboratory-MortuaryServices.htm>

## 7 Notification to PHE<sup>61,62</sup> or equivalent in the devolved administrations<sup>63-66</sup>

---

The Health Protection (Notification) regulations 2010 require diagnostic laboratories to notify Public Health England (PHE) when they identify the causative agents that are listed in Schedule 2 of the Regulations. Notifications must be provided in writing, on paper or electronically, within seven days. Urgent cases should be notified orally and as soon as possible, recommended within 24 hours. These should be followed up by written notification within seven days.

For the purposes of the Notification Regulations, the recipient of laboratory notifications is the local PHE Health Protection Team. If a case has already been notified by a registered medical practitioner, the diagnostic laboratory is still required to notify the case if they identify any evidence of an infection caused by a notifiable causative agent.

Notification under the Health Protection (Notification) Regulations 2010 does not replace voluntary reporting to PHE. The vast majority of NHS laboratories voluntarily report a wide range of laboratory diagnoses of causative agents to PHE and many PHE Health protection Teams have agreements with local laboratories for urgent reporting of some infections. This should continue.

**Note:** The Health Protection Legislation Guidance (2010) includes reporting of Human Immunodeficiency Virus (HIV) & Sexually Transmitted Infections (STIs), Healthcare Associated Infections (HCAs) and Creutzfeldt–Jakob disease (CJD) under ‘Notification Duties of Registered Medical Practitioners’: it is not noted under ‘Notification Duties of Diagnostic Laboratories’.

<https://www.gov.uk/government/organisations/public-health-england/about/our-governance#health-protection-regulations-2010>

Other arrangements exist in [Scotland](#)<sup>63,64</sup>, [Wales](#)<sup>65</sup> and [Northern Ireland](#)<sup>66</sup>.

## References

---

1. Goodwin CS, Armstrong J.A., Chilvers T, Peters M, Collins MD, Sly L, et al. Transfer of *Campylobacter pylori* and *Campylobacter mustelae* to *Helicobacter* gen.nov. as *Helicobacter pylori* comb. nov. and *Helicobacter mustelae* comb.nov., respectively. *International Journal of Systematic Bacteriology* 1989;39:397-405.
2. Dewhirst FE, Shen Z, Scimeca MS, Stokes LN, Boumenna T, Chen T, et al. Discordant 16S and 23S rRNA gene phylogenies for the genus *Helicobacter*: implications for phylogenetic inference and systematics. *J Bacteriol* 2005;187:6106-18.
3. Euzéby, J.P. *Genus Helicobacter*. 2013.
4. Owen RJ. *Helicobacter*--species classification and identification. *Br Med Bull* 1998;54:17-30.
5. O'Rourke JL, Grehan M, Lee A. Non-pylori *Helicobacter* species in humans. *GUT* 2001;49:601-6.
6. Leemann C, Gambillara E, Prod'homme G, Jatton K, Panizzon R, Bille J, et al. First case of bacteremia and multifocal cellulitis due to *Helicobacter canis* in an immunocompetent patient. *J Clin Microbiol* 2006;44:4598-600.
7. Fox JG, Dewhirst FE, Shen Z, Feng Y, Taylor NS, Paster BJ, et al. Hepatic *Helicobacter* species identified in bile and gallbladder tissue from Chileans with chronic cholecystitis. *Gastroenterology* 1998;114:755-63.
8. Jervis AJ, Butler JA, Lawson AJ, Langdon R, Wren BW, Linton D. Characterization of the structurally diverse N-linked glycans of *Campylobacter* species. *J Bacteriol* 2012;194:2355-62.
9. Gonzalez A, Piqueres P, Moreno Y, Canigral I, Owen RJ, Hernandez J, et al. A novel real-time PCR assay for the detection of *Helicobacter pullorum*-like organisms in chicken products. *Int Microbiol* 2008;11:203-8.
10. Ceelen L, Decostere A, Verschraegen G, Ducatelle R, Haesebrouck F. Prevalence of *Helicobacter pullorum* among patients with gastrointestinal disease and clinically healthy persons. *J Clin Microbiol* 2005;43:2984-6.
11. Teare L, Peters T, Saverymuttu S, Owen R, Tiwari I. Antibiotic resistance in *Helicobacter pylori*. *Lancet* 1999;353:242.
12. Advisory Committee on Dangerous Pathogens. The Approved List of Biological Agents. Health and Safety Executive. 2013. p. 1-32
13. Hua JS, Zheng PY, Ho B. Species differentiation and identification in the genus of *Helicobacter*. *World J Gastroenterol* 1999;5:7-9.
14. Stanley J, Linton D, Burnens AP, Dewhirst FE, Owen RJ, Porter A, et al. *Helicobacter canis* sp. nov., a new species from dogs: an integrated study of phenotype and genotype. *J Gen Microbiol* 1993;139:2495-504.
15. Fox JG, Chien CC, Dewhirst FE, Paster BJ, Shen Z, Melito PL, et al. *Helicobacter canadensis* sp. nov. isolated from humans with diarrhea as an example of an emerging pathogen. *J Clin Microbiol* 2000;38:2546-9.
16. Stanley J, Linton D, Burnens AP, Dewhirst FE, On SL, Porter A, et al. *Helicobacter pullorum* sp. nov.-genotype and phenotype of a new species isolated from poultry and from human patients with gastroenteritis. *Microbiology* 1994;140 ( Pt 12):3441-9.



17. Hanninen ML, Happonen I, Saari S, Jalava K. Culture and characteristics of *Helicobacter bizzozeronii*, a new canine gastric *Helicobacter* sp. *Int J Syst Bacteriol* 1996;46:160-6.
18. Van den Bulck K, Decostere A, Baele M, Vandamme P, Mast J, Ducatelle R, et al. *Helicobacter cynogastricus* sp. nov., isolated from the canine gastric mucosa. *Int J Syst Evol Microbiol* 2006;56:1559-64.
19. Jalava K, Kaartinen M, Utriainen M, Happonen I, Hanninen ML. *Helicobacter salomonis* sp. nov., a canine gastric *Helicobacter* sp. related to *Helicobacter felis* and *Helicobacter bizzozeronii*. *Int J Syst Bacteriol* 1997;47:975-82.
20. Baele M, Decostere A, Vandamme P, Ceelen L, Hellemans A, Mast J, et al. Isolation and characterization of *Helicobacter suis* sp. nov. from pig stomachs. *Int J Syst Evol Microbiol* 2008;58:1350-8.
21. Paster BJ, Lee A, Fox JG, Dewhirst FE, Tordoff LA, Fraser GJ, et al. Phylogeny of *Helicobacter felis* sp. nov., *Helicobacter mustelae*, and related bacteria. *Int J Syst Bacteriol* 1991;41:31-8.
22. Fox JG, Yan LL, Dewhirst FE, Paster BJ, Shames B, Murphy JC, et al. *Helicobacter bilis* sp. nov., a novel *Helicobacter* species isolated from bile, livers, and intestines of aged, inbred mice. *J Clin Microbiol* 1995;33:445-54.
23. Smet A, Flahou B, D'Herde K, Vandamme P, Cleenwerck I, Ducatelle R, et al. *Helicobacter heilmannii* sp. nov., isolated from feline gastric mucosa. *Int J Syst Evol Microbiol* 2012;62:299-306.
24. Haesebrouck F, Pasmans F, Flahou B, Chiers K, Baele M, Meyns T, et al. Gastric helicobacters in domestic animals and nonhuman primates and their significance for human health. *Clin Microbiol Rev* 2009;22:202-23, Table.
25. Robertson BR, O'Rourke JL, Vandamme P, On SL, Lee A. *Helicobacter ganmani* sp. nov., a urease-negative anaerobe isolated from the intestines of laboratory mice. *Int J Syst Evol Microbiol* 2001;51:1881-9.
26. Lawson AJ. *Helicobacter*. *Manual of Clinical Microbiology* 10th Edition American Society for Microbiology. 10 ed. 2011.
27. Tolia V, Nilsson HO, Boyer K, Wuerth A, Al-Soud WA, Rabah R, et al. Detection of *Helicobacter ganmani*-like 16S rDNA in pediatric liver tissue. *Helicobacter* 2004;9:460-8.
28. Solnick JV. Clinical significance of *Helicobacter* species other than *Helicobacter pylori*. *Clin Infect Dis* 2003;36:349-54.
29. European Parliament. UK Standards for Microbiology Investigations (SMIs) use the term "CE marked leak proof container" to describe containers bearing the CE marking used for the collection and transport of clinical specimens. The requirements for specimen containers are given in the EU *in vitro* Diagnostic Medical Devices Directive (98/79/EC Annex 1 B 2.1) which states: "The design must allow easy handling and, where necessary, reduce as far as possible contamination of, and leakage from, the device during use and, in the case of specimen receptacles, the risk of contamination of the specimen. The manufacturing processes must be appropriate for these purposes".
30. Official Journal of the European Communities. Directive 98/79/EC of the European Parliament and of the Council of 27 October 1998 on *in vitro* diagnostic medical devices. 7-12-1998. p. 1-37.
31. Health and Safety Executive. Safe use of pneumatic air tube transport systems for pathology specimens. 9/99.
32. Department for transport. Transport of Infectious Substances, 2011 Revision 5. 2011.

33. World Health Organization. Guidance on regulations for the Transport of Infectious Substances 2013-2014. 2012.
34. Home Office. Anti-terrorism, Crime and Security Act. 2001 (as amended).
35. Advisory Committee on Dangerous Pathogens. Infections at work: Controlling the risks. Her Majesty's Stationery Office. 2003.
36. Advisory Committee on Dangerous Pathogens. Biological agents: Managing the risks in laboratories and healthcare premises. Health and Safety Executive. 2005.
37. Advisory Committee on Dangerous Pathogens. Biological Agents: Managing the Risks in Laboratories and Healthcare Premises. Appendix 1.2 Transport of Infectious Substances - Revision. Health and Safety Executive. 2008.
38. Centers for Disease Control and Prevention. Guidelines for Safe Work Practices in Human and Animal Medical Diagnostic Laboratories. MMWR Surveill Summ 2012;61:1-102.
39. Health and Safety Executive. Control of Substances Hazardous to Health Regulations. The Control of Substances Hazardous to Health Regulations 2002. 5th ed. HSE Books; 2002.
40. Health and Safety Executive. Five Steps to Risk Assessment: A Step by Step Guide to a Safer and Healthier Workplace. HSE Books. 2002.
41. Health and Safety Executive. A Guide to Risk Assessment Requirements: Common Provisions in Health and Safety Law. HSE Books. 2002.
42. Health Services Advisory Committee. Safe Working and the Prevention of Infection in Clinical Laboratories and Similar Facilities. HSE Books. 2003.
43. British Standards Institution (BSI). BS EN12469 - Biotechnology - performance criteria for microbiological safety cabinets. 2000.
44. British Standards Institution (BSI). BS 5726:2005 - Microbiological safety cabinets. Information to be supplied by the purchaser and to the vendor and to the installer, and siting and use of cabinets. Recommendations and guidance. 24-3-2005. p. 1-14
45. Matysiak-Budnik T, Briet F, Heyman M, Megraud F. Laboratory-acquired *Helicobacter pylori* infection. Lancet 1995;346:1489-90.
46. Melito PL, Woodward DL, Bernard KA, Price L, Khakhria R, Johnson WM, et al. Differentiation of clinical *Helicobacter pullorum* isolates from related *Helicobacter* and *Campylobacter* species. *Helicobacter* 2000;5:142-7.
47. Fox JG. The non-*H. pylori* helicobacters: their expanding role in gastrointestinal and systemic diseases. *GUT* 2002;50:273-83.
48. Barbuddhe SB, Maier T, Schwarz G, Kostrzewa M, Hof H, Domann E, et al. Rapid identification and typing of listeria species by matrix-assisted laser desorption ionization-time of flight mass spectrometry. *Appl Environ Microbiol* 2008;74:5402-7.
49. Alispahic M, Hummel K, Jandreski-Cvetkovic D, Nobauer K, Razzazi-Fazeli E, Hess M, et al. Species-specific identification and differentiation of *Arcobacter*, *Helicobacter* and *Campylobacter* by full-spectral matrix-associated laser desorption/ionization time of flight mass spectrometry analysis. *J Med Microbiol* 2010;59:295-301.
50. Ilina EN. Direct Matrix-Assisted Laser Desorption-Ionisation (MALDI) Mass-Spectrometry Bacteria Profiling for Identifying and Characterizing Pathogens. *Acta Naturae* 2009;1:115-20.

51. Welker M, Moore ER. Applications of whole-cell matrix-assisted laser-desorption/ionization time-of-flight mass spectrometry in systematic microbiology. *Syst Appl Microbiol* 2011;34:2-11.
52. Moyaert H, Pasmans F, Ducatelle R, Haesebrouck F, Baele M. Evaluation of 16S rRNA gene-based PCR assays for genus-level identification of *Helicobacter* species. *J Clin Microbiol* 2008;46:1867-9.
53. Li C, Ha T, Ferguson DA, Jr., Chi DS, Zhao R, Patel NR, et al. A newly developed PCR assay of *H. pylori* in gastric biopsy, saliva, and feces. Evidence of high prevalence of *H. pylori* in saliva supports oral transmission. *Dig Dis Sci* 1996;41:2142-9.
54. Oyama K, Khan S, Okamoto T, Fujii S, Ono K, Matsunaga T, et al. Identification of and screening for human *Helicobacter cinaedi* infections and carriers via nested PCR. *J Clin Microbiol* 2012;50:3893-900.
55. Gibson JR, Saunders NA, Burke B, Owen RJ. Novel method for rapid determination of clarithromycin sensitivity in *Helicobacter pylori*. *J Clin Microbiol* 1999;37:3746-8.
56. Solnick JV, Vandamme P. Taxonomy of the *Helicobacter* Genus. In: Mobley HLT, Mendz GL, Hazell SL, editors. *Helicobacter pylori: Physiology and Genetics*. Washington (DC): ASM Press; 2001.
57. Liu D. Identification, subtyping and virulence determination of *Listeria monocytogenes*, an important foodborne pathogen. *J Med Microbiol* 2006;55:645-59.
58. Brosch R, Brett M, Catimel B, Luchansky JB, Ojeniyi B, Rocourt J. Genomic fingerprinting of 80 strains from the WHO multicenter international typing study of *Listeria monocytogenes* via pulsed-field gel electrophoresis (PFGE). *Int J Food Microbiol* 1996;32:343-55.
59. Noller AC, McEllistrem MC, Stine OC, Morris JG, Jr., Boxrud DJ, Dixon B, et al. Multilocus sequence typing reveals a lack of diversity among *Escherichia coli* O157:H7 isolates that are distinct by pulsed-field gel electrophoresis. *J Clin Microbiol* 2003;41:675-9.
60. Owen RJ, Taylor DE, Wang G, van Doom LJ. Heterogeneity and subtyping. In: Mobley HLT, Mendz GL, Hazell SL, editors. *Helicobacter pylori: Physiology and Genetics*. Washington (DC): ASM Press; 2001.
61. Public Health England. *Laboratory Reporting to Public Health England: A Guide for Diagnostic Laboratories*. 2013. p. 1-37.
62. Department of Health. *Health Protection Legislation (England) Guidance*. 2010. p. 1-112.
63. Scottish Government. *Public Health (Scotland) Act*. 2008 (as amended).
64. Scottish Government. *Public Health etc. (Scotland) Act 2008. Implementation of Part 2: Notifiable Diseases, Organisms and Health Risk States*. 2009.
65. The Welsh Assembly Government. *Health Protection Legislation (Wales) Guidance*. 2010.
66. Home Office. *Public Health Act (Northern Ireland) 1967 Chapter 36*. 1967 (as amended).