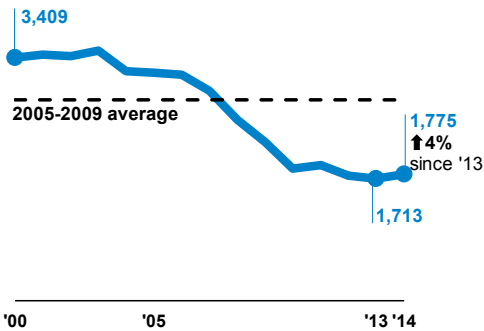




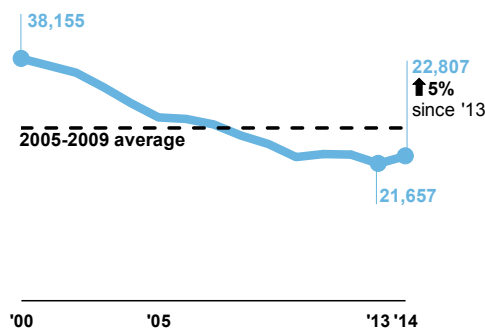
Reported Road Casualties in Great Britain: Main Results 2014



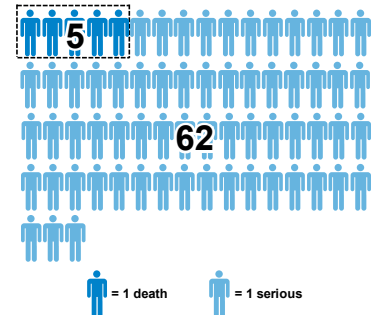
Fatalities



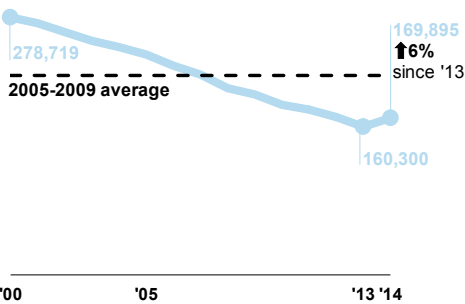
Serious injuries



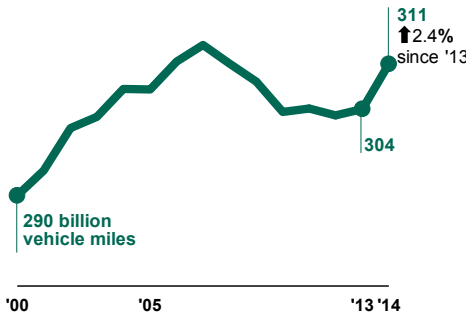
Average per day: 2014



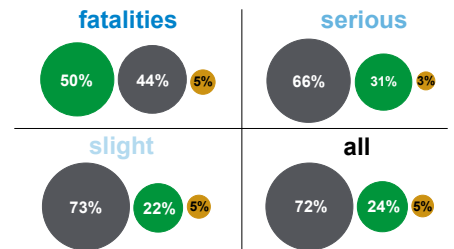
Slight injuries



Motor traffic



Road type



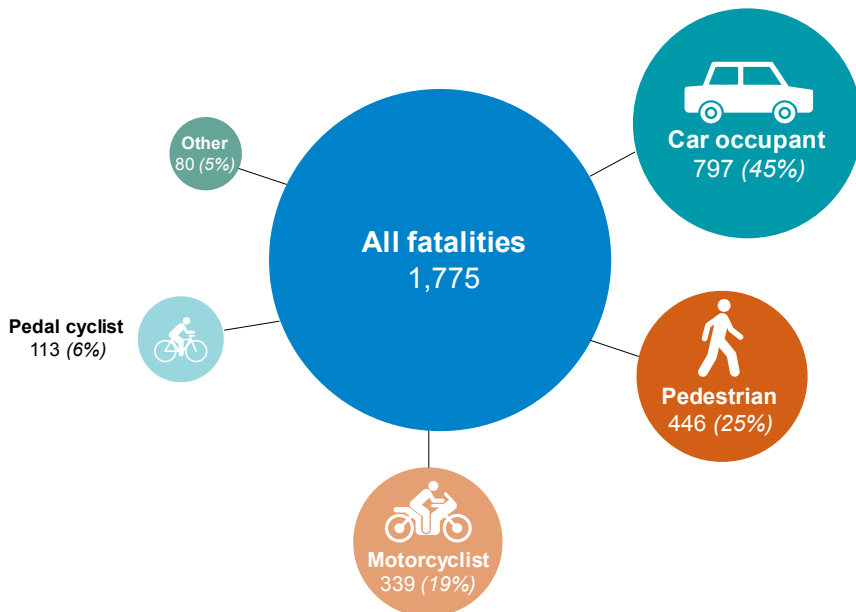
Further information

- [Notes and definitions](#)
- [RAS30: Casualty tables](#)

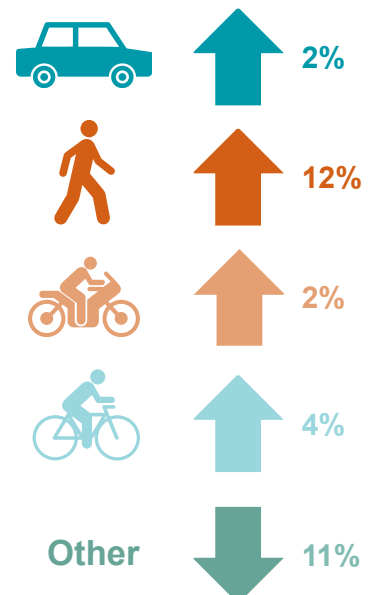
Key

- non built-up: over 40
- built-up: 40 or less
- motorway: excluded from the totals for built-up/non built-up

Fatalities by road user type



2013-2014 % change



*Other consists mainly of goods vehicle and bus and coach occupants