

Communities & Local Government as at 30 June 2010

Irene Lucas
(DCLG121)
**Acting
Permanent Secretary**
(160,000 – 164,999)

Andrew Campbell
(DCLG118)
Acting Director General
Local Government Efficiency,
Finance and Policy
(100,000 – 104,999)

Joe Montgomery
(DCLG095)
Director General
Regions and Communities
(150,000 – 154,999)

Richard McCarthy
(DCLG097)
Director General
Housing &
Planning
(175,000 – 179,999)

David Prout
(DCLG094)
Director General
Communities
(130,000 – 134,999)

David Rossington
(DCLG119)
Acting Director General
Finance and Corporate
Delivery
(120,000 – 124,999)

Shirley Pointer
(DCLG120)
Acting Director General
People Capability
& Change
(135,000 - 139,999)

Richard McCarthy (DCLG097)
Director General
Housing
and Planning
(175,000 - 179,999)

Terrie Alafat (DCLG092)
Director
Housing Growth,
Markets & Strategy
(105,000 - 109,999)

Ruth Stanier (DCLG117)
Acting Director,
Housing Standards
Homelessness &
Support
(75,000 - 79,999)

Andrew Wells (DCLG093)
Director
Planning
(115,000 - 119,999)

John Fiennes (DCLG077)
Director
Sustainability Buildings
& Climate Change
(85,000 - 89,999)

Jeremy Watson (DCLG019)
Director (Part-time)
Chief Scientific
Advisor
(60,000 - 64,999)

Neil McDonald (DCL086)
Director
National Housing &
Planning Advice Unit
(100,00 - 104,999)

Katrine Sporle
Chief planning inspector
NOTE: Katrine features on
the Planning Inspectorate's
Organogram

(DCLG074)
Deputy Director
Housing Growth
Programme

(DCLG043)
Deputy Director
Housing Care
and Support

(DCLG084)
Chief Planner

(DCLG013)
Deputy Director
Economic & Social
Policy

(DCLG037)
Deputy Director
Home Buying & Selling,
Energy Performance

(DCLG046)
Deputy Director
Affordable Housing

(DCLG015)
Deputy Director
Social Housing

(DCLG055)
Deputy Director
Planning Development
Management

(DCLG003)
Deputy Director
Planning
Environment

(DCLG047)
Deputy Director
Sustainable Buildings

(DCLG056)
Deputy Director
Housing Strategy
and
Cross Cutting Policy

(DCLG009)
Deputy Director
Private Sector
Housing

(DCLG025)
Deputy Director
Planning
Delivery & Performance

(DCLG129)
Deputy Director
Planning Major
Infrastructure

(DCLG060)
Deputy Director
Climate Change &
Sustainable
Development

(DCLG010)
Deputy Director
Housing Supply

(DCLG123)
Acting Deputy Director
Repossession and
Homelessness

(DCLG063)
Deputy Director
HCA,
Sponsorship

(DCLG065)
Deputy Director
Local Authority
Housing Finance &
Decent Homes

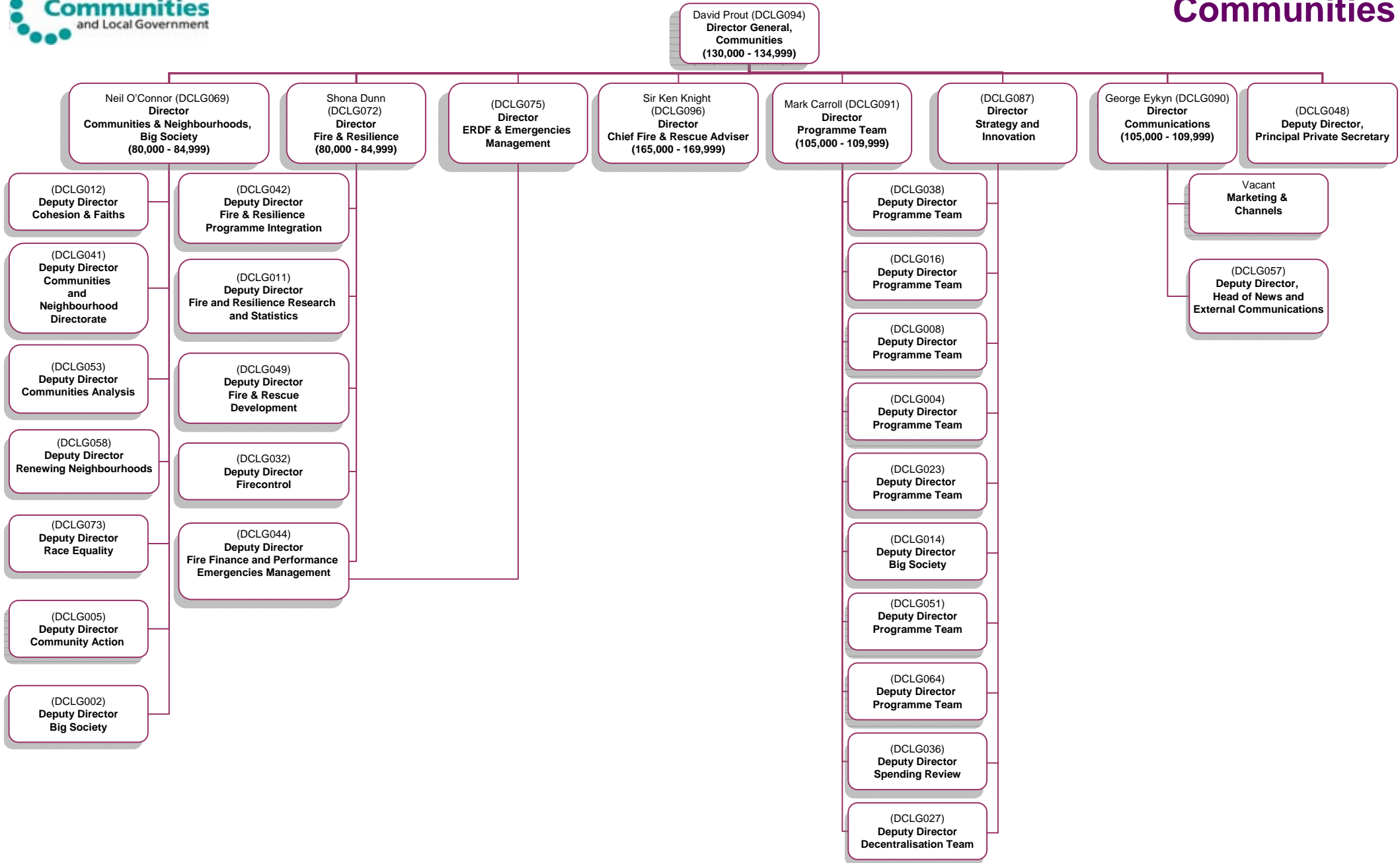
| Deputy Director Reporting Post | AA | AO | EO | HEO | HEO (D) | SEO | GRADE 7 | GRADE 6 | Total |
|--------------------------------|----|------|------|-------|---------|------|---------|---------|-------|
| DCLG010 | | 1 | 2 | 6 | 2 | 1 | 7.16 | 4 | 23.16 |
| DCLG025 | | 1 | 3.5 | 1 | 1 | 4 | 5 | | 15.5 |
| DCLG074 | | 2.67 | 2 | 5 | | 3 | 2 | 1 | 15.67 |
| DCLG056 | | | 3.8 | 4.76 | 2 | | 5.72 | | 16.28 |
| DCLG063 | | 1 | 4.8 | 4.1 | 1 | 2 | 4 | 1 | 17.9 |
| DCLG046 | | 0.8 | 6 | 2.63 | 1 | 5.89 | 4.89 | 2.83 | 24.04 |
| DCLG055 | | 2 | 12.5 | 15.79 | | 16 | 11.64 | 4 | 61.93 |
| DCLG013 | | 0.6 | 3 | 7 | | 4 | 5.6 | 1 | 21.2 |
| DCLG015 | | 1 | 3.67 | 7 | | 1 | 6.59 | | 19.26 |
| DCLG037 | | 1 | 3 | 5 | 3 | 3.6 | 6 | 1 | 22.6 |
| DCLG065 | | | 9.78 | 6 | 1 | 5 | 7.75 | 0.92 | 30.45 |
| DCLG060 | | 1 | | 3 | 1 | | 6.83 | | 11.83 |
| DCLG009 | | 1 | 1.67 | 4.61 | | 3 | 2.8 | | 13.08 |
| DCLG047 | | 2 | 4 | 6 | | 8 | 8 | 1 | 29 |
| DCLG043 | | 0.6 | 3.73 | 4 | | 2.6 | 5 | 1 | 16.93 |
| DCLG003 | | 2 | 3 | 9 | | 3.89 | 4.59 | 1 | 23.48 |
| DCLG084 | | 3 | | 2.64 | | | 4.89 | 1 | 11.53 |
| DCLG123 | | | 1 | 4 | | 4 | 3.78 | 1 | 13.78 |

NOTE

All information taken from DCLG HR database as at end of June 2010.

Staff numbers include permanent DCLG staff, fixed-term staff, and staff on loan / secondment in.

Staff numbers exclude staff on loan / secondment out, career breaks or leave without pay.



| Deputy Director Reporting Post | AA | AO | EO | HEO | HEO (D) | SEO | Grade 7 | Grade 6 | Total |
|--------------------------------|----|------|------|------|---------|-------|---------|---------|-------|
| DCLG053 | | | 2.8 | 3 | 1 | 8.59 | 7.6 | 1 | 23.99 |
| DCLG011 | | 4.61 | 5.94 | 5.79 | | 5 | 4 | | 25.34 |
| DCLG012 | | 2 | 3 | 4 | | 1 | 11.43 | | 21.43 |
| DCLG005 | | 1 | 5 | 7.4 | | 2.47 | 10.38 | 1 | 27.25 |
| DCLG044 | | 2 | 2 | 4 | | | 11 | 2 | 21 |
| DCLG073 | | 2 | 3.8 | 6.77 | | 2 | 4.94 | | 19.51 |
| DCLG042 | | 1.01 | 3 | 4.28 | 1 | 4 | 3 | | 16.29 |
| DCLG041 | | 2 | 2 | 3.89 | 2 | 3 | 9 | 2.4 | 24.29 |
| DCLG057 | | | 5 | 10.8 | | 17.78 | 5 | 4 | 42.58 |
| DCLG048 | | 14 | 18.3 | 13 | 7 | | 6 | | 58.3 |
| DCLG058 | | 3 | 2.7 | 8 | | 1.78 | 5.4 | | 20.88 |
| DCLG032 | | 2 | 7 | 8.09 | 3 | 20 | 17.83 | 3 | 60.92 |
| DCLG049 | | 2.86 | 1 | 8 | | 4 | 6 | 1 | 22.86 |

NOTE

All information taken from DCLG HR database as at end of June 2010.

Staff numbers include permanent DCLG staff, fixed-term staff, and staff on loan / secondment in.

Staff numbers exclude staff on loan / secondment out, career breaks or leave without pay.

Communities Programme Team

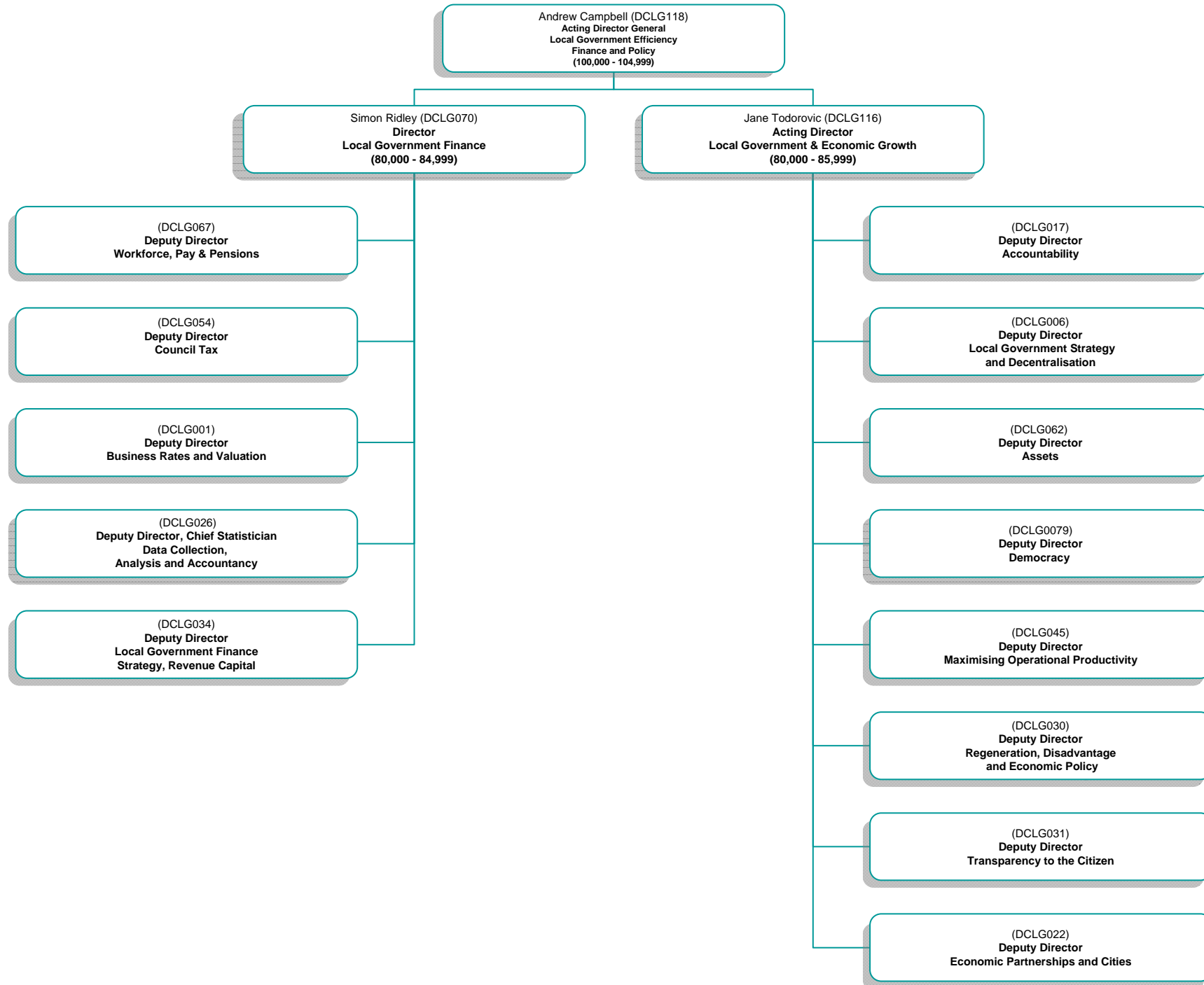
| Deputy Director Reporting Post | AA | AO | EO | HEO | HEO (D) | SEO | Grade 7 | Grade 6 | Total |
|--|----|----|------|------|---------|-----|---------|---------|-------|
| DCLG038 | | | | | | | | | |
| DCLG016 | | | | | | | | | |
| DCLG008 | | | | | | | | | |
| DCLG004 | | | | | | | | | |
| DCLG023 | | | | | | | | | |
| DCLG014 | | | | | | | | | |
| DCLG051 | | | | | | | | | |
| DCLG064 | | | | | | | | | |
| DCLG036 | | | | | | | | | |
| DCLG027 | | | | | | | | | |
| The programme team is a flexible resource. Members of the team work on a variety of projects both within the team and across the Department. For this purpose they have not been assigned to a specific Deputy Director. | 0 | 5 | 3.53 | 15.6 | 3.67 | 14 | 34.77 | 10.92 | 87.49 |

NOTE

All information taken from DCLG HR database as at end of June 2010.

Staff numbers include permanent DCLG staff, fixed-term staff, and staff on loan / secondment in.

Staff numbers exclude staff on loan / secondment out, career breaks or leave without pay.



| Deputy Director Reporting Post | AA | AO | EO | HEO | HEO (D) | SEO | G7 | G6 | Total |
|--------------------------------|------|------|----|------|---------|------|------|----|-------|
| DCLG022 | 0.67 | 1 | 2 | 4 | | | 5.89 | | 13.56 |
| DCLG062 | | 1 | | | | 1 | 2 | | 4 |
| DCLG045 | | 2 | 3 | 5.09 | | 3 | 9.34 | | 22.43 |
| DCLG031 | | | | 1 | | 1 | 0.94 | | 2.94 |
| DCLG006 | | 1 | 2 | 4.6 | 1 | 2.89 | 7 | | 18.49 |
| DCLG026 | | 6.67 | 12 | 9 | 2 | 1 | 7.45 | 1 | 39.12 |
| DCLG017 | | 1 | | 4 | | | 3 | | 8 |
| DCLG001 | | 2 | 2 | 1 | | 1.78 | 3 | 2 | 11.78 |
| DCLG079 | | 1 | 3 | 6.5 | 1 | 3.89 | 6 | 1 | 22.39 |
| DCLG054 | | 1 | 2 | 3 | | 2 | 2.2 | 1 | 11.2 |
| DCLG030 | | | 2 | 3 | | 3 | 6.79 | | 14.79 |
| DCLG067 | | 1 | 4 | 9 | 1 | 1 | 8 | | 24 |
| DCLG034 | | 1 | 6 | 4.6 | 2 | 2.6 | 3.42 | 1 | 20.62 |

NOTE

All information taken from DCLG HR database as at end of June 2010.

Staff numbers include permanent DCLG staff, fixed-term staff, and staff on loan / secondment in.

Staff numbers exclude staff on loan / secondment out, career breaks or leave without pay.

Joe Montgomery (DCLG095)
Director General, Regions and Communities
(150,000 - 154,999)

Philip Cox (DCLG080)
Director,
Olympics, Thames Gateway & Regeneration
(90,000 - 95,000)

Chris Hayes (DCLG114)
Director
London Policy
(95,000 - 99,000)

(DCLG018)
Deputy Director,
Olympic Park Legacy

(DCLG115)
Deputy Director
London Policy

(DCLG007)
Deputy Director,
East London Legacy

(DCLG020)
Deputy Director,
Thames Gateway Strategy

(DCLG021)
Deputy Director,
European Regional Development Fund Delivery,
Strategic Risk and Programme Management

(DCLG082)
Deputy Director,
European Projects and Programmes

Regions and Communities

| Deputy Director Reporting Post | AA | AO | EO | HEO | HEO (D) | SEO | Grade 7 | Grade 6 | Total |
|--------------------------------|----|-----|------|-----|---------|-----|---------|---------|-------|
| DCLG021 | | 0.5 | | 1 | | | 1.7 | 1 | 4.2 |
| DCLG020 | | 0.5 | | | 1 | | 1.92 | | 3.42 |
| DCLG007 | | 0.5 | | | | | 1 | 1 | 2.5 |
| DCLG018 | | 0.5 | 1.14 | 1 | | | 2 | | 4.64 |
| DCLG082 | | | 1 | 5 | | 4 | 5.92 | 2 | 17.92 |

NOTE

All information taken from DCLG HR database as at end of June 2010.

Staff numbers include permanent DCLG staff, fixed-term staff, and staff on loan / secondment in.

Staff numbers exclude staff on loan / secondment out, career breaks or leave without pay.

David Rossington (DCLG119)
Acting Director General
Finance and Corporate Services
(120,000 - 124,999)

Stephen Park (DCLG126)
(Senior Interim)
Finance Director
(N/A)

Grant Fitzner (DCLG081)
Director
Analytical Services
(90,000 - 94,999)

(CLG050)
Deputy Director
Knowledge
Management

(DCLG068)
Deputy Director
Property Asset
Management

Susanna McGibbon (DCLG085)
Director
Legal
(95,000 - 99,999)

Chris Buxton (DCLG127)
Director (Interim)
Internal Audit
(N/A)

(DCLG128)
Deputy Director
(Interim)
IT
(N/A)

(DCLG052)
Deputy Director
Finance Business
Partners Planning
& Reporting

(DCLG076)
Deputy Director,
Finance

(DCLG083)
Deputy Director,
Corporate
Procurement

(DCLG035)
Deputy Director
Housing Analysis and
Surveys

(DCLG033)
Deputy Director
Housing, Markets
& Planning Analysis

(DCLG124)
Acting Deputy Director
Economic Development,
Decentralisation
and
Neighbourhoods Analysis

(DCLG040)
Deputy Director
Geographic &
Statistical Evidence

(DCLG122)
Acting Deputy
Director

(DCLG078)
Deputy Director
Regeneration

(DCLG039)
Deputy Director
Housing & Land

(DCLG071)
Deputy Director
Legal, Local Government

(DCLG088)
Deputy Director
Employment
Commercial &
Specialist Drafting

(DCLG066)
Deputy Director
Constitutional &
European Law

(DCLG029)
Deputy Director
Legal

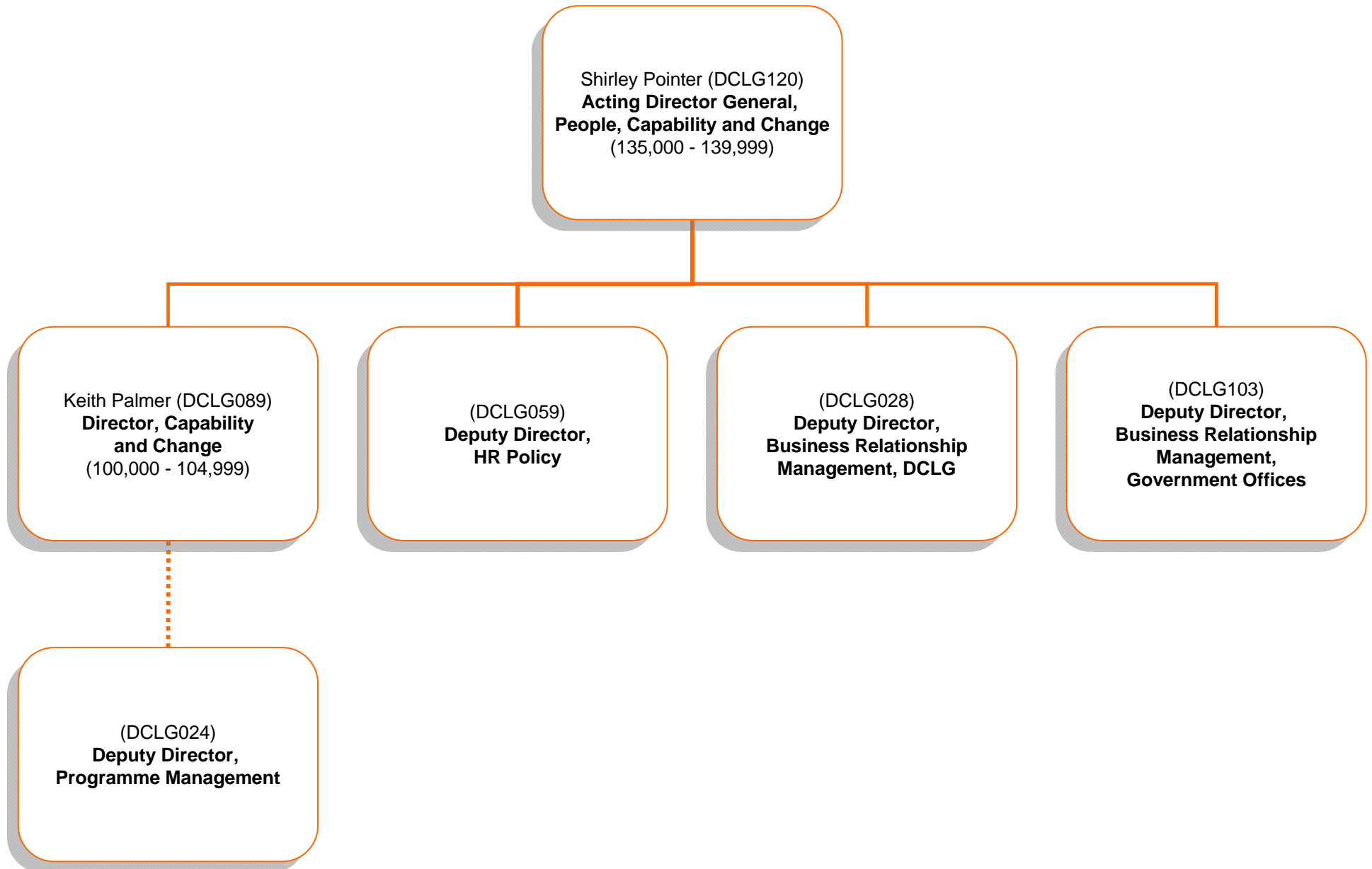
| Deputy Director Reporting Post | AA | AO | EO | HEO | HEO (D) | SEO | GRADE 7 | GRADE 6 | Total |
|--------------------------------|----|-------|-------|-------|---------|-------|---------|---------|--------|
| DCLG083 | | | 1.89 | 4.68 | | 5.75 | 7 | 3 | 22.32 |
| DCLG068 | | 1 | 5 | 8 | | 9 | 5 | 3 | 31 |
| DCLG066 | | | | | | | 1.6 | 2.81 | 4.41 |
| DCLG078 | | 1 | | 1 | | | 3.2 | 3 | 8.2 |
| DCLG052 | | | 4 | 13.59 | 1 | 11.8 | 15.6 | 5 | 50.99 |
| DCLG040 | | 4.54 | 4 | 4 | | 4 | 5 | 3 | 24.54 |
| DCLG050 | 1 | 15.05 | 15.02 | 6.81 | | 3 | 2 | 3 | 45.88 |
| DCLG124 | | 1 | | 1 | 2.6 | 4.83 | 10.5 | 2 | 21.93 |
| DCLG088 | | 1 | | | | | 2.78 | 5.25 | 9.03 |
| DCLG039 | | | | | | 1 | 1.5 | 3.29 | 5.79 |
| DCLG029 | | 1 | | 1 | | 1 | 4.39 | 3.72 | 11.11 |
| DCLG035 | | 1 | 2 | 3 | 1 | 1.6 | 8.49 | 2 | 19.09 |
| DCLG071 | | | | 1 | | 1 | 2.89 | 5.18 | 10.07 |
| DCLG033 | | 2 | | 3 | 3 | | 8 | 4 | 20 |
| DCLG122 | | 1 | 2 | 2 | 1 | | 5 | 2 | 13 |
| DCLG076 | | 16.36 | 30.27 | 33.12 | | 16.63 | 4 | 1 | 101.38 |
| DCLG128 | | 3 | 3 | 6 | | 3 | 5 | 1 | 21 |

NOTE

All information taken from DCLG HR database as at end of June 2010.

Staff numbers include permanent DCLG staff, fixed-term staff, and staff on loan / secondment in.

Staff numbers exclude staff on loan / secondment out, career breaks or leave without pay.



| Deputy Director Reporting Post | AA | AO | EO | HEO | HEO (D) | SEO | GRADE 7 | GRADE 6 | Total |
|--------------------------------|----|----|----|-----|---------|-----|---------|---------|-------|
| DCLG024 | | | 3 | 3 | | | 4.6 | | 10.6 |
| DCLG059 | | 3 | 4 | 1 | | 4 | 4 | 1 | 17 |
| DCLG028 | | | | 9 | 1 | | 7 | 1 | 18 |
| DCLG103 | | | | | | | 2 | | 2 |

NOTE

All information taken from DCLG HR database as at end of June 2010.

Staff numbers include permanent DCLG staff, fixed-term staff, and staff on loan / secondment in.

Staff numbers exclude staff on loan / secondment out, career breaks or leave without pay.