



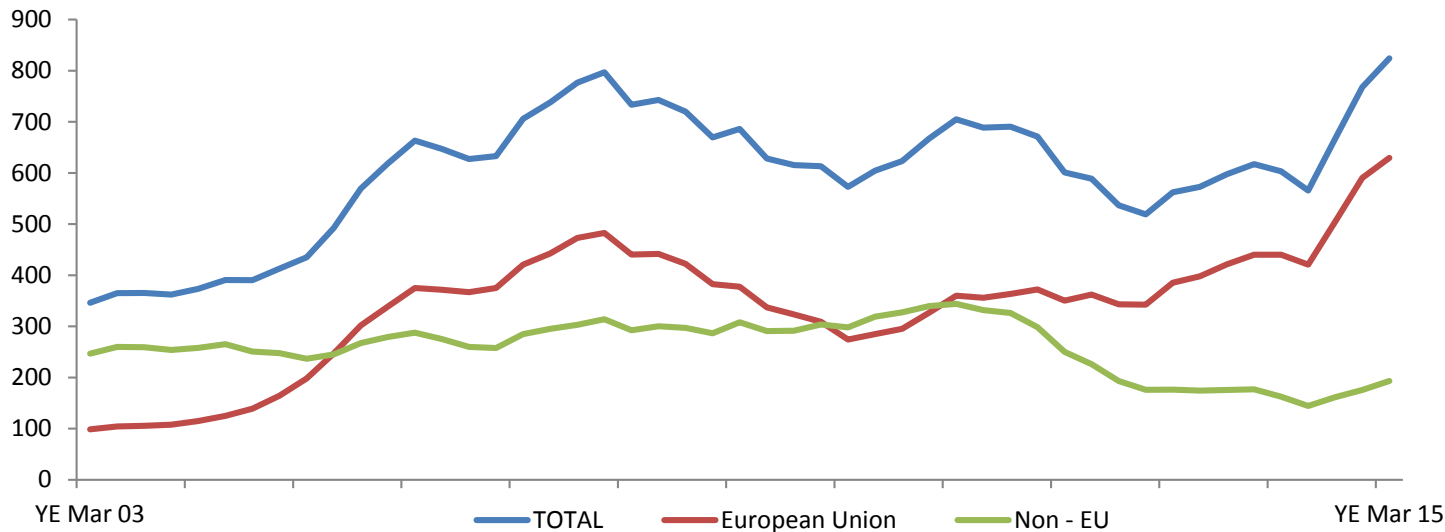
**This report provides statistics regarding National Insurance Numbers (NINo) allocated to adult overseas nationals entering the United Kingdom (UK). A NINo is generally required by any overseas national looking to work or claim benefits / tax credits in the UK, including the self employed or students working part time**

The figures are based on recorded registration date on the HMRC National Insurance Recording and Pay as you Earn System, i.e. after the NINo application process has been completed. **This may be a number of weeks or months (or in some cases years) after arriving in the UK**

**Headline Figures:**

- The total number of NINo registrations to adult overseas nationals in the 12 months to March 2015 was 824 thousand, an increase of 221 thousand (37%) on the previous year.
- Within the European Union (EU) - The number of NINo registrations from EU nationals in the 12 months to March 2015 was 629 thousand, an increase of 189 thousand (43%) on the previous year.

**NINo Registrations by world area (thousands)**



21<sup>st</sup> May 2015

Coverage: UK  
Theme: [Migration](#)

**Issued by:**  
Information Exploitation Directorate  
Department for Work and Pensions

Press Office: 0203 267 5160  
Website:  
<http://www.gov.uk/dwp>

**Statistician:**

Steve Watkins  
Telephone: 01142098387  
Email:  
[steven.watkins@dwp.gsi.gov.uk](mailto:steven.watkins@dwp.gsi.gov.uk)

**Next release of NINo registration data:**  
27<sup>th</sup> August 2015

**Contents**

Introduction	2
World Areas	3
Location	4
Notes	5



## Introduction

This summary contains statistics on National Insurance Numbers (NINo) allocated to adult overseas nationals entering the United Kingdom (UK), covering the period from January 2002 to March 2015.

The NINo statistics show the number of people registering for a NINo in order to work or to claim benefits / tax credits and are one of a number of supplementary measures produced by Government of in-migration to the UK.

They are a measure of flow including both short-term and long-term migrants and include foreign nationals who have already been in the country but not previously required a NINo as well as migrants who may have subsequently returned abroad.

The statistics are published as part of the scheduled timetable for the release of cross-Government migration statistics. The [Migration Statistics Quarterly Report \(MSQR\)](#) is a summary of the quarterly releases of official international migration statistics.

## Definition of World Area

For reporting purposes, countries have been grouped into ‘world areas’ based primarily on geographical location. These have been aligned to the new country groupings which ONS consulted on in 2014. Countries are grouped according to current world area status for the entire back series.

World Area	Sub Group
European Union	European Union EU15, European Union EU8, European Union EU2, European Union Other
Non-European Union (Other Europe)	Other Europe
Asia	Middle East and Central Asia, East Asia, South Asia, South East Asia
Rest of the World	Sub-Saharan Africa, North Africa, Central and South America, Oceania

## Future releases

The next release will be on the 27<sup>th</sup> August 2015 and contain data on registrations to June 2015.

This release will also include updated annual statistics on the: Nationality at point of National Insurance number registration of DWP working age benefit claimants (February 2015)

[Previous publication](#)

## Additional Information

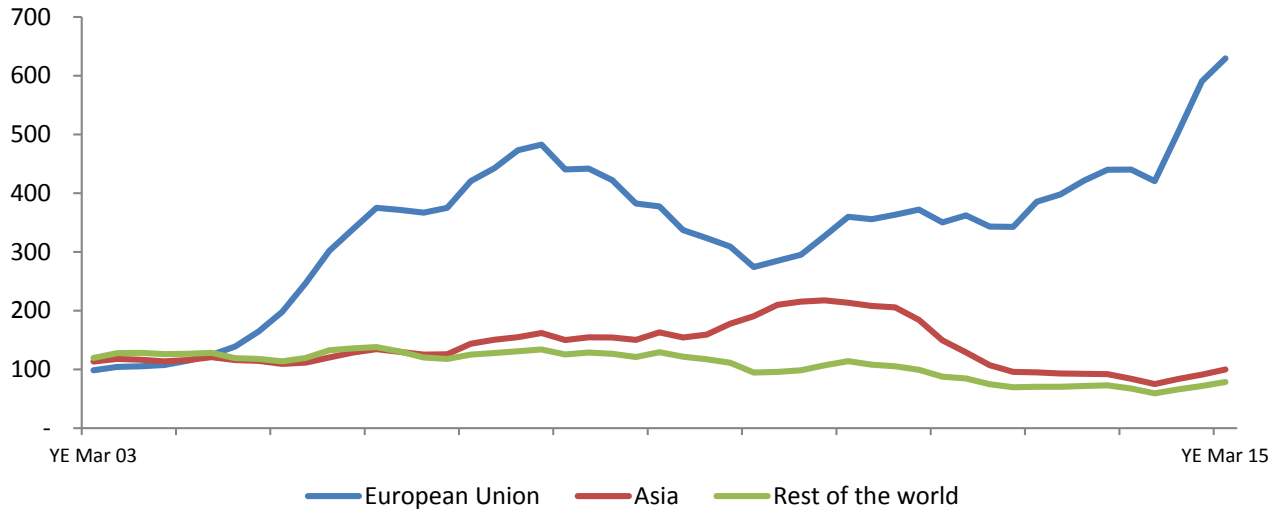
All the information underlying the charts and tables can be found in the accompanying excel tables. More detailed breakdowns on age / gender and geographical information including parliamentary constituency and Middle super out put area can be obtained using [Stat-Xplore](#)

Headline NINo registrations at Local Authority level are also available as [interactive maps](#)

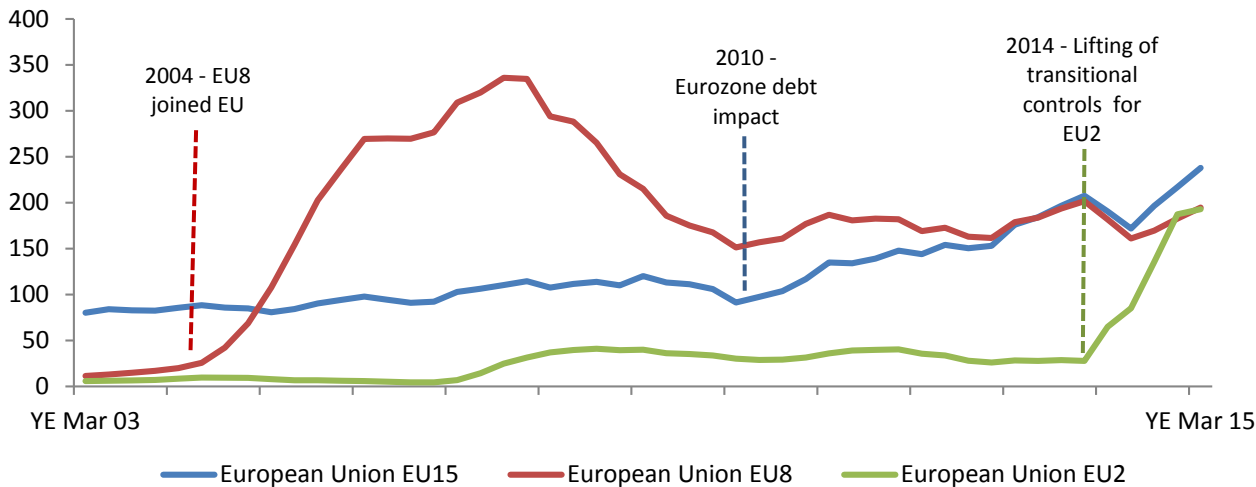


## National Insurance Number Allocations to Adult Overseas Nationals: Quarterly Report-Registrations to March 2015

### NINo Registrations by world area (thousands)



### NINo Registrations to EU nationals (thousands)



- **824 thousand** NINo registrations in the year to March 2015, an increase of **221 thousand (37%)** on the previous year.
- **76%** were from within the European Union.
- The highest annual total since the reporting period began (2002).
- Within the European Union (EU) the number of NINo registrations in the year was **629 thousand**, an increase of **189 thousand (43%)** on the previous year.
- The number of NINo registrations from EU2 nationals (Bulgaria and Romania) was **193 thousand**, an increase of **130 thousand (197%)** on the previous year.
- Outside of the EU the number of NINo registrations was **193 thousand**, an increase of **30 thousand (19%)** on the previous year

#### Top 5 nationalities – all world areas :

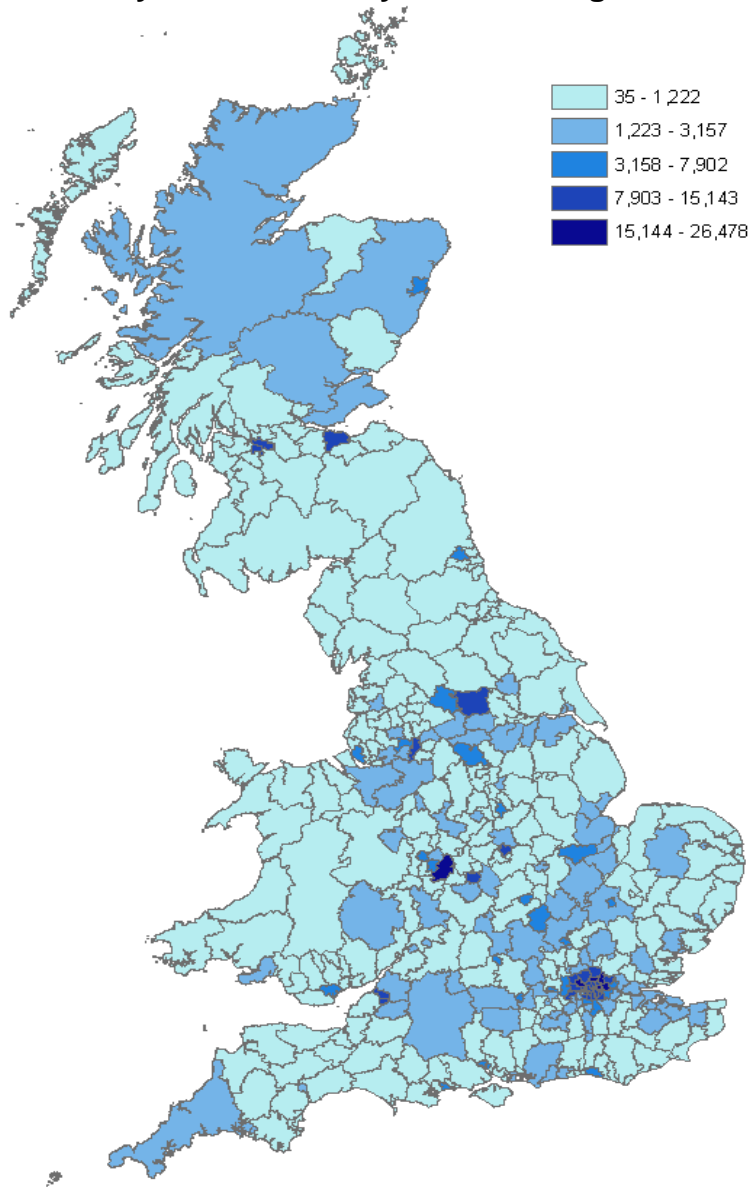
Nationality	Registrations Yr to March 2015	Change from previous year
Romania	152,360	223%
Poland	115,610	13%
Italy	57,640	37%
Spain	54,200	19%
Bulgaria	40,580	128%

See Excel tables or [Stat-Xplore](#) for full data



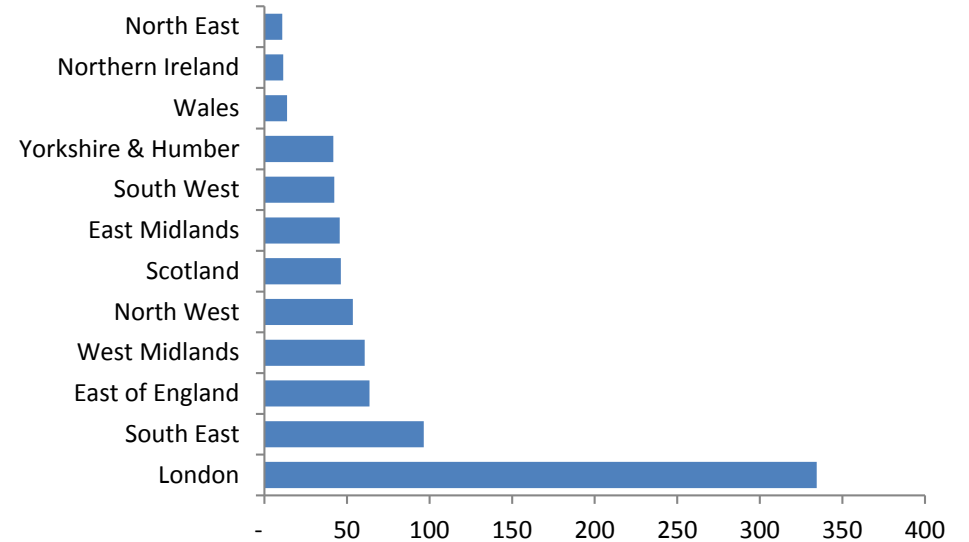
# National Insurance Number Allocations to Adult Overseas Nationals: Quarterly Report-Registrations to March 2015

## NINo registrations by Local Authority at time of registration



Click [here](#) for interactive version

## NINo registrations (thousands), Year to March 2015 by region.



- **41%** of all NINo registrations were in the London region.
- **1%** were in the North East.

Local Authority	Registrations – Yr to March 2015
Newham	26,480
Brent	25,130
Tower Hamlets	18,880
Birmingham	18,240
Haringey	17,550
Waltham Forest	17,260
Ealing	15,140
Barnet	14,410
Manchester	14,090
Westminster	13,380



### Source

DWP receive a quarterly cumulative scan from HMRC's National Insurance Recording and Pay as you Earn System (NPS) which contains details of all adult overseas nationals allocated a NINo. This is used to produce these National Statistics.

The registration date referred to in this report represents the date the information on the individual was processed on HM Revenue and Customs' National Insurance Recording and Pay as you Earn System (NPS) i.e. after the NINo application and allocation process has been completed. This may be a number of weeks or months after arriving in the UK. The registration series is not subject to any future change.

### Data Quality

A change to the process of recording NINOs during the quarter April-June 2014, means that the volume of NINo registrations recorded were lower in that quarter and then higher in the subsequent quarter July to September 2014 than would otherwise be the case. Therefore, comparisons of NINo registrations over time for the latest quarterly periods should be viewed with caution, the impact on annual figures is negligible.

### Coverage

The DWP NINo data covers people allocated a NINo for all types of work – including the self-employed and students working part-time – and whatever the length of stay in the UK. It also covers adult overseas nationals allocated a NINo to claim benefits or tax credits. The data is a 100% sample held at the individual level.

The DWP NINo data does not show when overseas nationals subsequently depart the UK, nor does it show length of stay in the UK. The DWP figures are therefore a measure of inflow of overseas nationals registering for a NINo. It does not measure outflow or overall stock of overseas nationals in the UK.

The NINo statistics are not directly comparable to the LFS employment estimates which indicate the stock of people working in the UK, nor do they necessarily align well with ONS long-term estimates of immigration since the NINo statistics will include both short-term as well as long-term (1 year+) flows as well as migrants who may have subsequently returned abroad.

The figures reflect adult overseas nationals allocated a NINo through the adult registration process. In addition there will be a small number of overseas nationals (aged 16-19 yrs) allocated a NINo automatically through the Juvenile Registration scheme. This occurs when the individual has previously been allocated a child registration number. These juvenile cases are not captured by the statistics.

### Other statistics on migration

The [Migration Statistics Quarterly Report \(MSQR\)](#) provides a comprehensive picture of the various sources of migration statistics available and analysis of trends and includes headline NINo statistics.



## Users of the statistics

Our users can be categorised as being from the following groups:

### **Government policy making and policy monitoring:**

- a. Ministers
- b. Department for Work & Pensions (DWP) officials, e.g. policy makers and performance managers
- c. Parliament
- d. Jobcentre Plus staff

### **Local Authorities and other public sector bodies**

### **Academic Research**

### **Others:**

- a. Media and commentators
- b. The general public

## User feedback and contact points

DWP have recently updated the content and structure of this publication, the aim of this was to make the publication as user-friendly as possible.

If you have any comments or suggestions regarding this publication, please contact DWP via [stats-consultation@dwp.gsi.gov.uk](mailto:stats-consultation@dwp.gsi.gov.uk).

We would be interested in hearing about what you use these statistics for and how well they meet your requirements.

If you would like to receive occasional e-mails from DWP to directly inform you of documents seeking the views of users, please email [general.statistics@dwp.gsi.gov.uk](mailto:general.statistics@dwp.gsi.gov.uk) giving details of the DWP publications you use.

**Press enquiries** should be directed to the Department for Work and Pensions Press Office: 0203 267 5129 (Out of hours: 0203 267 5144)

**Other enquiries** about these statistics should be directed to: [steven.watkins@dwp.gsi.gov.uk](mailto:steven.watkins@dwp.gsi.gov.uk)

Information Exploitation (IE) Directorate, Department for Work and Pensions

Published on 21 May 2015. Next release on 27 August 2015.