

NATURAL
ENGLAND

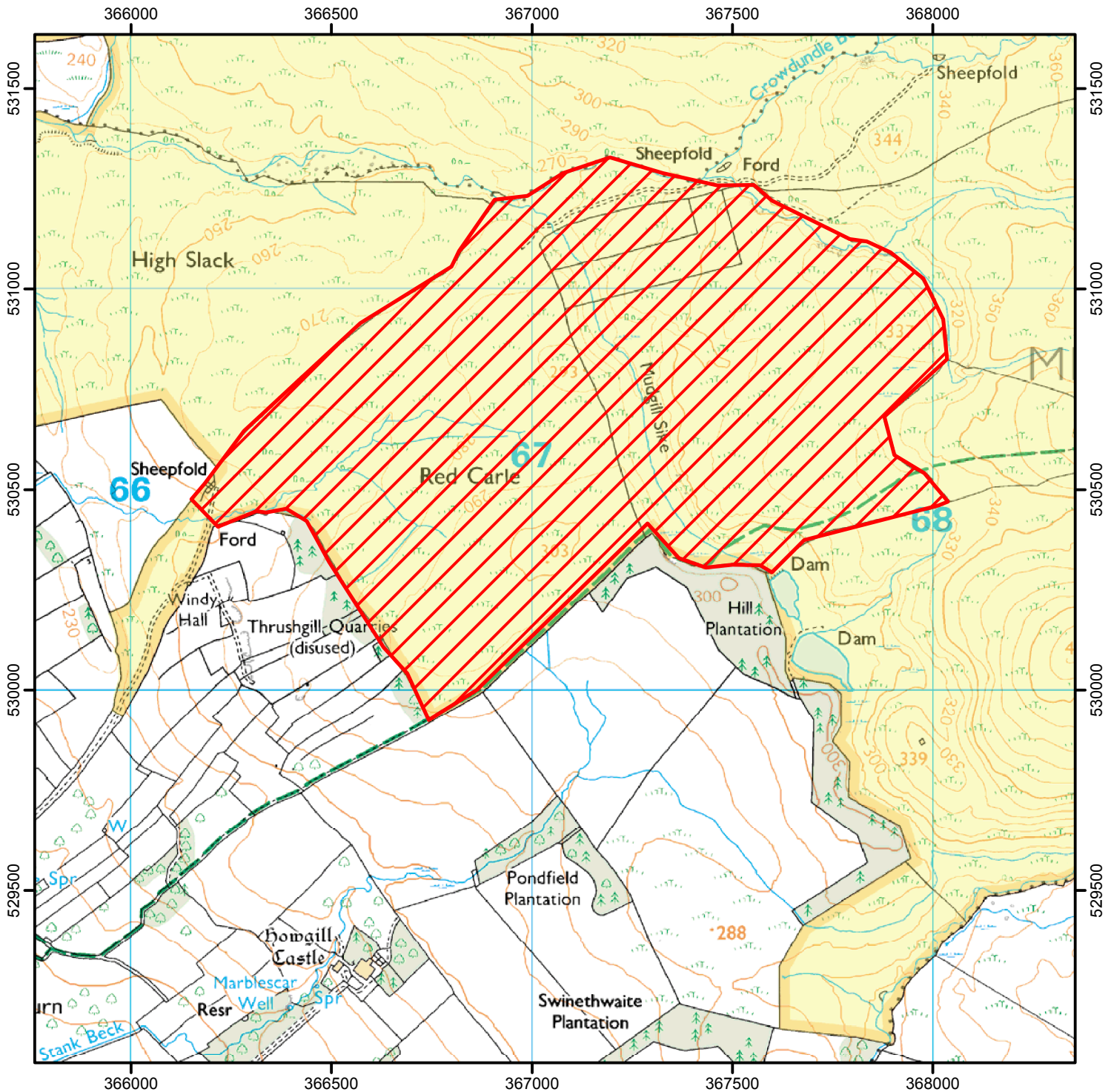
NO DOGS

To protect sensitive wildlife, dogs are not allowed on the open access land shown hatched on the map below.

This does not affect Public Rights of Way where dogs must be kept under effective control.


Between: October 1st and March 31st each year (until 2021)

Case Number: 2005100020



0 250 500 1,000
Metres

© Crown Copyright and database right 2015.
Ordnance Survey 100022021

 Restricted Open Access Land

 Open Access Land



For more information call the Open Access Contact Centre on 0300 060 2091
or visit our website at www.gov.uk/right-of-way-open-access-land/use-your-right-to-roam