



Apprenticeship qualification success rates 2013/2014

Producing the dataset and data definitions

Date of issue 09 December 2014

Contents

Section 1 – Introduction	2
Purpose of document	2
Purpose of qualification success rates	2
Apprenticeship qualification success-rate methodology	2
Apprenticeship business rules	3
Exclusions from Apprenticeship qualification success rates	3
Section 2 – Processing standard files	5
Process flow diagram	5
Identifying Apprenticeship programme aims	6
Processing further-education college mergers	6
Processing learner reference number changes	7
Merging programme aims across years	7
Qualification success-rate calculations	8
Further Information	9
Section 3 – Contents of the qualification success-rates dataset for records created from the ILR	10
Source or derivation of fields in the qualification success-rates dataset	10
Section 4 – Contents of the qualification success-rates dataset for records created from the LEOP dataset	17
Source or derivation of fields in the qualification success-rates dataset	17
Section 5 – Contents of the LEOP dataset	23
Data items contained in the LEOP dataset	23
Changes from the 2012/2013 document	24
Changes made from version 1.3 (published 05 September 2014)	25
Changes made from version 1.4 (published 21 October 2014)	26

Skills Funding Agency

Cheylesmore House, Quinton Road, Coventry, CV1 2WT
T 0845 377 5000 www.skillsfundingagency.bis.gov.uk

A partner organisation of the Department for Business, Innovation & Skills

Section 1 – Introduction

Purpose of document

1. This document provides technical information about how information provided in Individualised Learner Records and Large Employer Outcome Pilot records is processed to produce the qualification success-rates dataset which the Apprenticeship 2013/2014 qualification success-rate and minimum-standards reports are produced from. This document also provides information about where the information included in the qualification success-rate and minimum-standards reports comes from.

Purpose of qualification success rates

2. The Apprenticeship qualification success rate is a measure of the quality of the Apprenticeship programmes that a provider ran in a particular academic year. Qualification success rates are used to identify provision that falls below the minimum quality standards. Provision which falls below the minimum quality standards is one of the factors, as identified in the document 'New Challenges, New Chances' (at www.gov.uk/government/uploads/system/uploads/attachment_data/file/145449/11-1213-new-challenges-new-chances-implementing-further-education-reform.pdf), that will prompt us to take action under our Approach to Intervention process (at www.gov.uk/government/uploads/system/uploads/attachment_data/file/280862/Intervention_Statement.pdf).
3. Qualification success rates are used in FE Choices and National Success Rate Tables to show apprentices and employers the relative quality of provision. The Office for Standards in Education, Children's Services and Skills (Ofsted) also use them as part of their inspection process.

Apprenticeship qualification success-rate methodology

4. The Apprenticeship qualification success-rate methodology has two qualification success-rate measures – the 'overall' qualification success rate and the 'timely' qualification success rate.
5. We use the overall qualification success rate to formally assess whether a provider meets minimum quality standards.
6. The overall qualification success rate is based on the hybrid end year (the actual end year or the planned end year of an Apprenticeship framework, whichever is later). The Apprenticeship frameworks considered for the 2013/2014 overall qualification success rate are those that were either ended or were planned to end in the academic year ending 31 July 2014.
7. The timely qualification success rate is based on the planned end year of an Apprenticeship framework. The Apprenticeship frameworks considered for the 2013/2014 timely qualification success-rate measure are those with a planned end date up to 31 July 2014. In the timely qualification success-rate measure an Apprenticeship framework is counted as achieved if the achievement date is:
 - on or before the planned end date; or
 - no more than 90 days after it.
8. There can be a delay between an Apprenticeship framework being completed and the notification that the Apprenticeship framework has been achieved. To make sure that all achievements that count towards the timely success rate are included, information from return R04 of the 2014/2015 Individualised Learner Record (ILR) is used to identify

frameworks that have been achieved no more than 90 days after their planned end date but which could not be recorded in the final return of the 2013/2014 ILR.

Apprenticeship business rules

9. We produce the qualification success-rate business rules (at www.gov.uk/government/uploads/system/uploads/attachment_data/file/299574/qualification_success_rates_business_rules_13_14.pdf) that describe how the qualification success rates will be calculated, and which Apprenticeship frameworks will not be included in the qualification success-rate calculations.
10. A number of Apprenticeship frameworks are not included when calculating the qualification success rates in order to make the results more credible and appropriate. The main reasons for not including a particular Apprenticeship framework are that it:
 - would not be fair to the provider (for example, if qualification success rates would be affected by circumstances beyond the provider's control);
 - is not funded by us or the Education Funding Agency; or
 - relates to an Access to Apprenticeship framework and the learner is not employed.

Exclusions from Apprenticeship qualification success rates

11. The report pack for the qualification success-rate reports includes a file containing the data used in the overall and timely qualification success-rate calculations. This data file only contains programme aims that are used to calculate the qualification success rates.
12. The way that the Apprenticeship frameworks that are not included in the calculations (excluded frameworks) are identified is described below.

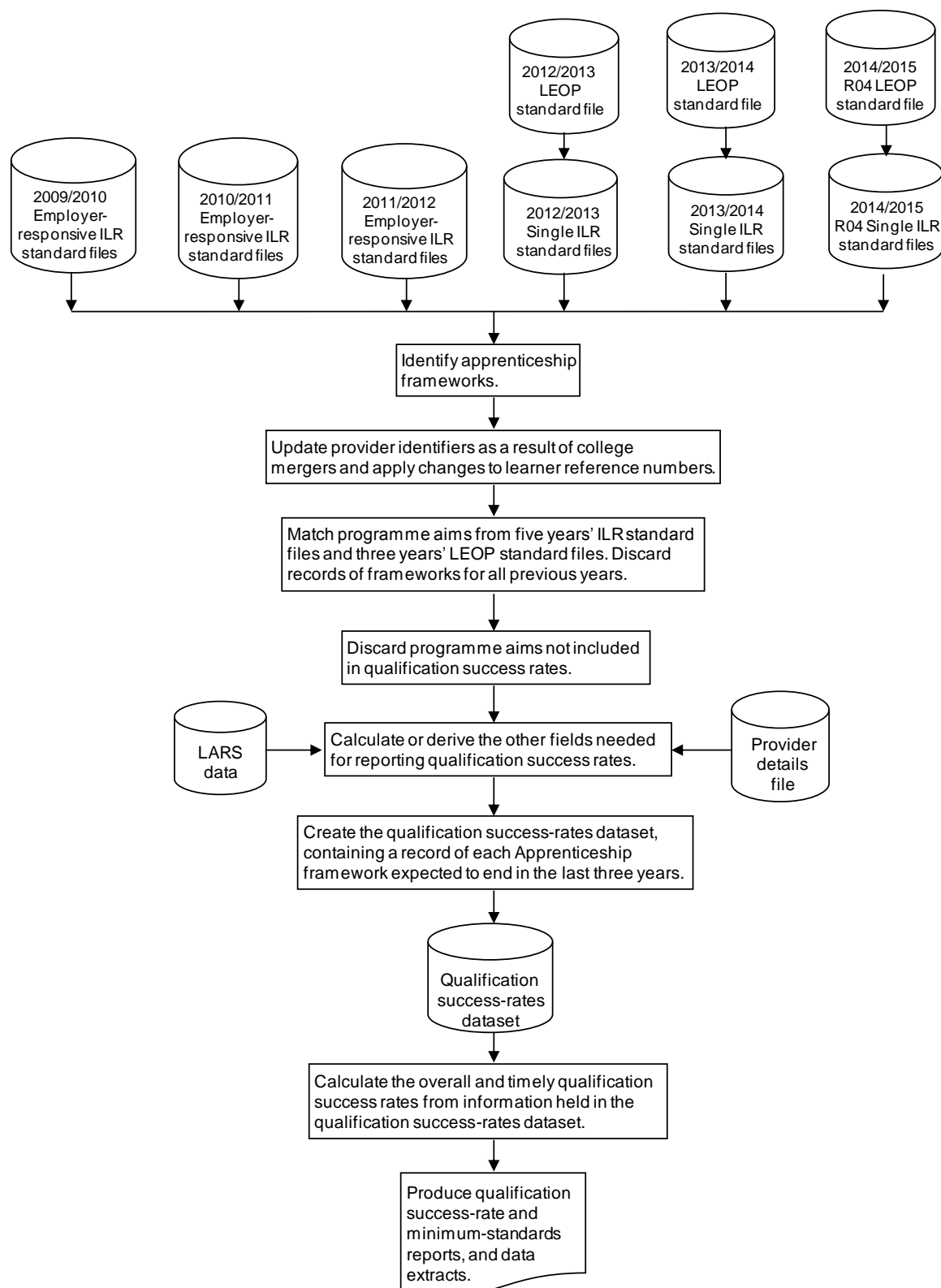
Type of excluded framework	Rules for identifying the excluded framework
Frameworks where an apprentice has transferred to a new provider because of intervention from us or the Education Funding Agency	Programme aims where P_ProgStatus is 10.
For the overall qualification success rate, frameworks where the apprentice has transferred to a different programme with the same provider	Programme aims where P_ProgStatus is 7 or 8 and the Learning Actual End Date (A31) is before 1st August of the relevant year.
For the timely qualification success rate, frameworks where the apprentice has transferred to a different programme with the same provider before the planned end date or no more than 90 days after it	Programme aims where P_ProgStatus is 7 or 8 and the Learning Actual End Date (A31) is on or before the Learning Planned End Date (A28), or no more than 90 days after it.
For the overall qualification success rate, frameworks where the apprentice has temporarily withdrawn from the framework due to an agreed break in learning	Programme aims where P_ProgStatus is 11 or 12.
For the timely qualification success rate, frameworks where the apprentice has temporarily withdrawn from the framework due to an agreed break in learning before the planned end date or no more than 90 days after it	Programme aims where (P_ProgStatus) is 11 or 12 and the Learning Actual End Date (A31) is on or before the Learning Planned End Date (A28) or no more than 90 days after it.
Learning aims where the learner has withdrawn from the framework within the funding qualifying period, and the	Programme aims where: <ul style="list-style-type: none"> • the planned duration is 168 days or more; • the actual duration is less than 42 days; and

Type of excluded framework	Rules for identifying the excluded framework
learning aim is not achieved.	<ul style="list-style-type: none"> • the Completion Status (A34) is 3 (withdrawal). Programme aims where: <ul style="list-style-type: none"> • the planned duration is between 14 and 167 days; • the actual duration is less than 14 days; and • the Completion Status (A34) is 3 (withdrawal). The planned duration of the aim, in days, is the difference between the Learning Start Date (A27) and the Learning Planned End Date (A28). The actual duration of the aim, in days, is the difference between the Learning Start Date (A27) and the Learning Actual End Date (A31).
Frameworks with a planned end date after the last day of the QSR reporting period (31st July 2014)	Programme aims where the Learning Planned End Date (A28) is later than 31 July 2014.
Duplicate framework records for the years before 2010/2011. (Duplicate frameworks have the same provider, apprentice, programme type and framework code.)	The duplicate programme aims are identified by matching the Provider Number (L01), Learner Reference Number (L03), Programme Type (A15) and Framework Code (A26) for aims where the Completion Status is 1, 2, 3 or 5. The programme aims are sorted into descending order using Learning Aim Data Set Sequence (A05) and only the aim with the highest value is included in the qualification success-rate dataset.
Learners who are on an Access to Apprenticeship scheme but are not employed	For ILR files for 2012/2013, programme aims where any of the Learning Delivery Monitoring Codes (A46a, A46b or A46c) is 127 and A_ATA_EMP is not 1. For ILR files for 2013/2014 onwards, programme aims where any of the Learning Delivery Monitoring Codes (A46a, A46b, A46c or A46d) is 127 and D_AccToEmpEmpd is not 1.
Classroom learning provision reported through the employer responsive funding stream	Programme aims where any of the Learning Delivery Monitoring Codes (A46a, A46b, A46c or A46d) is 125.
Frameworks which are not funded	Programme aims where the Funding Model (A10) is equal to 99 in all years.

Section 2 – Processing standard files

Process flow diagram

13. This flow diagram below shows how Individualised Learner Record (ILR) and Large Employer Outcome Pilot (LEOP) information for multiple academic years is processed to produce the qualification success-rates dataset, which is the source of the information used for the qualification success-rate and minimum-standards reports.



Identifying Apprenticeship programme aims

14. The method of identifying Apprenticeship programme aims for 2009/2010 to 2010/2011 in the ILR is different to the method for 2011/2012 onwards. This is a result of the employer responsive ILR collection being replaced with the single ILR for 2011/2012. The employer responsive collection contained only Apprenticeship programme aims and workplace learning aims, whereas the single ILR also includes classroom learning aims.
15. The method for identifying Apprenticeship programme aims for each academic year in the ILR and LEOP datasets is shown below.

Source and year	Rules for identifying Apprenticeship programme aims
ILRs for, 2009/2010 and 2010/2011	<p>Programme aims where the Data Set Identifier Code (A10) is 35 and the Programme Type (A15) is 2, 3 or 10.</p> <p>(Programme aims for a provider with a UPIN of '110023' and a Learning Start Date (A27) before 1st April 2008 are not included in the qualification success-rates dataset.)</p>
ILR for 2011/2012 and 2012/2013	<p>Programme aims where:</p> <ul style="list-style-type: none"> the Data Set Identifier Code (A10) is 35; and the Programme Type (A15) is 2, 3, 10, 20 or 21. <p>Except where:</p> <ul style="list-style-type: none"> the Learning Delivery Monitoring Code (A46a, A46b or A46c) is 125 (classroom learning aim funded through the employer responsive funding model); or the Learning Delivery Monitoring Code (A46a, A46b or A46c) is 127 and A_ATA_EMP is 0 (Access to Apprenticeship where the learner is not employed).
ILR for 2013/2014 onwards	<p>Programme aims where:</p> <ul style="list-style-type: none"> the Data Set Identifier Code (A10) is 1; and the Programme Type (A15) is 2, 3, 10, 20, 21, 22 or 23. <p>Except where:</p> <ul style="list-style-type: none"> the Learning Delivery Monitoring Code (LDM1, LDM2, LDM3 or LDM4) is 127 and D_AccToAppEmpd is 0 (Access to Apprenticeship where the learner is not employed); the Learning Start Date (A27) is 31 July 2014 or earlier; the Learning Planned End Date (A28) is 31 July 2014 or earlier; and the Learning Actual End Date (A31) is on or before 29 October 2014 (90 days after 31 July 2014).
LEOP for 2011/2012 and 2012/2013	<p>Programme aims where the Aim Type is 1 and the Programme Type is 2, 3, 10, 20 or 21.</p>
LEOP for 2013/2014 onwards	<p>Programme aims where:</p> <ul style="list-style-type: none"> the Aim Type is 1; the Programme Type is 2, 3, 10, 20,21, 22 or 23. the Learning Start Date is 31st July 2014 or earlier; the Learning Planned End Date is 31st July 2014 or earlier; and the Learning Actual End Date is on or before 29th October 2014 (90 days after 31st July 2014).

Processing further-education college mergers

16. In the year after two or more further-education colleges merge to form a new college, the qualification success-rate methodology combines the programme aims for all colleges in the previous two years under the new merged college and produces qualification

success rates for the new college. This allows the new college to compare their current year's qualification success rate with a comparable qualification success rate for the previous two years.

17. Programme aims are combined by changing the provider numbers (UPIN and UKPRN) of the old colleges to be that of the new college's provider number. The original provider numbers are kept in the qualification success-rates dataset in the UPIN_orig and UKPRN_orig fields.
18. Note that this merger process only applies to further-education colleges. It does not apply to the mergers of any other types of provider (for example, private training providers).

Processing learner reference number changes

19. The learner reference number is used when matching programme aims across years. The learner reference number is assigned by the provider, and providers (or their software) will occasionally change them, either within an academic year or between years.
20. If the learner reference number is changed, the process of matching programme aims does not work correctly and two records are created in the qualification success-rates dataset for the same programme aim – one using the old learner reference number and one the new learner reference. As the programme aim from the earlier year's ILR file will not have any achievement data, it will reduce the provider's qualification success rate unless this matching issue is addressed.
21. To address this issue, we introduced the learner reference number mapping spreadsheet which allowed a provider to provide a cross reference mapping from the old and new learner reference numbers. For 2013/2014 the requirement to complete the spreadsheet was replaced by a mechanism where the provider completes the 'Learner reference in the previous year' field in the ILR.
22. The information in the learner reference number mapping spreadsheet and the 'Learner reference in the previous year' field is used to change the learner reference numbers for previous years to the latest learner reference number. The original learner reference number is kept in the qualification success-rates dataset in the LearnRefNumber_orig field.
23. Providers who no longer have a contract with us for 2014/2015 because their previous contract was less than the minimum contract level cannot provide achievement information in R04 of the 2014/2015 ILR return. This can reduce their timely qualification success rate. For affected providers who have become subcontractors, if the prime provider has entered a 'UKPRN in previous year', or filled in a learner reference number mapping spreadsheet identifying those apprentices who were previously studying with the subcontractor, the achievement information present in the prime provider's return R04 is applied to the programme aims of the subcontractor's apprentices.

Merging programme aims across years

24. Many programme aims take more than one year to complete. This means that the same programme aim for a particular apprentice can appear in more than one ILR or LEOP file. Programme aims can be completed earlier than planned, and some programme aims are not marked as completed.
25. As Apprenticeship qualification success rates are based on the programme aim's planned end date, the ILR files from all years have to be merged together in order to

identify all the programme aims that are planned to be completed in the years being reported on.

26. The ILR files and the LEOP files for an academic year are combined into a single file before the yearly files are merged.
27. Various combinations of variables are used to make sure that the correct programme aims are matched. The matching process uses Provider Number (L01), Learner Reference Number (L03), Programme Type (A15) and Framework Code (A26) together with the following combinations, in the following sequence.
 - Learning Start Date (A27), Learning Planned End Date (A28) and Achievement Date (A40)
 - Learning Start Date and Learning Planned End Date
 - Learning Start Date and Achievement Date
 - Learning Start Date
28. Once programme aim records have been matched, those from previous years are discarded, leaving just the latest information of the programme aim in the qualification success-rates dataset.

Qualification success-rate calculations

29. The main fields from the qualification success-rates dataset that are used in calculating the overall qualification success rates are as follows.
 - Hybrid End Year (P_Hybridendyr).
This field is the actual learning end year (P_Actendyr) or the expected learning end year (P_Expendyr), whichever is later.
 - P_Frm_Ach_Overall
This field is used in the overall qualification success-rate calculation and indicates whether a programme aim has been achieved.
 - P_Count_Overall
This field is used in the overall qualification success-rate calculation and indicates whether the programme aim has been completed.
30. For a given academic year the overall qualification success-rate percentage is calculated as follows.

$$\frac{\text{Number of funded programmes that have been achieved at any time}}{\text{Number of funded programmes that have finished}} \times 100$$

In terms of the variables on the qualification success-rates dataset, for a given hybrid end year (P_Hybridendyr) the overall qualification success-rate percentage is calculated as follows.

$$\frac{\text{Number of programme aims where P_Frm_Ach_Overall is 1 and Funded is 1}}{\text{Number of programme aims where P_Count_Overall is 1 and Funded is 1}} \times 100$$

31. The main fields from the qualification success-rate dataset that are used in calculating the timely qualification success rate are as follows.

- Expected End Year (P_Expendyr)
This field is the first calendar year of the academic period the Learning Planned End Date (A28) falls in. For example, if the Learning Planned End Date falls within the 2012/2013 academic year, P_Expendyr is '2012'.
- P_Frm_Ach_Timely
This field is used in the timely qualification success-rate calculation and indicates whether a programme aim has been achieved.
- P_Count_Timely
This field is used in the timely qualification success-rate calculation and indicates whether the programme aim was expected to be completed in a particular academic year.

32. For a given academic year the timely qualification success-rate percentage is calculated as follows.

$$\frac{\text{Number of funded programmes that have been achieved by their planned end date or within 90 days after it}}{\text{Number of funded programmes expected to be finished}} \times 100$$

In terms of the variables on the qualification success-rates dataset, for a given expected end year (P_Expendyr) the timely qualification success-rate percentage is calculated as follows.

$$\frac{\text{Number of programme aims where P_Frm_Ach_Timely is 1 and Funded is 1}}{\text{Number of programme aims where P_Count_Timely is 1 and Funded is 1}} \times 100$$

Further Information

33. If you need more information you can phone the service desk on 0370 267 0001 or email servicedesk@sfa.bis.gov.uk . Please provide a detailed explanation of your query..

Section 3 – Contents of the qualification success-rates dataset for records created from the ILR

Source or derivation of fields in the qualification success-rates dataset

34. The two reference files used in some of the derivations are as follows.

- a) The 2013/2014 Framework lookup file – this file holds programme-aim information from the Learning Aims Reference System (LARS) and the Learning Aims Reference Application (LARA), as at the ‘hard close’ of the 2013/2014 ILR (25 October 2014).
- b) The 2013/2014 Provider Details file – this file holds providers’ details from the Provider and Organisation Information Management System (PIMS), as at 31 July 2014.

Data item	Description	Data values	Source (ILR)	Derivation
AchDate	Achievement date (DDMMYYYY)		ILR standard files	Set to Achievement Date (A40).
Age_Band	A banding of the age on the start of the Apprenticeship programme.	1 = 16 to 18 2 = 19 to 23 3 = 24 or more	Derived	Set to 1 if D_AgeAimStart_Band is 1 or 2. Set to 2 if D_AgeAimStart_Band is 3 or 4. Set to 3 for any other value of D_AgeAimStart_Band .
Collection	The collection the information came from.		ILR standard files	Set to the snapshot number of the ILR standard file (for example, SN14).
CompStatus	The completion status of the programme aim.		ILR standard files	Set to Completion Status (A34).
D_AgeAimStart	The age of the apprentice on the start date of the programme aim.		ILR standard files	For ILR files for 2009/2010 to 2012/2013, set to the value of the ILR derived variable A_Agest . For ILR files for 2013/2014 onwards, set to the value of the ILR derived variable D_AgeAimStart .
D_AgeAimStart_Band	A banding of the apprentice’s age on the start date of the programme aim.		ILR standard files	Set to 1 if D_AgeAimStart is 0 to 15. Set to 2 if D_AgeAimStart is 16 to 18. Set to 3 if D_AgeAimStart is 19 to 20. Set to 4 if D_AgeAimStart is 21 to 23. Set to 5 if D_AgeAimStart is 24 to 59. Set to 6 if D_AgeAimStart is 60 to 120 Set to 9 if D_AgeAimStart is 121 or more.
D_EmpID	Employer identifier		ILR standard files	Set to Employer Identifier (A44).
D_Total_Payment	This is the total of all payments made to the provider over the life of the programme aim. (Note: it is the learning aims that make up an Apprenticeship framework that hold the funding information. There is no funding information		Derived	Enter the sum of the ILR derived variables A_Total_Payment_Y2D (for years 2009/2010 to 2012/2013) and D_TotalPayment_Y2D (for years 2013/2014 onwards) for each of the programme aims that make up the Apprenticeship framework, for the years that the programme aim is present on

Data item	Description	Data values	Source (ILR)	Derivation
	held on the programme aim.)			the ILR.
Datasource	The source of the record on the qualification success-rates dataset, which is either the ILR or the LEOP dataset.	ILR	Derived	Set to 'ILR'.
DateOfBirth	The apprentice's date of birth.		ILR standard files	Set to Date of Birth (L11).
DelLocPostCode	The postcode of the delivery location.		ILR standard files	Set to Delivery Location Postcode (A23).
Ethnicity	The apprentice's ethnic background.		ILR standard files	Set to Ethnicity (L12).
Funded	Identifies whether an Apprenticeship has ever received funding from us.	0 or 1	Derived	Set to 1 if the Funding Model (A10) is not 99 in any year. Otherwise set to 0.
FworkCode	Framework code		ILR standard files	Set to Framework Code (A26).
L_Disability	The apprentice's disability.		ILR standard files	For ILR files for 2009/2010 to 2010/2011, set to Disability (L15). For ILR files for 2011/2012 onwards, set to LLDD and Health Problem Code where the LLDD and Health Problem Type equals 'DS'.
L_LearnDiff	The apprentice's learning difficulty.		ILR standard files	For ILR files for 2009/2010 to 2010/2011, set to Learning Difficulty (L16). For ILR files for 2011/2012 onwards, set to LLDD and Health Problem Code where the LLDD and Health Problem Type equals 'LD'.
L_PriorPcode	The apprentice's home postcode.		ILR standard files	For ILR files for 2009/2010 to 2010/2011, set to Home Postcode (L17). For ILR files for 2011/2012 onwards, set to Postcode where Locator Type equals 2 and Contact Type equals 1.
LDM_1	National learning-aim monitoring – A		ILR standard files	For ILR files for 2009/2010 to 2010/2011, set to National Learning Monitoring Code A (A46A). For ILR files for 2011/2012 onwards, set to the first Learning Delivery Funding and Monitoring Code where the Learning Delivery Funding and Monitoring Type equals 'LDM'.
LDM_2	National learning-aim monitoring – B		ILR standard files	For ILR files for 2009/2010 to 2010/2011, set to National Learning Monitoring Code B (A46B). For ILR files for 2011/2012 onwards, set to the second Learning Delivery Funding and Monitoring Code where the Learning Delivery Funding and Monitoring Type equals 'LDM'.

Data item	Description	Data values	Source (ILR)	Derivation
LDM_3	National learning-aim monitoring – C		ILR standard files	For ILR files for 2009/2010 to 2010/2011, set to National Learning Monitoring Code C (A46C) . For ILR files for 2012/2013 onwards, set to the third Learning Delivery Funding and Monitoring Code where the Learning Delivery Funding and Monitoring Type equals 'LDM'.
LDM_4	National learning-aim monitoring – D		ILR standard files	For ILR files for 2009/2010 to 2012/2013, set to Null. For ILR files for 2013/2014 onwards, set to the fourth Learning Delivery Funding and Monitoring Code if the Learning Delivery Funding and Monitoring Type equals 'LDM'.
LearnActEndDate	The learning actual end date (DDMMYYYY).		ILR standard files	Set to Learning Actual End Date (A31) .
LearnPlanEndDate	The learning planned end date (DDMMYYYY).		ILR standard files	Set to Learning Planned End Date (A28) .
LearnRefNumber	The learner reference number.		ILR standard files	Set to Learner Reference Number (L03) .
LearnRefNumber_Orig	The learner reference number of the programme aim before the college merger process was applied to a provider's data.		Derived	See paragraphs 16 to 18 for information on setting this field.
LearnStartDate	The learning start date (DDMMYYYY).		ILR standard files	Set to Learning Start Date (A27) .
LLDDHealthProb	Indicates whether the apprentice considers that they have a learning difficulty, disability or health problem.		ILR standard files	Set to LLDD and Health Problem (L14) .
Outcome	The learning outcome of the programme aim.		ILR standard files	Set to Outcome Indicator (A35) .
P_Actendyr	The actual end year of the programme aim (20_ _).		Derived	Set to the first calendar year of the academic period the Learning Actual End Date (A31) falls in. (For example, if the Learning Actual End Date falls in the 2010/2011 academic year, P_Actendyr has the value of 2010.)
P_Count_Overall	For the overall qualification success-rate measure, this indicates whether the record should be counted towards the overall qualification success rate.	0 or 1	Derived	Set to 1 if: <ul style="list-style-type: none"> • Learning Actual End Date (A31) is present; • P_Trans_Overall is 0; • P_Plan_Break_Overall is 0; and • the Learning Actual End Date (A31) is no later than the end of the overall period (P_Period_End_Overall). Otherwise set to 0.
P_Count_Timely	For the timely qualification success-rate measure, this indicates whether the record should be counted towards the timely qualification success rate.	0 or 1	Derived	Set to 1 if: <ul style="list-style-type: none"> • P_Trans_Timely is 0; • P_Plan_Break_Timely is 0; and • the Learning Actual Planned End Date (A3428) is no later than the end of the timely period

Data item	Description	Data values	Source (ILR)	Derivation
				(P_Period_End_Timely). Otherwise set to 0.
P_Expendyr	The expected end year of the programme aim (20_ _).		Derived	Set to the value of the first calendar year of the academic period the Learning Planned End Date (A28) falls in. (For example, if the Learning Planned End Date falls in the 2012/2013 academic year, P_Expendyr has the value of 2012.)
P_Frm_Ach_Overall	For the overall qualification success-rate measure, this indicates whether the programme aim has been achieved.	0 or 1	Derived	Set to 1 if: <ul style="list-style-type: none"> • P_Prog_Status is 1 (achieved); • P_Trans_Overall is 0; • P_Plan_Break_Overall is 0; and • the Learning Actual End Date (A31) is not later than the end of the overall period (P_Period_End_Overall). Otherwise set to 0.
P_Frm_Ach_Timely	For the timely qualification success-rate measure, this indicates whether the programme aim has been achieved.	0 or 1	Derived	Set to 1 if: <ul style="list-style-type: none"> • P_Prog_Status is 1 (achieved); • P_Trans_Timely is 0; • P_Plan_Break_Timely is 0; • the Learning Actual Planned End Date (A3128) is not later than the end of the timely period (P_Period_End_Timely); and • the Learning Actual End Date (A31) is on or before the Learning Planned End Date (A28), or no more than 90 days after it. Otherwise set to 0.
P_Hybridendyr	The hybrid end year of the programme aim (20_ _).		Derived	Set to: <ul style="list-style-type: none"> • the actual learning end year (P_Actendyr); or • the expected learning end year (P_Expendyr); whichever is higher.
P_In_0910	The programme aim is in the dataset for 2009/2010.	0 or 1	Derived	Set to 1 if the aim is taken from the 2009/2010 ILR. Otherwise set to 0.
P_In_1011	The programme aim is in the dataset for 2010/2011.	0 or 1	Derived	Set to 1 if the aim is taken from the 2010/2011 ILR. Otherwise set to 0.
P_In_1112	The programme aim is in the dataset for 2011/2012.	0 or 1	Derived	Set to 1 if the aim is taken from the 2011/2012 ILR. Otherwise set to 0.
P_In_1213	The programme aim is in the dataset for 2012/2013.	0 or 1	Derived	Set to 1 if the aim is taken from the 2012/2013 ILR. Otherwise set to 0.

Data item	Description	Data values	Source (ILR)	Derivation
P_In_1314	The programme aim is in the dataset for 2013/2014.	0 or 1	Derived	Set to 1 if the aim is taken from the 2013/2014 ILR. Otherwise set to 0.
P_In_1415	The programme aim is in the dataset for 2014/2015.	0 or 1	Derived	Set to 1 if the aim is taken from the 2014/2015 ILR. Otherwise set to 0.
P_Period_End_Overall	The last day of the overall reporting period (DDMMYYYY).		Derived	Set to the last day of the overall reporting period. (For example, if the reporting period for the overall qualification success rate for 2013/2014 is return 14, P_Period_End_Overall is set to 31/07/2014.)
P_Period_End_Timely	The last day of the timely reporting period (DDMMYYYY).		Derived	Set to the last day of the timely reporting period. (For example, if the reporting period for the timely qualification success rate for 2013/2014 is return 14, P_Period_End_Timely is set to 31/07/2014.)
P_Plan_Break_Overall	For the overall qualification success-rate measure, this indicates whether the apprentice is on a planned break.	0 or 1	Derived	Set to 1 if: <ul style="list-style-type: none"> • P_Prog_Status is 11 or 12; and • the Learning Actual End Date (A31) is not later than the end of the overall period (P_Period_End_Overall). Otherwise set to 0.
P_Plan_Break_Timely	For the timely qualification success-rate measure, this indicates whether the apprentice is on a planned break.	0 or 1	Derived	Set to 1 if: <ul style="list-style-type: none"> • P_Prog_Status is 11 or 12; • the Learning Actual End Date (A31) is not later than the end of the timely period (P_Period_End_Timely); and • the Learning Actual Planned End Date (A3128) is on or before the Learning Planned End Date (A28), or no more than 90 days after it. Otherwise set to 0.
P_ProgStatus	The status of the programme aim.		ILR standard files	For ILR files for 2009/2010 to 2012/2013, set to the value of the ILR derived variable P_Prog_Status . For ILR files for 2013/2014 onwards, set to the value of the ILR derived variable P_ProgStatus .
P_Startyr	The start year of the programme aim (20_ _).		Derived	Set to the value of the first calendar year of the academic period the Learning Start Date (A27) falls in. (For example, if the Learning Start Date falls in the 2011/2012 academic year, P_Startyr is set to 2011.)
P_Trans_Overall	For the overall qualification success-rate measure, this indicates whether an apprentice has transferred to another programme.	0 or 1	Derived	Set to 1 if: <ul style="list-style-type: none"> • P_Prog_Status is 7, 8 or 10; and • the Learning Actual End Date (A31) is not later than the end of the overall period (P_Period_End_Overall).

Data item	Description	Data values	Source (ILR)	Derivation
				Otherwise set to 0.
PwayCode	The pathway of the Apprenticeship framework being undertaken.			Not populated for ILR files for 2009/2010 to 2011/2012. For ILR files for 2012/2013 onwards set to Apprenticeship Pathway .
P_Trans_Timely	For the timely qualification success-rate measure, this indicates whether an apprentice has transferred to another programme.	0 or 1	Derived	Set to 1 if: <ul style="list-style-type: none"> • P_Prog_Status is 7, 8 or 10; • the Learning Actual Planned End Date (A3428) is not later than the end of the timely period (P_Period_End_Timely); and • the Learning Actual End Date (A31) is on or before the Learning Planned End Date (A28), or no more than 90 days after it. Otherwise set to 0.
ProgType	The programme type.		ILR standard files	Set to Programme Type (A15) .
Prv_Name	The provider's name.		ILR 2013/2014 provider-details file	Obtained from the ILR 2013/2014 provider-details file.
Prv_Type	The type of provider.		ILR 2013/2014 provider-details file	Obtained from the ILR 2013/2014 provider-details file.
Pst_LA	The local authority area for the delivery location (A23).		Derived	Obtained from a local authority look-up file, using the Delivery Location Postcode (A23)
SecSubjAreaTier1	Sector subject area – the broad (tier 1) classification of the subject of the programme aim.		Derived	Set to SecSubjAreaTier1 from the framework lookup.
SecSubjAreaTier2	The more specialised classification (tier 2) of the subject of the programme aim.		Derived	Set to SecSubjAreaTier2 from the framework lookup.
Sex	The apprentice's sex.		ILR standard files	Set to Sex (L13) .
UKPRN	The UK provider reference number (UKPRN).		ILR standard files	Set to UK Provider Reference Number (L46) .
UKPRN_orig	The UKPRN of the programme aim before the college merger process was applied to a provider's data.		Derived	See paragraphs 16 to 18 for information on setting this field.
ULN	Unique learner number		ILR standard files	Set to Unique Learner Number (L45) .
UPIN	Provider UPIN	(For example, 105000)	ILR standard files	For ILR files for 2009/2010 to 2010/2011, set to Provider Number (L01).

Data item	Description	Data values	Source (ILR)	Derivation
				For ILR files for 2011/2012 onwards, set to UPIN from the PIMS that corresponds to the UK Provider Reference Number .
UPIN_Orig	The UPIN of the programme aim before the college merger process was applied to a provider's data.		Derived	See paragraphs 16 to 18 for information on setting this field.
Year	The current academic year for the qualification success-rates dataset.	2013/14	Derived	Set to '2013/14'.

Section 4 – Contents of the qualification success-rates dataset for records created from the LEOP dataset

Source or derivation of fields in the qualification success-rates dataset

35. The two reference files used in some of the derivations are as follows.

- c) The 2013/2014 Framework lookup file – this file holds programme-aim information from the Learning Aims Reference System (LARS) and the Learning Aims Reference Application (LARA), as at the ‘hard close’ of the 2013/2014 ILR (25 October 2014).
- d) The 2013/2014 Provider Details file – this file holds providers’ details from the Provider and Organisation Information Management System (PIMS), as at 31 July 2014.

Data item	Description	Data values	Source (LEOP)	Derivation
AchDate	The achievement date.	Not populated	–	–
Age_Band	A banding of the apprentice’s age at the start of the Apprenticeship programme.	1 = 16 to 18 2 = 19 to 23 3 = 24 or more	Derived	Set to 1 if D_AgeAimStart_Band is 1 or 2. Set to 2 if D_AgeAimStart_Band is 3 or 4. Set to 3 for other values of D_AgeAimStart_Band .
Collection	The collection the data was sourced from.		LEOP standard files	Set to the snapshot number of the LEOP standard file (for example, SN12).
CompStatus	The completion status of the programme aim.		LEOP standard files	Set to Completion Status .
D_AgeAimStart	The age of the apprentice on the start date of the programme aim.		LEOP standard files	Set to A_Agest .
D_AgeAimStart_Band	A banding of the apprentice’s age on the start date of the programme aim.		Derived	Set to 1 if A_Agest is 0 to 15. Set to 2 if A_Agest is in the range 16 to 18. Set to 3 if A_Agest is in the range 19 to 20. Set to 4 if A_Agest is in the range 21 to 23. Set to 5 if A_Agest is in the range 24 to 59. Set to 6 if A_Agest is in the range 60 to 120. Set to 9 for any other value of A_Agest .
D_EmplID	Employer identifier	Not populated	–	–
D_Total_Payment	The total funding a provider could potentially receive.	Not populated	–	–
Datasource	The source of the record on the qualification success-rates dataset, which is either the ILR, LEOP or EOP dataset.	LEOP	Derived	Set to LEOP.

Data item	Description	Data values	Source (LEOP)	Derivation
DateOfBirth	The apprentice's date of birth.		LEOP standard files	Set to Date of Birth .
DelLocPostCode	The postcode of the delivery location.		LEOP standard files	Set to Delivery Location Postcode .
Ethnicity	The apprentice's ethnic background.		LEOP standard files	Set to Learner Ethnicity .
Funded	Identifies whether an Apprenticeship has ever received funding from us.		Derived	Set to 1
FworkCode	Framework code		LEOP standard files	Set to Framework Code .
L_Disability	The apprentice's disability.	Not populated	–	–
L_LearnDiff	The apprentice's learning difficulty.	Not populated	–	–
L_PriorPcode	The apprentice's home postcode.		LEOP standard files	Set to Learner Home Postcode .
LDM_1	National learning-aim monitoring – A	Not populated	–	–
LDM_2	National learning-aim monitoring – B	Not populated	–	–
LDM_3	National learning-aim monitoring – C	Not populated	–	–
LDM_4	National learning-aim monitoring – D	Not populated	–	–
LearnActEndDate	The learning actual end date (DDMMYYYY).		LEOP standard files	Set to Learning Actual End Date .
LearnPlanEndDate	The learning planned end date (DDMMYYYY).		LEOP standard files	Set to Learning Planned End Date .
LearnRefNumber	The learner reference number.		Derived	Looked up from the Learning Records Service using the ULN .
LearnRefNumber_Orig	The learner reference number of the programme aim before the college merger process was applied to a provider's data.		Derived	Set to the LearnRefNumber value.
LearnStartDate	The learning start date (DDMMYYYY).		LEOP standard files	Set to Learning Start Date .
LLDDHealthProb	Indicates whether the apprentice considers that they have a learning difficulty, disability or health problem.		LEOP standard files	Set to LLD and Health Problem Indicator .
Outcome	The learning outcome of the programme aim.		LEOP standard files	Set to Outcome Indicator .

Data item	Description	Data values	Source (LEOP)	Derivation
P_Actendyr	The actual end year of the programme aim (20__).		Derived	Set to the first calendar year of the academic period the Learning Actual End Date falls in. (For example, if the Learning Actual End Date falls in the 2010/2011 academic year, P_Actendyr has the value of 2010.)
P_Count_Overall	For the overall qualification success-rate measure, this indicates whether the record should be counted towards the overall qualification success rate.	0 or 1	Derived	Set to 1 if: <ul style="list-style-type: none"> • Learning Actual End Date is populated; • P_Trans_Overall is 0; • P_Plan_Break_Overall is 0; and • the Learning Actual End Date is no later than the end of the overall period (P_Period_End_Overall). Otherwise set to 0.
P_Count_Timely	For the timely qualification success-rate measure, this indicates whether the record should be counted towards the timely qualification success rate.	0 or 1	Derived	Set to 1 if: <ul style="list-style-type: none"> • P_Trans_Timely is 0; • P_Plan_Break_Timely is 0; and • the Learning Actual Planned End Date is no later than the end of the timely period (P_Period_End_Timely). Otherwise set to 0.
P_Expendyr	The expected end year of the programme aim (20__).		Derived	Set to the value of the first calendar year of the academic period the Learning Planned End Date falls in. (For example, if the Learning Planned End Date falls in the 2012/2013 academic year, P_Expendyr has the value of 2012.)
P_Frm_Ach_Overall	For the overall qualification success-rate measure, this indicates whether the apprentice has achieved the framework.	0 or 1	Derived	Set to 1 if: <ul style="list-style-type: none"> • P_Prog_Status is 1 (achieved); • P_Trans_Overall is 0; • P_Plan_Break_Overall is 0; and • the Learning Actual End Date is not later than the end of the overall period (P_Period_End_Overall). Otherwise set to 0.
P_Frm_Ach_Timely	For the timely qualification success-rate measure, this indicates whether the apprentice has achieved the framework.	0 or 1	Derived	Set to 1 if; <ul style="list-style-type: none"> • P_Prog_Status is 1 (achieved); • P_Trans_Timely is 0; • P_Plan_Break_Timely is 0; • the Learning Actual Planned End Date is not later than the end of the timely period (P_Period_End_Timely); and • the Learning Actual End Date is on or before the Learning Planned End Date, or no more than 90 days after it. Otherwise set to 0.

Data item	Description	Data values	Source (LEOP)	Derivation
P_Hybridendyr	The hybrid end year of the programme aim (20_ _).		Derived	Set to: <ul style="list-style-type: none"> the actual learning end year (P_Actendyr); or the expected learning end year (P_Expendyr); whichever is higher.
P_In_0910	The programme aim is in the dataset for 2009/2010.	0	Derived	Set to 0.
P_In_1011	The programme aim is in the dataset for 2010/2011.	0	Derived	Set to 0.
P_In_1112	The programme aim is in the dataset for 2011/2012.	0 or 1	Derived	Set to 1 if the programme aim is taken from the 2011/2012 LEOP dataset. Otherwise set to 0.
P_In_1213	The programme aim is in the dataset for 2012/2013.	0 or 1	Derived	Set to 1 if the programme aim is taken from the 2012/2013 LEOP dataset. Otherwise set to 0.
P_In_1314	The programme aim is in the dataset for 2013/2014.	0 or 1	Derived	Set to 1 if the programme aim is taken from the 2013/2014 LEOP dataset. Otherwise set to 0.
P_In_1415	The programme aim is in the dataset for 2014/2015.	0 or 1	Derived	Set to 1 if the programme aim is taken from the 2014/2015 LEOP dataset. Otherwise set to 0.
P_Period_End_Overall	The last day of the overall reporting period (DDMMYYYY).		Derived	Set to the last day of the overall reporting period. (For example, if the reporting period for the overall qualification success rate for 2013/2014 is return 14, P_Period_End_Overall is set to 31072014.)
P_Period_End_Timely	The last day of the timely reporting period (DDMMYYYY).		Derived	Set to the last day of the timely reporting period. (For example, if the reporting period for the timely qualification success rate for 2013/2014 is return 14, P_Period_End_Timely is set to 31072014.)
P_Plan_Break_Overall	For the overall qualification success-rate measure, this Indicates whether the apprentice is on a planned break.	0 or 1	Derived	Set to 1 if: <ul style="list-style-type: none"> P_ProgStatus is 11; and the Learning Actual End Date is not later than the end of the overall period (P_Period_End_Overall). Otherwise set to 0.
P_Plan_Break_Timely	For the timely qualification success-rate measure, this indicates whether the apprentice is on a planned break.	0 or 1	Derived	Set to 1 if; <ul style="list-style-type: none"> P_ProgStatus is 11; the Learning Actual Planned End Date is not later than the end of the timely period (P_Period_End_Timely); and the Learning Actual End Date is on or before the Learning Planned End Date, or no more than 90 days after it. Otherwise set to 0.

Data item	Description	Data values	Source (LEOP)	Derivation
P_ProgStatus	The status of the programme aim.		Derived	<p>Set the value as follows.</p> <ul style="list-style-type: none"> Set to 0 (continuing) if the Learning Actual End Date is not populated. Set to 1 (achieved) if the Learning Actual End Date is populated and the Learning Outcome is 1. Set to 11 (apprentice is taking a planned break from learning) if the Completion Status is 6. Set to 8 (transfer to a new programme at the same provider) if the Completion Status is 4 or 5. <p>If none of the conditions above apply, set to 6 (not achieved).</p> <p>(Note: as the LEOP dataset does not include a 'Reason Learning Ended' P_Prog_Status, values of 9 (transfer to new provider) and 10 (transfer to a new provider forced by SFA or EFA intervention) cannot be determined.</p>
P_Startyr	The start year of the programme aim (20_ _).		Derived	<p>Set to the value of the first calendar year of the academic period the LearnStartDate falls in. (For example, if the LearnStartDate falls in the academic year 2012/2013 P_Startyr is set to 2012.)</p>
P_Trans_Overall	For the overall qualification success-rate measure, this indicates whether an apprentice has transferred to another programme.	0 or 1	Derived	<p>Set to 1 if:</p> <ul style="list-style-type: none"> P_Prog_Status is 8; and the Learning Actual End Date is not later than the end of the overall period (P_Period_End_Overall). <p>Otherwise set to 0.</p>
P_Trans_Timely	For the timely qualification success-rate measure, this indicates whether an apprentice has transferred to another programme.	0 or 1	Derived	<p>Set to 1 if:</p> <ul style="list-style-type: none"> P_Prog_Status is 8; the Learning Actual Planned End Date is not later than the end of the timely period (P_Period_End_Timely); and the Learning Actual End Date is on or before the Learning Planned End Date, or no more than 90 days after it. <p>Otherwise set to 0.</p>
PWayCode	The pathway of the Apprenticeship framework being undertaken.	Not populated	–	–
ProgType	The type of programme.		LEOP standard files	Set to Programme Type .
Prv_Name	The provider's name.		ILR 2013/2014 provider-details file	Obtained from the ILR 2013/2014 provider-details file.

Data item	Description	Data values	Source (LEOP)	Derivation
Prv_Type	The type of provider.		ILR 2013/2014 provider-details file	Obtained from the ILR 2013/2014 provider-details file.
Pst_LA	The local authority district for the delivery location.		ILR 2013/2014 provider-details file	Obtained from the ILR 2013/2014 provider-details file.
SecSubjAreaTier1	Sector subject area – the broad (tier 1) classification of the subject of the programme aim.		Derived	Set to SecSubjAreaTier1 from the framework lookup.
SecSubjAreaTier2	The more specialised classification (tier 2) of the subject of the programme aim.		Derived	Set to SecSubjAreaTier2 from the framework lookup.
Sex	The apprentice's sex.		LEOP standard files	Set to Gender .
ULN	Unique learner number (ULN)		LEOP standard files	Set to ULN .
UKPRN	UK provider reference number (UKPRN)		LEOP standard files	Set to UKPRN .
UKPRN_orig	The UKPRN of the programme aim before the college merger process was applied to a provider's data.		Derived	Set to the UKPRN value.
UPIN	Provider number		ILR 2013/2014 provider-details file	Looked up from PIMS using the UKPRN .
UPIN_Orig	The UPIN of the programme aim before the college merger process was applied to a provider's data.		Derived	Set to the UPIN value.
Year	The current academic year for the qualification success-rates dataset.	2013/14	Derived	Set to '2013/14'.

Section 5 – Contents of the LEOP dataset

Data items contained in the LEOP dataset

42. This section lists the data items which are supplied by employers in the Large Employer Outcome Pilot dataset, or which are obtained from the Learning Records Service. It also lists selected derived variables calculated for the dataset which are used in the derivation of some of the fields on the qualification success-rates dataset. These derived variables are calculated using the same method as for the ILR. Section 4 describes how qualification success-rate dataset records are created from the data items in the LEOP dataset.

Field (LEOP)	Source	Notes
UKPRN	Employer's data file	
ULN	Employer's data file	Unique learner number
Family name	Employer's data file	
First name	Employer's data file	
Date of Birth	Learning Records Service	Looked up from the Learning Records Service using ULN, first name and family name.
Gender	Learning Records Service	Looked up from the Learning Records Service using ULN, first name and family name.
Learner Home Postcode	Learning Records Service	Looked up from the Learning Records Service using ULN, first name and family name.
Learner Ethnicity	Employer's data file	ILR 2013/2014 codes (codes based on the 2012 census) are used.
Learning Aim Reference	Employer's data file	A valid learning aim reference in LARS. The LEOP data file can be used return details of Apprenticeships or workplace learning aims. The learning aim reference is not used for Apprenticeships.
Aim Type	Employer's data file	ILR 2013/2014 codes used: 1 – Programme aim 2 – Main learning aim within an Apprenticeship programme 3 – Component learning aim within a programme 4 – Learning aim that is not part of a programme
Programme Type	Employer's data file	ILR 2013/2014 codes are used.
Framework Code	Employer's data file	A valid framework code in LARS.
Learning Start Date	Employer's data file	
Learning Planned End Date	Employer's data file	
Learning Actual End Date	Employer's data file	
Completion Status	Employer's data file	ILR 2013/2014 codes are used.
Outcome Indicator	Employer's data file	ILR 2013/2014 codes are used.
Proportion of Funding Remaining	Employer's data file	A value between 1 and 100 to indicate the percentage of funding for apprentices who are not entitled to full funding for the framework or programme aim.

Field (LEOP)	Source	Notes
LLDDHealthProb	Employer's data file	ILR 2013/2014 codes are used.
Delivery Location Postcode	Employer's data file	The rules specified for the 2013/2014 ILR are applied.
A_AGEST	Derived variable	
A_LEAVE_ACM	Derived variable	
A_SSA_T1	Derived variable	
A_SSA_T2	Derived variable	

Changes from the 2012/2013 document

36. The rules for choosing aims from the 2013/2014 ILR files have been added.

37. A number of changes have been made to the qualification success-rates dataset to:

- allow qualification success rates to be calculated for funded aims only;
- rename fields to match those in the 2013/2014 ILR standard files; and
- change derivations

New fields

Field name	Reason for including it
In_LR_1314	To cater for 2013/2014 data.
In_LR_1415	To cater for 2014/2015 data.
LDM_4	Because this field has been added to the 2013/2014 ILR.
Pst_LA	Reporting is needed by local authority area.
UKPRN_Orig	The UKPRN of the programme aim before the college merger is needed.
Year	The current academic year for the qualification success-rates dataset is needed.

Removed fields

Field name	Reason for removing it
In_LR_0809	Data from 2008/2009 is not used to produce the 2013/2014 qualification success-rates dataset.
Pst_LEA	Reporting is not needed by local education authority area.

Renamed fields

Old field name	New field name
A_Agest	D_AgeAimStart
A_Agestb	D_AgeAimStart_Band
A15	ProgType
A23	DelLocPostCode
A26	FworkCode

Old field name	New field name
A27	LearnStartDate
A28	LearnPlanEndDate
A34	CompStatus
A35	Outcome
A46a	LDM_1
A46b	LDM_2
A46c	LDM_3
A_Total_Payment	D_TotalPayment
L01	UPIN
L01_orig	UPIN_orig
L03	LearnRefNumber
L03_orig	LearnRefNumber_orig
L11	DateofBirth
L12	Ethnicity
L13	Sex
L14	LLDDHealthProb
L15	L_Disability
L16	L_LearnDiff
L17	L_PriorPcode
L46	UKPRN
SSA_Tier1_Code	SecSubjAreaTier1
SSA_Tier2_Code	SecSubjAreaTier2

Fields whose derivation has changed

Field name	Reason for change
Age_Band	Reporting is now by age bands 16 to 18, 19 to 23 and 24 or over.
D_AgeAimStart_Band	Reporting is now by age bands 16 to 18, 19 to 23 and 24 or over.

Changes made from version 1.3 (published 05 September 2014)

Changes from version 1.3 are highlighted in yellow

Fields whose derivation has changed

Field name	Reason for the change
P_Ach_Timely	Derivation changed to check whether the Learning Planned End Date is no later than the end of the timely period.
P_Count_Timely	Derivation changed to check whether the Learning Planned End Date is no later than the end of the timely period.
P_Plan_Break_Timely	Derivation changed to check whether the Learning Planned End Date is no later than the end of the timely period.

Field name	Reason for the change
P_Trans_Timely	Derivation changed to check whether the Learning Planned End Date is no later than the end of the timely period.

Changes made from version 1.4 (published 21 October 2014)

Changes from version 1.4 are highlighted in green

Inclusion of section 33 that gives the contact details for the service desk.



Author	Skills Funding Agency
Date created	09 December 2014
Document ref.	Apprenticeship QSR Data Set Production and Data Definition
Version	1.5