



# Statistical Bulletin

27 November 2014

Coverage: UK  
Theme: Migration

## *National Insurance Number Allocations to Adult Overseas Nationals Entering the UK – registrations to September 2014*

*This annual report provides statistics regarding National Insurance Numbers (NINo) allocated to adult overseas nationals entering the United Kingdom (UK). A NINo is generally required by any overseas national looking to work or claim benefits / tax credits in the UK, including the self employed or students working part time.*

*The figures are based on recorded registration date on the HMRC National Insurance Recording and Pay as you Earn System, i.e. after the NINo application process has been completed. **This may be a number of weeks or months (or in some cases years) after arriving in the UK.***

*A change to the process of recording NINOs during the quarter April-June 2014, means that the volume of NINo registrations recorded were lower in that quarter and then higher in the subsequent quarter July to September 2014 than would otherwise be the case. **Therefore, comparisons of NINo registrations over time for the latest quarterly periods should be viewed with caution, the impact on annual figures is negligible. The process issues impact all nationalities i.e. the impact is not skewed to migrants from specific countries.***

Statistics on National Insurance Number Allocations to Adult Overseas Nationals Entering the UK are **full National Statistics**;

### Headline Figures:

- The total number of NINo registrations to adult overseas nationals in the 12 months to September 2014 was 668 thousand, an increase of 70 thousand (12%) on the previous year.
- **Within the European Union (EU)** - The number of NINo registrations from EU nationals in the 12 months to September 2014 was 505 thousand, an increase of 83 thousand (20%) on the previous year.
- The number of NINo registrations to adult overseas nationals from EU2 nationals (Bulgaria and Romania) in the 12 months to September 2014 was 135 thousand, an increase of 107 thousand (373%) on the previous year.
- **Rest of the world** - The number of NINo registrations to adult overseas nationals from outside the EU the 12 months to September 2014 was 161 thousand, a fall of 14 thousand (8%) on the previous year.

**DWP** Department for Work and Pensions

**Issued by:**  
IES  
Department for Work and Pensions

Telephone:  
Press Office: 0203 267 5160

Website:  
<http://www.gov.uk/dwp>

### **Statistician:**

Steve Watkins  
IES  
Department for Work and Pensions  
Kings Court  
80 Hanover Way  
Sheffield  
S3 7UF

Telephone: 01142098387  
Email:  
[steven.watkins@dwpgsi.gov.uk](mailto:steven.watkins@dwpgsi.gov.uk)

**Next release of NINo registration data:**  
26<sup>th</sup> February 2015

*If you have any comments or requests regarding this publication, please contact DWP via [stats-consultation@dwpgsi.gov.uk](mailto:stats-consultation@dwpgsi.gov.uk).*



**Contents**

*Page*

Definition of World Area

3

**1 NINo Registrations to adult overseas nationals entering the UK**

**Time series**

Fig 1.1 : time series by quarter (12 month total to the end of the quarter)  
December 2002 to September 2014

4

**World area and nationality**

Fig 1.2 : Top 20 countries year to September 2014

5

**3 Sources / Notes**

Notes

6

*Further information and statistics on NINo registrations to adult overseas nationals can be obtained using the Department's internet-based interactive tabulation tool - Stat-Xplore ([click here](#))*



## ***Definition of World Area***

For reporting purposes, countries have been grouped into ‘**world areas**’ based primarily on geographical location. Throughout this document Europe is represented as 3 world areas reflecting their status within the European Union (EU). These are :

**Europe - EU excluding Accession Countries** : (EU14) Founder members or countries acceding to the EU prior to May 2004. These comprise of Austria, Belgium, Denmark, Finland, France, Germany, Greece, Italy, Luxembourg, Netherlands, Portugal, Republic of Ireland, Spain, Sweden

**Europe - EU Accession Countries** : Countries acceding to the EU from May 2004.

**Joined the EU 1<sup>st</sup> May 2004** – (EU8) Czech Republic, Estonia, Hungary, Republic of Latvia, Republic of Lithuania, Poland, Slovak Republic, Republic of Slovenia.

Cyprus and Malta (Joined the EU 1<sup>st</sup> May 2004 but not referred to as part of the EU8)

**Joined the EU 1<sup>st</sup> January 2007** – (EU2) Bulgaria, Romania

**Joined the EU 1<sup>st</sup> July 2013** - Croatia

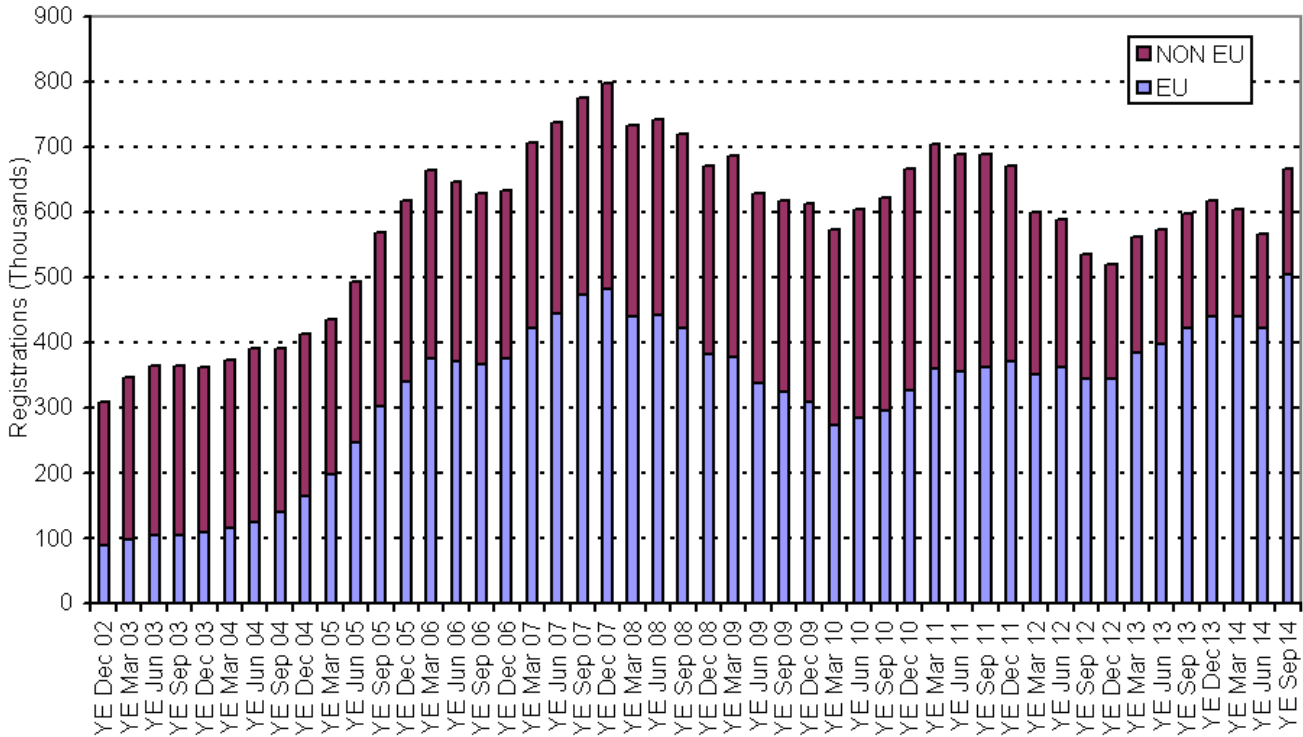
**Europe – Non EU** : European countries that are not members of the EU at 1<sup>st</sup> April 2014.

Note : European Economic Area (EEA) comprises of the member states of the European Union plus Iceland, Liechtenstein, and Norway

**1 NINo Registrations to adult overseas nationals entering the UK**

**Time series**

**Fig 1.1 : NINo registrations to adult overseas nationals entering the UK, registration time series by quarter (12 month total to the end of the quarter), December 2002 to September 2014.**



Source: 100% extract from National Insurance Recording and Pay as you Earn System (NPS).

1. Registration date is derived from the date at which a NINo is maintained on the NPS
2. For consistency of reporting, EU refers to current EU status at Publication for the entire Back Series including the periods before Accession and after transitional arrangements have ended
3. Caution should be taken in interpreting trends based on raw quarterly data, hence a '12 month to date' rolling total is shown
- 4 **Caution - A change to the process of recording NINOs during the quarter April-June 2014, means that the volume of NINo registrations recorded are lower in this quarter than would otherwise be the case.**

**Within the European Union (EU):**

In the 12 months to September 2014, 308 thousand NINo's were registered to the EU accession countries (who acceded to the EU from 2004 onwards, see definition p3) – an increase of 83 thousand (37%) on the previous year.

Registrations to other EU nationals (EU14), 197 thousand, no change to the previous year.

**Rest of the world:**

Outside of the European Union, annual registrations to all world areas have typically fallen to lowest levels since the reporting period began (2002/03).

Those to European, non-EU nationals remained steady.

84 thousand NINo's were registered to Asian & Middle East nationals in the 12 months to September 2014 – 9% lower than the previous year.

Registrations to those from the Americas fell by 8% to 22 thousand.

Registrations from Africans fell by 7% (to 30 thousand) and from Australasia and Oceania fell by 12% (to 14 thousand).

Fig 1.1 has been derived from the quarterly time series available in [Stat Xplore](#) :



**Fig 1.2 : NINo registrations to adult overseas nationals entering the UK, top 20 countries, 12 months to September 2014**

year to September 2014 Rank*		Country	year to September 2014 Total (thousands)	% change from September 2013	year to September 2013 (thousands)	year to Sep 2013 Rank
1 ▲		Romania	103.85	468%	18.28	9
2 ▼		Poland	97.64	-7%	105.05	1
3 ▼		Spain	45.59	-9%	49.86	2
4 ▼		Italy	45.53	16%	39.41	3
5 ▲		Bulgaria	31.53	205%	10.33	18
6 ▼		India	29.45	-4%	30.70	4
7 ▼		Portugal	28.05	-1%	28.26	5
8 ●		France	22.73	-3%	23.33	8
9 ▼		Hungary	21.30	-18%	26.12	7
10 ▼		Rep of Lithuania	19.32	-26%	26.25	6
11 ▼		Rep of Ireland	16.75	-1%	16.87	10
12 ▼		Pakistan	11.90	-19%	14.77	11
13 ▲		China Peoples Rep	11.26	-5%	11.89	14
14 ▼		Slovak Rep	11.08	-9%	12.17	13
15 ▲		Germany	10.84	-5%	11.38	16
16 ▲		Nigeria	10.47	-3%	10.78	17
17 ▼		Australia	10.31	-12%	11.65	15
18 ▼		Rep of Latvia	9.67	-26%	13.05	12
19 ●		Greece	9.36	1%	9.28	19
20 ▲		Czech Rep	8.73	-1%	8.78	21

\*▲, ▼ : indicates **ranking** movement from previous year

Source: 100% extract from National Insurance Recording and Pay as you Earn System (NPS).

Factors thought to be influencing the trends in terms of NINo registrations across different nationalities / world areas are:

- Lifting of transitional employment restrictions (1<sup>st</sup> January 2014) for EU2 nationals - Romanian nationals are now showing the highest annual number of NINo registrations. Previously, Polish nationals have recorded the highest number of annual registrations from 2011.
- The restrictions placed on **non-EEA** workers and students – India, Pakistan, China Peoples Republic, Australia and Nigeria all showing continued falling trends since 2010/11.
- High unemployment rates, particularly from countries most severely impacted by the euro zone crisis – Though new registrations have fallen, Spain, Italy and Portugal all feature highly.

Note - Bulgaria and Romania joined the European Union (EU) on 1 January 2007. Since then, migrants from Bulgaria and Romania (collectively known as the EU2) coming to the UK were subject to transitional employment restrictions, which placed limits on the kind of employment they could undertake. These restrictions ended on 1 January 2014.

**Previously published analysis indicates that EU2 NINo registration figures from the 1<sup>st</sup> January 2014 are actually reflecting migration over an extended period: Approx 50% of those EU2 nationals registering for a NINo since transitional controls were lifted had arrived in the UK before 1<sup>st</sup> January 2014 – [see analytical report May 2014](#)**

### 3 Notes/Sources

DWP receive a quarterly cumulative scan from HMRC's National Insurance Recording and Pay as you Earn System (NPS) which contains details of all adult overseas nationals allocated a NINo. This is used to produce these National Statistics.

Data released on 27<sup>th</sup> November 2014 relates to NINo registrations for the period to 30<sup>th</sup> September 2014. the statistics are published as part of the scheduled timetable for the release of cross-Government migration statistics.

*A change to the process of recording NINOs during the quarter April-June 2014, means that the volume of NINo registrations recorded were lower in that quarter and then higher in the subsequent quarter July to September 2014 than would otherwise be the case. Therefore, comparisons of NINo registrations over time for the latest quarterly periods should be viewed with caution, the impact on annual figures is negligible.*

The registration date referred to in this report represents the date the information on the individual was processed on HM Revenue and Customs' National Insurance Recording and Pay as you Earn System (NPS) i.e. after the NINo application and allocation process has been completed. This may be a number of weeks or months after arriving in the UK. The registration series is not subject to any future change.

The DWP NINo data covers people allocated a NINo for all types of work – including the self-employed and students working part-time – and whatever the length of stay in the UK. It also covers adult overseas nationals allocated a NINo to claim benefits or tax credits. In addition, the data is a 100% sample held at case-level data sources. In particular, the data can be merged with benefits data to show how many entrants claim key benefits following their NINo registration in the UK.

The DWP NINo data does not show when overseas nationals subsequently depart the UK, nor does it show length of stay in the UK. The DWP figures are therefore a measure of inflow of overseas nationals registering for a NINo. It does not measure outflow or overall stock of overseas nationals in the UK.

The definition of migrants in this publication – adult overseas nationals allocated a NINo – differs from other published statistics in the area, such as International Migration statistics derived from the International Passenger Survey (IPS), and statistics on foreign workers derived from the Labour Force Survey (LFS). The various definitions of migrants mean the data sources may have different numbers of migrants for the same time period.

The figures reflect adult overseas nationals allocated a NINo through the adult registration process. In addition there will be a small number of overseas nationals (aged 16-19 yrs) allocated a NINo automatically through the Juvenile Registration scheme. This occurs when the individual has previously been allocated a child registration number. These juvenile cases are not captured by the statistics.

#### Other statistics on migration

The Migration Statistics Quarterly Report provides a comprehensive picture of the various sources of migration statistics available and analysis of trends and includes headline NINo statistics.

<http://www.statistics.gov.uk/statbase/Product.asp?vInk=15230>