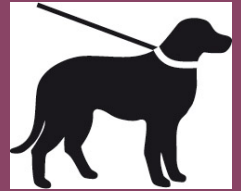


NATURAL
ENGLAND

KEEP DOGS ON A SHORT LEAD

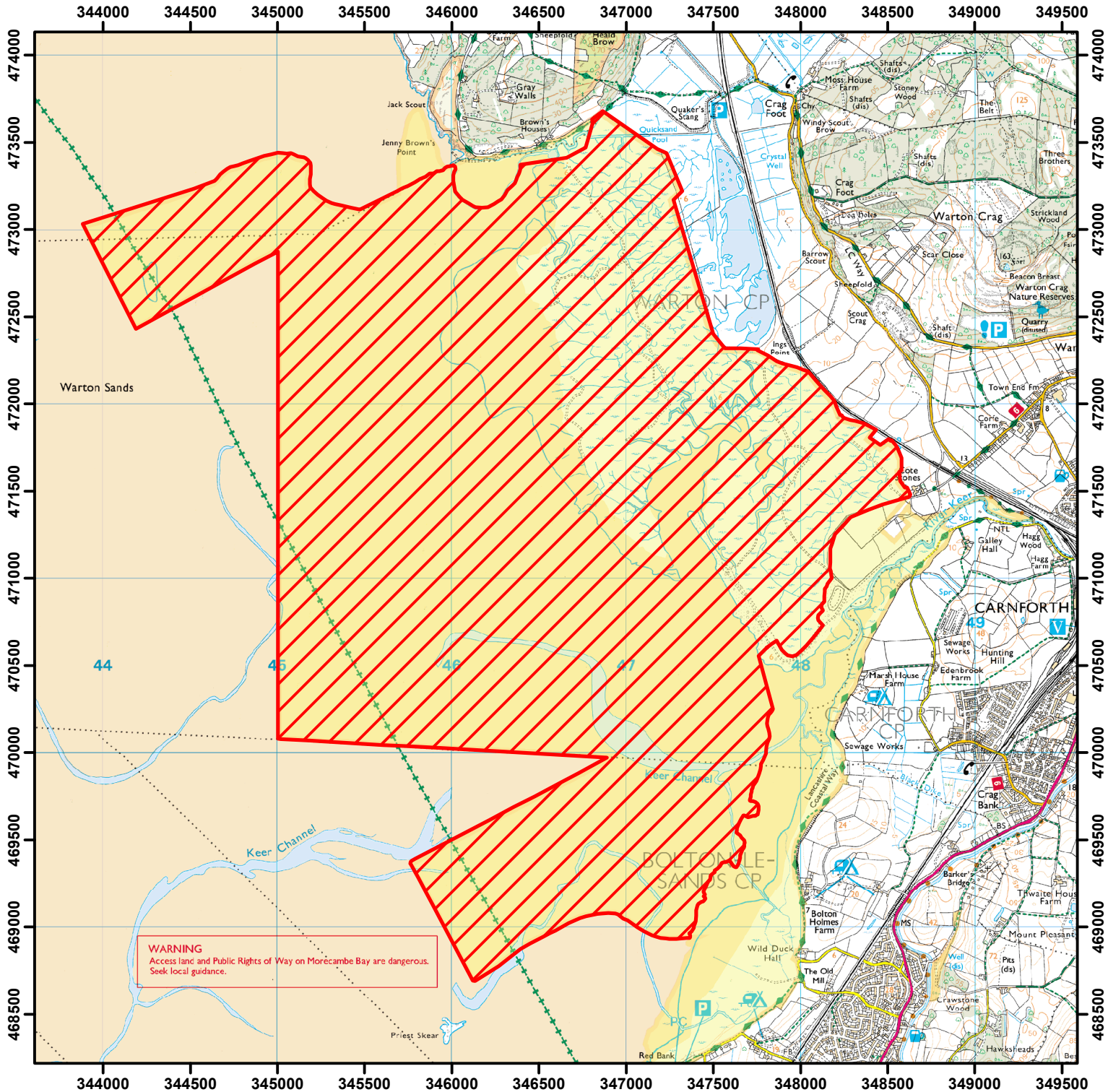
To protect sensitive wildlife, dogs must be kept on a short lead on the open access land shown hatched on the map below.

This does not affect public rights of way where dogs must be kept under close control.





Between: 1 August and 31 October until 2020

Case Number: 2014107401



0 250 500 1,000 1,500 2,000 Metres

© Crown Copyright and database right 2014. All rights reserved.
Ordnance Survey Licence number 100022021.

 **Restricted Open Access Land**
 **Open Access Land**



For more information call the Open Access Contact Centre on 0845 100 3298
or visit our website at www.naturalengland.org.uk/openaccess