



Ministry
of Defence

Monthly Op HERRICK UK Patient Treatment Statistics: RCDM and DMRC Headley Court 8 October 2007 – 31 August 2014

2 October 2014

Issued By:

Defence Statistics (Health)
Abbey Wood (North)
Oak 0 West #6028
Bristol
BS34 8JH

Enquiries

Press Office:
020 721 83253

Statistical Enquiries:

Head of Health
Tel: 03067984423
Fax: 0117 9319632
DefStrat-Stat-Health-PQ-FOI@mod.uk

Internet:

<https://www.gov.uk/government/organisations/ministry-of-defence/about/statistics>

Feedback is Welcome

If you have any comments or questions about this publication or about Defence Statistics in general, you can contact us as follows:

E-mail:

DefStrat-Stat-Enquiries-Mailbox@mod.uk

Would you like to be added to our contact list, so that we can inform you about updates to these statistics and consult you if we are thinking of making changes? You can subscribe to updates by emailing:

DefStrat-Stat-Health-PQ-FOI@mod.uk

INTRODUCTION

1. This report provides statistical information on UK Armed Forces and Civilian personnel returned to the UK from Op HERRICK as a result of an injury or illness who have been treated at the Royal Centre for Defence Medicine (RCDM) and/or the Defence Medical Rehabilitation Centre (DMRC) Headley Court. This report covers the time period 8 October 2007 – 31 August 2014.

2. This report has been provided in response to a number of requests for information about the number of UK Service Personnel injured on Op HERRICK that are subsequently receiving treatment in hospital at RCDM or receiving rehabilitation at DMRC, Headley Court. Publishing this information monthly provides accurate and timely information to interested parties.

KEY POINTS

3. During the period 8 October 2007 to 31 August 2014 the total number of new patients treated at RCDM or DMRC for injuries or illnesses sustained on Op HERRICK was 3,152 and 1,355 respectively.

4. In **August 2014** there were 118 patients from Op HERRICK treated at either RCDM or DMRC (89 were Battle Injuries, 13 were Non Battle Injuries and 16 were Natural Causes). Of these, 15 were new patients who had not previously been treated at RCDM or DMRC for their injury or illness (six were Battle Injuries, four were Non Battle Injuries and five were for Natural Causes).

5. The number of UK Armed Forces and civilian Personnel who were receiving treatment for the first time at RCDM or DMRC as a result of an injury or illness sustained on Operations in Afghanistan peaked in July 2009 and July 2010, at 105 and 103 respectively. This coincides with periods of high operational intensity.

6. The number of UK personnel receiving treatment for the first time at RCDM or DMRC began to fall from July 2010. This was largely due to a reduction in operational tempo of UK Service personnel as responsibility for security transitions to the Afghanistan National Security Force (ANSF), and a reduction in the numbers of UK Service personnel deploying to Afghanistan.

7. The number of UK personnel receiving treatment at RCDM or DMRC as a result of an injury or illness sustained on Operations in Afghanistan represents the numbers of patients requiring long-term treatment coupled with new patients. These numbers peaked in 2010 and has remained high due to the long-term treatment required by patients injured in periods of high operational intensity.

DATA, DEFINITIONS AND METHODS

8. Data are compiled by Defence Statistics from the Defence Patient Tracking System (DPTS) which commenced on 8 October 2007. The DPTS was set up to enable the capture of tracking data for aeromedically evacuated patients at the place where healthcare is being delivered along the care pathway. Patients receiving treatment that were aeromedically evacuated prior to this date may not be included. Since October 2008, the figures presented include Armed Forces personnel that have returned on routine flights and subsequently been referred to DMRC for an operational-related injury or illness.

9. The DPTS is not a medical or welfare record system; medical records are held on the Defence Medical Information Capability Programme; welfare records are held in single Service welfare databases. The DPTS is not an authoritative record of personnel and demographic details, these details are held on Joint Personnel Administration system.

10. The DPTS is a live system that is constantly being updated. Data for 2013/14 and 2014/15 are provisional and subject to change. Data for 2007/08 – 2012/13 have been finalised and are no longer provisional. The data for this report was extracted on 22 September 2014. Any amendments since the last release have been highlighted by an 'r'.

11. In many cases totals presented within tables will be less than the sum of their parts. This is for a number of reasons:

- Patients may be treated as an in-patient and as an out-patient (or also as a residential patient at DMRC) within the same location during the same time period. However, these patients will only be counted once in 'All RCDM' and 'All DMRC' totals within each time period.
- Patients may be treated at both RCDM and DMRC within the same time period. However, these patients will only be counted once in the 'Number of patients seen at RCDM & DMRC' totals within each time period.
- Patients may receive treatment at RCDM or DMRC that lasts longer than one month. These patients will appear in the tables for each month that they are at that location but will only appear once in the overall total for the whole time period.
- Patients may attend both RCDM and DMRC for their injury or illness. New patients are counted within the time period that they attended their first appointment at either of these locations. For example, during February 2012 there was one patient from Op HERRICK treated for the first time at RCDM for a Non Battle Injury (**Annex A**). This patient, however, was first treated at DMRC prior to February 2012. Therefore they are not accounted for in the 'New patients at RCDM or DMRC' in February 2012 but appear in the 'New patients at RCDM' figure for a Non Battle Injury in February 2012.

12. These statistics do not represent patient burden at RCDM or DMRC since they only include patients returned from deployment in Op HERRICK. These statistics do not represent numbers treated at any point in time, they only provide the numbers treated during a given month or year.

13. These statistics currently include RCDM and DMRC patients as these are the main facilities for treatment for patients aeromedically evacuated from theatre.

14. Since 2001, the Royal Centre for Defence Medicine (RCDM), based at the University Hospital Birmingham Foundation Trust (UHBFT), has been the main receiving unit for military casualties evacuated from an operational theatre. In the Birmingham area, military patients can benefit from the concentration of five specialist hospitals (including the Queen Elizabeth Hospital) to receive the appropriate treatment. The Queen Elizabeth Hospital is at the leading edge in the medical care of the most common types of injuries (e.g. polytrauma) our casualties sustain, and the majority of casualties will be treated there, but others may be transferred to another hospital (in Birmingham or elsewhere) if that is where the best medical care can be given.

15. If military patients require further rehabilitation care following initial hospital treatment, they may be referred to the Defence Medical Rehabilitation Centre (DMRC) at Headley Court in Surrey, which provides advanced rehabilitation and includes inpatient facilities. Less serious cases may go on to one of MOD's 15 Regional Rehabilitation Units (RRUs) in the UK and Germany, which provide accessible, regionally based assessment and treatment, including physiotherapy and group rehabilitation facilities. Treatment statistics for the RRUs are not included in this report.

16. Operation HERRICK is the name for UK operations in Afghanistan which started in April 2006. UK Forces are deployed to Afghanistan in support of the UN authorised, NATO led International Security Assistance Force (ISAF) mission.

FINDINGS

17. **Table 1** presents the number of Op HERRICK patients treated at the Royal Centre for Defence Medicine (RCDM) and the Defence Medical Rehabilitation Centre Headley Court (DMRC) during the time period 8 October 2007 – 31 August 2014. Treatment statistics for 2007/08 (8 October 2007 – 31 March 2008) and 2008/09 to 2013/14 are presented annually with detailed monthly breakdowns presented at **Annex A**. Treatment Statistics for 2014/15 (1 April 2014 - 31 August 2014) are presented by month.

Table 1: Op HERRICK patients¹ receiving treatment at Royal Centre for Defence Medicine and Defence Medical Rehabilitation Centre, 8 October 2007 – 31 August 2014, Number

| Financial Year | Injury Class ⁴ | RCDM Birmingham ² | | | DMRC Headley Court ² | | | Residential Patient | No. of patients seen at RCDM and/or DMRC | New Patients ³ | | |
|----------------------------|---------------------------|------------------------------|------------|-------------|---------------------------------|------------|-------------|---------------------|--|---------------------------|------|------|
| | | All RCDM Afghanistan | In-Patient | Out-patient | All DMRC Afghanistan | In-Patient | Out-patient | | | RCDM or DMRC | RCDM | DMRC |
| 8 October 07 - 31 March 08 | All | 166 | 125 | 64 | 115 | 55 | 62 | 45 | 256 | 149 | 143 | 27 |
| | Battle Injury | 70 | 57 | 25 | 84 | 45 | 44 | 31 | 132 | 58 | 56 | 23 |
| | Non Battle Injury | 56 | 35 | 29 | 30 | 10 | 17 | 13 | 83 | 52 | 48 | 4 |
| | Natural Causes | 40 | 33 | 10 | 1 | 0 | 1 | 1 | 41 | 39 | 39 | 0 |
| 2008/09 | All | 540 | 385 | 299 | 211 | 107 | 135 | 74 | 643 | 493 | 477 | 116 |
| | Battle Injury | 217 | 184 | 110 | 163 | 99 | 97 | 55 | 284 | 180 | 177 | 91 |
| | Non Battle Injury | 168 | 79 | 130 | 42 | 8 | 32 | 16 | 199 | 159 | 149 | 21 |
| | Natural Causes | 155 | 122 | 59 | 6 | 0 | 6 | 3 | 160 | 154 | 151 | 4 |
| 2009/10 | All | 872 | 645 | 416 | 438 | 207 | 396 | 118 | 1,029 | 773 | 751 | 295 |
| | Battle Injury | 453 | 389 | 157 | 368 | 197 | 331 | 93 | 564 | 394 | 391 | 249 |
| | Non Battle Injury | 236 | 121 | 168 | 58 | 9 | 54 | 21 | 270 | 210 | 195 | 40 |
| | Natural Cause | 183 | 135 | 91 | 12 | 1 | 11 | 4 | 195 | 169 | 165 | 6 |
| 2010/11 | All | 853 | 616 | 412 | 655 | 262 | 613 | 170 | 1,146 | 722 | 676 | 363 |
| | Battle Injury | 480 | 398 | 206 | 551 | 253 | 513 | 140 | 700 | 361 | 341 | 307 |
| | Non Battle Injury | 196 | 95 | 126 | 82 | 6 | 78 | 26 | 256 | 190 | 169 | 44 |
| | Natural Cause | 177 | 123 | 80 | 22 | 3 | 22 | 4 | 190 | 171 | 166 | 12 |
| 2011/12 | All | 632 | 477 | 310 | 614 | 248 | 590 | 160 | 994 | 497 | 451 | 231 |
| | Battle Injury | 350 | 272 | 186 | 524 | 245 | 504 | 127 | 635 | 221 | 198 | 189 |
| | Non Battle Injury | 117 | 72 | 71 | 68 | 2 | 66 | 24 | 173 | 113 | 97 | 33 |
| | Natural Cause | 165 | 133 | 53 | 22 | 1 | 20 | 9 | 186 | 163 | 156 | 9 |
| 2012/13 | All | 537 | 394 | 243 | 587 | 235 | 559 | 155 | 915 | 451 | 398 | 192 |
| | Battle Injury | 281 | 217 | 130 | 493 | 226 | 471 | 128 | 587 | 195 | 170 | 143 |
| | Non Battle Injury | 117 | 73 | 66 | 67 | 8 | 61 | 23 | 166 | 116 | 97 | 36 |
| | Natural Cause | 139 | 104 | 47 | 27 | 1 | 27 | 4 | 162 | 140 | 131 | 13 |
| 2013/14 | All | 281 | 207 | 142 | 447 | 196 | 425 | 114 | 625 | 241 | 195 | 97 |
| | Battle Injury | 113 | 87 | 61 | 355 | 186 | 339 | 77 | 377 | 61 | 43 | 54 |
| | Non Battle Injury | 88 | 54 | 48 | 63 | 9 | 58 | 27 | 140 | 98 | 78 | 31 |
| | Natural Cause | 80 | 66 | 33 | 29 | 1 | 28 | 10 | 108 | 82 | 74 | 12 |
| 2014/15 | All | 103 | 60 | 58 | 249 | 105 | 231 | 33 | 318 | 82 | 61 | 34 |
| | Battle Injury | 40 | 21 | 24 | 197 | 96 | 184 | 18 | 208 | 23 | 9 | 22 |
| | Non Battle Injury | 36 | 19 | 24 | 33 | 7 | 28 | 9 | 64 | 34 | 31 | 8 |
| | Natural Cause | 27 | 20 | 10 | 19 | 2 | 19 | 6 | 46 | 25 | 21 | 4 |
| Apr-14 | All | 27 | 20 | 9 | 144 | 68 | 121 | 12 | 169 | 20 | 14 | 8 |
| | Battle Injury | 11 | 7 | 5 | 119 | 64 | 102 | 7 | 126 | 3 | 1 | 4 |
| | Non Battle Injury | 10 | 8 | 3 | 17 | 3 | 12 | 3 | 28 | 11 | 9 | 2 |
| | Natural Causes | 6 | 5 | 1 | 8 | 1 | 7 | 2 | 15 | 6 | 4 | 2 |
| May-14 | All | 26 | 13 | 15 | 124 | 59 | 108 | 7 | 150 | 18 | 14 | 6 |
| | Battle Injury | 3 | 2 | 1 | 105 | 56 | 93 | 4 | 108 | 2 | 0 | 3 |
| | Non Battle Injury | 15 | 6 | 10 | 10 | 2 | 7 | 2 | 25 | 12 | 11 | 2 |
| | Natural Causes | 8 | 5 | 4 | 9 | 1 | 8 | 1 | 17 | 4 | 3 | 1 |
| Jun-14 | All | 18 | 7 | 13 | 136 | 67 | 120 | 7 | 150 | 15 | 7 | 11 |
| | Battle Injury | 7 | 3 | 5 | 115 | 63 | 105 | 3 | 118 | 8 | 1 | 8 |
| | Non Battle Injury | 7 | 3 | 5 | 15 | 3 | 11 | 2 | 22 | 3 | 3 | 2 |
| | Natural Causes | 4 | 1 | 3 | 6 | 1 | 4 | 2 | 10 | 4 | 3 | 1 |
| Jul-14 | All | 31 | 14 | 17 | 107 | 55 | 89 | 11 | 130 | 14 | 13 | 3 |
| | Battle Injury | 16 | 5 | 11 | 84 | 51 | 71 | 4 | 92 | 4 | 3 | 2 |
| | Non Battle Injury | 8 | 3 | 5 | 14 | 3 | 11 | 4 | 22 | 4 | 4 | 1 |
| | Natural Causes | 7 | 6 | 1 | 9 | 1 | 7 | 3 | 16 | 6 | 6 | 0 |
| Aug-14 | All | 26 | 16 | 10 | 94 | 43 | 80 | 6 | 118 | 15 | 13 | 6 |
| | Battle Injury | 14 | 9 | 5 | 77 | 37 | 68 | 4 | 89 | 6 | 4 | 5 |
| | Non Battle Injury | 5 | 2 | 3 | 8 | 4 | 4 | 1 | 13 | 4 | 4 | 1 |
| | Natural Causes | 7 | 5 | 2 | 9 | 2 | 8 | 1 | 16 | 5 | 5 | 0 |

Source: Defence Patient Tracking System (DPTS)

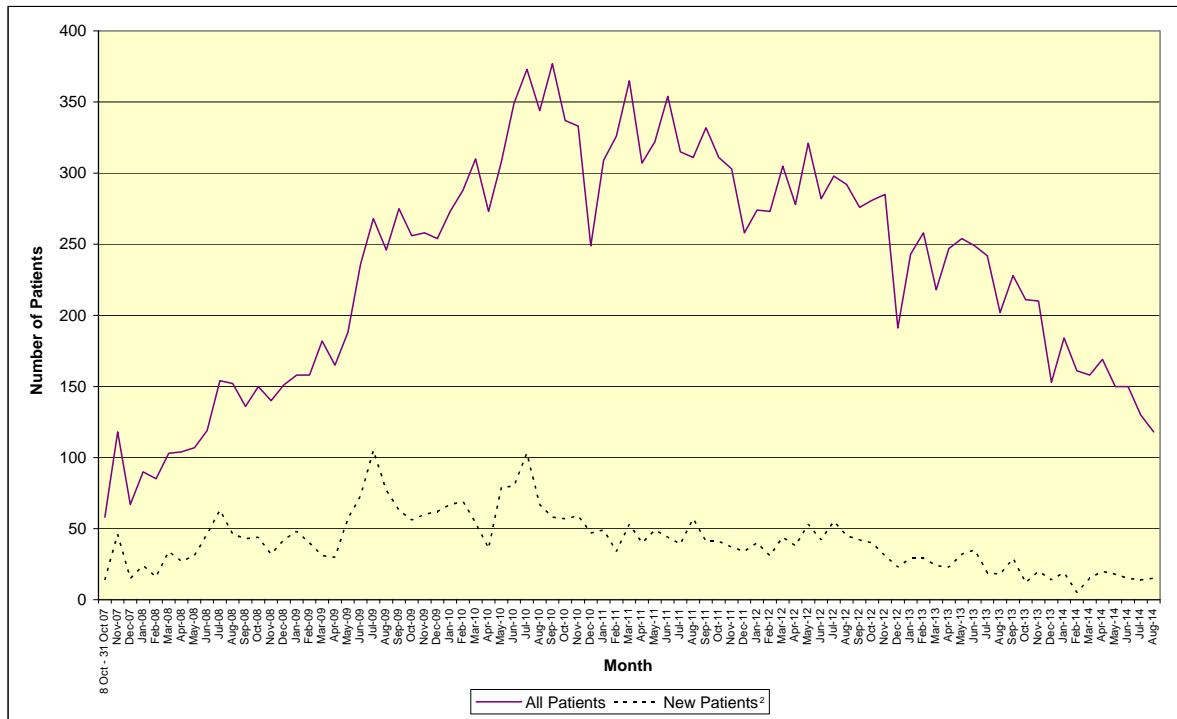
1. Patients include Naval Service Personnel, Army Personnel including those from the Gibraltar Regiment, RAF Personnel, Reservists and UK Civilians. These exclude Other Nations Service Personnel.
2. An in-patient is a patient that has been admitted and allocated a ward bed. A residential patient is a patient that is on a three week rehab course; they are not allocated a ward bed, but reside in dormitory style accommodation. An outpatient is a non-resident patient attending RCDM or DMRC for treatment.
3. Patients treated at RCDM and or DMRC are considered new patients during the time period that they are first treated at these locations within their care pathway. For example, a patient treated for the first time at RCDM in January 2010 and subsequently treated for the first time at DMRC in March 2010 for the same injury/illness will be included in the January 2010 New patients figures under 'RCDM or DMRC' only
4. A battle injury includes those wounded as a result of hostile action. This includes injuries sustained whilst avoiding direct and indirect fire. A non-battle injury is any injury that is not caused by a hostile act and includes any accidental injuries such as sports injuries, road traffic accidents etc. Natural cause includes illness, disease and pregnancy. The distinctions between Battle Injury, Non Battle Injury and Natural cause have been validated against operational casualty data where possible (Annex B).

18. During the period 8 October 2007 to 31 August 2014 the number of patients from Op HERRICK treated at RCDM was 3,218. This figure includes patients who received treatment prior to the start of the Defence Patient Tracking System (DPTS) which commenced on 8 October 2007. Of these 3,152 were new patients who had not been treated at RCDM for their injury or illness prior to 8 October 2007.

19. During the period 8 October 2007 to 31 August 2014 the number of patients from Op HERRICK treated at DMRC was 1,464. This figure includes patients who received treatment prior to the start of the Defence Patient Tracking System (DPTS) which commenced on 8 October 2007. Of these 1,355 were new patients who had not been treated at DMRC for their injury or illness prior to 8 October 2007.

20. **Figure 1** presents the number of Op HERRICK patients treated at the Royal Centre for Defence Medicine (RCDM) and the Defence Medical Rehabilitation Centre Headley Court (DMRC) during the time period 8 October 2007 – 31 August 2014 by month.

Figure 1: Op HERRICK patients¹ receiving treatment at Royal Centre for Defence Medicine or Defence Medical Rehabilitation Centre, 8 October 2007 – 31 August 2014, Number



Source: Defence Patient Tracking System (DPTS)

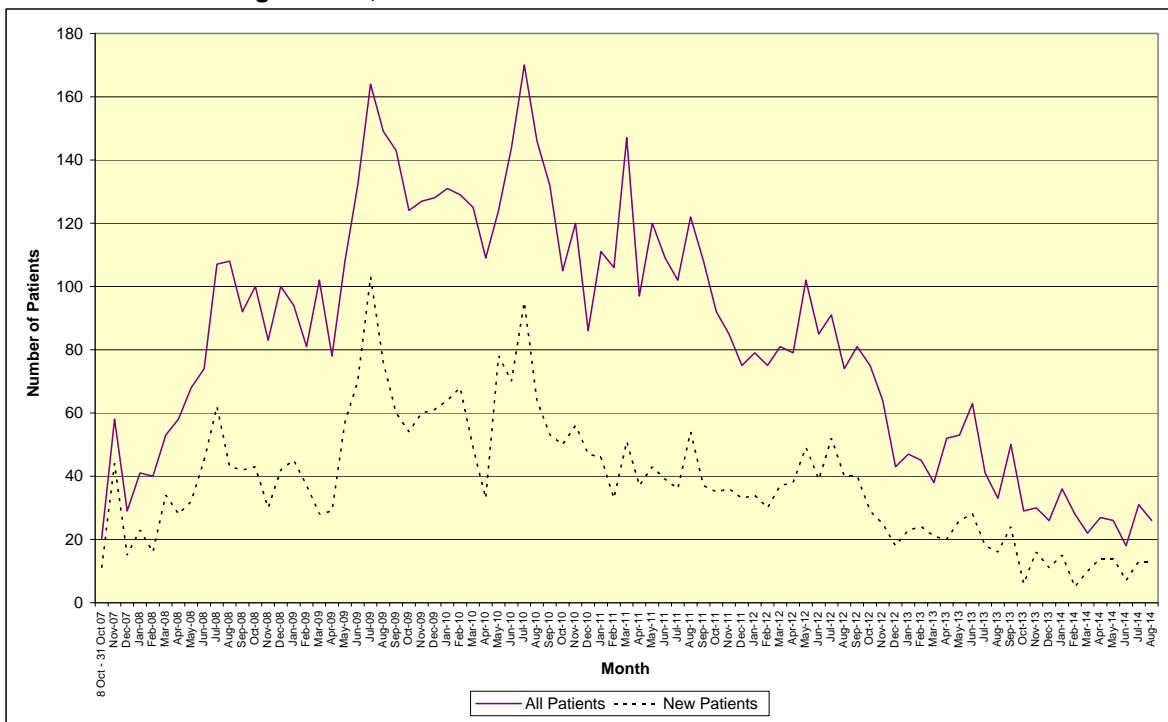
1. Patients include Naval Service Personnel, Army Personnel including those from the Gibraltar Regiment, RAF Personnel, Reservists and UK Civilians. These exclude Other Nations Service Personnel.
2. Patients treated at RCDM and or DMRC are considered new patients during the time period that they are first treated at these locations within their care pathway. For example, a patient treated for the first time at RCDM in January 2010 and subsequently treated for the first time at DMRC in March 2010 for the same injury/illness will be included in the January 2010 New patients figures under 'RCDM or DMRC' only

21. The number of UK Armed Forces and civilian Personnel who were receiving treatment for the first time (New Patients) at RCDM or DMRC as a result of an injury or illness sustained on Operations in Afghanistan peaked in summer 2009 and summer 2010. This coincides with periods of high operational intensity. The number of UK personnel receiving treatment for the first time at RCDM or DMRC began to fall from July 2010. This was largely due to a reduction in operational tempo of UK Service personnel as responsibility for security transitions to the Afghanistan National Security Force (ANSF), and a reduction in the numbers of UK Service personnel deploying to Afghanistan.

22. The number of UK personnel who were receiving treatment at RCDM or DMRC as a result of an injury or illness sustained on Operations in Afghanistan represents the numbers of patients requiring long-term treatment coupled with new patients (All Patients). These numbers peaked in 2010 and 2011 (rather than in 2009 and 2010) due to the long-term treatment required by patients injured in periods of high operational intensity. The dips seen in the data around December each year represent the drop in patients being treated around the festive period. Fewer clinics are run and patients who wish to, and are able to, spend time with their family are discharged over this period.

23. **Figure 2** presents the number of Op HERRICK patients treated at the Royal Centre for Defence Medicine (RCDM) during the time period 8 October 2007 – 31 August 2014 by month.

Figure 2: Op HERRICK patients¹ receiving treatment at Royal Centre for Defence Medicine, 8 October 2007 – 31 August 2014, Number



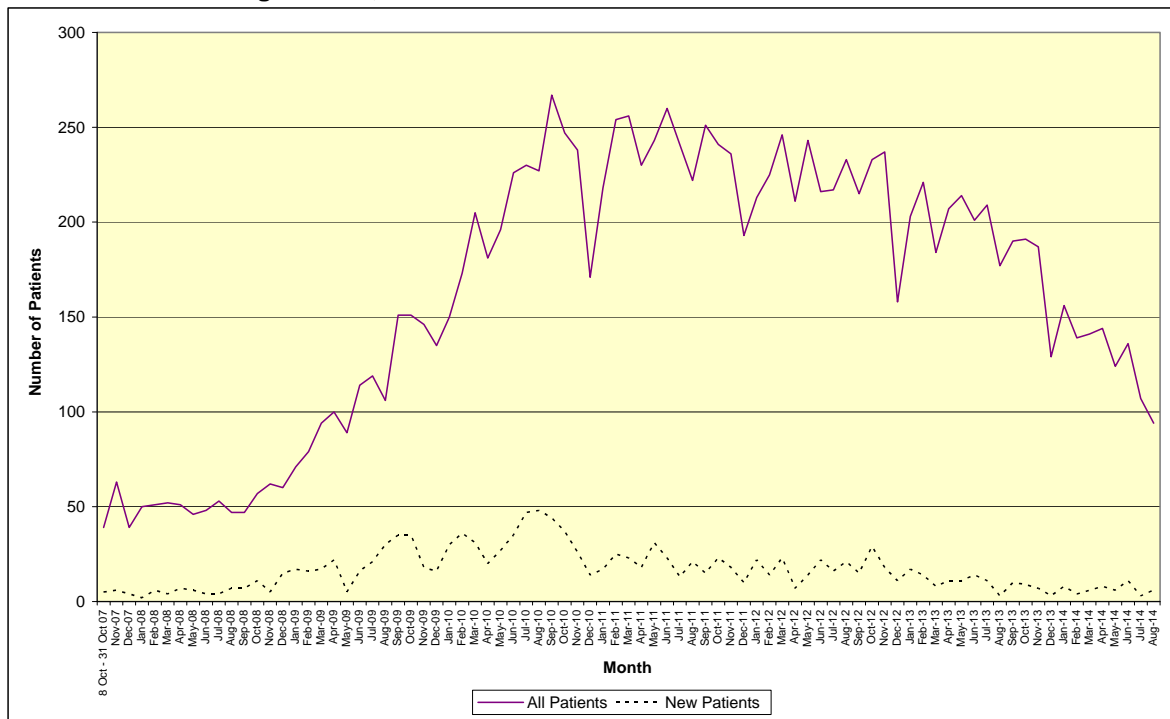
Source: Defence Patient Tracking System (DPTS)

1. Patients include Naval Service Personnel, Army Personnel including those from the Gibraltar Regiment, RAF Personnel, Reservists and UK Civilians. These exclude Other Nations Service Personnel.

24. The number of UK Armed Forces and civilian Personnel who were receiving treatment for the first time (New Patients) at RCDM as a result of an injury or illness sustained on Operations in Afghanistan peaked in summer 2009 and summer 2010. This coincides with periods of high operational intensity. The number of UK personnel receiving treatment for the first time at RCDM began to fall from July 2010. This was largely due to a reduction in operational tempo of UK Service personnel as responsibility for security transitioned to the Afghanistan National Security Force (ANSF), and a reduction in the numbers of UK Service personnel deploying to Afghanistan.

25. **Figure 3** presents the number of Op HERRICK patients treated at the Defence Medical Rehabilitation Centre Headley Court (DMRC) during the time period 8 October 2007 – 31 August 2014 month.

Figure 3: Op HERRICK patients¹ receiving treatment at Defence Medical Rehabilitation Centre, 8 October 2007 – 31 August 2014, Number



Source: Defence Patient Tracking System (DPTS)

1. Patients include Naval Service Personnel, Army Personnel including those from the Gibraltar Regiment, RAF Personnel, Reservists and UK Civilians. These exclude Other Nations Service Personnel.

26. The number of UK Armed Forces and civilian Personnel who were receiving treatment for the first time (New Patients) at DMRC as a result of an injury or illness sustained on Operations in Afghanistan peaked in summer 2010 despite the peak in Operations in 2009 and 2010. This is because the majority of patients were treated at RCDM before being referred to DMRC. The number of new patients reduced in the later half of 2010 but then remained stable until January 2013. From January 2013 onwards the number of patients treated has declined.

27. The number of UK personnel who were receiving treatment at DMRC as a result of an injury or illness sustained on Operations in Afghanistan represents the numbers of patients requiring long-term treatment coupled with new patients (All Patients). The number of patients receiving treatment peaked in September 2010 and has remained high due to the long-term treatment required by patients injured in periods of high operational intensity. From January 2013 the numbers of patients receiving treatment started to decline. The dips seen in the data around December each year represent the drop in patients being treated around the festive period. Fewer clinics are run and patients who wish to, and are able to, spend time with their family are discharged over this period.

ANNEX A

Table A1: Op HERRICK patients¹ receiving treatment at RCDM and DMRC by month, 8 October 2007 - 31 March 2008, Number

| Financial Year | Injury Class ⁴ | RCDM Birmingham ² | | | DMRC Headley Court ² | | | | No. of patients seen at RCDM and/or DMRC | New Patients ³ | | |
|----------------------------|---------------------------|------------------------------|------------|-------------|---------------------------------|------------|-------------|---------------------|--|---------------------------|------|------|
| | | All RCDM Afghanistan | In-Patient | Out-patient | All DMRC Afghanistan | In-Patient | Out-patient | Residential Patient | | RCDM or DMRC | RCDM | DMRC |
| 8 October 07 - 31 March 08 | All | 166 | 125 | 64 | 115 | 55 | 62 | 45 | 256 | 149 | 143 | 27 |
| | Battle Injury | 70 | 57 | 25 | 84 | 45 | 44 | 31 | 132 | 58 | 56 | 23 |
| | Non Battle Injury | 56 | 35 | 29 | 30 | 10 | 17 | 13 | 83 | 52 | 48 | 4 |
| | Natural Causes | 40 | 33 | 10 | 1 | 0 | 1 | 1 | 41 | 39 | 39 | 0 |
| 8 Oct - 31 Oct 07 | All | 20 | 12 | 10 | 39 | 12 | 12 | 15 | 58 | 14 | 11 | 5 |
| | Battle Injury | 6 | 4 | 3 | 28 | 11 | 6 | 11 | 33 | 2 | 2 | 3 |
| | Non Battle Injury | 10 | 5 | 6 | 11 | 1 | 6 | 4 | 21 | 8 | 5 | 2 |
| | Natural Causes | 4 | 3 | 1 | 0 | 0 | 0 | 0 | 4 | 4 | 4 | 0 |
| Nov-07 | All | 58 | 42 | 16 | 63 | 32 | 12 | 21 | 118 | 46 | 44 | 6 |
| | Battle Injury | 28 | 21 | 7 | 44 | 27 | 6 | 13 | 69 | 21 | 21 | 5 |
| | Non Battle Injury | 17 | 12 | 5 | 18 | 5 | 5 | 8 | 35 | 14 | 12 | 1 |
| | Natural Causes | 13 | 9 | 4 | 1 | 0 | 1 | 0 | 14 | 11 | 11 | 0 |
| Dec-07 | All | 29 | 20 | 10 | 39 | 21 | 7 | 11 | 67 | 15 | 15 | 4 |
| | Battle Injury | 16 | 13 | 4 | 26 | 16 | 5 | 5 | 41 | 7 | 7 | 4 |
| | Non Battle Injury | 8 | 3 | 5 | 13 | 5 | 2 | 6 | 21 | 4 | 4 | 0 |
| | Natural Causes | 5 | 4 | 1 | 0 | 0 | 0 | 0 | 5 | 4 | 4 | 0 |
| Jan-08 | All | 41 | 26 | 16 | 50 | 21 | 19 | 10 | 90 | 24 | 23 | 2 |
| | Battle Injury | 20 | 15 | 5 | 40 | 19 | 14 | 7 | 59 | 10 | 9 | 2 |
| | Non Battle Injury | 13 | 6 | 8 | 9 | 2 | 4 | 3 | 22 | 7 | 7 | 0 |
| | Natural Causes | 8 | 5 | 3 | 1 | 0 | 1 | 0 | 9 | 7 | 7 | 0 |
| Feb-08 | All | 40 | 27 | 16 | 51 | 22 | 16 | 16 | 85 | 16 | 16 | 6 |
| | Battle Injury | 23 | 16 | 9 | 43 | 21 | 12 | 13 | 60 | 6 | 6 | 5 |
| | Non Battle Injury | 11 | 6 | 6 | 7 | 1 | 4 | 2 | 18 | 7 | 7 | 1 |
| | Natural Causes | 6 | 5 | 1 | 1 | 0 | 0 | 1 | 7 | 3 | 3 | 0 |
| Mar-08 | All | 53 | 37 | 18 | 52 | 18 | 20 | 15 | 103 | 34 | 34 | 4 |
| | Battle Injury | 24 | 19 | 7 | 45 | 18 | 17 | 11 | 67 | 12 | 11 | 4 |
| | Non Battle Injury | 17 | 8 | 9 | 7 | 0 | 3 | 4 | 24 | 12 | 13 | 0 |
| | Natural Causes | 12 | 10 | 2 | 0 | 0 | 0 | 0 | 12 | 10 | 10 | 0 |

Source: Defence Patient Tracking System (DPTS)

1. Patients include Naval Service Personnel, Army Personnel including those from the Gibraltar Regiment, RAF Personnel, Reservists and UK Civilians. These exclude Other Nations Service Personnel.
2. An in-patient is a patient that has been admitted and allocated a ward bed. A residential patient is a patient that is on a three week rehab course; they are not allocated a ward bed, but reside in dormitory style accommodation. An outpatient is a non-resident patient attending RCDM or DMRC for treatment.
3. Patients treated at RCDM and or DMRC are considered new patients during the time period that they are first treated at these locations within their care pathway. For example, a patient treated for the first time at RCDM in January 2010 and subsequently treated for the first time at DMRC in March 2010 for the same injury/illness will be included in the January 2010 New patients figures under 'RCDM or DMRC' only
4. A battle injury includes those wounded as a result of hostile action. This includes injuries sustained whilst avoiding direct and indirect fire. A non-battle injury is any injury that is not caused by a hostile act and includes any accidental injuries such as sports injuries, road traffic accidents etc. Natural cause includes illness, disease and pregnancy. The distinctions between Battle Injury, Non Battle Injury and Natural cause have been validated against operational casualty data where possible (Annex B).

Table A2: Op HERRICK patients¹ receiving treatment at RCDM and DMRC by month, 1 April 2008 - 31 March 2009, Number

| Financial Year | Injury Class ⁴ | RCDM Birmingham ² | | | DMRC Headley Court ² | | | | No. of patients seen at RCDM and/or DMRC | New Patients ³ | | |
|--------------------------|---------------------------|------------------------------|------------|-------------|---------------------------------|------------|-------------|---------------------|--|---------------------------|------|------|
| | | All RCDM Afghanistan | In-Patient | Out-patient | All DMRC Afghanistan | In-Patient | Out-patient | Residential Patient | | RCDM or DMRC | RCDM | DMRC |
| 1 April 08 - 31 March 09 | All | 540 | 385 | 299 | 211 | 107 | 135 | 74 | 643 | 493 | 477 | 116 |
| | Battle Injury | 217 | 184 | 110 | 163 | 99 | 97 | 55 | 284 | 180 | 177 | 91 |
| | Non Battle Injury | 168 | 79 | 130 | 42 | 8 | 32 | 16 | 199 | 159 | 149 | 21 |
| | Natural Causes | 155 | 122 | 59 | 6 | 0 | 6 | 3 | 160 | 154 | 151 | 4 |
| Apr-08 | All | 58 | 34 | 27 | 51 | 27 | 15 | 12 | 104 | 27 | 28 | 7 |
| | Battle Injury | 27 | 17 | 11 | 44 | 26 | 11 | 10 | 67 | 5 | 5 | 7 |
| | Non Battle Injury | 18 | 8 | 12 | 7 | 1 | 4 | 2 | 24 | 11 | 12 | 0 |
| | Natural Causes | 13 | 9 | 4 | 0 | 0 | 0 | 0 | 13 | 11 | 11 | 0 |
| May-08 | All | 68 | 33 | 38 | 46 | 23 | 13 | 10 | 107 | 31 | 32 | 6 |
| | Battle Injury | 26 | 15 | 13 | 38 | 22 | 9 | 7 | 59 | 8 | 9 | 4 |
| | Non Battle Injury | 29 | 11 | 18 | 7 | 1 | 3 | 3 | 34 | 14 | 14 | 2 |
| | Natural Causes | 13 | 7 | 7 | 1 | 0 | 1 | 0 | 14 | 9 | 9 | 0 |
| Jun-08 | All | 74 | 38 | 39 | 48 | 20 | 11 | 17 | 119 | 46 | 45 | 4 |
| | Battle Injury | 25 | 12 | 14 | 40 | 18 | 9 | 13 | 62 | 7 | 7 | 3 |
| | Non Battle Injury | 26 | 12 | 16 | 8 | 2 | 2 | 4 | 34 | 18 | 17 | 1 |
| | Natural Causes | 23 | 14 | 9 | 0 | 0 | 0 | 0 | 23 | 21 | 21 | 0 |
| Jul-08 | All | 107 | 57 | 58 | 53 | 23 | 17 | 18 | 154 | 63 | 62 | 4 |
| | Battle Injury | 49 | 32 | 22 | 46 | 22 | 13 | 15 | 89 | 28 | 27 | 4 |
| | Non Battle Injury | 33 | 9 | 26 | 7 | 1 | 4 | 3 | 40 | 15 | 15 | 0 |
| | Natural Causes | 25 | 16 | 10 | 0 | 0 | 0 | 0 | 25 | 20 | 20 | 0 |
| Aug-08 | All | 108 | 50 | 65 | 47 | 24 | 10 | 13 | 152 | 46 | 43 | 7 |
| | Battle Injury | 49 | 28 | 27 | 41 | 22 | 7 | 12 | 87 | 17 | 16 | 5 |
| | Non Battle Injury | 36 | 9 | 28 | 5 | 2 | 2 | 1 | 41 | 14 | 13 | 1 |
| | Natural Causes | 23 | 13 | 10 | 1 | 0 | 1 | 0 | 24 | 15 | 14 | 1 |
| Sep-08 | All | 92 | 51 | 45 | 47 | 23 | 17 | 7 | 138 | 43 | 42 | 7 |
| | Battle Injury | 50 | 34 | 19 | 42 | 23 | 14 | 5 | 89 | 23 | 23 | 6 |
| | Non Battle Injury | 26 | 7 | 19 | 4 | 0 | 2 | 2 | 30 | 11 | 10 | 1 |
| | Natural Causes | 16 | 10 | 7 | 1 | 0 | 1 | 0 | 17 | 9 | 9 | 0 |
| Oct-08 | All | 100 | 45 | 57 | 57 | 31 | 15 | 13 | 150 | 44 | 43 | 11 |
| | Battle Injury | 51 | 27 | 25 | 49 | 29 | 11 | 11 | 94 | 16 | 16 | 8 |
| | Non Battle Injury | 30 | 6 | 25 | 8 | 2 | 4 | 2 | 37 | 16 | 15 | 3 |
| | Natural Causes | 19 | 12 | 7 | 0 | 0 | 0 | 0 | 19 | 12 | 12 | 0 |
| Nov-08 | All | 83 | 53 | 35 | 62 | 32 | 20 | 17 | 140 | 32 | 30 | 5 |
| | Battle Injury | 47 | 33 | 18 | 52 | 28 | 19 | 11 | 95 | 14 | 14 | 1 |
| | Non Battle Injury | 22 | 8 | 14 | 10 | 4 | 1 | 6 | 31 | 9 | 7 | 4 |
| | Natural Causes | 14 | 12 | 3 | 0 | 0 | 0 | 0 | 14 | 9 | 9 | 0 |
| Dec-08 | All | 100 | 53 | 52 | 60 | 36 | 17 | 7 | 151 | 42 | 42 | 15 |
| | Battle Injury | 54 | 38 | 19 | 52 | 33 | 16 | 3 | 97 | 18 | 18 | 14 |
| | Non Battle Injury | 26 | 5 | 21 | 8 | 3 | 1 | 4 | 34 | 12 | 12 | 1 |
| | Natural Causes | 20 | 10 | 12 | 0 | 0 | 0 | 0 | 20 | 12 | 12 | 0 |
| Jan-09 | All | 94 | 52 | 47 | 71 | 32 | 27 | 12 | 158 | 48 | 45 | 17 |
| | Battle Injury | 42 | 29 | 14 | 61 | 30 | 20 | 11 | 96 | 16 | 16 | 13 |
| | Non Battle Injury | 33 | 9 | 26 | 8 | 2 | 5 | 1 | 41 | 16 | 14 | 3 |
| | Natural Causes | 19 | 14 | 7 | 2 | 0 | 2 | 0 | 21 | 16 | 15 | 1 |
| Feb-09 | All | 81 | 46 | 38 | 79 | 34 | 34 | 14 | 158 | 40 | 37 | 16 |
| | Battle Injury | 40 | 30 | 11 | 65 | 33 | 26 | 8 | 103 | 19 | 18 | 12 |
| | Non Battle Injury | 24 | 6 | 20 | 11 | 1 | 5 | 5 | 35 | 12 | 11 | 2 |
| | Natural Causes | 17 | 10 | 7 | 3 | 0 | 3 | 1 | 20 | 9 | 8 | 2 |
| Mar-09 | All | 102 | 51 | 56 | 94 | 51 | 42 | 11 | 182 | 31 | 28 | 17 |
| | Battle Injury | 50 | 32 | 21 | 81 | 50 | 32 | 7 | 118 | 9 | 8 | 14 |
| | Non Battle Injury | 33 | 9 | 26 | 10 | 1 | 8 | 1 | 42 | 11 | 9 | 3 |
| | Natural Cause | 19 | 10 | 9 | 3 | 0 | 2 | 3 | 22 | 11 | 11 | 0 |

Source: Defence Patient Tracking System (DPTS)

1. Patients include Naval Service Personnel, Army Personnel including those from the Gibraltar Regiment, RAF Personnel, Reservists and UK Civilians. These exclude Other Nations Service Personnel.
2. An in-patient is a patient that has been admitted and allocated a ward bed. A residential patient is a patient that is on a three week rehab course; they are not allocated a ward bed, but reside in dormitory style accommodation. An outpatient is a non-resident patient attending RCDM or DMRC for treatment.
3. Patients treated at RCDM and or DMRC are considered new patients during the time period that they are first treated at these locations within their care pathway. For example, a patient treated for the first time at RCDM in January 2010 and subsequently treated for the first time at DMRC in March 2010 for the same injury/illness will be included in the January 2010 New patients figures under 'RCDM or DMRC' only
4. A battle injury includes those wounded as a result of hostile action. This includes injuries sustained whilst avoiding direct and indirect fire. A non-battle injury is any injury that is not caused by a hostile act and includes any accidental injuries such as sports injuries, road traffic accidents etc. Natural cause includes illness, disease and pregnancy. The distinctions between Battle Injury, Non Battle Injury and Natural cause have been validated against operational casualty data where possible (Annex B).

Table A3: Op HERRICK patients¹ receiving treatment at RCDM and DMRC by month, 1 April 2009 - 31 March 2010, Number

| Financial Year | Injury Class ⁴ | RCDM Birmingham ² | | | DMRC Headley Court ² | | | | No. of patients seen at RCDM and/or DMRC | New Patients ³ | | |
|--------------------------|---------------------------|------------------------------|------------|-------------|---------------------------------|------------|-------------|---------------------|--|---------------------------|------|------|
| | | All RCDM Afghanistan | In-Patient | Out-patient | All DMRC Afghanistan | In-Patient | Out-patient | Residential Patient | | RCDM or DMRC | RCDM | DMRC |
| 1 April 09 - 31 March 10 | All | 872 | 645 | 416 | 438 | 207 | 396 | 118 | 1,029 | 773 | 751 | 295 |
| | Battle Injury | 453 | 389 | 157 | 368 | 197 | 331 | 93 | 564 | 394 | 391 | 249 |
| | Non Battle Injury | 236 | 121 | 168 | 58 | 9 | 54 | 21 | 270 | 210 | 195 | 40 |
| | Natural Cause | 163 | 135 | 91 | 12 | 1 | 11 | 4 | 195 | 169 | 165 | 6 |
| Apr-09 | All | 78 | 40 | 43 | 100 | 50 | 49 | 18 | 165 | 30 | 29 | 22 |
| | Battle Injury | 38 | 21 | 18 | 84 | 49 | 38 | 13 | 109 | 7 | 7 | 19 |
| | Non Battle Injury | 28 | 12 | 20 | 13 | 1 | 9 | 4 | 41 | 17 | 16 | 2 |
| | Natural Cause | 12 | 7 | 5 | 3 | 0 | 2 | 1 | 15 | 6 | 6 | 1 |
| May-09 | All | 108 | 66 | 48 | 89 | 49 | 51 | 14 | 188 | 57 | 57 | 5 |
| | Battle Injury | 40 | 34 | 6 | 80 | 49 | 44 | 11 | 112 | 16 | 16 | 4 |
| | Non Battle Injury | 44 | 15 | 31 | 8 | 0 | 7 | 2 | 51 | 23 | 23 | 1 |
| | Natural Cause | 24 | 17 | 11 | 1 | 0 | 0 | 1 | 25 | 18 | 18 | 0 |
| Jun-09 | All | 132 | 73 | 68 | 114 | 55 | 79 | 18 | 236 | 73 | 70 | 16 |
| | Battle Injury | 58 | 43 | 18 | 92 | 52 | 64 | 12 | 142 | 30 | 30 | 9 |
| | Non Battle Injury | 46 | 15 | 33 | 17 | 3 | 11 | 4 | 61 | 24 | 21 | 7 |
| | Natural Cause | 28 | 15 | 17 | 5 | 0 | 4 | 2 | 33 | 19 | 19 | 0 |
| Jul-09 | All | 164 | 113 | 65 | 119 | 52 | 78 | 16 | 268 | 105 | 103 | 21 |
| | Battle Injury | 88 | 74 | 21 | 103 | 50 | 69 | 10 | 179 | 61 | 61 | 17 |
| | Non Battle Injury | 44 | 20 | 28 | 14 | 2 | 7 | 6 | 55 | 21 | 19 | 4 |
| | Natural Cause | 32 | 19 | 16 | 2 | 0 | 2 | 0 | 34 | 23 | 23 | 0 |
| Aug-09 | All | 149 | 100 | 52 | 106 | 49 | 62 | 18 | 246 | 77 | 76 | 30 |
| | Battle Injury | 86 | 70 | 18 | 94 | 48 | 58 | 11 | 171 | 41 | 41 | 29 |
| | Non Battle Injury | 37 | 18 | 20 | 11 | 1 | 4 | 6 | 48 | 22 | 21 | 1 |
| | Natural Cause | 26 | 12 | 14 | 1 | 0 | 0 | 1 | 27 | 14 | 14 | 0 |
| Sep-09 | All | 143 | 90 | 61 | 151 | 64 | 97 | 27 | 275 | 63 | 60 | 35 |
| | Battle Injury | 85 | 67 | 23 | 127 | 63 | 80 | 20 | 194 | 36 | 36 | 30 |
| | Non Battle Injury | 35 | 13 | 24 | 20 | 1 | 14 | 6 | 54 | 16 | 13 | 5 |
| | Natural Cause | 23 | 10 | 14 | 4 | 0 | 3 | 1 | 27 | 11 | 11 | 0 |
| Oct-09 | All | 124 | 84 | 47 | 151 | 69 | 105 | 24 | 256 | 56 | 54 | 35 |
| | Battle Injury | 80 | 62 | 22 | 135 | 66 | 94 | 20 | 197 | 32 | 31 | 30 |
| | Non Battle Injury | 20 | 5 | 16 | 15 | 3 | 10 | 4 | 34 | 8 | 7 | 5 |
| | Natural Causes | 24 | 17 | 9 | 1 | 0 | 1 | 0 | 25 | 16 | 16 | 0 |
| Nov-09 | All | 127 | 86 | 45 | 146 | 73 | 88 | 31 | 258 | 60 | 60 | 18 |
| | Battle Injury | 82 | 66 | 19 | 132 | 71 | 81 | 24 | 199 | 38 | 38 | 17 |
| | Non Battle Injury | 23 | 10 | 13 | 12 | 2 | 5 | 7 | 35 | 9 | 9 | 0 |
| | Natural Causes | 22 | 10 | 13 | 2 | 0 | 2 | 0 | 24 | 13 | 13 | 1 |
| Dec-09 | All | 128 | 90 | 43 | 135 | 59 | 96 | 17 | 254 | 62 | 61 | 16 |
| | Battle Injury | 84 | 68 | 20 | 123 | 58 | 89 | 13 | 198 | 40 | 40 | 15 |
| | Non Battle Injury | 31 | 15 | 17 | 9 | 1 | 4 | 4 | 40 | 14 | 14 | 0 |
| | Natural Causes | 13 | 7 | 6 | 3 | 0 | 3 | 0 | 16 | 8 | 7 | 1 |
| Jan-10 | All | 131 | 82 | 52 | 150 | 66 | 115 | 19 | 273 | 67 | 64 | 30 |
| | Battle Injury | 77 | 57 | 22 | 135 | 64 | 101 | 18 | 204 | 28 | 28 | 24 |
| | Non Battle Injury | 32 | 11 | 22 | 13 | 1 | 13 | 1 | 45 | 22 | 20 | 5 |
| | Natural Causes | 22 | 14 | 8 | 2 | 1 | 1 | 0 | 24 | 17 | 16 | 1 |
| Feb-10 | All | 129 | 93 | 41 | 173 | 71 | 119 | 34 | 288 | 69 | 68 | 36 |
| | Battle Injury | 78 | 64 | 16 | 154 | 69 | 105 | 30 | 219 | 35 | 35 | 29 |
| | Non Battle Injury | 30 | 13 | 19 | 16 | 1 | 13 | 3 | 45 | 19 | 18 | 7 |
| | Natural Causes | 21 | 16 | 6 | 3 | 1 | 1 | 1 | 24 | 15 | 15 | 0 |
| Mar-10 | All | 125 | 70 | 61 | 205 | 89 | 153 | 36 | 310 | 54 | 49 | 31 |
| | Battle Injury | 81 | 55 | 30 | 179 | 84 | 137 | 30 | 240 | 30 | 28 | 26 |
| | Non Battle Injury | 27 | 7 | 21 | 19 | 4 | 11 | 5 | 46 | 15 | 14 | 3 |
| | Natural Causes | 17 | 8 | 10 | 7 | 1 | 5 | 1 | 24 | 9 | 7 | 2 |

Source: Defence Patient Tracking System (DPTS)

1. Patients include Naval Service Personnel, Army Personnel including those from the Gibraltar Regiment, RAF Personnel, Reservists and UK Civilians. These exclude Other Nations Service Personnel.
2. An in-patient is a patient that has been admitted and allocated a ward bed. A residential patient is a patient that is on a three week rehab course; they are not allocated a ward bed, but reside in dormitory style accommodation. An outpatient is a non-resident patient attending RCDM or DMRC for treatment.
3. Patients treated at RCDM and or DMRC are considered new patients during the time period that they are first treated at these locations within their care pathway. For example, a patient treated for the first time at RCDM in January 2010 and subsequently treated for the first time at DMRC in March 2010 for the same injury/illness will be included in the January 2010 New patients figures under 'RCDM or DMRC' only
4. A battle injury includes those wounded as a result of hostile action. This includes injuries sustained whilst avoiding direct and indirect fire. A non-battle injury is any injury that is not caused by a hostile act and includes any accidental injuries such as sports injuries, road traffic accidents etc. Natural cause includes illness, disease and pregnancy. The distinctions between Battle Injury, Non Battle Injury and Natural cause have been validated against operational casualty data where possible (Annex B).

Table A4: Op HERRICK patients¹ receiving treatment at RCDM and DMRC by month, 1 April 2010 - 31 March 2011, Number

| Financial Year | Injury Class ⁴ | RCDM Birmingham ² | | | DMRC Headley Court ² | | | | No. of patients seen at RCDM and/or DMRC | New Patients ³ | | |
|--------------------------|---------------------------|------------------------------|------------|-------------|---------------------------------|------------|-------------|---------------------|--|---------------------------|------|------|
| | | All RCDM Afghanistan | In-Patient | Out-patient | All DMRC Afghanistan | In-Patient | Out-patient | Residential Patient | | RCDM or DMRC | RCDM | DMRC |
| 1 April 10 - 31 March 11 | All | 853 | 616 | 412 | 655 | 262 | 613 | 170 | 1,146 | 722 | 676 | 363 |
| | Battle Injury | 480 | 398 | 206 | 551 | 253 | 513 | 140 | 700 | 361 | 341 | 307 |
| | Non Battle Injury | 196 | 95 | 126 | 82 | 6 | 78 | 26 | 256 | 190 | 169 | 44 |
| | Natural Causes | 177 | 123 | 80 | 22 | 3 | 22 | 4 | 190 | 171 | 166 | 12 |
| Apr-10 | All | 109 | 69 | 51 | 181 | 92 | 130 | 26 | 273 | 36 | 33 | 20 |
| | Battle Injury | 72 | 53 | 27 | 160 | 86 | 117 | 20 | 215 | 13 | 12 | 17 |
| | Non Battle Injury | 25 | 9 | 19 | 18 | 5 | 11 | 5 | 43 | 13 | 11 | 3 |
| | Natural Causes | 12 | 7 | 5 | 3 | 1 | 2 | 1 | 15 | 10 | 10 | 0 |
| May-10 | All | 124 | 85 | 40 | 196 | 88 | 145 | 32 | 308 | 79 | 78 | 27 |
| | Battle Injury | 83 | 66 | 17 | 176 | 84 | 131 | 29 | 247 | 52 | 52 | 25 |
| | Non Battle Injury | 20 | 9 | 12 | 15 | 4 | 10 | 2 | 35 | 13 | 12 | 2 |
| | Natural Causes | 21 | 10 | 11 | 5 | 0 | 4 | 1 | 26 | 14 | 14 | 0 |
| Jun-10 | All | 144 | 95 | 56 | 226 | 95 | 167 | 39 | 349 | 80 | 70 | 35 |
| | Battle Injury | 99 | 77 | 28 | 193 | 90 | 144 | 31 | 271 | 43 | 40 | 25 |
| | Non Battle Injury | 25 | 8 | 18 | 27 | 5 | 18 | 7 | 52 | 21 | 15 | 9 |
| | Natural Causes | 20 | 10 | 10 | 6 | 0 | 5 | 1 | 26 | 16 | 15 | 1 |
| Jul-10 | All | 170 | 108 | 66 | 230 | 106 | 175 | 40 | 373 | 103 | 95 | 47 |
| | Battle Injury | 112 | 80 | 35 | 197 | 104 | 151 | 30 | 282 | 55 | 53 | 38 |
| | Non Battle Injury | 33 | 13 | 20 | 27 | 2 | 20 | 8 | 60 | 28 | 24 | 6 |
| | Natural Causes | 25 | 15 | 11 | 6 | 0 | 4 | 2 | 31 | 20 | 18 | 3 |
| Aug-10 | All | 146 | 80 | 67 | 227 | 104 | 172 | 41 | 344 | 67 | 64 | 48 |
| | Battle Injury | 92 | 54 | 38 | 205 | 102 | 159 | 33 | 269 | 33 | 30 | 45 |
| | Non Battle Injury | 29 | 11 | 19 | 15 | 2 | 8 | 6 | 44 | 13 | 13 | 2 |
| | Natural Causes | 25 | 15 | 10 | 7 | 0 | 5 | 2 | 31 | 21 | 21 | 1 |
| Sep-10 | All | 132 | 72 | 68 | 267 | 103 | 214 | 50 | 377 | 58 | 53 | 44 |
| | Battle Injury | 81 | 51 | 37 | 242 | 101 | 198 | 43 | 301 | 29 | 25 | 39 |
| | Non Battle Injury | 27 | 7 | 20 | 20 | 2 | 12 | 6 | 47 | 17 | 16 | 3 |
| | Natural Causes | 24 | 14 | 11 | 5 | 0 | 4 | 1 | 29 | 12 | 12 | 2 |
| Oct-10 | All | 105 | 62 | 45 | 247 | 113 | 185 | 47 | 337 | 57 | 50 | 37 |
| | Battle Injury | 53 | 41 | 12 | 222 | 111 | 165 | 40 | 261 | 22 | 19 | 30 |
| | Non Battle Injury | 30 | 9 | 23 | 20 | 2 | 17 | 5 | 49 | 17 | 14 | 6 |
| | Natural Causes | 22 | 12 | 10 | 5 | 0 | 3 | 2 | 27 | 18 | 17 | 1 |
| Nov-10 | All | 120 | 74 | 51 | 238 | 111 | 186 | 29 | 333 | 59 | 56 | 26 |
| | Battle Injury | 68 | 50 | 21 | 217 | 110 | 169 | 21 | 262 | 26 | 24 | 23 |
| | Non Battle Injury | 25 | 7 | 19 | 18 | 1 | 15 | 7 | 41 | 14 | 13 | 3 |
| | Natural Causes | 27 | 17 | 11 | 3 | 0 | 2 | 1 | 30 | 19 | 19 | 0 |
| Dec-10 | All | 86 | 59 | 28 | 171 | 97 | 129 | 17 | 249 | 47 | 47 | 14 |
| | Battle Injury | 42 | 39 | 4 | 159 | 96 | 121 | 12 | 193 | 19 | 19 | 12 |
| | Non Battle Injury | 27 | 8 | 19 | 10 | 1 | 6 | 5 | 37 | 15 | 15 | 1 |
| | Natural Causes | 17 | 12 | 5 | 2 | 0 | 2 | 0 | 19 | 13 | 13 | 1 |
| Jan-11 | All | 111 | 63 | 51 | 218 | 118 | 173 | 28 | 309 | 49 | 46 | 17 |
| | Battle Injury | 70 | 47 | 24 | 198 | 114 | 159 | 23 | 248 | 28 | 26 | 16 |
| | Non Battle Injury | 23 | 9 | 15 | 16 | 2 | 12 | 5 | 39 | 13 | 12 | 1 |
| | Natural Causes | 18 | 7 | 12 | 4 | 2 | 2 | 0 | 22 | 8 | 8 | 0 |
| Feb-11 | All | 106 | 56 | 56 | 254 | 122 | 195 | 39 | 326 | 34 | 33 | 25 |
| | Battle Injury | 74 | 42 | 37 | 232 | 118 | 181 | 33 | 272 | 16 | 16 | 22 |
| | Non Battle Injury | 17 | 7 | 10 | 19 | 2 | 12 | 6 | 36 | 8 | 7 | 3 |
| | Natural Causes | 15 | 7 | 9 | 3 | 2 | 2 | 0 | 18 | 10 | 10 | 0 |
| Mar-11 | All | 147 | 84 | 67 | 256 | 120 | 211 | 33 | 365 | 53 | 51 | 23 |
| | Battle Injury | 101 | 62 | 43 | 224 | 117 | 183 | 27 | 289 | 25 | 25 | 15 |
| | Non Battle Injury | 30 | 13 | 17 | 22 | 2 | 19 | 6 | 51 | 18 | 17 | 5 |
| | Natural Causes | 16 | 9 | 7 | 10 | 1 | 9 | 0 | 25 | 10 | 9 | 3 |

Source: Defence Patient Tracking System (DPTS)

1. Patients include Naval Service Personnel, Army Personnel including those from the Gibraltar Regiment, RAF Personnel, Reservists and UK Civilians. These exclude Other Nations Service Personnel.
2. An in-patient is a patient that has been admitted and allocated a ward bed. A residential patient is a patient that is on a three week rehab course; they are not allocated a ward bed, but reside in dormitory style accommodation. An outpatient is a non-resident patient attending RCDM or DMRC for treatment.
3. Patients treated at RCDM and or DMRC are considered new patients during the time period that they are first treated at these locations within their care pathway. For example, a patient treated for the first time at RCDM in January 2010 and subsequently treated for the first time at DMRC in March 2010 for the same injury/illness will be included in the January 2010 New patients figures under 'RCDM or DMRC' only
4. A battle injury includes those wounded as a result of hostile action. This includes injuries sustained whilst avoiding direct and indirect fire. A non-battle injury is any injury that is not caused by a hostile act and includes any accidental injuries such as sports injuries, road traffic accidents etc. Natural cause includes illness, disease and pregnancy. The distinctions between Battle Injury, Non Battle Injury and Natural cause have been validated against operational casualty data where possible (Annex B).

Table A5: Op HERRICK patients¹ receiving treatment at RCDM and DMRC by month, 1 April 2011 - 31 March 2012, Number

| Financial Year | Injury Class ⁴ | RCDM Birmingham ² | | | DMRC Headley Court ² | | | | No. of patients seen at RCDM and/or DMRC | New Patients ³ | | |
|-----------------------|---------------------------|------------------------------|------------|-------------|---------------------------------|------------|-------------|---------------------|--|---------------------------|------|------|
| | | All RCDM Afghanistan | In-Patient | Out-patient | All DMRC Afghanistan | In-Patient | Out-patient | Residential Patient | | RCDM or DMRC | RCDM | DMRC |
| 1 April 11 - March 12 | All | 632 | 477 | 310 | 614 | 248 | 590 | 160 | 994 | 497 | 451 | 231 |
| | Battle Injury | 350 | 272 | 186 | 524 | 245 | 504 | 127 | 635 | 221 | 198 | 189 |
| | Non Battle Injury | 117 | 72 | 71 | 68 | 2 | 66 | 24 | 173 | 113 | 97 | 33 |
| | Natural Causes | 165 | 133 | 53 | 22 | 1 | 20 | 9 | 186 | 163 | 156 | 9 |
| Apr-11 | All | 97 | 62 | 40 | 230 | 111 | 163 | 30 | 307 | 40 | 37 | 18 |
| | Battle Injury | 65 | 43 | 26 | 212 | 110 | 169 | 25 | 257 | 13 | 12 | 15 |
| | Non Battle Injury | 16 | 8 | 8 | 15 | 0 | 13 | 4 | 31 | 13 | 11 | 3 |
| | Natural Causes | 16 | 11 | 6 | 3 | 1 | 1 | 1 | 19 | 14 | 14 | 0 |
| May-11 | All | 120 | 72 | 50 | 243 | 117 | 195 | 36 | 322 | 49 | 43 | 31 |
| | Battle Injury | 77 | 44 | 34 | 226 | 115 | 182 | 32 | 264 | 23 | 18 | 25 |
| | Non Battle Injury | 21 | 12 | 10 | 12 | 1 | 9 | 4 | 31 | 9 | 9 | 4 |
| | Natural Causes | 22 | 16 | 6 | 5 | 1 | 4 | 0 | 27 | 17 | 16 | 2 |
| Jun-11 | All | 109 | 69 | 45 | 260 | 108 | 206 | 46 | 354 | 44 | 39 | 23 |
| | Battle Injury | 66 | 42 | 26 | 234 | 106 | 188 | 37 | 286 | 16 | 15 | 15 |
| | Non Battle Injury | 18 | 9 | 12 | 21 | 2 | 15 | 6 | 38 | 10 | 6 | 8 |
| | Natural Causes | 25 | 18 | 7 | 5 | 0 | 3 | 3 | 30 | 18 | 18 | 0 |
| Jul-11 | All | 102 | 65 | 43 | 241 | 116 | 197 | 36 | 315 | 39 | 36 | 13 |
| | Battle Injury | 73 | 48 | 28 | 224 | 115 | 186 | 29 | 269 | 24 | 22 | 12 |
| | Non Battle Injury | 12 | 4 | 9 | 12 | 1 | 8 | 5 | 24 | 6 | 5 | 1 |
| | Natural Causes | 17 | 13 | 6 | 5 | 0 | 3 | 2 | 22 | 9 | 9 | 0 |
| Aug-11 | All | 122 | 77 | 51 | 222 | 99 | 178 | 31 | 311 | 57 | 54 | 21 |
| | Battle Injury | 88 | 59 | 35 | 197 | 99 | 164 | 19 | 252 | 33 | 32 | 19 |
| | Non Battle Injury | 13 | 5 | 8 | 19 | 0 | 11 | 9 | 32 | 9 | 8 | 1 |
| | Natural Causes | 21 | 13 | 8 | 6 | 0 | 3 | 3 | 27 | 15 | 14 | 1 |
| Sep-11 | All | 108 | 63 | 48 | 251 | 119 | 213 | 31 | 332 | 41 | 37 | 15 |
| | Battle Injury | 77 | 45 | 34 | 228 | 118 | 199 | 22 | 278 | 20 | 17 | 14 |
| | Non Battle Injury | 16 | 8 | 8 | 21 | 1 | 13 | 8 | 37 | 10 | 9 | 1 |
| | Natural Causes | 15 | 10 | 6 | 2 | 0 | 1 | 1 | 17 | 11 | 11 | 0 |
| Oct-11 | All | 92 | 57 | 39 | 241 | 113 | 194 | 29 | 311 | 41 | 35 | 23 |
| | Battle Injury | 61 | 39 | 24 | 219 | 111 | 175 | 26 | 258 | 19 | 16 | 18 |
| | Non Battle Injury | 14 | 7 | 9 | 18 | 1 | 15 | 3 | 32 | 11 | 9 | 4 |
| | Natural Causes | 17 | 11 | 6 | 4 | 1 | 4 | 0 | 21 | 11 | 10 | 1 |
| Nov-11 | All | 85 | 62 | 26 | 236 | 104 | 202 | 32 | 303 | 37 | 36 | 18 |
| | Battle Injury | 52 | 45 | 8 | 222 | 104 | 190 | 28 | 256 | 16 | 16 | 16 |
| | Non Battle Injury | 14 | 4 | 10 | 8 | 0 | 6 | 3 | 22 | 7 | 7 | 1 |
| | Natural Causes | 19 | 13 | 8 | 6 | 0 | 6 | 1 | 25 | 14 | 13 | 1 |
| Dec-11 | All | 75 | 47 | 31 | 193 | 76 | 169 | 15 | 258 | 34 | 33 | 10 |
| | Battle Injury | 53 | 36 | 18 | 177 | 76 | 155 | 13 | 220 | 21 | 20 | 10 |
| | Non Battle Injury | 11 | 3 | 9 | 11 | 0 | 10 | 1 | 22 | 4 | 4 | 0 |
| | Natural Causes | 11 | 8 | 4 | 5 | 0 | 4 | 1 | 16 | 9 | 9 | 0 |
| Jan-12 | All | 79 | 46 | 39 | 213 | 103 | 189 | 16 | 274 | 40 | 34 | 22 |
| | Battle Injury | 45 | 25 | 23 | 205 | 103 | 181 | 14 | 232 | 14 | 11 | 19 |
| | Non Battle Injury | 14 | 6 | 10 | 6 | 0 | 6 | 2 | 20 | 10 | 8 | 2 |
| | Natural Causes | 20 | 15 | 6 | 2 | 0 | 2 | 0 | 22 | 16 | 15 | 1 |
| Feb-12 | All | 75 | 41 | 36 | 225 | 112 | 200 | 27 | 273 | 31 | 30 | 14 |
| | Battle Injury | 41 | 19 | 23 | 215 | 112 | 191 | 25 | 229 | 7 | 6 | 13 |
| | Non Battle Injury | 18 | 9 | 9 | 7 | 0 | 6 | 2 | 25 | 10 | 10 | 1 |
| | Natural Causes | 16 | 13 | 4 | 3 | 0 | 3 | 0 | 19 | 14 | 14 | 0 |
| Mar-12 | All | 81 | 43 | 44 | 246 | 113 | 209 | 25 | 305 | 44 | 37 | 23 |
| | Battle Injury | 49 | 27 | 26 | 226 | 113 | 191 | 21 | 253 | 15 | 13 | 13 |
| | Non Battle Injury | 16 | 6 | 11 | 14 | 0 | 13 | 2 | 30 | 14 | 11 | 7 |
| | Natural Causes | 16 | 10 | 7 | 6 | 0 | 5 | 2 | 22 | 15 | 13 | 3 |

Source: Defence Patient Tracking System (DPTS)

1. Patients include Naval Service Personnel, Army Personnel including those from the Gibraltar Regiment, RAF Personnel, Reservists and UK Civilians. These exclude Other Nations Service Personnel.
2. An in-patient is a patient that has been admitted and allocated a ward bed. A residential patient is a patient that is on a three week rehab course; they are not allocated a ward bed, but reside in dormitory style accommodation. An outpatient is a non-resident patient attending RCDM or DMRC for treatment.
3. Patients treated at RCDM and/or DMRC are considered new patients during the time period that they are first treated at these locations within their care pathway. For example, a patient treated for the first time at RCDM in January 2010 and subsequently treated for the first time at DMRC in March 2010 for the same injury/illness will be included in the January 2010 New patients figures under 'RCDM or DMRC' only.
4. A battle injury includes those wounded as a result of hostile action. This includes injuries sustained whilst avoiding direct and indirect fire. A non-battle injury is any injury that is not caused by a hostile act and includes any accidental injuries such as sports injuries, road traffic accidents etc. Natural cause includes illness, disease and pregnancy. The distinctions between Battle Injury, Non Battle Injury and Natural cause have been validated against operational casualty data where possible (Annex B).

Table A6: Op HERRICK patients¹ receiving treatment at RCDM and DMRC by month, 1 April 2012 - 31 March 2013, Number

| Financial Year | Injury Class ⁴ | RCDM Birmingham ² | | | DMRC Headley Court ² | | | | No. of patients seen at RCDM and/or DMRC | New Patients ³ | | |
|--------------------------|---------------------------|------------------------------|------------|-------------|---------------------------------|------------|-------------|---------------------|--|---------------------------|------|------|
| | | All RCDM Afghanistan | In-Patient | Out-patient | All DMRC Afghanistan | In-Patient | Out-patient | Residential Patient | | RCDM or DMRC | RCDM | DMRC |
| 1 April 12 - 31 March 13 | All | 537 | 394 | 243 | 587 | 235 | 559 | 155 | 915 | 451 | 398 | 192 |
| | Battle Injury | 281 | 217 | 130 | 493 | 226 | 471 | 128 | 587 | 195 | 170 | 143 |
| | Non Battle Injury | 117 | 73 | 66 | 67 | 8 | 61 | 23 | 166 | 116 | 97 | 36 |
| | Natural Cause | 139 | 104 | 47 | 27 | 1 | 27 | 4 | 162 | 140 | 131 | 13 |
| Apr-12 | All | 79 | 47 | 35 | 211 | 110 | 176 | 27 | 278 | 38 | 38 | 7 |
| | Battle Injury | 37 | 20 | 17 | 203 | 109 | 170 | 24 | 229 | 8 | 9 | 5 |
| | Non Battle Injury | 20 | 9 | 11 | 8 | 1 | 6 | 3 | 27 | 12 | 11 | 2 |
| | Natural Causes | 22 | 18 | 7 | 0 | 0 | 0 | 0 | 22 | 18 | 18 | 0 |
| May-12 | All | 102 | 58 | 48 | 243 | 108 | 216 | 30 | 321 | 53 | 49 | 14 |
| | Battle Injury | 58 | 32 | 29 | 222 | 107 | 199 | 25 | 258 | 26 | 23 | 11 |
| | Non Battle Injury | 25 | 12 | 14 | 17 | 1 | 13 | 5 | 40 | 14 | 13 | 3 |
| | Natural Causes | 19 | 14 | 5 | 4 | 0 | 4 | 0 | 23 | 13 | 13 | 0 |
| Jun-12 | All | 85 | 61 | 27 | 216 | 87 | 170 | 38 | 282 | 42 | 39 | 22 |
| | Battle Injury | 51 | 42 | 11 | 195 | 85 | 156 | 33 | 229 | 17 | 16 | 16 |
| | Non Battle Injury | 16 | 8 | 8 | 18 | 2 | 11 | 5 | 32 | 11 | 8 | 6 |
| | Natural Causes | 18 | 11 | 8 | 3 | 0 | 3 | 0 | 21 | 14 | 15 | 0 |
| Jul-12 | All | 91 | 71 | 25 | 217 | 95 | 181 | 31 | 298 | 55 | 52 | 16 |
| | Battle Injury | 55 | 46 | 12 | 199 | 92 | 166 | 29 | 247 | 26 | 26 | 10 |
| | Non Battle Injury | 16 | 10 | 7 | 17 | 3 | 14 | 2 | 30 | 10 | 8 | 5 |
| | Natural Causes | 20 | 15 | 6 | 1 | 0 | 1 | 0 | 21 | 19 | 18 | 1 |
| Aug-12 | All | 74 | 52 | 23 | 233 | 105 | 197 | 35 | 292 | 45 | 40 | 21 |
| | Battle Injury | 45 | 33 | 13 | 215 | 103 | 186 | 28 | 245 | 23 | 19 | 18 |
| | Non Battle Injury | 20 | 12 | 8 | 15 | 2 | 8 | 7 | 35 | 13 | 13 | 2 |
| | Natural Causes | 9 | 7 | 2 | 3 | 0 | 3 | 0 | 12 | 9 | 8 | 1 |
| Sep-12 | All | 81 | 50 | 34 | 215 | 103 | 172 | 27 | 276 | 42 | 40 | 15 |
| | Battle Injury | 61 | 40 | 22 | 199 | 100 | 162 | 22 | 241 | 30 | 29 | 12 |
| | Non Battle Injury | 15 | 7 | 10 | 13 | 3 | 8 | 4 | 27 | 8 | 7 | 2 |
| | Natural Causes | 5 | 3 | 2 | 3 | 0 | 2 | 1 | 8 | 4 | 4 | 1 |
| Oct-12 | All | 75 | 48 | 31 | 233 | 93 | 188 | 34 | 281 | 40 | 29 | 29 |
| | Battle Injury | 47 | 29 | 21 | 205 | 90 | 165 | 27 | 227 | 13 | 9 | 21 |
| | Non Battle Injury | 14 | 9 | 6 | 19 | 3 | 14 | 5 | 31 | 11 | 8 | 4 |
| | Natural Causes | 14 | 10 | 4 | 9 | 0 | 9 | 2 | 23 | 16 | 12 | 4 |
| Nov-12 | All | 64 | 39 | 27 | 237 | 106 | 198 | 26 | 285 | 31 | 25 | 18 |
| | Battle Injury | 45 | 27 | 19 | 215 | 105 | 183 | 19 | 244 | 15 | 12 | 15 |
| | Non Battle Injury | 10 | 5 | 6 | 15 | 1 | 10 | 4 | 25 | 9 | 6 | 3 |
| | Natural Causes | 9 | 7 | 2 | 7 | 0 | 5 | 3 | 16 | 7 | 7 | 0 |
| Dec-12 | All | 43 | 30 | 15 | 158 | 71 | 131 | 18 | 191 | 23 | 18 | 11 |
| | Battle Injury | 29 | 23 | 7 | 137 | 67 | 117 | 14 | 157 | 8 | 7 | 7 |
| | Non Battle Injury | 7 | 3 | 5 | 17 | 4 | 10 | 4 | 23 | 7 | 5 | 2 |
| | Natural Causes | 7 | 4 | 3 | 4 | 0 | 4 | 0 | 11 | 8 | 6 | 2 |
| Jan-13 | All | 47 | 31 | 17 | 203 | 88 | 169 | 24 | 243 | 29 | 23 | 17 |
| | Battle Injury | 25 | 18 | 8 | 183 | 85 | 155 | 21 | 201 | 13 | 8 | 15 |
| | Non Battle Injury | 11 | 5 | 6 | 12 | 3 | 8 | 1 | 23 | 8 | 7 | 2 |
| | Natural Causes | 11 | 8 | 3 | 8 | 0 | 6 | 2 | 19 | 8 | 8 | 0 |
| Feb-13 | All | 45 | 25 | 23 | 221 | 108 | 174 | 32 | 258 | 29 | 24 | 14 |
| | Battle Injury | 27 | 14 | 14 | 202 | 103 | 162 | 30 | 220 | 10 | 8 | 7 |
| | Non Battle Injury | 9 | 4 | 6 | 12 | 5 | 6 | 1 | 21 | 7 | 6 | 3 |
| | Natural Causes | 9 | 7 | 3 | 7 | 0 | 6 | 1 | 17 | 12 | 10 | 4 |
| Mar-13 | All | 38 | 26 | 20 | 184 | 95 | 152 | 17 | 218 | 24 | 21 | 8 |
| | Battle Injury | 24 | 15 | 10 | 172 | 92 | 142 | 16 | 186 | 6 | 4 | 6 |
| | Non Battle Injury | 7 | 4 | 3 | 10 | 3 | 8 | 1 | 17 | 6 | 5 | 2 |
| | Natural Causes | 7 | 7 | 7 | 2 | 0 | 2 | 0 | 15 | 12 | 12 | 0 |

Source: Defence Patient Tracking System (DPTS)

1. Patients include Naval Service Personnel, Army Personnel including those from the Gibraltar Regiment, RAF Personnel, Reservists and UK Civilians. These exclude Other Nations Service Personnel.
2. An in-patient is a patient that has been admitted and allocated a ward bed. A residential patient is a patient that is on a three week rehab course; they are not allocated a ward bed, but reside in dormitory style accommodation. An outpatient is a non-resident patient attending RCDM or DMRC for treatment.
3. Patients treated at RCDM and/or DMRC are considered new patients during the time period that they are first treated at these locations within their care pathway. For example, a patient treated for the first time at RCDM in January 2010 and subsequently treated for the first time at DMRC in March 2010 for the same injury/illness will be included in the January 2010 New patients figures under 'RCDM or DMRC' only
4. A battle injury includes those wounded as a result of hostile action. This includes injuries sustained whilst avoiding direct and indirect fire. A non-battle injury is any injury that is not caused by a hostile act and includes any accidental injuries such as sports injuries, road traffic accidents etc. Natural cause includes illness, disease and pregnancy. The distinctions between Battle Injury, Non Battle Injury and Natural cause have been validated against operational casualty data where possible (Annex B).

Table A7: Op HERRICK patients¹ receiving treatment at RCDM and DMRC by month, 1 April 2013 - 31 March 2014, Number

| Financial Year | Injury Class ⁴ | RCDM Birmingham ² | | | DMRC Headley Court ² | | | | No. of patients seen at RCDM and/or DMRC | New Patients ³ | | |
|----------------------------|---------------------------|------------------------------|------------|-------------|---------------------------------|------------|-------------|---------------------|--|---------------------------|------|------|
| | | All RCDM Afghanistan | In-Patient | Out-patient | All DMRC Afghanistan | In-Patient | Out-patient | Residential Patient | | RCDM or DMRC | RCDM | DMRC |
| 1 April 2013 - 31 Mar 2014 | All | 281 | 207 | 142 | 447 | 196 | 425 | 114 | 625 | 241 | 195 | 97 |
| | Battle Injury | 113 | 87 | 61 | 355 | 186 | 339 | 77 | 377 | 61 | 43 | 54 |
| | Non Battle Injury | 88 | 54 | 48 | 63 | 9 | 58 | 27 | 140 | 98 | 78 | 31 |
| | Natural Cause | 80 | 66 | 33 | 29 | 1 | 28 | 10 | 108 | 82 | 74 | 12 |
| Apr-13 | All | 52 | 27 | 31 | 207 | 105 | 166 | 20 | 247 | 23 | 20 | 11 |
| | Battle Injury | 29 | 17 | 15 | 183 | 102 | 155 | 8 | 200 | 6 | 4 | 7 |
| | Non Battle Injury | 10 | 3 | 8 | 17 | 3 | 8 | 8 | 27 | 7 | 6 | 2 |
| | Natural Causes | 13 | 7 | 8 | 7 | 0 | 3 | 4 | 20 | 10 | 10 | 2 |
| May-13 | All | 53 | 38 | 17 | 214 | 102 | 169 | 25 | 254 | 32 | 26 | 11 |
| | Battle Injury | 30 | 25 | 7 | 189 | 99 | 151 | 17 | 206 | 10 | 10 | 5 |
| | Non Battle Injury | 16 | 7 | 9 | 18 | 3 | 12 | 7 | 34 | 14 | 10 | 4 |
| | Natural Causes | 7 | 6 | 1 | 7 | 0 | 6 | 1 | 14 | 8 | 6 | 2 |
| Jun-13 | All | 63 | 37 | 27 | 201 | 103 | 163 | 18 | 249 | 35 | 28 | 14 |
| | Battle Injury | 31 | 19 | 12 | 168 | 100 | 136 | 12 | 184 | 8 | 4 | 8 |
| | Non Battle Injury | 17 | 8 | 9 | 21 | 3 | 17 | 4 | 38 | 13 | 11 | 5 |
| | Natural Causes | 15 | 10 | 6 | 12 | 0 | 10 | 2 | 27 | 14 | 13 | 1 |
| Jul-13 | All | 41 | 28 | 13 | 209 | 80 | 181 | 25 | 242 | 19 | 18 | 11 |
| | Battle Injury | 19 | 14 | 5 | 180 | 78 | 156 | 17 | 191 | 6 | 6 | 7 |
| | Non Battle Injury | 14 | 9 | 5 | 16 | 2 | 13 | 5 | 30 | 8 | 8 | 1 |
| | Natural Causes | 8 | 5 | 3 | 13 | 0 | 12 | 3 | 21 | 5 | 4 | 3 |
| Aug-13 | All | 33 | 26 | 7 | 177 | 90 | 135 | 20 | 202 | 18 | 16 | 3 |
| | Battle Injury | 15 | 12 | 3 | 152 | 87 | 120 | 11 | 160 | 3 | 2 | 2 |
| | Non Battle Injury | 8 | 6 | 2 | 16 | 3 | 7 | 7 | 23 | 7 | 6 | 1 |
| | Natural Causes | 10 | 8 | 2 | 9 | 0 | 8 | 2 | 19 | 8 | 8 | 0 |
| Sep-13 | All | 50 | 29 | 22 | 190 | 91 | 148 | 31 | 228 | 29 | 24 | 10 |
| | Battle Injury | 18 | 10 | 9 | 159 | 87 | 129 | 21 | 168 | 7 | 4 | 5 |
| | Non Battle Injury | 15 | 7 | 8 | 25 | 4 | 13 | 9 | 38 | 9 | 8 | 4 |
| | Natural Causes | 17 | 12 | 5 | 6 | 0 | 6 | 1 | 22 | 13 | 12 | 1 |
| Oct-13 | All | 29 | 17 | 13 | 191 | 89 | 160 | 31 | 211 | 12 | 6 | 9 |
| | Battle Injury | 18 | 11 | 7 | 165 | 84 | 139 | 25 | 176 | 7 | 4 | 5 |
| | Non Battle Injury | 5 | 1 | 4 | 20 | 5 | 16 | 5 | 23 | 3 | 0 | 4 |
| | Natural Causes | 6 | 5 | 2 | 6 | 0 | 5 | 1 | 12 | 2 | 2 | 0 |
| Nov-13 | All | 30 | 17 | 14 | 187 | 91 | 149 | 23 | 210 | 20 | 16 | 7 |
| | Battle Injury | 12 | 5 | 7 | 162 | 86 | 128 | 18 | 167 | 5 | 3 | 4 |
| | Non Battle Injury | 9 | 5 | 5 | 20 | 5 | 16 | 5 | 29 | 9 | 7 | 3 |
| | Natural Causes | 9 | 7 | 2 | 5 | 0 | 5 | 0 | 14 | 6 | 6 | 0 |
| Dec-13 | All | 26 | 19 | 7 | 129 | 64 | 102 | 13 | 153 | 14 | 11 | 3 |
| | Battle Injury | 10 | 8 | 2 | 110 | 61 | 87 | 10 | 118 | 3 | 2 | 1 |
| | Non Battle Injury | 10 | 5 | 5 | 12 | 3 | 8 | 3 | 22 | 6 | 5 | 1 |
| | Natural Causes | 6 | 6 | 0 | 7 | 0 | 7 | 0 | 13 | 5 | 4 | 1 |
| Jan-14 | All | 36 | 17 | 19 | 156 | 71 | 132 | 13 | 184 | 19 | 15 | 8 |
| | Battle Injury | 12 | 5 | 7 | 131 | 65 | 111 | 12 | 137 | 2 | 2 | 3 |
| | Non Battle Injury | 11 | 4 | 7 | 19 | 5 | 15 | 1 | 28 | 9 | 6 | 4 |
| | Natural Causes | 13 | 8 | 5 | 6 | 1 | 6 | 0 | 19 | 8 | 7 | 1 |
| Feb-14 | All | 28 | 17 | 14 | 139 | 71 | 118 | 12 | 161 | 5 | 5 | 4 |
| | Battle Injury | 13 | 7 | 6 | 119 | 65 | 102 | 8 | 126 | 0 | 0 | 4 |
| | Non Battle Injury | 10 | 6 | 4 | 17 | 6 | 13 | 3 | 26 | 4 | 4 | 0 |
| | Natural Causes | 5 | 4 | 4 | 3 | 0 | 3 | 1 | 9 | 1 | 1 | 0 |
| Mar-14 | All | 22 | 9 | 14 | 141 | 72 | 112 | 19 | 158 | 15 | 10 | 6 |
| | Battle Injury | 8 | 5 | 3 | 117 | 69 | 93 | 12 | 120 | 4 | 2 | 3 |
| | Non Battle Injury | 10 | 3 | 8 | 14 | 2 | 9 | 6 | 24 | 9 | 7 | 2 |
| | Natural Causes | 4 | 1 | 3 | 10 | 1 | 10 | 1 | 14 | 2 | 1 | 1 |

Source: Defence Patient Tracking System (DPTS)

1. Patients include Naval Service Personnel, Army Personnel including those from the Gibraltar Regiment, RAF Personnel, Reservists and UK Civilians. These exclude Other Nations Service Personnel.
2. An in-patient is a patient that has been admitted and allocated a ward bed. A residential patient is a patient that is on a three week rehab course; they are not allocated a ward bed, but reside in dormitory style accommodation. An outpatient is a non-resident patient attending RCDM or DMRC for treatment.
3. Patients treated at RCDM and/or DMRC are considered new patients during the time period that they are first treated at these locations within their care pathway. For example, a patient treated for the first time at RCDM in January 2010 and subsequently treated for the first time at DMRC in March 2010 for the same injury/illness will be included in the January 2010 New patients figures under 'RCDM or DMRC' only
4. A battle injury includes those wounded as a result of hostile action. This includes injuries sustained whilst avoiding direct and indirect fire. A non-battle injury is any injury that is not caused by a hostile act and includes any accidental injuries such as sports injuries, road traffic accidents etc. Natural cause includes illness, disease and pregnancy. The distinctions between Battle Injury, Non Battle Injury and Natural cause have been validated against operational casualty data where possible (Annex B).

Validating Injury Class

28. In order to validate the injury class of a patient (BI, NBI or NC), Defence Statistics (Health) compare the data captured on the DPTS to information stored on the Defence Health Database (DHD). Patient care pathways held on the DPTS are linked to DHD events using a personal identifier (pseudo-anonymised) and date of injury. All automatic links between DPTS care pathways and DHD events are manually validated and DHD events that are not linked to a care pathway but are attributed to an individual with at least one care pathway are checked to ensure that no linkage should occur. If there is a discrepancy between the information stored on the DHD and the DPTS, a qualitative assessment of the data is made by analysts based on the narrative contents of both data sources. If there is insufficient information available in the DHD and DPTS to identify an injury class, Defence Statistics (Health) contact the Defence Patient Tracking Cell (DPTC) for further clarification on the incident. The injury class assessments are made according to the criteria outlined below:

Battle Injury

29. Any injury sustained whilst under direct and indirect fire is referred to as a Battle Injury (BI). Whilst this is frequently applied to injuries such as gunshot and fragmentation wounds, it is also applied to injuries sustained whilst avoiding hostile fire and friendly fire.

Non-Battle Injury

30. Any injury sustained as a result of external causes not as a result of direct or indirect fire is referred to as a Non-Battle Injury (NBI). This includes:

- i. Injuries caused by sports and other external factors (e.g. training, normal duties and negligent discharge of a firearm)
- ii. Bites and stings
- iii. Heat and cold injuries
- iv. Accidental poisonings & allergic reactions (excluding asthma and other respiratory conditions)

Natural Cause

31. Any illness not as a result of external causes is referred to as a natural cause. This will include bacterial infections (where not the result an injury), viral infections (where not the result of biological weaponry) and musculoskeletal pain. Any mental or behavioural disorders (including post traumatic stress disorder - PTSD) are also classified as NC. Asthma and other respiratory conditions that have been exacerbated or triggered by external factors are also classified as natural cause.

32. If the information available from the DPTS and the DHD is not sufficient to adequately categorise injury or illness, Defence Statistics contact the Defence Patient Tracking Cell for further clarification on the incident.

Defence Health Database (DHD)

33. Data held on the DHD comes from four separate sources: Field Hospital Admissions from J97 Returns and Operational Emergency Attendance Register (OpEDAR), NOTICAS, Aeromedical Evacuation and Joint Theatre Trauma Registry (JTTR). They all hold information regarding the injury class of the patient, with the exception of the Aeromedical Evacuation notes which contain diagnosis codes that are utilised to determine an injury class. If there is a discrepancy in the injury class recorded between any of the four data sources, a manual examination of the narrative data for each source is made, and a qualitative assessment of the correct classification of an injury or illness is conducted against the injury class criteria outlined above. If there is insufficient information from these four data sources to identify an injury class, Defence Statistics (Health) contact the Academic Department of Military Emergency Medicine (ADMEM) for further JTTR information, the Joint Casualty and Compassionate Centre (JCCC) for further NOTICAS information, the Permanent Joint Headquarters (PJHQ) for further Field Hospital Admission information and the Aeromedical Evacuation Control Centre (AECC) for further Aeromedical Evacuation information.

34. A more detailed description of each of the four data sources can be found in the section below:

Field Hospital Admissions from J97 Returns and OpEDAR

35. The UK has a Field Hospital at Camp Bastion, this provides deployed hospital care to coalition forces and, when indicated, Afghan National Security Forces and local nationals. Associated support elements include Emergency Medicine, Surgery, Medicine, Intensive Care Unit, and Medium and Low dependency nursing care beds. Advanced diagnostic support is provided by a laboratory and an imaging department that includes two CT Scanners. The exact clinical contribution is constantly under review, being mission-tailored to provide the best mix of specialties and support services.

36. Defence Statistics receive information on the patients who are admitted to the UK Field Hospital at Camp Bastion from the J97 Returns. This J97 return also includes those patients admitted to the following two locations:

37. The HQ of Multinational Brigade (South) in Kandahar maintain a Field Hospital which provides support for ISAF and Coalition personnel. This facility includes additional capabilities to that of the Role 2 including specialist diagnostic resources and specialist surgical and medical capabilities.

38. In Kabul, UK Personnel may be admitted to either the French or Greek Field Hospital. There is also a US facility which provides physiotherapy and dentistry.

39. Up until 31 December 2011, Defence Statistics also received information on admissions and attendances at the UK Field Hospital at Camp Bastion from the OpEDAR. This register has now been replaced with a new IT system; Whole Hospital Information System (WHIS). Defence Statistics now receive an extract from WHIS that will be used in the future to replace the statistics produced by OpEDAR.

40. An admission to the field hospital is where a patient is allocated a bed; this could be within the Ward, in Intensive Care, or Surgery. If the patient is not allocated a bed they are recorded as an attendance, they are seen and treated without the need to allocate a bed.

41. Field Hospital Admissions from J97 Returns and OpEDAR, information is available from 1 March 2006 (Opening of the UK Field Hospital in Afghanistan).

NOTICAS

42. Notification of Casualty (or "NOTICAS") is the name for the formalised system of reporting casualties within the UK Armed Forces. The NOTICAS reports raised for casualties contain information on how seriously medical staff in theatre judge their condition to be. They are not strictly medical categories but are designed to give an indication of the severity of the injury or illness to inform what the individual's next of kin are told.

43. The NOTICAS system is initiated very early in the patient's admission to the field hospital in Afghanistan, the classification of a casualty will change as time progresses. The initial signal listing may in some cases be followed by an updated less serious listing if the case appeared worse on admission than transpires.

44. Initial Notification of Casualty (NOTICAS), information is available from 7 October 2001 (start of Operations in Afghanistan).

Aeromedical Evacuation

45. Aeromedical Evacuation is the medically supervised movement of patients to and between medical facilities by air transportation. The RAF Aeromedical Evacuation Service provides the worldwide patient air movement capability for Defence 24 hours a day, 365 days a year. Patients are risk assessed prior to flight, and when necessary, trained medical teams are provided to deliver care in the air.

46. Defence Statistics receive Aeromedical evacuation records fortnightly from the Aeromedical Evacuation Control Centre (AECC) at RAF Brize Norton for operations in Afghanistan.

47. Aeromedical Evacuations, information is available from 1 January 2003 to 31 July 2012 (latest data available). Information on Aeromedical Evacuations from 7 October 2001 to 31 December 2002 is not held electronically.

Joint Theatre Trauma Registry (JTTR)

48. The JTTR commenced during 2003 to improve the care of the seriously injured patient from the point of injury to the point of discharge from hospital treatment (both in Afghanistan and UK). The JTTR records patient level clinical information on trauma patients admitted to a field hospital in Afghanistan where the UK Trauma Team was activated.