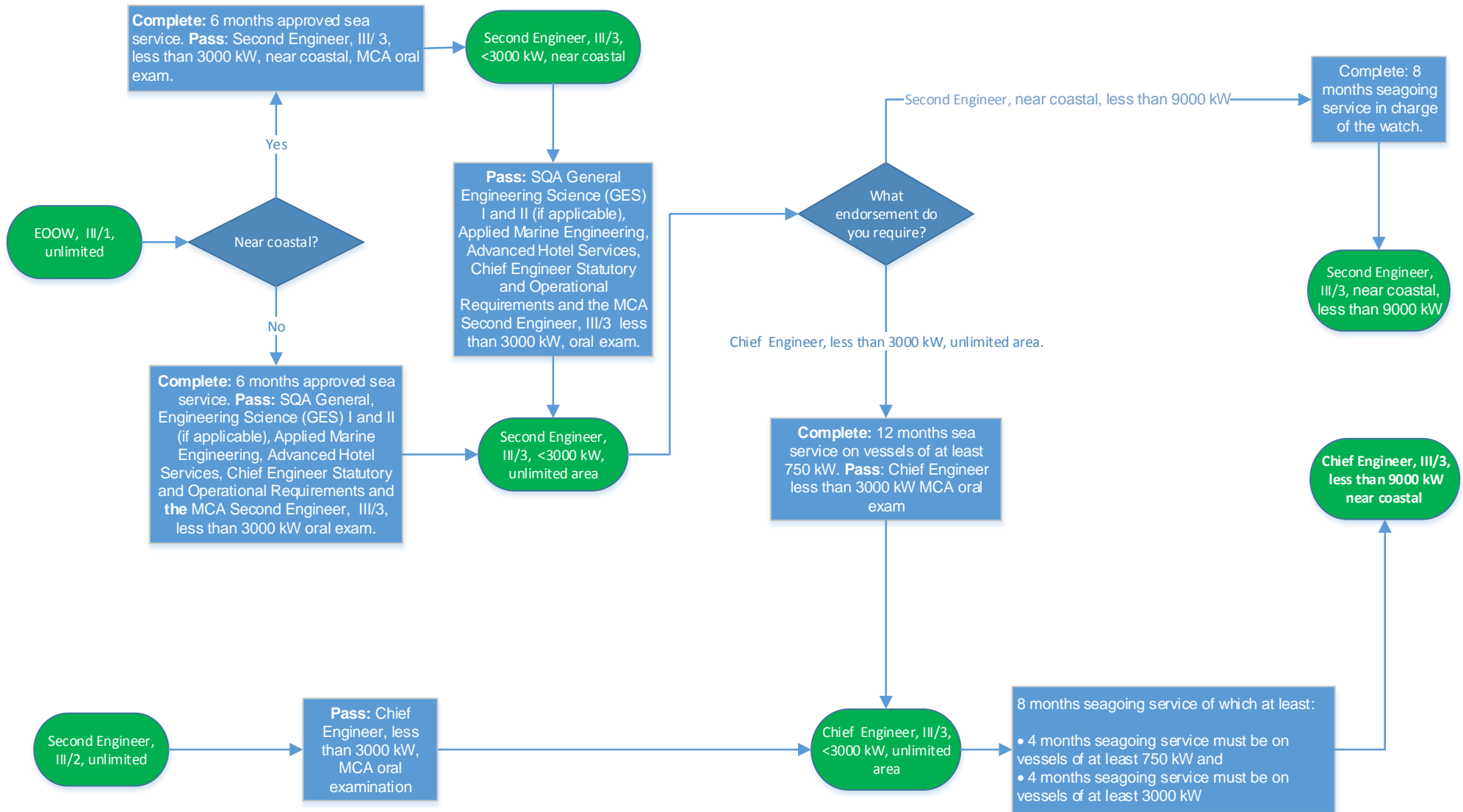


This flow chart is to summarise the progression through the limited Certificate of Competency structure. To be issued with a Certificate of Competency (CoC) you must meet the full requirements listed in the applicable section of this MSN.



To be issued with a Certificate of Competency, you must meet all the requirements of the relevant section of this MSN; for CoCs less than 3000 kW, unlimited area, please refer to section 3.7 and for CoCs with a near coastal limitation please refer to section 3.8.