



Department for  
Communities and  
Local Government

# National Evaluation of the Troubled Families Programme

**Interim Report Family Monitoring Data**  
**A report by Ecorys UK**

© Crown copyright, 2014

*Copyright in the typographical arrangement rests with the Crown.*

You may re-use this information (not including logos) free of charge in any format or medium, under the terms of the Open Government Licence. To view this licence, [www.nationalarchives.gov.uk/doc/open-government-licence/](http://www.nationalarchives.gov.uk/doc/open-government-licence/) or write to the Information Policy Team, The National Archives, Kew, London TW9 4DU, or email: [psi@nationalarchives.gsi.gov.uk](mailto:psi@nationalarchives.gsi.gov.uk).

This document/publication is also available on our website at [www.gov.uk/dclg](http://www.gov.uk/dclg)

If you have any enquiries regarding this document/publication, email [contactus@communities.gov.uk](mailto:contactus@communities.gov.uk) or write to us at:

Department for Communities and Local Government  
Eland House  
Bressenden Place  
London  
SW1E 5DU  
Telephone: 030 3444 0000

For all our latest news and updates follow us on Twitter: <https://twitter.com/CommunitiesUK>

July 2014

ISBN: 978-1-4098-4283-5

# Contents

<b>1.0</b>	<b>Family Monitoring Data .....</b>	<b>4</b>
<b>1.1</b>	<b>Introduction .....</b>	<b>4</b>
<b>1.2</b>	<b>Data Submitted: Strengths and Limitations .....</b>	<b>5</b>
<b>1.3</b>	<b>How have Families' Problems Clustered Together? .....</b>	<b>10</b>
<b>1.4</b>	<b>What are the Main Problems Families Encounter? .....</b>	<b>15</b>
<b>1.5</b>	<b>What can we say about Individuals? .....</b>	<b>18</b>
<b>1.6</b>	<b>What are the Characteristics of Families? .....</b>	<b>20</b>
<b>1.7</b>	<b>Next Steps .....</b>	<b>23</b>
	<b>Annex One: Frequency Tables for Indicators at Entry .....</b>	<b>A21</b>

## 1.0 Family Monitoring Data

### 1.1 Introduction

This report summarises the early findings from the data submitted by local authorities as part of the first round of submissions for the Family Monitoring Data (FMD) element of the National Evaluation of the Troubled Families Programme. It outlines the evidence from the first batch of data on families working with a local Troubled Families intervention from the start of the programme (April 2012) to the end of December 2013. Most of the results are limited to presenting the data rather than providing interpretation. It should be noted that the data collection is in its very early stages, of varying quality and, at this stage, we are unsure whether the data submitted is representative of all troubled families going through the programme. It is anticipated that future data returns will be of improved quality.

The FMD provides a national level dataset about troubled families based on a consistent dataset drawn from every local authority. By collecting information on family composition, profile, the types and range of problems experienced by families and how those problems change throughout the duration of the intervention it is possible to build a rich and detailed picture of those being helped through the programme.

Submissions by local authorities were made via a standardised template produced by Ecorys. A supporting guidance document<sup>1</sup> and an email support facility were also provided in an effort to maintain data fidelity/consistency as far as possible. All indicators are specified at the household level (rather than at individual level) in order to understand problems at a family level, minimise the burden of entering individual level data and to provide consistency with the financial framework for the programme<sup>2</sup>. The indicators selected for inclusion in the FMD template are those proposed to all local authorities in September 2012, and where at least 50 local authorities confirmed they would be able to provide this information. Indicators combine both recognised standard measures and those which rely on practitioner intelligence. No identifiable information was requested; families were instead assigned a Unique Reference Number (URN) by the local authority. FMD will be collected, analysed and managed by Ecorys for the duration of the national evaluation.

---

<sup>1</sup> Full details and a full list of indicators were provided in guidance to local authorities, available here: [http://portal.troubledfamilies.org.uk/FMD\\_guidance\\_for\\_national\\_indicator\\_set\\_version1.0.pdf](http://portal.troubledfamilies.org.uk/FMD_guidance_for_national_indicator_set_version1.0.pdf)

<sup>2</sup> See Financial Framework: <https://www.gov.uk/government/publications/the-troubled-families-programme-financial-framework>

Data was requested at three points:

1. At the start of work with each family supported by the Troubled Families programme (ENTRY).
2. At the point at which a claim is made for 'turning that family around' as per the results in the Financial Framework (CLAIM).
3. At the point at which the family exits the service (CLOSURE), recognising that work may continue with some families after they have been turned around.

In most instances, the measure is based on a snapshot – i.e. the “current” status at the point of measurement (e.g. the number of NEETs in the household – at ENTRY, CLAIM and CLOSURE stages). However, a number of indicators are based on a count of episodes / occurrences over a fixed time period. The time period is clearly specified in each case (e.g. “past 6 months” or “previous school term”<sup>3</sup>). However, data fidelity cannot be verified at source, and it is likely that some data submitted will be local authorities’ ‘best fit’ to the data requested, due to lack of easily obtainable data. It is anticipated that data fidelity will improve with each of the subsequent monitoring submissions as we understand that, with a common template now in place, local authorities are collecting data on the indicators for families entering the service from the point of this first request going forwards (and in some cases retrospective data gathering).

Three further rounds of data submissions will provide a cumulative record of families worked with throughout the programme, as well as an opportunity to update records provided with this initial return.

The next round of returns will also allow a number of data fidelity issues to be clarified. Although these are not significant in relation to the data collection method (and need to be understood in view of gathering data from all local authorities, with many different data collection systems in place, some of which were not capable of collecting sufficient data in time for this first return), the next round of returns will allow for some minor adjustments to the template and emphasis on certain key points within the guidance. Alongside local authorities’ increasing familiarisation with and use of the template, it is expected that these factors will add to the robustness of these interim findings.

## **1.2 Data Submitted: Strengths and Limitations**

Data was submitted by local authorities with an initial deadline of 28 February 2014. This deadline was extended by two weeks to 14 March to allow extra returns to be submitted. Following this point, the data was quality assured to.

---

<sup>3</sup> Please note that whilst exclusions, absence and behaviour are usually measured over three consecutive school terms in the national guidance, this information is only required over a single school term for the Family Monitoring Data. This is to avoid a situation in which data is being measured over a retrospective period that predates the start of the family’s involvement in the programme (which might be the case for shorter interventions).

- check the data for gaps, outliers and consistency;
- reassign any input errors, including contacting local authorities for clarification; and,
- remove any duplicate family records.

This process was extensive and as a result has allowed Ecorys to upload late returns (i.e. those received after 14 March) to the dataset manually from nine local authorities. Useable data were submitted by 133<sup>4</sup> out of the 150<sup>5</sup> local authority areas, representing a healthy response rate of 89%.

This first return asked for local authorities to submit families ‘worked with’ up to the end of December 2013. Local authorities were asked to submit as random a sample as possible, based on the data available. Random sampling was encouraged to try and ensure that the resulting national data-set is as representative as possible of the range of families that are being worked with across the country. However, because the data collection is in its very early stages and the data returns of varying quality, we are unsure whether the data submitted is representative of all troubled families going through the programme, e.g. it may be more likely to include those families on which local authorities readily hold information. It is anticipated that future data returns will be of improved quality<sup>6</sup>.

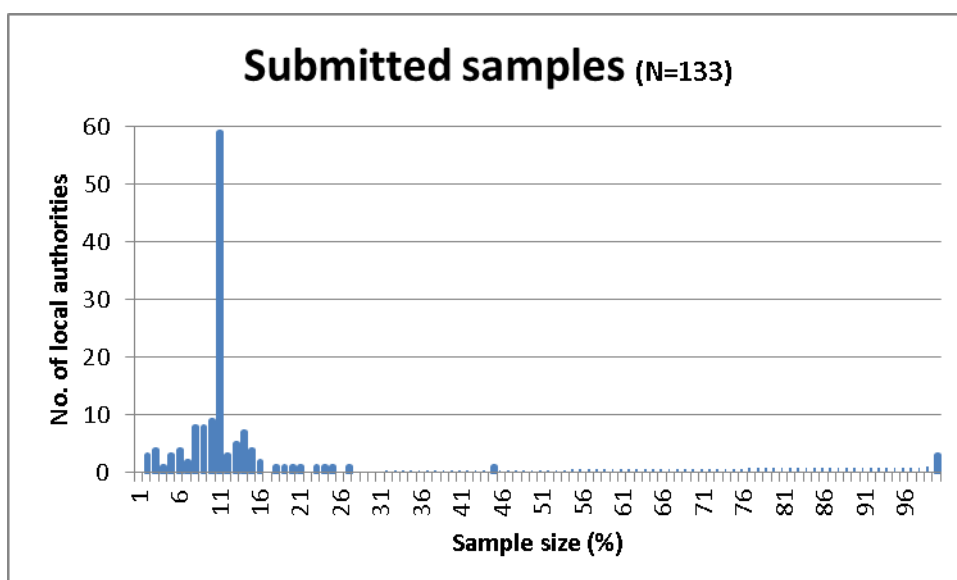
In order to make data requests as manageable as possible, as well as to capture data on a sufficient number of families, a (minimum) 10% sample of families was requested. Some local authorities have not been able to submit a 10% sample at this stage, although have agreed to increase this in subsequent returns. Some local authorities have been able to submit more than 10%. Three local authorities submitted data on all their families. Sample sizes submitted by the 133 local authorities are illustrated in the chart overleaf.

---

<sup>4</sup> 134 returns were submitted but the data received from one local authority had entry data on families that transpired to be entered in error and so was subsequently excluded from the analysis.

<sup>5</sup> 149 out of the 152 top-tier local authorities, plus a “tri-borough” of three local authorities.

<sup>6</sup> See technical annex to the Understanding Troubled Families report.



Records have been submitted on 9,341 families. Within the 9,341 family records there are around 159 families (1.7% of the total sample) included with start dates post-December 2013. These come from a range of local authorities and not necessarily those with larger samples. These 159 families have been excluded from the analysis. In addition data that was considered too poorly completed was excluded, e.g. the data from one local authority and family cases with no data on either children or adults. This resulted in a sample of 8447 (without weighting) family records, representing an overall sample size of 11% of the 78,289 families worked with nationally<sup>7</sup>. An 11% sample provides a margin of error of  $\pm 0.96$  at the 95% confidence level.

Local authorities provided varying sized samples of their data. As a result, it was decided to weight local authorities' returns according to their sample size submitted. The weight used is:

$$10\% \div (\text{sample size submitted})$$

As a result, local authorities submitting a 10% sample have been given a weight of 1; local authorities submitting more than 10% have been weighted less than 1; and local authorities submitting less than 10% have been weighted more than 1.

**Subsequent to this point, all figures quoted in this chapter are weighted data and blanks are excluded (unless otherwise stated). Rounding errors may apply.**

As this was the first round of returns, and with many families not having yet exited the programme, the data submitted primarily focuses on entry stage (rather than claim and closure) and local authorities have agreed to update subsequent returns with any data fields for which they have been unable to collect information for this initial return. As a result, the amount of data provided (excluding blanks) varies between indicators.

<sup>7</sup> <https://www.gov.uk/government/publications/troubled-families-programme-progress-by-31-december-2013>

- Claim data has been submitted in 30% of family records;
- Closure data has been submitted in 24% of family records.

Completion rates that show the base numbers (i.e. data submitted) for entry indicators, based on the weighted cohort of 6577 families (unless indicated otherwise) are shown overleaf.

Indicator	Base	Completion rate (%)
<b>Education, Employment and Training</b>		
Number of children permanently excluded from school	5291	80%
Number of children receiving a fixed term (temporary) exclusion from school	5488	83%
Number of children with 15% unauthorised absences or more from school	5814	88%
Number of children with school behavioural problems (BIP or equivalent intervention in place)	3747	57%
Number of children with Special Educational Needs	4794	73%
Number of children attending PRU or with some other form of alternative provision	5331	81%
Number of adults in employment	4246	65%
Number of adults receiving out of work benefits	5717	87%
NEETs in household (up to age 25) (current)	4699	71%
<b>Housing and Safeguarding</b>		
Family at risk of eviction (past 6 months, renting families only)	3069*	74%
Family is in rent arrears (current, renting families only)	3082*	75%
Number of children living in care/Looked After Children (LAC)	4887	74%
Number of children on Child Protection Plan	5156	78%
Number of children identified as Child In Need (CIN)	5174	79%
Parenting difficulties identified as issue in family (Key worker assessment) (current)	3796	58%
<b>Crime / Anti-social behaviour</b>		
Adults with a proven offence (past 6 months)	4069	62%
Children or young people (10-17) with a proven offence (past 6 months)	5387	82%
Police callouts to household (past 6 months)	3100	47%
Family members identified as being Prolific and Priority Offenders (PPO) (current)	3057	47%



Adults subject to an ASB intervention (past 6 months)	4126	63%
Children or young people (10-17) subject to an ASB intervention (past 6 months)	4384	67%
Family members notified to MARAC as being a Domestic Violence or Domestic Abuse victim (current)	3154	48%
Family members identified as suffering from Domestic Violence or Domestic Abuse (Practitioner assessed / reported) (current)	3906	60%
Family members with known criminal gang affiliations (nominal) (current)	1164	65% (EGYV areas)
<b>Health</b>		
A family member NOT registered with a local GP (current)	3388	52%
A family member NOT registered with a dentist in area where they live (current)	2746	42%
Adults suffering mental health problems - clinical diagnosis (current)	2955	45%
[ALTERNATIVE] Adults suffering mental health problems - key worker assessment (current)	3096	47%
Children suffering mental health problems - clinical diagnosis (current)	2859	44%
[ALTERNATIVE] Children suffering mental health problems - key worker assessment (current)	2781	42%
Children with ADHD - clinical diagnosis only (current)	2906	44%
Adults dependent on alcohol - clinical diagnosis (current)	2742	42%
[ALTERNATIVE] Adults dependent on alcohol - key worker assessment (current)	2905	44%
Adults receiving treatment for alcohol dependency (current)	2899	44%
Adults dependent on non-prescription drugs - clinical diagnosis (current)	2680	41%
Adults dependent on non-prescription drugs - key worker assessment (current)	3033	46%
Adults receiving treatment for dependency on non-prescription drugs (current)	2950	45%
Young people (under 18) having substance misuse issues that reach threshold for structured treatment (current)	3537	54%
Adults with long-standing illness/disability - clinical diagnosis (current)	2998	46%
[ALTERNATIVE] Adults with long-standing	2833	43

illness/disability - key worker assessment (current)		
Children (0-17) with long-standing illness/disability - clinical diagnosis (current)	2567	39%
[ALTERNATIVE] Children (0-17) with long-standing illness/disability - key worker assessment (current)	2525	39%

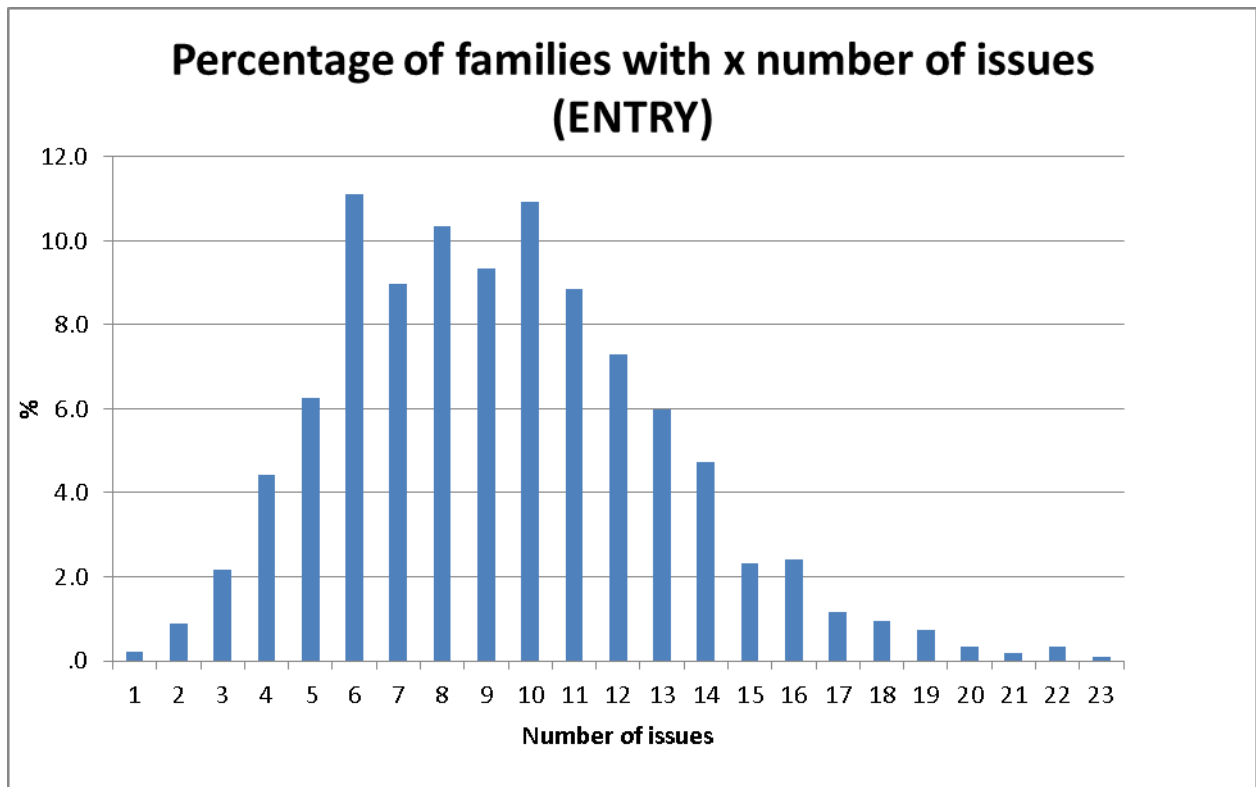
### 1.3 How have Families' Problems Clustered Together?

The following table looks at all indicators<sup>8</sup> at Entry to investigate the total number of problems that families experience. Across all indicators families have nine problems at Entry based on both a mean and median average. The table excludes any family records with missing data on any of the 35 variables including in the composite measure 'Total Issues.' It is important to note that ***this reduces the base number to only a sixth*** of the number of families included in other descriptive information elsewhere in this report and is more likely to include families where the quality of the data is better. This method was chosen to avoid the problem of counting any missing data as a zero when summing to a total, as this might be expected to underestimate the total number of issues facing families. The table below provides an early indication of issues facing families on the programme.

---

<sup>8</sup> Including GP and dentist registration.

<b>Number of issues experienced per family (Entry)</b>		
<b>Number of issues</b>	<b>No. of families</b>	<b>%</b>
0	-	-
1	2	0%
2	8	1%
3	23	2%
4	46	4%
5	66	6%
6	116	11%
7	94	9%
8	108	10%
9	98	9%
10	115	11%
11	93	9%
12	76	7%
13	63	6%
14	50	5%
15	24	2%
16	25	2%
17	12	1%
18	10	1%
19	8	1%
20	3	0%
21	2	0%
22	3	0%
23	1	0%
<b>Total families</b>	<b>1048</b>	<b>100%</b>



The following tables show the number of issues experienced by families for indicators across the domains (i.e. indicator groupings) of: education; employment; housing; safeguarding; crime and antisocial behaviour; and health. Issues are counted, not summed (for example if a family has been subject of multiple police callouts, this would be recorded as one issue). GP and dentist registrations are not included as they do not fit a 'domain', so need to be considered separately. The indicator "family members with known criminal gang affiliations" has been excluded from this analysis as this applies to EGYV (Ending Gang and Youth Violence) areas.

The following five tables follow the methodology used when calculating the 'total' issues above, and exclude family records with missing data on any of the composite variables.

<b>Education issues per family (out of 6) (Entry)</b>	<b>No. of families</b>	<b>%</b>
<i>Permanent exclusions, fixed term exclusions, truanting, behavioural problems, SEN, PRU</i>		
0	517	15%
1	861	25%
2	756	22%
3	616	18%
4	378	11%
5	189	6%
6	67	2%
<i>Total families</i>	3385	100%

<b>Housing issues per family (2) (Entry)</b>	<b>No. of families</b>	<b>%</b>
<b>Rent arrears, facing eviction</b>		
0	2251	67%
1	695	21%
2	439	13%
Total families	3384	100%

<b>Safeguarding issues per family (4) (Entry)</b>	<b>No. of families</b>	<b>%</b>
<b>LAC, Child Protection Plan, Child in Need, Parenting issues</b>		
0	914	28%
1	1619	49%
2	632	19%
3	104	3%
4	16	1%
Total families	3286	100%

<b>Crime-ASB issues (8) (Entry)</b>	<b>No. of</b>	<b>%</b>
-------------------------------------	---------------	----------

	<b>families</b>	
Adult/Child offender, Adult/Child ASB, Police call outs, Priority offenders, MARAC, Practitioner assessed Domestic violence		
0	528	27%
1	499	26%
2	435	22%
3	294	15%
4	124	6%
5	51	3%
6	9	1%
7	4	0%
Total families	1943	100%

<b>Health issues (11) (Entry)</b>	<b>No. of families</b>	<b>%</b>
Adult/child mental health problems, ADHD, Adult drug/alcohol problems, alcohol/drug treatment, child substance misuse problem, adult/child disability, teen conceptions		
0	373	22%
1	272	16%
2	320	19%
3	221	13%
4	177	11%
5	130	8%
6	89	5%
7	41	3%
8	19	1%
9	22	1%
10	6	0%
11	2	0%
Total families	1674	100%

## 1.4 What are the Main Problems Families Encounter?

The following tables show the main problems families encounter on entry <sup>9</sup>. The base (N) in the table below represents the total number of data records provided for each indicator NOT the number of families with the related issue (which would be denoted by lower case n). With this being the first return, N is provided to illustrate relative completeness of submissions. The percentage of families included in the table calculated uses the base number as the denominator.

Education/Employment Issue within Family (Entry)	% families with issue	Base
Children permanently excluded from school (currently)	16%	5291
Children receiving a fixed term (temporary) exclusion from school (previous school term)	31%	5488
Children with 15% unauthorised absences or more from school (previous school term)	56%	5814
Children with school behavioural problems (BIP or equivalent intervention in place) (previous school term)	46%	3747
Children with Special Educational Needs (current)	39%	4794
Children attending PRU or with some other form of alternative provision (current)	28%	5331
Workless households (based on adults in employment in the past 6 months)	74%	4246
Adults receiving out of work benefits (past 6 months)	83%	5717
NEETs in household (up to age 25) (current)	23%	4699

Housing & Safeguarding Issue within Family (Entry)	% families with issue	Base
Family at risk of eviction (past 6 months, renting families only)	21%	3713
Family is in rent arrears (current, renting families only)	27%	3597
Children living in care/Looked After Children (LAC) (current)	7%	4887
Children on Child Protection Plan (current)	12%	5156
Children identified as Child In Need (CIN) (current)	23%	5174
Parenting difficulties identified as issue in family (Key worker assessment) (current)	66%	3796

<b>Crime-ASB Issue within Family (Entry)</b>	<b>% families with issue</b>	<b>Base</b>
Adults with a proven offence (past 6 months)	15%	4069
Children or young people (10-17) with a proven offence (past 6 months)	36%	5387
Police callouts to household (past 6 months)	42%	3100
Family members identified as being Prolific and Priority Offenders (PPO) (current)	6%	3057
Adults subject to an ASB intervention (past 6 months)	11%	4126
Children or young people (10-17) subject to an ASB intervention (past 6 months)	26%	4384
Family members notified to MARAC <sup>10</sup> as being a Domestic Violence or Domestic Abuse victim (current)	8%	3154
Family members identified as suffering from Domestic Violence or Domestic Abuse (Practitioner assessed / reported) (current)	29%	3906
Family members with known criminal gang affiliations (nominal) (current)	7% (all data)	2738
	11% (EGYV areas only)	1164

<b>GP/Dentist Registration within Family (Entry)</b>	<b>% families with issue</b>	<b>Base</b>
A family member NOT registered with a local GP (current)	4%	3190
A family member NOT registered with a dentist in area where they live (current)	10%	2746

<b>Adult and Child Mental Health Issues within Family (Entry)</b> <b>FIGURES IN BOLD ARE COMPOSITE INDICATORS</b>	<b>% families with issue</b>	<b>Base</b>
<b>Adults suffering a mental health problem (either key worker assessment or clinical diagnosis)</b>	<b>46%</b>	<b>3699</b>
<i>Adults suffering mental health problems - clinical diagnosis (current)</i>	36%	2955
<i>[ALTERNATIVE] Adults suffering mental health problems - key worker assessment (current)</i>	35%	3096
<b>Children suffering a mental health problem (either key worker assessment or clinical diagnosis)</b>	<b>33%</b>	<b>3207</b>
<i>Children suffering mental health problems - clinical diagnosis (current)</i>	20%	2859
<i>[ALTERNATIVE] Children suffering mental health problems - key worker assessment (current)</i>	27%	2781

<sup>10</sup> Multi-agency Risk Assessment Conference. See: <https://www.gov.uk/domestic-violence-and-abuse>



Children with ADHD - clinical diagnosis only (current)	20%	2906
--	-----	------

<b>Adult Alcohol Issues within Family (Entry) FIGURES IN BOLD ARE COMPOSITE INDICATORS</b>	<b>% families with issue</b>	<b>Base</b>
<b>Adults dependent on alcohol (either key worker assessment or clinical diagnosis)</b>	<b>14%</b>	<b>3313</b>
<i>Adults dependent on alcohol - clinical diagnosis (current)</i>	7%	2742
<i>[ALTERNATIVE] Adults dependent on alcohol - key worker assessment (current)</i>	13%	2905
Adults receiving treatment for alcohol dependency (current)	4%	2951

<b>Adult Substance Misuse Issues within Family (Entry) FIGURES IN BOLD ARE COMPOSITE INDICATORS</b>	<b>% families with issue</b>	<b>Base</b>
<b>Adults dependent on non-prescription drugs (either key worker assessment or clinical diagnosis)</b>	<b>13%</b>	<b>3404</b>
<i>Adults dependent on non-prescription drugs - clinical diagnosis (current)</i>	7%	2680
<i>Adults dependent on non-prescription drugs - key worker assessment (current)</i>	12%	3033
Adults receiving treatment for dependency on non-prescription drugs (current)	5%	2950

<b>Young People Substance Misuse Issues within Family (Entry)</b>	<b>% families with issue</b>	<b>Base</b>
Young people (under 18) having substance misuse issues that reach threshold for structured treatment (current)	15%	3537

<b>Long-standing Illness within Family (Entry) FIGURES IN BOLD ARE COMPOSITE INDICATORS</b>	<b>% families with issue</b>	<b>Base</b>
<b>Adults with long-standing illness/disability (either key worker assessment or clinical diagnosis)</b>	<b>32%</b>	<b>3472</b>
<i>Adults with long-standing illness/disability - clinical diagnosis (current)</i>	30%	2998
<i>[ALTERNATIVE] Adults with long-standing illness/disability - key worker assessment (current)</i>	19%	2833
<b>Children with long-standing illness/disability (either key worker assessment or clinical diagnosis)</b>	<b>20%</b>	<b>2968</b>
<i>Children (0-17) with long-standing illness/disability - clinical diagnosis (current)</i>	18%	2567
<i>[ALTERNATIVE] Children (0-17) with long-standing illness/disability - key worker assessment (current)</i>	12%	2525

<b>Under 18 conceptions within Family (Entry)</b>	<b>% families with issue</b>	<b>Base</b>
---	------------------------------	-------------

Under 18 conceptions within Family (Entry)	% families with issue	Base
Under 18 conceptions - key worker assessment (current)	5%	3167

## 1.5 What can we say about Individuals?

As most of the indicators asked for numbers of family members experiencing problems/issues, it is possible to identify the total numbers within the cohort. However, it must be noted that, with this first return, a number of blanks exist, and total numbers have not been extrapolated. It does however enable analysis of numbers of a particular issue within a family, which allows an insight into the relative **depth** (or intensiveness) of problems, not just the **breadth** of the different problems.

The total numbers across the cohort, and numbers and percentage within that cohort (of adults or children, as relevant), for families where data was provided (i.e. excluding blanks) are set out in the following table. Please note that not all indicators are included as some do not lend themselves to analysis of individuals (e.g. rent arrears).

In order to explore the range of data provided, Annex One shows the frequency tables for each indicator.

Indicator	Individuals with issue	Number of adults / children in cohort	%
<b>Education, Employment and Training</b>			
Number of children permanently excluded from school	908	13294	7%
Number of children receiving a fixed term (temporary) exclusion from school	2021	13739	15%
Number of children with 15% unauthorised absences or more from school	4227	14440	29%
Number of children with school behavioural problems (BIP or equivalent intervention in place)	2222	9780	23%
Number of children with Special Educational Needs	2585	11983	22%
Number of children attending PRU or with some other form of alternative provision	1621	13391	12%
Number of adults in employment	1405	7126	20%

Number of adults receiving out of work benefits	6105	10016	61%
<b>Housing and Safeguarding</b>			
Number of children living in care/Looked After Children (LAC)	482	12332	4%
Number of children on Child Protection Plan	1420	12930	11%
Number of children identified as Child In Need (CIN)	2424	12949	19%
<b>Crime / Anti-social behaviour</b>			
Number of adults with a proven offence	709	7112	10%
Number of children or young people (10-17) with a proven offence	2185	13357	16%
Number of adults subject to an ASB intervention	528	7097	7%
Number of children or young people (10-17) subject to an ASB intervention	1394	11211	12%
Number of family members notified to MARAC as being a DV or DA victim	373	5140	7%
Number of family members identified as suffering from DV or DA (Practitioner assessed / reported)	1916	6659	29%
<b>Health</b>			
No. of adults w/ mental health problems (diagnosis)	1143	5008	23%
No. of adults w/ mental health problems KW assessment	1198	5371	22%
No. of children w/ mental health problems diagnosis	661	7531	9%
No. of children w/ mental health problems KW assessment	915	7333	12%
No. of children w/ ADHD (diagnosis)	679	7704	9%
No. of adults dependent on alcohol (diagnosis)	196	4630	4%
No. of adults dependent on alcohol (KW assessment)	412	4940	8%

No. of adults receiving treatment for alcohol dependency	133	4901	3%
No. of adults dependent on non-prescription drugs (diagnosis)	222	4506	5%
No. of adults dependent on non-prescription drugs (KW assessment)	401	5184	8%
No. of adults in treatment for dependency on non-prescription drugs	155	4985	3%
No. of children w/ substance misuse issues at threshold for structured treatment	582	9257	6%
No. of under 18 conceptions (KW assessment)	166	8337	2%
Number of adults with long-standing illness/disability (Clinical diagnosis)	1011	5079	20%
Number of adults with long-standing illness/disability (KW assessment)	616	4833	13%
Number of children (0-17) with long-standing illness/disability (Clinical diagnosis)	575	6822	8%
Number of children (0-17) with long-standing illness/disability (KW assessment)	355	6610	5%

## 1.6 What are the Characteristics of Families?

Troubled Families programmes work with very disadvantaged families, including a higher than average proportion of lone parents (49% compared to 16% in the general UK population<sup>11</sup>). In 15% of cases the programmes are supporting families with three or more adults, which may include young people aged over 18. The tables in this section of the report includes valid percentages (proportion of non-missing sample), missing data are also reported where applicable.

Number of adults per family (Entry)	No. of families	%
-------------------------------------	-----------------	---

<sup>11</sup> <http://www.ons.gov.uk/ons/rel/family-demography/families-and-households/2013/stb-families.html>

1	3203	49%
2	2380	36%
3	674	10%
4	207	3%
5	71	1%
6	33	1%
7	5	1%
8	3	0%
12	2	0%
Total families	6577	100%

On average a family in this sample comprises 1.7 adults and 2.5 children. The UK average is 1.7 children per family<sup>12</sup>, although this excludes non-dependent children. Forty per cent of households in this sample have three or more children, compared to the national average of 14%<sup>13</sup>. Ten per cent of the cohort has five or more children and 25% of parents have a child under 5 years old.

Overall there are 11,449 adults and 16,277 children in the sample.

Number of children per family (Entry)	No. of families	%
1	1921	29%
2	2054	31%
3	1267	19%
4	692	11%
5	349	5%
6	188	3%
7	66	1%
8	31	1%
9	7	0%
10	1	0%
11	1	0%
12	1	0%
Total families	6577	100%

Number of children under 5 years old per family (Entry)	No. of families	%
0	4348	75%
1	1021	18%
2	345	6%
3	61	1%

---

<sup>12</sup> <http://www.ons.gov.uk/ons/rel/family-demography/family-size/2012/family-size-rpt.html>

<sup>13</sup> *ibid*

4	8	0%
5	1	0%
6	1	0%
Total families	5786	100%
Blanks	792	
Grand total	6577	

Where the ethnicity is known, predominately the primary carers in families within the sample are White British (78% of families where ethnicity is known), which is similar to the national picture where just under 80% are White British across England<sup>14</sup>. In all other cases where ethnicity is known, other ethnic groups make up 3% or less of the families.

Ethnic group per family (Entry)	No. of families	%
White British	3074	66%
Other White	138	3%
Other	116	2%
Black or Black British - Caribbean	103	2%
Mixed - White and Black	96	2%
Black or Black British - African	91	2%
Other Mixed	73	2%
Other Black	64	1%
Asian or Asian British - Pakistani	55	1%
Other Asian	51	1%
Asian or Asian British - Bangladeshi	47	1%
White Irish	41	1%
Mixed - White and Asian	16	0%
Asian or Asian British - Indian	12	0%
Chinese	2	0%
Not known	675	15%
Total families	4654	100%
Blanks	1923	
Grand total	6577	

---

<sup>14</sup> ONS 2011 Census: KS201EW Ethnic group, local authorities in England and Wales.

Eighty seven per cent of families rent their homes: most families (70%) rent homes from the local authority or housing association; and a further 18% rent in the private sector.

<b>Housing tenure per family (Entry)</b>	<b>No. of families</b>	<b>%</b>
Housing Association or LA rent	2897	70%
Private rent	756	18%
Temporary accommodation	246	6%
Home owner	216	5%
No fixed abode	18	0%
Total families	4133	100%
Blanks	2444	
Grand total	6577	

### **1.7 Next Steps**

This report is based on the first return of Family Monitoring Data for the Troubled Families programme, and, as such, local authorities are expected to provide more complete data in subsequent returns. We expect more complete information to be provided as local authorities improve their access to information about the families they are working with, including changes of circumstances at the point of closure.









## A1. Annex One: Frequency Tables for Indicators at Entry

Key:

- All analyses in the annex were carried out on the total number of families in the sample (6577). Valid percentages are used and missing data are reported where applicable.
- A dash (-) means that there are no families with this characteristic.
- A zero (0) means that there are a small number of families with this characteristic, but due to weighting this represents less than 1.

Also, see 1.2 which explains the limitations of the dataset.

Number of children permanently excluded from school	No. of families	%
0	4456	84%
1	773	15%
2	56	1%
3	4	0%
4	1	0%
5	-	-
6	-	-
7	1	0%
<b>Total families</b>	<b>5291</b>	
<i>Blanks</i>	1286	
<b>Grand total</b>	<b>6577</b>	

Number of children receiving a fixed term (temporary) exclusion from school	No. of families	%
0	3779	69%
1	1450	26%
2	209	4%
3	46	1%
4	-	0%

5	2	0%
6	1	0%
9	-	0%
<b>Total families</b>	<b>5488</b>	
<b><i>Blanks</i></b>	1089	
<b>Grand total</b>	<b>6577</b>	

Number of children with +15% unauthorised absences or more from school	No. of families	%
0	2589	45%
1	2479	43%
2	565	10%
3	129	2%
4	31	1%
5	15	0%
6	3	0%
7	2	0%
<b>Total families</b>	<b>5814</b>	
<i>Blanks</i>	763	
<b>Grand total</b>	<b>6577</b>	

Number of children with school behavioural problems (BIP or equivalent intervention in place)	No. of families	%
0	2010	54%
1	1349	36%
2	313	8%
3	53	1%
4	20	1%
5	1	0%
6	-	-
7	-	-
8	1	0%
<b>Total families</b>	<b>3747</b>	
<i>Blanks</i>	2831	
<b>Grand total</b>	<b>6577</b>	

Number of children with Special Educational Needs	No. of families	%
0	2916	61%
1	1378	29%
2	343	7%
3	111	2%
4	31	1%
5	13	0%
6	2	0%
7	0	0%
8	0	0%
9	-	-
10	0	0%
<b>Total families</b>	<b>4794</b>	
<b>Blanks</b>	<b>1784</b>	
<b>Grand total</b>	<b>6577</b>	

Number of children attending PRU or with some other form of alternative provision	No. of families	%
0	3859	72%
1	1340	25%
2	118	2%
3	14	0%
4	0	0%
<b>Total families</b>	<b>5331</b>	
<b>Blanks</b>	<b>1246</b>	
<b>Grand total</b>	<b>6577</b>	

Number of adults in employment	No. of families	%
0	3123	74%
1	891	21%
2	190	5%
3	29	1%
4	12	0%

5	-	-
6	0	0%
<b>Total families</b>	<b>4246</b>	
<b><i>Blanks</i></b>	2332	
<b>Grand total</b>	<b>6577</b>	

Number of adults receiving out of work benefits	No. of families	%
0	975	17%
1	3610	63%
2	995	17%
3	136	2%
4	31	1%
5	6	0%
6	4	0%
<b>Total families</b>	<b>5717</b>	
<i>Blanks</i>	860	
<b>Grand total</b>	<b>6577</b>	

Number of NEETs in household (up to age 25)	No. of families	%
0	3625	77%
1	862	18%
2	183	4%
3	25	1%
4	5	0%
5	-	-
6	1	0%
<b>Total families</b>	<b>4934</b>	
<i>Blanks</i>	2,207	
<b>Grand total</b>	<b>7141</b>	

Family at risk of eviction (renting families only)	No. of families	%
No	2074	78%
Yes	586	22%
<b>Total families</b>	<b>2660</b>	
<i>Blanks</i>	993	
<b>Grand total of renting families only</b>	<b>3653</b>	



<b>Family is in rent arrears (renting families only)</b>	<b>No. of families</b>	<b>%</b>
No	1900	71%
Yes	775	29%
<b>Total families</b>	<b>2675</b>	
<i>Blanks</i>	978	
<b>Grand total of renting families only</b>	<b>3653</b>	

Number of children living in care/Looked After Children (LAC)	No. of families	%
0	4565	94%
1	233	5%
2	49	1%
3	23	1%
4	11	0%
5	5	0%
6	3	0%
<b>Total families</b>	<b>4887</b>	
<i>Blanks</i>	1690	
<b>Grand total</b>	<b>6577</b>	

Number of children on Child Protection Plan	No. of families	%
0	4533	88%
1	239	5%
2	176	3%
3	93	2%
4	55	1%
5	30	1%
6	22	0%
7	4	0%
8	3	0%
<b>Total families</b>	<b>5156</b>	
<i>Blanks</i>	1422	
<b>Grand total</b>	<b>6577</b>	

Number of children identified as Child In Need (CIN)	No. of families	%
0	3978	77%
1	616	12%
2	264	5%
3	165	3%
4	64	1%

5	48	1%
6	23	0%
7	23	0%
8	2	0%
<b>Total families</b>	<b>5174</b>	
<b>Blanks</b>	1404	
<b>Grand total</b>	<b>6577</b>	

Parenting difficulties identified as issue in family (Key worker assessment)	No. of families	%
No	1127	31%
Yes	2548	69%
<b>Total families</b>	<b>3675</b>	
<b>Blanks</b>	2902	
<b>Grand total</b>	<b>6577</b>	

Number of adults with a proven offence	No. of families	%
0	3456	85%
1	534	13%
2	63	2%
3	13	0%
4	1	0%
5	0	0%
6	3	0%
<b>Total families</b>	<b>4069</b>	
<b>Blanks</b>	2509	
<b>Grand total</b>	<b>6577</b>	

Number of children or young people (10-17) with a proven offence	No. of families	%
0	3438	64%
1	1752	33%
2	170	3%
3	18	0%
4	4	0%

5	-	-
6	1	0%
7	1	0%
8	2	0%
<b>Total families</b>	<b>5387</b>	
<b><i>Blanks</i></b>	1191	
<b>Grand total</b>	<b>6577</b>	

Number of police callouts to household	No. of families	%
0	1784	58%
1	389	13%
2	281	9%
3	171	6%
4	115	4%
5	73	2%
6	58	2%
7	23	1%
8	20	1%
9	15	1%
10	42	1%
11	13	0%
12	15	1%
13	11	0%
14	7	0%
15	16	1%
16	4	0%
17	3	0%
18	5	0%
19	7	0%
20	12	0%
21	1	0%
22	3	0%
23	1	0%
24	1	0%
25	1	0%
26	2	0%
27-28	-	-
29	2	0%
30	4	0%
31	-	-
32	1	0%
33	1	0%
34	1	0%
35	1	0%

36	1	0%
37-39	-	-
40	9	0%
41	-	-
42	2	0%
43	-	-
44	1	0%
45-46	-	-
47	1	0%
48-50	-	-
51	0	0%
52	1	0%
53-77	-	-
78	1	0%
79-89	-	-
90	1	0%
<b>Total families</b>	<b>3100</b>	
<b>Blanks</b>	<b>3477</b>	
<b>Grand total</b>	<b>6577</b>	

<b>Number of family members identified as being Prolific and Priority Offenders (PPO)</b>	<b>No. of families</b>	<b>%</b>
0	2890	95%
1	154	5%
2	11	0%
3	1	0%
4	1	0%
<b>Total families</b>	<b>3057</b>	
<b>Blanks</b>	<b>3521</b>	
<b>Grand total</b>	<b>6577</b>	

<b>Number of adults subject to an ASB intervention</b>	<b>No. of families</b>	<b>%</b>
0	3686	89%
1	367	9%

2	64	2%
3	7	0%
4	2	0%
5	-	-
6	-	-
7	1	0%
<b>Total families</b>	<b>4126</b>	
<b><i>Blanks</i></b>	<b>2451</b>	
<b>Grand total</b>	<b>6577</b>	

<b>Number of children or young people (10-17) subject to an ASB intervention</b>	<b>No. of families</b>	<b>%</b>
0	3249	75%
1	954	21%
2	131	3%
3	30	1%
4	13	0%
5	3	0%
6	2	0%
7	1	0%
8	1	0%
<b>Total families</b>	<b>4384</b>	
<i>Blanks</i>	2193	
<b>Grand total</b>	<b>6577</b>	

<b>Number of family members notified to MARAC as being a DV or DA victim</b>	<b>No. of families</b>	<b>%</b>
0	2892	92%
1	226	7%
2	14	0%
3	11	0%
4	4	0%
5	5	0%
6	-	0%
7	1	0%
<b>Total families</b>	<b>3153</b>	
<i>Blanks</i>	3424	
<b>Grand total</b>	<b>6577</b>	



Number of family members identified as suffering from DV or DA (Practitioner assessed / reported)	No. of families	%
0	2767	70%
1	836	21%
2	108	3%
3	76	2%
4	42	1%
5	33	1%
6	24	1%
7	10	0%
8	4	0%
9	4	0%
10	-	0%
11	-	0%
12	-	0%
13	1	0%
<b>Total families</b>	<b>3905</b>	
<i>Blanks</i>	2672	
<b>Grand total</b>	<b>6577</b>	

Family members with known criminal gang affiliations (nominal)	No. of families	%
0	2544	93%
1	194	7%
<b>Total families</b>	<b>2738</b>	
<i>Blanks</i>	3839	
<b>Grand total</b>	<b>6577</b>	

Family member registered w/ GP	No. of families	%
None	100	3%
Some	158	5%
Most	214	7%
All	2825	86%

<b>Total families</b>	<b>3297</b>	
<b><i>Blanks</i></b>	<b>3280</b>	
<b>Grand total</b>	<b>6577</b>	

Family member registered w/ Dentist	No. of families	%
None	228	9%
Some	169	6%
Most	166	6%
All	2118	79%
<b>Total families</b>	<b>2681</b>	
<i>Blanks</i>	3896	
<b>Grand total</b>	<b>6577</b>	

No. of adults w/ mental health problems (diagnosis)	No. of families	%
0	1899	64%
1	972	33%
2	82	3%
3	2	0%
<b>Total families</b>	<b>2955</b>	
<i>Blanks</i>	3622	
<b>Grand total</b>	<b>6577</b>	

No. of adults w/ mental health problems KW assessment	No. of families	%
0	2018	65%
1	963	31%
2	109	4%
3	4	0%
4	1	0%
<b>Total families</b>	<b>3095</b>	
<i>Blanks</i>	3482	
<b>Grand total</b>	<b>6577</b>	

No. of children w/ mental health problems diagnosis	No. of families	%
0	2301	81%

1	469	16%
2	74	3%
3	11	0%
4	3	0%
5	1	0%
<b>Total families</b>	<b>2859</b>	
<i>Blanks</i>	3718	
<b>Grand total</b>	<b>6577</b>	

No. of children w/ mental health problems KW assessment	No. of families	%
0	2024	73%
1	651	23%
2	84	3%
3	14	1%
4	5	0%
5	2	0%
6	2	0%
7	-	-
8	1	0%
<b>Total families</b>	<b>2782</b>	
<i>Blanks</i>	3795	
<b>Grand total</b>	<b>6577</b>	

No. of children w/ ADHD (diagnosis)	No. of families	%
0	2321	80%
1	500	17%
2	77	3%
3	8	0%
<b>Total families</b>	<b>2906</b>	
<i>Blanks</i>	3671	
<b>Grand total</b>	<b>6577</b>	

No. of adults dependent on alcohol (diagnosis)	No. of families	%
--	-----------------	---

0	2557	93%
1	173	6%
2	10	0%
3	1	0%
<b>Total families</b>	<b>2741</b>	
<b><i>Blanks</i></b>	<b>3836</b>	
<b>Grand total</b>	<b>6577</b>	

No. of adults dependent on alcohol (KW assessment)	No. of families	%
0	2524	87%
1	355	12%
2	24	1%
3	1	0%
4	-	-
5	1	0%
<b>Total families</b>	<b>2905</b>	
<i>Blanks</i>	3672	
<b>Grand total</b>	<b>6577</b>	

No. of adults receiving treatment for alcohol dependency	No. of families	%
0	2778	96%
1	111	4%
2	9	0%
3	-	-
4	-	-
5	1	0%
<b>Total families</b>	<b>2899</b>	
<i>Blanks</i>	3678	
<b>Grand total</b>	<b>6577</b>	

No. of adults dependent on non-prescription drugs (diagnosis)	No. of families	%
0	2492	93%
1	156	6%
2	29	1%
3	2	0%
<b>Total families</b>	<b>2679</b>	
<i>Blanks</i>	3898	
<b>Grand total</b>	<b>6577</b>	

No. of adults dependent on non-prescription drugs (KW assessment)	No. of families	%
0	2686	89%
1	300	10%
2	42	1%
3	5	0%
<b>Total families</b>	<b>3033</b>	
<i>Blanks</i>	3544	
<b>Grand total</b>	<b>6577</b>	

No. of adults in treatment for dependency on non-prescription drugs	No. of families	%
0	2816	95%
1	115	4%
2	19	1%
<b>Total families</b>	<b>2950</b>	
<i>Blanks</i>	3627	
<b>Grand total</b>	<b>6577</b>	

No. of children w/ substance misuse issues at threshold for structured treatment	No. of families	%
0	3010	85%
1	473	13%
2	51	1%
3	2	0%
<b>Total families</b>	<b>3536</b>	
<i>Blanks</i>	3041	
<b>Grand total</b>	<b>6577</b>	

No. of under 18	No. of families	%
-----------------	-----------------	---

conceptions (KW assessment)		
0	3020	95%
1	133	4%
2	5	0%
3	6	0%
4	-	-
5	1	0%
<b>Total families</b>	<b>3165</b>	
<i>Blanks</i>	3413	
<b>Grand total</b>	<b>6577</b>	

Number of adults with long-standing illness/disability (Clinical diagnosis)	No. of families	%
0	2102	70%
1	779	26%
2	98	3%
3	5	0%
4	1	0%
5	1	0%
6	-	-
7	-	-
<b>Total families</b>	<b>2986</b>	
<i>Blanks</i>	3591	
<b>Grand total</b>	<b>6577</b>	

Number of adults with long-standing illness/disability (KW assessment)	No. of families	%
0	2303	81%
1	458	16%
2	57	2%
3	7	0%
4	5	0%



5	-	-
6	1	0%
7	-	-
<b>Total families</b>	<b>2831</b>	
<i>Blanks</i>	3746	
<b>Grand total</b>	<b>6577</b>	

<b>Number of children (0-17) with long-standing illness/disability (Clinical diagnosis)</b>	<b>No. of families</b>	<b>%</b>
0	2105	82%
1	373	15%
2	71	3%
3	10	0%
4	8	0%
5	0	0%
<b>Total families</b>	<b>2567</b>	
<i>Blanks</i>	4010	
<b>Grand total</b>	<b>6577</b>	

<b>Number of children (0-17) with long-standing illness/disability (KW assessment)</b>	<b>No. of families</b>	<b>%</b>
0	2229	88%
1	249	10%
2	36	1%
3	8	0%
4	4	0%
5	0	0%
<b>Total families</b>	<b>2526</b>	
<i>Blanks</i>	4051	
<b>Grand total</b>	<b>6577</b>	

