

# **Monthly Statistics of Building Materials and Components**

July 2011

No. 437

## NOTES

In tables where figures have been rounded to the nearest final digit, there may be an apparent slight discrepancy between the sum of the constituent items and the total as shown.

Symbols. The following symbols have been used throughout.

.. = not available (P) = provisional

- = nil or negligible (R) = revised

All figures are subject to revision.

Unless otherwise stated, revisions are due to more complete information from late returns. If any figures are revised by 5% or more from the previously published value, an explanation will be provided.

### **A National Statistics publication**

National Statistics are produced to high professional standards set out in the National Statistics Code of Practice. They undergo regular quality assurance reviews to ensure they meet customer needs.

Unless otherwise stated, the statistics published in this volume have been collected by the Office for National Statistics on behalf of the Department for Business, Innovation & Skills.

Lead Statistician: Tony Wilkins

For enquiries or further information about the contents of this publication please contact:

Construction Market Intelligence, 1 Victoria Street,  
London, SW1H 0ET;  
Telephone : 020 - 7215 - 3092 Fax : 020 - 7215 - 6910  
E-mail : [materialstats@bis.gsi.gov.uk](mailto:materialstats@bis.gsi.gov.uk).

URN 11/313g

3 August 2011

## CONTENTS

	<u>Page</u>
Table 1 : Construction Material Price Indices	1
Table 2 : Price Indices of Construction Materials – monthly	2 & 3
Table 3 : Price Indices of Construction Materials – annual averages	4
Table 4 : Sales of Sand and Gravel in Great Britain	5
Table 5 : Sales of Sand and Gravel by English Regions, Wales and Scotland	6 & 7
Table 6 : Sales of Sand and Gravel by English and Welsh Counties and Scottish Regions	8 & 9
Table 7 : Slate : Production, Deliveries and Stocks	10
Chart 1 : Deliveries of Sand & Gravel and Ready-Mixed Concrete	11
Table 8 : Cement and Clinker : Production, Deliveries and Stocks	12
Chart 2 : Deliveries of Bricks, Concrete Building Blocks and Cement	13
Table 9 : Bricks : Production, Deliveries and Stocks for Great Britain	14 & 15
Table 10 : Bricks : Production, Deliveries and Stocks by English Regions, Wales and Scotland	16 to 19
Table 11 : Concrete Building Blocks : Production, Deliveries and Stocks for Great Britain	20 & 21
Table 12 : Concrete Building Blocks : Production, Deliveries and Stocks by English Regions, Wales and Scotland	22 & 23
Table 13 : Concrete Roofing Tiles; Fibre Cement Products; Ready-Mixed Concrete	24
Chart 3 : Comparison of Imports and Exports	25
Table 14 : Value of Overseas Trade in Selected Materials and Components for Constructional Use : Imports (cif) and Exports (fob)	26 to 35



**Table 1: Construction Material Price Indices**

United Kingdom	2005 = 100					
	2006	2007	2008	2009	2010	2011
<b>(a) New Housing</b>						
January	101.6	109.8	115.3	119.7	122.3	130.1
February	102.6	111.7	116.8	120.6	122.9	131.2
March	103.4	112.4	117.5	120.6	123.4	132.0
April	103.6	112.3	118.2	120.2	125.2	132.7 (P)
May	104.6	113.7	119.0	119.8	127.2	134.0 (P)
June	105.8	114.4	118.7	119.5	128.3	134.9 (P)
July	106.5	115.2	120.0	119.1	129.0	
August	107.6	116.3	120.5	120.2	129.5	
September	107.7	116.3	120.4	121.0	129.9	
October	108.8	116.4	121.1	121.7	129.8	
November	109.5	116.0	120.4	122.6	130.2	
December	110.0	115.8	119.7	122.3	129.9	
Annual Average	106.0	114.2	119.0	120.6	127.3	
<b>(b) Other New Work</b>						
January	100.5	110.1	114.3	122.9	124.6	135.1
February	101.7	111.7	116.2	122.1	125.0	137.1
March	102.7	112.1	117.3	121.6	125.9	139.1
April	103.1	112.0	119.2	120.7	129.4	139.2 (P)
May	104.4	112.9	121.6	120.7	132.0	142.7 (P)
June	105.6	113.3	123.7	120.7	133.8	143.4 (P)
July	106.8	113.9	126.4	120.7	133.1	
August	108.3	114.8	127.7	120.9	132.8	
September	108.7	114.4	128.6	121.8	132.9	
October	109.5	114.5	129.3	123.5	132.5	
November	109.6	114.0	126.6	125.3	132.3	
December	109.9	113.6	124.7	125.0	132.3	
Annual Average	105.9	113.1	123.0	122.2	130.6	
<b>(c) Repair and Maintenance</b>						
January	101.6	111.0	116.0	122.1	125.2	134.3
February	102.4	112.9	117.2	122.0	126.1	135.7
March	103.5	113.5	117.9	121.6	126.4	136.7
April	103.9	113.3	119.2	121.2	128.4	137.9 (P)
May	104.8	114.4	120.4	121.0	131.0	139.1 (P)
June	106.1	115.3	121.2	120.7	132.2	140.1 (P)
July	106.9	116.0	122.9	120.6	132.9	
August	108.5	116.9	123.7	121.7	133.4	
September	109.0	117.2	123.8	122.8	133.7	
October	110.2	117.2	124.7	123.9	133.7	
November	110.8	116.6	123.5	125.2	134.2	
December	111.4	116.4	122.4	125.0	133.8	
Annual Average	106.6	115.1	121.1	122.3	130.9	
<b>(d) All Work</b>						
January	101.2	110.6	115.3	122.5	124.6	134.2
February	102.1	112.3	116.9	122.0	125.2	135.9
March	103.1	112.8	117.9	121.6	125.9	137.4
April	103.5	112.6	119.2	121.0	128.5	138.0 (P)
May	104.7	113.8	121.0	120.9	131.0	140.7 (P)
June	105.8	114.3	122.3	120.7	132.6	141.3 (P)
July	106.9	114.7	124.4	120.6	132.4	
August	108.4	115.8	125.7	121.1	132.5	
September	108.7	116.0	126.2	122.1	132.5	
October	109.8	116.0	126.9	123.4	132.2	
November	110.2	115.5	125.0	124.9	132.4	
December	110.6	115.2	123.5	124.7	132.0	
Annual Average	106.3	114.1	122.0	122.1	130.2	

Note: These indices are weighted averages of Producer Price Indices. They do not include electrical or mechanical engineering materials.

Source ONS/BIS

# PRICES

## Table 2: Price Indices of Construction Materials

United Kingdom

		2010						
		Jun	Jul	Aug	Sep	Oct	Nov	Dec
<b>AGGREGATES</b>								
Crushed rock	- including levy	113.4	119.4	120.7	118.6	117.4	118.6	120.1
	- excluding levy	107.4	114.5	117.2	115.0	113.4	115.1	118.5
Sand & gravel	- including levy	119.3	120.0	122.6	122.7	122.2	122.5	122.3
	- excluding levy	119.3	119.7	123.1	123.0	122.5	122.8	122.1
Coated roadstone	- including levy	153.3	150.7	148.9	149.1	..	..	..
	- excluding levy	155.4	152.7	150.9	151.2	..	..	..
Previous Index Crushed rock	- including levy	107.2	120.5	120.6	120.6	..	..	..
	- excluding levy	101.0	118.1	118.2	118.3	..	..	..
Previous Index Sand & gravel	- including levy	107.1	107.0	106.0	106.0	..	..	..
	- excluding levy	101.6	101.5	100.3	100.4	..	..	..
<b>CEMENT AND CONCRETE</b>								
Cement		133.7	133.4	133.3	133.3	133.1	133.2	133.0
Ready-mixed concrete		111.4	111.3	110.1	110.9	111.1	110.4	111.3
Pre-cast concrete products		116.9	117.3	117.2	117.4	118.1	118.1	118.3
	of which : Blocks, bricks, tiles & flagstones	120.4	120.8	120.7	120.8	121.7	121.8	122.1
Concrete reinforcing bars		153.0	150.1	149.2	149.4	147.5	145.3	146.3
<b>CLAY PRODUCTS</b>								
All Bricks		119.9	119.6	121.2	120.4	119.8	119.3	118.9
Ceramic tiles		91.4	91.4	91.4	91.1	91.1	91.5	91.5
Ceramic sanitaryware		134.8	135.3	135.3	135.3	135.3	135.3	135.3
<b>TIMBER AND JOINERY</b>								
Imported sawn or planed wood		154.1	157.5	159.3	159.3	160.6	159.2	157.8
Imported plywood		123.1	122.3	122.1	122.7	122.2	120.8	121.5
Previous Index Imported hardwood *		141.8	142.1	141.6	141.9	..	..	..
Previous Index Imported softwood *		160.0	164.5	167.2	167.6	..	..	..
Previous Index Imported plywood *		167.0	165.3	164.9	166.2	..	..	..
Sawn wood		131.4	136.6	137.9	139.7	139.9	138.8	138.4
Particle Board		117.6	118.4	118.7	119.0	120.2	123.3	123.7
Builders woodwork		124.7	126.1	127.1	127.6	127.6	127.9	128.6
	of which : Doors & windows	130.0	131.8	132.1	133.2	132.7	132.4	132.6
<b>METAL PRODUCTS</b>								
Fabricated structural steel		125.8	130.2	130.0	128.4	125.8	124.0	122.0
Doors & windows**		90.6	90.6	92.1	92.5	92.1	92.1	93.0
Central heating boilers *		113.8	113.8	113.7	113.7	114.0	114.2	116.1
Taps and Valves for sanitaryware *		159.5	159.1	159.1	159.1	159.1	159.4	159.5
<b>PLASTIC PRODUCTS</b>								
Pipes and fittings (rigid)		120.0	120.7	123.3	123.7	123.8	123.0	123.5
Pipes and fittings (flexible)**		129.4	131.8	132.3	132.3	132.3	132.3	132.3
Sanitaryware		114.5	114.5	114.5	114.5	115.2	115.2	115.2
Doors & windows**		107.8	108.0	108.0	108.0	107.9	108.8	108.9
<b>OTHER BUILDING MATERIALS</b>								
Asphalt products *		160.3	161.4	164.6	162.9	165.3	163.8	167.8
Insulating materials (thermal or acoustic) **		102.2	102.5	102.3	102.7	104.2	103.6	103.1
Paint (aqueous)		..	..	..	..	..	..	..
Paint (non-aqueous)**		113.6	113.8	113.9	114.1	114.2	115.4	115.5
Lighting equipment for buildings*		109.7	109.7	103.9	103.9	104.7	104.7	104.7
Lighting equipment for roads		110.5	111.1	111.1	111.1	111.1	111.1	111.1
Electric water heaters *		137.7	137.7	138.3	138.4	137.2	137.8	138.4
Kitchen furniture		110.6	111.4	111.2	111.2	110.3	108.6	108.6

Notes : 1. Most of these indices, which are compiled by the Office for National Statistics, are a selection of producer price indices. The complete list is available online at [www.statistics.gov.uk](http://www.statistics.gov.uk), by searching for the reference MM22.

\*The Office for National Statistics state that these Indices are based on relatively few quotes and in the long term should not be relied upon for contractual purposes.

\* \* These index values are considered less reliable mainly due to lack of market coverage.

2005=100

2011						
Jan	Feb	Mar	Apr	May	Jun	
				(P)	(P)	
						<b>AGGREGATES</b>
122.8	117.3	117.4	119.4	120.8	121.5	Crushed rock - including levy
122.3	117.0	117.0	119.6	121.2	121.9	- excluding levy
123.7	119.4	119.8 (P)	119.8 (P)	119.1	119.1	Sand & gravel - including levy
124.0	118.5	118.9 (P)	119.0 (P)	120.2	118.2	- excluding levy
..	..	..	..	..	..	Coated roadstone - including levy
..	..	..	..	..	..	- excluding levy
..	..	..	..	..	..	Previous Index Crushed rock - including levy
..	..	..	..	..	..	- excluding levy
..	..	..	..	..	..	Previous Index Sand & gravel - including levy
..	..	..	..	..	..	- excluding levy
						<b>CEMENT AND CONCRETE</b>
134.3	134.5	135.0	134.7	134.9	135.1	Cement
112.8	111.3	111.1	112.3	114.4	114.4	Ready-mixed concrete
119.4	121.0	121.2	121.0	121.0	121.4	Pre-cast concrete products
123.2	125.5	125.7	125.3	125.4	125.8	of which : Blocks, bricks, tiles & flagstones
160.1	165.4	165.2	173.4 (P)	174.5	173.3	Concrete reinforcing bars
						<b>CLAY PRODUCTS</b>
117.2	118.1	117.3	118.3	119.5	119.5	All Bricks
91.3	90.5	90.7 (P)	91.7 (P)	91.3	91.5	Ceramic tiles
137.2	137.2	137.3	148.9	148.9	148.9	Ceramic sanitaryware
						<b>TIMBER AND JOINERY</b>
155.1	153.8	152.8	152.5	153.2	153.7	Imported sawn or planed wood
114.2	114.0	115.2	116.3	117.0	118.1	Imported plywood
..	..	..	..	..	..	Previous Index Imported hardwood *
..	..	..	..	..	..	Previous Index Imported softwood *
..	..	..	..	..	..	Previous Index Imported plywood *
137.1	137.0	141.1	141.3	143.1	142.9	Sawn wood
124.4	126.7	128.2 (R)	129.2	130.6	132.1	Particle Board
127.7	128.8	128.8	129.0	129.3	129.6	Builders woodwork
132.6	135.5	135.6	135.7	136.5	136.6	of which : Doors & windows
						<b>METAL PRODUCTS</b>
122.8	126.2	130.1	133.8 (P)	139.6	139.9	Fabricated structural steel
93.2	93.2	93.3	93.5	93.4	93.6	Doors & windows**
117.2	117.2	117.2 (P)	117.2 (P)	117.2	117.5	Central heating boilers *
161.1	163.5	164.3 (P)	166.7 (P)	166.7	168.1	Taps and Valves for sanitaryware *
						<b>PLASTIC PRODUCTS</b>
123.9	123.6	124.0	126.0 (P)	127.1	127.2	Pipes and fittings (rigid)
132.3	132.3	132.3 (P)	132.3 (P)	131.4	132.7	Pipes and fittings (flexible)**
115.4	115.4	115.4	115.4	116.0	116.0	Sanitaryware
108.7	108.8	110.0 (P)	110.0 (P)	109.9	110.1	Doors & windows **
						<b>OTHER BUILDING MATERIALS</b>
173.6	174.9	174.6	172.5	172.5	174.4	Asphalt products *
102.9	103.3	105.5	110.6	108.6	109.3	Insulating materials (thermal or acoustic)**
..	..	..	..	..	..	Paint (aqueous)
119.9	119.9	119.9	119.9	121.0	121.4	Paint (non-aqueous)**
105.2	105.4	105.4	105.4	105.4	..	Lighting equipment for buildings*
111.3	111.5	112.9	112.9	112.9	113.8	Lighting equipment for roads
138.6	139.0	143.3	141.4	141.5	141.5	Electric water heaters*
108.9	109.0	109.0	109.2	109.2	109.9	Kitchen furniture

Source : ONS

Note: Due to the change from SIC03 to SIC07 the composition of the Aggregate and Wood Indices has been altered. As such we will publish the Previous Indices alongside the Current Indices.

# PRICES

## Table 3: Price Indices of Construction Materials - Annual Averages

United Kingdom		2005=100					
		2005	2006	2007	2008	2009	2010
<b>AGGREGATES</b>							
Crushed rock	- including levy	..	..	..	..	110.0	115.5
	- excluding levy	..	..	..	..	103.1	110.8
Sand & gravel	- including levy	..	..	..	..	116.2	121.1
	- excluding levy	..	..	..	..	115.8	121.1
Coated roadstone	- including levy	100.0	108.2	113.8	130.0	140.8	..
	- excluding levy	99.9	107.5	113.7	129.7	140.4	..
Previous Index Crushed rock	- including levy	98.6	96.1	95.2	103.4	112.3	..
	- excluding levy	98.4	94.5	93.6	100.6	108.4	..
Previous Index Sand & Gravel	- including levy	101.2	105.3	109.9	117.5	112.0	..
	- excluding levy	100.9	105.7	110.9	116.3	107.5	..
<b>CEMENT AND CONCRETE</b>							
Cement		100.0	108.8	114.7	128.4	138.5	133.2
Ready-mixed concrete		100.6	107.7	106.7	113.4	110.8	110.5
Plasterboard etc		100.1	99.3	101.8	104.7	..	..
Pre-cast concrete products		100.0	102.3	110.6	114.4	118.7	117.4
	of which: Blocks, bricks, tiles & flagstones	100.0	103.3	112.8	115.4	121.1	121.0
Concrete re-inforcing bars		100.0	112.9	129.8	158.3	125.9	144.6
Fibre Cement Products		100.1	106.7	116.8	124.2	..	..
<b>CLAY PRODUCTS</b>							
All Bricks		98.0	104.3	111.1	109.0	117.2	118.8
Ceramic tiles		98.7	102.0	84.8	81.0	82.6	90.1
Ceramic sanitaryware		100.1	102.5	112.6	119.9	130.7	134.4
<b>TIMBER AND JOINERY</b>							
Imported sawn or planed wood		..	..	..	..	127.9	152.5
Imported plywood		..	..	..	..	110.2	119.0
Previous Index Imported Softwood		100.3	107.9	133.6	123.6	127.5	..
Previous Index Imported Plywood		100.1	100.8	106.5	120.7	124.1	..
Sawn Wood		100.0	103.1	122.0	127.8	118.7	135.1
Particle Board		99.4	102.6	112.7	113.8	111.4	117.3
Builders woodwork		99.4	102.2	108.0	113.6	119.7	125.5
	of which						
	Doors & windows	99.7	101.7	108.7	116.7	127.1	130.9
<b>METAL PRODUCTS</b>							
Fabricated structural steel		100.0	99.8	118.1	137.2	106.0	117.9
Doors & windows		101.4	101.2	87.5	87.0	89.8	91.2
Screws etc		94.4	106.1	105.9	106.6	..	..
Other builders' ironmongery		99.9	102.4	105.3	108.5	..	..
Central heating boilers		99.9	102.3	105.0	106.3	109.8	113.4
Central heating pumps		100.7	108.2	114.5	120.2	..	..
Taps & valves (domestic)		98.7	..	..	136.6	152.1	158.2
Metal sanitaryware		100.0	103.5	108.3	106.3	..	..
Copper pipes		108.5	168.1	163.2	154.1	..	..
<b>PLASTIC PRODUCTS</b>							
Pipes and fittings (rigid)		99.2	103.9	112.2	118.1	121.4	121.5
Pipes and fittings (flexible)		99.8	104.4	110.6	115.3	129.9	130.3
Sanitaryware		100.2	100.9	102.6	112.0	113.7	114.7
Doors & windows		99.9	101.3	103.5	106.2	107.9	108.1
Floor covering		100.1	107.8	109.8	..	..	..
<b>OTHER BUILDING MATERIALS</b>							
Asphalt products		98.4	120.6	132.2	140.4	151.4	162.1
Insulating materials (thermal or acoustic)		99.9	102.5	106.0	105.6	104.0	103.2
Paint (aqueous)		99.8	101.7	104.6	112.7	118.3	..
Paint (non-aqueous)		99.7	100.8	102.6	110.0	113.0	114.0
Lighting equipment for buildings		100.1	..	..	102.3	107.4	107.5
Lighting equipment for roads		99.5	98.7	100.9	105.2	112.3	110.6
Electric heating apparatus		100.0	101.8	105.4	112.0	..	..
Electric water heaters		100.4	111.6	119.8	122.3	132.6	136.7
Kitchen furniture		100.0	96.7	99.7	103.6	106.6	109.1

Source : ONS

Note 1: Due to the change from SIC03 to SIC07 the composition of the Aggregate and Wood Indices has been altered. As such we will publish the Previous Indices alongside the Current Indices.

Note 2: These indices, which are compiled by the Office for National Statistics, are a selection of producer price indices. The complete list is published monthly by the ONS in the Business Monitor MM22.



# MINING AND QUARRYING

**Table 4 : Sales of Sand and Gravel in Great Britain**

Great Britain		Thousand tonnes					
	<b>Sand</b>		<b>Gravel</b>	<b>Sand &amp; Gravel</b>	<b>Sand, Gravel &amp; Hoggin</b>	<b>Sand &amp; Gravel</b>	of which
	for Building	for Concreting	for Concreting & other uses	for Coating	for Fill	Total	<b>Marine-Dredged</b>
2000	12,105	30,128	30,355	2,150	13,127	87,865	14,356
2001	13,926	33,675	36,799	2,596	10,460	97,456	13,611
2002	11,152	30,334	35,642	2,106	6,279	85,513	12,833
2003	11,474	31,349	31,725	1,493	6,498	82,539	12,249
2004	11,017	32,366	30,184	1,380	6,399	81,346	12,996
2005	12,419	30,704	30,648	1,569	5,173	80,513	13,025
2006	9,499	29,893	31,963	2,346	4,195	77,896	13,974
2007	8,649	29,803	31,114	1,695	4,254	75,515	13,777
2008	8,864	28,922	28,297	..	..	74,651	12,582
2009	7,270	21,582	..	..	..	58,482	9,589
2010	6,074	19,887	..	..	..	54,530	9,341
2005 Q1	3,141	7,180	7,271	376	986	18,954	3,040
Q2	3,467	8,490	8,226	439	1,553	22,175	3,519
Q3	3,246	8,054	8,201	398	1,422	21,321	3,491
Q4	2,565	6,980	6,950	356	1,212	18,063	2,975
2006 Q1	2,189	7,100	7,058	523	919	17,789	2,927
Q2	2,582	8,126	9,032	623	1,174	21,537	4,531
Q3	2,603	7,725	8,602	640	1,144	20,714	3,498
Q4	2,125	6,942	7,271	560	958	17,856	3,018
2007 Q1	2,081	6,919	7,242	443	904	17,589	3,177
Q2	2,305	7,762	8,202	432	1,179	19,880	3,596
Q3	2,304	7,829	8,191	398	1,162	19,884	3,675
Q4	1,959	7,293	7,479	422	1,009	18,162	3,329
2008 Q1	2,151	7,156	7,286	379	1,180	18,152	3,035
Q2	2,385	7,724	7,668	456	2,041	20,274	3,541
Q3	2,279	7,644	7,091	..	..	19,341	3,337
Q4	2,049	6,398	6,252	490	1,695	16,884	2,669
2009 Q1	1,727	5,313	5,330	695	1,566	14,631	2,389
Q2	1,916	5,637	5,756	..	..	15,359	2,637
Q3	1,992	5,598	..	..	..	14,878	2,457
Q4	1,635	5,034	..	..	1,432	13,614	2,106
2010 Q1	1,539	4,952	..	..	..	13,711	2,131
Q2	1,585	4,983	..	..	..	13,940	2,444
Q3	1,584	5,268	..	..	..	14,112	2,592
Q4	1,366	4,684	..	..	..	12,767	2,174
2011 Q1	1,572	5,665	..	..	..	14,150	2,746

Note : The figures above are from a quarterly sample inquiry whereas those below are from the Annual Minerals Raised Inquiry, a census.

The two inquiries differ because some respondents are only able to provide estimated information for the quarterly inquiry.

1999	11,356	31,730	31,614	2,585	10,924	88,209	13,424
2000	11,758	31,167	31,797	2,461	12,051	89,234	14,356
2001	11,515	31,656	35,135	2,257	7,647	88,210	13,611
2002	11,190	31,224	32,434	2,031	5,842	82,721	12,832
2003	11,851	31,411	30,236	1,766	4,957	80,221	12,131
2004	10,688	32,529	32,346	2,437	8,058	86,057	12,996
2005	11,558	29,848	32,163	2,172	6,651	82,392	13,024
2006	9,907	29,815	31,002	2,648	6,869	80,242	13,974
2007	9,877	30,202	29,350	2,636	6,436	78,501	13,777
2008	8,527	26,885	23,388	2,222	11,106	72,127	12,621
2009	6,296	21,570	19,553	2,270	6,021	55,709	9,592

# MINING AND QUARRYING

**Table 5 : Sales of Sand and Gravel by Standard region, Wales and Scotland**

	<b>Sand</b>		<b>Gravel</b>	<b>Sand &amp; Gravel</b>	<b>Sand, Gravel &amp; Hoggin</b>	<b>Sand &amp; Gravel</b>	of which
	for Building	for Concreting	for Concreting & other uses	for Coating	for Fill	Total	<b>Marine-Dredged</b>
<u>(a) Q1 2011</u>							
North East	21	..	..	..	92	..	..
Yorkshire & the Humber	124	326	306	..	88	..	..
North West	190	238	..	29	..	497	26
West Midlands	148	639	593	..	..	1,472	0
East Midlands	109	598	490	..	..	1,370	0
East of England	242	1,023	900	..	179	..	..
South East	266	1,352	1,680	53	223	3,574	2,181
South West	160	689	235	..	..	1,495	122
Wales	106	..	85	..	20	345	174
Scotland	206	522	560	148	213	1,649	0
Great Britain	1,572	5,665	..	..	..	14,150	2,746
of which marine-dredged	127	1,321	..	..	..	2,746	
<u>(b) Q1 2010</u>							
North East	15	..	..	..	39	..	..
Yorkshire & the Humber	101	..	288	526	..	..	..
North West	196	216	24	41	32	509	23
West Midlands	..	602	681	..	44	1,567	0
East Midlands	110	648	575	62	47	1,442	0
East of England	222	742	871	..	158	..	75
South East	289	1,105	1,291	45	288	3,018	1,666
South West	118	494	..	..	257	1,306	101
Wales	113	..	..	..	42	465	172
Scotland	..	511	496	110	..	1,537	0
Great Britain	1,539	4,952	..	..	..	13,711	2,131
of which marine-dredged	110	962	..	..	..	2,131	

Note : Regions refer to Government Office Regions

# MINING AND QUARRYING

Thousand tonnes

	<b>Sand</b> for Building	<b>Sand</b> for Concreting	<b>Gravel</b> for Concreting & other uses	<b>Sand &amp; Gravel</b> for Coating	<b>Sand, Gravel &amp; Hoggin</b> for Fill	<b>Sand &amp; Gravel</b> Total	of which <b>Marine- Dredged</b>
<u>(c) Annual 2010</u>							
North East	71	..	..	..	136	..	..
Yorkshire & the Humber	455	..	1,160	2,104	..	..	..
North West	873	..	..	167	..	1,956	97
West Midlands	..	2,136	2,624	..	..	5,704	0
East Midlands	438	2,380	2,106	236	259	5,419	0
East of England	871	3,180	3,571	..	674	..	..
South East	945	4,756	5,567	214	969	12,451	7,249
South West	538	2,072	..	..	1,132	5,697	453
Wales	548	..	..	..	175	1,730	732
Scotland	..	2,130	1,940	441	..	5,942	0
Great Britain	6,074	19,887	..	..	..	54,530	9,341
of which marine-dredged	534	4,300	..	..	..	9,341	
<u>(d) Annual 2009</u>							
North East	76	..	..	..	..	..	..
Yorkshire & the Humber	659	1,356	1,362	278	198	3,853	53
North West	811	1,055	..	104	..	2,327	132
West Midlands	885	2,855	3,104	..	287	..	0
East Midlands	542	2,630	2,609	114	318	6,213	0
East of England	..	..	..	619	..	..	..
South East	..	4,626	..	..	1,293	14,036	7,318
South West	..	2,314	..	..	987	..	451
Wales	537	..	..	..	..	..	..
Scotland	692	2,150	1,722	425	736	5,725	0
Great Britain	7,270	21,582	..	..	..	58,482	9,589
of which marine-dredged	524	4,200	..	..	..	9,589	

Note : Regions refer to Government Office Regions

# MINING AND QUARRYING

## Table 6 : Sales of Sand and Gravel by English & Welsh County and Scottish Region

Thousand tonnes

	2009	2010	2011			
	Quarter 4	Quarter 1	Quarter 2	Quarter 3	Quarter 4	Quarter 1
<b>NORTH EAST</b>	..	..	..	..	366	465
Northumberland	283	238	236	253	236	261
Tyne and Wear *	..	..	..	..	28	..
Durham	..	..	..	..	..	..
Cleveland *	..	..	..	..	..	..
<b>YORKSHIRE &amp; THE HUMBER</b>	822	..	..	..	1,202	..
North Yorkshire	429	402	385	434	357	479
West Yorkshire	34	49	50	53	44	44
South Yorkshire	179	625	628	640	609	..
Humberside *	180	200	..	..	192	..
<b>NORTH WEST</b>	538	509	474	497	476	497
Cumbria	138	143	127	130	125	127
Lancashire	70	69	69	72	69	47
Merseyside *	32	23	19	28	27	26
Greater Manchester	70	69	64	66	63	71
Cheshire	228	205	195	201	192	226
<b>WEST MIDLANDS</b>	1,712	1,567	1,426	1,395	1,316	1,472
Shropshire	..	128	..	117	111	152
Staffordshire	1,098	1,090	1,007	971	917	914
West Midlands	..	..	..	..	56	..
Warwickshire	193	126	117	..	107	172
Hereford & Worcester	184	..	131	133	125	..
<b>EAST MIDLANDS</b>	1,484	1,442	1,281	1,452	1,244	1,370
Derbyshire	..	212	188	212	..	204
Nottinghamshire	464	454	400	449	387	365
Leicestershire	251	221	194	..	..	228
Northamptonshire	..	58	52	..	50	69
Lincolnshire	492	497	447	509	438	504
<b>EAST OF ENGLAND</b>	..	..	..	..	..	..
Cambridgeshire	519	500	522	551	488	528
Norfolk	331	368	369	386	337	336
Suffolk *	..	..	..	..	..	..
Essex *	..	..	..	..	..	..
Bedfordshire	290	270	256	..	..	..
Hertfordshire	159	165	..	..	..	..
<b>SOUTH EAST</b>	3,330	3,018	3,161	3,254	3,018	3,574
Buckinghamshire	128	107	104	104	116	93
Oxfordshire	200	97	88	80	89	73
Berkshire	316	187	177	176	203	206
Greater London *	856	806	820	908	..	947
Surrey	220	229	226	217	227	221
Kent *	779	772	805	836	714	976
Sussex East *	..	..	..	..	..	..
Sussex West *	..	..	..	164	144	..
Hampshire *	575	573	621	623	560	676
Isle of Wight	..	..	..	..	..	..

Note : Regions refer to Government Office Regions

\* Includes marine-dredged.

# MINING AND QUARRYING

Thousand tonnes

	2009	2010	2011			
	Quarter 4	Quarter 1	Quarter 2	Quarter 3	Quarter 4	Quarter 1
<b>SOUTH WEST</b>	1,265	1,306	1,540	1,507	1,344	1,495
Gloucestershire	235	283	339	335	279	..
Wiltshire	175	196	230	226	200	161
Avon *	..	..	..	88	..	..
Somerset *	..	..	..	..	..	..
Dorset *	..	..	..	..	..	..
Devon *	..	..	..	..	157	..
Cornwall	..	..	..	243	..	428
<b>ENGLAND</b>	11,837	11,709	11,827	12,250	11,072	12,156
<b>WALES</b>	448	465	483	410	372	345
Clwyd	..	211	200	154	146	102
Gwynedd *	..	..	..	..	..	..
Powys	0	0	0	0	0	0
Dyfed *	..	..	..	82	..	..
Glamorgan West *	..	..	..	..	..	..
Glamorgan Mid	..	..	..	..	..	2
Glamorgan South *	..	..	..	32	..	..
Gwent *	80	74	..	..	..	..
<b>SCOTLAND</b>	1,329	1,537	1,630	1,452	1,323	1,649
South of Scotland	124	96	106	92	92	94
North East Scotland	144	219	223	201	175	285
Highlands	119	134	136	122	108	146
Island Areas	19	12	12	10	11	16
East Central Scotland	97	100	99	88	86	100
West Central Scotland	453	557	593	529	492	613
Tayside and Fife	373	419	461	410	359	395
<b>GREAT BRITAIN</b>	13,614	13,711	13,940	14,112	12,767	14,150

Note : Regions refer to Government Office Regions

\* Includes marine-dredged.

# MINING AND QUARRYING

## Table 7 : Slate - Production, Deliveries and Stocks

Great Britain

Tonnes

	Production			Deliveries			Stocks (a)			Deliveries
	Roofing (b)	Other (c)	Powder & Granules	Roofing (b)	Other (c)	Powder & Granules	Roofing (b)	Other (c)	Powder & Granules	Fill & Other Uses
1999	28,265	18,733	51,872	33,569	13,740	52,648	10,049	6,829	3,135	190,581
2000	28,815	12,399	44,644	33,341	11,670	44,923	5,519	7,356	2,856	328,547
2001	30,770	14,834	47,521	33,052	13,586	47,588	3,159	8,465	2,799	383,353
2002	32,182	18,348	44,424	32,653	19,069	43,947	2,674	7,850	3,275	498,212
2003	34,471	15,623	29,003	34,700	14,576	29,240	2,477	8,849	3,416	669,818
2004	..	..	..	..	..	..	..	..	..	..
2005	..	..	..	..	..	..	2,824	10,281	5,347	..
2006 (P)	..	61,612	22,967	..	64,037	22,719	..	6,454	4,274	860,395
2007	..	65,260	19,141	..	62,646	19,431	2,563	2,521	3,746	..
2008	..	59,644	16,915	..	58,129	18,402	..	2,749	2,253	..
2009	..	33,759	9,150	22,555	34,322	10,637	2,420	2,186	766	615,346
2010	..	28,001	..	..	27,355	..	..	3,063	..	582,111
2003 Q1	8,436	3,492	8,077	7,545	3,108	7,887	3,570	8,188	3,417	177,974
Q2	8,635	4,364	7,335	9,028	4,132	7,230	3,177	8,420	3,523	172,954
Q3	8,195	4,120	6,685	8,679	4,196	7,333	2,693	8,344	2,875	151,403
Q4	9,205	3,647	6,906	9,448	3,140	6,790	2,477	8,849	3,416	167,487
2004 Q1	9,397	4,432	7,288	8,379	4,619	7,460	3,469	8,777	3,242	158,552
Q2	9,031	3,596	8,083	10,135	3,499	7,328	2,365	8,874	3,997	154,407
Q3	..	8,029	7,544	..	8,578	7,049	3,954	8,225	4,592	158,333
Q4	..	..	..	..	..	..	..	..	..	..
2005 Q1	..	..	..	..	..	..	..	..	..	..
Q2	..	..	..	..	..	..	..	..	..	..
Q3	..	..	..	..	..	..	..	..	..	..
Q4	..	13,635	7,448	..	6,194	7,635	2,824	10,281	5,347	124,188
2006 Q1	..	11,594	6,575	..	12,879	6,406	3,170	8,967	5,440	195,762
Q2	..	14,804	5,051	..	14,983	5,257	3,079	7,424	3,990	223,696
Q3	..	16,170	5,194	..	16,803	5,094	..	6,792	4,090	251,314
Q4 (P)	..	19,044	6,147	..	19,372	5,962	..	6,454	4,274	189,623
2007 Q1	..	17,787	5,571	..	16,829	5,036	6,984	4,996	4,571	376,876
Q2	..	16,577	4,315	..	14,765	4,875	3,066	5,850	4,011	346,426
Q3	..	16,017	4,672	..	15,475	4,929	2,977	6,391	3,754	..
Q4	..	14,879	4,583	..	15,577	4,591	2,563	2,521	3,746	255,249
2008 Q1	..	18,608	4,282	..	18,071	4,414	..	3,059	3,594	246,495
Q2	..	15,465	4,738	..	14,457	4,862	..	3,801	3,484	..
Q3	..	13,811	3,843	..	13,841	5,511	3,851	2,749	1,816	..
Q4	..	11,760	4,052	..	11,760	3,615	..	2,749	2,253	..
2009 Q1	..	7,370	2,128	5,315	7,688	2,724	..	2,431	1,658	148,722
Q2	5,084	9,124	2,046	5,328	9,319	3,385	4,142	2,236	318	169,661
Q3	5,503	8,263	2,046	6,534	8,267	2,163	3,111	2,232	201	154,862
Q4	4,687	9,002	2,930	5,378	9,048	2,365	2,420	2,186	766	142,101
2010 Q1	..	6,772	..	..	6,662	..	..	2,296	..	88,805
Q2	..	7,517	..	..	7,388	..	2,049	3,284	683	175,098
Q3	..	7,335	..	..	7,184	..	1,326	3,332	281	159,574
Q4	4,907	6,377	..	4,909	6,121	..	..	3,063	..	158,634
2011 Q1	4,736	6,516	3,314	4,449	6,504	3,399	..	3,029	..	198,547

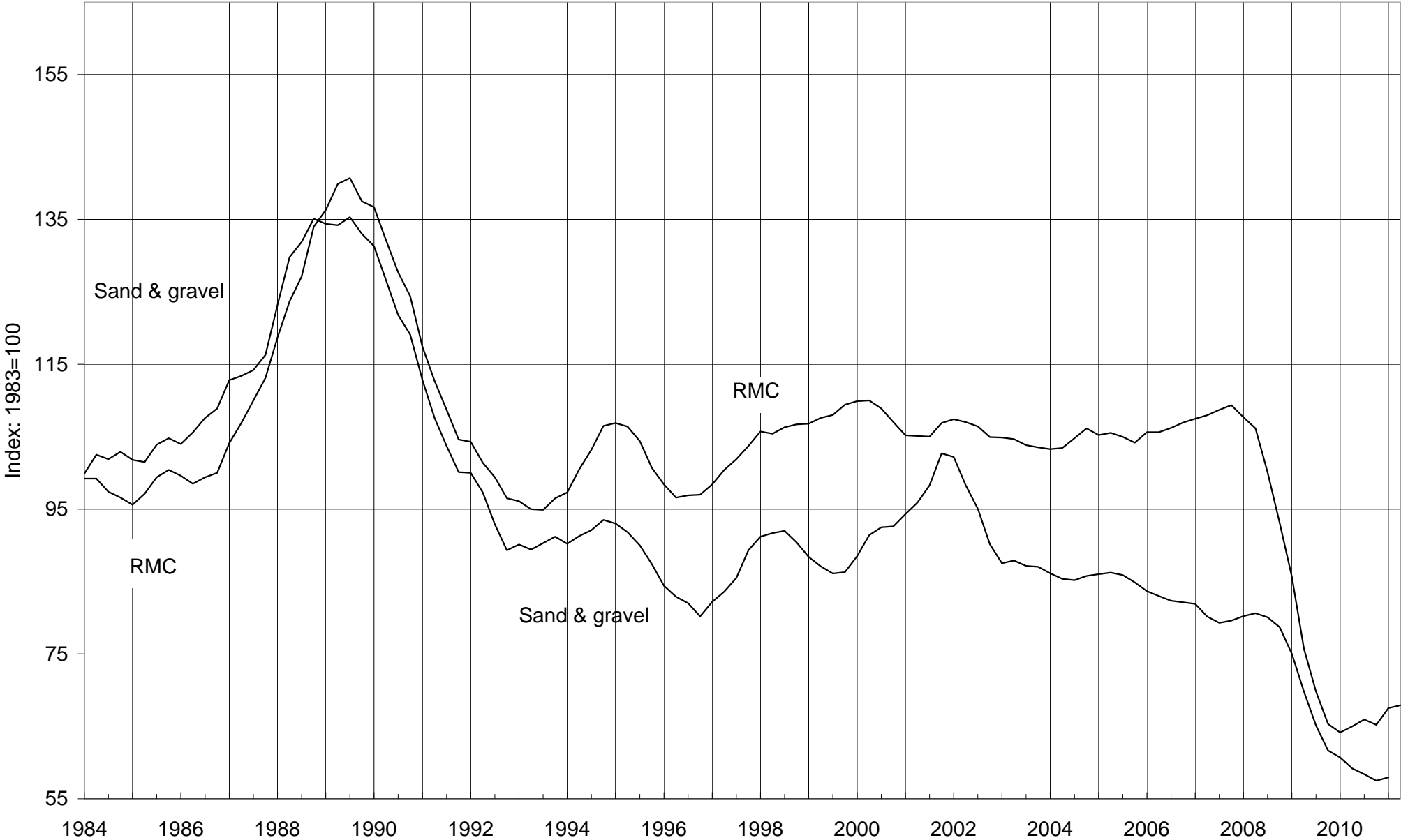
Note : 1) We have improved our sampling panel to include some new sites and have removed some non-pure slate sites. In line with the Code of Practice we have revised the data for Q2, Q3 and Q4 2010.

2) From Q1 1995, the coverage of 'powder & granules' has been extended to include non-quarry manufacture; and 'crude blocks' are included in 'other' manufacture slate.

- (a) Refers to stocks at the end of the period.
- (b) Consists of all slate tiles which could be used as roofing tiles.
- (c) Consists of all slate products for cladding and decorative uses

# Deliveries of Sand & Gravel and RMC

4-quarter moving average



The data is taken from Tables 4 & 13

**Table 8 : Cement & Clinker - Production, Deliveries and Stocks**

Great Britain

Thousand tonnes

		Cement					Cementitious Material		Clinker
		Production	Exports	Deliveries	Imports (into GB)		other	total	Production
		of which	(from GB)	(into GB from GB production)	by 'Manuf.	by Others**			
2005		11,216	110	11,004	306	971	2,385	14,666	10,074
2006		11,469	127	11,221	124	1,089	2,648	15,082	10,069
2007		11,887	74	11,638	255	1,121	2,769	15,783	10,227
2008		10,071	61	9,937	283	1,084	2,432	13,660	8,700
2009		7,623	21	7,474	99	1,085	1,680	10,338	6,421
2010		7,883	0	7,767	61	1,153	1,535	10,515	6,598
2005	Q2	3,024	30	2,986	70	264	632	3,952	2,669
	Q3	2,940	29	2,923	77	264	666	3,930	2,576
	Q4	2,708	30	2,540	55	218	540	3,353	2,636
2006	Q1	2,647	25	2,737	28	269	601	3,635	2,127
	Q2	2,981	30	2,895	32	268	692	3,887	2,622
	Q3	2,990	37	2,917	40	303	732	3,992	2,654
	Q4	2,851	35	2,672	24	249	623	3,568	2,666
2007	Q1	2,678	27	2,779	43	271	643	3,735	2,021
	Q2	3,188	22	3,061	59	297	701	4,117	2,812
	Q3	3,130	9	3,011	84	294	746	4,135	2,751
	Q4	2,891	16	2,787	69	259	681	3,796	2,643
2008	Q1	2,609	18	2,551	88	268	598	3,505	2,267
	Q2	2,803	18	2,816	94	327	682	3,917	2,366
	Q3	2,520	13	2,496	72	263	648	3,445	2,202
	Q4	2,139	12	2,074	29	226	505	2,793	1,865
2009	Q1	1,762	14	1,782	37	256	410	2,485	1,378
	Q2	2,004	1	1,970	21	279	451	2,721	1,587
	Q3	1,998	5	1,999	25	283	453	2,760	1,831
	Q4	1,859	1	1,723	17	268	366	2,373	1,624
2010	Q1	1,726	0	1,744	24	246	336	2,350	1,261
	Q2	2,157	0	2,154	8	345	416	2,923	1,745
	Q3	2,203	0	2,195	17	310	450	2,971	1,880
	Q4	1,796	0	1,674	12	252	332	2,270	1,713
2011	Q1	1,979	0	2,043	12	281	402	2,738	1,427
2010	May	732	0	703	4	..	..	..	567
	Jun	750	0	767	4	..	..	..	645
	Jul	804	0	766	9	..	..	..	619
	Aug	688	0	688	4	..	..	..	642
	Sep	711	0	741	4	..	..	..	619
	Oct	741	0	702	4	..	..	..	600
	Nov	687	0	662	4	..	..	..	591
	Dec	368	0	310	4	..	..	..	523
2011	Jan	521	0	570	4	..	..	..	367
	Feb	669	0	668	0	..	..	..	519
	Mar	789	0	805	8	..	..	..	541
	Apr	725	0	652	8	..	..	..	559
	May	737	0	744	8	..	..	..	633

**NB** Where the coverage is for Great Britain, the figures for imports & exports are defined accordingly and have been estimated.

Cementitious material covers cement itself, pulverised fuel ash (pfa) to BS 3892 Part 1 and ground granulated blast-furnace slag (ggbs) to BS 6699

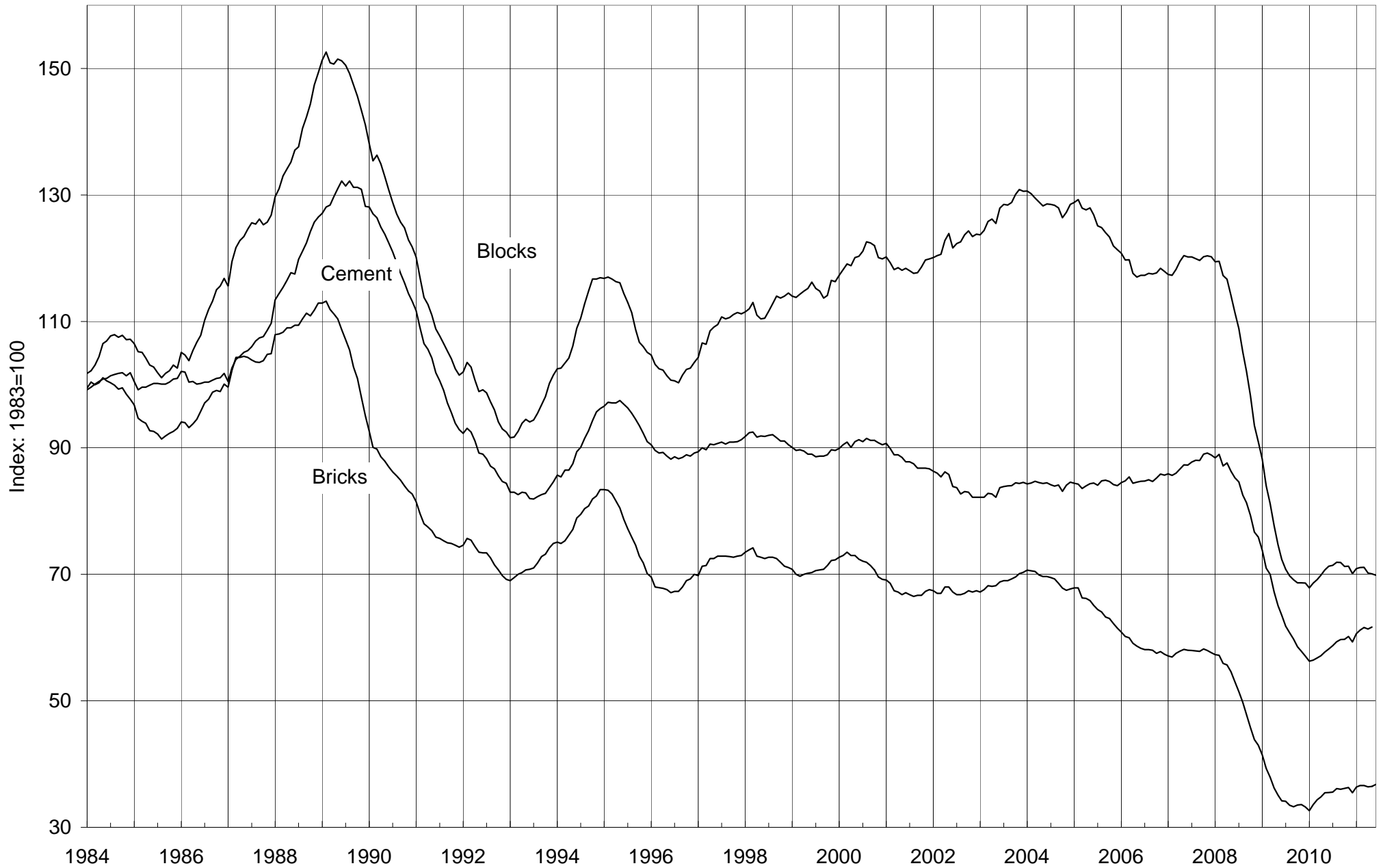
\* Refers to stocks at end of period

\*\* Estimated



# Deliveries of Bricks, Blocks & Cement

12-month moving totals



The data is taken from tables 8, 9 and 11

**Table 9 : Bricks - Production, Deliveries and Stocks**

Great Britain

		Production	Deliveries (from)	Stocks*	Production	Deliveries (from)	Stocks*
<b>(a) Brick Type</b>		All Types			Commons		
2006		2,510	2,399	906	304	284	137
2007		2,471	2,409	965	305	291	150
2008		1,929	1,796	1,105	246	242	151
2009		1,216	1,388	921	187	200	134
2010		1,350	1,483	778	176	170	138
2010	Q2	376	431	807	46	51	128
	Q3	355	406	751	45	44	131
	Q4	335	308	778	42	35	138
2011	Q1	357	385	674	42	42	95
	Q2 (P)	424	438	662	46	50	90
2010	June	114	139	807	13	14	128
	July	120	144	781	17	16	130
	August	107	129	755	14	13	131
	September	128	133	751	14	15	131
	October	144	143	753	17	16	131
	November	118	117	754	15	12	134
	December	72	48	778	11	6	138
2011	January	83	95	771	10	10	139
	February	126	130	687	14	14	94
	March	148	160	674	17	17	95
	April	139	132	681	14	15	93
	May	146	154	675	16	17	92
	June (P)	139	152	662	16	18	90
<b>(b) Material Type</b>		All Materials			Clay#		
2006		2,510	2,399	906	2,359	2,254	887
2007		2,471	2,409	965	2,312	2,249	947
2008		1,929	1,796	1,105	1,814	1,676	1,093
2009		1,216	1,388	921	..	..	..
2010		1,350	1,483	778	..	..	..
2010	Q2	376	431	807	..	..	..
	Q3	355	406	751	..	..	..
	Q4	335	308	778	..	..	..
2011	Q1	357	385	674	..	..	..
	Q2 (P)	424	438	662	..	..	..
2010	June	114	139	807	..	..	..
	July	120	144	781	..	..	..
	August	107	129	755	..	..	..
	September	128	133	751	..	..	..
	October	144	143	753	..	..	..
	November	118	117	754	..	..	..
	December	72	48	778	..	..	..
2011	January	83	95	771	..	..	..
	February	126	130	687	..	..	..
	March	148	160	674	..	..	..
	April	139	132	681	..	..	..
	May	146	154	675	..	..	..
	June (P)	139	152	662	..	..	..

\* Refers to stocks at end of period

#Sand-lime bricks are included with clay bricks

Millions

Production	Deliveries (from)	Stocks*	Production	Deliveries (from)	Stocks*	
						<b>(a) Brick Type</b>
Facings			Engineering			
2,013	1,923	710	193	192	58	2006
1,950	1,906	753	216	212	62	2007
1,514	1,386	895	170	168	58	2008
927	1,079	735	103	109	52	2009
1,047	1,181	594	126	133	46	2010
297	343	633	33	38	45	2010 Q2
278	326	579	32	37	41	Q3
255	241	594	37	32	46	Q4
278	305	542	37	38	37	2011 Q1
336	345	535	42	43	36	Q2 (P)
92	113	633	9	12	45	2010 June
94	119	606	9	10	45	July
83	103	582	10	12	43	August
101	104	579	13	15	41	September
114	112	581	14	14	40	October
91	93	579	13	12	41	November
51	36	594	10	6	46	December
62	75	585	11	10	47	2011 January
100	104	553	12	12	40	February
116	127	542	14	16	37	March
110	104	549	14	13	39	April
117	122	547	12	15	36	May
108	120	535	15	15	36	June (P)
						<b>(b) Material Type</b>
Sand-Lime#			Concrete			
..	..	..	150	146	19	2006
..	..	..	159	160	18	2007
..	..	..	115	120	11	2008
..	..	..	..	..	..	2009
..	..	..	..	..	..	2010
..	..	..	..	..	..	2010 Q2
..	..	..	..	..	..	Q3
..	..	..	..	..	..	Q4
..	..	..	..	..	..	2011 Q1
..	..	..	..	..	..	Q2 (P)
..	..	..	..	..	..	2010 June
..	..	..	..	..	..	July
..	..	..	..	..	..	August
..	..	..	..	..	..	September
..	..	..	..	..	..	October
..	..	..	..	..	..	November
..	..	..	..	..	..	December
..	..	..	..	..	..	2011 January
..	..	..	..	..	..	February
..	..	..	..	..	..	March
..	..	..	..	..	..	April
..	..	..	..	..	..	May
..	..	..	..	..	..	June (P)

Note: As of February 2011 we have improved our sampling panel to include some new sites, this has created a slight discontinuity in the data. If the data becomes available we will construct a revised back series.

**Table 10 : Brick Production, Deliveries and Stocks by English region, Wales and Scotland**

	North East	Yorks & Humber	North West	West Midlands	East Midlands	East of England
<b>(a) Commons</b>				#		#
Production						
2010	..	..	9,499	..	44,766	..
2010 Q2	..	..	2,822	..	11,346	..
Q3	..	865	2,277	..	10,871	..
Q4	..	961	2,375	..	12,249	..
2011 Q1	..	..	2,141	..	13,119	..
2011 May	..	236	1,120	579	4,515	..
Deliveries (from)						
2010	..	4,301	9,071	..	40,793	..
2010 Q2	..	1,612	2,686	..	11,820	..
Q3	..	904	2,695	..	11,078	..
Q4	..	795	1,768	..	9,469	..
2011 Q1	..	1,002	2,083	..	11,170	..
2011 May	..	361	623	1,335	3,871	..
Stocks *						
2010	2,917	3,086	5,342	7,815	13,343	..
2010 Q2	1,656	2,959	5,153	4,021	9,572	..
Q3	2,435	2,920	4,735	5,934	10,575	..
Q4	2,917	3,086	5,342	7,815	13,343	..
2011 Q1	2,817	2,374	4,792	7,843	14,850	..
2011 May	3,003	2,170	5,525	6,398	16,225	..
<b>(b) Facings</b>						
Production						
2010	..	61,277	..	288,995	240,113	..
2010 Q2	..	15,610	15,927	81,083	61,253	..
Q3	..	17,000	15,242	81,073	65,405	..
Q4	..	16,235	13,873	70,096	64,893	..
2011 Q1	..	16,285	18,957	59,899	80,725	..
2011 May	..	6,112	7,003	31,763	28,597	..
Deliveries (from)						
2010	..	76,725	91,127	323,362	..	..
2010 Q2	..	22,445	27,179	93,260	69,438	..
Q3	..	21,820	24,831	89,225	67,269	..
Q4	..	14,703	18,442	64,540	53,014	..
2011 Q1	..	20,029	21,027	74,009	73,231	..
2011 May	..	6,739	8,131	29,294	30,373	..
Stocks *						
2010	35,831	27,311	60,145	108,408	..	..
2010 Q2	..	30,599	74,303	114,899	..	..
Q3	38,227	25,779	64,714	103,080	121,389	..
Q4	35,831	27,311	60,145	108,408	..	..
2011 Q1	31,397	19,672	40,872	90,832	176,024	..
2011 May	..	19,982	39,817	95,627	..	..
<b>(c) Engineering #</b>						
Production						
2010	..	..	..	84,198	0	..
2010 Q2	..	..	..	23,437	0	..
Q3	..	..	..	21,843	0	..
Q4	..	..	..	22,476	0	..
2011 Q1	..	..	..	23,529	..	..
2011 May	..	..	..	7,908	..	..
Deliveries (from)						
2010	..	..	..	84,889	..	..
2010 Q2	..	..	..	24,585	..	..
Q3	..	..	..	22,975	..	..
Q4	..	..	..	21,121	..	..
2011 Q1	..	..	..	23,986	..	..
2011 May	..	..	2,296	9,587	..	..
Stocks *						
2010	..	..	3,674	10,898	..	..
2010 Q2	..	..	..	10,727	..	..
Q3	..	..	2,240	9,595	..	..
Q4	..	..	3,674	10,898	..	..
2011 Q1	..	..	3,497	9,723	..	..
2011 May	..	..	3,605	9,344	..	..

Note : Regions now use Government Office boundaries

\* Refers to stocks at end of period.

Thousands

South East	South West	England	Wales	Scotland	Great Britain	
#	#					
..	..	..	..	..	177,041	<b>(a) Commons</b>
..	..	..	..	..	47,222	Production
..	..	..	..	..	44,565	2010
..	..	..	..	..	42,484	2010 Q2
..	..	..	..	..	42,089	Q3
..	..	..	..	..	16,001	Q4
..	..	..	..	..	..	2011 Q1
..	..	..	..	..	..	2011 May
..	..	..	..	..	170,293	Deliveries (from)
..	..	..	..	..	51,409	2010
..	..	..	..	..	43,642	2010 Q2
..	..	..	..	..	34,817	Q3
..	..	..	..	..	41,615	Q4
..	..	..	..	..	17,260	2011 Q1
..	..	..	..	..	..	2011 May
..	..	..	2,297	..	138,419	Stocks *
..	1,756	..	..	..	128,631	2010
..	1,735	..	2,058	..	130,764	2010 Q2
..	..	..	2,297	..	138,419	Q3
..	1,831	..	..	..	94,590	Q4
..	1,522	..	..	..	92,032	2011 Q1
..	..	..	..	..	..	2011 May
..	..	..	..	..	1,046,108	<b>(b) Facings</b>
59,598	..	..	..	..	295,932	Production
52,650	..	..	..	..	277,870	2010
43,157	..	..	..	..	255,373	2010 Q2
..	..	..	..	..	278,124	Q3
20,659	..	..	..	1,594	117,467	Q4
..	..	..	..	..	..	2011 Q1
..	..	..	..	..	..	2011 May
221,673	..	..	..	..	1,181,101	Deliveries (from)
63,645	..	..	..	..	343,478	2010
64,262	..	..	..	..	326,116	2010 Q2
44,572	..	..	..	..	241,014	Q3
55,722	..	..	..	..	305,301	Q4
21,758	5,129	..	..	1,739	121,873	2011 Q1
..	..	..	..	..	..	2011 May
..	21,802	..	..	4,818	593,575	Stocks *
89,258	22,388	..	..	3,352	631,541	2010
..	20,300	..	..	3,564	579,444	2010 Q2
..	21,802	..	..	4,818	593,575	Q3
..	19,569	..	..	7,552	542,042	Q4
..	..	..	..	7,398	547,079	2011 Q1
..	..	..	..	..	..	2011 May
..	..	..	..	..	126,458	<b>(c) Engineering #</b>
..	..	..	..	..	33,238	Production
..	..	..	0	..	32,265	2010
..	..	..	..	..	37,003	2010 Q2
..	..	..	..	..	36,585	Q3
..	..	..	0	..	12,444	Q4
..	..	..	..	..	..	2011 Q1
..	..	..	..	..	..	2011 May
..	..	..	..	..	132,883	Deliveries (from)
..	..	..	..	..	37,620	2010
..	..	..	..	..	36,644	2010 Q2
..	..	..	..	..	32,250	Q3
..	..	..	..	..	38,134	Q4
..	..	..	0	..	15,306	2011 Q1
..	..	..	..	..	..	2011 May
..	..	..	..	..	45,681	Stocks *
..	..	..	..	..	45,359	2010
..	..	..	..	..	40,980	2010 Q2
..	..	..	..	..	45,681	Q3
..	..	..	..	..	36,905	Q4
..	..	..	..	..	35,639	2011 Q1
..	..	..	..	..	..	2011 May

Note: As of February 2011 we have improved our sampling panel to include some new sites, this has created a slight discontinuity in the data. If the data becomes available we will construct a revised back series.

Table 10 (cont'd) : Brick Production, Deliveries and Stocks by English region, Wales and Scotland

	North East	Yorks & Humber	North West	West Midlands	East Midlands	East of England
<b>(d) All Bricks</b>						
Production						
2009	..	..	..	..	..	..
2010	..	..	..	..	284,879	..
2010 Q1	..	..	..	..	58,862	..
Q2	..	..	..	..	72,599	..
Q3	..	..	..	..	76,276	..
Q4	..	..	..	..	77,142	..
2011 Q1	..	..	..	..	..	..
2010 May	..	..	..	38,411	26,008	..
June	..	..	..	..	22,828	..
July	..	..	..	..	24,195	..
August	..	..	..	..	24,313	..
September	..	..	..	..	27,768	..
October	..	..	..	42,149	34,206	..
November	..	7,982	..	..	27,247	..
December	..	..	5,772	19,154	15,689	..
2011 January	..	..	..	20,442	22,457	..
February	..	..	8,126	31,058	..	..
March	..	..	..	..	38,393	..
April	..	..	..	35,901	..	..
May	..	..	..	39,761	..	..
Deliveries (from)						
2009	..	..	..	..	..	..
2010	..	..	..	..	..	..
2010 Q1	..	..	..	93,972	..	..
Q2	..	..	..	..	..	..
Q3	..	..	..	..	..	..
Q4	..	..	..	..	..	..
2011 Q1	..	..	..	..	..	..
2010 May	..	..	..	39,258	..	..
June	..	..	..	42,626	..	..
July	..	..	..	38,446	..	..
August	..	..	..	36,852	..	..
September	..	..	..	..	..	..
October	..	..	..	38,303	..	..
November	..	7,899	..	34,493	..	..
December	..	2,150	3,843	..	..	..
2011 January	..	..	..	25,323	..	..
February	..	..	..	33,700	..	..
March	..	..	11,079	..	..	..
April	..	..	8,864	33,132	..	..
May	..	..	11,050	39,708	..	..
Stocks *						
2009	..	..	..	161,762	..	..
2010	..	..	69,161	126,855	..	..
2010 Q1	..	..	..	143,038	..	..
Q2	..	..	..	129,421	..	..
Q3	..	..	71,689	118,123	..	..
Q4	..	..	69,161	126,855	..	..
2011 Q1	..	..	49,161	108,102	..	..
2010 May	..	..	..	141,003	..	..
June	..	..	..	129,421	..	..
July	..	..	..	124,971	..	..
August	..	..	..	119,973	..	..
September	..	..	71,689	118,123	..	..
October	..	..	..	121,917	..	..
November	..	..	..	122,789	..	..
December	..	..	69,161	126,855	..	..
2011 January	..	..	..	126,410	..	..
February	..	..	..	115,052	..	..
March	..	..	49,161	108,102	..	..
April	..	..	50,278	110,871	..	..
May	..	..	48,947	110,924	..	..

Note : Regions now use Government Office boundaries

\* Refers to stocks at end of period.

South East	South West	England	Wales	Scotland	Great Britain	
						<b>(d) All Bricks</b>
						Production
..	..	..	..	..	1,216,471	2009
..	..	..	..	..	1,349,607	2010
..	..	..	..	..	283,655	2010 Q1
..	..	..	..	..	376,392	Q2
..	..	..	..	..	354,700	Q3
..	..	..	..	..	334,860	Q4
..	..	..	..	..	356,798	2011 Q1
..	..	..	..	..	136,022	2010 May
..	..	..	..	..	113,953	June
..	..	..	..	..	119,600	July
..	..	..	..	..	106,618	August
..	..	..	..	..	128,482	September
..	..	..	..	..	144,482	October
..	..	..	..	..	118,470	November
..	..	..	..	..	71,908	December
..	..	..	..	..	83,473	2011 January
..	..	..	..	..	125,822	February
..	..	..	..	..	147,503	March
..	..	..	..	..	138,961	April
..	..	..	..	..	145,912	May
						Deliveries (from)
..	..	..	..	..	1,388,003	2009
..	..	..	..	..	1,484,277	2010
..	..	..	..	..	337,287	2010 Q1
..	..	..	..	..	432,507	Q2
..	..	..	..	..	406,402	Q3
..	..	..	..	..	308,081	Q4
..	..	..	..	..	385,050	2011 Q1
..	..	..	..	..	152,089	2010 May
..	..	..	..	..	139,725	June
..	..	..	..	..	144,261	July
..	..	..	..	..	128,711	August
..	..	..	..	..	133,430	September
..	..	..	..	..	142,549	October
..	..	..	..	..	117,311	November
..	..	..	..	..	48,221	December
..	..	..	..	..	94,927	2011 January
..	..	..	..	..	129,769	February
..	..	..	..	..	160,354	March
..	..	..	..	..	131,689	April
..	..	..	..	..	154,439	May
						Stocks *
..	..	..	..	..	921,354	2009
..	..	..	..	..	777,675	2010
..	..	..	..	..	864,579	2010 Q1
..	..	..	..	..	805,531	Q2
..	..	..	..	..	751,188	Q3
..	..	..	..	..	777,675	Q4
..	..	..	..	..	673,537	2011 Q1
..	..	..	..	..	831,323	2010 May
..	..	..	..	..	805,531	June
..	..	..	..	..	780,870	July
..	..	..	..	..	754,926	August
..	..	..	..	..	751,188	September
..	..	..	..	..	753,069	October
..	..	..	..	..	754,000	November
..	..	..	..	..	777,675	December
..	..	..	..	..	770,636	2011 January
..	..	..	..	..	686,740	February
..	..	..	..	..	673,537	March
..	..	..	..	..	680,681	April
..	..	..	..	..	674,750	May

Note: As of February 2011 we have improved our sampling panel to include some new sites, this has created a slight discontinuity in the data. If the data becomes available we will construct a revised back series.

# CONCRETE PRODUCTS

## Table 11 : Concrete Blocks - Production, Deliveries and Stocks

Great Britain

	All Types			Dense		
	Production	Deliveries (from)	Stocks*	Production	Deliveries (from)	Stocks*
2000	90,219	88,529	9,594	37,629	37,013	4,368
2001	87,922	88,509	8,842	36,598	36,518	4,258
2002	91,474	91,342	9,014	35,744	36,019	3,963
2003	95,675	96,383	8,513	36,775	37,175	3,684
2004	96,256	94,854	10,088	37,677	37,444	3,690
2005	89,997	89,551	9,680	36,188	36,473	3,465
2006	87,510	87,015	..	34,956	34,741	..
2007	89,951	88,746	..	36,686	35,396	..
2008	67,743	67,136	8,920	29,675	29,889	3,498
2009	50,394	50,639	8,320	22,607	22,748	3,291
2010	53,629	51,758	10,152	22,393	21,731	3,833
2006 Q1	21,155	20,820	..	8,536	8,160	..
Q2	22,435	22,560	..	8,903	8,903	..
Q3	22,615	23,611	..	9,384	9,599	..
Q4	21,305	20,023	..	8,133	8,079	..
2007 Q1	22,014	21,057	..	8,714	8,141	..
Q2	22,532	24,033	..	9,268	9,531	..
Q3	23,248	23,184	..	9,727	9,283	..
Q4	22,157	20,472	..	8,978	8,442	..
2008 Q1	21,131	18,855	11,749	8,564	7,853	5,075
Q2	20,231	19,714	11,977	8,767	8,677	5,107
Q3	14,894	16,309	10,224	7,131	7,576	4,479
Q4	11,487	12,259	8,920	5,214	5,783	3,498
2009 Q1	12,094	11,649	9,161	5,635	5,438	3,628
Q2	13,463	13,191	9,455	6,192	6,032	3,821
Q3	12,771	13,924	8,203	5,811	6,255	3,390
Q4	12,066	11,874	8,320	4,969	5,023	3,291
2010 Q1	12,614	12,072	8,740	5,033	4,896	3,333
Q2	14,956	14,753	8,990	6,343	6,176	3,513
Q3	15,172	14,343	9,832	6,477	6,125	3,837
Q4	10,887	10,590	10,152	4,541	4,534	3,833
2011 Q1	13,982	12,795	11,516	5,642	5,278	4,197
2009 June	4,725	4,600	9,455	2,203	2,119	3,821
July	4,740	4,863	..	2,111	2,172	..
August	3,417	4,264	..	1,642	1,933	..
September	4,614	4,797	8,203	2,058	2,151	3,390
October	4,740	4,818	..	1,930	2,006	..
November	4,372	4,072	..	1,782	1,720	..
December	2,954	2,984	8,320	1,258	1,297	3,291
2010 January	3,342	3,003	..	1,225	1,186	..
February	4,341	4,100	..	1,744	1,672	..
March	4,931	4,969	8,740	2,063	2,039	3,333
April	4,814	4,948	..	1,975	1,970	..
May	4,790	4,765	..	1,974	1,969	..
June	5,353	5,040	8,990	2,394	2,237	3,513
July	5,266	4,970	..	2,248	2,169	..
August	4,711	4,614	..	2,158	1,962	..
September	5,195	4,759	9,832	2,070	1,993	3,837
October	4,295	4,372	..	1,739	1,824	..
November	3,999	4,092	..	1,595	1,710	..
December	2,593	2,126	10,152	1,207	1,001	3,833
2011 January	3,924	3,591	..	1,657	1,539	..
February	4,664	4,220	..	1,853	1,694	..
March	5,394	4,984	11,516	2,133	2,045	4,197
April (P)	4,356	4,289	..	1,818	1,816	..
May (P)	4,969	4,670	..	2,065	2,026	..
June (P)	5,238	4,892	..	2,173	2,047	..

\* Refers to stocks at end of period



# CONCRETE PRODUCTS

Thousand square metres

Lightweight			Aerated			
Production	Deliveries (from)	Stocks*	Production	Deliveries (from)	Stocks*	
22,991	22,638	2,169	29,599	28,878	3,058	2000
22,684	22,670	2,207	28,639	29,320	2,377	2001
23,478	23,537	2,188	32,252	31,786	2,863	2002
24,991	25,161	2,107	33,909	34,047	2,721	2003
25,462	25,736	2,271	33,117	31,674	4,127	2004
25,561	25,673	2,173	28,248	27,405	4,042	2005
25,345	25,222	..	27,209	27,051	..	2006
25,965	25,667	..	27,300	27,682	..	2007
18,168	18,363	2,149	19,900	18,884	3,273	2008
13,421	13,989	1,522	14,367	13,903	3,507	2009
14,415	13,923	2,044	16,822	16,104	4,276	2010
6,262	6,179	..	6,357	6,481	..	2006 Q1
6,125	6,342	..	7,406	7,315	..	Q2
6,699	6,781	..	6,532	7,231	..	Q3
6,258	5,920	..	6,914	6,024	..	Q4
6,418	6,437	..	6,883	6,479	..	2007 Q1
6,572	6,867	..	6,692	7,636	..	Q2
6,757	6,616	..	6,764	7,286	..	Q3
6,217	5,748	..	6,962	6,282	..	Q4
5,580	5,389	2,633	6,988	5,612	4,041	2008 Q1
5,421	5,405	2,549	6,043	5,632	4,321	Q2
4,110	4,309	2,338	3,653	4,424	3,406	Q3
3,057	3,260	2,149	3,216	3,216	3,273	Q4
3,213	3,258	2,181	3,247	2,953	3,352	2009 Q1
3,498	3,553	2,125	3,773	3,607	3,510	Q2
3,293	3,765	1,544	3,667	3,903	3,269	Q3
3,416	3,412	1,522	3,681	3,439	3,507	Q4
3,344	3,252	1,601	4,238	3,924	3,806	2010 Q1
4,031	3,950	1,692	4,582	4,627	3,785	Q2
4,208	3,899	2,023	4,487	4,319	3,971	Q3
2,832	2,822	2,044	3,515	3,234	4,276	Q4
3,916	3,665	2,301	4,423	3,852	5,017	2011 Q1
1,221	1,231	2,125	1,301	1,250	3,510	2009 June
1,171	1,275	..	1,458	1,416	..	July
895	1,152	..	881	1,180	..	August
1,227	1,339	1,544	1,328	1,308	3,269	September
1,379	1,411	..	1,431	1,401	..	October
1,300	1,173	..	1,290	1,178	..	November
737	828	1,522	959	859	3,507	December
712	760	..	1,406	1,057	..	2010 January
1,302	1,134	..	1,294	1,294	..	February
1,330	1,357	1,601	1,538	1,573	3,806	March
1,298	1,288	..	1,541	1,689	..	April
1,305	1,264	..	1,511	1,532	..	May
1,428	1,398	1,692	1,530	1,405	3,785	June
1,474	1,354	..	1,543	1,447	..	July
1,286	1,289	..	1,267	1,363	..	August
1,447	1,256	2,023	1,677	1,510	3,971	September
1,211	1,201	..	1,345	1,347	..	October
1,068	1,122	..	1,336	1,260	..	November
553	498	2,044	834	627	4,276	December
939	1,021	..	1,328	1,031	..	2011 January
1,346	1,196	..	1,466	1,330	..	February
1,632	1,448	2,301	1,629	1,491	5,017	March
1,177	1,177	..	1,361	1,296	..	April (P)
1,387	1,289	..	1,517	1,355	..	May (P)
1,406	1,284	..	1,658	1,561	..	June (P)

# CONCRETE PRODUCTS

**Table 12 : Concrete Blocks : Production, Deliveries and Stocks by English Region, Wales and Scotland**

	North East	Yorks & Humber	North West	West Midlands	East Midlands	East of England
<b>(a) Dense aggregate</b>						
Production						
2010	418	..	2,778	..	..	..
2010 Q1	68	..	657	..	..	..
Q2	114	..	742	..	..	..
Q3	155	..	826	..	..	..
Q4	81	..	553	..	..	..
2011 Q1	111	..	701	..	..	..
Deliveries (from)						
2010	397	..	2,799	..	..	..
2010 Q1	72	..	633	..	..	..
Q2	117	..	761	..	..	..
Q3	135	..	831	..	..	..
Q4	73	..	575	..	..	..
2011 Q1	105	..	665	..	..	..
Stocks *						
2010	85	332	265	..	..	..
2010 Q1	60	399	320	..	..	..
Q2	57	363	300	..	..	..
Q3	76	372	287	..	..	..
Q4	85	332	265	..	..	..
2011 Q1	91	382	301	..	..	..
<b>(b) Other (1)</b>						
Production						
2010	1,188	..	2,016	..	..	..
2010 Q1	259	..	414	..	..	..
Q2	372	..	579	..	..	..
Q3	333	..	591	..	..	..
Q4	225	..	432	..	..	..
2011 Q1	353	..	533	..	..	..
Deliveries (from)						
2010	1,202	..	2,060	..	..	..
2010 Q1	255	..	448	..	..	..
Q2	356	..	591	..	..	..
Q3	363	..	596	..	..	..
Q4	227	..	426	..	..	..
2011 Q1	327	..	532	..	..	..
Stocks *						
2010	120	1,099	164	..	..	..
2010 Q1	137	1,042	154	..	..	..
Q2	153	954	144	..	..	..
Q3	123	1,128	158	..	..	..
Q4	120	1,099	164	..	..	..
2011 Q1	148	1,264	165	..	..	..
<b>(c) Total</b>						
Production						
2010	1,607	10,353	4,794	3,534	6,301	6,048
2010 Q1	327	2,451	1,071	852	1,637	1,531
Q2	486	2,880	1,321	940	1,720	1,721
Q3	487	3,055	1,417	1,014	1,734	1,646
Q4	306	1,968	985	728	1,210	1,150
2011 Q1	463	2,637	1,234	1,024	1,598	1,646
Deliveries (from)						
2010	1,598	10,166	4,860	3,736	5,974	6,144
2010 Q1	327	2,253	1,081	806	1,468	1,538
Q2	473	3,003	1,352	1,119	1,690	1,746
Q3	499	2,873	1,426	1,064	1,631	1,644
Q4	300	2,037	1,001	747	1,186	1,216
2011 Q1	432	2,568	1,197	916	1,489	1,521
Stocks *						
2010	205	1,431	430	677	1,092	582
2010 Q1	197	1,441	474	925	934	604
Q2	210	1,317	444	746	964	602
Q3	199	1,499	445	696	1,068	623
Q4	205	1,431	430	677	1,092	582
2011 Q1	239	1,646	466	785	1,201	730

Note : Regions refer to Government Office Regions

\* Refers to stocks at end of period.

# CONCRETE PRODUCTS

Thousand square metres

South East	South West	England	Wales	Scotland	Great Britain	
						<b>(a) Dense aggregate</b>
						Production
..	5,813	..	2,918	..	22,387	2010
408	1,213	..	621	..	5,027	2010 Q1
..	1,681	..	805	..	6,342	Q2
409	1,699	..	783	..	6,477	Q3
..	1,221	..	709	..	4,541	Q4
..	1,574	..	750	..	5,642	2011 Q1
						Deliveries (from)
..	5,548	..	2,667	..	21,731	2010
375	1,214	3,870	642	384	4,896	2010 Q1
..	1,564	4,886	745	545	6,176	Q2
406	1,556	4,924	711	489	6,125	Q3
..	1,215	..	568	..	4,534	Q4
..	1,415	..	681	..	5,278	2011 Q1
						Stocks *
..	1,100	..	..	211	3,833	2010
209	860	2,587	502	244	3,333	2010 Q1
..	982	2,646	557	310	3,513	Q2
..	1,105	2,887	629	321	3,837	Q3
..	1,100	..	..	211	3,833	Q4
..	1,260	..	..	233	4,197	2011 Q1
						<b>(b) Other (1)</b>
						Production
..	992	..	567	..	31,242	2010
1,858	217	..	64	..	7,587	2010 Q1
..	279	..	148	..	8,613	Q2
1,940	299	..	177	..	8,695	Q3
..	197	..	178	..	6,347	Q4
..	327	..	161	..	8,339	2011 Q1
						Deliveries (from)
..	994	..	374	..	30,028	2010
1,671	229	7,092	67	17	7,176	2010 Q1
..	285	8,450	103	24	8,577	Q2
1,633	276	8,083	117	20	8,219	Q3
..	204	..	87	..	6,056	Q4
..	295	..	89	..	7,517	2011 Q1
						Stocks *
..	138	..	..	33	6,320	2010
2,150	105	5,312	53	42	5,407	2010 Q1
..	109	5,338	98	42	5,477	Q2
..	134	5,801	158	35	5,994	Q3
..	138	..	..	33	6,320	Q4
..	175	..	..	26	7,318	2011 Q1
						<b>(c) Total</b>
						Production
8,959	6,805	48,402	3,485	1,742	53,629	2010
2,266	1,430	11,565	685	364	12,614	2010 Q1
2,353	1,960	13,381	953	622	14,956	Q2
2,349	1,998	13,699	960	512	15,172	Q3
1,991	1,418	9,756	887	244	10,887	Q4
2,219	1,902	12,724	911	347	13,982	2011 Q1
						Deliveries (from)
7,864	6,543	46,884	3,040	1,834	51,759	2010
2,046	1,443	10,962	709	401	12,072	2010 Q1
2,104	1,849	13,336	848	569	14,754	Q2
2,039	1,832	13,007	828	509	14,343	Q3
1,675	1,419	9,579	656	355	10,590	Q4
1,860	1,710	11,693	770	332	12,795	2011 Q1
						Stocks *
3,235	1,238	8,890	1,019	244	10,152	2010
2,359	965	7,899	555	286	8,740	2010 Q1
2,609	1,091	7,984	655	352	8,991	Q2
2,919	1,239	8,689	788	355	9,832	Q3
3,235	1,238	8,890	1,019	244	10,152	Q4
3,594	1,434	10,097	1,160	259	11,516	2011 Q1

(1) Lightweight aggregate including aerated concrete blocks where appropriate.

# OTHER BUILDING MATERIALS

**Table 13 : Other Building Materials**

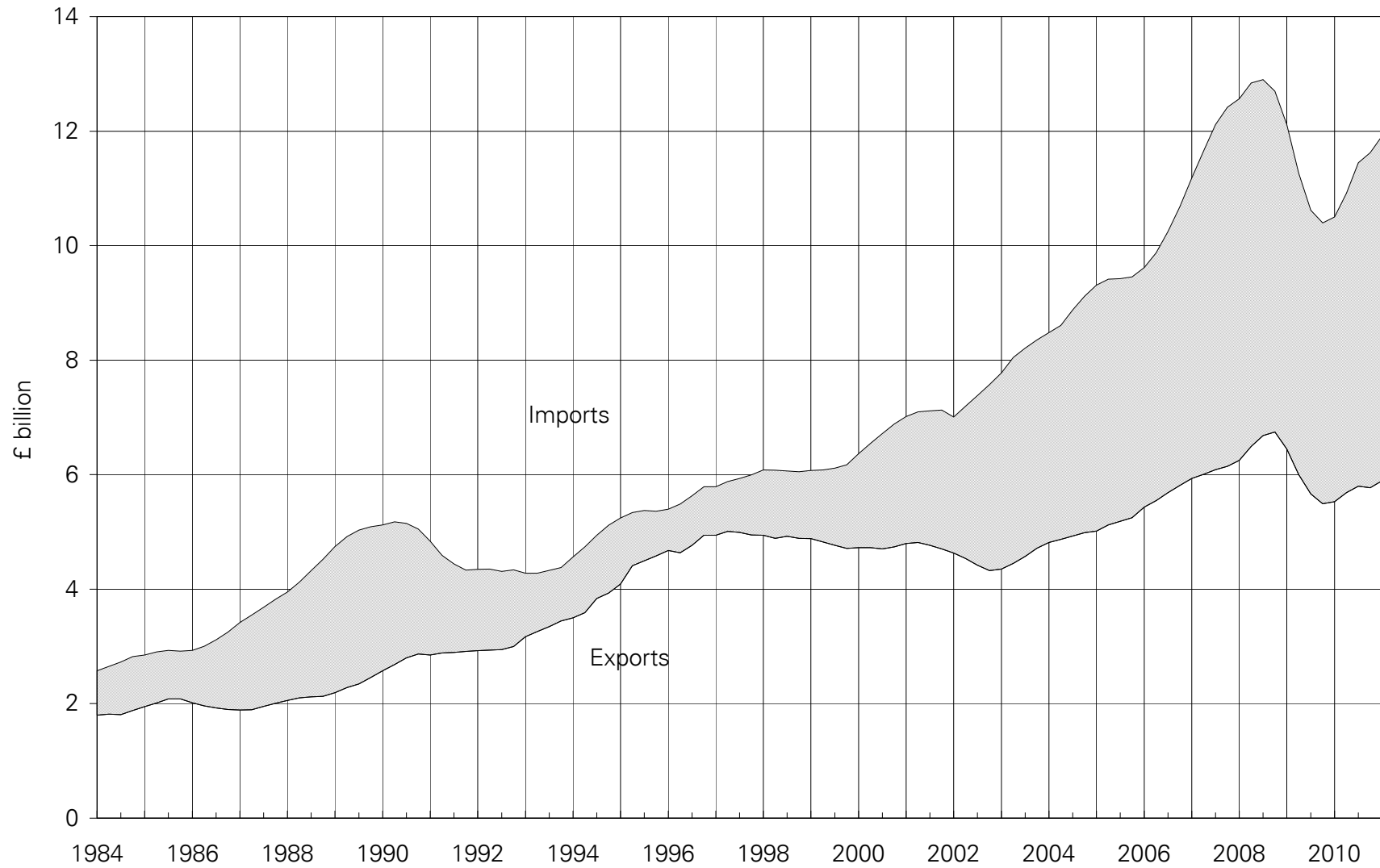
	Great Britain			United Kingdom
	<b>Concrete Roofing Tiles</b> (Th.sq.m. of roof area covered)			<b>Ready-Mixed Concrete #</b> (Th.cu.m.)
	Production	Deliveries	Stocks *	Deliveries
2000	26,765	25,047	4,552	23,043
2001	24,825	24,430	4,947	23,008
2002	25,023	24,390	4,586	22,597
2003	21,437	21,401	2,982	22,289
2004	20,739	19,403	2,850	22,856
2005	25,719	24,489	4,902	22,432
2006	23,730	24,118	4,426	23,029
2007	23,551	23,812	3,646	23,548
2008	20,084	19,926	3,899	20,051
2009	14,079	15,612	2,344	14,069
2010	17,817	17,146	3,023	14,038
2002 Q2	6,097	6,474	4,954	5,934
Q3	5,918	6,848	3,654	5,929
Q4	6,251	5,267	4,586	5,330
2003 Q1	5,821	5,798	4,484	5,388
Q2	6,280	6,364	4,480	5,892
Q3	3,917	4,455	2,362	5,750
Q4	5,418	4,785	2,982	5,259
2004 Q1	5,498	4,294	3,787	5,334
Q2	5,266	4,800	3,728	5,931
Q3	4,920	5,134	3,048	6,038
Q4	5,055	5,175	2,850	5,553
2005 Q1	5,787	4,779	3,732	5,137
Q2	7,502	6,406	5,818	5,994
Q3	6,135	7,103	4,850	5,920
Q4	6,295	6,200	4,902	5,381
2006 Q1	6,792	6,252	5,418	5,445
Q2	6,002	5,709	5,708	5,995
Q3	5,448	6,371	4,688	6,047
Q4	5,489	5,787	4,426	5,542
2007 Q1	6,618	5,629	5,368	5,554
Q2	5,775	5,728	5,360	6,103
Q3	5,129	6,541	3,929	6,205
Q4	6,028	5,914	3,646	5,686
2008 Q1	5,708	5,421	3,922	5,193
Q2	5,815	5,679	4,488	5,773
Q3	4,657	4,977	3,840	4,902
Q4	3,903	3,849	3,899	4,183
2009 Q1	3,664	3,281	4,273	3,583
Q2	3,055	3,936	3,391	3,637
Q3	3,580	4,447	2,522	3,628
Q4	3,779	3,949	2,344	3,221
2010 Q1	4,129	3,505	2,967	3,328
Q2	4,961	4,922	3,008	3,819
Q3	4,783	4,824	2,967	3,831
Q4	3,945	3,894	3,023	3,060
2011 Q1	4,820	4,079	3,858	3,827
Q2	4,565	4,398	4,022	3,907

\* Refers to stocks at the end of the period.

# The Mineral Products Association (who provide these figures), estimate that these figures understate UK deliveries by 14-18%

# Comparison of Imports & Exports

4-quarter moving totals



The data is taken from Table 14

## EXTERNAL TRADE

**Table 14 : Value of Overseas Trade in Selected Materials and Components for Constructional Use : Imports (cif) & Exports (fob)**

United Kingdom		Current Prices (£'000)					
		2005	2006	2007	2008	2009	2010
<b>All Building Materials &amp; Components</b>	Imports	9,453,474	10,680,836	12,415,890	12,697,046	10,399,489	11,624,923
	Exports	5,246,749	5,813,301	6,147,721	6,747,415	5,491,055	5,769,236
	Balance	(4,206,725)	(4,867,535)	(6,268,169)	(5,949,631)	(4,908,434)	(5,855,687)
<b>All Raw Materials</b>	Imports	149,138	180,137	213,589	228,019	158,706	174,274
	Exports	91,178	98,057	124,957	116,930	135,125	132,347
	Balance	(57,960)	(82,080)	(88,632)	(111,089)	(23,581)	(41,927)
Sand for construction	Imports	4,363	5,075	6,455	6,369	5,916	5,259
	Exports	5,498	5,770	7,769	9,373	7,967	7,398
Crushed Rock : uncoated	Imports	28,580	39,308	38,882	43,442	32,030	36,490
	Exports	60,850	65,985	71,990	77,930	76,898	73,900
Crushed Rock : coated	Imports	1,172	2,245	2,927	3,206	2,227	2,642
	Exports	4,787	2,621	3,937	3,862	3,061	2,988
Building Stone : unprocessed	Imports	92,059	95,903	115,064	124,436	93,174	99,235
	Exports	1,597	1,777	3,209	2,159	2,114	4,053
Slate : unprocessed	Imports	7,428	10,894	11,590	9,295	6,168	5,799
	Exports	703	309	1,579	813	1,924	844
Gypsum & Anhydrite	Imports	9,509	8,649	8,626	8,301	8,353	7,040
	Exports	547	511	493	899	768	1,148
Bituminous Shale	Imports	6,027	18,063	30,045	32,970	10,838	17,809
	Exports	17,196	21,084	35,980	21,894	42,393	42,016
<b>All Semi-Manufactures</b>	Imports	1,619,893	1,756,076	2,196,078	1,972,139	1,389,572	1,644,228
	Exports	575,831	618,573	644,415	648,822	426,190	480,345
	Balance	(1,044,062)	(1,137,503)	(1,551,663)	(1,323,317)	(963,382)	(1,163,883)
Clinker	Imports	26,338	40,922	60,554	35,973	18,520	17,331
	Exports	1,801	2,644	1,899	1,271	835	1,205
Sawn Wood > 6mm thick	Imports	691,359	727,916	915,900	610,292	554,187	706,035
	Exports	30,939	38,370	32,010	20,957	16,025	19,396
Densified Wood	Imports	2,603	2,782	2,332	1,767	1,452	2,301
	Exports	475	422	319	272	268	518
Particle Board	Imports	58,319	56,174	55,934	45,497	27,913	30,727
	Exports	11,058	16,357	9,377	8,920	8,382	8,871
Laminated Wood	Imports	232,912	250,615	282,912	296,969	215,021	146,664
	Exports	22,721	24,436	23,172	21,935	15,839	11,690
Fibreboard	Imports	58,050	61,429	72,499	61,614	56,511	53,742
	Exports	10,398	12,532	10,575	8,966	15,055	24,726
Steel for Fabrication	Imports	248,987	278,232	463,477	529,327	184,164	286,865
	Exports	270,581	236,427	257,126	301,366	185,537	216,815
Aluminium for Fabrication	Imports	211,703	272,983	277,251	315,948	268,155	329,615
	Exports	152,508	220,651	234,348	216,596	123,494	131,553
Profiles of Vinyl Chloride	Imports	48,666	48,747	41,560	44,169	44,827	35,901
	Exports	24,012	27,349	33,766	25,781	23,770	23,337
Slag for Construction	Imports	4,790	4,626	8,607	11,580	2,331	5,825
	Exports	2,788	1,747	1,231	1,018	921	1,071
Tar & Bituminous Mixtures	Imports	34,134	9,261	12,285	17,424	15,156	27,742
	Exports	37,635	26,008	27,895	27,680	22,781	27,479
Lime	Imports	2,032	2,389	2,767	1,579	1,335	1,480
	Exports	10,915	11,630	12,697	14,060	13,283	13,684

Current Prices (£'000)

2010 Q1	Q2	Q3	Q4	2011 Q1		
2,647,411	3,001,952	3,140,599	2,834,961	2,939,501	Imports	<b>All Building Materials &amp; Components</b>
1,345,537	1,514,023	1,502,808	1,406,868	1,471,614	Exports	
(1,301,874)	(1,487,929)	(1,637,791)	(1,428,093)	(1,467,887)	Balance	
39,726	48,298	45,939	40,311	35,664	Imports	<b>All Raw Materials</b>
19,925	38,580	39,127	34,715	20,210	Exports	
(19,801)	(9,718)	(6,812)	(5,596)	(15,454)	Balance	
949	1,413	1,609	1,288	1,534	Imports	Sand for construction
1,403	2,310	1,799	1,886	1,676	Exports	
8,531	10,044	8,449	9,466	9,122	Imports	Crushed Rock : uncoated
13,977	22,920	18,305	18,698	14,598	Exports	
489	610	771	772	587	Imports	Crushed Rock : coated
910	1,010	736	332	483	Exports	
21,892	28,227	26,517	22,599	21,191	Imports	Building Stone : unprocessed
639	1,283	1,163	968	911	Exports	
2,160	1,160	1,256	1,223	808	Imports	Slate : unprocessed
91	186	285	282	221	Exports	
1,604	1,745	2,059	1,632	2,196	Imports	Gypsum & Anhydrite
265	196	362	325	293	Exports	
4,101	5,099	5,278	3,331	226	Imports	Bituminous Shale
2,640	10,675	16,477	12,224	2,028	Exports	
343,103	465,448	442,887	392,790	390,857	Imports	<b>All Semi-Manufactures</b>
109,184	132,886	127,112	111,163	129,855	Exports	
(233,919)	(332,562)	(315,775)	(281,627)	(261,002)	Balance	
3,961	4,019	4,783	4,568	4,324	Imports	Clinker
65	291	241	608	360	Exports	
148,740	197,750	201,504	158,041	144,440	Imports	Sawn Wood > 6mm thick
3,961	6,859	4,647	3,929	3,541	Exports	
545	633	664	459	517	Imports	Densified Wood
102	117	149	150	150	Exports	
7,378	8,239	8,281	6,829	7,055	Imports	Particle Board
3,125	1,991	1,836	1,919	1,978	Exports	
33,392	41,322	41,820	30,130	36,280	Imports	Laminated Wood
3,137	2,729	3,649	2,175	2,661	Exports	
12,361	15,073	14,058	12,250	14,035	Imports	Fibreboard
5,911	5,169	6,805	6,841	3,051	Exports	
41,048	88,917	70,464	86,436	86,193	Imports	Steel for Fabrication
48,724	62,022	57,404	48,665	62,185	Exports	
79,463	86,009	83,903	80,240	88,106	Imports	Aluminium for Fabrication
30,925	34,282	34,314	32,032	41,564	Exports	
8,272	10,220	9,416	7,993	6,065	Imports	Profiles of Vinyl Chloride
5,627	6,289	6,105	5,316	5,031	Exports	
293	3,732	862	938	323	Imports	Slag for Construction
232	314	294	231	243	Exports	
7,344	8,917	6,831	4,650	3,159	Imports	Tar & Bituminous Mixtures
4,187	8,919	8,227	6,146	4,948	Exports	
306	617	301	256	360	Imports	Lime
3,188	3,904	3,441	3,151	4,143	Exports	

## EXTERNAL TRADE

**Table 14 : Value of Overseas Trade in Selected Materials and Components for Constructional Use : Imports (cif) & Exports (fob)**

United Kingdom		Current Prices (£'000)					
		2005	2006	2007	2008	2009	2010
<b>All Products &amp; Components</b>	Imports	7,684,443	8,744,623	10,006,223	10,496,888	8,851,211	9,806,421
	Exports	4,579,740	5,096,671	5,378,349	5,981,663	4,929,740	5,156,544
	Balance	(3,104,703)	(3,647,952)	(4,627,874)	(4,515,225)	(3,921,471)	(4,649,877)
Wood sleepers (rail & tram)	Imports	7,296	6,844	7,907	10,736	5,761	5,065
	Exports	905	605	905	1,074	688	717
Building Stone : processed	Imports	173,780	206,066	243,019	252,176	211,999	217,570
	Exports	39,290	36,148	34,465	38,557	37,466	30,751
Slate Roofing Tiles*	Imports	53,197	50,718	58,165	65,872	57,067	62,875
	Exports	11,093	5,479	6,941	6,559	8,552	6,286
Other Slate Products*	Imports	10,235	10,641	8,963	8,204	8,002	8,381
	Exports	2,569	2,406	2,348	1,643	1,141	1,725
Slate Products*	Imports	..	..	..	..	..	..
	Exports	..	..	..	..	..	..
Portland Cement	Imports	56,472	52,408	59,422	65,930	54,475	52,246
	Exports	21,706	28,179	26,525	13,271	4,897	4,178
Other Cements	Imports	22,408	24,858	24,705	31,452	47,618	50,669
	Exports	23,786	32,357	31,336	29,824	24,202	35,372
Steel Sheet Piling	Imports	47,933	55,911	71,747	78,763	48,577	61,527
	Exports	14,808	18,609	20,205	32,009	24,175	16,226
Ready-Mixed Concrete	Imports	3	612	686	826	711	822
	Exports	9,072	10,116	10,378	12,639	4,600	3,378
Concrete Reinforcing Bars	Imports	121,965	150,492	181,795	210,556	72,138	85,515
	Exports	38,095	38,587	107,236	194,136	68,087	60,252
Mortars	Imports	4,740	5,247	6,225	7,021	7,949	7,353
	Exports	5,566	5,998	5,772	6,410	5,360	3,757
Clay Bricks	Imports	27,578	29,102	35,245	25,877	18,675	19,778
	Exports	12,082	13,540	10,591	7,133	3,703	3,162
Clay Roofing Tiles	Imports	9,485	10,285	10,348	10,104	7,576	9,116
	Exports	1,449	1,680	303	276	511	589
Clay Pipes	Imports	2,163	600	669	313	146	225
	Exports	8,445	6,262	5,518	5,775	4,177	3,472
Other Clay Products	Imports	5,240	5,885	5,602	6,668	5,453	5,225
	Exports	14,338	11,123	17,502	18,852	2,851	3,188
Concrete Blocks & Bricks	Imports	5,867	4,544	11,475	8,615	4,421	4,361
	Exports	25,598	26,813	27,318	21,102	11,844	9,203
Concrete Roofing Tiles*	Imports	2,408	4,845	4,664	7,195	7,342	5,017
	Exports	7,286	7,857	7,013	3,844	2,402	2,949
Other Concrete Tiles & Paving*	Imports	11,752	14,703	16,130	18,353	15,576	13,297
	Exports	35,168	33,692	38,280	34,756	19,151	13,594
Concrete Tiles and Pavings*	Imports	..	..	..	..	..	..
	Exports	..	..	..	..	..	..
Prefabricated Concrete Products	Imports	20,288	22,439	26,763	34,841	23,582	28,811
	Exports	29,373	28,936	23,240	19,042	8,967	12,258
Concrete Pipes	Imports	21,365	27,303	32,767	36,740	40,646	45,485
	Exports	25,566	27,010	32,536	31,413	30,366	24,375



Current Prices (£'000)

2010 Q1	Q2	Q3	Q4	2011 Q1		
2,264,582	2,488,206	2,651,773	2,401,860	2,512,980	Imports	<b>All Products &amp; Components</b>
1,216,428 (1,048,154)	1,342,557 (1,145,649)	1,336,569 (1,315,204)	1,260,990 (1,140,870)	1,321,549 (1,191,431)	Exports Balance	
1,577	1,430	1,208	850	1,614	Imports	Wood sleepers (rail & tram)
148	246	215	108	106	Exports	
51,974	57,503	56,242	51,851	46,164	Imports	Building Stone : processed
7,284	9,495	7,402	6,570	2,340	Exports	
13,156	14,476	18,631	16,612	..	Imports	Slate Roofing Tiles*
1,269	1,721	1,530	1,766	..	Exports	
2,234	2,231	2,030	1,886	..	Imports	Other Slate Products*
390	295	347	693	..	Exports	
..	..	..	..	16,363	Imports	Slate Products*
..	..	..	..	1,601	Exports	
9,988	16,970	15,891	9,397	11,379	Imports	Portland Cement
950	1,033	1,133	1,062	653	Exports	
9,002	12,528	13,702	15,437	14,030	Imports	Other Cements
8,031	9,906	9,839	7,596	9,940	Exports	
10,417	15,331	19,792	15,987	18,537	Imports	Steel Sheet Piling
6,128	4,083	2,607	3,408	4,776	Exports	
255	280	203	84	11	Imports	Ready-Mixed Concrete
677	916	922	863	644	Exports	
14,589	33,371	24,021	13,534	31,810	Imports	Concrete Reinforcing Bars
18,011	12,829	17,332	12,080	8,357	Exports	
1,768	2,311	1,904	1,370	2,154	Imports	Mortars
1,189	917	981	670	1,834	Exports	
4,777	6,146	4,928	3,927	5,419	Imports	Clay Bricks
823	932	887	520	623	Exports	
1,737	2,483	2,567	2,329	2,095	Imports	Clay Roofing Tiles
167	291	33	98	76	Exports	
54	94	65	12	82	Imports	Clay Pipes
645	930	1,021	876	917	Exports	
1,112	1,400	1,492	1,221	1,786	Imports	Other Clay Products
1,148	678	594	768	1,588	Exports	
1,007	1,244	1,146	964	1,711	Imports	Concrete Blocks & Bricks
1,897	3,020	2,775	1,511	1,844	Exports	
1,525	769	1,527	1,196	..	Imports	Concrete Roofing Tiles*
611	696	890	752	..	Exports	
3,185	3,543	3,017	3,552	..	Imports	Other Concrete Tiles & Paving*
2,561	4,519	4,320	2,194	..	Exports	
..	..	..	..	4,109	Imports	Concrete Tiles and Pavings*
..	..	..	..	2,518	Exports	
6,963	6,841	9,080	5,927	6,430	Imports	Prefabricated Concrete Products
2,911	4,031	3,188	2,128	1,990	Exports	
10,893	11,352	11,826	11,414	17,050	Imports	Concrete Pipes
7,155	6,978	6,006	4,236	5,405	Exports	

\* Due to changes to in European Commission product classifications Slate Roofing Tiles and Other Slate Products have been combined. Similarly, Concrete Roofing Tiles and Other Concrete Tiles and Pavings have been combined.

## EXTERNAL TRADE

**Table 14 : Value of Overseas Trade in Selected Materials and Components for Constructional Use : Imports (cif) & Exports (fob)**

United Kingdom		Current Prices (£'000)					
		2005	2006	2007	2008	2009	2010
<b>Products &amp; Components (continued)</b>							
Structural Units (steel)	Imports	308,125	361,685	526,140	564,645	470,772	604,002
	Exports	401,831	445,237	498,331	604,520	505,127	485,432
Structural Units (aluminium)	Imports	147,050	149,756	220,258	251,909	292,334	178,170
	Exports	72,729	81,708	81,777	98,289	71,158	54,971
Steel Tubes & Hollow Sections	Imports	94,193	117,181	142,420	157,616	108,794	131,011
	Exports	93,134	109,871	114,756	132,537	82,990	108,499
Bituminous Roofing Felt*	Imports	19,560	21,082	25,627	30,853	35,139	39,835
	Exports	5,439	5,756	5,406	3,507	3,392	2,744
Other Asphalt products*	Imports	9,488	8,449	9,966	9,999	9,987	10,750
	Exports	12,814	16,756	16,768	18,030	19,595	14,474
Asphalt Products*	Imports	..	..	..	..	..	..
	Exports	..	..	..	..	..	..
Mineral Insulating Materials	Imports	81,459	84,002	81,851	78,961	74,096	80,980
	Exports	115,427	137,321	139,360	132,697	106,865	146,430
Glass Fibre	Imports	1,240	2,667	1,482	1,185	552	381
	Exports	1,270	820	1,188	2,829	1,220	1,075
Fibre Cement Products	Imports	22,167	24,343	31,344	28,053	28,663	31,019
	Exports	7,403	6,619	6,668	7,680	4,847	5,849
Building Plasters <sup>1</sup>	Imports	6,740	5,726	6,172	6,868	8,845	..
	Exports	6,325	8,122	7,622	8,077	7,475	..
Plasters <sup>1</sup>	Imports	..	..	..	..	..	14,156
	Exports	..	..	..	..	..	7,905
Plasterboard	Imports	37,787	34,275	30,302	16,057	13,683	14,867
	Exports	16,723	24,261	19,798	18,397	16,505	12,912
Copper Pipes	Imports	152,310	212,455	217,861	245,212	182,487	241,116
	Exports	124,771	167,830	153,412	171,581	116,520	145,678
Lead Pipes & Fittings**	Imports	114	168	93	18	509	148
	Exports	1,768	204	48	626	209	243
Zinc Pipes & Fittings*	Imports	179	328	1,154	918	494	757
	Exports	3,989	5,446	7,166	6,016	4,388	914
Other Zinc Building Products*	Imports	11,993	14,481	12,447	13,117	10,409	13,001
	Exports	21,052	23,874	20,946	22,026	22,639	26,526
Zinc Building Products*	Imports	..	..	..	..	..	..
	Exports	..	..	..	..	..	..
Plastic Pipes	Imports	84,353	100,143	114,727	133,929	117,126	105,778
	Exports	170,734	187,793	205,332	211,718	202,745	149,340
Other Plastic Building Products	Imports	116,565	133,409	148,828	149,235	138,250	148,176
	Exports	99,630	100,498	115,008	117,407	96,902	109,923
Builders Ironmongery	Imports	389,610	452,336	498,373	505,665	278,144	311,827
	Exports	130,262	155,065	157,424	165,476	94,402	112,053
Nails & Screws	Imports	48,017	51,836	59,853	61,080	48,123	66,842
	Exports	14,170	15,228	12,553	12,851	8,281	8,906
Mastics, Putty	Imports	126,301	138,982	148,599	151,898	132,061	143,505
	Exports	82,530	95,347	103,998	119,256	110,080	115,347
Paints & Varnishes	Imports	297,691	315,961	339,581	356,451	345,977	376,207
	Exports	421,283	436,044	442,126	551,564	503,518	552,257

<sup>1</sup> From Q1 2010 onwards the Plasters category will contain Building Plaster and Other Plasters as Building Plasters data is no longer collected

## EXTERNAL TRADE

Current Prices (£'000)

2010 Q1	Q2	Q3	Q4	2011 Q1	Products & Components (continued)	
106,051	151,743	225,936	120,272	140,165	Imports	Structural Units (steel)
91,040	152,215	131,588	110,589	119,793	Exports	
43,936	45,092	51,436	37,706	42,460	Imports	Structural Units (aluminium)
13,598	14,053	15,414	11,906	14,642	Exports	
29,719	34,118	35,708	31,466	42,955	Imports	Steel Tubes & Hollow Sections
29,023	24,979	26,679	27,818	34,483	Exports	
9,507	9,931	10,183	10,214	..	Imports	Bituminous Roofing Felt*
575	829	709	631	..	Exports	
1,773	2,255	3,481	3,241	..	Imports	Other Asphalt products*
4,314	3,456	3,906	2,798	..	Exports	
..	..	..	..	11,983	Imports	Asphalt Products*
..	..	..	..	3,520	Exports	
19,350	20,967	21,752	18,911	19,743	Imports	Mineral Insulating Materials
32,947	37,791	39,416	36,276	38,259	Exports	
89	102	132	58	108	Imports	Glass Fibre
147	383	249	296	521	Exports	
7,022	7,845	8,692	7,460	7,773	Imports	Fibre Cement Products
1,038	1,102	2,170	1,539	1,307	Exports	
..	..	..	..	..	Imports	Building Plasters1
..	..	..	..	..	Exports	
3,787	3,150	3,856	3,363	2,409	Imports	Plasters1
2,331	1,851	1,940	1,783	2,276	Exports	
3,663	4,007	3,360	3,837	4,288	Imports	Plasterboard
3,528	3,720	2,986	2,678	3,778	Exports	
62,906	63,461	58,445	56,304	24,373	Imports	Copper Pipes
33,583	37,039	35,747	39,309	19,726	Exports	
146	0	0	2	..	Imports	Lead Pipes & Fittings**
1	116	96	30	..	Exports	
137	202	185	233	..	Imports	Zinc Pipes & Fittings*
567	152	84	111	..	Exports	
2,741	3,877	3,350	3,033	..	Imports	Other Zinc Building Products*
6,436	7,013	6,332	6,745	..	Exports	
..	..	..	..	3,290	Imports	Zinc Building Products*
..	..	..	..	6,804	Exports	
25,491	29,323	26,703	24,261	29,352	Imports	Plastic Pipes
32,802	42,871	41,084	32,583	38,263	Exports	
35,920	38,216	40,603	33,437	36,126	Imports	Other Plastic Building Products
24,401	27,935	30,695	26,892	28,148	Exports	
75,383	81,301	79,891	75,252	77,270	Imports	Builders Ironmongery
26,619	28,576	28,884	27,974	33,337	Exports	
15,367	15,704	19,437	16,334	16,085	Imports	Nails & Screws
2,021	2,344	2,394	2,147	2,012	Exports	
34,140	37,689	36,751	34,925	34,194	Imports	Mastics, Putty
25,817	31,059	29,579	28,892	33,318	Exports	
90,710	95,625	101,000	88,872	97,772	Imports	Paints & Varnishes
119,268	149,633	147,485	135,871	147,389	Exports	

\* Due to changes to in European Commission product classifications Bituminous Roofing Felt and Other Asphalt products have been combined. Similarly, Zinc Pipes & Fittings and Other Zinc Building Products have been combined.

\*\* Data for Lead Pipes and Fittings are no longer collected.

## EXTERNAL TRADE

**Table 14 : Value of Overseas Trade in Selected Materials and Components for Constructional Use : Imports (cif) & Exports (fob)**

United Kingdom		Current Prices (£'000)					
		2005	2006	2007	2008	2009	2010
<b>Products &amp; Components (continued)</b>							
Unglazed Ceramic Tiles	Imports	48,737	54,271	64,691	71,099	62,181	56,515
	Exports	2,777	2,475	4,420	3,607	2,424	2,829
Glazed Ceramic Tiles	Imports	285,488	285,080	290,867	279,656	256,303	224,000
	Exports	17,217	21,444	20,554	17,706	15,671	15,455
Ceramic Sanitaryware	Imports	157,865	173,687	181,603	174,194	159,123	168,644
	Exports	48,004	54,231	58,229	53,471	37,635	37,882
Plastic Sanitaryware	Imports	98,663	105,586	126,472	120,004	114,695	112,455
	Exports	68,603	78,717	78,811	83,908	79,444	67,678
Metal Sanitaryware	Imports	110,303	123,203	139,820	143,118	111,737	124,196
	Exports	34,553	32,212	33,511	33,167	31,969	28,271
Flat Glass	Imports	53,410	55,901	71,800	61,061	53,819	61,048
	Exports	51,502	67,142	83,174	107,783	60,380	73,175
Other Glass Products	Imports	67,274	78,695	76,235	98,993	82,857	81,072
	Exports	25,896	31,631	37,712	40,296	34,188	33,081
Wood Veneers	Imports	35,329	40,586	38,516	39,407	26,102	31,672
	Exports	9,663	10,607	10,243	10,034	5,747	5,824
Wood Mouldings	Imports	69,452	79,513	73,907	64,579	55,648	66,802
	Exports	18,922	20,362	18,289	11,169	8,861	9,660
Wood Block Flooring	Imports	117,318	132,978	125,111	125,242	112,661	144,249
	Exports	8,086	8,448	5,465	6,136	5,746	4,535
Other Builder's Woodwork	Imports	78,356	93,869	109,023	101,242	80,645	99,367
	Exports	13,299	21,562	19,079	15,908	14,395	14,320
Windows (wood)	Imports	66,201	71,679	84,257	121,171	110,061	111,362
	Exports	5,693	9,465	12,880	10,219	10,721	7,786
Doors (wood)	Imports	164,036	191,637	205,158	209,133	184,609	217,701
	Exports	29,901	38,546	37,008	26,929	19,395	16,873
Doors & Windows (steel)	Imports	57,661	54,493	40,294	39,652	39,726	36,001
	Exports	20,146	21,231	25,824	26,300	20,643	19,222
Doors & Windows (aluminium)	Imports	61,543	68,235	65,655	63,705	64,279	72,500
	Exports	27,784	35,883	32,687	25,473	24,410	19,949
Doors & Windows (plastic)	Imports	27,227	41,045	39,459	39,377	43,885	46,791
	Exports	63,205	68,641	63,218	56,119	41,193	45,369
Cork Tiles	Imports	2,042	2,540	2,877	2,258	1,779	2,951
	Exports	1,661	2,878	1,611	1,641	1,702	1,646
Linoleum Floor Coverings	Imports	179,151	213,518	242,787	256,585	244,149	279,016
	Exports	178,384	188,215	195,735	224,522	213,628	228,856
Wallpaper	Imports	39,128	40,997	58,962	58,636	54,487	56,599
	Exports	55,455	54,868	67,165	73,506	66,782	82,940
Textile Wall Coverings	Imports	1,314	1,187	1,572	2,833	2,346	3,323
	Exports	485	373	598	500	357	611

Current Prices (£'000)

2010 Q1	Q2	Q3	Q4	2011 Q1	Products & Components (continued)	
13,680 641	13,863 589	15,249 858	13,723 741	14,776 814	Imports Exports	Unglazed Ceramic Tiles
53,279 3,010	56,391 3,877	57,860 4,266	56,470 4,302	57,363 4,517	Imports Exports	Glazed Ceramic Tiles
46,685 8,038	39,629 9,343	39,709 10,341	42,621 10,160	48,751 9,318	Imports Exports	Ceramic Sanitaryware
29,769 17,019	28,099 18,031	28,337 17,854	26,250 14,774	26,881 16,833	Imports Exports	Plastic Sanitaryware
33,463 7,512	27,708 6,202	29,740 6,769	33,285 7,788	35,369 7,773	Imports Exports	Metal Sanitaryware
12,479 16,512	13,948 18,559	16,823 20,330	17,798 17,774	15,137 22,497	Imports Exports	Flat Glass
19,188 7,427	20,836 8,686	22,189 8,404	18,859 8,564	18,861 8,867	Imports Exports	Other Glass Products
7,015 1,249	7,634 1,166	7,225 1,474	9,798 1,935	8,175 1,563	Imports Exports	Wood Veneers
17,649 2,069	18,350 2,816	17,706 2,665	13,097 2,110	18,619 2,398	Imports Exports	Wood Mouldings
35,169 1,067	35,119 1,233	39,610 983	34,351 1,252	35,630 1,129	Imports Exports	Wood Block Flooring
21,144 2,834	26,847 3,593	27,498 3,895	23,878 3,998	21,422 4,206	Imports Exports	Other Builder's Woodwork
26,459 2,266	27,578 1,956	28,847 1,592	28,478 1,972	27,280 2,761	Imports Exports	Windows (wood)
47,102 3,505	56,015 3,961	62,774 4,618	51,810 4,789	49,895 2,795	Imports Exports	Doors (wood)
8,367 4,757	8,233 4,314	9,981 4,730	9,420 5,421	9,107 4,460	Imports Exports	Doors & Windows (steel)
13,835 4,621	16,583 5,437	19,109 5,362	22,973 4,529	15,451 4,952	Imports Exports	Doors & Windows (aluminium)
12,056 14,208	13,600 11,470	9,964 10,460	11,171 9,231	13,071 7,303	Imports Exports	Doors & Windows (plastic)
525 467	875 336	819 435	732 408	1,574 604	Imports Exports	Cork Tiles
66,900 57,461	67,812 62,670	71,308 58,046	72,996 50,679	74,865 55,842	Imports Exports	Linoleum Floor Coverings
14,537 19,872	15,840 21,139	12,587 19,922	13,635 22,007	15,059 22,939	Imports Exports	Wallpaper
758 195	753 103	942 164	870 149	689 138	Imports Exports	Textile Wall Coverings

## EXTERNAL TRADE

**Table 14 : Value of Overseas Trade in Selected Materials and Components for Constructional Use : Imports (cif) & Exports (fob)**

United Kingdom		Current Prices (£'000)					
		2005	2006	2007	2008	2009	2010
<b>Products &amp; Components (continued)</b>							
Fitted Kitchens (assembled)	Imports	88,220	98,938	144,017	171,688	130,058	111,345
	Exports	38,898	34,260	35,322	24,163	17,307	16,121
Prefabricated Buildings (wood)	Imports	18,617	21,986	49,086	40,341	34,264	32,207
	Exports	14,075	22,603	27,807	15,170	13,234	10,546
Prefabricated Buildings (steel)	Imports	25,459	30,281	30,083	50,546	46,291	29,783
	Exports	12,814	42,881	27,464	46,140	48,512	37,140
Prefabricated Buildings (other)	Imports	52,602	67,586	73,414	74,165	44,887	34,323
	Exports	90,503	45,997	35,795	72,310	28,104	17,643
Mobile Homes	Imports	8,300	7,196	7,113	6,574	5,065	2,165
	Exports	12,000	8,574	11,291	7,250	7,750	3,666
Taps & Valves	Imports	209,659	265,657	277,804	315,427	269,199	322,175
	Exports	51,133	62,345	72,708	60,597	64,447	73,198
Pumps (circulating)	Imports	20,706	25,544	24,274	21,754	19,900	21,878
	Exports	24,986	28,407	27,131	27,964	23,603	32,078
Central Heating Boilers	Imports	433,201	473,691	493,841	547,726	566,588	553,885
	Exports	72,126	76,578	70,581	80,756	91,053	74,821
Radiators	Imports	173,674	193,948	197,513	184,218	175,518	189,793
	Exports	30,596	37,707	46,937	57,884	34,303	31,041
Water Heaters	Imports	64,514	75,237	88,897	105,755	105,711	84,618
	Exports	70,225	67,902	64,471	84,810	64,883	63,097
Space Heaters	Imports	139,190	120,029	107,581	110,403	114,047	135,759
	Exports	47,604	39,930	37,313	35,118	32,068	32,000
Fan Systems	Imports	134,486	152,830	198,750	161,772	127,327	172,156
	Exports	94,317	132,081	94,651	114,006	107,846	109,344
Air Conditioning Equipment	Imports	360,514	379,149	514,454	644,353	462,588	526,880
	Exports	218,235	201,257	231,144	268,134	240,594	270,110
Air Purifying Equipment	Imports	37,950	31,441	29,828	41,389	50,854	53,215
	Exports	108,351	114,377	120,706	138,002	102,158	148,637
Hand Driers	Imports	3,887	5,010	4,057	7,634	7,443	8,987
	Exports	1,177	1,036	1,648	1,017	1,247	1,905
Meters	Imports	20,971	25,666	24,502	24,155	24,237	28,701
	Exports	22,699	25,025	26,216	47,988	42,969	52,825
Plugs & Sockets	Imports	183,550	232,657	231,664	269,479	257,049	302,994
	Exports	106,743	169,346	148,672	153,173	137,529	182,351
Electrical Wires	Imports	789,156	1,028,495	1,303,905	1,236,486	909,830	1,213,010
	Exports	392,062	458,568	521,508	554,723	425,815	515,034
Electrical Insulators	Imports	32,793	37,729	30,477	34,957	29,102	30,596
	Exports	38,222	28,858	33,830	32,548	26,983	32,547
Lamps & Fittings	Imports	354,173	392,781	449,230	462,930	424,435	513,974
	Exports	179,800	195,049	221,180	236,971	223,741	216,659
Fire & Security Alarms	Imports	140,511	153,054	144,891	139,973	136,550	151,642
	Exports	130,795	150,929	154,520	182,447	238,608	208,281
Lifts & Escalators	Imports	112,695	104,250	118,401	129,307	115,017	94,205
	Exports	11,664	24,833	43,142	28,699	19,697	14,628

Current Prices (£'000)

2010 Q1	Q2	Q3	Q4	2011 Q1	Products & Components (continued)	
27,437	26,600	31,054	26,254	19,757	Imports	Fitted Kitchens (assembled)
3,469	3,465	4,839	4,348	3,703	Exports	
8,753	9,909	7,737	5,808	7,940	Imports	Prefabricated Buildings (wood)
4,996	1,961	1,957	1,632	1,350	Exports	
4,744	8,700	9,184	7,155	9,402	Imports	Prefabricated Buildings (steel)
9,649	11,858	7,949	7,684	8,958	Exports	
9,228	11,056	9,826	4,213	8,097	Imports	Prefabricated Buildings (other)
4,910	6,374	3,750	2,609	4,378	Exports	
481	908	639	137	139	Imports	Mobile Homes
443	1,333	1,019	871	721	Exports	
81,431	81,771	83,426	75,547	88,207	Imports	Taps & Valves
15,993	17,820	20,031	19,354	16,012	Exports	
6,215	5,433	5,310	4,920	6,358	Imports	Pumps (circulating)
7,357	5,411	13,555	5,755	6,347	Exports	
127,061	135,762	132,789	158,273	149,609	Imports	Central Heating Boilers
17,065	17,127	17,720	22,909	21,311	Exports	
53,683	43,474	45,051	47,585	53,219	Imports	Radiators
7,853	7,732	7,506	7,950	6,829	Exports	
18,243	21,672	23,576	21,127	20,396	Imports	Water Heaters
14,393	17,417	14,708	16,579	18,513	Exports	
26,298	27,813	37,727	43,921	29,952	Imports	Space Heaters
7,662	6,717	7,279	10,342	8,317	Exports	
39,900	44,819	46,599	40,838	44,770	Imports	Fan Systems
24,109	26,657	27,360	31,218	28,965	Exports	
123,682	143,065	142,130	118,003	151,915	Imports	Air Conditioning Equipment
67,136	71,081	64,426	67,467	65,678	Exports	
12,790	11,794	13,833	14,798	16,169	Imports	Air Purifying Equipment
28,119	37,077	41,626	41,815	47,462	Exports	
2,201	2,040	2,281	2,465	2,567	Imports	Hand Driers
285	592	508	520	330	Exports	
7,413	7,449	6,896	6,943	5,776	Imports	Meters
10,351	12,392	16,690	13,392	15,048	Exports	
67,639	75,378	81,297	78,680	83,403	Imports	Plugs & Sockets
42,933	46,425	48,152	44,841	52,492	Exports	
270,201	299,377	318,506	324,926	350,324	Imports	Electrical Wires
127,511	125,699	131,579	130,245	139,409	Exports	
6,612	11,091	6,179	6,714	7,146	Imports	Electrical Insulators
7,780	9,873	7,721	7,173	7,274	Exports	
118,104	123,733	144,377	127,760	121,126	Imports	Lamps & Fittings
49,669	51,480	56,608	58,902	61,201	Exports	
36,029	39,872	40,680	35,061	35,094	Imports	Fire & Security Alarms
75,259	44,356	44,774	43,892	46,336	Exports	
22,327	25,866	24,226	21,786	22,549	Imports	Lifts & Escalators
2,705	3,596	4,185	4,142	6,418	Exports	

© Crown copyright 2011

Published under licence from the Controller of Her Majesty's Stationery Office.

Applications for reproductions should be made in writing to :-

The Copyright Unit, Her Majesty's Stationery Office, St. Clements House,  
2-16 Colegate, Norwich NR3 1BQ

August 2011

URN 11 / 313g

ISSN 0264-6188