

Monthly Statistics of Building Materials and Components

February 2011

No. 432

NOTES

In tables where figures have been rounded to the nearest final digit, there may be an apparent slight discrepancy between the sum of the constituent items and the total as shown.

Symbols. The following symbols have been used throughout.

.. = not available (P) = provisional

- = nil or negligible (R) = revised

All figures are subject to revision.

Unless otherwise stated, revisions are due to more complete information from late returns. For any major revisions an explanation will be provided.

A National Statistics publication

National Statistics are produced to high professional standards set out in the National Statistics Code of Practice. They undergo regular quality assurance reviews to ensure they meet customer needs.

Unless otherwise stated, the statistics published in this volume have been collected by the Office for National Statistics on behalf of the Department for Business, Innovation & Skills.

Lead Statistician: Tony Wilkins

For enquiries or further information about the contents of this publication please contact:

Construction Market Intelligence, 1 Victoria Street,
London, SW1H 0ET;
Telephone : 020 - 7215 - 1555 Fax : 020 - 7215 - 6910
E-mail : materialstats@bis.gsi.gov.uk.

URN 11/313b

2 March 2011

ii

CONTENTS

| | <u>Page</u> |
|--|-------------|
| Table 1 : Construction Material Price Indices | 1 |
| Table 2 : Price Indices of Construction Materials – monthly | 2 & 3 |
| Table 3 : Price Indices of Construction Materials – annual averages | 4 |
| Table 4 : Sales of Sand and Gravel in Great Britain | 5 |
| Table 5 : Sales of Sand and Gravel by English Regions, Wales and Scotland | 6 & 7 |
| Table 6 : Sales of Sand and Gravel by English and Welsh Counties and Scottish Regions | 8 & 9 |
| Table 7 : Slate : Production, Deliveries and Stocks | 10 |
| Chart 1 : Deliveries of Sand & Gravel and Ready-Mixed Concrete | 11 |
| Table 8 : Cement and Clinker : Production, Deliveries and Stocks | 12 |
| Chart 2 : Deliveries of Bricks, Concrete Building Blocks and Cement | 13 |
| Table 9 : Bricks : Production, Deliveries and Stocks for Great Britain | 14 & 15 |
| Table 10 : Bricks : Production, Deliveries and Stocks by English Regions, Wales and Scotland | 16 to 19 |
| Table 11 : Concrete Building Blocks : Production, Deliveries and Stocks for Great Britain | 20 & 21 |
| Table 12 : Concrete Building Blocks : Production, Deliveries and Stocks by English Regions, Wales and Scotland | 22 & 23 |
| Table 13 : Concrete Roofing Tiles; Fibre Cement Products; Ready-Mixed Concrete | 24 |
| Chart 3 : Comparison of Imports and Exports | 25 |
| Table 14 : Value of Overseas Trade in Selected Materials and Components for Constructional Use : Imports (cif) and Exports (fob) | 26 to 35 |

Table 1: Construction Material Price Indices

| United Kingdom | 2005 = 100 | | | | | |
|-----------------------------------|------------|-------|-------|-------|-----------|-----------|
| | 2006 | 2007 | 2008 | 2009 | 2010 | 2011 |
| (a) New Housing | | | | | | |
| January | 101.6 | 109.8 | 115.3 | 119.7 | 122.3 | 130.5 (P) |
| February | 102.6 | 111.7 | 116.8 | 120.6 | 122.9 | |
| March | 103.4 | 112.4 | 117.5 | 120.6 | 123.4 | |
| April | 103.6 | 112.3 | 118.2 | 120.2 | 125.2 | |
| May | 104.6 | 113.7 | 119.0 | 119.8 | 127.2 | |
| June | 105.8 | 114.4 | 118.7 | 119.5 | 128.3 | |
| July | 106.5 | 115.2 | 120.0 | 119.1 | 129.0 | |
| August | 107.6 | 116.3 | 120.5 | 120.2 | 129.5 | |
| September | 107.7 | 116.3 | 120.4 | 121.0 | 129.9 | |
| October | 108.8 | 116.4 | 121.1 | 121.7 | 129.8 | |
| November | 109.5 | 116.0 | 120.4 | 122.6 | 130.5 (P) | |
| December | 110.0 | 115.8 | 119.7 | 122.3 | 130.2 (P) | |
| Annual Average | 106.0 | 114.2 | 119.0 | 120.6 | 127.4 (P) | |
| (b) Other New Work | | | | | | |
| January | 100.5 | 110.1 | 114.3 | 122.9 | 124.6 | 134.8 (P) |
| February | 101.7 | 111.7 | 116.2 | 122.1 | 125.0 | |
| March | 102.7 | 112.1 | 117.3 | 121.6 | 125.9 | |
| April | 103.1 | 112.0 | 119.2 | 120.7 | 129.4 | |
| May | 104.4 | 112.9 | 121.6 | 120.7 | 132.0 | |
| June | 105.6 | 113.3 | 123.7 | 120.7 | 133.8 | |
| July | 106.8 | 113.9 | 126.4 | 120.7 | 133.1 | |
| August | 108.3 | 114.8 | 127.7 | 120.9 | 132.8 | |
| September | 108.7 | 114.4 | 128.6 | 121.8 | 132.9 | |
| October | 109.5 | 114.5 | 129.3 | 123.5 | 132.5 | |
| November | 109.6 | 114.0 | 126.6 | 125.3 | 133.9 (P) | |
| December | 109.9 | 113.6 | 124.7 | 125.0 | 133.7 (P) | |
| Annual Average | 105.9 | 113.1 | 123.0 | 122.2 | 130.8 (P) | |
| (c) Repair and Maintenance | | | | | | |
| January | 101.6 | 111.0 | 116.0 | 122.1 | 125.2 | 134.5 (P) |
| February | 102.4 | 112.9 | 117.2 | 122.0 | 126.1 | |
| March | 103.5 | 113.5 | 117.9 | 121.6 | 126.4 | |
| April | 103.9 | 113.3 | 119.2 | 121.2 | 128.4 | |
| May | 104.8 | 114.4 | 120.4 | 121.0 | 131.0 | |
| June | 106.1 | 115.3 | 121.2 | 120.7 | 132.2 | |
| July | 106.9 | 116.0 | 122.9 | 120.6 | 132.9 | |
| August | 108.5 | 116.9 | 123.7 | 121.7 | 133.4 | |
| September | 109.0 | 117.2 | 123.8 | 122.8 | 133.7 | |
| October | 110.2 | 117.2 | 124.7 | 123.9 | 133.7 | |
| November | 110.8 | 116.6 | 123.5 | 125.2 | 134.5 (P) | |
| December | 111.4 | 116.4 | 122.4 | 125.0 | 134.1 (P) | |
| Annual Average | 106.6 | 115.1 | 121.1 | 122.3 | 131.0 (P) | |
| (d) All Work | | | | | | |
| January | 101.2 | 110.6 | 115.3 | 122.5 | 124.6 | 133.9 (P) |
| February | 102.1 | 112.3 | 116.9 | 122.0 | 125.2 | |
| March | 103.1 | 112.8 | 117.9 | 121.6 | 125.9 | |
| April | 103.5 | 112.6 | 119.2 | 121.0 | 128.5 | |
| May | 104.7 | 113.8 | 121.0 | 120.9 | 131.0 | |
| June | 105.8 | 114.3 | 122.3 | 120.7 | 132.6 | |
| July | 106.9 | 114.7 | 124.4 | 120.6 | 132.4 | |
| August | 108.4 | 115.8 | 125.7 | 121.1 | 132.5 | |
| September | 108.7 | 116.0 | 126.2 | 122.1 | 132.5 | |
| October | 109.8 | 116.0 | 126.9 | 123.4 | 132.2 | |
| November | 110.2 | 115.5 | 125.0 | 124.9 | 133.4 (P) | |
| December | 110.6 | 115.2 | 123.5 | 124.7 | 133.2 (P) | |
| Annual Average | 106.3 | 114.1 | 122.0 | 122.1 | 130.3 (P) | |

Note: These indices are weighted averages of Producer Price Indices. They do not include electrical or mechanical engineering materials.

Source ONS/BIS

PRICES

Table 2: Price Indices of Construction Materials

| United Kingdom | 2010 | | | | | | |
|---|-------|-------|-------|-------|-------|-------|-------|
| | Jan | Feb | Mar | Apr | May | Jun | Jul |
| AGGREGATES | | | | | | | |
| Coated roadstone - including levy | 149.0 | 147.1 | 145.3 | 149.2 | 147.9 | 153.3 | 150.7 |
| - excluding levy | 148.7 | 146.6 | 146.9 | 150.9 | 149.7 | 155.4 | 152.7 |
| Crushed rock - including levy | 103.8 | 109.1 | 110.5 | 108.1 | 112.7 | 107.2 | 120.5 |
| - excluding levy | 96.4 | 103.5 | 104.8 | 101.6 | 107.4 | 101.0 | 118.1 |
| Sand & gravel - including levy | 109.4 | 109.0 | 110.0 | 110.4 | 103.0 | 107.1 | 107.0 |
| - excluding levy | 104.2 | 103.7 | 104.9 | 105.3 | 96.8 | 101.6 | 101.5 |
| CEMENT AND CONCRETE | | | | | | | |
| Cement | 131.6 | 132.3 | 133.8 | 133.8 | 133.9 | 133.7 | 133.4 |
| Ready-mixed concrete | 106.5 | 106.2 | 111.6 | 112.5 | 112.4 | 111.4 | 111.3 |
| Plasterboard etc | .. | .. | .. | .. | .. | .. | .. |
| Pre-cast concrete products | 117.2 | 117.8 | 117.4 | 116.8 | 116.8 | 116.9 | 117.3 |
| of which : Blocks, bricks, tiles & flagstones | 120.8 | 121.7 | 121.1 | 120.2 | 120.2 | 120.4 | 120.8 |
| Concrete reinforcing bars | 123.0 | 126.0 | 133.1 | 153.9 | 157.9 | 153.0 | 150.1 |
| CLAY PRODUCTS | | | | | | | |
| All Bricks | 114.5 | 115.9 | 118.6 | 118.9 | 119.0 | 119.9 | 119.6 |
| Ceramic tiles | 86.3 | 86.0 | 85.9 | 91.5 | 91.6 | 91.4 | 91.4 |
| Ceramic sanitaryware | 133.6 | 130.3 | 130.7 | 136.7 | 134.8 | 134.8 | 135.3 |
| TIMBER AND JOINERY | | | | | | | |
| Imported hardwood * | .. | .. | 126.8 | 135.8 | 136.5 | 141.8 | 142.1 |
| Imported softwood * | 148.8 | 148.8 | 150.2 | 153.4 | 157.8 | 160.0 | 164.5 |
| Imported plywood * | 134.8 | 138.8 | 145.4 | 154.1 | 162.8 | 167.0 | 165.3 |
| Sawn wood | 128.9 | 130.3 | 128.0 | 132.8 | 138.6 | 131.4 | 136.6 |
| Particle Board | 111.5 | 112.5 | 113.4 | 114.0 | 115.3 | 117.6 | 118.4 |
| Builders woodwork | 122.1 | 123.1 | 123.0 | 124.0 | 124.5 | 124.7 | 126.1 |
| of which : Doors & windows | 128.5 | 128.5 | 128.7 | 129.8 | 129.9 | 130.0 | 131.8 |
| METAL PRODUCTS | | | | | | | |
| Fabricated structural steel | 99.7 | 99.5 | 101.6 | 110.3 | 116.9 | 125.8 | 130.2 |
| Doors & windows** | 90.3 | 90.4 | 90.9 | 89.6 | 90.6 | 90.6 | 90.6 |
| Other Builders Ironmongery * | .. | .. | .. | .. | .. | .. | .. |
| Central heating boilers * | 111.4 | 111.4 | 111.4 | 113.8 | 113.8 | 113.8 | 113.8 |
| Central heating pumps * | .. | .. | .. | .. | .. | .. | .. |
| Taps and Valves for sanitaryware * | 156.3 | 156.0 | 156.0 | 156.0 | 159.3 | 159.5 | 159.1 |
| Metal sanitaryware * | .. | .. | .. | .. | .. | .. | .. |
| PLASTIC PRODUCTS | | | | | | | |
| Pipes and fittings (rigid) | 120.8 | 120.9 | 120.9 | 120.5 | 117.2 | 120.0 | 120.7 |
| Pipes and fittings (flexible)** | 128.3 | 128.2 | 128.1 | 128.1 | 128.1 | 129.4 | 131.8 |
| Sanitaryware | 114.5 | 114.5 | 114.5 | 114.5 | 114.5 | 114.5 | 114.5 |
| Doors & windows** | 108.1 | 107.9 | 107.9 | 107.9 | 108.1 | 107.8 | 108.0 |
| OTHER BUILDING MATERIALS | | | | | | | |
| Asphalt products * | 159.2 | 157.2 | 160.6 | 161.2 | 160.3 | 160.3 | 161.4 |
| Insulating materials (thermal or acoustic) ** | 102.4 | 102.0 | 105.5 | 104.6 | 103.2 | 102.2 | .. |
| Paint (aqueous) | 119.2 | .. | .. | .. | .. | .. | .. |
| Paint (non-aqueous)** | 112.9 | 113.6 | 113.6 | 113.6 | 113.6 | 113.6 | 113.8 |
| Lighting equipment for buildings* | 109.7 | 109.7 | 109.7 | 109.7 | 109.7 | 109.7 | 109.7 |
| Lighting equipment for roads | 109.6 | 109.6 | 109.8 | 110.5 | 110.5 | 110.5 | 111.1 |
| Electric heating apparatus | .. | .. | .. | .. | .. | .. | .. |
| Electric water heaters * | 134.5 | 132.2 | 135.5 | 135.7 | 137.5 | 137.7 | 137.7 |
| Kitchen furniture | 107.4 | 107.5 | 107.5 | 107.5 | 107.5 | 110.6 | 111.4 |

Notes : 1. Most of these indices, which are compiled by the Office for National Statistics, are a selection of producer price indices.

The complete list is available online at www.statistics.gov.uk, by searching for the reference MM22.

*The Office for National Statistics state that these Indices are based on relatively few quotes and in the long term should not be relied upon for contractual purposes.

* * These index values are considered less reliable mainly due to lack of market coverage.

2005=100

| | | | | | | 2011 |
|-------|-----------|-----------|-----------|-------|-------|---|
| Aug | Sep | Oct | Nov | Dec | Jan | |
| | | | | | | (P) |
| | | | | | | AGGREGATES |
| 148.9 | 149.1 | .. | .. | .. | .. | Coated roadstone - including levy |
| 150.9 | 151.2 | .. | .. | .. | .. | - excluding levy |
| 120.6 | 120.6 | .. | .. | .. | .. | Crushed rock - including levy |
| 118.2 | 118.3 | .. | .. | .. | .. | - excluding levy |
| 106.0 | 106.0 | .. | .. | .. | .. | Sand & gravel - including levy |
| 100.3 | 100.4 | .. | .. | .. | .. | - excluding levy |
| | | | | | | CEMENT AND CONCRETE |
| 133.3 | 133.3 | 133.1 | 133.2 | 133.0 | 133.0 | Cement |
| 110.1 | 110.9 | 111.1 | 110.4 | 111.4 | 111.8 | Ready-mixed concrete |
| .. | .. | .. | .. | .. | .. | Plasterboard etc |
| 117.2 | 117.4 | 118.1 | 118.1 | 118.3 | 119.4 | Pre-cast concrete products |
| 120.7 | 120.8 | 121.7 | 121.8 | 122.1 | 123.2 | of which : Blocks, bricks, tiles & flagstones |
| 149.2 | 149.4 | 147.5 | 144.3 (P) | 147.1 | 152.4 | Concrete reinforcing bars |
| | | | | | | CLAY PRODUCTS |
| 121.2 | 120.4 | 119.8 | 119.3 | 118.9 | 118.3 | All Bricks |
| 91.4 | 91.1 | 91.1 (P) | 91.5 (P) | 91.5 | 91.3 | Ceramic tiles |
| 135.3 | 135.3 | 135.3 | 135.3 | 135.3 | 138.5 | Ceramic sanitaryware |
| | | | | | | TIMBER AND JOINERY |
| 141.6 | 141.9 | .. | .. | .. | .. | Imported hardwood * |
| 167.2 | 167.6 | .. | .. | .. | .. | Imported softwood |
| 164.9 | 166.2 | .. | .. | .. | .. | Imported plywood * |
| 137.9 | 139.7 | 139.9 | 138.8 | 138.4 | 138.1 | Sawn wood |
| 118.7 | 119.0 | 120.2 | 123.3 | 123.7 | 124.8 | Particle Board |
| 127.1 | 127.6 (R) | 127.6 | 127.9 | 128.6 | 127.7 | Builders woodwork |
| 132.1 | 133.2 | 132.7 | 132.4 | 132.6 | 132.6 | of which : Doors & windows |
| | | | | | | METAL PRODUCTS |
| 130.0 | 128.4 | 125.8 | 125.4 (P) | 123.5 | 124.1 | Fabricated structural steel |
| 92.1 | 92.5 | 92.1 | 92.1 | 93.0 | 93.2 | Doors & windows** |
| .. | .. | .. | .. | .. | .. | Other Builders Ironmongery* |
| 113.7 | 113.7 | 114.0 | 114.2 | 116.1 | 117.2 | Central heating boilers * |
| .. | .. | .. | .. | .. | .. | Central heating pumps* |
| 159.1 | 159.1 | 159.1 (P) | 159.4 (P) | 159.5 | 163.4 | Taps and Valves for sanitaryware * |
| .. | .. | .. | .. | .. | .. | Metal sanitaryware * |
| | | | | | | PLASTIC PRODUCTS |
| 123.3 | 123.7 | 123.8 | 123.0 | 123.5 | 123.7 | Pipes and fittings (rigid) |
| 132.3 | 132.3 | 132.3 (P) | 132.3 (P) | 132.3 | 132.3 | Pipes and fittings (flexible)** |
| 114.5 | 114.5 | 115.2 | 115.2 | 115.2 | 115.5 | Sanitaryware |
| 108.0 | 108.0 | 107.9 (P) | 108.8 (P) | 108.9 | 108.6 | Doors & windows ** |
| | | | | | | OTHER BUILDING MATERIALS |
| 164.6 | 162.9 | 165.3 | 163.8 | 167.8 | 173.6 | Asphalt products * |
| 102.3 | 102.7 | 104.2 | 103.6 | 103.1 | 102.9 | Insulating materials (thermal or acoustic)** |
| .. | .. | .. | .. | .. | .. | Paint (aqueous) |
| 113.9 | 114.1 | 114.2 | 115.4 | 115.5 | 120.9 | Paint (non-aqueous)** |
| 103.9 | 103.9 | 104.7 | 104.7 | 104.7 | 105.2 | Lighting equipment for buildings* |
| 111.1 | 111.1 | 111.1 | 111.1 | 111.1 | 111.8 | Lighting equipment for roads |
| .. | .. | .. | .. | .. | .. | Electric heating apparatus * |
| 138.3 | 138.4 | 137.2 | 137.8 | 138.4 | 138.6 | Electric water heaters* |
| 111.2 | 111.2 | 110.3 | 108.6 | 108.6 | 108.9 | Kitchen furniture |

Source : ONS

Note: Due to reclassification work by the ONS data for Aggregates and Imported Wood was not available at the time of publication

PRICES

Table 3: Price Indices of Construction Materials - Annual Averages

| United Kingdom | 2005=100 | | | | | |
|--|----------|-------|-------|-------|-------|-------------|
| | 2005 | 2006 | 2007 | 2008 | 2009 | 2010 (P) |
| AGGREGATES | | | | | | |
| Coated roadstone - old | | | | | | |
| - including levy | 100.0 | 108.2 | 113.8 | 130.0 | 140.8 | .. |
| - excluding levy | 99.9 | 107.5 | 113.7 | 129.7 | 140.4 | .. |
| Crushed rock - old | | | | | | |
| - including levy | 98.6 | 96.1 | 95.2 | 103.4 | 112.3 | .. |
| - excluding levy | 98.4 | 94.5 | 93.6 | 100.6 | 108.4 | .. |
| Sand & gravel - old | | | | | | |
| - including levy | 101.2 | 105.3 | 109.9 | 117.5 | 112.0 | .. |
| - excluding levy | 100.9 | 105.7 | 110.9 | 116.3 | 107.5 | .. |
| CEMENT AND CONCRETE | | | | | | |
| Cement | 100.0 | 108.8 | 114.7 | 128.4 | 138.5 | 133.2 |
| Ready-mixed concrete | 100.6 | 107.7 | 106.7 | 113.4 | 110.8 | 110.5 |
| Plasterboard etc | 100.1 | 99.3 | 101.8 | 104.7 | .. | .. |
| Pre-cast concrete products | 100.0 | 102.3 | 110.6 | 114.4 | 118.7 | 117.4 |
| of which: Blocks, bricks, tiles & flagstones | 100.0 | 103.3 | 112.8 | 115.4 | 121.1 | 121.0 |
| Concrete re-inforcing bars | 100.0 | 112.9 | 129.8 | 158.3 | 125.9 | 144.5 |
| Fibre Cement Products | 100.1 | 106.7 | 116.8 | 124.2 | .. | .. |
| CLAY PRODUCTS | | | | | | |
| All Bricks | 98.0 | 104.3 | 111.1 | 109.0 | 117.2 | 118.8 |
| Ceramic tiles | 98.7 | 102.0 | 84.8 | 81.0 | 82.6 | 90.1 |
| Ceramic sanitaryware | 100.1 | 102.5 | 112.6 | 119.9 | 130.7 | 134.4 |
| TIMBER AND JOINERY | | | | | | |
| Imported Softwood | 100.3 | 107.9 | 133.6 | 123.6 | 127.5 | .. |
| Imported Plywood | 100.1 | 100.8 | 106.5 | 120.7 | 124.1 | .. |
| Sawn Wood | 100.0 | 103.1 | 122.0 | 127.8 | 118.7 | 135.1 |
| Particle Board | 99.4 | 102.6 | 112.7 | 113.8 | 111.4 | 117.3 |
| Builders woodwork | 99.4 | 102.2 | 108.0 | 113.6 | 119.7 | 125.5 |
| of which | | | | | | |
| Doors & windows | 99.7 | 101.7 | 108.7 | 116.7 | 127.1 | 130.9 |
| METAL PRODUCTS | | | | | | |
| Fabricated structural steel | 100.0 | 99.8 | 118.1 | 137.2 | 106.0 | 118.1 |
| Doors & windows | 101.4 | 101.2 | 87.5 | 87.0 | 89.8 | 91.2 |
| Screws etc | 94.4 | 106.1 | 105.9 | 106.6 | .. | .. |
| Other builders' ironmongery | 99.9 | 102.4 | 105.3 | 108.5 | .. | .. |
| Central heating boilers | 99.9 | 102.3 | 105.0 | 106.3 | 109.8 | 113.4 |
| Central heating pumps | 100.7 | 108.2 | 114.5 | 120.2 | .. | .. |
| Taps & valves (domestic) | 98.7 | .. | .. | 136.6 | 152.1 | 158.2 |
| Metal sanitaryware | 100.0 | 103.5 | 108.3 | 106.3 | .. | .. |
| Copper pipes | 108.5 | 168.1 | 163.2 | 154.1 | .. | .. |
| PLASTIC PRODUCTS | | | | | | |
| Pipes and fittings (rigid) | 99.2 | 103.9 | 112.2 | 118.1 | 121.4 | 121.5 |
| Pipes and fittings (flexible) | 99.8 | 104.4 | 110.6 | 115.3 | 129.9 | 130.3 |
| Sanitaryware | 100.2 | 100.9 | 102.6 | 112.0 | 113.7 | 114.7 |
| Doors & windows | 99.9 | 101.3 | 103.5 | 106.2 | 107.9 | 108.1 |
| Floor covering | 100.1 | 107.8 | 109.8 | .. | .. | .. |
| OTHER BUILDING MATERIALS | | | | | | |
| Worked monumental or building stone | 100.0 | 106.3 | .. | .. | .. | .. |
| Asphalt products | 98.4 | 120.6 | 132.2 | 140.4 | 151.4 | 162.1 |
| Insulating materials (thermal or acoustic) | 99.9 | 102.5 | 106.0 | 105.6 | 104.0 | 103.2 |
| Paint (aqueous) | 99.8 | 101.7 | 104.6 | 112.7 | 118.3 | .. |
| Paint (non-aqueous) | 99.7 | 100.8 | 102.6 | 110.0 | 113.0 | 114.0 |
| Lighting equipment for buildings | 100.1 | .. | .. | 102.3 | 107.4 | 107.5 |
| Lighting equipment for roads | 99.5 | 98.7 | 100.9 | 105.2 | 112.3 | 110.6 |
| Electric heating apparatus | 100.0 | 101.8 | 105.4 | 112.0 | .. | .. |
| Electric water heaters | 100.4 | 111.6 | 119.8 | 122.3 | 132.6 | 136.7 |
| Kitchen furniture | 100.0 | 96.7 | 99.7 | 103.6 | 106.6 | 109.1 |

Source : ONS

Note : These indices, which are compiled by the Office for National Statistics, are a selection of producer price indices. The complete list is published monthly by HMSO in the Business Monitor MM22.

MINING AND QUARRYING

Table 4 : Sales of Sand and Gravel in Great Britain

| Great Britain | | Thousand tonnes | | | | | |
|---------------|--------------|-----------------|-----------------------------|--------------------------|----------------------------------|--------------------------|-----------------------|
| | Sand | | Gravel | Sand & Gravel | Sand, Gravel & Hoggin | Sand & Gravel | of which |
| | for Building | for Concreting | for Concreting & other uses | for Coating | for Fill | Total | Marine-Dredged |
| 2000 | 12,105 | 30,128 | 30,355 | 2,150 | 13,127 | 87,865 | 14,356 |
| 2001 | 13,926 | 33,675 | 36,799 | 2,596 | 10,460 | 97,456 | 13,611 |
| 2002 | 11,152 | 30,334 | 35,642 | 2,106 | 6,279 | 85,513 | 12,833 |
| 2003 | 11,474 | 31,349 | 31,725 | 1,493 | 6,498 | 82,539 | 12,249 |
| 2004 | 11,017 | 32,366 | 30,184 | 1,380 | 6,399 | 81,346 | 12,996 |
| 2005 | 12,419 | 30,704 | 30,648 | 1,569 | 5,173 | 80,513 | 13,025 |
| 2006 | 9,499 | 29,893 | 31,963 | 2,346 | 4,195 | 77,896 | 13,974 |
| 2007 | 8,649 | 29,803 | 31,114 | 1,695 | 4,254 | 75,515 | 13,777 |
| 2008 | 8,864 | 28,922 | 28,297 | .. | .. | 74,651 | 12,582 |
| 2009 | 7,270 | 21,582 | .. | .. | .. | 58,482 | 9,589 |
| 2010 (P) | 6,068 | 19,930 | .. | .. | .. | 54,565 | 9,359 |
| 2004 Q4 | 2,435 | 7,590 | 7,037 | 410 | 1,543 | 19,015 | 3,121 |
| 2005 Q1 | 3,141 | 7,180 | 7,271 | 376 | 986 | 18,954 | 3,040 |
| Q2 | 3,467 | 8,490 | 8,226 | 439 | 1,553 | 22,175 | 3,519 |
| Q3 | 3,246 | 8,054 | 8,201 | 398 | 1,422 | 21,321 | 3,491 |
| Q4 | 2,565 | 6,980 | 6,950 | 356 | 1,212 | 18,063 | 2,975 |
| 2006 Q1 | 2,189 | 7,100 | 7,058 | 523 | 919 | 17,789 | 2,927 |
| Q2 | 2,582 | 8,126 | 9,032 | 623 | 1,174 | 21,537 | 4,531 |
| Q3 | 2,603 | 7,725 | 8,602 | 640 | 1,144 | 20,714 | 3,498 |
| Q4 | 2,125 | 6,942 | 7,271 | 560 | 958 | 17,856 | 3,018 |
| 2007 Q1 | 2,081 | 6,919 | 7,242 | 443 | 904 | 17,589 | 3,177 |
| Q2 | 2,305 | 7,762 | 8,202 | 432 | 1,179 | 19,880 | 3,596 |
| Q3 | 2,304 | 7,829 | 8,191 | 398 | 1,162 | 19,884 | 3,675 |
| Q4 | 1,959 | 7,293 | 7,479 | 422 | 1,009 | 18,162 | 3,329 |
| 2008 Q1 | 2,151 | 7,156 | 7,286 | 379 | 1,180 | 18,152 | 3,035 |
| Q2 | 2,385 | 7,724 | 7,668 | 456 | 2,041 | 20,274 | 3,541 |
| Q3 | 2,279 | 7,644 | 7,091 | .. | .. | 19,341 | 3,337 |
| Q4 | 2,049 | 6,398 | 6,252 | 490 | 1,695 | 16,884 | 2,669 |
| 2009 Q1 | 1,727 | 5,313 | 5,330 | 695 | 1,566 | 14,631 | 2,389 |
| Q2 | 1,916 | 5,637 | 5,756 | .. | .. | 15,359 | 2,637 |
| Q3 | 1,992 | 5,598 | .. | .. | .. | 14,878 | 2,457 |
| Q4 | 1,635 | 5,034 | .. | .. | 1,432 | 13,614 | 2,106 |
| 2010 Q1 | 1,539 | 4,952 | .. | .. | .. | 13,711 | 2,131 |
| Q2 | 1,585 | 4,983 | .. | .. | .. | 13,940 | 2,444 |
| Q3 | 1,584 | 5,268 | .. | .. | .. | 14,112 | 2,592 |
| Q4 (P) | 1,360 | 4,727 | .. | .. | .. | 12,802 | 2,192 |

Note : The figures above are from a quarterly sample inquiry whereas those below are from the Annual Minerals Raised Inquiry, a census.

The two inquiries differ because some respondents are only able to provide estimated information for the quarterly inquiry.

| | | | | | | | |
|------|--------|--------|--------|-------|--------|--------|--------|
| 1999 | 11,356 | 31,730 | 31,614 | 2,585 | 10,924 | 88,209 | 13,424 |
| 2000 | 11,758 | 31,167 | 31,797 | 2,461 | 12,051 | 89,234 | 14,356 |
| 2001 | 11,515 | 31,656 | 35,135 | 2,257 | 7,647 | 88,210 | 13,611 |
| 2002 | 11,190 | 31,224 | 32,434 | 2,031 | 5,842 | 82,721 | 12,832 |
| 2003 | 11,851 | 31,411 | 30,236 | 1,766 | 4,957 | 80,221 | 12,131 |
| 2004 | 10,688 | 32,529 | 32,346 | 2,437 | 8,058 | 86,057 | 12,996 |
| 2005 | 11,558 | 29,848 | 32,163 | 2,172 | 6,651 | 82,392 | 13,024 |
| 2006 | 9,907 | 29,815 | 31,002 | 2,648 | 6,869 | 80,242 | 13,974 |
| 2007 | 9,877 | 30,202 | 29,350 | 2,636 | 6,436 | 78,501 | 13,777 |
| 2008 | 8,527 | 26,885 | 23,388 | 2,222 | 11,106 | 72,127 | 12,621 |
| 2009 | 6,296 | 21,570 | 19,553 | 2,270 | 6,021 | 55,709 | 9,592 |

MINING AND QUARRYING

Table 5 : Sales of Sand and Gravel by Standard region, Wales and Scotland

| | Sand | | Gravel | Sand & Gravel | Sand, Gravel & Hoggin | Sand & Gravel | of which |
|-------------------------|--------------|----------------|-----------------------------|--------------------------|----------------------------------|--------------------------|-----------------------|
| | for Building | for Concreting | for Concreting & other uses | for Coating | for Fill | Total | Marine-Dredged |
| <u>(a) Q3 2010</u> | | | | | | | |
| North East | 25 | .. | .. | .. | 17 | .. | .. |
| Yorkshire & the Humber | 127 | 333 | 313 | 526 | .. | .. | .. |
| North West | 232 | 195 | .. | 42 | .. | 497 | 28 |
| West Midlands | 122 | 556 | 611 | .. | .. | 1,395 | 0 |
| East Midlands | 132 | 630 | 561 | 58 | 71 | 1,452 | 0 |
| East of England | 246 | 840 | 968 | .. | 187 | .. | .. |
| South East | 202 | 1,337 | 1,452 | 61 | 202 | 3,254 | 2,025 |
| South West | 132 | 548 | .. | .. | 285 | 1,507 | 127 |
| Wales | 161 | .. | 80 | .. | 30 | 410 | 191 |
| Scotland | 205 | 534 | 468 | 111 | 134 | 1,452 | 0 |
| Great Britain | 1,584 | 5,268 | .. | .. | .. | 14,112 | 2,592 |
| of which marine-dredged | 162 | 1,225 | .. | .. | .. | 2,592 | |
| <u>(b) Q3 2009</u> | | | | | | | |
| North East | 19 | .. | .. | .. | .. | .. | .. |
| Yorkshire & the Humber | 204 | 361 | 382 | 5 | 45 | 997 | 5 |
| North West | 198 | 271 | 28 | 26 | 45 | 568 | 34 |
| West Midlands | 227 | 738 | 808 | 23 | 60 | 1,856 | 0 |
| East Midlands | 156 | 690 | 689 | 32 | 86 | 1,653 | 0 |
| East of England | .. | .. | .. | 156 | .. | .. | .. |
| South East | .. | 1,260 | .. | .. | 291 | 3,608 | 1,917 |
| South West | .. | 582 | .. | .. | 243 | 1,418 | 114 |
| Wales | 127 | 190 | .. | .. | .. | 463 | 211 |
| Scotland | 200 | 531 | 443 | 114 | 146 | 1,434 | 0 |
| Great Britain | 1,992 | 5,598 | .. | .. | .. | 14,878 | 2,457 |
| of which marine-dredged | 129 | 1,116 | .. | .. | .. | 2,457 | |

Note : Regions refer to Government Office Regions

MINING AND QUARRYING

Thousand tonnes

| | Sand | | Gravel | Sand & Gravel | Sand, Gravel & Hoggin | Sand & Gravel | of which |
|-------------------------|--------------|----------------|-----------------------------|--------------------------|----------------------------------|--------------------------|-----------------------|
| | for Building | for Concreting | for Concreting & other uses | for Coating | for Fill | Total | Marine-Dredged |
| <u>(c) Annual 2009</u> | | | | | | | |
| North East | 76 | .. | .. | .. | .. | .. | .. |
| Yorkshire & the Humber | 659 | 1,356 | 1,362 | 278 | 198 | 3,853 | 53 |
| North West | 811 | 1,055 | .. | 104 | .. | 2,327 | 132 |
| West Midlands | 885 | 2,855 | 3,104 | .. | 287 | .. | 0 |
| East Midlands | 542 | 2,630 | 2,609 | 114 | 318 | 6,213 | 0 |
| East of England | .. | .. | .. | 619 | .. | .. | .. |
| South East | .. | 4,626 | .. | .. | 1,293 | 14,036 | 7,318 |
| South West | .. | 2,314 | .. | .. | 987 | .. | 451 |
| Wales | 537 | .. | .. | .. | .. | .. | .. |
| Scotland | 692 | 2,150 | 1,722 | 425 | 736 | 5,725 | 0 |
| Great Britain | 7,270 | 21,582 | .. | .. | .. | 58,482 | 9,589 |
| of which marine-dredged | 524 | 4,200 | .. | .. | .. | 9,589 | |
| <u>(d) Annual 2008</u> | | | | | | | |
| North East | 204 | .. | .. | .. | .. | .. | .. |
| Yorkshire & the Humber | 511 | 1,839 | 1,802 | .. | .. | 4,604 | 101 |
| North West | 1,070 | 1,587 | .. | 116 | .. | .. | .. |
| West Midlands | 987 | 3,917 | 4,071 | .. | .. | 9,594 | 0 |
| East Midlands | 725 | 3,349 | 2,832 | .. | .. | 7,235 | 0 |
| East of England | 902 | 4,378 | 4,885 | 510 | 2,315 | 12,990 | 703 |
| South East | 2,255 | 5,983 | 8,625 | .. | .. | 17,729 | 9,052 |
| South West | 780 | .. | .. | .. | .. | .. | .. |
| Wales | 647 | .. | .. | .. | .. | .. | .. |
| Scotland | 783 | 3,089 | 2,700 | 511 | 878 | 7,961 | 0 |
| Great Britain | 8,864 | 28,922 | 28,297 | .. | .. | 74,651 | 12,582 |
| of which marine-dredged | 738 | 5,727 | 5,816 | .. | .. | 12,582 | |

Note : Regions refer to Government Office Regions

MINING AND QUARRYING

Table 6 : Sales of Sand and Gravel by English & Welsh County and Scottish Region

Thousand tonnes

| | 2009 | | | 2010 | | |
|-----------------------------------|-----------|-----------|-----------|-----------|-----------|-----------|
| | Quarter 2 | Quarter 3 | Quarter 4 | Quarter 1 | Quarter 2 | Quarter 3 |
| NORTH EAST | .. | .. | .. | .. | .. | .. |
| Northumberland | 97 | 99 | 283 | 238 | 236 | 253 |
| Tyne and Wear * | 21 | 22 | .. | .. | .. | .. |
| Durham | .. | .. | .. | .. | .. | .. |
| Cleveland * | .. | .. | .. | .. | .. | .. |
| YORKSHIRE & THE HUMBER | 934 | .. | 822 | .. | .. | .. |
| North Yorkshire (| 517 | 498 | 429 | 402 | 385 | 434 |
| West Yorkshire (| .. | 43 | 34 | 49 | 50 | 53 |
| South Yorkshire | 417 | 216 | 179 | 625 | 628 | 640 |
| Humberside * | .. | .. | 180 | 200 | .. | .. |
| NORTH WEST | 615 | 568 | 538 | 509 | 474 | 497 |
| Cumbria | 153 | 145 | 138 | 143 | 127 | 130 |
| Lancashire | 77 | 73 | 70 | 69 | 69 | 72 |
| Merseyside * | 35 | 35 | 32 | 23 | 19 | 28 |
| Greater Manchester | 76 | 74 | 70 | 69 | 64 | 66 |
| Cheshire | 274 | 241 | 228 | 205 | 195 | 201 |
| WEST MIDLANDS | .. | 1,856 | 1,712 | 1,567 | 1,426 | 1,395 |
| Shropshire (| 1,319 | 152 | .. | 128 | .. | 117 |
| Staffordshire (| .. | 1,196 | 1,098 | 1,090 | 1,007 | 971 |
| West Midlands | 104 | .. | .. | .. | .. | .. |
| Warwickshire | 202 | .. | 193 | 126 | 117 | .. |
| Hereford & Worcester | 196 | 201 | 184 | .. | 131 | 133 |
| EAST MIDLANDS | 1,666 | 1,653 | 1,484 | 1,442 | 1,281 | 1,452 |
| Derbyshire (| 745 | .. | .. | 212 | 188 | 212 |
| Nottinghamshire (| .. | 515 | 464 | 454 | 400 | 449 |
| Leicestershire | 287 | 282 | 251 | 221 | 194 | .. |
| Northamptonshire (| 634 | .. | .. | 58 | 52 | .. |
| Lincolnshire (| .. | 549 | 492 | 497 | 447 | 509 |
| EAST OF ENGLAND | 2,815 | .. | .. | .. | .. | .. |
| Cambridgeshire | 598 | 587 | 519 | 500 | 522 | 551 |
| Norfolk (| 800 | 397 | 331 | 368 | 369 | 386 |
| Suffolk * | (| .. | .. | .. | .. | .. |
| Essex * | .. | .. | .. | .. | .. | .. |
| Bedfordshire (| 539 | 338 | 290 | 270 | 256 | .. |
| Hertfordshire (| .. | .. | 159 | 165 | .. | .. |
| SOUTH EAST | 3,695 | 3,608 | 3,330 | 3,018 | 3,161 | 3,254 |
| Buckinghamshire | 124 | 122 | 128 | 107 | 104 | 104 |
| Oxfordshire | 217 | 220 | 200 | 97 | 88 | 80 |
| Berkshire | 278 | 258 | 316 | 187 | 177 | 176 |
| Greater London * | 1,009 | 945 | 856 | 806 | 820 | 908 |
| Surrey | 253 | 257 | 220 | 229 | 226 | 217 |
| Kent * | 928 | 909 | 779 | 772 | 805 | 836 |
| Sussex East * | .. | .. | .. | .. | .. | .. |
| Sussex West * | .. | .. | .. | .. | .. | 164 |
| Hampshire * | 623 | 623 | 575 | 573 | 621 | 623 |
| Isle of Wight | 20 | 20 | .. | .. | .. | .. |

Note : Regions refer to Government Office Regions

* Includes marine-dredged.

MINING AND QUARRYING

Thousand tonnes

| | 2009 | | | 2010 | | |
|-----------------------|-----------|-----------|-----------|-----------|-----------|-----------|
| | Quarter 2 | Quarter 3 | Quarter 4 | Quarter 1 | Quarter 2 | Quarter 3 |
| SOUTH WEST | 1,555 | 1,418 | 1,265 | 1,306 | 1,540 | 1,507 |
| Gloucestershire | 314 | 273 | 235 | 283 | 339 | 335 |
| Wiltshire | 227 | 203 | 175 | 196 | 230 | 226 |
| Avon * | .. | .. | .. | .. | .. | 88 |
| Somerset * | .. | .. | .. | .. | .. | .. |
| Dorset * | .. | .. | .. | .. | .. | .. |
| Devon * | .. | .. | .. | .. | .. | .. |
| Cornwall | .. | .. | .. | .. | .. | 243 |
| ENGLAND | 13,312 | 12,981 | 11,837 | 11,709 | 11,827 | 12,250 |
| WALES | 533 | 463 | 448 | 465 | 483 | 410 |
| Clwyd | .. | .. | .. | 211 | 200 | 154 |
| Gwynedd * | .. | .. | .. | .. | .. | .. |
| Powys | 0 | 0 | 0 | 0 | 0 | 0 |
| Dyfed * | .. | .. | .. | .. | .. | 82 |
| Glamorgan West * | .. | .. | .. | .. | .. | .. |
| Glamorgan South * | .. | .. | .. | .. | .. | 32 |
| Gwent * | 105 | 79 | 80 | 74 | .. | .. |
| SCOTLAND | 1,514 | 1,434 | 1,329 | 1,537 | 1,630 | 1,452 |
| South of Scotland | 136 | 131 | 124 | 96 | 106 | 92 |
| North East Scotland | 160 | 145 | 144 | 219 | 223 | 201 |
| Highlands | 135 | 123 | 119 | 134 | 136 | 122 |
| Island Areas | 21 | 19 | 19 | 12 | 12 | 10 |
| East Central Scotland | 107 | 99 | 97 | 100 | 99 | 88 |
| West Central Scotland | 511 | 501 | 453 | 557 | 593 | 529 |
| Tayside and Fife | 444 | 416 | 373 | 419 | 461 | 410 |
| GREAT BRITAIN | 15,359 | 14,878 | 13,614 | 13,711 | 13,940 | 14,112 |

Note : Regions refer to Government Office Regions

* Includes marine-dredged.

MINING AND QUARRYING

Table 7 : Slate - Production, Deliveries and Stocks

Great Britain

Tonnes

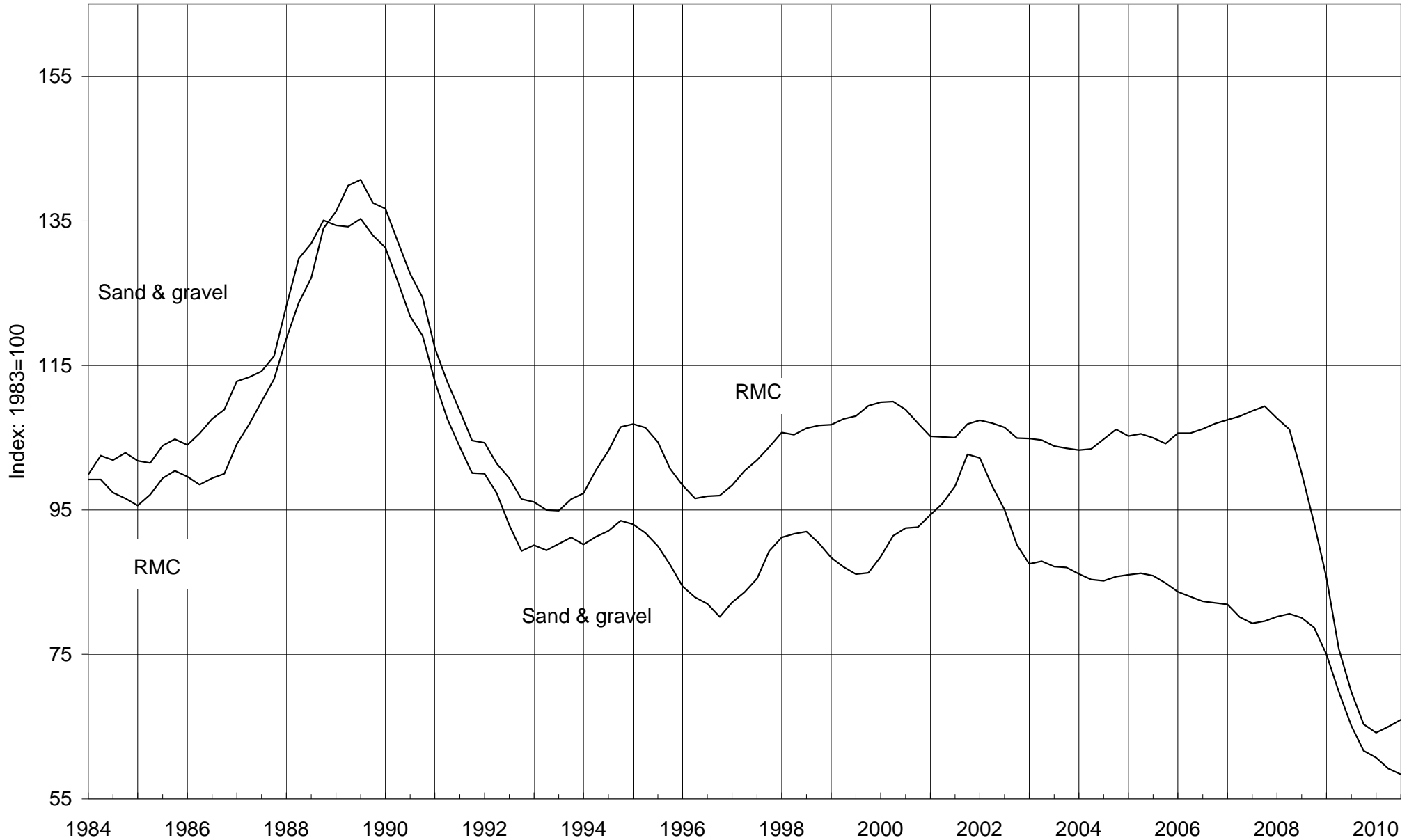
| | Production | | | Deliveries | | | Stocks (a) | | | Deliveries |
|----------|-------------|-----------|-------------------|-------------|-----------|-------------------|-------------|-----------|-------------------|-------------------|
| | Roofing (b) | Other (c) | Powder & Granules | Roofing (b) | Other (c) | Powder & Granules | Roofing (b) | Other (c) | Powder & Granules | Fill & Other Uses |
| 1999 | 28,265 | 18,733 | 51,872 | 33,569 | 13,740 | 52,648 | 10,049 | 6,829 | 3,135 | 190,581 |
| 2000 | 28,815 | 12,399 | 44,644 | 33,341 | 11,670 | 44,923 | 5,519 | 7,356 | 2,856 | 328,547 |
| 2001 | 30,770 | 14,834 | 47,521 | 33,052 | 13,586 | 47,588 | 3,159 | 8,465 | 2,799 | 383,353 |
| 2002 | 32,182 | 18,348 | 44,424 | 32,653 | 19,069 | 43,947 | 2,674 | 7,850 | 3,275 | 498,212 |
| 2003 | 34,471 | 15,623 | 29,003 | 34,700 | 14,576 | 29,240 | 2,477 | 8,849 | 3,416 | 669,818 |
| 2004 | .. | .. | .. | .. | .. | .. | .. | .. | .. | .. |
| 2005 | .. | .. | .. | .. | .. | .. | 2,824 | 10,281 | 5,347 | .. |
| 2006 (P) | .. | 61,612 | 22,967 | .. | 64,037 | 22,719 | .. | 6,454 | 4,274 | 860,395 |
| 2007 | .. | 65,260 | 19,141 | .. | 62,646 | 19,431 | 2,563 | 2,521 | 3,746 | .. |
| 2008 | .. | 59,644 | 16,915 | .. | 58,129 | 18,402 | .. | 2,749 | 2,253 | .. |
| 2009 | .. | 33,759 | 9,150 | 22,555 | 34,322 | 10,637 | 2,420 | 2,186 | 766 | 615,346 |
| 2010 | .. | 32,898 | .. | .. | 32,739 | .. | .. | 2,358 | .. | 586,123 |
| 2002 Q4 | 8,702 | 4,340 | 11,291 | 9,098 | 4,303 | 10,530 | 2,674 | 7,850 | 3,275 | 132,822 |
| 2003 Q1 | 8,436 | 3,492 | 8,077 | 7,545 | 3,108 | 7,887 | 3,570 | 8,188 | 3,417 | 177,974 |
| Q2 | 8,635 | 4,364 | 7,335 | 9,028 | 4,132 | 7,230 | 3,177 | 8,420 | 3,523 | 172,954 |
| Q3 | 8,195 | 4,120 | 6,685 | 8,679 | 4,196 | 7,333 | 2,693 | 8,344 | 2,875 | 151,403 |
| Q4 | 9,205 | 3,647 | 6,906 | 9,448 | 3,140 | 6,790 | 2,477 | 8,849 | 3,416 | 167,487 |
| 2004 Q1 | 9,397 | 4,432 | 7,288 | 8,379 | 4,619 | 7,460 | 3,469 | 8,777 | 3,242 | 158,552 |
| Q2 | 9,031 | 3,596 | 8,083 | 10,135 | 3,499 | 7,328 | 2,365 | 8,874 | 3,997 | 154,407 |
| Q3 | .. | 8,029 | 7,544 | .. | 8,578 | 7,049 | 3,954 | 8,225 | 4,592 | 158,333 |
| Q4 | .. | .. | .. | .. | .. | .. | .. | .. | .. | .. |
| 2005 Q1 | .. | .. | .. | .. | .. | .. | .. | .. | .. | .. |
| Q2 | .. | .. | .. | .. | .. | .. | .. | .. | .. | .. |
| Q3 | .. | .. | .. | .. | .. | .. | .. | .. | .. | .. |
| Q4 | .. | 13,635 | 7,448 | .. | 6,194 | 7,635 | 2,824 | 10,281 | 5,347 | 124,188 |
| 2006 Q1 | .. | 11,594 | 6,575 | .. | 12,879 | 6,406 | 3,170 | 8,967 | 5,440 | 195,762 |
| Q2 | .. | 14,804 | 5,051 | .. | 14,983 | 5,257 | 3,079 | 7,424 | 3,990 | 223,696 |
| Q3 | .. | 16,170 | 5,194 | .. | 16,803 | 5,094 | .. | 6,792 | 4,090 | 251,314 |
| Q4 (P) | .. | 19,044 | 6,147 | .. | 19,372 | 5,962 | .. | 6,454 | 4,274 | 189,623 |
| 2007 Q1 | .. | 17,787 | 5,571 | .. | 16,829 | 5,036 | 6,984 | 4,996 | 4,571 | 376,876 |
| Q2 | .. | 16,577 | 4,315 | .. | 14,765 | 4,875 | 3,066 | 5,850 | 4,011 | 346,426 |
| Q3 | .. | 16,017 | 4,672 | .. | 15,475 | 4,929 | 2,977 | 6,391 | 3,754 | .. |
| Q4 | .. | 14,879 | 4,583 | .. | 15,577 | 4,591 | 2,563 | 2,521 | 3,746 | 255,249 |
| 2008 Q1 | .. | 18,608 | 4,282 | .. | 18,071 | 4,414 | .. | 3,059 | 3,594 | 246,495 |
| Q2 | .. | 15,465 | 4,738 | .. | 14,457 | 4,862 | .. | 3,801 | 3,484 | .. |
| Q3 | .. | 13,811 | 3,843 | .. | 13,841 | 5,511 | 3,851 | 2,749 | 1,816 | .. |
| Q4 | .. | 11,760 | 4,052 | .. | 11,760 | 3,615 | .. | 2,749 | 2,253 | .. |
| 2009 Q1 | .. | 7,370 | 2,128 | 5,315 | 7,688 | 2,724 | .. | 2,431 | 1,658 | 148,722 |
| Q2 | 5,084 | 9,124 | 2,046 | 5,328 | 9,319 | 3,385 | 4,142 | 2,236 | 318 | 169,661 |
| Q3 | 5,503 | 8,263 | 2,046 | 6,534 | 8,267 | 2,163 | 3,111 | 2,232 | 201 | 154,862 |
| Q4 | 4,687 | 9,002 | 2,930 | 5,378 | 9,048 | 2,365 | 2,420 | 2,186 | 766 | 142,101 |
| 2010 Q1 | .. | 6,772 | .. | .. | 6,662 | .. | .. | 2,296 | .. | 88,805 |
| Q2 | .. | 6,744 | .. | .. | 6,701 | .. | 1,811 | 2,339 | 1,683 | 178,477 |
| Q3 | .. | 13,117 | .. | .. | 13,090 | .. | 1,059 | 2,365 | 1,281 | 156,976 |
| Q4 | 4,889 | 6,265 | .. | 4,904 | 6,286 | .. | .. | 2,358 | .. | 161,865 |

Note : From Q1 1995, the coverage of 'powder & granules' has been extended to include non-quarry manufacture; and 'crude blocks' are included in 'other' manufacture slate.

- (a) Refers to stocks at the end of the period.
- (b) Consists of all slate tiles which could be used as roofing tiles.
- (c) Consists of all slate products for cladding and decorative uses

Deliveries of Sand & Gravel and RMC

4-quarter moving average



The data is taken from Tables 4 & 13

Table 8 : Cement & Clinker - Production, Deliveries and Stocks

Great Britain

Thousand tonnes

| | | Cement | | | | | Clinker | | |
|------|-----|-------------------|-----------------------|--------------------------|----------|------------------------------|----------------|-------------------|--------|
| | | Production | Deliveries | Imports (into GB) | | Cementitious Material | | Production | |
| | | <i>of which</i> | <i>(into GB from</i> | by | by | other | total | | |
| | | Exports | <i>GB production)</i> | 'Manuf. | Others** | | | | |
| | | <i>(from GB)</i> | | | | | | | |
| 2004 | | 11,405 | 141 | 11,074 | 609 | 825 | 2,443 | 14,951 | 10,402 |
| 2005 | | 11,216 | 110 | 11,004 | 306 | 971 | 2,385 | 14,666 | 10,074 |
| 2006 | | 11,469 | 127 | 11,221 | 124 | 1,089 | 2,648 | 15,082 | 10,069 |
| 2007 | | 11,887 | 74 | 11,638 | 255 | 1,121 | 2,769 | 15,783 | 10,227 |
| 2008 | | 10,071 | 61 | 9,937 | 283 | 1,084 | 2,432 | 13,660 | 8,700 |
| 2009 | | 7,623 | 21 | 7,474 | 99 | 1,085 | 1,680 | 10,338 | 6,421 |
| 2004 | Q4 | 2,788 | 34 | 2,653 | 110 | 190 | 576 | 3,529 | 2,697 |
| 2005 | Q1 | 2,544 | 21 | 2,555 | 104 | 225 | 547 | 3,431 | 2,193 |
| | Q2 | 3,024 | 30 | 2,986 | 70 | 264 | 632 | 3,952 | 2,669 |
| | Q3 | 2,940 | 29 | 2,923 | 77 | 264 | 666 | 3,930 | 2,576 |
| | Q4 | 2,708 | 30 | 2,540 | 55 | 218 | 540 | 3,353 | 2,636 |
| 2006 | Q1 | 2,647 | 25 | 2,737 | 28 | 269 | 601 | 3,635 | 2,127 |
| | Q2 | 2,981 | 30 | 2,895 | 32 | 268 | 692 | 3,887 | 2,622 |
| | Q3 | 2,990 | 37 | 2,917 | 40 | 303 | 732 | 3,992 | 2,654 |
| | Q4 | 2,851 | 35 | 2,672 | 24 | 249 | 623 | 3,568 | 2,666 |
| 2007 | Q1 | 2,678 | 27 | 2,779 | 43 | 271 | 643 | 3,735 | 2,021 |
| | Q2 | 3,188 | 22 | 3,061 | 59 | 297 | 701 | 4,117 | 2,812 |
| | Q3 | 3,130 | 9 | 3,011 | 84 | 294 | 746 | 4,135 | 2,751 |
| | Q4 | 2,891 | 16 | 2,787 | 69 | 259 | 681 | 3,796 | 2,643 |
| 2008 | Q1 | 2,609 | 18 | 2,551 | 88 | 268 | 598 | 3,505 | 2,267 |
| | Q2 | 2,803 | 18 | 2,816 | 94 | 327 | 682 | 3,917 | 2,366 |
| | Q3 | 2,520 | 13 | 2,496 | 72 | 263 | 648 | 3,445 | 2,202 |
| | Q4 | 2,139 | 12 | 2,074 | 29 | 226 | 505 | 2,793 | 1,865 |
| 2009 | Q1 | 1,762 | 14 | 1,782 | 37 | 256 | 410 | 2,485 | 1,378 |
| | Q2 | 2,004 | 1 | 1,970 | 21 | 279 | 451 | 2,721 | 1,587 |
| | Q3 | 1,998 | 5 | 1,999 | 25 | 283 | 453 | 2,760 | 1,831 |
| | Q4 | 1,859 | 1 | 1,723 | 17 | 268 | 366 | 2,373 | 1,624 |
| 2010 | Q1 | 1,726 | 0 | 1,744 | 24 | 246 | 336 | 2,350 | 1,261 |
| | Q2 | 2,157 | 0 | 2,154 | 8 | 345 | 416 | 2,923 | 1,745 |
| | Q3 | 2,203 | 0 | 2,195 | 17 | 310 | 450 | 2,971 | 1,880 |
| 2009 | Nov | 667 | 1 | 605 | 4 | .. | .. | .. | 596 |
| | Dec | 433 | 0 | 422 | 4 | .. | .. | .. | 409 |
| 2010 | Jan | 400 | 0 | 397 | 8 | .. | .. | .. | 227 |
| | Feb | 601 | 0 | 595 | 8 | .. | .. | .. | 430 |
| | Mar | 725 | 0 | 752 | 8 | .. | .. | .. | 604 |
| | Apr | 675 | 0 | 684 | 0 | .. | .. | .. | 532 |
| | May | 732 | 0 | 703 | 4 | .. | .. | .. | 567 |
| | Jun | 750 | 0 | 767 | 4 | .. | .. | .. | 645 |
| | Jul | 804 | 0 | 766 | 9 | .. | .. | .. | 619 |
| | Aug | 688 | 0 | 688 | 4 | .. | .. | .. | 642 |
| | Sep | 711 | 0 | 741 | 4 | .. | .. | .. | 619 |
| | Oct | 741 | 0 | 702 | 4 | .. | .. | .. | 600 |
| | Nov | 687 | 0 | 662 | 4 | .. | .. | .. | 591 |

NB Where the coverage is for Great Britain, the figures for imports & exports are defined accordingly and have been estimated.

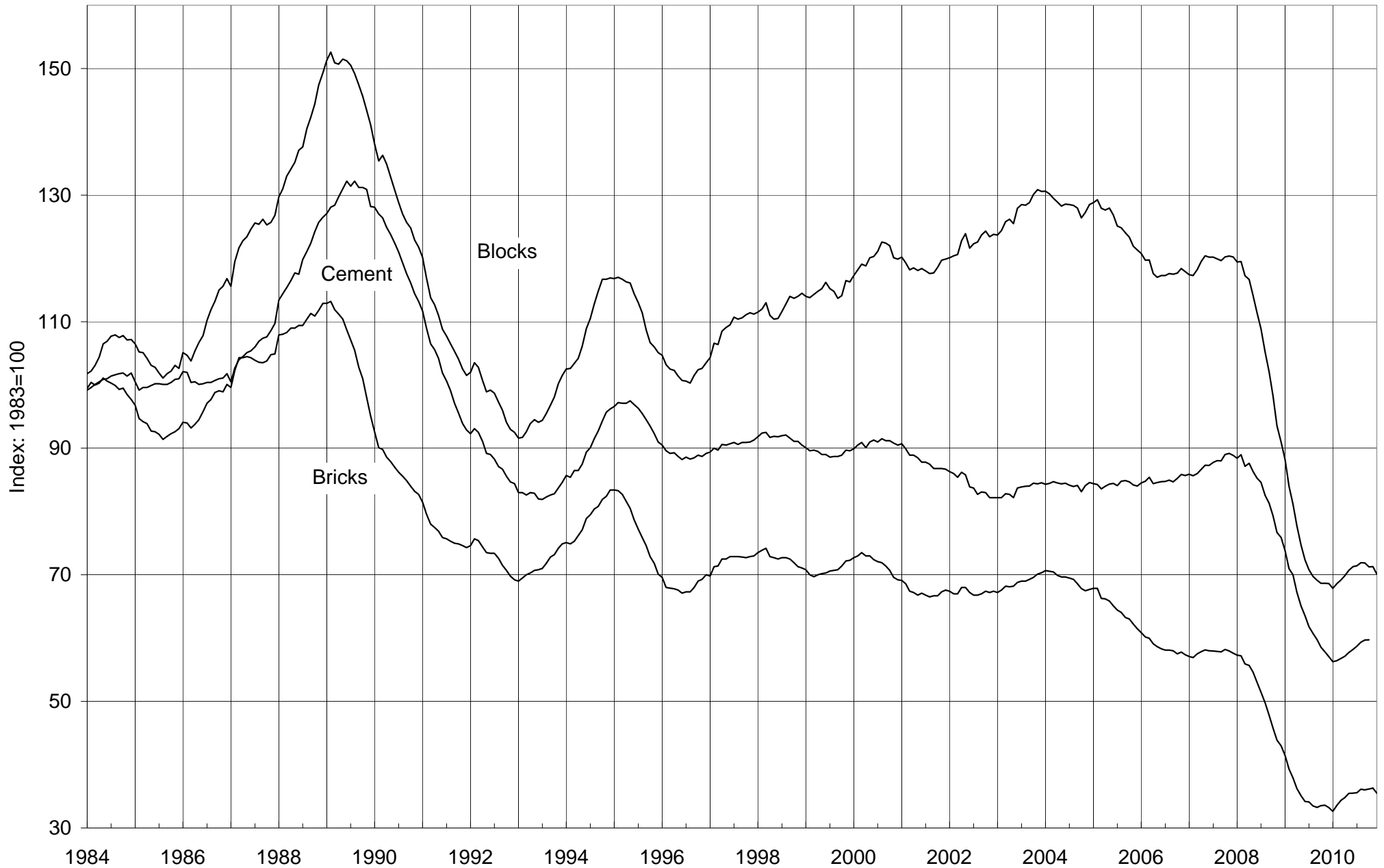
Cementitious material covers cement itself, pulverised fuel ash (pfa) to BS 3892 Part 1 and ground granulated blast-furnace slag (ggbs) to BS 6699

* Refers to stocks at end of period

** Estimated

Deliveries of Bricks, Blocks & Cement

12-month moving totals



The data is taken from tables 8, 9 and 11

Table 9 : Bricks - Production, Deliveries and Stocks

Great Britain

| | | Production | Deliveries (from) | Stocks* | Production | Deliveries (from) | Stocks* |
|--------------------------|-------------|----------------------|-----------------------------|----------------|-------------------|-----------------------------|----------------|
| (a) Brick Type | | <u>All Types</u> | | | <u>Commons</u> | | |
| 2006 | | 2,510 | 2,399 | 906 | 304 | 284 | 137 |
| 2007 | | 2,471 | 2,409 | 965 | 305 | 291 | 150 |
| 2008 | | 1,929 | 1,796 | 1,105 | 246 | 242 | 151 |
| 2009 | | 1,216 | 1,388 | 921 | 187 | 200 | 134 |
| 2010 | | 1,351 | 1,484 | 778 | 177 | 170 | 139 |
| 2009 | Q4 | 231 | 331 | 921 | 36 | 45 | 134 |
| 2010 | Q1 | 284 | 337 | 865 | 43 | 40 | 134 |
| | Q2 | 376 | 431 | 807 | 46 | 51 | 128 |
| | Q3 | 355 | 406 | 751 | 45 | 44 | 131 |
| | Q4 | 336 | 309 | 778 | 43 | 35 | 139 |
| 2010 | January | 62 | 58 | 923 | 11 | 8 | 135 |
| | February | 96 | 120 | 899 | 14 | 15 | 134 |
| | March | 126 | 159 | 865 | 17 | 17 | 134 |
| | April | 126 | 141 | 847 | 16 | 18 | 131 |
| | May | 136 | 152 | 831 | 17 | 19 | 129 |
| | June | 114 | 139 | 807 | 13 | 14 | 128 |
| | July | 120 | 144 | 781 | 17 | 16 | 130 |
| | August | 107 | 129 | 755 | 14 | 13 | 131 |
| | September | 128 | 133 | 751 | 14 | 15 | 131 |
| | October | 144 | 143 | 753 | 17 | 16 | 131 |
| | November | 118 | 117 | 754 | 15 | 12 | 134 |
| | December | 73 | 49 | 778 | 12 | 7 | 139 |
| 2011 | January (P) | 83 | 92 | 773 | 9 | 8 | 140 |
| (b) Material Type | | <u>All Materials</u> | | | <u>Clay#</u> | | |
| 2006 | | 2,510 | 2,399 | 906 | 2,359 | 2,254 | 887 |
| 2007 | | 2,471 | 2,409 | 965 | 2,312 | 2,249 | 947 |
| 2008 | | 1,929 | 1,796 | 1,105 | 1,814 | 1,676 | 1,093 |
| 2009 | | 1,216 | 1,388 | 921 | .. | .. | .. |
| 2010 | | 1,351 | 1,484 | 778 | .. | .. | .. |
| 2009 | Q4 | 231 | 331 | 921 | .. | .. | .. |
| 2010 | Q1 | 284 | 337 | 865 | .. | .. | .. |
| | Q2 | 376 | 431 | 807 | .. | .. | .. |
| | Q3 | 355 | 406 | 751 | .. | .. | .. |
| | Q4 | 336 | 309 | 778 | .. | .. | .. |
| 2010 | January | 62 | 58 | 923 | .. | .. | .. |
| | February | 96 | 120 | 899 | .. | .. | .. |
| | March | 126 | 159 | 865 | .. | .. | .. |
| | April | 126 | 141 | 847 | .. | .. | .. |
| | May | 136 | 152 | 831 | .. | .. | .. |
| | June | 114 | 139 | 807 | .. | .. | .. |
| | July | 120 | 144 | 781 | .. | .. | .. |
| | August | 107 | 129 | 755 | .. | .. | .. |
| | September | 128 | 133 | 751 | .. | .. | .. |
| | October | 144 | 143 | 753 | .. | .. | .. |
| | November | 118 | 117 | 754 | .. | .. | .. |
| | December | 73 | 49 | 778 | .. | .. | .. |
| 2011 | January (P) | 83 | 92 | 773 | .. | .. | .. |

* Refers to stocks at end of period

#Sand-lime bricks are included with clay bricks

Millions

| Production | Deliveries (from) | Stocks* | Production | Deliveries (from) | Stocks* | |
|------------|----------------------|---------|-------------|----------------------|---------|--------------------------|
| | | | | | | (a) Brick Type |
| Facings | | | Engineering | | | |
| 2,013 | 1,923 | 710 | 193 | 192 | 58 | 2006 |
| 1,950 | 1,906 | 753 | 216 | 212 | 62 | 2007 |
| 1,514 | 1,386 | 895 | 170 | 168 | 58 | 2008 |
| 927 | 1,079 | 735 | 103 | 109 | 52 | 2009 |
| 1,047 | 1,181 | 594 | 126 | 133 | 46 | 2010 |
| 176 | 264 | 735 | 19 | 22 | 52 | 2009 Q4 |
| 217 | 270 | 681 | 24 | 26 | 50 | 2010 Q1 |
| 297 | 343 | 633 | 33 | 38 | 45 | Q2 |
| 278 | 326 | 579 | 32 | 37 | 41 | Q3 |
| 255 | 241 | 594 | 37 | 32 | 46 | Q4 |
| 46 | 47 | 735 | 4 | 3 | 53 | 2010 January |
| 74 | 97 | 712 | 8 | 8 | 53 | February |
| 96 | 127 | 681 | 12 | 15 | 50 | March |
| 99 | 110 | 668 | 11 | 12 | 48 | April |
| 106 | 119 | 655 | 13 | 14 | 48 | May |
| 92 | 113 | 633 | 9 | 12 | 45 | June |
| 94 | 119 | 606 | 9 | 10 | 45 | July |
| 83 | 103 | 582 | 10 | 12 | 43 | August |
| 101 | 104 | 579 | 13 | 15 | 41 | September |
| 114 | 112 | 581 | 14 | 14 | 40 | October |
| 91 | 93 | 579 | 13 | 12 | 41 | November |
| 51 | 36 | 594 | 10 | 6 | 46 | December |
| 62 | 74 | 586 | 11 | 10 | 47 | 2011 January (P) |
| | | | | | | (b) Material Type |
| Sand-Lime# | | | Concrete | | | |
| .. | .. | .. | 150 | 146 | 19 | 2006 |
| .. | .. | .. | 159 | 160 | 18 | 2007 |
| .. | .. | .. | 115 | 120 | 11 | 2008 |
| .. | .. | .. | .. | .. | .. | 2009 |
| .. | .. | .. | .. | .. | .. | 2010 |
| .. | .. | .. | .. | .. | .. | 2009 Q4 |
| .. | .. | .. | .. | .. | .. | 2010 Q1 |
| .. | .. | .. | .. | .. | .. | Q2 |
| .. | .. | .. | .. | .. | .. | Q3 |
| .. | .. | .. | .. | .. | .. | Q4 |
| .. | .. | .. | .. | .. | .. | 2010 January |
| .. | .. | .. | .. | .. | .. | February |
| .. | .. | .. | .. | .. | .. | March |
| .. | .. | .. | .. | .. | .. | April |
| .. | .. | .. | .. | .. | .. | May |
| .. | .. | .. | .. | .. | .. | June |
| .. | .. | .. | .. | .. | .. | July |
| .. | .. | .. | .. | .. | .. | August |
| .. | .. | .. | .. | .. | .. | September |
| .. | .. | .. | .. | .. | .. | October |
| .. | .. | .. | .. | .. | .. | November |
| .. | .. | .. | .. | .. | .. | December |
| .. | .. | .. | .. | .. | .. | 2011 January (P) |

Table 10 : Brick Production, Deliveries and Stocks by English region, Wales and Scotland

| | North East | Yorks & Humber | North West | West Midlands | East Midlands | East of England |
|--------------------------|---------------|-------------------|---------------|------------------|------------------|--------------------|
| | | | | # | | # |
| (a) Commons | | | | | | |
| Production | | | | | | |
| 2010 | .. | .. | 9,499 | .. | 45,682 | .. |
| 2010 Q1 | .. | 780 | 2,025 | .. | 10,300 | .. |
| Q2 | .. | .. | 2,822 | .. | 11,346 | .. |
| Q3 | .. | 865 | 2,277 | .. | 10,871 | .. |
| Q4 | .. | 961 | 2,375 | .. | 13,165 | .. |
| 2010 December | .. | 190 | 647 | 1,092 | 3,102 | .. |
| Deliveries (from) | | | | | | |
| 2010 | .. | 4,301 | 9,071 | .. | 41,394 | .. |
| 2010 Q1 | .. | 990 | 1,922 | 1,769 | 8,426 | .. |
| Q2 | .. | 1,612 | 2,686 | .. | 11,820 | .. |
| Q3 | .. | 904 | 2,695 | .. | 11,078 | .. |
| Q4 | .. | 795 | 1,768 | .. | 10,070 | .. |
| 2010 December | .. | 68 | 265 | .. | 1,876 | .. |
| Stocks * | | | | | | |
| 2010 | 2,917 | 3,086 | 5,342 | 7,815 | 13,670 | .. |
| 2010 Q1 | 1,385 | 3,565 | 5,017 | 4,229 | 11,393 | .. |
| Q2 | 1,656 | 2,959 | 5,153 | 4,021 | 9,572 | .. |
| Q3 | 2,435 | 2,920 | 4,735 | 5,934 | 10,575 | .. |
| Q4 | 2,917 | 3,086 | 5,342 | 7,815 | 13,670 | .. |
| 2010 December | 2,917 | 3,086 | 5,342 | 7,815 | 13,670 | .. |
| (b) Facings | | | | | | |
| Production | | | | | | |
| 2010 | .. | 61,277 | .. | 288,995 | 240,113 | .. |
| 2010 Q1 | .. | 12,432 | .. | 56,743 | 48,562 | .. |
| Q2 | .. | 15,610 | 15,927 | 81,083 | 61,253 | .. |
| Q3 | .. | 17,000 | 15,242 | 81,073 | 65,405 | .. |
| Q4 | .. | 16,235 | 13,873 | 70,096 | 64,893 | .. |
| 2010 December | .. | 3,872 | 2,877 | 12,818 | 13,503 | .. |
| Deliveries (from) | | | | | | |
| 2010 | .. | 76,725 | 91,127 | 323,362 | .. | .. |
| 2010 Q1 | .. | 17,757 | 20,675 | 76,337 | .. | .. |
| Q2 | .. | 22,445 | 27,179 | 93,260 | 69,438 | .. |
| Q3 | .. | 21,820 | 24,831 | 89,225 | 67,269 | .. |
| Q4 | .. | 14,703 | 18,442 | 64,540 | 53,014 | .. |
| 2010 December | .. | 1,378 | 3,107 | 10,303 | 6,702 | .. |
| Stocks * | | | | | | |
| 2010 | 35,831 | 27,311 | 60,145 | 108,408 | .. | .. |
| 2010 Q1 | 45,577 | 37,434 | 85,555 | 127,076 | .. | .. |
| Q2 | .. | 30,599 | 74,303 | 114,899 | .. | .. |
| Q3 | 38,227 | 25,779 | 64,714 | 103,080 | 121,389 | .. |
| Q4 | 35,831 | 27,311 | 60,145 | 108,408 | .. | .. |
| 2010 December | 35,831 | 27,311 | 60,145 | 108,408 | .. | .. |
| (c) Engineering # | | | | | | |
| Production | | | | | | |
| 2010 | .. | .. | .. | 84,198 | 0 | .. |
| 2010 Q1 | .. | .. | .. | 16,442 | 0 | .. |
| Q2 | .. | .. | .. | 23,437 | 0 | .. |
| Q3 | .. | .. | .. | 21,843 | 0 | .. |
| Q4 | .. | .. | .. | 22,476 | 0 | .. |
| 2010 December | .. | .. | 2,248 | 5,301 | 0 | .. |
| Deliveries (from) | | | | | | |
| 2010 | .. | .. | .. | 84,889 | .. | .. |
| 2010 Q1 | .. | .. | .. | 16,208 | .. | .. |
| Q2 | .. | .. | .. | 24,585 | .. | .. |
| Q3 | .. | .. | .. | 22,975 | .. | .. |
| Q4 | .. | .. | .. | 21,121 | .. | .. |
| 2010 December | .. | 704 | 471 | 4,314 | .. | .. |
| Stocks * | | | | | | |
| 2010 | .. | .. | 3,674 | 10,898 | .. | .. |
| 2010 Q1 | .. | .. | .. | 11,875 | .. | .. |
| Q2 | .. | .. | .. | 10,727 | .. | .. |
| Q3 | .. | .. | 2,240 | 9,595 | .. | .. |
| Q4 | .. | .. | 3,674 | 10,898 | .. | .. |
| 2010 December | .. | .. | 3,674 | 10,898 | .. | .. |

Note : Regions now use Government Office boundaries

* Refers to stocks at end of period.

Thousands

| South East | South West | England | Wales | Scotland | Great Britain | |
|------------|------------|---------|-------|----------|---------------|--------------------------|
| # | # | | | | | |
| .. | .. | .. | .. | .. | 177,957 | (a) Commons |
| .. | .. | .. | .. | .. | 42,770 | Production |
| .. | .. | .. | .. | .. | 47,222 | 2010 |
| .. | .. | .. | .. | .. | 44,565 | 2010 Q1 |
| .. | .. | .. | .. | .. | 43,400 | Q2 |
| .. | .. | .. | .. | .. | 12,069 | Q3 |
| .. | 481 | .. | .. | .. | 12,069 | Q4 |
| .. | .. | .. | .. | .. | 170,894 | 2010 December |
| .. | .. | .. | .. | .. | 40,425 | Deliveries (from) |
| .. | .. | .. | .. | .. | 51,409 | 2010 |
| .. | .. | .. | .. | .. | 43,642 | 2010 Q1 |
| .. | .. | .. | .. | .. | 35,418 | Q2 |
| .. | .. | .. | .. | .. | 6,947 | Q3 |
| .. | .. | .. | .. | .. | 6,947 | Q4 |
| .. | .. | .. | .. | .. | 6,947 | 2010 December |
| .. | .. | .. | 2,297 | .. | 138,746 | Stocks * |
| .. | 1,914 | .. | .. | .. | 133,960 | 2010 |
| .. | 1,756 | .. | .. | .. | 128,631 | 2010 Q1 |
| .. | 1,735 | .. | 2,058 | .. | 130,764 | Q2 |
| .. | .. | .. | 2,297 | .. | 138,746 | Q3 |
| .. | .. | .. | 2,297 | .. | 138,746 | Q4 |
| .. | .. | .. | 2,297 | .. | 138,746 | 2010 December |
| .. | .. | .. | .. | .. | 1,046,108 | (b) Facings |
| .. | .. | .. | .. | .. | 216,933 | Production |
| 59,598 | .. | .. | .. | .. | 295,932 | 2010 |
| 52,650 | .. | .. | .. | .. | 277,870 | 2010 Q1 |
| 43,157 | .. | .. | .. | .. | 255,373 | Q2 |
| 5,858 | .. | .. | .. | .. | 50,754 | Q3 |
| .. | .. | .. | .. | .. | 50,754 | Q4 |
| .. | .. | .. | .. | .. | 50,754 | 2010 December |
| 221,673 | .. | .. | .. | .. | 1,181,101 | Deliveries (from) |
| 49,194 | .. | .. | .. | .. | 270,493 | 2010 |
| 63,645 | .. | .. | .. | .. | 343,478 | 2010 Q1 |
| 64,262 | .. | .. | .. | .. | 326,116 | Q2 |
| 44,572 | .. | .. | .. | .. | 241,014 | Q3 |
| 7,507 | .. | .. | .. | .. | 36,188 | Q4 |
| .. | .. | .. | .. | .. | 36,188 | 2010 December |
| .. | 21,802 | .. | .. | 4,818 | 593,575 | Stocks * |
| 93,325 | 24,136 | .. | .. | 2,838 | 680,879 | 2010 |
| 89,258 | 22,388 | .. | .. | 3,352 | 631,541 | 2010 Q1 |
| .. | 20,300 | .. | .. | 3,564 | 579,444 | Q2 |
| .. | 21,802 | .. | .. | 4,818 | 593,575 | Q3 |
| .. | 21,802 | .. | .. | 4,818 | 593,575 | Q4 |
| .. | 21,802 | .. | .. | 4,818 | 593,575 | 2010 December |
| .. | .. | .. | .. | .. | 126,458 | (c) Engineering # |
| .. | .. | .. | .. | 0 | 23,952 | Production |
| .. | .. | .. | .. | .. | 33,238 | 2010 |
| .. | .. | .. | 0 | .. | 32,265 | 2010 Q1 |
| .. | .. | .. | .. | .. | 37,003 | Q2 |
| .. | .. | .. | 0 | .. | 10,001 | Q3 |
| .. | .. | .. | .. | .. | 10,001 | Q4 |
| .. | .. | .. | .. | .. | 10,001 | 2010 December |
| .. | .. | .. | .. | .. | 132,883 | Deliveries (from) |
| .. | .. | .. | .. | .. | 26,369 | 2010 |
| .. | .. | .. | .. | .. | 37,620 | 2010 Q1 |
| .. | .. | .. | .. | .. | 36,644 | Q2 |
| .. | .. | .. | .. | .. | 32,250 | Q3 |
| .. | .. | .. | .. | .. | 5,687 | Q4 |
| .. | .. | .. | .. | .. | 5,687 | 2010 December |
| .. | .. | .. | .. | .. | 45,681 | Stocks * |
| .. | .. | .. | .. | .. | 49,740 | 2010 |
| .. | .. | .. | .. | .. | 45,359 | 2010 Q1 |
| .. | .. | .. | .. | .. | 40,980 | Q2 |
| .. | .. | .. | .. | .. | 45,681 | Q3 |
| .. | .. | .. | .. | .. | 45,681 | Q4 |
| .. | .. | .. | .. | .. | 45,681 | 2010 December |

Engineering bricks : South West are included with West Midlands and East of England are included with South East.

Table 10 (cont'd) : Brick Production, Deliveries and Stocks by English region, Wales and Scotland

| | North East | Yorks & Humber | North West | West Midlands | East Midlands | East of England |
|-----------------------|---------------|-------------------|---------------|------------------|------------------|--------------------|
| (d) All Bricks | | | | | | |
| Production | | | | | | |
| 2009 | .. | .. | .. | .. | .. | .. |
| 2010 | .. | .. | .. | .. | 285,795 | .. |
| 2009 Q4 | .. | .. | .. | .. | .. | .. |
| 2010 Q1 | .. | .. | .. | .. | 58,862 | .. |
| Q2 | .. | .. | .. | .. | 72,599 | .. |
| Q3 | .. | .. | .. | .. | 76,276 | .. |
| Q4 | .. | .. | .. | .. | 78,058 | .. |
| 2009 December | .. | .. | .. | .. | .. | .. |
| 2010 January | .. | .. | .. | 12,235 | 13,284 | .. |
| February | .. | .. | .. | 25,782 | 21,581 | .. |
| March | .. | .. | .. | .. | 23,997 | .. |
| April | .. | .. | .. | 37,037 | 23,763 | .. |
| May | .. | .. | .. | 38,411 | 26,008 | .. |
| June | .. | .. | .. | .. | 22,828 | .. |
| July | .. | .. | .. | .. | 24,195 | .. |
| August | .. | .. | .. | .. | 24,313 | .. |
| September | .. | .. | .. | .. | 27,768 | .. |
| October | .. | .. | .. | 42,149 | 34,206 | .. |
| November | .. | 7,982 | .. | .. | 27,247 | .. |
| December | .. | .. | 5,772 | 19,154 | 16,605 | .. |
| Deliveries (from) | | | | | | |
| 2009 | .. | .. | .. | .. | .. | .. |
| 2010 | .. | .. | .. | .. | .. | .. |
| 2009 Q4 | .. | .. | .. | .. | .. | .. |
| 2010 Q1 | .. | .. | .. | 93,972 | .. | .. |
| Q2 | .. | .. | .. | .. | .. | .. |
| Q3 | .. | .. | .. | .. | .. | .. |
| Q4 | .. | .. | .. | .. | .. | .. |
| 2009 December | .. | .. | .. | .. | .. | .. |
| 2010 January | .. | .. | .. | 15,413 | .. | .. |
| February | .. | .. | .. | 33,797 | .. | .. |
| March | .. | .. | .. | 44,762 | .. | .. |
| April | .. | .. | .. | .. | .. | .. |
| May | .. | .. | .. | 39,258 | .. | .. |
| June | .. | .. | .. | 42,626 | .. | .. |
| July | .. | .. | .. | 38,446 | .. | .. |
| August | .. | .. | .. | 36,852 | .. | .. |
| September | .. | .. | .. | .. | .. | .. |
| October | .. | .. | .. | 38,303 | .. | .. |
| November | .. | 7,899 | .. | 34,493 | .. | .. |
| December | .. | 2,150 | 3,843 | .. | .. | .. |
| Stocks * | | | | | | |
| 2009 | .. | .. | .. | 161,762 | .. | .. |
| 2010 | .. | .. | 69,161 | 126,855 | .. | .. |
| 2009 Q4 | .. | .. | .. | 161,762 | .. | .. |
| 2010 Q1 | .. | .. | .. | 143,038 | .. | .. |
| Q2 | .. | .. | .. | 129,421 | .. | .. |
| Q3 | .. | .. | 71,689 | 118,123 | .. | .. |
| Q4 | .. | .. | 69,161 | 126,855 | .. | .. |
| 2009 December | .. | .. | .. | 161,762 | .. | .. |
| 2010 January | .. | .. | .. | 158,584 | .. | .. |
| February | .. | .. | .. | 150,569 | .. | .. |
| March | .. | .. | .. | 143,038 | .. | .. |
| April | .. | .. | .. | 141,850 | .. | .. |
| May | .. | .. | .. | 141,003 | .. | .. |
| June | .. | .. | .. | 129,421 | .. | .. |
| July | .. | .. | .. | 124,971 | .. | .. |
| August | .. | .. | .. | 119,973 | .. | .. |
| September | .. | .. | 71,689 | 118,123 | .. | .. |
| October | .. | .. | .. | 121,917 | .. | .. |
| November | .. | .. | .. | 122,789 | .. | .. |
| December | .. | .. | 69,161 | 126,855 | .. | .. |

Note : Regions now use Government Office boundaries

* Refers to stocks at end of period.

| South East | South West | England | Wales | Scotland | Great Britain | |
|------------|------------|---------|-------|----------|---------------|-----------------------|
| | | | | | | (d) All Bricks |
| | | | | | | Production |
| .. | .. | .. | .. | .. | 1,216,471 | 2009 |
| .. | .. | .. | .. | .. | 1,350,523 | 2010 |
| .. | .. | .. | .. | .. | 231,397 | 2009 Q4 |
| .. | .. | .. | .. | .. | 283,655 | 2010 Q1 |
| .. | .. | .. | .. | .. | 376,392 | Q2 |
| .. | .. | .. | .. | .. | 354,700 | Q3 |
| .. | .. | .. | .. | .. | 335,776 | Q4 |
| .. | .. | .. | .. | .. | 40,403 | 2009 December |
| .. | .. | .. | .. | .. | 61,584 | 2010 January |
| .. | .. | .. | .. | .. | 96,210 | February |
| .. | .. | .. | .. | .. | 125,861 | March |
| .. | .. | .. | .. | .. | 126,417 | April |
| .. | .. | .. | .. | .. | 136,022 | May |
| .. | .. | .. | .. | .. | 113,953 | June |
| .. | .. | .. | .. | .. | 119,600 | July |
| .. | .. | .. | .. | .. | 106,618 | August |
| .. | .. | .. | .. | .. | 128,482 | September |
| .. | .. | .. | .. | .. | 144,482 | October |
| .. | .. | .. | .. | .. | 118,470 | November |
| .. | .. | .. | .. | .. | 72,824 | December |
| | | | | | | Deliveries (from) |
| .. | .. | .. | .. | .. | 1,388,003 | 2009 |
| .. | .. | .. | .. | .. | 1,484,878 | 2010 |
| .. | .. | .. | .. | .. | 331,347 | 2009 Q4 |
| .. | .. | .. | .. | .. | 337,287 | 2010 Q1 |
| .. | .. | .. | .. | .. | 432,507 | Q2 |
| .. | .. | .. | .. | .. | 406,402 | Q3 |
| .. | .. | .. | .. | .. | 308,682 | Q4 |
| .. | .. | .. | .. | .. | 82,926 | 2009 December |
| .. | .. | .. | .. | .. | 57,792 | 2010 January |
| .. | .. | .. | .. | .. | 120,214 | February |
| .. | .. | .. | .. | .. | 159,281 | March |
| .. | .. | .. | .. | .. | 140,693 | April |
| .. | .. | .. | .. | .. | 152,089 | May |
| .. | .. | .. | .. | .. | 139,725 | June |
| .. | .. | .. | .. | .. | 144,261 | July |
| .. | .. | .. | .. | .. | 128,711 | August |
| .. | .. | .. | .. | .. | 133,430 | September |
| .. | .. | .. | .. | .. | 142,549 | October |
| .. | .. | .. | .. | .. | 117,311 | November |
| .. | .. | .. | .. | .. | 48,822 | December |
| | | | | | | Stocks * |
| .. | .. | .. | .. | .. | 921,354 | 2009 |
| .. | .. | .. | .. | .. | 778,002 | 2010 |
| .. | .. | .. | .. | .. | 921,354 | 2009 Q4 |
| .. | .. | .. | .. | .. | 864,579 | 2010 Q1 |
| .. | .. | .. | .. | .. | 805,531 | Q2 |
| .. | .. | .. | .. | .. | 751,188 | Q3 |
| .. | .. | .. | .. | .. | 778,002 | Q4 |
| .. | .. | .. | .. | .. | 921,354 | 2009 December |
| .. | .. | .. | .. | .. | 922,629 | 2010 January |
| .. | .. | .. | .. | .. | 898,591 | February |
| .. | .. | .. | .. | .. | 864,579 | March |
| .. | .. | .. | .. | .. | 847,412 | April |
| .. | .. | .. | .. | .. | 831,323 | May |
| .. | .. | .. | .. | .. | 805,531 | June |
| .. | .. | .. | .. | .. | 780,870 | July |
| .. | .. | .. | .. | .. | 754,926 | August |
| .. | .. | .. | .. | .. | 751,188 | September |
| .. | .. | .. | .. | .. | 753,069 | October |
| .. | .. | .. | .. | .. | 754,000 | November |
| .. | .. | .. | .. | .. | 778,002 | December |

CONCRETE PRODUCTS

Table 11 : Concrete Blocks - Production, Deliveries and Stocks

Great Britain

| | All Types | | | Dense | | |
|------------------|------------|----------------------|---------|------------|----------------------|---------|
| | Production | Deliveries (from) | Stocks* | Production | Deliveries (from) | Stocks* |
| 2000 | 90,219 | 88,529 | 9,594 | 37,629 | 37,013 | 4,368 |
| 2001 | 87,922 | 88,509 | 8,842 | 36,598 | 36,518 | 4,258 |
| 2002 | 91,474 | 91,342 | 9,014 | 35,744 | 36,019 | 3,963 |
| 2003 | 95,675 | 96,383 | 8,513 | 36,775 | 37,175 | 3,684 |
| 2004 | 96,256 | 94,854 | 10,088 | 37,677 | 37,444 | 3,690 |
| 2005 | 89,997 | 89,551 | 9,680 | 36,188 | 36,473 | 3,465 |
| 2006 | 87,510 | 87,015 | .. | 34,956 | 34,741 | .. |
| 2007 | 89,951 | 88,746 | .. | 36,686 | 35,396 | .. |
| 2008 | 67,743 | 67,136 | 8,920 | 29,675 | 29,889 | 3,498 |
| 2009 | 50,394 | 50,639 | 8,320 | 22,607 | 22,748 | 3,291 |
| 2010 | 53,629 | 51,758 | 10,152 | 22,393 | 21,731 | 3,833 |
| 2005 Q4 | 20,186 | 19,720 | 9,680 | 7,985 | 8,008 | 3,465 |
| 2006 Q1 | 21,155 | 20,820 | .. | 8,536 | 8,160 | .. |
| Q2 | 22,435 | 22,560 | .. | 8,903 | 8,903 | .. |
| Q3 | 22,615 | 23,611 | .. | 9,384 | 9,599 | .. |
| Q4 | 21,305 | 20,023 | .. | 8,133 | 8,079 | .. |
| 2007 Q1 | 22,014 | 21,057 | .. | 8,714 | 8,141 | .. |
| Q2 | 22,532 | 24,033 | .. | 9,268 | 9,531 | .. |
| Q3 | 23,248 | 23,184 | .. | 9,727 | 9,283 | .. |
| Q4 | 22,157 | 20,472 | .. | 8,978 | 8,442 | .. |
| 2008 Q1 | 21,131 | 18,855 | 11,749 | 8,564 | 7,853 | 5,075 |
| Q2 | 20,231 | 19,714 | 11,977 | 8,767 | 8,677 | 5,107 |
| Q3 | 14,894 | 16,309 | 10,224 | 7,131 | 7,576 | 4,479 |
| Q4 | 11,487 | 12,259 | 8,920 | 5,214 | 5,783 | 3,498 |
| 2009 Q1 | 12,094 | 11,649 | 9,161 | 5,635 | 5,438 | 3,628 |
| Q2 | 13,463 | 13,191 | 9,455 | 6,192 | 6,032 | 3,821 |
| Q3 | 12,771 | 13,924 | 8,203 | 5,811 | 6,255 | 3,390 |
| Q4 | 12,066 | 11,874 | 8,320 | 4,969 | 5,023 | 3,291 |
| 2010 Q1 | 12,614 | 12,072 | 8,740 | 5,033 | 4,896 | 3,333 |
| Q2 | 14,956 | 14,753 | 8,990 | 6,343 | 6,176 | 3,513 |
| Q3 | 15,172 | 14,343 | 9,832 | 6,477 | 6,125 | 3,837 |
| Q4 | 10,887 | 10,590 | 10,152 | 4,541 | 4,534 | 3,833 |
| 2009 January | 3,750 | 3,561 | .. | 1,835 | 1,637 | .. |
| February | 3,802 | 3,540 | .. | 1,745 | 1,687 | .. |
| March | 4,543 | 4,548 | 9,161 | 2,055 | 2,114 | 3,628 |
| April | 4,580 | 4,447 | .. | 2,077 | 2,028 | .. |
| May | 4,158 | 4,144 | .. | 1,911 | 1,884 | .. |
| June | 4,725 | 4,600 | 9,455 | 2,203 | 2,119 | 3,821 |
| July | 4,740 | 4,863 | .. | 2,111 | 2,172 | .. |
| August | 3,417 | 4,264 | .. | 1,642 | 1,933 | .. |
| September | 4,614 | 4,797 | 8,203 | 2,058 | 2,151 | 3,390 |
| October | 4,740 | 4,818 | .. | 1,930 | 2,006 | .. |
| November | 4,372 | 4,072 | .. | 1,782 | 1,720 | .. |
| December | 2,954 | 2,984 | 8,320 | 1,258 | 1,297 | 3,291 |
| 2010 January | 3,342 | 3,003 | .. | 1,225 | 1,186 | .. |
| February | 4,341 | 4,100 | .. | 1,744 | 1,672 | .. |
| March | 4,931 | 4,969 | 8,740 | 2,063 | 2,039 | 3,333 |
| April | 4,814 | 4,948 | .. | 1,975 | 1,970 | .. |
| May | 4,790 | 4,765 | .. | 1,974 | 1,969 | .. |
| June | 5,353 | 5,040 | 8,990 | 2,394 | 2,237 | 3,513 |
| July | 5,266 | 4,970 | .. | 2,248 | 2,169 | .. |
| August | 4,711 | 4,614 | .. | 2,158 | 1,962 | .. |
| September | 5,195 | 4,759 | 9,832 | 2,070 | 1,993 | 3,837 |
| October | 4,295 | 4,372 | .. | 1,739 | 1,824 | .. |
| November | 3,999 | 4,092 | .. | 1,595 | 1,710 | .. |
| December | 2,593 | 2,126 | 10,152 | 1,207 | 1,001 | 3,833 |
| 2011 January (P) | 3,871 | 3,572 | .. | 1,609 | 1,529 | .. |

* Refers to stocks at end of period

CONCRETE PRODUCTS

Thousand square metres

| Lightweight | | | Aerated | | | |
|-------------|----------------------|---------|------------|----------------------|---------|------------------|
| Production | Deliveries (from) | Stocks* | Production | Deliveries (from) | Stocks* | |
| 22,991 | 22,638 | 2,169 | 29,599 | 28,878 | 3,058 | 2000 |
| 22,684 | 22,670 | 2,207 | 28,639 | 29,320 | 2,377 | 2001 |
| 23,478 | 23,537 | 2,188 | 32,252 | 31,786 | 2,863 | 2002 |
| 24,991 | 25,161 | 2,107 | 33,909 | 34,047 | 2,721 | 2003 |
| 25,462 | 25,736 | 2,271 | 33,117 | 31,674 | 4,127 | 2004 |
| 25,561 | 25,673 | 2,173 | 28,248 | 27,405 | 4,042 | 2005 |
| 25,345 | 25,222 | .. | 27,209 | 27,051 | .. | 2006 |
| 25,965 | 25,667 | .. | 27,300 | 27,682 | .. | 2007 |
| 18,168 | 18,363 | 2,149 | 19,900 | 18,884 | 3,273 | 2008 |
| 13,421 | 13,989 | 1,522 | 14,367 | 13,903 | 3,507 | 2009 |
| 14,415 | 13,923 | 2,044 | 16,822 | 16,104 | 4,276 | 2010 |
| 5,859 | 5,693 | 2,173 | 6,342 | 6,019 | 4,042 | 2005 Q4 |
| 6,262 | 6,179 | .. | 6,357 | 6,481 | .. | 2006 Q1 |
| 6,125 | 6,342 | .. | 7,406 | 7,315 | .. | Q2 |
| 6,699 | 6,781 | .. | 6,532 | 7,231 | .. | Q3 |
| 6,258 | 5,920 | .. | 6,914 | 6,024 | .. | Q4 |
| 6,418 | 6,437 | .. | 6,883 | 6,479 | .. | 2007 Q1 |
| 6,572 | 6,867 | .. | 6,692 | 7,636 | .. | Q2 |
| 6,757 | 6,616 | .. | 6,764 | 7,286 | .. | Q3 |
| 6,217 | 5,748 | .. | 6,962 | 6,282 | .. | Q4 |
| 5,580 | 5,389 | 2,633 | 6,988 | 5,612 | 4,041 | 2008 Q1 |
| 5,421 | 5,405 | 2,549 | 6,043 | 5,632 | 4,321 | Q2 |
| 4,110 | 4,309 | 2,338 | 3,653 | 4,424 | 3,406 | Q3 |
| 3,057 | 3,260 | 2,149 | 3,216 | 3,216 | 3,273 | Q4 |
| 3,213 | 3,258 | 2,181 | 3,247 | 2,953 | 3,352 | 2009 Q1 |
| 3,498 | 3,553 | 2,125 | 3,773 | 3,607 | 3,510 | Q2 |
| 3,293 | 3,765 | 1,544 | 3,667 | 3,903 | 3,269 | Q3 |
| 3,416 | 3,412 | 1,522 | 3,681 | 3,439 | 3,507 | Q4 |
| 3,344 | 3,252 | 1,601 | 4,238 | 3,924 | 3,806 | 2010 Q1 |
| 4,031 | 3,950 | 1,692 | 4,582 | 4,627 | 3,785 | Q2 |
| 4,208 | 3,899 | 2,023 | 4,487 | 4,319 | 3,971 | Q3 |
| 2,832 | 2,822 | 2,044 | 3,515 | 3,234 | 4,276 | Q4 |
| 890 | 998 | .. | 1,025 | 927 | .. | 2009 January |
| 954 | 967 | .. | 1,103 | 887 | .. | February |
| 1,369 | 1,293 | 2,181 | 1,118 | 1,140 | 3,352 | March |
| 1,186 | 1,198 | .. | 1,318 | 1,221 | .. | April |
| 1,091 | 1,124 | .. | 1,155 | 1,136 | .. | May |
| 1,221 | 1,231 | 2,125 | 1,301 | 1,250 | 3,510 | June |
| 1,171 | 1,275 | .. | 1,458 | 1,416 | .. | July |
| 895 | 1,152 | .. | 881 | 1,180 | .. | August |
| 1,227 | 1,339 | 1,544 | 1,328 | 1,308 | 3,269 | September |
| 1,379 | 1,411 | .. | 1,431 | 1,401 | .. | October |
| 1,300 | 1,173 | .. | 1,290 | 1,178 | .. | November |
| 737 | 828 | 1,522 | 959 | 859 | 3,507 | December |
| 712 | 760 | .. | 1,406 | 1,057 | .. | 2010 January |
| 1,302 | 1,134 | .. | 1,294 | 1,294 | .. | February |
| 1,330 | 1,357 | 1,601 | 1,538 | 1,573 | 3,806 | March |
| 1,298 | 1,288 | .. | 1,541 | 1,689 | .. | April |
| 1,305 | 1,264 | .. | 1,511 | 1,532 | .. | May |
| 1,428 | 1,398 | 1,692 | 1,530 | 1,405 | 3,785 | June |
| 1,474 | 1,354 | .. | 1,543 | 1,447 | .. | July |
| 1,286 | 1,289 | .. | 1,267 | 1,363 | .. | August |
| 1,447 | 1,256 | 2,023 | 1,677 | 1,510 | 3,971 | September |
| 1,211 | 1,201 | .. | 1,345 | 1,347 | .. | October |
| 1,068 | 1,122 | .. | 1,336 | 1,260 | .. | November |
| 553 | 498 | 2,044 | 834 | 627 | 4,276 | December |
| 934 | 1,012 | .. | 1,328 | 1,031 | .. | 2011 January (P) |

CONCRETE PRODUCTS

Table 12 : Concrete Blocks : Production, Deliveries and Stocks by English Region, Wales and Scotland

| | North East | Yorks & Humber | North West | West Midlands | East Midlands | East of England |
|----------------------------|---------------|-------------------|---------------|------------------|------------------|--------------------|
| (a) Dense aggregate | | | | | | |
| Production | | | | | | |
| 2010 | 418 | .. | 2,778 | .. | .. | .. |
| 2009 Q4 | 97 | .. | 655 | .. | .. | .. |
| 2010 Q1 | 68 | .. | 657 | .. | .. | .. |
| Q2 | 114 | .. | 742 | .. | .. | .. |
| Q3 | 155 | .. | 826 | .. | .. | .. |
| Q4 | 81 | .. | 553 | .. | .. | .. |
| Deliveries (from) | | | | | | |
| 2010 | 397 | .. | 2,799 | .. | .. | .. |
| 2009 Q4 | 75 | .. | 623 | .. | .. | .. |
| 2010 Q1 | 72 | .. | 633 | .. | .. | .. |
| Q2 | 117 | .. | 761 | .. | .. | .. |
| Q3 | 135 | .. | 831 | .. | .. | .. |
| Q4 | 73 | .. | 575 | .. | .. | .. |
| Stocks * | | | | | | |
| 2010 | 85 | 332 | 265 | .. | .. | .. |
| 2009 Q4 | 64 | 307 | 304 | .. | .. | .. |
| 2010 Q1 | 60 | 399 | 320 | .. | .. | .. |
| Q2 | 57 | 363 | 300 | .. | .. | .. |
| Q3 | 76 | 372 | 287 | .. | .. | .. |
| Q4 | 85 | 332 | 265 | .. | .. | .. |
| (b) Other (1) | | | | | | |
| Production | | | | | | |
| 2010 | 1,188 | .. | 2,016 | .. | .. | .. |
| 2009 Q4 | 269 | .. | 337 | .. | .. | .. |
| 2010 Q1 | 259 | .. | 414 | .. | .. | .. |
| Q2 | 372 | .. | 579 | .. | .. | .. |
| Q3 | 333 | .. | 591 | .. | .. | .. |
| Q4 | 225 | .. | 432 | .. | .. | .. |
| Deliveries (from) | | | | | | |
| 2010 | 1,202 | .. | 2,060 | .. | .. | .. |
| 2009 Q4 | 259 | .. | 365 | .. | .. | .. |
| 2010 Q1 | 255 | .. | 448 | .. | .. | .. |
| Q2 | 356 | .. | 591 | .. | .. | .. |
| Q3 | 363 | .. | 596 | .. | .. | .. |
| Q4 | 227 | .. | 426 | .. | .. | .. |
| Stocks * | | | | | | |
| 2010 | 120 | 1,099 | 164 | .. | .. | .. |
| 2009 Q4 | 125 | 937 | 176 | .. | .. | .. |
| 2010 Q1 | 137 | 1,042 | 154 | .. | .. | .. |
| Q2 | 153 | 954 | 144 | .. | .. | .. |
| Q3 | 123 | 1,128 | 158 | .. | .. | .. |
| Q4 | 120 | 1,099 | 164 | .. | .. | .. |
| (c) Total | | | | | | |
| Production | | | | | | |
| 2010 | 1,607 | 10,353 | 4,794 | 3,534 | 6,301 | 6,048 |
| 2009 Q4 | 366 | 2,172 | 992 | 746 | 1,718 | 1,297 |
| 2010 Q1 | 327 | 2,451 | 1,071 | 852 | 1,637 | 1,531 |
| Q2 | 486 | 2,880 | 1,321 | 940 | 1,720 | 1,721 |
| Q3 | 487 | 3,055 | 1,417 | 1,014 | 1,734 | 1,646 |
| Q4 | 306 | 1,968 | 985 | 728 | 1,210 | 1,150 |
| Deliveries (from) | | | | | | |
| 2010 | 1,598 | 10,166 | 4,860 | 3,736 | 5,974 | 6,144 |
| 2009 Q4 | 334 | 2,152 | 988 | 785 | 1,720 | 1,303 |
| 2010 Q1 | 327 | 2,253 | 1,081 | 806 | 1,468 | 1,538 |
| Q2 | 473 | 3,003 | 1,352 | 1,119 | 1,690 | 1,746 |
| Q3 | 499 | 2,873 | 1,426 | 1,064 | 1,631 | 1,644 |
| Q4 | 300 | 2,037 | 1,001 | 747 | 1,186 | 1,216 |
| Stocks * | | | | | | |
| 2010 | 205 | 1,431 | 430 | 677 | 1,092 | 582 |
| 2009 Q4 | 189 | 1,244 | 480 | 880 | 797 | 627 |
| 2010 Q1 | 197 | 1,441 | 474 | 925 | 934 | 604 |
| Q2 | 210 | 1,317 | 444 | 746 | 964 | 602 |
| Q3 | 199 | 1,499 | 445 | 696 | 1,068 | 623 |
| Q4 | 205 | 1,431 | 430 | 677 | 1,092 | 582 |

Note : Regions refer to Government Office Regions

* Refers to stocks at end of period.

CONCRETE PRODUCTS

Thousand square metres

| South East | South West | England | Wales | Scotland | Great Britain | |
|------------|------------|---------|-------|----------|---------------|----------------------------|
| | | | | | | (a) Dense aggregate |
| | | | | | | Production |
| .. | 5,813 | .. | 2,918 | .. | 22,387 | 2010 |
| .. | 1,178 | 4,003 | 602 | 364 | 4,969 | 2009 Q4 |
| 408 | 1,213 | .. | 621 | .. | 5,027 | 2010 Q1 |
| .. | 1,681 | .. | 805 | .. | 6,342 | Q2 |
| 409 | 1,699 | .. | 783 | .. | 6,477 | Q3 |
| .. | 1,221 | .. | 709 | .. | 4,541 | Q4 |
| | | | | | | Deliveries (from) |
| .. | 5,548 | .. | 2,667 | .. | 21,731 | 2010 |
| .. | 1,121 | 3,937 | 626 | 460 | 5,023 | 2009 Q4 |
| 375 | 1,214 | 3,870 | 642 | 384 | 4,896 | 2010 Q1 |
| .. | 1,564 | 4,886 | 745 | 545 | 6,176 | Q2 |
| 406 | 1,556 | 4,924 | 711 | 489 | 6,125 | Q3 |
| .. | 1,215 | .. | 568 | .. | 4,534 | Q4 |
| | | | | | | Stocks * |
| .. | 1,100 | .. | .. | 211 | 3,833 | 2010 |
| .. | 942 | 2,487 | 530 | 274 | 3,291 | 2009 Q4 |
| 209 | 860 | 2,587 | 502 | 244 | 3,333 | 2010 Q1 |
| .. | 982 | 2,646 | 557 | 310 | 3,513 | Q2 |
| .. | 1,105 | 2,887 | 629 | 321 | 3,837 | Q3 |
| .. | 1,100 | .. | .. | 211 | 3,833 | Q4 |
| | | | | | | (b) Other (1) |
| | | | | | | Production |
| .. | 992 | .. | 567 | .. | 31,242 | 2010 |
| .. | 228 | 7,024 | 50 | 23 | 7,097 | 2009 Q4 |
| 1,858 | 217 | .. | 64 | .. | 7,587 | 2010 Q1 |
| .. | 279 | .. | 148 | .. | 8,613 | Q2 |
| 1,940 | 299 | .. | 177 | .. | 8,695 | Q3 |
| .. | 197 | .. | 178 | .. | 6,347 | Q4 |
| | | | | | | Deliveries (from) |
| .. | 994 | .. | 374 | .. | 30,028 | 2010 |
| .. | 207 | 6,753 | 51 | 47 | 6,851 | 2009 Q4 |
| 1,671 | 229 | 7,092 | 67 | 17 | 7,176 | 2010 Q1 |
| .. | 285 | 8,450 | 103 | 24 | 8,577 | Q2 |
| 1,633 | 276 | 8,083 | 117 | 20 | 8,219 | Q3 |
| .. | 204 | .. | 87 | .. | 6,056 | Q4 |
| | | | | | | Stocks * |
| .. | 138 | .. | .. | 33 | 6,320 | 2010 |
| .. | 124 | 4,935 | 55 | 39 | 5,029 | 2009 Q4 |
| 2,150 | 105 | 5,312 | 53 | 42 | 5,407 | 2010 Q1 |
| .. | 109 | 5,338 | 98 | 42 | 5,477 | Q2 |
| .. | 134 | 5,801 | 158 | 35 | 5,994 | Q3 |
| .. | 138 | .. | .. | 33 | 6,320 | Q4 |
| | | | | | | (c) Total |
| | | | | | | Production |
| 8,959 | 6,805 | 48,402 | 3,485 | 1,742 | 53,629 | 2010 |
| 2,330 | 1,406 | 11,027 | 652 | 387 | 12,066 | 2009 Q4 |
| 2,266 | 1,430 | 11,565 | 685 | 364 | 12,614 | 2010 Q1 |
| 2,353 | 1,960 | 13,381 | 953 | 622 | 14,956 | Q2 |
| 2,349 | 1,998 | 13,699 | 960 | 512 | 15,172 | Q3 |
| 1,991 | 1,418 | 9,756 | 887 | 244 | 10,887 | Q4 |
| | | | | | | Deliveries (from) |
| 7,864 | 6,543 | 46,884 | 3,040 | 1,834 | 51,759 | 2010 |
| 2,080 | 1,328 | 10,690 | 677 | 507 | 11,874 | 2009 Q4 |
| 2,046 | 1,443 | 10,962 | 709 | 401 | 12,072 | 2010 Q1 |
| 2,104 | 1,849 | 13,336 | 848 | 569 | 14,754 | Q2 |
| 2,039 | 1,832 | 13,007 | 828 | 509 | 14,343 | Q3 |
| 1,675 | 1,419 | 9,579 | 656 | 355 | 10,590 | Q4 |
| | | | | | | Stocks * |
| 3,235 | 1,238 | 8,890 | 1,019 | 244 | 10,152 | 2010 |
| 2,139 | 1,066 | 7,422 | 585 | 313 | 8,320 | 2009 Q4 |
| 2,359 | 965 | 7,899 | 555 | 286 | 8,740 | 2010 Q1 |
| 2,609 | 1,091 | 7,984 | 655 | 352 | 8,991 | Q2 |
| 2,919 | 1,239 | 8,689 | 788 | 355 | 9,832 | Q3 |
| 3,235 | 1,238 | 8,890 | 1,019 | 244 | 10,152 | Q4 |

(1) Lightweight aggregate including aerated concrete blocks where appropriate.

OTHER BUILDING MATERIALS

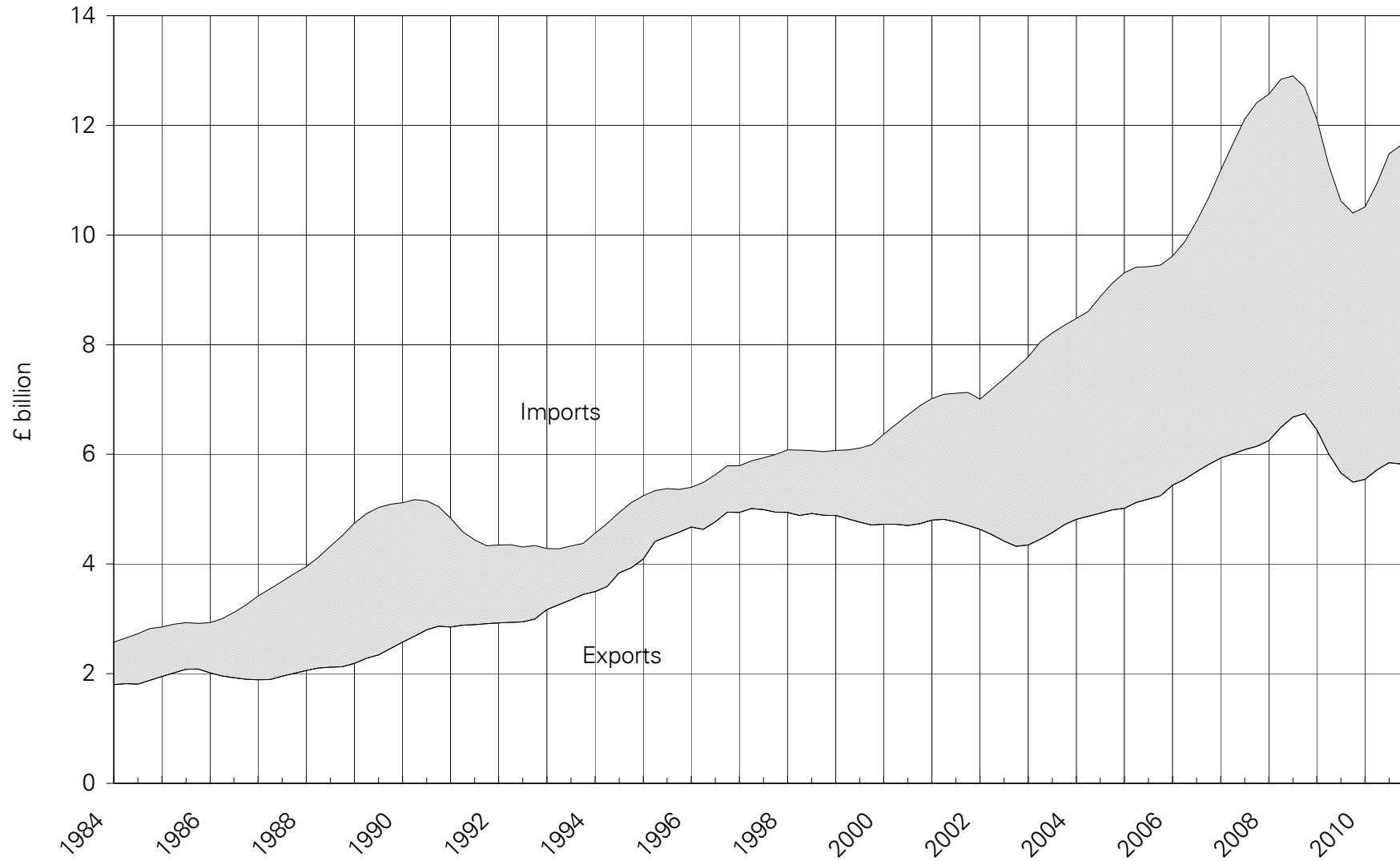
Table 13 : Other Building Materials

| | | Great Britain | | | United Kingdom |
|------|----|--|------------|----------|---|
| | | Concrete Roofing Tiles (Th.sq.m. of roof area covered) | | | Ready-Mixed Concrete (Th.cu.m.) |
| | | Production | Deliveries | Stocks * | Deliveries |
| 2000 | | 26,765 | 25,047 | 4,552 | 23,043 |
| 2001 | | 24,825 | 24,430 | 4,947 | 23,008 |
| 2002 | | 25,023 | 24,390 | 4,586 | 22,597 |
| 2003 | | 21,437 | 21,401 | 2,982 | 22,289 |
| 2004 | | 20,739 | 19,403 | 2,850 | 22,856 |
| 2005 | | 25,719 | 24,489 | 4,902 | 22,432 |
| 2006 | | 23,730 | 24,118 | 4,426 | 23,029 |
| 2007 | | 23,551 | 23,812 | 3,646 | 23,548 |
| 2008 | | 20,084 | 19,926 | 3,899 | 20,051 |
| 2009 | | 14,079 | 15,612 | 2,344 | 14,069 |
| 2010 | | 17,817 | 17,146 | 3,023 | 14,038 (R) |
| 2001 | Q4 | 5,725 | 5,803 | 4,947 | 5,647 |
| 2002 | Q1 | 6,757 | 5,801 | 5,332 | 5,404 |
| | Q2 | 6,097 | 6,474 | 4,954 | 5,934 |
| | Q3 | 5,918 | 6,848 | 3,654 | 5,929 |
| | Q4 | 6,251 | 5,267 | 4,586 | 5,330 |
| 2003 | Q1 | 5,821 | 5,798 | 4,484 | 5,388 |
| | Q2 | 6,280 | 6,364 | 4,480 | 5,892 |
| | Q3 | 3,917 | 4,455 | 2,362 | 5,750 |
| | Q4 | 5,418 | 4,785 | 2,982 | 5,259 |
| 2004 | Q1 | 5,498 | 4,294 | 3,787 | 5,334 |
| | Q2 | 5,266 | 4,800 | 3,728 | 5,931 |
| | Q3 | 4,920 | 5,134 | 3,048 | 6,038 |
| | Q4 | 5,055 | 5,175 | 2,850 | 5,553 |
| 2005 | Q1 | 5,787 | 4,779 | 3,732 | 5,137 |
| | Q2 | 7,502 | 6,406 | 5,818 | 5,994 |
| | Q3 | 6,135 | 7,103 | 4,850 | 5,920 |
| | Q4 | 6,295 | 6,200 | 4,902 | 5,381 |
| 2006 | Q1 | 6,792 | 6,252 | 5,418 | 5,445 |
| | Q2 | 6,002 | 5,709 | 5,708 | 5,995 |
| | Q3 | 5,448 | 6,371 | 4,688 | 6,047 |
| | Q4 | 5,489 | 5,787 | 4,426 | 5,542 |
| 2007 | Q1 | 6,618 | 5,629 | 5,368 | 5,554 |
| | Q2 | 5,775 | 5,728 | 5,360 | 6,103 |
| | Q3 | 5,129 | 6,541 | 3,929 | 6,205 |
| | Q4 | 6,028 | 5,914 | 3,646 | 5,686 |
| 2008 | Q1 | 5,708 | 5,421 | 3,922 | 5,193 |
| | Q2 | 5,815 | 5,679 | 4,488 | 5,773 |
| | Q3 | 4,657 | 4,977 | 3,840 | 4,902 |
| | Q4 | 3,903 | 3,849 | 3,899 | 4,183 |
| 2009 | Q1 | 3,664 | 3,281 | 4,273 | 3,583 |
| | Q2 | 3,055 | 3,936 | 3,391 | 3,637 |
| | Q3 | 3,580 | 4,447 | 2,522 | 3,628 |
| | Q4 | 3,779 | 3,949 | 2,344 | 3,221 |
| 2010 | Q1 | 4,129 | 3,505 | 2,967 | 3,328 |
| | Q2 | 4,961 | 4,922 | 3,008 | 3,819 |
| | Q3 | 4,783 | 4,824 | 2,967 | 3,831 |
| | Q4 | 3,945 | 3,894 | 3,023 | 3,060 (R) |

* Refers to stocks at the end of the period.

Comparison of Imports & Exports

4-quarter moving totals



The data is taken from Table 14

EXTERNAL TRADE

Table 14 : Value of Overseas Trade in Selected Materials and Components for Constructional Use : Imports (cif) & Exports (fob)

| United Kingdom | | Current Prices (£'000) | | | | | |
|--|---------|------------------------|-------------|-------------|-------------|-------------|-------------|
| | | 2005 | 2006 | 2007 | 2008 | 2009 | 2010 |
| All Building Materials & Components | Imports | 9,453,474 | 10,680,836 | 12,415,890 | 12,697,046 | 10,399,489 | 11,640,774 |
| | Exports | 5,246,749 | 5,813,301 | 6,147,721 | 6,747,415 | 5,491,055 | 5,826,232 |
| | Balance | (4,206,725) | (4,867,535) | (6,268,169) | (5,949,631) | (4,908,434) | (5,814,542) |
| All Raw Materials | Imports | 149,138 | 180,137 | 213,589 | 228,019 | 158,706 | 174,076 |
| | Exports | 91,178 | 98,057 | 124,957 | 116,930 | 135,125 | 132,275 |
| | Balance | (57,960) | (82,080) | (88,632) | (111,089) | (23,581) | (41,801) |
| Sand for construction | Imports | 4,363 | 5,075 | 6,455 | 6,369 | 5,916 | 5,259 |
| | Exports | 5,498 | 5,770 | 7,769 | 9,373 | 7,967 | 7,398 |
| Crushed Rock : uncoated | Imports | 28,580 | 39,308 | 38,882 | 43,442 | 32,030 | 36,588 |
| | Exports | 60,850 | 65,985 | 71,990 | 77,930 | 76,898 | 73,819 |
| Crushed Rock : coated | Imports | 1,172 | 2,245 | 2,927 | 3,206 | 2,227 | 2,642 |
| | Exports | 4,787 | 2,621 | 3,937 | 3,862 | 3,061 | 2,988 |
| Building Stone : unprocessed | Imports | 92,059 | 95,903 | 115,064 | 124,436 | 93,174 | 98,961 |
| | Exports | 1,597 | 1,777 | 3,209 | 2,159 | 2,114 | 4,053 |
| Slate : unprocessed | Imports | 7,428 | 10,894 | 11,590 | 9,295 | 6,168 | 5,803 |
| | Exports | 703 | 309 | 1,579 | 813 | 1,924 | 844 |
| Gypsum & Anhydrite | Imports | 9,509 | 8,649 | 8,626 | 8,301 | 8,353 | 7,016 |
| | Exports | 547 | 511 | 493 | 899 | 768 | 1,148 |
| Bituminous Shale | Imports | 6,027 | 18,063 | 30,045 | 32,970 | 10,838 | 17,807 |
| | Exports | 17,196 | 21,084 | 35,980 | 21,894 | 42,393 | 42,025 |
| All Semi-Manufactures | Imports | 1,619,893 | 1,756,076 | 2,196,078 | 1,972,139 | 1,389,572 | 1,639,477 |
| | Exports | 575,831 | 618,573 | 644,415 | 648,822 | 426,190 | 479,419 |
| | Balance | (1,044,062) | (1,137,503) | (1,551,663) | (1,323,317) | (963,382) | (1,160,058) |
| Clinker | Imports | 26,338 | 40,922 | 60,554 | 35,973 | 18,520 | 17,331 |
| | Exports | 1,801 | 2,644 | 1,899 | 1,271 | 835 | 1,205 |
| Sawn Wood > 6mm thick | Imports | 691,359 | 727,916 | 915,900 | 610,292 | 554,187 | 701,821 |
| | Exports | 30,939 | 38,370 | 32,010 | 20,957 | 16,025 | 19,392 |
| Densified Wood | Imports | 2,603 | 2,782 | 2,332 | 1,767 | 1,452 | 2,301 |
| | Exports | 475 | 422 | 319 | 272 | 268 | 518 |
| Particle Board | Imports | 58,319 | 56,174 | 55,934 | 45,497 | 27,913 | 30,711 |
| | Exports | 11,058 | 16,357 | 9,377 | 8,920 | 8,382 | 8,880 |
| Laminated Wood | Imports | 232,912 | 250,615 | 282,912 | 296,969 | 215,021 | 146,602 |
| | Exports | 22,721 | 24,436 | 23,172 | 21,935 | 15,839 | 11,688 |
| Fibreboard | Imports | 58,050 | 61,429 | 72,499 | 61,614 | 56,511 | 53,790 |
| | Exports | 10,398 | 12,532 | 10,575 | 8,966 | 15,055 | 24,726 |
| Steel for Fabrication | Imports | 248,987 | 278,232 | 463,477 | 529,327 | 184,164 | 287,159 |
| | Exports | 270,581 | 236,427 | 257,126 | 301,366 | 185,537 | 216,459 |
| Aluminium for Fabrication | Imports | 211,703 | 272,983 | 277,251 | 315,948 | 268,155 | 328,839 |
| | Exports | 152,508 | 220,651 | 234,348 | 216,596 | 123,494 | 131,015 |
| Profiles of Vinyl Chloride | Imports | 48,666 | 48,747 | 41,560 | 44,169 | 44,827 | 35,894 |
| | Exports | 24,012 | 27,349 | 33,766 | 25,781 | 23,770 | 23,306 |
| Slag for Construction | Imports | 4,790 | 4,626 | 8,607 | 11,580 | 2,331 | 5,826 |
| | Exports | 2,788 | 1,747 | 1,231 | 1,018 | 921 | 1,071 |
| Tar & Bituminous Mixtures | Imports | 34,134 | 9,261 | 12,285 | 17,424 | 15,156 | 27,730 |
| | Exports | 37,635 | 26,008 | 27,895 | 27,680 | 22,781 | 27,475 |
| Lime | Imports | 2,032 | 2,389 | 2,767 | 1,579 | 1,335 | 1,473 |
| | Exports | 10,915 | 11,630 | 12,697 | 14,060 | 13,283 | 13,684 |

Current Prices (£'000)

| 2009 Q4 | 2010 Q1 | Q2 | Q3 | Q4 | | |
|-------------|-----------------|-----------------|-----------------|-------------|---------|--|
| 2,658,015 | 2,658,466 (R) | 3,014,006 (R) | 3,151,839 (R) | 2,816,463 | Imports | All Building Materials & Components |
| 1,435,673 | 1,361,777 (R) | 1,530,828 (R) | 1,520,587 (R) | 1,413,040 | Exports | |
| (1,222,342) | (1,296,689) (R) | (1,483,178) (R) | (1,631,252) (R) | (1,403,423) | Balance | |
| 39,665 | 39,726 | 48,540 (R) | 46,075 (R) | 39,735 | Imports | All Raw Materials |
| 40,188 | 19,925 (R) | 38,582 | 39,134 (R) | 34,634 | Exports | |
| 523 | (19,801) (R) | (9,958) (R) | (6,941) (R) | (5,101) | Balance | |
| 1,347 | 949 | 1,413 | 1,609 | 1,288 | Imports | Sand for construction |
| 2,046 | 1,403 | 2,310 | 1,799 (R) | 1,886 | Exports | |
| 7,779 | 8,531 | 10,044 | 8,518 (R) | 9,495 | Imports | Crushed Rock : uncoated |
| 19,180 | 13,977 (R) | 22,920 | 18,305 (R) | 18,617 | Exports | |
| 662 | 489 | 610 | 771 | 772 | Imports | Crushed Rock : coated |
| 575 | 910 | 1,010 | 736 | 332 | Exports | |
| 22,302 | 21,892 | 28,469 (R) | 26,582 (R) | 22,018 | Imports | Building Stone : unprocessed |
| 591 | 639 | 1,283 | 1,163 (R) | 968 | Exports | |
| 2,059 | 2,160 | 1,160 | 1,260 | 1,223 | Imports | Slate : unprocessed |
| 214 | 91 | 186 | 285 (R) | 282 | Exports | |
| 2,432 | 1,604 | 1,745 | 2,059 (R) | 1,608 | Imports | Gypsum & Anhydrite |
| 213 | 265 | 196 | 362 (R) | 325 | Exports | |
| 3,084 | 4,101 | 5,099 | 5,276 | 3,331 | Imports | Bituminous Shale |
| 17,369 | 2,640 | 10,677 | 16,484 | 12,224 | Exports | |
| 364,212 | 343,016 (R) | 464,999 (R) | 441,347 (R) | 390,115 | Imports | All Semi-Manufactures |
| 115,719 | 108,939 (R) | 132,837 (R) | 126,847 (R) | 110,796 | Exports | |
| (248,493) | (234,077) (R) | (332,162) (R) | (314,500) (R) | (279,319) | Balance | |
| 4,468 | 3,961 | 4,019 | 4,783 | 4,568 | Imports | Clinker |
| 189 | 65 | 291 | 241 | 608 | Exports | |
| 143,353 | 148,700 (R) | 197,372 (R) | 200,200 (R) | 155,549 | Imports | Sawn Wood > 6mm thick |
| 3,531 | 3,961 | 6,859 (R) | 4,647 (R) | 3,925 | Exports | |
| 406 | 545 | 633 | 664 | 459 | Imports | Densified Wood |
| 89 | 102 | 117 | 149 (R) | 150 | Exports | |
| 6,932 | 7,378 | 8,235 (R) | 8,281 (R) | 6,817 | Imports | Particle Board |
| 1,992 | 3,126 (R) | 1,997 | 1,837 (R) | 1,920 | Exports | |
| 56,346 | 33,381 (R) | 41,316 (R) | 41,835 (R) | 30,070 | Imports | Laminated Wood |
| 4,064 | 3,137 | 2,728 (R) | 3,649 (R) | 2,174 | Exports | |
| 14,557 | 12,352 (R) | 15,073 (R) | 14,143 (R) | 12,222 | Imports | Fibreboard |
| 7,254 | 5,911 (R) | 5,169 | 6,805 (R) | 6,841 | Exports | |
| 52,620 | 41,048 (R) | 88,894 | 70,292 (R) | 86,925 | Imports | Steel for Fabrication |
| 50,090 | 48,582 (R) | 61,982 (R) | 57,240 (R) | 48,655 | Exports | |
| 69,096 | 79,438 (R) | 85,973 (R) | 83,751 (R) | 79,677 | Imports | Aluminium for Fabrication |
| 31,566 | 30,821 | 34,268 (R) | 34,212 (R) | 31,714 | Exports | |
| 11,806 | 8,272 | 10,220 (R) | 9,412 (R) | 7,990 | Imports | Profiles of Vinyl Chloride |
| 6,603 | 5,627 | 6,289 | 6,105 (R) | 5,285 | Exports | |
| 91 | 293 | 3,732 | 862 | 939 | Imports | Slag for Construction |
| 281 | 232 | 314 | 294 | 231 | Exports | |
| 4,174 | 7,344 | 8,917 | 6,825 (R) | 4,644 | Imports | Tar & Bituminous Mixtures |
| 5,629 | 4,187 | 8,919 | 8,227 (R) | 6,142 | Exports | |
| 363 | 304 | 615 | 299 (R) | 255 | Imports | Lime |
| 4,431 | 3,188 | 3,904 | 3,441 | 3,151 | Exports | |

EXTERNAL TRADE

Table 14 : Value of Overseas Trade in Selected Materials and Components for Constructional Use : Imports (cif) & Exports (fob)

| United Kingdom | | Current Prices (£'000) | | | | | |
|--------------------------------------|---------|------------------------|-------------|-------------|-------------|-------------|-------------|
| | | 2005 | 2006 | 2007 | 2008 | 2009 | 2010 |
| All Products & Components | Imports | 7,684,443 | 8,744,623 | 10,006,223 | 10,496,888 | 8,851,211 | 9,827,221 |
| | Exports | 4,579,740 | 5,096,671 | 5,378,349 | 5,981,663 | 4,929,740 | 5,214,538 |
| | Balance | (3,104,703) | (3,647,952) | (4,627,874) | (4,515,225) | (3,921,471) | (4,612,683) |
| Wood sleepers (rail & tram) | Imports | 7,296 | 6,844 | 7,907 | 10,736 | 5,761 | 5,065 |
| | Exports | 905 | 605 | 905 | 1,074 | 688 | 717 |
| Building Stone : processed | Imports | 173,780 | 206,066 | 243,019 | 252,176 | 211,999 | 216,933 |
| | Exports | 39,290 | 36,148 | 34,465 | 38,557 | 37,466 | 30,934 |
| Slate Roofing Tiles | Imports | 53,197 | 50,718 | 58,165 | 65,872 | 57,067 | 62,373 |
| | Exports | 11,093 | 5,479 | 6,941 | 6,559 | 8,552 | 6,286 |
| Other Slate Products | Imports | 10,235 | 10,641 | 8,963 | 8,204 | 8,002 | 8,381 |
| | Exports | 2,569 | 2,406 | 2,348 | 1,643 | 1,141 | 1,725 |
| Portland Cement | Imports | 56,472 | 52,408 | 59,422 | 65,930 | 54,475 | 52,246 |
| | Exports | 21,706 | 28,179 | 26,525 | 13,271 | 4,897 | 4,178 |
| Other Cements | Imports | 22,408 | 24,858 | 24,705 | 31,452 | 47,618 | 49,514 |
| | Exports | 23,786 | 32,357 | 31,336 | 29,824 | 24,202 | 35,372 |
| Steel Sheet Piling | Imports | 47,933 | 55,911 | 71,747 | 78,763 | 48,577 | 61,509 |
| | Exports | 14,808 | 18,609 | 20,205 | 32,009 | 24,175 | 16,226 |
| Ready-Mixed Concrete | Imports | 3 | 612 | 686 | 826 | 711 | 822 |
| | Exports | 9,072 | 10,116 | 10,378 | 12,639 | 4,600 | 3,378 |
| Concrete Reinforcing Bars | Imports | 121,965 | 150,492 | 181,795 | 210,556 | 72,138 | 85,023 |
| | Exports | 38,095 | 38,587 | 107,236 | 194,136 | 68,087 | 60,252 |
| Mortars | Imports | 4,740 | 5,247 | 6,225 | 7,021 | 7,949 | 7,331 |
| | Exports | 5,566 | 5,998 | 5,772 | 6,410 | 5,360 | 3,757 |
| Clay Bricks | Imports | 27,578 | 29,102 | 35,245 | 25,877 | 18,675 | 19,778 |
| | Exports | 12,082 | 13,540 | 10,591 | 7,133 | 3,703 | 3,162 |
| Clay Roofing Tiles | Imports | 9,485 | 10,285 | 10,348 | 10,104 | 7,576 | 9,116 |
| | Exports | 1,449 | 1,680 | 303 | 276 | 511 | 589 |
| Clay Pipes | Imports | 2,163 | 600 | 669 | 313 | 146 | 225 |
| | Exports | 8,445 | 6,262 | 5,518 | 5,775 | 4,177 | 3,472 |
| Other Clay Products | Imports | 5,240 | 5,885 | 5,602 | 6,668 | 5,453 | 5,224 |
| | Exports | 14,338 | 11,123 | 17,502 | 18,852 | 2,851 | 3,188 |
| Concrete Blocks & Bricks | Imports | 5,867 | 4,544 | 11,475 | 8,615 | 4,421 | 4,361 |
| | Exports | 25,598 | 26,813 | 27,318 | 21,102 | 11,844 | 9,203 |
| Concrete Roofing Tiles | Imports | 2,408 | 4,845 | 4,664 | 7,195 | 7,342 | 5,017 |
| | Exports | 7,286 | 7,857 | 7,013 | 3,844 | 2,402 | 2,949 |
| Other Concrete Tiles & Paving | Imports | 11,752 | 14,703 | 16,130 | 18,353 | 15,576 | 13,292 |
| | Exports | 35,168 | 33,692 | 38,280 | 34,756 | 19,151 | 13,608 |
| Prefabricated Concrete Products | Imports | 20,288 | 22,439 | 26,763 | 34,841 | 23,582 | 28,694 |
| | Exports | 29,373 | 28,936 | 23,240 | 19,042 | 8,967 | 12,258 |
| Concrete Pipes | Imports | 21,365 | 27,303 | 32,767 | 36,740 | 40,646 | 45,362 |
| | Exports | 25,566 | 27,010 | 32,536 | 31,413 | 30,366 | 24,331 |

Current Prices (£'000)

| 2009 Q4 | 2010 Q1 | Q2 | Q3 | Q4 | | |
|------------|-----------------|-----------------|-----------------|-------------|---------|--------------------------------------|
| 2,254,138 | 2,275,724 (R) | 2,500,467 (R) | 2,664,417 (R) | 2,386,613 | Imports | All Products & Components |
| 1,279,766 | 1,232,913 (R) | 1,359,409 (R) | 1,354,606 (R) | 1,267,610 | Exports | |
| (974,372) | (1,042,811) (R) | (1,141,058) (R) | (1,309,811) (R) | (1,119,003) | Balance | |
| 1,328 | 1,577 | 1,430 | 1,208 | 850 | Imports | Wood sleepers (rail & tram) |
| 85 | 148 | 246 | 215 | 108 | Exports | |
| 56,873 | 51,974 (R) | 57,503 (R) | 56,241 (R) | 51,215 | Imports | Building Stone : processed |
| 7,368 | 7,243 | 9,708 | 7,661 (R) | 6,322 | Exports | |
| 15,419 | 13,092 | 14,476 | 18,631 (R) | 16,174 | Imports | Slate Roofing Tiles |
| 1,943 | 1,269 | 1,721 | 1,530 | 1,766 | Exports | |
| 2,546 | 2,234 (R) | 2,231 (R) | 2,049 (R) | 1,867 | Imports | Other Slate Products |
| 148 | 390 | 295 | 347 | 693 | Exports | |
| 11,984 | 9,988 (R) | 16,970 | 15,891 | 9,397 | Imports | Portland Cement |
| 1,407 | 950 | 1,033 | 1,133 | 1,062 | Exports | |
| 11,939 | 8,984 | 12,501 | 13,671 (R) | 14,358 | Imports | Other Cements |
| 6,491 | 8,031 | 9,906 | 9,839 | 7,596 | Exports | |
| 10,125 | 10,417 (R) | 15,331 | 19,792 (R) | 15,969 | Imports | Steel Sheet Piling |
| 6,133 | 6,128 (R) | 4,083 (R) | 2,607 (R) | 3,408 | Exports | |
| 263 | 255 | 280 | 203 | 84 | Imports | Ready-Mixed Concrete |
| 1,033 | 677 | 916 | 922 | 863 | Exports | |
| 12,747 | 14,578 | 33,371 (R) | 24,021 (R) | 13,053 | Imports | Concrete Reinforcing Bars |
| 9,743 | 18,011 | 12,829 | 17,332 (R) | 12,080 | Exports | |
| 1,865 | 1,753 | 2,309 | 1,902 (R) | 1,367 | Imports | Mortars |
| 1,119 | 1,189 | 917 | 981 | 670 | Exports | |
| 3,963 | 4,777 | 6,146 | 4,928 | 3,927 | Imports | Clay Bricks |
| 667 | 823 | 932 | 887 | 520 | Exports | |
| 1,843 | 1,737 | 2,483 | 2,567 | 2,329 | Imports | Clay Roofing Tiles |
| 85 | 167 | 291 | 33 | 98 | Exports | |
| 30 | 54 | 94 | 65 | 12 | Imports | Clay Pipes |
| 1,311 | 645 | 930 | 1,021 | 876 | Exports | |
| 1,460 | 1,112 | 1,400 | 1,492 | 1,220 | Imports | Other Clay Products |
| 669 | 1,148 | 678 | 594 | 768 | Exports | |
| 1,030 | 1,007 | 1,244 | 1,146 (R) | 964 | Imports | Concrete Blocks & Bricks |
| 1,866 | 1,897 | 3,020 | 2,775 (R) | 1,511 | Exports | |
| 1,575 | 1,525 | 769 | 1,527 | 1,196 | Imports | Concrete Roofing Tiles |
| 477 | 611 | 696 | 890 | 752 | Exports | |
| 3,908 | 3,185 (R) | 3,543 (R) | 3,016 (R) | 3,548 | Imports | Other Concrete Tiles & Paving |
| 2,898 | 2,561 | 4,533 | 4,320 | 2,194 | Exports | |
| 6,095 | 6,963 | 6,841 (R) | 9,080 (R) | 5,810 | Imports | Prefabricated Concrete Products |
| 2,204 | 2,911 | 4,031 | 3,188 (R) | 2,128 | Exports | |
| 9,489 | 10,804 (R) | 11,352 (R) | 11,826 (R) | 11,380 | Imports | Concrete Pipes |
| 8,885 | 7,119 | 6,978 | 6,006 (R) | 4,228 | Exports | |

EXTERNAL TRADE

Table 14 : Value of Overseas Trade in Selected Materials and Components for Constructional Use : Imports (cif) & Exports (fob)

| United Kingdom | | Current Prices (£'000) | | | | | |
|--|---------|------------------------|---------|---------|---------|---------|---------|
| | | 2005 | 2006 | 2007 | 2008 | 2009 | 2010 |
| Products & Components (continued) | | | | | | | |
| Structural Units (steel) | Imports | 308,125 | 361,685 | 526,140 | 564,645 | 470,772 | 594,062 |
| | Exports | 401,831 | 445,237 | 498,331 | 604,520 | 505,127 | 485,248 |
| Structural Units (aluminium) | Imports | 147,050 | 149,756 | 220,258 | 251,909 | 292,334 | 176,577 |
| | Exports | 72,729 | 81,708 | 81,777 | 98,289 | 71,158 | 54,923 |
| Steel Tubes & Hollow Sections | Imports | 94,193 | 117,181 | 142,420 | 157,616 | 108,794 | 130,905 |
| | Exports | 93,134 | 109,871 | 114,756 | 132,537 | 82,990 | 108,495 |
| Bituminous Roofing Felt | Imports | 19,560 | 21,082 | 25,627 | 30,853 | 35,139 | 39,722 |
| | Exports | 5,439 | 5,756 | 5,406 | 3,507 | 3,392 | 2,744 |
| Other Asphalt products | Imports | 9,488 | 8,449 | 9,966 | 9,999 | 9,987 | 10,488 |
| | Exports | 12,814 | 16,756 | 16,768 | 18,030 | 19,595 | 14,474 |
| Mineral Insulating Materials | Imports | 81,459 | 84,002 | 81,851 | 78,961 | 74,096 | 80,838 |
| | Exports | 115,427 | 137,321 | 139,360 | 132,697 | 106,865 | 146,419 |
| Glass Fibre | Imports | 1,240 | 2,667 | 1,482 | 1,185 | 552 | 381 |
| | Exports | 1,270 | 820 | 1,188 | 2,829 | 1,220 | 1,075 |
| Fibre Cement Products | Imports | 22,167 | 24,343 | 31,344 | 28,053 | 28,663 | 31,020 |
| | Exports | 7,403 | 6,619 | 6,668 | 7,680 | 4,847 | 5,849 |
| Building Plasters ¹ | Imports | 6,740 | 5,726 | 6,172 | 6,868 | 8,845 | .. |
| | Exports | 6,325 | 8,122 | 7,622 | 8,077 | 7,475 | .. |
| Plasters ¹ | Imports | .. | .. | .. | .. | .. | 13,687 |
| | Exports | .. | .. | .. | .. | .. | 7,904 |
| Plasterboard | Imports | 37,787 | 34,275 | 30,302 | 16,057 | 13,683 | 14,771 |
| | Exports | 16,723 | 24,261 | 19,798 | 18,397 | 16,505 | 12,912 |
| Copper Pipes | Imports | 152,310 | 212,455 | 217,861 | 245,212 | 182,487 | 239,712 |
| | Exports | 124,771 | 167,830 | 153,412 | 171,581 | 116,520 | 145,621 |
| Lead Pipes & Fittings | Imports | 114 | 168 | 93 | 18 | 509 | 148 |
| | Exports | 1,768 | 204 | 48 | 626 | 209 | 243 |
| Zinc Pipes & Fittings | Imports | 179 | 328 | 1,154 | 918 | 494 | 757 |
| | Exports | 3,989 | 5,446 | 7,166 | 6,016 | 4,388 | 914 |
| Other Zinc Building Products | Imports | 11,993 | 14,481 | 12,447 | 13,117 | 10,409 | 12,982 |
| | Exports | 21,052 | 23,874 | 20,946 | 22,026 | 22,639 | 26,521 |
| Plastic Pipes | Imports | 84,353 | 100,143 | 114,727 | 133,929 | 117,126 | 157,909 |
| | Exports | 170,734 | 187,793 | 205,332 | 211,718 | 202,745 | 214,952 |
| Other Plastic Building Products | Imports | 116,565 | 133,409 | 148,828 | 149,235 | 138,250 | 147,068 |
| | Exports | 99,630 | 100,498 | 115,008 | 117,407 | 96,902 | 109,638 |
| Builders Ironmongery | Imports | 389,610 | 452,336 | 498,373 | 505,665 | 278,144 | 311,668 |
| | Exports | 130,262 | 155,065 | 157,424 | 165,476 | 94,402 | 112,653 |
| Nails & Screws | Imports | 48,017 | 51,836 | 59,853 | 61,080 | 48,123 | 66,803 |
| | Exports | 14,170 | 15,228 | 12,553 | 12,851 | 8,281 | 8,846 |
| Mastics, Putty | Imports | 126,301 | 138,982 | 148,599 | 151,898 | 132,061 | 141,627 |
| | Exports | 82,530 | 95,347 | 103,998 | 119,256 | 110,080 | 116,457 |
| Paints & Varnishes | Imports | 297,691 | 315,961 | 339,581 | 356,451 | 345,977 | 385,980 |
| | Exports | 421,283 | 436,044 | 442,126 | 551,564 | 503,518 | 551,861 |

¹ From Q1 2010 onwards the Plasters category will contain Building Plaster and Other Plasters

30 as Building Plasters data is no longer collected

EXTERNAL TRADE

Current Prices (£'000)

| 2009 Q4 | 2010 Q1 | Q2 | Q3 | Q4 | Products & Components (continued) | |
|------------|-------------|-------------|-------------|---------|-----------------------------------|---------------------------------|
| 133,260 | 106,019 (R) | 151,257 (R) | 225,200 (R) | 111,586 | Imports | Structural Units (steel) |
| 149,210 | 91,040 | 152,215 (R) | 131,586 (R) | 110,407 | Exports | |
| 54,979 | 43,934 (R) | 45,059 (R) | 50,634 (R) | 36,950 | Imports | Structural Units (aluminium) |
| 15,374 | 13,598 | 14,053 | 15,414 (R) | 11,858 | Exports | |
| 23,541 | 29,719 (R) | 34,118 (R) | 35,708 (R) | 31,360 | Imports | Steel Tubes & Hollow Sections |
| 20,267 | 29,023 | 24,979 (R) | 26,679 (R) | 27,814 | Exports | |
| 8,286 | 9,507 | 9,931 | 10,155 | 10,129 | Imports | Bituminous Roofing Felt |
| 775 | 575 | 829 | 709 | 631 | Exports | |
| 1,989 | 1,773 | 2,255 (R) | 3,481 (R) | 2,979 | Imports | Other Asphalt products |
| 6,004 | 4,314 | 3,456 | 3,906 | 2,798 | Exports | |
| 20,388 | 19,269 | 20,967 | 21,750 (R) | 18,852 | Imports | Mineral Insulating Materials |
| 27,089 | 32,947 | 37,791 | 39,416 (R) | 36,265 | Exports | |
| 144 | 89 | 102 | 132 | 58 | Imports | Glass Fibre |
| 14 | 147 | 383 | 249 | 296 | Exports | |
| 6,341 | 7,022 | 7,845 | 8,698 (R) | 7,455 | Imports | Fibre Cement Products |
| 1,285 | 1,038 | 1,102 | 2,170 | 1,539 | Exports | |
| 2,384 | .. | .. | .. | .. | Imports | Building Plasters ¹ |
| 1,660 | .. | .. | .. | .. | Exports | |
| .. | 3,497 (R) | 3,150 | 3,856 (R) | 3,184 | Imports | Plasters ¹ |
| .. | 2,331 | 1,851 | 1,940 | 1,782 | Exports | |
| 3,068 | 3,663 | 4,007 (R) | 3,360 (R) | 3,741 | Imports | Plasterboard |
| 3,026 | 3,528 | 3,720 | 2,986 | 2,678 | Exports | |
| 48,405 | 62,906 (R) | 63,461 (R) | 58,424 (R) | 54,921 | Imports | Copper Pipes |
| 33,097 | 33,575 | 37,039 (R) | 35,747 (R) | 39,260 | Exports | |
| 180 | 146 | 0 | 0 | 2 | Imports | Lead Pipes & Fittings |
| 13 | 1 | 116 | 96 | 30 | Exports | |
| 142 | 137 | 202 | 185 | 233 | Imports | Zinc Pipes & Fittings |
| 1,276 | 567 | 152 | 84 | 111 | Exports | |
| 2,672 | 2,741 | 3,877 (R) | 3,343 | 3,021 | Imports | Other Zinc Building Products |
| 5,968 | 6,436 | 7,013 | 6,332 (R) | 6,740 | Exports | |
| 30,800 | 38,592 (R) | 42,981 (R) | 39,976 (R) | 36,360 | Imports | Plastic Pipes |
| 40,955 | 48,932 | 60,016 (R) | 59,567 (R) | 46,437 | Exports | |
| 33,365 | 35,605 (R) | 37,516 (R) | 40,630 (R) | 33,317 | Imports | Other Plastic Building Products |
| 24,746 | 24,300 | 27,940 (R) | 30,649 (R) | 26,749 | Exports | |
| 71,314 | 75,362 (R) | 81,282 (R) | 79,923 (R) | 75,101 | Imports | Builders Ironmongery |
| 24,696 | 26,838 (R) | 28,705 (R) | 28,896 (R) | 28,214 | Exports | |
| 12,484 | 15,367 | 15,702 (R) | 19,437 (R) | 16,297 | Imports | Nails & Screws |
| 2,135 | 2,021 | 2,344 | 2,394 (R) | 2,087 | Exports | |
| 32,632 | 32,604 (R) | 37,679 (R) | 36,589 (R) | 34,755 | Imports | Mastics, Putty |
| 29,759 | 26,238 (R) | 31,485 | 29,839 (R) | 28,895 | Exports | |
| 83,714 | 93,392 (R) | 98,097 (R) | 104,311 (R) | 90,180 | Imports | Paints & Varnishes |
| 124,318 | 119,267 (R) | 149,379 (R) | 147,476 (R) | 135,739 | Exports | |

¹ From Q1 2010 onwards the Plasters category will contain Building Plaster and Other Plasters as Building Plasters data is no longer collected

EXTERNAL TRADE

Table 14 : Value of Overseas Trade in Selected Materials and Components for Constructional Use : Imports (cif) & Exports (fob)

| United Kingdom | | Current Prices (£'000) | | | | | |
|--|---------|------------------------|---------|---------|---------|---------|---------|
| | | 2005 | 2006 | 2007 | 2008 | 2009 | 2010 |
| Products & Components (continued) | | | | | | | |
| Unglazed Ceramic Tiles | Imports | 48,737 | 54,271 | 64,691 | 71,099 | 62,181 | 56,492 |
| | Exports | 2,777 | 2,475 | 4,420 | 3,607 | 2,424 | 2,829 |
| Glazed Ceramic Tiles | Imports | 285,488 | 285,080 | 290,867 | 279,656 | 256,303 | 221,963 |
| | Exports | 17,217 | 21,444 | 20,554 | 17,706 | 15,671 | 15,455 |
| Ceramic Sanitaryware | Imports | 157,865 | 173,687 | 181,603 | 174,194 | 159,123 | 168,248 |
| | Exports | 48,004 | 54,231 | 58,229 | 53,471 | 37,635 | 37,730 |
| Plastic Sanitaryware | Imports | 98,663 | 105,586 | 126,472 | 120,004 | 114,695 | 112,054 |
| | Exports | 68,603 | 78,717 | 78,811 | 83,908 | 79,444 | 67,353 |
| Metal Sanitaryware | Imports | 110,303 | 123,203 | 139,820 | 143,118 | 111,737 | 123,917 |
| | Exports | 34,553 | 32,212 | 33,511 | 33,167 | 31,969 | 28,261 |
| Flat Glass | Imports | 53,410 | 55,901 | 71,800 | 61,061 | 53,819 | 60,769 |
| | Exports | 51,502 | 67,142 | 83,174 | 107,783 | 60,380 | 73,175 |
| Other Glass Products | Imports | 67,274 | 78,695 | 76,235 | 98,993 | 82,857 | 81,182 |
| | Exports | 25,896 | 31,631 | 37,712 | 40,296 | 34,188 | 32,659 |
| Wood Veneers | Imports | 35,329 | 40,586 | 38,516 | 39,407 | 26,102 | 31,672 |
| | Exports | 9,663 | 10,607 | 10,243 | 10,034 | 5,747 | 5,824 |
| Wood Mouldings | Imports | 69,452 | 79,513 | 73,907 | 64,579 | 55,648 | 65,717 |
| | Exports | 18,922 | 20,362 | 18,289 | 11,169 | 8,861 | 9,660 |
| Wood Block Flooring | Imports | 117,318 | 132,978 | 125,111 | 125,242 | 112,661 | 144,225 |
| | Exports | 8,086 | 8,448 | 5,465 | 6,136 | 5,746 | 4,529 |
| Other Builder's Woodwork | Imports | 78,356 | 93,869 | 109,023 | 101,242 | 80,645 | 99,248 |
| | Exports | 13,299 | 21,562 | 19,079 | 15,908 | 14,395 | 14,320 |
| Windows (wood) | Imports | 66,201 | 71,679 | 84,257 | 121,171 | 110,061 | 111,607 |
| | Exports | 5,693 | 9,465 | 12,880 | 10,219 | 10,721 | 7,614 |
| Doors (wood) | Imports | 164,036 | 191,637 | 205,158 | 209,133 | 184,609 | 217,279 |
| | Exports | 29,901 | 38,546 | 37,008 | 26,929 | 19,395 | 15,115 |
| Doors & Windows (steel) | Imports | 57,661 | 54,493 | 40,294 | 39,652 | 39,726 | 35,530 |
| | Exports | 20,146 | 21,231 | 25,824 | 26,300 | 20,643 | 19,220 |
| Doors & Windows (aluminium) | Imports | 61,543 | 68,235 | 65,655 | 63,705 | 64,279 | 70,312 |
| | Exports | 27,784 | 35,883 | 32,687 | 25,473 | 24,410 | 19,947 |
| Doors & Windows (plastic) | Imports | 27,227 | 41,045 | 39,459 | 39,377 | 43,885 | 46,656 |
| | Exports | 63,205 | 68,641 | 63,218 | 56,119 | 41,193 | 45,299 |
| Cork Tiles | Imports | 2,042 | 2,540 | 2,877 | 2,258 | 1,779 | 2,948 |
| | Exports | 1,661 | 2,878 | 1,611 | 1,641 | 1,702 | 1,646 |
| Linoleum Floor Coverings | Imports | 179,151 | 213,518 | 242,787 | 256,585 | 244,149 | 278,129 |
| | Exports | 178,384 | 188,215 | 195,735 | 224,522 | 213,628 | 228,660 |
| Wallpaper | Imports | 39,128 | 40,997 | 58,962 | 58,636 | 54,487 | 56,522 |
| | Exports | 55,455 | 54,868 | 67,165 | 73,506 | 66,782 | 82,428 |
| Textile Wall Coverings | Imports | 1,314 | 1,187 | 1,572 | 2,833 | 2,346 | 3,319 |
| | Exports | 485 | 373 | 598 | 500 | 357 | 581 |

Current Prices (£'000)

| 2009 Q4 | 2010 Q1 | Q2 | Q3 | Q4 | Products & Components (continued) | |
|------------------|-------------------------|--------------------------|--------------------------|------------------|-----------------------------------|-----------------------------|
| 17,041 589 | 13,664 (R) 641 | 13,863 (R) 589 | 15,249 (R) 858 (R) | 13,716 741 | Imports Exports | Unglazed Ceramic Tiles |
| 65,282 4,048 | 53,221 (R) 3,010 | 56,379 (R) 3,877 | 57,701 (R) 4,266 (R) | 54,662 4,302 | Imports Exports | Glazed Ceramic Tiles |
| 41,699 9,544 | 46,682 8,038 (R) | 39,454 (R) 9,283 | 39,705 (R) 10,306 (R) | 42,407 10,103 | Imports Exports | Ceramic Sanitaryware |
| 27,675 19,249 | 29,769 16,979 (R) | 28,066 (R) 18,002 | 28,228 (R) 17,785 (R) | 25,991 14,587 | Imports Exports | Plastic Sanitaryware |
| 27,939 8,687 | 33,444 7,511 | 27,641 (R) 6,193 | 29,693 (R) 6,769 (R) | 33,139 7,788 | Imports Exports | Metal Sanitaryware |
| 14,311 16,698 | 12,479 (R) 16,512 | 13,948 (R) 18,559 | 16,719 (R) 20,330 (R) | 17,623 17,774 | Imports Exports | Flat Glass |
| 19,400 10,166 | 19,186 7,427 | 20,835 (R) 8,686 | 22,188 (R) 8,404 (R) | 18,973 8,142 | Imports Exports | Other Glass Products |
| 6,132 1,636 | 7,015 (R) 1,249 (R) | 7,634 (R) 1,166 | 7,225 (R) 1,474 (R) | 9,798 1,935 | Imports Exports | Wood Veneers |
| 12,179 1,954 | 17,530 (R) 2,069 (R) | 18,052 (R) 2,816 | 17,447 (R) 2,665 | 12,688 2,110 | Imports Exports | Wood Mouldings |
| 31,266 1,220 | 35,233 (R) 1,067 (R) | 35,119 (R) 1,229 (R) | 39,610 (R) 981 | 34,263 1,252 | Imports Exports | Wood Block Flooring |
| 21,752 3,428 | 21,144 (R) 2,834 (R) | 26,847 (R) 3,593 | 27,498 (R) 3,895 (R) | 23,759 3,998 | Imports Exports | Other Builder's Woodwork |
| 27,512 1,745 | 26,459 (R) 2,266 | 27,578 (R) 1,956 | 28,830 (R) 1,524 (R) | 28,740 1,868 | Imports Exports | Windows (wood) |
| 42,686 4,165 | 47,075 3,525 (R) | 56,015 3,789 (R) | 62,771 (R) 4,314 (R) | 51,418 3,487 | Imports Exports | Doors (wood) |
| 9,423 4,323 | 8,367 4,757 | 8,230 4,314 | 9,981 (R) 4,730 | 8,952 5,419 | Imports Exports | Doors & Windows (steel) |
| 15,995 10,562 | 13,615 4,621 | 15,975 5,437 | 18,717 (R) 5,362 (R) | 22,005 4,527 | Imports Exports | Doors & Windows (aluminium) |
| 11,733 10,601 | 12,056 14,207 | 13,600 (R) 11,470 | 9,976 10,451 (R) | 11,024 9,171 | Imports Exports | Doors & Windows (plastic) |
| 471 462 | 525 467 | 875 336 | 819 (R) 435 | 729 408 | Imports Exports | Cork Tiles |
| 60,864 54,499 | 66,548 (R) 57,454 | 67,818 (R) 62,655 (R) | 71,258 (R) 58,015 (R) | 72,505 50,536 | Imports Exports | Linoleum Floor Coverings |
| 15,451 17,986 | 14,537 19,872 | 15,840 21,139 | 12,588 (R) 19,920 (R) | 13,557 21,497 | Imports Exports | Wallpaper |
| 646 108 | 758 195 | 753 103 | 942 163 | 866 120 | Imports Exports | Textile Wall Coverings |

EXTERNAL TRADE

Table 14 : Value of Overseas Trade in Selected Materials and Components for Constructional Use : Imports (cif) & Exports (fob)

| United Kingdom | | Current Prices (£'000) | | | | | |
|--|---------|------------------------|-----------|-----------|-----------|---------|-----------|
| | | 2005 | 2006 | 2007 | 2008 | 2009 | 2010 |
| Products & Components (continued) | | | | | | | |
| Fitted Kitchens (assembled) | Imports | 88,220 | 98,938 | 144,017 | 171,688 | 130,058 | 109,844 |
| | Exports | 38,898 | 34,260 | 35,322 | 24,163 | 17,307 | 16,001 |
| Prefabricated Buildings (wood) | Imports | 18,617 | 21,986 | 49,086 | 40,341 | 34,264 | 31,867 |
| | Exports | 14,075 | 22,603 | 27,807 | 15,170 | 13,234 | 10,452 |
| Prefabricated Buildings (steel) | Imports | 25,459 | 30,281 | 30,083 | 50,546 | 46,291 | 29,663 |
| | Exports | 12,814 | 42,881 | 27,464 | 46,140 | 48,512 | 37,010 |
| Prefabricated Buildings (other) | Imports | 52,602 | 67,586 | 73,414 | 74,165 | 44,887 | 34,323 |
| | Exports | 90,503 | 45,997 | 35,795 | 72,310 | 28,104 | 17,355 |
| Mobile Homes | Imports | 8,300 | 7,196 | 7,113 | 6,574 | 5,065 | 2,165 |
| | Exports | 12,000 | 8,574 | 11,291 | 7,250 | 7,750 | 3,559 |
| Taps & Valves | Imports | 209,659 | 265,657 | 277,804 | 315,427 | 269,199 | 321,817 |
| | Exports | 51,133 | 62,345 | 72,708 | 60,597 | 64,447 | 73,145 |
| Pumps (circulating) | Imports | 20,706 | 25,544 | 24,274 | 21,754 | 19,900 | 21,874 |
| | Exports | 24,986 | 28,407 | 27,131 | 27,964 | 23,603 | 32,078 |
| Central Heating Boilers | Imports | 433,201 | 473,691 | 493,841 | 547,726 | 566,588 | 549,915 |
| | Exports | 72,126 | 76,578 | 70,581 | 80,756 | 91,053 | 74,543 |
| Radiators | Imports | 173,674 | 193,948 | 197,513 | 184,218 | 175,518 | 189,076 |
| | Exports | 30,596 | 37,707 | 46,937 | 57,884 | 34,303 | 31,010 |
| Water Heaters | Imports | 64,514 | 75,237 | 88,897 | 105,755 | 105,711 | 84,680 |
| | Exports | 70,225 | 67,902 | 64,471 | 84,810 | 64,883 | 62,951 |
| Space Heaters | Imports | 139,190 | 120,029 | 107,581 | 110,403 | 114,047 | 135,298 |
| | Exports | 47,604 | 39,930 | 37,313 | 35,118 | 32,068 | 31,515 |
| Fan Systems | Imports | 134,486 | 152,830 | 198,750 | 161,772 | 127,327 | 171,589 |
| | Exports | 94,317 | 132,081 | 94,651 | 114,006 | 107,846 | 109,256 |
| Air Conditioning Equipment | Imports | 360,514 | 379,149 | 514,454 | 644,353 | 462,588 | 527,491 |
| | Exports | 218,235 | 201,257 | 231,144 | 268,134 | 240,594 | 270,121 |
| Air Purifying Equipment | Imports | 37,950 | 31,441 | 29,828 | 41,389 | 50,854 | 51,138 |
| | Exports | 108,351 | 114,377 | 120,706 | 138,002 | 102,158 | 148,515 |
| Hand Driers | Imports | 3,887 | 5,010 | 4,057 | 7,634 | 7,443 | 8,987 |
| | Exports | 1,177 | 1,036 | 1,648 | 1,017 | 1,247 | 1,905 |
| Meters | Imports | 20,971 | 25,666 | 24,502 | 24,155 | 24,237 | 28,701 |
| | Exports | 22,699 | 25,025 | 26,216 | 47,988 | 42,969 | 52,398 |
| Plugs & Sockets | Imports | 183,550 | 232,657 | 231,664 | 269,479 | 257,049 | 302,299 |
| | Exports | 106,743 | 169,346 | 148,672 | 153,173 | 137,529 | 182,194 |
| Electrical Wires | Imports | 789,156 | 1,028,495 | 1,303,905 | 1,236,486 | 909,830 | 1,212,194 |
| | Exports | 392,062 | 458,568 | 521,508 | 554,723 | 425,815 | 514,117 |
| Electrical Insulators | Imports | 32,793 | 37,729 | 30,477 | 34,957 | 29,102 | 30,601 |
| | Exports | 38,222 | 28,858 | 33,830 | 32,548 | 26,983 | 32,412 |
| Lamps & Fittings | Imports | 354,173 | 392,781 | 449,230 | 462,930 | 424,435 | 513,005 |
| | Exports | 179,800 | 195,049 | 221,180 | 236,971 | 223,741 | 215,790 |
| Fire & Security Alarms | Imports | 140,511 | 153,054 | 144,891 | 139,973 | 136,550 | 151,473 |
| | Exports | 130,795 | 150,929 | 154,520 | 182,447 | 238,608 | 207,946 |
| Lifts & Escalators | Imports | 112,695 | 104,250 | 118,401 | 129,307 | 115,017 | 94,061 |
| | Exports | 11,664 | 24,833 | 43,142 | 28,699 | 19,697 | 14,626 |

EXTERNAL TRADE

Current Prices (£'000)

| 2009 Q4 | 2010 Q1 | Q2 | Q3 | Q4 | Products & Components (continued) | |
|------------|-------------|-------------|-------------|---------|-----------------------------------|---------------------------------|
| 33,979 | 27,183 | 26,230 (R) | 30,839 (R) | 25,592 | Imports | Fitted Kitchens (assembled) |
| 5,143 | 3,469 | 3,448 | 4,826 (R) | 4,258 | Exports | |
| 4,961 | 8,728 | 9,721 (R) | 7,582 (R) | 5,836 | Imports | Prefabricated Buildings (wood) |
| 3,645 | 4,996 | 1,961 | 1,957 (R) | 1,538 | Exports | |
| 5,118 | 4,744 | 8,700 | 9,184 (R) | 7,035 | Imports | Prefabricated Buildings (steel) |
| 4,470 | 9,649 | 11,858 | 7,949 (R) | 7,554 | Exports | |
| 6,304 | 9,228 | 11,056 (R) | 9,826 | 4,213 | Imports | Prefabricated Buildings (other) |
| 7,299 | 4,910 | 6,150 | 3,746 | 2,549 | Exports | |
| 871 | 481 | 908 | 639 | 137 | Imports | Mobile Homes |
| 1,712 | 443 | 1,308 | 1,002 | 806 | Exports | |
| 72,973 | 81,430 | 81,730 (R) | 83,404 (R) | 75,253 | Imports | Taps & Valves |
| 18,958 | 15,993 (R) | 17,778 | 20,033 (R) | 19,341 | Exports | |
| 5,986 | 6,215 (R) | 5,433 | 5,310 (R) | 4,916 | Imports | Pumps (circulating) |
| 7,664 | 7,357 | 5,411 | 13,555 (R) | 5,755 | Exports | |
| 155,642 | 126,761 (R) | 135,621 (R) | 132,526 (R) | 155,007 | Imports | Central Heating Boilers |
| 22,821 | 17,062 | 17,127 | 17,695 (R) | 22,659 | Exports | |
| 49,317 | 53,669 | 43,474 (R) | 45,109 (R) | 46,824 | Imports | Radiators |
| 8,605 | 7,853 | 7,732 | 7,593 (R) | 7,832 | Exports | |
| 19,983 | 18,243 (R) | 21,672 | 23,572 (R) | 21,193 | Imports | Water Heaters |
| 16,825 | 14,358 | 17,416 (R) | 14,706 (R) | 16,471 | Exports | |
| 39,321 | 26,169 (R) | 27,811 | 37,616 (R) | 43,702 | Imports | Space Heaters |
| 9,742 | 7,660 (R) | 6,622 (R) | 7,120 (R) | 10,113 | Exports | |
| 33,985 | 39,842 | 44,743 (R) | 46,547 (R) | 40,457 | Imports | Fan Systems |
| 27,215 | 24,102 | 26,657 (R) | 27,359 (R) | 31,138 | Exports | |
| 115,268 | 123,614 | 142,968 (R) | 142,308 (R) | 118,601 | Imports | Air Conditioning Equipment |
| 76,975 | 67,134 | 71,079 | 64,424 (R) | 67,484 | Exports | |
| 13,042 | 12,501 (R) | 11,472 (R) | 13,585 (R) | 13,580 | Imports | Air Purifying Equipment |
| 23,116 | 28,119 (R) | 37,077 (R) | 41,624 (R) | 41,695 | Exports | |
| 1,659 | 2,201 | 2,040 | 2,281 (R) | 2,465 | Imports | Hand Driers |
| 336 | 285 | 592 | 508 | 520 | Exports | |
| 7,379 | 7,413 | 7,449 | 6,896 | 6,943 | Imports | Meters |
| 14,151 | 10,351 | 12,397 | 16,648 (R) | 13,002 | Exports | |
| 65,177 | 67,546 (R) | 75,273 (R) | 81,180 (R) | 78,300 | Imports | Plugs & Sockets |
| 38,466 | 42,926 (R) | 46,423 (R) | 48,150 (R) | 44,695 | Exports | |
| 261,279 | 270,032 (R) | 299,321 (R) | 318,417 (R) | 324,424 | Imports | Electrical Wires |
| 115,748 | 127,508 (R) | 125,682 (R) | 131,539 (R) | 129,388 | Exports | |
| 6,459 | 6,612 (R) | 11,104 (R) | 6,179 (R) | 6,706 | Imports | Electrical Insulators |
| 6,923 | 7,780 | 9,765 | 7,721 (R) | 7,146 | Exports | |
| 107,931 | 118,102 (R) | 123,732 (R) | 144,374 (R) | 126,797 | Imports | Lamps & Fittings |
| 59,044 | 49,660 | 51,471 (R) | 56,428 (R) | 58,231 | Exports | |
| 32,583 | 36,029 | 39,874 | 40,677 | 34,893 | Imports | Fire & Security Alarms |
| 58,349 | 75,259 (R) | 44,356 (R) | 44,776 (R) | 43,555 | Exports | |
| 20,894 | 22,314 | 25,851 (R) | 24,173 (R) | 21,723 | Imports | Lifts & Escalators |
| 4,690 | 2,704 | 3,596 | 4,184 (R) | 4,142 | Exports | |

Major Revisions:

The 2010 Annual Ready-Mixed Concrete Deliveries (Table 13) has been revised, due to a publishing error, as the previously published total only contained the data for the first three quarters of 2010. The new figure contains data for all four quarters of 2010.

Apologies for any inconvenience caused.

© Crown copyright 2011

Published under licence from the Controller of Her Majesty's Stationery Office.

Applications for reproductions should be made in writing to :-

The Copyright Unit, Her Majesty's Stationery Office, St. Clements House,
2-16 Colegate, Norwich NR3 1BQ

March 2011

URN 11 / 313b

ISSN 0264-6188