

Helping disabled people do the best they can
and take part in their local area

Making it happen – Tell us what you think

Important

We want to know what you think about helping disabled people do the best they can and take part in their local area.

Green writing

In this Easy Read booklet we explain what some words mean.

The first time we mention any of these words, it is in **bold green** writing. We then write what the words mean in a blue box.

These words and what they mean are also in a word list at the back of the booklet.

If any of the words are used later in the booklet, we show them in **normal green** writing. If you see words in **normal green** writing, you can look up what they mean by looking for the blue box earlier in the booklet, or by looking at the word list.

The CDS Easy Read illustrations we develop are intended specifically for use in this publication. The Office for Disability Issues has the right to share, send, print and distribute this product in its current format. The images within this product should not be copied from this document and used for other purposes or passed on to a third party. Do not extract, modify, adapt, alter, or otherwise attempt to change the illustrations for other purposes without written permission from CDS.

CDS, 7 Eastgate, Leeds LS2 7LY

Tel: 0113 399 4000

Web: www.cds.co.uk/clarity

Contents

About this booklet	4
Our rules.....	6
Our ideas	8
Our questions	10
Question 1.....	10
Question 2.....	10
Question 3.....	11
Question 4.....	11
Question 5.....	12
Question 6.....	12
Question 7.....	13
Who this consultation is for	14
How to reply to the consultation.....	15
Word list	16

About this booklet

We want to help disabled people do the best they can and take part in their local area.

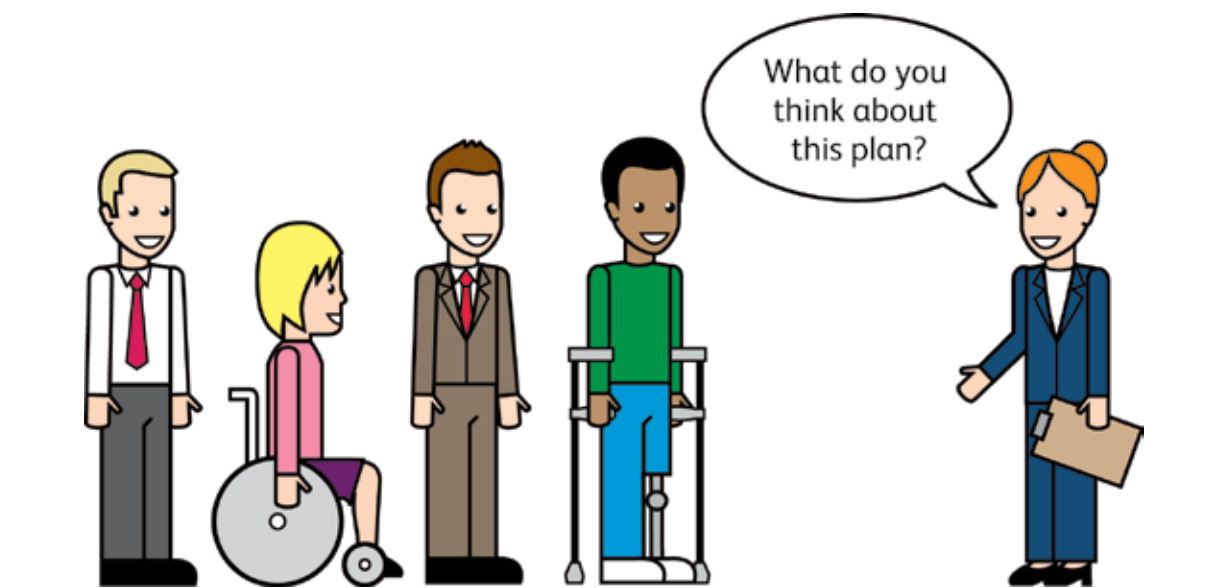
We have been working with disabled people and with people in other Government Departments.

On 2 July 2013 we printed a booklet called Helping disabled people do the best they can and take part in their local area – Making it happen. That booklet tells you about our plans.

We are looking closely at the things that are most important to disabled people. One of these things is getting disabled people **involved** in making our new plans.

Involve or involved

Being **involved** is not the same as being asked. Being **involved** means disabled people playing a bigger part in planning, not just being asked about work done by other people.



Every 3 years we look at the way **Equality 2025** is working.

Equality 2025

This is a group of disabled people who listen to the views of disabled people and tell Government what they think.

The last time we looked at how **Equality 2025** was working it was decided that we should **involve** disabled people when we are making new plans.



We want to find out what you think about getting disabled people **involved** and what you think is the best way of doing this.

Our rules

When we are thinking about the best way of talking to people and getting advice we will make sure we do these things

- **Equality 2025** has already done a lot of good things. We will carry on that work and take it further.
- We will make sure that more disabled people have a say in what happens in Government.
- We will find out more about the lives of disabled people and the things they can do very well.



- We will work with more disabled people and disabled people's groups.
- We will have systems that are clear to everyone and that people can ask questions about. But we know that sometimes people will want to keep the things we talk about a secret.
- We will bring in groups of people to help us work on new rules for a set amount of time.

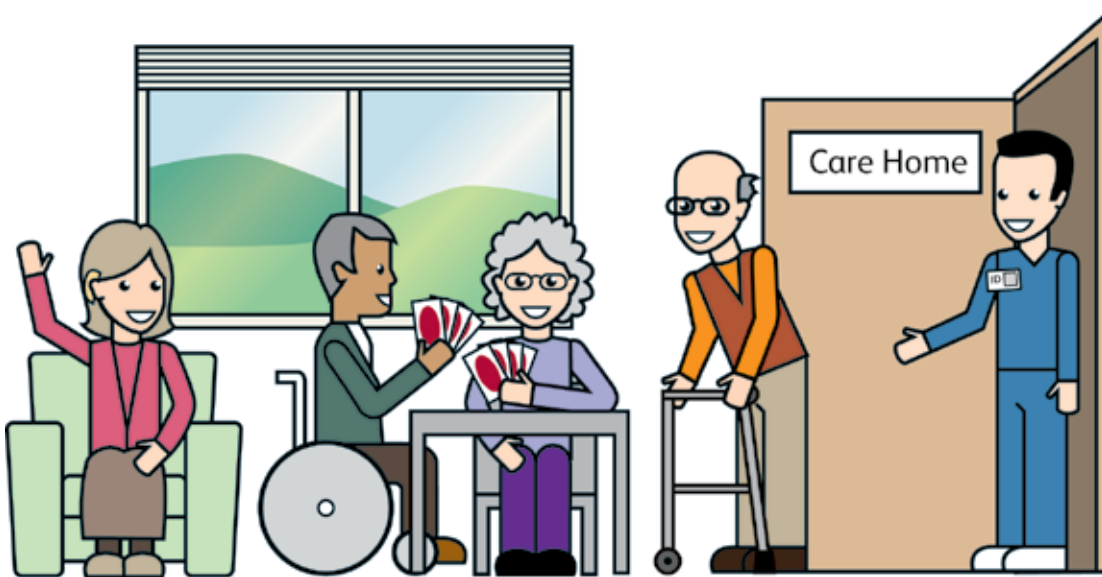
- We will **involve** disabled people and other experts when we are talking about things and making plans for the future.
- We will find out what disabled people's groups from different areas think about our plans.
- We will **involve** people that we do not hear from very often. These are **black and minority ethnic people**, people with learning disabilities and people who live in **care homes**.

Black and minority ethnic

These are people who because of their race, colour, culture, language or nationality are different from most of the population. For example, black Caribbean people, Pakistani people, Chinese people and Bangladeshi people.

Care homes

These are places where people go to live when they cannot live in their own home. Sometimes they are called residential or nursing homes.



Our ideas

There are 2 parts to this **consultation**.

Consultation

This is when the Government asks people what they think about its plans. They also ask people for their ideas about the best way of doing things.

We are going to ask you what you think about these things.

- Advice about certain areas of making rules and telling people about the rules. This advice could be given to us by experts on living with a disability and experts on certain **impairments**.

Impairment

An impairment may include things like being unable to walk well, not being able to see or hear other people clearly, not being able to think hard for a long time, or not being able to remember things.

- Talking about the things that we think are the most important and how we will reach our targets. We could do this by talking to people from disability groups and other experts.

We also need to think about the best way of carrying out these 2 ideas. There are 2 choices.

- **The Office for Disability Issues** can carry out the 2 ideas.
- The **Office for Disability Issues** can work with another group like a disability group, or with people from many disability groups.

Office for Disability Issues

This is a group of people working for the government. They help government workers learn more about disabled people, and they help to make things fairer for disabled people.



Our questions

Question 1

Do you think our rules cover everything or do we need to have more rules?

If you think we need more rules, what other rules do you think we should have?

Question 2

How do you think we should find people or groups to give us advice?

Question 3

What rules should we have to make sure we find the right experts?

Question 4

How can we make sure that people from disability groups and other experts are the right people to talk to?

Question 5

What is the best way to make sure that the talks we have come up with answers to our questions?

Question 6

What is the best way of carrying out our 2 ideas?

Question 7

How can we make sure that we use the things we have to get the results we want? This is called value for money.

Who this consultation is for

We want to hear from anyone who is interested in helping disabled people do the best they can and take part in their local area. We would most like to hear from disabled people and disabled people's groups.



This consultation is for England, Wales and Scotland. We would also like to hear from people and groups in Northern Ireland.

How to reply to the consultation

You can reply to this consultation in 2 ways.

You can post your replies to this address.

Office for Disability Issues
Department for Work and Pensions
Ground Floor
Caxton House
Tothill Street
London
SW1H 9NA

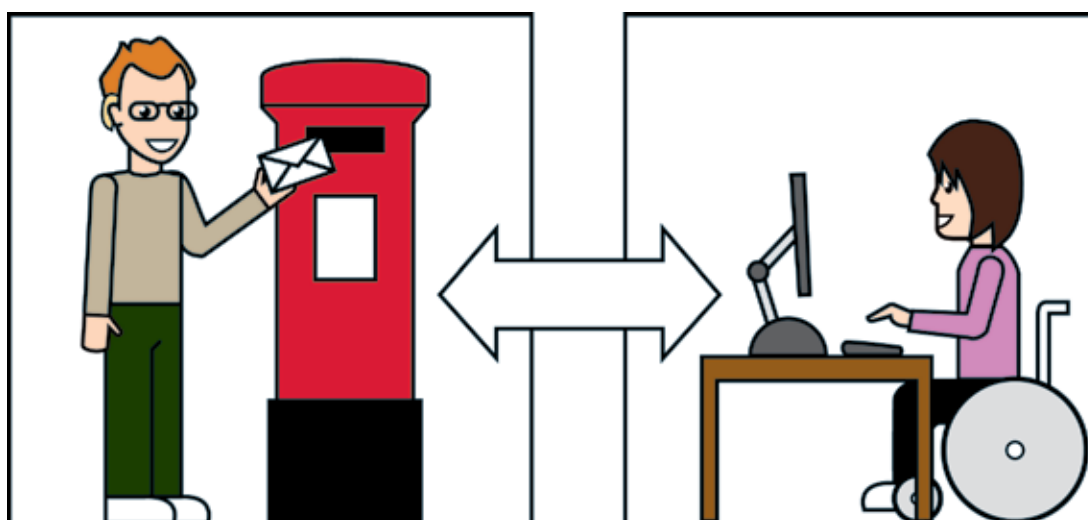
Or you can email your replies to this address.

fulfilling.potential@dwp.gsi.gov.uk

Make sure that your reply reaches us by **16 October 2013**.

When you reply please say if you are replying for yourself or for a group. If you are replying for a group please tell us about the group.

We will let you know that we have had your reply.



Word list

Black and minority ethnic

These are people who because of their race, colour, culture, language or nationality are different from most of the population. For example, black Caribbean people, Pakistani people, Chinese people and Bangladeshi people7

Care homes

These are places where people go to live when they cannot live in their own home. Sometimes they are called residential or nursing homes7

Consultation

This is when the Government asks people what they think about its plans. They also ask people for their ideas about the best way of doing things8

Equality 2025

This is a group of disabled people who listen to the views of disabled people and tell Government what they think5

Impairment

An impairment may include things like being unable to walk well, not being able to see or hear other people clearly, not being able to think hard for a long time, or not being able to remember things 8

Involve or involved

Being **involved** is not the same as being asked. Being **involved** means disabled people playing a bigger part in planning, not just being asked about work done by other people4

How to contact us

Email fulfilling.potential@dwp.gsi.gov.uk



Telephone 020 7340 4000



Letters Office for Disability Issues
 (Disability Strategy Team)
 Ground Floor
 Caxton House
 6-12 Tothill Street
 London
 SW1H 9NA



More information

You can get more information or look at the full report about helping disabled people do the best they can on our website at www.odi.gov.uk/fulfilling-potential

Produced by the Office for Disability Issues

© Crown copyright

Produced in the UK, July 2013