



Skills Funding
Agency

Uninstallation Guide

Funding Information System (FIS)

Document Details	
Document Type:	Uninstallation Guide
Creation Date:	05/03/2014
Document Version:	1.0



Skills Funding
Agency

Uninstallation Guide

Funding Information System

Change to this document

Version	Date	Changes made
V1.0	05/03/2014	Initial version to support the uninstallation of the Funding Information System (FIS)



Uninstallation Guide

Funding Information System

Contents

Uninstalling FIS	4
1. Uninstall FIS application using Control Panel	4
2. Remove the FIS's associated SQL databases from SQL Express	6
3. Remove the resource data files used by SQL Express.....	9
Glossary	10



Uninstallation Guide

Funding Information System

Uninstalling FIS

To uninstall FIS, the entire application and associated databases must be removed. The FIS application does not store data itself, the data it uses is stored in SQL Express database instance (see the glossary below if you are unsure as to what a database 'instance' is).

Steps to follow when uninstalling FIS:

1. Uninstall the FIS Application
2. Remove the FIS-associated SQL Databases from SQL Express
3. Remove the resource data files used by SQL Express

1. Uninstall FIS Application using Control Panel

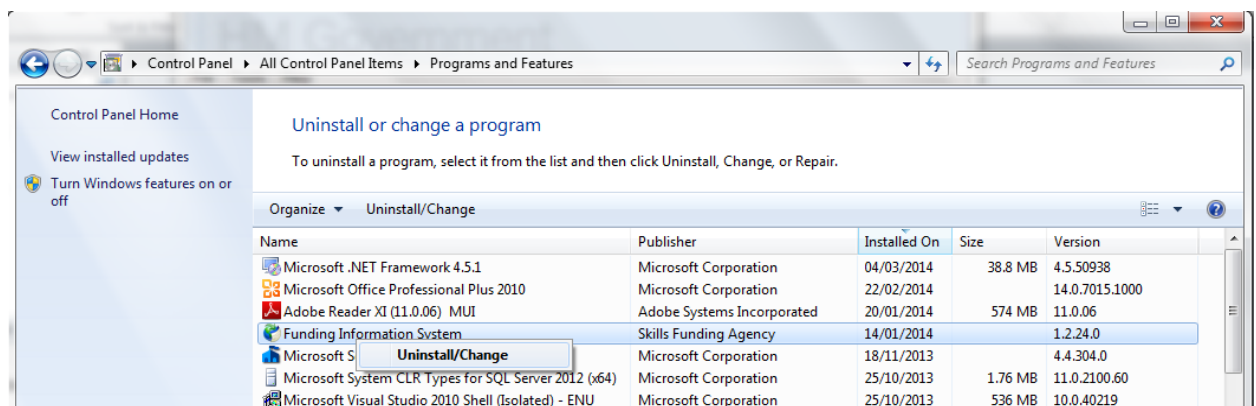
For Windows 7 and Windows 8 users:

1. From the Start menu, select Control Panel > Programs & Features
2. Select Funding Information System
3. Select Uninstall/Change

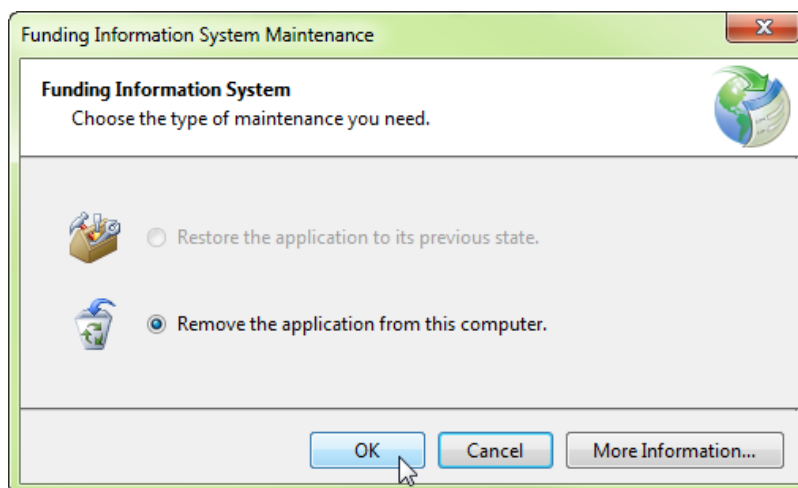


Uninstallation Guide

Funding Information System



The following screen will appear.



In the Funding Information System Maintenance screen, ensure “Remove the application from this computer” is selected, and then click OK. FIS will be removed from your computer without any further prompting or dialogue.

NB. The prerequisites (MS SQL Express and .NET Framework) will remain on your machine even after you uninstall FIS. You can uninstall these separately, by repeating the above step



Uninstallation Guide

Funding Information System

2. Remove the FIS's associated SQL Databases from SQL Express

The version of SQL Express that comes with FIS in the prerequisites installation process is the database engine component only. As SQL Express databases are only viewable by using the relevant SQL Management Studio tool, it must be installed to equip SQL Express with a user interface. This is available for free use and can be downloaded from Microsoft download page:

<http://www.microsoft.com/en-gb/download/details.aspx?id=29062>

Please remember when downloading SQL Management Studio that the nomenclature for 32 bit is x86 and 64 bit is x64. Download the correct version for the SQL Express Database version that you have installed and the architecture version of the host PC environment.

Users are advised to follow the installation guidance as provided by Microsoft.

When the appropriate version of SQL Server Management Studio has been installed (or if it has already been installed) will be shown in the 'Start' menu named as 'SQL Server Management Studio' and will appear under the SQL Express installation to which it is associated to. When it is opened, a window called 'Connect to Server' will be shown in the middle of the screen. In the 'Server Name' drop down select the database instance used by FIS. If you are unsure what this is, it will be shown in the 'Storage Settings' screen in FIS.



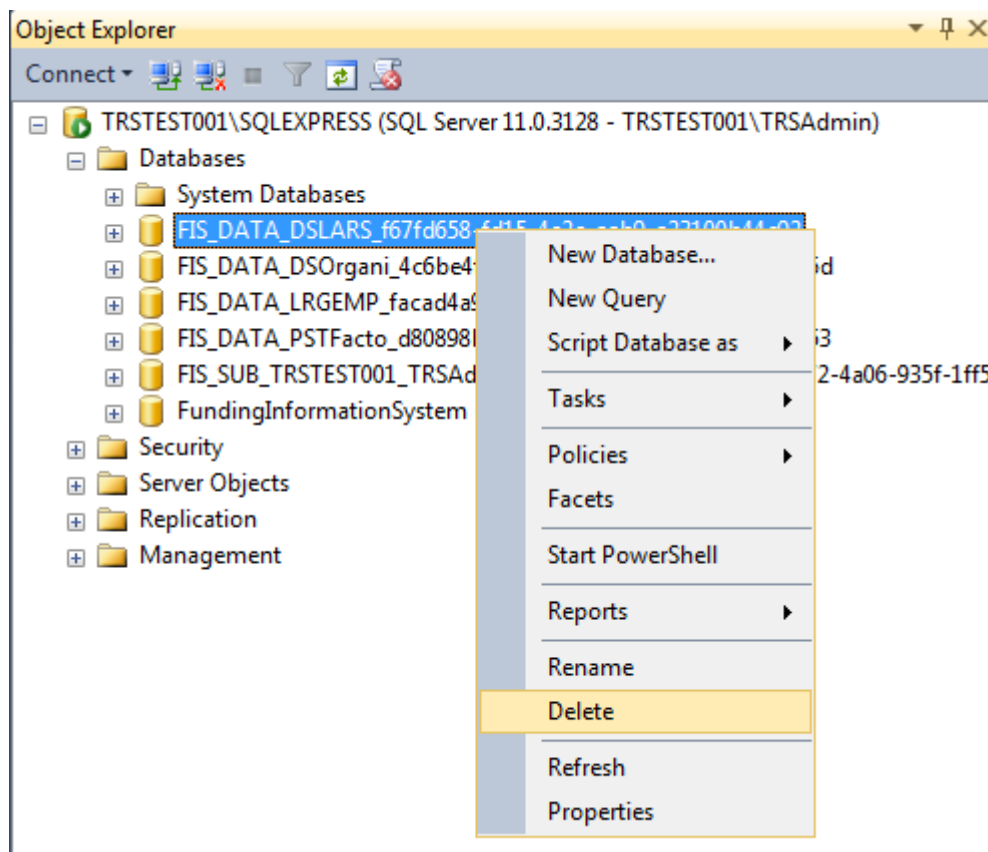
Uninstallation Guide

Funding Information System

Maximise the 'Databases' tab to show the FIS databases. The databases FIS uses are called 'FundingInformationSystem' and those whose names being 'FIS_Data...' and 'FIS_Sub...'

Each one should be removed and this is done by right-clicking its cylindrical icon or the name field and choosing 'Delete' from the options which appear. Once completed, tick the box next to 'Close existing Connections'.

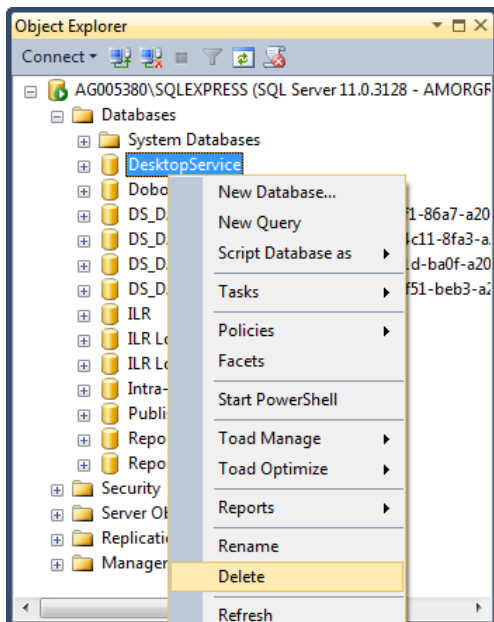
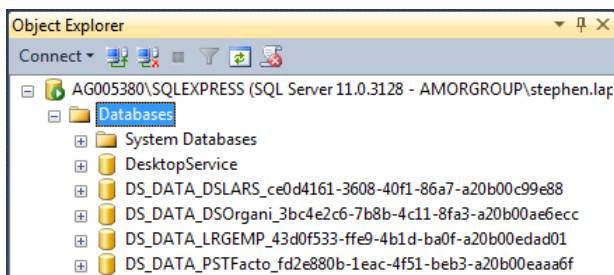
To finish the uninstallation of FIS right click





Uninstallation Guide

Funding Information System



Right click on the instance to remove and select Delete. In the next screen confirm this action.

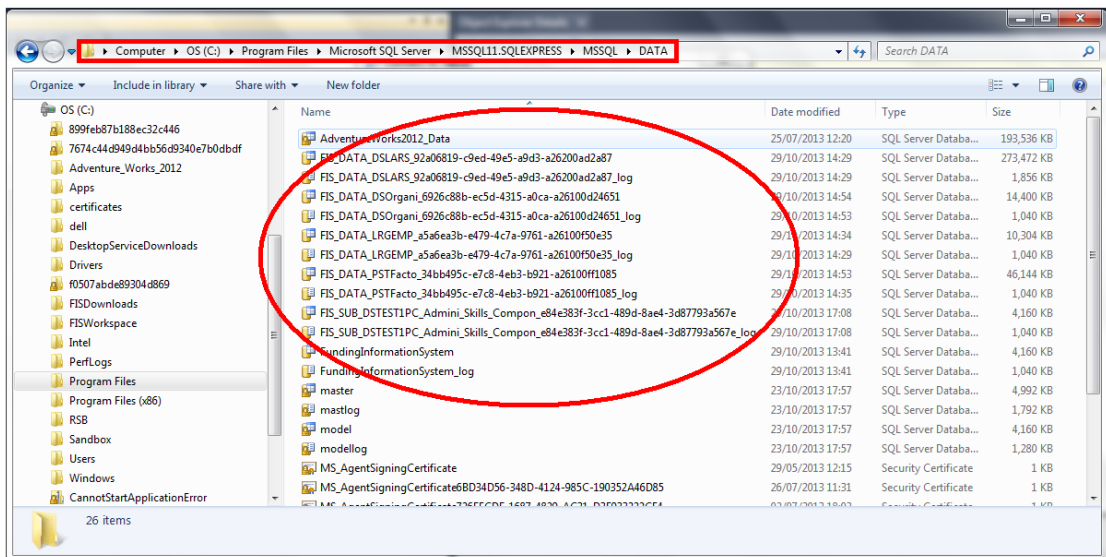


Uninstallation Guide

Funding Information System

3. Remove the resource data files used by SQL Express

The SQL Express used by FIS also has a data store of '.mdf' files. In the SQL Express root folders is a folder named 'Data'. There are files within this folder which SQL Express presents as databases. They have the same names as the databases removed earlier and each has a supplementary file with the extension '.log'. All of these have to be removed to complete the uninstallation of FIS.





Uninstallation Guide

Funding Information System

Glossary

Term	Description
Check for Updates	The update facility used by FIS to obtain new resource files such as reference data sets and component sets.
Component Set	A set of resource modules that contain data validation, funding calculation and derived variable calculation business rules. Used by FIS to generate enriched data based on the imported ILR data.
Data Provider	The identifier of the organisation for whom the imported ILR data pertains. This is most likely to be a college or other learning provider.
Data Set	Tables of referential factors used by the component set business rule modules when generating values. In FIS these are: DSOrganisation – Factors assigned to each organisation for the purpose of funding calculation, used by the funding calculation business rules. LRG-EMP – Reference table that identifies the 'large employer' status of organisations used in the 'Employer_ID' field of the imported ILR



Uninstallation Guide

Funding Information System

	<p>data.</p> <p>PST Factor 13-14 – Area Cost and Disadvantage Uplift factors based upon Widening Participation indexes and Disadvantage uplift factors based upon Multiple Deprivation indexes UK geographical wards assigned to relative Postcodes.</p> <p>DS LARS – Learning Aims Reference (LARS) data</p>
Database Instance	<p>A database entity, which holds all relevant data and structures for a particular model, in this case the FIS and its Component Sets.</p>
Default Selection	<p>This functionality records which procedures are selected at the time and recalls those settings when FIS is opened.</p>
DES	<p>Data Exchange Service. This is the data collections portal where Learning Providers will submit their ILR Data File submissions.</p>
Landing Page	<p>The web page from which Prerequisite and FIS installation is run.</p>
Prerequisite	<p>The prerequisite software required for FIS to run is .NET Framework 4.5 and SQL Express (2008r2 as a minimum). There is an installation service available online as part of the FIS installation process which allows users</p>



Uninstallation Guide

Funding Information System

	to install .NET Framework 4.5 and SQL Express 2012 (database only)
Procedure	A discrete area of functionality selected by the user and called by FIS during an execution cycle. For example “Import, amalgamate and validate an ILR Submission” or “View Learner Data”. These can be run individually or in series, the sequence of procedures shown in the FIS front screen cannot be altered. Some procedures are dependent on others such as procedures that output funding reports are dependent on the procedure “Perform Funding and Derived Variable Calculations”
SQL Express	A free to download and distribute Relational Database Management System produced by Microsoft. This provides the back-end database to FIS.
SQL Express Management Studio	A set of GUI tools that can be installed alongside or with SQL Express to allow management of an SQL instance via script and graphical editors. This allows users to configure, manage and administrate the database.
Template	A set of activities that FIS will undertake recorded as an XML file and called during the Command Line functionality.



Skills Funding
Agency

Uninstallation Guide

Funding Information System

Workspace	The folder directory to which FIS outputs are sent during execution.
-----------	--