

Naval Service Monthly Personnel Situation Report



1st December 2013

Produced By:

Defence Statistics (Navy)

Revisions to historic data from the Joint Personnel Administration System

Defence Statistics has recently undertaken a major review of all Armed Forces personnel data from the Joint Personnel Administration system. This has resulted in changes to the strengths, intake and outflow data reported in this publication, affecting the following periods:

Flow statistics from the period ending 31 March 2009 to the period ending 31 October 2011 and strength statistics from 1 May 2009 to 1 November 2011 (inclusive).

Changes of around 20 per month have been made to the headline strengths. Changes to monthly outflow figures range from fewer than 10 to around 50.

The revised data are considered finalised and are therefore no longer marked provisional. Data for 1 November 2011 and subsequent dates are considered final.

**This Naval Service Monthly Personnel
Situation Report is published by
Defence Statistics (Navy)**

We welcome feedback on the report.

**Please contact the Statistician
responsible for the report**

Email

DefStrat-Stat-Navy-Hd@mod.uk



Ministry of Defence

Naval Service Monthly Personnel Situation Report

Contents

1st December 2013

- 1 **Current & Historic Trained Strengths**
 - a Trained Strengths and Liability
 - b Summary Strengths by Service and Arm
 - c/d Graphs of Trained Strengths and Liability for the Naval Service

- 2 **Trained Strengths by Branch, Specialisation and Arm**
 - a Trained Regular Officer Strengths and Liability by Branch, Specialisation and Arm
 - b Trained Regular Rating Strengths and Liability by Branch, Specialisation and Arm
 - c Trained FTRS Officer Strengths by Branch, Specialisation and Arm
 - d Trained FTRS Rating Strengths by Branch, Specialisation and Arm

- 3 **Trained Regular Strengths by Branch and Paid Rank**
 - a Trained Regular Officer Strengths and Liability
 - b Trained Regular Rating Strengths and Liability
 - c Graphs of Trained Regular Officer Surplus/Deficit by Paid Rank
 - d Graphs of Trained Regular Rating Surplus/Deficit by Paid Rank
 - e Trained FTRS Officer Strengths by Branch and Paid Rank
 - f Trained FTRS Rating Strengths by Branch and Paid Rank

- 4 **Trained Regular Strengths by Branch, Specialisation, Arm and Paid Rank**
 - a (GS) Trained Regular Officer General Service Strengths by Branch, Specialisation, Arm and Paid Rank
 - a (SM) Trained Regular Officer Submariner Strengths by Branch, Specialisation, Arm and Paid Rank
 - a (FAA) Trained Regular Officer Fleet Air Arm Strengths by Branch, Specialisation, Arm and Paid Rank
 - b (GS) Trained Regular Rating General Service Strengths by Branch, Specialisation, Arm and Paid Rank
 - b (SM) Trained Regular Rating Submariner Strengths by Branch, Specialisation, Arm and Paid Rank
 - b (FAA) Trained Regular Rating Fleet Air Arm Strengths by Branch, Specialisation, Arm and Paid Rank

- 5 **Untrained Regular Strengths by Branch and Paid Rank**
 - a Untrained Regular Officer Strengths by Branch and Paid Rank
 - b Untrained Regular Rating Strengths by Branch and Paid Rank

- 6 **Trained Regular Strengths By Budgetary Area**

- 7 **Trained Regular Length of Service**
 - a Trained Regular Length of Service by Rank
 - b Trained Regular Officer Length of Service by Paid Rank
 - c Trained Regular Rating and Other Rank Length of Service by Paid Rank

- 8 **Trained Regular Officer and Rating Due Outflow Over next 12 months**
 - a This table has been removed from the report as of July 2013

- 9 **Trained Regular Naval Service Outflows**
 - a Trained Regular Naval Service Officer Outflows
 - b Trained Regular Naval Service Rating Outflows

- 10 **Trained Regular Voluntary Outflow**
 - a Trained Regular Officer Voluntary Outflow by Paid Rank
 - b Trained Regular Rating Voluntary Outflow by Paid Rank

- 11 **Trained Regular Promotions to Substantive Rank**
 - a Trained Regular Officer Promotions To Substantive Rank
 - b Trained Regular Rating and Other Rank Promotions To Substantive Rank

- 12 **Gains to Trained Strength**
 - a Gains to the Officer Trained Strength by Branch
 - b Gains to the Rating Trained Strength by Branch

- 13 **Trained Intake from Civil Life or Another Service**

Glossary of Terms

Naval Service Monthly Personnel Situation Report

December 2013

All data are derived from Defence Statistic's ARES2 Manpower Database. Strength data represents the position at the first of the month and flows data is movement reported during the previous calendar month.

The date of this situation report represents data as at the last day of the preceding month, i.e the January 2010 report represents data as at 31 December 2009.

Totals may not equal the sum of parts due to rounding. All numbers over 100 are rounded to the nearest 10 with numbers ending in 5 rounded to the nearest multiple of 20, to avoid bias. Numbers under 100 are rounded to the nearest 5, with numbers that would be rounded to 0 represented by '-'.

From June 2011, Liability split by Branch & Spec is taken from the relevant Planning Liability (currently PL 1-13) scaled to DP. Monthly liability figures are calculated using a straight line interpolation between the relevant PL April points (currently April 2013 and April 2014).

The Ratings "Branch" split has been changed to reflect the branch manager structure.

RM Aircrewmen are included with XAV, and RM Medical Assistants are included with Medical. Where an RM/RN total split is given, they are included with RM.

Royal Marines Officers includes RM pilots.

'No Spec' (Officers) and 'No Trade' (Ratings) cover personnel whose specialisation has not yet been assigned.

Only Table 1 includes Full Time Reservists (FTRS), unless otherwise stated.

VO exit rates are the 12 month total exits divided by the average strength (calculated as a 13 month centred rolling average).

LTAs and AWOLs have been removed from the strengths.

In the Trained Strengths tables involving branch and specialisation, Transfer Trainees have been removed from the totals.

Previously published graphs linked to future exits have been removed in line with the Data Protection Act 1998.

Naval Service Monthly Personnel Situation Report

Published by Defence Statistics (Navy)

If you have any comments or queries please contact

DefStrat-Stat-Navy-Hd@mod.uk

Summary of NATO Ranks

		Royal Navy	Royal Marines
****	OF-10	Admiral of the Fleet	
***	OF-9	Admiral	General
**	OF-8	Vice Admiral	Lieutenant General
*	OF-7	Rear Admiral	Major General
	OF-6	Commodore	Brigadier
	OF-5	Captain	Colonel
	OF-4	Commander	Lt Colonel
	OF-3	Lieutenant Commander	Major
	OF-2	Lieutenant	Captain
	OF-1	Sub-Lieutenant	Lieutenant/2nd Lieutenant
	OF(D)	Officer Designate	Officer Designate
	OR-9	Warrant Officer 1	Warrant Officer 1
	OR-8	Warrant Officer 2	Warrant Officer 2
	OR-7	Chief Petty Officer	Colour Sergeant
	OR-6	Petty Officer	Sergeant
	OR-5		
	OR-4	Leading Rate	Corporal
	OR-3		Lance Corporal
	OR-2	Able Rate	Marine (1st Class)
	OR-1 ¹	Ordinary Rate/Junior	Marine (2nd Class)/Junior

¹ The rank of OR-1 is now obsolete.

1a

Trained Strengths and Liability

		Apr-10	Apr-11	Apr-12	Apr-13	Jun-13	Jul-13	Aug-13	Sep-13	Oct-13	Nov-13	Dec-13
RNS Regulars		35,170	35,180	35,250	31,280	31,070	30,910	30,860	30,670	30,550	30,440	30,500
FTRS "Regulars" *		330	330	180	150	150	150	160	160	170	180	170
FTRS "Non-Regulars" *		250	250	260	250	270	270	270	280	280	290	300
Total	<i>Naval Service</i>	35,500	35,500	35,420	31,420	31,220	31,070	31,020	30,830	30,720	30,610	30,670
	Royal Navy	28,120	28,120	27,860	24,430	24,190	24,030	23,960	23,770	23,670	23,550	23,570
	Royal Marines	7,060	7,060	7,380	6,850	6,880	6,880	6,900	6,900	6,880	6,890	6,920
	FTRS "Regulars" *	330	330	180	150	150	150	160	160	170	180	170
	Liability	35,790	35,790	35,700	30,530	30,510	30,500	30,490	30,470	30,450	30,440	30,420
	Regular Surplus/Deficit	-620	-620	-450	750	560	420	380	200	90	-	80
	Regular Surplus/Deficit (%)	-1.7%	-1.7%	-1.3%	2.4%	1.8%	1.4%	1.2%	0.6%	0.3%	0.0%	0.3%
	Total Surplus/Deficit	-290	-290	-280	890	700	570	530	360	270	170	250
	Total Surplus/Deficit (%)	-0.8%	-0.8%	-0.8%	2.9%	2.3%	1.9%	1.7%	1.2%	0.9%	0.6%	0.8%
Officers		6,640	6,660	6,620	6,240	6,190	6,170	6,150	6,120	6,110	6,080	6,080
	Royal Navy (inc Careers)	5,720	5,730	5,720	5,400	5,370	5,350	5,340	5,300	5,290	5,280	5,280
	RM GS (inc Careers)	770	770	790	750	740	740	730	730	720	720	710
	RM Band	10	10	10	10	10	10	10	10	10	10	10
	Transfer Trainees	20	20	30	10	10	10	10	10	10	10	10
	FTRS "Regulars" *	120	120	80	60	60	60	60	70	70	80	70
	Liability	6,630	6,630	6,610	5,810	5,840	5,850	5,850	5,860	5,860	5,860	5,860
	Surplus/Deficit	10	30	10	420	350	320	300	260	250	220	210
	Surplus/Deficit (%)	0.2%	0.4%	0.1%	7.3%	6.0%	5.5%	5.1%	4.4%	4.3%	3.7%	3.7%
Ratings		28,860	28,850	28,800	25,190	25,030	24,900	24,860	24,710	24,610	24,530	24,590
	XR	5,680	5,680	5,530	4,720	4,630	4,620	4,590	4,550	4,540	4,520	4,530
	XSM	880	880	860	790	780	780	780	780	780	780	780
	XAV	790	790	820	730	720	700	710	700	690	690	700
	Eng GS	5,240	5,240	5,100	4,100	4,060	4,010	3,980	3,940	3,920	3,890	3,860
	Eng SM	2,140	2,140	2,150	2,060	2,050	2,030	2,040	2,020	2,000	2,010	2,000
	Air Eng	3,470	3,460	3,530	3,110	3,100	3,100	3,090	3,070	3,040	3,030	3,040
	Logistics	3,230	3,230	3,180	2,680	2,650	2,620	2,610	2,590	2,560	2,550	2,550
	Medical	1,000	1,000	980	920	920	910	920	910	920	920	900
	RM GS	5,840	5,840	6,130	5,630	5,670	5,680	5,700	5,700	5,680	5,700	5,750
	RM Band	320	320	330	340	340	340	340	340	340	340	340
	FTRS "Regulars" *	200	200	100	90	90	90	90	90	100	100	100
	Unknown	-	-	-	-	-	-	-	-	-	-	-
	Transfer Trainees	70	60	80	30	20	20	20	20	20	-	20
	Liability	29,160	29,160	29,090	24,720	24,670	24,650	24,630	24,610	24,590	24,570	24,560
	Surplus/Deficit	-310	-320	-290	470	360	240	230	100	10	-40	30
	Surplus/Deficit (%)	-1.1%	-1.1%	-1.0%	1.9%	1.4%	1.0%	1.0%	0.4%	0.1%	-0.2%	0.1%

Dec-13 Edition.

From Jan 10 and elsewhere in this document, Liability split by Officer/Rating, Branch & Spec is taken from the relevant Planning Liability (currently PL 1-13) scaled to DP. Monthly liability figures are calculated using a straight line interpolation between the relevant PL April points (currently April 13 and April 14).

*From Jun 09 in this table only, the FTRS Strength has been split into those that are counted against the Regular Liability (FTRS "Regulars"), and those that are not (FTRS "Non-Regulars").

1b Summary of Naval Service Strength by Service and Arm

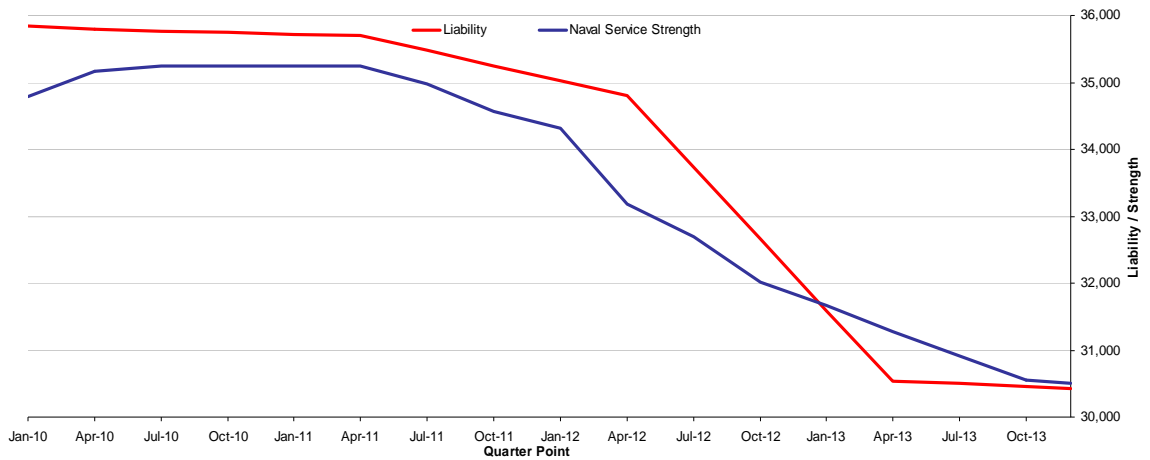
Naval Service	30,670
Royal Navy	23,710
Royal Marines	6,960

Officers Ratings		
Naval Service	6,080	24,590
Royal Navy	5,350	18,360
Royal Marines	730	6,230

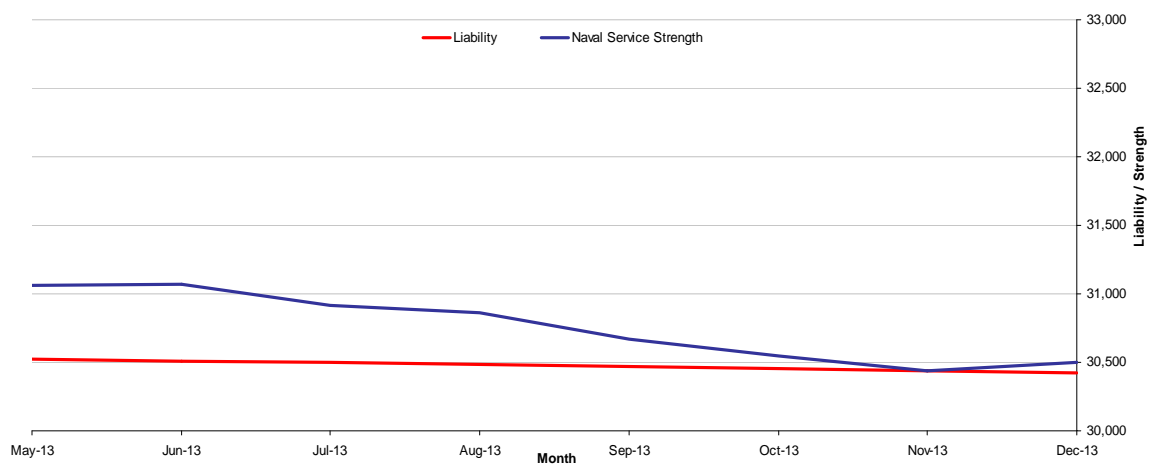
	GS	SM	FAA
Naval Service	21,370	4,180	5,120
Royal Navy	14,500	4,180	5,020
Royal Marines	6,870	-	90

The Strength shown is the total trained Regular and FTRS Regular Personnel
Naval Service figures are the Royal Navy and Royal Marines Combined

1c Historic Trained Regular RNS Strengths and Liability by Quarter



1d Recent Trained Regular RNS Strengths and Liability by Month



2a

Trained Regular Officer Strengths* and Liability** by Branch, Specialisation and Arm

Branch	Specialisation	GS	SM	FAA	Total	Liability	Surplus/Deficit
Total		3,850	890	1,260	6,000	5,860	130
Warfare		1,380	320	940	2,650	2,580	70
	Air Traffic Control	-	-	80	80		
	Aviation	-	-	40	40		
	Communicators	30	-	-	30		
	Intelligence Officer	120	-	-	120		
	Fighter Controller	40	-	-	40		
	General Service Warfare	350	-	-	350		
	HM	160	-	-	160		
	Mine Clearance Diver	70	-	-	70		
	Mine Warfare	30	-	-	30		
	Observer	-	-	330	330		
	Pilot	-	-	490	490		
	PWO	120	-	-	120		
	PWO(A)	190	-	-	190		
	PWO(C)	70	-	-	70		
	PWO(N)	70	-	-	70		
	PWO(U)	110	-	-	110		
	RN Police	20	-	-	20		
	Submariner	-	320	-	320		
	Unspecified	-	-	-	-		
Engineer		890	470	280	1,640	1,590	60
	Air Engineer	-	-	280	280		
	E(IS)	60	-	-	60		
	E(IS SM)	-	-	-	-		
	E(TM)	190	-	-	190		
	E(TM SM)	-	20	-	20		
	Marine Engineer	280	-	-	280		
	Marine Engineer (SM)	-	250	-	250		
	Weapons Engineer	360	-	-	360		
	Weapons Engineer (SM)	-	200	-	200		
	Unspecified	-	-	-	-		
Logistics		400	90	-	490	490	10
	Barrister	40	-	-	40		
	CMA	20	-	-	20		
	Logistics	340	80	-	430		
	Logistics Family Services	-	-	-	-		
Medical		260	-	-	260	200	60
Medical Services		60	-	-	60	70	-10
Dental Services		50	-	-	50	70	-10
QARNNS		60	-	-	60	90	-30
Chaplain		60	-	-	60	60	-
Royal Marines		680	-	40	720	730	-10
	Band Service	10	-	-	10		
	General Service	670	-	-	670		
	Pilot	-	-	40	40		

* The Trained Strength shown in this table does not include the Transfer Trainee Strength, hence the slightly lower figures.

** Smoothed Planning Liability 1-13 has been used and scaled to the interpolated monthly DP13 total figure.

Dec-13 Edition.

2b

Trained Regular Rating Strengths* and Liability** by Branch, Specialisation and Arm

Branch	Specialisation	GS	SM	FAA	Total	Liability	Surplus/Deficit
Total		17,390	3,250	3,830	24,470	24,560	-90
XR		4,440	-	90	4,530	4,710	-180
	WS	420	-	-	420	-	-
	WS(AWT)	350	-	-	350	-	-
	WS(AWW)	320	-	-	320	-	-
	WS(UW)	260	-	-	260	-	-
	WS(EW)	360	-	-	360	-	-
	CIS	740	-	-	740	-	-
	HM	20	-	-	20	-	-
	HM(H)	90	-	-	90	-	-
	HM(M)	-	-	90	90	-	-
	Mine Warfare	300	-	-	300	-	-
	Diver	340	-	-	340	-	-
	Seaman Specialist	610	-	-	610	-	-
	Weapons Analyst	~	-	-	~	-	-
	PT	200	-	-	200	-	-
	RN Police	230	-	-	230	-	-
	CT	230	-	-	230	-	-
	Unspecified	-	-	-	-	-	-
XSM		-	780	-	780	760	20
	Coxswain (SM)	-	30	-	30	-	-
	WS(SSM)	-	310	-	310	-	-
	WS(TSM)	-	220	-	220	-	-
	CISSM	-	220	-	220	-	-
XAV		-	-	700	700	780	-80
	Aircrewman	-	-	100	100	-	-
	NA(AC)	-	-	120	120	-	-
	NA(AH)	-	-	380	380	-	-
	NA(PHOT)	-	-	60	60	-	-
	RM Aircrewman	-	-	50	50	-	-
	Unspecified	-	-	-	-	-	-
Engineer General Service		3,860	-	-	3,860	3,970	-110
	MEM	180	-	-	180	-	-
	WEM	50	-	-	50	-	-
	ET(ME)	2,180	-	-	2,180	-	-
	ET(WE)	1,460	-	-	1,460	-	-
	ETS	~	-	-	~	-	-
	Unspecified	-	-	-	-	-	-
Engineer Submariner		-	2,000	-	2,000	1,980	30
	ET(MESM)	-	1,170	-	1,170	-	-
	ET(WESM)	-	820	-	820	-	-
	MEM	-	20	-	20	-	-
	WEM	-	~	-	~	-	-
Air Engineer		-	-	3,040	3,040	2,950	90
	AEA	-	-	120	120	-	-
	AEM	-	-	150	150	-	-
	AET	-	-	2,640	2,640	-	-
	NA(SE)	-	-	140	140	-	-
Logistics		2,160	380	-	2,550	2,470	70
	Caterer	150	20	-	170	-	-
	Chef	480	120	-	600	-	-
	Family Service	30	-	-	30	-	-
	Steward	320	80	-	400	-	-
	Supply Chain	500	100	-	600	-	-
	Writer	680	70	-	760	-	-
	Unspecified	-	-	-	-	-	-
Medical		820	80	-	900	940	-40
	Dental Hyg	10	-	-	10	-	-
	Dental SA	90	-	-	90	-	-
	Med Assist	480	80	-	560	-	-
	Med Tech	20	-	-	20	-	-
	Naval Nurse	170	-	-	170	-	-
	RM Med Assist	60	-	-	60	-	-
	Unspecified	-	-	-	-	-	-
Marines (excl MA & Acmn)		6,090	-	-	6,090	5,990	100
	Band	270	-	-	270	-	-
	Bugler	70	-	-	70	-	-
	General Service	5,750	-	-	5,750	-	-

* The Trained Strength shown in this table does not include the Transfer Trainee Strength, hence the slightly lower figures.

** Smoothed Planning Liability 1-13 has been used and scaled to the interpolated monthly DP13 total figure.

2c

Trained FTRS Officer Strengths by Branch, Specialisation and Arm

Branch	Specialisation	GS	SM	FAA	Total
Total		110	10	20	130
Warfare		30	10	10	60
	Air Traffic Control	-	-	~	~
	Aviation	-	-	~	~
	Communications	~	-	-	~
	Intelligence Officer	-	-	-	-
	Fighter Controller	-	-	-	-
	General Service Warfare	10	-	-	10
	HM	~	-	-	~
	Mine Clearance Diver	~	-	-	~
	Mine Warfare	10	-	-	10
	Observer	-	-	~	~
	Pilot	-	-	10	10
	PWO	~	-	-	~
	PWO(A)	10	-	-	10
	PWO(C)	~	-	-	~
	PWO(N)	-	-	-	-
	PWO(U)	10	-	-	10
	RN Police	-	-	-	-
	Submariner	-	10	-	10
	Unspecified	~	-	-	~
Engineer		10	~	~	10
	Air Engineer	-	-	~	~
	E(IS)	~	-	-	~
	E(IS SM)	-	-	-	-
	E(TM)	~	-	-	~
	E(TM SM)	-	-	-	-
	Marine Engineer	-	-	-	-
	Marine Engineer (SM)	-	~	-	~
	Weapons Engineer	~	-	-	~
	Weapons Engineer (SM)	-	~	-	~
	Unspecified	-	-	-	-
Logistics		10	-	-	10
	Barrister	-	-	-	-
	CMA	-	-	-	-
	Logistics	10	-	-	10
	Logistics Family Services	-	-	-	-
Medical		-	-	-	-
Medical Services		-	-	-	-
Dental Services		-	-	-	-
QARNNS		~	-	-	~
Chaplain		~	-	-	~
Careers		~	-	-	~
Royal Marines		10	-	~	10
	Band Service	-	-	-	-
	General Service	10	-	-	10
	Pilot	-	-	~	~
RNR		30	-	-	30
RMR		-	-	-	-

2d

**Trained FTRS Rating Strengths by Branch,
Specialisation and Arm**

Branch	Specialisation	GS	SM	FAA	Total
Total		290	40	10	340
XR		60	-	-	60
	WS	-	-	-	-
	WS(AWT)	-	-	-	-
	WS(AWW)	10	-	-	10
	WS(UW)	-	-	-	-
	WS(EW)	-	-	-	-
	CIS	10	-	-	10
	HM	-	-	-	-
	HM(H)	-	-	-	-
	HM(M)	-	-	-	-
	Mine Warfare	-	-	-	-
	Diver	-	-	-	-
	Seaman Specialist	20	-	-	20
	Weapons Analyst	-	-	-	-
	PT	-	-	-	-
	RN Police	10	-	-	10
	CT	-	-	-	-
	Unspecified	-	-	-	-
XSM		-	-	-	-
	Coxswain (SM)	-	-	-	-
	WS(SSM)	-	-	-	-
	WS(TSM)	-	-	-	-
	CISSM	-	-	-	-
XAV		-	-	-	-
	Aircrewman	-	-	-	-
	NA(AC)	-	-	-	-
	NA(AH)	-	-	-	-
	NA(PHOT)	-	-	-	-
	RM Aircrewman	-	-	-	-
	Unspecified	-	-	-	-
Engineer General Service		-	-	-	-
	MEM	-	-	-	-
	WEM	-	-	-	-
	ET(ME)	-	-	-	-
	ET(WE)	-	-	-	-
	ETS	-	-	-	-
	Unspecified	-	-	-	-
Engineer Submariner		-	30	-	30
	ET(MESM)	-	20	-	20
	ET(WESM)	-	10	-	10
	MEM	-	-	-	-
	WEM	-	-	-	-
Air Engineer		-	-	-	-
	AEA	-	-	-	-
	AEM	-	-	-	-
	AET	-	-	-	-
	NA(SE)	-	-	-	-
Logistics		10	-	-	10
	Caterer	-	-	-	-
	Chef	-	-	-	-
	Family Service	-	-	-	-
	Steward	-	-	-	-
	Supply Chain	10	-	-	10
	Writer	10	-	-	10
	Unspecified	-	-	-	-
Medical		-	-	-	-
	Dental Hyg	-	-	-	-
	Dental SA	-	-	-	-
	Med Assist	-	-	-	-
	Naval Nurse	-	-	-	-
	RM Med Assist	-	-	-	-
	Med Tech	-	-	-	-
	Unspecified	-	-	-	-
Marines (excl MA & Acmn)		50	-	-	50
	Band	-	-	-	-
	Bugler	-	-	-	-
	General Service	50	-	-	50
RNR		-	-	-	-
RMR		-	-	-	-
Careers		160	-	-	160

3a

Trained* Regular Officer Strengths and Liability** by Branch and Paid Rank***

Branch		OF7 and above	OF-6	OF-5	OF-4	OF-3	OF-2	OF-1	Total
Total	Strength	40	80	260	1,030	2,030	2,470	80	5,990
	Liability	30	70	260	980	1,920	2,610	-	5,860
	Surplus / Deficit	10	10	10	60	110	-140	80	130
Warfare	Strength	20	30	110	360	900	1,170	60	2,650
	Liability	20	30	100	360	870	1,190	-	2,580
	Surplus / Deficit	10	-	-	-	30	-20	60	70
	% Surplus / Deficit	30.4%	-5.5%	2.9%	0.8%	3.1%	-1.7%	-	2.8%
Engineer	Strength	10	20	80	290	570	680	-	1,640
	Liability	10	20	80	250	520	710	-	1,590
	Surplus / Deficit	-	-	-	50	40	-30	-	60
	% Surplus / Deficit	-11.5%	-8.5%	2.5%	19.1%	8.4%	-4.3%	-	3.7%
Logistics	Strength	-	10	20	90	160	210	10	490
	Liability	-	10	20	90	160	210	-	490
	Surplus / Deficit	-	-	-	-	-	-10	10	-
	% Surplus / Deficit	-	53.7%	1.1%	0.7%	0.2%	-3.7%	-	0.9%
Medical	Strength	-	-	20	90	100	40	-	260
	Liability	-	-	10	80	70	40	-	200
	Surplus / Deficit	-	-	-	10	40	10	-	60
	% Surplus / Deficit	2.9%	37.2%	24.6%	10.1%	53.5%	23.6%	-	28.3%
Dental	Strength	-	-	-	20	20	10	-	50
	Liability	-	-	-	20	20	20	-	70
	Surplus / Deficit	-	-	-	-	-	-10	-	-10
	% Surplus / Deficit	-	-	28.6%	-18.4%	17.6%	-61.3%	-	-19.6%
Medical Services	Strength	-	-	-	10	20	30	-	60
	Liability	-	-	-	10	20	40	-	70
	Surplus / Deficit	-	-	-	-	-	-	-	-10
	% Surplus / Deficit	-	-	2.9%	-27.0%	-6.7%	-9.7%	-	-10.8%
QARNNS	Strength	-	-	-	10	20	30	-	60
	Liability	-	-	-	10	30	50	-	90
	Surplus / Deficit	-	-	-	-	-10	-30	-	-30
	% Surplus / Deficit	-	-	-8.2%	23.7%	-26.3%	-48.9%	-	-34.5%
Chaplain	Strength	-	-	-	60	-	-	-	60
	Liability	-	-	-	60	-	-	-	60
	Surplus / Deficit	-	-	-	-	-	-	-	-
	% Surplus / Deficit	2.9%	-	-100.0%	2.7%	-	-	-	2.7%
RM General Service	Strength	10	10	30	120	230	300	10	710
	Liability	-	10	30	110	220	350	-	720
	Surplus / Deficit	see note 1	-	-	-	10	-50	10	-10
	% Surplus / Deficit	see note 1	53.5%	0.4%	0.0%	5.7%	-13.1%	-	-1.6%
RM Band	Strength	-	-	-	-	-	-	-	10
	Liability	-	-	-	-	-	-	-	10
	Surplus / Deficit	-	-	-	-	-	-	-	-
	% Surplus / Deficit	-	-	-	2.9%	2.9%	2.9%	-	2.9%
Careers/Other	Strength	-	-	-	-	-	-	-	-
	Liability	-	-	-	-	-	-	-	-
	Surplus / Deficit	-	-	-	-	-	-	-	-
	% Surplus / Deficit	-	-	-	-	-	-	-	-
Unspecified	Strength	-	-	-	-	-	-	-	-

* The Trained Strength shown in this table does not include the Transfer Trainee Strength, hence the slightly lower figures.

** Smoothed Planning Liability 1-13 has been used and scaled to the interpolated monthly DP13 total figure.

*** Figures exclude FTRS personnel in regular posts.

¹ At OF7+ RM GS Officers are assigned under the same regime as their RN counterparts, occupying common appointments where liability is attributable across the Naval Service OF7+ population.

3b Trained* Regular Rating Strengths and Liability by Branch and Paid Rank*****

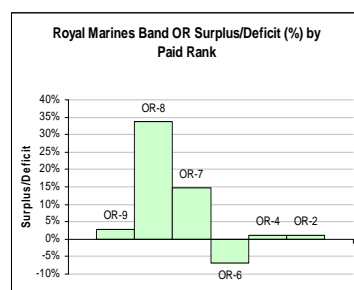
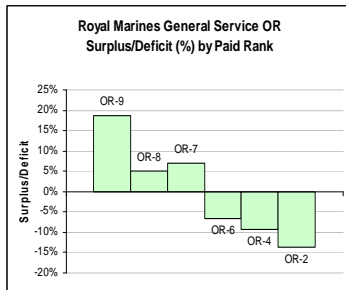
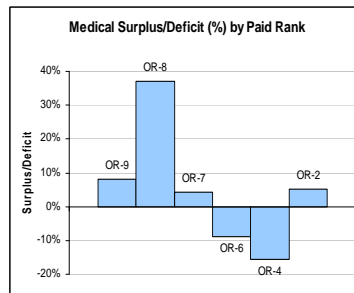
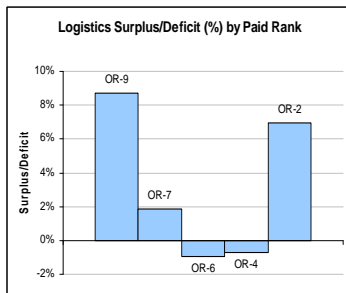
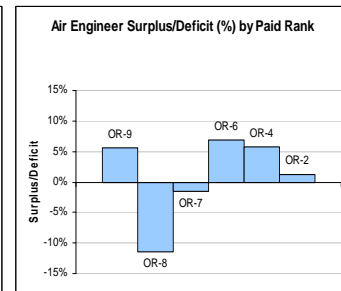
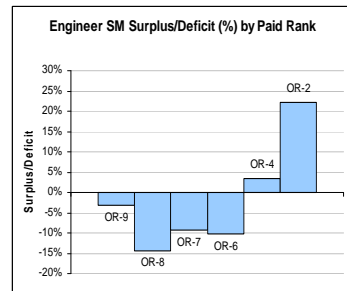
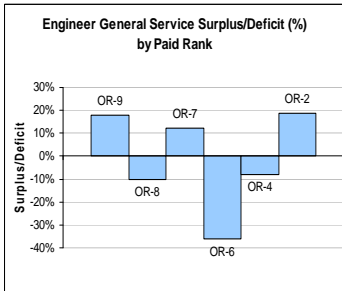
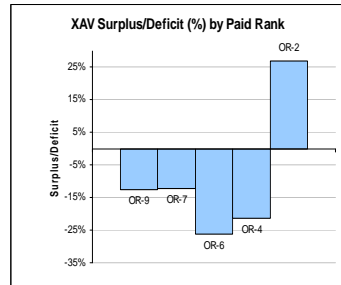
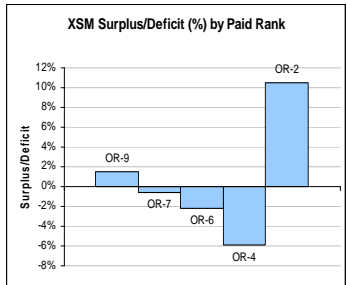
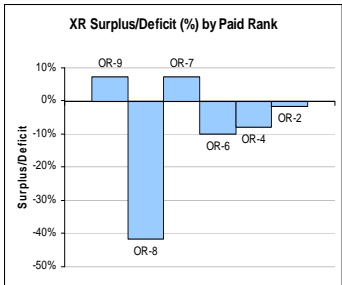
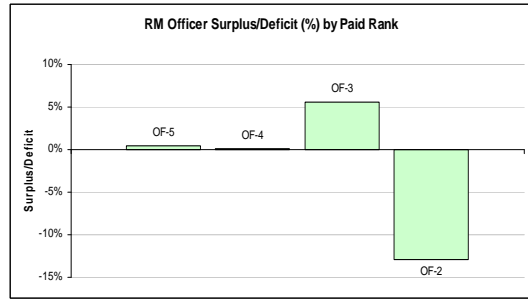
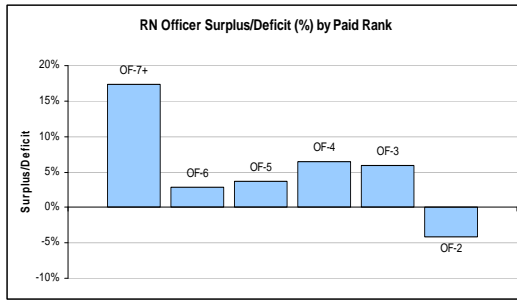
Branch		OR-9	OR-8	OR-7	OR-6	OR-4	OR-3	OR-2	Total	
Total	Strength	660	700	3,140	3,730	5,720	640	9,880	24,470	
	Liability	610	750	3,050	4,260	6,060	^{see note 2} 9,830		24,560	
	Surplus / Deficit	50	-50	90	-530	-350	640	50	-90	
	% Surplus / Deficit									
XR	Strength	150	10	580	770	1,210	-	1,810	4,530	
	Liability	140	20	540	860	1,320	-	1,830	4,710	
	Surplus / Deficit	10	-10	40	-90	-110	-	-30	-180	
	% Surplus / Deficit	7.4%	-41.7%	7.3%	-10.0%	-8.0%	-	-1.6%	-3.8%	
XSM	Strength	30	-	100	110	170	-	370	780	
	Liability	30	-	100	120	180	-	330	760	
	Surplus / Deficit	~	-	~	~	-10	-	40	20	
	% Surplus / Deficit	1.5%	-	-0.6%	-2.2%	-5.9%	-	10.5%	2.9%	
XAV	Strength	30	-	80	150	220	-	230	700	
	Liability	30	-	90	200	270	-	180	780	
	Surplus / Deficit	~	-	-10	-50	-60	-	50	-80	
	% Surplus / Deficit	-12.4%	-	-12.3%	-26.1%	-21.4%	-	27.0%	-9.9%	
EGS	Strength	150	220	750	600	770	-	1,370	3,860	
	Liability	130	240	670	930	840	-	1,160	3,970	
	Surplus / Deficit	20	-20	80	-340	-70	-	220	-110	
	% Surplus / Deficit	17.9%	-10.3%	12.3%	-35.9%	-8.0%	-	18.6%	-2.7%	
ESM	Strength	60	170	460	250	410	-	660	2,000	
	Liability	60	200	510	270	400	-	540	1,980	
	Surplus / Deficit	~	-30	-50	-30	10	-	120	30	
	% Surplus / Deficit	-3.1%	-14.4%	-9.1%	-10.2%	3.4%	-	22.2%	1.5%	
EAE	Strength	60	60	430	660	810	-	1,030	3,040	
	Liability	50	60	440	620	760	-	1,010	2,950	
	Surplus / Deficit	~	-10	-10	40	40	-	10	90	
	% Surplus / Deficit	5.6%	-11.4%	-1.5%	6.9%	5.8%	-	1.2%	3.0%	
LOGS	Strength	60	-	210	400	750	-	1,120	2,550	
	Liability	50	-	210	400	760	-	1,050	2,470	
	Surplus / Deficit	~	-	~	~	-10	-	70	70	
	% Surplus / Deficit	8.7%	-	1.9%	-1.0%	-0.7%	-	7.0%	2.9%	
MED	Strength	30	~	110	180	270	10	300	900	
	Liability	30	~	110	190	320	-	290	940	
	Surplus / Deficit	~	~	~	-20	-50	10	10	-40	
	% Surplus / Deficit	8.0%	37.1%	4.3%	-8.8%	-15.7%	0.0%	5.1%	-3.8%	
RMGS	<i>Excludes RM Med Assistant, RM Aircrewman, RM Band and RM Careers Service</i>									
	Strength	90	230	380	560	1,050	630	2,800	5,750	
	Liability	70	220	350	610	1,160	^{see note 2} 3,250		5,660	
	Surplus / Deficit	10	10	20	-40	-110	630	-440	90	
RM Band	Strength	~	10	30	50	60	-	190	340	
	Liability	~	10	30	50	60	-	180	340	
	Surplus / Deficit	~	~	~	~	~	-	~	10	
	% Surplus / Deficit	2.9%	33.7%	14.7%	-6.8%	1.1%	-	1.2%	1.9%	
Unspecified	Strength	-	-	-	-	-	-	-	-	
CAPPS	Liability	-	-	-	-	-	-	-	-	

* The Trained Strength shown in this table does not include the Transfer Trainee Strength, hence the slightly lower figures.

** Smoothed Planning Liability 1-13 has been used and scaled to the interpolated monthly DP13 total figure.

*** Figures exclude FTRS personnel in regular posts.

² Royal Marines are the only part of the Naval Service to currently contain OR3 strength. As no separate liability for OR3 is produced for the Naval Service, the liability for OR2 also includes OR3.



3e Trained Officer FTRS Strength by Branch and Paid Rank

Branch	OF7+	OF6	OF5	OF4	OF3	OF2	OF1	Total
Total	-	-	~	30	70	20	-	130
Warfare	-	-	~	20	30	~	-	60
Engineer	-	-	~	~	~	~	-	10
Logistics	-	-	~	~	10	~	-	10
Medical	-	-	-	-	-	-	-	-
Medical Services	-	-	-	-	-	-	-	-
Dental	-	-	-	-	-	-	-	-
QARNNS	-	-	-	-	~	~	-	~
Chaplain	-	-	-	~	-	-	-	~
RM General Service	-	-	~	~	~	~	-	10
RM Band	-	-	-	-	-	-	-	-
RNR	-	-	~	~	20	10	-	30
RMR	-	-	-	-	-	-	-	-
Careers/Other	-	-	-	-	-	~	-	~

Dec-13 Edition.

3f Trained Rating FTRS Strength by Branch and Paid Rank

Branch	OR9	OR8	OR7	OR6	OR4	OR3	OR2	Total
Total	30	20	120	130	20	~	20	340
XR	~	~	30	20	10	-	~	60
XSM	~	-	~	-	-	-	-	~
XAV	-	-	~	~	~	-	-	~
EGS	~	~	~	-	-	-	-	~
ESM	-	10	20	10	~	-	-	30
EAE	~	-	~	~	-	-	-	~
LOGS	~	-	10	~	~	-	-	10
MED	-	-	~	-	-	-	-	~
RM GS	-	~	10	10	10	~	10	50
<i>Excludes RM Med Assistant, RM Aircrewman, RM Band and RM Careers Service</i>								
RM Band	-	-	-	-	-	-	-	-
RNR	-	-	~	-	-	-	-	~
RMR	-	-	-	~	-	-	~	~
Career	20	10	50	80	-	-	-	160
Unspecified	-	-	-	-	-	-	-	-

Dec-13 Edition.

**Trained* Regular Officer General Service Strengths
4a (GS) by Branch and Specialisation and Paid Rank**

Branch	Specialisation	OF-7 and above	OF-6	OF-5	OF-4	OF-3	OF-2	OF-1	Total
Total		20	50	170	690	1,320	1,540	60	3,850
Warfare		10	20	60	190	480	590	40	1,380
	Communications	-	-	-	-	10	20	-	30
	Intelligence Officer	-	-	-	~	50	70	-	120
	Fighter Controller	-	-	-	-	10	30	~	40
	General Service Warfare	-	-	-	-	30	290	30	350
	HM	-	-	~	20	60	80	-	160
	Mine Clearance Diver	-	-	-	-	40	30	-	70
	Mine Warfare	-	-	-	~	~	20	-	30
	PWO	-	-	-	~	90	30	-	120
	PWO(A)	~	~	20	70	80	~	-	190
	PWO(C)	~	10	10	20	30	~	-	70
	PWO(N)	~	~	10	20	30	10	-	70
	PWO(U)	~	~	20	40	50	-	-	110
	RN Police	-	-	-	~	10	10	-	20
	Unspecified	-	-	-	-	-	-	-	-
Engineer		~	10	40	150	320	370	-	890
	E(IS)	-	-	~	10	20	20	-	60
	E(TM)	-	~	~	20	70	90	-	190
	Marine Engineer	~	~	10	60	100	110	-	280
	Weapons Engineer	-	~	20	70	120	150	-	360
	Unspecified	-	-	-	-	-	-	-	-
Logistics		~	10	20	60	130	180	10	400
	Barrister	~	~	~	10	10	10	-	40
	CMA	-	-	-	10	10	-	-	20
	Logistics	-	~	10	40	100	170	10	340
	Logistics Family Services	-	-	-	-	~	~	-	~
Medical		~	~	20	90	100	40	-	260
Medical Services		-	-	~	10	20	30	-	60
Dental Services		-	-	~	20	20	10	-	50
QARNNS		-	-	~	10	20	30	-	60
Chaplain		~	~	-	60	-	-	-	60
Other		-	-	-	-	-	-	-	-
Royal Marines		10	10	30	110	220	290	10	680
	Band Service	-	-	-	~	~	~	-	10
	General Service	10	10	30	110	210	280	10	670

* The Trained Strength shown in this table does not include the Transfer Trainee Strength, hence the slightly lower figures.

Dec-13 Edition.

**Trained* Regular Officer Submarine Strengths
4a (SM) by Branch and Specialisation and Paid Rank**

Branch	Specialisation	OF-7							Total
		and above	OF-6	OF-5	OF-4	OF-3	OF-2	OF-1	
Total		10	10	50	160	270	360	20	890
Warfare		~	~	20	50	90	140	20	320
	Submariner	~	~	20	50	90	140	20	320
Engineer		10	~	30	90	150	200	-	470
	E(IS SM)	-	-	~	~	10	~	-	20
	E(TM SM)	~	~	10	40	80	~	-	150
	Marine Engineer (SM)	~	~	20	40	60	110	-	230
	Weapons Engineer (SM)	-	-	-	-	-	80	-	80
	Unspecified	-	-	-	-	-	-	-	-
Logistics		-	~	~	30	30	20	-	90
	Barrister	-	-	-	~	~	~	-	~
	CMA	-	-	-	~	~	-	-	~
	Logistics	-	~	~	20	30	20	-	80
	Logistics Family Services	-	-	-	-	-	-	-	-
Other		-	-	-	-	-	-	-	-

* The Trained Strength shown in this table does not include the Transfer Trainee Strength, hence the slightly lower figures.

**Trained* Regular Officer Fleet Air Arm Strengths
4a (FAA) by Branch and Specialisation and Paid Rank**

Branch	Specialisation	OF-7							Total
		and above	OF-6	OF-5	OF-4	OF-3	OF-2	OF-1	
Total		~	10	40	180	440	570	~	1,260
Warfare		~	10	30	120	330	440	~	940
	Air Traffic Control	-	-	~	~	20	50	~	80
	Aviation	-	-	-	~	10	30	-	40
	Observer	~	~	10	70	120	120	~	330
	Pilot	~	~	20	50	170	240	-	490
	Unspecified	-	-	-	-	-	-	-	-
Engineer		-	~	10	50	100	120	-	280
	Air Engineer	-	~	10	50	100	120	-	280
Other		-	-	-	-	-	-	-	-
Royal Marines		-	-	~	10	20	20	-	40
General Service	Pilot	-	-	~	10	20	20	-	40

* The Trained Strength shown in this table does not include the Transfer Trainee Strength, hence the slightly lower figures.

**Trained* Regular Rating General Service Strengths
4b (GS)
by Branch and Specialisation and Paid Rank**

Branch	Specialisation	OR-9	OR-8	OR-7	OR-6	OR-4	OR-3	OR-2	Total
Total		470	480	2,030	2,480	3,990	640	7,380	17,470
Warfare		150	10	580	770	1,210	-	1,810	4,530
	WS	-	-	-	-	~	-	420	420
	WS(AWT)	20	-	70	100	160	-	10	350
	WS(AWW)	30	-	70	90	110	-	10	320
	WS(UW)	10	-	40	60	70	-	90	260
	WS(EW)	10	-	40	60	90	-	160	360
	CIS	20	-	90	120	180	-	330	740
	HM	-	-	-	-	-	-	20	20
	HM(H)	~	-	10	20	20	-	40	90
	HM(M)	~	-	10	20	30	-	30	90
	Mine Warfare	10	-	20	50	70	-	150	300
	Diver	10	-	20	50	90	-	170	340
	Seaman Specialist	10	-	40	50	140	-	370	610
	Weapons Analyst	-	-	~	-	-	-	-	~
	PT	10	-	30	60	110	-	-	200
	RN Police	10	-	40	80	90	-	-	230
	CT	10	10	100	30	50	-	20	230
	Unspecified	-	-	-	-	-	-	-	-
Engineer		150	220	750	600	770	-	1,370	3,860
	MEM	20	-	60	90	-	-	-	180
	WEM	10	-	20	20	-	-	-	50
	ET(ME)	70	120	310	300	460	-	920	2,180
	ET(WE)	50	100	350	200	310	-	450	1,460
	ETS	-	-	-	~	-	-	-	~
	Unspecified	-	-	-	-	-	-	-	-
Logistics		60	-	190	340	660	-	920	2,160
	Caterer	20	-	60	60	-	-	-	150
	Steward	-	-	-	10	110	-	200	320
	Chef	-	-	~	40	180	-	250	480
	Writer	10	-	70	120	200	-	280	680
	Supply Chain	20	-	50	90	160	-	190	500
	Family Services	-	-	10	20	-	-	-	30
Med		30	~	100	160	240	10	280	820
	Dental Hyg	-	-	~	~	10	-	-	10
	Dental SA	~	-	~	10	20	-	50	90
	Med Asst	20	-	50	80	110	-	210	480
	Naval Nurse	~	-	30	50	80	-	~	170
	RM Med Asst	-	-	~	10	10	10	30	60
	Med Techn	-	~	10	~	~	-	~	20
Other		-	-	-	-	-	-	-	-
Royal Marines		90	250	410	620	1,110	630	2,990	6,090
RM	RM Band	~	10	30	50	60	-	190	340
	RM GS	90	230	380	560	1,050	630	2,800	5,750

* The Trained Strength shown in this table does not include the Transfer Trainee Strength, hence the slightly lower figures.

**Trained* Regular Rating Submarine Strengths
4b (SM) by Branch and Specialisation and Paid Rank**

Branch	Specialisation	OR-9	OR-8	OR-7	OR-6	OR-4	OR-3	OR-2	Total
Total		100	170	600	440	700	-	1,250	3,250
Warfare		30	-	100	110	170	-	370	780
	Coxswain (SM)	10	-	20	-	-	-	-	30
	WS(SSM)	10	-	30	60	60	-	150	310
	WS(TSM)	10	-	30	20	40	-	120	220
	CJSSM	10	-	20	40	60	-	100	220
	Unspecified	-	-	-	-	-	-	-	-
Engineer		60	170	460	250	410	-	660	2,000
	MEM	-	-	20	-	-	-	-	20
	WEM	-	-	~	-	-	-	-	~
	ET(ME)	30	110	280	120	230	-	400	1,170
	ET(WE)	30	60	160	120	180	-	260	820
	Unspecified	-	-	-	-	-	-	-	-
LOGS		-	-	20	60	100	-	200	380
	Caterer	-	-	10	10	-	-	-	20
	Steward	-	-	-	~	20	-	50	80
	Chef	-	-	~	10	40	-	70	120
	Writer	-	-	~	20	20	-	40	70
	Supply Chain	~	-	10	20	20	-	40	100
	Family Services	-	-	-	-	-	-	-	-
MED		-	-	10	20	30	-	20	80
	Med Asst	~	-	10	20	30	-	20	80
Other		-	-	-	-	-	-	-	-

* The Trained Strength shown in this table does not include the Transfer Trainee Strength, hence the slightly lower figures.

**Trained* Regular Rating Fleet Air Arm Strengths
4b (FAA) by Branch and Specialisation and Paid Rank**

Branch	Specialisation	OR-9	OR-8	OR-7	OR-6	OR-4	OR-3	OR-2	Total
Total		90	60	510	810	1,020	-	1,260	3,740
Warfare		30	-	80	150	220	-	230	700
	Aircrewmen	10	-	20	40	30	-	-	100
	NA(AC)	10	-	20	30	40	-	20	120
	NA(AH)	10	-	20	40	100	-	210	380
	NA(PHOT)	~	-	10	20	30	-	-	60
	RM Aircrewmen	~	-	10	20	20	-	-	50
	Unspecified	-	-	-	-	-	-	-	-
Engineer		60	60	430	660	810	-	1,030	3,040
	AEA	-	-	120	-	-	-	-	120
	AEM	10	-	50	90	-	-	-	150
	AET	40	60	250	550	760	-	980	2,640
	NA(SE)	~	-	10	20	50	-	50	140
Other		-	-	-	-	-	-	-	-

* The Trained Strength shown in this table does not include the Transfer Trainee Strength, hence the slightly lower figures.

5a

Untrained Regular Officer Strengths by Branch and Paid Rank

	OF4+	OF3	OF2	OF1	OFD	Total
Total	-	-	230	430	170	830
Warfare	-	-	100	190	120	420
Engineer	-	-	80	80	30	200
Logistics	-	-	10	20	10	40
Medical	-	-	30	50	-	80
Medical Services	-	-	-	~	-	~
Dental	-	-	~	~	-	~
QARNNS	-	-	-	~	-	~
Chaplain	-	-	-	-	-	-
No Spec	-	-	-	-	-	-
RM General Service	-	-	-	80	-	80
RM Band	-	-	-	-	-	-
Careers/Other	-	-	-	-	-	-

Dec-13 Edition.

Note: Midshipmen are counted as OF-D

5b Untrained Regular Rating Strengths by Branch and Paid Rank

	OR6+	OR4	OR3	OR2	Total
Total	-	-	-	2,080	2,080
XR	-	-	-	270	270
WS	-	-	-	70	70
CIS	-	-	-	30	30
HM	-	-	-	10	10
Mine Warfare	-	-	-	30	30
Diver	-	-	-	50	50
Seaman Specialist	-	-	-	70	70
CT	-	-	-	20	20
Unspecified	-	-	-	-	-
XSM	-	-	-	70	70
WS(SSM)	-	-	-	30	30
WS(TSM)	-	-	-	10	10
CISSM	-	-	-	20	20
Unspecified	-	-	-	-	-
XAV	-	-	-	50	50
Aircrewman	-	-	-	-	-
NA(AC)	-	-	-	-	-
NA(AH)	-	-	-	50	50
NA(Phot)	-	-	-	-	-
Unspecified	-	-	-	-	-
EGS	-	-	-	220	220
ET(ME)	-	-	-	140	140
ET(WE)	-	-	-	90	90
Unspecified	-	-	-	-	-
ESM	-	-	-	190	190
ET(MESM)	-	-	-	90	90
ET(WESM)	-	-	-	100	100
Unspecified	-	-	-	-	-
EAE	-	-	-	290	290
AET	-	-	-	270	270
NA(SE)	-	-	-	20	20
Unspecified	-	-	-	-	-
LOGS	-	-	-	120	120
Chef	-	-	-	70	70
Steward	-	-	-	10	10
Supply Chain	-	-	-	20	20
Writer	-	-	-	10	10
Unspecified	-	-	-	-	-
MED	-	-	-	70	70
Dental SA	-	-	-	-	-
Med Asst	-	-	-	50	50
Naval Nurse	-	-	-	20	20
Unspecified	-	-	-	-	-
RM GS	-	-	-	730	730
RM Band	-	-	-	80	80
Band	-	-	-	60	60
Bugler	-	-	-	10	10
Unspecified	-	-	-	-	-
Unknown	-	-	-	-	-

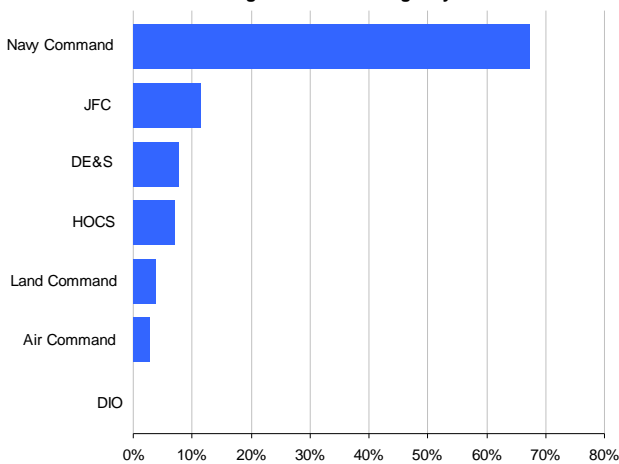
Officers

TLB										Total	% of Total Trained Strength
	OF9	OF8	OF7	OF6	OF5	OF4	OF3	OF2	OF1		
Total	~	10	30	80	260	1,030	2,030	2,470	80	5,990	100.0%
Navy Command	~	~	20	40	110	510	1,380	1,900	70	4,030	67.2%
DE&S	-	~	~	10	40	110	160	150	~	470	7.8%
HOCS	-	~	10	20	60	170	110	50	-	410	6.9%
JFC	-	~	~	10	60	210	250	170	~	700	11.6%
DIO	-	-	-	-	~	~	~	-	-	~	0.1%
Land Command	-	-	-	~	~	10	80	130	-	220	3.7%
Air Command	-	-	-	~	~	20	60	80	-	170	2.8%

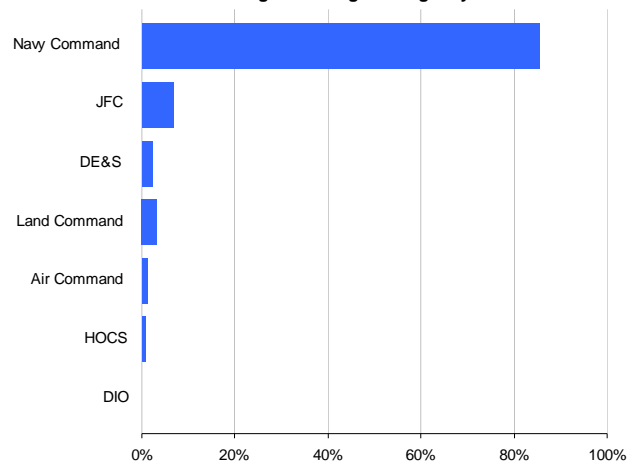
Ratings

TLB									Total	% of Total Trained Strength
	OR9	OR8	OR7	OR6	OR4	OR3	OR2			
Total	660	700	3,140	3,730	5,720	640	9,880	24,470	100.0%	
Navy Command	500	570	2,340	2,990	4,870	510	9,100	20,880	85.3%	
DE&S	70	40	180	90	100	-	60	550	2.2%	
HOCS	10	10	70	40	50	-	20	210	0.8%	
JFC	50	50	290	300	460	110	430	1,680	6.9%	
DIO	-	-	~	-	~	-	-	~	0.0%	
Land Command	20	10	130	210	180	20	260	820	3.4%	
Air Command	10	20	120	100	60	-	10	320	1.3%	

Trained* Regular Officer Strength by TLB



Trained* Regular Ratings Strength by TLB



* The Trained Strength shown in this table does not include the Transfer Trainee Strength, hence the slightly lower figures.

7a Trained Regular Length of Service by Rank

Royal Navy Officers

Rank	Average LOS on Promotion	Current Average LOS	Average LOS on Exit				
			Overall	VO	TX	OW	
OF7+	Admiral	32.2	33.1	36.8	N/A	36.8	N/A
OF6	Commodore	30.3	31.3	35.2	35.3	36.5	35.5
OF5	Captain	26.3	29.3	32.4	32.8	33.4	N/A
OF4	Commander	20.3	23.3	26.4	26.2	28.6	29.0
OF3	Lt Commander	11.1	16.3	20.0	18.0	23.8	19.1
OF2	Lieutenant	7.5	10.5	12.1	11.9	14.1	9.2
OF1	Sub-Lieutenant	2.4	3.8	3.7	N/A	N/A	3.7
OFD	Midshipman	N/A	N/A	N/A	N/A	N/A	N/A
Overall		14.4	15.8	20.3	18.9	24.0	14.5

Royal Marine Officers

Rank	Average LOS on Promotion	Current Average LOS	Average LOS on Exit				
			Overall	VO	TX	OW	
OF7+	Major General and Above	29.4	32.8	35.7	N/A	35.7	N/A
OF6	Brigadier	26.0	29.5	24.3	N/A	N/A	N/A
OF5	Colonel	23.0	26.0	30.8	33.1	33.2	N/A
OF4	Lt Colonel	16.4	21.1	23.0	21.3	27.6	22.9
OF3	Major	11.8	14.1	13.8	12.0	21.4	11.5
OF2	Captain	6.6	10.7	11.0	10.4	7.3	13.9
OF1	Lieutenant	2.2	4.3	2.0	N/A	N/A	2.0
Overall		9.4	14.6	17.6	14.7	22.6	13.3

Royal Navy Ratings

Rank	Average LOS on Promotion	Current Average LOS	Average LOS on Exit					
			Overall	VO	TX	OW	PTO	
OR-9	Warrant Officer 1st Class	26.1	28.9	31.4	29.4	33.2	28.0	N/A
OR-8	Warrant Officer 2nd Class	21.2	25.4	26.5	26.2	27.1	28.1	23.3
OR-7	Chief Petty Officer	16.2	20.3	22.8	21.1	25.0	22.2	16.1
OR-6	Petty Officer	12.4	16.4	19.8	18.3	22.4	17.3	12.2
OR-4	Leading Hand	7.0	10.4	13.9	11.6	21.3	12.0	6.8
OR-2	Able Rating	N/A	4.6	6.1	5.6	11.2	5.1	4.7
Overall		11.7	11.6	14.8	12.3	23.2	9.2	13.0

Royal Marine Ratings

Rank	Average LOS on Promotion	Current Average LOS	Average LOS on Exit					
			Overall	VO	TX	OW	PTO	
OR-9	Warrant Officer 1st Class	24.0	26.9	26.8	23.1	30.4	27.2	N/A
OR-8	Warrant Officer 2nd Class	21.1	23.5	25.8	26.5	26.5	22.5	25.6
OR-7	Colour Sergeant	16.4	19.9	24.0	24.7	25.5	21.7	18.9
OR-6	Sergeant	12.3	14.7	18.9	19.6	20.6	16.9	15.0
OR-4	Corporal	7.9	10.0	13.8	11.7	21.8	12.7	11.4
OR-3	Lance Corporal	N/A	6.4	N/A	N/A	N/A	N/A	N/A
OR-2	Marine	N/A	4.4	7.2	6.5	10.4	8.0	4.2
Overall		11.9	8.9	10.8	8.6	19.3	10.0	12.4

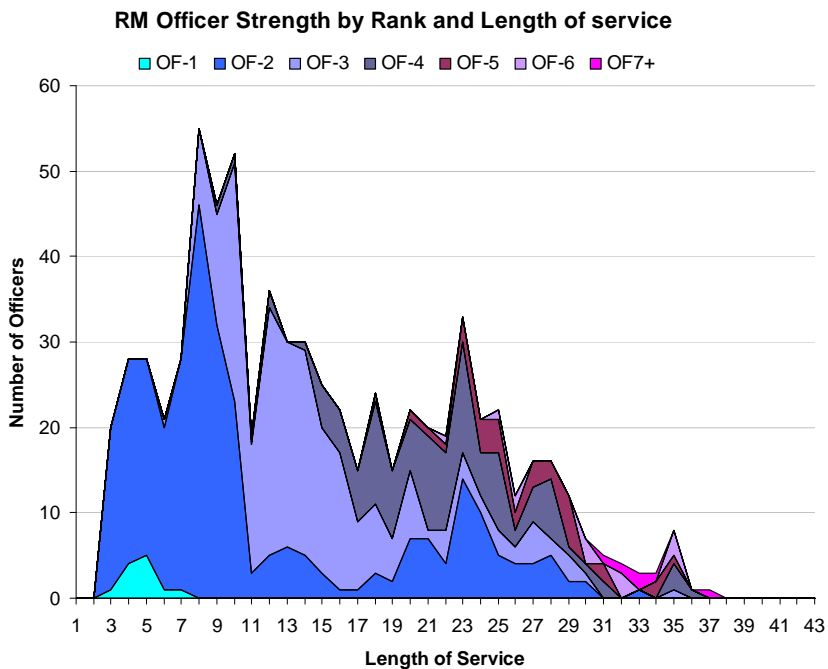
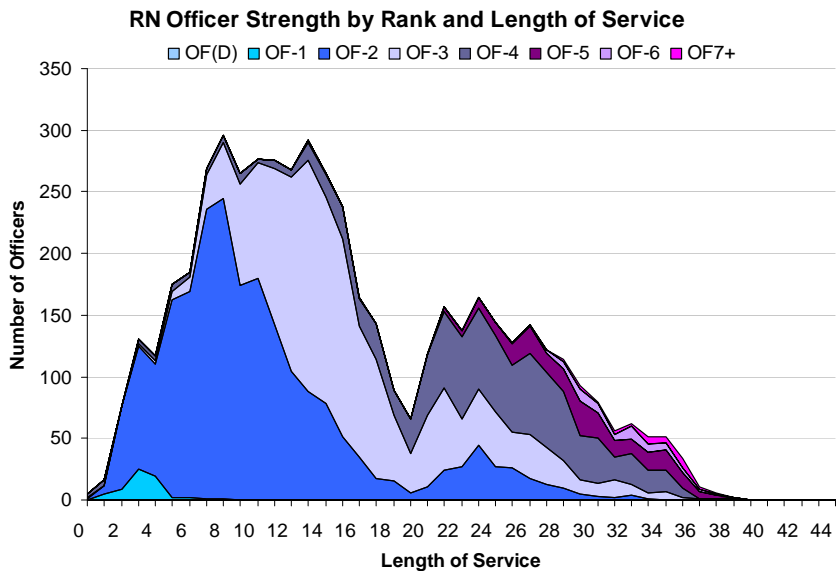
Notes

- 1 Flows data are for the last 12 months
- 2 LOS is taken from entry into the Naval Service
- 3 RN Rating and RM Other Rank exits include Promotion to Officer
- 4 Paid rank has been used for the current average LOS, but all other calculations feature substantive rank

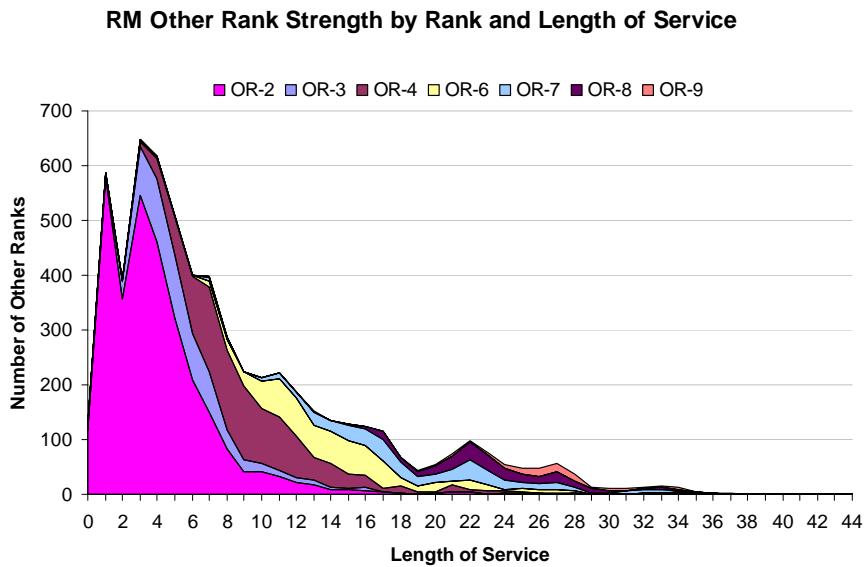
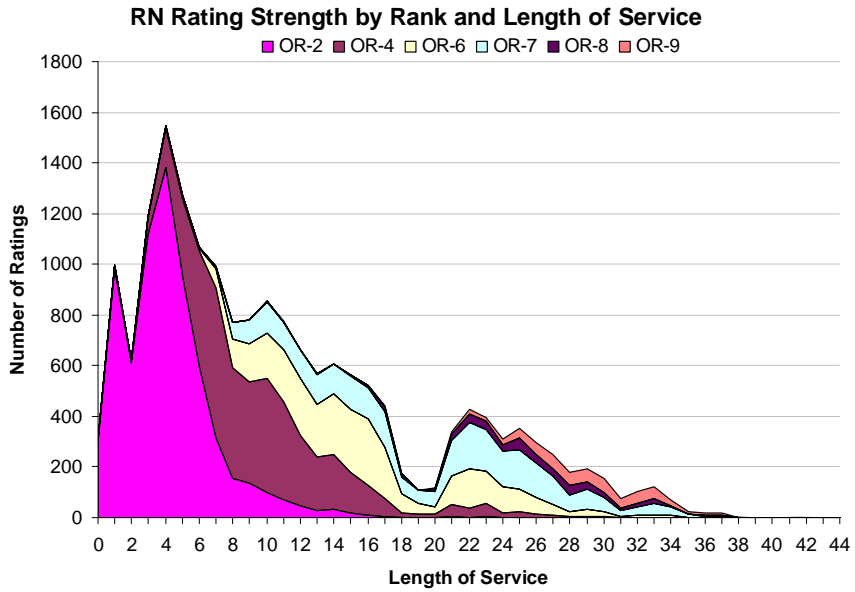
Key

- VO Voluntary Outflow
 TX Time Expiry
 OW Other Wastage
 PTO Promotion to Officer

7b Trained Regular Officer Length of Service by Paid Rank



7c Trained Regular RN Rating and RM Other Ranks Length of Service by Paid Rank



	2009/2010		2010/2011		2011/2012		2012/2013		12 Mths to 1st Dec 13		Actual Nov 13
	Nos.	%	Nos.	%	Nos.	%	Nos.	%	Nos.	%	
Total Officers	370	5.7%	390	6.0%	510	7.9%	540	8.5%	540	8.8%	40
Royal Navy Officers											
Total	330	5.7%	340	6.0%	450	8.0%	460	8.3%	470	8.7%	40
Voluntary Outflow	200	3.4%	170	2.9%	180	3.2%	200	3.7%	220	4.1%	20
Other Wastage	20	0.4%	30	0.5%	40	0.7%	40	0.7%	40	0.7%	-
Time Expiry	110	1.9%	150	2.6%	170	3.0%	150	2.7%	160	2.9%	10
Redundancy	-	0.0%	-	0.0%	60	1.1%	70	1.2%	50	0.9%	-
Royal Marine Officers											
Total	40	5.2%	50	6.2%	60	7.6%	80	10.5%	70	9.7%	10
Voluntary Outflow	20	3.3%	20	2.4%	20	3.0%	30	4.1%	40	4.9%	10
Other Wastage	10	0.8%	-	0.6%	10	1.0%	10	1.7%	10	1.3%	-
Time Expiry	10	1.1%	20	3.2%	30	3.3%	20	2.9%	10	1.6%	-
Redundancy	-	0.0%	-	0.0%	-	0.3%	10	1.8%	10	1.9%	-
Warfare											
Total	140	5.3%	150	5.4%	200	7.3%	190	7.0%	220	8.1%	20
Voluntary Outflow	90	3.2%	70	2.6%	80	3.0%	80	3.0%	100	3.7%	10
Other Wastage	10	0.3%	10	0.4%	20	0.8%	20	0.7%	20	0.7%	-
Time Expiry	50	1.8%	70	2.4%	80	2.8%	70	2.7%	80	3.1%	10
Redundancy	-	0.0%	-	0.0%	20	0.7%	20	0.5%	20	0.9%	-
Engineer											
Total	130	6.8%	130	6.9%	140	7.7%	150	8.6%	150	9.0%	10
Voluntary Outflow	70	3.9%	70	3.7%	60	3.2%	90	5.0%	90	5.6%	10
Other Wastage	10	0.4%	10	0.3%	10	0.6%	10	0.6%	10	0.5%	-
Time Expiry	50	2.5%	50	2.9%	50	2.9%	50	2.8%	50	2.9%	-
Redundancy	-	0.0%	-	0.0%	20	1.0%	-	0.2%	-	0.0%	-
Logistics											
Total	30	4.8%	30	5.6%	60	10.1%	70	12.7%	60	10.9%	-
Voluntary Outflow	20	3.6%	20	3.1%	20	2.7%	10	2.6%	20	3.2%	-
Other Wastage	-	0.5%	-	0.9%	-	0.3%	-	0.7%	-	1.0%	-
Time Expiry	-	0.7%	10	1.6%	20	2.7%	10	1.3%	10	1.4%	-
Redundancy	-	0.0%	-	0.0%	20	4.3%	40	8.0%	30	5.4%	-
Medical											
Total	10	3.9%	20	6.3%	20	8.5%	30	10.3%	20	8.7%	-
Voluntary Outflow	10	2.2%	10	2.1%	10	3.5%	10	3.3%	10	2.3%	-
Other Wastage	-	0.0%	-	1.4%	-	0.7%	-	1.8%	-	0.4%	-
Time Expiry	-	1.8%	10	2.8%	10	4.3%	10	4.0%	10	3.8%	-
Redundancy	-	0.0%	-	0.0%	-	0.0%	-	1.1%	10	2.3%	-
Dental Services											
Total	-	3.4%	-	6.7%	-	5.2%	-	6.9%	10	10.9%	-
Voluntary Outflow	-	3.4%	-	3.3%	-	1.7%	-	1.7%	-	1.8%	-
Other Wastage	-	0.0%	-	0.0%	-	0.0%	-	0.0%	-	0.0%	-
Time Expiry	-	0.0%	-	3.3%	-	3.5%	-	1.7%	-	5.5%	-
Redundancy	-	0.0%	-	0.0%	-	0.0%	-	3.5%	-	3.6%	-
Medical Services											
Total	-	3.2%	10	12.5%	10	13.8%	-	8.3%	-	6.6%	-
Voluntary Outflow	-	3.2%	-	3.1%	-	7.6%	-	5.0%	-	6.6%	-
Other Wastage	-	0.0%	-	1.6%	-	0.0%	-	1.7%	-	0.0%	-
Time Expiry	-	0.0%	-	7.8%	-	6.1%	-	1.7%	-	0.0%	-
Redundancy	-	0.0%	-	0.0%	-	0.0%	-	0.0%	-	0.0%	-
QARNNS											
Total	10	8.5%	-	3.8%	10	9.3%	10	10.1%	10	15.2%	-
Voluntary Outflow	-	3.6%	-	1.3%	-	4.0%	10	8.6%	-	4.6%	-
Other Wastage	-	2.4%	-	2.5%	-	1.3%	-	0.0%	-	6.1%	-
Time Expiry	-	2.4%	-	0.0%	-	4.0%	-	1.4%	-	4.6%	-
Redundancy	-	0.0%	-	0.0%	-	0.0%	-	0.0%	-	0.0%	-
Chaplain											
Total	-	7.8%	-	4.6%	10	17.0%	-	5.3%	-	3.5%	-
Voluntary Outflow	-	4.7%	-	0.0%	-	6.8%	-	1.8%	-	0.0%	-
Other Wastage	-	0.0%	-	1.5%	-	0.0%	-	0.0%	-	0.0%	-
Time Expiry	-	3.1%	-	3.1%	10	10.2%	-	3.5%	-	3.5%	-
Redundancy	-	0.0%	-	0.0%	-	0.0%	-	0.0%	-	0.0%	-
Other / No Spec *											
Total	-	N/A	-	N/A	-	N/A	-	N/A	-	N/A	-
Voluntary Outflow	-	N/A	-	N/A	-	N/A	-	N/A	-	N/A	-
Other Wastage	-	N/A	-	N/A	-	N/A	-	N/A	-	N/A	-
Time Expiry	-	N/A	-	N/A	-	N/A	-	N/A	-	N/A	-
Redundancy	-	N/A	-	N/A	-	N/A	-	N/A	-	N/A	-
RM GS											
Total	40	5.1%	50	6.3%	60	7.6%	80	10.4%	70	9.5%	10
Voluntary Outflow	20	3.1%	20	2.5%	20	3.1%	30	4.1%	30	4.6%	10
Other Wastage	10	0.9%	-	0.6%	10	1.0%	10	1.6%	10	1.4%	-
Time Expiry	10	1.1%	20	3.2%	20	3.2%	20	2.9%	10	1.6%	-
Redundancy	-	0.0%	-	0.0%	-	0.3%	10	1.8%	10	1.9%	-
RM BS											
Total	-	17.8%	-	0.0%	-	0.0%	-	16.9%	-	25.6%	-
Voluntary Outflow	-	17.8%	-	0.0%	-	0.0%	-	8.5%	-	25.6%	-
Other Wastage	-	0.0%	-	0.0%	-	0.0%	-	8.5%	-	0.0%	-
Time Expiry	-	0.0%	-	0.0%	-	0.0%	-	0.0%	-	0.0%	-
Redundancy	-	0.0%	-	0.0%	-	0.0%	-	0.0%	-	0.0%	-
Career *											
Total	-	N/A	-	N/A	-	N/A	-	N/A	-	N/A	-
Voluntary Outflow	-	N/A	-	N/A	-	N/A	-	N/A	-	N/A	-
Other Wastage	-	N/A	-	N/A	-	N/A	-	N/A	-	N/A	-
Time Expiry	-	N/A	-	N/A	-	N/A	-	N/A	-	N/A	-
Redundancy	-	N/A	-	N/A	-	N/A	-	N/A	-	N/A	-

	2009/2010		2010/2011		2011/2012		2012/2013		12 Mths to 1st Dec 13		Actual Nov 13
	Nos.	%	Nos.	%	Nos.	%	Nos.	%	Nos.	%	
Total Ratings	2,260	8.0%	2,450	8.5%	3,360	12.0%	3,290	12.7%	2,920	11.7%	200
Royal Navy Ratings											
Total	1,780	8.1%	1,980	8.9%	2,670	12.4%	2,390	12.1%	2,380	12.6%	170
Voluntary Outflow	910	4.1%	900	4.0%	870	4.0%	1,060	5.3%	1,190	6.3%	100
Other Wastage	380	1.7%	510	2.3%	640	3.0%	410	2.1%	390	2.1%	20
Time Expiry	410	1.9%	490	2.2%	510	2.4%	530	2.7%	650	3.4%	50
Promotion to Officer	80	0.4%	90	0.4%	50	0.2%	50	0.2%	60	0.3%	10
Redundancy	-	0.0%	-	0.0%	590	2.8%	350	1.8%	90	0.5%	-
Royal Marine Ratings											
Total	480	7.8%	460	7.2%	690	10.6%	900	14.6%	550	9.0%	30
Voluntary Outflow	260	4.2%	240	3.8%	380	5.8%	560	9.0%	300	4.9%	20
Other Wastage	120	1.9%	100	1.6%	180	2.8%	190	3.1%	150	2.4%	10
Time Expiry	80	1.3%	100	1.6%	120	1.8%	140	2.3%	90	1.4%	-
Promotion to Officer	20	0.3%	20	0.2%	20	0.3%	10	0.2%	20	0.3%	-
Redundancy	-	0.0%	-	0.0%	-	0.0%	-	0.0%	-	0.0%	-
XR											
Total	480	8.6%	550	9.8%	660	12.2%	710	14.5%	630	13.6%	40
Voluntary Outflow	250	4.4%	270	4.7%	260	4.9%	320	6.6%	340	7.4%	20
Other Wastage	120	2.2%	140	2.5%	170	3.2%	110	2.2%	120	2.5%	-
Time Expiry	100	1.7%	130	2.3%	130	2.4%	130	2.7%	150	3.2%	10
Promotion to Officer	10	0.2%	10	0.2%	-	0.1%	10	0.2%	10	0.2%	-
Redundancy	-	0.0%	-	0.0%	90	1.6%	140	2.7%	10	0.3%	-
XSM											
Total	60	7.1%	80	8.6%	80	9.0%	80	9.4%	80	9.7%	10
Voluntary Outflow	20	2.7%	30	3.7%	30	3.7%	30	4.0%	30	4.3%	-
Other Wastage	20	1.9%	20	1.9%	20	2.0%	20	2.2%	10	1.5%	-
Time Expiry	20	2.3%	20	2.5%	30	3.3%	30	3.2%	30	3.6%	-
Promotion to Officer	-	0.2%	-	0.5%	-	0.0%	-	0.0%	-	0.3%	-
Redundancy	-	0.0%	-	0.0%	-	0.0%	-	0.0%	-	0.0%	-
XAV											
Total	60	7.5%	60	7.4%	80	9.3%	100	13.0%	100	14.4%	-
Voluntary Outflow	30	4.0%	30	3.8%	30	3.5%	20	2.6%	30	4.6%	-
Other Wastage	10	1.8%	10	1.6%	10	1.3%	10	1.8%	10	1.1%	-
Time Expiry	10	1.3%	20	1.8%	10	1.6%	20	2.0%	20	3.1%	-
Promotion to Officer	-	0.4%	-	0.2%	-	0.0%	-	0.5%	-	0.3%	-
Redundancy	-	0.0%	-	0.0%	20	2.8%	50	6.0%	40	5.3%	-
EGS											
Total	490	9.5%	480	9.2%	760	15.6%	600	14.1%	660	16.2%	60
Voluntary Outflow	250	4.8%	220	4.2%	240	5.0%	310	7.3%	400	9.9%	40
Other Wastage	100	1.9%	130	2.6%	180	3.7%	80	1.9%	90	2.3%	10
Time Expiry	120	2.2%	100	1.9%	140	2.8%	120	2.7%	150	3.7%	10
Promotion to Officer	20	0.5%	30	0.5%	20	0.4%	10	0.3%	10	0.3%	-
Redundancy	-	0.0%	-	0.0%	180	3.8%	80	2.0%	-	0.0%	-
ESM											
Total	150	7.0%	170	8.0%	160	7.4%	200	9.5%	230	11.1%	20
Voluntary Outflow	70	3.1%	50	2.4%	60	2.7%	110	5.2%	110	5.4%	10
Other Wastage	30	1.3%	50	2.5%	40	2.1%	30	1.5%	40	2.0%	-
Time Expiry	50	2.2%	50	2.4%	50	2.4%	60	2.7%	70	3.5%	-
Promotion to Officer	10	0.3%	10	0.6%	-	0.2%	-	0.2%	-	0.2%	-
Redundancy	-	0.0%	-	0.0%	-	0.0%	-	0.0%	-	0.0%	-
EAE											
Total	230	6.9%	270	7.6%	460	13.1%	240	7.7%	270	8.7%	20
Voluntary Outflow	150	4.3%	120	3.5%	100	2.7%	110	3.3%	120	3.9%	10
Other Wastage	30	0.8%	50	1.4%	100	2.7%	50	1.6%	50	1.5%	-
Time Expiry	40	1.2%	70	2.1%	60	1.7%	70	2.2%	80	2.7%	-
Promotion to Officer	20	0.6%	20	0.5%	10	0.4%	10	0.2%	20	0.6%	-
Redundancy	-	0.0%	-	0.0%	200	5.6%	10	0.3%	-	0.0%	-

Trained Regular Naval Service Rating Outflow (continued)

	2009/2010		2010/2011		2011/2012		2012/2013		12 Mths to 1st Dec 13		Actual Nov 13
	Nos.	%	Nos.	%	Nos.	%	Nos.	%	Nos.	%	
LOGS											
Total	250	7.8%	290	8.9%	380	12.4%	340	12.2%	320	12.0%	20
Voluntary Outflow	110	3.5%	130	4.1%	110	3.7%	110	3.9%	110	4.3%	10
Other Wastage	60	2.0%	70	2.2%	90	3.0%	80	2.9%	50	2.0%	-
Time Expiry	60	2.0%	80	2.4%	80	2.4%	90	3.3%	120	4.5%	10
Promotion to Officer	10	0.3%	10	0.2%	10	0.2%	-	0.1%	10	0.3%	-
Redundancy	-	0.0%	-	0.0%	100	3.1%	60	2.1%	20	0.9%	-
MED											
Total	70	7.3%	100	10.4%	100	10.6%	120	12.5%	100	11.2%	10
Voluntary Outflow	30	3.4%	50	4.8%	40	4.2%	50	5.1%	40	4.5%	10
Other Wastage	10	1.3%	30	3.2%	30	3.3%	20	2.1%	20	1.8%	-
Time Expiry	20	1.9%	20	1.9%	20	1.9%	20	2.5%	20	2.7%	-
Promotion to Officer	10	0.7%	10	0.6%	10	0.6%	10	1.0%	-	0.5%	-
Redundancy	-	0.0%	-	0.0%	10	0.6%	20	1.8%	20	1.6%	-
Other / No Spec *											
Total	-	<i>N/A</i>	-	<i>N/A</i>	-	<i>N/A</i>	-	<i>N/A</i>	-	<i>N/A</i>	-
Voluntary Outflow	-	<i>N/A</i>	-	<i>N/A</i>	-	<i>N/A</i>	-	<i>N/A</i>	-	<i>N/A</i>	-
Other Wastage	-	<i>N/A</i>	-	<i>N/A</i>	-	<i>N/A</i>	-	<i>N/A</i>	-	<i>N/A</i>	-
Time Expiry	-	<i>N/A</i>	-	<i>N/A</i>	-	<i>N/A</i>	-	<i>N/A</i>	-	<i>N/A</i>	-
Promotion to Officer	-	<i>N/A</i>	-	<i>N/A</i>	-	<i>N/A</i>	-	<i>N/A</i>	-	<i>N/A</i>	-
Redundancy	-	<i>N/A</i>	-	<i>N/A</i>	-	<i>N/A</i>	-	<i>N/A</i>	-	<i>N/A</i>	-
RM GS											
Total	440	7.7%	430	7.2%	680	11.1%	870	15.2%	510	9.1%	30
Voluntary Outflow	250	4.4%	220	3.7%	370	6.1%	540	9.5%	290	5.1%	20
Other Wastage	100	1.7%	100	1.6%	180	2.9%	180	3.2%	140	2.5%	10
Time Expiry	70	1.3%	100	1.6%	110	1.8%	140	2.4%	70	1.3%	-
Promotion to Officer	20	0.3%	20	0.3%	20	0.3%	10	0.1%	10	0.2%	-
Redundancy	-	0.0%	-	0.0%	-	0.0%	-	0.0%	-	0.0%	-
RM BS											
Total	30	8.8%	20	6.7%	10	3.9%	20	5.3%	20	6.4%	-
Voluntary Outflow	10	2.1%	10	3.3%	10	1.8%	10	1.8%	-	1.5%	-
Other Wastage	10	3.6%	-	1.5%	-	0.3%	-	1.5%	-	1.2%	-
Time Expiry	10	2.7%	10	1.8%	10	1.8%	-	1.5%	10	3.2%	-
Promotion to Officer	-	0.3%	-	0.0%	-	0.0%	-	0.6%	-	0.6%	-
Redundancy	-	0.0%	-	0.0%	-	0.0%	-	0.0%	-	0.0%	-
Career *											
Total	-	<i>N/A</i>	-	<i>N/A</i>	-	<i>N/A</i>	-	<i>N/A</i>	-	<i>N/A</i>	-
Voluntary Outflow	-	<i>N/A</i>	-	<i>N/A</i>	-	<i>N/A</i>	-	<i>N/A</i>	-	<i>N/A</i>	-
Other Wastage	-	<i>N/A</i>	-	<i>N/A</i>	-	<i>N/A</i>	-	<i>N/A</i>	-	<i>N/A</i>	-
Time Expiry	-	<i>N/A</i>	-	<i>N/A</i>	-	<i>N/A</i>	-	<i>N/A</i>	-	<i>N/A</i>	-
Promotion to Officer	-	<i>N/A</i>	-	<i>N/A</i>	-	<i>N/A</i>	-	<i>N/A</i>	-	<i>N/A</i>	-
Redundancy	-	<i>N/A</i>	-	<i>N/A</i>	-	<i>N/A</i>	-	<i>N/A</i>	-	<i>N/A</i>	-

* No outflow as a percentage of strength is shown for Other/No Spec or Careers
Dec-13 Edition.

10a

Trained Regular Officer Voluntary Outflow Exits by Paid Rank

	2009/2010		2010/2011		2011/2012		2012/2013		12 Months to 1st Dec 13		Actual
	Nos.	%	Nos.	%	Nos.	%	Nos.	%	Nos.	%	Nov 13
Total Officers	220	3.4%	190	2.9%	200	3.1%	240	3.7%	260	4.2%	30
Royal Navy Officers											
Total	200	3.4%	170	2.9%	180	3.2%	200	3.7%	220	4.1%	20
OF9	-	-	-	-	-	-	-	-	-	-	-
OF8	-	-	-	-	-	-	-	-	-	-	-
OF7	~	4.1%	-	-	-	-	-	-	-	-	-
OF6	10	8.2%	~	6.9%	10	10.1%	10	10.2%	10	13.6%	~
OF5	20	6.0%	10	4.7%	10	5.5%	10	5.3%	10	5.9%	~
OF4	30	2.9%	40	3.4%	30	3.4%	40	4.3%	40	4.6%	10
OF3	70	3.6%	60	3.0%	70	3.7%	70	3.9%	80	4.3%	10
OF2	70	3.1%	60	2.4%	50	2.3%	70	3.1%	80	3.5%	~
OF1	-	-	-	-	~	1.1%	-	-	-	-	-
Royal Marine Officers											
Total	20	3.3%	20	2.4%	20	3.0%	30	4.1%	40	4.9%	10
OF9	-	-	-	-	-	-	-	-	-	-	-
OF8	-	-	-	-	-	-	-	-	-	-	-
OF7	-	-	-	-	-	-	-	-	-	-	-
OF6	-	-	-	-	-	-	~	27.3%	-	-	-
OF5	-	-	~	5.5%	-	-	-	-	~	2.8%	-
OF4	~	4.2%	~	3.3%	~	4.1%	10	5.1%	10	9.9%	~
OF3	~	1.9%	~	1.2%	10	3.3%	10	3.9%	10	4.8%	~
OF2	20	4.9%	10	3.1%	10	3.3%	10	4.3%	10	4.4%	~
OF1	-	-	-	-	-	-	-	-	-	-	-

Dec-13 Edition.

	2009/2010		2010/2011		2011/2012		2012/2013		12 Months to 1st Dec 13		Actual
	Nos.	%	Nos.	%	Nos.	%	Nos.	%	Nos.	%	Nov 13
Total Ratings	1,170	4.2%	1,110	3.9%	1,240	4.4%	1,610	6.2%	1,490	6.0%	110
XR											
Total	250	4.4%	270	4.7%	260	4.9%	320	6.6%	340	7.4%	20
OR9	~	2.7%	10	3.8%	10	4.8%	10	8.8%	10	5.3%	~
OR8	~	~	~	~	~	10.6%	~	13.4%	~	16.4%	~
OR7	40	5.5%	20	3.2%	30	4.6%	40	6.4%	40	5.8%	~
OR6	20	1.9%	30	2.8%	20	1.8%	40	4.4%	30	4.2%	~
OR4	40	2.9%	40	3.4%	30	2.2%	60	4.4%	70	5.8%	~
OR2	150	6.1%	170	6.7%	180	7.7%	180	8.7%	190	10.4%	10
XSM											
Total	20	2.7%	30	3.7%	30	3.7%	30	4.0%	30	4.3%	~
OR9	~	2.1%	~	4.6%	~	5.0%	~	11.5%	~	9.3%	~
OR8	~	~	~	~	~	~	~	~	~	~	~
OR7	~	3.5%	~	2.8%	~	2.9%	~	2.9%	10	6.0%	~
OR6	~	2.5%	~	3.3%	~	3.3%	~	1.6%	~	3.3%	~
OR4	~	1.1%	~	2.1%	~	2.7%	~	2.3%	~	1.8%	~
OR2	10	3.3%	20	4.8%	20	4.4%	20	5.2%	20	4.9%	~
XAV											
Total	30	4.0%	30	3.8%	30	3.5%	20	2.6%	30	4.6%	~
OR9	~	10.3%	~	8.1%	~	2.8%	~	3.1%	~	13.2%	~
OR8	~	~	~	~	~	~	~	~	~	~	~
OR7	~	4.4%	~	5.5%	10	7.7%	~	5.7%	~	2.4%	~
OR6	10	3.4%	10	5.5%	~	3.1%	~	1.9%	10	4.6%	~
OR4	10	2.5%	~	1.5%	10	2.4%	~	1.7%	10	4.1%	~
OR3	~	~	~	~	~	~	~	~	~	~	~
OR2	10	4.8%	10	3.6%	10	3.5%	10	2.9%	10	4.9%	~
EGS											
Total	250	4.8%	220	4.2%	240	5.0%	310	7.3%	400	9.9%	40
OR9	10	4.7%	10	4.9%	10	5.6%	20	12.3%	10	6.8%	~
OR8	10	4.7%	10	4.7%	20	6.9%	30	12.8%	30	14.2%	~
OR7	70	5.8%	40	3.4%	40	3.9%	50	5.5%	60	7.5%	10
OR6	40	4.1%	30	2.8%	40	4.3%	50	7.0%	70	10.4%	10
OR4	30	2.7%	40	3.9%	20	2.7%	50	5.6%	80	9.1%	~
OR2	100	5.8%	100	5.5%	110	6.9%	120	8.0%	150	11.1%	20
ESM											
Total	70	3.1%	50	2.4%	60	2.7%	110	5.2%	110	5.4%	10
OR9	~	7.0%	~	1.4%	~	5.9%	~	4.8%	~	3.3%	~
OR8	10	5.1%	~	2.2%	~	1.6%	10	4.0%	~	2.4%	~
OR7	20	3.9%	20	2.9%	10	2.5%	30	6.0%	30	6.4%	~
OR6	10	3.0%	20	3.9%	20	4.1%	30	9.0%	30	10.9%	~
OR4	10	1.7%	~	1.6%	10	1.8%	20	5.3%	20	5.2%	~
OR2	10	2.3%	10	1.6%	20	2.4%	20	2.9%	20	3.4%	~
EAE											
Total	150	4.3%	120	3.5%	100	2.7%	110	3.3%	120	3.9%	10
OR9	~	6.0%	~	4.8%	~	7.0%	~	5.5%	~	3.6%	~
OR8	~	6.5%	~	5.2%	~	5.9%	~	2.0%	~	5.5%	~
OR7	30	4.2%	30	5.2%	20	3.2%	20	3.5%	20	3.8%	~
OR6	20	3.2%	20	2.5%	20	2.1%	20	3.0%	20	2.6%	~
OR4	20	3.6%	~	0.5%	10	1.3%	20	3.1%	10	1.7%	~
OR2	60	5.1%	60	4.6%	50	3.3%	40	3.6%	70	6.2%	~

	2009/2010		2010/2011		2011/2012		2012/2013		12 Months to 1st Dec 13		Actual
	Nos.	%	Nos.	%	Nos.	%	Nos.	%	Nos.	%	Nov 13
LOGS											
Total	110	3.5%	130	4.1%	110	3.7%	110	3.9%	110	4.3%	10
OR9	-	5.0%	-	5.2%	-	5.6%	-	6.5%	-	5.2%	-
OR8	-	-	-	-	-	-	-	-	-	-	-
OR7	10	2.7%	10	2.3%	10	5.6%	10	4.1%	10	6.0%	-
OR6	10	1.7%	10	2.1%	10	2.6%	10	2.1%	10	3.4%	-
OR4	30	2.9%	20	2.8%	20	2.4%	30	3.4%	20	3.0%	-
OR2	60	4.4%	90	5.8%	60	4.4%	60	4.5%	60	5.0%	-
Med											
Total	30	3.4%	50	4.8%	40	4.2%	50	5.0%	40	4.5%	10
OR9	-	3.8%	-	14.3%	-	11.4%	-	7.5%	-	11.2%	-
OR8	-	-	-	-	-	-	-	-	-	-	-
OR7	-	2.5%	-	1.7%	-	2.4%	-	3.3%	10	5.1%	-
OR6	10	3.1%	10	3.7%	-	1.6%	-	2.8%	-	2.3%	-
OR4	10	4.2%	10	2.7%	20	5.0%	20	5.6%	20	5.6%	-
OR3	-	-	-	-	-	11.0%	-	-	-	-	-
OR2	10	3.2%	30	8.1%	20	4.8%	20	6.4%	10	4.2%	-
RM GS											
Total	250	4.4%	220	3.7%	370	6.1%	540	9.5%	290	5.1%	20
OR9	-	2.7%	-	4.1%	-	5.3%	10	10.2%	-	3.7%	-
OR8	10	3.3%	-	0.9%	10	3.5%	10	4.0%	10	4.3%	-
OR7	10	2.1%	-	1.3%	10	2.1%	20	3.9%	-	1.1%	-
OR6	10	1.4%	10	1.8%	10	1.9%	30	5.3%	10	1.6%	-
OR4	40	3.2%	50	4.1%	90	7.4%	140	12.7%	40	3.5%	-
OR3	20	4.1%	20	3.5%	30	4.8%	20	3.0%	20	2.5%	-
OR2	160	5.9%	130	4.5%	220	7.1%	330	11.8%	210	7.6%	10
RM Band											
Total	10	2.1%	10	3.3%	10	1.8%	10	1.8%	-	1.5%	-
OR9	-	-	-	-	-	-	-	-	-	-	-
OR8	-	-	-	9.5%	-	-	-	-	-	-	-
OR7	-	-	-	3.4%	-	-	-	-	-	-	-
OR6	-	4.0%	-	2.0%	-	-	-	-	-	1.9%	-
OR4	-	1.8%	-	1.6%	-	1.7%	-	-	-	-	-
OR3	-	-	-	-	-	-	-	-	-	-	-
OR2	-	2.2%	10	4.1%	-	2.8%	10	3.3%	-	2.2%	-

* No outflow as a percentage of strength is shown for Other/No Spec or Careers
Dec-13 Edition.

11a Trained Regular Officer Promotions to Substantive Rank

	2009/2010	2010/2011	2011/2012	2012/2013	12 Months to 1st Dec 13
Total Officers	540	500	480	490	520
OF7 and Above	10	10	20	10	10
OF6	10	20	20	20	20
OF5	40	40	40	30	40
OF4	130	110	100	100	90
OF3	250	240	180	210	230
OF2	100	80	110	120	140
OF1	N/A	N/A	N/A	N/A	N/A

11b Trained Regular Rating & Other Rank Promotions to Substantive Rank

	2009/2010	2010/2011	2011/2012	2012/2013	12 Months to 1st Dec 13
Total Ratings	3,430	2,540	1,880	1,530	2,240
OR9	150	90	70	30	100
OR8	250	120	110	30	120
OR7	670	460	360	300	380
OR6	950	700	550	410	600
OR4	1,400	1,150	800	760	1,040
OR3	10	20	~	~	~

Dec-13 Edition.

		2009/2010	2010/2011	2011/2012	2012/2013	12 Months to 1st Dec 13							
Royal Navy	Officers												
	Total	290	330	290	290								250
Royal Marines	Officers												
	Total	80	70	40	50								40
	Warfare	130	180	160	140								140
	Engineer	80	90	70	100								80
	Logistics	40	40	30	20								10
	Medical	20	20	20	10								10
	Medical Services	10	~	~	~								~
	Dental	~	~	~	~								~
	QARNNS	~	~	~	~								~
	Chaplain	~	~	~	~								~
	Other	~	~	~	~								~
	RM GS	80	70	40	50								40
	RM BS	~	~	~	~								~

		Dec-12	Jan-13	Feb-13	Mar-13	Apr-13	May-13	Jun-13	Jul-13	Aug-13	Sep-13	Oct-13	Nov-13
Royal Navy	Officers												
	Total	10	20	20	30	~	40	10	20	~	40	10	40
Royal Marines	Officers												
	Total	30	~	10	~	~	~	~	~	~	~	~	~
	Warfare	10	~	20	10	~	10	10	20	~	10	10	30
	Engineer	~	20	~	~	~	30	~	~	~	20	~	10
	Logistics	~	~	~	~	~	~	~	~	~	10	~	~
	Medical	~	~	~	10	~	~	~	~	~	~	~	~
	Medical Services	~	~	~	~	~	~	~	~	~	~	~	~
	Dental	~	~	~	~	~	~	~	~	~	~	~	~
	QARNNS	~	~	~	~	~	~	~	~	~	~	~	~
	Chaplain	~	~	~	~	~	~	~	~	~	~	~	~
	Other	~	~	~	~	~	~	~	~	~	~	~	~
	RM GS	30	~	10	~	~	~	~	~	~	~	~	~
	RM BS	~	~	~	~	~	~	~	~	~	~	~	~

12b

Gains to the Trained Regular Rating Strength from Untrained by Branch and Specialisation

		2009/2010	2010/2011	2011/2012	2012/2013	12 Months to 1st Dec 13
Royal Navy	Ratings Total	2,200	1,690	910	980	1,120
Royal Marines	Other Ranks Total	700	730	530	540	660
XR		590	390	240	270	290
	WS	240	150	70	120	110
	WS(AWT)	-	-	-	-	-
	WS(AWW)	-	-	-	-	-
	WS(EW)	-	-	-	-	-
	WS(UW)	-	-	-	-	-
	CIS	120	60	40	40	40
	HM	10	10	10	20	20
	HM(H)	10	-	-	-	-
	HM(M)	-	-	-	-	-
	Mine Warfare	50	30	20	40	50
	Diver	30	20	20	20	30
	Seaman Specialist	100	100	60	20	20
	Weapons Analyst	-	-	-	-	-
	PT	-	-	-	-	-
	RN Police	-	-	-	-	-
	CT	20	20	10	10	10
	Unspecified	-	-	-	-	-
XSM		100	60	40	40	50
	Coxswain (SM)	-	-	-	-	-
	WS(SSM)	40	20	20	20	30
	WS(TSM)	30	20	-	10	10
	CISSM	30	20	20	10	10
	Unspecified	-	-	-	-	-
XAV		70	80	20	20	40
	Aircrewman	-	-	-	-	-
	NA(AC)	10	20	10	10	10
	NA(AH)	60	60	20	10	30
	NA(Phot)	-	-	-	-	-
	RM Aircrewmen	-	-	-	-	-
	Unspecified	-	-	-	-	-
EGS		530	360	160	210	280
	MEM	-	-	-	-	-
	WEM	-	-	-	-	-
	ET(ME)	360	220	90	150	180
	ET(WE)	160	130	70	60	100
	ETS	-	-	-	-	-
	Unspecified	-	-	-	-	-
ESM		190	160	130	130	140
	MEM	-	-	-	-	-
	WEM	-	-	-	-	-
	ET(MESM)	100	100	60	90	90
	ET(WESM)	80	60	70	40	50
EAE		340	340	190	100	160
	AEA	-	-	-	-	-
	AEM	-	-	-	-	-
	AET	320	320	180	100	160
	NA(SE)	20	20	-	-	-
	Unspecified	-	-	-	-	-
LOGS		300	230	90	140	100
	Caterer	-	-	-	-	-
	Chef	90	50	40	40	40
	Steward	90	60	10	20	20
	Supply Chain	60	40	10	30	20
	Writer	60	80	30	50	20
	Family Service	-	-	-	-	-
	Unspecified	-	-	-	-	-
MED		70	70	50	60	70
	Dental Hyg	-	-	-	-	-
	Dental SA	10	10	-	-	-
	Med Asst	60	50	40	40	60
	NN	10	10	10	10	10
	Med Techn	-	-	-	-	-
	RM Med Asst	-	-	-	-	-
	Unspecified	-	-	-	-	-
RM GS		680	700	510	520	640
RM Band		20	30	20	20	20
	Band	20	20	20	20	20
	Bugler	-	10	-	-	-

12b Gains to the Trained Regular Rating Strength from Untrained by Branch and Specialisation (Continued)

		Dec-12	Jan-13	Feb-13	Mar-13	Apr-13	May-13	Jun-13	Jul-13	Aug-13	Sep-13	Oct-13	Nov-13
Royal Navy	Ratings												
	Total	50	70	80	70	30	170	70	140	-	150	100	190
Royal Marines	Other Ranks												
	Total	40	70	70	50	20	80	50	60	40	50	40	80
XR		-	30	20	30	-	20	50	30	-	40	20	60
	WS	-	30	-	10	-	20	10	20	-	30	-	10
	WS(AWT)	-	-	-	-	-	-	-	-	-	-	-	-
	WS(AWW)	-	-	-	-	-	-	-	-	-	-	-	-
	WS(EW)	-	-	-	-	-	-	-	-	-	-	-	-
	WS(UW)	-	-	-	-	-	-	-	-	-	-	-	-
	CIS	-	-	10	-	-	-	20	-	-	-	-	10
	HM	-	-	-	10	-	-	-	-	-	-	10	10
	HM(H)	-	-	-	-	-	-	-	-	-	-	-	-
	HM(M)	-	-	-	-	-	-	-	-	-	-	-	-
	Mine Warfare	-	-	-	10	-	-	10	-	-	-	10	10
	Diver	-	-	10	-	-	-	10	-	-	10	-	10
	Seaman Specialist	-	-	-	-	-	-	-	-	-	10	-	10
	Weapons Analyst	-	-	-	-	-	-	-	-	-	-	-	-
	PT	-	-	-	-	-	-	-	-	-	-	-	-
	RN Police	-	-	-	-	-	-	-	-	-	-	-	-
	CT	-	-	-	-	-	-	-	10	-	-	-	-
	Unspecified	-	-	-	-	-	-	-	-	-	-	-	-
XSM		-	-	10	-	-	10	-	10	-	20	-	10
	Coxswain (SM)	-	-	-	-	-	-	-	-	-	-	-	-
	WS(SSM)	-	-	10	-	-	10	-	-	-	10	-	10
	WS(TSM)	-	-	-	-	-	-	-	-	-	-	-	10
	CISSM	-	-	-	-	-	-	-	-	-	10	-	-
	Unspecified	-	-	-	-	-	-	-	-	-	-	-	-
XAV		-	-	-	10	-	-	-	20	-	-	-	20
	Aircrewman	-	-	-	-	-	-	-	-	-	-	-	-
	NA(AC)	-	-	-	10	-	-	-	-	-	-	-	-
	NA(AH)	-	-	-	-	-	-	-	20	-	-	-	10
	NA(Phot)	-	-	-	-	-	-	-	-	-	-	-	-
	RM Aircrewmen	-	-	-	-	-	-	-	-	-	-	-	-
	Unspecified	-	-	-	-	-	-	-	-	-	-	-	-
EGS		10	10	20	-	10	70	-	20	-	60	30	30
	MEM	-	-	-	-	-	-	-	-	-	-	-	-
	WEM	-	-	-	-	-	-	-	-	-	-	-	-
	ET(ME)	-	-	20	-	-	50	-	20	-	40	20	20
	ET(WE)	10	10	-	-	10	30	-	-	-	20	10	10
	ETS	-	-	-	-	-	-	-	-	-	-	-	-
	Unspecified	-	-	-	-	-	-	-	-	-	-	-	-
ESM		30	-	-	-	10	30	-	20	-	10	20	10
	MEM	-	-	-	-	-	-	-	-	-	-	-	-
	WEM	-	-	-	-	-	-	-	-	-	-	-	-
	ET(MESM)	20	-	-	-	-	20	-	20	-	-	20	-
	ET(WESM)	10	-	-	-	10	10	-	-	-	-	-	10
EAE		-	10	20	20	10	20	20	-	-	20	-	40
	AEA	-	-	-	-	-	-	-	-	-	-	-	-
	AEM	-	-	-	-	-	-	-	-	-	-	-	-
	AET	-	10	20	20	10	20	20	-	-	20	-	40
	NA(SE)	-	-	-	-	-	-	-	-	-	-	-	-
	Unspecified	-	-	-	-	-	-	-	-	-	-	-	-
LOGS		-	10	-	-	-	20	10	20	-	-	20	20
	Caterer	-	-	-	-	-	-	-	-	-	-	-	-
	Chef	-	10	-	-	-	20	-	10	-	-	10	10
	Steward	-	-	-	-	-	-	-	-	-	-	-	-
	Supply Chain	-	-	-	-	-	-	-	10	-	-	-	10
	Writer	-	-	-	-	-	-	10	-	-	-	10	-
	Family Service	-	-	-	-	-	-	-	-	-	-	-	-
	Unspecified	-	-	-	-	-	-	-	-	-	-	-	-
MED		-	10	10	10	-	10	-	10	-	10	10	-
	Dental Hyg	-	-	-	-	-	-	-	-	-	-	-	-
	Dental SA	-	-	-	-	-	-	-	-	-	-	-	-
	Med Asst	-	10	10	-	-	10	-	10	-	10	10	-
	Naval Nurse	-	-	-	-	-	-	-	-	-	-	-	-
	Med Techn	-	-	-	-	-	-	-	-	-	-	-	-
	RM Med Asst	-	-	-	-	-	-	-	-	-	-	-	-
	Unspecified	-	-	-	-	-	-	-	-	-	-	-	-
RM GS		40	70	70	50	20	80	50	60	40	30	40	70
RM Band		-	-	-	-	-	-	-	-	-	10	-	-
	Band	-	-	-	-	-	-	-	-	-	10	-	-
	Bugler	-	-	-	-	-	-	-	-	-	-	-	-

13 Trained Intake from Civil Life or Another Service

	2009/2010	2010/2011	2011/2012	2012/2013	12 Months to 1st Dec 13	Actual Nov 13
Total Officers	10	10	~	10	10	~
Warfare	~	~	~	~	~	~
Engineer	-	-	-	~	~	-
Logistics	~	-	-	~	-	-
Medical	-	~	-	-	-	-
Medical Services	-	-	~	-	-	-
QARNNS	~	-	-	-	-	-
Dental	~	~	-	-	-	-
Chaplain	-	-	-	-	~	~
RM GS	~	~	~	~	-	-
RM Band	-	-	-	-	-	-
No Value	-	-	-	-	-	-
Total Ratings	120	80	40	60	80	~
XR	30	20	20	20	20	~
XSM	~	~	~	-	-	~
XAV	~	~	~	~	-	-
EGS	10	10	~	~	10	-
ESM	10	~	~	-	~	-
EAE	10	~	-	~	~	-
LOGS	10	10	~	~	~	~
MED	~	~	~	~	~	~
QARNNS	-	-	-	-	-	-
RM GS	40	30	10	20	30	-
RM Band	-	~	-	~	-	-
No Value	-	-	-	-	-	-

The figures above show trained intake to the regular strength from civilian life or from another service.

Dec-13 Edition.

Glossary

Term	Definition
RNR	Royal Navy Reserves
RMR	Royal Marine Reserves
FTRS	Full Time Reserve Service
FTRS Regular	FTRS Personnel counted against the Regular Liability
FTRS Non Regular	FTRS Personnel not counted against the Regular Liability
Transfer Trainees	Trained Personnel undergoing further training in an alternative discipline
GS	General Service - Surface Fleet
SM	Submarine - Submarines
FAA	Fleet Air Arm - Aviation
XR	Warfare General Service
XSM	Warfare Submarine
XAV	Warfare Aviation and RM Aircrew
EGS	General Service Engineers
ESM	Submarine Engineers
EAE	Aviation Engineers
QARNNS	Queen Alexandra's Royal Naval Nursing Service

Specialisation	Definition
AEA	Air Engineer Artificer
AEM	Air Engineer Mechanic
AET	Air Engineering Technician
CIS	Communications Information Systems
CISSM	Communications Information Systems Submarine
CMA	Chartered Management Accountant
CT	Communications Technician
Dental Hyg	Dental Hygienist
Dental SA	Dental Surgery Assistant
E(IS SM)	Engineer - Information Systems Submarine
E(IS)	Engineer - Information Systems
E(TM SM)	Engineering Training Manager Submarine
E(TM)	Engineering Training Manager
ET(ME)	Engineering Technician Marine Engineer
ET(MESM)	Engineering Technician Marine Engineer Submarine
ET(WE)	Engineering Technician Weapon Engineer
ET(WESM)	Engineering Technician Weapon Engineer Submarine
ETS	Education Training & Support
HM	Hydrographical Meteorological
HM(H)	HM(Hydrographic) (formally Survey Recorders)
HM(M)	HM(Meteorological) (formally NA(Meteorological))
Med Asst	Medical Assistant
Med Tech	Medical Technician
MEM	Marine Engineering Mechanic
NA(AC)	Naval Airman Aircraft Controller
NA(AH)	Naval Airman Aircraft Handler
NA(PHOT)	Naval Airman Photographer
NA(SE)	Naval Airman Survival Equipment
PT	Physical Training Instructor
PWO	Principal Warfare Officer
PWO(A)	Principal Warfare Officer (Air)
PWO(C)	Principal Warfare Officer (Communications)
PWO(N)	Principal Warfare Officer (Navigation)
PWO(U)	Principal Warfare Officer (Underwater)
WEM	Weapon Engineering Mechanic
WS	Warfare Specialist
WS(AWT)	Warfare Specialist - Above Water Tactical
WS(AWW)	Warfare Specialist - Above Water Warfare
WS(EW)	Warfare Specialist - Electronic Warfare
WS(SSM)	Warfare Specialist Sensors Submarine
WS(TSM)	Warfare Specialist Tactical Submarine
WS(UW)	Warfare Specialist - Underwater Warfare