

UK DEFENCE STATISTICS
FACTSHEET 2010 EDITION



MINISTRY OF DEFENCE

Produced by Defence Analytical
Services & Advice



A NATIONAL STATISTICS PUBLICATION

Symbols

- } Categories merged for some years
|| Discontinuity in time series
* Not applicable
.. Not available
p Provisional
r Revised
p r Revised but still provisional
e Estimate
- Zero or rounded to zero

Rounding

Individual figures in the tables are rounded and thus may not sum precisely to the totals shown.

Sources

The information given in this factsheet is based on the more detailed information given in the 2010 edition of UK Defence Statistics.

UK Defence Statistics is available on the World Wide Web at www.dasa.mod.uk.



F 1.2 Public Expenditure by Departmental Grouping

Table showing Public Expenditure by Departmental Grouping for Outturn 2007/08, 2008/09, and Estimated 2009/10. Includes sub-categories like Total Gov't Resource DEL and Total Gov't AME.

F 1.3 Principal Headings of Defence Expenditure Outturn (Resource Basis)

Table showing Principal Headings of Defence Expenditure Outturn (Resource Basis) for 2007/08, 2008/09, and 2009/10. Includes categories like Departmental Expenditure Limits, Resource DEL, and Capital DEL.

F 1.4 Estimated MOD Equipment Expenditure

Table showing Estimated MOD Equipment Expenditure for 2006/07, 2007/08, 2008/09, and 2009/10. Includes categories like Capital Expenditure on Equipment and Research & Development.

F 1.5 MOD Resources by Budgetary Areas

Table showing MOD Resources by Budgetary Areas for 2007/08, 2008/09, and 2009/10. Includes RIR 1: PROVISION OF DEFENCE CAPABILITY and RIR 2: CONFLICT PREVENTION.

F 1.8 MOD Research and Development Expenditure Outturn

Table showing MOD Research and Development Expenditure Outturn for 2006/07, 2007/08, and 2008/09. Includes Research, Receipts, and Development categories.

F 1.10a Defence Inflation

Table showing Defence Inflation (Weights and Index) for 2004/05 to 2009/10. Includes categories like All Defence (UK), Contracts, Labour Costs, and Cash Offices.

F 1.11 Estimated Defence Expenditure Outturn in the UK: Breakdown by Industry Group

Table showing Estimated Defence Expenditure Outturn in the UK by Industry Group for 2007/08 and 2008/09. Includes SIC(92)/Sic(03)/SIC(07) Section and VAT exclusive at Current Prices (£ million).

F 1.13 Estimates of Identified Export Orders: Defence Equipment & Services

Table showing Estimates of Identified Export Orders: Defence Equipment & Services for 2007, 2008, and 2009. Includes Identified Export Orders for Defence Equipment and Services, Split by Equipment Type, and Air, Land, Sea, and Not Specified sectors.

F 1.15 Contracts Placed: By Type

Table showing Contracts Placed: By Type for 2007/08, 2008/09, and 2009/10. Includes Total Value of MOD HQ Contracts Placed and Total Number of MOD HQ Contracts Placed.

F 1.17 Organisations paid £50 million or more by the Ministry of Defence in 2009/10

Table listing Organisations paid £50 million or more by the Ministry of Defence in 2009/10, including Alphabetical Order, VAT exclusive at Current Prices (£ million), and various company names.

F 1.20 NATO Countries Defence Expenditure as % of GDP

Table showing NATO Countries Defence Expenditure as % of GDP for 2007, 2008, and 2009. Includes NATO - Total and NATO - Europe sub-totals.

F 1.21 Top 15 Worldwide Military Spenders: 2009

Table showing Top 15 Worldwide Military Spenders: 2009, including Rank, Country, Spending, and World Share.

CONTENTS

Table of Contents listing various sections like Finance, Personnel, Health, Formations, Vessels, Aircraft and Vehicles of the Armed Forces, Search and Rescue, and Land Holdings and Buildings.

UK DEFENCE STATISTICS 2010 EDITION

All data shown in this factsheet are taken from the publication UK Defence Statistics 2010.

This compendium includes detailed information on a wide range of Defence activities with some accompanying commentary and is an invaluable guide to current and historical defence statistics.

It is available from the DASA website: www.dasa.mod.uk

DASA welcome feedback on our statistical products. If you have any comments or questions about this publication or about DASA statistics in general, you can contact us as follows:

Phone Laura Bates on 0207 8078792. Email DASA-enquiries-mailbox@mod.uk. Visit our website at www.dasa.mod.uk and complete the feedback form.

F 2.1 Service and Civilian Personnel Strength

1 April	1997	2008	Thousands: FTE	
			2009	2010
Total Personnel	348.5	282.6 P	281.4 P	284.0 P
Service	215.1	193.1 P	194.7 P	198.1 P
UK Regulars	210.8	187.1 P	188.4 P	191.7 P
FTRS	-	1.8 P	2.1 P	2.3 P
Gurkhas		3.9 P	3.9 P	3.8 P
Locally Entered / Engaged	4.3	{	0.4	0.4
Civilian	133.3	89.5	86.6	85.8
Level 1	101.9	69.0	66.4	65.9
Trading Funds	15.5	9.2	9.6	9.7
Locally Engaged	15.9	11.2	10.5	10.2

p denotes provisional. Due to ongoing validation of data from the Joint Personnel Administration System, Service strength statistics for 1 April 2007 onwards are provisional and subject to review.

F 2.5a Full Time Trained Strength and Requirement

1 April	2007	2008	2009	2010	Number
All Services					
Requirement	183 610	179 270	178 860	178 750	
Strength	177 820 P	173 960 P	173 920 P	177 840 P	
Surplus/deficit	-5 790 P	-5 310 P	-4 940 P	-910 P	
as % of requirement	-3.2 P	-3.0 P	-2.8 P	-0.5 P	
Naval service					
Requirement	36 800	36 260	35 760	35 790	
Strength	34 920 P	35 070 P	35 020 P	35 500 P	
Surplus/deficit	-1 880	-1 190 P	-740 P	-290 P	
as % of requirement	-5.1	-3.3 P	-2.1 P	-0.8 P	
Army					
Requirement	101 800	101 800	101 790	102 160	
Strength	99 350 P	98 270 P	99 250 P	102 200 P	
Surplus/deficit	-2 450 P	-3 530 P	-2 540 P	40 P	
as % of requirement	-2.4 P	-3.5 P	-2.5 P	-	
RAF					
Requirement	45 020	41 210	41 310	40 800	
Strength	43 550	40 620 P	39 660 P	40 140 P	
Surplus/deficit	-1 460	-590 P	-1 660 P	-660 P	
as % of requirement	-3.2	-1.4 P	-4.0 P	-1.6 P	

Full-time strengths include UK Regulars, Trained Gurkhas and FTRS.

F 2.10 Ethnic Composition of Serving Members of the UK Regular Forces

1 April 2010	Thousands		
	White	Black and Minority Ethnic	Total
All Services	172.8 P	12.2 P	191.7 P
Officers	29.3 P	0.7 P	31.9 P
Other ranks	143.5 P	11.4 P	159.7 P
Naval Service	35.9 P	1.3 P	38.7 P
Officers	7.0 P	0.1 P	7.5 P
Other ranks	28.9 P	1.2 P	31.3 P
Army	96.0 P	10.0 P	108.9 P
Officers	13.5 P	0.4 P	14.6 P
Other ranks	82.5 P	9.6 P	94.2 P
RAF	41.0 P	0.9 P	44.1 P
Officers	8.8 P	0.2 P	9.8 P
Other ranks	32.1 P	0.7 P	34.2 P

F 2.12 Strength of UK Regular Forces by rank

1 April	2007	2008	2009	2010	Number
All Services	32 100 P	31 710 P	31 690 P	31 930 P	
Officers					
Major General and above	140 P	140 P	140 P	140 P	
Brigadier	350 P	350 P	360 P	360 P	
Colonel	1 190 P	1 180 P	1 220 P	1 220 P	
Lieutenant Colonel	4 070 P	4 070 P	4 060 P	4 130 P	
Major	9 760 P	9 600 P	9 540 P	9 530 P	
Captain	12 120 P	11 900 P	11 770 P	11 910 P	
Lieutenant and below	4 480 P	4 460 P	4 600 P	4 640 P	
Other Ranks	158 290 P	155 340 P	156 680 P	159 730 P	
Warrant Officer	9 150 P	9 080 P	9 140 P	9 250 P	
Staff Sergeant	13 810 P	13 570 P	13 290 P	13 170 P	
Sergeant	21 950 P	21 310 P	20 980 P	21 070 P	
Corporal	30 650 P	30 300 P	29 600 P	30 110 P	
Lance Corporal	16 560 P	16 700 P	16 410 P	16 520 P	
Private (including juniors)	66 160 P	64 390 P	67 250 P	69 600 P	

1. Figures are for paid rank. Includes equivalent ranks for the Naval Service and RAF.

F 2.15/2.16 Strength of Reserve Forces and Cadets

1 April	1997	2008	2009	2009	Thousands
All Services	322.1	
Regular Reserves	259.4	
Volunteer Reserves	62.6	39.2 P	39.7 P	37.6 P	
Naval Service	27.7	22.5	
Regular Reserves	24.1	19.6	
Volunteer Reserves	3.6	2.9	3.0	2.9	
Army	247.8	
Regular Reserves	190.1	
Volunteer Reserves	57.7	35.0 P	35.3 P	33.1 P	
Royal Air Force	46.7	
Regular Reserves	45.3	
Volunteer Reserves	1.4	1.3 P	1.4 P	1.5 P	
All Services Cadets	127.5	127.6	130.0	133.0	

Reserve figures exclude FTRS, URNU and UAS personnel but include OTC and mobilised reservist personnel. Cadet figures exclude officers, training and administrative staff.

F 2.17 Intake to UK Regular Forces from Civil Life by Service

	2006/07	2007/08	2008/09	2009/10	Number
All Services	19 790 P	21 330 P	22 770 P	21 800 P	
Officers	1 580 P	1 740 P	1 500 P	1 590 P	
Other Ranks	18 210 P	19 590 P	21 260 P	20 210 P	
Naval Service	3 770 P	3 860 P	4 000 P	4 150 P	
Officers	320 P	290 P	210 P	390 P	
Other Ranks	3 450 P	3 580 P	3 800 P	3 760 P	
Army	14 300 P	14 540 P	14 510 P	14 180 P	
Officers	900 P	1 060 P	890 P	800 P	
Other Ranks	13 400 P	13 480 P	13 620 P	13 390 P	
RAF	1 720	2 930 P	4 260 P	3 470 P	
Officers	370	390 P	410 P	400 P	
Other Ranks	1 360	2 540 P	3 840 P	3 070 P	

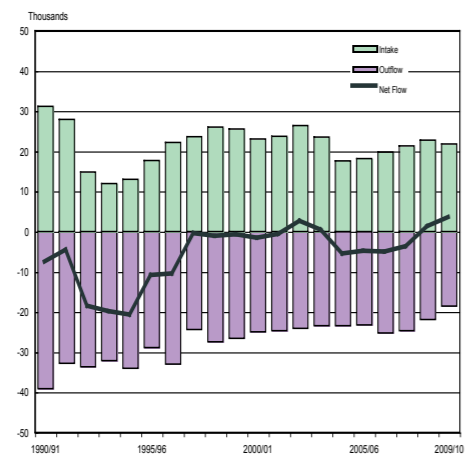
Due to ongoing validation of data from the Joint Personnel Administration System, all Naval Service and Army flow statistics for financial year 06/07 onwards and all RAF flow statistics for financial year 07/08 onwards are provisional and subject to review.

F 2.20 Outflow from UK Regular Forces by Service

	1997/98	2007/08	2008/09	2009/10	Number
All Services	24 350	24 690 P	21 880 P	18 570 P	
Officers	2 280	2 820 P	2 440 P	1 890 P	
Other Ranks	22 070	21 860 P	19 450 P	16 680 P	
Naval Service	5 270	4 340 P	4 430 P	3 740 P	
Officers	620	580 P	520 P	450 P	
Other Ranks	4 650	3 760 P	3 910 P	3 290 P	
Army	14 470	15 330 P	13 140 P	11 840 P	
Officers	1 040	1 490 P	1 270 P	990 P	
Other Ranks	13 430	13 830 P	11 870 P	10 850 P	
RAF	4 610	5 020 P	4 320 P	3 000 P	
Officers	620	760 P	640 P	460 P	
Other Ranks	3 990	4 270 P	3 670 P	2 540 P	

Due to ongoing validation of data from the Joint Personnel Administration System, all Naval Service and Army flow statistics for financial year 06/07 onwards and all RAF flow statistics for financial year 07/08 onwards are provisional and subject to review.

F 2.17 / 2.20 Intake and Outflow of UK Regular Forces



F 2.23 Indices and Illustrative Rates of UK Regular Forces Salary

	2008/09	2009/10	2010/11
(2001/02)=100			
UK Regular Forces salaries Index¹:	127	130	133
M. General and above	124	131	135
Brigadier and below	128	131	134
Sergeant and above	125	129	131
Corporal and below	127	130	133
Illustrative rates	£	£	£
General	164,159	172,130	177,993
Brigadier	96,288	98,984	100,964
Colonel	77,545	79,716	81,310
Lieutenant Colonel	74,023	76,095	77,617
Major	54,551	56,078	57,199
Captain	38,109	39,176	39,959
Lieutenant	29,704	30,536	31,147
2nd Lieutenant	23,475	24,133	24,615
Warrant Officer I	44,588	45,836	46,753
Warrant Officer II	41,249	42,404	43,252
Staff Sergeant	36,484	37,506	38,256
Sergeant	35,219	36,205	36,929
Corporal	31,646	32,532	33,182
Lance Corporal	27,599	28,372	28,940
Private	16,227	16,681	17,015

1. Indices are based on average daily rates of pay during the year. All indices are calculated using standard rank weights taken at 1 March 2008.

F 2.26 Civilian personnel¹ by Budgetary Area

1 April 2010	Thousands: FTE	
	Non-industrial	Industrial
Navy	4.2	0.6
Fleet	1.9	0.6
Royal Fleet Auxiliary Service ²	2.3	-
Army	11.9	4.6
Air	5.8	2.8
Defence Equipment and Support	13.8	2.3
MOD Headquarters	19.1	0.7
Central	16.1	0.5
Chief of Joint Operations	0.3	-
Defence Estates	2.7	0.1
Trading Funds²	9.7	-
DSTL	3.7	-
Meteorological Office	1.8	-
UK Hydrographic Office	1.0	-
Defence Support Group	3.2	-
Unallocated	0.1	-

1. Excludes Locally Engaged Civilians
 2. Industrial and non-industrial staff cannot be distinguished for Trading Funds and RFA. All staff are shown here under Non-industrial.

F 2.33 Intake and Outflow of Civilian Personnel¹

	2007/08	2008/09	2009/10	Number: Headcount
Total intake	5 370	5 080	5 140	
Total outflow	10 990	7 340	5 540	
Non-industrial Intake	3 140	3 260	3 340	
Outflow	6 810	4 910	3 880	
Retirement(normal)	680	400	300	
Retirement (health)	100	110	110	
Resignation	2 360	1 600	1 000	
Other	3 660	2 800	2 450	
Industrial Intake	1 110	780	860	
Outflow	2 240	1 510	830	
Retirement(normal)	280	190	160	
Retirement (health)	40	40	30	
Resignation	490	400	190	
Other	1 440	880	460	
Trading Funds Intake	1 120	1 040	940	
Outflow	1 940	920	830	

1. Excludes Royal Fleet Auxiliary and Locally engaged civilians

F 3.5 Suicide and Open Verdict deaths in the UK Armed Forces 1984 - 2009

All Services	Verdict	Total	Male	Female
Suicide	565	551	14	
Open	172	167	5	
Awaiting	23	22	1	
Naval Service				
Suicide	84	82	2	
Open	38	37	1	
Awaiting	2	2	-	
Army				
Suicide	352	346	6	
Open	99	95	4	
Awaiting	20	19	1	
RAF				
Suicide	129	123	6	
Open	35	35	-	
Awaiting	1	1	-	

Data presented here include all trained and untrained regular personnel (including Gurkhas) and any non-regulars who died whilst on deployment.

F 4.5 Operational Royal Navy and Royal Fleet Auxiliary ships