

Naval Service Quarterly Pocket Brief October 2010

Produced by DASA (Navy)
Building 33
Whale Island
Portsmouth
PO2 8ER



Telephone: 02392 547426
Internal: 93832 7426
Fax: 02392 547431
E-mail: naw@dasa.mod.uk

N.B. Sum of parts may not equal totals due to rounding

Due to the introduction of JPA to the Royal Naval Service during October 2006, all data are provisional and subject to revision.



2. Strength Against Liability at 1 October 2010

	Total Strength	Officers		Ratings	
		RN	RM	RN	RM
Regular Trained Strength	35,240	5,730	780	22,340	6,400
Full Time Reservists (FTRS) "Regular"	240	100	10	140	~
Liability ^{1,2}	35,750	5,880	770	22,560	6,540
Surplus/Deficit ³	(260)	(50)	10	(90)	(140)
Untrained Strength	3,320	950	100	1,380	880
Full Time Reservists (FTRS) "Non-Regular"	250	30	10	150	60
Total Regular Trained & Untrained Strength	38,560	6,680	880	23,720	7,280

	Total Trained and Untrained Strength	Trained Strength	FTRS "Regular"	Historic Liability ^{1,2}	Surplus/Deficit ³	Untrained Strength	FTRS "Non-Regular"
01-Apr-10	38,730	35,170	330	35,790	(290)	3,560	250
01-Apr-09	38,340	34,390	620	35,760	(750)	3,940	-
01-Apr-08	38,570	34,530	540	36,260	(1,190)	4,040	-
01-Apr-07	38,860	34,340	580	36,800	(1,880)	4,520	-

¹The term "Liability" replaces the term "Requirement".

²The latest liability is 1_10, provided by DNFS

³Surplus/Deficit = Trained Strength + FTRS "Regular" - Liability.

5. Trained Regular Strength by Branch at 1 October 2010

RN Officers		RN Ratings ¹		RM Officers	
Warfare	2,780	Warfare XR	5,640	GD	760
Engineer	1,840	Warfare SM	890	Band	10
Logistics	570	Logistics	3,230	Career	~
Medical	340	Medical	760	Total	780
Dental	60	Engineering GS	5,250		
Chaplain	60	Engineering SM	2,120		
No Specialisation	-	Warfare Aviation	770		
Family	-	Air Engineering	3,490		
Total	5,650	Careers	-		
		Not Specified	-		
		Total	22,150		

RM Other Ranks	
GD	6,070
Band	320
Careers	-
Total	6,400

Royal Navy Total	
Total Officers	6,510
Total Ratings	28,730
Total	35,240

QARNNS Officers	80
QARNNS Ratings	180

¹ Artificers have been allocated to their appropriate Branches

CONTACTS

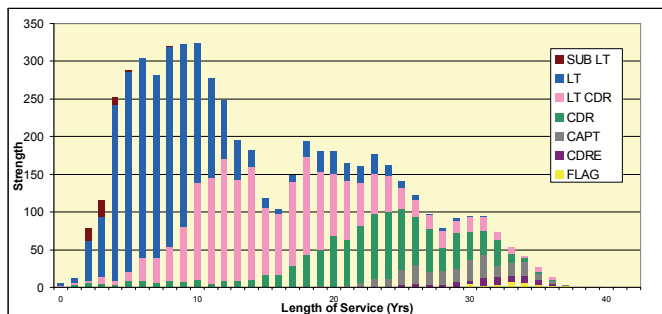
Produced by:

DASA (Navy)
Walcheren Building (33)
Whale Island
Portsmouth
Hampshire
PO2 8ER

DASA welcome feedback on our statistical products. If you have any comments or questions about this publication or about DASA statistics in general, you can contact us as follows:

Navy Peter Shute 023 92 547426
Email DASA-enquiries-mailbox@mod.uk
Visit our website at www.dasa.mod.uk

3. Trained Regular RN Officers by Paid Rank and LOS Since Entry at 1 October 2010



6. Total RN Regular Strength by Gender at 1 October 2010

Officers	Trained			Untrained		
	Male	Female	Total	Male	Female	Total
FLAG OFF	40	-	40	-	-	-
CDRE	70	-	70	-	-	-
CAPT	250	~	250	-	-	-
CDR	1,000	40	1,040	~	-	~
LT CDR	1,750	190	1,940	-	-	-
LT	1,980	360	2,340	260	40	300
SUB LT	40	10	50	450	80	530
MID	~	-	~	110	10	120
Total	5,130	600	5,730	820	130	950

Ratings						
	Male	Female	Total	Male	Female	Total
WO	640	30	660	-	-	-
WO2	550	~	560	-	-	-
CPO	3,260	180	3,440	-	-	-
PO	3,630	350	3,980	-	-	-
LDG	4,220	710	4,930	~	-	~
AB	7,380	1,400	8,770	1,220	160	1,380
Total	19,670	2,660	22,340	1,220	160	1,380

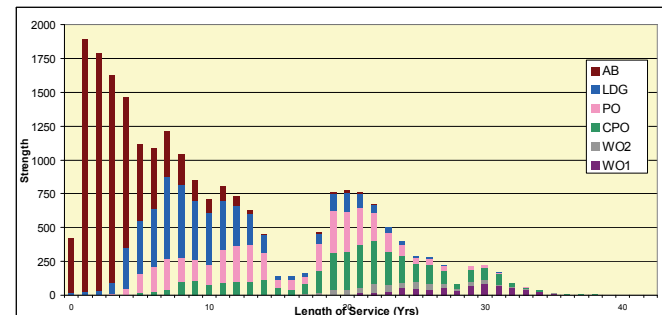
* Please note that ~ appears where there are 5 individuals or less due to the Data Protection Act 1998

1. Trained Manpower Accounts at 1 October 2010

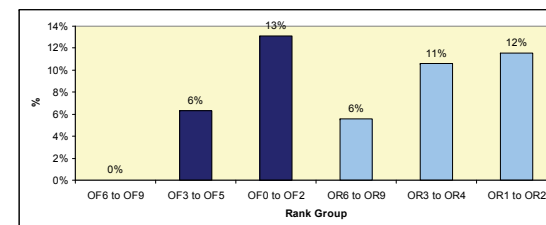
	Trained strength at 1 April 2010	GTS 2010/11	Entrants direct to trained strength 2010/11	Trained to untrained strength 2010/11	Trained wastage 2010/11	(Strength April point + inflow) - outflow	Trained strength at 1 October 2010
Officers	6,520	160	~	~	170	6,510	6,510
Ratings	28,650	1,180	40	20	1,120	28,730	28,730

GTS refers to Gains to Trained Strength and so does not include sideways entrants or trained FTRS intake, trained FTRS intake are shown as Entrants direct to trained strength.

4. Trained Regular RN Ratings by Paid Rank and LOS Since Entry at 1 October 2010



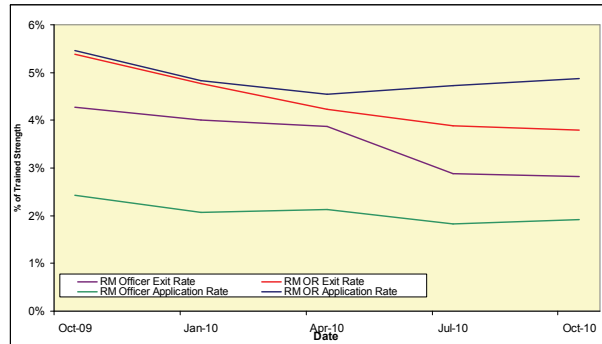
7. UK Regular Naval Service Females as a percentage of each rank group at 1 Oct 2010



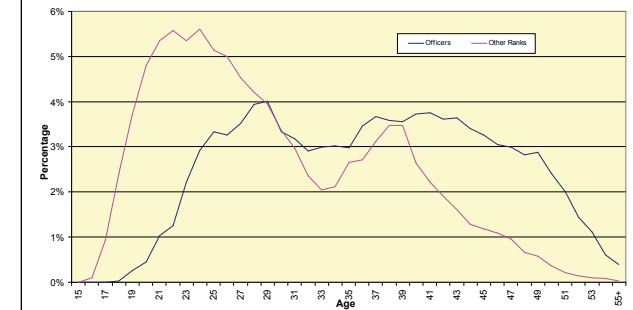
8. RN/RM Top Level Budget Trained Strength at 1 October 2010

Top Level Budget	
Navy Command	27,840
Navy Command Unallocated	27,840
Land Command	1,130
Air Command	1,040
Central	5,230
Centre	2,360
CJO	780
DE&S	2,090
Total	35,240

11. RM Voluntary Outflows and Application Rates as % of Trained Strength, 12 Months Ending 30 September 2010



14. Age Distribution - UK Regulars Naval Service 1 April 2010



9. Strength of FTRS and Activated Reservists at 1 October 2010

	Male	Female	Total
Officers			
Royal Navy	140	20	170
FTRS "Regular"	90	10	100
FTRS "Non-Regular"	20	~	30
Activated Reservists	30	10	40
Royal Marines	20	20	20
FTRS "Regular"	10	-	10
FTRS "Non-Regular"	10	-	10
Activated Reservists	~	-	~
Ratings			
Royal Navy	330	50	380
FTRS "Regular"	130	10	140
FTRS "Non-Regular"	140	20	150
Activated Reservists	70	20	90
Royal Marines	110	110	110
FTRS "Regular"	~	-	~
FTRS "Non-Regular"	60	-	60
Activated Reservists	40	-	40

12. Trained VO Applications and Exits 2010/11 to date

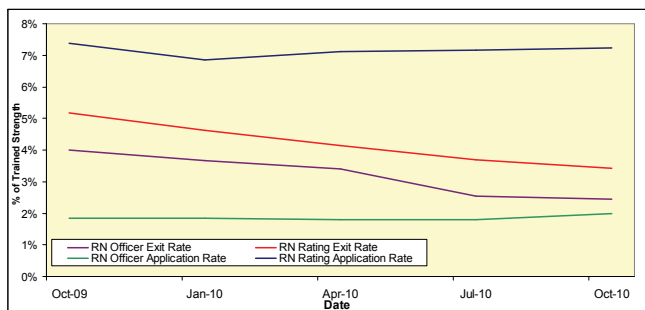
	Royal Navy		Royal Marine	
	Officers	Ratings	Officers	Ratings
VO Apps				
Applications	50	370	10	150
Withdrawals	~	20	-	10
VO Exits				
Voluntary Outflows	70	410	10	110
Time Expiry	60	220	10	40
Other	20	270	~	60
Total Exits	150	910	20	220

15. Intake for 2010/11 to date

	Intake
Total Officers	260
RN	260
From Ranks SUY/UY	40
New or Re-entrant	220
RM	-
From Ranks SUY/UY	-
New or Re-entrant	-
Total Ratings	1,340
RN	710
New Entrant (or Re-entrant)	710
Re-entrant (From Officer)	-
RM	620
New Entrant (or Re-entrant)	620
Re-entrant (From Officer)	-

This table includes entrants to both the untrained and trained strengths
There is no longer a requirement for Artificers to be shown separately

10. RN Voluntary Outflows and Application Rates as % of Trained Strength, 12 Months Ending 30 September 2010



13. Average Age of Substantive Promotions during the 12 months ending 30 September 2010

Royal Navy	Average Age on Promotion	Royal Marines	Average Age on Promotion
LDG	27	CPL	28
PO	31	SGT	34
CPO	36	C/SGT	39
WO2	40	WO2	41
WO1	43	WO1	42
LT	28	CAPTAIN RM	30
LT CDR	36	MAJOR	36
CDR	42	LT COLONEL	40
CAPTAIN	46	COLONEL	43
CDRE	49	BRIG	~
REAR ADMIRAL	51	MAJ-GENERAL	~

Please note that ~ appears where there are 5 individuals or less in accordance with Data Protection Act 1998

16. Tri-Service Strength¹ by Ethnic Origin² at 1 October 2010

	Royal Navy	Army	RAF
Total	38,560^P	106,580^P	43,480^P
Ethnic Minorities	1,280 ^P	10,020 ^P	860 ^P
<i>Percentage Ethnic Minority</i>	<i>3.4%^P</i>	<i>9.5%^P</i>	<i>2.1%^P</i>
White	35,830 ^V	95,790 ^V	40,480 ^V
Unknown	1,460 ^P	770 ^P	2,140 ^P

1. UK Regular Forces comprises trained and untrained personnel and excludes Gurkhas, Full Time Reserve Service personnel and mobilised reservists.

2. Ethnic minority percentage figures are based on those with a known ethnic origin. Percentages are calculated from unrounded data.

^P denotes provisional. Data is provisional due to ongoing validation of data from the Joint Personnel Administration System

Source: UK Armed Forces Quarterly Manning Report.