

Naval Service Quarterly Pocket Brief Apr 2010

Produced by DASA (Navy)
Building 33
Whale Island
Portsmouth
PO2 8DX



Telephone: 02392 547426
Internal: 93832 7426
Fax: 02392 547431
E-mail: naw@dasa.mod.uk

N.B. Sum of parts may not equal totals due to rounding

Due to the introduction of JPA to the Royal Naval Service during October 2006, all data are provisional and subject to revision.



2. Strength Against Requirement at 1 April 2010

	TOTAL STRENGTH	OFFICERS		RATINGS	
		RN	RM	RN	RM
Regular Trained Strength	35,170	5,740	780	22,380	6,270
Full Time Reservists (FTRS) "Regular"	330	110	10	190	20
Liability ^{1,2}	35,790	5,840	790	22,680	6,480
Surplus/Deficit ³	(290)	10	~	(120)	(190)
U/T Strength	3,560	870	70	1,750	860
Full Time Reservists (FTRS) "Non-Regular"	250	30	~	150	60
TOTAL Regular Trained & Untrained Strength	38,730	6,610	860	24,130	7,140

	Total Trained & Untrained Strength	Trained Strength	FTRS	Historic Liability ^{1,2}	Surplus/Deficit ³	U/T Strength	FTRS "Non-Regular"
01-Apr-09	38,340	34,390	620	35,760	(750)	3,940	-
01-Apr-08	38,570	34,530	540	36,260	(1,190)	4,040	-
01-Apr-07	38,860	34,340	580	36,800	(1,880)	4,520	-
01-Apr-06	39,390	34,890	720	36,830	(1,220)	4,500	-

¹The term "Liability" replaces the term "Requirement".
²The smoothed headmark liability is 2_09, provided by NPS

³Surplus/Deficit = Trained Strength + FTRS - Requirement.

5. Trained Regular Strength by Branch at 1 April 2010

RN OFFICERS		RN RATINGS ¹		RM OFFICERS	
Warfare	2,760	Warfare XR	5,680	GD	770
Engineer	1,850	Warfare SM	880	Band	10
Logistics	570	Logistics	3,240	Career	~
Medical	360	Medical	780	Total	780
Dental	60	Engineering GS	5,250		
Chaplain	60	Engineering SM	2,140		
No Specialisation	-	Warfare Aviation	750		
Family	-	Air Engineering	3,470		
Total	5,660	Careers	-		
		Not Specified	-		
		Total	22,190	Total	6,270

RM OTHER RANKS	
GD	5,950
Band	320
Careers	-
Total	6,270

QARNNS OFFICERS	
QARNNS OFFICERS	80
QARNNS RATINGS	190

ROYAL NAVY TOTAL	
TOTAL OFFICERS	6,520
TOTAL RATINGS	28,650
TOTAL	35,170

¹ Artificers have been allocated to their appropriate Branches

CONTACTS

Produced by:

DASA (Navy)
Walcheren Building (33)
Whale Island
Portsmouth
Hampshire
PO2 8DX

DASA welcome feedback on our statistical products. If you have any comments or questions about this publication or about DASA statistics in general, you can contact us as follows:

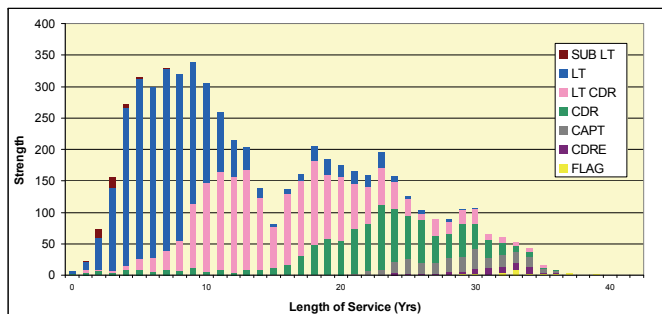
Navy Peter Shute 023 92 547426
Email DASA-enquiries-mailbox@mod.uk
Visit our website at www.dasa.mod.uk

1. Trained Manpower Accounts at 1 April 2010

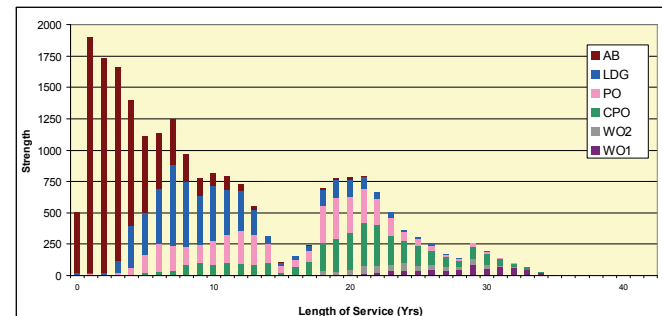
	Trained strength at 1 April 2009	GTS 2009/10	Entrants direct to trained strength 2009/10	Trained to untrained strength 2009/10	Trained wastage 2009/10	(strength April point + inflow) - outflow	Trained strength at 1 April 2010	Difference ¹
Officers	6,510	390	10	30	360	6,520	6,520	-
Ratings	27,880	2,920	140	30	2,260	28,650	28,650	-

¹ Inflow and Outflow data on ARES2 currently does not recognise flows to and from FTRS and other reservist types, resulting in a difference between actual and calculated strengths.

3. Trained Regular RN Officers by Paid Rank & LOS Since Entry at 1 April 2010



4. Trained Regular RN Ratings by Paid Rank & LOS Since Entry at 1 April 2010



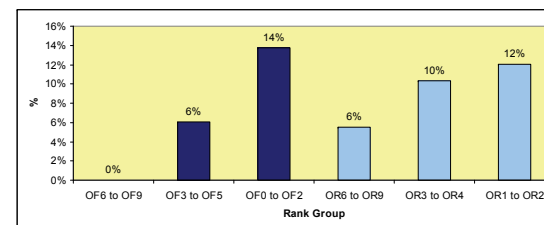
6. Total RN Regular Strength by Gender at 1 April 2010

	TRAINED			UNTRAINED		
	Male	Female	Total	Male	Female	Total
FLAG OFF	30	-	30	-	-	-
CDRE	80	-	80	-	-	-
CAPT	250	~	250	-	-	-
CDR	1,000	30	1,030	-	-	-
LT CDR	1,800	190	1,990	-	-	-
LT	1,960	360	2,320	240	30	280
SUB LT	40	10	40	400	90	490
MID	-	-	-	100	10	110
TOTAL	5,140	600	5,740	740	130	870

RATINGS	
WO	650
WO2	580
CPO	3,340
PO	3,620
LDG	4,230
AB	7,280
TOTAL	19,690

* Please note that ~ appears where there are 5 individuals or less due to the Data Protection Act 1998

7. UK Regular Naval Service Females as a percentage of each rank group at 1 Apr 2010

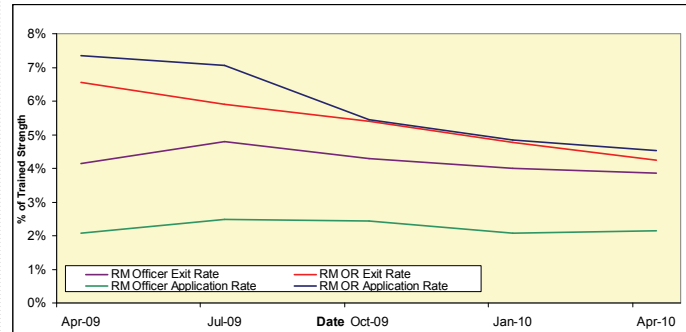


8. RN/RM & Civilian TLB Trained Strength at 1 Apr 2010

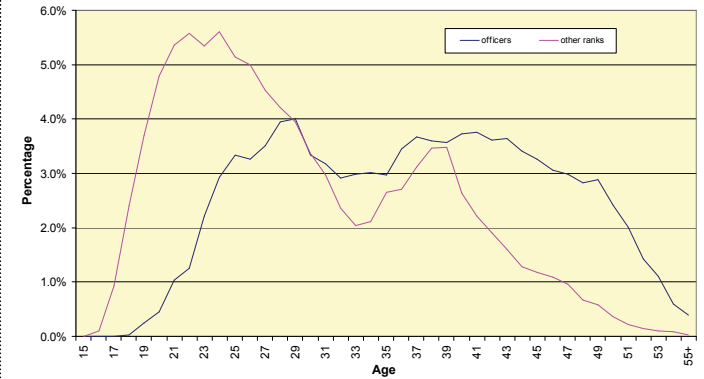
RN/RM		CIVILIAN	
TLBs		TLBs	
NAVY	27,630	NAVY	4,760
CINCFLEET	27,630	CINCFLEET	4,760
UNALLOCATED	-	ARMY	16,480
ARMY	1,160	RAF	8,660
RAF	1,070	CENTRAL	35,920
CENTRAL	5,310	CENTRE	16,650
CENTRE	2,400	CJO	290
CJO	730	DE&S	16,150
DE&S	2,180	CST	-
		DE	2,830
TOTAL	35,170	UNALLOCATED	100
		TOTAL	65,920

Source: GPS05
 Trading Funds civilians are excluded as they are no longer reported on in MOD internal publications
 With effect from 1 Apr 10 CST formally ceased. Approx 90% of personnel moved to Centre TLB, the remainder to DE&S and DSTL

11. RM Voluntary Outflows & Application Rates as % of Trained Strength, 12 Months Ending March 2010



14. Age Distribution- UK Regulars Naval Service 1 April 2010



9. Strength of FTRS and Activated Reserves at 1 April 2010

	MALE	FEMALE	Total
Officers			
Royal Navy	160	20	180
FTRS "Regular"	100	10	110
FTRS "Non-Regular"	30	10	30
Activated Reserves	30	~	40
Royal Marines	20	-	20
FTRS "Regular"	10	-	10
FTRS "Non-Regular"	-	-	~
Activated Reserves	~	-	~
Ratings			
Royal Navy	370	40	400
FTRS "Regular"	180	10	190
FTRS "Non-Regular"	130	20	150
Activated Reserves	60	10	60
Royal Marines	120	-	120
FTRS "Regular"	20	-	20
FTRS "Non-Regular"	60	-	60
Activated Reserves	50	-	50

12. Trained RN/RM VO Applications & Exits 2009/10 to date

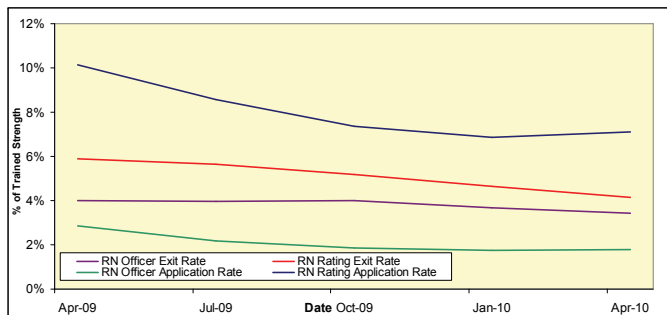
	Applications	Withdrawals	Voluntary Outflow
Royal Navy	880	160	1,110
Officers	100	10	200
Ratings	780	150	910
Royal Marines	300	100	290
Officers	20	~	30
Other Ranks	280	100	260

15. RN/RM Intake for 2009/10 to date

	Intake
TOTAL OFFICERS	510
RN	430
FROM RANKS SUYUY	80
NEW OR RE-ENTRANT	350
RM	80
FROM RANKS SUYUY	20
NEW OR RE-ENTRANT	60
TOTAL RATINGS	3,830
RN	2,530
NEW ENTRANT (OR RE ENTRANT)	2,530
RE-ENTRANT (FROM OFFICER)	-
RM	1,300
NEW OR RE-ENTRANT	1,300
FROM OFFICER	-

This table includes entrants to both the untrained and trained strengths
 There is no longer a requirement for Artificers to be shown separately

10. RN Voluntary Outflows & Application Rates as % of Trained Strength, 12 Months Ending March 2010



13. RN/RM Average Age of Substantive Promotions during the 12-months ending 31st March 2010

ROYAL NAVY	AVERAGE AGE ON PROMOTION	ROYAL MARINES	AVERAGE AGE ON PROMOTION
LDG	27	CPL	28
PO	31	SGT	34
CPO	36	CSGT	39
WO2	40	WO2	42
WO1	43	WO1	41
LT	28	CAPTAIN RM	29
LT CDR	37	MAJOR	36
CDR	41	LT COLONEL	40
CAPTAIN	47	COLONEL	43
CDRE	49	BRIG	~
REAR ADMIRAL	51	MAJ-GENERAL	~

Please note that ~ appears where there are 5 individuals or less in accordance with Data Protection Act 1998

16. Tri-Service Strength¹ by Ethnic Origin² at 1 April 2010

	ROYAL NAVY	ARMY	RAF
TOTAL	38,730^P	108,870^P	44,050^P
ETHNIC MINORITIES	1,270 ^P	10,010 ^P	890 ^P
Percentage Ethnic Minority	3.4% ^P	9.4% ^P	2.1% ^P
White	35,920 ^P	95,980 ^P	40,950 ^P
Unknown	1,540 ^P	2,890 ^P	2,210 ^P

1. UK Regular Forces comprises trained and untrained personnel and excludes Gurkhas, Full Time Reserve Service personnel and mobilised reservists.
 2. Ethnic minority percentage figures are based on those with a known ethnic origin. Percentages are calculated from unrounded data.
 3. p denotes provisional. Data is provisional due to ongoing validation of data from the Joint Personnel Administration System
 Source: UK Armed Forces Quarterly Manning Report.