

# Naval Service Quarterly Pocket Brief

## October 2012

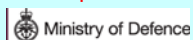
Produced by DASA (Navy)  
Building 33  
Whale Island  
Portsmouth  
PO2 8ER



Telephone: 02392 547430  
Fax: 02392 547431

N.B. Sum of parts may not equal totals due to rounding

Due to the introduction of JPA to the Royal Naval Service during October 2006, all data are provisional and subject to revision.



### 2. Strength Against Liability at 1 October 2012

	Total Strength	Officers		Ratings	
		RN	RM	RN	RM
Regular Trained Strength	32,020	5,530	760	19,610	6,120
Full Time Reservists (FTRS) *Regular*	120	50	-	60	20
Liability <sup>1</sup>	32,660	5,440	730	20,210	6,290
Surplus/Deficit <sup>2</sup>	(530)	140	40	(550)	(150)
Untrained Strength	2,670	720	90	1,030	830
Full Time Reservists (FTRS) *Non-Regular*	230	30	-	170	30
<b>Total Regular Trained &amp; Untrained Strength</b>	<b>34,680</b>	<b>6,250</b>	<b>850</b>	<b>20,640</b>	<b>6,940</b>

	Total Trained and Untrained Strength	Trained Strength	FTRS "Regular"	Historic Liability <sup>1</sup>	Surplus/Deficit <sup>2</sup>	Untrained Strength	FTRS "Non-Regular"
01-Apr-12	35,540	33,190	100	34,800	(1,510)	2,360	260
01-Apr-11	37,660	35,250	180	35,700	(270)	2,410	250
01-Apr-10	38,730	35,170	330	35,790	(290)	3,560	-
01-Apr-09	38,340	34,400	620	35,760	(740)	3,940	-

<sup>1</sup>The latest liability is 1\_12 scaled to DP12, provided by DNPS

<sup>2</sup>Surplus/Deficit = Trained Strength + FTRS "Regular" - Liability.

### 5. Trained Regular Strength by Branch at 1 October 2012

RN Officers		RN Ratings		RM Officers	
Warfare	2,740	Warfare XR	4,870	GD	750
Engineer	1,730	Warfare SM	820	Band	10
Logistics	540	Logistics	2,780	Career	-
Medical	330	Medical	700	Total	<b>760</b>
Dental	60	Engineering GS	4,280		
Chaplain	60	Engineering SM	2,100		
No Specialisation	-	Warfare Aviation	720		
Family	-	Air Engineering	3,160		
Total	<b>5,460</b>	Careers	-	GD	5,770
		Not Specified	-	Band	350
		Total	<b>19,430</b>	Careers	-
				Total	<b>6,120</b>

RM Other Ranks	
GD	5,770
Band	350
Careers	-
Total	<b>6,120</b>

QARNNS Officers	70
QARNNS Ratings	170

Royal Navy Total	
Total Officers	6,290
Total Ratings	25,730
Total	<b>32,020</b>

### CONTACTS

Produced by:

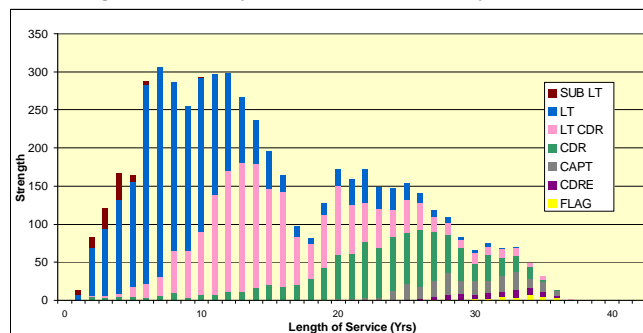
DASA (Navy)  
Walcheren Building (33)  
Whale Island  
Portsmouth  
Hampshire  
PO2 8ER

DASA welcome feedback on our statistical products. If you have any comments or questions about this publication or about DASA statistics in general, you can contact us as follows:

Email [DASA-enquiries-mailbox@mod.uk](mailto:DASA-enquiries-mailbox@mod.uk)

or visit our website at [www.dasa.mod.uk](http://www.dasa.mod.uk)

### 3. Trained Regular RN Officers by Paid Rank and LOS Since Entry at 1 October 2012



### 6. Total RN Regular Strength by Gender at 1 October 2012

Officers	Trained			Untrained		
	Male	Female	Total	Male	Female	Total
FLAG OFF	40	-	40	-	-	-
CDRE	70	-	70	-	-	-
CAPT	240	-	240	-	-	-
CDR	920	40	970	-	-	-
LT CDR	1,610	190	1,800	-	-	-
LT	1,970	350	2,320	210	30	240
SUB LT	80	10	90	360	60	420
MID	-	-	-	50	10	60
<b>Total</b>	<b>4,930</b>	<b>590</b>	<b>5,530</b>	<b>620</b>	<b>100</b>	<b>720</b>

Ratings						
WO	550	20	580	-	-	-
WO2	490	-	500	-	-	-
CPO	2,830	180	3,010	-	-	-
PO	3,160	310	3,470	-	-	-
LDG	4,020	690	4,710	-	-	-
AB	6,310	1,030	7,350	910	120	1,030
<b>Total</b>	<b>17,370</b>	<b>2,240</b>	<b>19,610</b>	<b>910</b>	<b>120</b>	<b>1,030</b>

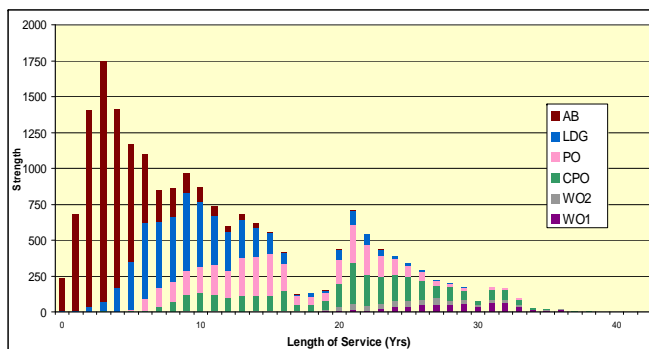
\* Please note that - appears where there are 5 individuals or less due to the Data Protection Act 1998

### 1. Trained Manpower Accounts at 1 October 2012

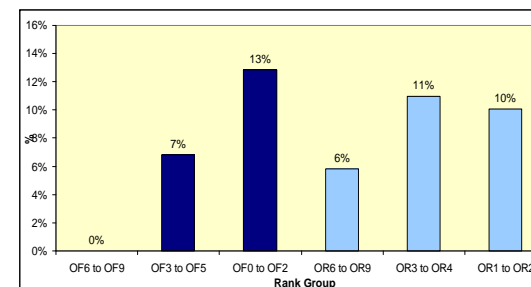
	Trained strength at 1 April 2012	GTS 2012/13	Entrants direct to trained strength 2012/13	Trained to untrained strength 2012/13	Trained wastage 2012/13	(Strength April point + inflow) - outflow	Trained strength at 1 October 2012
Officers	6,370	180	-	-	260	6,290	6,290
Ratings	26,820	660	20	-	1,780	25,730	25,730

GTS refers to Gains to Trained Strength and so does not include sideways entrants or trained FTRS intake. Trained FTRS intake are shown as entrants direct to the trained strength.

### 4. Trained Regular RN Ratings by Paid Rank and LOS Since Entry at 1 October 2012



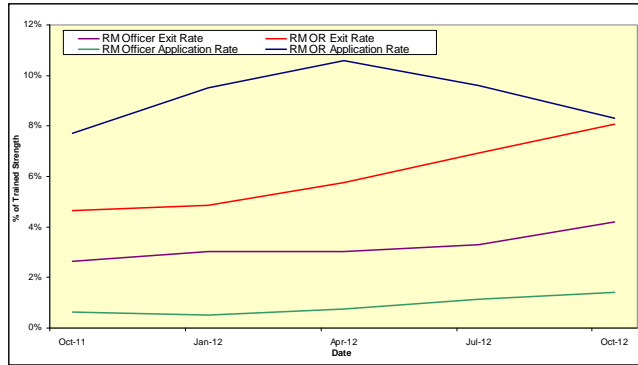
### 7. UK Regular Naval Service Females as a percentage of each paid rank group at 1 October 2012



8. RN/RM Top Level Budget Trained Strength at 1 October 2012

Top Level Budget	
Navy Command	25,670
Navy Command Unallocated	25,660
Land Command	1,080
Air Command	520
Central	4,750
Centre	730
CJO	2,190
DE&S	1,820
<b>Total</b>	<b>32,020</b>

11. RM Voluntary Outflows and Application Rates as % of Trained Strength, 12 Months Ending 30 September 2012



14. Age Distribution - UK Regulars Naval Service 1 April 2012



9. Strength of FTRS and Activated Reservists at 1 October 2012

	Male	Female	Total
<b>Officers</b>			
Royal Navy	90	20	110
FTRS "Regular"	40	10	50
FTRS "Non-Regular"	20	10	30
Activated Reservists	30	10	40
Royal Marines	10	-	10
FTRS "Regular"	-	-	-
FTRS "Non-Regular"	-	-	-
Activated Reservists	-	-	-
<b>Ratings</b>			
Royal Navy	220	20	240
FTRS "Regular"	60	-	60
FTRS "Non-Regular"	150	20	170
Activated Reservists	20	-	20
Royal Marines	50	-	50
FTRS "Regular"	-	-	-
FTRS "Non-Regular"	30	-	30
Activated Reservists	20	-	20

12. Trained VO Applications and Exits 2012/13 to date

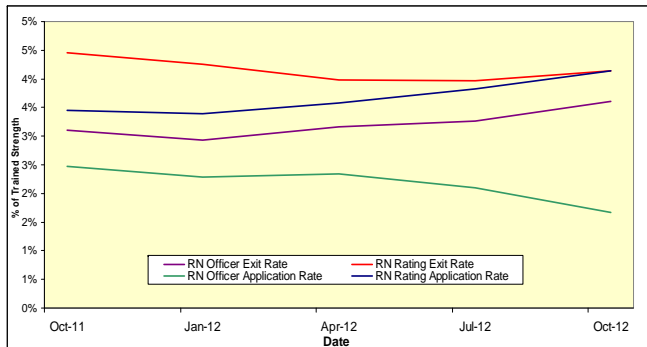
		Royal Navy		Royal Marine	
		Officers	Ratings	Officers	Ratings
VO Apps	Applications	50	480	10	180
	Withdrawals	-	20	-	90
Outflows	Voluntary Outflows	110	520	20	320
	Time Expiry	80	240	10	80
	Other	40	520	10	100
	<b>Total Exits</b>	<b>230</b>	<b>1,280</b>	<b>40</b>	<b>500</b>

15. Intake for 2012/13 to date

	Intake
<b>Total Officers</b>	<b>210</b>
RN	160
From Ranks SUYUY	30
New Entrant/Re-entrant/From Another Service/From Long Term Absentee	130
RM	50
From Ranks SUYUY	-
New Entrant/Re-entrant/From Another Service/From Long Term Absentee	50
<b>Total Ratings</b>	<b>1,250</b>
RN	680
New Entrant/Re-entrant/From Another Service/From Long Term Absentee	680
Re-entrant (From Officer)	-
RM	570
New Entrant/Re-entrant/From Another Service/From Long Term Absentee	570
Re-entrant (From Officer)	-

This table includes entrants to both the untrained and trained strengths

10. RN Voluntary Outflows and Application Rates as % of Trained Strength, 12 Months Ending 30 September 2012



13. Average Age of Substantive Promotions during the 12 months ending 30 September 2012

Royal Navy	Average Age on Promotion	Royal Marines	Average Age on Promotion
LDG	27	CPL	29
PO	32	SGT	34
CPO	35	CSGT	39
WO2	42	WO2	41
WO1	44	WO1	43
LT	28	CAPTAIN RM	28
LT CDR	36	MAJOR	35
CDR	42	LT COLONEL	41
CAPTAIN	47	COLONEL	43
CDRE	49	BRIG	49
REAR ADMIRAL	50	MAJ-GENERAL	-

Please note that - appears where there are 5 individuals or less in accordance with Data Protection Act 1998

16. Tri-Service Strength<sup>1</sup> by Ethnic Origin<sup>2</sup> at 1 October 2012

	Royal Navy	Army	RAF
<b>Total</b>	<b>34,680</b>	<b>102,760</b>	<b>38,500</b>
Ethnic Minorities	1,200	10,360	750
Percentage Ethnic Minority	3.5%	10.1%	2.0%
White	33,010	92,150	36,070
Unknown	470	250	1,670

1. UK Regular Forces comprises trained and untrained personnel and excludes Gurkhas, Full Time Reserve Service personnel and mobilised reservists.

2. Ethnic minority percentage figures are based on those with a known ethnic origin. Percentages are calculated from unrounded data.