

# Naval Service Quarterly Pocket Brief

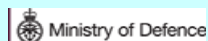
## April 2013

Defence Statistics (Navy)  
223, MP 2.1  
West Battery  
Whale Island  
Portsmouth  
PO2 8DX

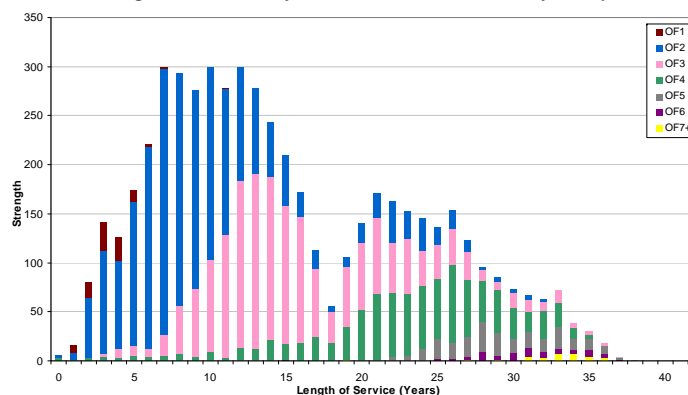


Telephone: 02392 625955  
Email: DASA-enquiries-mailbox@mod.uk  
www.dasa.mod.uk

**N.B.** Sum of parts may not equal totals due to rounding  
'-' appears when there are five individuals or less i.o.w. DPA '98



3. Trained Regular RN Officers by Paid Rank and LOS Since Entry at 1 April 2013



6. Regular RN Strength by Gender at 1 April 2013

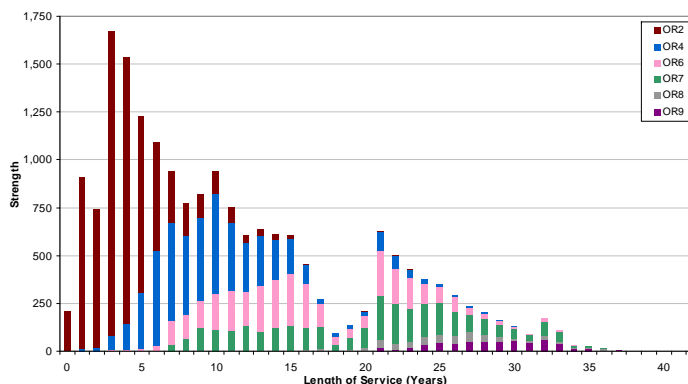
Officers	Trained			Untrained		
	Male	Female	Total	Male	Female	Total
OF7+	30	-	30	-	-	-
OF6	60	-	60	-	-	-
OF5	240	-	240	-	-	-
OF4	880	40	920	-	-	-
OF3	1,620	190	1,800	-	-	-
OF2	1,900	350	2,260	180	20	200
OF1	80	10	90	380	60	440
OFD	-	-	-	60	10	70
<b>Total</b>	<b>4,820</b>	<b>600</b>	<b>5,420</b>	<b>620</b>	<b>90</b>	<b>710</b>
Ratings						
OR9	530	20	550	-	-	-
OR8	480	-	480	-	-	-
OR7	2,720	180	2,900	-	-	-
OR6	2,960	290	3,240	-	-	-
OR4	3,970	670	4,640	-	-	-
OR2	6,170	1,020	7,190	1,020	110	1,130
<b>Total</b>	<b>16,830</b>	<b>2,180</b>	<b>19,010</b>	<b>1,030</b>	<b>110</b>	<b>1,130</b>

1. Trained Royal Naval Service (RNS) Accounts at 1 April 2013

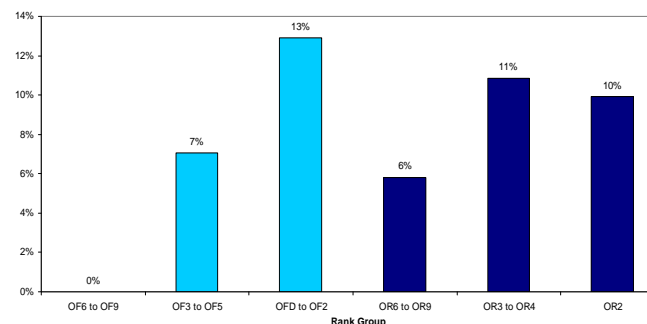
	Trained strength at 1 April 2012	GTS 2012/13	Entrants direct to trained strength 2012/13	Trained wastage 2012/13	Trained strength at 1 April 2013
<b>Officers</b>	6,370	340	10	540	6,180
<b>Ratings</b>	26,820	1,510	60	3,290	25,100

GTS refers to Gains to Trained Strength and so does not include sideways entrants or trained FTRS intake. Trained FTRS intake are shown as entrants direct to the trained strength.

4. Trained Regular RN Ratings by Paid Rank and LOS Since Entry at 1 April 2013



7. Regular RNS Females as a percentage of each paid rank group at 1 April 2013



2. RNS Strength Against Liability at 1 April 2013

	Officers		Ratings		Total Strength
	RN	RM	RN	RM	
Regular Trained Strength	5,420	760	19,010	6,090	31,280
Full Time Reservists (FTRS) "Regular"	50	10	60	20	150
Liability <sup>1</sup>	5,100	710	18,700	6,010	30,530
Surplus/(Deficit) <sup>2</sup>	370	60	370	100	890
Untrained Strength	710	50	1,130	790	2,680
Full Time Reservists (FTRS) "Non-Regular"	40	-	170	30	250
<b>Total Regular Trained &amp; Untrained Strength</b>	<b>6,130</b>	<b>810</b>	<b>20,140</b>	<b>6,870</b>	<b>33,960</b>

<sup>1</sup>The latest liability is 2.12 scaled to DP12, provided by CNPS

<sup>2</sup>Surplus/Deficit = Trained Strength + FTRS "Regular" - Liability.

5. Trained Regular Strength by Branch at 1 April 2013

RN Officers		RN Ratings	
Warfare	2,710	Warfare GS	4,730
Engineer	1,690	Warfare SM	790
Logistics	500	Warfare FAA	680
Medical	330	Engineering GS	4,100
Dental	60	Engineering SM	2,060
QARNNS	70	Engineering FAA	3,110
Chaplain	60	Logistics	2,680
		Medical	700
		QARNNS	170
<b>Total</b>	<b>5,420</b>	<b>Total</b>	<b>19,010</b>
RM Officers		RM Ratings	
General Service	750	General Service	5,740
Band Service	10	Band Service	340
<b>Total</b>	<b>760</b>	<b>Total</b>	<b>6,090</b>
<b>Total Officers</b>	<b>6,180</b>	<b>Total Ratings</b>	<b>25,100</b>

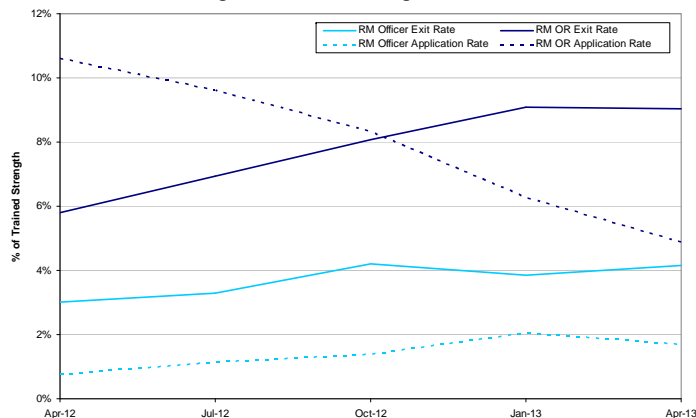
8. Strength of FTRS and Called Out Reservists at 1 April 2013

	Male	Female	Total
<b>Officers</b>			
<b>Royal Navy</b>	<b>110</b>	<b>20</b>	<b>130</b>
FTRS "Regular"	40	10	50
FTRS "Non-Regular"	40	10	40
Called Out Reservists	30	10	30
<b>Royal Marines</b>	<b>10</b>	<b>-</b>	<b>10</b>
FTRS "Regular"	10	-	10
FTRS "Non-Regular"	-	-	-
Called Out Reservists	-	-	-
<b>Ratings</b>			
<b>Royal Navy</b>	<b>240</b>	<b>20</b>	<b>260</b>
FTRS "Regular"	60	-	60
FTRS "Non-Regular"	150	20	170
Called Out Reservists	30	-	30
<b>Royal Marines</b>	<b>50</b>	<b>-</b>	<b>50</b>
FTRS "Regular"	-	-	-
FTRS "Non-Regular"	30	-	30
Called Out Reservists	20	-	20

### 9. RNS Top Level Budget Trained Strength at 1 April 2013

Top Level Budget	
<b>Navy Command</b>	<b>25,110</b>
Navy Command	25,100
Unallocated	~
<b>Land Command</b>	<b>1,040</b>
<b>Air Command</b>	<b>510</b>
<b>Central</b>	<b>4,620</b>
Centre	690
CJO	2,290
DE&S	1,640
<b>Total</b>	<b>31,280</b>

### 12. RM Voluntary Outflows and Application Rates as % of Trained Strength, during the 12 Months Ending 31 March 2013



### 15. Intake from 1 April 2012 to 31 March 2013

	Intake
<b>Total Officers</b>	<b>350</b>
<b>RN</b>	<b>290</b>
From Ranks SUY/UY	50
New Entrant/Re-entrant/From Another Service/From Long Term Absentee	240
<b>RM</b>	<b>60</b>
From Ranks SUY/UY	10
New Entrant/Re-entrant/From Another Service/From Long Term Absentee	50
<b>Total Ratings</b>	<b>2,540</b>
<b>RN</b>	<b>1,430</b>
New Entrant/Re-entrant/From Another Service/From Long Term Absentee	1,430
Re-entrant (From Officer)	-
<b>RM</b>	<b>1,110</b>
New Entrant/Re-entrant/From Another Service/From Long Term Absentee	1,110
Re-entrant (From Officer)	-

This table includes entrants to both the untrained and trained strengths

### 10. Trained VO Applications and Exits from 1 April 2012 to 31 March 2013

		Royal Navy		Royal Marine	
		Officers	Ratings	Officers	Ratings
VO Apps	Applications	100	970	10	300
	Withdrawals	~	40	-	130
Outflows	Voluntary Outflows	200	1,060	30	560
	Time Expiry	150	530	20	140
	Other	110	800	30	200
<b>Total Exits</b>		<b>460</b>	<b>2,390</b>	<b>80</b>	<b>900</b>

### 13. Average Age upon Promotion to Substantive Rank during the 12 months ending 31 March 2013

Royal Navy	Average Age on Promotion	Royal Marines	Average Age on Promotion
OF7	50	OF7	~
OF6	49	OF6	48
OF5	47	OF5	43
OF4	42	OF4	41
OF3	36	OF3	35
OF2	28	OF2	28
OR9	44	OR9	43
OR8	42	OR8	41
OR7	34	OR7	39
OR6	33	OR6	34
OR4	27	OR4	29

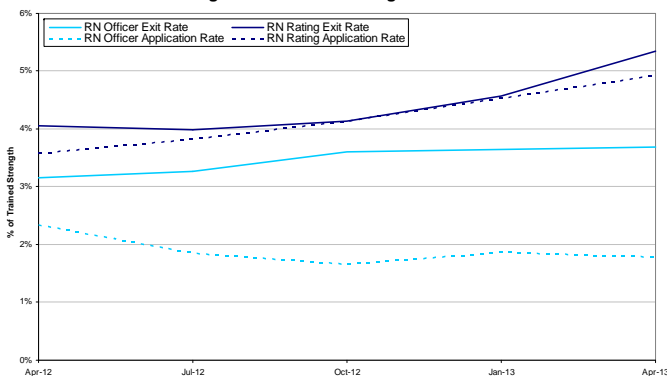
### 16. Tri-Service Strength<sup>1</sup> by Ethnic Origin<sup>2</sup> at 1 April 2013

	Royal Navy	Army	RAF
<b>Total</b>	<b>33,960</b>	<b>99,730</b>	<b>37,030</b>
Ethnic Minorities	1,170	10,140	730
Percentage Ethnic Minority	3.5%	10.2%	2.0%
White	32,360	89,350	34,760
Unknown	430	240	1,550

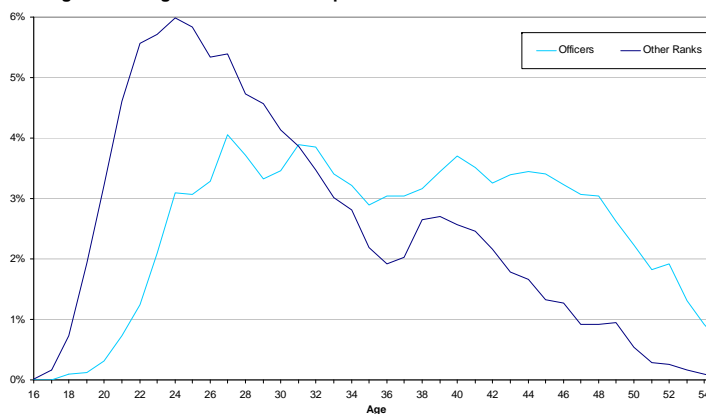
1. UK Regular Forces comprises trained and untrained personnel and excludes Gurkhas, FTRS personnel and mobilised reservists.

2. Ethnic minority percentage figures are based on those with a known ethnic origin. Percentages are calculated from unrounded data.

### 11. RN Voluntary Outflows and Application Rates as % of Trained Strength during the 12 Months Ending 31 March 2013



### 14. Regular RNS Age Distribution at 1 April 2013



### Glossary

TERM	DEFINITION
Royal Naval Service (RNS)	All personnel in the Royal Navy (RN) and the Royal Marines (RM)
Liability	This refers to the requirement for specified types of trained military manpower.
Trained Strength	The number service personnel who have completed phase 2 training having reached training performance standard (TPS).
Untrained Strength	Number of serving military personnel who have yet to complete phase 2 training.
Gains to Trained Strength (GTS)	The number of personnel who successfully complete phase 2 training in a particular time frame.
Voluntary Outflow (VO)	All exits from trained personnel which are generated by the individual before their time expiry.
Surplus / Deficit	The difference between liability and strength.
FTRS Regular Personnel	Full time reserve service personnel counted against the regular liability.
FTRS Non-Regular Personnel	Full time reserve service personnel not counted against the regular liability.