

Naval Service Quarterly Pocket Brief

January 2013

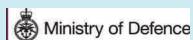
Produced by DASA (Navy)

223, MP 2.1
West Battery
Whale Island
Portsmouth
PO2 8DX



Telephone: 02392 625955

N.B. Sum of parts may not equal totals due to rounding



2. Strength Against Liability at 1 January 2013

| | Total Strength | Officers | | Ratings | |
|---|----------------|--------------|------------|---------------|--------------|
| | | RN | RM | RN | RM |
| Regular Trained Strength | 31,680 | 5,440 | 770 | 19,400 | 6,070 |
| Full Time Reservists (FTRS) "Regular" | 140 | 50 | 10 | 60 | 20 |
| Liability ¹ | 31,600 | 5,270 | 720 | 19,450 | 6,170 |
| Surplus/Deficit ² | 220 | 220 | 60 | 10 | (70) |
| Untrained Strength | 2,610 | 730 | 50 | 1,000 | 840 |
| Full Time Reservists (FTRS) "Non-Regular" | 240 | 40 | ~ | 170 | 30 |
| Total Regular Trained & Untrained Strength | 34,290 | 6,160 | 820 | 20,400 | 6,910 |

| | Total Trained and Untrained Strength | Trained Strength | FTRS "Regular" | Historic Liability ¹ | Surplus/Deficit ² | Untrained Strength | FTRS "Non-Regular" |
|-----------|--------------------------------------|------------------|----------------|---------------------------------|------------------------------|--------------------|--------------------|
| 01-Apr-12 | 35,540 | 33,190 | 100 | 34,800 | (1,510) | 2,360 | 260 |
| 01-Apr-11 | 37,660 | 35,250 | 180 | 35,700 | (270) | 2,410 | 250 |
| 01-Apr-10 | 38,730 | 35,170 | 330 | 35,790 | (290) | 3,560 | - |
| 01-Apr-09 | 38,340 | 34,400 | 620 | 35,760 | (740) | 3,940 | - |

¹The latest liability is 1_12 scaled to DP12, provided by DNPS

²Surplus/Deficit = Trained Strength + FTRS "Regular" - Liability.

5. Trained Regular Strength by Branch at 1 January 2013

| RN Officers | | RN Ratings | | RM Officers | |
|-------------------|--------------|------------------|---------------|-------------|--------------|
| Warfare | 2,710 | Warfare XR | 4,820 | GD | 760 |
| Engineer | 1,710 | Warfare SM | 810 | Band | 10 |
| Logistics | 510 | Logistics | 2,750 | Career | - |
| Medical | 320 | Medical | 690 | Total | 770 |
| Dental | 60 | Engineering GS | 4,220 | | |
| Chaplain | 60 | Engineering SM | 2,120 | | |
| No Specialisation | - | Warfare Aviation | 680 | | |
| Family | - | Air Engineering | 3,140 | | |
| Total | 5,370 | Careers | - | GD | 5,730 |
| | | Not Specified | - | Band | 340 |
| | | Total | 19,230 | Careers | - |
| | | | | Total | 6,070 |

| RM Other Ranks | |
|----------------|--------------|
| GD | 5,730 |
| Band | 340 |
| Careers | - |
| Total | 6,070 |

| QARNNS Officers | |
|-----------------|----|
| | 70 |

| QARNNS Ratings | |
|----------------|-----|
| | 170 |

| Royal Navy Total | |
|------------------|---------------|
| Total Officers | 6,200 |
| Total Ratings | 25,470 |
| Total | 31,680 |

CONTACTS

Produced by:

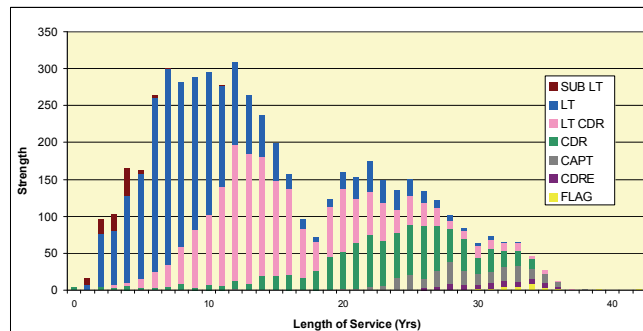
DASA (Navy)
Room 223, MP2.1
West Battery
Whale Island
Portsmouth
PO2 8DX

DASA welcome feedback on our statistical products. If you have any comments or questions about this publication or about DASA statistics in general, you can contact us as follows:

Email DASA-enquiries-mailbox@mod.uk

or visit our website at www.dasa.mod.uk

3. Trained Regular RN Officers by Paid Rank and LOS Since Entry at 1 January 2013



6. Total RN Regular Strength by Gender at 1 January 2013

| Officers | Trained | | | Untrained | | |
|--------------|--------------|------------|--------------|------------|------------|------------|
| | Male | Female | Total | Male | Female | Total |
| FLAG OFF | 40 | - | 40 | - | - | - |
| CDRE | 70 | - | 70 | - | - | - |
| CAPT | 240 | ~ | 240 | - | - | - |
| CDR | 880 | 40 | 930 | - | - | - |
| LT CDR | 1,640 | 190 | 1,830 | - | - | - |
| LT | 1,900 | 340 | 2,240 | 210 | 30 | 240 |
| SUB LT | 90 | 10 | 100 | 370 | 60 | 430 |
| MID | - | - | - | 50 | 10 | 60 |
| Total | 4,850 | 590 | 5,440 | 630 | 100 | 730 |

| Ratings | |
|--------------|---------------|
| WO | 540 |
| WO2 | 500 |
| CPO | 2,790 |
| PO | 3,070 |
| LDG | 4,000 |
| AB | 6,300 |
| Total | 17,200 |

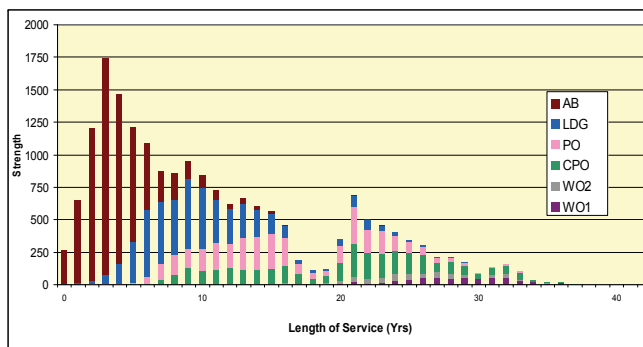
* Please note that ~ appears where there are 5 individuals or less due to the Data Protection Act 1998

1. Trained Manpower Accounts at 1 January 2013

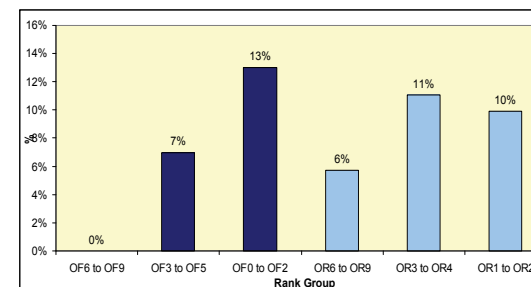
| | Trained strength at 1 April 2012 | GTS 2012/13 | Entrants direct to trained strength 2012/13 | Trained to untrained strength 2012/13 | Trained wastage 2012/13 | (Strength April point + inflow) - outflow | Trained strength at 1 January 2013 |
|----------|----------------------------------|-------------|---|---------------------------------------|-------------------------|---|------------------------------------|
| Officers | 6,370 | 260 | ~ | - | 430 | 6,200 | 6,200 |
| Ratings | 26,820 | 1,100 | 40 | - | 2,480 | 25,470 | 25,470 |

GTS refers to Gains to Trained Strength and so does not include sideways entrants or trained FTRS intake. Trained FTRS intake are shown as entrants direct to the trained strength.

4. Trained Regular RN Ratings by Paid Rank and LOS Since Entry at 1 January 2013



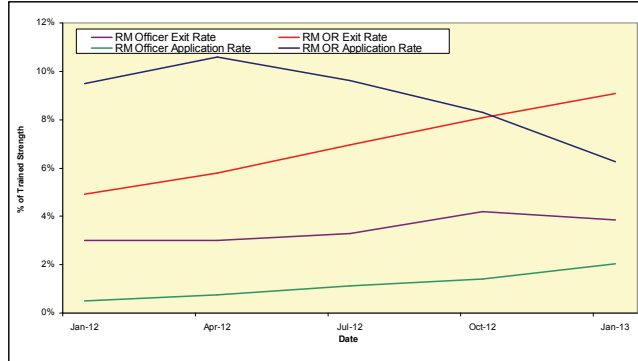
7. UK Regular Naval Service Females as a percentage of each paid rank group at 1 January 2013



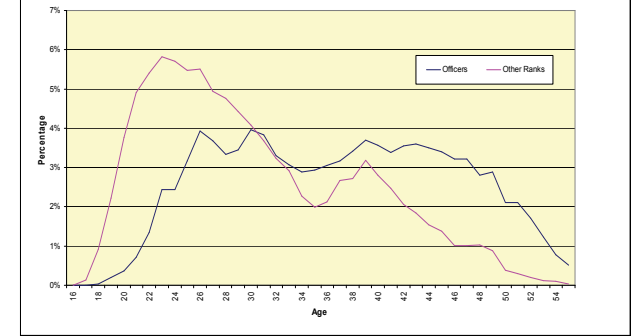
8. RN/RM Top Level Budget Trained Strength at 1 January 2013

| Top Level Budget | |
|--------------------------|---------------|
| Navy Command | 25,450 |
| Navy Command Unallocated | ~ |
| Land Command | 1,060 |
| Air Command | 520 |
| Central | 4,650 |
| Centre | 730 |
| CJO | 2,180 |
| DE&S | 1,730 |
| Total | 31,680 |

11. RM Voluntary Outflows and Application Rates as % of Trained Strength, 12 Months Ending 31 December 2012



14. Age Distribution - UK Regulars Naval Service 1 April 2012



9. Strength of FTRS and Activated Reservists at 1 January 2013

| | Male | Female | Total |
|----------------------|------|--------|-------|
| Officers | | | |
| Royal Navy | 100 | 20 | 120 |
| FTRS "Regular" | 40 | 10 | 50 |
| FTRS "Non-Regular" | 30 | 10 | 40 |
| Activated Reservists | 30 | 10 | 40 |
| Royal Marines | 10 | - | 10 |
| FTRS "Regular" | 10 | - | 10 |
| FTRS "Non-Regular" | - | - | - |
| Activated Reservists | - | - | - |
| Ratings | | | |
| Royal Navy | 230 | 20 | 260 |
| FTRS "Regular" | 60 | - | 60 |
| FTRS "Non-Regular" | 150 | 20 | 170 |
| Activated Reservists | 30 | - | 30 |
| Royal Marines | 50 | - | 50 |
| FTRS "Regular" | - | - | - |
| FTRS "Non-Regular" | 30 | - | 30 |
| Activated Reservists | 20 | - | 20 |

12. Trained VO Applications and Exits 2012/13 to date

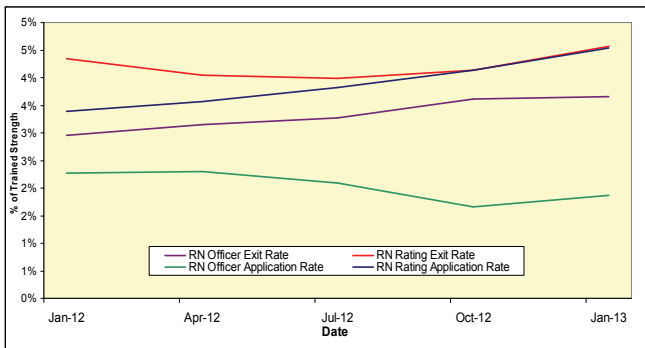
| | | Royal Navy | | Royal Marine | |
|----------|--------------------|------------|--------------|--------------|------------|
| | | Officers | Ratings | Officers | Ratings |
| VO Apps | Applications | 80 | 700 | 10 | 230 |
| | Withdrawals | ~ | 30 | - | 110 |
| Outflows | Voluntary Outflows | 160 | 730 | 20 | 440 |
| | Time Expiry | 110 | 340 | 20 | 120 |
| | Other | 100 | 700 | 20 | 160 |
| | Total Exits | 360 | 1,770 | 70 | 710 |

15. Intake for 2012/13 to date

| | Intake |
|---|--------------|
| Total Officers | 270 |
| RN | 220 |
| From Ranks SUYUY | 30 |
| New Entrant/Re-entrant/From Another Service/From Long Term Absentee | 190 |
| RM | 50 |
| From Ranks SUYUY | - |
| New Entrant/Re-entrant/From Another Service/From Long Term Absentee | 50 |
| Total Ratings | 1,850 |
| RN | 990 |
| New Entrant/Re-entrant/From Another Service/From Long Term Absentee | 990 |
| Re-entrant (From Officer) | - |
| RM | 860 |
| New Entrant/Re-entrant/From Another Service/From Long Term Absentee | 860 |
| Re-entrant (From Officer) | - |

This table includes entrants to both the untrained and trained strengths

10. RN Voluntary Outflows and Application Rates as % of Trained Strength, 12 Months Ending 31 December 2012



13. Average Age of Substantive Promotions during the 12 months ending 31 December 2012

| Royal Navy | Average Age on Promotion | Royal Marines | Average Age on Promotion |
|--------------|--------------------------|---------------|--------------------------|
| LDG | 27 | CPL | 29 |
| PO | 33 | SGT | 34 |
| CPO | 35 | CSGT | 39 |
| WO2 | 42 | WO2 | 41 |
| WO1 | 44 | WO1 | 43 |
| LT | 28 | CAPTAIN RM | 28 |
| LT CDR | 36 | MAJOR | 35 |
| CDR | 42 | LT COLONEL | 41 |
| CAPTAIN | 47 | COLONEL | 43 |
| CDRE | 49 | BRIG | 49 |
| REAR ADMIRAL | 50 | MAJ-GENERAL | ~ |

Please note that ~ appears where there are 5 individuals or less in accordance with Data Protection Act 1998

16. Tri-Service Strength¹ by Ethnic Origin² at 1 January 2013

| | Royal Navy | Army | RAF |
|-----------------------------------|---------------|---------------|---------------|
| Total | 34,290 | 99,740 | 37,460 |
| Ethnic Minorities | 1,180 | 10,100 | 730 |
| <i>Percentage Ethnic Minority</i> | <i>3.5%</i> | <i>10.2%</i> | <i>2.0%</i> |
| White | 32,670 | 89,420 | 35,150 |
| Unknown | 440 | 210 | 1,580 |

1. UK Regular Forces comprises trained and untrained personnel and excludes Gurkhas, Full Time Reserve Service personnel and mobilised reservists.

2. Ethnic minority percentage figures are based on those with a known ethnic origin. Percentages are calculated from unrounded data.