

Naval Service Quarterly Pocket Brief April 2012

Produced by DASA (Navy)
Building 33
Whale Island
Portsmouth
PO2 8ER



Telephone: 02392 547426
Internal: 93832 7426
Fax: 02392 547431
E-mail: navy@dasa.mod.uk

N.B. Sum of parts may not equal totals due to rounding

Due to the introduction of JPA to the Royal Naval Service during October 2006, all data are provisional and subject to revision.



2. Strength Against Liability at 1 April 2012

	Total Strength	Officers		Ratings	
		RN	RM	RN	RM
Regular Trained Strength	33,190	5,580	790	20,390	6,420
Full Time Reservists (FTRS) "Regular" Liability ^{1,2}	100	40	~	60	~
Liability ^{1,2}	34,800	5,760	750	21,760	6,540
Surplus/Deficit ³	(1,520)	(140)	50	(1,310)	(120)
Untrained Strength	2,360	770	50	910	620
Full Time Reservists (FTRS) "Non-Regular"	260	30	~	160	60
Total Regular Trained & Untrained Strength	35,540	6,350	840	21,300	7,050

	Total Trained and Untrained Strength	Trained Strength	FTRS "Regular"	Historic Liability ^{1,2}	Surplus/Deficit ³	Untrained Strength	FTRS "Non-Regular"
01-Apr-12	35,540	33,190	100	34,800	(1,510)	2,360	260
01-Apr-11	37,660	35,250	180	35,700	(270)	2,410	250
01-Apr-10	38,730	35,170	330	35,790	(290)	3,560	-
01-Apr-09	38,340	34,400	620	35,760	(740)	3,940	-

¹The term "Liability" replaces the term "Requirement"

²The latest liability is 2a_11 scaled to DP11, provided by DNPS

³Surplus/Deficit = Trained Strength + FTRS "Regular" - Liability.

5. Trained Regular Strength by Branch at 1 April 2012

RN Officers		RN Ratings ¹		RM Officers	
Warfare	2,750	Warfare XR	5,150	GD	780
Engineer	1,740	Warfare SM	830	Band	10
Logistics	560	Logistics	2,890	Career	-
Medical	350	Medical	730	Total	790
Dental	60	Engineering GS	4,490		
Chaplain	60	Engineering SM	2,130		
No Specialisation	-	Warfare Aviation	750		
Family	-	Air Engineering	3,260		
Total	5,510	Careers	-	GD	6,080
		Not Specified	-	Band	340
		Total	20,220	Careers	-
				Total	6,420

RM Other Ranks	
GD	6,080
Band	340
Careers	-
Total	6,420

QARNNS Officers	
QARNNS Officers	70
QARNNS Ratings	180

Royal Navy Total	
Total Officers	6,370
Total Ratings	26,820
Total	33,190

¹Artificers have been allocated to their appropriate Branches

CONTACTS

Produced by:

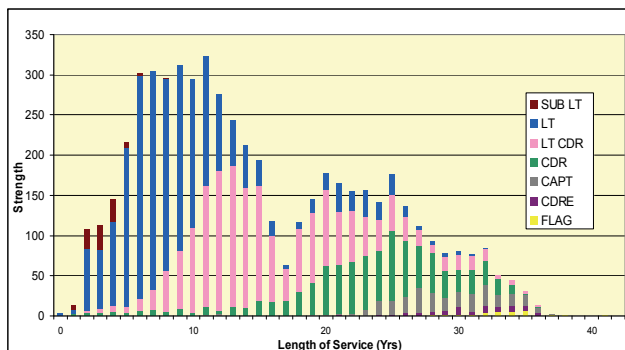
DASA (Navy)
Walcheren Building (33)
Whale Island
Portsmouth
Hampshire
PO2 8ER

DASA welcome feedback on our statistical products. If you have any comments or questions about this publication or about DASA statistics in general, you can contact us as follows:

Email DASA-enquiries-mailbox@mod.uk

or visit our website at www.dasa.mod.uk

3. Trained Regular RN Officers by Paid Rank and LOS Since Entry at 1 April 2012



6. Total RN Regular Strength by Gender at 1 April 2012

Officers	Trained			Untrained		
	Male	Female	Total	Male	Female	Total
FLAG OFF	30	-	30	-	-	-
CDRE	70	-	70	-	-	-
CAPT	260	~	260	-	-	-
CDR	910	30	950	~	-	~
LT CDR	1,670	190	1,870	-	-	-
LT	1,950	360	2,300	200	30	230
SUB LT	80	10	100	410	60	470
MID	-	-	-	70	10	80
Total	4,980	600	5,580	680	100	770

Ratings	
WO	570
WO2	520
CPO	2,910
PO	3,260
LDG	4,080
AB	6,670
Total	18,020

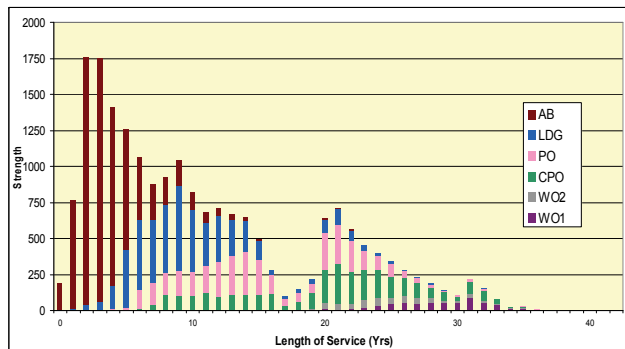
* Please note that ~ appears where there are 5 individuals or less due to the Data Protection Act 1998

1. Trained Manpower Accounts at 1 April 2012

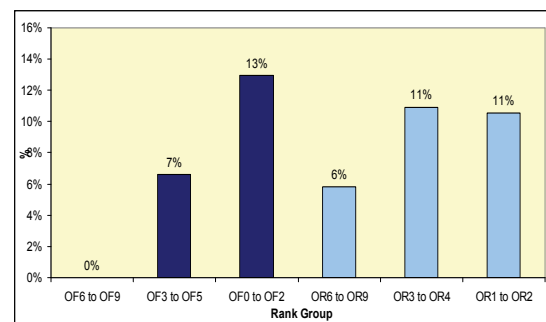
	Trained strength at 1 April 2011	GTS 2011/12	Entrants direct to trained strength 2011/12	Trained to untrained strength 2011/12	Trained wastage 2011/12	(Strength April point + inflow) - outflow	Trained strength at 1 April 2012
Officers	6,550	340	~	10	510	6,370	6,370
Ratings	28,700	1,440	40	10	3,360	26,820	26,820

GTS refers to Gains to Trained Strength and so does not include sideways entrants or trained FTRS intake. Trained FTRS intake are shown as entrants direct to the trained strength.

4. Trained Regular RN Ratings by Paid Rank and LOS Since Entry at 1 April 2012



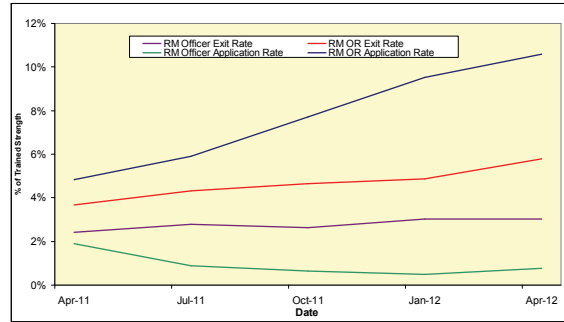
7. UK Regular Naval Service Females as a percentage of each paid rank group at 1 April 2012



8. RN/RM Top Level Budget Trained Strength at 1 April 2012

Top Level Budget	
Navy Command	26,540
Navy Command Unallocated	~
Land Command	1,140
Air Command	560
Central	4,950
Centre	760
CJO	2,240
DE&S	1,960
Total	33,190

11. RM Voluntary Outflows and Application Rates as % of Trained Strength, 12 Months Ending 31 March 2012



14. Age Distribution - UK Regulars Naval Service 1 April 2012



9. Strength of FTRS and Activated Reservists at 1 April 2012

	Male	Female	Total
Officers			
Royal Navy	80	20	100
FTRS "Regular"	40	~	40
FTRS "Non-Regular"	20	10	30
Activated Reservists	20	10	30
Royal Marines	10	-	10
FTRS "Regular"	~	~	~
FTRS "Non-Regular"	~	~	~
Activated Reservists	~	~	~
Ratings			
Royal Navy	210	20	240
FTRS "Regular"	60	-	60
FTRS "Non-Regular"	140	20	160
Activated Reservists	10	~	20
Royal Marines	60	-	60
FTRS "Regular"	-	-	-
FTRS "Non-Regular"	60	-	60
Activated Reservists	10	-	10

12. Trained VO Applications and Exits 2011/12 to date

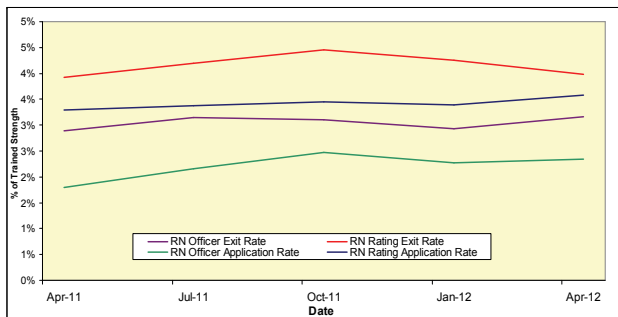
		Royal Navy		Royal Marine	
		Officers	Ratings	Officers	Ratings
VO Apps	Applications	130	770	10	690
	Withdrawals	-	20	-	50
Outflows	Voluntary Outflows	180	860	20	380
	Time Expiry	170	510	30	120
	Other	100	1300	10	200
Total Exits		450	2,670	60	690

15. Intake for 2011/12 to date

	Intake
Total Officers	360
RN	300
From Ranks SUVUY	50
New Entrant/Re-entrant/From Another Service/From Long Term Absentee	240
RM	60
From Ranks SUVUY	20
New Entrant/Re-entrant/From Another Service/From Long Term Absentee	40
Total Ratings	1,980
RN	1,250
New Entrant/Re-entrant/From Another Service/From Long Term Absentee	1,250
Re-entrant (From Officer)	-
RM	730
New Entrant/Re-entrant/From Another Service/From Long Term Absentee	730
Re-entrant (From Officer)	-

This table includes entrants to both the untrained and trained strengths

10. RN Voluntary Outflows and Application Rates as % of Trained Strength, 12 Months Ending 31 March 2012



13. Average Age of Substantive Promotions during the 12 months ending 31 March 2012

Royal Navy	Average Age on Promotion	Royal Marines	Average Age on Promotion
LDG	27	CPL	29
PO	32	SGT	34
CPO	35	CSGT	39
WO2	41	WO2	41
WO1	44	WO1	43
LT	28	CAPTAIN RM	29
LT CDR	36	MAJOR	35
CDR	42	LT COLONEL	40
CAPTAIN	47	COLONEL	44
CDRE	49	BRIG	49
REAR ADMIRAL	50	MAJ-GENERAL	~

Please note that ~ appears where there are 5 individuals or less in accordance with Data Protection Act 1998

16. Tri-Service Strength¹ by Ethnic Origin² at 1 April 2012

	Royal Navy	Army	RAF
Total	35,540	104,250	40,000
Ethnic Minorities	1,230	10,300	770
<i>Percentage Ethnic Minority</i>	3.5%	9.9%	2.0%
White	33,800	93,640	37,310
Unknown	520	310	1,920

1. UK Regular Forces comprises trained and untrained personnel and excludes Gurkhas, Full Time Reserve Service personnel and mobilised reservists.
 2. Ethnic minority percentage figures are based on those with a known ethnic origin. Percentages are calculated from unrounded data.
 P Denotes provisional. Data are provisional due to ongoing validation of data from the Joint Personnel Administration System
 Source: UK Armed Forces Quarterly Manning Report.