

Naval Service Quarterly Pocket Brief January 2012

Produced by DASA (Navy)
Building 33
Whale Island
Portsmouth
PO2 8ER



Telephone: 02392 547426
Internal: 93832 7426
Fax: 02392 547431
E-mail: navy@dasa.mod.uk

N.B. Sum of parts may not equal totals due to rounding

Due to the introduction of JPA to the Royal Naval Service during October 2006, all data are provisional and subject to revision.



2. Strength Against Liability at 1 January 2012

	Total Strength	Officers		Ratings	
		RN	RM	RN	RM
Regular Trained Strength	34,320	5,660	800	21,310	6,560
Full Time Reservists (FTRS) "Regular" Liability ^{1,2}	110	50	~	60	-
Surplus/Deficit ³	(590)	(80)	50	(590)	30
Untrained Strength	2,180	780	50	800	540
Full Time Reservists (FTRS) "Non-Regular"	250	30	~	160	60
Total Regular Trained & Untrained Strength	36,500	6,440	850	22,110	7,100

	Total Trained and Untrained Strength	Trained Strength	FTRS "Regular"	Historic Liability ^{1,2}	Surplus/Deficit ³	Untrained Strength	FTRS "Non-Regular"
01-Apr-11	37,660	35,250	180	35,700	(270)	2,410	250
01-Apr-10	38,730	35,170	330	35,790	(290)	3,560	250
01-Apr-09	38,340	34,400	620	35,760	(740)	3,940	-
01-Apr-08	38,570	34,520	540	36,260	(1,200)	4,040	-

¹The term "Liability" replaces the term "Requirement"

²The latest liability is 2a_10 scaled to DP11, provided by DNPS

³Surplus/Deficit = Trained Strength + FTRS "Regular" - Liability.

5. Trained Regular Strength by Branch at 1 January 2012

RN Officers		RN Ratings ¹		RM Officers	
Warfare	2,780	Warfare XR	5,310	GD	790
Engineer	1,760	Warfare SM	850	Band	10
Logistics	590	Logistics	3,020	Career	-
Medical	340	Medical	750	Total	800
Dental	60	Engineering GS	4,750		
Chaplain	60	Engineering SM	2,170		
No Specialisation	-	Warfare Aviation	770		
Family	-	Air Engineering Careers	3,520		
Total	5,580	Not Specified	-	GD	6,220
		Total	21,130	Band	340
				Careers	-
				Total	6,560

RM Other Ranks	
GD	6,220
Band	340
Careers	-
Total	6,560

QARNNS Officers	
QARNNS Officers	70
QARNNS Ratings	180

Royal Navy Total	
Total Officers	6,460
Total Ratings	27,860
Total	34,320

¹Artificers have been allocated to their appropriate Branches

CONTACTS

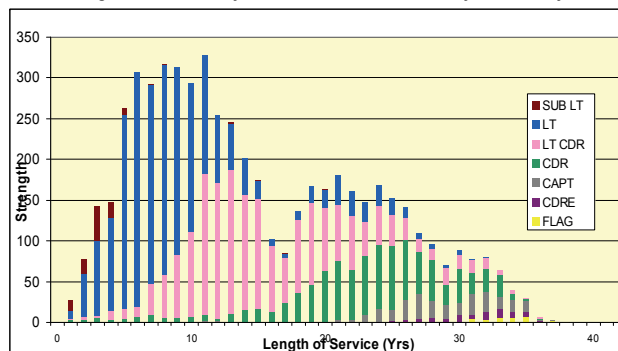
Produced by:

DASA (Navy)
Walcheren Building (33)
Whale Island
Portsmouth
Hampshire
PO2 8ER

DASA welcome feedback on our statistical products. If you have any comments or questions about this publication or about DASA statistics in general, you can contact us as follows:

Navy Peter Shute 023 92 547426
Email DASA-enquiries-mailbox@mod.uk
Visit our website at www.dasa.mod.uk

3. Trained Regular RN Officers by Paid Rank and LOS Since Entry at 1 January 2012



6. Total RN Regular Strength by Gender at 1 January 2012

Officers	Trained			Untrained		
	Male	Female	Total	Male	Female	Total
FLAG OFF	40	-	40	-	-	-
CDRE	70	-	70	-	-	-
CAPT	250	~	260	-	-	-
CDR	950	40	990	-	-	-
LT CDR	1,710	200	1,910	-	-	-
LT	1,930	360	2,290	200	30	230
SUB LT	90	20	110	410	60	470
MD	-	-	-	70	10	80
Total	5,050	610	5,660	690	100	780

Ratings						
	Male	Female	Total	Male	Female	Total
WO	580	30	610	-	-	-
WO2	520	~	520	-	-	-
CPO	3,060	190	3,250	-	-	-
PO	3,460	330	3,780	-	-	-
LDG	4,140	690	4,840	-	-	-
AB	7,040	1,250	8,290	720	90	800
Total	18,810	2,490	21,310	720	90	800

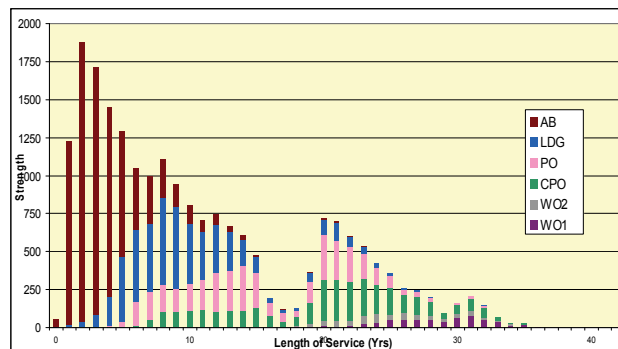
* Please note that ~ appears where there are 5 individuals or less due to the Data Protection Act 1998

1. Trained Manpower Accounts at 1 January 2012

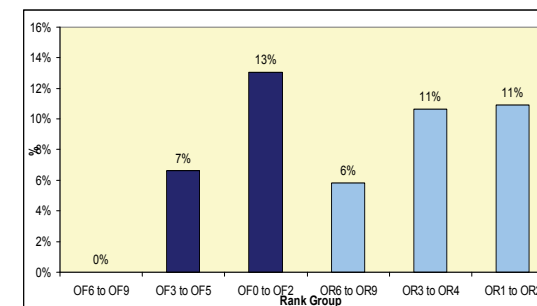
	Trained strength at 1 April 2011	GTS 2011/12	Entrants direct to trained strength 2011/12	Trained to untrained strength 2011/12	Trained wastage 2011/12	(Strength April point + inflow) - outflow	Trained strength at 1 January 2012
Officers	6,550	260	~	10	340	6,460	6,460
Ratings	28,700	1,170	40	~	2,040	27,860	27,860

GTS refers to Gains to Trained Strength and so does not include sideways entrants or trained FTRS intake. Trained FTRS intake are shown as entrants direct to the trained strength.

4. Trained Regular RN Ratings by Paid Rank and LOS Since Entry at 1 January 2012



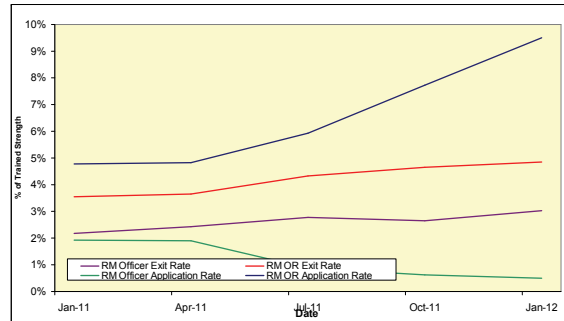
7. UK Regular Naval Service Females as a percentage of each paid rank group at 1 January 2012



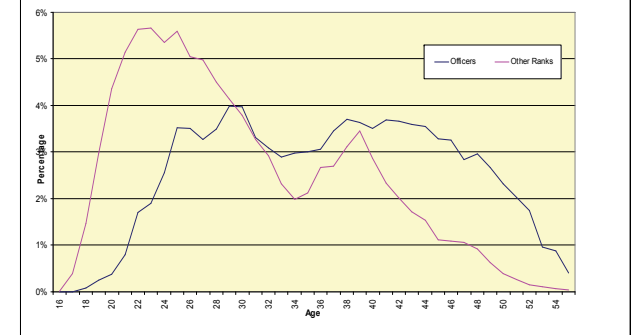
8. RN/RM Top Level Budget Trained Strength at 1 January 2012

Top Level Budget	
Navy Command	27,560
Navy Command Unallocated	27,550
Land Command	1,130
Air Command	620
Central	5,020
Centre	2,390
CJO	650
DE&S	1,980
Total	34,320

11. RM Voluntary Outflows and Application Rates as % of Trained Strength, 12 Months Ending 31 December 2011



14. Age Distribution - UK Regulars Naval Service 1 April 2011



9. Strength of FTRS and Activated Reservists at 1 January 2012

	Male	Female	Total
Officers			
Royal Navy	80	20	100
FTRS "Regular"	40	~	50
FTRS "Non-Regular"	20	10	30
Activated Reservists	20	10	30
Royal Marines	10	-	10
FTRS "Regular"	~	-	~
FTRS "Non-Regular"	~	-	~
Activated Reservists	~	-	~
Ratings			
Royal Navy	220	20	240
FTRS "Regular"	60	-	60
FTRS "Non-Regular"	140	20	160
Activated Reservists	10	10	20
Royal Marines	70	-	70
FTRS "Regular"	-	-	-
FTRS "Non-Regular"	60	-	60
Activated Reservists	10	-	10

12. Trained VO Applications and Exits 2011/12 to date

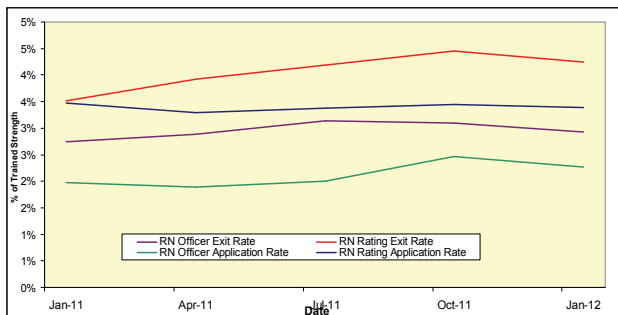
	Royal Navy		Royal Marine	
	Officers	Ratings	Officers	Ratings
VO Apps				
Applications	110	560	~	530
Withdrawals	-	20	-	20
Outflows				
Voluntary Outflows	130	670	20	250
Time Expiry	130	360	20	70
Other	30	560	~	140
Total Exits	300	1,590	40	450

15. Intake for 2011/12 to date

	Intake
Total Officers	270
RN	220
From Ranks SUVUY	40
New Entrant/Re-entrant/From Another Service/From Long Term Absentee	190
RM	50
From Ranks SUVUY	~
New Entrant/Re-entrant/From Another Service/From Long Term Absentee	40
Total Ratings	1,380
RN	940
New Entrant/Re-entrant/From Another Service/From Long Term Absentee	940
Re-entrant (From Officer)	20
RM	450
New Entrant/Re-entrant/From Another Service/From Long Term Absentee	450
Re-entrant (From Officer)	-

This table includes entrants to both the untrained and trained strengths

10. RN Voluntary Outflows and Application Rates as % of Trained Strength, 12 Months Ending 31 December 2011



13. Average Age of Substantive Promotions during the 12 months ending 31 December 2011

Royal Navy	Average Age on Promotion	Royal Marines	Average Age on Promotion
LDG	27	CPL	29
PO	32	SGT	34
CPO	34	CSGT	39
WO2	41	WO2	41
WO1	44	WO1	43
LT	28	CAPTAIN RM	27
LT CDR	36	MAJOR	35
CDR	42	LT COLONEL	40
CAPTAIN	47	COLONEL	44
CDRE	49	BRIG	49
REAR ADMIRAL	50	MAJ-GENERAL	~

Please note that ~ appears where there are 5 individuals or less in accordance with Data Protection Act 1998

16. Tri-Service Strength¹ by Ethnic Origin² at 1 January 2012

	Royal Navy	Army	RAF
Total	36,500^P	104,690^P	40,890^P
Ethnic Minorities	1,260 ^P	10,230 ^P	790 ^P
Percentage Ethnic Minority	3.5% ^P	9.8% ^P	1.9% ^P
White	34,690 ^P	94,070 ^P	38,120 ^P
Unknown	540 ^P	390 ^P	1,990 ^P

1. UK Regular Forces comprises trained and untrained personnel and excludes Gurkhas, Full Time Reserve Service personnel and mobilised reservists.

2. Ethnic minority percentage figures are based on those with a known ethnic origin. Percentages are calculated from unrounded data.

^P Denotes provisional. Data are provisional due to ongoing validation of data from the Joint Personnel Administration System

Source: UK Armed Forces Quarterly Manning Report.