

Naval Service Quarterly Pocket Brief October 2011

Produced by DASA (Navy)
Building 33
Whale Island
Portsmouth
PO2 8ER



Telephone: 02392 547426
Internal: 93832 7426
Fax: 02392 547431
E-mail: navy@dasa.mod.uk

N.B. Sum of parts may not equal totals due to rounding

Due to the introduction of JPA to the Royal Naval Service during October 2006, all data are provisional and subject to revision.



2. Strength Against Liability at 1 October 2011

	Total Strength	Officers		Ratings	
		RN	RM	RN	RM
Regular Trained Strength	34,560	5,660	780	21,520	6,600
Full Time Reservists (FTRS) "Regular"	120	40	-	70	-
Liability ^{1,2}	35,250	5,810	760	22,160	6,520
Surplus/Deficit ³	(570)	(100)	30	(570)	70
Untrained Strength	2,200	880	90	720	500
Full Time Reservists (FTRS) "Non-Regular"	250	30	-	160	60
Total Regular Trained & Untrained Strength	36,760	6,550	870	22,240	7,100

	Total Trained and Untrained Strength	Trained Strength	FTRS "Regular"	Historic Liability ^{1,2}	Surplus/Deficit ³	Untrained Strength	FTRS "Non-Regular"
01-Apr-11	37,660	35,250	180	35,700	(270)	2,410	250
01-Apr-10	38,730	35,170	330	35,790	(290)	3,560	250
01-Apr-09	38,340	34,400	620	35,760	(740)	3,940	-
01-Apr-08	38,570	34,520	540	36,260	(1,200)	4,040	-

¹The term "Liability" replaces the term "Requirement"

²The latest liability is 2a_10 scaled to DP11, provided by DNPS

³Surplus/Deficit = Trained Strength + FTRS "Regular" - Liability.

5. Trained Regular Strength by Branch at 1 October 2011

RN Officers		RN Ratings ¹		RM Officers	
Warfare	2,760	Warfare XR	5,360	GD	770
Engineer	1,780	Warfare SM	860	Band	10
Logistics	580	Logistics	3,080	Career	-
Medical	350	Medical	740	Total	780
Dental	60	Engineering GS	4,840		
Chaplain	60	Engineering SM	2,160		
No Specialisation	-	Warfare Aviation	750		
Family	-	Air Engineering Careers	3,550		
Total	5,990	Not Specified	-		
		Total	21,340	Total	6,600

RM Other Ranks	
GD	6,250
Band	340
Careers	-
Total	6,600

Royal Navy Total	
Total Officers	6,450
Total Ratings	28,120
Total	34,560

QARNNS Officers	80
QARNNS Ratings	180

¹Artificers have been allocated to their appropriate Branches

CONTACTS

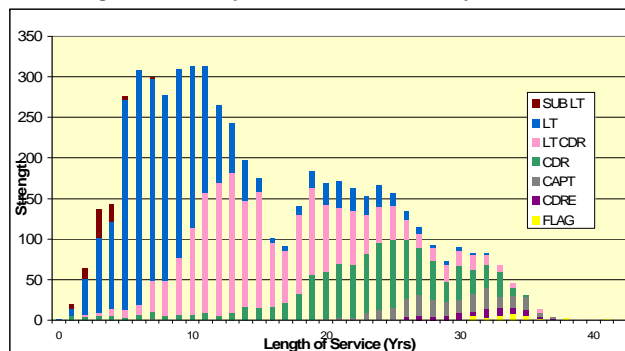
Produced by:

DASA (Navy)
Walcheren Building (33)
Whale Island
Portsmouth
Hampshire
PO2 8ER

DASA welcome feedback on our statistical products. If you have any comments or questions about this publication or about DASA statistics in general, you can contact us as follows:

Navy Peter Shute 023 92 547426
Email DASA-enquiries-mailbox@mod.uk
Visit our website at www.dasa.mod.uk

3. Trained Regular RN Officers by Paid Rank and LOS Since Entry at 1 October 2011



6. Total RN Regular Strength by Gender at 1 October 2011

Officers	Trained			Untrained		
	Male	Female	Total	Male	Female	Total
FLAG OFF	40	-	40	-	-	-
CDRE	70	-	70	-	-	-
CAPT	250	-	250	-	-	-
CDR	970	40	1,010	-	-	-
LT CDR	1,700	200	1,900	-	-	-
LT	1,960	360	2,320	240	40	280
SUB LT	70	10	80	450	70	510
MD	-	-	-	80	10	90
Total	5,060	610	5,660	770	120	880

Ratings						
	Male	Female	Total	Male	Female	Total
WO	590	30	620	-	-	-
WC2	520	-	530	-	-	-
CPO	3,070	180	3,250	-	-	-
PO	3,490	340	3,820	-	-	-
LDG	4,160	710	4,870	-	-	-
AB	7,140	1,270	8,410	660	70	720
Total	18,990	2,530	21,520	660	70	720

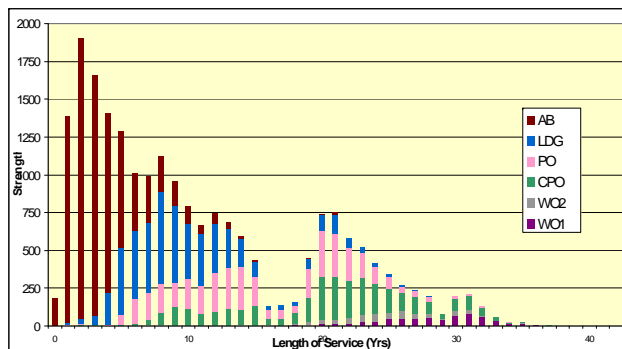
* Please note that ~ appears where there are 5 individuals or less due to the Data Protection Act 1998

1. Trained Manpower Accounts at 1 October 2011

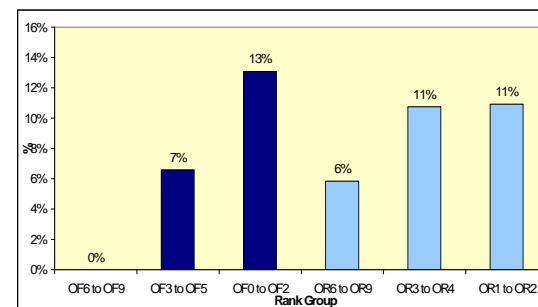
	Trained strength at 1 April 2011	GTS 2011/12	Entrants direct to trained strength 2011/12	Trained to untrained strength 2011/12	Trained wastage 2011/12	(Strength April point + inflow) - outflow	Trained strength at 1 October 2011
Officers	6,550	120	-	10	220	6,450	6,450
Ratings	28,700	880	20	-	1,490	28,120	28,120

GTS refers to Gains to Trained Strength and so does not include sideways entrants or trained FTRS intake. Trained FTRS intake are shown as entrants direct to the trained strength.

4. Trained Regular RN Ratings by Paid Rank and LOS Since Entry at 1 October 2011



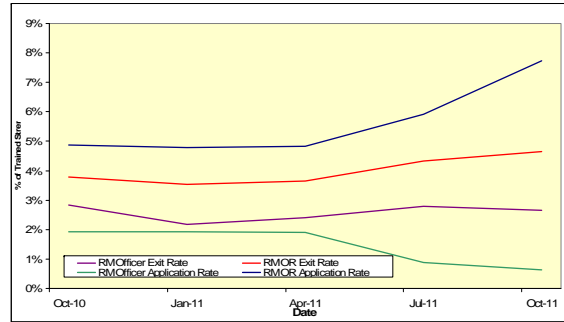
7. UK Regular Naval Service Females as a percentage of each paid rank group at 1 October 2011



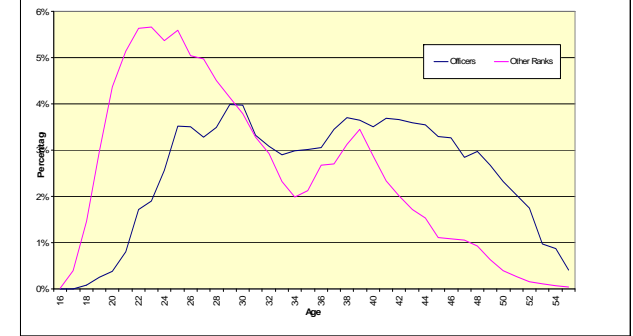
8. RNRM Top Level Budget Trained Strength at 1 October 2011

Top Level Budget	
Navy Command	27,640
Navy Command Unallocated	27,640
Land Command	1,110
Air Command	670
Central	5,140
Centre	2,290
CJO	880
DE&S	1,970
Total	34,560

11. RM Voluntary Outflows and Application Rates as % of Trained Strength, 12 Months Ending 30 September 2011



14. Age Distribution - UK Regulars Naval Service 1 April 2011



9. Strength of FTRS and Activated Reservists at 1 October 2011

	Male	Female	Total
Officers			
Royal Navy	100	10	110
FTRS "Regular"	40	~	40
FTRS "Non-Regular"	20	10	30
Activated Reservists	30	~	40
Royal Marines	20	~	20
FTRS "Regular"	~	~	~
FTRS "Non-Regular"	~	~	~
Activated Reservists	10	~	10
Ratings			
Royal Navy	230	20	260
FTRS "Regular"	70	~	70
FTRS "Non-Regular"	140	20	160
Activated Reservists	20	10	30
Royal Marines	110	~	110
FTRS "Regular"	~	~	~
FTRS "Non-Regular"	60	~	60
Activated Reservists	50	~	50

12. Trained VO Applications and Exits 2011/12 to date

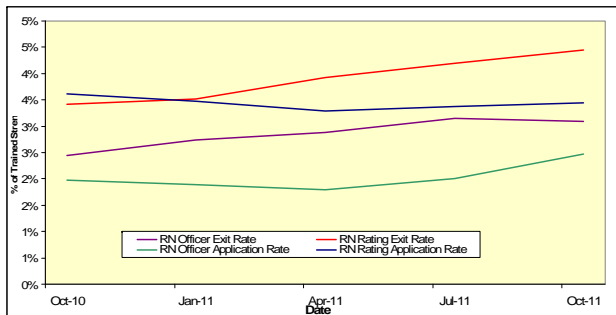
		Royal Navy		Royal Marine	
		Officers	Ratings	Officers	Ratings
VO Apps	Applications	90	400	~	340
	Withdrawals	-	10	-	~
	Voluntary Outflows	80	520	10	180
Outflows	Time Expiry	90	260	10	50
	Other	20	390	~	80
	Total Exits	190	1,170	30	310

15. Intake for 2011/12 to date

	Intake
Total Officers	260
RN	210
From Ranks SU/UY	20
New Entrant/Re-entrant/From Another Service/From Long Term Absentee	190
RM	50
From Ranks SU/UY	~
New Entrant/Re-entrant/From Another Service/From Long Term Absentee	40
Total Ratings	830
RN	600
New Entrant/Re-entrant/From Another Service/From Long Term Absentee	600
Re-entrant (From Officer)	30
RM	220
New Entrant/Re-entrant/From Another Service/From Long Term Absentee	220
Re-entrant (From Officer)	~

This table includes entrants to both the untrained and trained strengths

10. RN Voluntary Outflows and Application Rates as % of Trained Strength, 12 Months Ending 30 September 2011



13. Average Age of Substantive Promotions during the 12 months ending 30 September 2011

Royal Navy	Average Age on Promotion	Royal Marines	Average Age on Promotion
LDG	27	CPL	29
PO	32	SGT	34
CPO	35	CSGT	39
WC2	41	WC2	41
WO1	44	WO1	43
LT	28	CAPTAIN RM	27
LT CDR	36	MAJOR	36
CDR	42	LT COLONEL	40
CAPTAIN	47	COLONEL	44
CDRE	49	BRIG	49
REAR ADMIRAL	50	MAJ-GENERAL	~

Please note that ~ appears where there are 5 individuals or less in accordance with Data Protection Act 1998

16. Tri-Service Strength¹ by Ethnic Origin² at 1 October 2011

	Royal Navy	Army	RAF
Total	36,760^P	105,680^P	41,580^P
Ethnic Minorities	1,260 ^P	10,240 ^P	810 ^P
Percentage Ethnic Minority	3.4% ^P	9.7% ^P	1.9% ^P
White	34,910 ^P	94,950 ^P	38,730 ^P
Unknown	590 ^P	490 ^P	2,030 ^P

1. UK Regular Forces comprises trained and untrained personnel and excludes Gurkhas, Full Time Reserve Service personnel and mobilised reservists.
 2. Ethnic minority percentage figures are based on those with a known ethnic origin. Percentages are calculated from unrounded data.
^P Denotes provisional. Data are provisional due to ongoing validation of data from the Joint Personnel Administration System
 Source: UK Armed Forces Quarterly Manning Report.