

Naval Service Quarterly Pocket Brief July 2011

Produced by DASA (Navy)
Building 33
Whale Island
Portsmouth
PO2 8ER



Telephone: 02392 547426
Internal: 93832 7426
Fax: 02392 547431
E-mail: navy@dasa.mod.uk

N.B. Sum of parts may not equal totals due to rounding

Due to the introduction of JPA to the Royal Naval Service during October 2006, all data are provisional and subject to revision.



2. Strength Against Liability at 1 July 2011

	Total Strength	Officers		Ratings	
		RN	RM	RN	RM
Regular Trained Strength	34,970	5,730	800	21,890	6,560
Full Time Reservists (FTRS) "Regular"	150	60	10	80	~
Liability ^{1,2}	35,480	5,840	770	22,330	6,540
Surplus/Deficit ³	(360)	(60)	40	(360)	30
Untrained Strength	2,200	820	50	690	630
Full Time Reservists (FTRS) "Non-Regular"	250	30	~	160	60
Total Regular Trained & Untrained Strength	37,170	6,550	840	22,580	7,190

	Total Trained and Untrained Strength	Trained Strength	FTRS "Regular"	Historic Liability ^{1,2}	Surplus/Deficit ³	Untrained Strength	FTRS "Non-Regular"
01-Apr-11	37,660	35,250	180	35,700	(270)	2,410	250
01-Apr-10	38,730	35,170	330	35,790	(290)	3,560	250
01-Apr-09	38,340	34,390	620	35,760	(750)	3,940	-
01-Apr-08	38,570	34,530	540	36,260	(1,190)	4,040	-

¹The term "Liability" replaces the term "Requirement"

²The latest liability is 2a_10 scaled to DP11, provided by DNPS

³Surplus/Deficit = Trained Strength + FTRS "Regular" - Liability.

5. Trained Regular Strength by Branch at 1 July 2011

RN Officers		RN Ratings ¹		RM Officers	
Warfare	2,780	Warfare XR	5,470	GD	780
Engineer	1,800	Warfare SM	860	Band	10
Logistics	590	Logistics	3,130	Career	~
Medical	360	Medical	750	Total	800
Dental	60	Engineering GS	5,010		
Chaplain	60	Engineering SM	2,160		
No Specialisation	-	Warfare Aviation	770		
Family	-	Air Engineering	3,550		
Total	5,650	Careers	-		
		Not Specified	-		
		Total	21,710		

RM Other Ranks	
GD	6,220
Band	330
Careers	-
Total	6,560

QARNNS Officers	80
QARNNS Ratings	180

Royal Navy Total	
Total Officers	6,520
Total Ratings	28,450
Total	34,970

¹Artificers have been allocated to their appropriate Branches

CONTACTS

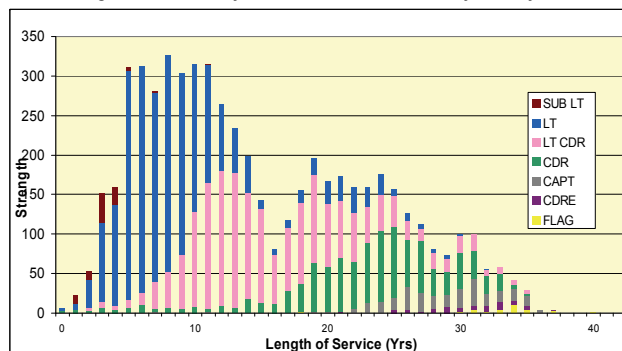
Produced by:

DASA (Navy)
Walcheren Building (33)
Whale Island
Portsmouth
Hampshire
PO2 8ER

DASA welcome feedback on our statistical products. If you have any comments or questions about this publication or about DASA statistics in general, you can contact us as follows:

Navy Peter Shute 023 92 547426
Email DASA-enquiries-mailbox@mod.uk
Visit our website at www.dasa.mod.uk

3. Trained Regular RN Officers by Paid Rank and LOS Since Entry at 1 July 2011



6. Total RN Regular Strength by Gender at 1 July 2011

Officers	Trained			Untrained		
	Male	Female	Total	Male	Female	Total
FLAG OFF	30	-	30	-	-	-
CDRE	70	-	70	-	-	-
CAPT	250	~	260	-	-	-
CDR	980	30	1,010	-	-	-
LT CDR	1,720	190	1,910	-	-	-
LT	1,980	370	2,360	200	20	220
SUB LT	70	10	90	430	70	500
MID	-	-	-	80	10	100
Total	5,110	610	5,730	710	110	820

Ratings						
	Male	Female	Total	Male	Female	Total
WO	610	30	630	-	-	-
WO2	540	~	540	-	-	-
CPO	3,140	180	3,320	-	-	-
PO	3,460	330	3,800	-	-	-
LDG	4,160	720	4,880	~	~	~
AB	7,390	1,330	8,720	630	60	690
Total	19,290	2,600	21,890	630	60	690

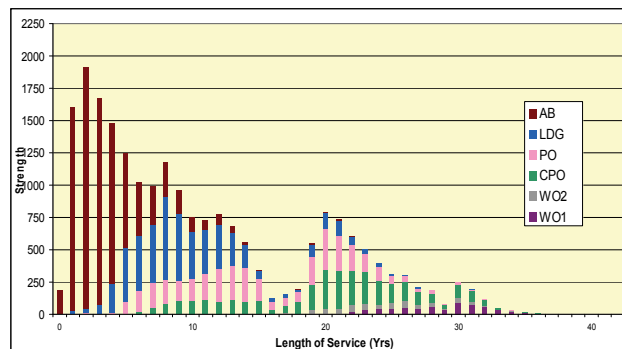
* Please note that ~ appears where there are 5 individuals or less due to the Data Protection Act 1998

1. Trained Manpower Accounts at 1 July 2011

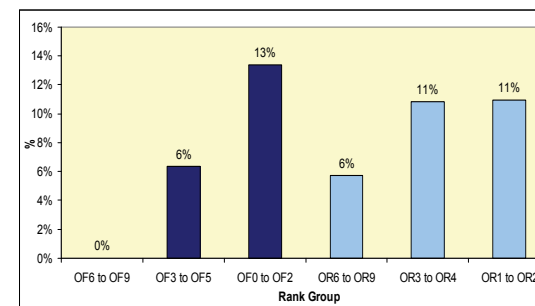
	Trained strength at 1 April 2011	GTS 2011/12	Entrants direct to trained strength 2011/12	Trained to untrained strength 2011/12	Trained wastage 2011/12	(Strength April point + inflow) - outflow	Trained strength at 1 July 2011
Officers	6,550	80	~	-	110	6,520	6,520
Ratings	28,700	500	10	-	760	28,450	28,450

GTS refers to Gains to Trained Strength and so does not include sideways entrants or trained FTRS intake. Trained FTRS intake are shown as entrants direct to the trained strength.

4. Trained Regular RN Ratings by Paid Rank and LOS Since Entry at 1 July 2011



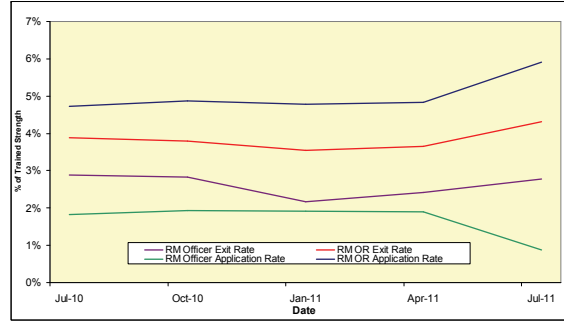
7. UK Regular Naval Service Females as a percentage of each paid rank group at 1 July 2011



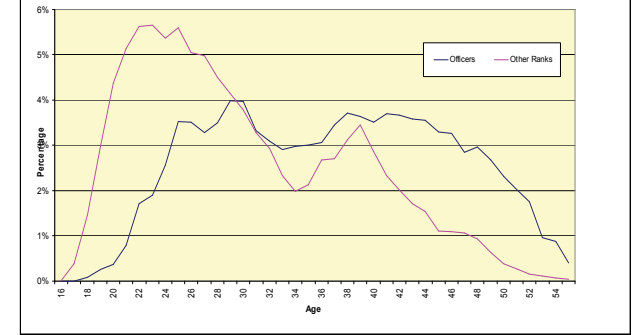
8. RN/RM Top Level Budget Trained Strength at 1 July 2011

Top Level Budget	
Navy Command	27,970
Navy Command Unallocated	27,970
Land Command	1,120
Air Command	690
Central	5,180
Centre	2,290
CJO	900
DE&S	2,000
Total	34,970

11. RM Voluntary Outflows and Application Rates as % of Trained Strength, 12 Months Ending 30 June 2011



14. Age Distribution - UK Regulars Naval Service 1 April 2011



9. Strength of FTRS and Activated Reservists at 1 July 2011

	Male	Female	Total
Officers			
Royal Navy	110	20	130
FTRS "Regular"	50	~	60
FTRS "Non-Regular"	20	10	30
Activated Reservists	40	10	50
Royal Marines	20	-	20
FTRS "Regular"	10	-	10
FTRS "Non-Regular"	~	-	~
Activated Reservists	10	-	10
Ratings			
Royal Navy	250	40	290
FTRS "Regular"	80	~	80
FTRS "Non-Regular"	140	20	160
Activated Reservists	30	10	50
Royal Marines	120	-	120
FTRS "Regular"	~	-	~
FTRS "Non-Regular"	60	-	60
Activated Reservists	50	-	50

12. Trained VO Applications and Exits 2011/12 to date

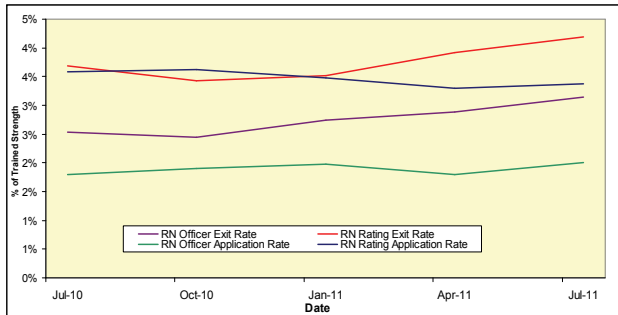
		Royal Navy		Royal Marine	
		Officers	Ratings	Officers	Ratings
VO Apps	Applications	40	220	-	150
	Withdrawals	-	10	-	-
VO Exits	Voluntary Outflows	40	270	~	90
	Time Expiry	40	140	10	30
	Other	10	190	~	30
	Total Exits	90	610	10	160

15. Intake for 2011/12 to date

	Intake
Total Officers	100
RN	100
From Ranks SUVUY	10
New Entrant/Re-entrant/From Another Service/From Long Term Absentee	90
RM	-
From Ranks SUVUY	-
New Entrant/Re-entrant/From Another Service/From Long Term Absentee	-
Total Ratings	410
RN	320
New Entrant/Re-entrant/From Another Service/From Long Term Absentee	320
Re-entrant (From Officer)	50
RM	90
New Entrant/Re-entrant/From Another Service/From Long Term Absentee	90
Re-entrant (From Officer)	-

This table includes entrants to both the untrained and trained strengths

10. RN Voluntary Outflows and Application Rates as % of Trained Strength, 12 Months Ending 30 June 2011



13. Average Age of Substantive Promotions during the 12 months ending 30 June 2011

	Average Age on Promotion		Average Age on Promotion
Royal Navy		Royal Marines	
LDG	27	CPL	29
PO	32	SGT	34
CPO	35	CSGT	39
WO2	42	WO2	41
WO1	44	WO1	43
LT	29	CAPTAIN RM	29
LT CDR	36	MAJOR	36
CDR	42	LT COLONEL	40
CAPTAIN	46	COLONEL	44
CDRE	49	BRIG	~
REAR ADMIRAL	~	MAJ-GENERAL	~

Please note that ~ appears where there are 5 individuals or less in accordance with Data Protection Act 1998

16. Tri-Service Strength¹ by Ethnic Origin² at 1 July 2011

	Royal Navy	Army	RAF
Total	37,170^P	105,750^P	42,010^P
Ethnic Minorities	1,290 ^P	10,190 ^P	820 ^P
Percentage Ethnic Minority	3.5% ^P	9.7% ^P	1.9% ^P
White	35,280 ^P	94,950 ^P	39,110 ^P
Unknown	600 ^P	610 ^P	2,080 ^P

1. UK Regular Forces comprises trained and untrained personnel and excludes Gurhas, Full Time Reserve Service personnel and mobilised reservists.
 2. Ethnic minority percentage figures are based on those with a known ethnic origin. Percentages are calculated from unrounded data.
^P Denotes provisional. Data are provisional due to ongoing validation of data from the Joint Personnel Administration System
 Source: UK Armed Forces Quarterly Manning Report.