

Naval Service Quarterly Pocket Brief January 2011

Produced by DASA (Navy)
Building 33
Whale Island
Portsmouth
PO2 8ER



Telephone: 02392 547426
Internal: 93832 7426
Fax: 02392 547431
E-mail: navy@dasa.mod.uk

N.B. Sum of parts may not equal totals due to rounding

Due to the introduction of JPA to the Royal Naval Service during October 2006, all data are provisional and subject to revision.



2. Strength Against Liability at 1 January 2011

	Total Strength	Officers		Ratings	
		RN	RM	RN	RM
Regular Trained Strength	35,250	5,690	810	22,240	6,510
Full Time Reservists (FTRS) "Regular"	210	80	~	120	~
Liability ^{1,2}	35,720	5,860	770	22,540	6,550
Surplus/Deficit ³	(270)	(90)	40	(180)	(40)
Untrained Strength	3,090	890	60	1,290	840
Full Time Reservists (FTRS) "Non-Regular"	260	30	10	160	60
Total Regular Trained & Untrained Strength	38,340	6,590	870	23,530	7,360

	Total Trained and Untrained Strength	Trained Strength	FTRS "Regular" ¹	Historic Liability ^{1,2}	Surplus/Deficit ³	Untrained Strength	FTRS "Non-Regular"
01-Apr-10	38,730	35,170	330	35,790	(290)	3,560	250
01-Apr-09	38,340	34,390	620	35,760	(750)	3,940	-
01-Apr-08	38,570	34,530	540	36,260	(1,190)	4,040	-
01-Apr-07	38,860	34,340	580	36,800	(1,880)	4,520	-

¹The term "Liability" replaces the term "Requirement"

²The latest liability is 1_10, provided by DNPS

³Surplus/Deficit = Trained Strength + FTRS "Regular" - Liability.

5. Trained Regular Strength by Branch at 1 January 2011

RN Officers		RN Ratings ¹		RM Officers	
Warfare	2,780	Warfare XR	5,610	GD	790
Engineer	1,800	Warfare SM	870	Band	10
Logistics	580	Logistics	3,200	Career	~
Medical	340	Medical	770	Total	810
Dental	60	Engineering GS	5,180		
Chaplain	70	Engineering SM	2,140		
No Specialisation	-	Warfare Aviation	770		
Family	-	Air Engineering	3,510		
Total	5,620	Careers	-		
		Not Specified	-		
		Total	22,050		

RM Other Ranks	
GD	6,180
Band	340
Careers	-
Total	6,510

QARNNS Officers	
	80

QARNNS Ratings	
	180

Royal Navy Total	
Total Officers	6,500
Total Ratings	28,750
Total	35,250

¹ Artificers have been allocated to their appropriate Branches

CONTACTS

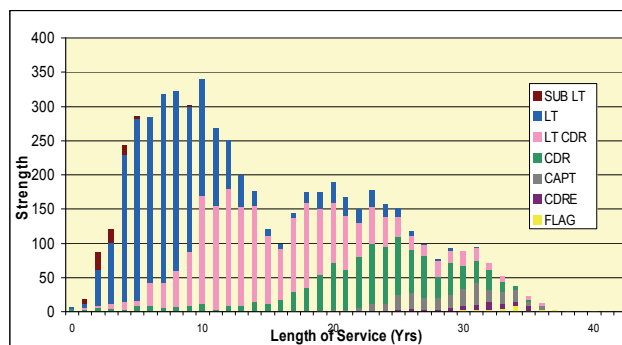
Produced by:

DASA (Navy)
Walcheren Building (33)
Whale Island
Portsmouth
Hampshire
PO2 8ER

DASA welcome feedback on our statistical products. If you have any comments or questions about this publication or about DASA statistics in general, you can contact us as follows:

Navy Peter Shute 023 92 547426
Email DASA-enquiries-mailbox@mod.uk
Visit our website at www.dasa.mod.uk

3. Trained Regular RN Officers by Paid Rank and LOS Since Entry at 1 January 2011



6. Total RN Regular Strength by Gender at 1 January 2011

Officers	Trained			Untrained		
	Male	Female	Total	Male	Female	Total
FLAG OFF	30	-	30	-	-	-
CDRE	70	-	70	-	-	-
CAPT	250	~	260	-	-	-
CDR	990	30	1,020	-	-	-
LT CDR	1,800	200	1,990	-	-	-
LT	1,900	350	2,250	260	40	300
SUB LT	60	10	70	410	70	480
MID	-	-	-	100	10	100
Total	5,100	600	5,690	770	120	890

Ratings						
WO	620	30	650	-	-	-
WO2	560	~	560	-	-	-
CPO	3,220	180	3,390	-	-	-
PO	3,620	350	3,970	-	-	-
LDG	4,160	720	4,880	-	-	-
AB	7,390	1,400	8,780	1,160	140	1,290
Total	19,560	2,670	22,240	1,160	140	1,290

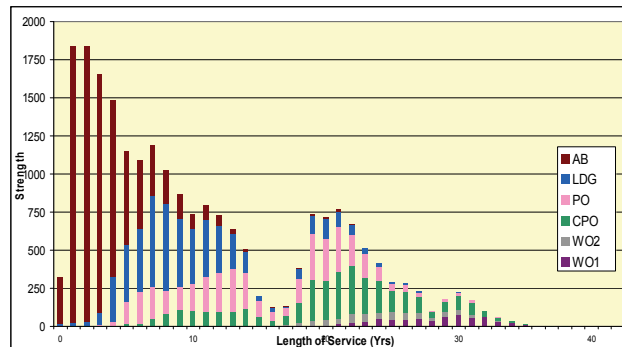
* Please note that ~ appears where there are 5 individuals or less due to the Data Protection Act 1998

1. Trained Manpower Accounts at 1 January 2011

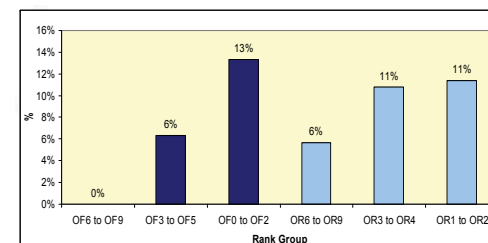
	Trained strength at 1 April 2010	GTS 2010/11	Entrants direct to trained strength 2010/11	Trained to untrained strength 2010/11	Trained wastage 2010/11	(Strength April point + inflow) - outflow	Trained strength at 1 January 2011
Officers	6,520	280	10	10	290	6,500	6,500
Ratings	28,650	1,780	60	20	1,720	28,750	28,750

GTS refers to Gains to Trained Strength and so does not include sideways entrants or trained FTRS intake. Trained FTRS intake are shown as entrants direct to the trained strength.

4. Trained Regular RN Ratings by Paid Rank and LOS Since Entry at 1 January 2011



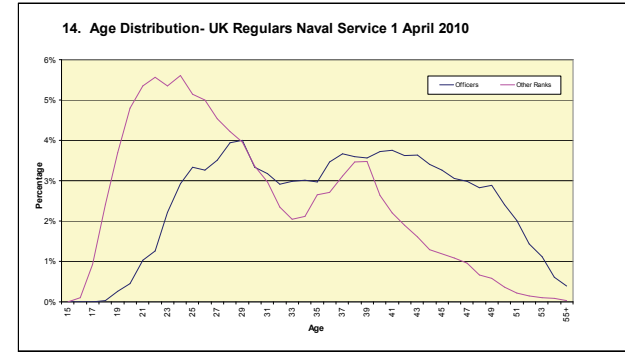
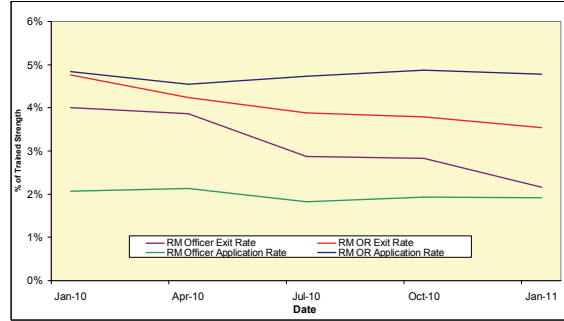
7. UK Regular Naval Service Females as a percentage of each paid rank group at 1 Jan 2011



8. RN/RM Top Level Budget Trained Strength at 1 January 2011

Top Level Budget	
Navy Command	27,980
Navy Command Unallocated	27,980
Land Command	1,120
Air Command	980
Central	5,160
Centre	2,340
CJO	780
DE&S	2,040
Total	35,250

11. RM Voluntary Outflows and Application Rates as % of Trained Strength, 12 Months Ending 30 December 2010



9. Strength of FTRS and Activated Reservists at 1 January 2011

	Male	Female	Total
Officers			
Royal Navy	130	20	150
FTRS "Regular"	70	10	80
FTRS "Non-Regular"	20	10	30
Activated Reservists	30	10	40
Royal Marines	20	-	20
FTRS "Regular"	~	-	~
FTRS "Non-Regular"	10	-	10
Activated Reservists	10	-	10
Ratings			
Royal Navy	310	40	350
FTRS "Regular"	110	10	120
FTRS "Non-Regular"	140	20	160
Activated Reservists	60	20	80
Royal Marines	150	-	150
FTRS "Regular"	~	-	~
FTRS "Non-Regular"	60	-	60
Activated Reservists	80	-	80

12. Trained VO Applications and Exits 2010/11 to date

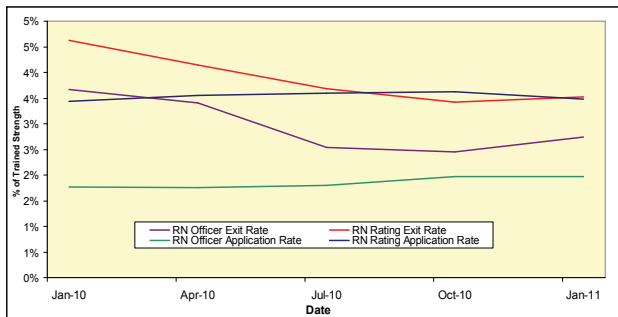
	Royal Navy		Royal Marine	
	Officers	Ratings	Officers	Ratings
VO Applications				
Applications	80	550	10	220
Withdrawals	~	20	-	20
Outflows				
Voluntary Outflows	130	620	10	170
Time Expiry	100	350	20	70
Other	20	430	~	80
Total Exits	260	1,400	40	330

15. Intake for 2010/11 to date

	Intake
Total Officers	340
RN	290
From Ranks SUVUY	60
New Entrant/Re-entrant/From Another Service/From Long Term Absentee	220
RM	60
From Ranks SUVUY	~
New Entrant/Re-entrant/From Another Service/From Long Term Absentee	50
Total Ratings	2,020
RN	1,100
New Entrant/Re-entrant/From Another Service/From Long Term Absentee	1,100
Re-entrant (From Officer)	-
RM	920
New Entrant/Re-entrant/From Another Service/From Long Term Absentee	920
Re-entrant (From Officer)	-

This table includes entrants to both the untrained and trained strengths

10. RN Voluntary Outflows and Application Rates as % of Trained Strength, 12 Months Ending 30 December 2010



13. Average Age of Substantive Promotions during the 12 months ending 30 December 2010

Royal Navy	Average Age on Promotion	Royal Marines	Average Age on Promotion
LDG	27	CPL	28
PO	31	SGT	34
CPO	36	CSGT	38
WO2	40	WO2	41
WO1	44	WO1	42
LT	28	CAPTAIN RM	30
LT CDR	36	MAJOR	36
CDR	42	LT COLONEL	41
CAPTAIN	46	COLONEL	~
CDRE	48	BRIG	~
REAR ADMIRAL	50	MAJ-GENERAL	~

Please note that ~ appears where there are 5 individuals or less in accordance with Data Protection Act 1998

16. Tri-Service Strength¹ by Ethnic Origin² at 1 January 2011

	Royal Navy	Army	RAF
Total	38,340^P	106,050^P	42,860^P
Ethnic Minorities	1,300 ^P	10,030 ^P	850 ^P
Percentage Ethnic Minority	3.5% ^P	9.5% ^P	2.0% ^P
White	35,750 ^P	95,260 ^P	39,910 ^P
Unknown	1,290 ^P	760 ^P	2,100 ^P

1. UK Regular Forces comprises trained and untrained personnel and excludes Gurkhas, Full Time Reserve Service personnel and mobilised reservists.
 2. Ethnic minority percentage figures are based on those with a known ethnic origin. Percentages are calculated from unrounded data.
^P Denotes provisional. Data are provisional due to ongoing validation of data from the Joint Personnel Administration System
 Source: UK Armed Forces Quarterly Manning Report.