



Ministry of Defence

TSP7 - UK Reserve Forces and MOD Sponsored Cadet Forces



1 April 2012

Statistical release

Revised: 28 November 2012
Original Publication Date: 17 May 2012

Contents Summary	Page
Commentary	1
UK Reserve Forces	
Table 1 UK Reserve Forces Strengths	3
Table 2 Naval Service Reserve Forces Strengths	4
Table 3 Army Reserve Forces Strengths	5
Table 4 Royal Air Force Reserve Forces Strengths	6
Table 5 Relative Strength of Reserve Forces by Type	7
MOD Sponsored Cadet Forces	
Table 6a Community Cadet Forces Strengths	9
Table 6b Combined Cadet Forces Strengths	9
Table 7 Community Cadet Forces Cadets strengths by Service, age and sex	10
Table 8 Combined Cadet Force Cadets Strengths by Service, age and sex	12
Cadet Force Adult Volunteer	
Table 9a Community Cadet Forces Adult Volunteers Strengths	14
Table 9b Combined Cadet Force Adult Volunteers Strengths	14

The UK Reserve Forces and MOD Sponsored Cadet Forces publication contains figures on strength of the UK Reserve Forces and Sponsored Cadet Forces.

The UK Reserve Forces tables provide information about the patterns of change in the composition of the UK's Reserve Forces for the three most recent years, and historic 5-year, 10-year, and 20-year figures provide context. The MOD Sponsored Cadet tables present information on the strength of the Combined Cadet Force and the Community Cadet Forces by age and sex, including adult instructors. Time series tables provide information for the three most recent years, plus historic 5-year and 10-year figures.

UK Reserve Forces Key Points

- The strength of the UK Volunteer Reserve forces (excluding University Units), was 29,960 at 1 April 2012, a decrease of 1,220 on 1 April 2011.
- The strength of the Naval Service Volunteer Reserve, comprising the Royal Naval Reserve and the Royal Marine Reserve and including University Units, was 2,570 at 1 April 2012, an increase of 30 on 1 April 2011.
- The strength of the Army Volunteer Reserve, including University Units was 31,160 at 1 April 2012, a decrease of 240 on 1 April 2011.
- The strength of the Royal Air Force Volunteer Reserve, including University Units was 2,450 at 1 April 2012, a decrease of 10 on 1 April 2011.

MOD Sponsored Cadet Forces Key Points

- The Community Cadet Forces strength was 94,730 and the Combined Cadet Force strength was 45,020 (exc Cadet Forces Adult Volunteers). The Army Cadet Force had the largest proportion of cadets, followed by the Air Training Corps and then the Sea Cadet Corps.
- The Community Cadet Forces instructor strength was 24,080, a decrease of 430 since April 2011. The Combined Cadet Force Instructor strength decreased by 3.3 per cent to 2,100.

Further Information: DASA Tri Service Tel: 020-721-78896 Email: dasa-quad-enquiries@mod.uk

General Public Enquiries: www.dasa.mod.uk

Contents

Page:

	Introduction, Key Points, Sources and Data Quality Notes	1
Reserve Forces Strengths		
Table 1	UK Reserve Forces at 1 April 2012	3
Table 2	Naval Service Reserve Forces at 1 April in each year	4
Table 3	Army Reserve Forces at 1 April in each year	5
Table 4	Royal Air Force Reserve Forces at 1 April in each year	6
Relative Strengths		
Table 5	Relative Strength of Reserve Forces by Type	7
Historical Strengths		
Chart 1	Strength of Volunteer Reserves by Service 1992 – 2012	8
Cadet Forces Strengths		
Table 6a	Community Cadet Forces strengths at 1 April each year	9
Table 6b	Combined Cadet Force strengths at 1 April each year	9
Table 7	Community Cadet Forces Cadets strengths by Service, age and sex at 1 April 2012	10
Chart 2 - 4		11
Table 8	Combined Cadet Force Cadets strengths by Service, age and sex at 1 April 2012	12
Chart 5 - 8		13
Table 9a	Community Cadet Force Adult Volunteers (CFAV) strengths by Service and sex at 1 April 2012	14
Table 9b	Combined Cadet Force Adult Volunteers (CFAV) strengths by Service and sex at 1 April 2012	14

Due to ongoing validation of data from the Joint Personnel Administration system, Naval Service Reserves data for 2008 onwards are not sourced from DASA's JPA extracts. Army Reserves and RAF Reserves data for 2010 and 2011 are provisional and subject to review.

Symbols and conventions

p denotes provisional

r denotes revised

.. denotes not available

* denotes not applicable

- denotes zero or rounded to zero

Due to the rounding methods used, figures may not always equal the sum of the parts. When rounding to the nearest 10, numbers ending in 5 have been rounded to the nearest multiple of 20 to prevent systematic bias. Percentages are calculated based on unrounded figures, and where a percentage is based on fewer than 5 instances, it is suppressed and denoted by '-'.

Revision - Royal Air Force Regular Reserves

Data for Air Force Reserve Officers and Air Force Reserve Other Ranks has been revised. This revision affects data from 2006 to 2012 and has had a far greater effect on data for Other Ranks than it has for Officers. Since the introduction of the Joint Personnel Administration system, data for a number of RAF Regular Reserve Forces personnel had not been entered into the system until a recent correction exercise was carried out.

The following table shows the changes that have occurred to the data since the system has been updated.

		2002	2007	2010	2011	2012
Revised Figures	Air Force Reserve	12,700	7,950	7,200	6,900	6,660
	Officers	590	380	340	310	300
	Other Ranks	12,120	7,570	6,860	6,600	6,360
Previous Figures	Air Force Reserve	12,700	7,350	5,420	5,120	4,870
	Officers	590	370	310	280	270
	Other Ranks	12,120	6,980	5,110	4,840	4,600
Difference	Air Force Reserve	-	600	1,780	1,780	1,790
	Officers	-	10	30	30	30
	Other Ranks	-	590	1,750	1,760	1,760

Changes to TSP7 in 2012

In accordance with an agreement made between DASA and the UK Statistics Authority, Cadets strengths were not included in TSP 7 in 2010 and 2011. DASA produced standalone reports on Cadets strengths for these years, which are available on DASA's website. The management information systems and processes for obtaining Cadets data have now improved sufficiently to enable publication of the Cadets information alongside the Reserves information in TSP7.

Due to Departmental restructuring, the data source for Naval Service Reserves information was discontinued in 2012. Consequently DASA has not been able to obtain full information on the Royal Marine Reserve or University Royal Naval Units in time for the 2012 publication, and the relevant tables (1 and 2) are annotated accordingly. Work is continuing within the Department to improve the reporting of Reserves information, and as and when the missing information becomes available, DASA will re-issue this publication.

Introduction

This is an annual publication containing information on the strength of UK Reserve Forces, including Regular and Volunteer Reserves, and MOD Sponsored Cadet Forces, broken down by Service. It uses data from the Ministry of Defence Joint Personnel Administration System (JPA) and single Service systems.

The Reserves tables provide information about the patterns of change in the composition of the UK's Reserve Forces for the three most recent years. Historic 5-year, 10-year, and 20 year figures are also presented to provide context.

The Cadets tables provide information about the strength of the Combined Cadet Force and the Community Cadet Forces by age and sex. There are also time series tables which provide information on the patterns of change in the composition of the Cadet Forces in the three most recent years. Historic 5-year and 10-year figures are presented for comparison.

The Sponsored Cadet Forces comprise the Combined Cadet Force and the Community Cadet Forces (Sea Cadet Corps, Army Cadet Force and Air Training Corps). The Cadet Forces are not part of the Armed Forces although some Cadet Force Officers are members of the Reserve Forces, and others are granted honorary Officer status. Despite this, no member of the Cadet Forces has any liability for military service or compulsory training in the Regular or Reserve Forces.

Sources and Data Quality Notes

Regular Reserve

Data on Naval Service and Army Regular Reservists at 1 April 2010, 2011, and 2012, and Royal Air Force Individuals Liable to Recall at 1 April 2010, 2011, and 2012 are not included in this publication. Tri-Service Regular Reserve data were not migrated across from legacy systems onto the Joint Personnel Administration (JPA) system, and any data subsequent to its introduction have been sourced from the single Services where available. The absence of Naval Service Regular Reserve data in 2006 was caused by the disestablishment of the secretariat responsible for the compilation of Naval Service Reserve data. In 2008, data were compiled by a reorganised secretariat, however concerns over the quality of the source data prohibited publication of the 2009, 2010, 2011 and 2012 Naval Service Regular Reserve data.

Due to discontinuity in time series data, no graphs for Regular Reserve data are presented.

Volunteer Reserve

Volunteer Reserve data appear on the JPA system, however there are known issues with the quality of the data. Naval Service Volunteer Reserve data at 1 April 2008 onwards were therefore sourced directly from the Naval Service. Army and Royal Air Force Volunteer Reserve data for 2008 onwards were sourced from JPA, however validation is ongoing and as such the figures presented here are provisional.

The Ministry of Defence is undertaking to improve the quality of Reserves data and it is hoped that this will result in an expanded and more robust TSP7 publication in future years.

Background Quality Report for TSP7

DASA will publish a background quality report for TSP7 on its website by the end of June 2012. This report will provide more detail on the data quality issues outlined above and include plans for improvements.

Feedback

DASA welcomes feedback on our statistical products. If you have any comments or questions about this publication or about DASA statistics in general, you can contact us as follows:

Contact DASA (Tri Service)

Tel. 0207 217 8896

Email dasa-quad-enquiries@mod.uk

Visit our website at www.dasa.mod.uk and complete the feedback form.

Table 1 - UK Reserve Forces at 1 April 2012¹

1 April 2012

Number

	All Services	Naval Service	Army	Royal Air Force
Total Reserves
Regular Reserve Forces
Regular Reserve Forces	6 660 ^r
Male Officers	240 ^r
Female Officers	50 ^r
Male Other Ranks	5 220 ^r
Female Other Ranks	1 150 ^r
Individuals liable to Recall
Male Officers	..	*	*	..
Female Officers	..	*	*	..
Male Other Ranks
Female Other Ranks
Volunteer Reserves	31 160	2 460
Volunteer Reserve	30 570	2 570	26 640	1 360
Male Officers	3 630	130
Female Officers	790	30
Male Other Ranks	19 600	1 010
Female Other Ranks	2 620	200
University Units	4 520	1 100
Male	3 370	710
Female	1 150	380

Source: DASA (Tri-Service)

1. Includes trained and untrained personnel. Includes Mobilised/Activated reservists but excludes personnel serving in an FTRS role. For more information see tables 2-4.

^r Due to a processing error, the number of RAF Regular Reserves has been under-reported in this publication. Following a data correction exercise, the Regular Reserves total has increased by 1,790 as a result of increases in each of the subcategories. Please see the introduction for more details.

Table 2 - Naval Service Reserve Forces at 1 April in each year

	Number					
	1992	2002	2007	2010	2011	2012
Total Reserves - Naval Service¹	39 580	31 500
Regular Reserves	32 560	26 520
Royal Fleet Reserve	18 440	13 170	13 210
Officers	11 870	8 940	8 800
<i>of which mobilised</i>	-	-	-	-
Other Ranks	6 570	4 230	4 410
<i>of which mobilised</i>	-	-	-	-
Recall Reserve	14 120	13 350
Officers	*	*	*	*	*	*
Other Ranks	14 120	13 350
Volunteer Reserves¹	7 030	4 980	3 680	3 590	3 230	.. ²
RNR and RMR (excl URNU)	7 030	4 140	2 970	2 930	2 540	2 570²
Officers	1 870	1 130	980	900	680	..
<i>of which mobilised</i>	30	40	40	..
Other Ranks	5 160	3 010	1 990	2 030	1 870	..
<i>of which mobilised</i>	50	110	100	..
University Royal Naval Units¹	..	840	710	660	680	..

Source: DASA (Tri-Service)

RNR = Royal Naval Reserve; RMR = Royal Marine Reserve

1. University Royal Naval Unit data are only available from 1997. Totals before 1997 do not include URNU. Data for 2012 are not available.

2. It is currently not possible to identify the numbers of officers and other ranks in the Royal Marine Reserve. Therefore the totals for Naval Service reserve officers and other ranks in 2012 are not available.

Table 3 - Army Reserve Forces¹ at 1 April in each year

	Number					
	1992	2002	2007 ²	2010 ³	2011 ³	2012 ³
Total Reserves - Army	259 860	201 970	158 610
Regular Reserves	188 540	161 060	121 820
Army Reserve	63 140	33 350	33 760
Officers ⁴	10 020	9 940	9 950
<i>of which mobilised</i>	..	20	10	- ^P	- ^P	-
Other Ranks	53 130	23 410	23 810
<i>of which mobilised</i>	..	240	110	30 ^P	20 ^P	20
Individuals liable to Recall⁵	125 390	127 710	88 060
Officers	*	*	*	*	*	*
Other Ranks	125 390	127 710	88 060
Volunteer Reserves Total	71 330	40 900	36 790	33 130^P	31 420^P	31 160
Volunteer Reserves⁶	70 090	34 930	30 640	27 410^P	25 820^P	25 420
Officers	7 770	5 590	5 100	4 220 ^P	4 150 ^P	4 020
<i>of which mobilised</i>	-	120	150	210 ^P	230 ^P	200
Other Ranks	62 320	29 340	25 550	23 120 ^P	21 660 ^P	21 400
<i>of which mobilised</i>	..	420	870	1 170 ^P	1 230 ^P	980
Non-Regular Permanent Staff (NRPS)	1 240	1 140	1 090	1 550^P	1 460^P	1 220
Officers	380	340	170	550 ^P	500 ^P	400
Other Ranks	860	800	920	1 000 ^P	950 ^P	820
Officer Training Corps (excl. NRPS)	..	4 840	5 060	4 140^P	4 120^P	4 520
Group A	..	110	60	*	*	*
Group B	..	4 730	5 000	4 140 ^P	4 120 ^P	4 520

Source: DASA (Tri-Service)

1. Officer figures from April 1998 to April 2004 are provisional estimates which include FTRS personnel.
2. Army reserves data for 2007 are at 1 March, due to the introduction of the Joint Personnel Administration
3. Since the introduction of the Joint Personnel System, there have been inconsistencies within TA personnel records and the subcategories are estimated using the information available. This has meant that a number of Cadet Force Adult Volunteer personnel are recorded as having an Assignment Type of Volunteer Reserve (approx 20 to 30). These personnel are included in the Volunteer Reserve total but are not included within the individual sub-populations. The MOD is undertaking work to rectify this anomaly; see commentary for more details.
4. Excludes RARO V.
5. Comprises the Army Long Term Reserve and Army Pensioners.
6. Comprises Territorial Army, Ulster Defence Regiment (before 1993) and Home Service Force (1983 to 1993)
7. Volunteer Reserves figures before 1989 include OTC and NRPS, before 1995 include OTC, and from 1998 exclude NRPS and OTC.

Due to ongoing validation of data from the Joint Personnel Administration system, all Army Reserves data in 2010 and 2011 are provisional and subject to review.

Table 4 - Royal Air Force Reserve Forces at 1 April in each year

	Number					
	1992	2002	2007	2010	2011	2012
Total Reserves - Royal Air Force	46 580	42 900	36 150 ^r
Regular Reserve Forces	44 760	40 310	33 980 ^r
Air Force Reserve	14 450	12 700	7 950 ^r	7 200 ^{pr}	6 900 ^{pr}	6 660 ^r
Officers	660	590	380 ^r	340 ^{pr}	310 ^{pr}	300 ^r
<i>of which mobilised</i>	..	-	10	10 ^p	10 ^p	10
Other Ranks	13 790	12 120	7 570 ^r	6 860 ^{pr}	6 600 ^{pr}	6 360 ^r
<i>of which mobilised</i>	..	-	10	10 ^p	20 ^p	10
Individuals liable to Recall ¹	30 310	27 610	26 030
Officers	..	26 920	25 010
Other Ranks	..	690	1 030
Volunteer Reserves	1 810	2 590	2 160	2 700 ^p	2 450 ^p	2 460
Royal Auxiliary Air Force ²	1 810	1 580	1 250	1 500 ^p	1 360 ^p	1 360
Officers	150	340	200	160 ^p	150 ^p	160
<i>of which mobilised</i>	..	10	10	20 ^p	10 ^p	10
Other Ranks	1 520	1 240	1 060	1 350 ^p	1 210 ^p	1 200
<i>of which mobilised</i>	..	70	190	100 ^p	70 ^p	60
University Air Squadrons (UAS) ³	-	1 000	910	1 200 ^p	1 080 ^p	1 100

Source: DASA (Tri-Service)

AWO = Adult Warrant Officer

1. Comprises Retired Officers and Airmen pensioners.
 2. Includes RAF Volunteer Reserve which was subsumed into the Royal Auxiliary Air Force on 1 April 1997.
 3. University Air Squadron data are only available from 1994. Totals before 1994 do not include UAS.
- r Due to an incorrect specification of data processing rules, the number of RAF Regular Reserves has been under-reported in this publication since the introduction of the Joint Personnel Administration system in 2006/7. Following a data correction exercise, the Regular Reserves total for 2012 has increased by 1,790, and totals for previous years have also been affected. Mobilised reservist figures are unaffected. Please see the introduction for more details.

Due to ongoing validation of data from the Joint Personnel Administration system, all RAF Reserves data in 2010 and 2011 are provisional and subject to review.

Table 5 - Relative Strength of Reserve Forces by Type at 1 April in each year

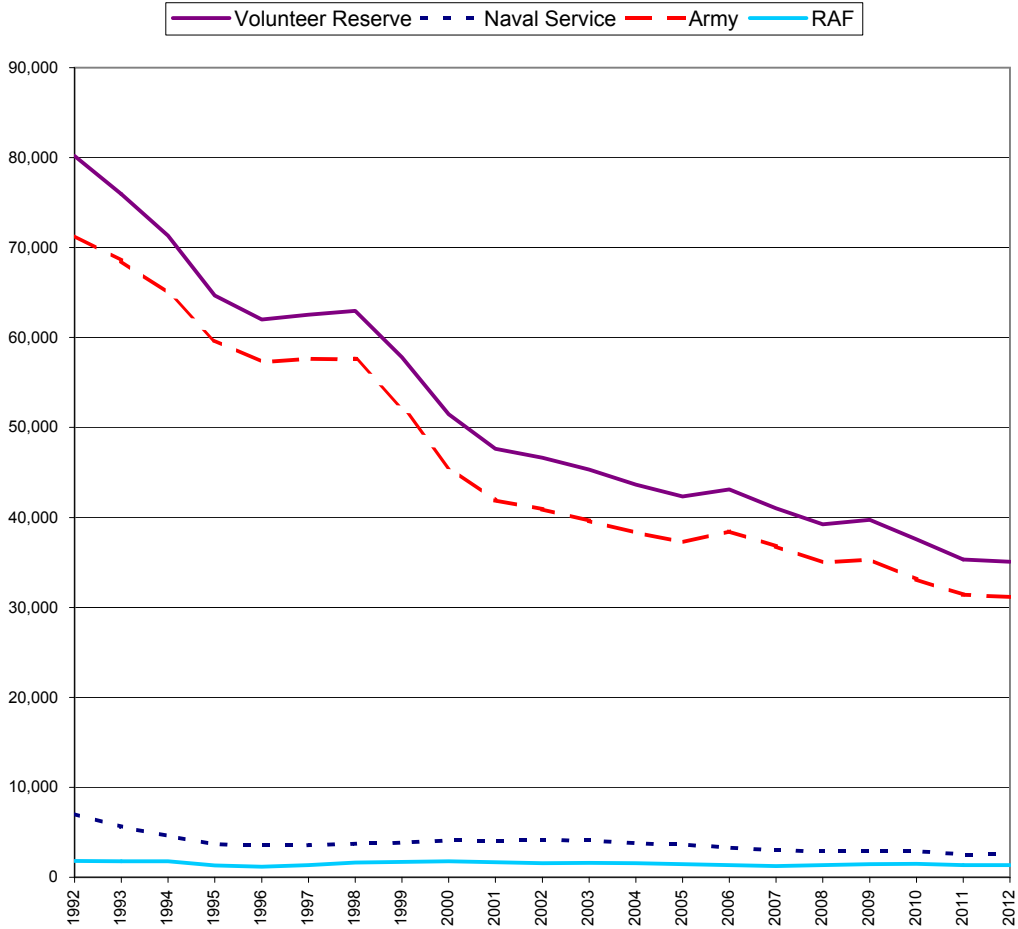
Index for 1992 = 100

	1992	2002	2007	2010	2011	2012
Total ¹	100	80
Naval Service	100	80
Army ¹	100	78	61
Royal Air Force	100	92	78
Regular Reserve Forces	100	62	57
Naval Service	100	71	72
Army ¹	100	53	53
Royal Air Force	100	88	55	50 ^{pr}	48 ^{pr}	46 ^r
Individuals liable to Recall	100	99
Naval Service	100	95
Army ¹	100	102	70
Royal Air Force	100	91	86
Volunteer Reserves	100	51	44	40 ^p	38 ^p	37
Naval Service ²	100	59	42	42	36	37
Army ^{1,3}	100	50	44	39 ^p	37 ^p	36
Royal Air Force ⁴	100	87	69	83 ^p	75 ^p	75

Source: DASA (Tri-Service)

1. Army Officer figures from April 1998 to April 2004 are provisional estimates which include FTRS personnel.
2. University Royal Naval Units data are unavailable before 1997, so are excluded from all the above figures.
3. Includes Non-Regular Permanent Staff and the Officer Training Corps. Excludes the Ulster Defence Regiment (UDR), which merged with the Royal Irish Rangers on 1 July 1992.
4. University Air Squadron data are unavailable before 1994, so are excluded from all the above figures.

Graph 1 - Strength of Volunteer Reserves by Service, 1992 - 2012



Royal Air Force and Naval Service figures exclude University Units because data are only available for these units from 1994 and 1997 respectively.
 The Ulster Defence Regiment and Home Service Force ceased to exist from 1993 and are excluded
 2006 Naval Service data are unavailable and have been interpolated.

Table 6a - Community Cadet Forces strengths at 1 April each year

	Number				
	2002	2007	2010	2011	2012
Community Cadet Forces¹	109 310	105 760	111 090	117 520	118 810
Cadets	88 340	84 790	88 860	93 010	94 730
Male Cadets	65 510	60 240	63 720	68 600	69 130
Female Cadets	22 840	24 550	25 140	24 410	25 600
Cadet Force Adult Volunteer	20 960	20 980	22 230	24 510	24 080
Male Adult Volunteer	15 800	15 690	16 320	17 610	17 520
Female Adult Volunteer	5 160	5 280	5 910	6 900	6 560
Sea Cadet Corps¹	18 150	12 550	11 910	18 510	19 050
Cadets	13 600	9 540	8 310	12 910	13 860
Male Cadets	8 800	6 000	5 500	8 550	9 120
Female Cadets	4 800	3 540	2 810	4 360	4 750
Cadet Force Adult Volunteer	4 560	3 010	3 600	5 600	5 190
Male Adult Volunteer	3 040	2 060	2 470	3 640	3 510
Female Adult Volunteer	1 520	950	1 130	1 960	1 670
Army Cadet Force	48 410	53 060	56 450	53 330	53 490
Cadets	40 700	44 720	46 990	44 890	45 110
Male Cadets	30 710	31 800	33 540	33 560	33 490
Female Cadets	10 000	12 920	13 460	11 330	11 620
Cadet Force Adult Volunteer	7 710	8 340	9 450	8 440	8 380
Male Adult Volunteer	5 960	6 160	6 830	6 180	6 150
Female Adult Volunteer	1 740	2 180	2 620	2 270	2 230
Air Training Corps	43 080	40 150	42 740	45 670	46 260
Cadets	34 050	30 520	33 560	35 210	35 750
Male Cadets	26 000	22 440	24 690	26 480	26 520
Female Cadets	8 040	8 080	8 870	8 730	9 230
Cadet Force Adult Volunteer	9 040	9 620	9 180	10 460	10 510
Male Adult Volunteer	6 800	7 460	7 020	7 790	7 860
Female Adult Volunteer	1 900	2 160	2 160	2 670	2 660

Source: DCDS Pers (RF&C), Single Services

1. From 1 April 2011, Sea Cadet Corps figures include juniors (10-11 year olds) whereas they were previously excluded.

Table 6b - Combined Cadet Force strengths at 1 April each year

	Number				
	2002	2007	2010	2011	2012
Combined Cadet Force	42 980	44 780	46 210	47 040	47 120
Cadets	40 970	42 590	44 130	44 890	45 020
Male Cadets	31 640	31 680	32 220	32 390	32 350
Female Cadets	9 330	10 910	11 910	12 500	12 660
Cadet Force Adult Volunteer	2 000	2 190	2 080	2 150	2 100
Male Adult Volunteer	1 610	1 710	1 520	1 560	1 520
Female Adult Volunteer	390	480	570	600	580
Naval Service	5 640	5 640	5 990	5 710	5 860
Cadets	5 340	5 330	5 660	5 410	5 540
Male Cadets	3 890	3 780	3 860	3 560	3 520
Female Cadets	1 450	1 550	1 800	1 850	2 020
Cadet Force Adult Volunteer	300	310	340	300	320
Male Adult Volunteer	240	240	240	220	220
Female Adult Volunteer	60	70	90	80	90
Army	27 400	28 850	29 970	31 440	31 420
Cadets	26 140	27 510	28 780	30 220	30 250
Male Cadets	20 230	20 460	21 010	21 850	21 920
Female Cadets	5 910	7 050	7 760	8 370	8 340
Cadet Force Adult Volunteer	1 260	1 340	1 200	1 220	1 170
Male Adult Volunteer	1 050	1 080	890	900	860
Female Adult Volunteer	210	260	310	320	310
Royal Air Force	9 940	10 290	10 240	9 890	9 840
Cadets	9 490	9 750	9 700	9 260	9 220
Male Cadets	7 520	7 440	7 350	6 980	6 910
Female Cadets	1 970	2 310	2 350	2 280	2 310
Cadet Force Adult Volunteer	440	540	550	630	620
Male Adult Volunteer	320	400	380	440	430
Female Adult Volunteer	120	140	160	190	190

Source: DCDS Pers (RF&C), Single Services

Table 7 - Community Cadet Forces Cadets¹ strengths by Service, age and sex at 1 April 2012

	Number			Percentage in category		
	Total	Male	Female	Total	Male	Female
Community Cadet Forces	94 780	69 210	25 570	100%	100%	100%
10	1 330	860	460	1.4%	1.2%	1.8%
11	2 040	1 340	700	2.2%	1.9%	2.7%
12	6 260	4 670	1 600	6.6%	6.7%	6.2%
13	19 700	14 910	4 800	20.8%	21.5%	18.8%
14	21 770	16 020	5 750	23.0%	23.1%	22.5%
15	17 980	13 050	4 940	19.0%	18.8%	19.3%
16	13 080	9 300	3 780	13.8%	13.4%	14.8%
17	8 190	5 870	2 320	8.6%	8.5%	9.1%
18	3 320	2 390	920	3.5%	3.5%	3.6%
19	1 120	810	300	1.2%	1.2%	1.2%
Sea Cadet Corps²	13 920	9 200	4 720	100%	100%	100%
10	1 330	860	460	9.5%	9.4%	9.8%
11	2 040	1 340	700	14.7%	14.6%	14.9%
12	2 200	1 450	750	15.8%	15.8%	15.8%
13	2 290	1 520	770	16.5%	16.6%	16.3%
14	2 230	1 490	740	16.0%	16.2%	15.8%
15	1 780	1 170	610	12.8%	12.7%	13.0%
16	1 280	870	410	9.2%	9.4%	8.8%
17	770	500	270	5.5%	5.4%	5.7%
<i>of which</i>						
Sea Cadets	12 290	7 710	4 580	100%	100%	100%
10	1 330	860	460	10.8%	11.2%	10.1%
11	2 040	1 340	700	16.6%	17.4%	15.3%
12	2 200	1 450	750	17.9%	18.8%	16.3%
13	2 020	1 270	750	16.4%	16.5%	16.3%
14	1 770	1 060	710	14.4%	13.8%	15.5%
15	1 370	790	580	11.1%	10.3%	12.6%
16	970	580	390	7.9%	7.6%	8.5%
17	590	350	250	4.8%	4.5%	5.4%
Royal Marine Cadets	1 630	1 490	140	100%	100%	100%
12	-	-	-	-	-	-
13	270	250	20	16.8%	16.9%	15.5%
14	460	420	40	28.3%	28.5%	25.4%
15	410	380	40	25.3%	25.2%	26.8%
16	310	280	20	18.9%	19.0%	17.6%
17	180	150	20	10.7%	10.3%	14.8%
Army Cadet Force³	45 110	33 490	11 620	100%	100%	100%
12	4 070	3 220	850	9.0%	9.6%	7.3%
13	9 960	7 770	2 200	22.1%	23.2%	18.9%
14	10 470	7 760	2 700	23.2%	23.2%	23.3%
15	9 020	6 530	2 480	20.0%	19.5%	21.4%
16	6 180	4 360	1 820	13.7%	13.0%	15.6%
17	3 770	2 680	1 100	8.4%	8.0%	9.4%
18	1 640	1 170	470	3.6%	3.5%	4.1%
Air Training Corps⁴	35 750	26 520	9 230	100%	100%	100%
13	7 450	5 620	1 830	20.8%	21.2%	19.8%
14	9 070	6 760	2 300	25.4%	25.5%	24.9%
15	7 190	5 350	1 840	20.1%	20.2%	19.9%
16	5 620	4 070	1 550	15.7%	15.3%	16.8%
17	3 650	2 690	960	10.2%	10.2%	10.4%
18	1 670	1 220	450	4.7%	4.6%	4.9%
19	1 120	810	300	3.1%	3.1%	3.3%

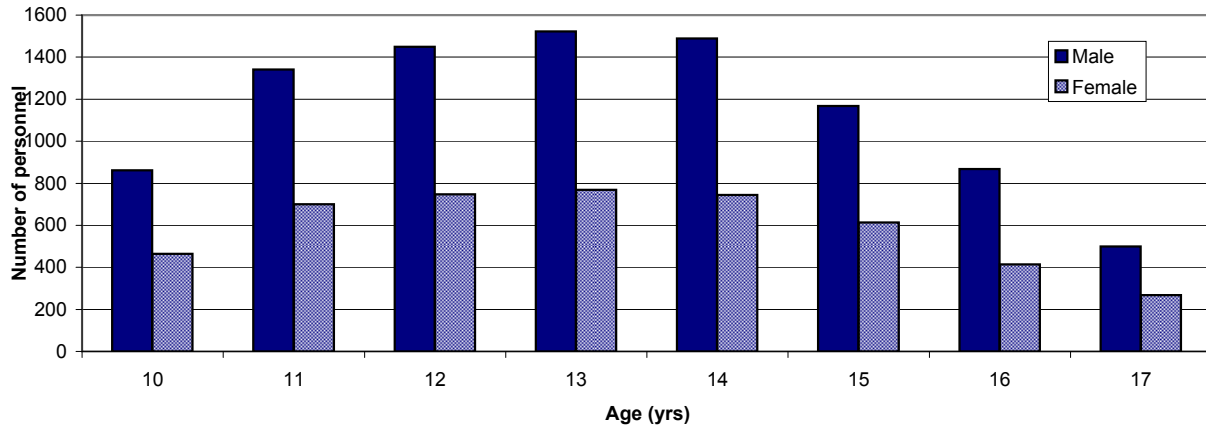
Source: DCDS Pers (RF&C), Single Services

Notes:

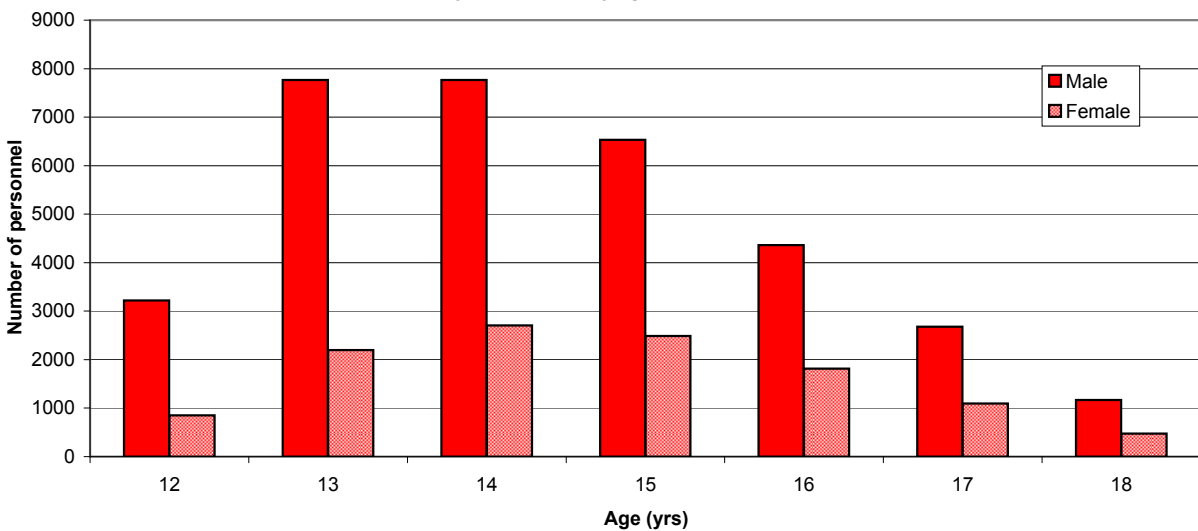
1. Totals include all Community Cadets but exclude all Community Cadet Force Adult Volunteers.
2. The lower age limit for the Sea Cadet Corps is 10 years (12 for Royal Marines Cadets) and the upper age limit is their 18th birthday.
3. The lower age limit for the Army Cadet Force is 12 years and in Year 8 and the upper age limit is 18 years and 9 months.
4. The lower age limit for the Air Training Corps is 13 years and the upper age limit is their 20th birthday.

Strength of Single Service Cadet Forces¹ by Service, age and sex at 1 April 2012

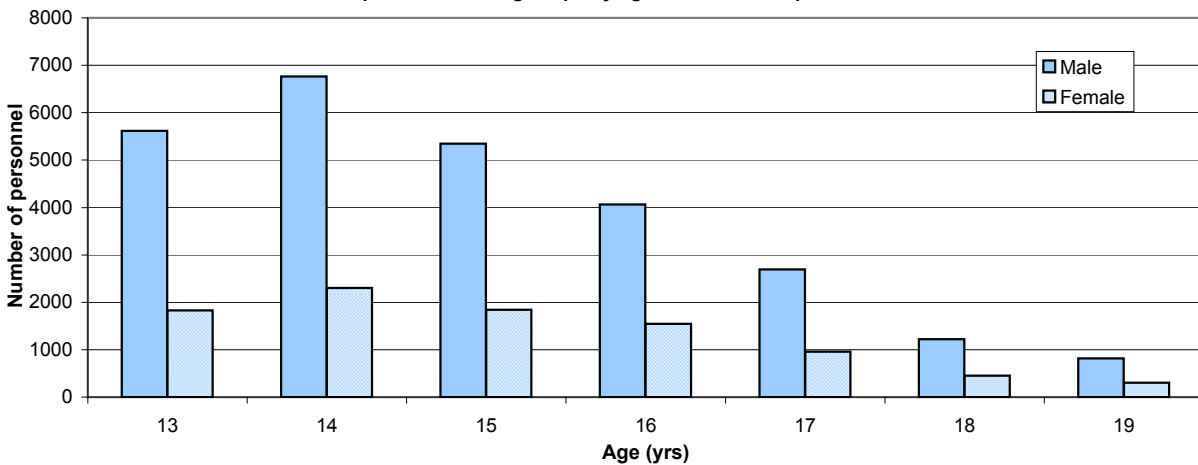
Graph 2: Sea Cadet Corps by age² and sex at 1 April 2012



Graph 3: Army Cadet Force by age³ and sex at 1 April 2012



Graph 4: Air Training Corps by age⁴ and sex at 1 April 2012



Notes:

1. Totals include all Single Service Cadet Forces but exclude all Instructors.
2. The lower age limit for the Sea Cadet Corp is 12 years (13 for Royal Marines Cadets) and the upper age limit
3. The lower age limit for the Army Cadet Force is 12 years and in Year 8 and the upper age limit is 18 years
4. The lower age limit for the Air Training Corps is 13 years and the upper age limit is their 20th birthday.

Table 8 - Combined Cadet Force Cadets¹ strengths by Service, age² and sex at 1 April 2012

	Number			Percentage in category		
	Total	Male	Female	Total	Male	Female
Combined Cadet Force	45 020	32 350	12 660	100%	100%	100%
12	280	220	60	0.6%	0.7%	0.5%
13	4 100	2 930	1 160	9.1%	9.1%	9.2%
14	11 170	8 000	3 180	24.8%	24.7%	25.1%
15	12 510	8 800	3 710	27.8%	27.2%	29.3%
16	8 630	6 250	2 380	19.2%	19.3%	18.8%
17	5 580	4 110	1 470	12.4%	12.7%	11.6%
18 and over	2 740	2 030	700	6.1%	6.3%	5.6%
Naval Service	5 540	3 520	2 020	100%	100%	100%
12	30	20	10	0.6%	0.7%	0.5%
13	340	190	160	6.2%	5.3%	7.8%
14	1 070	630	440	19.4%	18.0%	21.8%
15	1 600	1 000	610	29.0%	28.3%	30.0%
16	1 210	800	410	21.8%	22.6%	20.4%
17	840	580	260	15.2%	16.5%	12.8%
18 and over	440	300	130	7.9%	8.6%	6.6%
<i>of which:</i>						
Royal Navy	4 910	2 940	1 960	100%	100%	100%
12	30	20	10	0.7%	0.7%	0.6%
13	320	160	160	6.5%	5.6%	7.9%
14	960	530	430	19.6%	17.9%	22.0%
15	1 440	850	590	29.4%	29.0%	30.0%
16	1 040	640	390	21.1%	21.8%	20.1%
17	740	480	250	15.0%	16.5%	12.8%
18 and over	380	250	130	7.7%	8.5%	6.7%
Royal Marines	630	580	60	100%	100%	100%
12	-	-	-	-	-	-
13	20	20	-	3.6%	3.8%	-
14	110	100	10	17.9%	18.2%	14.5%
15	160	140	20	25.6%	25.1%	30.9%
16	170	160	20	27.3%	26.8%	32.7%
17	100	100	10	16.6%	16.8%	14.5%
18 and over	60	50	-	8.8%	9.2%	-
Army	30 250	21 920	8 340	100%	100%	100%
12	200	160	40	0.7%	0.7%	0.5%
13	3 070	2 220	850	10.2%	10.1%	10.2%
14	8 060	5 840	2 220	26.6%	26.6%	26.6%
15	8 370	5 940	2 430	27.7%	27.1%	29.2%
16	5 470	3 980	1 500	18.1%	18.1%	17.9%
17	3 410	2 540	870	11.3%	11.6%	10.5%
18 and over	1 670	1 250	420	5.5%	5.7%	5.0%
Royal Air Force	9 220	6 910	2 310	100%	100%	100%
12	40	40	-	0.5%	0.6%	-
13	680	530	160	7.4%	7.6%	6.8%
14	2 040	1 530	520	22.2%	22.1%	22.4%
15	2 540	1 870	670	27.5%	27.1%	29.0%
16	1 950	1 480	470	21.1%	21.4%	20.4%
17	1 320	990	340	14.4%	14.3%	14.7%
18 and over	640	480	150	6.9%	7.0%	6.5%

Source: DCDS Pers (RF&C), Single Services

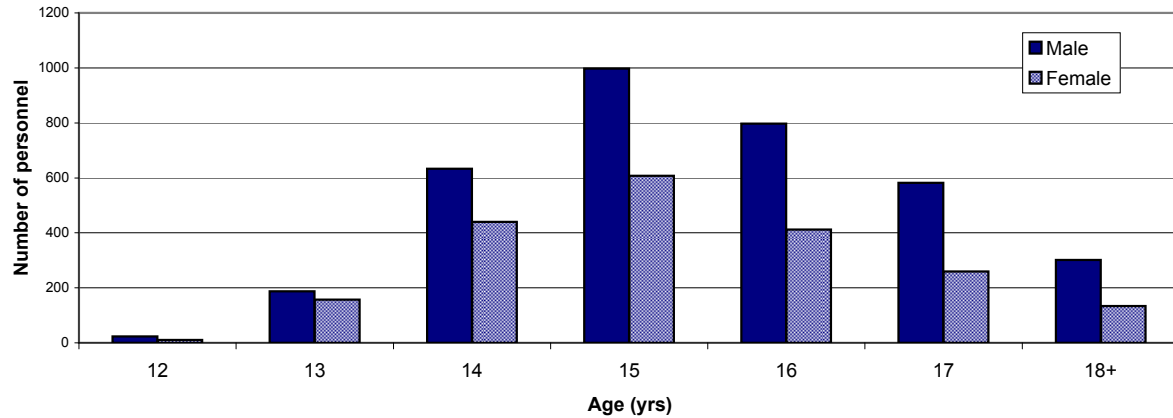
Notes:

1. Totals include all Combined Cadet Force Cadets but exclude all Combined Cadet Force Adult Volunteers.
2. The lower age limit for the Combined Cadet Force is 12 years old and the upper age limit relates to the end of the summer holidays of their final year of school.

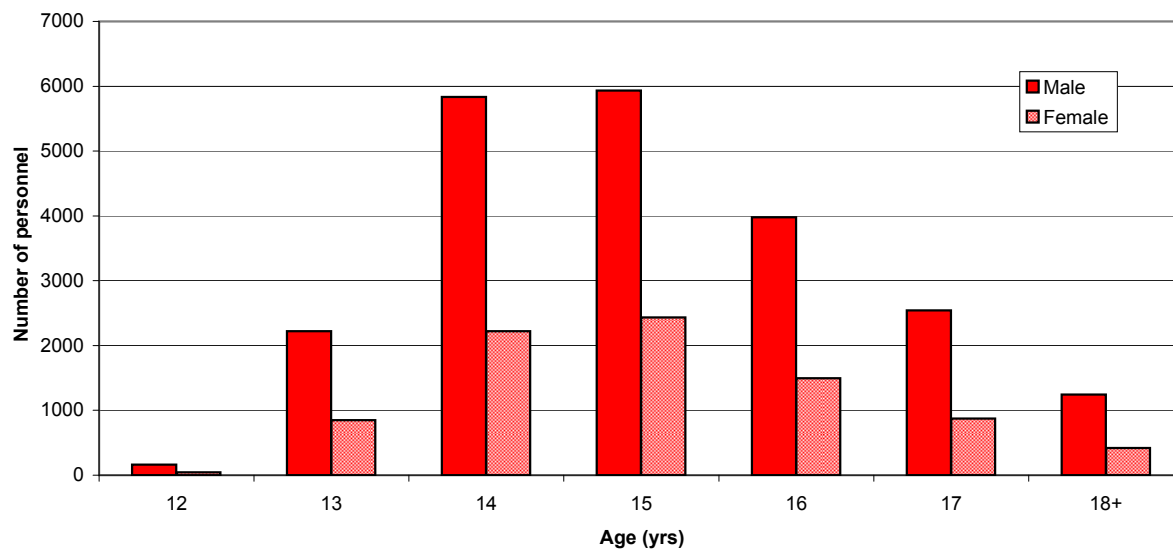
- denotes zero or rounded to zero, percentages are not shown.

Strength of Combined Cadet Force¹ by service, age² and sex at 1 April 2012

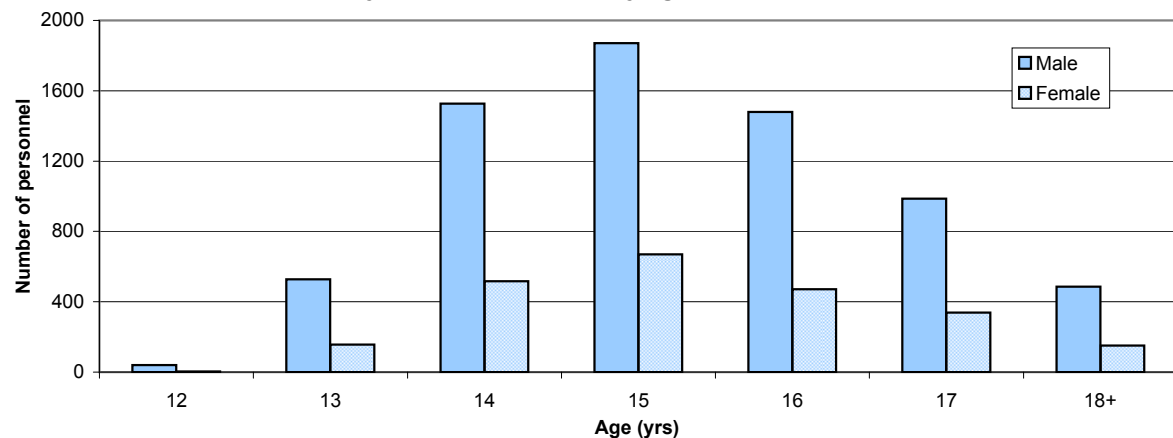
Graph 5: Naval Service Cadets by age and sex at 1 April 2012



Graph 6: Army Cadets by age and sex at 1 April 2012



Graph 7: Royal Air Force Cadets by age and sex at 1 April 2012



Notes:

1. Totals include all Combined Cadet Forces Cadets but exclude all Combined Cadet Force instructors.
2. The lower age limit for the Combined Cadet Force is 12 years old and the upper age limit relates to the end of the summer holidays of their final year of school.

Table 9a - Community Cadet Force Adult Volunteers (CFAV) strengths by Service and sex at 1 April 2012

	Number			Percentage in category		
	Total	Male	Female	Total	Male	Female
Community Cadet Forces Adult Volunteers	24 080	17 520	6 560	100%	100%	100%
Uniformed Adult Volunteer	16 280	12 000	4 280	68%	68%	65%
Non-Uniformed Adult Volunteer	7 800	5 520	2 270	32%	32%	35%
Sea Cadet Corps	5 190	3 510	1 670	100%	100%	100%
Uniformed Adult Volunteer	3 710	2 530	1 180	72%	72%	70%
Non-Uniformed Adult Volunteer	1 480	980	500	28%	28%	30%
Army Cadet Force	8 380	6 150	2 230	100%	100%	100%
Uniformed Adult Volunteer	8 380	6 150	2 230	100%	100%	100%
Non-Uniformed Adult Volunteer	-	-	-	-	-	-
Air Training Corps	10 510	7 860	2 660	100%	100%	100%
Uniformed Adult Volunteer	4 190	3 310	880	40%	42%	33%
Non-Uniformed Adult Volunteer	6 320	4 540	1 780	60%	58%	67%

Source: DCDS Pers (RF&C), Single Services

Table 9b - Combined Cadet Force Adult Volunteers (CFAV) strengths by Service and sex at 1 April 2012

	Number			Percentage in category		
	Total	Male	Female	Total	Male	Female
Combined Cadet Force Adult Volunteers	2 100	1 520	580	100%	100%	100%
Naval Service	320	220	90	100%	100%	100%
Uniformed Adult Volunteer	320	220	90	100%	100%	100%
Non-Uniformed Adult Volunteer	-	-	-	-	-	-
Royal Navy	260	180	80	100%	100%	100%
Uniformed Adult Volunteer	260	180	80	100%	100%	100%
Non-Uniformed Adult Volunteer	-	-	-	-	-	-
Royal Marines	50	40	10	100%	100%	-
Uniformed Adult Volunteer	50	40	10	100%	100%	-
Non-Uniformed Adult Volunteer	-	-	-	-	-	-
Army	1 170	860	310	100%	100%	100%
Uniformed Adult Volunteer	1 170	860	310	100%	100%	100%
Non-Uniformed Adult Volunteer	-	-	-	-	-	-
Royal Air Force	620	430	190	100%	100%	100%
Uniformed Adult Volunteer	620	430	190	100%	100%	100%
Non-Uniformed Adult Volunteer	-	-	-	-	-	-

Source: DCDS Pers (RF&C), Single Services