



Ministry  
of Defence



# Military Search and Rescue Annual Statistics 2012

Published: 31 January 2013

**Coverage**

United Kingdom, Cyprus, Falkland Islands

**Theme**

Defence

**Issued by**

Defence Analytical Services and Advice  
Ministry of Defence  
Oak 0W, Abbey Wood  
Bristol BS34 8SJ

**Internet**

[www.dasa.mod.uk](http://www.dasa.mod.uk)

**Enquiries**

Press Office  
020 721 83255

**Responsible Statistician**

DASA DESA Price Indices - Head of Branch  
030 679 32100  
[dasadesa-pi-hob@mod.uk](mailto:dasadesa-pi-hob@mod.uk)

**Other Statistical Enquiries**

DASA DESA Price Indices - Analyst 1  
030 679 34524  
[dasadesa-pi-1@mod.uk](mailto:dasadesa-pi-1@mod.uk)

The United Kingdom Statistics Authority has designated these statistics as National Statistics, in accordance with the Statistics and Registration Service Act 2007 and signifying compliance with the Code of Practice for Official Statistics.

Designation can be broadly interpreted to mean that the statistics:

- meet identified user needs;
- are well explained and readily accessible;
- are produced according to sound methods,
- and are managed impartially and objectively in the public interest.

Once statistics have been designated as National Statistics it is a statutory requirement that the Code of Practice shall continue to be observed.

## Military SAR Statistics

This report covers military Search and Rescue (SAR) activities for 2012. The report includes the number of incidents (i.e. the number of emergencies that military SAR units have responded to), the number of callouts (i.e. the number of units attending an incident) and the number of persons moved. There is a strong seasonal pattern to SAR callouts, with the peak activity occurring in Q3, corresponding to the warmer summer months when people are more active around the coast and mountains of the UK. The long term trend shows that SAR callouts peaked in 2009, and since then there has been a reduction in callout numbers, reverting towards the long term average. Over the past ten years, annual callout numbers have averaged 1,973. During 2012, there were 1,865 callouts.

## Key Points

- During 2012 there were 1,761 incidents resulting in 1,865 callouts and 1,547 persons moved. The number of incidents, callouts and persons moved were all lower than in 2011. The number of callouts and incidents during 2012 was the lowest of any year since 2005 (Table 2).
- The unit with the highest number of callouts during 2012 was RAF Valley, with 300 callouts. This is the first year since 2006 that any unit other than HMS Gannet has had the highest number of callouts. It is also the first time since 1985 that RAF Valley has had the highest number of callouts in a year (Table 7).
- Callouts requested by the coastguard represented 39% of UK callouts during 2012. Whilst callouts requested by the coastguard represented the largest group during 2012, the number of such callouts decreased by 11% between 2011 and 2012, while the number of callouts requested by the ambulance service increased by 5% (Figure 6).
- The total Mountain Rescue Team man hours during 2012 was 11,521. This was over three times higher than the figure for 2011, and was the highest total man hours recorded in any year since 2001. There were a number of large incidents during 2012 searching for missing persons, which contributed to the large total man hours (Figure 57).
- 2012 was the second wettest year on record in the UK, while April and June were both the wettest for their respective months on records. As a result, there were a number of incidents of flooding throughout the year to which the SAR forces responded.

## What is included in this report

This report covers military SAR activities for 2012. It includes details of the activities of UK military SAR helicopters, RAF SAR helicopters operating in Cyprus and the Falkland Islands, and military MRT units. It also provides a summary of Maritime and Coastguard Agency (MCA) helicopter callouts. Additionally, military SAR reports are produced on a monthly and annual basis, available at the

<http://www.dasa.mod.uk/index.php?pub=SAR-REPORT-QTRLY>  
<http://www.dasa.mod.uk/index.php?pub=SAR-REPORT-ANNUAL>

The report includes counts of the number of incidents, callouts and persons moved in the previous month.

*Incidents* are emergencies attended by Royal Navy or Royal Air Force units whose primary task is SAR, plus other military aircraft and ships that are available to the Aeronautical Rescue Co-ordination Centre (ARCC).

Each SAR unit attending an incident is described as a *callout*. An incident may result in one or more callouts.

*Persons moved* involves moving people from a hostile environment to a safe environment, or to a medical facility to receive urgent medical attention. It may also involve moving individuals between medical facilities at the request of the NHS.

The data source for this report is a weekly download from the ARCC database. Every incident recorded by the ARCC is included in these tables. Incident data from Cyprus and the Falklands is received by email on an ad hoc basis and may be incomplete. All data is validated and checked by DASA on receipt. Further details are available in DASA's SAR Background Quality Report. This also includes details of internal and external users of the reports, including a summary of their requirements and how well DASA's reports meet these requirements.

<http://www.dasa.mod.uk/applications/newWeb/www/apps/publications/pubViewFile.php?content=2100&date=2012-01-23&type=pdf&PublishTime=09:30:00>

## Introduction

### ***Military Search and Rescue***

The military Search and Rescue (SAR) service exists primarily to assist military personnel in difficulty, although the majority of its work involves assisting civilians in distress, both on land and at sea. SAR coverage for the United Kingdom and a large area of the surrounding sea is provided 24 hours a day and 365 days a year by the RAF and the Royal Navy.

#### *UK Helicopters*

The UK military SAR aeronautical coverage currently consists of RAF and Royal Navy SAR Sea King helicopters operating from eight locations around the UK (RAF Boulmer, RAF Lossiemouth, RAF Leconfield, RAF Valley, RAF Chivenor, RAF Wattisham, RNAS Culdrose and HMS Gannet). The military SAR force operates 24 hours a day. It provides coverage throughout the UK, and also covers an area extending from the Faroe Islands in the north, the English Channel in the south, about half way across the North Sea to the east and halfway across the Atlantic Ocean to the west.

The UK SAR helicopter coverage is coordinated by the Aeronautical Rescue Coordination Centre (ARCC) based at Kinloss Barracks.

#### *Mountain Rescue Teams*

The RAF has four mountain rescue teams (MRT), based at RAF Lossiemouth, RAF Leuchars, RAF Leeming and RAF Valley. The MRT units provide land rescues, primarily over the mountain regions of the UK. Military MRT units are coordinated by the ARCC, and often work in conjunction with helicopter units. During July 2012, MRT Lossiemouth was formed by the transfer of the existing team based at Kinloss.

#### *Overseas Helicopters*

A SAR service is also provided by two overseas bases, at RAF Akrotiri in Cyprus and RAF Mount Pleasant in the Falkland Islands.

Further information on the UK's military SAR coverage is available at:

<http://www.raf.mod.uk/rafsearchandrescue/>

<http://www.royalnavy.mod.uk/Operations/Enduring-Operations/UK/Search-and-Rescue>

### ***Other Search and Rescue***

In addition to the RAF and Royal Navy, a number of non-military organisations provide SAR coverage throughout the UK. The activities of these non-military organisations is outside the scope of this report, however background information on some of the organisations involved is provided below.

#### *Maritime and Coastguard Agency*

In addition to the eight military aeronautical SAR units, additional aeronautical SAR coverage is provided by four Maritime and Coastguard Agency (MCA) helicopter units. Although these are not part of the military SAR service, the MCA helicopters are coordinated by the ARCC at Kinloss Barracks, to provide integrated coverage across the UK. Details of their activities are included in the SAR Quarterly and Annual reports.

In addition to its aeronautical coverage, the MCA provides maritime SAR coverage throughout the UK. Details of maritime SAR callouts are not included in this report. Further information is available at:

<http://www.dft.gov.uk/mca/mcga07-home/emergencyresponse/mcga-searchandrescue.htm>

#### *RNLI*

The RNLI is a charitable organisation providing 24 hour lifeboat SAR coverage around the coast of the UK and Republic of Ireland, along with a seasonal lifeguard service.

<http://www.rnli.org.uk/>

#### *Mountain Rescue Teams*

A number of voluntary Mountain Rescue services operate throughout the UK. These often work in conjunction with the military SAR service. Details of non-military Mountain Rescue callouts are not included in this report. Further information can be found at:

<http://www.mountain.rescue.org.uk/>

<http://www.mrcofs.org/>

#### *Air Ambulance*

Air Ambulance services operate throughout the UK, providing emergency medical assistance. Further information is available at:

<http://www.airambulanceassociation.co.uk/>

## 1. Search and Rescue Summary

This section provides a summary of SAR activity for 2012, covering both helicopter and mountain rescue units for the UK and Overseas.

**Table 1** shows the incidents, callouts and persons moved during 2012 by month. August was the month with the most SAR callouts this year (244). The summer months generally see the highest number of callouts each year. During the warmer weather there is generally an increase in the number of people participating in outdoor activities at the coast or in the mountains, which results in an increased requirement for assistance from the military SAR service.

**Table 2** and **Figure 1** show the number of annual incidents, callouts and persons moved between 2003 and 2012. Between 2004 and 2009 the number of callouts increased year-on-year. The callout numbers peaked in 2009, and since then the number of callouts has fallen year-on-year. The number of callouts during 2012 was around 3% lower than in 2011. This fall in callout numbers represents a return to close to the long term average callout numbers.

**Table 3** and **Figure 2** show the number of quarterly incidents, callouts and persons between 2003 and 2012. SAR activity shows a strong seasonal pattern. The busiest quarter is always Q3, corresponding to the warmer summer months and the increased participation in outdoor activities.

**Table 4** shows the location and category of callouts in 2012. Maritime incidents are those that occur more than 3 nautical miles from the high tide line. Coastal incidents are those occurring between the high tide line and 3 nautical miles out to sea. All other incidents are classed as land. Land incidents can include those occurring at inland waterways, such as lakes or rivers. Approximately 68% of all callouts during 2012 occurred on land.

**Table 4** also shows the category of the callout. This records the type of environment to which the callout is made. The categories are 'aero' for incidents involving aeronautical accidents, 'ship' for casualties located on a ship or large boat, 'leisure craft' for casualties on a smaller vessel such as a yacht or a dinghy, 'rig' for casualties on an oil rig, 'beacon' or 'flare' for callouts responding to these types of distress signals, and 'person' for an individual not on any of the aforementioned structures. The vast majority of callouts are categorised as 'person' (82% during 2012).

**Figure 3** shows the locations of callouts over the past five years, on a quarterly basis. As mentioned above, the majority of callouts are on land (averaging around 66% of all callouts over the past five years). Both land and coast callouts show a seasonal pattern, with the peaks occurring in the summer months of Q3. Maritime callouts only show a very slight seasonal pattern, as these callouts are generally in response to people taken sick on boats, which does not depend on the season.

**Figure 4** shows the split for 2012 between callouts to civilian casualties and those to military casualties. Although the military SAR service exists primarily to assist military personnel, the vast majority of their work is to assist civilian casualties. During 2012 97% of callouts were to civilians, which is consistent with the long term average.

## 1. Search and Rescue Summary

Figure 5 shows UK callouts over the past five years grouped according to the categories shown on page 55 of this report. Essentially the 'Rescue-Type' callouts are those where a person was moved without the need for an extensive search, 'Search-Type' callouts are those where a search was performed due to an unknown casualty location, 'Assistance-Type' are those where the unit provided assistance without moving a casualty, and 'Other' are those where the SAR unit was ultimately not needed.

The majority of callouts are generally 'Rescue-Type', averaging around 56% of all callouts over the past five years. These show a seasonal pattern, with the peak usually occurring in Q3 each year. Callouts grouped as 'Other' also show a seasonal pattern. There is less seasonality in the 'Search-Type' and 'Assistance-Type' callouts, although these quarterly series are based on relatively low numbers of callouts.

Figure 6 shows the requesting organisations for UK callouts for 2012. These are the organisations that initially requested the assistance of a military SAR unit. Figure 7 shows a quarterly time series over the past five years.

The coastguard requested 39% of UK callouts during 2012, more than the police or ambulance services. The coastguard often has the highest number of requests. The number of coastguard requests is highly seasonal, with the peak in Q3 corresponding to more people being active around coastal areas. There is less of a seasonal pattern to police or ambulance requested callouts, which are generally in response to road traffic accidents, missing persons, or transfers between hospitals. These broadly occur equally throughout the year, although the series are volatile due to relatively low numbers.

Whilst callouts requested by the coastguard represented the largest group during 2012, there was actually a substantial decrease in such callouts between 2011 and 2012 (approximately 11% fewer callouts were requested by the coastguard in 2012 than in 2011). Callouts requested by the ambulance service saw an annual increase between 2011 and 2012 of around 5%.

Map 1 shows the location of all UK callouts during 2012. The peak areas of activity tend to be the Scottish Highlands, north Wales and the south west coast of England. There is also regular activity throughout much of the coastline of the UK, and also into the North Sea and the Atlantic Ocean. There is a noticeable lack of callouts attended by military units along the south coast of England, as coverage in this area is typically provided by the Maritime and Coastguard Agency (see section 13).

Table 5 shows UK callouts by Government Office Region between 2003 and 2012. The region with the highest number of callouts during 2012 was Scotland (24% of all UK callouts), followed by Wales (19%) and the South West (15%). The proportion of callouts in Scotland has remained fairly constant over the past decade, while the proportions of callouts in Wales and the South West have shown an increase, in particular since 2009.

Table 6 shows the number of persons moved by Government Office Region between 2003 and 2012. This shows a similar pattern to the number of callouts in Table 5, although the number of persons moved in Wales is relatively high compared to the number of callouts (an average of 0.96 persons moved per callout, compared with a national average of 0.83). There were a number of callouts attended by RAF Valley in Wales which resulted in a high number of persons moved, including 14 walkers who had become lost on Cadair Idris in August, and nine people rescued from a flooded campsite near Borth in June.

Map 2 shows the same data as Table 5, with the colour density of each region representing the number of callouts. As shown in Table 5, the regions with the highest number of callouts are Scotland, Wales and the South West.

# 1. Search and Rescue Summary

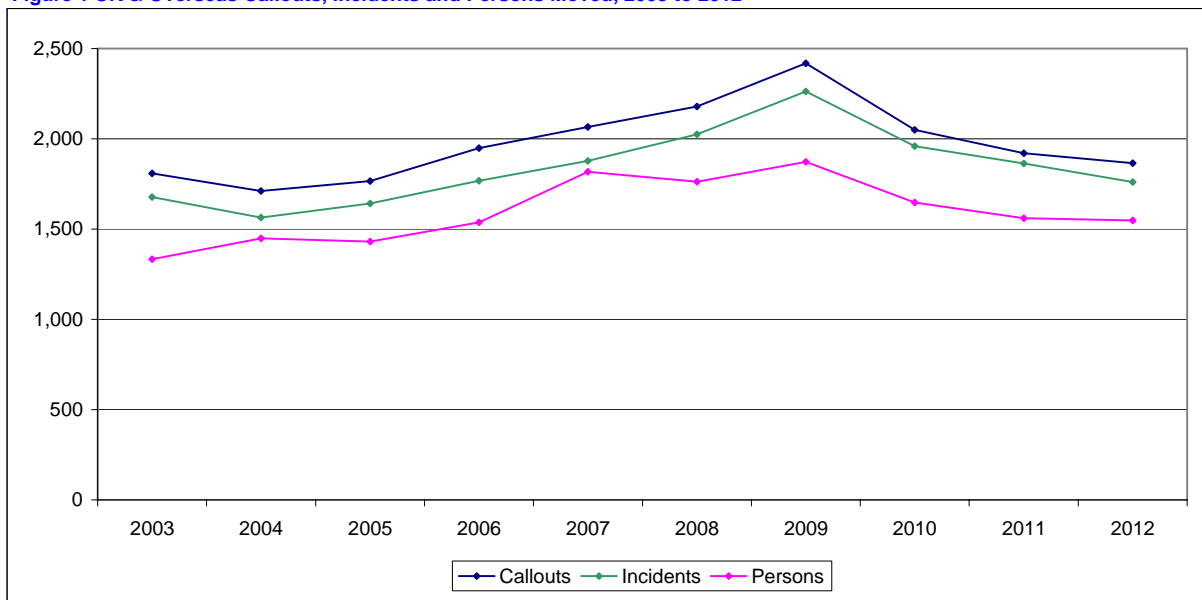
Table 1 UK & Overseas Callouts, Incidents and Persons Moved, 2012

|                   |           | Total Callouts | UK Helicopters | Overseas Helicopter | Mountain Rescue | Incidents    | Persons Moved |
|-------------------|-----------|----------------|----------------|---------------------|-----------------|--------------|---------------|
| <b>2012</b>       | January   | 123            | 116            | 0                   | 7               | 114          | 93            |
|                   | February  | 106            | 96             | 6                   | 4               | 101          | 78            |
|                   | March     | 109            | 103            | 3                   | 3               | 105          | 128           |
|                   | April     | 138            | 128            | 3                   | 7               | 127          | 119           |
|                   | May       | 178            | 173            | 1                   | 4               | 170          | 138           |
|                   | June      | 199            | 196            | 1                   | 2               | 194          | 163           |
|                   | July      | 209            | 198            | 1                   | 10              | 199          | 159           |
|                   | August    | 244            | 237            | 2                   | 5               | 237          | 204           |
|                   | September | 157            | 149            | 1                   | 7               | 147          | 124           |
|                   | October   | 146            | 132            | 3                   | 11              | 132          | 122           |
|                   | November  | 115            | 103            | 4                   | 8               | 107          | 103           |
|                   | December  | 141            | 130            | 3                   | 8               | 128          | 116           |
| <b>2012 TOTAL</b> |           | <b>1,865</b>   | <b>1,761</b>   | <b>28</b>           | <b>76</b>       | <b>1,761</b> | <b>1,547</b>  |

Table 2 UK & Overseas Callouts, Incidents and Persons Moved, 2003 to 2012

|      | Incidents |       |          | Callouts |       |          | Persons Moved |       |          |
|------|-----------|-------|----------|----------|-------|----------|---------------|-------|----------|
|      | All       | UK    | Overseas | All      | UK    | Overseas | All           | UK    | Overseas |
| 2003 | 1,677     | 1,600 | 77       | 1,809    | 1,714 | 95       | 1,333         | 1,277 | 56       |
| 2004 | 1,564     | 1,504 | 60       | 1,711    | 1,638 | 73       | 1,449         | 1,414 | 35       |
| 2005 | 1,641     | 1,584 | 57       | 1,766    | 1,702 | 64       | 1,431         | 1,384 | 47       |
| 2006 | 1,767     | 1,703 | 64       | 1,948    | 1,875 | 73       | 1,538         | 1,463 | 75       |
| 2007 | 1,877     | 1,803 | 74       | 2,065    | 1,973 | 92       | 1,817         | 1,767 | 50       |
| 2008 | 2,025     | 1,941 | 84       | 2,179    | 2,083 | 96       | 1,763         | 1,607 | 156      |
| 2009 | 2,262     | 2,191 | 71       | 2,418    | 2,337 | 81       | 1,873         | 1,810 | 63       |
| 2010 | 1,960     | 1,901 | 59       | 2,050    | 1,983 | 67       | 1,647         | 1,605 | 42       |
| 2011 | 1,864     | 1,801 | 63       | 1,921    | 1,856 | 65       | 1,560         | 1,501 | 59       |
| 2012 | 1,761     | 1,733 | 28       | 1,865    | 1,837 | 28       | 1,547         | 1,522 | 25       |

Figure 1 UK & Overseas Callouts, Incidents and Persons Moved, 2003 to 2012

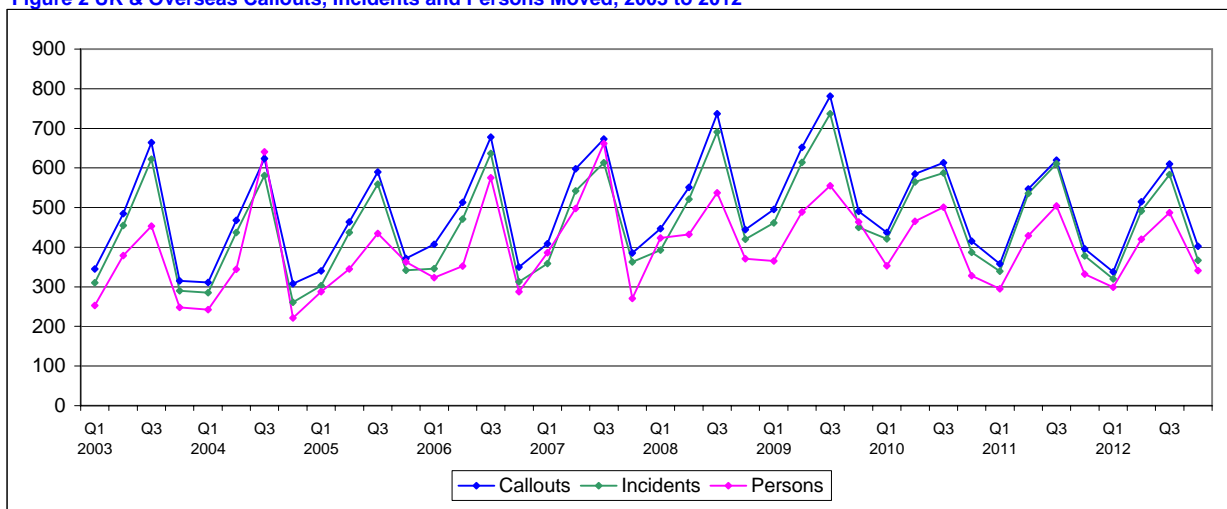


# 1. Search and Rescue Summary

Table 3 UK & Overseas Callouts, Incidents and Persons Moved, 2003 to 2012

|         | Incidents |     |          | Callouts |     |          | Persons Moved |     |          |
|---------|-----------|-----|----------|----------|-----|----------|---------------|-----|----------|
|         | All       | UK  | Overseas | All      | UK  | Overseas | All           | UK  | Overseas |
| 2003 Q1 | 310       | 296 | 14       | 345      | 331 | 14       | 253           | 235 | 18       |
| Q2      | 455       | 441 | 14       | 485      | 467 | 18       | 379           | 370 | 9        |
| Q3      | 622       | 603 | 19       | 664      | 633 | 31       | 453           | 446 | 7        |
| Q4      | 290       | 260 | 30       | 315      | 283 | 32       | 248           | 222 | 26       |
| 2004 Q1 | 285       | 277 | 8        | 311      | 303 | 8        | 242           | 234 | 8        |
| Q2      | 437       | 418 | 19       | 468      | 445 | 23       | 344           | 332 | 12       |
| Q3      | 581       | 557 | 24       | 624      | 595 | 29       | 641           | 627 | 14       |
| Q4      | 261       | 252 | 9        | 308      | 295 | 13       | 221           | 218 | 3        |
| 2005 Q1 | 303       | 292 | 11       | 340      | 328 | 12       | 288           | 275 | 13       |
| Q2      | 437       | 418 | 19       | 464      | 442 | 22       | 345           | 337 | 8        |
| Q3      | 559       | 545 | 14       | 590      | 573 | 17       | 435           | 425 | 10       |
| Q4      | 342       | 329 | 13       | 372      | 359 | 13       | 363           | 347 | 16       |
| 2006 Q1 | 346       | 334 | 12       | 407      | 394 | 13       | 323           | 310 | 13       |
| Q2      | 471       | 451 | 20       | 513      | 488 | 25       | 352           | 340 | 12       |
| Q3      | 637       | 612 | 25       | 678      | 651 | 27       | 575           | 560 | 15       |
| Q4      | 313       | 306 | 7        | 350      | 342 | 8        | 288           | 253 | 35       |
| 2007 Q1 | 359       | 339 | 20       | 409      | 387 | 22       | 386           | 370 | 16       |
| Q2      | 542       | 524 | 18       | 598      | 572 | 26       | 498           | 488 | 10       |
| Q3      | 613       | 588 | 25       | 673      | 640 | 33       | 662           | 650 | 12       |
| Q4      | 363       | 352 | 11       | 385      | 374 | 11       | 271           | 259 | 12       |
| 2008 Q1 | 393       | 361 | 32       | 447      | 412 | 35       | 423           | 304 | 119      |
| Q2      | 521       | 494 | 27       | 551      | 519 | 32       | 432           | 412 | 20       |
| Q3      | 691       | 680 | 11       | 737      | 724 | 13       | 537           | 530 | 7        |
| Q4      | 420       | 406 | 14       | 444      | 428 | 16       | 371           | 361 | 10       |
| 2009 Q1 | 461       | 436 | 25       | 495      | 470 | 25       | 365           | 334 | 31       |
| Q2      | 614       | 602 | 12       | 652      | 637 | 15       | 489           | 484 | 5        |
| Q3      | 737       | 725 | 12       | 781      | 768 | 13       | 555           | 552 | 3        |
| Q4      | 450       | 428 | 22       | 490      | 462 | 28       | 464           | 440 | 24       |
| 2010 Q1 | 421       | 402 | 19       | 437      | 418 | 19       | 353           | 337 | 16       |
| Q2      | 565       | 553 | 12       | 585      | 570 | 15       | 465           | 462 | 3        |
| Q3      | 587       | 574 | 13       | 613      | 597 | 16       | 501           | 491 | 10       |
| Q4      | 387       | 372 | 15       | 415      | 398 | 17       | 328           | 315 | 13       |
| 2011 Q1 | 339       | 319 | 20       | 358      | 337 | 21       | 295           | 283 | 12       |
| Q2      | 536       | 523 | 13       | 547      | 533 | 14       | 429           | 418 | 11       |
| Q3      | 611       | 596 | 15       | 620      | 605 | 15       | 504           | 487 | 17       |
| Q4      | 378       | 363 | 15       | 396      | 381 | 15       | 332           | 313 | 19       |
| 2012 Q1 | 320       | 311 | 9        | 338      | 329 | 9        | 299           | 292 | 7        |
| Q2      | 491       | 486 | 5        | 515      | 510 | 5        | 420           | 417 | 3        |
| Q3      | 583       | 579 | 4        | 610      | 606 | 4        | 487           | 481 | 6        |
| Q4      | 367       | 357 | 10       | 402      | 392 | 10       | 341           | 332 | 9        |

Figure 2 UK & Overseas Callouts, Incidents and Persons Moved, 2003 to 2012



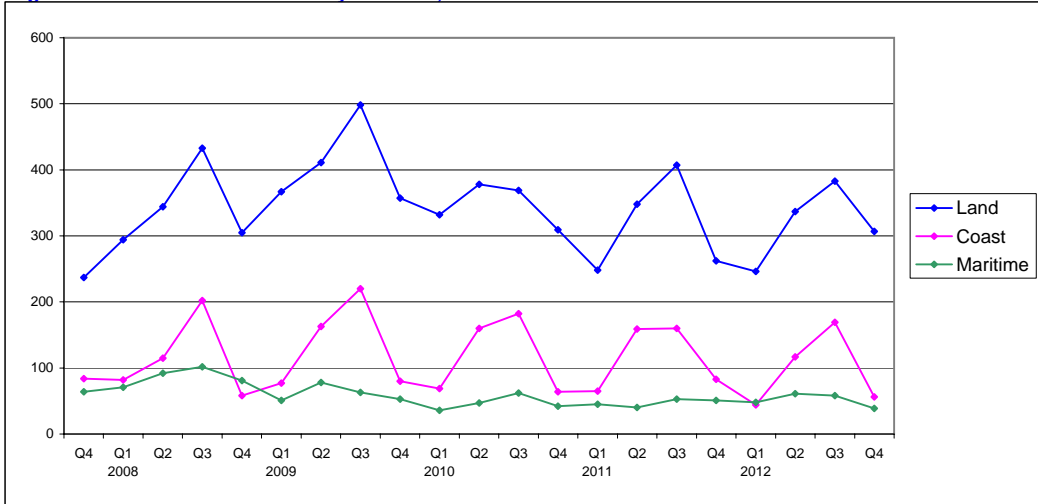


# 1. Search and Rescue Summary

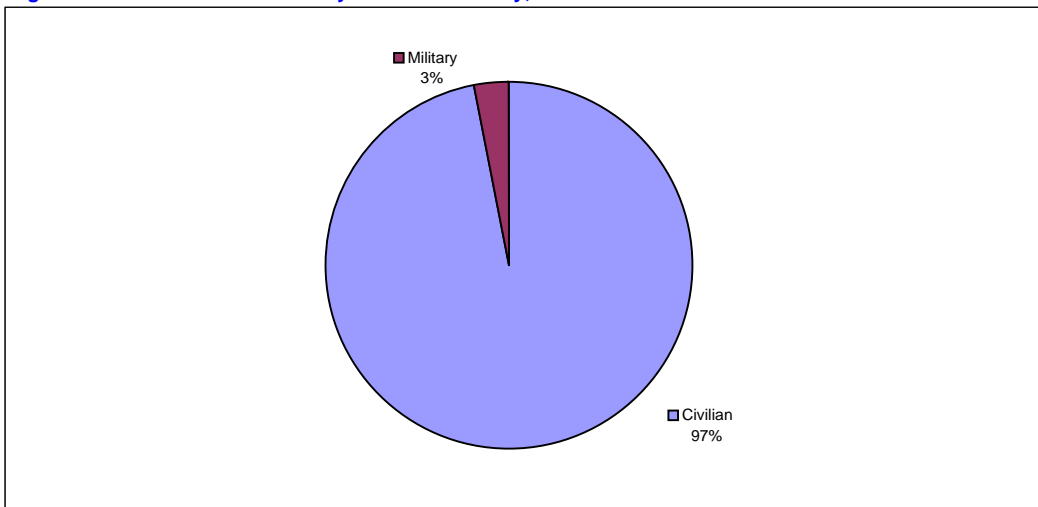
**Table 4 UK & Overseas Callouts by Location and Category, 2012**

|              | Aero      | Ship       | Leisure<br>Craft | Rig       | Beacon   | Flares   | Person       | Other    | Total        |
|--------------|-----------|------------|------------------|-----------|----------|----------|--------------|----------|--------------|
| Land         | 33        | 0          | 3                | 0         | 3        | 5        | 1,225        | 4        | <b>1,273</b> |
| Coast        | 4         | 26         | 64               | 0         | 0        | 0        | 292          | 0        | <b>386</b>   |
| Maritime     | 9         | 122        | 28               | 37        | 2        | 1        | 6            | 1        | <b>206</b>   |
| <b>Total</b> | <b>46</b> | <b>148</b> | <b>95</b>        | <b>37</b> | <b>5</b> | <b>6</b> | <b>1,523</b> | <b>5</b> | <b>1,865</b> |

**Figure 3 UK & Overseas Callouts by Location, 2007 Q4 to 2012 Q4**

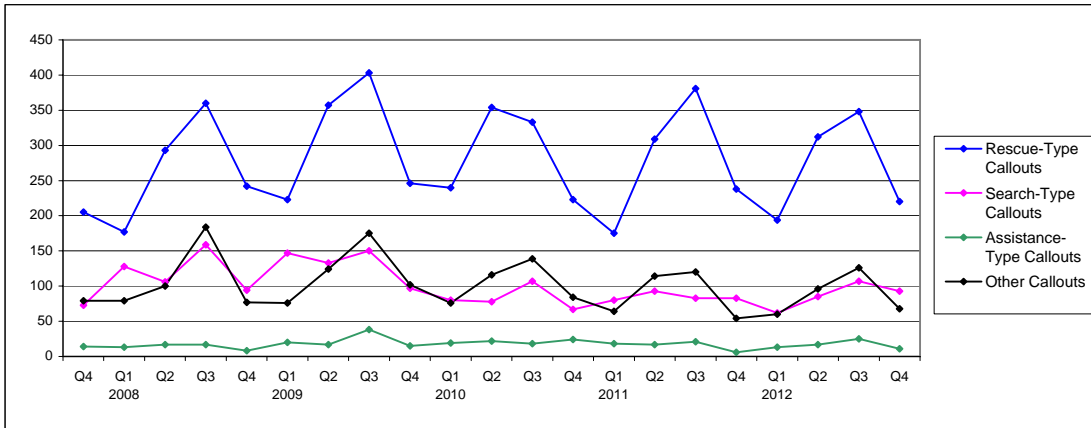


**Figure 4 UK & Overseas Callouts by Civilian or Military, 2012**



# 1. Search and Rescue Summary

Figure 5 UK Callouts by Callout Grouping<sup>1</sup>, 2007 Q4 to 2012 Q4



1. For definitions of callout groupings see SAR Definitions on page 55.

Figure 6 UK Callouts by Requesting Organisation, 2012

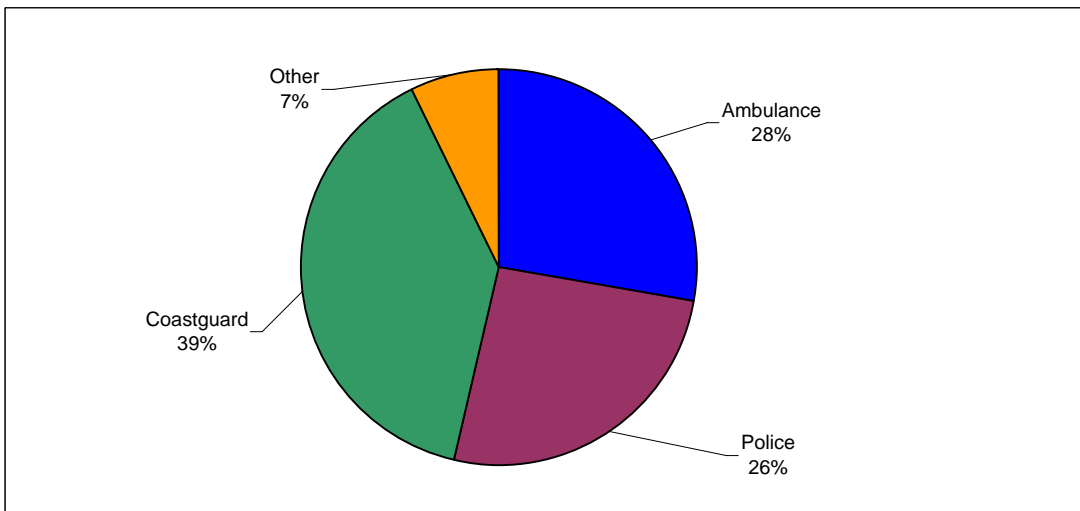
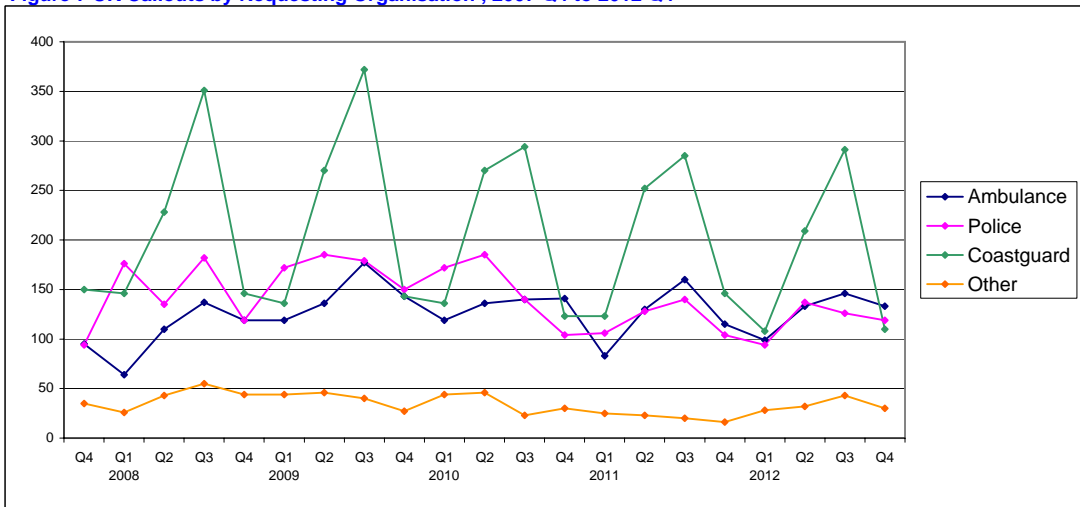


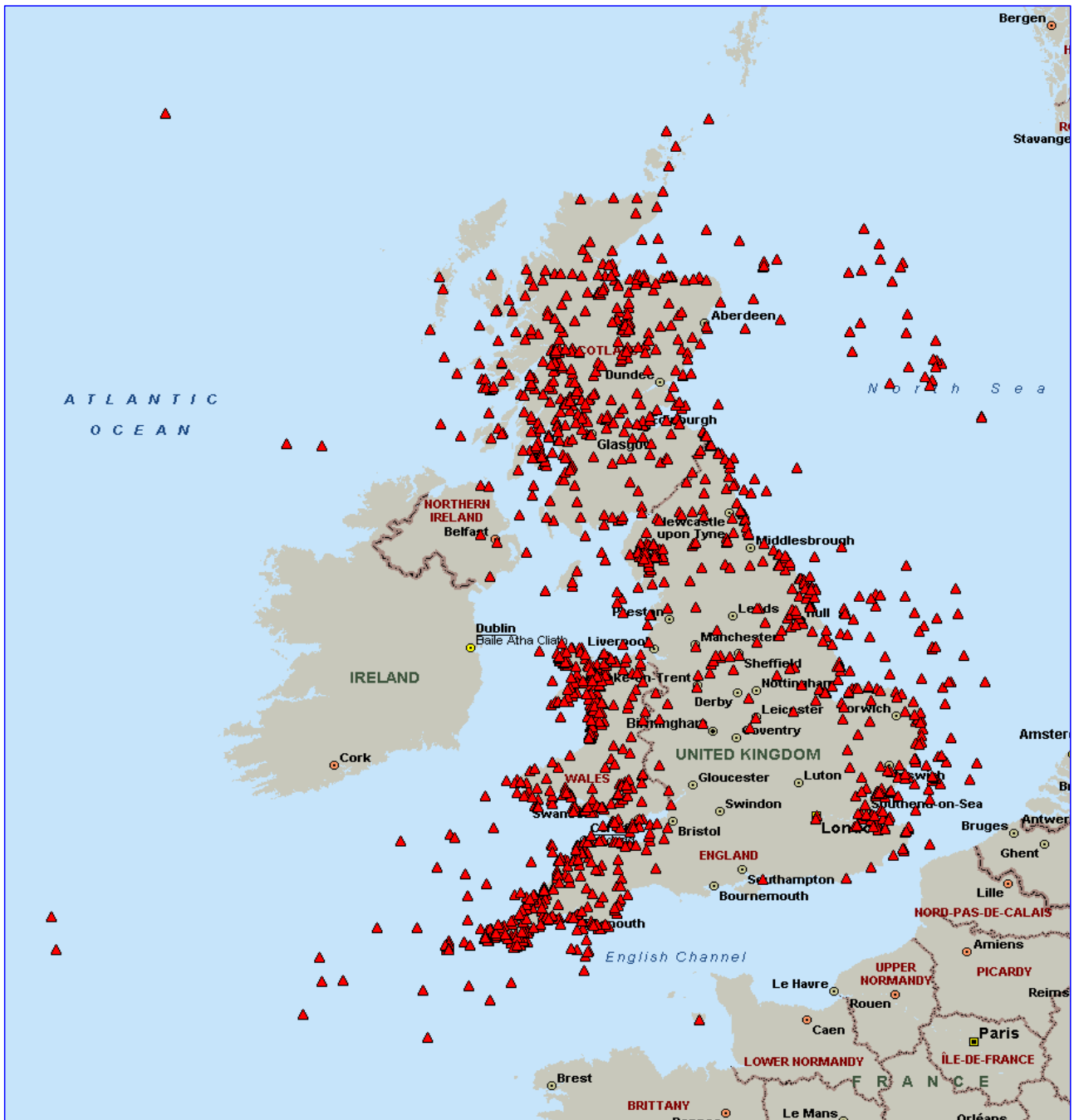
Figure 7 UK Callouts by Requesting Organisation<sup>2</sup>, 2007 Q4 to 2012 Q4



2. The requesting organisation is determined using an automated lookup function which searches for key text within the organisations' name. Within the 'Other' category, there may be a limited number of callouts by either Ambulance, Police or Coastguard due to the automated algorithm used.

# 1. Search and Rescue Summary

Map 1 UK Callouts, 2012



# 1. Search and Rescue Summary

**Table 5 UK Callouts by Region<sup>3</sup>, 2003 to 2012**

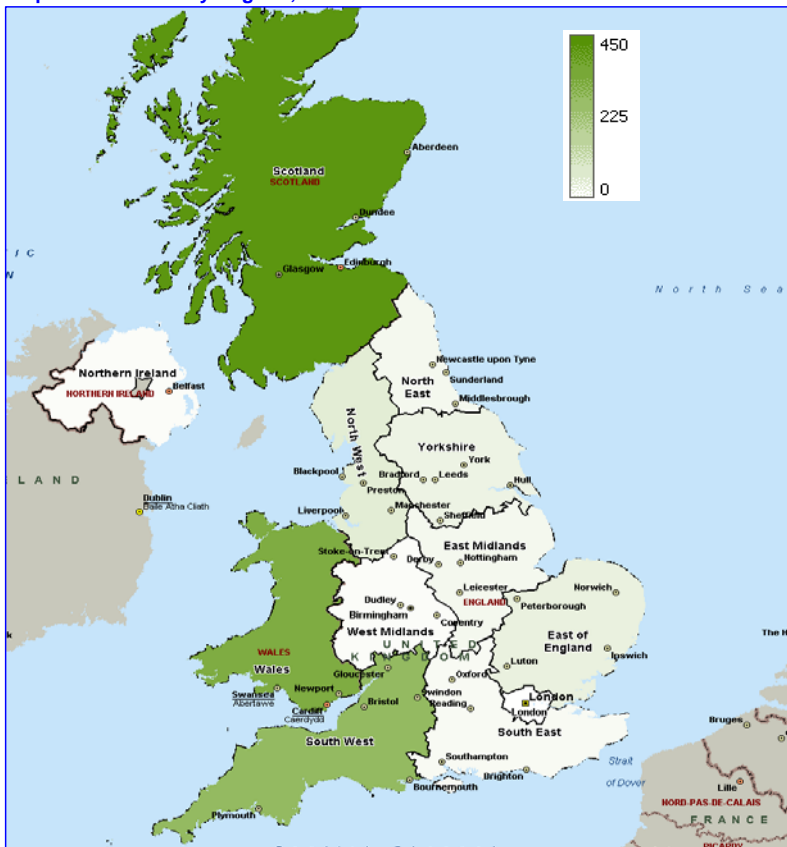
|      | UK total | North East | North West | Yorkshire & Humber | East Midlands | West Midlands | East of England | London | South East | South West | Wales | Scotland | Northern Ireland | At Sea |
|------|----------|------------|------------|--------------------|---------------|---------------|-----------------|--------|------------|------------|-------|----------|------------------|--------|
| 2003 | 1 714    | 54         | 82         | 61                 | 25            | 9             | 76              | 5      | 30         | 182        | 243   | 397      | 11               | 539    |
| 2004 | 1 638    | 60         | 96         | 35                 | 22            | 8             | 62              | 10     | 29         | 196        | 207   | 371      | 11               | 531    |
| 2005 | 1 702    | 48         | 96         | 62                 | 20            | 8             | 57              | 7      | 13         | 234        | 221   | 383      | 15               | 538    |
| 2006 | 1 875    | 50         | 109        | 48                 | 34            | 6             | 78              | 15     | 19         | 259        | 253   | 433      | 8                | 563    |
| 2007 | 1 973    | 49         | 84         | 103                | 46            | 21            | 57              | 11     | 25         | 227        | 239   | 475      | 9                | 627    |
| 2008 | 2 083    | 67         | 108        | 116                | 43            | 6             | 64              | 7      | 27         | 242        | 237   | 571      | 6                | 589    |
| 2009 | 2 337    | 67         | 134        | 103                | 37            | 14            | 58              | 5      | 30         | 360        | 357   | 593      | 13               | 566    |
| 2010 | 1 983    | 55         | 130        | 80                 | 30            | 2             | 57              | 11     | 18         | 312        | 299   | 484      | 18               | 487    |
| 2011 | 1 856    | 57         | 77         | 81                 | 18            | 4             | 73              | 5      | 31         | 244        | 304   | 439      | 7                | 516    |
| 2012 | 1 837    | 31         | 77         | 49                 | 27            | 8             | 58              | 3      | 19         | 281        | 339   | 430      | 8                | 507    |

**Table 6 UK Persons Moved by Region<sup>3</sup>, 2003 to 2012**

|      | UK total | North East | North West | Yorkshire & Humber | East Midlands | West Midlands | East of England | London | South East | South West | Wales | Scotland | Northern Ireland | At Sea |
|------|----------|------------|------------|--------------------|---------------|---------------|-----------------|--------|------------|------------|-------|----------|------------------|--------|
| 2003 | 1 273    | 29         | 72         | 35                 | 12            | 3             | 48              | 2      | 9          | 163        | 223   | 314      | 6                | 357    |
| 2004 | 1 412    | 39         | 124        | 34                 | 15            | 3             | 24              | 9      | 15         | 179        | 180   | 318      | 8                | 464    |
| 2005 | 1 384    | 39         | 128        | 61                 | 10            | 6             | 36              | 6      | 6          | 183        | 193   | 366      | 12               | 338    |
| 2006 | 1 463    | 46         | 63         | 33                 | 25            | 3             | 47              | 11     | 14         | 204        | 204   | 404      | 3                | 406    |
| 2007 | 1 767    | 41         | 81         | 155                | 15            | 97            | 24              | 11     | 9          | 283        | 205   | 348      | 6                | 492    |
| 2008 | 1 607    | 67         | 102        | 81                 | 14            | 3             | 28              | 7      | 5          | 214        | 192   | 457      | 4                | 433    |
| 2009 | 1 810    | 48         | 142        | 54                 | 13            | 7             | 22              | 2      | 21         | 351        | 305   | 452      | 11               | 382    |
| 2010 | 1 605    | 44         | 111        | 60                 | 10            | 2             | 28              | 7      | 20         | 244        | 287   | 415      | 13               | 364    |
| 2011 | 1 501    | 40         | 48         | 75                 | 6             | 2             | 38              | 3      | 19         | 190        | 279   | 368      | 2                | 431    |
| 2012 | 1 522    | 22         | 53         | 38                 | 12            | 4             | 23              | 3      | 8          | 223        | 325   | 344      | 12               | 455    |

3. The statistical regions of the United Kingdom are the Government Office Regions for England, Wales, Scotland and Northern Ireland. Callouts are allocated to regions using coordinates provided by the Search and Rescue Units. The regions on this table are calculated using Microsoft MapPoint 2004 software. The At Sea figures are dependent on the algorithm used in MapPoint to define the coastline. Further information on the UK Government Office Regions can be found at :- <http://www.ons.gov.uk/ons/guide-method/geography/ons-geography/index.html>

**Map 2 UK Callouts by Region<sup>4</sup>, 2012**



4. This chart shows callout numbers by Government Office Region, with the darker green corresponding to a higher number of callouts within the region, as shown by the scale above.

## 2. Search and Rescue Helicopters

This section focuses on SAR helicopter callouts, excluding Mountain Rescue Teams.

**Table 7** presents the number of callouts by unit between 2003 and 2012. The unit with the highest number of callouts during 2012 was RAF Valley (300), closely followed by HMS Gannet with 298. This is the first time since 2006 that any unit other than HMS Gannet has had the highest number of callouts. It is also the first time since 1985 that RAF Valley has had the highest number of callouts in a year, although it has been one of the top three units with the highest number of callouts for each of the past four years.

**Table 8** presents the number of persons moved by unit between 2003 and 2012. HMS Gannet had the highest number of persons moved during 2012 with 285, closely followed by RAF Valley with 284. For the past three years HMS Gannet and RAF Valley have been the two units with the highest number of persons moved.

**Figure 8** presents the callouts and persons moved in 2012 by unit. The callout numbers and persons moved by region shown in Tables 5 and 6 are also reflected in this data. Coverage in Scotland is generally (although not exclusively) provided by HMS Gannet and RAF Lossiemouth, and as such the high number of callouts in Scotland is reflected in the high number of total callouts of these two units. Coverage throughout north Wales is generally provided by RAF Valley. Coverage in the South West (the third busiest region) is generally provided by RNAS Culdrose and RAF Chivenor.

**Table 9** presents callout numbers by assistance type between 2003 and 2012. Definitions of the assistance types are shown on page 55. The assistance type with the largest number of callouts during 2012 was Medrescue, representing around 45% of all helicopter callouts.

The assistance type with the largest percentage increase between 2011 and 2012 was Recovery, with 50% more callouts in 2012 than in 2011 (although the actual number of callouts was relatively low in both years).

**Table 10** presents the number of callouts for 2012 by unit and assistance type. It is notable that HMS Gannet and RNAS Culdrose both have a relatively high proportion of Medtransfers compared with the national average (19% and 16% respectively, compared with an overall average of 9%). HMS Gannet often provide Medtransfers from the remoter regions of Scotland, including offshore islands. RNAS Culdrose often provide Medtransfers between the Isles of Scilly and the mainland. For callouts classified as Search, RAF Wattisham and RAF Lossiemouth have a higher proportion of callouts than the other units (both at 19%, compared with an overall average of 10%).

**Table 11** shows the number of persons moved by assistance type between 2003 and 2012. In 2012 56% of all persons moved were Medrescued, a similar proportion to recent years.

**Table 12** shows persons moved during 2012 by unit and assistance type. The largest cohort of persons moved during 2012 was Medrescues performed by RAF Valley, with 161 such persons moved during 2012. This represented 57% of all persons moved by RAF Valley during the year.

## 2. Search and Rescue Helicopters

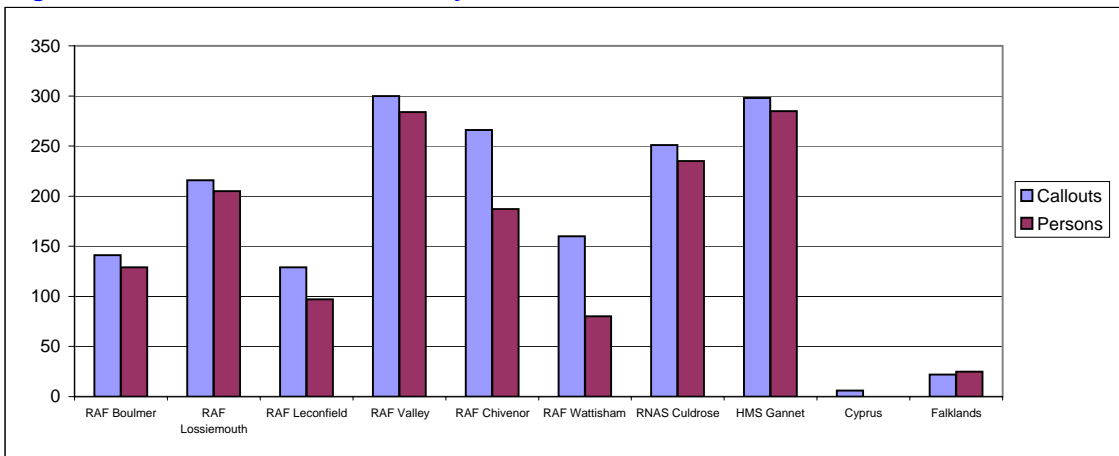
**Table 7 UK & Overseas Callouts by Unit, 2003 to 2012**

|      | RAF Boulmer | RAF Lossiemouth | RAF Leconfield | RAF Valley | RAF Chivenor | RAF Wattisham | RAF UK Total | RNAS Culdrose | HMS Gannet | RN Total | UK Other | UK Total | Cyprus | Falklands | Overseas Total |
|------|-------------|-----------------|----------------|------------|--------------|---------------|--------------|---------------|------------|----------|----------|----------|--------|-----------|----------------|
| 2003 | 194         | 201             | 150            | 238        | 221          | 164           | 1,168        | 181           | 243        | 424      | 5        | 1,597    | 54     | 37        | 91             |
| 2004 | 166         | 190             | 136            | 230        | 216          | 137           | 1,075        | 203           | 250        | 453      | 4        | 1,532    | 46     | 21        | 67             |
| 2005 | 144         | 200             | 135            | 218        | 281          | 131           | 1,109        | 211           | 267        | 478      | 5        | 1,592    | 39     | 24        | 63             |
| 2006 | 206         | 217             | 147            | 225        | 293          | 163           | 1,251        | 228           | 269        | 497      | 8        | 1,756    | 35     | 38        | 73             |
| 2007 | 170         | 188             | 222            | 234        | 256          | 183           | 1,253        | 231           | 359        | 590      | 7        | 1,850    | 53     | 39        | 92             |
| 2008 | 211         | 275             | 232            | 222        | 262          | 174           | 1,376        | 204           | 382        | 586      | 1        | 1,963    | 30     | 66        | 96             |
| 2009 | 214         | 236             | 204            | 322        | 340          | 162           | 1,478        | 311           | 447        | 758      | 1        | 2,237    | 36     | 45        | 81             |
| 2010 | 193         | 175             | 174            | 268        | 339          | 133           | 1,282        | 260           | 379        | 639      | 0        | 1,921    | 29     | 38        | 67             |
| 2011 | 181         | 207             | 168            | 276        | 267          | 157           | 1,256        | 244           | 298        | 542      | 1        | 1,799    | 24     | 41        | 65             |
| 2012 | 141         | 216             | 129            | 300        | 266          | 160           | 1,212        | 251           | 298        | 549      | 0        | 1,761    | 6      | 22        | 28             |

**Table 8 UK & Overseas Persons Moved by Unit, 2003 to 2012**

|      | RAF Boulmer | RAF Lossiemouth | RAF Leconfield | RAF Valley | RAF Chivenor | RAF Wattisham | RAF UK Total | RNAS Culdrose | HMS Gannet | RN Total | UK Other | UK Total | Cyprus | Falklands | Overseas Total |
|------|-------------|-----------------|----------------|------------|--------------|---------------|--------------|---------------|------------|----------|----------|----------|--------|-----------|----------------|
| 2003 | 134         | 184             | 95             | 206        | 199          | 100           | 918          | 133           | 187        | 320      | 4        | 1,242    | 13     | 43        | 56             |
| 2004 | 134         | 199             | 114            | 196        | 248          | 75            | 966          | 205           | 211        | 416      | 12       | 1,394    | 9      | 26        | 35             |
| 2005 | 136         | 181             | 94             | 195        | 216          | 83            | 905          | 154           | 226        | 380      | 2        | 1,287    | 17     | 30        | 47             |
| 2006 | 132         | 180             | 125            | 202        | 213          | 110           | 962          | 176           | 303        | 479      | 6        | 1,447    | 5      | 70        | 75             |
| 2007 | 136         | 160             | 315            | 236        | 224          | 122           | 1,193        | 220           | 286        | 506      | 27       | 1,726    | 11     | 39        | 50             |
| 2008 | 185         | 199             | 163            | 217        | 211          | 87            | 1,062        | 169           | 347        | 516      | 0        | 1,578    | 5      | 151       | 156            |
| 2009 | 149         | 171             | 132            | 296        | 304          | 82            | 1,134        | 278           | 378        | 656      | 1        | 1,791    | 9      | 54        | 63             |
| 2010 | 169         | 156             | 120            | 263        | 256          | 83            | 1,047        | 215           | 324        | 539      | 0        | 1,586    | 5      | 37        | 42             |
| 2011 | 121         | 239             | 125            | 246        | 203          | 96            | 1,030        | 219           | 240        | 459      | 0        | 1,489    | 15     | 44        | 59             |
| 2012 | 129         | 205             | 97             | 284        | 187          | 80            | 982          | 235           | 285        | 520      | 0        | 1,502    | 0      | 25        | 25             |

**Figure 8 Callouts and Persons Moved by Unit, 2012**



## 2. Search and Rescue Helicopters

**Table 9 UK & Overseas Callouts by Assistance Type, 2003 to 2012**

|                               | 2003         | 2004         | 2005         | 2006         | 2007         | 2008         | 2009         | 2010         | 2011         | 2012         |
|-------------------------------|--------------|--------------|--------------|--------------|--------------|--------------|--------------|--------------|--------------|--------------|
| Rescue                        | 114          | 118          | 115          | 100          | 106          | 99           | 97           | 105          | 87           | 81           |
| Search-Rescue <sup>5</sup>    | 0            | 0            | 0            | 0            | 30           | 33           | 75           | 40           | 30           | 39           |
| Medrescue                     | 683          | 602          | 675          | 751          | 703          | 744          | 914          | 839          | 843          | 805          |
| Search-Medrescue <sup>5</sup> | 0            | 0            | 0            | 0            | 38           | 55           | 59           | 61           | 53           | 46           |
| Medtransfer                   | 191          | 195          | 157          | 191          | 209          | 229          | 224          | 210          | 182          | 169          |
| Recovery                      | 24           | 26           | 30           | 33           | 15           | 29           | 19           | 13           | 14           | 21           |
| Search-Recovery <sup>5</sup>  | 0            | 0            | 0            | 0            | 2            | 8            | 16           | 7            | 7            | 8            |
| Transfer                      | 17           | 19           | 28           | 24           | 18           | 16           | 15           | 12           | 10           | 9            |
| Civil Aid                     | 32           | 31           | 22           | 23           | 41           | 26           | 17           | 20           | 10           | 5            |
| Search                        | 241          | 248          | 246          | 289          | 284          | 291          | 297          | 189          | 202          | 177          |
| Top Cover                     | 36           | 35           | 38           | 28           | 35           | 15           | 28           | 22           | 24           | 19           |
| Assist                        | 31           | 42           | 29           | 33           | 25           | 27           | 34           | 31           | 20           | 25           |
| Search-Assist <sup>5</sup>    | 0            | 0            | 0            | 0            | 37           | 53           | 49           | 19           | 27           | 36           |
| Recall                        | 173          | 180          | 183          | 222          | 212          | 277          | 280          | 243          | 224          | 221          |
| Not Required                  | 96           | 58           | 98           | 83           | 113          | 80           | 104          | 88           | 94           | 97           |
| False Alarm                   | 16           | 15           | 10           | 9            | 25           | 31           | 36           | 29           | 10           | 9            |
| Hoax                          | 6            | 8            | 6            | 10           | 12           | 15           | 11           | 15           | 7            | 3            |
| Precaution                    | 4            | 10           | 4            | 8            | 5            | 1            | 2            | 9            | 6            | 5            |
| Aborted                       | 23           | 12           | 14           | 25           | 27           | 23           | 34           | 33           | 9            | 9            |
| Search-Aborted <sup>5</sup>   | 0            | 0            | 0            | 0            | 5            | 8            | 7            | 3            | 5            | 5            |
| <b>Total Callouts</b>         | <b>1,687</b> | <b>1,599</b> | <b>1,655</b> | <b>1,829</b> | <b>1,942</b> | <b>2,060</b> | <b>2,318</b> | <b>1,988</b> | <b>1,864</b> | <b>1,789</b> |

5. There was a change in callout classification in 2007. Prior to 2007, 'Search-Rescue' was included in 'Rescue', 'Search-Medrescue' was included in 'Medrescue', 'Search-Recovery' was included in 'Recovery', 'Search-Assist' was included in 'Assist' and 'Search-Aborted' was included in 'Aborted'

**Table 10 UK & Overseas Callouts by Unit and Assistance Type, 2012**

| 2012                  | RAF        |             |            |            |            |            |              | RN           |            |            | UK Other | UK Total     | Overseas |           | Overseas Total |
|-----------------------|------------|-------------|------------|------------|------------|------------|--------------|--------------|------------|------------|----------|--------------|----------|-----------|----------------|
|                       | Boulmer    | Lossiemouth | Leconfield | Valley     | Chivenor   | Wattisham  | UK Total     | RNAS Cudrose | HMS Gannet | RN Total   |          |              | Cyprus   | Falklands |                |
| Rescue                | 7          | 11          | 4          | 16         | 14         | 4          | 56           | 15           | 10         | 25         | 0        | 81           | 0        | 0         | 0              |
| Search-Rescue         | 0          | 9           | 3          | 9          | 2          | 2          | 25           | 2            | 12         | 14         | 0        | 39           | 0        | 0         | 0              |
| Medrescue             | 57         | 99          | 62         | 152        | 129        | 48         | 547          | 128          | 116        | 244        | 0        | 791          | 0        | 14        | 14             |
| Search-Medrescue      | 7          | 7           | 1          | 8          | 6          | 2          | 31           | 9            | 6          | 15         | 0        | 46           | 0        | 0         | 0              |
| Medtransfer           | 3          | 4           | 7          | 19         | 18         | 14         | 65           | 41           | 58         | 99         | 0        | 164          | 0        | 5         | 5              |
| Recovery              | 4          | 4           | 2          | 4          | 3          | 0          | 17           | 1            | 3          | 4          | 0        | 21           | 0        | 0         | 0              |
| Search-Recovery       | 1          | 3           | 0          | 1          | 0          | 0          | 5            | 0            | 3          | 3          | 0        | 8            | 0        | 0         | 0              |
| Transfer              | 1          | 0           | 0          | 0          | 0          | 0          | 1            | 3            | 4          | 7          | 0        | 8            | 0        | 1         | 1              |
| Civil Aid             | 0          | 0           | 0          | 0          | 1          | 0          | 1            | 0            | 1          | 1          | 0        | 2            | 2        | 1         | 3              |
| Search                | 14         | 40          | 15         | 16         | 24         | 31         | 140          | 11           | 22         | 33         | 0        | 173          | 3        | 1         | 4              |
| Top Cover             | 2          | 1           | 2          | 2          | 2          | 4          | 13           | 2            | 4          | 6          | 0        | 19           | 0        | 0         | 0              |
| Assist                | 3          | 4           | 3          | 4          | 2          | 3          | 19           | 3            | 3          | 6          | 0        | 25           | 0        | 0         | 0              |
| Search-Assist         | 5          | 11          | 0          | 5          | 3          | 3          | 27           | 3            | 6          | 9          | 0        | 36           | 0        | 0         | 0              |
| Recalled              | 26         | 12          | 19         | 33         | 41         | 35         | 166          | 17           | 37         | 54         | 0        | 220          | 1        | 0         | 1              |
| Not Required          | 9          | 6           | 7          | 23         | 17         | 11         | 73           | 16           | 8          | 24         | 0        | 97           | 0        | 0         | 0              |
| False Alarm           | 1          | 1           | 1          | 4          | 2          | 0          | 9            | 0            | 0          | 0          | 0        | 9            | 0        | 0         | 0              |
| Hoax                  | 0          | 0           | 1          | 0          | 1          | 0          | 2            | 0            | 1          | 1          | 0        | 3            | 0        | 0         | 0              |
| Precaution            | 0          | 0           | 2          | 1          | 0          | 2          | 5            | 0            | 0          | 0          | 0        | 5            | 0        | 0         | 0              |
| Aborted               | 1          | 2           | 0          | 2          | 1          | 1          | 7            | 0            | 2          | 2          | 0        | 9            | 0        | 0         | 0              |
| Search-Aborted        | 0          | 2           | 0          | 1          | 0          | 0          | 3            | 0            | 2          | 2          | 0        | 5            | 0        | 0         | 0              |
| <b>Total Callouts</b> | <b>141</b> | <b>216</b>  | <b>129</b> | <b>300</b> | <b>266</b> | <b>160</b> | <b>1,212</b> | <b>251</b>   | <b>298</b> | <b>549</b> | <b>0</b> | <b>1,761</b> | <b>6</b> | <b>22</b> | <b>28</b>      |

## 2. Search and Rescue Helicopters

**Table 11 UK & Overseas Persons Moved by Assistance Type, 2003 to 2012**

|                               | 2003         | 2004         | 2005         | 2006         | 2007         | 2008         | 2009         | 2010         | 2011         | 2012         |
|-------------------------------|--------------|--------------|--------------|--------------|--------------|--------------|--------------|--------------|--------------|--------------|
| Rescue                        | 261          | 490          | 322          | 407          | 575          | 383          | 289          | 290          | 301          | 287          |
| Search-Rescue <sup>5</sup>    | 0            | 0            | 0            | 0            | 56           | 70           | 155          | 82           | 55           | 100          |
| Medrescue                     | 801          | 683          | 791          | 852          | 839          | 821          | 1026         | 917          | 910          | 857          |
| Search-Medrescue <sup>5</sup> | 0            | 0            | 0            | 0            | 56           | 65           | 70           | 68           | 59           | 48           |
| Medtransfer                   | 191          | 204          | 159          | 192          | 212          | 243          | 238          | 227          | 190          | 185          |
| Recovery                      | 24           | 30           | 30           | 39           | 16           | 28           | 22           | 15           | 14           | 27           |
| Search-Recovery <sup>5</sup>  | 0            | 0            | 0            | 0            | 2            | 9            | 20           | 8            | 7            | 10           |
| Transfer                      | 21           | 22           | 32           | 32           | 20           | 115          | 34           | 21           | 12           | 13           |
| <b>Total Persons Moved</b>    | <b>1,298</b> | <b>1,429</b> | <b>1,334</b> | <b>1,522</b> | <b>1,776</b> | <b>1,734</b> | <b>1,854</b> | <b>1,628</b> | <b>1,548</b> | <b>1,527</b> |

5. There was a change in callout classification in 2007. Prior to 2007, 'Search-Rescue' was included in 'Rescue', 'Search-Medrescue' was included in 'Medrescue', 'Search-Recovery' was included in 'Recovery', 'Search-Assist' was included in 'Assist' and 'Search-Aborted' was included in 'Aborted'

**Table 12 UK & Overseas Persons Moved by Unit and Assistance Type, 2012**

| 2012                       | RAF        |             |            |            |            |           |            | RN         |            |            | UK Other | UK Total     | Overseas |           |           |
|----------------------------|------------|-------------|------------|------------|------------|-----------|------------|------------|------------|------------|----------|--------------|----------|-----------|-----------|
|                            | Boulmer    | Lossiemouth | Leconfield | Valley     | Chivenor   | Wattisham | Total      | Culdrose   | Gannet     | Total      |          |              | Cyprus   | Falklands | Total     |
| Rescue                     | 44         | 69          | 18         | 66         | 22         | 8         | 227        | 30         | 30         | 60         | 0        | 287          | 0        | 0         | 0         |
| Search-Rescue              | 0          | 14          | 5          | 20         | 4          | 5         | 48         | 2          | 50         | 52         | 0        | 100          | 0        | 0         | 0         |
| Medrescue                  | 64         | 101         | 65         | 161        | 132        | 53        | 576        | 141        | 121        | 262        | 0        | 838          | 0        | 19        | 19        |
| Search-Medrescue           | 8          | 8           | 1          | 8          | 6          | 2         | 33         | 9          | 6          | 15         | 0        | 48           | 0        | 0         | 0         |
| Medtransfer                | 5          | 3           | 6          | 21         | 20         | 12        | 67         | 49         | 64         | 113        | 0        | 180          | 0        | 5         | 5         |
| Recovery                   | 4          | 7           | 2          | 7          | 3          | 0         | 23         | 1          | 3          | 4          | 0        | 27           | 0        | 0         | 0         |
| Search-Recovery            | 2          | 3           | 0          | 1          | 0          | 0         | 6          | 0          | 4          | 4          | 0        | 10           | 0        | 0         | 0         |
| Transfer                   | 2          | 0           | 0          | 0          | 0          | 0         | 2          | 3          | 7          | 10         | 0        | 12           | 0        | 1         | 1         |
| <b>Total Persons Moved</b> | <b>129</b> | <b>205</b>  | <b>97</b>  | <b>284</b> | <b>187</b> | <b>80</b> | <b>982</b> | <b>235</b> | <b>285</b> | <b>520</b> | <b>0</b> | <b>1,502</b> | <b>0</b> | <b>25</b> | <b>25</b> |



### 3. RAF Boulmer

RAF Boulmer is located in Northumberland. The SAR unit forms part of the "A" Flight 202 Squadron. Further information is available at:

<http://www.raf.mod.uk/rafboulmer/>

As shown in [Map 3](#), RAF Boulmer typically respond to incidents in the north of England (particularly the north east coast, and the Lake District). They also regularly attend maritime incidents in the North Sea, and provide coverage across the south of Scotland.

[Table 13](#) presents the number of callouts, persons moved, average flying hours and average distance travelled from base for RAF Boulmer between 2003 and 2012. During 2012 Boulmer attended the lowest number of callouts of any year over the past decade, although the average distance travelled from base was the highest during the same period. The average flying hours during 2012 were also the highest since 2006.

[Table 14](#) presents the number of callouts, persons moved, average flying hours and average distance travelled from base for RAF Boulmer for each month of 2012.

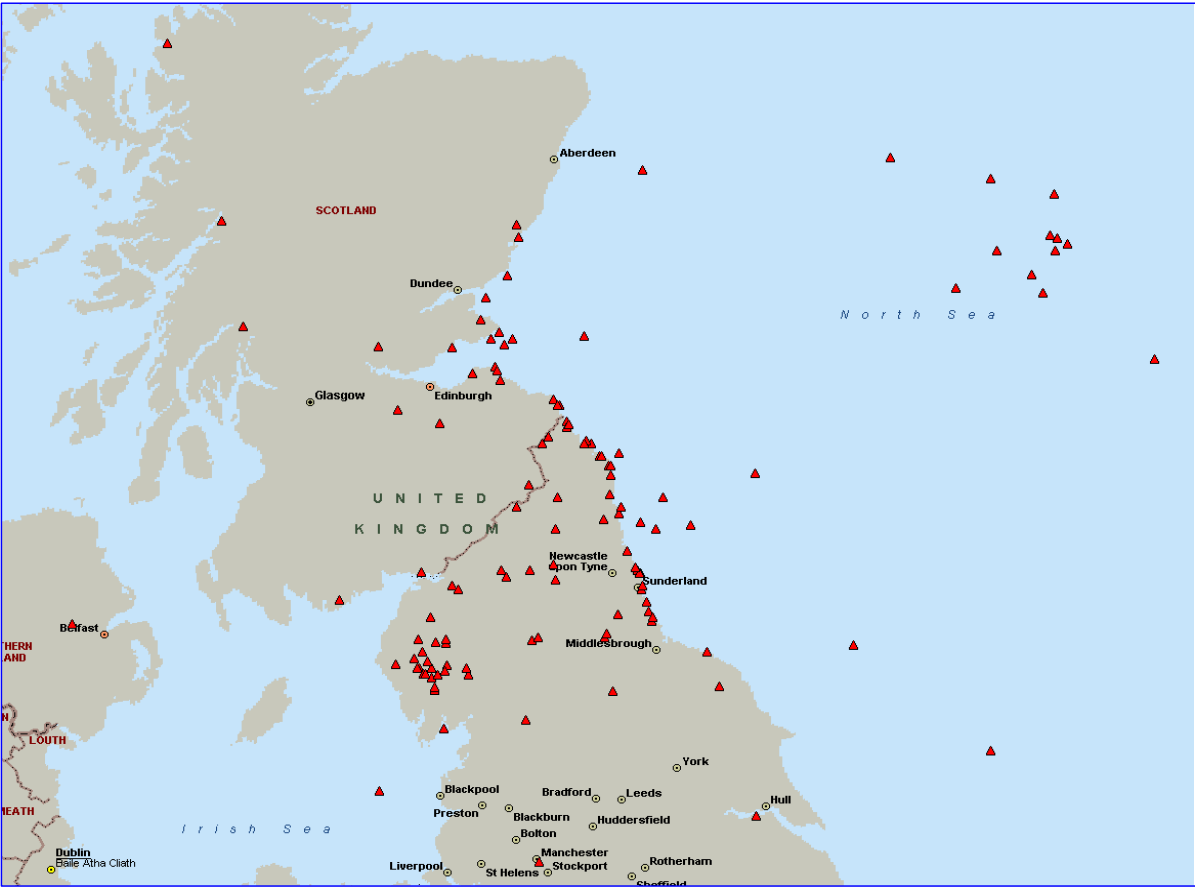
[Figure 11](#), [Figure 12](#) and [Figure 13](#) show the number of callouts from RAF Boulmer on an annual, quarterly and monthly basis respectively. In common with most SAR units, RAF Boulmer tends to see the peak of its activity during the warmer summer months.

[Figure 14](#) and [Figure 15](#) show the historic time series for callouts based on the groupings shown on page 55 of this report.

[Table 15](#) shows the persons moved by RAF Boulmer by assistance type between 2003 and 2012. There was a large increase in the number of persons Rescued between 2011 and 2012, increasing from 9 to 44 (an increase of nearly five times). However, the number of Rescues in 2011 was very low compared with the historical trend. Conversely, the number of people Medrescued fell from 102 to 64.

### 3. RAF Boulmer

Map 3 RAF Boulmer Callouts, 2012



### 3. RAF Boulmer

**Table 13 Callouts, Persons Moved, Flying Hours and Distance from base, 2003 to 2012**

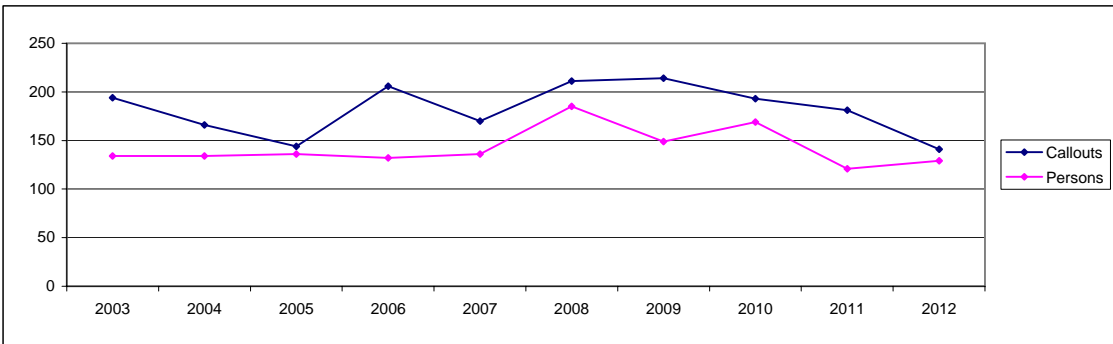
|      | Callouts | Persons | Average Flying Hours <sup>6</sup> | Average Distance from base |
|------|----------|---------|-----------------------------------|----------------------------|
| 2003 | 194      | 134     | 1.45                              | 52                         |
| 2004 | 166      | 134     | 1.39                              | 52                         |
| 2005 | 144      | 136     | 1.55                              | 56                         |
| 2006 | 206      | 132     | 1.57                              | 56                         |
| 2007 | 170      | 136     | 1.46                              | 57                         |
| 2008 | 211      | 185     | 1.45                              | 58                         |
| 2009 | 214      | 149     | 1.44                              | 52                         |
| 2010 | 193      | 169     | 1.49                              | 54                         |
| 2011 | 181      | 121     | 1.39                              | 51                         |
| 2012 | 141      | 129     | 1.55                              | 64                         |

6. Times are expressed in hours and minutes

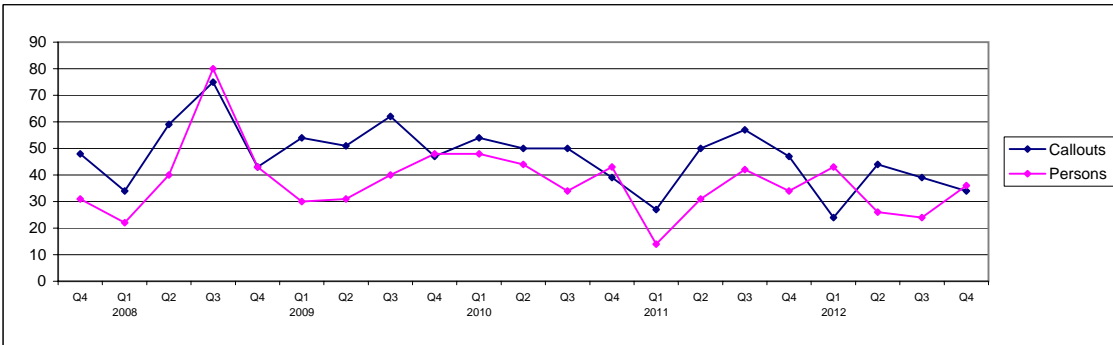
**Table 14 Callouts, Persons Moved, Flying Hours and Distance from Base, 2012**

|              | Callouts   | Persons    | Average Flying Hours <sup>6</sup> | Average Distance from base |
|--------------|------------|------------|-----------------------------------|----------------------------|
| January      | 6          | 4          | 2.08                              | 85                         |
| February     | 11         | 8          | 1.59                              | 50                         |
| March        | 7          | 31         | 2.04                              | 71                         |
| April        | 8          | 6          | 2.21                              | 82                         |
| May          | 15         | 10         | 1.41                              | 64                         |
| June         | 21         | 10         | 1.33                              | 60                         |
| July         | 13         | 6          | 1.28                              | 54                         |
| August       | 15         | 12         | 1.46                              | 63                         |
| September    | 11         | 6          | 2.03                              | 59                         |
| October      | 10         | 6          | 2.16                              | 55                         |
| November     | 10         | 16         | 2.12                              | 63                         |
| December     | 14         | 14         | 2.10                              | 83                         |
| <b>Total</b> | <b>141</b> | <b>129</b> | <b>1.55</b>                       | <b>64</b>                  |

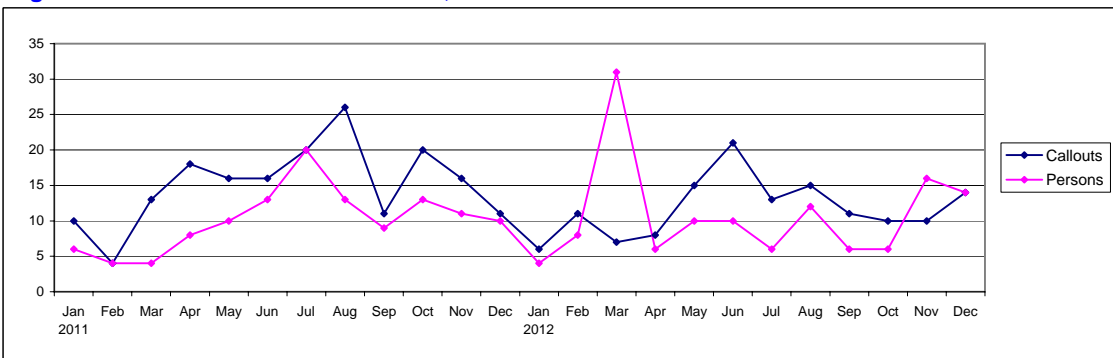
**Figure 11 Callouts and Persons Moved, 2003 to 2012**



**Figure 12 Callouts and Persons Moved, 2007 Q4 to 2012 Q4**



**Figure 13 Callouts and Persons Moved, 2011 to 2012**



### 3. RAF Boulmer

Figure 14 Callouts by Callout Grouping, 2003 to 2012

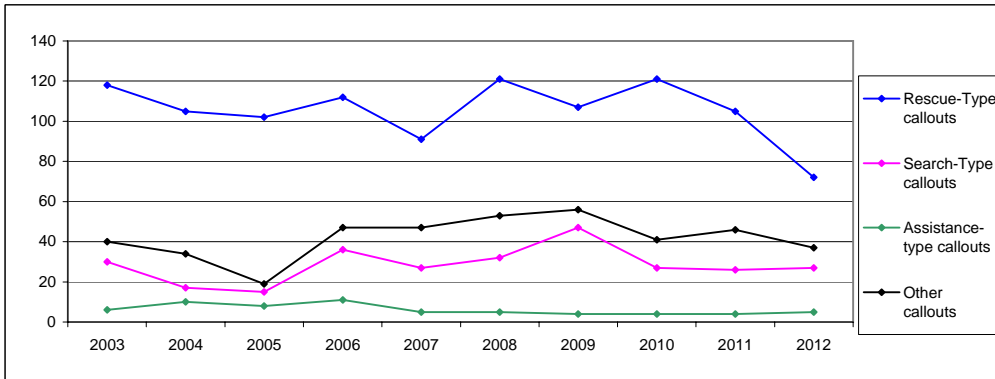


Figure 15 Callouts by Callout Grouping, 2007 Q4 to 2012 Q4

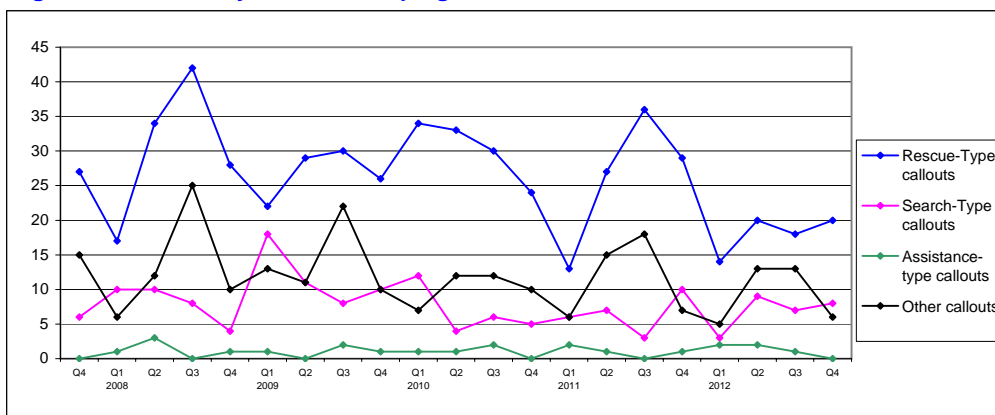


Table 15 Persons Moved by Assistance Type, 2003 to 2012

|                            | 2003       | 2004       | 2005       | 2006       | 2007       | 2008       | 2009       | 2010       | 2011       | 2012       |
|----------------------------|------------|------------|------------|------------|------------|------------|------------|------------|------------|------------|
| Rescue                     | 8          | 30         | 28         | 29         | 40         | 57         | 37         | 32         | 9          | 44         |
| Search-Rescue              | 0          | 0          | 0          | 0          | 0          | 4          | 5          | 4          | 0          | 0          |
| Medrescue                  | 108        | 87         | 93         | 92         | 86         | 109        | 95         | 112        | 102        | 64         |
| Search-Medrescue           | 0          | 0          | 0          | 0          | 3          | 2          | 2          | 7          | 6          | 8          |
| Medtransfer                | 12         | 10         | 8          | 6          | 3          | 10         | 6          | 10         | 3          | 5          |
| Recovery                   | 5          | 5          | 5          | 5          | 2          | 3          | 3          | 3          | 1          | 4          |
| Search-Recovery            | 0          | 0          | 0          | 0          | 0          | 0          | 0          | 0          | 0          | 2          |
| Transfer                   | 1          | 2          | 2          | 0          | 2          | 0          | 1          | 1          | 0          | 2          |
| <b>Total Persons Moved</b> | <b>134</b> | <b>134</b> | <b>136</b> | <b>132</b> | <b>136</b> | <b>185</b> | <b>149</b> | <b>169</b> | <b>121</b> | <b>129</b> |

## 4. RAF Lossiemouth

RAF Lossiemouth is located in the north of Scotland. The SAR unit forms part of the "D" Flight 202 Squadron. Further information is available at:

<http://www.raf.mod.uk/raflossiemouth/>

As shown in [Map 4](#), RAF Lossiemouth typically respond to incidents throughout Scotland, with the busiest areas typically being around the Cairngorms and Highland regions. They also provide maritime coverage in the North Sea.

[Table 16](#) presents the number of callouts, persons moved, average flying hours and average distance travelled from base for RAF Lossiemouth between 2003 and 2012. The number of callouts during 2012 was broadly in line with the average over the past decade (216 callouts, compared with a long term average of 211). The number of persons moved was higher than the long term average (205, compared with a long term average of 187). There were a number of incidents during 2012 which resulted in a large number of persons being moved. The two largest incidents were the evacuation of 20 people from a North Sea oil rig in March, and the rescue of 12 people from a ditching helicopter in October.

[Table 17](#) presents the number of callouts, persons moved, average flying hours and average distance from base for RAF Lossiemouth for each month of 2012. Interestingly the number of callouts in December 2012 was the third highest month this year, contrary to the usual trend of fewer callouts during the winter months. This reflects a high number of Search-type callouts, due to an unusually high number of missing walkers throughout Scotland during the month.

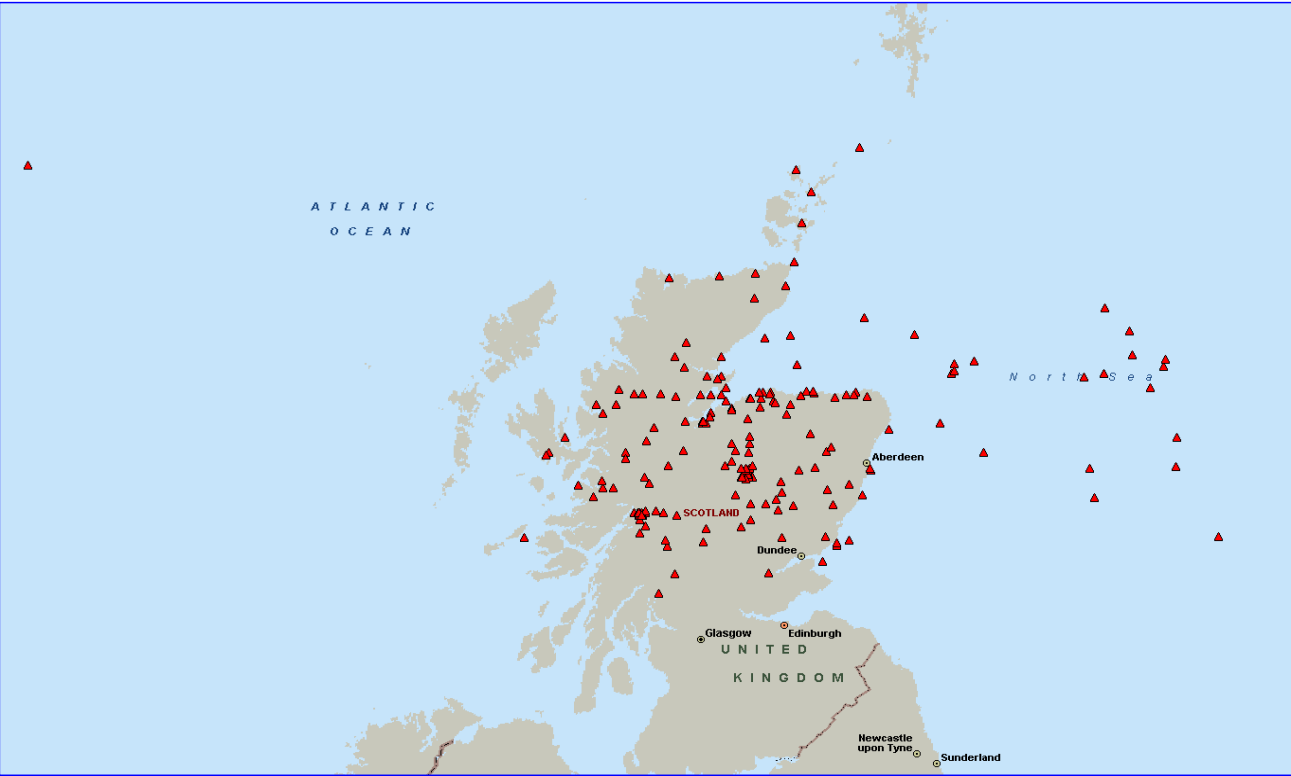
[Figure 16](#), [Figure 17](#) and [Figure 18](#) show the number of callouts from RAF Lossiemouth on an annual, quarterly and monthly basis respectively. In common with most SAR units, RAF Lossiemouth tends to see the peak of its activity during the warmer summer months. There was a particular peak in persons moved in Q1 2011, when a single callout saw 44 people rescued from a sinking ship.

[Figure 19](#) and [Figure 20](#) show the historic time series for callouts based on the groupings shown on page 55 of this report.

[Table 18](#) shows the persons moved by RAF Lossiemouth by assistance type between 2003 and 2012.

# 4. RAF Lossiemouth

Map 4 RAF Lossiemouth Callouts, 2012



## 4. RAF Lossiemouth

**Table 16 Callouts, Persons Moved, Flying Hours and Distance from base, 2003 to 2012**

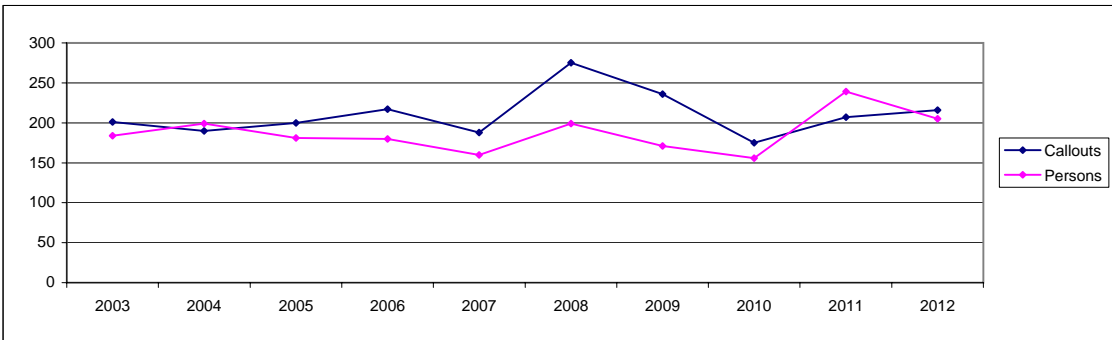
|      | Callouts | Persons | Average Flying Hours <sup>6</sup> | Average Distance from base |
|------|----------|---------|-----------------------------------|----------------------------|
| 2003 | 201      | 184     | 2.19                              | 62                         |
| 2004 | 190      | 199     | 2.09                              | 64                         |
| 2005 | 200      | 181     | 2.18                              | 67                         |
| 2006 | 217      | 180     | 2.23                              | 64                         |
| 2007 | 188      | 160     | 2.14                              | 63                         |
| 2008 | 275      | 199     | 2.13                              | 66                         |
| 2009 | 236      | 171     | 2.21                              | 60                         |
| 2010 | 175      | 156     | 2.06                              | 57                         |
| 2011 | 207      | 239     | 2.09                              | 60                         |
| 2012 | 216      | 205     | 2.23                              | 61                         |

6. Times are expressed in hours and minutes

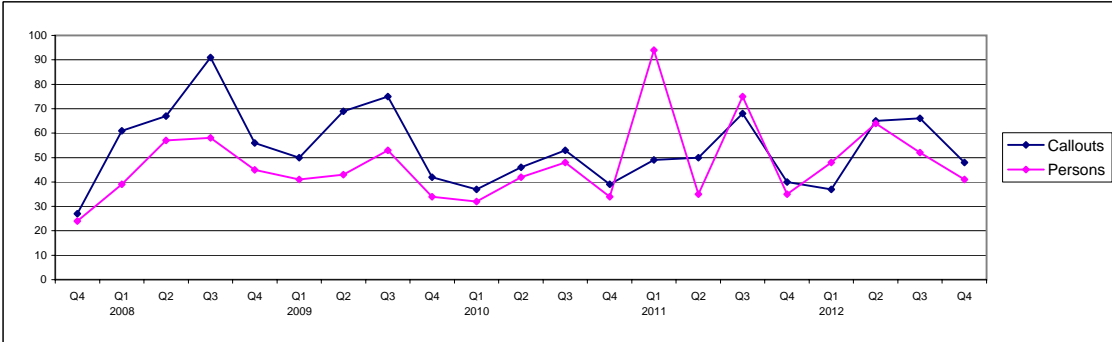
**Table 17 Callouts, Persons Moved, Flying Hours and Distance from Base, 2012**

|              | Callouts   | Persons    | Average Flying Hours <sup>6</sup> | Average Distance from base |
|--------------|------------|------------|-----------------------------------|----------------------------|
| January      | 17         | 14         | 4.27                              | 78                         |
| February     | 12         | 9          | 2.29                              | 59                         |
| March        | 8          | 25         | 2.39                              | 78                         |
| April        | 16         | 12         | 2.59                              | 64                         |
| May          | 16         | 15         | 2.22                              | 61                         |
| June         | 33         | 37         | 1.49                              | 61                         |
| July         | 18         | 6          | 2.03                              | 46                         |
| August       | 27         | 27         | 1.47                              | 58                         |
| September    | 21         | 19         | 2.02                              | 62                         |
| October      | 18         | 18         | 1.43                              | 47                         |
| November     | 8          | 5          | 2.21                              | 79                         |
| December     | 22         | 18         | 3.01                              | 57                         |
| <b>Total</b> | <b>216</b> | <b>205</b> | <b>2.23</b>                       | <b>61</b>                  |

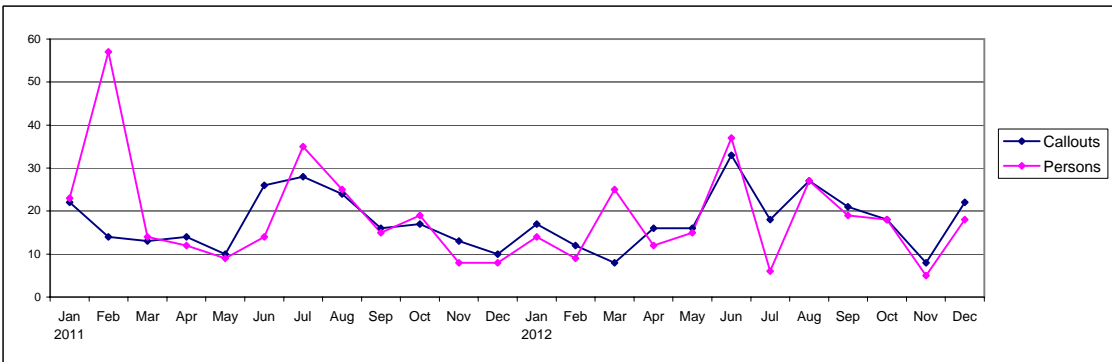
**Figure 16 Callouts and Persons Moved, 2003 to 2012**



**Figure 17 Callouts and Persons Moved, 2007 Q4 to 2012 Q4**



**Figure 18 Callouts and Persons Moved, 2011 to 2012**



## 4. RAF Lossiemouth

Figure 19 Callouts by Callout Grouping, 2003 to 2012

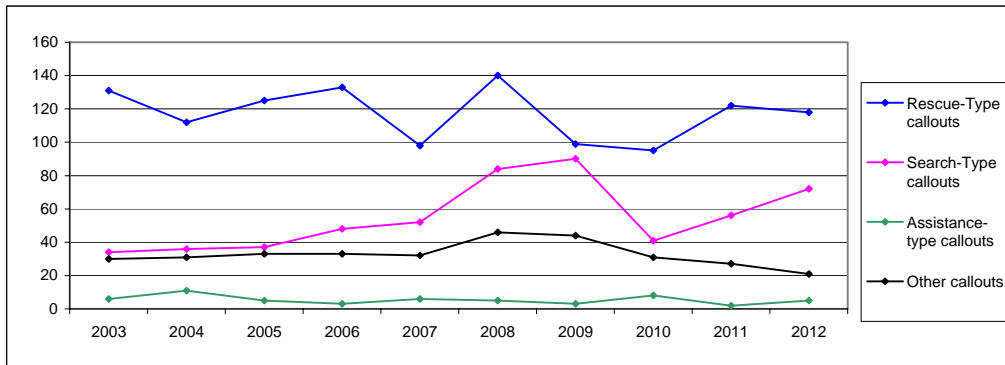


Figure 20 Callouts by Callout Grouping, 2007 Q4 to 2012 Q4

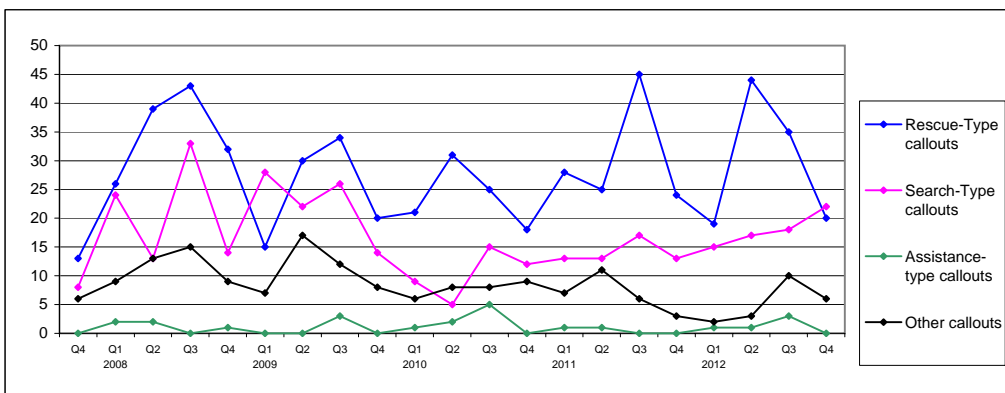


Table 18 Persons Moved by Assistance Type, 2003 to 2012

|                            | 2003       | 2004       | 2005       | 2006       | 2007       | 2008       | 2009       | 2010       | 2011       | 2012       |
|----------------------------|------------|------------|------------|------------|------------|------------|------------|------------|------------|------------|
| Rescue                     | 61         | 101        | 58         | 53         | 42         | 48         | 20         | 30         | 84         | 69         |
| Search-Rescue              | 0          | 0          | 0          | 0          | 15         | 12         | 29         | 23         | 23         | 14         |
| Medrescue                  | 107        | 79         | 102        | 103        | 83         | 109        | 78         | 77         | 112        | 101        |
| Search-Medrescue           | 0          | 0          | 0          | 0          | 7          | 7          | 18         | 9          | 9          | 8          |
| Medtransfer                | 10         | 16         | 10         | 16         | 9          | 18         | 16         | 14         | 4          | 3          |
| Recovery                   | 5          | 3          | 9          | 6          | 2          | 4          | 4          | 1          | 3          | 7          |
| Search-Recovery            | 0          | 0          | 0          | 0          | 1          | 1          | 4          | 2          | 4          | 3          |
| Transfer                   | 1          | 0          | 2          | 2          | 1          | 0          | 2          | 0          | 0          | 0          |
| <b>Total Persons Moved</b> | <b>184</b> | <b>199</b> | <b>181</b> | <b>180</b> | <b>160</b> | <b>199</b> | <b>171</b> | <b>156</b> | <b>239</b> | <b>205</b> |



## 5. RAF Leconfield

RAF Leconfield is located in East Riding of Yorkshire. The SAR unit forms part of the "E" Flight 202 Squadron.

As shown in [Map 5](#), RAF Leconfield typically respond to incidents in the northern half of England, particularly along the east coast.

[Table 19](#) presents the number of callouts, persons moved, average flying hours and average distance travelled from base for RAF Leconfield between 2003 and 2012. There was a large fall in callout numbers between 2011 and 2012 (23% decrease). The number of callouts in 2012 was around 44% lower than the peak level of 232 callouts in 2008. The number of persons moved showed a similar level of decrease.

[Table 20](#) presents the number of callouts, persons moved, average flying hours and average distance travelled from base for RAF Leconfield for each month of 2012.

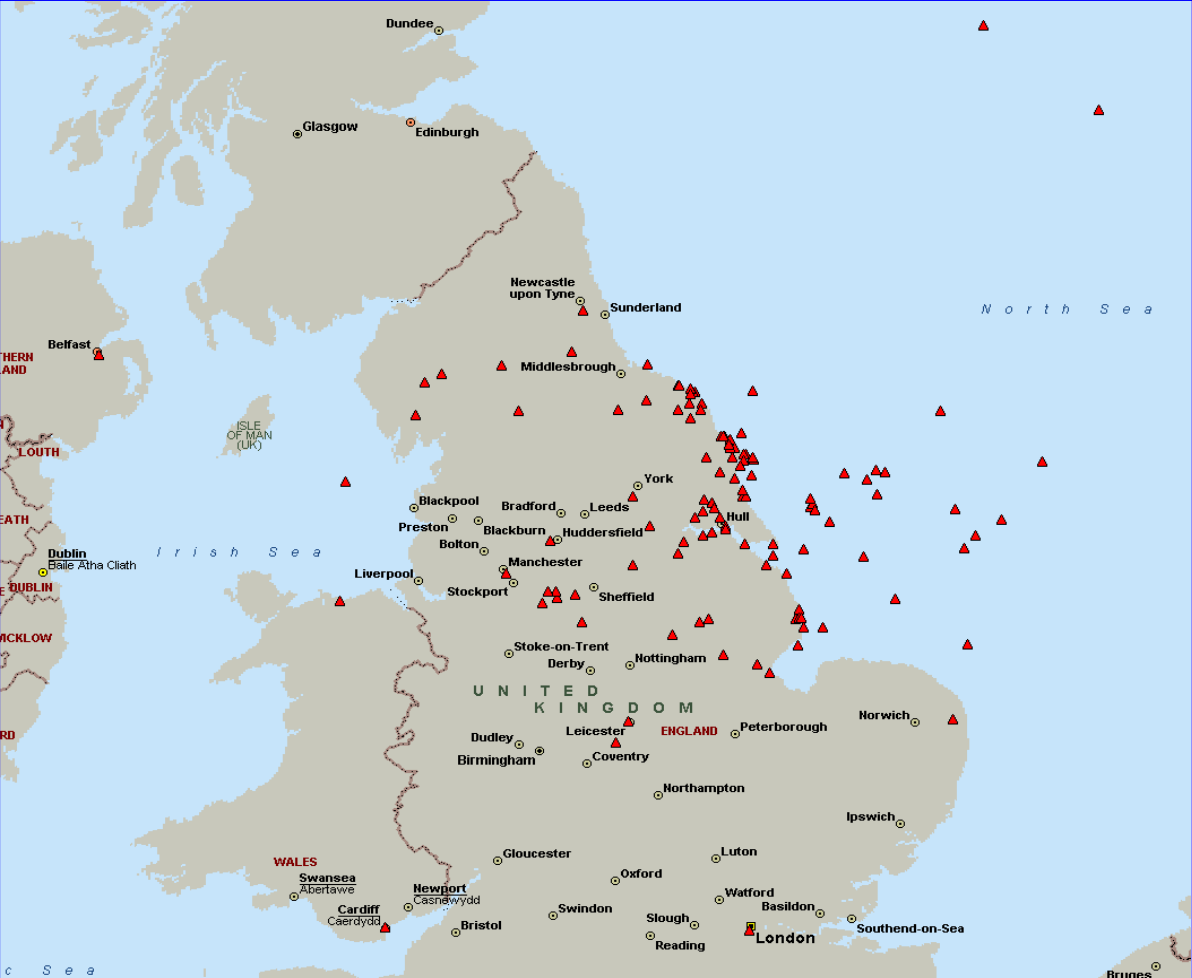
[Figure 21](#), [Figure 22](#) and [Figure 23](#) show the number of callouts from RAF Leconfield on an annual, quarterly and monthly basis respectively. In common with most SAR units, RAF Lossiemouth tends to see the peak of its activity during the warmer summer months. There has been a distinct downward trend in callout numbers since 2008.

[Figure 24](#) and [Figure 25](#) show the historic time series for callouts based on the groupings shown on page 55 of this report.

[Table 21](#) shows the persons moved by RAF Leconfield by assistance type between 2003 and 2012. There was a large fall in the number of people Rescued between 2011 and 2012 (51% decrease). There was also a reduction in the number of people Medrescued (8% decrease)

# 5. RAF Leconfield

Map 5 RAF Leconfield Callouts, 2012



## 5. RAF Leconfield

**Table 19 Callouts, Persons Moved, Flying Hours and Distance from base, 2003 to 2012**

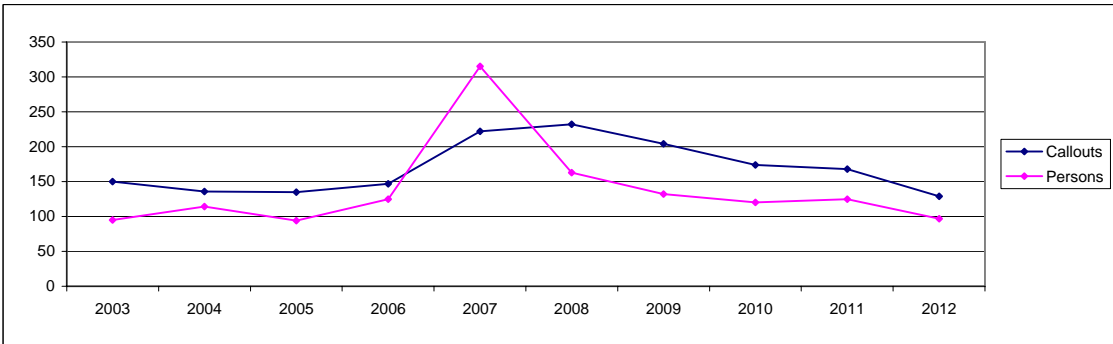
|      | Callouts | Persons | Average Flying Hours <sup>6</sup> | Average Distance from base |
|------|----------|---------|-----------------------------------|----------------------------|
| 2003 | 150      | 95      | 1.24                              | 46                         |
| 2004 | 136      | 114     | 1.33                              | 50                         |
| 2005 | 135      | 94      | 1.30                              | 43                         |
| 2006 | 147      | 125     | 1.42                              | 50                         |
| 2007 | 222      | 315     | 1.44                              | 43                         |
| 2008 | 232      | 163     | 1.21                              | 43                         |
| 2009 | 204      | 132     | 1.38                              | 50                         |
| 2010 | 174      | 120     | 1.33                              | 44                         |
| 2011 | 168      | 125     | 1.16                              | 43                         |
| 2012 | 129      | 97      | 1.34                              | 46                         |

6. Times are expressed in hours and minutes

**Table 20 Callouts, Persons Moved, Flying Hours and Distance from Base, 2012**

|              | Callouts   | Persons   | Average Flying Hours <sup>6</sup> | Average Distance from base |
|--------------|------------|-----------|-----------------------------------|----------------------------|
| January      | 11         | 8         | 1.44                              | 47                         |
| February     | 2          | 2         | 2.20                              | 43                         |
| March        | 8          | 7         | 2.01                              | 53                         |
| April        | 9          | 9         | 1.22                              | 45                         |
| May          | 10         | 6         | 1.26                              | 33                         |
| June         | 12         | 9         | 1.30                              | 37                         |
| July         | 15         | 17        | 1.05                              | 43                         |
| August       | 25         | 11        | 1.15                              | 36                         |
| September    | 10         | 9         | 1.38                              | 52                         |
| October      | 10         | 8         | 1.25                              | 37                         |
| November     | 9          | 5         | 1.59                              | 49                         |
| December     | 8          | 6         | 2.47                              | 99                         |
| <b>Total</b> | <b>129</b> | <b>97</b> | <b>1.34</b>                       | <b>46</b>                  |

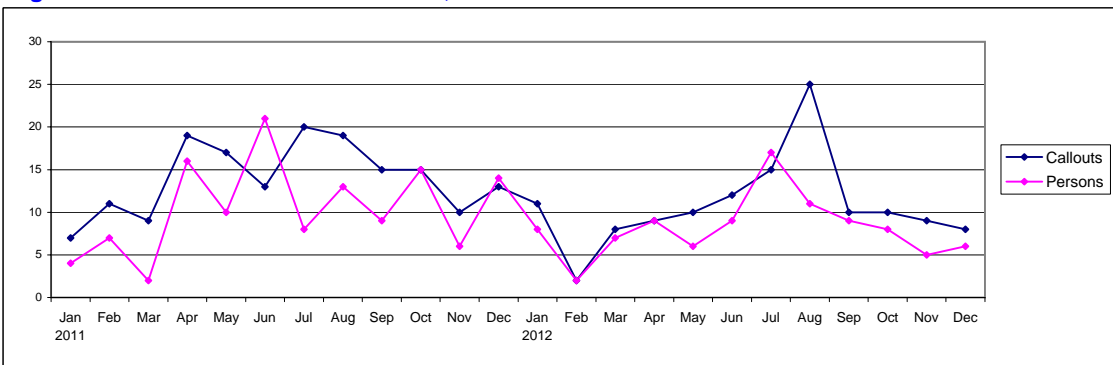
**Figure 21 Callouts and Persons Moved, 2003 to 2012**



**Figure 22 Callouts and Persons Moved, 2007 Q4 to 2012 Q4**



**Figure 23 Callouts and Persons Moved, 2011 to 2012**



## 5. RAF Leconfield

Figure 24 Callouts by Callout Grouping, 2003 to 2012

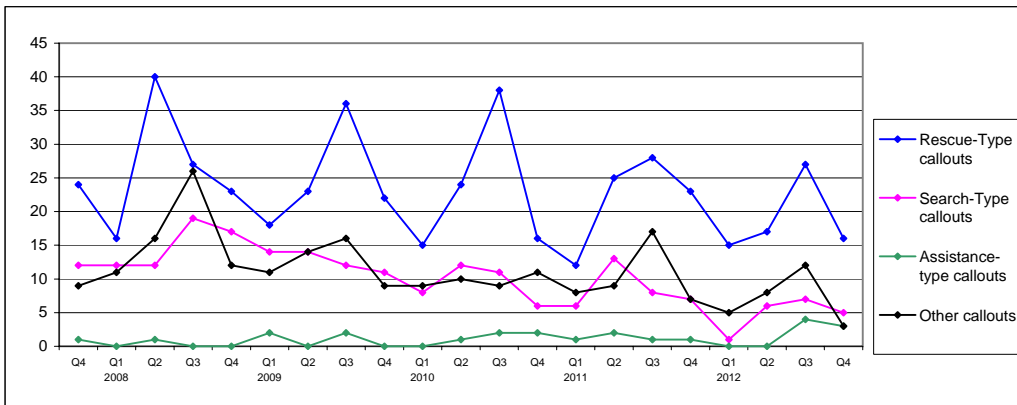


Figure 25 Callouts by Callout Grouping, 2007 Q4 to 2012 Q4

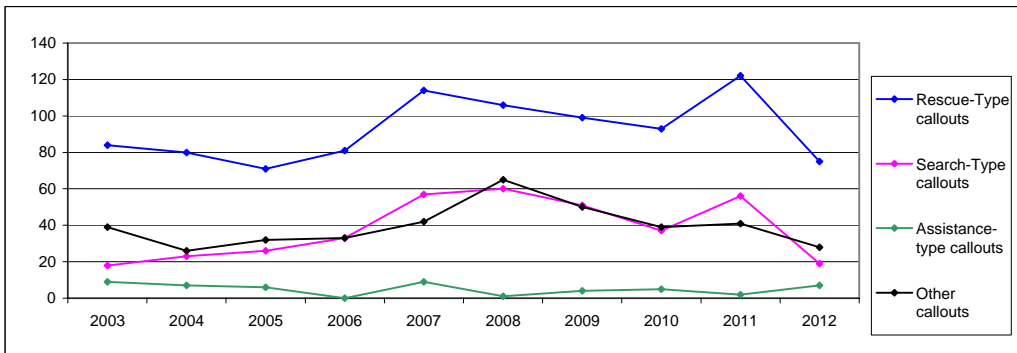


Table 21 Persons Moved by Assistance Type, 2003 to 2012

|                            | 2003      | 2004       | 2005      | 2006       | 2007       | 2008       | 2009       | 2010       | 2011       | 2012      |
|----------------------------|-----------|------------|-----------|------------|------------|------------|------------|------------|------------|-----------|
| Rescue                     | 13        | 33         | 22        | 35         | 187        | 35         | 25         | 18         | 37         | 18        |
| Search-Rescue              | 0         | 0          | 0         | 0          | 1          | 14         | 2          | 6          | 3          | 5         |
| Medrescue                  | 62        | 57         | 62        | 75         | 107        | 97         | 80         | 84         | 71         | 65        |
| Search-Medrescue           | 0         | 0          | 0         | 0          | 4          | 5          | 5          | 2          | 2          | 1         |
| Medtransfer                | 20        | 18         | 9         | 10         | 14         | 10         | 13         | 7          | 7          | 6         |
| Recovery                   | 0         | 5          | 0         | 2          | 1          | 0          | 1          | 0          | 1          | 2         |
| Search-Recovery            | 0         | 0          | 0         | 0          | 0          | 1          | 2          | 1          | 1          | 0         |
| Transfer                   | 0         | 1          | 1         | 3          | 1          | 1          | 4          | 2          | 3          | 0         |
| <b>Total Persons Moved</b> | <b>95</b> | <b>114</b> | <b>94</b> | <b>125</b> | <b>315</b> | <b>163</b> | <b>132</b> | <b>120</b> | <b>125</b> | <b>97</b> |

## 6. RAF Valley

RAF Valley is located on Anglesey in North Wales. The SAR unit forms part of the "C" Flight 22 Squadron. Further information is available at:

<http://www.raf.mod.uk/rafvalley/>

As shown in [Map 6](#), RAF Valley's typical coverage area is the north of Wales, with the Snowdonia area typically seeing a high level of activity. They also provide coverage in the Irish Sea.

[Table 22](#) presents the number of callouts, persons moved, average flying hours and average distance travelled from base for RAF Valley between 2003 and 2012. RAF Valley's callout numbers have increased year on year over the past three years. The number of callouts in 2012 was 9% higher than in 2011. The number of persons moved increased by 15% between 2011 and 2012. This is reflected by the increase of callouts in Wales between 2011 and 2012 (see [Table 6](#)).

[Table 23](#) presents the number of callouts, persons moved, average flying hours and average distance travelled from base for RAF Valley for each month of 2012.

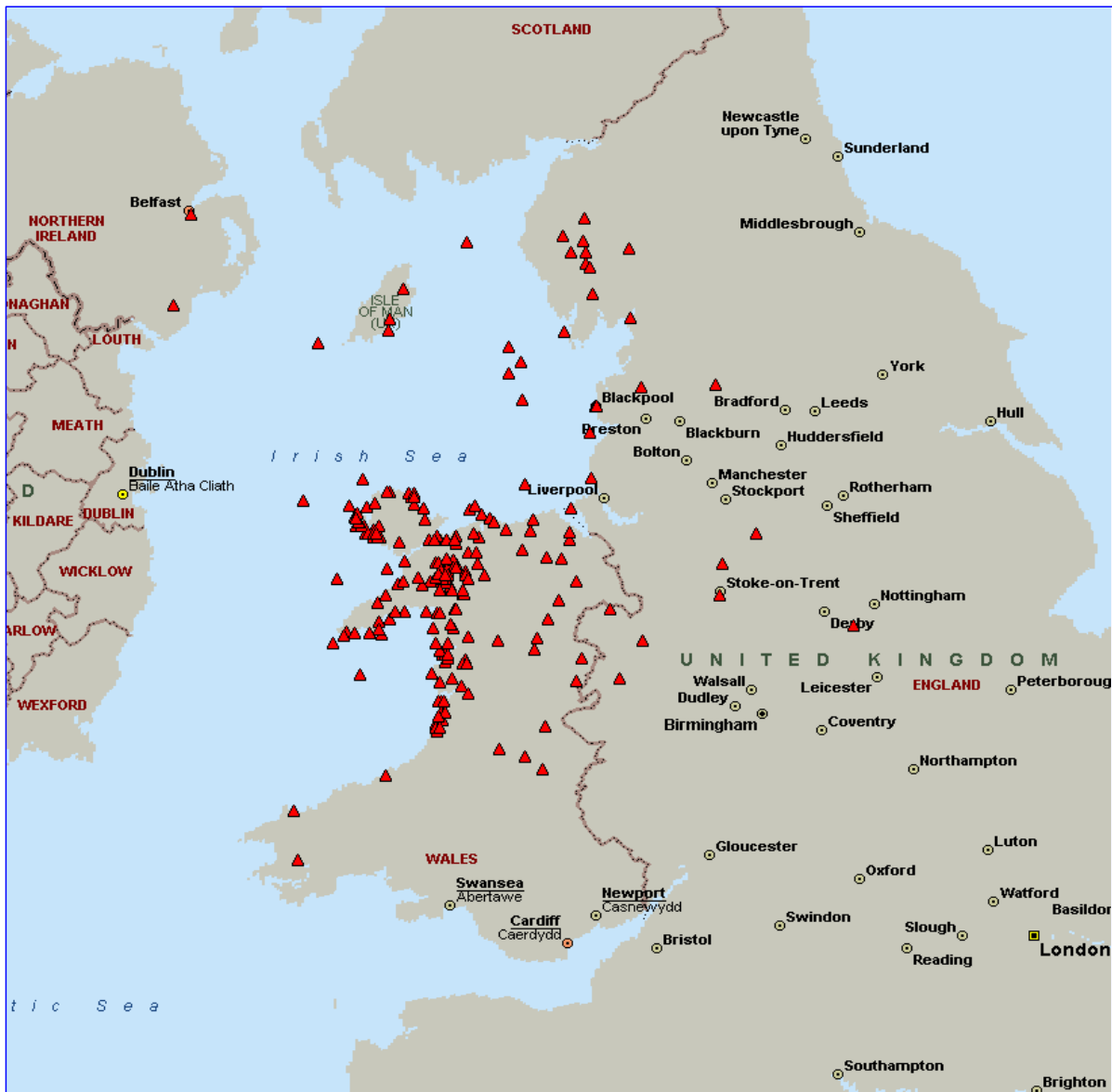
[Figure 26](#), [Figure 27](#) and [Figure 28](#) show the number of callouts from RAF Valley on an annual, quarterly and monthly basis respectively. In common with most SAR units, RAF Valley tends to see the peak of its activity during the warmer summer months.

[Figure 29](#) and [Figure 30](#) show the historic time series for callouts based on the groupings shown on [page 55](#) of this report.

[Table 24](#) shows the persons moved by RAF Valley by assistance type between 2003 and 2012. The number of people Medtransferred increased by 61% between 2011 and 2012. There were also increases in the number of people Rescued, Search-rescued and Medrescued.

## 6. RAF Valley

Map 6 RAF Valley Callouts, 2012



## 6. RAF Valley

**Table 22 Callouts, Persons Moved, Flying Hours and Distance from base, 2003 to 2012**

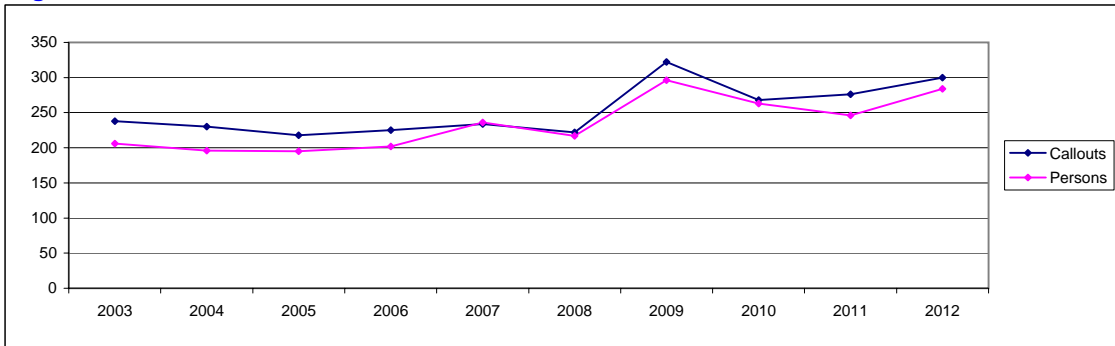
|      | Callouts | Persons | Average Flying Hours <sup>6</sup> | Average Distance from base |
|------|----------|---------|-----------------------------------|----------------------------|
| 2003 | 238      | 206     | 1.21                              | 29                         |
| 2004 | 230      | 196     | 1.40                              | 46                         |
| 2005 | 218      | 195     | 1.33                              | 39                         |
| 2006 | 225      | 202     | 1.33                              | 35                         |
| 2007 | 234      | 236     | 1.42                              | 40                         |
| 2008 | 222      | 217     | 1.40                              | 39                         |
| 2009 | 322      | 296     | 1.33                              | 37                         |
| 2010 | 268      | 263     | 1.29                              | 32                         |
| 2011 | 276      | 246     | 1.27                              | 30                         |
| 2012 | 300      | 284     | 1.29                              | 30                         |

6. Times are expressed in hours and minutes

**Table 23 Callouts, Persons Moved, Flying Hours and Distance from Base, 2012**

|              | Callouts   | Persons    | Average Flying Hours <sup>6</sup> | Average Distance from base |
|--------------|------------|------------|-----------------------------------|----------------------------|
| January      | 9          | 7          | 1.49                              | 37                         |
| February     | 17         | 14         | 1.20                              | 30                         |
| March        | 25         | 29         | 1.29                              | 30                         |
| April        | 16         | 11         | 1.22                              | 32                         |
| May          | 32         | 25         | 1.08                              | 25                         |
| June         | 37         | 32         | 1.14                              | 26                         |
| July         | 39         | 37         | 1.52                              | 28                         |
| August       | 42         | 44         | 1.26                              | 27                         |
| September    | 25         | 18         | 1.24                              | 36                         |
| October      | 21         | 26         | 1.37                              | 32                         |
| November     | 20         | 24         | 1.44                              | 36                         |
| December     | 17         | 17         | 1.34                              | 47                         |
| <b>Total</b> | <b>300</b> | <b>284</b> | <b>1.29</b>                       | <b>30</b>                  |

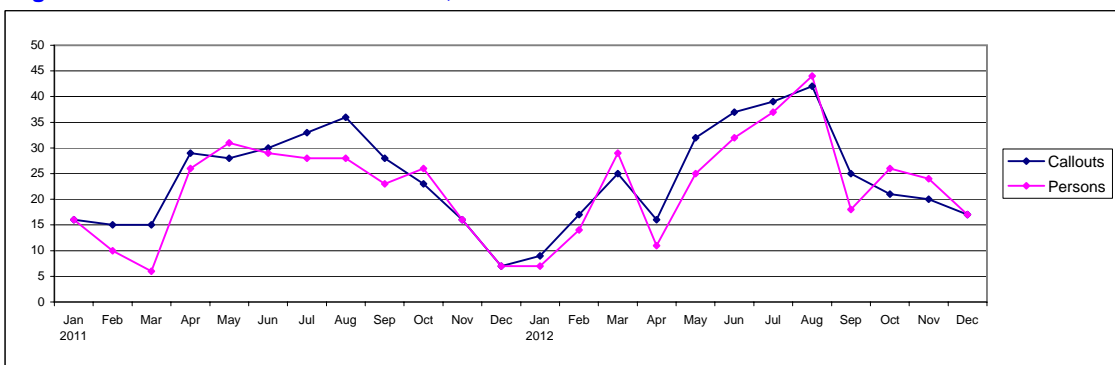
**Figure 26 Callouts and Persons Moved, 2003 to 2012**



**Figure 27 Callouts and Persons Moved, 2007 Q4 to 2012 Q4**



**Figure 28 Callouts and Persons Moved, 2011 to 2012**



## 6. RAF Valley

Figure 29 Callouts by Callout Grouping, 2003 to 2012

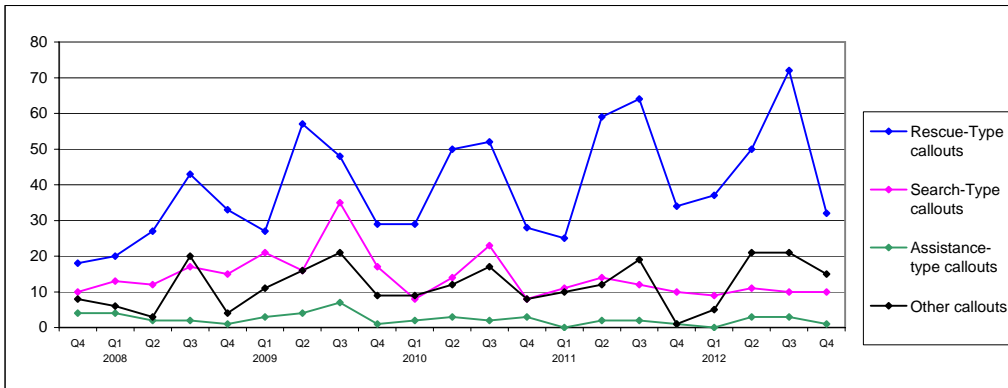


Figure 30 Callouts by Callout Grouping, 2007 Q4 to 2012 Q4

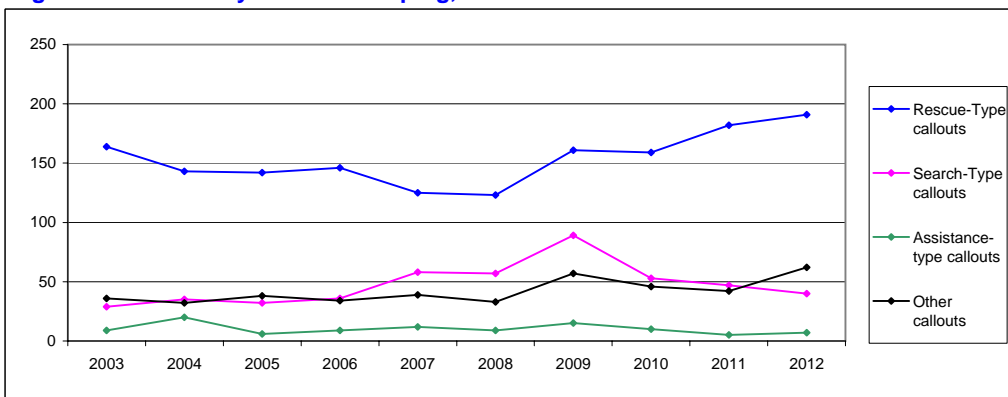


Table 24 Persons Moved by Assistance Type, 2003 to 2012

|                            | 2003       | 2004       | 2005       | 2006       | 2007       | 2008       | 2009       | 2010       | 2011       | 2012       |
|----------------------------|------------|------------|------------|------------|------------|------------|------------|------------|------------|------------|
| Rescue                     | 52         | 64         | 71         | 54         | 84         | 72         | 40         | 74         | 46         | 66         |
| Search-Rescue              | 0          | 0          | 0          | 0          | 20         | 6          | 75         | 26         | 10         | 20         |
| Medrescue                  | 132        | 111        | 109        | 128        | 103        | 97         | 144        | 127        | 151        | 161        |
| Search-Medrescue           | 0          | 0          | 0          | 0          | 9          | 18         | 16         | 15         | 19         | 8          |
| Medtransfer                | 17         | 15         | 11         | 7          | 14         | 7          | 8          | 13         | 13         | 21         |
| Recovery                   | 4          | 6          | 4          | 7          | 5          | 5          | 3          | 4          | 5          | 7          |
| Search-Recovery            | 0          | 0          | 0          | 0          | 0          | 3          | 5          | 2          | 1          | 1          |
| Transfer                   | 1          | 0          | 0          | 6          | 1          | 9          | 5          | 2          | 1          | 0          |
| <b>Total Persons Moved</b> | <b>206</b> | <b>196</b> | <b>195</b> | <b>202</b> | <b>236</b> | <b>217</b> | <b>296</b> | <b>263</b> | <b>246</b> | <b>284</b> |



## 7. RAF Chivenor

RAF Chivenor is located on the north Devon coast. The SAR unit forms part of the "A" Flight 22 Squadron.

As shown in [Map 7](#), RAF Chivenor typically respond to incidents in the south west of England, particularly along the coast of Devon and Dorset. They also provide coverage across south Wales.

[Table 25](#) presents the number of callouts, persons moved, average flying hours and average distance travelled from base for RAF Chivenor between 2003 and 2012. The callout numbers during 2012 (266) were slightly lower than the long term average of 275. However the number of persons moved (187) was substantially lower than the long term average of 226.

RAF Chivenor had relatively few callouts during 2012 resulting in multiple persons being moved (the highest number of persons moved in a single callout was three). For comparison, during 2011 RAF Chivenor had five callouts which resulted in four or more persons being moved.

[Table 26](#) presents the number of callouts, persons moved, average flying hours and average distance travelled from base for RAF Chivenor for each month of 2012.

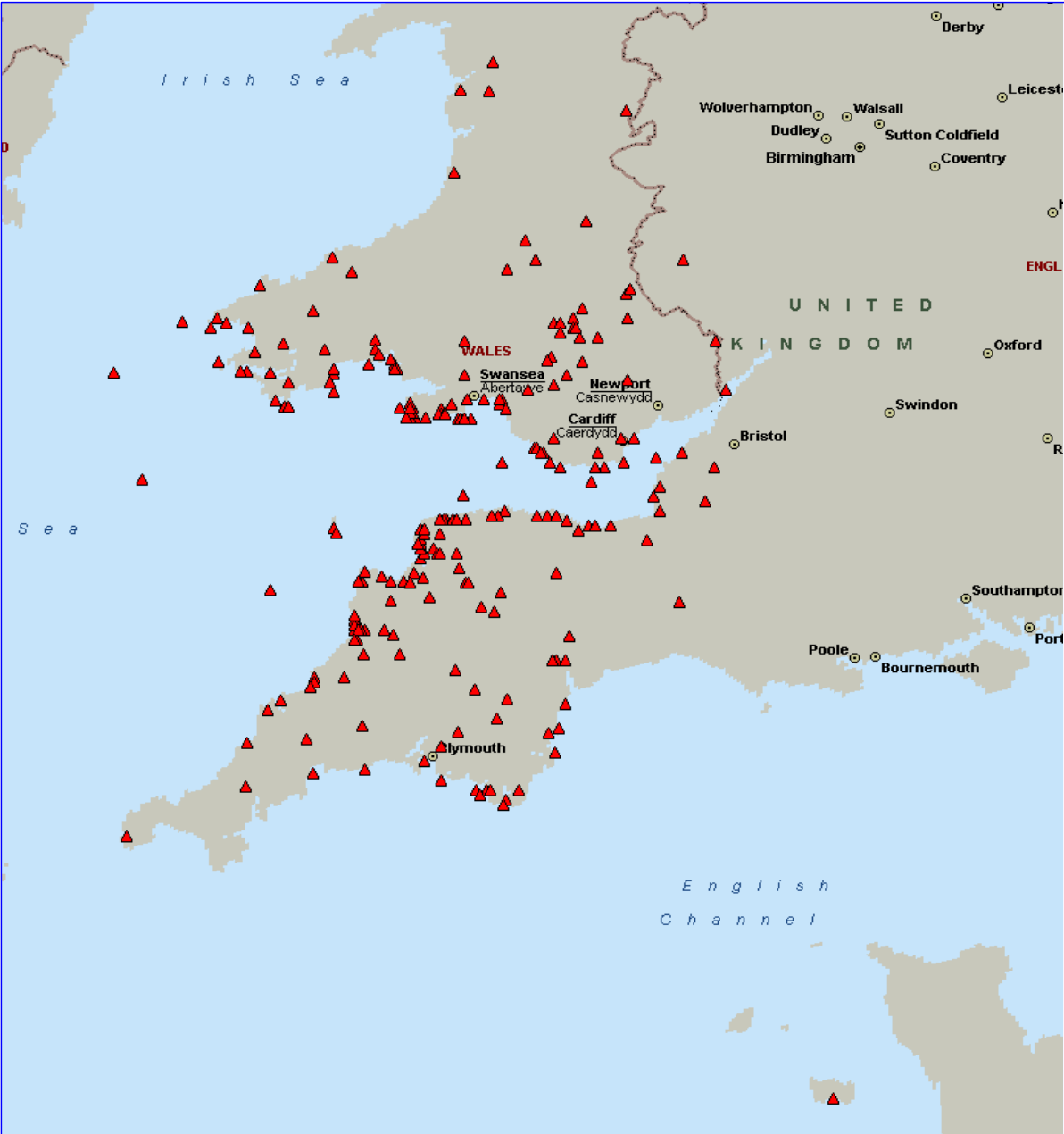
[Figure 31](#), [Figure 32](#) and [Figure 33](#) show the number of callouts from RAF Chivenor on an annual, quarterly and monthly basis respectively. In common with most SAR units, RAF Chivenor tends to see the peak of its activity during the warmer summer months.

[Figure 34](#) and [Figure 35](#) show the historic time series for callouts based on the groupings shown on page 55 of this report.

[Table 27](#) shows the persons moved by RAF Chivenor by assistance type between 2003 and 2012. There was a large decrease in the number of people Rescued between 2011 and 2012 (61% decrease), which was slightly offset by a small increase in the number of people Medrescued and Medtransferred.

# 7. RAF Chivenor

Map 7 RAF Chivenor Callouts, 2012



## 7. RAF Chivenor

**Table 25 Callouts, Persons Moved, Flying Hours and Distance from base, 2003 to 2012**

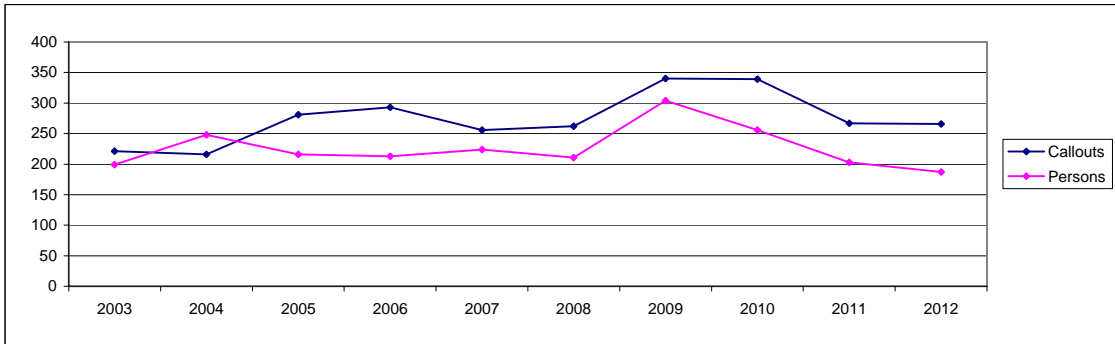
|      | Callouts | Persons | Average Flying Hours <sup>6</sup> | Average Distance from base |
|------|----------|---------|-----------------------------------|----------------------------|
| 2003 | 221      | 199     | 1.21                              | 43                         |
| 2004 | 216      | 248     | 1.27                              | 41                         |
| 2005 | 281      | 216     | 1.20                              | 38                         |
| 2006 | 293      | 213     | 1.26                              | 41                         |
| 2007 | 256      | 224     | 1.30                              | 41                         |
| 2008 | 262      | 211     | 1.17                              | 37                         |
| 2009 | 340      | 304     | 1.18                              | 40                         |
| 2010 | 339      | 256     | 1.09                              | 38                         |
| 2011 | 267      | 203     | 1.13                              | 37                         |
| 2012 | 266      | 187     | 1.18                              | 35                         |

6. Times are expressed in hours and minutes

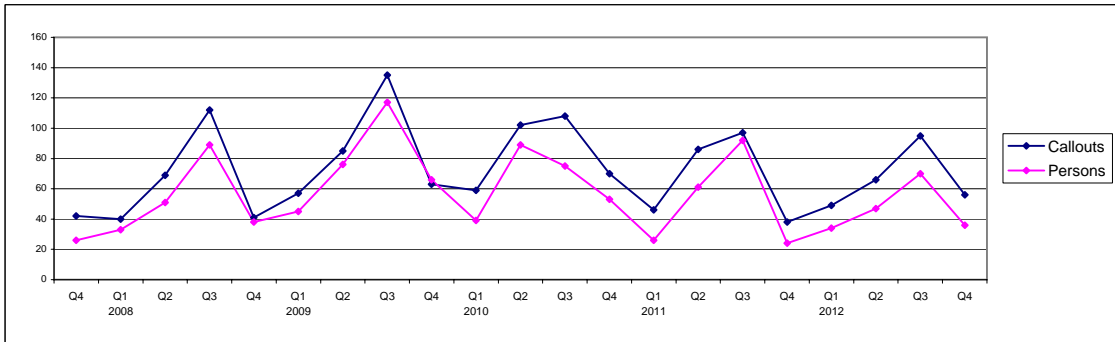
**Table 26 Callouts, Persons Moved, Flying Hours and Distance from Base, 2012**

|              | Callouts   | Persons    | Average Flying Hours <sup>6</sup> | Average Distance from base |
|--------------|------------|------------|-----------------------------------|----------------------------|
| January      | 15         | 9          | 1.07                              | 34                         |
| February     | 15         | 11         | 1.46                              | 42                         |
| March        | 19         | 14         | 0.55                              | 32                         |
| April        | 20         | 16         | 1.12                              | 35                         |
| May          | 22         | 14         | 1.31                              | 42                         |
| June         | 24         | 17         | 1.15                              | 34                         |
| July         | 38         | 29         | 1.17                              | 33                         |
| August       | 40         | 27         | 1.08                              | 32                         |
| September    | 17         | 14         | 1.34                              | 28                         |
| October      | 27         | 19         | 1.24                              | 38                         |
| November     | 9          | 6          | 1.21                              | 44                         |
| December     | 20         | 11         | 1.15                              | 36                         |
| <b>Total</b> | <b>266</b> | <b>187</b> | <b>1.18</b>                       | <b>35</b>                  |

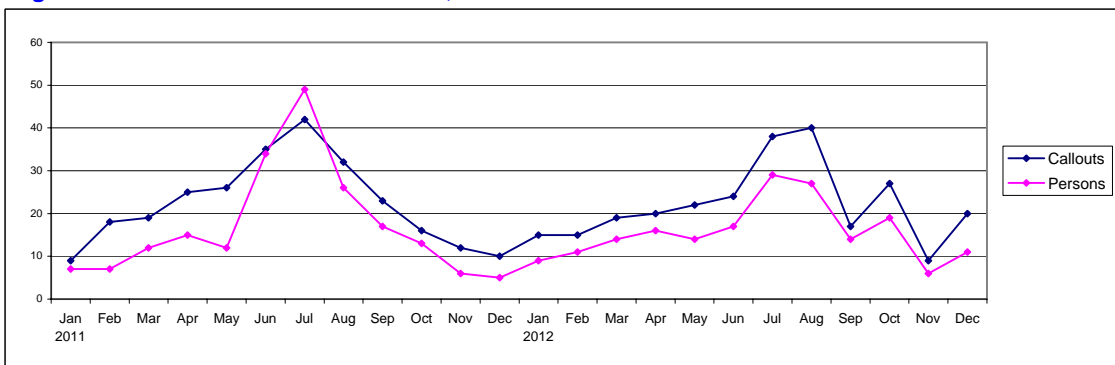
**Figure 31 Callouts and Persons Moved, 2003 to 2012**



**Figure 32 Callouts and Persons Moved, 2007 Q4 to 2012 Q4**



**Figure 33 Callouts and Persons Moved, 2011 to 2012**



## 7. RAF Chivenor

Figure 34 Callouts by Callout Grouping, 2003 to 2012

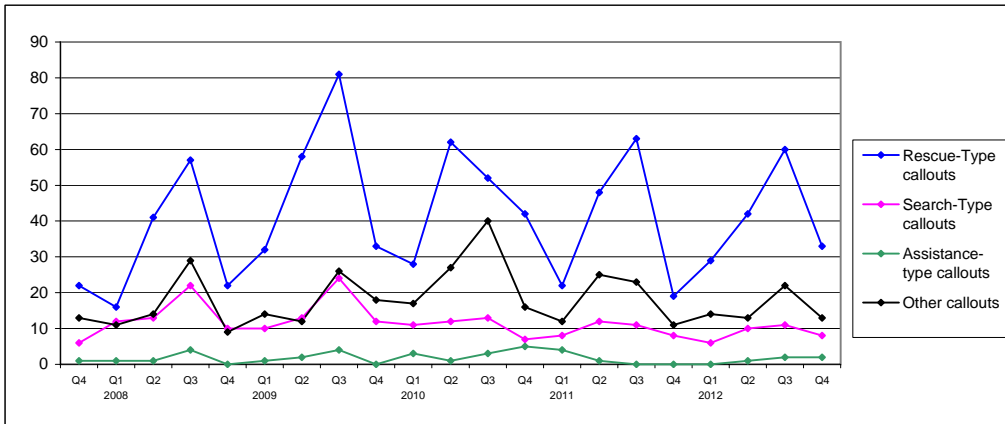


Figure 35 Callouts by Callout Grouping, 2007 Q4 to 2012 Q4

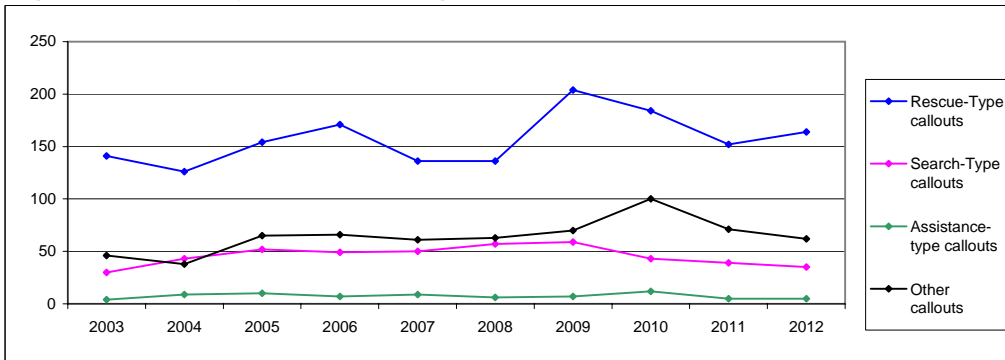


Table 27 Persons Moved by Assistance Type, 2003 to 2012

|                            | 2003       | 2004       | 2005       | 2006       | 2007       | 2008       | 2009       | 2010       | 2011       | 2012       |
|----------------------------|------------|------------|------------|------------|------------|------------|------------|------------|------------|------------|
| Rescue                     | 61         | 147        | 61         | 48         | 71         | 51         | 71         | 59         | 57         | 22         |
| Search-Rescue              | 0          | 0          | 0          | 0          | 5          | 4          | 12         | 6          | 5          | 4          |
| Medrescue                  | 105        | 79         | 128        | 133        | 108        | 118        | 175        | 151        | 118        | 132        |
| Search-Medrescue           | 0          | 0          | 0          | 0          | 20         | 9          | 8          | 10         | 2          | 6          |
| Medtransfer                | 28         | 19         | 19         | 18         | 15         | 23         | 32         | 21         | 18         | 20         |
| Recovery                   | 4          | 2          | 3          | 6          | 1          | 6          | 3          | 2          | 1          | 3          |
| Search-Recovery            | 0          | 0          | 0          | 0          | 0          | 0          | 1          | 0          | 0          | 0          |
| Transfer                   | 1          | 1          | 5          | 8          | 4          | 0          | 2          | 7          | 2          | 0          |
| <b>Total Persons Moved</b> | <b>199</b> | <b>248</b> | <b>216</b> | <b>213</b> | <b>224</b> | <b>211</b> | <b>304</b> | <b>256</b> | <b>203</b> | <b>187</b> |

## 8. RAF Wattisham

RAF Wattisham is located in Suffolk. The SAR unit forms part of the "B" Flight 22 Squadron.

As shown in [Map 8](#), RAF Wattisham typically respond to incidents throughout East Anglia and the south east of England. They also provide coverage across the southern areas of the North Sea.

[Table 28](#) presents the number of callouts, persons moved, average flying hours and average distance travelled from base for RAF Wattisham between 2003 and 2012. The number of callouts, persons, flying hours and distance travelled from base were all broadly in line with previous years.

[Table 29](#) presents the number of callouts, persons moved, average flying hours and average distance travelled from base for RAF Wattisham for each month of 2012.

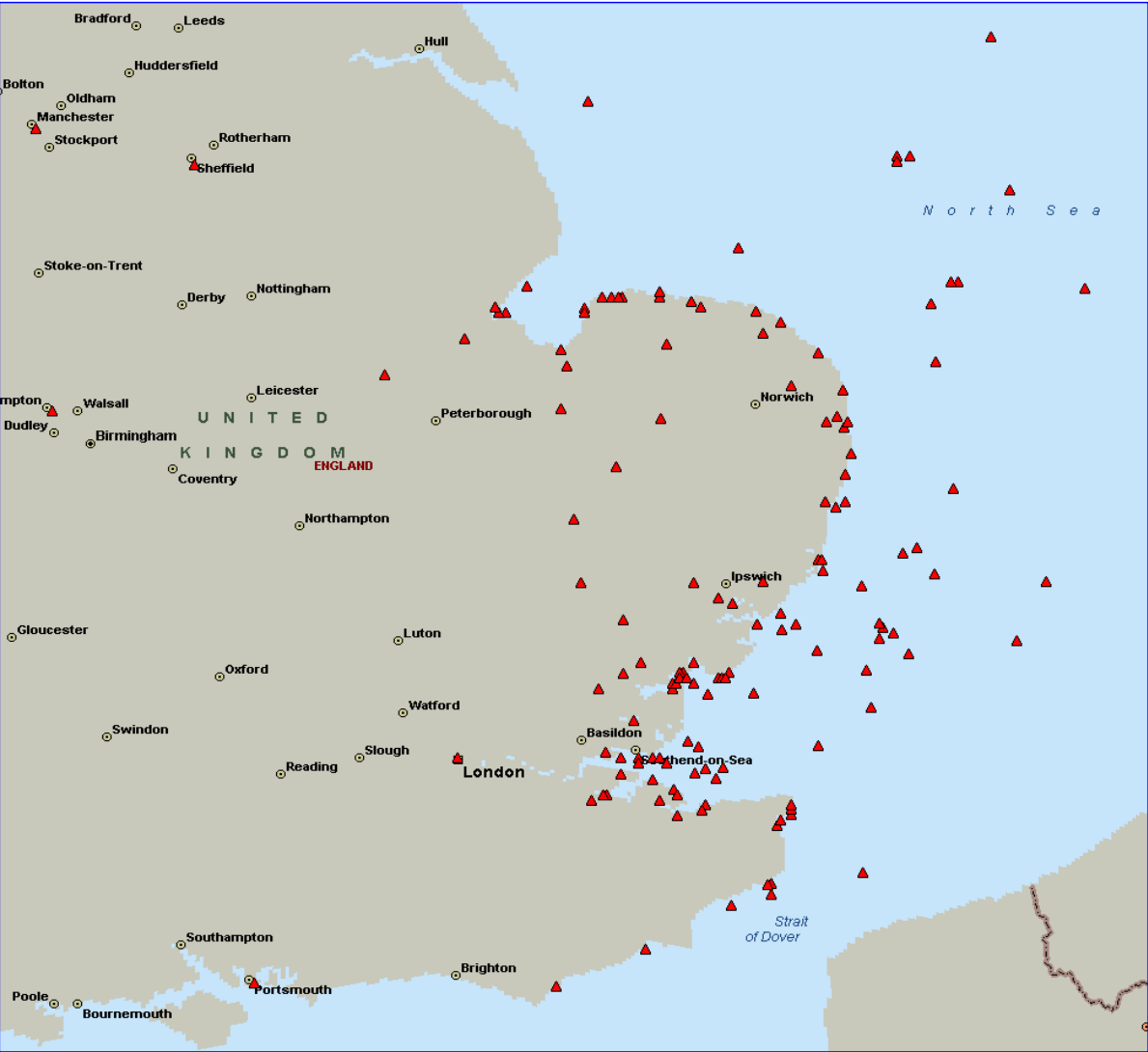
[Figure 36](#), [Figure 37](#) and [Figure 38](#) show the number of callouts from RAF Wattisham on an annual, quarterly and monthly basis respectively. In common with most SAR units, RAF Wattisham tends to see the peak of its activity during the warmer summer months.

[Figure 39](#) and [Figure 40](#) show the historic time series for callouts based on the groupings shown on page 55 of this report.

[Table 30](#) shows the persons moved by RAF Wattisham by assistance type between 2003 and 2012. There was a large fall in the number of people Rescued between 2011 and 2012 (62% decrease). The number of persons moved in other categories remained fairly constant.

# 8. RAF Wattisham

Map 8 RAF Wattisham Callouts, 2012



## 8. RAF Wattisham

**Table 28 Callouts, Persons Moved, Flying Hours and Distance from base, 2003 to 2012**

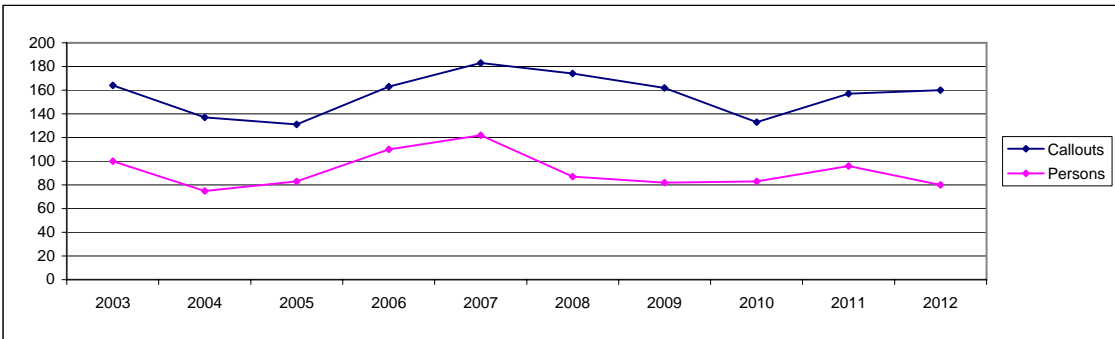
|      | Callouts | Persons | Average Flying Hours <sup>6</sup> | Average Distance from base |
|------|----------|---------|-----------------------------------|----------------------------|
| 2003 | 164      | 100     | 1.16                              | 50                         |
| 2004 | 137      | 75      | 1.33                              | 54                         |
| 2005 | 131      | 83      | 1.34                              | 48                         |
| 2006 | 163      | 110     | 1.28                              | 49                         |
| 2007 | 183      | 122     | 1.44                              | 49                         |
| 2008 | 174      | 87      | 1.29                              | 50                         |
| 2009 | 162      | 82      | 1.27                              | 47                         |
| 2010 | 133      | 83      | 1.42                              | 49                         |
| 2011 | 157      | 96      | 1.27                              | 43                         |
| 2012 | 160      | 80      | 1.24                              | 44                         |

6. Times are expressed in hours and minutes

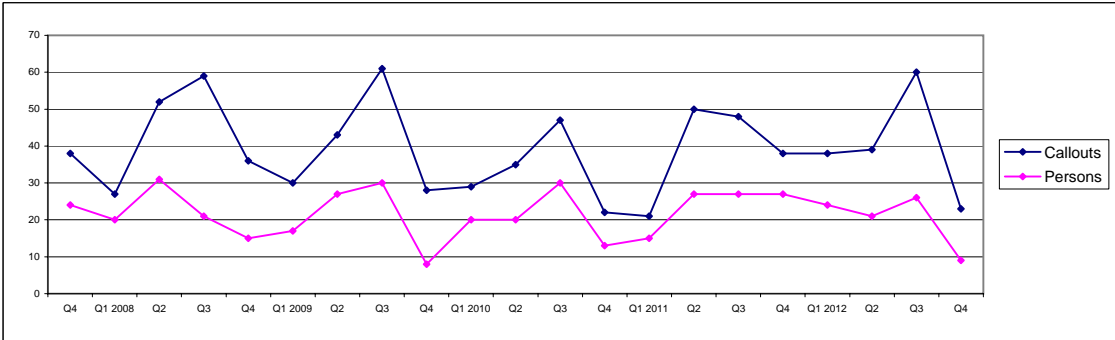
**Table 29 Callouts, Persons Moved, Flying Hours and Distance from Base, 2012**

|              | Callouts   | Persons   | Average Flying Hours <sup>6</sup> | Average Distance from base |
|--------------|------------|-----------|-----------------------------------|----------------------------|
| January      | 14         | 12        | 1.36                              | 48                         |
| February     | 12         | 7         | 1.42                              | 43                         |
| March        | 12         | 5         | 0.59                              | 38                         |
| April        | 11         | 2         | 0.41                              | 36                         |
| May          | 15         | 11        | 1.40                              | 46                         |
| June         | 13         | 8         | 1.57                              | 55                         |
| July         | 23         | 12        | 1.20                              | 45                         |
| August       | 25         | 8         | 0.56                              | 43                         |
| September    | 12         | 6         | 1.31                              | 40                         |
| October      | 6          | 2         | 0.52                              | 39                         |
| November     | 12         | 5         | 2.10                              | 43                         |
| December     | 5          | 2         | 1.33                              | 41                         |
| <b>Total</b> | <b>160</b> | <b>80</b> | <b>1.24</b>                       | <b>44</b>                  |

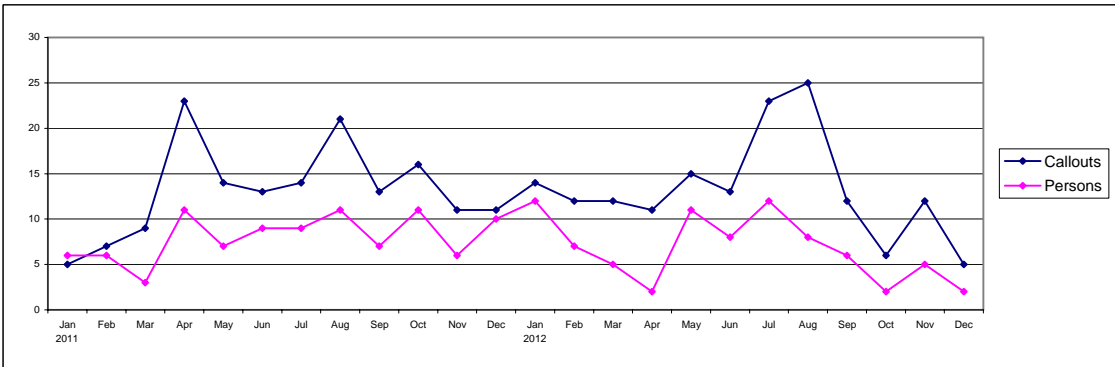
**Figure 36 Callouts and Persons Moved, 2003 to 2012**



**Figure 37 Callouts and Persons Moved, 2007 Q4 to 2012 Q4**



**Figure 38 Callouts and Persons Moved, 2011 to 2012**



## 8. RAF Wattisham

Figure 39 Callouts by Callout Grouping, 2003 to 2012

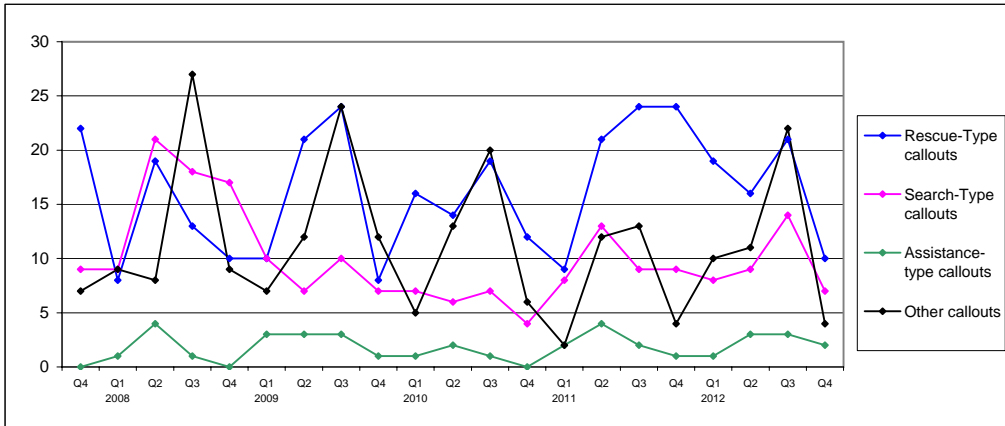


Figure 40 Callouts by Callout Grouping, 2007 Q4 to 2012 Q4

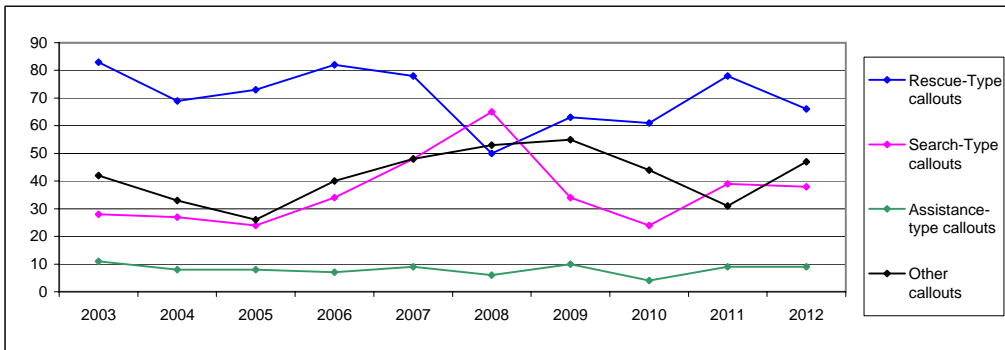


Table 30 Persons Moved by Assistance Type, 2003 to 2012

|                            | 2003       | 2004      | 2005      | 2006       | 2007       | 2008      | 2009      | 2010      | 2011      | 2012      |
|----------------------------|------------|-----------|-----------|------------|------------|-----------|-----------|-----------|-----------|-----------|
| Rescue                     | 14         | 4         | 12        | 26         | 28         | 7         | 21        | 24        | 21        | 8         |
| Search-Rescue              | 0          | 0         | 0         | 0          | 0          | 12        | 0         | 4         | 4         | 5         |
| Medrescue                  | 67         | 38        | 47        | 51         | 68         | 31        | 43        | 27        | 55        | 53        |
| Search-Medrescue           | 0          | 0         | 0         | 0          | 3          | 6         | 1         | 1         | 0         | 2         |
| Medtransfer                | 15         | 25        | 21        | 21         | 21         | 18        | 15        | 26        | 16        | 12        |
| Recovery                   | 2          | 1         | 0         | 4          | 0          | 1         | 2         | 1         | 0         | 0         |
| Search-Recovery            | 0          | 0         | 0         | 0          | 0          | 1         | 0         | 0         | 0         | 0         |
| Transfer                   | 2          | 7         | 3         | 8          | 2          | 11        | 0         | 0         | 0         | 0         |
| <b>Total Persons Moved</b> | <b>100</b> | <b>75</b> | <b>83</b> | <b>110</b> | <b>122</b> | <b>87</b> | <b>82</b> | <b>83</b> | <b>96</b> | <b>80</b> |



## 9. RNAS Culdrose

RNAS Culdrose is located in the south west of Cornwall. The SAR unit forms part of the 771 Naval Air Squadron. Further information is available at:

<http://www.royalnavy.mod.uk/The-Fleet/Air-Stations/RNAS-Culdrose>

As shown in [Map 9](#), RNAS Culdrose provide coverage across the south west of England, particularly around the coast of Cornwall. They also provide coverage to about half way across the Atlantic Ocean.

[Table 31](#) presents the number of callouts, persons moved, average flying hours and average distance travelled from base for RNAS Culdrose between 2003 and 2012. The number of callouts and persons moved increased slightly between 2011 and 2012, whilst the average flying hours and average distance from base remained fairly constant.

[Table 32](#) presents the number of callouts, persons moved, average flying hours and average distance travelled from base for RNAS Culdrose for each month of 2012.

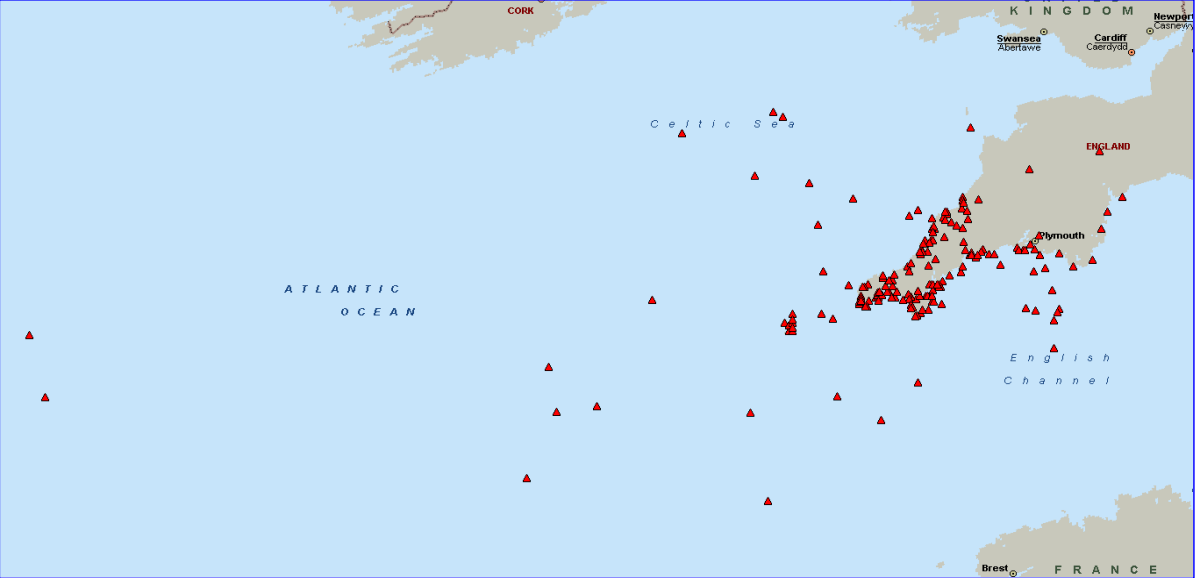
[Figure 41](#), [Figure 42](#) and [Figure 43](#) show the number of callouts from RNAS Culdrose on an annual, quarterly and monthly basis respectively. In common with most SAR units, RNAS Culdrose tends to see the peak of its activity during the warmer summer months.

[Figure 44](#) and [Figure 45](#) show the historic time series for callouts based on the groupings shown on page 55 of this report.

[Table 33](#) shows the persons moved by RNAS Culdrose by assistance type between 2003 and 2012. There was little change in the number of persons moved between 2011 and 2012.

# 9. RNAS Culdrose

Map 9 RNAS Culdrose Callouts, 2012



## 9. RNAS Culdrose

**Table 31 Callouts, Persons Moved, Flying Hours and Distance from base, 2003 to 2012**

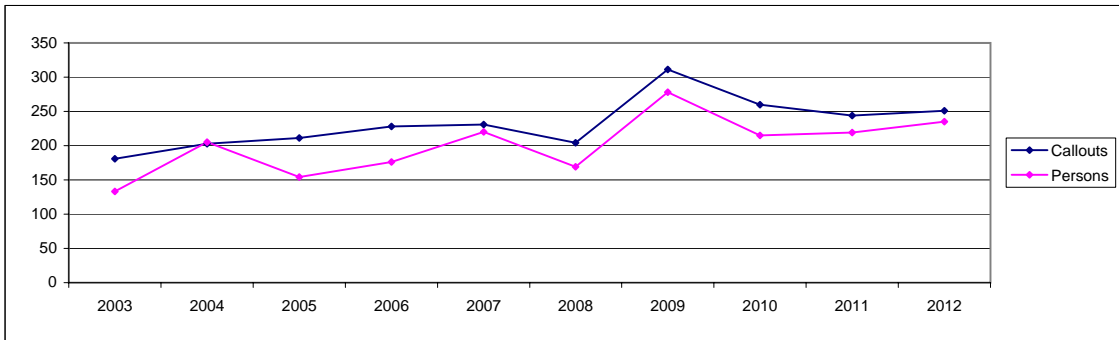
|      | Callouts | Persons | Average Flying Hours <sup>6</sup> | Average Distance from base |
|------|----------|---------|-----------------------------------|----------------------------|
| 2003 | 181      | 133     | 1.36                              | 41                         |
| 2004 | 203      | 205     | 1.52                              | 38                         |
| 2005 | 211      | 154     | 1.34                              | 41                         |
| 2006 | 228      | 176     | 1.35                              | 40                         |
| 2007 | 231      | 220     | 1.38                              | 42                         |
| 2008 | 204      | 169     | 1.30                              | 41                         |
| 2009 | 311      | 278     | 1.16                              | 32                         |
| 2010 | 260      | 215     | 1.21                              | 32                         |
| 2011 | 244      | 219     | 1.24                              | 33                         |
| 2012 | 251      | 235     | 1.24                              | 32                         |

6. Times are expressed in hours and minutes

**Table 32 Callouts, Persons Moved, Flying Hours and Distance from Base, 2012**

|              | Callouts   | Persons    | Average Flying Hours <sup>6</sup> | Average Distance from base |
|--------------|------------|------------|-----------------------------------|----------------------------|
| January      | 16         | 18         | 1.17                              | 33                         |
| February     | 10         | 10         | 2.31                              | 87                         |
| March        | 8          | 6          | 1.42                              | 22                         |
| April        | 19         | 23         | 1.30                              | 35                         |
| May          | 24         | 20         | 1.23                              | 35                         |
| June         | 30         | 31         | 1.32                              | 35                         |
| July         | 32         | 27         | 1.14                              | 22                         |
| August       | 35         | 33         | 1.14                              | 29                         |
| September    | 27         | 27         | 1.11                              | 28                         |
| October      | 16         | 12         | 1.42                              | 29                         |
| November     | 14         | 11         | 1.18                              | 28                         |
| December     | 20         | 17         | 1.14                              | 32                         |
| <b>Total</b> | <b>251</b> | <b>235</b> | <b>1.24</b>                       | <b>32</b>                  |

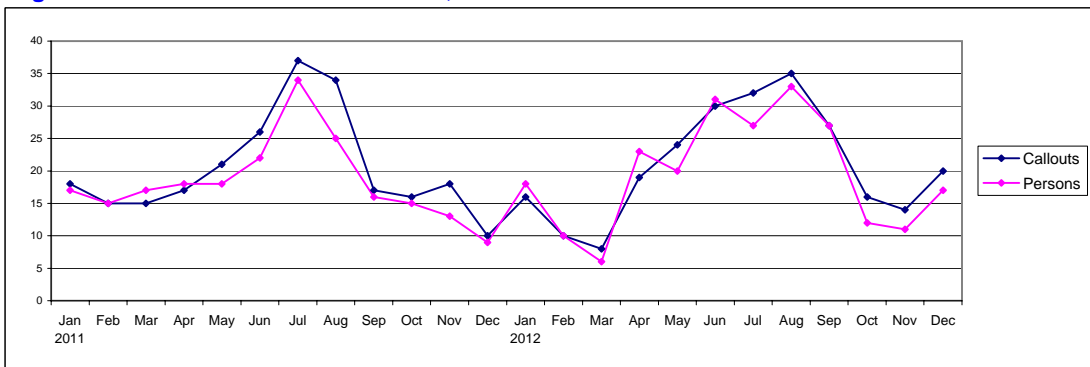
**Figure 41 Callouts and Persons Moved, 2003 to 2012**



**Figure 42 Callouts and Persons Moved, 2007 Q4 to 2012 Q4**



**Figure 43 Callouts and Persons Moved, 2011 to 2012**



## 9. RNAS Culdrose

Figure 44 Callouts by Callout Grouping, 2003 to 2012

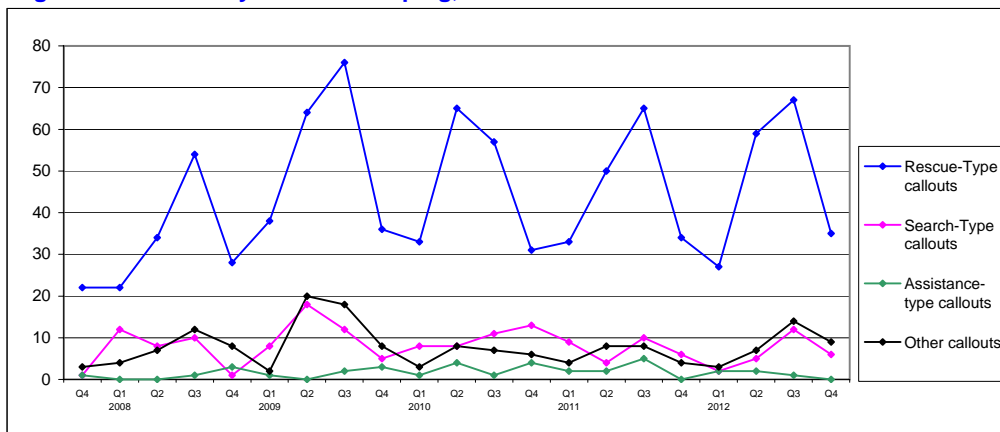


Figure 45 Callouts by Callout Grouping, 2007 Q4 to 2012 Q4

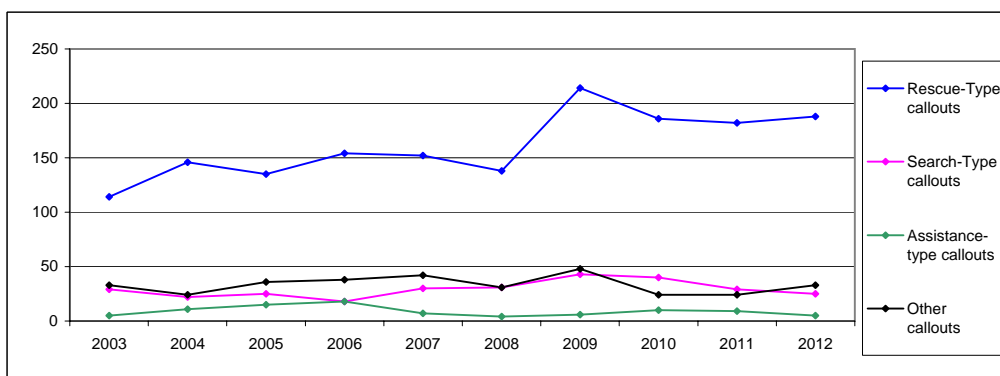


Table 33 Persons Moved by Assistance Type, 2003 to 2012

|                            | 2003       | 2004       | 2005       | 2006       | 2007       | 2008       | 2009       | 2010       | 2011       | 2012       |
|----------------------------|------------|------------|------------|------------|------------|------------|------------|------------|------------|------------|
| Rescue                     | 23         | 50         | 11         | 14         | 52         | 26         | 36         | 20         | 24         | 30         |
| Search-Rescue              | 0          | 0          | 0          | 0          | 0          | 3          | 4          | 1          | 2          | 2          |
| Medrescue                  | 86         | 112        | 112        | 125        | 127        | 96         | 190        | 148        | 130        | 141        |
| Search-Medrescue           | 0          | 0          | 0          | 0          | 1          | 3          | 2          | 5          | 7          | 9          |
| Medtransfer                | 21         | 38         | 28         | 34         | 36         | 26         | 38         | 39         | 52         | 49         |
| Recovery                   | 2          | 2          | 0          | 2          | 2          | 7          | 4          | 0          | 1          | 1          |
| Search-Recovery            | 0          | 0          | 0          | 0          | 0          | 2          | 0          | 1          | 1          | 0          |
| Transfer                   | 1          | 3          | 3          | 1          | 2          | 6          | 4          | 1          | 2          | 3          |
| <b>Total Persons Moved</b> | <b>133</b> | <b>205</b> | <b>154</b> | <b>176</b> | <b>220</b> | <b>169</b> | <b>278</b> | <b>215</b> | <b>219</b> | <b>235</b> |

## 10. HMS Gannet

HMS Gannet is located at Prestwick Airport, close to Glasgow. The SAR unit forms part of the 771 Naval Air Squadron. Further information is available at:

<http://www.royalnavy.mod.uk/The-Fleet/Shore-Establishments/HMS-Gannet>

As shown in [Map 10](#), HMS Gannet provide SAR coverage throughout Scotland. They also provide coverage in Northern Ireland.

[Table 34](#) presents the number of callouts, persons moved, average flying hours and average distance travelled from base for HMS Gannet between 2003 and 2012. There was no change in the number of callouts between 2011 and 2012, while the number of persons moved increased by 19%.

[Table 35](#) presents the number of callouts, persons moved, average flying hours and average distance from base for HMS Gannet for each month of 2012.

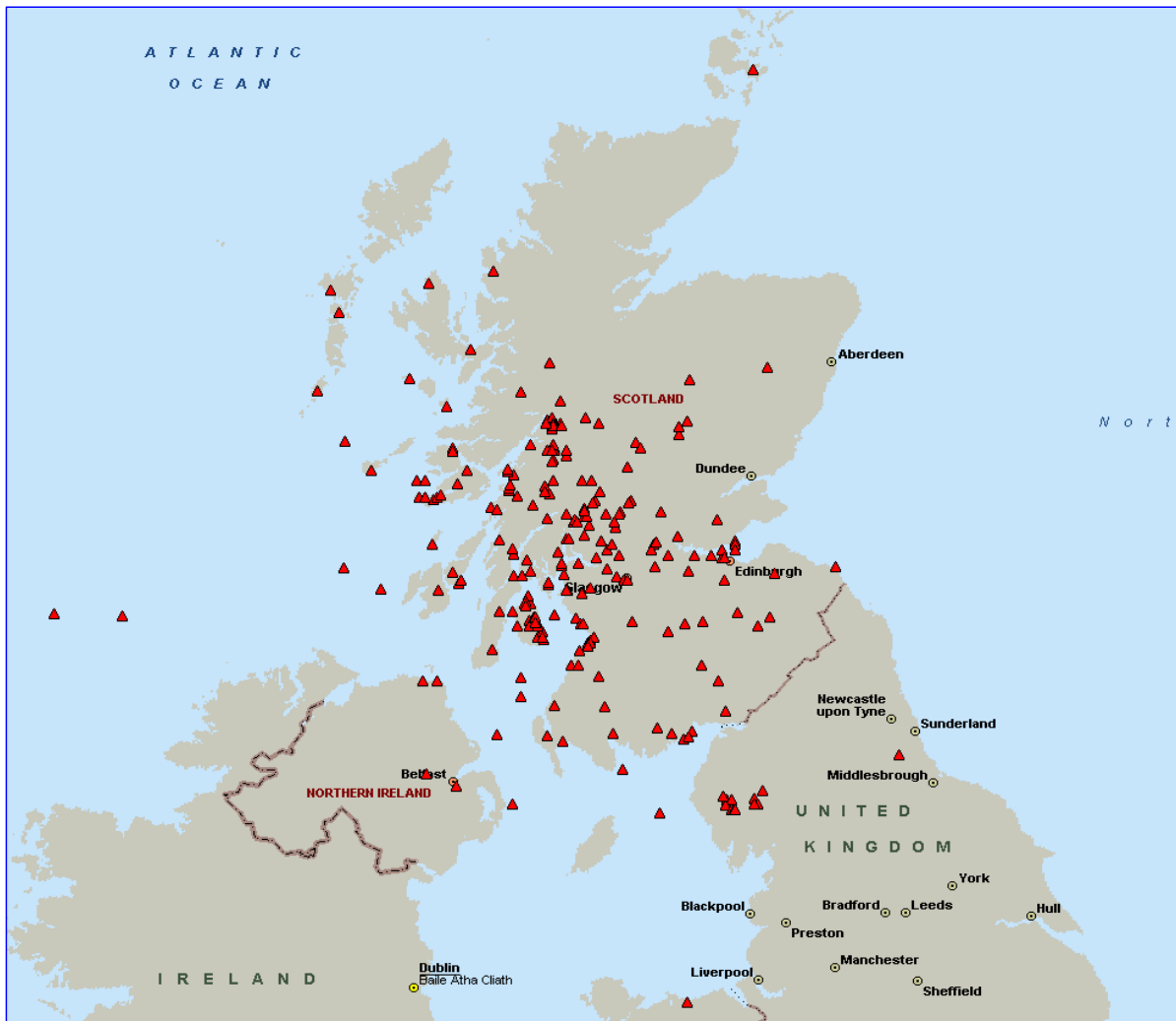
[Figure 46](#), [Figure 47](#) and [Figure 48](#) show the number of callouts from HMS Gannet on an annual, quarterly and monthly basis respectively. In common with most SAR units, HMS Gannet tends to see the peak of its activity during the warmer summer months.

[Figure 49](#) and [Figure 50](#) show the historic time series for callouts based on the groupings shown on [page 55](#) of this report.

[Table 36](#) shows the persons moved by HMS Gannet by assistance type between 2003 and 2012. There was a large increase in the number of persons Rescued and Search-rescued between 2011 and 2012. In fact, the number of persons Search-rescued in 2012 was greater than in 2009, 2010 and 2011 combined. There were a number of incidents in 2012 involving the Search-rescue of a large number of people, the most notable of which was the Search-rescue of 14 walkers in the Cairngorms in August.

## 10. HMS Gannet

Map 10 HMS Gannet Callouts, 2012



# 10. HMS Gannet

**Table 34 Callouts, Persons Moved, Flying Hours and Distance from base, 2003 to 2012**

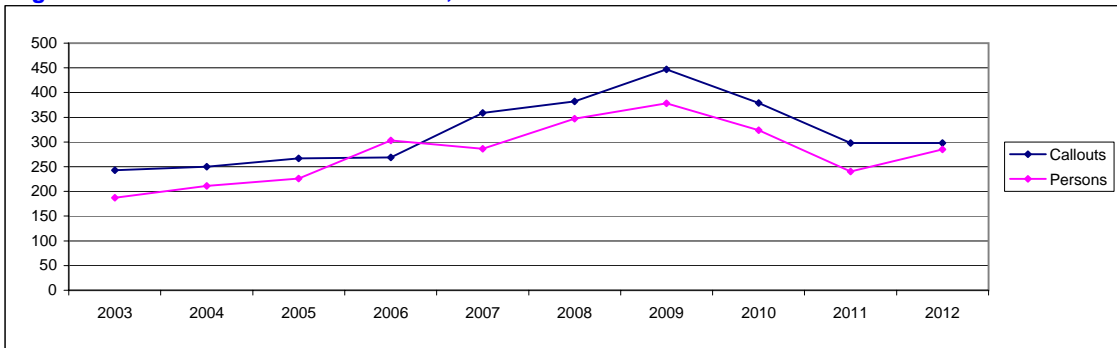
|      | Callouts | Persons | Average Flying Hours <sup>6</sup> | Average Distance from base |
|------|----------|---------|-----------------------------------|----------------------------|
| 2003 | 243      | 187     | 1.53                              | 57                         |
| 2004 | 250      | 211     | 2.02                              | 57                         |
| 2005 | 267      | 226     | 1.58                              | 59                         |
| 2006 | 269      | 303     | 1.55                              | 56                         |
| 2007 | 359      | 286     | 1.49                              | 51                         |
| 2008 | 382      | 347     | 1.38                              | 50                         |
| 2009 | 447      | 378     | 1.35                              | 55                         |
| 2010 | 379      | 324     | 1.33                              | 53                         |
| 2011 | 298      | 240     | 1.35                              | 53                         |
| 2012 | 298      | 285     | 1.56                              | 54                         |

6. Times are expressed in hours and minutes

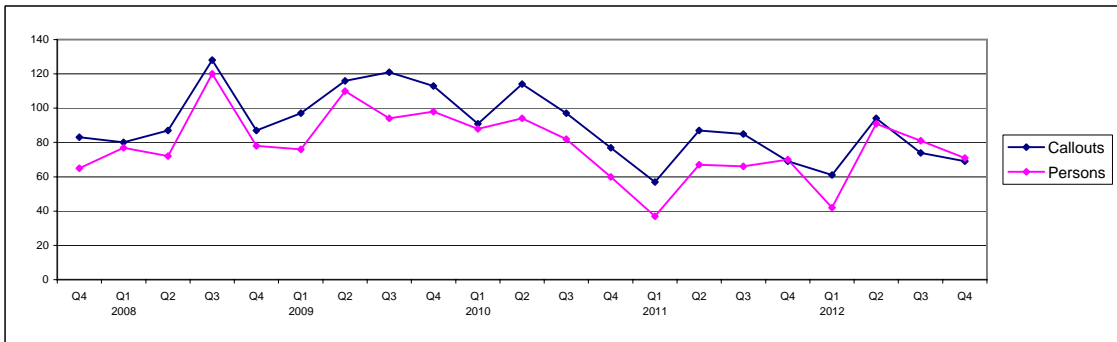
**Table 35 Callouts, Persons Moved, Flying Hours and Distance from Base, 2012**

|              | Callouts   | Persons    | Average Flying Hours <sup>6</sup> | Average Distance from base |
|--------------|------------|------------|-----------------------------------|----------------------------|
| January      | 28         | 21         | 2.04                              | 49                         |
| February     | 17         | 13         | 1.60                              | 53                         |
| March        | 16         | 8          | 1.44                              | 61                         |
| April        | 29         | 38         | 2.07                              | 75                         |
| May          | 39         | 36         | 1.48                              | 40                         |
| June         | 26         | 17         | 1.16                              | 52                         |
| July         | 20         | 22         | 2.02                              | 60                         |
| August       | 28         | 40         | 1.54                              | 58                         |
| September    | 26         | 19         | 2.12                              | 55                         |
| October      | 24         | 26         | 1.47                              | 55                         |
| November     | 21         | 17         | 2.15                              | 56                         |
| December     | 24         | 28         | 2.03                              | 49                         |
| <b>Total</b> | <b>298</b> | <b>285</b> | <b>1.56</b>                       | <b>54</b>                  |

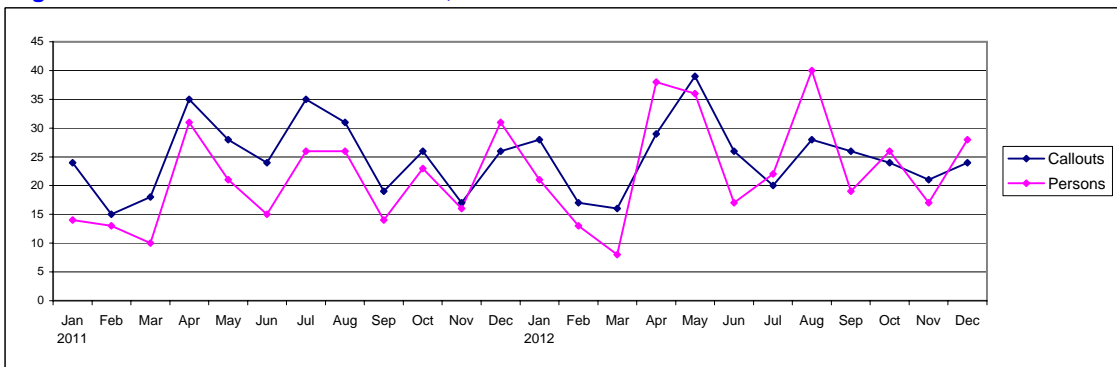
**Figure 46 Callouts and Persons Moved, 2003 to 2012**



**Figure 47 Callouts and Persons Moved, 2007 Q4 to 2012 Q4**



**Figure 48 Callouts and Persons Moved, 2011 to 2012**



## 10. HMS Gannet

Figure 49 Callouts by Callout Grouping, 2003 to 2012

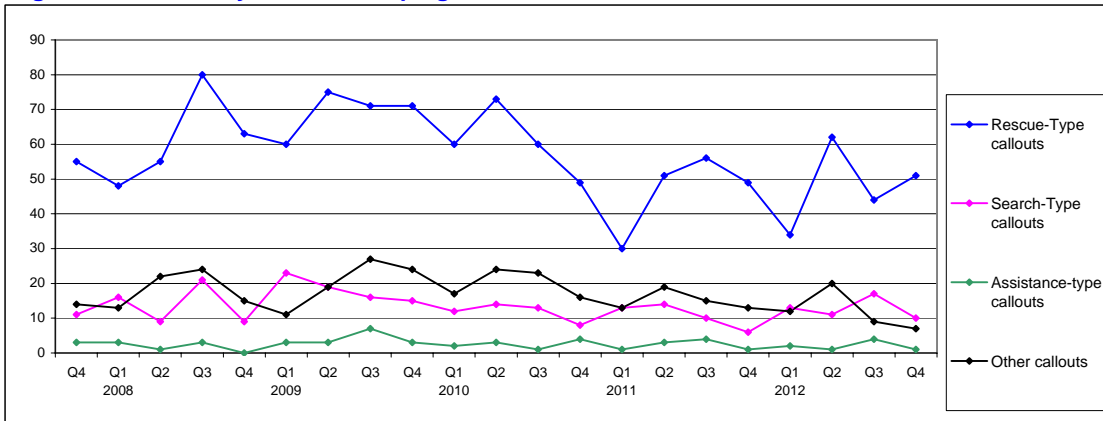


Figure 50 Callouts by Callout Grouping, 2007 Q4 to 2012 Q4

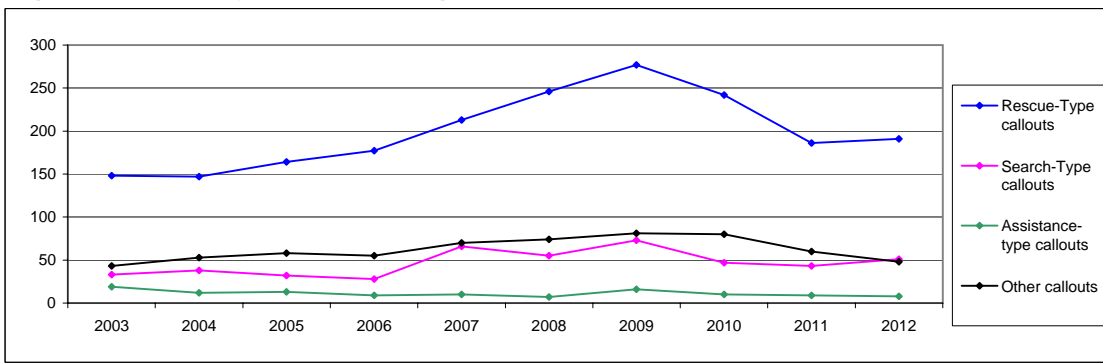


Table 36 Persons Moved by Assistance Type, 2003 to 2012

|                            | 2003       | 2004       | 2005       | 2006       | 2007       | 2008       | 2009       | 2010       | 2011       | 2012       |
|----------------------------|------------|------------|------------|------------|------------|------------|------------|------------|------------|------------|
| Rescue                     | 27         | 53         | 58         | 116        | 46         | 71         | 35         | 32         | 15         | 30         |
| Search-Rescue              | 0          | 0          | 0          | 0          | 15         | 15         | 28         | 12         | 8          | 50         |
| Medrescue                  | 101        | 95         | 114        | 116        | 122        | 136        | 181        | 164        | 133        | 121        |
| Search-Medrescue           | 0          | 0          | 0          | 0          | 9          | 15         | 17         | 18         | 13         | 6          |
| Medtransfer                | 49         | 53         | 37         | 62         | 86         | 107        | 96         | 89         | 68         | 64         |
| Recovery                   | 2          | 6          | 9          | 6          | 3          | 1          | 1          | 4          | 1          | 3          |
| Search-Recovery            | 0          | 0          | 0          | 0          | 1          | 0          | 5          | 0          | 0          | 4          |
| Transfer                   | 8          | 4          | 8          | 3          | 4          | 2          | 15         | 5          | 2          | 7          |
| <b>Total Persons Moved</b> | <b>187</b> | <b>211</b> | <b>226</b> | <b>303</b> | <b>286</b> | <b>347</b> | <b>378</b> | <b>324</b> | <b>240</b> | <b>285</b> |



## 11. Overseas Units

The RAF maintains SAR coverage from two overseas units - RAF Akrotiri in Cyprus, and RAF Mount Pleasant in the Falkland Islands. Further information is available at:

<http://www.raf.mod.uk/rafakrotiri/>

<http://www.raf.mod.uk/currentoperations/opsfalklands.cfm>

**Table 37** presents the number of callouts, persons moved, average flying hours and average distance travelled from base for Cyprus between 2003 and 2012. There was a large fall in callout numbers between 2011 and 2012, and there were zero persons recorded as being moved during the year. The average distance from base was also lower than in previous years, averaging 4 miles from the base. There were a number of incidents in the immediate vicinity of RAF Akrotiri, contributing to the low average distance travelled.

**Table 38** presents the number of callouts, persons moved, average flying hours and average distance travelled from base for Cyprus for each month of 2012.

**Figure 51**, **Figure 52** and **Figure 53** show the number of callouts from Cyprus on an annual, quarterly and monthly basis respectively. This is a fairly volatile series, with the number of callouts generally being low in any given month. A notable incident occurred in December 2011, when seven crew members were rescued from a tanker which had run aground. There has been a general downward trend in callout numbers over the past decade, with the exception of a spike in callout numbers in 2007.

**Table 39** presents the number of callouts, persons moved, average flying hours and average distance travelled from base for the Falkland Islands between 2003 and 2012. There was a large fall in callout numbers and persons moved between 2011 and 2012.

**Table 40** presents the number of callouts, persons moved, average flying hours and average distance from base for the Falkland Islands for each month of 2012.

**Figure 54**, **Figure 55** and **Figure 56** show the number of callouts from the Falkland Islands on an annual, quarterly and monthly basis respectively. This is a fairly volatile series, with the number of callouts generally being low in any given month.

# 11. Cyprus

**Table 37 Callouts, Persons Moved, Flying Hours and Distance from base, 2003 to 2012**

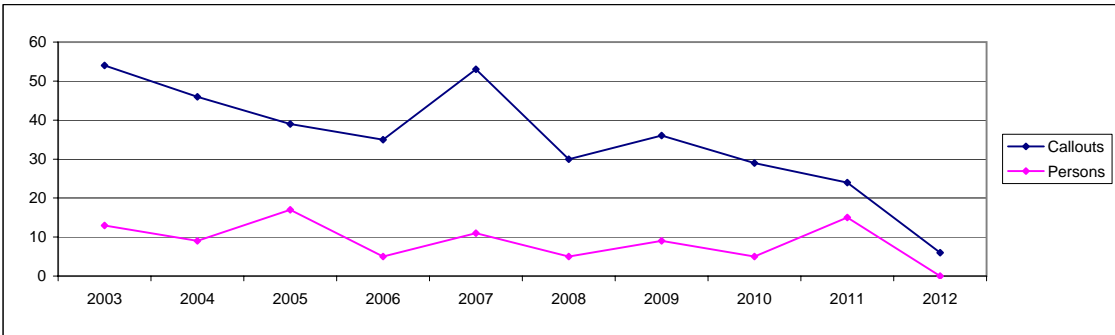
|      | Callouts | Persons | Average Flying Hours <sup>6</sup> | Average Distance from base |
|------|----------|---------|-----------------------------------|----------------------------|
| 2003 | 54       | 13      | 1.26                              | 18                         |
| 2004 | 46       | 9       | 1.38                              | 23                         |
| 2005 | 39       | 17      | 1.30                              | 26                         |
| 2006 | 35       | 5       | 1.41                              | 21                         |
| 2007 | 53       | 11      | 1.53                              | 23                         |
| 2008 | 30       | 5       | 3.05                              | 27                         |
| 2009 | 36       | 9       | 2.30                              | 35                         |
| 2010 | 29       | 5       | 2.16                              | 23                         |
| 2011 | 24       | 15      | 2.00                              | 27                         |
| 2012 | 6        | 0       | 1.23                              | 4                          |

6. Times are expressed in hours and minutes

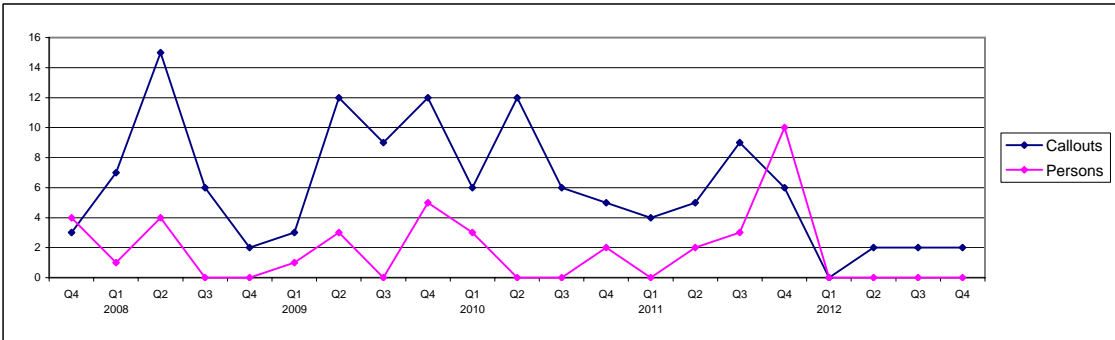
**Table 38 Callouts, Persons Moved, Flying Hours and Distance from Base, 2012**

|              | Callouts | Persons  | Average Flying Hours <sup>6</sup> | Average Distance from base |
|--------------|----------|----------|-----------------------------------|----------------------------|
| January      | 0        | 0        | 0.00                              | 0                          |
| February     | 0        | 0        | 0.00                              | 0                          |
| March        | 0        | 0        | 0.00                              | 0                          |
| April        | 2        | 0        | 1.30                              | 3                          |
| May          | 0        | 0        | 0.00                              | 0                          |
| June         | 0        | 0        | 0.00                              | 0                          |
| July         | 1        | 0        | 2.55                              | 1                          |
| August       | 1        | 0        | 0.25                              | 2                          |
| September    | 0        | 0        | 0.00                              | 0                          |
| October      | 1        | 0        | 1.48                              | 15                         |
| November     | 1        | 0        | 0.10                              | 3                          |
| December     | 0        | 0        | 0.00                              | 0                          |
| <b>Total</b> | <b>6</b> | <b>0</b> | <b>1.23</b>                       | <b>4</b>                   |

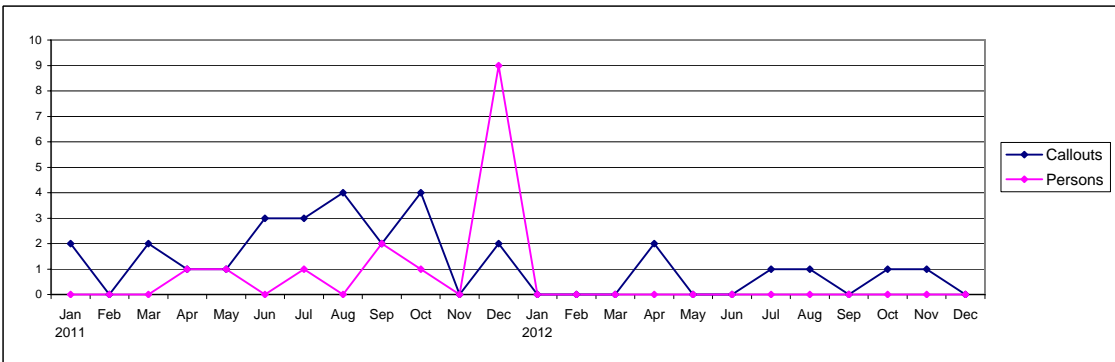
**Figure 51 Callouts and Persons Moved, 2003 to 2012**



**Figure 52 Callouts and Persons Moved, 2007 Q4 to 2012 Q4**



**Figure 53 Callouts and Persons Moved, 2011 to 2012**



# 11. Falklands

**Table 39 Callouts, Persons Moved, Flying Hours and Distance from base, 2003 to 2012**

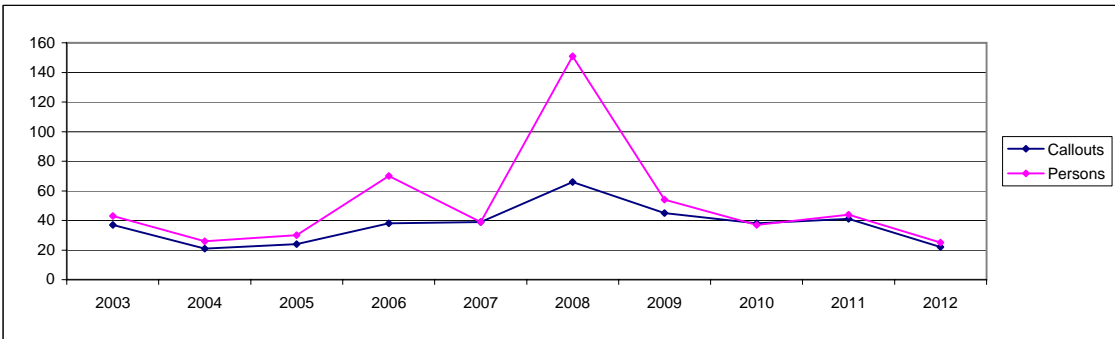
|      | Callouts | Persons | Average Flying Hours <sup>6</sup> | Average Distance from base |
|------|----------|---------|-----------------------------------|----------------------------|
| 2003 | 37       | 43      | 1.20                              | 35                         |
| 2004 | 21       | 26      | 1.43                              | 46                         |
| 2005 | 24       | 30      | 1.14                              | 42                         |
| 2006 | 38       | 70      | 1.26                              | 46                         |
| 2007 | 39       | 39      | 1.39                              | 33                         |
| 2008 | 66       | 151     | 1.38                              | 47                         |
| 2009 | 45       | 54      | 1.51                              | 57                         |
| 2010 | 38       | 37      | 2.07                              | 77                         |
| 2011 | 41       | 44      | 1.32                              | 28                         |
| 2012 | 22       | 25      | 1.28                              | 28                         |

6. Times are expressed in hours and minutes

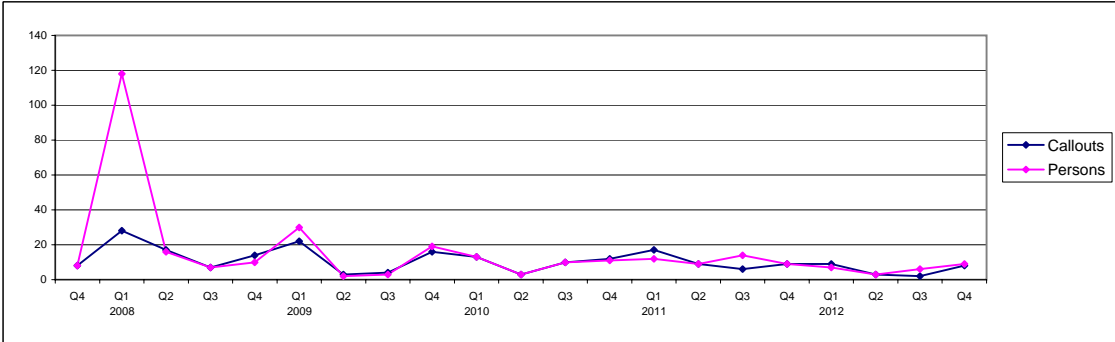
**Table 40 Callouts, Persons Moved, Flying Hours and Distance from Base, 2012**

|              | Callouts  | Persons   | Average Flying Hours <sup>6</sup> | Average Distance from base |
|--------------|-----------|-----------|-----------------------------------|----------------------------|
| January      | 0         | 0         | 0.00                              | 0                          |
| February     | 6         | 4         | 1.54                              | 33                         |
| March        | 3         | 3         | 1.17                              | 18                         |
| April        | 1         | 1         | 0.35                              | 0                          |
| May          | 1         | 1         | 0.40                              | 0                          |
| June         | 1         | 1         | 2.25                              | 75                         |
| July         | 0         | 0         | 0.00                              | 0                          |
| August       | 1         | 1         | 1.20                              | 15                         |
| September    | 1         | 5         | 1.50                              | 11                         |
| October      | 2         | 3         | 1.48                              | 34                         |
| November     | 3         | 3         | 0.32                              | 17                         |
| December     | 3         | 3         | 1.40                              | 50                         |
| <b>Total</b> | <b>22</b> | <b>25</b> | <b>1.28</b>                       | <b>28</b>                  |

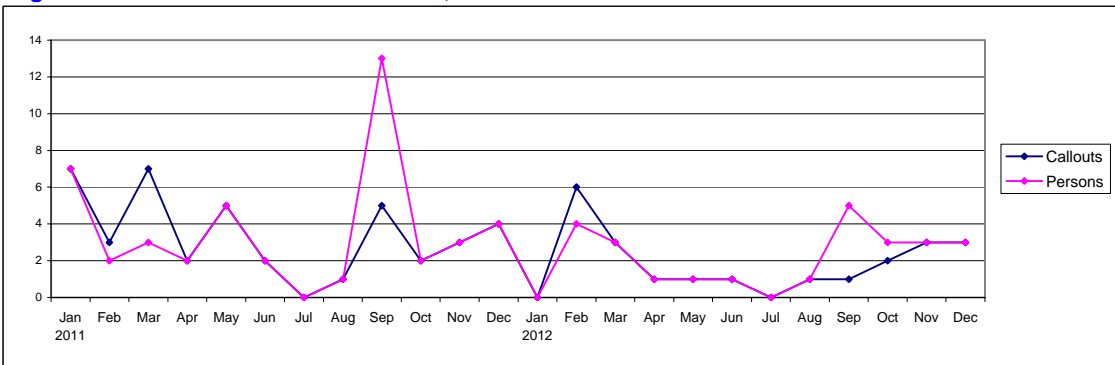
**Figure 54 Callouts and Persons Moved, 2003 to 2012**



**Figure 55 Callouts and Persons Moved, 2007 Q4 to 2012 Q4**



**Figure 56 Callouts and Persons Moved, 2011 to 2012**



## 12. Mountain Rescue Teams

The RAF has Mountain Rescue Teams (MRT) in four locations throughout the UK - RAF Lossiemouth, RAF Leuchars (located in Fife, Scotland), RAF Leeming (located in North Yorkshire) and RAF Valley. The unit at RAF Lossiemouth was previously based at RAF Kinloss - the unit relocated during July 2012.

Map 11 shows all MRT callouts during 2012.

Table 41 shows the number of callouts, persons moved and total man hours for each MRT unit during 2012. The number of persons moved by each MRT unit tends to be relatively low. MRT units often work in conjunction with helicopter units, to help locate casualties in difficult terrain. If the casualty is then transferred out by the helicopter unit, it is the helicopter unit who will be associated with the person moved in the report, rather than the MRT unit. MRT Lossiemouth (formerly MRT Kinloss) had the highest number of callouts during 2012.

Figure 57 and Figure 58 show historic time series for the total callouts, persons moved and man hours across all MRT units. The total man hours during 2012 was 11,521 - this was the highest for any year since 2001. There were a number of large incidents during 2012 involving multiple units searching for several days, which contributed to the large total for the year. This was particularly evident in Q4 when MRT Leuchars, MRT Valley and MRT Kinloss all spent over 1000 man hours searching for missing persons.

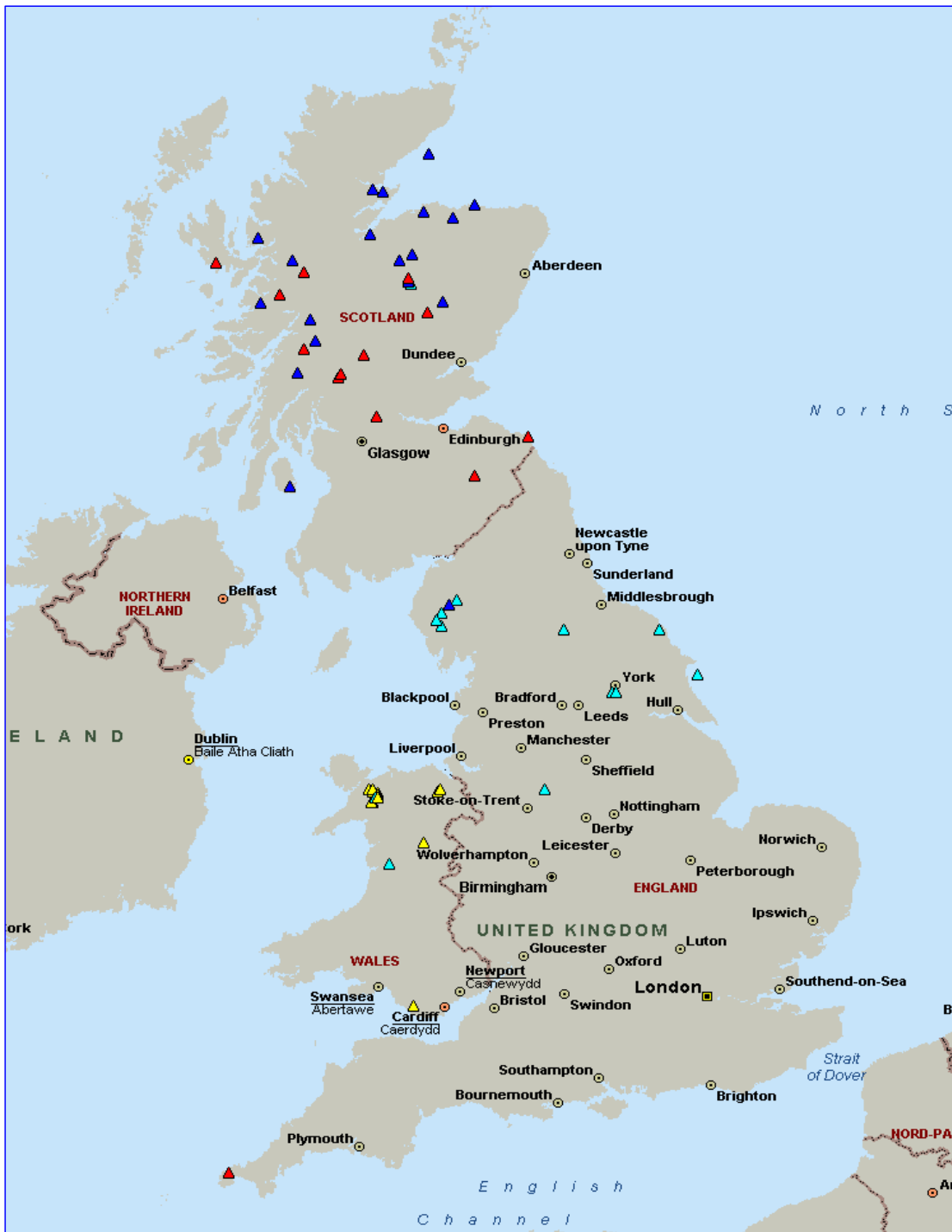
Figure 59 shows the annual callout numbers by unit between 2003 and 2012. Throughout much of this period MRT Lossiemouth (or the unit's previous location at Kinloss) has been the MRT unit with the highest number of callouts.

Figure 60, Figure 61, Figure 62 and Figure 63 show the number of callouts and man hours by unit over the past three years. MRT Lossiemouth (formerly MRT Kinloss) had a high number of man hours during 2012, as they responded to a number of large incidents involving several days of searching. In fact, for MRT Lossiemouth all four quarters of 2012 had a higher total man hours than for any quarter since 2009.

## 12. Mountain Rescue Teams

Map 11 Mountain Rescue Team Callouts, 2012

|                         |   |
|-------------------------|---|
| MRT Lossiemouth/Kinloss | ▲ |
| MRT Leeming             | ▲ |
| MRT Leuchars            | ▲ |
| MRT Valley              | ▲ |



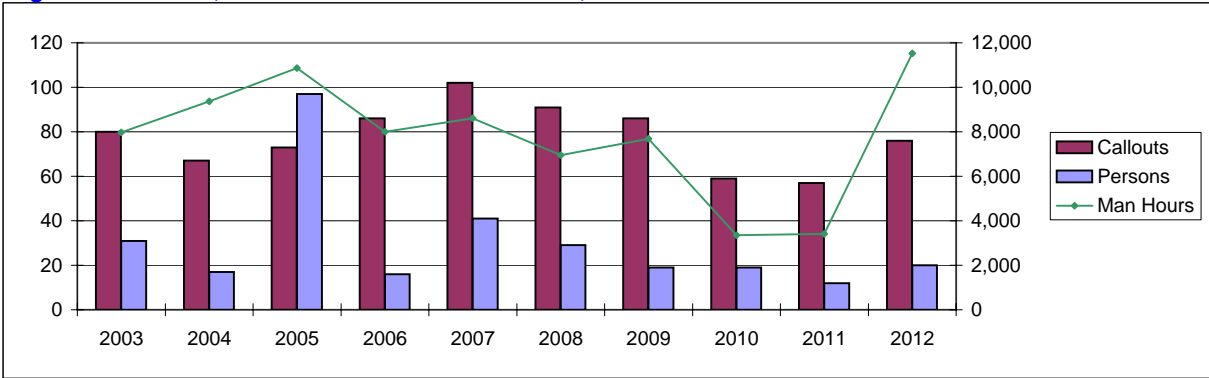
## 12. Mountain Rescue Teams

**Table 41 Callouts, Persons Moved and Man Hours, 2012**

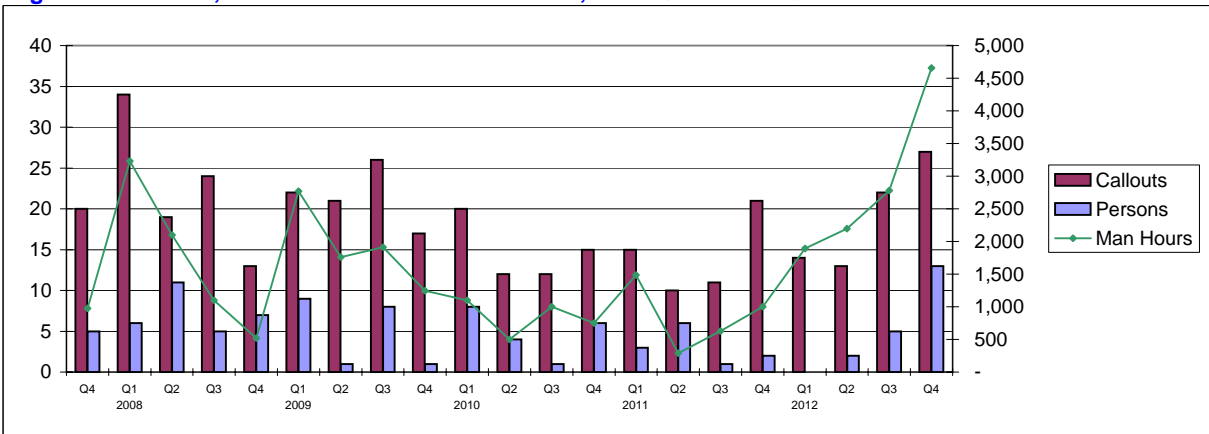
|                                  | Callouts | Persons | Man Hours |
|----------------------------------|----------|---------|-----------|
| Lossiemouth/Kinloss <sup>7</sup> | 26       | 4       | 6,158     |
| Leeming                          | 18       | 10      | 1,738     |
| Leuchars                         | 13       | 1       | 1,782     |
| Valley                           | 19       | 5       | 1,843     |

*7. A23 unit moved from Kinloss to Lossiemouth during July 2012*

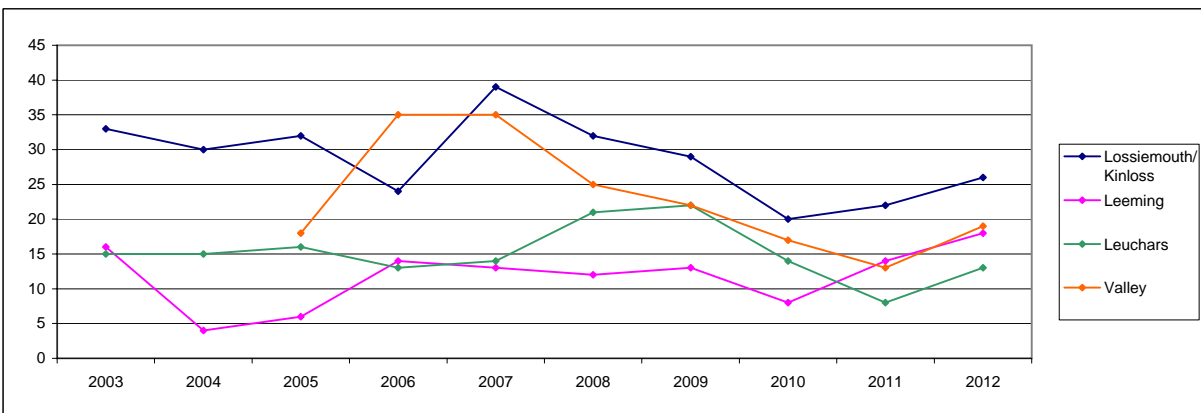
**Figure 57 Callouts, Persons Moved and Man Hours, 2003 to 2012**



**Figure 58 Callouts, Persons Moved and Man Hours, 2007 Q4 to 2012 Q4**



**Figure 59 Callouts by Unit, 2003 to 2012**



## 12. Mountain Rescue Teams

Figure 60 MRT Lossiemouth/Kinloss Callouts and Man Hours, 2007 Q4 to 2012 Q4

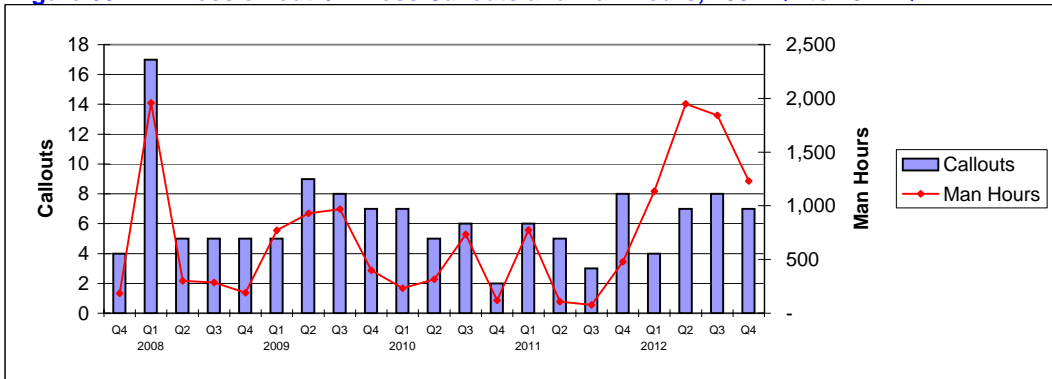


Figure 61 MRT Leeming Callouts and Man Hours, 2007 Q4 to 2012 Q4

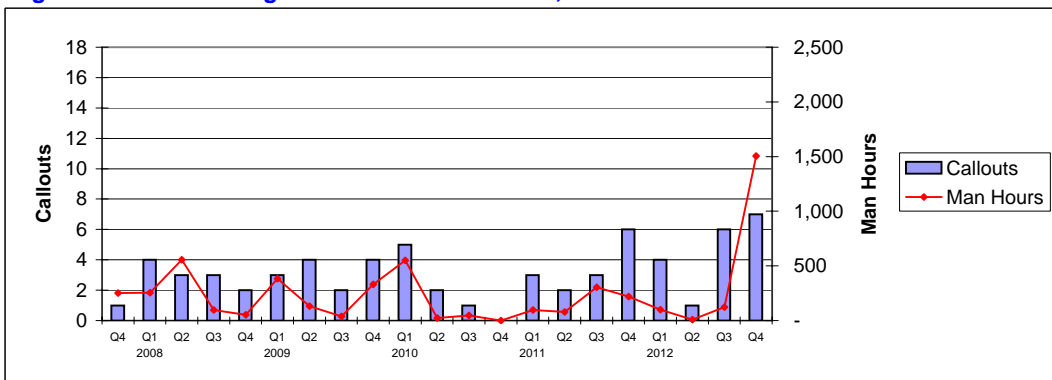


Figure 62 MRT Leuchars Callouts and Man Hours, 2007 Q4 to 2012 Q4

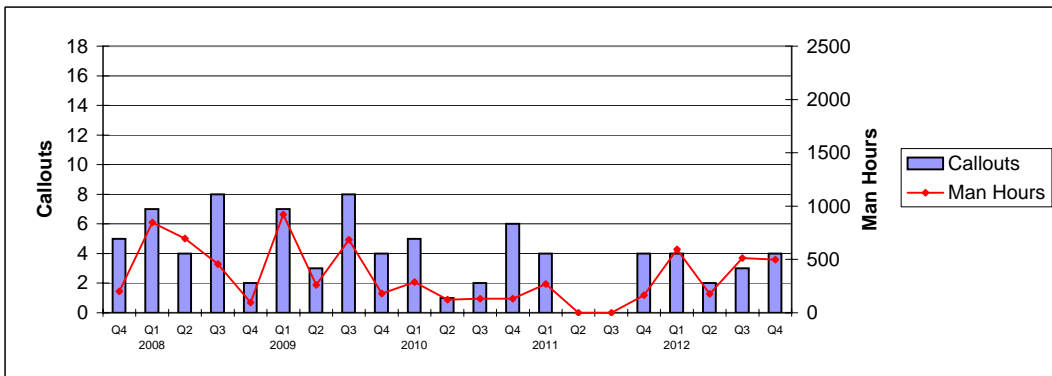
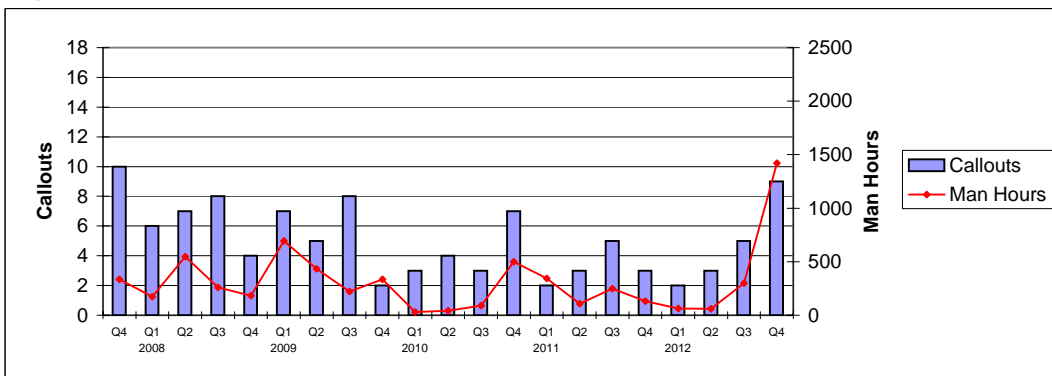


Figure 63 MRT Valley Callouts and Man Hours, 2007 Q4 to 2012 Q4



## 13. Other Search and Rescue

Previously the RAF used Nimrod aircraft to provide fixed wing coverage. These were primarily used to provide Top Cover communications support to SAR helicopters during incidents. The Nimrods were withdrawn from service in March 2010.

[Table 42](#) presents fixed wing callouts from 2003 onwards. [Figure 64](#) shows this data graphically.

In addition to the eight military aeronautical SAR units, additional aeronautical SAR coverage is provided by four Maritime and Coastguard Agency (MCA) helicopter units. Although these are not part of the military SAR service, the MCA helicopters are coordinated by the ARCC at Kinloss Barracks, to provide integrated coverage across the UK.

[Table 43](#) presents the number of callouts for each Maritime & Coastguard Agency (MCA) helicopter unit during 2012. Lee-on-Solent was the MCA unit with the highest number of callouts during 2012. Since 2003 they have usually attracted the most callouts of all four MCA units.

[Figure 65](#) presents the quarterly callout numbers for each unit over the past four years. MCA callout numbers follow a similar seasonal pattern to the military SAR callouts, with peak activity occurring during the warmer summer months.

[Figure 66](#) presents the annual callout numbers for each unit over the past ten years. The 2012 callouts numbers for Lee-on-Solent, Shetland and Stornoway were all broadly in line with the long term average over the past decade, while the callout numbers for Portland were lower than the historical average. Since 2003 Lee-on-Solent has usually attracted the most callouts of all four MCA units.

The MCA data is provided directly by the MCA, and is not produced by the Ministry of Defence. The Ministry of Defence has not assessed the quality of the statistics, and the MCA tables in this report are not designated as National Statistics. The data is published to provide extra context.

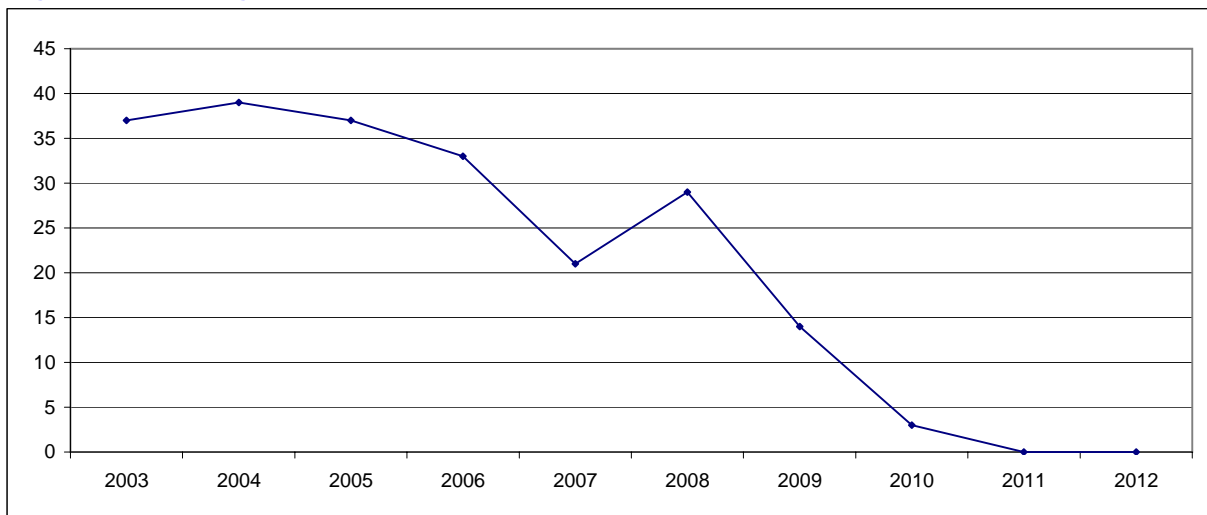


### 13. Other Search and Rescue - Fixed Wing

Table 42 Fixed Wing Callouts, 2003 to 2012

|      | Total UK Callouts | Nimrod | Other Fixed Wing |
|------|-------------------|--------|------------------|
| 2003 | 37                | 37     | 0                |
| 2004 | 39                | 37     | 2                |
| 2005 | 37                | 37     | 0                |
| 2006 | 33                | 32     | 1                |
| 2007 | 21                | 21     | 0                |
| 2008 | 29                | 29     | 0                |
| 2009 | 14                | 13     | 1                |
| 2010 | 3                 | 3      | 0                |
| 2011 | 0                 | 0      | 0                |
| 2012 | 0                 | 0      | 0                |

Figure 64 Fixed Wing Callouts, 2003 to 2012



### 13. Other Search and Rescue - Maritime and Coastguard Agency

Source: Maritime & Coastguard Agency.

Please note that these figures are provisional and subject to audit.

The following tables are provided by other bodies and are not designated as National Statistics. The Department has not assessed the quality of these statistics. They are published to provide extra context.

Table 43 Maritime and Coastguard Agency Callouts, 2012

|              | Lee-on-Solent | Shetland   | Portland   | Stornoway  | Total      |
|--------------|---------------|------------|------------|------------|------------|
| January      | 13            | 3          | 12         | 9          | 37         |
| February     | 12            | 11         | 9          | 10         | 42         |
| March        | 9             | 9          | 6          | 8          | 32         |
| April        | 14            | 12         | 9          | 10         | 45         |
| May          | 21            | 14         | 13         | 15         | 63         |
| June         | 29            | 7          | 16         | 12         | 64         |
| July         | 25            | 8          | 32         | 16         | 81         |
| August       | 24            | 8          | 28         | 25         | 85         |
| September    | 12            | 6          | 18         | 13         | 49         |
| October      | 19            | 9          | 8          | 10         | 46         |
| November     | 13            | 6          | 3          | 8          | 30         |
| December     | 14            | 11         | 9          | 9          | 43         |
| <b>Total</b> | <b>205</b>    | <b>104</b> | <b>163</b> | <b>145</b> | <b>617</b> |

Figure 65 Maritime and Coastguard Agency Callouts, 2007 Q4 to 2012 Q4

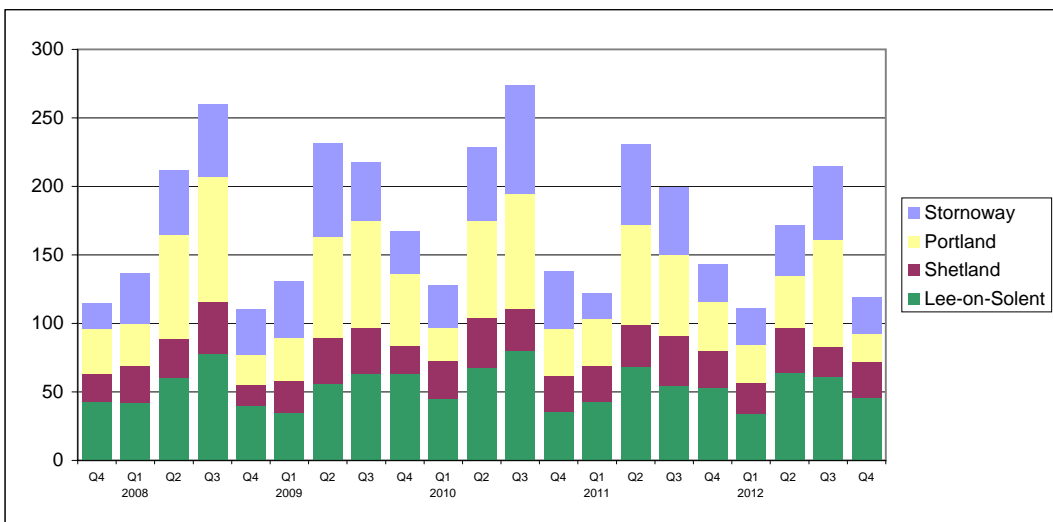
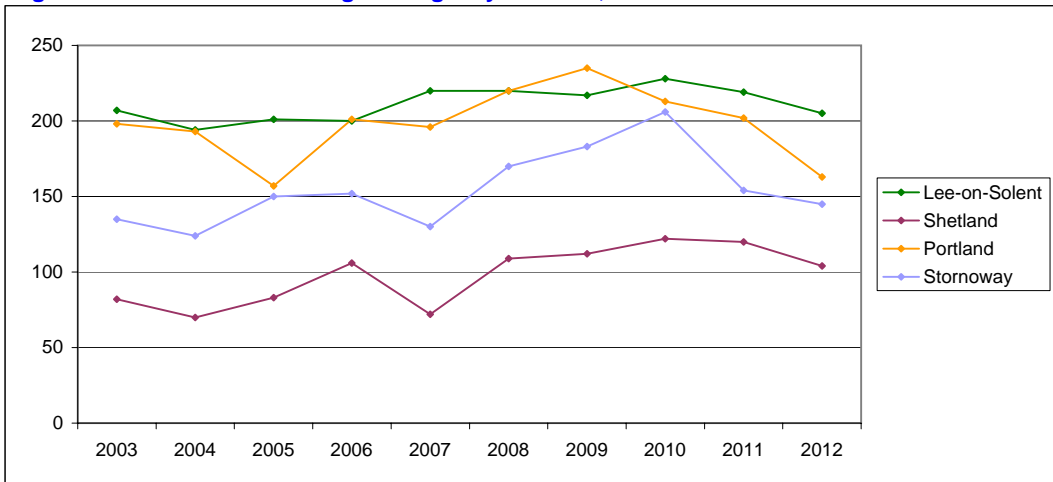


Figure 66 Maritime and Coastguard Agency Callouts, 2003 to 2012



## 14. Search and Rescue definitions

|                    |  | <b>GROUPING</b> |
|--------------------|--|-----------------|
| RESCUE             | Transfer of distressed uninjured person(s) from a hostile to a benign environment.   | Rescue-Type     |
| MEDRESCUE          | Transfer of sick or injured persons(s) from a hostile environment to a recognised medical facility (eg, hospital or chamber).  | Rescue-Type     |
| TRANSFER           | Transfer of military personnel, or their families, on compassionate grounds.   | Rescue-Type     |
| MEDTRANSFER        | Transfer of patients or organs between medical establishments at the request of a recognised Medical Authority, i.e. NHS Trust, Hospital or Ambulance Authority.   | Rescue-Type     |
| RECOVERY           | Recovery of person(s) apparently dead.   | Rescue-Type     |
| SEARCH             | Search for craft, person(s), etc which does not result in moving a person.   | Search-Type     |
| SEARCH – RESCUE    | Search for craft, person(s), etc resulting in the rescue of an uninjured person.   | Search-Type     |
| SEARCH – MEDRESCUE | Search for craft, person(s), etc resulting in the rescue of a sick/injured casualty.   | Search-Type     |
| SEARCH – ASSIST    | Search for craft, person(s), etc involving assistance to other SAR assets.   | Search-Type     |
| SEARCH – RECOVERY  | Search for craft, person(s), etc resulting in the recovery of person(s) apparently dead.   | Search-Type     |
| SEARCH – ABORT     | Search for craft, person(s), etc during which callout terminated due to eg malfunction or adverse weather.   | Search-Type     |
| TOP-COVER          | On-scene assistance, e.g. communications relay, target identification, vectoring to target etc. for another rescue asset, or as cover for person(s) or vessel(s) in distress that does not result in further intervention. | Assistance-Type |
| PRECAUTION         | Pre-positioning of a SAR helicopter to provide faster response to an anticipated or potential incident, eg, in response to an aircraft declaring a "MAYDAY" or a potential incident on a offshore installation.            | Assistance-Type |
| ASSIST             | Assistance to other SAR assets etc, such as moving SAR personnel or equipment (eg, mountain rescue teams, divers, pumps), shepherding of aircraft etc.   | Assistance-Type |
| CIVIL AID          | Military Aid to the Civil Community (eg fire control).   | Assistance-Type |
| RECALLED           | Asset recalled from incident whilst en route.  | Other           |
| NOT REQUIRED       | Asset arrived on scene but no action required.   | Other           |
| ABORT              | Callout terminated due to eg malfunction or adverse weather.   | Other           |
| FALSE ALARM        | Unnecessary callout with good intent.  | Other           |
| HOAX               | Unnecessary callout with malicious intent  | Other           |