



# First Release

17<sup>th</sup> February 2010  
IFD170210SSFEB10

Coverage: Great Britain (unless otherwise stated)

Theme: People and Places

## DWP QUARTERLY STATISTICAL SUMMARY

*This Statistical Summary aims to give users a structured overview of the National Statistics published by the Department for Work and Pensions (DWP). Statistics are grouped by component area of DWP and, for each statistic, links are given for users to access more detailed information.*

*Key benefit statistics and New Deal statistics from 100% sources are available on an internet-based tabulation tool. A similar tabulation tool derived from 5% sample data is also available, however wherever possible 100% data should be used in preference to 5% estimates, as they are more accurate and form DWP's headline statistics. Data is also released via the NOMIS website and the Neighbourhood Statistics website.*

The latest National Statistics on benefit claimants, employment programmes, labour market decisions and vacancies produced by DWP were released on 17<sup>th</sup> February 2010 according to the arrangements approved by the UK Statistics Authority. Not all DWP National Statistics are covered by this release. Some statistics have their own first releases, but links to these are given throughout.

### Key Findings

- There were 5.9 million working age benefit claimants at August 2009. This is an increase of 663 thousand in the year to August 2009.
- Employment and Support Allowance (ESA) was introduced on 27<sup>th</sup> October 2008. There were around 374 thousand people claiming Employment and Support Allowance at the end of August 2009.
- The number of working age claimants of ESA and incapacity benefits totals 2.63 million in August 2009. This figure is 42 thousand higher than August 2008.
- The number of lone parents claiming Income Support (IS) decreased by 29 thousand to 716 thousand in the year to August 2009.
- At November 2009, the total number of people claiming Housing Benefit was 4.6 million, with 5.6 million claiming Council Tax Benefit.
- 3.56 million people had started on a New Deal programme up to November 2009. At August 2009 2.25 million people have gained a job through the New Deal programme, with 116 thousand people gaining a job through Employment Zones up to October 2009.
- At August 2009, there were 12.6 million people of state pension age claiming a DWP benefit, an increase of 243 thousand since August 2008. Of these, 66% were claiming State Pension (SP) only.
- At August 2009, there were 12.4 million claimants of State Pension (SP), a rise of 252 thousand on a year earlier. Of these, 38% were male and 62% female.
- At August 2009, there were 2.74 million claimants of Pension Credit (PC) (3.35 million including partners), a rise of 7 thousand on the previous quarter. Of these, 936 thousand claimed Guarantee Credit only, 1.2 million claimed Guarantee and Savings Credit, and 602 thousand were claiming Savings Credit only.
- At the end of December 2009, the total Child Support Agency (CSA) live and assessed caseload stood at 1.21 million cases, of which 57% were current scheme cases.



#### Issued by:

Information Directorate  
Department for Work and Pensions

Telephone:  
Press Office: 0203 267 5144

Website:  
[www.dwp.gov.uk](http://www.dwp.gov.uk)

#### Statistician:

Stuart Grant  
Information Directorate  
Department for Work and Pensions  
Room BP5201  
Benton Park Road  
Longbenton  
Newcastle upon Tyne  
NE98 1YX

Telephone:  
Email: 0191 216 6263  
[stuart.grant@dwp.gsi.gov.uk](mailto:stuart.grant@dwp.gsi.gov.uk)

**Next publication:**  
May 2010

- At August 2009, there were 3.10 million recipients of Disability Living Allowance (DLA), 520 thousand recipients of Carer's Allowance (CA), and 1.61 million recipients of Attendance Allowance (AA).

**Experimental statistics on benefit flows show:**

- There were 677 thousand new claims to working age Employment and Support Allowance and incapacity benefits, 428 thousand new claims to Income Support (IS), 27 thousand new claims to Bereavement Benefit/Widows Benefit (BB/WB) and 705 thousand new claims to State Pension (SP) in the year to August 2009.
- There were 599 thousand benefit exits for working age Employment and Support Allowance and incapacity benefits, 578 thousand for Income Support (IS), 42 thousand for Bereavement Benefit/Widows Benefit (BB/WB) and 501 thousand benefit exits for State Pension (SP) in the year to August 2009.
- There were 263 thousand new claims to PC in the year 2008/2009.

**Experimental statistics on early estimates show:**

- At the end of December 2009, the working age Income Support lone parents (ISLP) early estimate was 695 thousand.
- At the end of December 2009, the Employment and Support Allowance and incapacity benefits (ESA/IB) early estimate is 2.615 million.



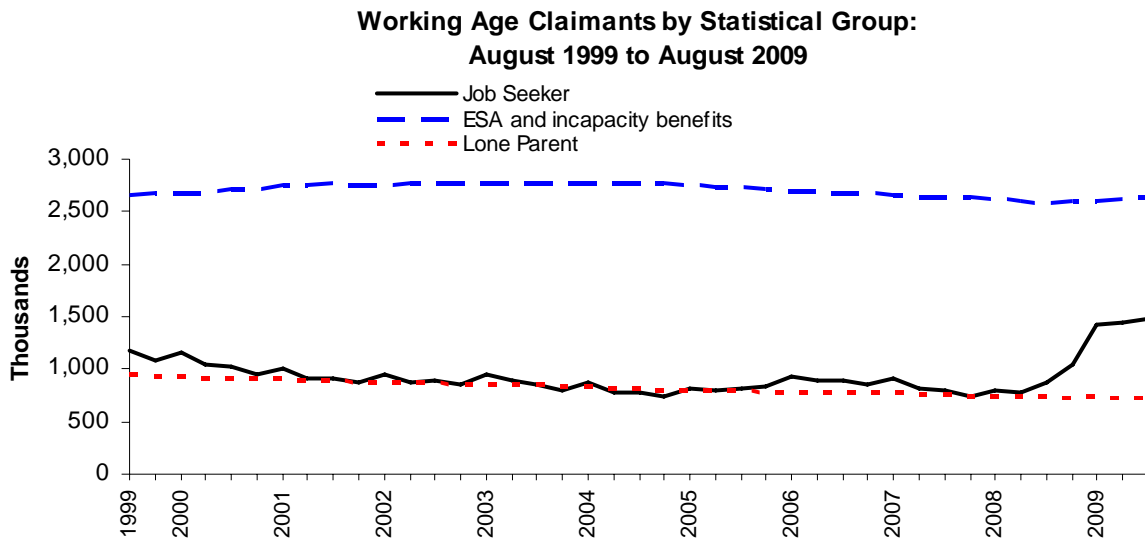
## Contents

<b>1. Working Age</b>	
	<i>Page</i>
1.1 Working age Client Group	4
Individual Benefits	
1.2 Jobseeker's Allowance	7
1.3 Incapacity Benefit & Severe Disablement Allowance	8
1.4 Employment and Support Allowance	8
1.5 Income Support	10
1.6 Housing Benefit	11
1.7 Council Tax Benefit	11
1.8 Widow's Benefit & Bereavement Benefit	12
1.9 Jobseeker's Allowance sanctions and disallowances	13
1.10 New Deals & Employment Zones	14
1.11 Vacancies handled by Jobcentre Plus	15
<b>2. Early Estimates for Working Age Inactive Benefit Client Group</b>	
2.1 Employment and Support Allowance / incapacity benefits (ESA/IB) client group	16
2.2 Income Support Lone Parent (ISLP) client group	17
<b>3. Pensioners</b>	
3.1 Pensioner Client Group	18
Individual Benefits	
3.2 State Pension	19
3.3 Pension Credit	20
<b>4. Disabled and Carers</b>	
4.1 Disability Living Allowance	21
4.2 Attendance Allowance	21
4.3 Carer's Allowance	22
4.4 Industrial Injuries Disablement Benefit	23
<b>5. Families &amp; Children</b>	
5.1 Child Support Agency cases	24
Notes to Editors	26

## 1. Working Age

### 1.1 Working Age client group

Combines data collected for Jobseeker's Allowance, Incapacity Benefit, Employment and Support Allowance, Severe Disablement Allowance, Disability Living Allowance, Carer's Allowance, Widow's Benefit, Bereavement Benefit and Income Support for working age claimants (including Pension Credit for males aged 60 to 64).



Between August 1999 and August 2008, the number of jobseekers in GB fell from 1.18 million to 869 thousand. However, it has risen to almost 1.49 million at August 2009. The preferred source of JSA figures is the ONS claimant count measure (which is seasonally adjusted).

The lone parent caseload fell from 945 thousand to 716 thousand between August 1999 and August 2009.

The number of working age claimants of Employment and Support Allowance (ESA) and incapacity benefits totals 2.63 million in August 2009. This shows a year-on-year increase of 42 thousand.

Headline figures for Incapacity Benefit and Severe Disablement Allowance are shown in Table 1.2 and differ to figures shown in Table 1.1 due to the inclusion of ESA in Table 1.1.

**Table 1.1 Working Age claimants by Statistical Group: August 1999 – August 2009**

	Total	Job Seeker <sup>2</sup>	Employment and Support Allowance and incapacity benefits <sup>3</sup>	Lone Parent <sup>4</sup>	Carer <sup>5</sup>	Other Income Related <sup>6</sup>	Disabled <sup>7</sup>	Thousands Bereaved <sup>8</sup>
Aug -99	..	1,181.86	2,655.38	945.06	316.13	221.31	..	..
Nov -99	..	1,083.03	2,674.71	930.24	316.50	218.37	..	..
Feb -00	..	1,154.97	2,676.39	923.47	313.58	216.97	..	..
May -00	..	1,037.01	2,686.30	919.43	310.88	210.80	..	..
Aug -00	..	1,015.83	2,714.85	920.10	309.67	197.95	..	..
Nov -00	..	948.66	2,722.57	905.76	311.56	196.69	..	..
Feb -01	..	1,001.08	2,750.45	908.21	313.96	182.81	..	..
May -01	..	909.15	2,753.66	900.43	319.59	180.15	..	..
Aug -01	..	907.68	2,763.62	900.22	323.83	175.41	..	..
Nov -01	..	880.36	2,746.02	878.59	328.62	179.08	..	..
Feb -02	..	955.45	2,745.58	877.11	332.02	176.62	..	..
May -02	<b>5,455.75</b>	877.38	2,765.73	870.95	335.79	165.60	245.27	195.02
Aug -02	<b>5,481.48</b>	890.54	2,769.36	875.04	339.91	167.19	249.72	189.71
Nov -02	<b>5,428.63</b>	850.05	2,776.56	856.23	343.72	161.36	256.58	184.13
Feb -03	<b>5,514.28</b>	946.16	2,776.54	848.85	346.17	156.33	260.92	179.32
May -03	<b>5,459.68</b>	885.78	2,773.61	855.81	347.94	155.96	266.25	174.33
Aug -03	<b>5,425.85</b>	851.37	2,777.06	851.73	350.41	155.26	270.15	169.88
Nov -03	<b>5,363.74</b>	803.88	2,780.49	831.75	353.25	154.20	275.51	164.67
Feb -04	<b>5,426.42</b>	867.42	2,777.53	830.25	355.81	155.20	280.13	160.09
May -04	<b>5,327.35</b>	777.40	2,772.85	823.27	359.25	155.42	283.33	155.83
Aug -04	<b>5,321.26</b>	769.25	2,774.93	818.10	360.08	158.20	289.12	151.59
Nov -04	<b>5,270.77</b>	741.06	2,772.18	796.53	361.42	157.94	294.15	147.49
Feb -05	<b>5,327.77</b>	819.68	2,757.65	793.13	362.04	153.93	297.23	144.11
May -05	<b>5,289.13</b>	800.66	2,741.62	789.32	363.76	151.09	300.96	141.73
Aug -05	<b>5,302.72</b>	825.11	2,725.47	789.35	365.08	153.71	305.84	138.17
Nov -05	<b>5,287.66</b>	836.71	2,710.50	778.56	363.34	155.74	309.31	133.51
Feb -06	<b>5,384.74</b>	935.20	2,705.47	777.10	368.66	153.06	313.85	131.40
May -06	<b>5,325.77</b>	895.88	2,688.02	774.86	368.50	152.70	317.04	128.78
Aug -06	<b>5,335.22</b>	900.92	2,683.00	783.19	369.81	153.12	319.13	126.06
Nov -06	<b>5,288.35</b>	860.22	2,672.97	775.62	371.71	161.10	326.64	120.09
Feb -07	<b>5,321.68</b>	904.04	2,662.13	771.35	373.83	163.32	329.75	117.26
May -07	<b>5,207.27</b>	807.27	2,643.21	765.62	374.84	167.05	335.14	114.15
Aug -07	<b>5,187.14</b>	788.45	2,641.11	763.55	376.03	167.84	340.61	109.55
Nov -07	<b>5,124.68</b>	741.10	2,641.70	741.83	379.35	167.29	346.16	107.25
Feb -08	<b>5,174.88</b>	806.70	2,617.88	741.71	384.49	169.95	349.38	104.78
May -08	<b>5,142.63</b>	787.87	2,595.83	738.64	387.56	173.33	356.50	102.90
Aug -08	<b>5,232.88</b>	868.73	2,590.61	744.68	392.73	176.23	360.08	99.81
Nov -08	<b>5,404.12</b>	1,036.48	2,605.51	728.98	396.80	178.84	360.47	97.04
Feb -09	<b>5,802.48</b>	1,421.60	2,603.54	736.04	400.12	181.88	363.82	95.49
May -09	<b>5,836.50</b>	1,443.00	2,621.43	720.48	405.56	183.22	368.94	93.87
Aug -09	<b>5,895.65</b>	1,485.32	2,632.74	715.73	412.97	184.46	373.10	91.33

**Notes:**

See page 6 for notes on Table 1.1



### **Notes relating to Table 1.1**

1. *Claimants have been assigned to a statistical group according to a hierarchy. The order is shown in the table, i.e. 'Job Seekers' followed by 'Employment and Support Allowance and incapacity benefits'.*
2. *'Job Seekers' are recipients of Job Seeker's Allowance.*
3. *'From November 2008 the "incapacity benefits group" includes Employment and Support Allowance (ESA). ESA replaced Incapacity Benefit and Income Support paid on the grounds of incapacity for new claims from 27th October 2008. Prior to this the "incapacity benefits group" referred to claimants of Incapacity Benefit (including credits only) or Severe Disablement Allowance including people claiming IS on the grounds of Incapacity.*
4. *'Lone Parents' are single recipients of Income Support with a child under 16.*
5. *'Carers' are recipients of Carers Allowance.*
6. *'Others on Income Related Benefit' are other recipients of Income Support (including Income Support Disability Premium) or Pension Credit.*
7. *'Disabled' are recipients of Disability Living Allowance. Industrial Injuries benefits data is not available.*
8. *'Bereaved' are recipients of Widow's Benefit or Bereavement Benefit.*
9. *Totals are not shown prior to May 2002 as Disability Living Allowance data is not available. Also means that complete data for 'Disabled' and 'Bereaved' statistical groups are not available either.*
10. *HB/CTB data are not included in the client group hierarchy but are published separately (see page 11).*

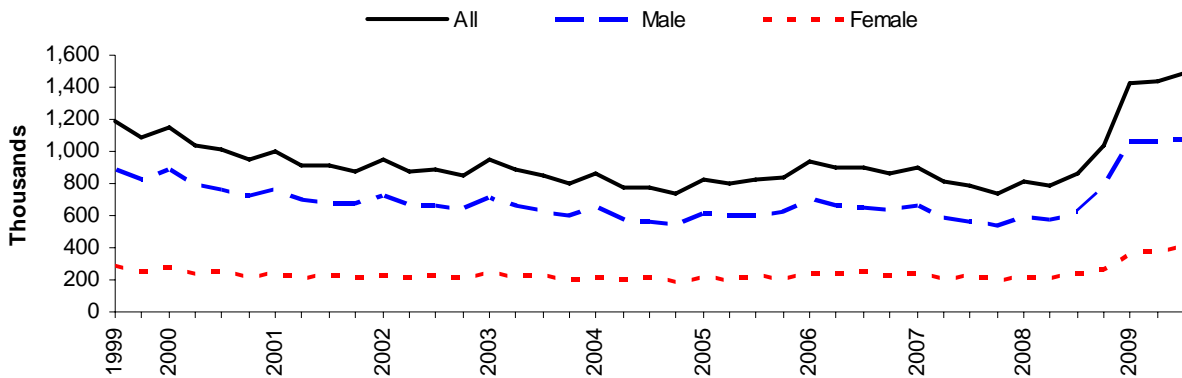
Latest statistical data available from: <http://statistics.dwp.gov.uk/asd/tabtool.asp>



## 1.2 Jobseeker's Allowance

Jobseeker's Allowance (JSA) was introduced on 7th October 1996 and has both contributory and income-related elements. It is paid to people under state pension age who are available for and actively seeking work of at least forty hours per week.

**Jobseekers Allowance by Gender: August 1999 to August 2009**



The preferred source of JSA figures is the ONS claimant count measure (which is seasonally adjusted).

DWP produce a separate set of Jobseeker's Allowance figures to enable cross-benefit analysis and supply a wider range of breakdowns, and these are provided in this release.

The DWP figures at August 2009 show the total number of Jobseeker's Allowance claimants was almost 1.49 million. Female claimants represented 28% of the JSA caseload (412 thousand), while males represented 72% (1,073 thousand). The total caseload has risen by 617 thousand since August 2008.

Latest statistical data available from: <http://statistics.dwp.gov.uk/asd/tabtool.asp>

### 1.3 Incapacity Benefit and Severe Disablement Allowance

Incapacity benefits consist of Incapacity Benefit (introduced on 13th April 1995 and paid to people who are incapable of work and who have paid sufficient contributions throughout their working life) and Severe Disablement Allowance (SDA). From 27th October 2008, Employment & Support Allowance (ESA) replaced Incapacity Benefit and Income Support paid on the grounds of incapacity for new claims. **Please note claimants of ESA are not included in figures in Section 1.3 or in Table 1.2.**

At August 2009, there were 2.26 million working age claimants of incapacity benefits (Incapacity Benefit or Severe Disablement Allowance), a decrease of 332 thousand on a year earlier. 58% of claimants were men and 42% women. Both the male and female caseloads are now falling: males by 193 thousand and females by 138 thousand in the year to August 2009.

At August 2009, 62% (1.39 million) of working age claimants were beneficiaries (i.e. were paid Incapacity Benefit or Severe Disablement Allowance), with the remaining 864 thousand receiving National Insurance Credits, many of whom also receive Income Support. A further 41 thousand were claimants above state pension age: these were almost all recipients of Severe Disablement Allowance.

In the year to August 2009, there were a total of 156 thousand new claims for working age incapacity benefits and 449 thousand claims were closed.

Latest statistical data available from: <http://statistics.dwp.gov.uk/asd/tabtool.asp>

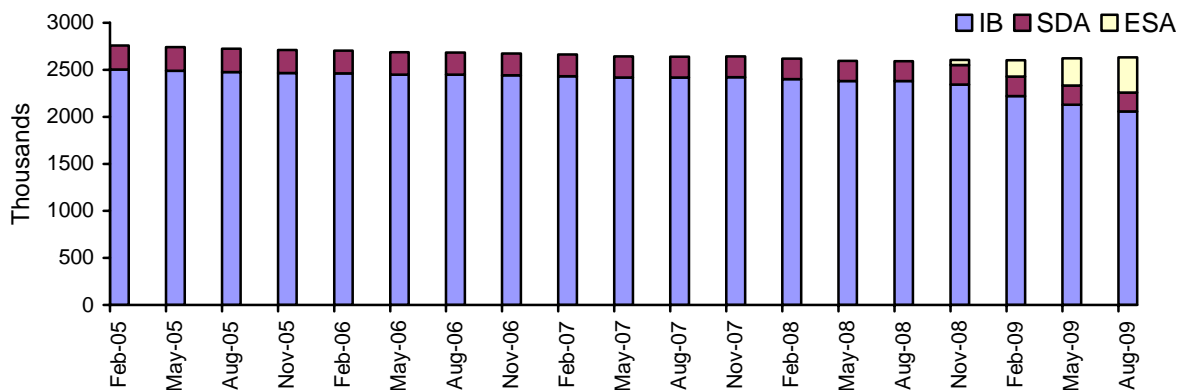
### 1.4 Employment and Support Allowance

From 27th October 2008, Employment & Support Allowance (ESA) replaced Incapacity Benefit and Income Support paid on the grounds of incapacity for new claims.

At August 2009, there were 374 thousand claimants of Employment and Support Allowance. 58% of claimants were men and 42% women.

There were 165 thousand new Employment and Support Allowance claimants in the August 2009 quarter, which represents 44% of the August caseload. Over the same period, 80 thousand claimants left the benefits, 21% of the caseload at August 2009.

Working Age Claimants: Incapacity benefits and Employment and Support Allowance







**Table 1.2 Incapacity benefits claimants & beneficiaries: August 1999 – August 2009**  
**Figures exclude Employment and Support allowance claimants**

Thousands

	All IB/SDA claimants <sup>1,2</sup>			All IB/SDA beneficiaries <sup>1,2</sup>		
	All ages	Working Age	State Pension Age	All ages	Working Age	State Pension Age
Aug -99	<b>2,732.50</b>	2,655.46	77.05	<b>1,978.56</b>	1,902.14	76.42
Nov -99	<b>2,738.13</b>	2,674.81	63.32	<b>1,967.96</b>	1,905.13	62.83
Feb -00	<b>2,724.03</b>	2,676.50	47.53	<b>1,949.96</b>	1,902.81	47.15
May -00	<b>2,728.09</b>	2,686.40	41.69	<b>1,941.20</b>	1,899.81	41.39
Aug -00	<b>2,756.51</b>	2,714.95	41.55	<b>1,949.08</b>	1,907.75	41.33
Nov -00	<b>2,764.14</b>	2,722.65	41.49	<b>1,945.44</b>	1,904.11	41.33
Feb -01	<b>2,792.03</b>	2,750.53	41.50	<b>1,961.19</b>	1,919.80	41.39
May -01	<b>2,795.34</b>	2,753.74	41.60	<b>1,955.00</b>	1,913.52	41.49
Aug -01	<b>2,805.45</b>	2,763.87	41.58	<b>1,947.63</b>	1,906.15	41.49
Nov -01	<b>2,787.71</b>	2,746.07	41.64	<b>1,926.79</b>	1,885.22	41.56
Feb -02	<b>2,787.22</b>	2,745.67	41.56	<b>1,923.90</b>	1,882.45	41.45
May -02	<b>2,807.63</b>	2,765.82	41.80	<b>1,925.86</b>	1,884.16	41.70
Aug -02	<b>2,811.43</b>	2,769.70	41.73	<b>1,918.07</b>	1,876.43	41.63
Nov -02	<b>2,818.48</b>	2,776.64	41.83	<b>1,912.53</b>	1,870.79	41.74
Feb -03	<b>2,818.57</b>	2,776.63	41.94	<b>1,908.90</b>	1,867.06	41.84
May -03	<b>2,815.66</b>	2,773.71	41.95	<b>1,897.03</b>	1,855.19	41.84
Aug -03	<b>2,819.05</b>	2,777.28	41.77	<b>1,888.80</b>	1,847.11	41.69
Nov -03	<b>2,822.27</b>	2,780.58	41.70	<b>1,881.88</b>	1,840.25	41.63
Feb -04	<b>2,819.16</b>	2,777.62	41.54	<b>1,873.81</b>	1,832.35	41.46
May -04	<b>2,814.71</b>	2,772.93	41.79	<b>1,859.96</b>	1,818.25	41.70
Aug -04	<b>2,817.01</b>	2,775.10	41.90	<b>1,849.78</b>	1,807.95	41.83
Nov -04	<b>2,814.41</b>	2,772.23	42.17	<b>1,840.28</b>	1,798.18	42.10
Feb -05	<b>2,799.87</b>	2,757.71	42.17	<b>1,827.15</b>	1,785.08	42.08
May -05	<b>2,783.72</b>	2,741.67	42.05	<b>1,809.98</b>	1,768.02	41.96
Aug -05	<b>2,767.74</b>	2,725.55	42.20	<b>1,793.00</b>	1,750.89	42.11
Nov -05	<b>2,752.90</b>	2,710.74	42.16	<b>1,780.31</b>	1,738.21	42.10
Feb -06	<b>2,747.49</b>	2,705.58	41.91	<b>1,768.66</b>	1,726.82	41.84
May -06	<b>2,730.00</b>	2,688.14	41.86	<b>1,750.91</b>	1,709.12	41.79
Aug -06	<b>2,724.98</b>	2,683.13	41.85	<b>1,738.64</b>	1,696.87	41.78
Nov -06	<b>2,714.95</b>	2,673.05	41.90	<b>1,724.35</b>	1,682.52	41.83
Feb -07	<b>2,704.10</b>	2,662.21	41.89	<b>1,711.63</b>	1,669.81	41.82
May -07	<b>2,685.32</b>	2,643.29	42.03	<b>1,692.66</b>	1,650.71	41.95
Aug -07	<b>2,683.16</b>	2,641.11	42.05	<b>1,681.86</b>	1,639.88	41.98
Nov -07	<b>2,683.75</b>	2,641.71	42.05	<b>1,673.10</b>	1,631.12	41.98
Feb -08	<b>2,659.65</b>	2,617.88	41.77	<b>1,655.01</b>	1,613.31	41.70
May -08	<b>2,637.56</b>	2,595.83	41.73	<b>1,634.92</b>	1,593.27	41.65
Aug -08	<b>2,632.00</b>	2,590.61	41.38	<b>1,624.20</b>	1,582.89	41.31
Nov -08	<b>2,593.01</b>	2,551.88	41.13	<b>1,597.04</b>	1,555.97	41.07
Feb -09	<b>2,468.62</b>	2,427.82	40.80	<b>1,533.01</b>	1,492.28	40.73
May -09	<b>2,374.21</b>	2,333.49	40.72	<b>1,479.85</b>	1,439.19	40.66
Aug -09	<b>2,299.58</b>	2,258.94	40.64	<b>1,435.20</b>	1,394.60	40.60

**Notes:**

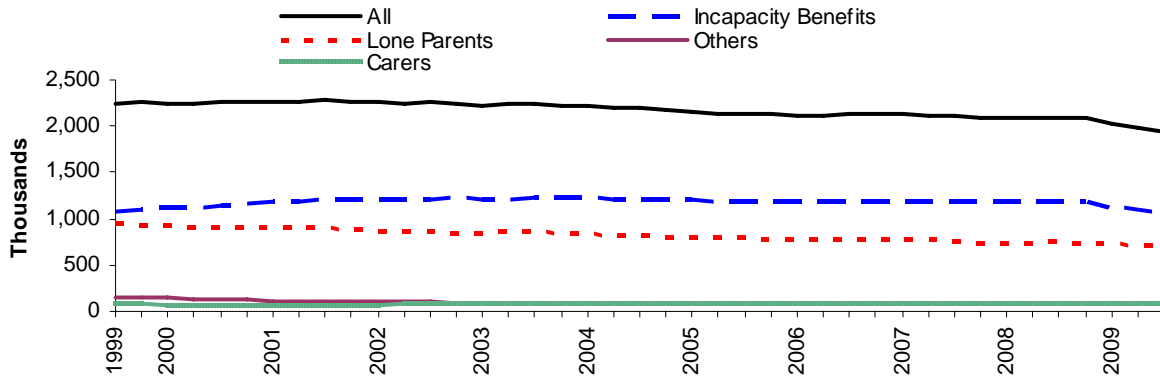
1. 'IB' – Incapacity Benefit, 'SDA' – Severe Disablement Allowance.
2. Figures on 'IB' beneficiaries show those claimants who are receiving money. 'IB' claimants include those beneficiaries plus, those receiving National Insurance Credits and no monetary payment (many of whom will also receive Income Support).
3. 'Incapacity benefits' refer to recipients of 'IB' or 'SDA', including credits only cases in receipt of Income Support on the grounds of incapacity. Numbers of Working Age claimants of 'incapacity benefits' (IB/SDA) are shown in both the Working Age Client Group and IB/SDA sections of this release. Working Age IB/SDA totals vary slightly between the two sections (a difference of approx. 0.5%) because of minor differences in methodology.
4. Figures exclude Employment and Support Allowance which replaced Incapacity Benefit and Income Support paid on the grounds of incapacity for new claims. Claimants of ESA are not included in the November 2008 figures onwards.

Latest statistical data available from: <http://statistics.dwp.gov.uk/asd/tabtool.asp>

## 1.5 Income Support

Income Support (IS) was introduced on 11th April 1988 and is an income-related benefit that can be claimed by people aged 16-59 that work fewer than 16 hours a week and have insufficient income to meet their needs. Prior to the introduction of Pension Credit in October 2003, IS was available to people aged 60 and over. From 27th October 2008, Employment & Support Allowance (ESA) replaced Incapacity Benefit and Income Support paid on the grounds of incapacity for new claims. **Claimants of ESA are not included in figures in Section 1.5.**

**Income Support by Statistical Group:  
August 1999 to August 2009**



Pension Credit (PC) replaced Minimum Income Guarantee (MIG) in Income Support on 6 October 2003. **MIG claimants have been excluded from these data.**

At August 2009, the total number of Income Support (IS) claimants was 1.95 million. Claimants of incapacity benefits represented 54% of the IS caseload (1.06 million). Lone Parents (all single claimants with dependants under 16, excluding claimants of incapacity benefits) represented 37% of the IS caseload (716 thousand), while Carers and Others represented 9% of the caseload (170 thousand).

There were 96 thousand new claimants of Income Support in the August 2009 quarter, which represents 5% of the August caseload. Over the same period, 129 thousand claimants left the benefit, 7% of the caseload at end of August 2009.

In the year to August 2009, there were a total of 428 thousand new claims for Income Support and 578 thousand claims were closed.

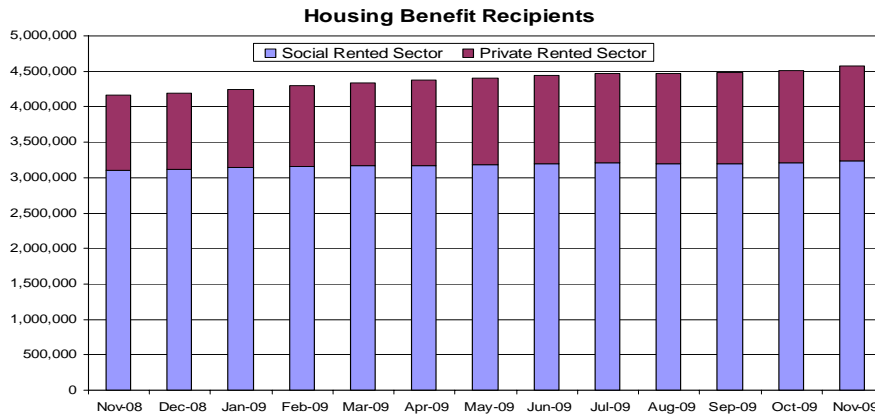
**Table 1.3 Income Support Lone Parents claimants: August 2009**

	Total	Thousands	
		Female	Male
<b>all ages</b>	<b>715.73</b>	688.33	27.39
unknown age	0.01	0.01	-
under 18	5.43	5.41	0.02
18-24	171.00	169.49	1.51
25-34	284.36	276.30	8.06
35-44	201.75	190.11	11.64
45-54	50.18	44.75	5.43
55-59	3.00	2.26	0.74

1. Lone Parents are all single claimants with dependants, but excluding claimants of incapacity benefits.

## 1.6 Housing Benefit

Housing Benefit (HB) was introduced on 1st April 1983 and is an income-related benefit designed to help people on low incomes pay for rented accommodation whether in or out of work.



At November 2009 there were just under 4.6 million recipients of Housing Benefit, of whom almost two-thirds were of working age. The average weekly amount of Housing Benefit was £83.13.

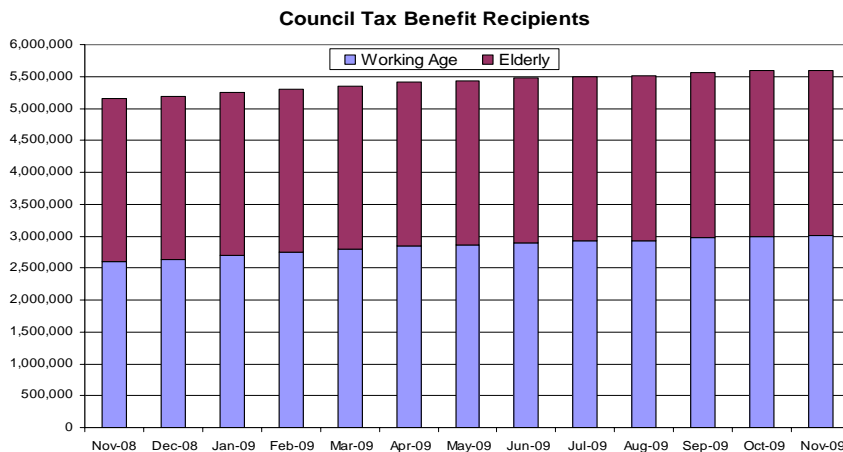
71% of Housing Benefit recipients were tenants of Social Sector landlords and 29% were tenants of Private Sector landlords. 67% of Private Sector tenants were receiving the Local Housing Allowance.

70% were also in receipt of Income Support, income-based Jobseeker's Allowance, income-based Employment and Support Allowance or Pension Credit (Guarantee Credit).

Latest statistical data available from: <http://research.dwp.gov.uk/asd/hbctb.asp>

## 1.7 Council Tax Benefit

Council Tax Benefit (CTB) was introduced on 1st April 1993 and is an income-related benefit, calculated in a similar way to Housing Benefit, which has been designed to help people on low incomes pay their Council Tax.



At November 2009 there were 5.6 million recipients of Council Tax Benefit (figure excludes second adult rebates), of whom almost 2.6 million were aged 60 and over.

The average weekly amount of Council Tax Benefit was £15.77.

70% of Council Tax Benefit recipients were also in receipt of Income Support, income-based Jobseeker's Allowance, income-based Employment and Support Allowance or Pension Credit (Guarantee Credit).

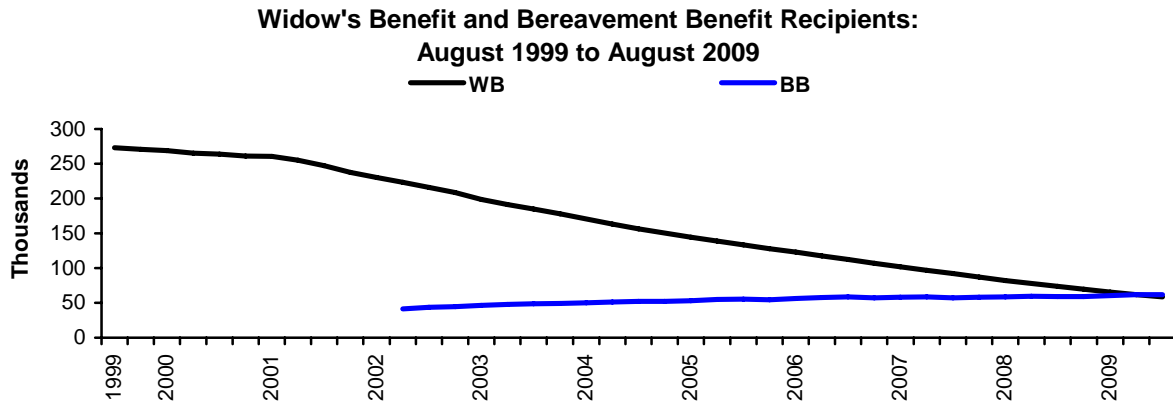
Latest statistical data available from: <http://research.dwp.gov.uk/asd/hbctb.asp>



### 1.8 Widow's Benefit & Bereavement Benefit

Widow's Benefit (WB) was introduced on 6th July 1948 and is payable to women widowed between 11th April 1988 and 8th April 2001 inclusive. There are three types of WB: Widow's Payment, Widowed Mother's Allowance and Widow's Pension. Women widowed before 11th April 1988 continue to receive Widow's Benefit based on the rules that existed before that date.

Bereavement Benefit (BB) was introduced on 9th April 2001 as a replacement for Widow's Benefit. It is payable to both men and women widowed on or after 9th April 2001. There are three types of BB: Bereavement Payment, Widowed Parent's Allowance and Bereavement Allowance.



At August 2009, there were 59 thousand claimants of Widow's Benefit, a fall of 15 thousand on a year earlier. Of these, 50 thousand were in receipt of Widow's Pension and 9 thousand Widowed Mother's Allowance.

At August 2009, there were 62 thousand claimants of Bereavement Benefit, an increase of 2 thousand on a year earlier. Of these, 19 thousand were in receipt of Bereavement Allowance and 43 thousand in receipt of Widowed Parent's Allowance.

There were 6 thousand new claimants of Bereavement Benefit/Widows Benefit in the August 2009 quarter, which represents 5% of the August caseload.

Over the same period, 11 thousand claimants left the benefits, 9% of the caseload at August 2009.

In the year to August 2009, there were a total of 27 thousand new claims for Bereavement Benefit/Widows Benefit and 42 thousand claims were closed.

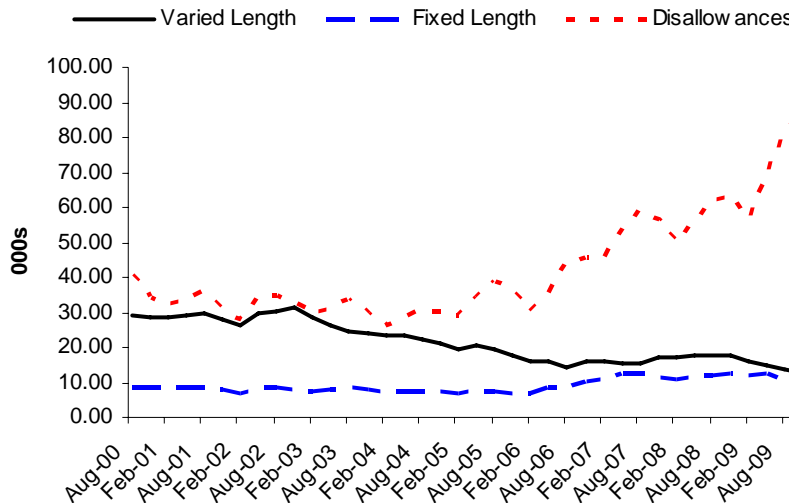
Latest statistical data available from: <http://statistics.dwp.gov.uk/asd/tabtool.asp>



### 1.9 Jobseeker's Allowance sanction and disallowance decisions

A JSA claimant can have their claim sanctioned (payment is temporarily suspended) or disallowed (entitlement ends) if they are deemed not to have just cause for failing to fulfil the conditions of their claim. Sanctions can be 'Varied length' (anything up to 26 weeks) or 'Fixed length' (2, 4 or 26 weeks). Disallowances result in the claim ending.

**Adverse decisions for JSA Labour Market questions for sanctions and disallowances per quarter: August 2000 to November 2009**



In the quarter ending November 2009 there were 171 thousand decisions made, of which 106 thousand were adverse decisions (i.e. a sanction or disallowance was applied).

Of these, 12 thousand were varied length sanctions, 7 thousand were fixed length sanctions and 87 thousand were disallowance decisions. 62% of decisions made in this quarter resulted in an adverse decision.

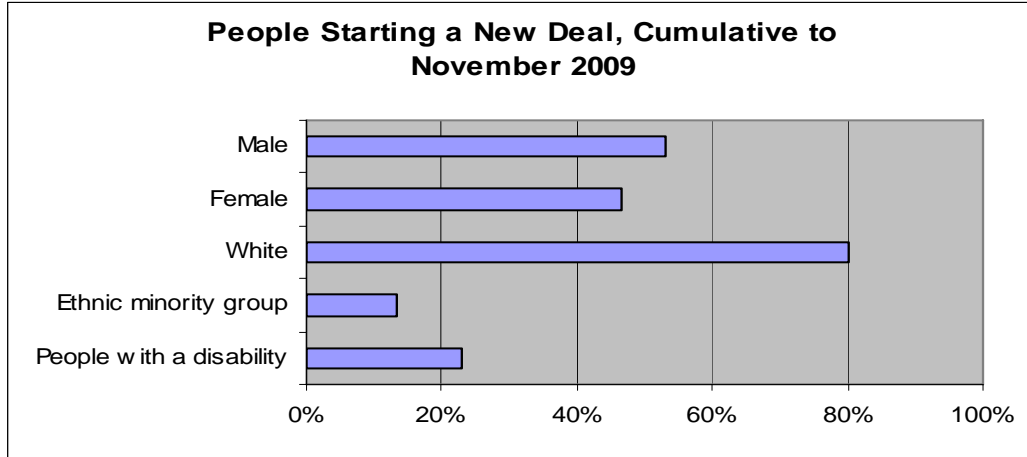
*Please Note: This summary includes data on decisions made for sanction referrals only, not opinions.*

Latest statistical data available from: <http://83.244.183.180/sanction/sanction/LIVE/tabtool.html>



## 1.10 New Deals & Employment Zones

New Deal for Young People was established in 1998 aimed at people aged 18 to 24 unemployed for at least 6 months. Since then a range of other mandatory and voluntary New Deal programmes have been established aimed at specific client groups.



3.56 million people had started on a New Deal programme up to November 2009.

Up to August 2009, some 2.25 million people have gained a job through the New Deal programme, with an additional 116 thousand people gaining a job through Employment Zones up to October 2009.

New Deal for Disabled People (NDDP) participants and leavers and New Deal for Lone Parents (NDLP) leavers series are withdrawn due to data quality issues.

**Table 1.4 Summary of New Deal and Employment Zones**

Thousands

	New Deal for:						Employment Zones
	Young People	25+	Lone Parents <sup>3</sup>	Disabled People <sup>3</sup>	50+ <sup>4</sup>	Partners <sup>5</sup>	
<i>latest data</i> <sup>1</sup>							
People Starting <sup>2</sup>	1,510.59	849.32	1,002.05	340.91	109.43	20.57	235.60
Currently Participating	89.73	38.67	94.58	-	15.35	4.93	16.69
People gaining a Job	915.65	373.51	647.65	209.73	195.78	8.32	116.26

1. Latest data relates to end of November 2009 for people starting NDYP, ND25+, NDLP, NDDP, ND50+ and NDP. For current participants and people gaining a job through NDYP, ND25+, NDLP, NDDP, ND50+ and NDP, latest data relates to the end of August 2009. Latest Employment Zone data is from October 2009.

2. The sum of people starting and gaining a job for each separate New Deal will not equal the number of people starting and gaining a job through the New Deal as a whole (as indicated above) because some people will start and gain a job through more than one New Deal programme.

3. Statistics relating to current participants and leavers from NDDP and leavers for NDLP have been withdrawn for quality reasons.

4. Starts for ND50+ are from January 2004 onwards. The jobs figures for ND50+ also include 98,040 individuals who had received Employment Credit up to March 2003.

5. Starts for NDP also include 7,820 individuals from starts up to March 2004 and jobs for NDP also include a further 1,860 jobs from up to March 2004.

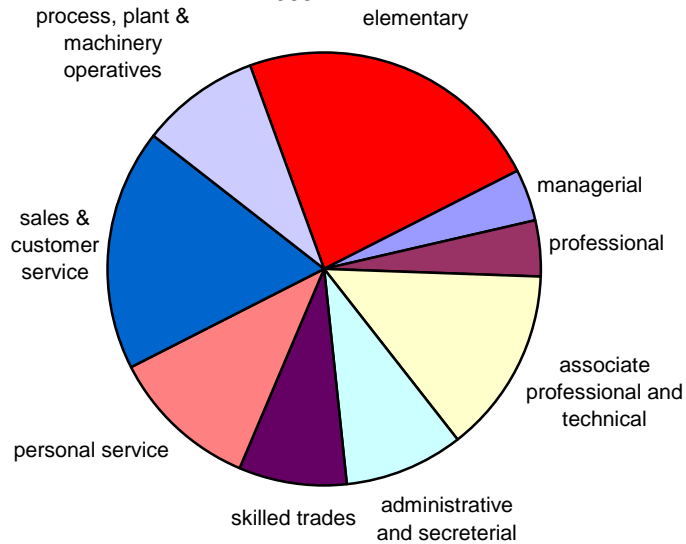
Latest statistical data available from: [http://statistics.dwp.gov.uk/asd/asd1/tabtools/tabtool\\_nd.asp](http://statistics.dwp.gov.uk/asd/asd1/tabtools/tabtool_nd.asp)



### 1.11 Vacancies handled by Jobcentre Plus

As the public employment service for Great Britain, Jobcentre Plus handle a significant share of all vacancies advertised by employers, albeit that vacancies notified to Jobcentre Plus do not represent the total number of vacancies in the whole economy.

Vacancies notified by occupation: January to December 2009



On average, 276 thousand vacancies a month were notified to Jobcentre Plus between January and December 2009. Most commonly these are for elementary occupations (23%) and sales/customer services (18%). 14% of notified vacancies are in the North West region compared to 10% in London, 5% Wales and 8% Scotland.

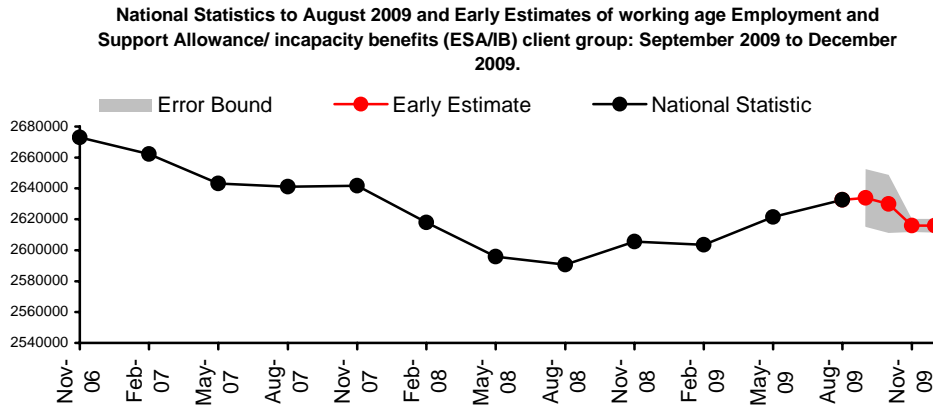
As at December 2009, the number of unfilled vacancies available to jobseekers was 224 thousand.

Latest statistical data available from: <http://www.nomisweb.co.uk>

## 2. Early Estimates for Working Age Inactive Benefit Client Group

### 2.1 Employment and Support Allowance / incapacity benefits (ESA/IB) client group

The early estimates for working age inactive benefit client groups are released monthly and are designed to give indicative, timely information ahead of the publication of full National Statistics. They are not a substitute for the National Statistics and will be replaced when the final quarterly National Statistics covering the same period are published.



The working-age Employment and Support Allowance and incapacity benefits (ESA/IB) early estimate for December 2009 is 2.615 million to the nearest 5,000. This represents a fall of 0.6 per cent since August 2009 (the latest National Statistic).

National Statistics are available for quarters up to the end of August 2009. Final figures for the quarter ending November 2009 will be released on 12 May 2010. The most recent National Statistics show 2.63 million individuals were in the ESA/IB client group at August 2009.

**Table 2.1 Point estimate for the Early Estimates of numbers in working age ESA/IB client group: September 2009 to December 2009**

*Thousands*

	National Statistics Number of Claimants	Early Estimate Number of Claimants
Aug-08	2,590.61	
Nov-08	2,605.51	
Feb-09	2,603.54	
May-09	2,621.43	
Aug-09	2,632.74	
Sep-09		2,630
Oct-09		2,630
Nov-09		2,615
Dec-09		2,615

**Notes:**

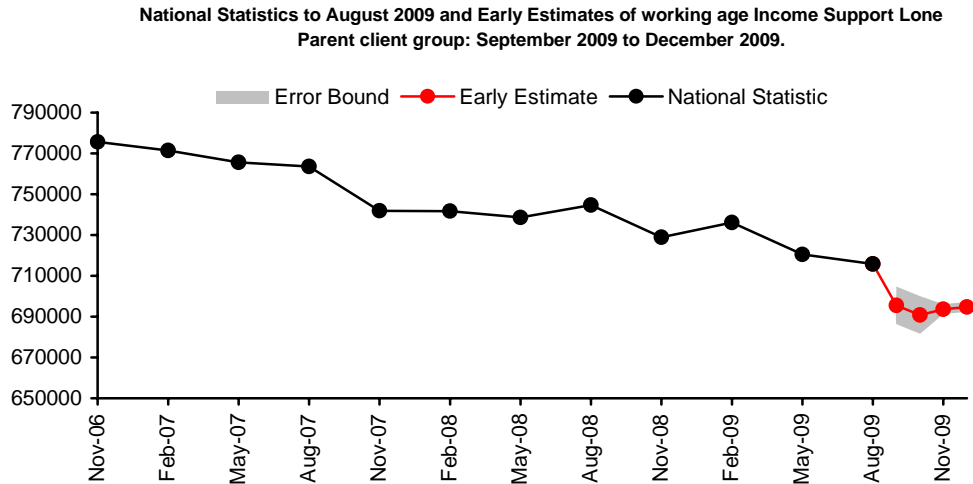
1. ESA/ incapacity benefits: From November 2008 the "incapacity benefits group" includes Employment and Support Allowance (ESA). ESA replaced Incapacity Benefit and Income Support paid on the grounds of incapacity for new claims from 27 October 2008. Prior to this the "incapacity benefits group" referred to claimants of Incapacity Benefit or Severe Disablement Allowance including people claiming IS on the grounds of Incapacity.
2. Estimates for September and October 2009 are given to the nearest 10,000. Estimates from November 2009 are rounded to the nearest 5,000 following methodological improvements to the estimation process.
3. The pale grey band in the chart above emphasises that the figures are only estimates. Improvements to the methodology mean that our estimates are more accurate from November 2009 - the final National Statistic is expected to be revised by an average of 0.2 per cent. From November 2009 this band illustrates this typical revision. Error bounds up to November 2009 are wider as they illustrate a band within which the National Statistic is expected to lie. For more information see the technical note.





## 2.2 Income Support Lone Parent (ISLP) client group

The early estimates for working age inactive benefit client groups are released monthly and are designed to give indicative, timely information ahead of the publication of full National Statistics. They are not a substitute for the National Statistics and will be replaced when the final quarterly National Statistics covering the same period are published.



The working-age Income Support Lone Parent (ISLP) early estimate for December 2009 is 695 thousand to the nearest 5,000. This represents a fall of 2.9 per cent since August 2009 (the latest full National Statistic figure).

National Statistics are available for quarters up to the end of August 2009. Final figures for the quarter ending November 2009 will be released on 12 May 2010. The most recent National Statistics show 716 thousand individuals were in the ISLP client group at August 2009.

**Table 2.2 Point estimate for the Early Estimates of numbers in working age ISLP client group: September 2009 to December 2009**

*Thousands*

	<b>National Statistics</b>	<b>Early Estimate</b>
	Number of Claimants	Number of Claimants
Aug-08	744.68	
Nov-08	728.98	
Feb-09	736.04	
May-09	720.48	
Aug-09	715.73	
Sep-09		700
Oct-09		690
Nov-09		695
Dec-09		695

**Notes:**

- Income Support Lone Parents: claimants on Income Support with child under 16 and no partner. New and repeat customers with the following conditions will no longer be entitled to Income Support:
  - A youngest child aged 12 or over from 24 November 2008;
  - A youngest child aged 10 or over from 26 October 2009.
- Estimates for September and October 2009 are given to the nearest 10,000. Estimates from November 2009 are rounded to the nearest 5,000 following methodological improvements to the estimation process.
- The pale grey band in the chart above emphasises that the figures are only estimates. Improvements to the methodology mean that our estimates are more accurate from November 2009 - the final National Statistic is expected to be revised by an average of 0.3 per cent. From November 2009 this band illustrates this typical revision. Error bounds up to November 2009 are wider as they illustrate a band within which the National Statistic is expected to lie. For more information see the technical note.

Latest statistical data available from: [http://statistics.dwp.gov.uk/asd/early\\_ests.asp](http://statistics.dwp.gov.uk/asd/early_ests.asp)

### 3. Pensioners

#### 3.1 Pensioner client group

The Pensioner client group covers claimants, over State Pension age (currently 60 for females and 65 for males), of at least one of the following benefits: State Pension, Pension Credit, Attendance Allowance, Widow's Benefit, Disability Living Allowance, Incapacity Benefit, and Severe Disablement Allowance. They are split into statistical groups that reflect their main reason for claiming benefit.



At August 2009 there were 12.6 million claimants in the Pensioner Client Group, an increase of 243 thousand since August 2008. Of these, 20% were in receipt of Pension Credit. 50% of these Pension Credit claimants were also claiming Attendance Allowance or Disability Living Allowance.

**Table 3.1 Pensioner Client Group recipients: August 2004 – August 2009**

Thousands

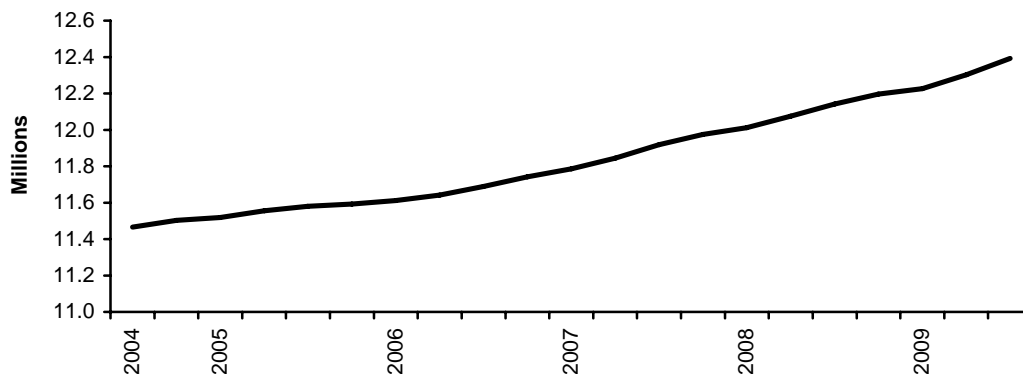
	Total	SP and PC: Disabled	SP and PC: Not Disabled	SP but not PC: Disabled	SP but not PC: Not Disabled	PC but not SP: Disabled	PC but not SP: Not Disabled	Neither SP nor PC: Disabled	Neither SP nor PC: Not Disabled
Aug -04	11,668.11	1,003.82	1,245.69	1,282.39	7,929.91	72.57	71.81	37.76	24.16
Nov -04	11,710.58	1,028.05	1,255.69	1,280.46	7,938.11	73.38	72.83	37.97	24.10
Feb -05	11,726.47	1,037.26	1,268.33	1,273.89	7,938.28	73.49	73.51	37.74	23.98
May -05	11,760.74	1,052.43	1,281.60	1,281.06	7,939.49	73.17	72.88	37.11	23.00
Aug -05	11,786.58	1,065.96	1,280.72	1,298.46	7,933.04	73.71	73.80	37.60	23.30
Nov -05	11,804.43	1,075.10	1,278.42	1,307.14	7,929.69	75.54	75.42	39.48	23.63
Feb -06	11,817.23	1,081.17	1,277.97	1,315.46	7,934.50	73.53	73.75	37.77	23.08
May -06	11,847.97	1,088.48	1,278.31	1,322.93	7,949.50	73.76	74.05	38.06	22.88
Aug -06	11,896.50	1,100.55	1,274.33	1,338.09	7,973.44	74.29	74.59	38.42	22.78
Nov -06	11,949.62	1,113.70	1,269.09	1,351.57	8,004.82	74.87	74.34	38.69	22.54
Feb -07	11,992.45	1,114.06	1,260.09	1,356.42	8,052.20	74.56	74.19	38.60	22.33
May -07	12,053.77	1,122.36	1,252.29	1,370.93	8,097.85	74.82	74.26	38.97	22.29
Aug -07	12,127.16	1,133.46	1,243.25	1,389.71	8,152.28	74.55	73.62	38.92	21.37
Nov -07	12,182.27	1,140.25	1,234.23	1,403.83	8,197.32	74.21	73.15	38.72	20.56
Feb -08	12,216.39	1,139.13	1,223.86	1,410.21	8,237.94	73.56	72.92	38.75	20.02
May -08	12,279.39	1,144.14	1,214.40	1,428.68	8,287.34	73.68	72.69	38.97	19.50
Aug -08	12,344.41	1,155.40	1,206.30	1,448.69	8,331.36	73.72	72.04	38.76	18.14
Nov -08	12,396.06	1,164.55	1,201.42	1,464.57	8,365.41	73.51	71.41	38.17	17.02
Feb -09	12,423.79	1,159.85	1,193.82	1,469.67	8,402.45	73.03	70.86	37.81	16.31
May -09	12,500.78	1,167.68	1,189.05	1,489.12	8,457.71	73.20	70.59	37.76	15.66
Aug -09	12,586.92	1,177.58	1,184.10	1,512.11	8,519.54	72.79	69.22	36.72	14.88

Latest statistical data available from: <http://statistics.dwp.gov.uk/asd/tabtool.asp>

### 3.2 State Pension

State Pension (SP) was introduced on 1st January 1909 and is paid to people who have reached the state pension age and who fulfil the residency and contributions conditions. The state pension age for men is 65 whilst the State Pension age for women born on or after 6 April 1950 but before 6 April 1955 is rising from 60 to 65 between 2010 and 2020. The State Pension age for women born on or after 6 April 1955 but before 6 April 1959 will be 65. State Pension age will increase for both men and women from age 65 to 68 between 2024 and 2046.

**State Pension Recipients: August 2004 to August 2009**



At August 2009, there were 12.4 million claimants of State Pension, a rise of 252 thousand on a year earlier. Of these, 38% were male and 62% female.

The average weekly amount in payment at August 2009 was £102.35, a rise of £6.03 since August 2008.

In quarter to August 2009, there were a total of 188 thousand new claims for State Pension which represents 1.5% of the caseload. Over the same period, 113 thousand claimants left the benefit, representing 0.9% of the caseload at August 2009.

In the year to August 2009, there were a total of 705 thousand new claims for State Pension and 501 thousand claims were closed.

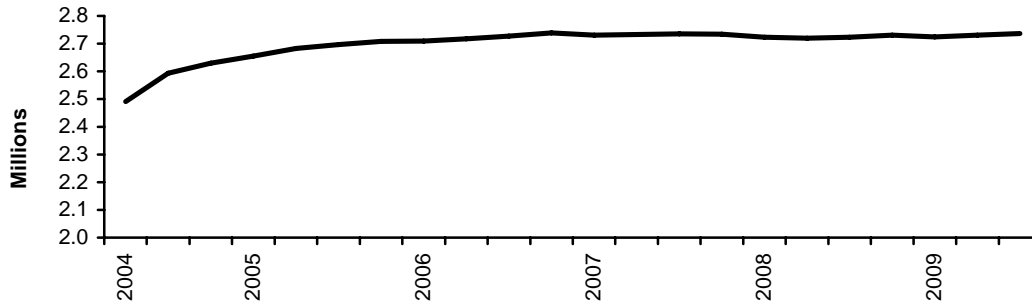
**Table 3.2 State Pension recipients: August 2004 – August 2009**

	All	Male	Thousands Female
Aug -04	<b>11,466.30</b>	4,301.68	7,164.61
Nov -04	<b>11,504.32</b>	4,315.80	7,188.52
Feb -05	<b>11,519.88</b>	4,322.52	7,197.36
May -05	<b>11,556.81</b>	4,342.15	7,214.66
Aug -05	<b>11,580.50</b>	4,354.75	7,225.74
Nov -05	<b>11,592.75</b>	4,362.20	7,230.55
Feb -06	<b>11,611.59</b>	4,369.79	7,241.80
May -06	<b>11,641.83</b>	4,379.54	7,262.29
Aug -06	<b>11,689.12</b>	4,393.60	7,295.52
Nov -06	<b>11,742.01</b>	4,408.91	7,333.10
Feb -07	<b>11,785.67</b>	4,418.99	7,366.68
May -07	<b>11,846.43</b>	4,437.99	7,408.44
Aug -07	<b>11,919.12</b>	4,463.09	7,456.04
Nov -07	<b>11,976.03</b>	4,484.97	7,491.06
Feb -08	<b>12,011.54</b>	4,499.53	7,512.02
May -08	<b>12,074.99</b>	4,526.79	7,548.20
Aug -08	<b>12,142.20</b>	4,555.63	7,586.57
Nov -08	<b>12,196.44</b>	4,578.74	7,617.70
Feb-09	<b>12,226.26</b>	4,594.18	7,632.08
May-09	<b>12,304.07</b>	4,633.62	7,670.44
Aug-09	<b>12,393.84</b>	4,678.30	7,715.54

### 3.3 Pension Credit

*Pension Credit (PC) was introduced on 6th October 2003 and replaced Minimum Income Guarantee (MIG). For people aged 60 or over, the Guarantee Credit element guarantees an income at a set level. People aged 65 or over (and couples where one member is 65 or over) may also be entitled to Savings Credit if they have modest income from savings, investments or a second pension.*

**Pension Credit Recipients: May 2004 to August 2009**



At August 2009, there were 2.74 million claimants of Pension Credit (3.35 million including partners), a rise of 7 thousand on the previous quarter. Of these, 936 thousand claimed Guarantee Credit only, 1.2 million claimed Guarantee and Savings Credit, and 602 thousand were claiming Savings Credit only.

The average weekly amount of Pension Credit in payment at August 2009 was £55.66, a rise of £2.86 since August 2008.

Experimental statistics on benefit flows show there were 268 thousand new claims to Pension Credit in the year to August 2009. There were 263 thousand new claims to Pension Credit in the year 2008/2009. A small number of claims take a long time to process and are still outstanding at the cut off point for producing these statistics. This means that the statistics undercounts the final number of claims by a small percentage (around two percent).

**Table 3.3 Pension Credit claimants: August 2004 – August 2009**

	Total	Guarantee Credit only	Guarantee Credit & Savings Credit	Savings Credit only	Thousands Still on Minimum Income Guarantee
Aug -04	<b>2,592.59</b>	749.17	1,293.25	549.99	0.18
Nov -04	<b>2,629.58</b>	759.90	1,298.96	570.58	0.14
Feb -05	<b>2,654.67</b>	763.15	1,313.11	578.36	0.06
May -05	<b>2,682.73</b>	767.26	1,321.68	593.74	0.04
Aug -05	<b>2,696.66</b>	772.40	1,317.18	607.04	0.04
Nov -05	<b>2,708.05</b>	776.94	1,313.48	617.60	0.04
Feb -06	<b>2,709.22</b>	773.16	1,332.11	603.93	0.04
May -06	<b>2,717.39</b>	775.57	1,343.23	598.56	0.02
Aug -06	<b>2,728.15</b>	787.30	1,334.41	606.41	0.02
Nov -06	<b>2,738.56</b>	798.13	1,325.87	614.54	0.02
Feb -07	<b>2,730.94</b>	800.11	1,327.78	603.03	0.03
May -07	<b>2,733.50</b>	805.73	1,330.09	597.65	0.02
Aug -07	<b>2,735.72</b>	814.42	1,321.95	599.33	0.03
Nov -07	<b>2,734.54</b>	823.57	1,310.05	600.90	0.03
Feb -08	<b>2,723.14</b>	865.19	1,265.43	592.50	0.02
May -08	<b>2,719.14</b>	882.07	1,246.24	590.80	0.03
Aug -08	<b>2,723.53</b>	889.74	1,241.62	592.15	0.03
Nov -08	<b>2,731.37</b>	901.23	1,232.25	597.86	0.03
Feb -09	<b>2,723.61</b>	913.40	1,214.69	595.49	0.03
May -09	<b>2,730.56</b>	925.71	1,205.23	599.59	0.03
Aug -09	<b>2,737.29</b>	935.59	1,199.61	602.05	0.03

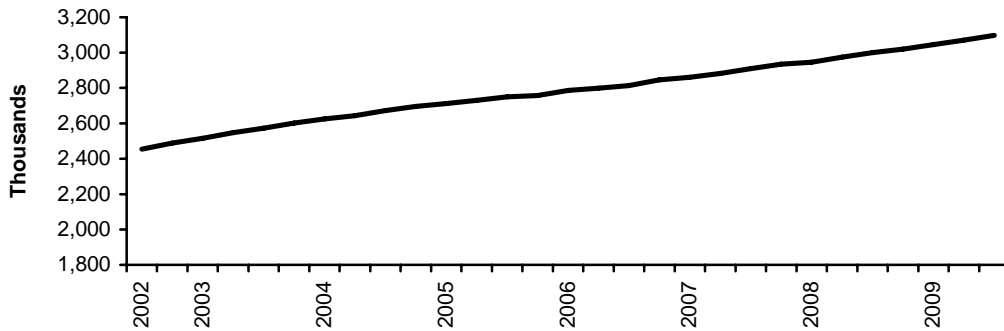
1. Pension Credit replaced MIG on the 6<sup>th</sup> Oct 2003, however a small number of residual cases remain on MIG.

## 4. Disabled and Carers

### 4.1 Disability Living Allowance

*Disability Living Allowance (DLA) was introduced on 1st April 1992 and is a benefit for people who have become disabled before the age of 65 and who need assistance with personal care or mobility.*

**Disability Living Allowance Recipients:  
August 2002 to August 2009**



At August 2009, 3.10 million people were receiving Disability Living Allowance (not including suspended cases), a rise of 97 thousand on a year earlier. Of these claimants 50% were male. Both the male and female caseloads are rising, males by 48 thousand and females by 49 thousand in the year to August 2009.

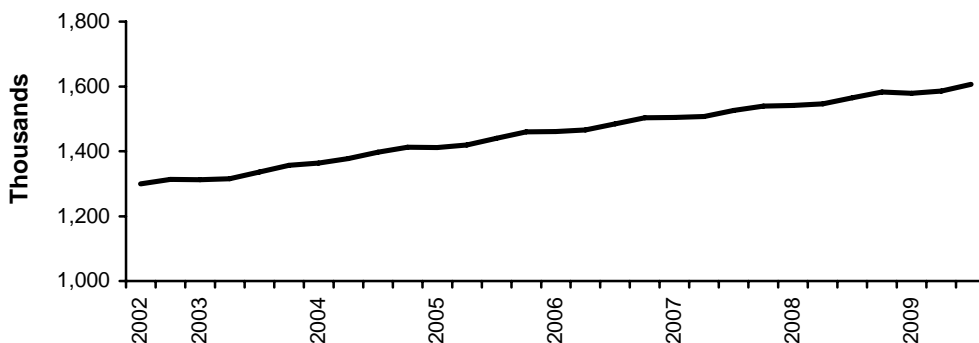
At August 2009, 10% of recipients were children, 57% were working age and 33% were pension age (a small number are an unknown age).

Latest statistical data available from: <http://statistics.dwp.gov.uk/asd/tabtool.asp>

### 4.2 Attendance Allowance

*Attendance Allowance (AA) was introduced on 6th December 1971 and is a benefit for people over the age of 65 who are so severely disabled, physically or mentally, that they need a great deal of help with personal care or supervision. Those requiring constant help receive the higher rate of benefit.*

**Attendance Allowance Cases in Payment:  
August 2002 to August 2009**



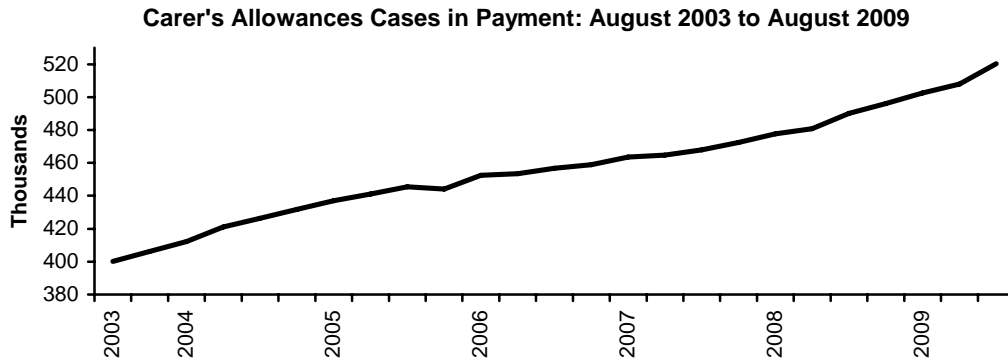
At August 2009 there were 1.61 million people receiving Attendance Allowance (excluding suspended cases), a rise of 41 thousand on a year earlier. Of these, 33% were male and 67% female. Both the male and female caseloads are rising, males by 20 thousand and females by 21 thousand in the year to August 2009. At August 2009, 66% were aged 80 or over.

Latest statistical data available from: <http://statistics.dwp.gov.uk/asd/tabtool.asp>



### 4.3 Carer's Allowance

Carer's Allowance (CA) was introduced on 5th July 1976; it is paid to carers who look after a severely disabled person for at least 35 hours a week. The severely disabled person must be getting either higher or middle rate DLA care component or AA or maximum rate Constant Attendance Allowance with their War Pension or Industrial Injuries Disablement Benefit.



At August 2009, there were 520 thousand people receiving Carer's Allowance (not including underlying entitlement cases). 26% of claimants were male, and 74% female.

At August 2009, there were a further 438 thousand people entitled to Carer's Allowance but not receiving any payment due to overlapping benefit provisions (i.e. underlying entitlement cases).

**Table 4.1 Awards currently in payment for Disability Living Allowance, Carer's Allowance and Attendance Allowance: August 2002 – August 2009**

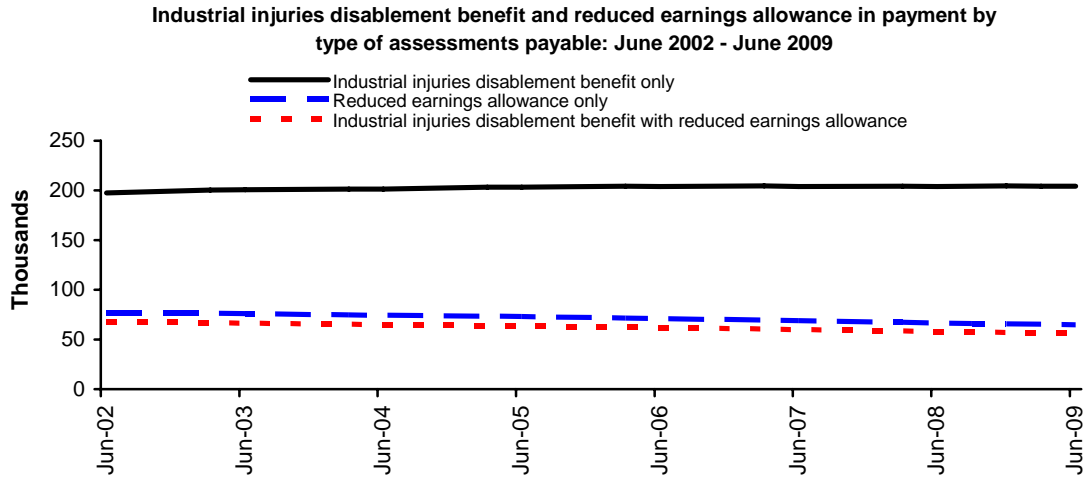
*Thousands*

	Disability Living Allowance	Attendance Allowance	Carer's Allowance <sup>1</sup>
Aug-02	2,454.34	1,300.09	..
Nov -02	2,488.49	1,313.74	..
Feb -03	2,516.13	1,312.75	..
May -03	2,547.09	1,315.64	..
Aug -03	2,573.54	1,336.21	400.18
Nov -03	2,601.88	1,356.31	406.23
Feb -04	2,625.39	1,363.81	412.12
May -04	2,644.28	1,377.35	421.18
Aug -04	2,672.16	1,397.30	426.34
Nov -04	2,696.28	1,412.50	431.66
Feb -05	2,712.91	1,411.33	436.94
May -05	2,729.72	1,419.42	441.03
Aug -05	2,749.48	1,440.09	445.43
Nov -05	2,757.64	1,460.25	444.09
Feb -06	2,785.68	1,460.57	452.54
May -06	2,799.16	1,465.59	453.54
Aug -06	2,814.29	1,484.58	456.70
Nov -06	2,845.75	1,503.05	458.93
Feb -07	2,860.79	1,503.85	463.50
May -07	2,881.83	1,507.50	464.67
Aug -07	2,909.98	1,525.61	468.06
Nov -07	2,934.44	1,539.32	472.42
Feb -08	2,945.57	1,541.58	477.66
May -08	2,973.54	1,546.68	480.73
Aug -08	2,999.65	1,565.00	490.03
Nov -08	3,019.70	1,582.81	496.14
Feb-09	3,043.99	1,578.64	502.50
May-09	3,070.61	1,585.79	507.97
Aug-09	3,096.30	1,605.92	520.35

1. Data is not available prior to August 2003.

#### 4.4 Industrial Injuries Disablement Benefit

*Industrial Injuries Disablement Benefit (IIDB) was introduced on 5th July 1948 and is a benefit for people who are disabled because of an industrial accident or prescribed industrial disease. Since 1st October 1986 any claim resulting in an assessment of less than 14% disabled does not normally attract benefit.*



There were 325 thousand people claiming under the Industrial Injuries Disablement Benefit scheme in June 2009, of whom 63% received Industrial Injuries Disablement Benefit only, 20% received Reduced Earnings Allowance only, and 17% received both. The number of people claiming benefit was 1.1% lower than in June 2008. The average weekly payment was £47.49.

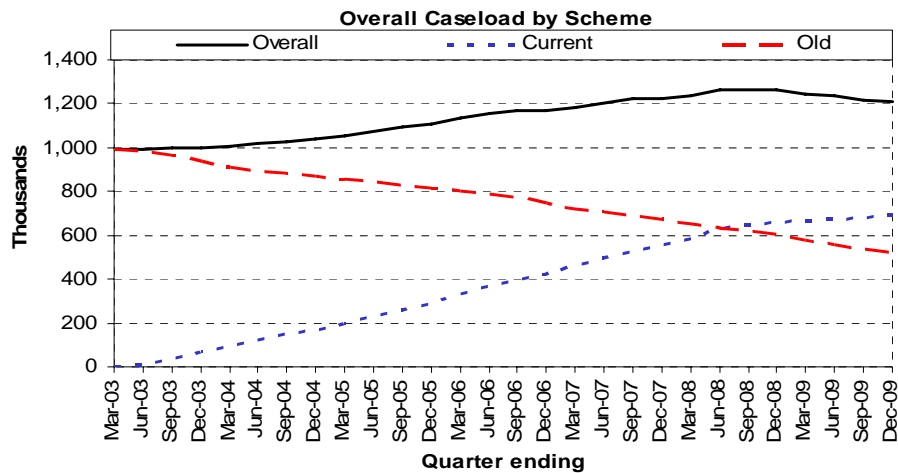
Latest statistical data available from: <http://statistics.dwp.gov.uk/asd/iidb.asp>

## 5. Families & Children

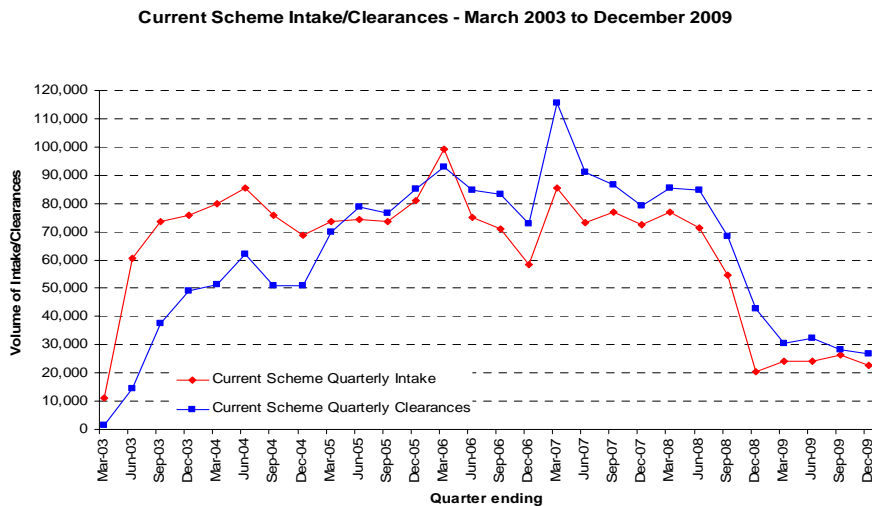
### 5.1 Child Support Agency cases

The Child Maintenance and Enforcement Commission (CMEC), established as a non-departmental public body under the Child Maintenance and Other Payments Act 2008, is responsible for the child maintenance system in Great Britain. The Commission assumed responsibility for the Child Support Agency (CSA) from the Department for Work and Pensions (DWP) on 1 November 2008.

These statistics, produced by the Child Maintenance and Enforcement Commission in conjunction with the DWP Information Directorate, contain the most up-to-date tables and breakdowns on the CSA's two existing statutory child maintenance schemes. The CSA statistics presented here were released on 27th January 2010.



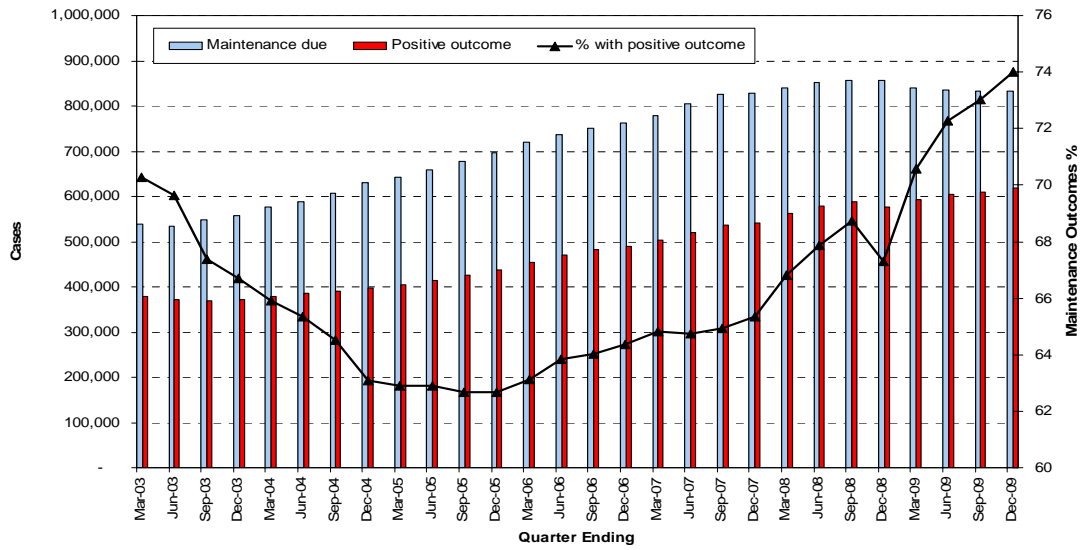
At the end of December 2009, the CSA live and assessed caseload stood at 1.21 million.



The volume of uncleared current scheme applications has fallen by 6,300 since September 2009, and is currently at 25,500. This represents a fall of 20% since September 2009.



### Cases Benefiting from Maintenance



In the quarter ending December 2009, 74% of all cases in which maintenance was due had either received maintenance via the CSA collection service, or had a maintenance direct arrangement in place.

Latest statistical data available from: <http://www.childmaintenance.org/en/publications/index.html>



## NOTES TO EDITORS

### 1. Modernisation of DWP statistics

The National Statistics paper "DWP statistics transformed: the modernisation of the DWP's data sources and statistical publications" announced major changes to the National Statistics the Department publishes, both in the data sources employed and the methods of dissemination. The paper is available from:

[http://statistics.dwp.gov.uk/asd/asd1/stats\\_consultation/modstats.pdf](http://statistics.dwp.gov.uk/asd/asd1/stats_consultation/modstats.pdf)

### 2. Links to internet-based statistical tables

For each statistic in this publication, access to more detailed statistics are available by clicking on the web links. For benefit, New Deal, JSA Sanctions and vacancy statistics derived from 100% sources, an internet-based Tabulation Tool is available with the ability for users to define their own statistical queries (available at: <http://statistics.dwp.gov.uk/asd/tabtool.asp>). A similar Tabulation Tool, derived from 5% sample data, is also available. Data on key benefits continue to be available via NOMIS (<http://www.nomisweb.co.uk/>). Whenever possible, 100% data should be used in preference to 5% estimates, as these are both more accurate and form DWP's headline statistics. Some statistics remain outside the scope of the Tabulation Tool but will continue to be available via the internet as pre-defined summary tables.

### 3. Statistical groups

DWP has a typology to define Statistical Groups within the client group classifications. The aim of the Statistical Group typology is to present each person by the main reasons they are in contact with the Department. Like the client group classification, each client is classified just once, permitting the estimation of the total number of people claiming one or more benefits. The Statistical Group hierarchy is:

- |   |                                  |
|---|----------------------------------|
| a] Jobseeker  | e] Other income-related benefits |
| b] Employment and Support Allowance and incapacity benefits | f] Disabled                      |
| c] Lone parents   | g] Bereaved                      |
| d] Carer's  | h] Housing Benefit               |
|   | i] State Pension only recipients |

From November 2008 the "incapacity benefits statistical group" includes Employment and Support Allowance (ESA). ESA replaced Incapacity Benefit and Income Support paid on the grounds of incapacity for new claims from 27th October 2008. Prior to this the "incapacity benefits group" covered people on Incapacity Benefit or Severe Disablement Allowance, including people claiming Income Support on the grounds of incapacity.

### 4. Local Authority Changes

On 1st April 2009, the reorganisation of the Local Authorities of England created nine new unitary authorities (UAs). From May 2009 these changes will be reflected in the Tabulation Tool. A full list of changes are available on the Tabulation Tools front page (<http://research.dwp.gov.uk/asd/tabtool.asp>).

### 5. Jobseeker's Allowance figures at ONS

The preferred source of numbers for Jobseeker's Allowance is the ONS claimant count figure; these are more up to date and contain clerical cases. However the reason we use the DWP JSA figures is that they are consistent with the other benefits used to produce DWP National Statistics, and permit a wider set of breakdowns. The ONS figures are available from <http://www.statistics.gov.uk/>.

### 6. Flows on and off benefit

Also available are quarterly experimental figures on flows on and off all the main benefits. The historic flows information is available on the tabulation tool up to February 2008. Pension credit information is available via a one-click table: [http://83.244.183.180/100pc/pc/tabtool\\_pc.html](http://83.244.183.180/100pc/pc/tabtool_pc.html)



## 7. Welfare Reform

Employment Support Allowance replaced Incapacity Benefit and Income Support paid on the grounds of incapacity on 27<sup>th</sup> October 2008 for new claims. The figures relating to Employment Support Allowance have been thoroughly quality assured to National Statistics standard.

The Lone Parent Obligation policy came into effect from 24 November 2008; Lone Parents (LPs) with a youngest child aged 12 or over were no longer able to make a new or repeat claim for Income Support (IS) solely on the basis of their parental status. Existing IS LPs with a youngest child aged 12 or over are having their eligibility removed over a period of time commencing 2 March 2009. From October 2009 this policy was extended to LPs with a youngest child aged 10 or 11 and from October 2010 the policy will be extended to LPs with a youngest child aged 7 or over.

## 8. Early Estimates

The Early Estimates are designed to give indicative, timely information ahead of the publication of full National Statistics. They are not a substitute for the National Statistics and will be replaced when the final quarterly National Statistics covering the same period are published.

Last month we are introduced some small changes to the methodology for deriving our early estimates. These changes have improved accuracy, meaning we can present numbers rounded to 5 thousand (compared to 10 thousand previously) and with a narrower 'error bound'. More detailed information can be accessed via the following links:

[http://statistics.dwp.gov.uk/asd/asd1/early\\_ests/technical\\_document\\_final.pdf](http://statistics.dwp.gov.uk/asd/asd1/early_ests/technical_document_final.pdf)

[http://statistics.dwp.gov.uk/asd/asd1/early\\_ests/QandA\\_Early\\_Estimates\\_final.pdf](http://statistics.dwp.gov.uk/asd/asd1/early_ests/QandA_Early_Estimates_final.pdf)

## 9. Social Security and Child Support Appeals Tribunal (SSCSA)

The Independent Tribunal Service was introduced in 1984 to provide an independent appeals system. It was replaced by the Appeals Service (tAS) in April 2000. From 1st April 2006 the Appeals Service, was renamed as the Social Security and Child Support Appeals Tribunal (SSCSA) and became part of The Tribunals Service (a new Executive agency within the Department for Constitutional Affairs).

Responsibility for publishing statistics on the appeals now resides with SSCSA and they are currently working to publish statistical information via their website <http://www.tribunals.gov.uk/>, however in the interim the latest published figures are available here: <http://statistics.dwp.gov.uk/asd/qat.asp>. The contact for the SSCSA appeals data is: [TSSTATS@tribunals.gsi.gov.uk](mailto:TSSTATS@tribunals.gsi.gov.uk).

## 10. Fraud and Error statistics

National Statistics are published regularly, presenting six-monthly estimates of fraud and error in claims for Income Support, Jobseeker's Allowance, Pension Credit and Housing Benefit, along with an annual estimate of the level of fraud and error in the benefit system as a whole. One-off benefit reviews have been carried out from time to time to estimate fraud and error in claims for other benefits. All these reports can be found at [http://research.dwp.gov.uk/asd/asd2/fraud\\_error.asp](http://research.dwp.gov.uk/asd/asd2/fraud_error.asp)

## 11. Take-Up of Income-Related Benefits

Publications contain information on the take-up of the main income-related benefits in Great Britain: Income Support, Pension Credit, Housing Benefit, Council Tax Benefit and Jobseeker's Allowance (income based). Take-up is measured in two ways. Expenditure take-up compares the total amount of benefit received in the course of a year with the total amount that would have been received if everyone took up their entitlement for the full period of entitlement. Caseload take-up compares the number of benefit claimants – averaged over the year – with the number who would be receiving if everyone took up their entitlement for the full period of entitlement. Data is sourced from the Family Resources Survey and administrative benefit records. Latest published figures are available at <http://research.dwp.gov.uk/asd/irb.asp>



## 12. Other National Statistics issued by the Department for Work and Pensions

Abstract of Statistics for Benefits and Contributions and Indices of Prices and Earnings (annual) – provides a reference source for those people interested in the main aspects of benefits, contributions and indices of prices and earnings. Latest published figures: [http://statistics.dwp.gov.uk/asd/other\\_stats.asp](http://statistics.dwp.gov.uk/asd/other_stats.asp)

Child Support Agency Quarterly Summary of Statistics – provides statistics on the Child Support Agency. Latest published figures: <http://www.childmaintenance.org/publications/statistics.html>

Family Resources Survey (annual) - provides information on the incomes and circumstances of private households in the United Kingdom: <http://statistics.dwp.gov.uk/asd/frs>

Households Below Average Income (annual) - provides information on potential living standards as determined by disposable income, changes in income patterns over time and income mobility: <http://statistics.dwp.gov.uk/asd/hbai.asp>

Industrial Injuries Disablement Benefit and Reduced Earnings Allowance Statistics (annual) – provides statistics on current assessments and movements during statistical period. Latest published figures: <http://statistics.dwp.gov.uk/asd/iidb.asp>

Industrial Injuries Disablement Benefit Quarterly Summary of Statistics – provides statistics on people in receipt of Industrial Injuries Disablement Benefit, new claims and newly diagnosed prescribed diseases. Latest published figures: <http://statistics.dwp.gov.uk/asd/iidb.asp>

National Insurance numbers allocated to overseas nationals (Previously migrant workers statistics – quarterly) provides statistics on migrant workers. Latest published figures: [http://statistics.dwp.gov.uk/asd/tabtool.asp#ni\\_alloc](http://statistics.dwp.gov.uk/asd/tabtool.asp#ni_alloc)

Neighbourhood Statistics – Quarterly ward and Lower Super Outputs Area caseloads for Income Support, Jobseeker's Allowance, Incapacity Benefits, Disability Living Allowance, Attendance Allowance, Pension Credit and State Pension are available from: <http://83.244.183.180/NESS/page1.htm>

Pensioner Income Series (annual) - examines the levels, sources and distribution of pensioners' incomes and the position of pensioners within the population income distribution. Latest published figures: [http://statistics.dwp.gov.uk/asd/asd6/pensioners\\_income.asp](http://statistics.dwp.gov.uk/asd/asd6/pensioners_income.asp)

Second Tier Pension Provision (annual) – contains analysis of contracted out pension schemes. Latest published figures: [http://statistics.dwp.gov.uk/asd/asd1/dsu/second\\_tier/second\\_tier.asp](http://statistics.dwp.gov.uk/asd/asd1/dsu/second_tier/second_tier.asp)

Tax/Benefit Model Tables (annual) – designed to illustrate the weekly financial circumstances of a selection of hypothetical local authority and private tenants. Latest published figures: <http://statistics.dwp.gov.uk/asd/tbmt.asp>

## 13. Other statistical outputs issued by the Department for Work and Pensions

Benefit Expenditure Tables - financial year historic information on benefit expenditure and caseloads, along with forecasts are available from: <http://statistics.dwp.gov.uk/asd/asd4/expenditure.asp>

Six Month Offer Statistics - a support package offering up to 500,000 opportunities for Jobseeker's Allowance customers reaching six months unemployment. Latest published figures: [http://research.dwp.gov.uk/asd/6month\\_offer.asp](http://research.dwp.gov.uk/asd/6month_offer.asp)

Employment and Support Allowance - work capability assessment statistics. Latest published figures: [http://research.dwp.gov.uk/asd/workingage/esa\\_wca/esa\\_wca\\_arc.asp](http://research.dwp.gov.uk/asd/workingage/esa_wca/esa_wca_arc.asp)

Pathways to Work Officials Statistics - Pathways to Work comprises a comprehensive range of support and provision designed to improve customers' prospects of returning to work. Latest published figures: [http://research.dwp.gov.uk/asd/workingage/ib\\_ref\\_p2w.asp](http://research.dwp.gov.uk/asd/workingage/ib_ref_p2w.asp)