

# First Release

17<sup>th</sup> March 2010

Coverage: Great Britain

Theme: People and Places

**DWP** Department for  
Work and Pensions

**Issued by:**  
Information Directorate  
Department for Work and  
Pensions

Telephone:  
Press Office: 0203 267 5144

Website:  
[www.dwp.gov.uk](http://www.dwp.gov.uk)

**Statistician:**

Stuart Grant  
Information Directorate  
Department for Work and  
Pensions  
Room BP5201  
Benton Park Road  
Longbenton  
Newcastle-upon-Tyne  
NE98 1YX

Telephone: 0191 2166263  
Email:  
[stuart.grant@dwp.gsi.gov.uk](mailto:stuart.grant@dwp.gsi.gov.uk)

**Next publication:**  
21<sup>st</sup> April 2010

## DWP STATISTICAL SUMMARY

*This Statistical Summary contains statistics produced by the Department for Work and Pensions (DWP) on Housing Benefit / Council Tax Benefit caseload and inactive benefit early estimates. Other monthly outputs may be added in the future – user views on the format of this release are welcome via the contact details in the margin.*



The Housing Benefit / Council Tax Benefit caseload statistics are full National Statistics;

The inactive benefit early estimates are Experimental Statistics – for more information see the notes to editors.

National Statistics for the main DWP benefits are still released on quarterly basis and can be viewed at:

[http://research.dwp.gov.uk/asd/statistical\\_summaries.asp](http://research.dwp.gov.uk/asd/statistical_summaries.asp)

The early estimates for working-age inactive benefit client groups are released monthly and are designed to give indicative, timely information; they are not a substitute for the National Statistics. They will be replaced by the quarterly National Statistics covering the same period when they are published. The National Statistics are the finalised figures.

### Key findings



#### Housing Benefit /Council Tax Benefit

- At December 2009, the total number of people claiming Housing Benefit was 4.61 million, with 5.64 million claiming Council Tax Benefit.
- The total number of people claiming either Housing Benefit or Council Tax Benefit was 6.16 million at December 2009, with 4.09 million claiming both benefits.

Further information can be viewed:

[http://statistics.dwp.gov.uk/asd/asd1/hb\\_ctb/hbctb\\_arc.asp](http://statistics.dwp.gov.uk/asd/asd1/hb_ctb/hbctb_arc.asp)

### Early estimates for inactive benefits

- Experimental statistics show that the working-age Income Support lone parent (ISLP) early estimate is 695 thousand as at the end of January 2010. The latest National Statistic caseload figure for this client group stands at 716 thousand in August 2009.
- Experimental statistics show that the Employment and Support Allowance/incapacity benefits (ESA/IB) early estimate for January 2010 is 2.61 million. The latest National Statistic for this client group stands at 2.63 million claimants in August 2009.

Further information can be viewed:

[http://statistics.dwp.gov.uk/asd/early\\_ests.asp](http://statistics.dwp.gov.uk/asd/early_ests.asp)

## Contents

### 1. Housing Benefit / Council Tax Benefit

	<i>page</i>
1.1 Housing Benefit / Council Tax Benefit recipients: December 2009	3

### 2. Early Estimates for Working-Age Inactive Benefit Client Groups

2.1 Employment and Support Allowance / incapacity benefits client group	4
2.2 Income Support lone parent client group	5
Notes to editors	6



## 1. Housing Benefit / Council Tax Benefit

**Table 1.1 Housing Benefit (HB) / Council Tax Benefit (CTB) recipients: December 2009**

	All HB recipients		All CTB recipients	
	Number (thousands)	Average Award	Number (thousands)	Average Award
<b>TOTAL</b>	<b>4,610.73</b>	<b>£83.21</b>	<b>5,635.24</b>	<b>£15.76</b>
<b>Passported Benefit</b>				
In receipt of JSA (IB), IS, ESA (IB), PC (GC)	3,201.81	£86.06	3,910.62	£16.61
Not in receipt of JSA (IB), IS, ESA (IB), PC (GC)	1,404.68	£76.67	1,708.99	£13.79
<b>Client Group</b>				
Working-Age	3,065.62	£90.10	3,033.44	£15.69
Elderly	1,544.99	£69.65	2,601.67	£15.83
<b>Tenancy Type</b>				
<b>Social Rented Sector</b>	3,243.61	£72.42		
Local Authority Tenants	1,504.53	£67.41		
Registered Social Landlord Tenants	1,739.08	£76.75		
<b>Private Rented Sector</b>	1,363.97	£108.71		
Private Regulated Tenants	51.34	£75.15		
Private Deregulated Tenants:				
Local Housing Allowance Tenants	936.65	£112.76		
Non-Local Housing Allowance Tenants	375.75	£103.30		

*Source: Single Housing Benefit Extract (SHBE)*

**Notes relating to table 1.1:**

- Housing Benefit and Council Tax Benefit recipients are individual claimants who had a live in payment claim on Thursday 10<sup>th</sup> December. Council Tax Benefit recipients exclude Second Adult Rebate cases.
- Passported Benefit and Tenancy Type breakdowns are as recorded within the Local Authorities Housing Benefit/Council Tax Benefit administration systems.
- Client Group breakdown is derived from a combination of information on passported benefit and recipient's age.
- Caseload figures are rounded to the nearest 10. Components may not sum to total due to independent rounding.
- Average award figures are shown as pounds per week and rounded to the nearest penny.
- Local Housing Allowance (LHA) Tenants may include a small number of non-LHA cases making a new claim since 6 April 2008. This will include recipients in caravan accommodation.

Latest statistical data available from: [http://statistics.dwp.gov.uk/asd/asd1/hb\\_ctb/hbctb\\_arc.asp](http://statistics.dwp.gov.uk/asd/asd1/hb_ctb/hbctb_arc.asp)

## 2. Early Estimates for Working-Age Inactive Benefit Client Groups

In the January 2010 first release, we introduced some small changes to the methodology for deriving our early estimates. These changes have improved accuracy, meaning that we can present numbers rounded to five thousand for November 2009 estimates onwards (compared to 10 thousand previously).

### 2.1 Employment and Support Allowance / incapacity benefits (ESA/IB) client group

**Table 2.1** Working-age ESA/IB client group September 2009 to January 2010

Time Series	National Statistic	Early Estimate
	Number of Claimants	Number of Claimants
Nov-08	2,605.51	
Feb-09	2,603.54	
May-09	2,621.43	
Aug-09	2,632.74	
Sep-09		2,630
Oct-09		2,630
Nov-09		2,615
Dec-09		2,615
Jan-10		2,610

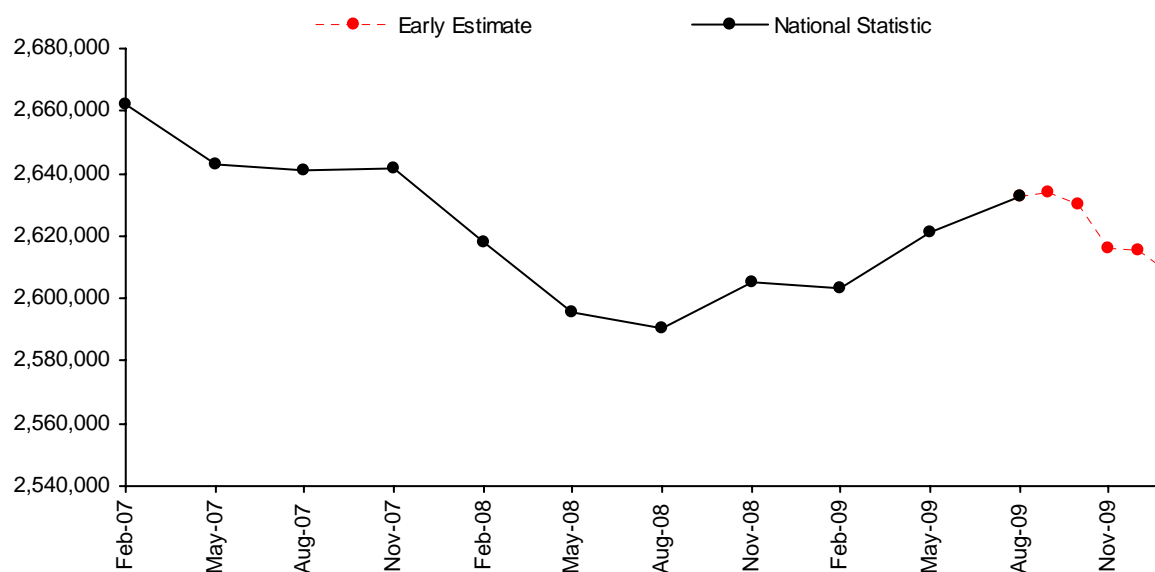
The working-age **ESA/IB** early estimate for January 2010 is **2.61 million** to the nearest 5,000. This represents a fall of 0.9 per cent since August 2009 (the latest National Statistic).

Final figures for the quarter ending November 2009 will be released on 12 May 2010. **The most recent National Statistics show 2.63 million individuals were in the ESA/IB client group at August 2009.**

See: <http://statistics.dwp.gov.uk/asd/tabtool.asp>

The figures are estimates of the final National Statistic, to give an indication of their accuracy, over the past year the early estimates have been revised by an average of 0.2 per cent. See notes to editors for more information.

**Figure 2.1: National Statistics to August 2009 and early estimates of numbers in working age ESA/IB client group: September 2009 to January 2010**



#### Notes relating to figure 2.1 and table 2.1:

1. ESA/IB: From November 2008 ESA replaced IB and Income Support paid on the grounds of incapacity for new claims from 27 October 2008. Prior to this the "incapacity benefits group" referred to claimants of IB or Severe Disablement Allowance including people claiming Income Support on the grounds of incapacity.
2. The red dotted line in the chart above emphasises that the figures are only estimates. Estimates for September and October 2009 are given to the nearest 10,000. Estimates from November 2009 are rounded to the nearest 5,000 following methodological improvements to the estimation process.
3. Source data: *DWP Information Directorate: Work and Pensions Longitudinal Study*
4. When the next quarterly National Statistics are published they will be included as the fourth quarterly National Statistic in Table 2.1, and the monthly early estimate for this quarter will be removed from Table 2.1.

## 2.2 Income Support lone parent (ISLP) client group

**Table 2.2 ISLP client group September 2009 to January 2010**

Time Series	thousands	
	National Statistics	Early Estimate
	Number of Claimants	Number of Claimants
Nov-08	728.98	
Feb-09	736.04	
May-09	720.48	
Aug-09	715.73	
Sep-09		700
Oct-09		690
Nov-09		695
Dec-09		695
Jan-10		695

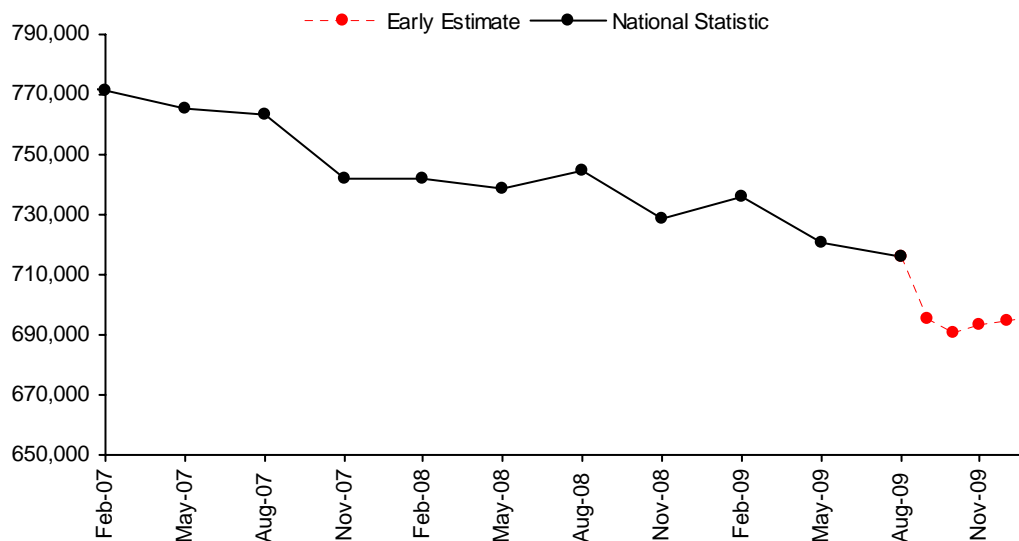
The working-age ISLP early estimate for January 2010 is **695 thousand** to the nearest 5,000. This represents a fall of 2.8 per cent since August 2009 (the latest full National Statistic figure).

National Statistics are available for quarters up to the end of August 2009. Final figures for the quarter ending November 2009 will be released on 12 May 2010. **The most recent National Statistics show 716 thousand individuals were in the ISLP client group at August 2009. See: <http://statistics.dwp.gov.uk/asd/tabtool.asp>**

The number of lone parents claiming Income Support has been affected by the Lone Parent Obligations policy changes which came into effect from 24 November 2008. For more information see notes to editors.

The figures are estimates of the final National Statistic, to give an indication of their accuracy, over the past year the early estimates have been revised by an average of 0.4 per cent. See notes to editors for more information.

**Figure 2.2: National Statistics to August 2009 and early estimates of numbers in working age ISLP client group: September 2009 to January 2010**



### Notes relating to figure 2.2 and table 2.2:

- ISLP: claimants on IS with child under 16 and no partner. New and repeat customers with the following conditions will no longer be entitled to Income Support:
  - A youngest child aged 12 or over from 24 November 2008;
  - A youngest child aged 10 or over from 26 October 2009.
- The red dotted line in the chart above emphasises that the figures are only estimates. Estimates for September and October 2009 are given to the nearest 10,000. Estimates from November 2009 are rounded to the nearest 5,000 following methodological improvements to the estimation process.
- Source data: *DWP Information Directorate: Work and Pensions Longitudinal Study*
- When the next quarterly National Statistics are published they will be included as the fourth quarterly National Statistic in Table 2.2, and the monthly early estimate for this quarter will be removed from Table 2.2.

Latest statistical data available from: [http://statistics.dwp.gov.uk/asd/early\\_ests.asp](http://statistics.dwp.gov.uk/asd/early_ests.asp)

## NOTES TO EDITORS

### 1. Links to further information

For each statistic in this publication, access to more detailed statistics and methodology are available by clicking on the following web links.

Housing Benefit & Council Tax Benefit caseload statistics:

[http://statistics.dwp.gov.uk/asd/asd1/hb\\_ctb/hbctb\\_arc.asp](http://statistics.dwp.gov.uk/asd/asd1/hb_ctb/hbctb_arc.asp)

Early estimates for working-age inactive benefit client groups:

[http://statistics.dwp.gov.uk/asd/early\\_ests.asp](http://statistics.dwp.gov.uk/asd/early_ests.asp)

### 2. Early Estimates

The early estimates are designed to give indicative, timely information ahead of the publication of full National Statistics. They are not a substitute for the National Statistics and will be replaced when the final quarterly National Statistics covering the same period are published.

To give an indication of their accuracy, over the past year the early estimates for ESA/IB have been revised by an average of 0.2 per cent, with the biggest revision being 0.33 percent and the smallest being 0.07 percent. The early estimates for ISLP have been revised by an average of 0.4 per cent, with the biggest revision being 1.06 percent and the smallest being 0.07 percent.

More detailed information can be accessed via the following links:

[http://statistics.dwp.gov.uk/asd/asd1/early\\_ests/technical\\_document\\_final.pdf](http://statistics.dwp.gov.uk/asd/asd1/early_ests/technical_document_final.pdf)

[http://statistics.dwp.gov.uk/asd/asd1/early\\_ests/QandA\\_Early\\_Estimates\\_final.pdf](http://statistics.dwp.gov.uk/asd/asd1/early_ests/QandA_Early_Estimates_final.pdf)

### 3. Local Authority Changes

On 1st April 2009, the reorganisation of the local authorities of England created nine new unitary authorities (UAs). The HB/CTB statistics and children in out-of-work benefit household statistics are presented using the new geographies.

### 4. Welfare Reform

Employment Support Allowance replaced Incapacity Benefit and Income Support paid on the grounds of incapacity on 27 October 2008 for new claims. The figures relating to Employment Support Allowance have been thoroughly quality assured to National Statistics standards. Figures to the reporting period May 2009 were badged as "provisional" reflecting the fact that ESA was a new benefit using a new data source taking some time to reach steady state in terms of operational processing and retrospection. Following further quality assurance, from the reporting period August 2009 onwards, the provisional status has been removed.

The Lone Parent Obligation policy came into effect from 24 November 2008; Lone Parents (LPs) with a youngest child aged 12 or over were no longer able to make a new or repeat claim for Income Support (IS) solely on the basis of their parental status. Existing IS LPs with a youngest child aged 12 or over are having their eligibility removed over a period of time commencing 2 March 2009. From October 2009 this policy was extended to LPs with a youngest child aged 10 or 11 and from October 2010 the policy will be extended to LPs with a youngest child aged 7 or over.

### 5. Other National Statistics issued by the Department for Work and Pensions

Abstract of Statistics for Benefits and Contributions and Indices of Prices and Earnings (annual) – *provides a reference source for those people interested in the main aspects of benefits, contributions and indices of prices and earnings. Latest published figures: [http://statistics.dwp.gov.uk/asd/other\\_stats.asp](http://statistics.dwp.gov.uk/asd/other_stats.asp)*

Appeal Tribunal Statistics (quarterly) – *provides statistics on appeals and decisions. Latest published figures: <http://statistics.dwp.gov.uk/asd/qat.asp>*

Child Support Agency Quarterly Summary of Statistics – *provides statistics on the Child Support Agency. Latest published figures: <http://www.childmaintenance.org/publications/statistics.html>*

DWP Quarterly Statistical Summary – provides summary of all DWP statistical outputs including latest quarterly benefit caseloads. Latest published figures:

[http://statistics.dwp.gov.uk/asd/asd1/stats\\_summary/Stats\\_Summary\\_Nov2009.pdf](http://statistics.dwp.gov.uk/asd/asd1/stats_summary/Stats_Summary_Nov2009.pdf)

Family Resources Survey (annual) - provides information on the incomes and circumstances of private households in the United Kingdom: <http://statistics.dwp.gov.uk/asd/frs>

Households Below Average Income (annual) - provides information on potential living standards as determined by disposable income, changes in income patterns over time and income mobility:

<http://statistics.dwp.gov.uk/asd/hbai.asp>

Housing Benefit and Council Tax Benefit Quarterly Performance Statistics – provides high level statistics on Local Authority processing of Housing Benefit / Council Tax Benefit from quarterly administrative returns and also includes speed of processing new claims and charges of circumstances. Latest published figures:

[http://statistics.dwp.gov.uk/asd/asd1/hb\\_ctb/performance/performance.asp](http://statistics.dwp.gov.uk/asd/asd1/hb_ctb/performance/performance.asp)

Housing Benefit Quarterly Fraud Performance Statistics – provides high level statistics on Local Authority fraud performance from quarterly administrative returns and also includes numbers of referrals, investigations actioned and sanctions administered. Latest published figures:

[http://statistics.dwp.gov.uk/asd/asd1/hb\\_ctb/performance/performance.asp](http://statistics.dwp.gov.uk/asd/asd1/hb_ctb/performance/performance.asp)

Industrial Injuries Disablement Benefit and Reduced Earnings Allowance Statistics (annual) – provides statistics on current assessments and movements during statistical period. Latest published figures:

<http://statistics.dwp.gov.uk/asd/iidb.asp>

Industrial Injuries Disablement Benefit Quarterly Summary of Statistics – provides statistics on people in receipt of Industrial Injuries Disablement Benefit, new claims and newly diagnosed prescribed diseases. Latest published figures:

<http://statistics.dwp.gov.uk/asd/iidb.asp>

National Insurance numbers allocated to overseas nationals (Previously migrant workers statistics – quarterly) provides statistics on migrant workers. Latest published figures:

[http://statistics.dwp.gov.uk/asd/tabtool.asp#ni\\_alloc](http://statistics.dwp.gov.uk/asd/tabtool.asp#ni_alloc)

Neighbourhood Statistics – Quarterly ward and Lower Super Outputs Area caseloads for Income Support, Jobseeker's Allowance, Incapacity Benefits, Disability Living Allowance, Attendance Allowance, Pension Credit and State Pension are available from: <http://83.244.183.180/NESS/page1.htm>

Pensioner Income Series (annual) - examines the levels, sources and distribution of pensioners' incomes and the position of pensioners within the population income distribution. Latest published figures:

[http://statistics.dwp.gov.uk/asd/asd6/pensioners\\_income.asp](http://statistics.dwp.gov.uk/asd/asd6/pensioners_income.asp)

Second Tier Pension Provision (annual) – contains analysis of contracted out pension schemes. Latest published figures: [http://statistics.dwp.gov.uk/asd/asd1/dsu/second\\_tier/second\\_tier.asp](http://statistics.dwp.gov.uk/asd/asd1/dsu/second_tier/second_tier.asp)

Tax/Benefit Model Tables (annual) – designed to illustrate the weekly financial circumstances of a selection of hypothetical local authority and private tenants. Latest published figures:

<http://statistics.dwp.gov.uk/asd/tbmt.asp>

## **6. Other statistical outputs issued by the Department for Work and Pensions**

Benefit Expenditure Tables - financial year historic information on benefit expenditure and caseloads, along with forecasts are available from <http://statistics.dwp.gov.uk/asd/asd4/expenditure.asp>

Six Month Offer Statistics - a support package offering up to 500,000 opportunities for Jobseeker's Allowance customers reaching six months unemployment. Latest published figures:

[http://research.dwp.gov.uk/asd/6month\\_offer.asp](http://research.dwp.gov.uk/asd/6month_offer.asp)

Employment and Support Allowance - work capability assessment statistics. Latest published figures:

[http://research.dwp.gov.uk/asd/workingage/esa\\_wca/esa\\_wca\\_arc.asp](http://research.dwp.gov.uk/asd/workingage/esa_wca/esa_wca_arc.asp)

Pathways to Work Officials Statistics - Pathways to Work comprises a comprehensive range of support and provision designed to improve customers' prospects of returning to work. Latest published figures:

[http://research.dwp.gov.uk/asd/workingage/ib\\_ref\\_p2w.asp](http://research.dwp.gov.uk/asd/workingage/ib_ref_p2w.asp)