

First Release

DWP STATISTICAL SUMMARY

This Statistical Summary contains statistics produced by the Department for Work and Pensions (DWP) on Housing Benefit / Council Tax Benefit caseload and inactive benefit early estimates.



The Housing Benefit / Council Tax Benefit caseload statistics are full National Statistics;

The working age inactive benefit early estimates are official statistics;
The Flexible New Deal monthly statistics are official statistics.

National Statistics for the main DWP benefits are released on quarterly basis and can be viewed at: http://research.dwp.gov.uk/asd/index.php?page=statistical_summaries

The early estimates for working-age inactive benefit client groups are released monthly and are designed to give indicative, timely information; they are not a substitute for the National Statistics. They will be replaced by the quarterly National Statistics covering the same period when they are published. The National Statistics are the finalised figures.

Due to unforeseen technical problems the **DWP Quarterly Statistical Summary, due for release on 16 February 2011, has been delayed until 16th March 2011**. For subsequent releases, we will resume the usual pattern.

In place of the delayed DWP February statistical release (16th February) we plan to publish only our usual monthly release. This will contain early estimates for inactive benefits; Housing Benefit and Council Tax Benefit statistics; and a link to the Delivery Directorate Performance Report (containing Flexible New Deal statistics). We will also release statistics for Winter Fuel Payments for households for winter 2009/10 by 2010 Parliamentary Constituencies.

For more details, see News and Announcements

If you would like to receive occasional e-mails from DWP to directly inform you of similar such issues with the Summary, please email general.statistics@dwp.gsi.gov.uk giving details of the DWP publications you use.

19th January 2011

Coverage: Great Britain

Theme: People and Places

DWP Department for
Work and Pensions

Issued by:

Information Directorate
Department for Work and
Pensions

Telephone:
Press Office: 0203 267 5144

Website:
www.dwp.gov.uk

Statistician:

Stuart Grant
Information Directorate
Department for Work and
Pensions
Room BP5201
Benton Park Road
Longbenton
Newcastle-upon-Tyne
NE98 1YX

Telephone: 0191 2166263
Email:
stuart.grant@dwp.gsi.gov.uk

Next publication:

16th February 2011

Key findings



Housing Benefit /Council Tax Benefit

- At October 2010, the total number of people claiming Housing Benefit was 4.79 million, with 5.79 million claiming Council Tax Benefit.
- The total number of people claiming either Housing Benefit or Council Tax Benefit was 6.32 million at October 2010, with 4.26 million claiming both benefits.
- At October 2010, 3.81 million Housing Benefit recipients were single, with almost two-thirds of these being female. Of the 1.60 million recipients with at least one child dependant, just over 1.1 million of these were single.

Further information can be viewed:

<http://research.dwp.gov.uk/asd/index.php?page=hbctb> and
http://research.dwp.gov.uk/asd/asd1/hb_ctb/index.php?page=hbctb_arc

Early estimates for inactive benefits [OFFICIAL STATISTICS]

- Experimental official statistics show that the Employment and Support Allowance/ incapacity benefits (ESA/IB) early estimate for November 2010 is 2.585 million. The latest National Statistic for this client group stands at 2.613 million claimants in May 2010.
- Experimental official statistics show that the working-age Income Support lone parent (ISLP) early estimate is 645 thousand as at the end of November 2010. The latest National Statistic caseload figure for this client group stands at 679 thousand in May 2010.

Further information can be viewed:

http://research.dwp.gov.uk/asd/index.php?page=early_ests

Flexible New Deal [OFFICIAL STATISTICS]

- A Flexible New Deal (FND) performance report, containing official statistics broken down to contract level, and an information document containing methodology and technical definitions can be found at the following link:

<http://statistics.dwp.gov.uk/asd/index.php?page=ddfnd>

Contents

1. Housing Benefit / Council Tax Benefit

	<i>page</i>
1.1 Housing Benefit / Council Tax Benefit recipients	3

2. Early Estimates for Working-Age Inactive Benefit Client Groups

2.1 Employment and Support Allowance / incapacity benefits client group	6
2.2 Income Support lone parent client group	7
Notes	8

1. National Statistics: Housing Benefit / Council Tax Benefit

Table 1.1 Housing Benefit (HB) / Council Tax Benefit (CTB) recipients: October 2010

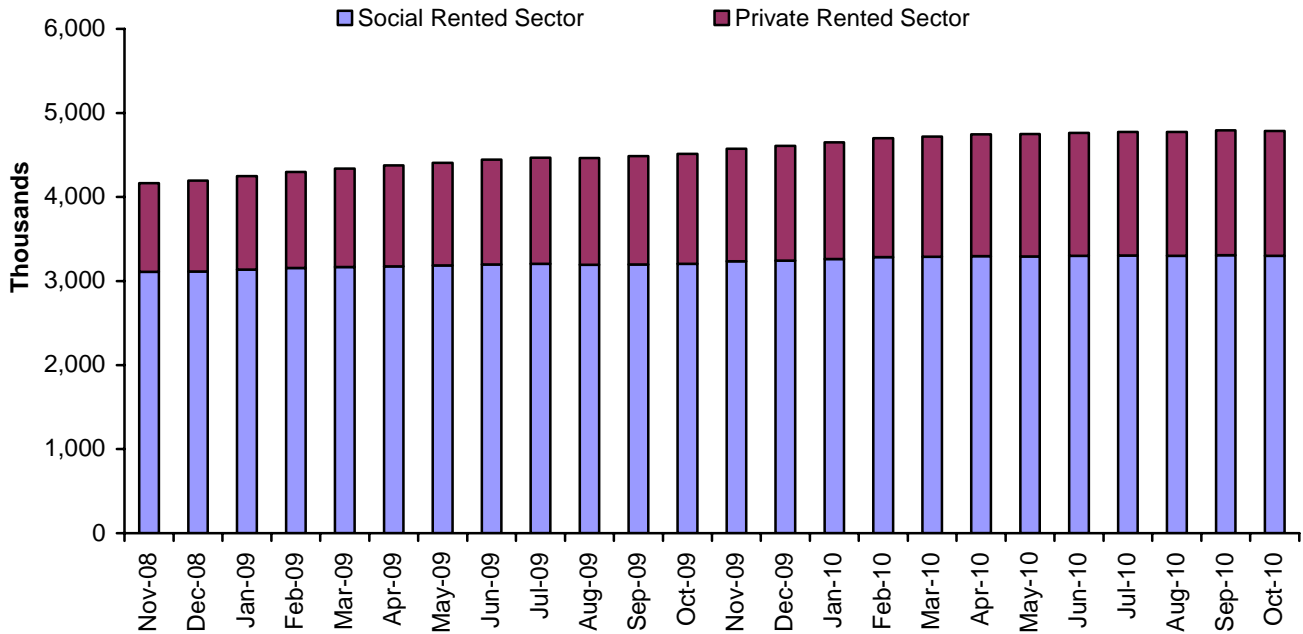
	All HB recipients		All CTB recipients	
	Number (thousands)	Average Award (£pw)	Number (thousands)	Average Award (£pw)
TOTAL	4,789.49	84.50	5,794.77	15.89
Passported Benefit				
In receipt of JSA (IB), IS, ESA (IB), PC (GC)	3,233.31	87.74	3,929.21	16.87
Not in receipt of JSA (IB), IS, ESA (IB), PC (GC)	1,553.25	77.70	1,857.31	13.81
Family Type				
Single, no child dependant	2,699.99	76.38	3,268.71	14.72
Single with child dependant(s)	1,110.03	101.04	1,084.63	15.33
Couple, no child dependant	489.22	72.17	911.94	18.91
Couple with child dependant(s)	490.25	103.63	529.49	19.11
Client Group				
Aged under 65	3,511.88	89.70	3,572.29	15.81
Aged 65 or over	1,277.44	70.27	2,222.30	16.02
Tenancy Type				
Social Rented Sector				
Local Authority Tenants	1,500.34	67.40		
Registered Social Landlord Tenants	1,799.28	77.16		
Private Rented Sector				
Private Regulated Tenants	47.72	77.59		
Private Deregulated Tenants:				
Local Housing Allowance Tenants	1,132.40	113.77		
Non-Local Housing Allowance Tenants	307.10	103.77		

Source: Single Housing Benefit Extract (SHBE)

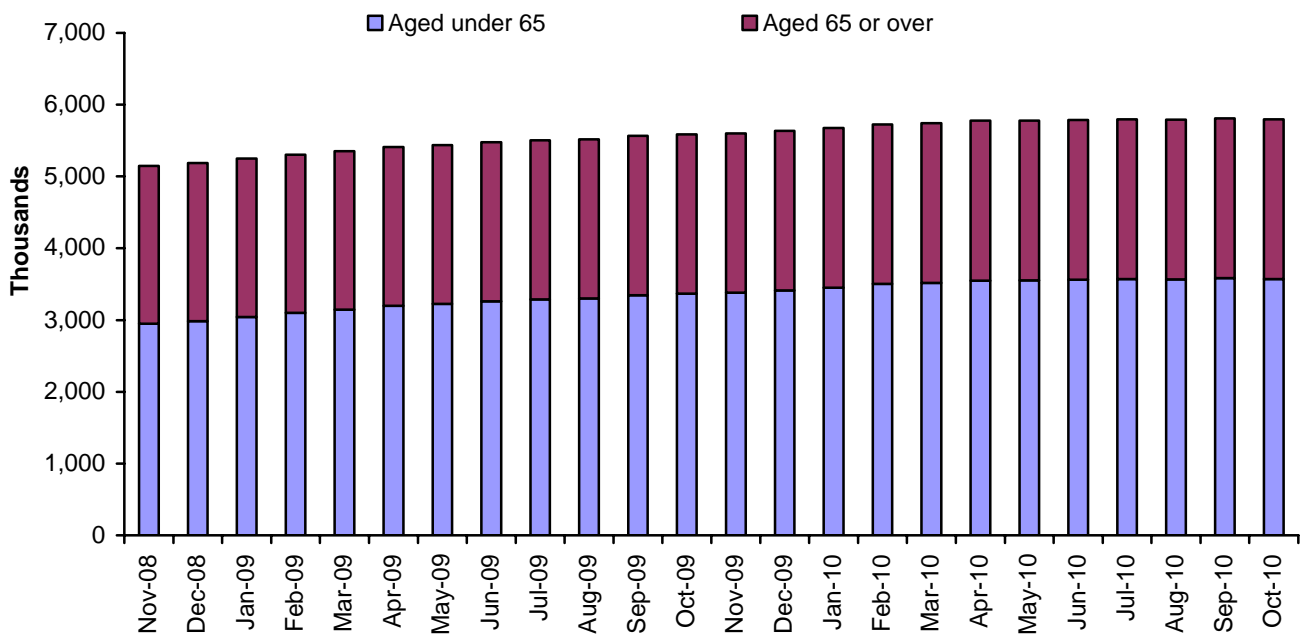
Notes relating to table 1.1:

- Housing Benefit and Council Tax Benefit recipients are individual claimants who had a live in payment claim on Thursday 14th October. Council Tax Benefit recipients exclude Second Adult Rebate cases.
- Passported Benefit and Tenancy Type breakdowns are as recorded within the Local Authorities Housing Benefit/Council Tax Benefit administration systems.
- Family Type breakdown was new in the June 2010 release. It is derived from a combination of information on recipients' partners and number of child dependants.
- Client Group breakdown is derived from a combination of information on passported benefit and recipient's age.
- Caseload figures are rounded to the nearest 10. Components may not sum to total due to independent rounding.
- Average award figures are shown as pounds per week and rounded to the nearest penny.
- Local Housing Allowance (LHA) Tenants may include a small number of non-LHA cases making a new claim since 6 April 2008. This will include recipients in caravan accommodation.

Housing Benefit Recipients: November 2008 to October 2010



Council Tax Benefit Recipients: November 2008 to October 2010



Latest statistical data available from: <http://research.dwp.gov.uk/asd/index.php?page=hbctb>

2. Official Statistics: Early Estimates for Working-Age Inactive Benefit Client Groups

2.1 Employment and Support Allowance / incapacity benefits (ESA/IB) client group

Table 2.1: Working-age ESA/IB client group May 2009 to November 2010

Time Series	National Statistic	Early Estimate
	Number of Claimants	Number of Claimants
May-09	2,621.43	
Aug-09	2,632.74	
Nov-09	2,618.38	
Feb-10	2,614.76	
May-10	2,613.10	
Jun-10		2,615
Jul-10		2,605
Aug-10		2,605
Sep-10		2,595
Oct-10		2,590
Nov-10		2,585

The working-age **ESA/IB** early estimate for November 2010 is **2.585 million** to the nearest 5,000. This represents a fall of 1.0 per cent since May 2010 (the latest National Statistic).

Final figures for the quarter ending August 2010 will be released on 16th March 2011. **The most recent National Statistics show 2.61 million individuals were in the ESA/IB client group at May 2010.**

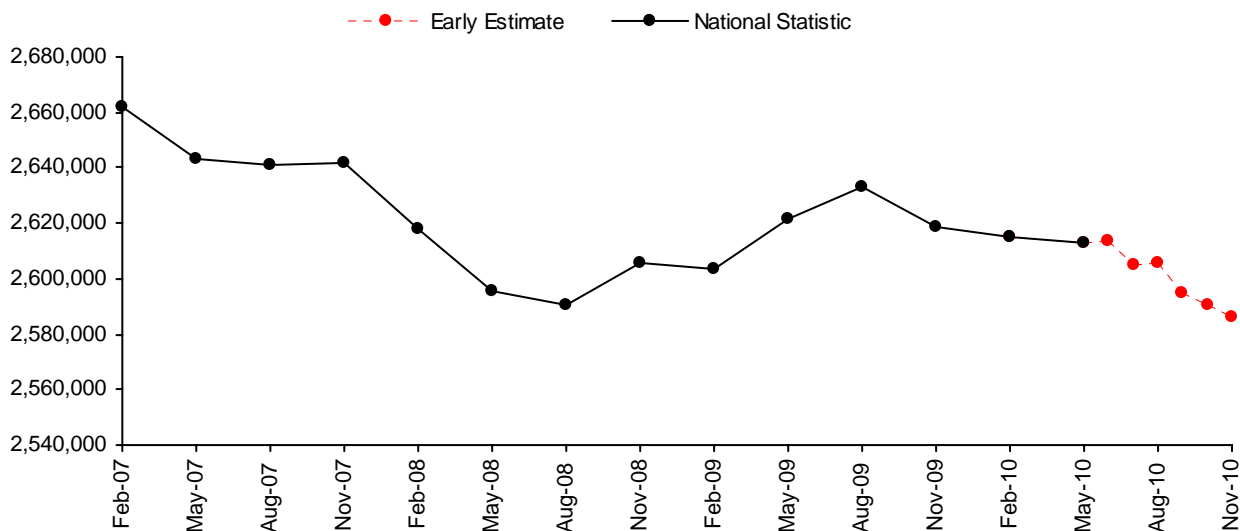
See:

<http://research.dwp.gov.uk/asd/index.php?page=tabtool>

These figures are estimates of the final National Statistic, to give an indication of their accuracy, over the past year the early estimates have been revised by an average of 0.1 per cent. See notes section for more information.

The age at which women reach State Pension age will gradually increase from 60 to 65 between April 2010 and April 2020. Please see the Welfare Reform section of the notes for further information.

Figure 2.1: National Statistics to May 2010 and early estimates of numbers in working age ESA/IB client group: June 2010 to November 2010



Notes relating to figure 2.1 and table 2.1:

1. ESA/IB: From November 2008 ESA replaced Incapacity Benefit (IB) and Income Support paid on the grounds of incapacity for new claims from 27 October 2008. Prior to this the "incapacity benefits group" referred to claimants of IB or Severe Disablement Allowance including people claiming Income Support on the grounds of incapacity.
2. The red dotted line in the chart above emphasises that the figures are estimates and official statistics.
3. Source data: *DWP Information Directorate: Work and Pensions Longitudinal Study*
4. When the next quarterly National Statistics are published they will be included as a National Statistic in Table 2.1, and the monthly early estimates for this quarter will be removed from Table 2.1.

2.2 Income Support lone parent (ISLP) client group

Table 2.2 ISLP client group May 2009 to November 2010

Time Series	thousands	
	National Statistics	Early Estimate
May-09	720.48	
Aug-09	715.73	
Nov-09	695.72	
Feb-10	692.02	
May-10	679.15	
Jun-10		675
Jul-10		675
Aug-10		670
Sep-10		665
Oct-10		660
Nov-10		645

The working-age ISLP early estimate for November 2010 is **645 thousand** to the nearest 5,000. This represents a fall of 4.7 per cent since May 2010 (the latest National Statistic).

National Statistics are available for quarters up to the end of May 2010. Final figures for the quarter ending August 2010 will be released on 16th March 2011. **The most recent National Statistics show 679 thousand individuals were in the ISLP client group at May 2010.** See: <http://research.dwp.gov.uk/asd/index.php?page=tabtool>

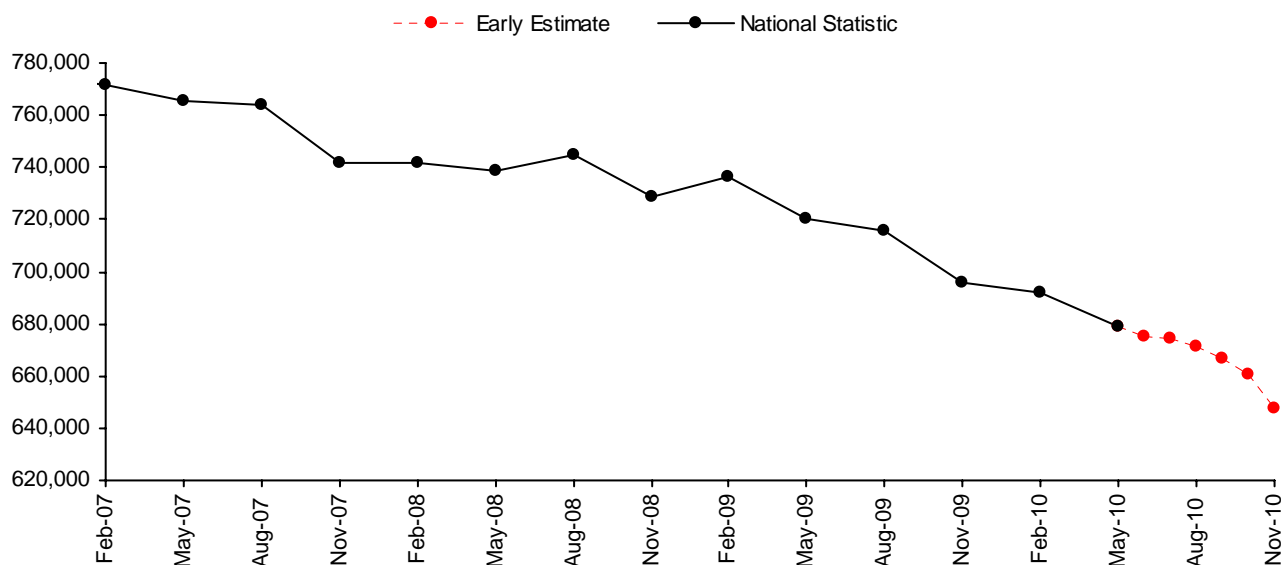
The number of lone parents claiming Income Support has been affected by the Lone Parent Obligations policy changes which came into effect from 24 November 2008. For more information see the notes section.

The figures are estimates of the final National Statistic, to give an indication of their accuracy, over the past year the early estimates have been revised by an average of 0.5 per cent. See the notes section for more information.

The age at which women reach State Pension age will gradually increase from 60 to 65 between April 2010 and

April 2020. Please see the Welfare Reform section of the Notes for further information.

Figure 2.2: National Statistics to May 2010 and early estimates of numbers in working age ISLP client group: June 2010 to November 2010



Notes relating to figure 2.2 and table 2.2:

- ISLP: claimants on IS with child under 16 and no partner. New and repeat customers with the following conditions will no longer be entitled to Income Support:
 - A youngest child aged 12 or over from November 2008;
 - A youngest child aged 10 or over from October 2009;
 - A youngest child aged 7 or over from October 2010.
- The red dotted line in the chart above emphasises that the figures are estimates and official statistics.
- Source data: *DWP Information Directorate: Work and Pensions Longitudinal Study*
- When the next quarterly National Statistics are published they will be included as a quarterly National Statistic in Table 2.2, and the monthly early estimates for this quarter will be removed from Table 2.2.

Latest statistical data available from: http://research.dwp.gov.uk/asd/index.php?page=early_ests

NOTES

1. The Statistical Summary

The Department for Work and Pensions (DWP) publish a Statistical Summary document each month. It is used for the release of a wide range of DWP statistics

The DWP Statistical Summary brings together key National Statistics on DWP administered benefits, some employment programmes and JSA (Jobseeker's Allowance) sanctions and vacancies. To provide a more complete picture of DWP responsibility, statistics on Housing Benefit and Council Tax Benefit (administered by Local Authorities) and the Child Support Agency are also included.

The Summary is published monthly, containing Housing Benefit and Council Tax Benefit National Statistics together with official statistics giving early estimates of inactive benefit caseloads, plus a link to the latest report on Flexible New Deal. Each quarter (in May, August, November and February), a larger document also contains the detail of DWP administered benefits, some employment programmes, JSA sanctions, vacancies and the Child Support Agency.

Alongside the Statistical Summary, there are a large number of tables which enable the user to delve in to the detail. These are provided to the user as:

- The DWP Tabulation Tool – for DWP administered benefits and employment programmes the Tabulation Tool provides the user with an interactive tool to select one of thousands of possible tabulations. This is available at: <http://research.dwp.gov.uk/asd/index.php?page=tabtool>. A similar Tabulation Tool, derived from 5% sample data, is also available. Whenever possible, 100% data should be used in preference to 5% estimates, as these are both more accurate and form DWP's headline statistics. Some statistics remain outside the scope of the Tabulation Tool but will continue to be available via the internet as pre-defined summary tables.
- Identical numbers via Nomis (<https://www.nomisweb.co.uk/Default.asp>)
- Separate detailed tables on Housing Benefit and Council Tax Benefit; Employment and Support Allowance; Claimants on out of work benefits
- Tables broken down by Lower Super Output Area (LSOA)
- A Flexible New Deal (FND) performance report, containing figures broken down to contract level
- Other tables and background information via links on the Tabulation Tool pages (e.g. links to long time series spreadsheets; descriptions of the benefit.)

The National Statistics paper "DWP statistics transformed: the modernisation of the DWP's data sources and statistical publications" announced major changes to the National Statistics the Department publishes in 2005. Much of this content is still relevant and is available from:

http://statistics.dwp.gov.uk/asd/asd1/stats_consultation/modstats.pdf

2. Statistical groups

DWP has a typology to define Statistical Groups within the client group classifications. The aim of the Statistical Group typology is to present each person by the main reasons they are in contact with the Department. Like the client group classification, each client is classified just once, permitting the estimation of the total number of people claiming one or more benefits. The Statistical Group hierarchy is:

a] Jobseeker	e] Other income-related benefits
b] Employment and Support Allowance and incapacity benefits	f] Disabled
c] Lone parents	g] Bereaved
d] Carers	h] Housing Benefit
	i] State Pension only recipients

From November 2008 the "incapacity benefits statistical group" includes Employment and Support Allowance (ESA). ESA replaced Incapacity Benefit and Income Support paid on the grounds of incapacity for new claims from 27th October 2008. Prior to this the "incapacity benefits group" covered people on Incapacity Benefit or Severe Disablement Allowance, including people claiming Income Support on the grounds of incapacity.

3. Jobseeker's Allowance figures at ONS

The preferred source of numbers for Jobseeker's Allowance is the ONS claimant count figure; these are more up to date and contain clerical cases. However, the reason we use the DWP JSA figures is that they are consistent with the other benefits used to produce DWP National Statistics, and permit a wider set of breakdowns. The ONS figures are available from <http://www.statistics.gov.uk/>.

4. Flows on and off benefit

Also available are quarterly experimental figures on flows on and off all the main benefits. The historic flows information is available on the tabulation tool up to February 2008. Pension Credit information is available via a one-click table: http://83.244.183.180/100pc/pc/tabtool_pc.html

5. Early Estimates

The official statistics giving Early Estimates are designed to give indicative, timely information ahead of the publication of full National Statistics. They are not a substitute for the National Statistics and will be replaced when the final quarterly National Statistics covering the same period are published.

To give an indication of their accuracy, over the past year the early estimates for ESA/IB have been revised by an average of 0.1%, with the biggest revision being 0.35% and the smallest being 0.01%. The early estimates for ISLP have been revised by an average of 0.5%, with the biggest revision being 1.06% and the smallest being 0.01%.

More detailed information can be accessed via the following links:

http://statistics.dwp.gov.uk/asd/asd1/early_ests/technical_document_final.pdf

http://statistics.dwp.gov.uk/asd/asd1/early_ests/QandA_Early_Estimates_final.pdf

6. Welfare Reform

The Lone Parent Obligation policy came into effect from 24 November 2008; Lone Parents (LPs) with a youngest child aged 12 or over were no longer able to make a new or repeat claim for Income Support (IS) solely on the basis of their parental status. Existing IS LPs with a youngest child aged 12 or over are having their eligibility removed over a period of time commencing 2 March 2009. From October 2009 this policy was extended to LPs with a youngest child aged 10 or 11; from October 2010 the policy was extended to LPs with a youngest child aged 7 or over.

Most effected LPs will leave IS and claim Jobseeker's Allowance (JSA). However, there are exceptions to these rules where the youngest child can legitimately be over the ages mentioned above. Similarly, some former LPs remain on IS for other reasons (e.g. they have a long term caring responsibility and claim Carer's Allowance). Through analysis of the effected claimants over the next quarters, it can be decided if there is a requirement to change the structure of IS LP statistics. In the meantime, the IS LP series will continue to be defined as 'single IS claimants with a child under 16'.

Employment programme policy is changing, with the intention to move to a new Work Programme. In the interim both earlier new deals and Flexible New Deal (FND) are running concurrently. There will be no gaps in provision between the end of Flexible New Deal and the start of the Work Programme. Since FND was introduced in October 2009 there have been no people starting on other JSA employment programmes in FND areas. This has had a significant impact on existing JSA programme statistics (including the New Deals for Young People, 25 plus, 50 plus and Employment Zones). More information on the policy changes, and about any resulting changes to statistical publications will be made available as soon as plans are finalised. Headline figures on starts and jobs will be released as part of the Quarterly Statistical Summary release. More detailed FND breakdowns (contract level) are available in a new Performance Report which can be accessed via this link: <http://statistics.dwp.gov.uk/asd/index.php?page=ddfnd>

The age at which women reach State Pension age will gradually increase from 60 to 65 between April 2010 and April 2020. The government has announced new proposals for increasing State Pension age which would mean women's State Pension age would increase more quickly to 65 between April 2016 and November 2018. Then, from December 2018, the State Pension age for both men and women would start to increase to reach 66 by April 2020. These changes will introduce a small increase to the number of working age benefit recipients and a small reduction to the number of pension age recipients. There will also be changes to the way we report benefit recipients as a proportion of the working population. More information can be found at: <http://statistics.dwp.gov.uk/asd/espa.pdf>. For general information about the change to State Pension age, please see:

http://www.direct.gov.uk/en/Pensionsandretirementplanning/StatePension/DG_4017919

7. Known Issues, Changes and Revisions to the Statistical Summary

On 19 January 2011:

- None

8. Notification of future changes to the Summary

Due to unforeseen technical problems the DWP Quarterly Statistical Summary, due for release on 16 February 2011, has been delayed until 16th March 2011. For subsequent releases, we will resume the usual pattern.

In place of the delayed DWP February statistical release (16th February) we plan to publish only our usual monthly release. This will contain early estimates for inactive benefits; Housing Benefit and Council Tax Benefit statistics; and a link to the Delivery Directorate Performance Report (containing Flexible New Deal statistics). We will also release statistics for Winter Fuel Payments for households for winter 2009/10 by 2010 Parliamentary Constituencies.

On 16 February 2011:

- Release of Winter Fuel Payments for households for winter 2009/10 by 2010 Parliamentary Constituencies.
- Minor changes to the presentation of Housing Benefit and Council Tax Benefit trends

On 16 March 2011:

- Reinstatement of the benefit flows Tabulation Tools (http://research.dwp.gov.uk/asd/index.php?page=tabtool#benefit_flows) including a back series of unpublished quarters including ESA flows for the first time as part of Tabulation Tool functionality
- Reinstatement of the employment programmes "Jobs" tools and "Immediate Destination on Leaving" breakdown.
- No further updating of the New Deal 25 Plus or the New Deal for Young People Tabulation Tools: In Spring 2010, a decision was taken to extend contracts with external providers who deliver NDYP and ND25+ provision which had been due to end. This reflects the decision to cancel the planned introduction of Phase 2 of Flexible New Deal. Since the contracts were extended, contingency software fixes have been adopted to enable customers to be referred to NDYP and ND25+ provision as per the policy intent. These fixes have had a knock-on impact on the recorded figures as processes currently being followed by some customers do not strictly match the NDYP and ND25+ models. In practice, this means that most starts to ND25+ and NDYP in Phase 2 areas since 16 August 2010 are excluded from these tables. In this release, reported starts to NDYP are around 7% lower in the latest month than expected; similarly, reported starts to ND25+ are around 1% lower in the last month than expected. Hence, these statistics should be used with caution. Unfortunately, it is not possible to correct this issue during the remaining lifetime of ND25+ and NDYP. So, future releases of these statistics would be severely affected by this problem. Hence, DWP propose that there will be no further release of statistics for ND25+ and NDYP.

9. Social Security and Child Support Appeals Tribunal (SSCSA)

The Independent Tribunal Service was introduced in 1984 to provide an independent appeals system. It was replaced by the Appeals Service (tAS) in April 2000. From 1st April 2006 the Appeals Service, was renamed as the Social Security and Child Support Appeals Tribunal (SSCSA) and became part of The Tribunals Service (an Executive agency within the Department for Justice).

Responsibility for publishing statistics on the appeals now resides with The Tribunals Service and they publish statistical information via their website <http://www.tribunals.gov.uk/>.

10. Fraud and Error statistics

National Statistics are published presenting six-monthly estimates of fraud and error in claims for Income Support, Jobseeker's Allowance, Pension Credit and Housing Benefit, along with an annual estimate of the level of fraud and error in the benefit system as a whole. One-off benefit reviews have been carried out from time to time to estimate fraud and error in claims for other benefits. Reports can be found at http://research.dwp.gov.uk/asd/asd2/index.php?page=fraud_error

11. Take-Up of Income-Related Benefits

Publications contain information on the take-up of the main income-related benefits in Great Britain: Income Support, Pension Credit, Housing Benefit, Council Tax Benefit, Employment and Support Allowance (income related) and Jobseeker's Allowance (income based). Take-up is measured in two ways. Expenditure take-up compares the total amount of benefit received in the course of a year with the total amount that would have

been received if everyone took up their entitlement for the full period of entitlement. Caseload take-up compares the number of benefit claimants – averaged over the year – with the number who would be receiving if everyone took up their entitlement for the full period of entitlement. Data is sourced from the Family Resources Survey and administrative benefit records. Latest published figures are available at <http://statistics.dwp.gov.uk/asd/index.php?page=irb>

12. Other National Statistics issued by the Department for Work and Pensions

Abstract of Statistics for Benefits and Contributions and Indices of Prices and Earnings (annual) – *provides a reference source for those people interested in the main aspects of benefits, contributions and indices of prices and earnings. Latest published figures:* <http://statistics.dwp.gov.uk/asd/index.php?page=abstract>

Child Support Agency Quarterly Summary of Statistics – *provides statistics on the Child Support Agency. Latest published figures:* <http://statistics.dwp.gov.uk/asd/index.php?page=csa>

Family Resources Survey (annual) - *provides information on the incomes and circumstances of private households in the United Kingdom:* <http://statistics.dwp.gov.uk/asd/frs/index.php?page=intro>

Households Below Average Income (annual) - *provides information on potential living standards as determined by disposable income, changes in income patterns over time and income mobility:* <http://statistics.dwp.gov.uk/asd/index.php?page=hbai>

Industrial Injuries Disablement Benefit Quarterly Summary of Statistics – *provides statistics on people in receipt of Industrial Injuries Disablement Benefit, new claims and newly diagnosed prescribed diseases. Latest published figures:* <http://statistics.dwp.gov.uk/asd/index.php?page=iidb>

National Insurance numbers allocated to overseas nationals (Previously migrant workers statistics – quarterly) *provides statistics on migrant workers. Latest published figures:* http://statistics.dwp.gov.uk/asd/asd1/niall/index.php?page=nino_allocation

Neighbourhood Statistics – *Quarterly ward and Lower Super Outputs Area caseloads for Income Support, Jobseeker's Allowance, Incapacity Benefits, Disability Living Allowance, Attendance Allowance, Pension Credit and State Pension are available from:* <http://83.244.183.180/NESS/page1.htm>

Pensioner Income Series (annual) - *examines the levels, sources and distribution of pensioners' incomes and the position of pensioners within the population income distribution. Latest published figures:* http://statistics.dwp.gov.uk/asd/index.php?page=pensioners_income

National Insurance Contributions & Qualifying Years and Second Tier Pension Provision (annual) – *contains analysis of National Insurance contributions and contracted out pension schemes. Latest published figures:* http://statistics.dwp.gov.uk/asd/index.php?page=stpp_cq

Tax/Benefit Model Tables (annual) – *designed to illustrate the weekly financial circumstances of a selection of hypothetical local authority and private tenants. Latest published figures:* <http://statistics.dwp.gov.uk/asd/index.php?page=tbmt>

13. Other statistical outputs issued by the Department for Work and Pensions

Benefit Expenditure Tables - *financial year historic information on benefit expenditure and caseloads, along with forecasts are available from:* <http://statistics.dwp.gov.uk/asd/asd4/index.php?page=expenditure>

Employment and Support Allowance - *work capability assessment statistics. Latest published figures:* http://statistics.dwp.gov.uk/asd/workingage/index.php?page=esa_wca

Pathways to Work Officials Statistics - *a comprehensive range of support and provision designed to improve customers' prospects of returning to work. Latest published figures:* http://statistics.dwp.gov.uk/asd/workingage/index.php?page=ib_ref_p2w

Six Month Offer Statistics - *a support package offering up to 500,000 opportunities for Jobseeker's Allowance customers reaching six months unemployment. Latest published figures:* http://statistics.dwp.gov.uk/asd/index.php?page=6month_offer