

# First Release

## DWP STATISTICAL SUMMARY

*This Statistical Summary contains statistics produced by the Department for Work and Pensions (DWP) on Housing Benefit / Council Tax Benefit caseload and inactive benefit early estimates.*



The Housing Benefit / Council Tax Benefit caseload statistics are full National Statistics;

The working age inactive benefit early estimates are official statistics;  
The Flexible New Deal monthly statistics are official statistics.

National Statistics for the main DWP benefits are released on quarterly basis and can be viewed at: [http://research.dwp.gov.uk/asd/index.php?page=statistical\\_summaries](http://research.dwp.gov.uk/asd/index.php?page=statistical_summaries)

The early estimates for working-age inactive benefit client groups are released monthly and are designed to give indicative, timely information; they are not a substitute for the National Statistics. They will be replaced by the quarterly National Statistics covering the same period when they are published. The National Statistics are the finalised figures.

Due to unforeseen technical problems the **DWP Quarterly Statistical Summary, due for release on 16th February 2011, has been delayed until 16th March 2011**. For subsequent releases, we will resume the usual pattern.

In place of the delayed DWP February statistical release (16th February) we are publishing our usual monthly release. This will contain early estimates for inactive benefits; Housing Benefit and Council Tax Benefit statistics; and a link to the Delivery Directorate Performance Report (containing Flexible New Deal statistics). We are also releasing statistics for Winter Fuel Payments for households for winter 2009/10 by 2010 Parliamentary Constituencies.

For more details, see [News and Announcements](#)

If you would like to receive occasional e-mails from DWP to directly inform you of similar such issues with the Summary, please email [general.statistics@dwp.gsi.gov.uk](mailto:general.statistics@dwp.gsi.gov.uk) giving details of the DWP publications you use.

## Key findings



### Housing Benefit /Council Tax Benefit

- At November 2010, the total number of people claiming Housing Benefit was 4.80 million, with 5.80 million claiming Council Tax Benefit.
- The total number of people claiming either Housing Benefit or Council Tax Benefit was 6.33 million at November 2010, with 4.26 million claiming both benefits.
- At November 2010, 3.82 million Housing Benefit recipients were single, with almost two-thirds of these being female. Of the 1.61 million recipients with at least one child dependant, just over 1.11 million of these were single.
- This release includes tables showing experimental official statistics on Housing Benefit and Council Tax Benefit flows.

Further information can be viewed at:

<http://research.dwp.gov.uk/asd/index.php?page=hbctb> and  
[http://research.dwp.gov.uk/asd/asd1/hb\\_ctb/index.php?page=hbctb\\_arc](http://research.dwp.gov.uk/asd/asd1/hb_ctb/index.php?page=hbctb_arc)

16<sup>th</sup> February 2011

Coverage: Great Britain

Theme: People and Places

**DWP** Department for  
Work and Pensions

### Issued by:

Information Directorate  
Department for Work and  
Pensions

Telephone:  
Press Office: 0203 267 5144

Website:  
[www.dwp.gov.uk](http://www.dwp.gov.uk)

### Statistician:

Stuart Grant  
Information Directorate  
Department for Work and  
Pensions  
Room BP5201  
Benton Park Road  
Longbenton  
Newcastle-upon-Tyne  
NE98 1YX

Telephone: 0191 216 6263  
Email:  
[stuart.grant@dwp.gsi.gov.uk](mailto:stuart.grant@dwp.gsi.gov.uk)

### Next publication:

16<sup>th</sup> March 2011

### **Early estimates for inactive benefits [OFFICIAL STATISTICS]**

- Experimental official statistics show that the Employment and Support Allowance/ incapacity benefits (ESA/IB) early estimate for December 2010 is 2.580 million. The latest National Statistic for this client group stands at 2.613 million claimants in May 2010.
- Experimental official statistics show that the working-age Income Support lone parent (ISLP) early estimate is 640 thousand as at the end of December 2010. The latest National Statistic caseload figure for this client group stands at 679 thousand in May 2010.

Further information can be viewed at:

[http://research.dwp.gov.uk/asd/index.php?page=early\\_ests](http://research.dwp.gov.uk/asd/index.php?page=early_ests)

### **Flexible New Deal [OFFICIAL STATISTICS]**

- A Flexible New Deal (FND) performance report, containing official statistics broken down to contract level, and an information document containing methodology and technical definitions can be found at:  
<http://statistics.dwp.gov.uk/asd/index.php?page=ddfnd>

## Contents

### 1. Housing Benefit / Council Tax Benefit

	<i>page</i>
1.1 Housing Benefit / Council Tax Benefit recipients	3

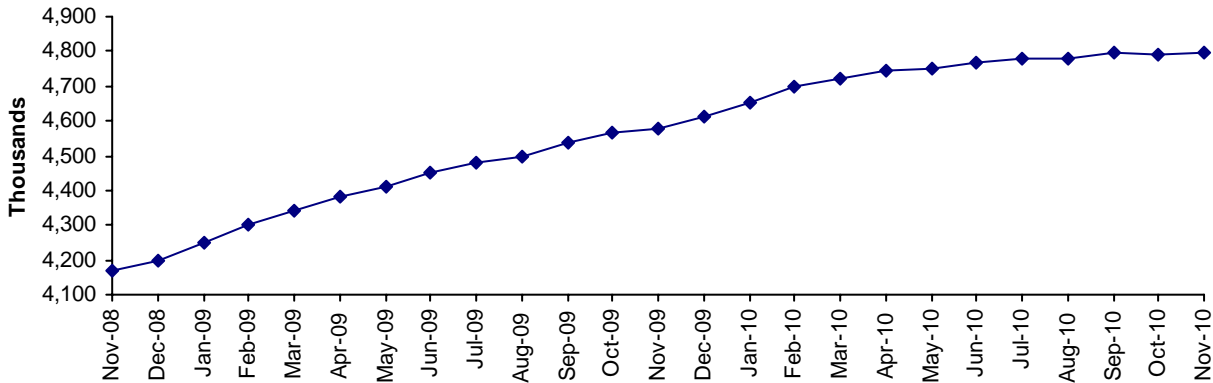
### 2. Early Estimates for Working-Age Inactive Benefit Client Groups

2.1 Employment and Support Allowance / incapacity benefits client group	6
2.2 Income Support lone parent client group	7
Notes	8

**1. National Statistics: Housing Benefit / Council Tax Benefit**

Housing Benefit (HB) was introduced on 1st April 1983 and is an income-related benefit designed to help people on low incomes pay for rented accommodation whether in or out of work.

**Housing Benefit Recipients: November 2008 to November 2010**



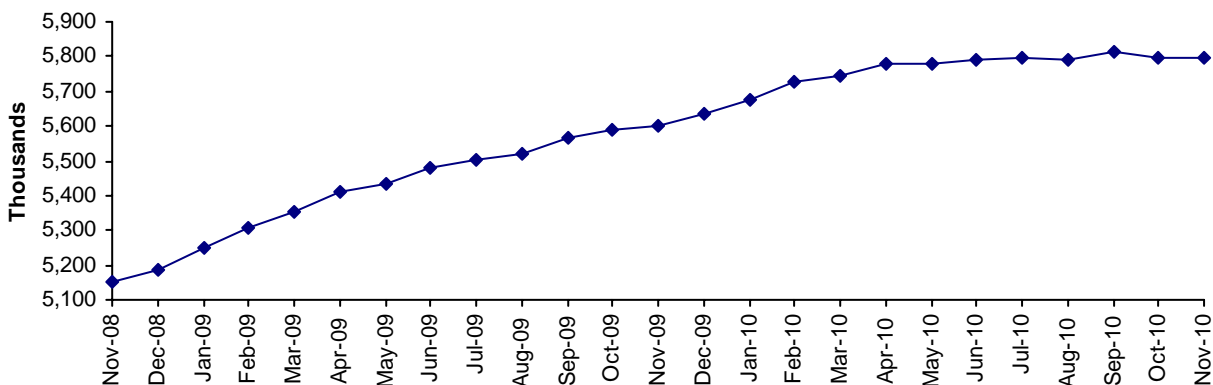
At November 2010 there were 4.80 million recipients of Housing Benefit, of whom almost three-quarters were aged under 65. The average weekly amount of Housing Benefit was £84.54.

69% of Housing Benefit recipients were tenants of Social Sector with 77% of Private Sector tenants receiving the Local Housing Allowance.

67% were also in receipt of Income Support, income-based Jobseeker's Allowance, income-based Employment and Support Allowance or Pension Credit (Guarantee Credit).

Council Tax Benefit (CTB) was introduced on 1st April 1993 and is an income-related benefit, calculated in a similar way to Housing Benefit, which has been designed to help people on low incomes pay their Council Tax.

**Council Tax Benefit Recipients: November 2008 to November 2010**



At November 2010 there were 5.80 million recipients of Council Tax Benefit (figure excludes second adult rebates), of whom 3.6 million were aged under 65. The average weekly amount of Council Tax Benefit was £15.88.

68% of Council Tax Benefit recipients were also in receipt of Income Support, income-based Jobseeker's Allowance, income-based Employment and Support Allowance or Pension Credit (Guarantee Credit).

**Table 1.1 Housing Benefit (HB) / Council Tax Benefit (CTB) recipients<sup>1,2</sup>: November 2008 – November 2010**

*Thousands*

	All Housing Benefit (HB) recipients			All Council Tax Benefit (CTB) recipients		
	Total	Tenure Type		Total	Age Group <sup>3</sup>	
		Social Rented Sector	Private Rented Sector		Aged under 65	Aged 65 or over
Nov-08	<b>4,171.94</b>	3,109.37	1,054.81	<b>5,149.39</b>	2,947.33	2,201.97
Dec-08	<b>4,200.16</b>	3,114.59	1,081.25	<b>5,188.10</b>	2,986.34	2,201.34
Jan-09	<b>4,252.25</b>	3,138.38	1,108.59	<b>5,250.81</b>	3,041.80	2,208.70
Feb-09	<b>4,301.79</b>	3,155.98	1,140.04	<b>5,305.98</b>	3,099.97	2,205.48
Mar-09	<b>4,343.92</b>	3,167.39	1,172.42	<b>5,352.41</b>	3,143.86	2,208.03
Apr-09	<b>4,382.08</b>	3,174.78	1,202.52	<b>5,408.83</b>	3,196.63	2,211.72
May-09	<b>4,412.99</b>	3,186.40	1,221.42	<b>5,436.19</b>	3,223.62	2,211.97
Jun-09	<b>4,450.41</b>	3,198.87	1,246.28	<b>5,479.12</b>	3,262.31	2,216.17
Jul-09	<b>4,477.25</b>	3,204.61	1,263.56	<b>5,503.79</b>	3,284.83	2,218.39
Aug-09	<b>4,494.56</b>	3,193.05	1,272.64	<b>5,519.39</b>	3,301.37	2,217.09
Sep-09	<b>4,538.56</b>	3,195.38	1,291.16	<b>5,563.92</b>	3,344.59	2,219.13
Oct-09	<b>4,568.73</b>	3,203.50	1,310.36	<b>5,588.29</b>	3,366.77	2,221.29
Nov-09	<b>4,579.18</b>	3,234.06	1,341.08	<b>5,600.83</b>	3,381.33	2,219.27
Dec-09	<b>4,610.73</b>	3,243.61	1,363.97	<b>5,635.24</b>	3,413.07	2,221.95
Jan-10	<b>4,651.10</b>	3,261.67	1,386.51	<b>5,676.83</b>	3,453.12	2,223.49
Feb-10	<b>4,700.16</b>	3,283.76	1,413.84	<b>5,727.14</b>	3,502.35	2,224.58
Mar-10	<b>4,718.94</b>	3,288.17	1,428.08	<b>5,743.60</b>	3,517.47	2,225.93
Apr-10	<b>4,746.32</b>	3,294.90	1,448.70	<b>5,780.20</b>	3,549.78	2,230.23
May-10	<b>4,751.53</b>	3,293.63	1,455.26	<b>5,780.09</b>	3,553.83	2,226.07
Jun-10	<b>4,765.73</b>	3,299.64	1,463.49	<b>5,788.76</b>	3,562.14	2,226.43
Jul-10	<b>4,777.43</b>	3,303.69	1,471.13	<b>5,798.60</b>	3,571.76	2,226.65
Aug-10	<b>4,776.66</b>	3,300.37	1,473.58	<b>5,791.80</b>	3,567.83	2,223.78
Sep-10	<b>4,797.46</b>	3,308.46	1,486.42	<b>5,811.26</b>	3,585.36	2,225.72
Oct-10	<b>4,789.49</b>	3,299.63	1,487.33	<b>5,794.77</b>	3,572.29	2,222.30
Nov-10	<b>4,798.32</b>	3,300.61	1,495.18	<b>5,795.10</b>	3,573.80	2,221.09

*Source: Single Housing Benefit Extract (SHBE)*

**Notes:**

1. *Housing Benefit and Council Tax Benefit recipients are individual claimants who had a live in payment claim on the second Thursday in each month. Council Tax Benefit recipients exclude Second Adult Rebate cases.*
2. *Caseload figures are rounded to the nearest 10. Components may not sum to total due to independent rounding.*
3. *Age groups are based on the age at count date (second Thursday in each month), of either:*
  - (a) *the recipient if they are single, or*
  - (b) *the elder of the recipient or partner if claiming as a couple.*

Latest statistical data available from: <http://research.dwp.gov.uk/asd/index.php?page=hbctb>

## 2. Official Statistics: Early Estimates for Working-Age Inactive Benefit Client Groups

### 2.1 Employment and Support Allowance / incapacity benefits (ESA/IB) client group

Table 2.1: Working-age ESA/IB client group May 2009 to December 2010

Time Series	National Statistic	Early Estimate
	Number of Claimants	Number of Claimants
May-09	2,621.43	
Aug-09	2,632.74	
Nov-09	2,618.38	
Feb-10	2,614.76	
May-10	2,613.10	
Jun-10		2,615
Jul-10		2,605
Aug-10		2,605
Sep-10		2,595
Oct-10		2,590
Nov-10		2,585
Dec-10		2,580

The working-age **ESA/IB** early estimate for December 2010 is **2.580 million** to the nearest 5,000. This represents a fall of 1.2 per cent since May 2010 (the latest National Statistic).

Final figures for the quarter ending August 2010 will be released on 16<sup>th</sup> March 2011. **The most recent National Statistics show 2.61 million individuals were in the ESA/IB client group at May 2010.**

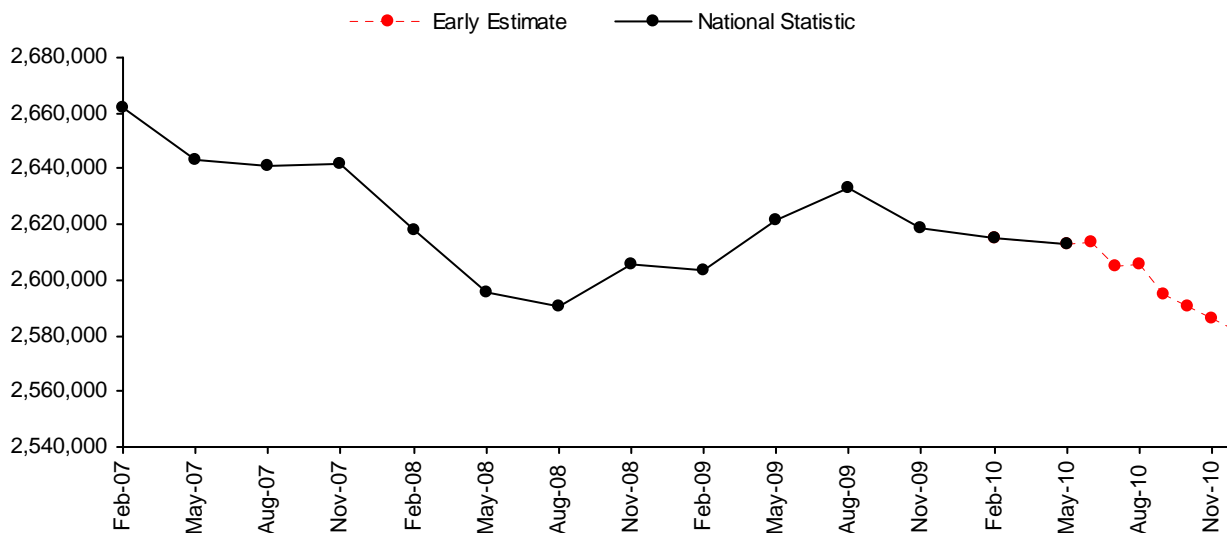
See:

<http://research.dwp.gov.uk/asd/index.php?page=tabtool>

These figures are estimates of the final National Statistic, to give an indication of their accuracy, over the past year the early estimates have been revised by an average of 0.1 per cent. See notes section for more information.

The age at which women reach State Pension age will gradually increase from 60 to 65 between April 2010 and April 2020. Please see the Welfare Reform section of the notes for further information.

**Figure 2.1: National Statistics to May 2010 and early estimates of numbers in working age ESA/IB client group: June 2010 to December 2010**



**Notes relating to figure 2.1 and table 2.1:**

1. ESA/IB: From November 2008 ESA replaced Incapacity Benefit (IB) and Income Support paid on the grounds of incapacity for new claims from 27 October 2008. Prior to this the "incapacity benefits group" referred to claimants of IB or Severe Disablement Allowance including people claiming Income Support on the grounds of incapacity.
2. The red dotted line in the chart above emphasises that the figures are estimates and official statistics.
3. Source data: *DWP Information Directorate: Work and Pensions Longitudinal Study*
4. When the next quarterly National Statistics are published they will be included as a National Statistic in Table 2.1, and the monthly early estimates for this quarter will be removed from Table 2.1.

## 2.2 Income Support lone parent (ISLP) client group

Table 2.2 ISLP client group May 2009 to December 2010

Time Series	thousands	
	National Statistics	Early Estimate
May-09	720.48	
Aug-09	715.73	
Nov-09	695.72	
Feb-10	692.02	
May-10	679.15	
Jun-10		675
Jul-10		675
Aug-10		670
Sep-10		665
Oct-10		660
Nov-10		645
Dec-10		640

Notes for further information.

The working-age ISLP early estimate for December 2010 is **640 thousand** to the nearest 5,000. This represents a fall of 5.5 per cent since May 2010 (the latest National Statistic).

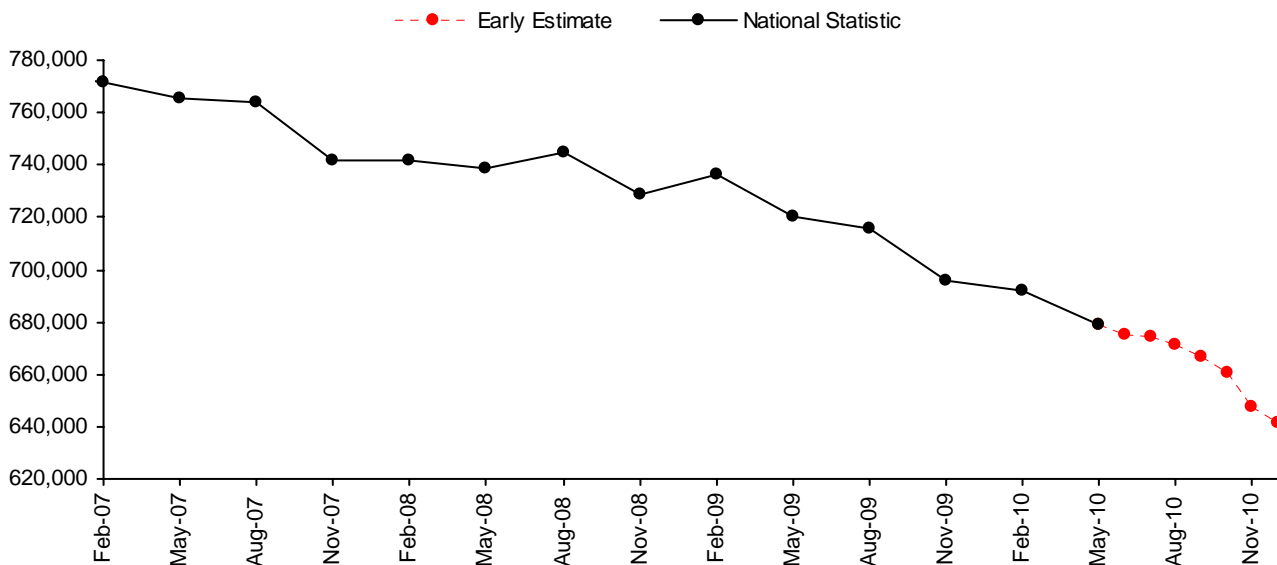
National Statistics are available for quarters up to the end of May 2010. Final figures for the quarter ending August 2010 will be released on 16<sup>th</sup> March 2011. **The most recent National Statistics show 679 thousand individuals were in the ISLP client group at May 2010.** See: <http://research.dwp.gov.uk/asd/index.php?page=tabtool>

The number of lone parents claiming Income Support has been affected by the Lone Parent Obligations policy changes which came into effect from 24 November 2008. For more information see the notes section.

The figures are estimates of the final National Statistic, to give an indication of their accuracy, over the past year the early estimates have been revised by an average of 0.4 per cent. See the notes section for more information.

The age at which women reach State Pension age will gradually increase from 60 to 65 between April 2010 and April 2020. Please see the Welfare Reform section of the

Figure 2.2: National Statistics to May 2010 and early estimates of numbers in working age ISLP client group: June 2010 to December 2010



### Notes relating to figure 2.2 and table 2.2:

- ISLP: claimants on IS with child under 16 and no partner. New and repeat customers with the following conditions will no longer be entitled to Income Support:
  - A youngest child aged 12 or over from November 2008;
  - A youngest child aged 10 or over from October 2009;
  - A youngest child aged 7 or over from October 2010.
- The red dotted line in the chart above emphasises that the figures are estimates and official statistics.
- Source data: *DWP Information Directorate: Work and Pensions Longitudinal Study*
- When the next quarterly National Statistics are published they will be included as a quarterly National Statistic in Table 2.2, and the monthly early estimates for this quarter will be removed from Table 2.2.

Latest statistical data available from: [http://research.dwp.gov.uk/asd/index.php?page=early\\_ests](http://research.dwp.gov.uk/asd/index.php?page=early_ests)

## NOTES

### 1. The Statistical Summary

The Department for Work and Pensions (DWP) publish a Statistical Summary document each month. It is used for the release of a wide range of DWP statistics

The DWP Statistical Summary brings together key National Statistics on DWP administered benefits, some employment programmes and JSA (Jobseeker's Allowance) sanctions and vacancies. To provide a more complete picture of DWP responsibility, statistics on Housing Benefit and Council Tax Benefit (administered by Local Authorities) and the Child Support Agency are also included.

The Summary is published monthly, containing Housing Benefit and Council Tax Benefit National Statistics together with official statistics giving early estimates of inactive benefit caseloads, plus a link to the latest report on Flexible New Deal. Each quarter (in May, August, November and February), a larger document also contains the detail of DWP administered benefits, some employment programmes, JSA sanctions, vacancies and the Child Support Agency.

Alongside the Statistical Summary, there are a large number of tables which enable the user to delve in to the detail. These are provided to the user as:

- The DWP Tabulation Tool – for DWP administered benefits and employment programmes the Tabulation Tool provides the user with an interactive tool to select one of thousands of possible tabulations. This is available at: <http://research.dwp.gov.uk/asd/index.php?page=tabtool>. A similar Tabulation Tool, derived from 5% sample data, is also available. Whenever possible, 100% data should be used in preference to 5% estimates, as these are both more accurate and form DWP's headline statistics. Some statistics remain outside the scope of the Tabulation Tool but will continue to be available via the internet as pre-defined summary tables.
- Identical numbers via Nomis (<https://www.nomisweb.co.uk/Default.asp>)
- Separate detailed tables on Housing Benefit and Council Tax Benefit; Employment and Support Allowance; Claimants on out of work benefits
- Tables broken down by Lower Super Output Area (LSOA)
- A Flexible New Deal (FND) performance report, containing figures broken down to contract level
- Other tables and background information via links on the Tabulation Tool pages (e.g. links to long time series spreadsheets; descriptions of the benefit.)

The National Statistics paper "DWP statistics transformed: the modernisation of the DWP's data sources and statistical publications" announced major changes to the National Statistics the Department publishes in 2005. Much of this content is still relevant and is available from:

[http://statistics.dwp.gov.uk/asd/asd1/stats\\_consultation/modstats.pdf](http://statistics.dwp.gov.uk/asd/asd1/stats_consultation/modstats.pdf)

### 2. Statistical groups

DWP has a typology to define Statistical Groups within the client group classifications. The aim of the Statistical Group typology is to present each person by the main reasons they are in contact with the Department. Like the client group classification, each client is classified just once, permitting the estimation of the total number of people claiming one or more benefits. The Statistical Group hierarchy is:

a] Jobseeker	e] Other income-related benefits
b] Employment and Support Allowance and incapacity benefits	f] Disabled
c] Lone parents	g] Bereaved
d] Carers	h] Housing Benefit
	i] State Pension only recipients

From November 2008 the "incapacity benefits statistical group" includes Employment and Support Allowance (ESA). ESA replaced Incapacity Benefit and Income Support paid on the grounds of incapacity for new claims from 27th October 2008. Prior to this the "incapacity benefits group" covered people on Incapacity Benefit or Severe Disablement Allowance, including people claiming Income Support on the grounds of incapacity.



### 3. Jobseeker's Allowance figures at ONS

The preferred source of numbers for Jobseeker's Allowance is the ONS claimant count figure; these are more up to date and contain clerical cases. However, the reason we use the DWP JSA figures is that they are consistent with the other benefits used to produce DWP National Statistics, and permit a wider set of breakdowns. The ONS figures are available from <http://www.statistics.gov.uk/>.

### 4. Flows on and off benefit

Also available are quarterly experimental figures on flows on and off all the main benefits. The historic flows information is available on the tabulation tool up to February 2008 (see section 8 for news of re-instatement). Pension Credit information is available via a one-click table: [http://83.244.183.180/100pc/pc/tabtool\\_pc.html](http://83.244.183.180/100pc/pc/tabtool_pc.html)

### 5. Early Estimates

The official statistics giving Early Estimates are designed to give indicative, timely information ahead of the publication of full National Statistics. They are not a substitute for the National Statistics and will be replaced when the final quarterly National Statistics covering the same period are published.

To give an indication of their accuracy, over the past year the early estimates for ESA/IB have been revised by an average of 0.1%, with the biggest revision being 0.35% and the smallest being 0.01%. The early estimates for ISLP have been revised by an average of 0.4%, with the biggest revision being 1.06% and the smallest being 0.01%.

More detailed information can be accessed via the following links:

[http://statistics.dwp.gov.uk/asd/asd1/early\\_ests/technical\\_document\\_final.pdf](http://statistics.dwp.gov.uk/asd/asd1/early_ests/technical_document_final.pdf)

[http://statistics.dwp.gov.uk/asd/asd1/early\\_ests/QandA\\_Early\\_Estimates\\_final.pdf](http://statistics.dwp.gov.uk/asd/asd1/early_ests/QandA_Early_Estimates_final.pdf)

### 6. Welfare Reform

The Lone Parent Obligation policy came into effect from 24 November 2008; Lone Parents (LPs) with a youngest child aged 12 or over were no longer able to make a new or repeat claim for Income Support (IS) solely on the basis of their parental status. Existing IS LPs with a youngest child aged 12 or over are having their eligibility removed over a period of time commencing 2 March 2009. From October 2009 this policy was extended to LPs with a youngest child aged 10 or 11; from October 2010 the policy was extended to LPs with a youngest child aged 7 or over.

Most effected LPs will leave IS and claim Jobseeker's Allowance (JSA). However, there are exceptions to these rules where the youngest child can legitimately be over the ages mentioned above. Similarly, some former LPs remain on IS for other reasons (e.g. they have a long term caring responsibility and claim Carer's Allowance). Through analysis of the effected claimants over the next quarters, it can be decided if there is a requirement to change the structure of IS LP statistics. In the meantime, the IS LP series will continue to be defined as 'single IS claimants with a child under 16'.

The Flexible New Deal contracted employment provision began in October 2009 in Phase One Areas (around half of Great Britain). FND provides personalised employment support for up to 12 months (with the option of a six month extension) to jobseekers who have been unemployed for 12 months and to those eligible for early entry. FND will be phased out and replaced by the Work Programme from summer 2011. Headline figures on starts and jobs are released as part of the Quarterly Statistical Summary release. More detailed FND breakdowns (contract level) are available in a new Performance Report which can be accessed via this link: <http://statistics.dwp.gov.uk/asd/index.php?page=ddfnd>

The age at which women reach State Pension age will gradually increase from 60 to 65 between April 2010 and April 2020. The government has announced new proposals for increasing State Pension age which would mean women's State Pension age would increase more quickly to 65 between April 2016 and November 2018. Then, from December 2018, the State Pension age for both men and women would start to increase to reach 66 by April 2020. These changes will introduce a small increase to the number of working age benefit recipients and a small reduction to the number of pension age recipients. There will also be changes to the way we report benefit recipients as a proportion of the working population. More information can be found at: <http://statistics.dwp.gov.uk/asd/espa.pdf>. For general information about the change to State Pension age, please see:

[http://www.direct.gov.uk/en/Pensionsandretirementplanning/StatePension/DG\\_4017919](http://www.direct.gov.uk/en/Pensionsandretirementplanning/StatePension/DG_4017919)

## 7. Known Issues, Changes and Revisions to the Statistical Summary

On 16 February 2011:

- Due to unforeseen technical problems the DWP Quarterly Statistical Summary, due for release on 16 February 2011, has been delayed until 16th March 2011. For subsequent releases, we will resume the usual pattern.
- Release of Winter Fuel Payments for households for winter 2009/10 by 2010 Parliamentary Constituencies these can be found at: <http://research.dwp.gov.uk/asd/index.php?page=wfp> .
- Minor changes to the presentation of Housing Benefit and Council Tax Benefit trends in this document.

## 8. Notification of future changes to the Summary

On 16 March 2011:

- Reinstatement of the benefit flows Tabulation Tools ([http://research.dwp.gov.uk/asd/index.php?page=tabtool#benefit\\_flows](http://research.dwp.gov.uk/asd/index.php?page=tabtool#benefit_flows)) including a back series of unpublished quarters including ESA flows for the first time as part of Tabulation Tool functionality.
- Reinstatement of the employment programmes "Jobs" tools and "Immediate Destination on Leaving" breakdown.
- No further updating of the New Deal 25 Plus or the New Deal for Young People Tabulation Tools: In Spring 2010, a decision was taken to extend contracts with external providers who deliver NDYP and ND25+ provision which had been due to end. This reflects the decision to cancel the planned introduction of Phase 2 of Flexible New Deal. Since the contracts were extended, contingency software fixes have been adopted to enable customers to be referred to NDYP and ND25+ provision as per the policy intent. These fixes have had a knock-on impact on the recorded figures as processes currently being followed by some customers do not strictly match the NDYP and ND25+ models. In practice, this means that most starts to ND25+ and NDYP in Phase 2 areas since 16 August 2010 are excluded from these tables. In this release, reported starts to NDYP are around 7% lower in the latest month than expected; similarly, reported starts to ND25+ are around 1% lower in the last month than expected. Hence, these statistics should be used with caution. Unfortunately, it is not possible to correct this issue during the remaining lifetime of ND25+ and NDYP. So, future releases of these statistics would be severely affected by this problem. Hence, DWP propose that there will be no further release of statistics for ND25+ and NDYP.
- Methodological changes to the processing of JSA sanctions statistics will change the balance between fixed length sanctions categorised as 'New Deal' and 'non-New Deal'. Whilst the total numbers of fixed length sanctions will not be affected, the New Deal element will be higher than would otherwise have been the case.
- Table 1.2 in the main Statistical Summary has previously included a separate breakdown for recipients of Incapacity Benefit, Severe Disablement Allowance or Employment and Support Allowance (ESA). For those claiming ESA, the income based element is paid via ESA rather than as a separate Income Support claim. This makes the time series breakdown misleading for users. Hence, this beneficiary section of the table will be removed.

## 9. Social Security and Child Support Appeals Tribunal (SSCSA)

The Independent Tribunal Service was introduced in 1984 to provide an independent appeals system. It was replaced by the Appeals Service (tAS) in April 2000. From 1st April 2006 the Appeals Service, was renamed as the Social Security and Child Support Appeals Tribunal (SSCSA) and became part of The Tribunals Service (an Executive agency within the Department for Justice).

Responsibility for publishing statistics on the appeals now resides with The Tribunals Service and they publish statistical information via their website <http://www.tribunals.gov.uk/>.

## 10. Fraud and Error statistics

National Statistics are published presenting six-monthly estimates of fraud and error in claims for Income Support, Jobseeker's Allowance, Pension Credit and Housing Benefit, along with an annual estimate of the level of fraud and error in the benefit system as a whole. One-off benefit reviews have been carried out from time to time to estimate fraud and error in claims for other benefits. Reports can be found at [http://research.dwp.gov.uk/asd/asd2/index.php?page=fraud\\_error](http://research.dwp.gov.uk/asd/asd2/index.php?page=fraud_error)

## 11. Take-Up of Income-Related Benefits

Publications contain information on the take-up of the main income-related benefits in Great Britain: Income Support, Pension Credit, Housing Benefit, Council Tax Benefit, Employment and Support Allowance (income related) and Jobseeker's Allowance (income based). Take-up is measured in two ways. Expenditure take-up compares the total amount of benefit received in the course of a year with the total amount that would have been received if everyone took up their entitlement for the full period of entitlement. Caseload take-up compares the number of benefit claimants – averaged over the year – with the number who would be receiving if everyone took up their entitlement for the full period of entitlement. Data is sourced from the Family Resources Survey and administrative benefit records. Latest published figures are available at <http://statistics.dwp.gov.uk/asd/index.php?page=irb>

## 12. Other National Statistics issued by the Department for Work and Pensions

Abstract of Statistics for Benefits and Contributions and Indices of Prices and Earnings (annual) – *provides a reference source for those people interested in the main aspects of benefits, contributions and indices of prices and earnings. Latest published figures:* <http://statistics.dwp.gov.uk/asd/index.php?page=abstract>

Child Support Agency Quarterly Summary of Statistics – *provides statistics on the Child Support Agency. Latest published figures:* <http://statistics.dwp.gov.uk/asd/index.php?page=csa>

Family Resources Survey (annual) - *provides information on the incomes and circumstances of private households in the United Kingdom:* <http://statistics.dwp.gov.uk/asd/frs/index.php?page=intro>

Households Below Average Income (annual) - *provides information on potential living standards as determined by disposable income, changes in income patterns over time and income mobility:* <http://statistics.dwp.gov.uk/asd/index.php?page=hbai>

Industrial Injuries Disablement Benefit Quarterly Summary of Statistics – *provides statistics on people in receipt of Industrial Injuries Disablement Benefit, new claims and newly diagnosed prescribed diseases. Latest published figures:* <http://statistics.dwp.gov.uk/asd/index.php?page=iidb>

National Insurance numbers allocated to overseas nationals (Previously migrant workers statistics – quarterly) *provides statistics on migrant workers. Latest published figures:* [http://statistics.dwp.gov.uk/asd/asd1/niall/index.php?page=nino\\_allocation](http://statistics.dwp.gov.uk/asd/asd1/niall/index.php?page=nino_allocation)

Neighbourhood Statistics – *Quarterly ward and Lower Super Outputs Area caseloads for Income Support, Jobseeker's Allowance, Incapacity Benefits, Disability Living Allowance, Attendance Allowance, Pension Credit and State Pension are available from:* <http://83.244.183.180/NESS/page1.htm>

Pensioner Income Series (annual) - *examines the levels, sources and distribution of pensioners' incomes and the position of pensioners within the population income distribution. Latest published figures:* [http://statistics.dwp.gov.uk/asd/index.php?page=pensioners\\_income](http://statistics.dwp.gov.uk/asd/index.php?page=pensioners_income)

National Insurance Contributions & Qualifying Years and Second Tier Pension Provision (annual) – *contains analysis of National Insurance contributions and contracted out pension schemes. Latest published figures:* [http://statistics.dwp.gov.uk/asd/index.php?page=stpp\\_cq](http://statistics.dwp.gov.uk/asd/index.php?page=stpp_cq)

Tax/Benefit Model Tables (annual) – *designed to illustrate the weekly financial circumstances of a selection of hypothetical local authority and private tenants. Latest published figures:* <http://statistics.dwp.gov.uk/asd/index.php?page=tbmt>

## 13. Other statistical outputs issued by the Department for Work and Pensions

Benefit Expenditure Tables - *financial year historic information on benefit expenditure and caseloads, along with forecasts are available from:* <http://statistics.dwp.gov.uk/asd/asd4/index.php?page=expenditure>

Employment and Support Allowance - *work capability assessment statistics. Latest published figures:* [http://statistics.dwp.gov.uk/asd/workingage/index.php?page=esa\\_wca](http://statistics.dwp.gov.uk/asd/workingage/index.php?page=esa_wca)

Pathways to Work Officials Statistics - *a comprehensive range of support and provision designed to improve customers' prospects of returning to work. Latest published figures:* [http://statistics.dwp.gov.uk/asd/workingage/index.php?page=ib\\_ref\\_p2w](http://statistics.dwp.gov.uk/asd/workingage/index.php?page=ib_ref_p2w)

Six Month Offer Statistics - *a support package offering up to 500,000 opportunities for Jobseeker's Allowance customers reaching six months unemployment. Latest published figures:* [http://statistics.dwp.gov.uk/asd/index.php?page=6month\\_offer](http://statistics.dwp.gov.uk/asd/index.php?page=6month_offer)