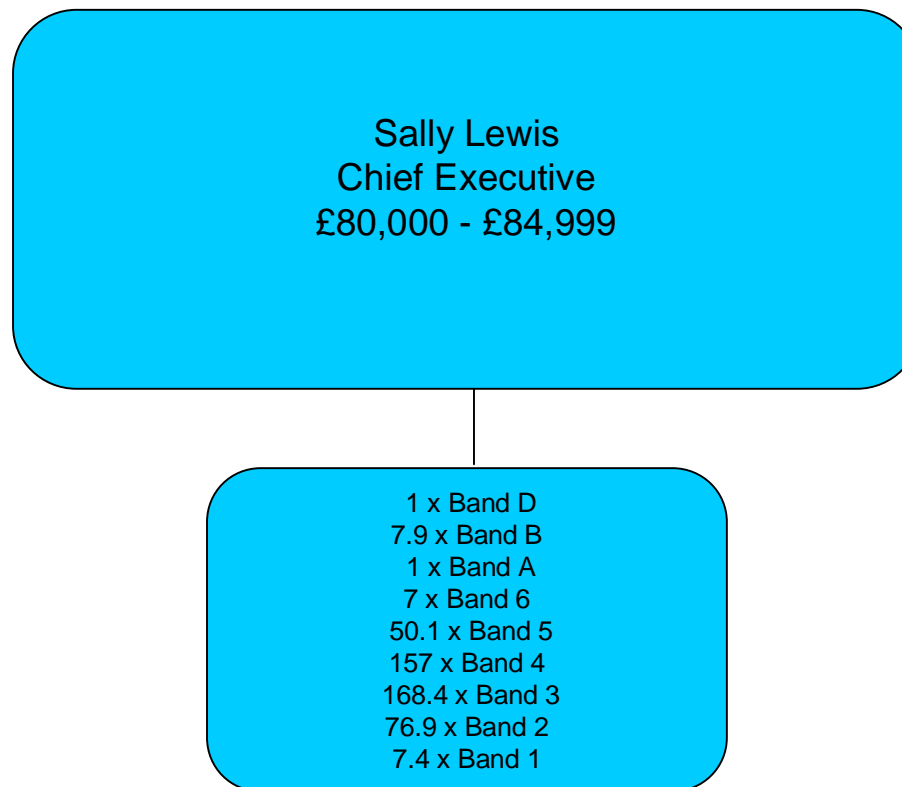


Avon & Somerset Probation Trust

Total staff in Trust = 477.7 FTE

Total staff salaries = £13,541,622

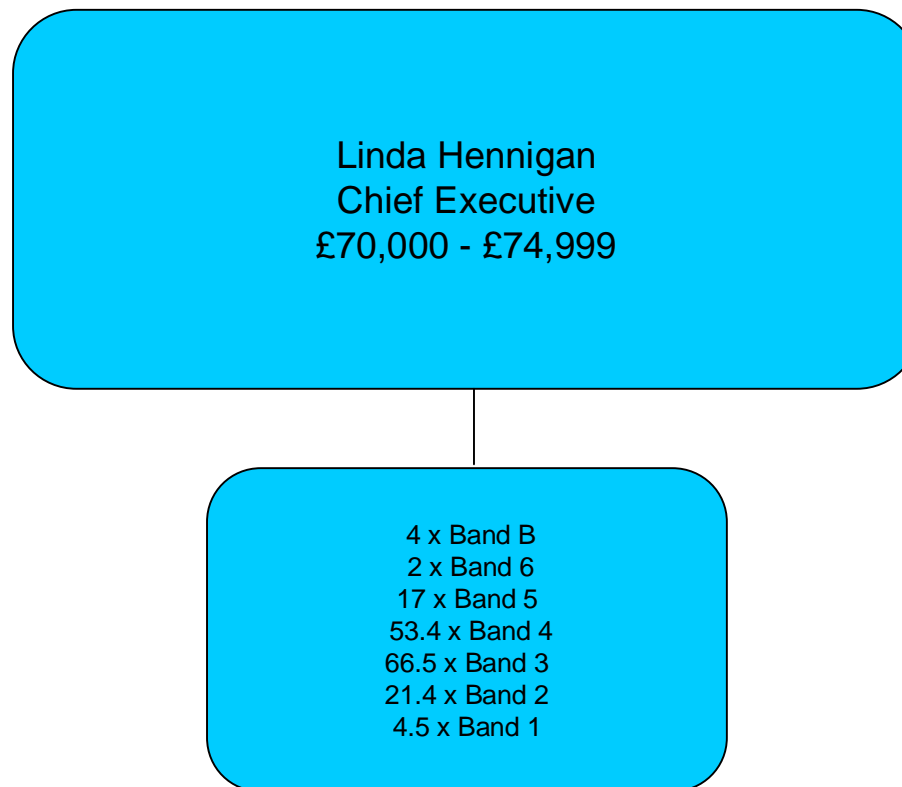


This represents the organisation as at 30 June 2010

Bedfordshire Probation Trust

Total staff in Trust= 169.8 FTE

Total staff salaries = £4,927,836



This represents the organisation as at 30 June 2010

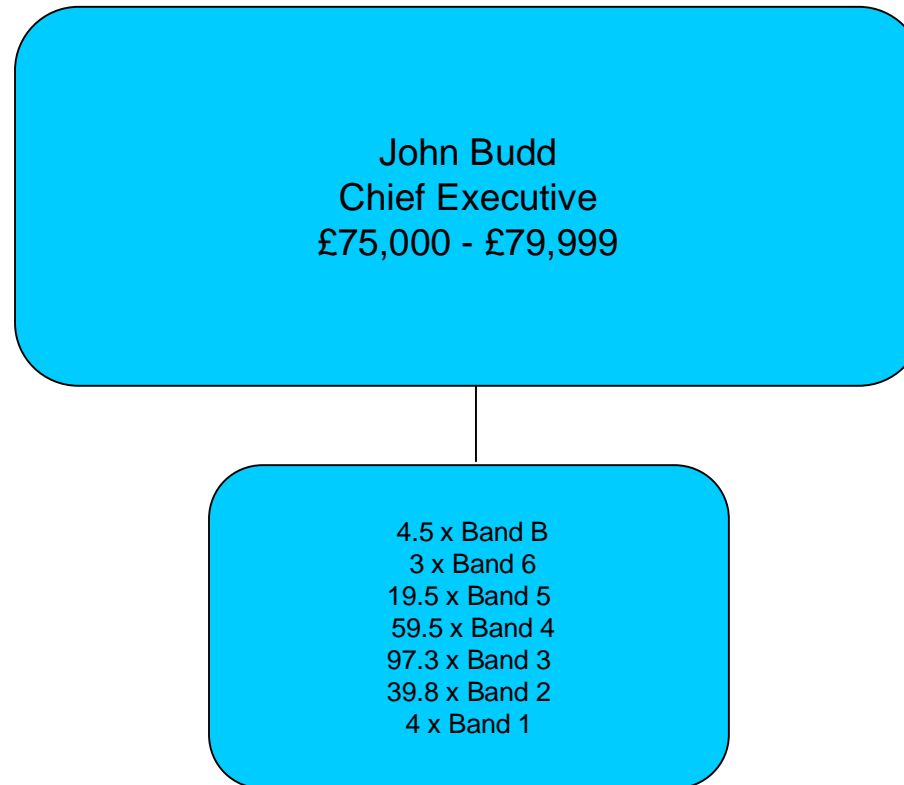


Ministry of
JUSTICE

Cambridgeshire & Peterborough Probation Trust

Total staff in Trust = 228.6 FTE

Total staff salaries = £6,055,462

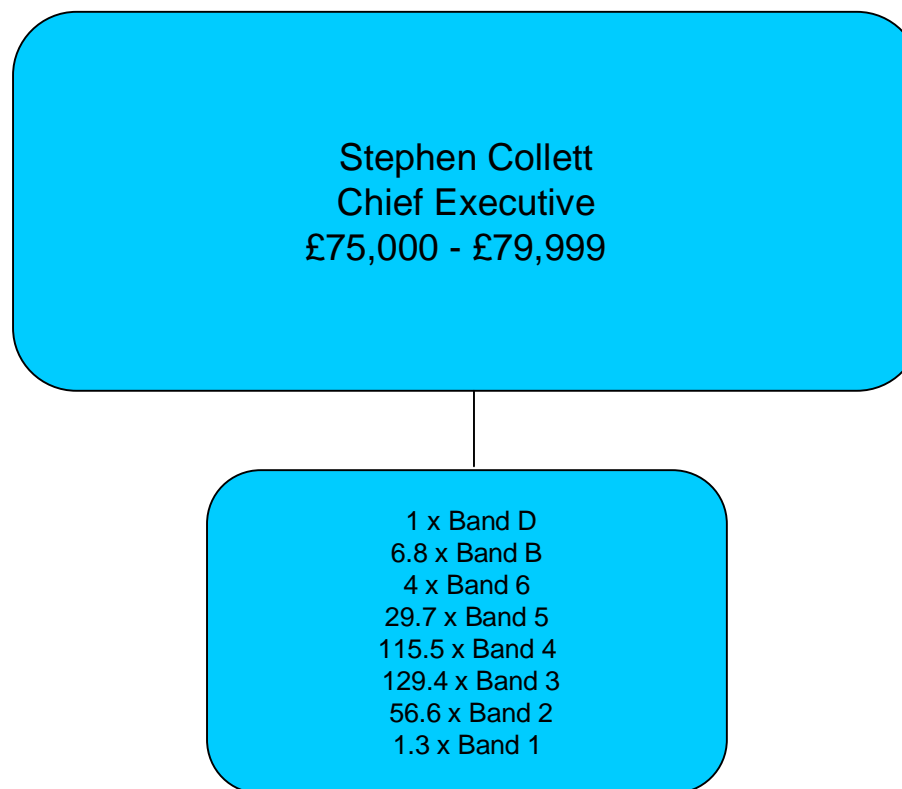


This represents the organisation as at 30 June 2010

Cheshire Probation Trust

Total staff in Trust = 345.3 FTE

Total staff salaries = £9,207,505

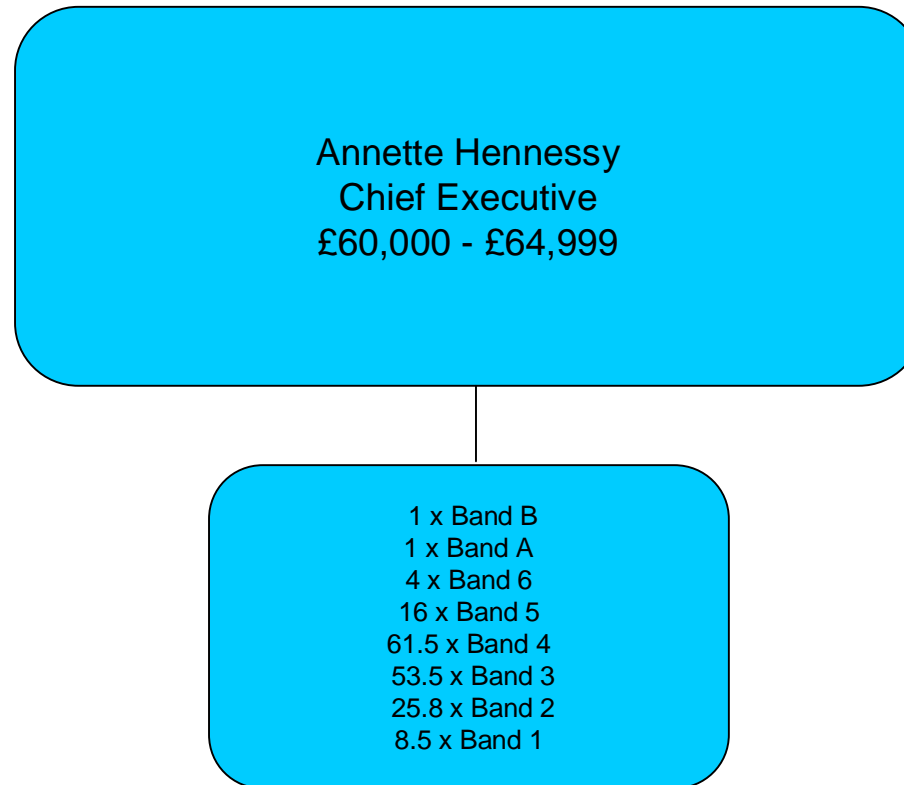


This represents the organisation as at 30 June 2010

Cumbria Probation Trust

Total staff in Trust= 172.3 FTE

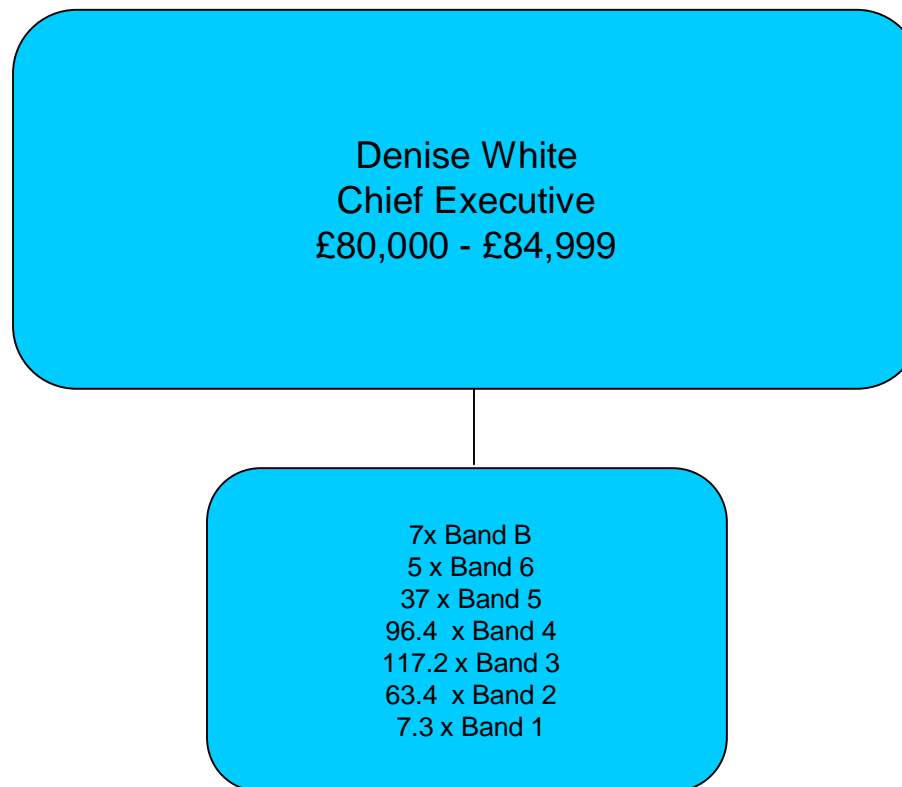
Total staff salaries = £4,701,181



This represents the organisation as at 30 June 2010

Derbyshire Probation Trust

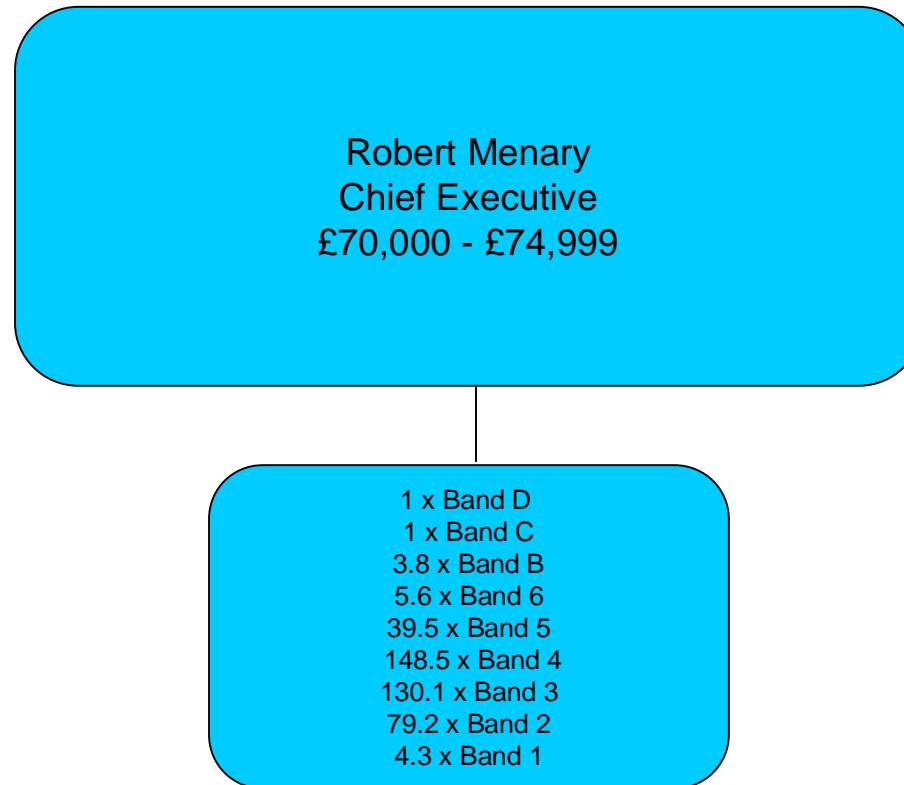
Total staff in Trust = 334.3
Total staff salaries = £10,058,579



This represents the organisation as at 30 June 2010

Devon & Cornwall Probation Trust

*Total staff in Trust = 414 FTE
Total staff salaries = £11,549,619*

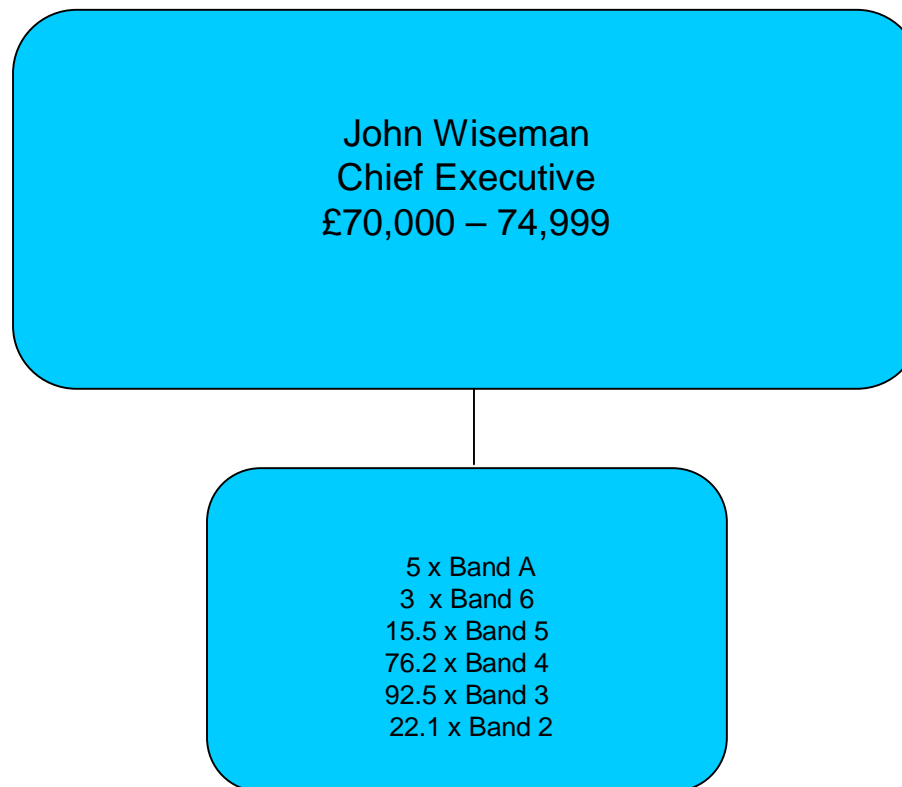


This represents the organisation as at 30 June 2010

Dorset Probation Trust

Total staff in Trust = 215.3 FTE

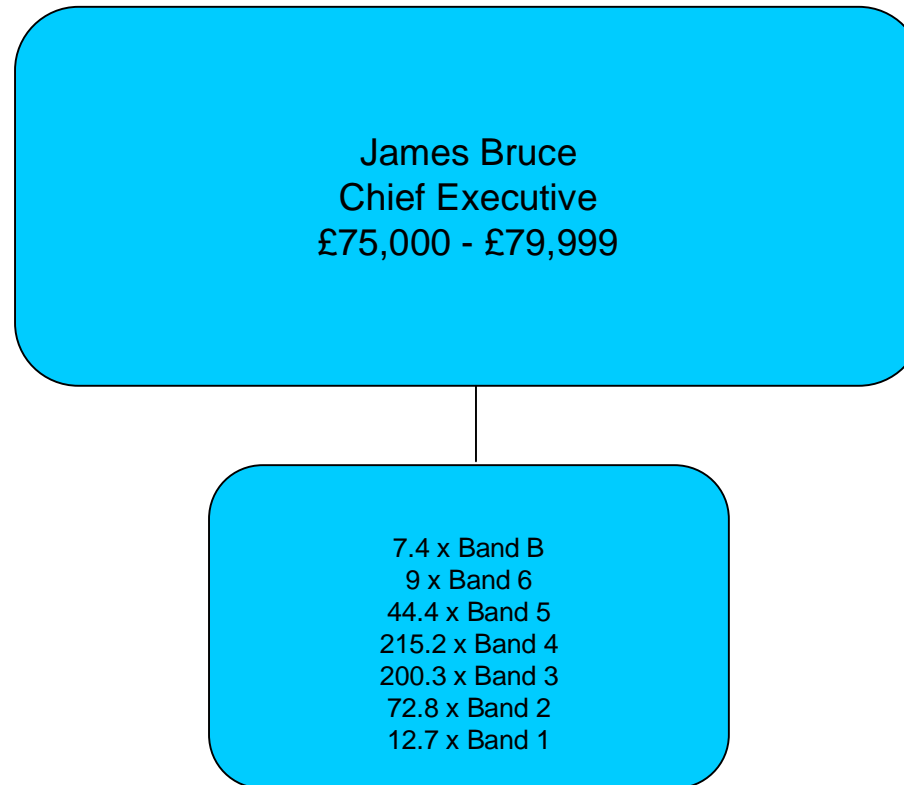
Total staff salaries = £5,853,732



This represents the organisation as at 30 June 2010

Durham Tees Valley Probation Trust

*Total staff in Trust= 562.8 FTE
Total staff salaries = £16,116,278*

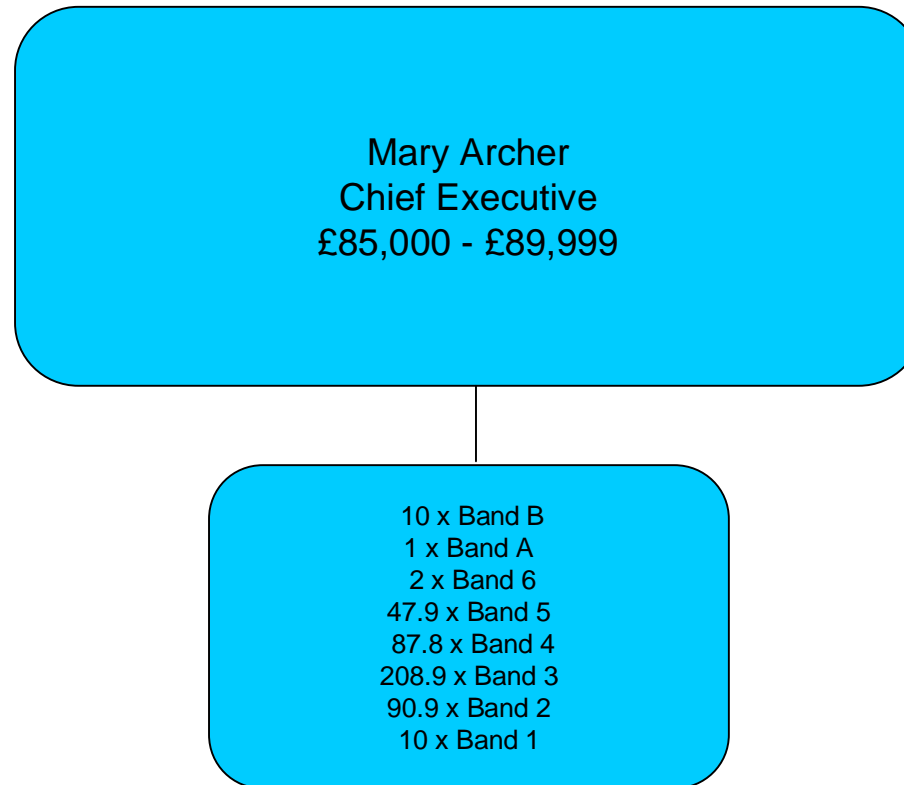


This represents the organisation as at 30 June 2010

Essex Probation Trust

Total staff in Trust= 459.5 FTE

Total staff salaries = £11,877,431

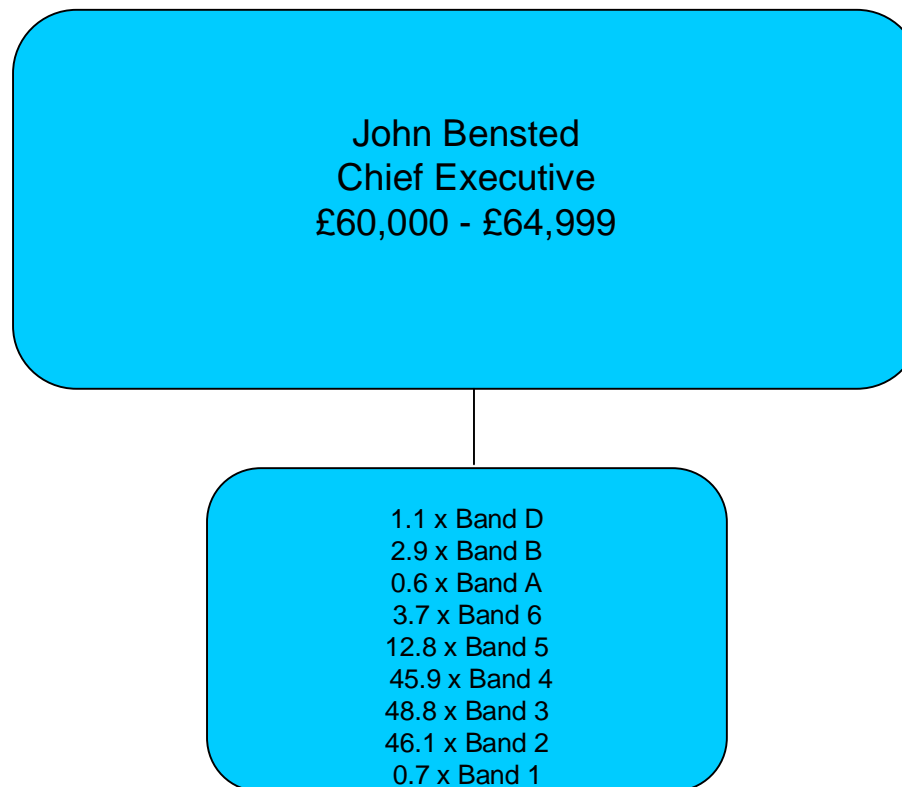


This represents the organisation as at 30 June 2010

Gloucestershire Probation Trust

Total staff in Trust = 163.6 FTE

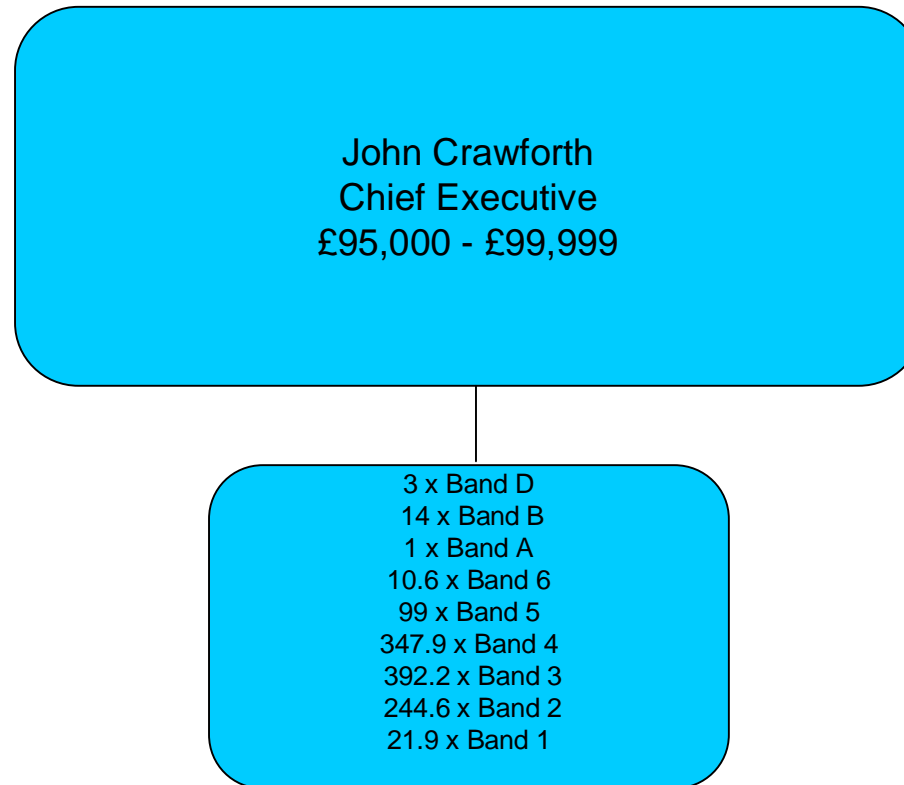
Total staff salaries = £4,470,769



This represents the organisation as at 30 June 2010

Greater Manchester Probation Trust

*Total staff in Trust = 1135.2 FTE
Total staff salaries = £32,702,700*

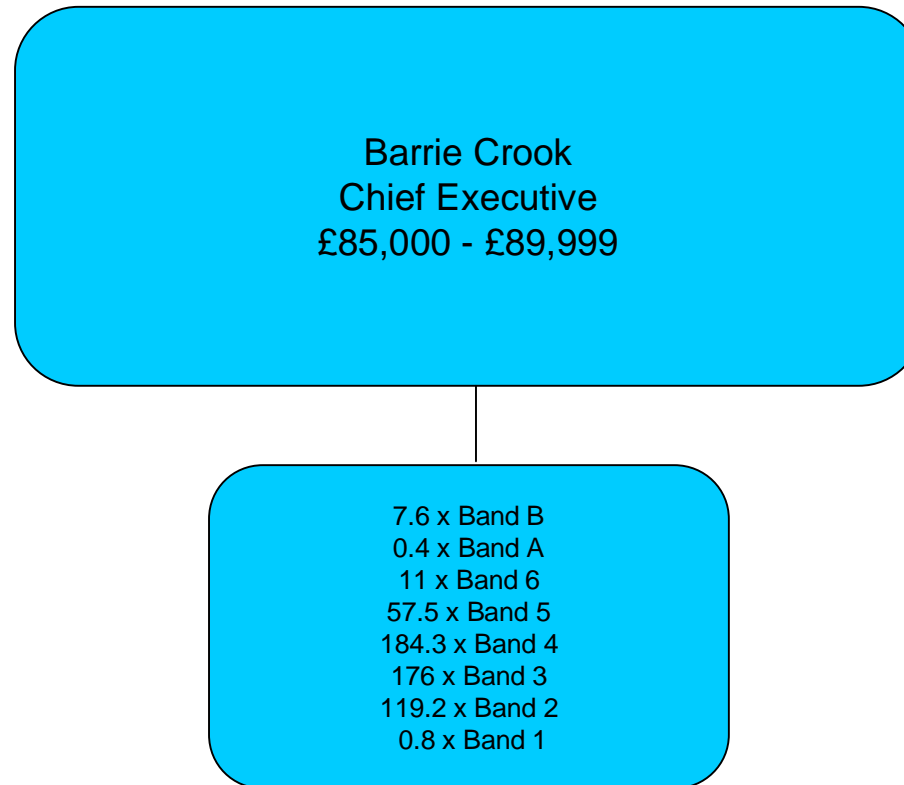


This represents the organisation as at 30 June 2010

Hampshire Probation Trust

Total staff in Trust = 557.8 FTE

Total staff salaries = £15,844,014

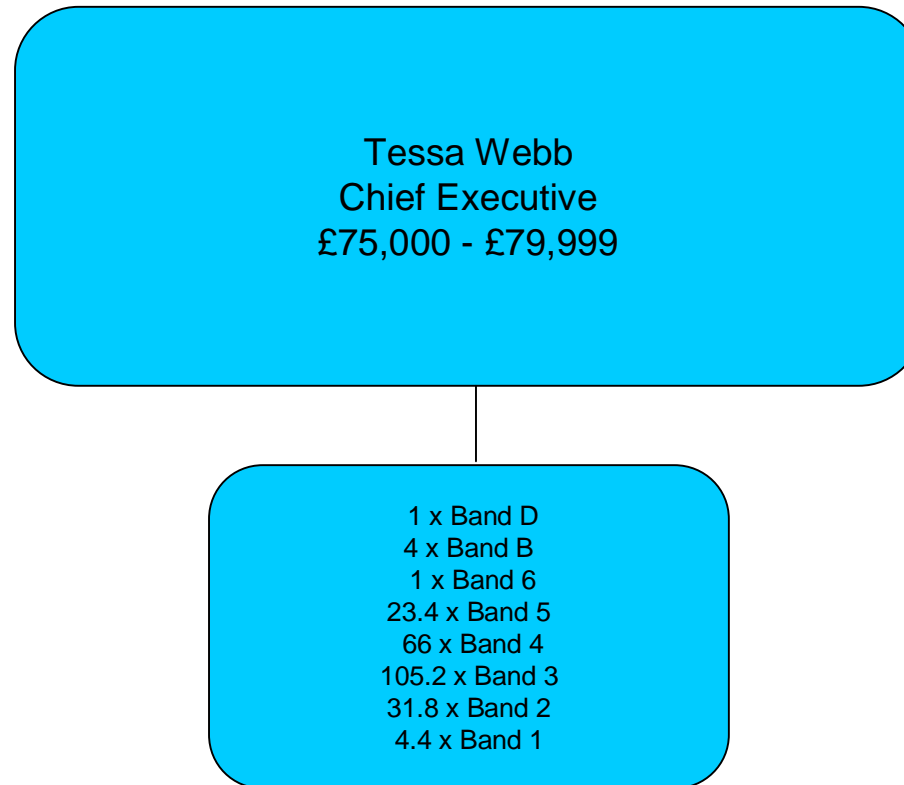


This represents the organisation as at 30 June 2010

Hertfordshire Probation Trust

Total staff in Trust= 237.8 FTE

Total staff salaries = £6,421,658

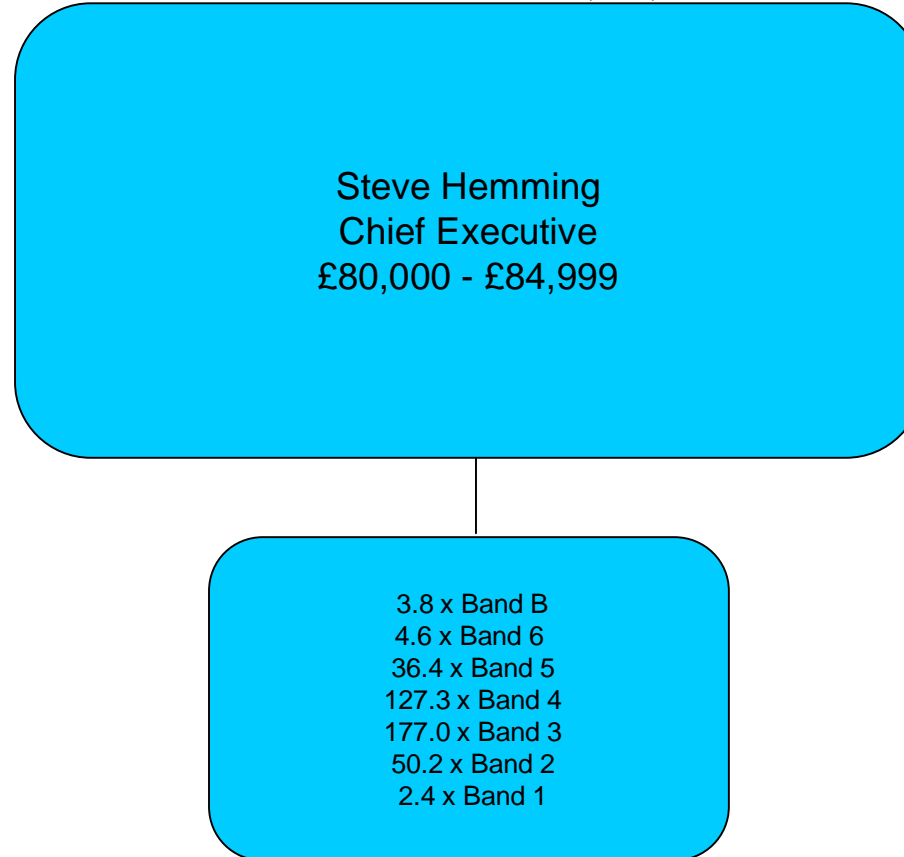


This represents the organisation as at 30 June 2010

Humberside Probation Trust

Total staff in Trust = 401.7 FTE

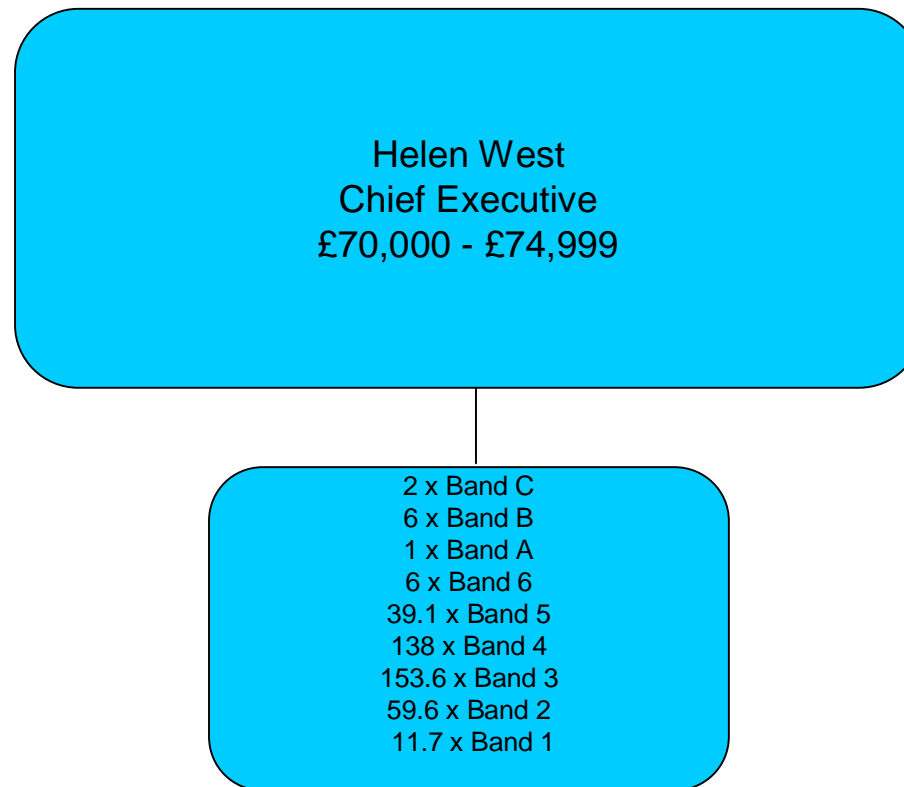
Total staff salaries = £11,036,421



This represents the organisation as at 30 June 2010

Kent Probation Trust

*Total staff in Trust = 418 FTE
Total staff salaries = £11,858,158*

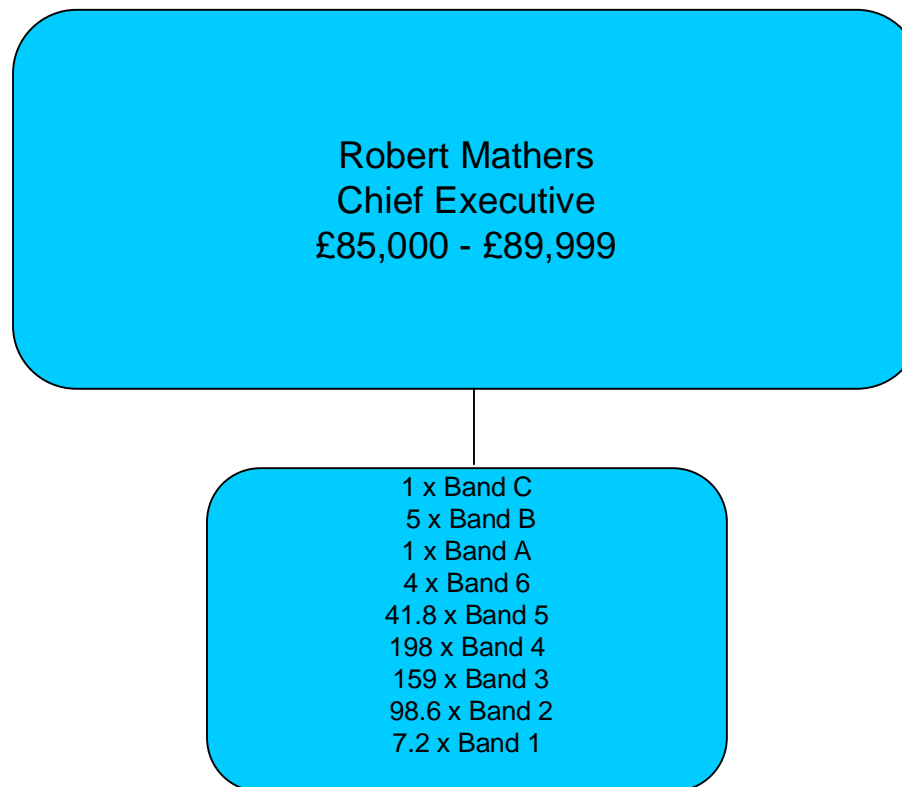


This represents the organisation as at 30 June 2010

Lancashire Probation Trust

Total staff in Trust = 516.6 FTE

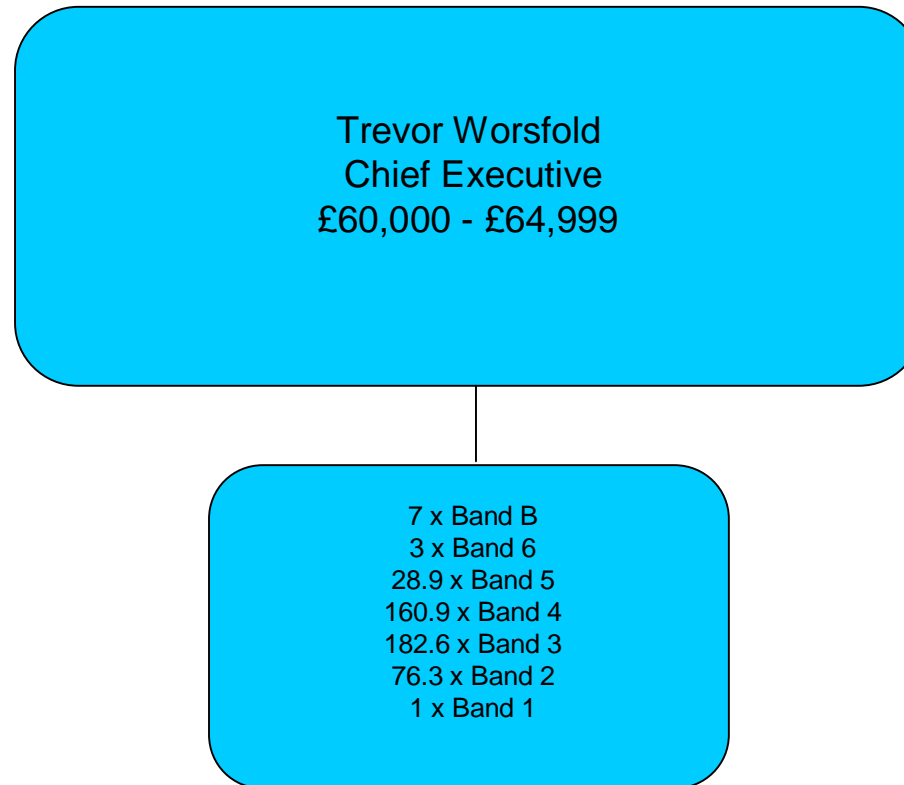
Total staff salaries = £14,599,839



This represents the organisation as at 30 June 2010

Leicestershire & Rutland Probation Trust

*Total staff in Trust = 460.7 FTE
Total staff salaries = £13,014,155*

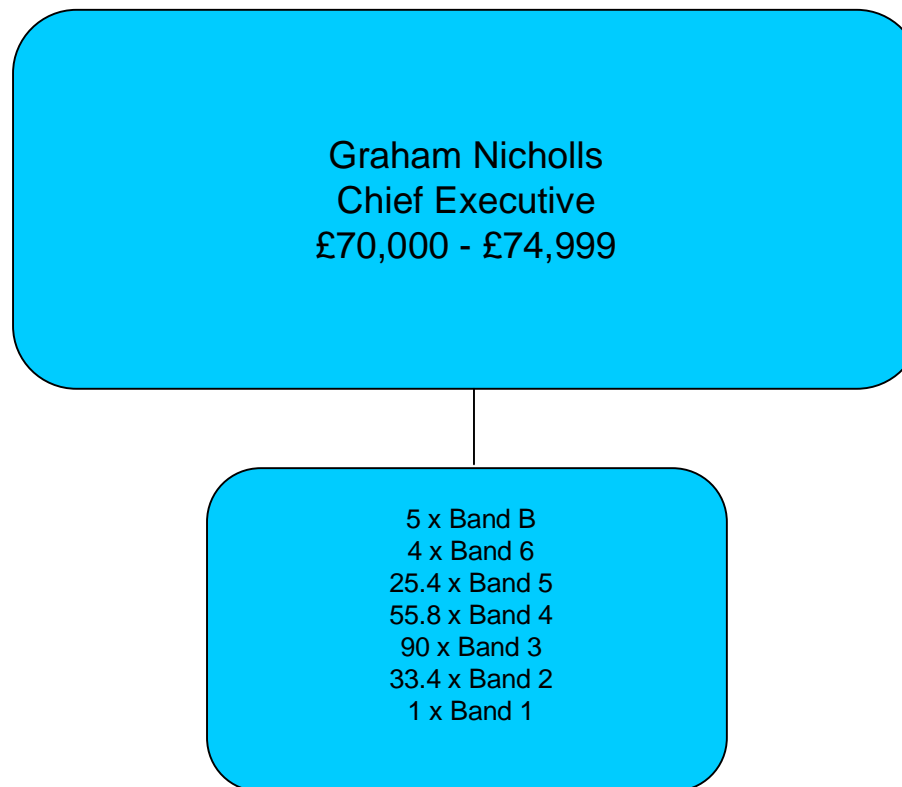


This represents the organisation as at 30 June 2010

Lincolnshire Probation Trust

Total staff in Trust = 215.6 FTE

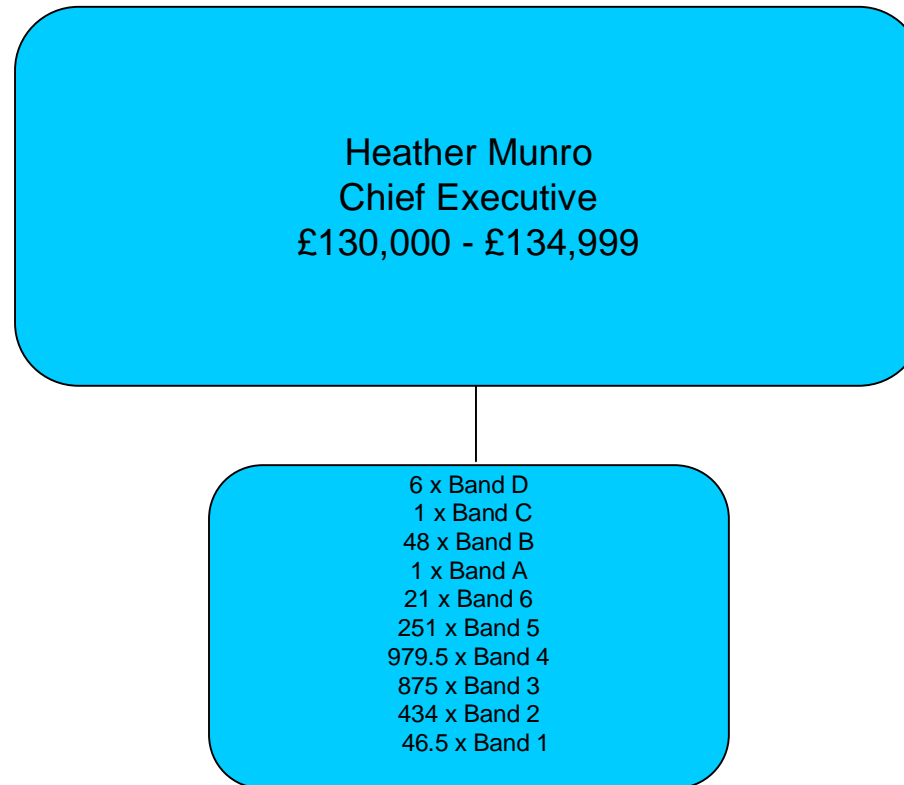
Total staff salaries = £5,987,723



This represents the organisation as at 30 June 2010

London Probation Trust

*Total staff in Trust = 2664 FTE
Total staff salaries = £75,279,673*

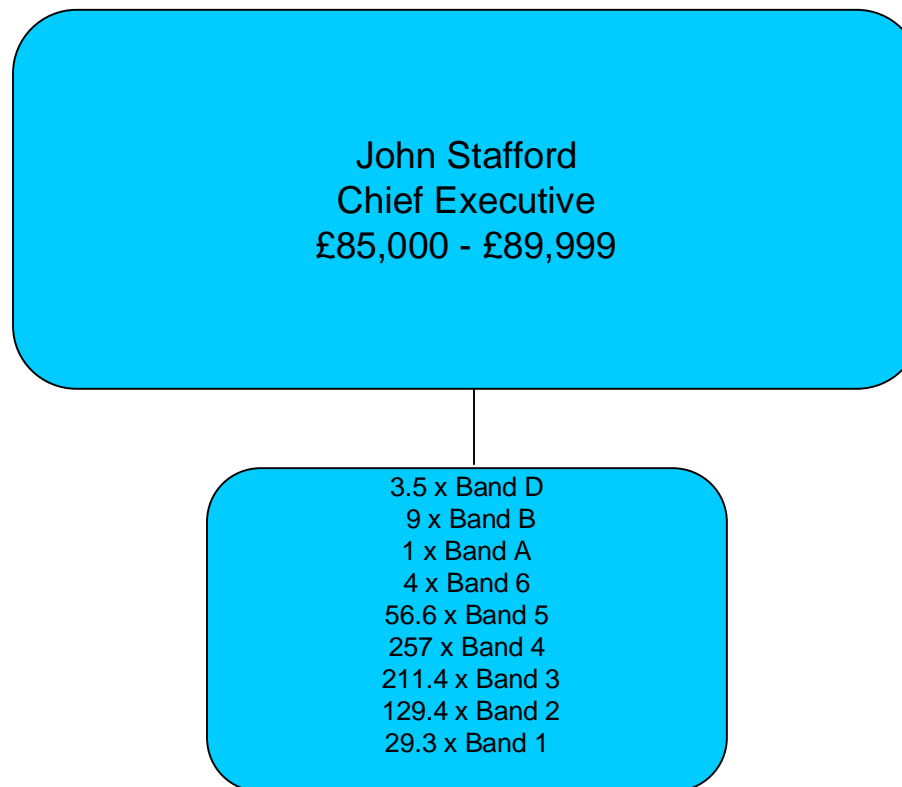


This represents the organisation as at 30 June 2010

Merseyside Probation Trust

Total staff in Trust = 702.2 FTE

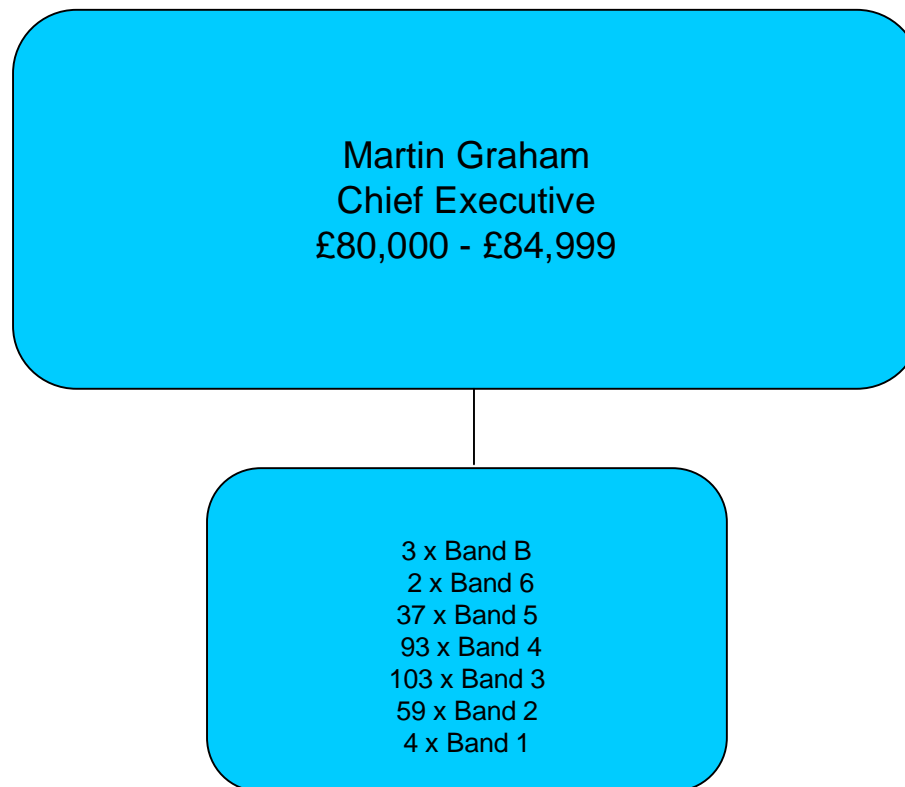
Total staff salaries = £19,185,681



This represents the organisation as at 30 June 2010

Norfolk & Suffolk Probation Trust

Total staff in Trust = 302 FTE
Total staff salaries = £13,129,929

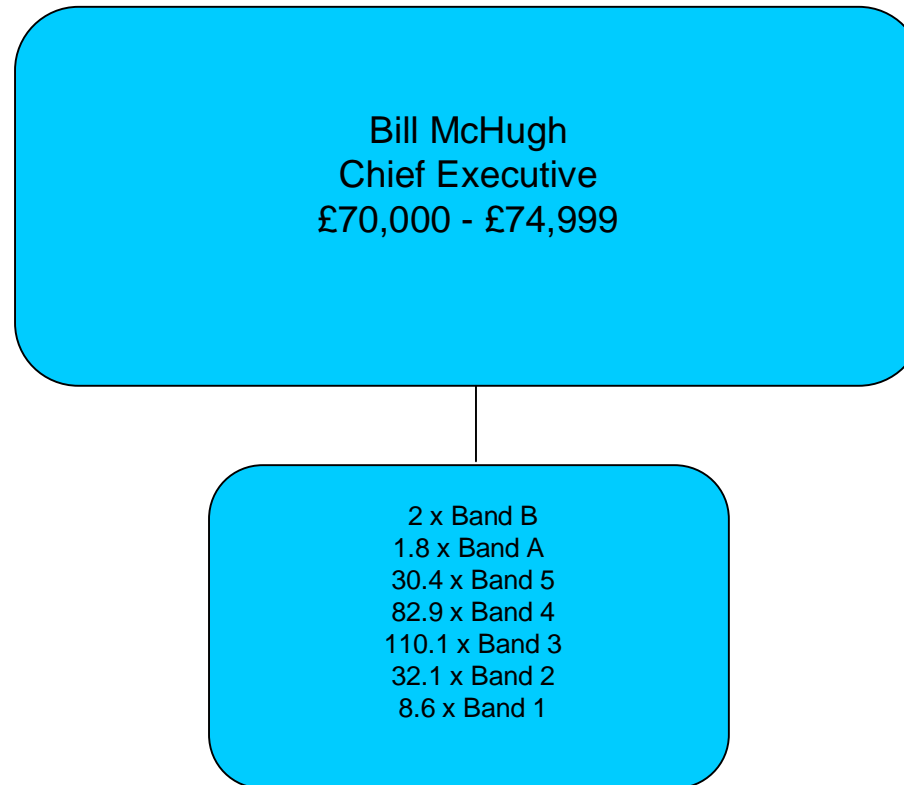


This represents the organisation as at 30 June 2010

Northamptonshire Probation Trust

Total staff in Trust = 268.9 FTE

Total staff salaries = £6,681,661

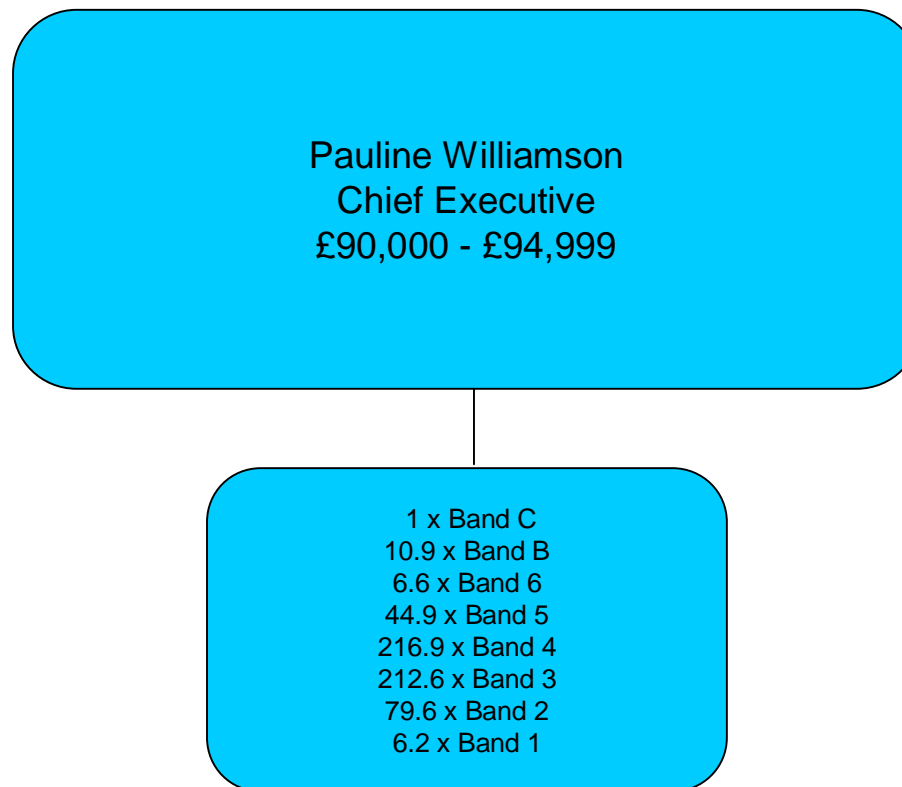


This represents the organisation as at 30 June 2010

Northumbria Probation Trust

Total staff in Trust = 579.7 FTE

Total staff salaries = £17,057,178

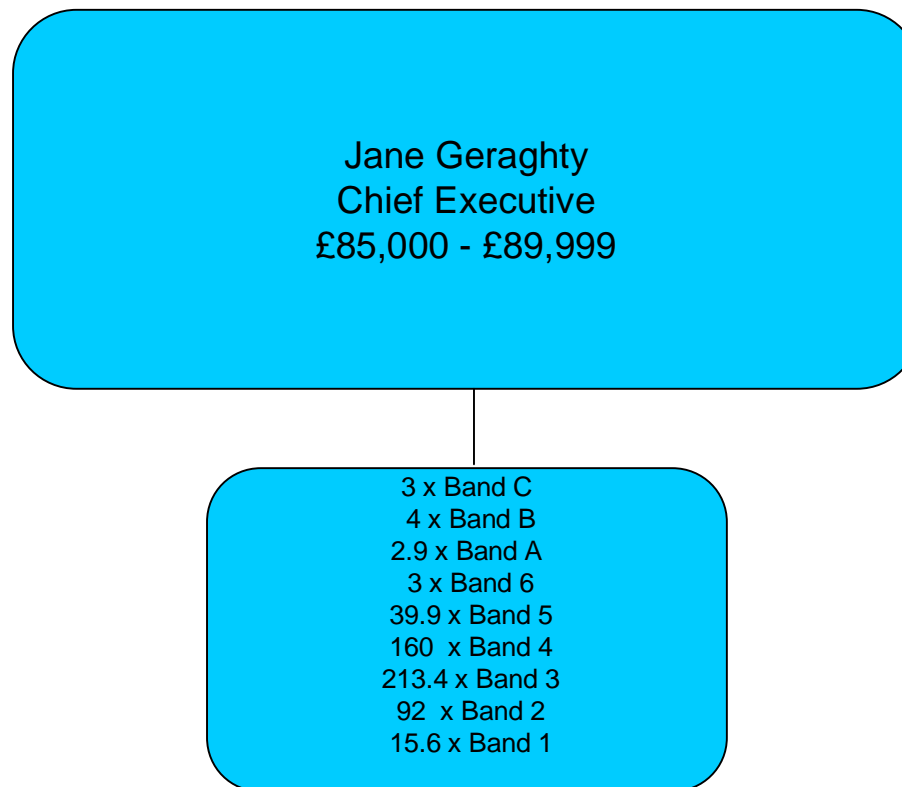


This represents the organisation as at 30 June 2010

Nottinghamshire Probation Trust

Total staff in Trust = 534.8 FTE

Total staff salaries = £14,109,757

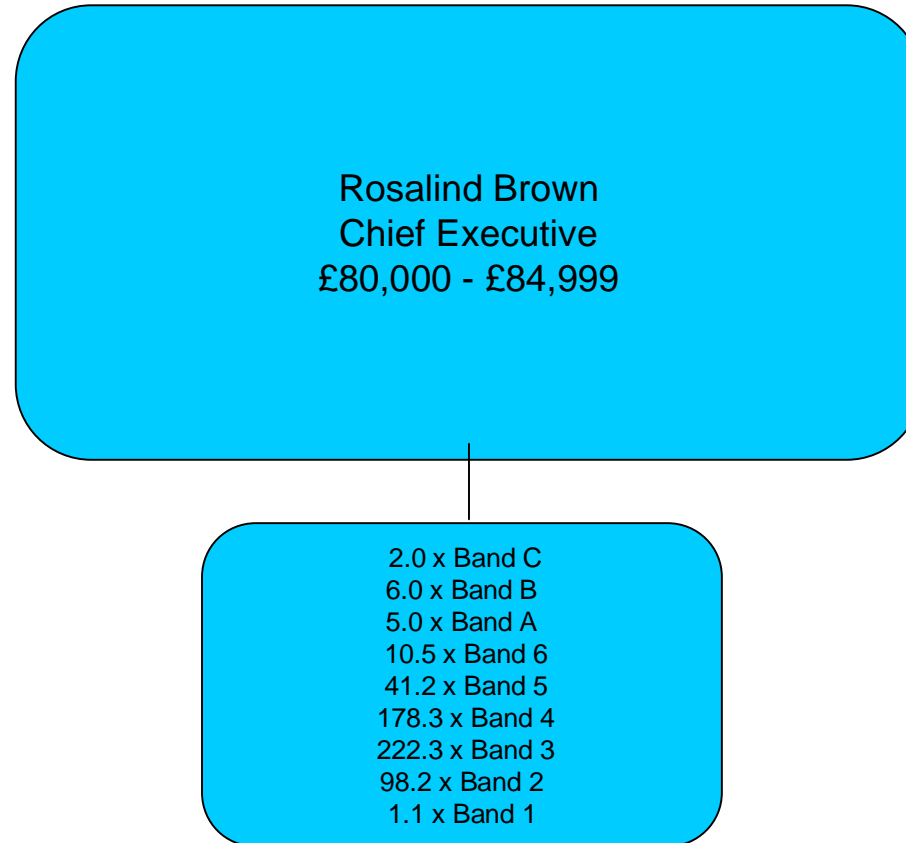


This represents the organisation as at 30 June 2010

South Yorkshire Probation Trust

Total staff in Trust = 564.6 FTE

Total staff salaries = £ 16,014,335

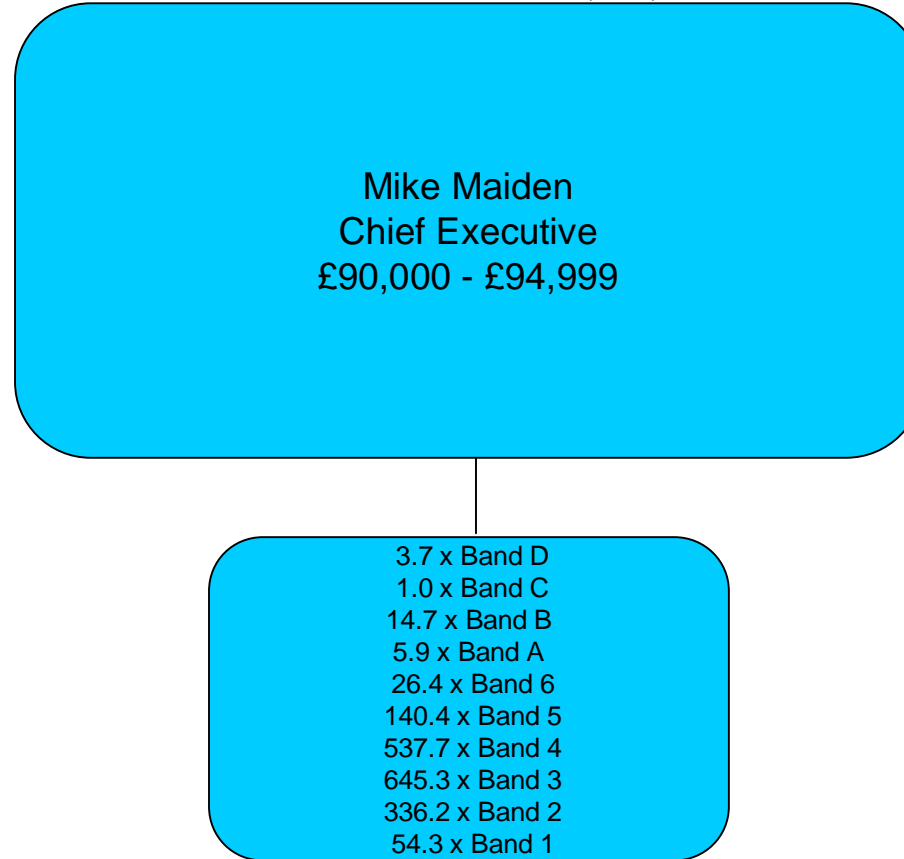


This represents the organisation as at 30 June 2010

Staffordshire & West Midlands Probation Trust

Total staff in Trust = 1,765.6 FTE

Total staff salaries = £47,529,263

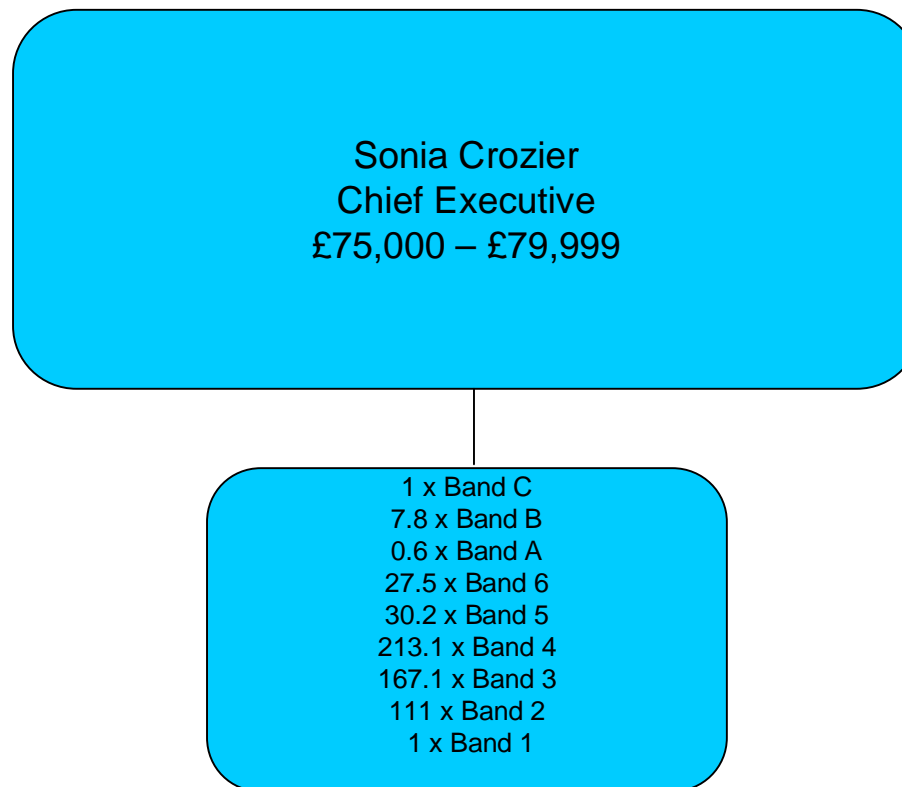


This represents the organisation as at 30 June 2010

Surrey & Sussex Probation Trust

Total staff in Trust = 560.3 FTE

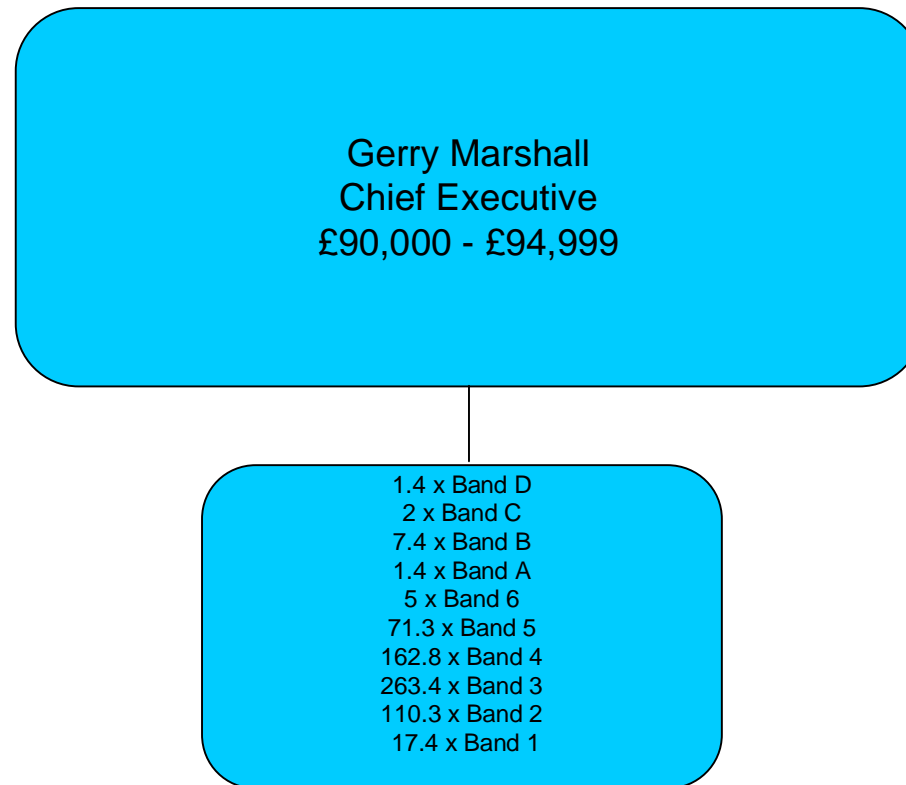
Total staff salaries = £16,746,121



This represents the organisation as at 30 June 2010

Thames Valley Probation Trust

Total staff in Trust = 643.4 FTE
Total staff salaries = £16,779,317

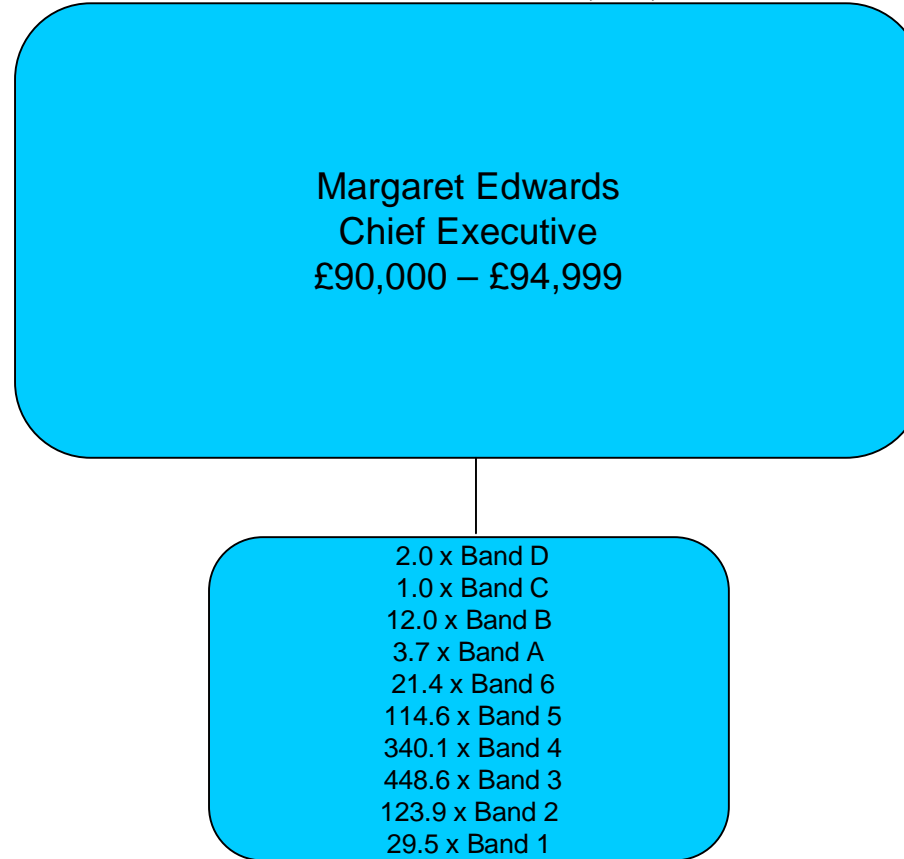


This represents the organisation as at 30 June 2010

Wales Probation Trust

Total staff in Trust = 1,096.8 FTE

Total staff salaries = £30,672,961

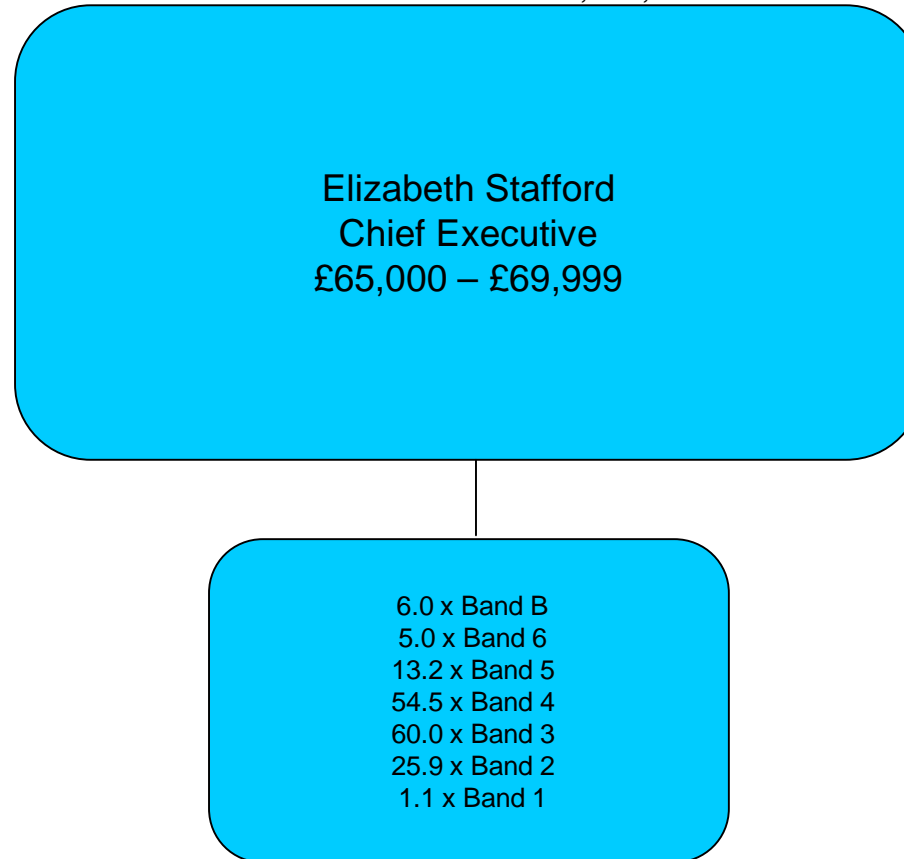


This represents the organisation as at 30 June 2010

Warwickshire Probation Trust

Total staff in Trust = 165.7 FTE

Total staff salaries = £5,031,028

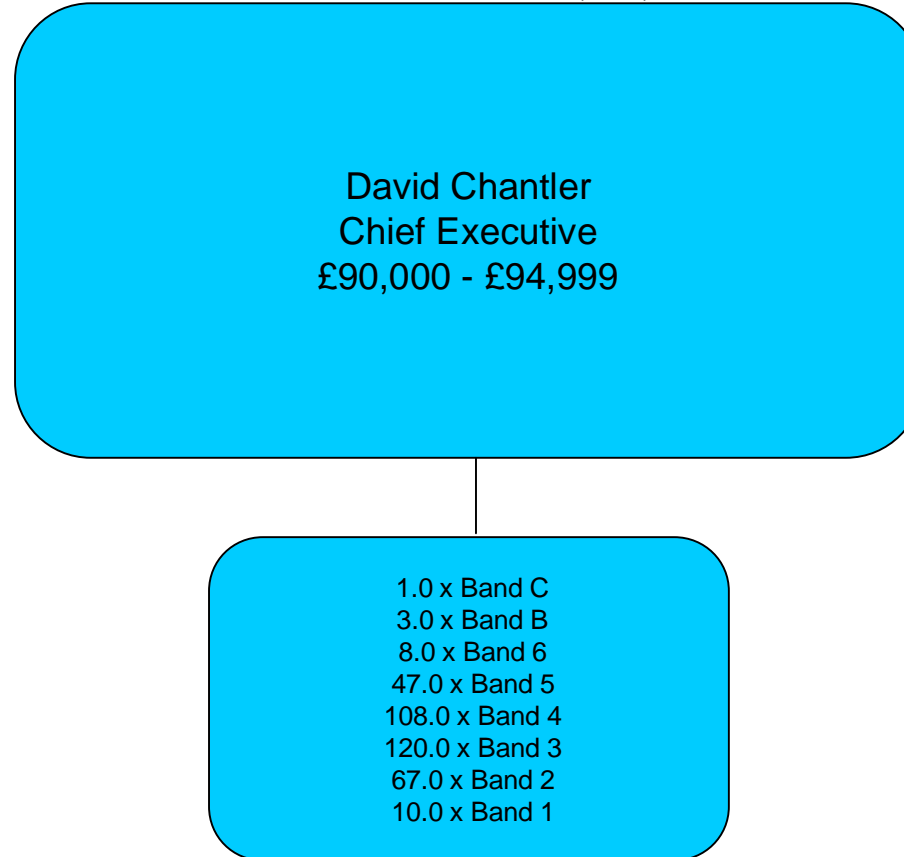


This represents the organisation as at 30 June 2010

West Mercia Probation Trust

Total staff in Trust = 364 FTE

Total staff salaries = £9,758,429

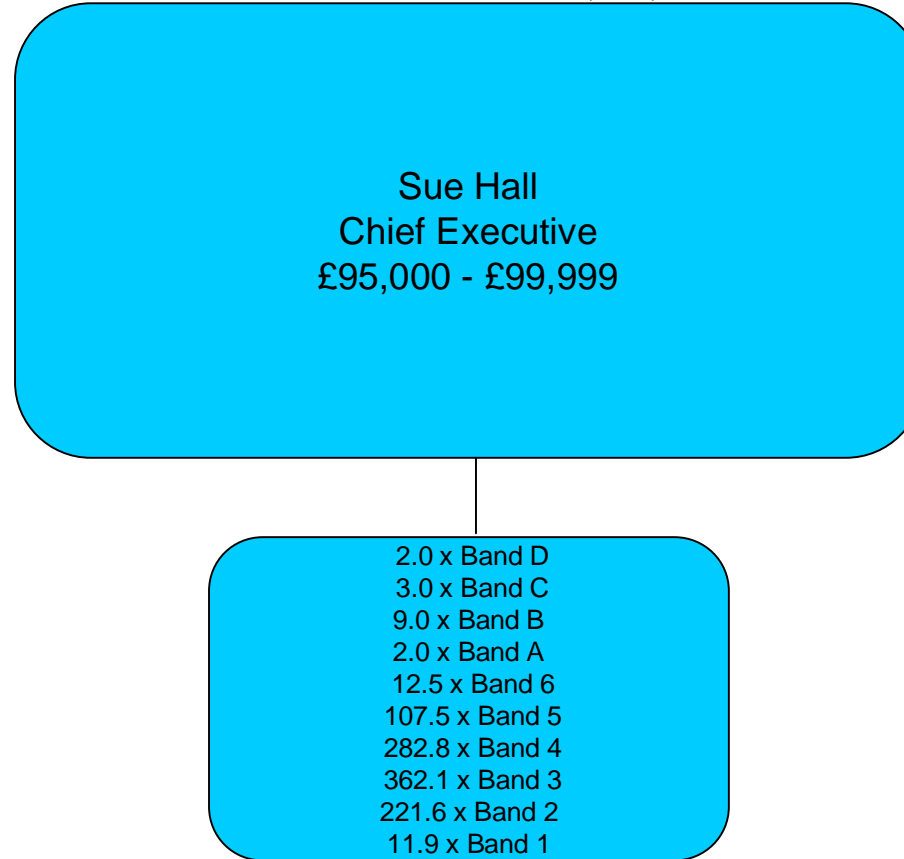


This represents the organisation as at 30 June 2010

West Yorkshire Probation Trust

Total staff in Trust = 1,014.4 FTE

Total staff salaries = £30,175,634

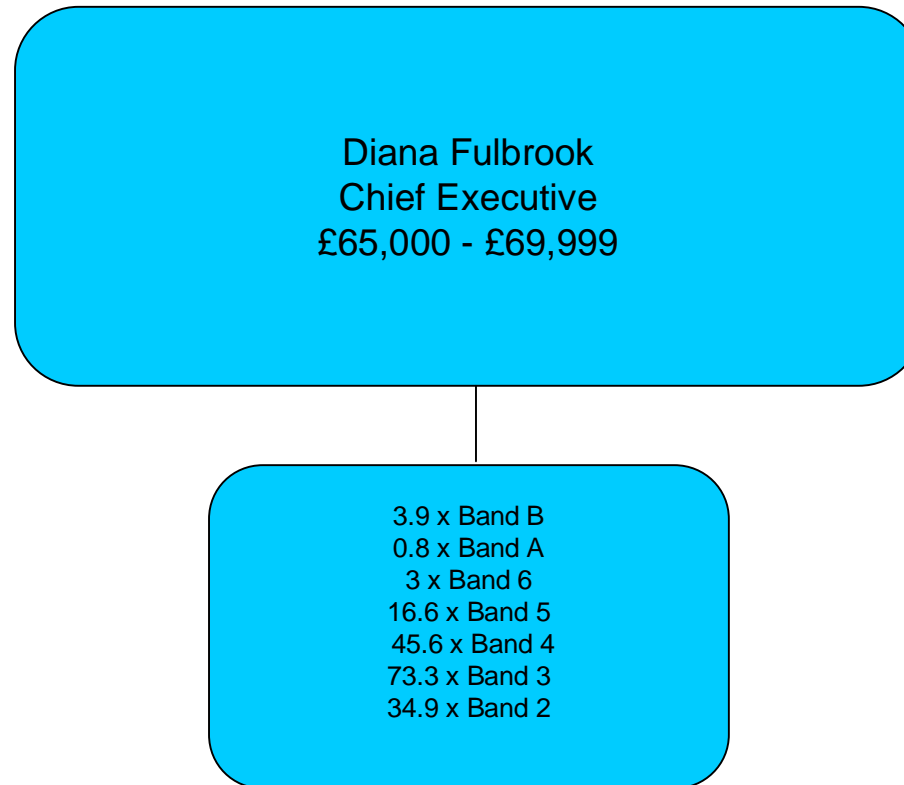


This represents the organisation as at 30 June 2010

Wiltshire Probation Trust

Total staff in Trust = 179.1 FTE

Total staff salaries = £4,501,337

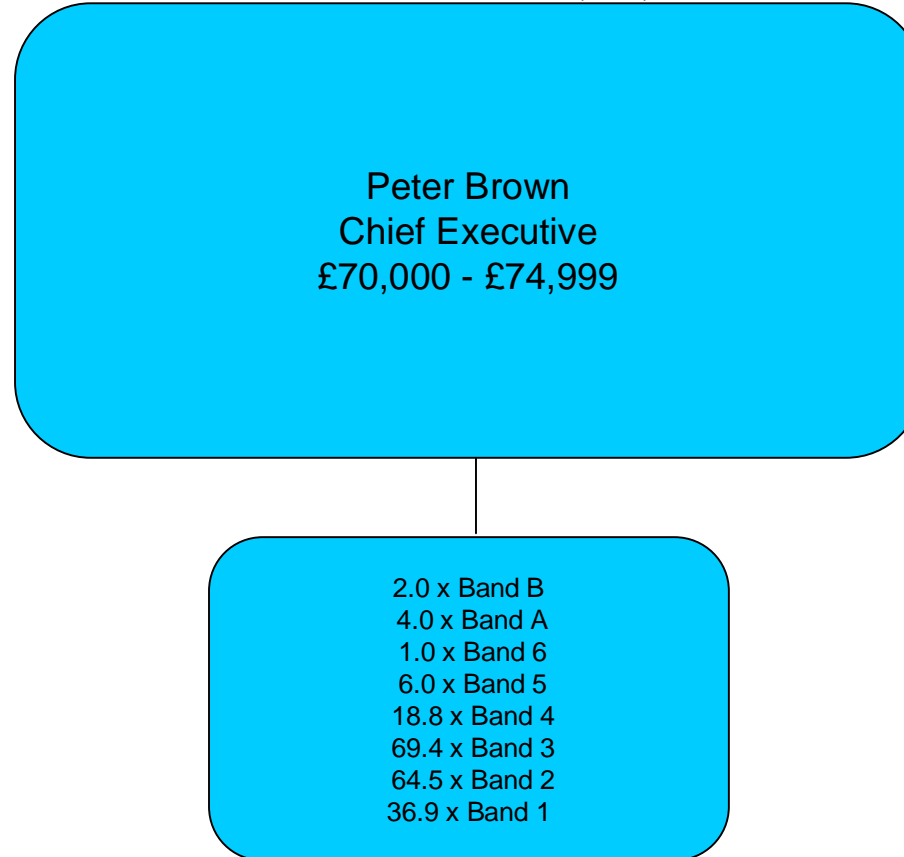


This represents the organisation as at 30 June 2010

York & North Yorkshire Probation Trust

Total staff in Trust = 202.6 FTE

Total staff salaries = £7,799,240



This represents the organisation as at 30 June 2010



Probation staff - pay bands and ranges as at June 2010

Key to pay bands and ranges in the organograms:

Band D = Assistant Chief Officer; £66,427 - £86,914;
Band C = Assistant Chief Officer; £56,096 - £71,227;
Band B = Assistant Chief Officer; £49,294 - £62,588;
Band A = Assistant Chief Officer; £42,435 - £52,323;

Band 6 = Area Manager; £39,037 - £46,650;
Band 5 = Senior Probation Officer; £34,677 - £39,424;
Band 4 = Probation Officer; £28,185 - £35,727;
Band 3 = Probation Services Officer; £21,391 - £27,102;
Band 2 = Case Administrator; £16,905 - £20,566;
Band 1 = Administrative Staff; £14,182 - £16,420.

This represents the organisation as at 30 June 2010