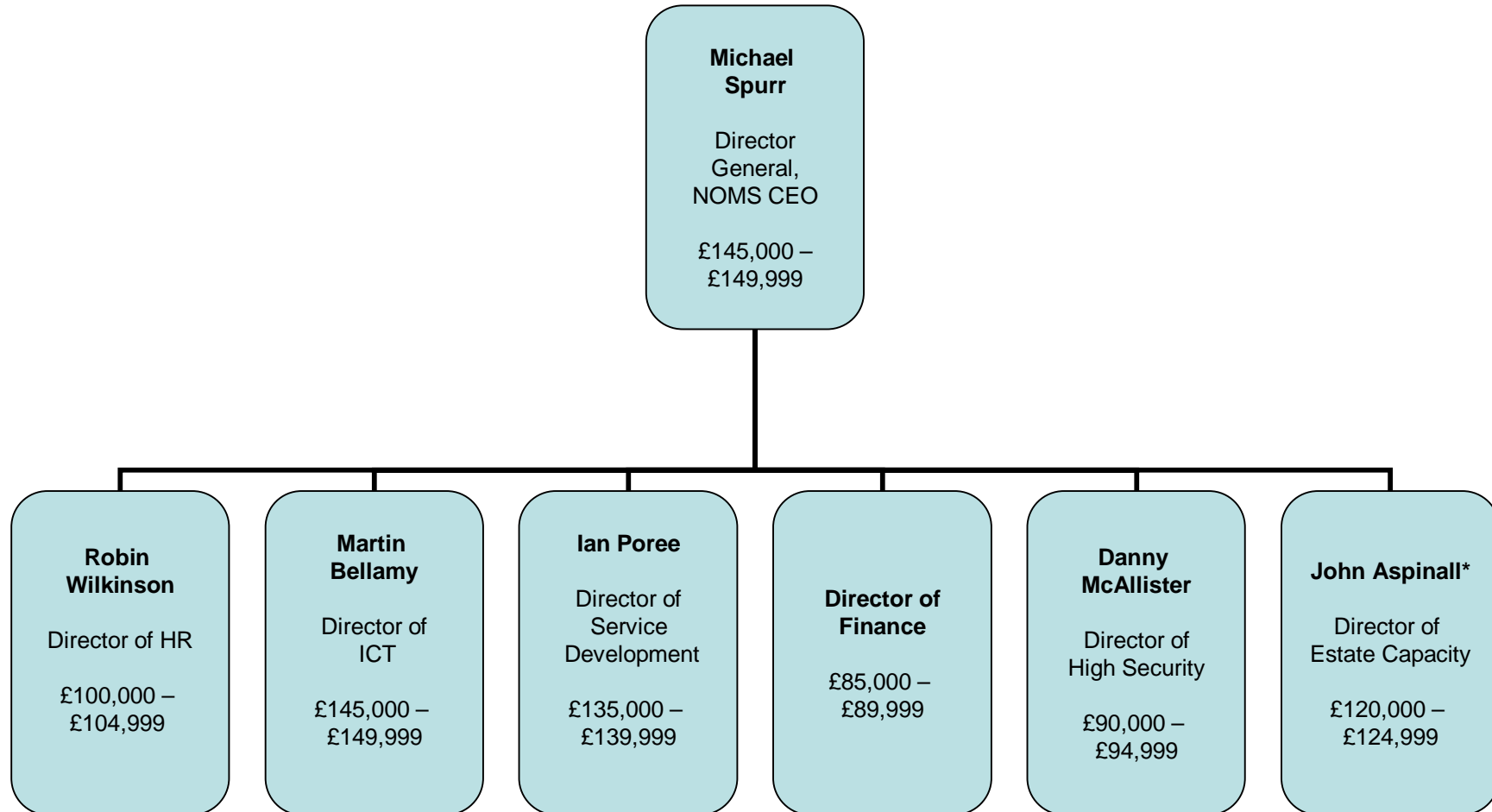




National Offender Management Service

HQ



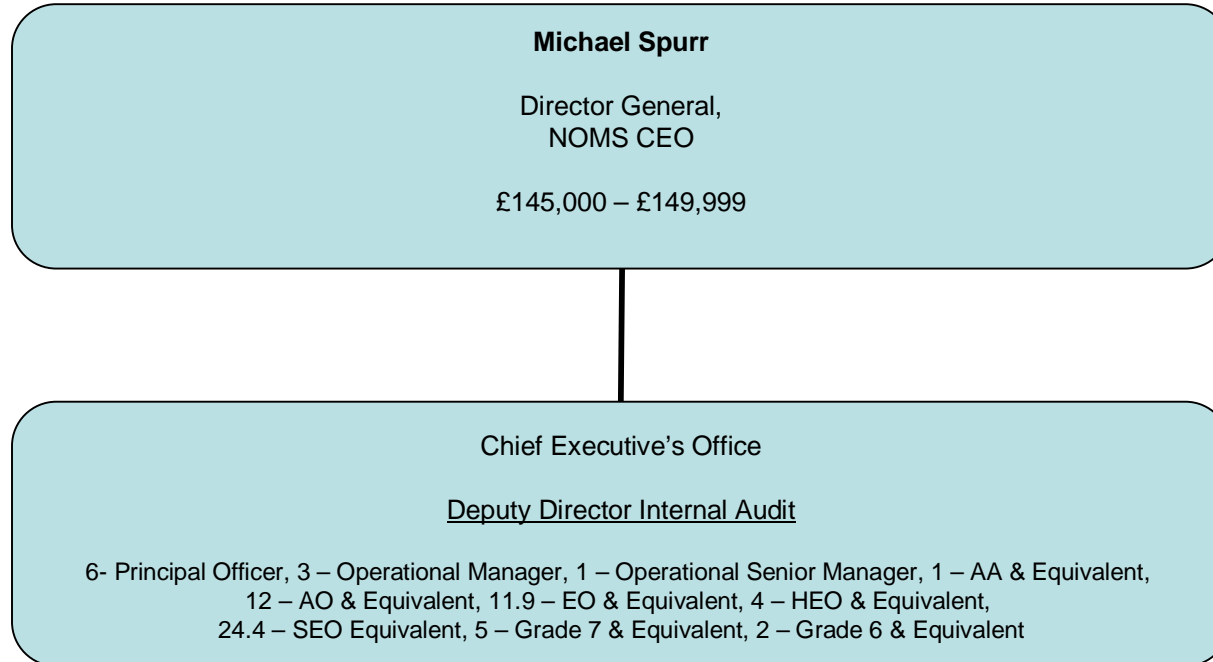
*John Aspinall held two roles at 30 June 2010 as MoJ Strategic Estate Director, and Director of Estate Capacity in NOMS

This represents the department as at 30 June 2010.
See final slide for a key of the NOMS grades used.



NOMS - Chief Executive's Office

Total salary costs = £3,432,451



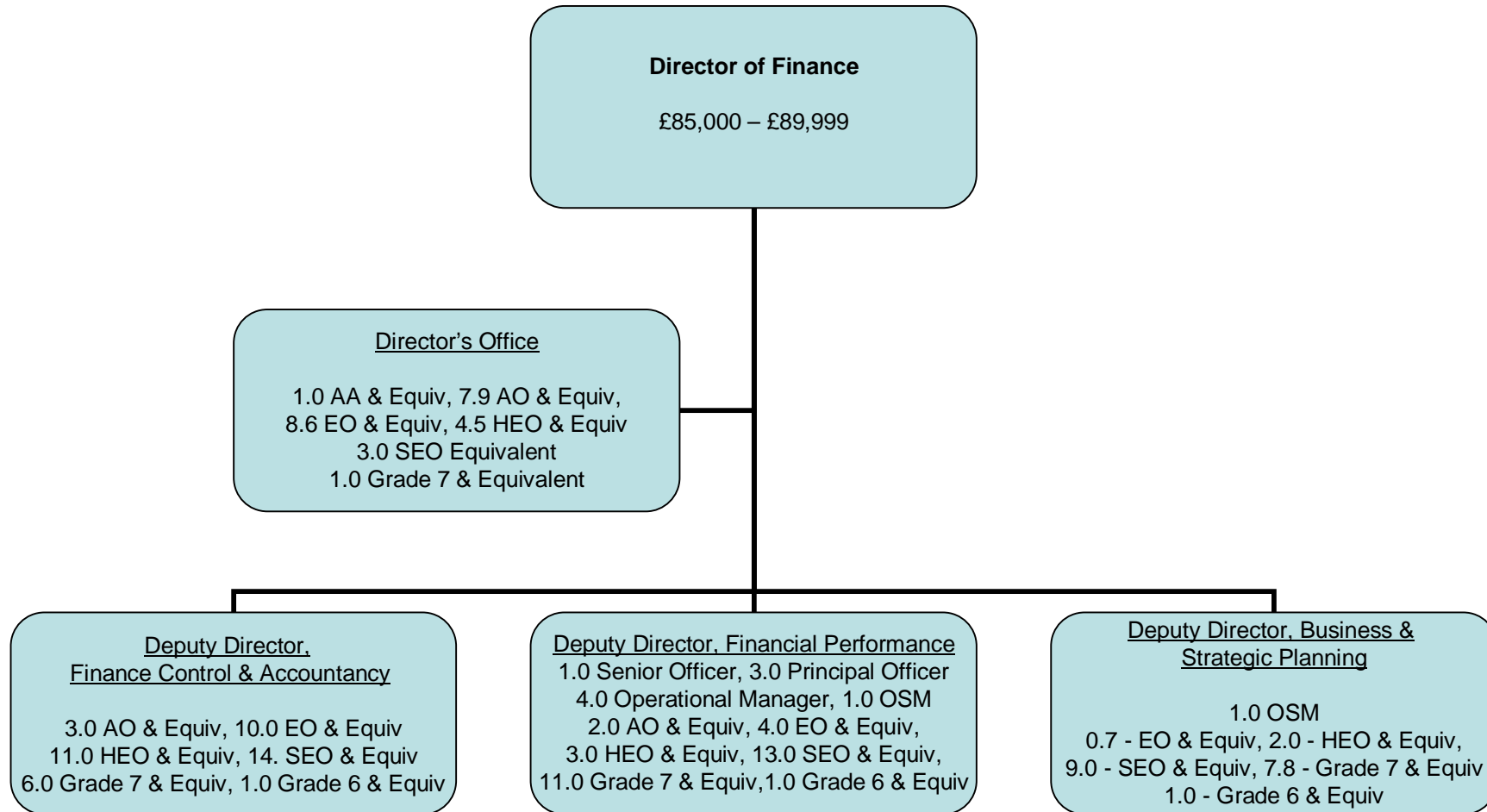


NOMS

Finance Directorate

Total staff in Group = 140.0 FTE

Total salary costs = £5,768,707



This represents the department as at 30 June 2010.
See final slide for a key of the NOMS grades used.

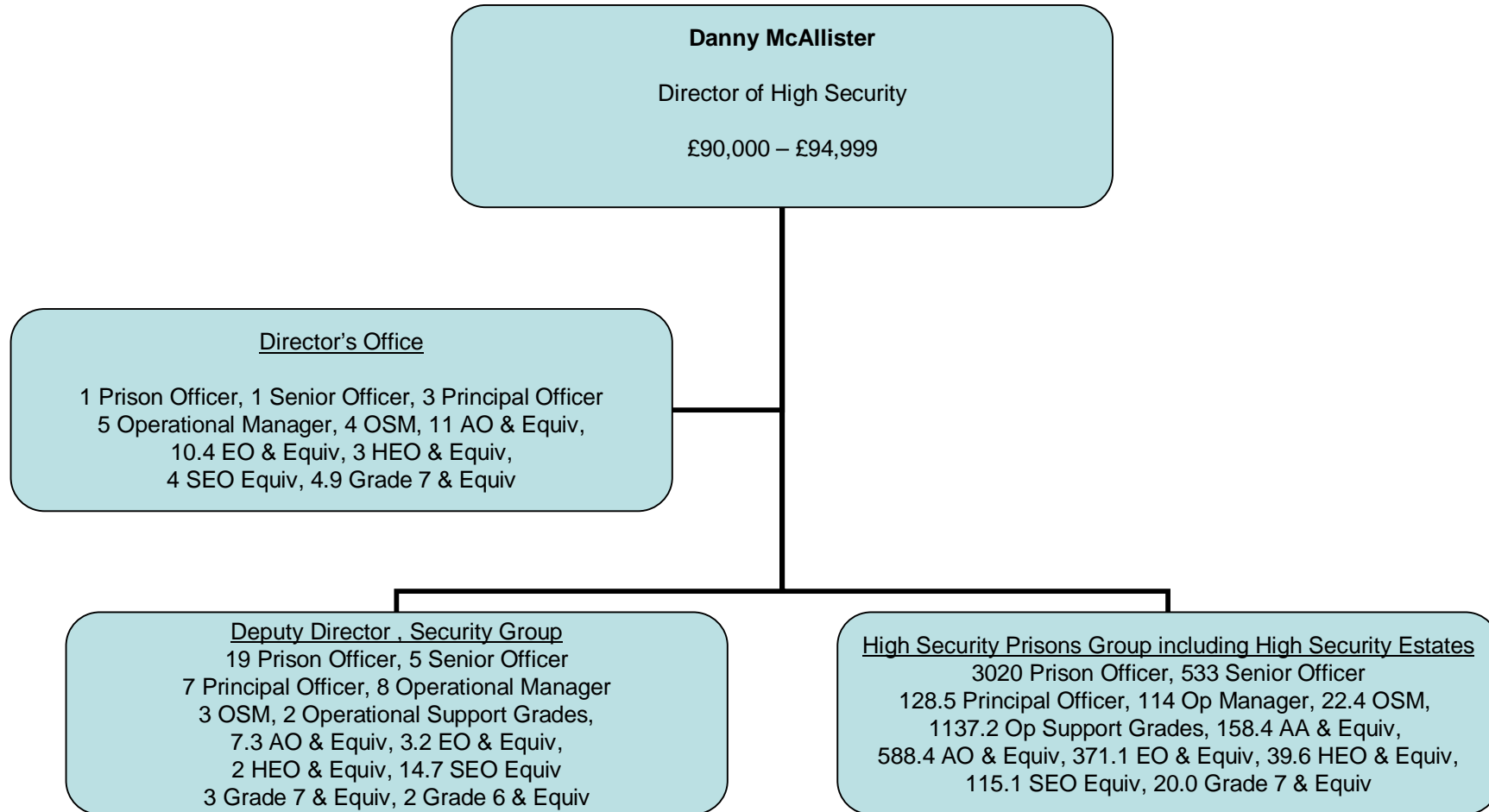


NOMS

High Security Directorate

Total Staff in Group = 6373.2 FTE

Total salary costs = £170,265,247



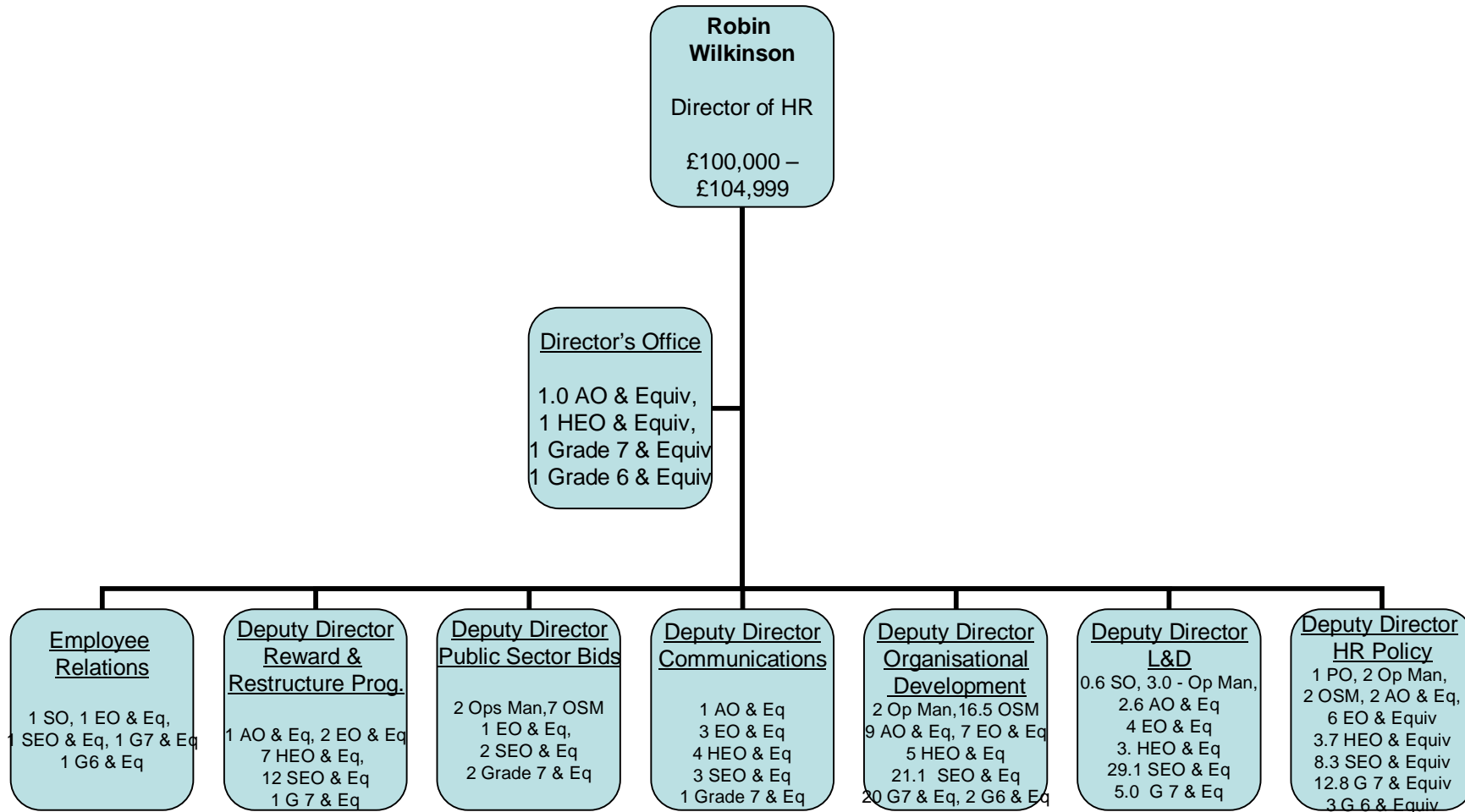
This represents the department as at 30 June 2010.
See final slide for a key of the NOMS grades used.



NOMS HR Directorate

Total Staff in Group = 235.7 FTE

Total salary costs = £11,396,385



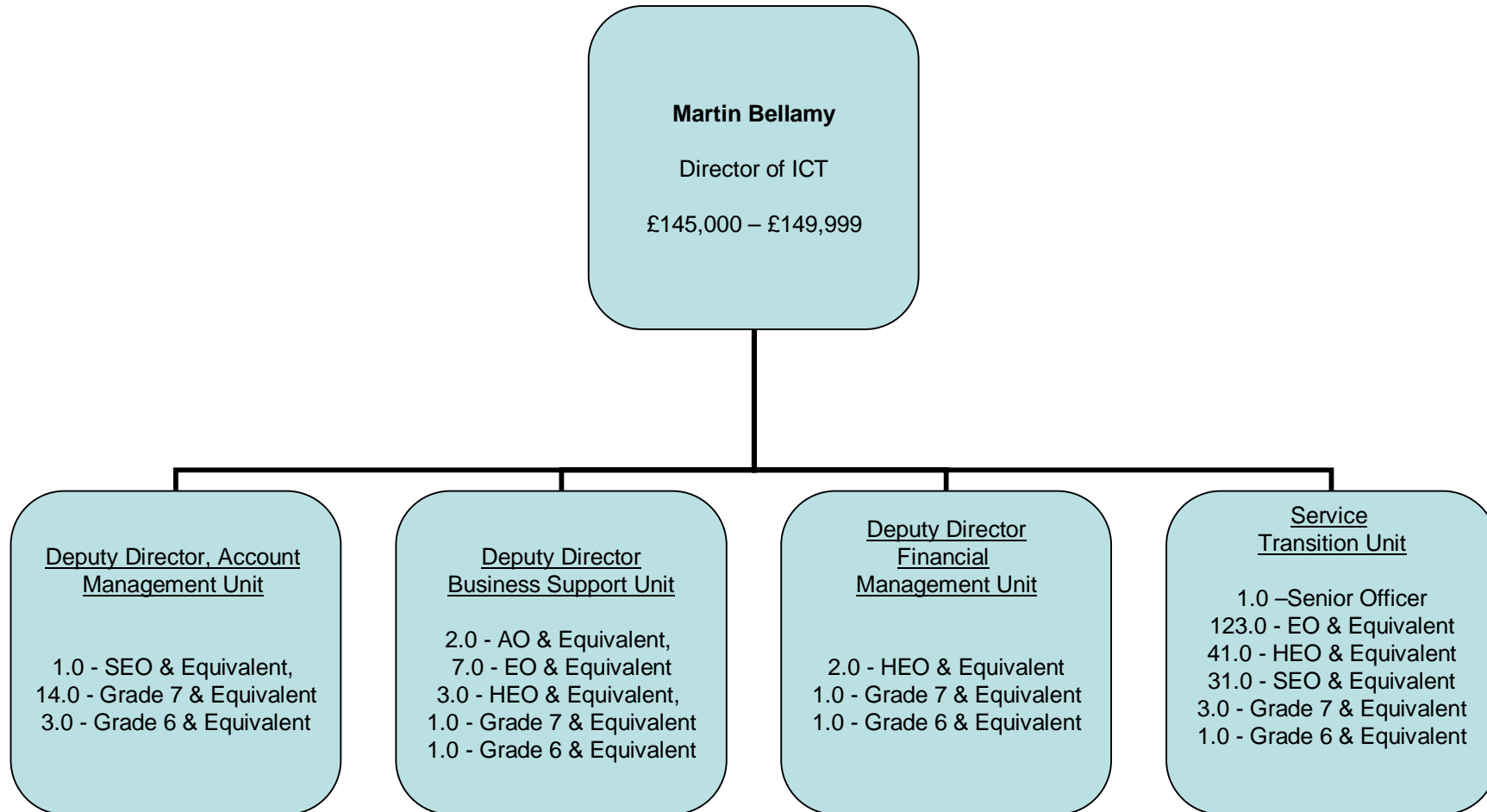
This represents the department as at 30 June 2010.
See final slide for a key of the NOMS grades used.



NOMS ICT Directorate

Total Staff in Group = 240.0 FTE

Total salary costs = £8,042,859



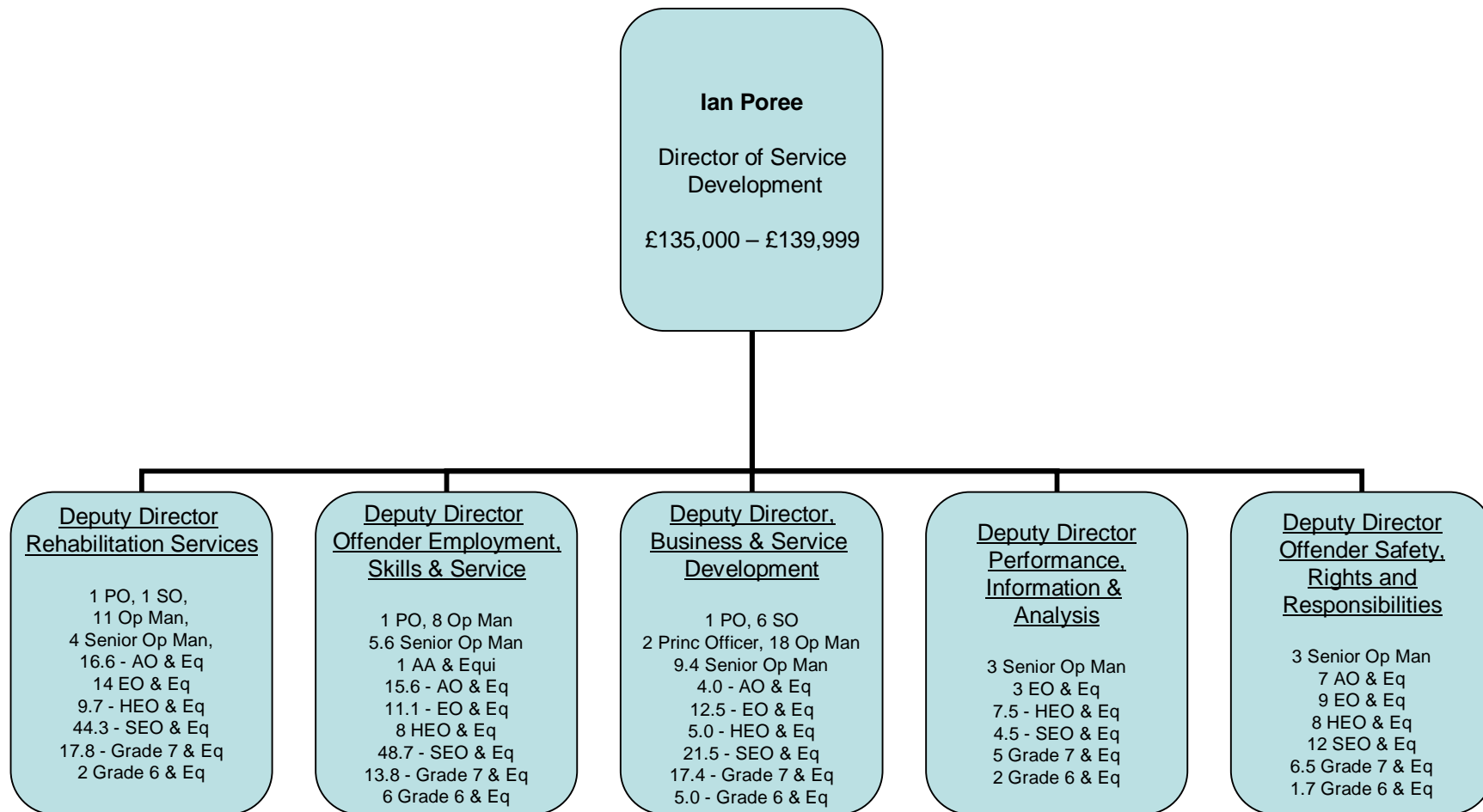
This represents the department as at 30 June 2010.
See final slide for a key of the NOMS grades used.

NOMS

Service Development Directorate

Total Staff in Group = 433.2 FTE

Total salary costs = £18,581,808



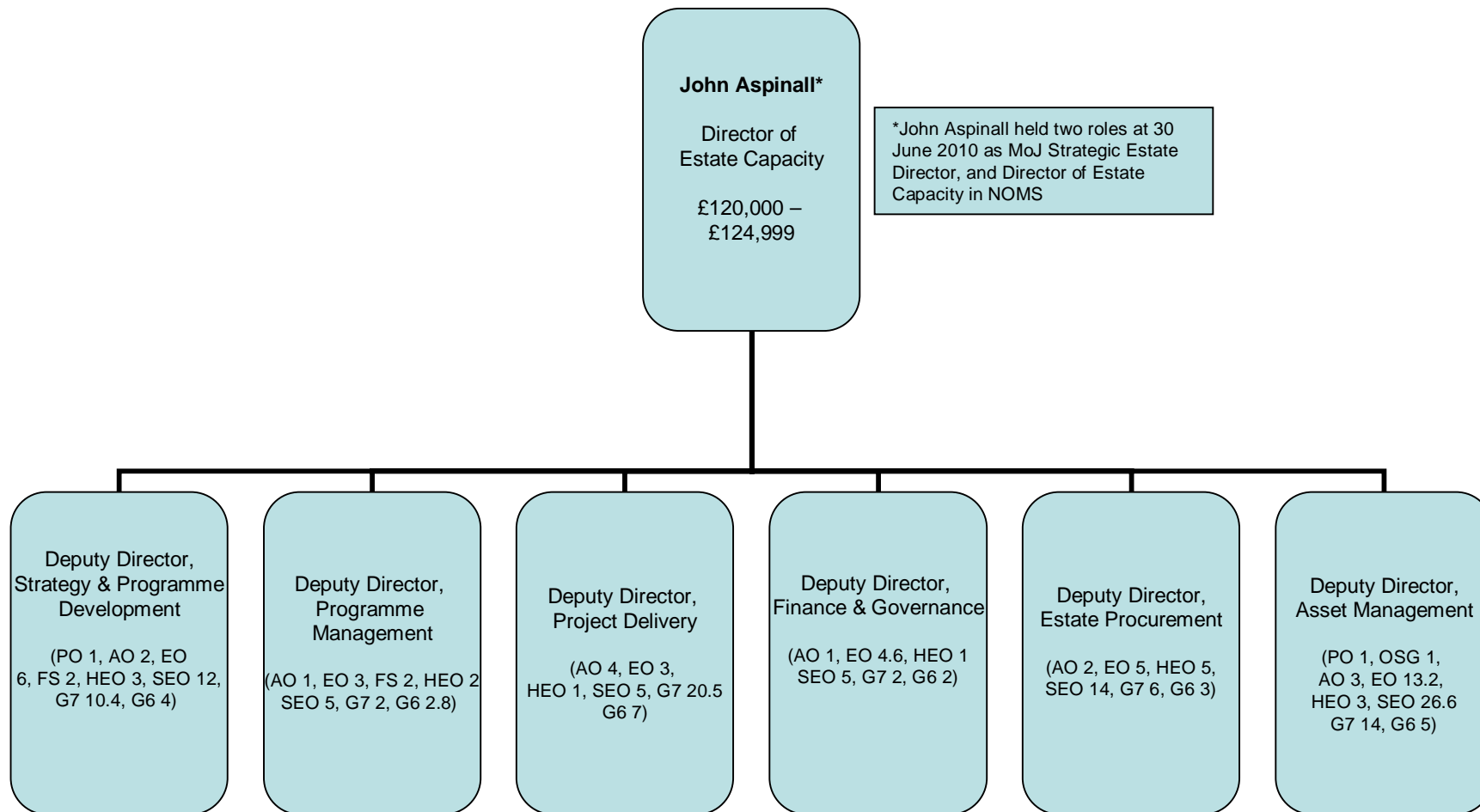
This represents the department as at 30 June 2010.
See final slide for a key of the NOMS grades used.

NOMS

Estate Capacity Directorate

Total Staff in Group = 231.9

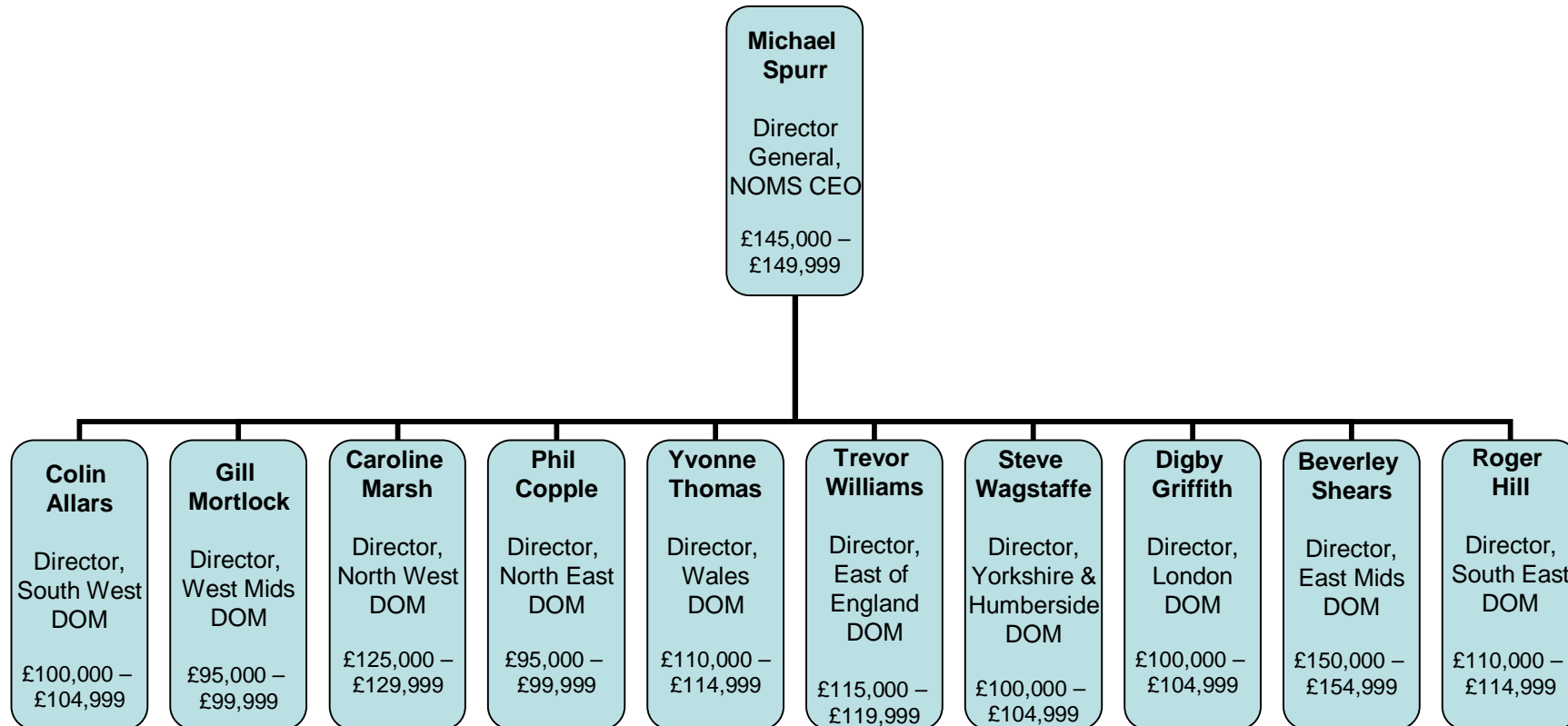
Total salary costs = £9,700,607



This represents the department as at 30 June 2010.
See final slide for a key of the NOMS grades used.



National Offender Management Service - Directors of Offender Management



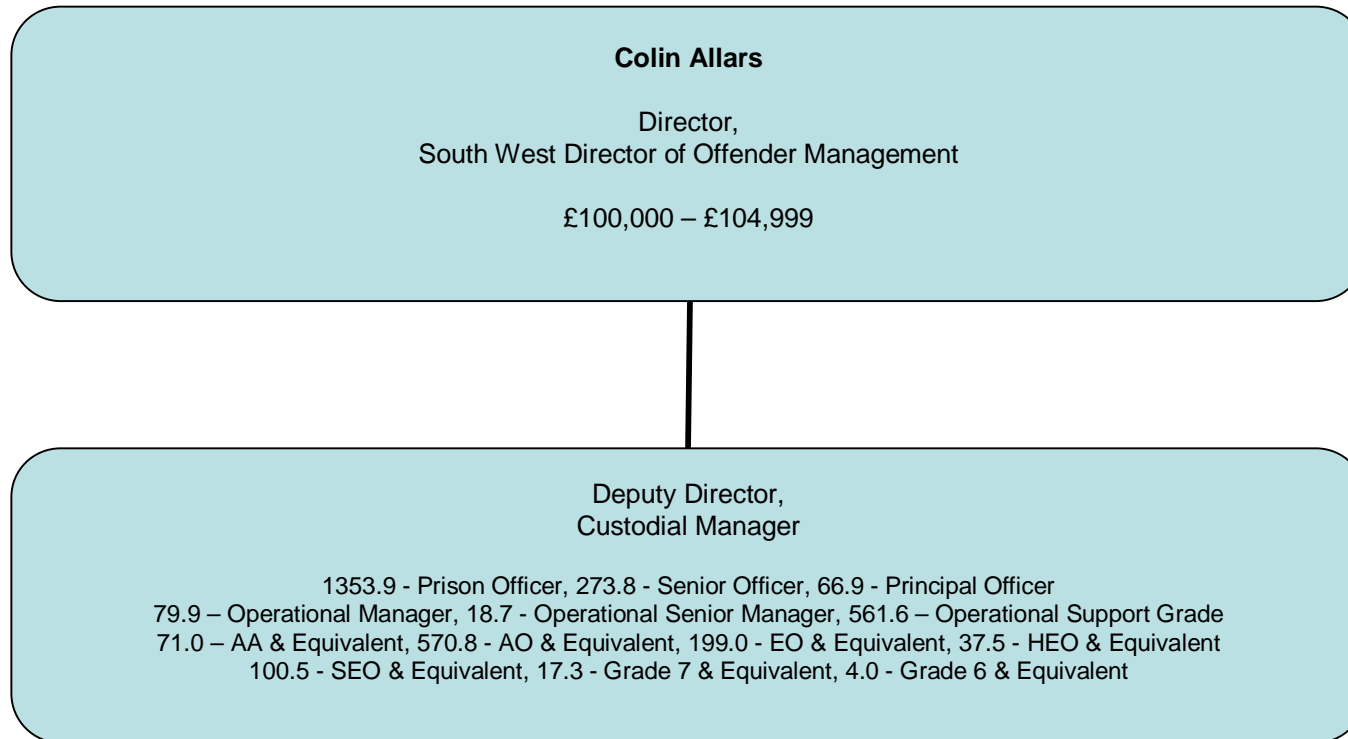
This represents the department as at 30 June 2010.
See final slide for a key of the NOMS grades used.



NOMS
Director of Offender Management
South West

Total Staff in Group = 3356.9 FTE

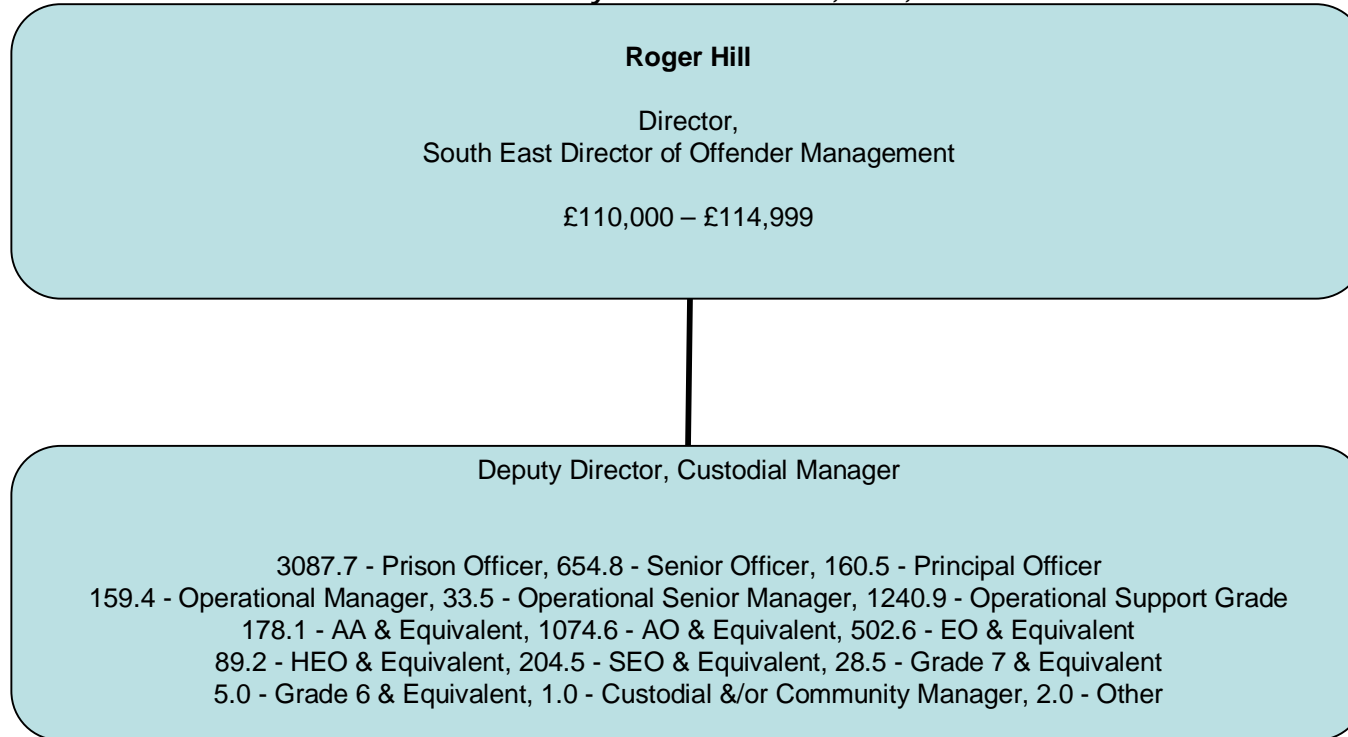
Total salary costs = £84,807,935





NOMS
Director of Offender Management
South East

Total Staff in Group = 7422.3 FTE
Total salary costs = £189,872,034



This represents the department as at 30 June 2010.
See final slide for a key of the NOMS grades used.



NOMS
Director of Offender Management
North East

Total Staff in Group = 2624.2 FTE

Total salary costs = £66,288,808

Phil Copple

Director,
North East Director of Offender Management

£95,000 – £99,999

Deputy Director, Custodial Manager

1173.6 - Prison Officer, 199.3 - Senior Officer, 42.8 - Principal Officer
76.6 - Operational Manager, 13.0 - Operational Senior Manager, 429.0 - Operational Support Grade
91.3 - AA & Equivalent, 378.8 - AO & Equivalent, 135.9 - EO & Equivalent
20.0 - HEO & Equivalent, 51.5 - SEO & Equivalent, 7.0 - Grade 7 & Equivalent
2.4 - Grade 6 & Equivalent, 1.0 - Custodial &/or Community Manager



NOMS
Director of Offender Management
North West

Total Staff in Group = 5006.8 FTE

Total salary costs = £126,518,549

Caroline Marsh

Director,
North West Director of Offender Management

£125,000 – £129,999

Deputy Director, Custodial Manager

2207.5 - Prison Officer, 398.2 - Senior Officer, 107.3 - Principal Officer
120.1 - Operational Manager, 27.6 - Operational Senior Manager, 804.2 - Operational Support Grade
121.0 - AA & Equivalent, 706.6 - AO & Equivalent, 305.0 - EO & Equivalent
48.0 - HEO & Equivalent, 141.6 - SEO & Equivalent, 14.7 - Grade 7 & Equivalent
3.0 - Grade 6 & Equivalent



NOMS
Director of Offender Management
East Midlands

Total Staff in Group = 5074 FTE

Total salary costs = £117,713,902

Beverley Shears

Director,
East Mids Director of Offender Management

£150,000 – £154,999

Deputy Director, Custodial Manager

2000.2 - Prison Officer, 386.7 - Senior Officer, 87.1 - Principal Officer
103.4 - Operational Manager, 23.5 - Operational Senior Manager, 845.6 - Operational Support Grade
62.4 - AA & Equivalent, 843.6 - AO & Equivalent, 509.9 - EO & Equivalent
69.4 - HEO & Equivalent, 130.2 - SEO & Equivalent, 8.0 - Grade 7 & Equivalent
4.0 - Grade 6 & Equivalent



NOMS
Director of Offender Management
East of England

Total Staff in Group = 4076.9 FTE

Total salary costs = £102,959,659

Trevor Williams

Director, East of England
Director of Offender Management

£115,000 - £119,999

Deputy Director, Custodial Manager

1664.7 - Prison Officer, 311.5 - Senior Officer, 67.3 - Principal Officer
99.4 - Operational Manager, 24.0 - Operational Senior Manager, 667.5 - Operational Support Grade
81 - AA & Equivalent, 673.4 - AO & Equivalent, 286.4 - EO & Equivalent
59.5 - HEO & Equivalent, 110.3 - SEO & Equivalent, 22.2 - Grade 7 & Equivalent
7.7 - Grade 6 & Equivalent, 1.0 - Other



NOMS
Director of Offender Management
West Midlands

Total Staff in Group = 3834.9 FTE

Total salary costs = £96,283,967

Gill Mortlock

Director,
West Mids Director of Offender Management

£95,000 – £99,999

Deputy Director,
Custodial Manager

1632.5 - Prison Officer, 325.2 - Senior Officer, 80.4 - Principal Officer
85.1 - Operational Manager, 16.5 - Operational Senior Manager, 655.5 - Operational Support Grade
84.4 - AA & Equivalent, 607.0 - AO & Equivalent, 201.7 - EO & Equivalent
50.0 - HEO & Equivalent, 83.8 - SEO & Equivalent, 8.8 - Grade 7 & Equivalent
1.0 - Grade 6 & Equivalent, 1.0 - Custodial &/or Community Manager



NOMS
Director of Offender Management
Wales

Total Staff in Group = 1280.2 FTE

Total salary costs = £36,311,168

Yvonne Thomas

Director,
Wales Director of Offender Management

£110,000 – £114,999

Deputy Director, Custodial & Community Manager

394.4 - Prison Officer, 65.1 - Senior Officer, 16.5 - Principal Officer
19.5 - Operational Manager, 5.0 - Operational Senior Manager, 101.2 - Operational Support Grade
10.7 - AA & Equivalent, 90.6 - AO & Equivalent, 100.5 - EO & Equivalent
11.0 - HEO & Equivalent, 22.5 - SEO & Equivalent, 7.0 - Grade 7 & Equivalent
2.5 - Grade 6 & Equivalent



NOMS
Director of Offender Management
London

Total Staff in Group = 3555.1 FTE

Total salary costs = £105,440,966

Digby Griffith

Director,
London Director of Offender Management

£100,000 – £104,999

Deputy Director, Custodial Manager

1657.5 - Prison Officer, 314.4 - Senior Officer, 82.1 - Principal Officer
74.8 - Operational Manager, 23.0 - Operational Senior Manager, 560.2 - Operational Support Grade
86.8 - AA & Equivalent, 379.6 - AO & Equivalent, 212.9 - EO & Equivalent
51.5 - HEO & Equivalent, 89.6 - SEO & Equivalent, 18.7 - Grade 7 & Equivalent
2.0 - Grade 6 & Equivalent



NOMS
Director of Offender Management
Yorkshire and Humberside

Total Staff in Group = 3860.9 FTE

Total salary costs = £92,060,490

Steve Wagstaffe

Director,
Yorkshire & Humberside
DOM

£100,000 – £104,999

1663.6 - Prison Officer, 332.6 - Senior Officer, 75.5 - Principal Officer
92.0 - Operational Manager, 21.7 - Operational Senior Manager, 628.2 - Operational Support Grade
86.1 - AA & Equivalent, 573.5 - AO & Equivalent, 232.4 - EO & Equivalent
45.8 - HEO & Equivalent, 96.5 - SEO & Equivalent, 10.0 - Grade 7 & Equivalent
3.0 - Grade 6 & Equivalent

Key to NOMS Pay Ranges in the organograms

- Prison Officer (PO) £17,187 – 28,930;
- Senior Officer (SO) £31,169 - £31,169;
- Principal Officer (Princ Off) £31,762 - £33,537;
- Operational Manager (Op Man) £30,634 - £51,553;
- Senior Operational Manager (Senior Op Man) £51,229 - £82,892;
- Operational Support Grades (OSM) £15,455 - £18,255;
- AA & Equivalent £13,349 - £14,699;
- AO & Equivalent £ 14,762 - £20,888;
- EO & Equivalent £21,998 - £25,621;
- HEO & Equivalent £25,105 - £32,140;
- SEO & Equivalent £29,685 - £46,024;
- G7 & Equivalent £45,700 - £61,038;
- Grade 6 & Equivalent £56,920 - £82,892.