

**SFR 21/2011**

**28 September 2011**

**Coverage: England**

**Theme: Children,  
Education and Skills**

**Issued by**

Department for Education  
Sanctuary Buildings  
Great Smith Street  
London  
SW1P 3BT

**Telephone:**

**Press Office**  
020 7925 6789

**Public Enquiries**  
0870 000 2288

**Statistician**

Julie Glenndenning

**Email**

[cla.stats@education.gsi.gov.uk](mailto:cla.stats@education.gsi.gov.uk)

**Internet**

<http://www.education.gov.uk/researchandstatistics/statistics/a00196857/children-looked-after-by-local-authorities-in-engl>

## **Children looked after in England (including adoption and care leavers) year ending 31 March 2011**

This Statistical First Release (SFR) provides information about looked after children in England for the year ending 31 March 2011. It includes information on the number of looked after children, the reason why a child is looked after, their legal status and placement type. It also includes information on the number of children who started to be looked after during the year ending 31 March 2011 and the number of children who ceased to be looked after during the year.

The publication also includes information on the number of looked after children who were placed for adoption, the number adopted, the number of mothers who are looked after children and the number of unaccompanied asylum seeking children (UASC). Information on accommodation and activity of former care leavers now aged 19 is also included. All figures are based on data from the SSDA 903 return collected each spring from all local authorities. This publication is the main source of information on the numbers of looked after children in England; it is used to inform policy decisions to improve the outcomes for this vulnerable group. It is also used extensively by other organisations interested in this subject.

### **KEY POINTS**

- There were 65,520 looked after children at 31 March 2011, an increase of 2 per cent from 2010 and an increase of 9 per cent since 2007.
- 27,310 children started to be looked after during the year ending 31 March 2011. This is a decrease of 3 per cent from the previous year, but an increase of 14 per cent from 2007. Of these 27,310 children 35 per cent are classed as being taken into care.
- 3,050 looked after children were adopted during the year ending 31 March 2011, a decrease of 5 per cent from 2010 and a decrease of 8 per cent since 2007. Similarly there has been a decrease in the number of looked after children placed for adoption. This figure has fallen from 2,720 in 2007, to 2,500 in 2010 with a further fall to 2,450 in 2011.
- 26,830 children ceased to be looked after during the year ending 31 March 2011, an increase of 6 per cent from 2010 and an increase of 7 per cent from 2007.
- Overall, for those children who started to be looked after during the year the main reason why they were provided with a service is because of abuse or neglect (54 per cent). This percentage has increased each year since 2008 when 48 per cent of children were

provided with a service for this reason.

- 74 per cent of children who were looked after at 31 March 2011 were in a foster placement.

### Children looked after at 31 March 2011

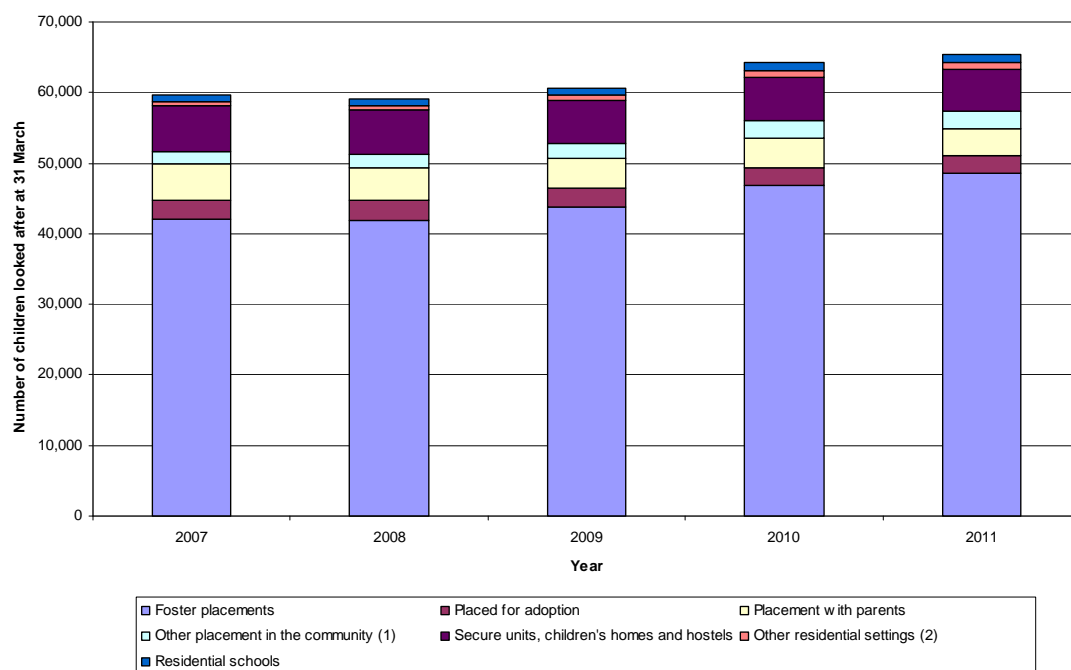
There were 65,520 looked after children at 31 March 2011, an increase of 2 per cent compared to 31 March 2010.

At 31 March 2011, 39,330 children were looked after under a care order (either an interim or full care order). This represents 60 per cent of all legal statuses of looked after children, and is an increase of 3 per cent from last year's figure of 38,280. The number of children looked after under a voluntary agreement is 20,430; this represents 31 per cent of all legal statuses and compares with 29 per cent of all legal statuses in 2007.

Of children looked after at 31 March 2011, 48,530 were cared for in a foster placement. This is an increase of 4 per cent on the previous year's figure of 46,840 and an increase of 15 per cent from 2007 (42,030). There were 7,910 looked after children cared for in residential accommodation; this includes secure units, children homes, hostels, residential schools and other residential settings. This represents a decrease of 4 per cent from 2010 and a decrease of 3 per cent from 2007.

There were 2,450 looked after children placed for adoption at 31 March 2011. This is a decrease of 2 per cent from last year and a decrease of 10 per cent from the 2007 figure (2,720). Figure 1 shows the trends in placements from 2007 to 2011.

**Figure 1: Children looked after at 31 March by placement type**



1. Includes children living independently and in residential employment
2. Includes residential care homes, NHS trusts, Family centres or young offenders' institutions.

Of all children looked after at 31 March 2011, 67 per cent (43,870) had only one placement during the year, 22 per cent had two placements during the year and 11 per cent had three or more placements. This compares with 2007 when 65 per cent of looked after children had only one placement during the year and 13 per cent had 3 or more placements. The percentage of children with 2 placements in 2007 remained unchanged.

### Children who started to be looked after during the year ending 31 March 2011

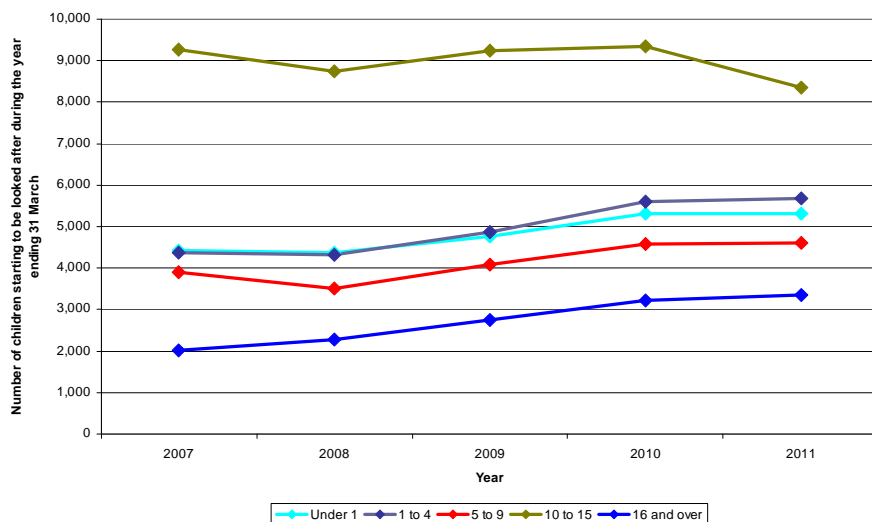
There were 27,310 children who started to be looked after during the year ending 31 March 2011, a decrease of 3 per cent from the previous year's figure of 28,090. This decrease is a reversal of the trend seen in recent years when between 2008 and 2010, the number of children that started to be looked after increased each year. However, despite this reversal, the number of children who started to be looked after in 2011 remains 14 per cent higher than during 2007.

Much of this decrease is accounted for by the drop in the number of 10 to 15 year olds who started to be looked after. In the year ending 31 March 2011, 8,350 children aged 10 to 15 started to be looked after. This represents a decrease of 11 per cent from 2010. For other age groups small increases are shown in the numbers of children who started to be looked after between 2010 and 2011:

- 5,330 children aged under 1 started to be looked after during the year ending 31 March 2011, a similar figure to that of 2010.
- 5,670 children aged between 1 and 4 started to be looked after during the same period, a small increase of 1 per cent from 2010
- 4,620 children aged between 5 and 9 started to be looked after during 2011, a small increase of 1 per cent from 2010
- 3,340 children aged 16 and over started to be looked after during 2011, an increase of 3 per cent from 2010

Figure 2 shows the numbers of children who started to be looked after, for each age group, during the year ending 31 March.

**Figure 2: Age of children on first starting to be looked after, 2007 to 2011**

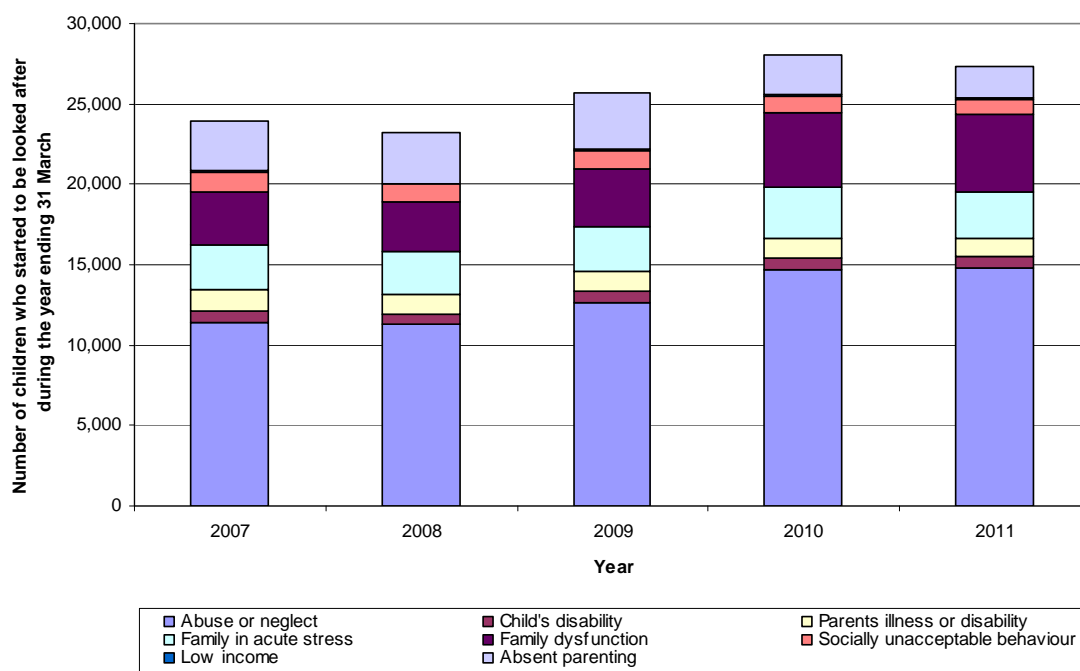


Of the children who started to be looked after during the year ending 31 March 2011, 9,480 were classified as being taken into care (see Technical Note 8). This represents 35 per cent of all children who started to be looked after during the year ending 31 March 2011. This is a decrease of 1 per cent compared with 2010 (9,580) but an increase of 23 per cent compared to 2007 (7,720).

Of all children who started to be looked after during the year ending 31 March 2011, 54 per cent were provided with a service due to abuse or neglect; an increase from 52 per cent in 2010. The second most frequent reason for a child to be provided with a service was family dysfunction; this represents 18 per cent of all children who started to be looked after during the year ending 31 March 2011.

The number of children who were provided with a service due to absent parenting has decreased from 2,480 in 2010 to 1,940 in 2011. This decrease is linked to the decrease in UASC (see page 7) who form around 62 per cent of absent parenting cases. Figure 3 shows the category of need of children who started to be looked after during the year ending 31 March.

**Figure 3: Category of need of children who started to be looked after during the year ending 31 March**



### Children who ceased to be looked after during the year ending 31 March 2011

There were 26,830 children who ceased to be looked after during the year ending 31 March 2011. This is an increase of 6 per cent from 2010. By age group:

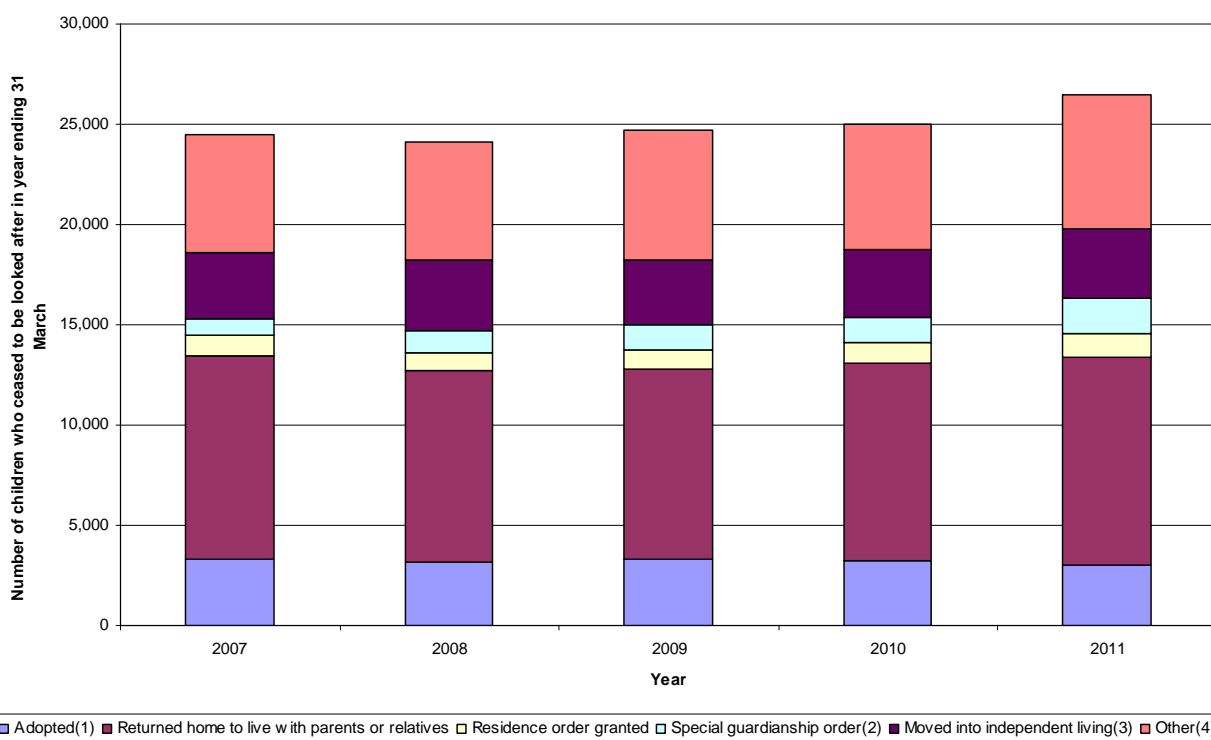
- 1,410 children aged under 1 ceased to be looked after during the year ending 31 March 2011, an increase of 11 per cent compared to 2010.
- 6,380 children aged between 1 and 4 ceased to be looked after during the same period, an increase of 7 per cent from 2010

- 3,720 children aged between 5 and 9 ceased to be looked after during 2011, an increase of 8 per cent from 2010
- 5,380 children aged between 10 and 15 ceased to be looked after during 2011, a decrease of 2 per cent from 2010
- 9,950 children aged 16 and over ceased to be looked after during 2011, an increase of 8 per cent from 2010

The figures for children aged 16 and over are consistent with a general trend for looked after children to leave care at a later age. The number of children who ceased to be looked after aged 16 and over has increased from 9,180 in 2010 to 9,950 in 2011. Of these children, 63 per cent ceased to be looked after on their 18<sup>th</sup> birthday, an increase from 57 per cent in 2007. The percentage of children ceasing to be looked after at age 16 has decreased from 26 per cent in 2007 to 19 per cent during the same period.

In 2011 the most common reason why a child ceased to be looked after is because they returned to parents or relatives (39 per cent). Figure 4 shows the reasons why a child ceased to be looked after during the year ending 31 March.

**Figure 4: Reason why a child ceased to be looked after during the year ending 31 March**



1. Includes both adoptions where the application unopposed and where consent dispensed with.
2. Includes special guardianship orders made to former foster carers and to carers other than former foster carers.
3. Includes both supportive living and living with no formalised support.
4. Includes children who died, moved to the care of another LA, who transferred to residential care or were sentenced to custody. Also includes children whose reason for ceasing care is recorded as other.

## Children looked after during the year ending 31 March 2011

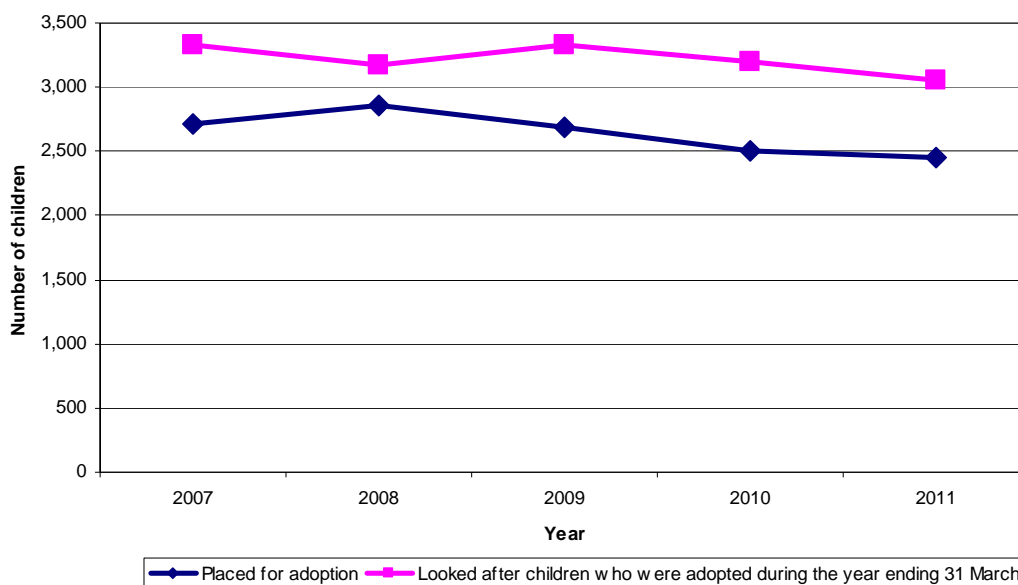
There were 90,920 children looked after at some point during the year ending 31 March 2011. This is an increase of 3 per cent from 2010 and an increase of 9 per cent from 2007. The majority of these children (60 per cent) were provided with a service due to abuse or neglect.

## Looked after children who were adopted during the year ending 31 March 2011

There were 3,050 looked after children adopted during the year ending 31 March 2011. This represents a 5 per cent decrease from the previous year's figure of 3,200 and a 8 per cent decrease from the 2007 figure of 3,330.

This decrease in the number of looked after children adopted in recent years mirrors last years decrease in the number of children placed for adoption. The number of looked after children placed for adoption decreased from 2,690 to 2,500 between 2009 and 2010 and has continued to fall in 2011. It is therefore likely that the number of looked after children adopted will continue to decrease in 2012. Figure 5 shows the number of looked after children placed for adoption and the number adopted in each year since 2007.

**Figure 5: The number of looked after children placed for adoption and the number adopted during the year ending 31 March.**



The number of looked after children who were under 1 year old at adoption has decreased over the last 5 years from 150 in 2007 to 60 in 2011. The majority of adopted children are aged between 1 and 4 years at adoption; of all looked after children adopted, 71 per cent are in this age group with the average age at adoption being 3 years and 10 months. There were 820 adoptions of children aged 5 and over, a decrease from 2010 when 880 looked after children in this age group were adopted.

The percentage of adopted children whose final period of care was 3 years or over has increased to 26 per cent in 2011 from 24 per cent in 2010. In 2011, 74 per cent of children who were adopted during the year were placed for adoption within 12 months of the decision that they should be placed for adoption. This compares with 72 per cent in 2010.

The average length of time between a child's entry into care and adoption was 2 years and 7 months. In younger children the process was shorter. For children aged less than 1 year (on first entering care) the average length of the adoption process was 2 years and 3 months while for children aged 6 (when first entering care) the average length of the process was 3 years and 9 months. Both have shown a slight rise since 2010 when the average length of the adoption process was 2 years and 2 months and 3 years and 6 months respectively.

1,740 children ceased to be looked after due to Special Guardianship Orders. Special Guardianship Orders were introduced in 2005. The number of these has increased by 35 per cent from 2010. The majority of Special Guardianship Orders are made to former foster carers, these account for 64 per cent of all Special Guardianship Orders made.

### **Unaccompanied Asylum Seeking Children (UASC)**

There were 2,680 UASC who were looked after at 31 March 2011, a decrease of 22 per cent from 2010. The proportion of looked after UASC who were male was 89 per cent in 2011, the same as in 2010. The majority of looked after UASC are aged 16 years or over; 75 per cent are in this age group in 2011, an increase from 70 per cent in 2010.

In 2011 the majority of looked after UASC came from an Other Asian background, 43 per cent of all UASC are recorded as being in this category in 2011. In 2011, only 15 per cent of UASC were of Black African origin, the same as in 2010. In 2007 most UASC came from a Black African background with 31 per cent of looked after UASC being recorded in this category..

### **Children now aged 19 years old who were looked after when aged 16 years**

The number of children now aged 19 years who were looked after when aged 16 years is 6,290.

Of these young people, 2,060 (33 per cent) are not in education, employment or training. For 270 of these young people this is due to illness or disability. This is similar to 2010.

There were 390 young people now aged 19 years who were in higher education, a decrease from the 2010 figure of 460. This represents 6 per cent of all former care leavers. In addition 1,900 young people of this cohort were in education other than higher, with a further 1,560 in training or employment. This represents 30 per cent and 25 per cent respectively of all young people now aged 19 who were looked after when aged 16. These figures are similar to 2010.

The number of children who were not in touch with the local authorities was 370 in 2011, slightly higher than the 2010 figure (350).

Most young people now aged 19 years who were looked after when aged 16 years are accommodated in independent living arrangements (41 per cent). This percentage has remained fairly stable over the last 5 years. The majority (90 per cent) are classed as being in suitable accommodation (see Technical Note 9). There were 230 young people living with their former foster carers, this represents 4 per cent of this cohort of young people.

### **Mothers aged 12 and over**

There were 350 mothers aged 12 and over who were looked after at 31 March 2011, a decrease from 390 in 2010.

Of looked after girls who were mothers, 46 per cent were aged 15 or under on the birth of their first child, 35 per cent were aged 16. The percentage of mothers looked after who are from a white

ethnic background is 70 per cent, a decrease from 72 per cent in 2010. The percentage of mothers looked after from a black ethnic background is similar to that of 2010 at 13 per cent.

The majority of mothers looked after are placed in foster care, 52 per cent in 2011 compared to 48 per cent in 2010.



## **LIST OF TABLES**

### **Children looked after at 31 March 2011**

- A1** Children looked after at 31 March by gender, age at 31 March, category of need, and ethnic origin, 2007 to 2011
- A2** Children looked after at 31 March by legal status, 2007 to 2011
- A3** Children looked after at 31 March by placement, 2007 to 2011
- A4** Unaccompanied Asylum Seeking Children looked after at 31 March by gender, age at 31 March, category of need and ethnic origin, 2007 to 2011
- A5** Mothers aged 12 years and over looked after at 31 March by age at 31 March, age at birth of first child, category of need, ethnic origin, placement and region, 2007 to 2011
- LAA1** Children looked after at 31 March, by Local Authority, 2007 to 2011

### **Children looked after during the year ending 31 March 2011**

- B1** Children looked after at any time during the year ending 31 March by gender, age at 31 March, category of need, placement and ethnic origin, 2007 to 2011
- LAB1** Children looked after at any time during the years ending 31 March and those looked after under a series of short term placements, by Local Authority, 2007 to 2011

### **Children who started to be looked after during the year ending 31 March 2011**

- C1** Children who started to be looked after during the years ending 31 March by gender, age on starting, category of need and ethnic origin, 2007 to 2011
- C2** Children who were taken into care during the years ending 31 March, by gender, age on starting, category of need and ethnicity, 2007 to 2011
- LAC1** Children who started to be looked after and the number taken into care during the years ending 31 March, by Local Authority, 2007 to 2011

### **Children who ceased to be looked after during the year ending 31 March 2011**

- D1** Children who ceased to be looked after during the years ending 31 March by gender, age on ceasing, reason episode ceased, category of need and ethnic origin, 2007 to 2011
- D2** Children aged 16 years and over who ceased to be looked after during the years ending 31 March by gender, age on ceasing, ethnic origin and final placement, 2007 to 2011
- LAD1** Children who ceased to be looked after during the years ending 31 March, by Local Authority, 2007 to 2011

### **Children looked after who were adopted during the year ending 31 March 2011**

- E1** Looked after children who were adopted during the years ending 31 March by gender, age at adoption, ethnic origin, category of need, final legal status, duration of final period of care and age on starting final period of care, 2007 to 2011
- E2** Children looked after who were adopted during the year ending 31 March by average time between the different stages of the adoption process and age at start of period of care, 2009 to 2011
- LAE1** Looked after children who were adopted during the years ending 31 March, by Local

Authority, 2007 to 2011

### **Children now aged 19 years who were looked after on 1 April then aged 16 years**

- F1** Children now aged 19 years old who were looked after when aged 16 years by gender, activity and accommodation, 2007 to 2011
- LAF1** Children now aged 19 years old who were looked after when aged 16 years by activity, by Local Authority, 2011
- LAF2** Children now aged 19 years old who were looked after when aged 16 by accommodation by Local Authority, 2011

### **Additional Information**

Further information on looked after children, including detailed Local Authority level analysis will be released on 30 November. This will be arranged into 5 themes:

- Children looked after at 31 March
- Children who started to be looked after during the year ending 31 March
- Children who ceased to be looked after during the year ending 31 March
- Children looked after who were adopted during the year ending 31 March
- Children now aged 19 years who were looked after on 1 April then aged 16

The additional information will be published on 30 November 2011. A full schedule showing which tables are included under each theme and a publication date is shown on the web site for this publication. This can be accessed at: <http://www.education.gov.uk/researchandstatistics/statistics/a00196857/children-looked-after-by-local-authorities-in-engl>

The data underlying this release will be published on the same date.

Information on outcomes for looked after children is expected to be published in December. This will include information on educational attainment, exclusions and absence from school, cautions and convictions, health and substance misuse of looked after children. It will also include information on the emotional and behavioural health of looked after children (SDQ scores), which was previously part of this publication.

## TECHNICAL NOTES

### Data Collection

1. The 2010-11 figures for looked after children are the latest in a regular series. Data are collected on the SSDA903 return, which provides the Department for Education with data on looked after children in England. It also covers adoptions of looked after children, the activity of former care leavers aged 19, and information on looked after children eligible for pupil premium.
2. All references made to "year" relate to the standard financial year which runs from 1 April to 31 March (for example 2011 should be understood as 1 April 2010 to 31 March 2011).
3. The figures presented for the year ending 31 March 2011 are based on data reported by all 152 local authorities in England, with the exception of Isles of Scilly who are not required to submit a return as they do not have any looked after children within their care.
4. The database used to collect this information is longitudinal with one record for every child. As local authorities are continually updating the database every year, previous years' figures have also been amended where there have been changes (see footnotes on historical changes in the relevant tables). The information collected contains details about the child (for example gender, date of birth, unique pupil number) and details about the child's episodes in care (for example category of need, legal status under which the child is looked after and type of placement). When a change in legal status or placement (or both) occurs, a new episode of care is started and the date and reason for the change are recorded. Information is supplied to the Department for Education annually, and these records are then linked (by a unique identifier for each child) to any supplied by the same local authority in preceding years (from 1992 onwards).
5. Between 1997-98 and 2002-03 local authorities were required to submit a CLA100 return along with the SSDA903 return. The CLA100 was an aggregate return completed for all children looked after at 31 March while the SSDA903 was a one-in-three sample survey. From year ending 31 March 2004, the SSDA903 covered all children looked after and so the CLA100 was not required. Between 1997-98 and 2002-03, the AD1 return was completed for all children looked after who were adopted during the year; the OC1 return collected data on the qualifications achieved at the point of leaving care for young people leaving care in the year aged 16 and over; and the OC3 return collected data on the activity and accommodation of former care leavers at age 19 who were looked after on 1 April aged 16 years old (in their 17th year). From year ending 31 March 2004, these returns were collected as part of the SSDA903 data collection and so are not referred to as such anymore.
6. Further information on the data items collected in this return can be found in the guidance notes. This and other documents useful for the completion of the SSDA903 return can be found on the DfE children's statistical returns website at:  
<http://www.education.gov.uk/researchandstatistics/statisticalreturns/childrenlar/>
7. Some of the information previously collected via the Outcome Indicators (OC2) return for children looked after continuously for at least 12 months at 31 March was added to the SSDA903 for the first time in 2008-09. The information collected included data on offending, health promotion checks, immunisations, dental checks, health assessments, substance misuse problem identification and intervention, and position and activity after year 11. This will form part of the Outcomes for Looked After Children Statistical First Release which will be published in December.

8. Children taken into care is defined as children who started to be looked after under a care order (full or interim), or who are detained on child protection grounds (police protection, emergency protection orders or child assessment orders).
9. Regulation 9(2) of the *Care Leavers Regulations* defines what is meant by 'Suitable accommodation'. It is accommodation, which, so far as reasonably practicable, is suitable for the child in light of his/her needs, including his/her health needs. The authority should have satisfied itself as to the character and suitability of the landlord or other provider; ensures that the accommodation complies with health and safety requirements related to rented accommodation; and that the authority has so far as reasonably practicable, taken into account the child's wishes and feelings; and education, training or employment needs. Further information can be found at: <http://media.education.gov.uk/assets/files/pdf/v/volume%203%20planning%20transition%20to%20adulthood%20for%20care%20leavers.pdf>
10. Information on the number of children who have left care but are continuing to live with former foster carers was collected for the first time in 2011. This information is published for the first time in Table F1.

## Data quality

11. The 2011 data shows that there are still children subject to freeing orders even though applications for freeing orders could not be made on or after 30 December 2005 as they were replaced by placement orders. Such high numbers of children subject to freeing orders four years after they have come to an end are not expected. Further guidance on the use of freeing orders has been included in our guidance notes.
12. This release has reported that there were 64,410 children looked after at 31 March 2010, the same figure reported in last year's publication. This release reports the number of children starting to be looked after in the year ending 31 March 2010 as 28,090. In the 2010 release this figure was published as 27,800. The number of children who ceased to be looked after in the year ending 31 March 2010 was 25,310. In 2010 this was reported as being 25,100. Some revisions to previously published data occur as a result of amendments and corrections made by Local Authorities to their historical data. Records for the years since 2005 can be amended directly by Local Authorities. Common amendments include correcting episode information and including missing records. Changes required to records prior to 2005 and corrections to dates of birth, sex or ethnicity for all historical records can only be made by DfE. An audit of 2010 records changed by Local Authorities in 2011 shows that around 1,200 child records were deleted and a further 290 were added to the system. In addition changes have also been made to the characteristics of a child's care. In addition to these changes, rounding conventions have changed in 2011. Previously numbers were rounded to the nearest 100 if they exceeded 1000 or to the nearest 10 otherwise. 13.
13. The number of looked after children at 31 March 2011 does not equate to the number at 31 March 2010 plus the number who started in the year minus those who ceased. This is due to movement of looked after children in and out of respite care. Children subject to respite care normally live at home but are accommodated by a local authority in a pattern of short periods of care in order to give their parents some "respite". They are not included in the published figures. However children frequently move between respite and non-respite care so may be excluded from one set of figures (e.g. the number starting to be looked after) but be included in another (e.g. numbers who ceased to be looked after).

14. Grossing Factors have been applied to the data in order to compensate for records with errors in their episodes. These are calculated by comparing the number of valid looked after children records reported in the return with the number of invalid records in the system. Because of the rigorous validation checks applied to data submitted, such discrepancies are usually very low and the grossing factors applied are close to 1. For example, in 2011, there were 75 invalid records and 99.925% of records were valid, which meant the grossing factor was 1.001. The table below gives the grossing factors applied to the England figures for each of the last five years and includes a summary of the LA level grossing factors. Grossing factors for each LA have been published on the website as table LAH1.

	2007	2008	2009	2010	2011
England grossing factor	1.002	1.002	1.001	1.001	1.001
No. of LAs with grossing factor >1	56	58	62	56	47
Maximum number of invalid records for an LA	15	11	9	9	5
Highest grossing factor for an LA	1.037	1.036	1.053	1.059	1.009

15. Rates per 10,000 of the population have been calculated using the appropriate mid-year estimates of the number of children in England aged under 18 years supplied by the Office for National Statistics.

16. This publication is produced using a final version of the 2011 dataset and we do not plan to make any revisions to this publication. If we later discover that a revision is necessary, this will be made in accordance with our revisions policy which is published at:

<http://www.education.gov.uk/rsgateway/nat-stats.shtml>.

### Local Authority Reorganisation

17. Bedford Borough, Central Bedfordshire, Cheshire East and Cheshire West and Chester were formed in the reorganisation of Bedfordshire and Cheshire on 1 April 2009. These local authorities supplied the Department with information indicating which local authority had taken over responsibility regarding children looked after at 31 March 2009 and children now aged 19 years who were looked after on 1 April 2007 then aged 16 years.

### Rounding Conventions

18. The National Statistics Code of Practice requires that reasonable steps should be taken to ensure that all published or disseminated statistics produced by the Department for

Education protect confidentiality. Figures have been rounded to the nearest 10, Local Authority figures have been rounded to the nearest 5. For confidentiality purposes, numbers from one to five inclusive have been replaced in the published tables by a cross (x). Where any number is shown as zero (0), the original figure submitted was zero (0). The following convention has been used:

”.” means not applicable

“-“ means negligible – used to represent a percentage below 0.5%

19. Percentages have been rounded to whole numbers but where the numerator was five or less or the denominator was 10 or less, they have been suppressed and replaced by a cross (x). Note that percentages may not sum to 100 due to rounding.
20. It has been necessary to suppress other figures whenever it would be possible to calculate the value of a suppressed number by means of simple arithmetic. The rule applied in these circumstances has been to suppress the next smallest data item provided its value is strictly less than 20.

## **Related Publications**

21. Details of statistics on looked after children published by other countries in the UK can be found below.

### ***Scotland***

Children Looked After Statistics are produced annually by the Scottish Government. The most recent data published on 24<sup>th</sup> February 2011 can be found at the following link:

<http://www.scotland.gov.uk/Publications/2011/02/22133946/0>

### ***Wales***

Statistics on Children Looked After in Wales are produced annually by the Local Government Data Unit and the Welsh Assembly Government. Data for the period up to the end of March 2010 were released on 15<sup>th</sup> September 2011 and can be found at the following link:

<http://wales.gov.uk/topics/statistics/headlines/health2011/110915/?lang=en>

### ***Northern Ireland:***

The Children Order Statistical Bulletin and Children Order Statistical Tables are produced annually by the Department of Health, Social Services and Public Safety and include information on looked after children in Northern Ireland. The most recent data published in 30<sup>th</sup> June 2011 can be found at the following link:

[http://www.dhsspsni.gov.uk/index/stats\\_research/stats-cib/statistics\\_and\\_research-cib-pub/children\\_statistics/children\\_order\\_quarterly.htm](http://www.dhsspsni.gov.uk/index/stats_research/stats-cib/statistics_and_research-cib-pub/children_statistics/children_order_quarterly.htm)

### **England:**

Information on referrals, assessments and children who were the subject of a child protection plan (taken from the 20010-11 Children in Need census) was published on 28 September and can be found at the following link:

<http://www.education.gov.uk/researchandstatistics/statistics/a00196856/dfe-referrals-assessments-and-children-who-were-th>

Further information from the Children in Need Census will be published in November.

Information on care proceedings applications made by local authorities where CAFCASS has been appointed by the court to represent the interests of children are published by CAFCASS (Children and Family Court Advisory and Support Service). The latest information covers August 2011 of 2010-11 and can be found at:

[http://www.cafcass.gov.uk/publications/care\\_demand\\_statistics.aspx](http://www.cafcass.gov.uk/publications/care_demand_statistics.aspx)

### **A National Statistics publication**

The United Kingdom Statistics Authority has designated these statistics as National Statistics, in accordance with the Statistics and Registration Service Act 2007 and signifying compliance with the Code of Practice for Official Statistics. Designation can be broadly interpreted to mean that the statistics:

- meet identified user needs;
- are well explained and readily accessible;
- are produced according to sound methods, and
- are managed impartially and objectively in the public interest.

Once statistics have been designated as National Statistics it is a statutory requirement that The Code of Practice shall continue to be observed. This publication has been designated as National Statistics following assessment by the United Kingdom Statistics Authority.

### **Looked after children data user group:**

This is a group which aims to seek feedback on whether these statistics are meeting users' requirements and to consult on any future changes to this data collection and the timing and format of our outputs. If you would like to participate in this group then please [register your interest via email](#).

## **ENQUIRIES**

Enquiries about the figures contained in this press release should be addressed to:

Data and Statistics Division  
Department for Education  
Sanctuary Buildings  
Great Smith Street  
LONDON  
SW1P 3BT  
Email: [cla.stats@education.gsi.gov.uk](mailto:cla.stats@education.gsi.gov.uk)

Press enquiries should be made to the Department's Press Office at:

Press Office  
Department for Education  
Sanctuary Buildings  
Great Smith Street  
LONDON  
SW1P 3BT  
Telephone Number: 020 7925 6789



Table A1: Children looked after at 31 March by gender, age at 31 March, category of need, and ethnic origin<sup>1,2,3</sup>

Years ending 31 March 2007 to 2011

Coverage: England

rates per 10,000 children under 18 years

	2007	2008	2009	2010	2011					
						numbers and percentages				
	numbers					percentages				
	2007	2008	2009	2010	2011	2007	2008	2009	2010	2011
<b>All children looked after at 31 March</b>	<b>59,970</b>	<b>59,360</b>	<b>60,890</b>	<b>64,410</b>	<b>65,520</b>					
<b>Rates per 10,000 children under 18 years<sup>4</sup></b>	<b>55</b>	<b>54</b>	<b>55</b>	<b>58</b>	<b>59</b>					
<b>All children looked after at 31 March</b>	<b>59,970</b>	<b>59,360</b>	<b>60,890</b>	<b>64,410</b>	<b>65,520</b>	<b>100</b>	<b>100</b>	<b>100</b>	<b>100</b>	<b>100</b>
<b>Gender</b>	<b>59,970</b>	<b>59,360</b>	<b>60,890</b>	<b>64,410</b>	<b>65,520</b>	<b>100</b>	<b>100</b>	<b>100</b>	<b>100</b>	<b>100</b>
Male	33,390	33,380	34,580	36,150	36,470	56	56	57	56	56
Female	26,580	25,990	26,310	28,260	29,050	44	44	43	44	44
<b>Age at 31 March (years)</b>	<b>59,970</b>	<b>59,360</b>	<b>60,890</b>	<b>64,410</b>	<b>65,520</b>	<b>100</b>	<b>100</b>	<b>100</b>	<b>100</b>	<b>100</b>
Under 1	2,990	2,900	3,260	3,720	3,660	5	5	5	6	6
1 to 4	8,740	9,020	9,440	10,840	12,020	15	15	16	17	18
5 to 9	10,930	10,380	10,470	11,200	11,830	18	17	17	17	18
10 to 15	25,500	24,900	24,890	24,930	24,160	43	42	41	39	37
16 and over	11,810	12,160	12,820	13,710	13,860	20	20	21	21	21
<b>Category of need<sup>5</sup></b>	<b>59,970</b>	<b>59,360</b>	<b>60,890</b>	<b>64,410</b>	<b>65,520</b>	<b>100</b>	<b>100</b>	<b>100</b>	<b>100</b>	<b>100</b>
Abuse or neglect	37,270	36,750	37,160	39,290	40,410	62	62	61	61	62
Child's disability	2,330	2,290	2,210	2,180	2,150	4	4	4	3	3
Parents illness or disability	2,970	2,750	2,700	2,820	2,720	5	5	4	4	4
Family in acute stress	4,730	4,910	5,320	5,800	5,880	8	8	9	9	9
Family dysfunction	6,320	6,330	6,840	8,020	8,930	11	11	11	12	14
Socially unacceptable behaviour	1,270	1,170	1,220	1,290	1,230	2	2	2	2	2
Low income	110	130	140	170	160	-	-	-	-	-
Absent parenting	4,970	5,040	5,310	4,830	4,050	8	8	9	7	6
<b>Ethnic origin</b>	<b>59,970</b>	<b>59,360</b>	<b>60,890</b>	<b>64,410</b>	<b>65,520</b>	<b>100</b>	<b>100</b>	<b>100</b>	<b>100</b>	<b>100</b>
<b>White</b>	<b>46,410</b>	<b>45,580</b>	<b>46,200</b>	<b>48,990</b>	<b>50,340</b>	<b>77</b>	<b>77</b>	<b>76</b>	<b>76</b>	<b>77</b>
White British	44,590	43,810	44,510	47,170	48,480	74	74	73	73	74
White Irish	410	420	390	390	370	1	1	1	1	1
Traveller of Irish Heritage <sup>6</sup>	.	.	20	30	30	.	.	-	-	-
Gypsy/Roma <sup>6</sup>	.	.	30	50	80	.	.	-	-	-
Any other White background	1,410	1,360	1,250	1,350	1,390	2	2	2	2	2
<b>Mixed</b>	<b>5,310</b>	<b>5,220</b>	<b>5,260</b>	<b>5,590</b>	<b>5,620</b>	<b>9</b>	<b>9</b>	<b>9</b>	<b>9</b>	<b>9</b>
White and Black Caribbean	2,130	2,100	2,080	2,190	2,150	4	4	3	3	3
White and Black African	490	490	490	530	600	1	1	1	1	1
White and Asian	850	820	810	910	950	1	1	1	1	1
Any other mixed background	1,840	1,810	1,870	1,960	1,920	3	3	3	3	3
<b>Asian or Asian British</b>	<b>2,330</b>	<b>2,780</b>	<b>3,190</b>	<b>3,380</b>	<b>3,090</b>	<b>4</b>	<b>5</b>	<b>5</b>	<b>5</b>	<b>5</b>
Indian	300	300	300	320	300	-	1	-	-	-
Pakistani	640	660	670	740	770	1	1	1	1	1
Bangladeshi	270	310	350	410	420	-	1	1	1	1
Any other Asian background	1,120	1,510	1,880	1,920	1,610	2	3	3	3	2
<b>Black or Black British</b>	<b>4,720</b>	<b>4,450</b>	<b>4,400</b>	<b>4,570</b>	<b>4,520</b>	<b>8</b>	<b>7</b>	<b>7</b>	<b>7</b>	<b>7</b>
Caribbean	1,640	1,600	1,570	1,660	1,640	3	3	3	3	2
African	2,320	2,150	2,090	2,110	2,050	4	4	3	3	3
Any other Black background	750	710	740	800	840	1	1	1	1	1
<b>Other ethnic groups</b>	<b>1,190</b>	<b>1,330</b>	<b>1,690</b>	<b>1,700</b>	<b>1,530</b>	<b>2</b>	<b>2</b>	<b>3</b>	<b>3</b>	<b>2</b>
Chinese	120	130	140	130	110	-	-	-	-	-
Any other ethnic group	1,070	1,200	1,550	1,570	1,420	2	2	3	2	2
<b>Other</b>	.	.	.	<b>180</b>	<b>410</b>	.	.	.	.	<b>1</b>
Refused <sup>6</sup>	.	.	.	10	30	.	.	.	.	-
Information not yet available <sup>6</sup>	.	.	.	170	390	.	.	.	.	1

Source: SSSA 903

- Numbers have been rounded to the nearest 10. Percentages have been rounded to the nearest whole number. See Technical Notes for more information on rounding.
- Figures exclude children looked after under an agreed series of short term placements.
- Historical data may differ from older publications. This is mainly due to the implementation of amendments and corrections sent by some local authorities after the publication date of previous materials.
- The rates per 10,000 children under 18 years have been derived using the mid-year population estimates for 2010 provided by the Office for National Statistics.
- The most applicable category of the eight "Need Codes" at the time the child started to be looked after rather than necessarily the entire reason they are looked after.
- Ethnic origin classification collected for the first time in 2009.

. Not applicable.  
- Negligible. Percentage below 0.5%

**Table A2: Children looked after at 31 March by legal status<sup>1,2,3</sup>**  
**Years ending 31 March 2007 to 2011**  
**Coverage: England**

Legal Status at 31 March	numbers and percentages									
	numbers					percentages				
	2007	2008	2009	2010	2011	2007	2008	2009	2010	2011
<b>All children looked after at 31 March</b>	<b>59,970</b>	<b>59,360</b>	<b>60,890</b>	<b>64,410</b>	<b>65,520</b>	<b>100</b>	<b>100</b>	<b>100</b>	<b>100</b>	<b>100</b>
<b>Care Orders</b>	<b>38,550</b>	<b>36,910</b>	<b>36,310</b>	<b>38,280</b>	<b>39,330</b>	<b>64</b>	<b>62</b>	<b>60</b>	<b>59</b>	<b>60</b>
Interim care orders	9,160	8,670	9,360	12,240	13,660	15	15	15	19	21
Full care orders	29,390	28,240	26,950	26,040	25,670	49	48	44	40	39
<b>Freed for adoption<sup>4</sup></b>	<b>910</b>	<b>580</b>	<b>400</b>	<b>300</b>	<b>250</b>	<b>2</b>	<b>1</b>	<b>1</b>	<b>-</b>	<b>-</b>
<b>Placement Order granted<sup>5</sup></b>	<b>3,060</b>	<b>4,400</b>	<b>4,620</b>	<b>4,860</b>	<b>5,290</b>	<b>5</b>	<b>7</b>	<b>8</b>	<b>8</b>	<b>8</b>
<b>Voluntary agreements under S20 CA 1989 (single placements)</b>	<b>17,200</b>	<b>17,280</b>	<b>19,310</b>	<b>20,710</b>	<b>20,430</b>	<b>29</b>	<b>29</b>	<b>32</b>	<b>32</b>	<b>31</b>
<b>Detained for child protection</b>	<b>40</b>	<b>30</b>	<b>70</b>	<b>70</b>	<b>40</b>	<b>-</b>	<b>-</b>	<b>-</b>	<b>-</b>	<b>-</b>
Police protection	10	20	30	40	30	-	-	-	-	-
Emergency protection orders	20	10	40	40	10	-	-	-	-	-
Under Child Assessment Order	0	0	0	x	0	0	0	0	x	0
<b>Youth Justice legal statuses</b>	<b>200</b>	<b>180</b>	<b>180</b>	<b>180</b>	<b>170</b>	<b>-</b>	<b>-</b>	<b>-</b>	<b>-</b>	<b>-</b>
On remand or committed for trial	180	170	170	170	160	-	-	-	-	-
Detained under PACE <sup>6</sup>	0	0	0	0	x	0	0	0	0	x
Supervision order	20	10	10	10	10	-	-	-	-	-

Source: SSDA903

1. Numbers have been rounded to the nearest 10. Percentages have been rounded to the nearest whole number. See Technical Notes for more information on rounding.
  2. Figures exclude children looked after under an agreed series of short term placements.
  3. Historical data may differ from older publications. This is mainly due to the implementation of amendments and corrections sent by some local authorities after the publication date of previous materials.
  4. No new applications for freeing orders may be made on or after 30 December 2005.
  5. Placement orders came into force on 30 December 2005.
  6. Children detained in local authority accommodation under section 38(6) of the Police and Criminal Evidence Act 1984.
- x Figures not shown in order to protect confidentiality. See Technical Notes for information on data suppression.  
- Negligible. Percentage below 0.5%

**Table A3: Children looked after at 31 March by placement<sup>1,2,3</sup>**  
**Years ending 31 March 2007 to 2011**  
**Coverage: England**

Placement at 31 March	numbers and percentages									
	numbers					percentages				
	2007	2008	2009	2010	2011	2007	2008	2009	2010	2011
<b>All children looked after at 31 March</b>	<b>59,970</b>	<b>59,360</b>	<b>60,890</b>	<b>64,410</b>	<b>65,520</b>	<b>100</b>	<b>100</b>	<b>100</b>	<b>100</b>	<b>100</b>
<b>Foster placements</b>	<b>42,030</b>	<b>41,930</b>	<b>43,870</b>	<b>46,840</b>	<b>48,530</b>	<b>70</b>	<b>71</b>	<b>72</b>	<b>73</b>	<b>74</b>
Foster placement inside Council boundary										
With relative or friend	5,100	4,990	4,930	5,280	5,350	9	8	8	8	8
With other foster carer provided by Council	19,920	19,580	19,910	20,540	21,370	33	33	33	32	33
arranged through agency <sup>4</sup>	2,370	2,740	3,330	4,030	4,460	4	5	5	6	7
Foster placement outside Council boundary										
With relative or friend	1,910	1,890	1,940	2,070	2,080	3	3	3	3	3
With other foster carer provided by Council	5,300	5,220	5,780	6,010	6,060	9	9	9	9	9
arranged through agency <sup>4</sup>	7,440	7,520	7,990	8,910	9,210	12	13	13	14	14
<b>Placed for adoption</b>	<b>2,720</b>	<b>2,860</b>	<b>2,690</b>	<b>2,500</b>	<b>2,450</b>	<b>5</b>	<b>5</b>	<b>4</b>	<b>4</b>	<b>4</b>
Placed for adoption with consent with current foster carer (under S19 AA 2002)	130	110	60	40	30	-	-	-	-	-
Placed for adoption with placement order with current foster carer (under S21 AA 2002)	170	190	190	230	180	-	-	-	-	-
Placed for adoption with consent not with current foster carer (under S19 AA 2002)	750	600	290	190	170	1	1	-	-	-
Placed for adoption with placement order not with current foster carer (under S21 AA 2002)	1,680	1,960	2,150	2,050	2,070	3	3	4	3	3
<b>Placement with parents</b>	<b>5,110</b>	<b>4,580</b>	<b>4,170</b>	<b>4,230</b>	<b>3,970</b>	<b>9</b>	<b>8</b>	<b>7</b>	<b>7</b>	<b>6</b>
<b>Other placement in the community</b>	<b>1,720</b>	<b>1,910</b>	<b>2,060</b>	<b>2,430</b>	<b>2,460</b>	<b>3</b>	<b>3</b>	<b>3</b>	<b>4</b>	<b>4</b>
Living independently	1,720	1,910	2,060	2,420	2,460	3	3	3	4	4
Residential employment	x	x	x	10	x	x	x	x	-	x
<b>Secure units, children's homes and hostels</b>	<b>6,460</b>	<b>6,220</b>	<b>6,090</b>	<b>6,170</b>	<b>5,890</b>	<b>11</b>	<b>10</b>	<b>10</b>	<b>10</b>	<b>9</b>
Secure unit inside Council boundary	30	20	20	20	20	-	-	-	-	-
Secure unit outside Council boundary <sup>5</sup>	170	160	190	180	140	-	-	-	-	-
Homes and hostels subject to Children's Homes regulations										
inside Council boundary	2,890	2,900	2,730	2,630	2,610	5	5	4	4	4
outside Council boundary	2,290	2,120	2,150	2,340	2,230	4	4	4	4	3
Homes and hostels <i>not</i> subject to Children's Homes regulations	1,090	1,020	1,000	1,000	880	2	2	2	2	1
<b>Other residential settings</b>	<b>590</b>	<b>570</b>	<b>740</b>	<b>1,000</b>	<b>1,050</b>	<b>1</b>	<b>1</b>	<b>1</b>	<b>2</b>	<b>2</b>
Residential care homes	230	250	360	550	640	-	-	1	1	1
NHS Trust providing medical/nursing care	70	80	90	110	110	-	-	-	-	-
Family centre or mother and baby unit	140	100	150	200	170	-	-	-	-	-
Young offenders institution or prison	150	140	150	140	130	-	-	-	-	-
<b>Residential schools</b>	<b>1,090</b>	<b>1,080</b>	<b>1,040</b>	<b>1,030</b>	<b>970</b>	<b>2</b>	<b>2</b>	<b>2</b>	<b>2</b>	<b>1</b>
<b>Missing - Absent for more than 24 hours from agreed placement</b>	<b>150</b>	<b>130</b>	<b>120</b>	<b>110</b>	<b>110</b>	<b>-</b>	<b>-</b>	<b>-</b>	<b>-</b>	<b>-</b>
In refuge (section 51 of Children Act, 1989)	x	x	x	x	x	x	x	x	x	x
Whereabouts known (not in refuge)	30	40	30	30	30	-	-	-	-	-
Whereabouts unknown	120	100	90	80	80	-	-	-	-	-
<b>Other placement</b>	<b>90</b>	<b>70</b>	<b>100</b>	<b>90</b>	<b>90</b>	<b>-</b>	<b>-</b>	<b>-</b>	<b>-</b>	<b>-</b>
<b>Number of placements during the year<sup>6</sup></b>	<b>59,970</b>	<b>59,360</b>	<b>60,890</b>	<b>64,410</b>	<b>65,520</b>	<b>100</b>	<b>100</b>	<b>100</b>	<b>100</b>	<b>100</b>
1	38,980	38,710	40,400	42,230	43,870	65	65	66	66	67
2	13,390	13,620	13,720	14,870	14,650	22	23	23	23	22
3 or more	7,590	7,030	6,770	7,300	7,000	13	12	11	11	11

Source: SSDA903

- Numbers have been rounded to the nearest 10. Percentages have been rounded to the nearest whole number. See Technical Notes for more information on rounding.
- Figures exclude children looked after under an agreed series of short term placements.
- Historical data may differ from older publications. This is mainly due to the implementation of amendments and corrections sent by some local authorities after the publication date of previous materials.
- This category includes placement provider codes "Other Local Authority provision", "private provision" and "voluntary/third sector provision" for 2009, 2010 and 2011.
- There are currently only 16 secure units operating in England therefore most placements will inevitably be outside the council boundary.
- Where a child is subsequently placed for adoption with their existing foster carers, then this is not counted as a placement change.

x Figures not shown in order to protect confidentiality. See Technical Notes for information on data suppression.  
 - Negligible. Percentage below 0.5%

**Table A4: Unaccompanied Asylum Seeking Children looked after at 31 March by gender, age at 31 March, category of need and ethnic origin<sup>1,2,3</sup>**  
**Years ending 31 March 2007 to 2011**  
**Coverage: England**

	numbers and percentages									
	numbers					percentages				
	2007	2008	2009	2010	2011	2007	2008	2009	2010	2011
<b>Unaccompanied Asylum Seeking Children looked after at 31 March</b>	<b>3,380</b>	<b>3,520</b>	<b>3,880</b>	<b>3,440</b>	<b>2,680</b>	<b>100</b>	<b>100</b>	<b>100</b>	<b>100</b>	<b>100</b>
<b>Gender</b>	<b>3,380</b>	<b>3,520</b>	<b>3,880</b>	<b>3,440</b>	<b>2,680</b>	<b>100</b>	<b>100</b>	<b>100</b>	<b>100</b>	<b>100</b>
Male	2,550	2,840	3,360	3,060	2,370	76	81	87	89	89
Female	830	680	520	380	310	24	19	13	11	11
<b>Age at 31 March (years)</b>	<b>3,380</b>	<b>3,520</b>	<b>3,880</b>	<b>3,440</b>	<b>2,680</b>	<b>100</b>	<b>100</b>	<b>100</b>	<b>100</b>	<b>100</b>
Under 16	1,150	1,180	1,330	1,040	670	34	34	34	30	25
16 and over	2,230	2,340	2,550	2,400	2,000	66	66	66	70	75
<b>Category of need<sup>4</sup></b>	<b>3,380</b>	<b>3,520</b>	<b>3,880</b>	<b>3,440</b>	<b>2,680</b>	<b>100</b>	<b>100</b>	<b>100</b>	<b>100</b>	<b>100</b>
Abuse or neglect	70	60	60	70	70	2	2	1	2	3
Child's disability	x	x	x	x	x	x	x	x	x	x
Parents illness or disability	x	x	x	x	x	x	x	x	x	x
Family in acute stress	10	20	60	90	70	-	1	2	3	3
Family dysfunction	20	20	20	30	20	-	-	1	1	1
Socially unacceptable behaviour	x	10	10	10	10	x	-	-	-	-
Low income	10	10	20	10	10	-	-	-	-	-
Absent parenting	3,260	3,400	3,710	3,230	2,490	97	96	96	94	93
<b>Ethnic origin</b>	<b>3,380</b>	<b>3,520</b>	<b>3,880</b>	<b>3,440</b>	<b>2,680</b>	<b>100</b>	<b>100</b>	<b>100</b>	<b>100</b>	<b>100</b>
<b>White</b>	<b>450</b>	<b>350</b>	<b>220</b>	<b>110</b>	<b>80</b>	<b>13</b>	<b>10</b>	<b>6</b>	<b>3</b>	<b>3</b>
White British	10	10	10	10	10	-	-	-	-	-
White Irish	0	0	0	0	0	0	0	0	0	0
Traveller of Irish Heritage <sup>5</sup>	.	.	0	0	0	.	.	0	0	0
Gypsy/Roma <sup>5</sup>	.	.	0	0	0	.	.	0	0	0
Any other White background	440	340	210	100	80	13	10	5	3	3
<b>Mixed</b>	<b>30</b>	<b>20</b>	<b>20</b>	<b>20</b>	<b>10</b>	<b>1</b>	<b>1</b>	<b>1</b>	<b>-</b>	<b>-</b>
White and Black Caribbean	x	0	0	0	x	x	0	0	0	x
White and Black African	10	10	10	10	x	-	-	-	-	x
White and Asian	10	10	x	x	0	-	-	x	x	0
Any other mixed background	10	10	10	10	10	-	-	-	-	-
<b>Asian or Asian British</b>	<b>970</b>	<b>1,320</b>	<b>1,660</b>	<b>1,640</b>	<b>1,260</b>	<b>29</b>	<b>38</b>	<b>43</b>	<b>48</b>	<b>47</b>
Indian	20	30	30	30	30	1	1	1	1	1
Pakistani	90	80	80	70	50	3	2	2	2	2
Bangladeshi	20	30	30	40	40	1	1	1	1	1
Any other Asian background	840	1,190	1,510	1,500	1,140	25	34	39	44	43
<b>Black or Black British</b>	<b>1,150</b>	<b>950</b>	<b>760</b>	<b>570</b>	<b>450</b>	<b>34</b>	<b>27</b>	<b>20</b>	<b>17</b>	<b>17</b>
Caribbean	10	10	x	x	x	-	-	x	x	x
African	1,050	880	690	500	400	31	25	18	15	15
Any other Black background	90	70	70	70	60	3	2	2	2	2
<b>Other Ethnic groups</b>	<b>770</b>	<b>870</b>	<b>1,190</b>	<b>1,080</b>	<b>850</b>	<b>23</b>	<b>25</b>	<b>31</b>	<b>31</b>	<b>32</b>
Chinese	80	90	90	60	20	2	3	2	2	1
Any other ethnic group	690	780	1,100	1,030	830	21	22	28	30	31
<b>Other</b>	<b>.</b>	<b>.</b>	<b>30</b>	<b>30</b>	<b>20</b>	<b>.</b>	<b>.</b>	<b>1</b>	<b>1</b>	<b>1</b>
Refused <sup>6</sup>	.	.	x	x	x	.	.	x	x	x
Information not yet available <sup>5</sup>	.	.	30	20	20	.	.	1	1	1

Source: SSDA 903

1. Numbers have been rounded to the nearest 10. Percentages have been rounded to the nearest whole number. See Technical Notes for more information on rounding.
2. Figures exclude children looked after under an agreed series of short term placements.
3. Historical data may differ from older publications. This is mainly due to the implementation of amendments and corrections sent by some local authorities after the publication date of previous materials.
4. The most applicable category of the eight "Need Codes" at the time the child started to be looked after rather than necessarily the entire reason they are looked after.
5. Ethnic origin classification collected for the first time in 2009.

- x Figures not shown in order to protect confidentiality. See Technical Notes for information on data suppression.  
 . Not applicable.  
 - Negligible. Percentage below 0.5%

**Table A5: Mothers aged 12 years old and over looked after at 31 March by age at 31 March, age at birth of first child category of need, ethnic origin, placement and region<sup>2,3</sup>**  
**Years ending 31 March 2007 to 2011**  
**Coverage: England**

	numbers and percentages									
	numbers					percentages				
	2007	2008	2009	2010	2011	2007	2008	2009	2010	2011
<b>All females looked after at 31 March</b>	<b>26,580</b>	<b>25,990</b>	<b>26,310</b>	<b>28,260</b>	<b>29,050</b>					
<b>All females aged 12 years old and over looked after at 31 March</b>	<b>13,310</b>	<b>12,940</b>	<b>13,010</b>	<b>13,680</b>	<b>13,680</b>	<b>100</b>	<b>100</b>	<b>100</b>	<b>100</b>	<b>100</b>
<b>All mothers aged 12 years old and over looked after at 31 March</b>	<b>360</b>	<b>320</b>	<b>350</b>	<b>390</b>	<b>350</b>	<b>100</b>	<b>100</b>	<b>100</b>	<b>100</b>	<b>100</b>
<b>Age at 31 March (years)</b>	<b>360</b>	<b>320</b>	<b>350</b>	<b>390</b>	<b>350</b>	<b>100</b>	<b>100</b>	<b>100</b>	<b>100</b>	<b>100</b>
12 to 14	10	10	20	10	20	3	2	4	3	5
15	40	40	30	40	40	12	11	8	11	10
16	110	90	100	110	100	30	28	29	28	28
17	200	190	200	220	200	55	59	58	57	57
18 and over	0	0	x	0	0	0	0	x	0	0
<b>Age at birth of first child (years)</b>	<b>360</b>	<b>320</b>	<b>350</b>	<b>390</b>	<b>350</b>	<b>100</b>	<b>100</b>	<b>100</b>	<b>100</b>	<b>100</b>
12 to 14	50	40	40	60	70	14	14	12	14	19
15	100	90	90	120	100	26	28	27	30	27
16	110	120	130	140	120	30	39	37	35	35
17	60	60	80	80	70	16	19	24	20	19
18 and over	0	0	0	0	0	0	0	0	0	0
Birth date not reported	50	0	x	x	x	13	0	x	x	x
<b>Category of need<sup>4</sup></b>	<b>360</b>	<b>320</b>	<b>350</b>	<b>390</b>	<b>350</b>	<b>100</b>	<b>100</b>	<b>100</b>	<b>100</b>	<b>100</b>
Abuse or neglect	180	170	180	200	160	51	53	52	50	45
Child's disability	x	x	0	0	x	x	x	0	0	x
Parents illness or disability	10	10	20	20	10	2	4	5	4	3
Family in acute stress	30	30	30	40	50	8	9	8	11	14
Family dysfunction	70	60	60	80	90	18	18	19	20	24
Socially unacceptable behaviour	10	10	10	20	20	3	3	2	5	5
Low income	x	x	0	x	x	x	x	0	x	x
Absent parenting	60	40	50	40	30	17	12	14	11	9
<b>Ethnic origin</b>	<b>360</b>	<b>320</b>	<b>350</b>	<b>390</b>	<b>350</b>	<b>100</b>	<b>100</b>	<b>100</b>	<b>100</b>	<b>100</b>
White	220	190	230	280	250	62	60	66	72	70
Mixed	30	30	30	40	30	9	11	8	9	9
Asian or Asian British	10	10	10	10	10	2	3	2	4	4
Black or Black British	90	70	70	50	50	25	23	20	14	13
Other Ethnic groups	10	10	10	10	10	2	3	3	2	3
Other <sup>5</sup>	.	.	0	0	0	.	.	0	0	0
<b>Placement</b>	<b>360</b>	<b>320</b>	<b>350</b>	<b>390</b>	<b>350</b>	<b>100</b>	<b>100</b>	<b>100</b>	<b>100</b>	<b>100</b>
Foster placements	140	140	170	190	180	39	45	49	48	52
Placed for adoption	0	0	0	0	0	0	0	0	0	0
Placed with parents	20	30	20	20	10	5	9	6	4	3
Placed in the community	120	80	100	100	90	33	26	28	26	25
Secure units, children's homes and hostels	60	50	40	60	50	16	16	12	15	14
Other residential settings	20	10	10	20	20	6	2	4	4	5
Residential schools	0	0	0	x	x	0	0	0	x	x
Missing - Absent for more than 24 hours from agreed placement	10	x	x	x	0	1	x	x	x	0
Other placement	x	x	x	x	0	x	x	x	x	0
<b>Region</b>	<b>360</b>	<b>320</b>	<b>350</b>	<b>390</b>	<b>350</b>	<b>100</b>	<b>100</b>	<b>100</b>	<b>100</b>	<b>100</b>
North East	10	20	20	30	20	3	5	5	7	5
North West	40	40	40	50	40	12	13	13	12	11
Yorkshire and The Humber	40	40	40	40	40	12	12	12	10	10
East Midlands	30	20	20	30	30	7	8	6	6	7
West Midlands	30	30	30	40	40	8	8	7	9	10
East of England	30	20	30	30	40	7	6	8	7	10
Inner London	80	60	70	70	50	21	19	20	17	14
Outer London	50	50	40	50	50	15	15	11	13	13
South East	40	30	50	50	40	10	9	14	12	11
South West	20	20	20	30	30	6	5	4	6	9

Source: SSSA903

- Numbers have been rounded to the nearest 10. Percentages have been rounded to the nearest whole number. See Technical Notes for more information on rounding.
  - Figures exclude children looked after under an agreed series of short term placements.
  - Historical data may differ from older publications. This is mainly due to the implementation of amendments and corrections sent by some local authorities after the publication date of previous materials.
  - The most applicable category of the eight "Need Codes" at the time the child started to be looked after rather than necessarily the entire reason they are looked after.
  - Information refused or not available was collected for the first time in 2009.
- x Figures not shown in order to protect confidentiality. See Technical Notes for information on data suppression.  
. Not applicable.

**Table B1: Children looked after at any time during the year ending 31 March by gender, age at 31 March, category of need, placement and ethnic origin**  
**Years ending 31 March 2007 to 2011**  
**Coverage: England**

numbers

All children looked after during the year ending 31 March					
	2007	2008	2009	2010	2011
<b>All children looked after during the year</b>	<b>83,460</b>	<b>82,520</b>	<b>84,320</b>	<b>88,190</b>	<b>90,920</b>
<b>Gender</b>	<b>83,460</b>	<b>82,520</b>	<b>84,320</b>	<b>88,190</b>	<b>90,920</b>
Male	46,150	45,820	47,440	49,160	50,120
Female	37,310	36,700	36,870	39,030	40,800
<b>Age (years)<sup>4</sup></b>	<b>83,460</b>	<b>82,520</b>	<b>84,320</b>	<b>88,190</b>	<b>90,920</b>
Under 1	4,250	4,150	4,460	4,890	4,970
1 to 4	13,910	14,340	15,130	16,550	18,170
5 to 9	14,340	13,480	13,600	14,460	15,370
10 to 15	31,070	30,030	29,670	29,580	28,820
16 and over	19,890	20,520	21,460	22,710	23,590
<b>Category of need<sup>5,6</sup></b>	<b>83,460</b>	<b>82,520</b>	<b>84,320</b>	<b>88,190</b>	<b>90,920</b>
Abuse or neglect	48,730	48,370	49,110	51,520	53,760
Child's disability	3,090	2,980	2,950	2,910	2,890
Parents illness or disability	4,440	4,070	3,900	3,900	3,900
Family in acute stress	7,090	7,260	7,560	8,330	8,540
Family dysfunction	9,260	9,290	9,860	11,330	12,650
Socially unacceptable behaviour	2,490	2,270	2,190	2,200	2,160
Low income	180	170	200	240	270
Absent parenting	8,180	8,100	8,540	7,760	6,740
<b>Placement<sup>6</sup></b>	<b>83,460</b>	<b>82,520</b>	<b>84,320</b>	<b>88,190</b>	<b>90,920</b>
Foster placements	53,720	53,620	55,740	59,340	61,780
Placed for adoption	6,060	6,020	6,020	5,700	5,470
Placed with parents	7,630	6,990	6,350	6,150	6,250
Placed in the community	3,590	3,840	4,260	4,800	5,330
Secure units, children's homes and hostels	9,760	9,400	9,130	9,080	8,840
Other residential settings	890	890	1,080	1,410	1,560
Residential schools	1,340	1,290	1,290	1,270	1,210
Missing - Absent for more than 24 hours from agreed placement	320	320	280	250	280
Other placement	170	150	180	190	190
<b>Ethnic origin</b>	<b>83,460</b>	<b>82,520</b>	<b>84,320</b>	<b>88,190</b>	<b>90,920</b>
<b>White</b>	<b>63,310</b>	<b>62,010</b>	<b>62,240</b>	<b>65,310</b>	<b>68,030</b>
White British	60,410	59,300	59,600	62,550	65,200
White Irish	580	540	530	510	490
Traveller of Irish Heritage <sup>7</sup>	.	.	30	50	50
Gypsy/Roma <sup>7</sup>	.	.	40	90	110
Any other White background	2,320	2,170	2,040	2,100	2,190
<b>Mixed</b>	<b>7,040</b>	<b>7,080</b>	<b>7,150</b>	<b>7,500</b>	<b>7,710</b>
White and Black Caribbean	2,710	2,730	2,720	2,860	2,900
White and Black African	650	670	700	760	830
White and Asian	1,120	1,100	1,130	1,170	1,260
Any other mixed background	2,550	2,580	2,590	2,710	2,720
<b>Asian or Asian British</b>	<b>3,610</b>	<b>4,150</b>	<b>4,950</b>	<b>5,150</b>	<b>4,840</b>
Indian	440	460	470	480	470
Pakistani	940	960	1,060	1,150	1,140
Bangladeshi	440	480	540	650	650
Any other Asian background	1,790	2,250	2,870	2,870	2,590
<b>Black or Black British</b>	<b>7,370</b>	<b>7,030</b>	<b>6,910</b>	<b>6,990</b>	<b>7,060</b>
Caribbean	2,270	2,240	2,230	2,320	2,310
African	3,890	3,610	3,540	3,460	3,480
Any other Black background	1,210	1,180	1,140	1,210	1,270
<b>Other ethnic groups</b>	<b>2,140</b>	<b>2,240</b>	<b>2,800</b>	<b>2,840</b>	<b>2,620</b>
Chinese	280	260	260	250	210
Any other ethnic group	1,860	1,980	2,540	2,590	2,410
<b>Other</b>	<b>.</b>	<b>.</b>	<b>280</b>	<b>410</b>	<b>650</b>
Refused <sup>7</sup>	.	.	20	30	50
Information not yet available <sup>7</sup>	.	.	250	380	610

Source: SSDA 903

- Numbers have been rounded to the nearest 10. See Technical Notes for more information on rounding.
- Historical data may differ from older publications. This is mainly due to the implementation of amendments and corrections sent by some local authorities of date of previous materials.
- Excludes children looked after exclusively under one or more agreed series of short term placements at any time during the years ending 31 March.
- Age at the end of the latest episode of care, or at 31 March if child is still looked after.
- The most applicable category of the eight "Need Codes" at the time the child started to be looked after rather than necessarily the entire reason they are looked after.
- Placement and category of need relate to child's latest episode of care during the year.
- Ethnic origin classification collected for the first time in 2009.

x Figures not shown in order to protect confidentiality. See Technical Notes for information on data suppression.  
 . Not applicable.

**Table C1: Children who started to be looked after during the years ending 31 March by gender, age on starting, category of need and ethnic origin<sup>1,2,3,4</sup>**  
**Years ending 31 March 2007 to 2011**  
**Coverage: England**

	numbers and percentages									
	numbers					percentages				
	2007	2008	2009	2010	2011	2007	2008	2009	2010	2011
<b>All children who started to be looked after</b>	<b>23,960</b>	<b>23,250</b>	<b>25,700</b>	<b>28,090</b>	<b>27,310</b>	<b>100</b>	<b>100</b>	<b>100</b>	<b>100</b>	<b>100</b>
<b>Gender</b>	<b>23,960</b>	<b>23,250</b>	<b>25,700</b>	<b>28,090</b>	<b>27,310</b>	<b>100</b>	<b>100</b>	<b>100</b>	<b>100</b>	<b>100</b>
Male	13,210	12,800	14,460	15,000	14,390	55	55	56	53	53
Female	10,760	10,460	11,240	13,090	12,920	45	45	44	47	47
<b>Age on starting</b>	<b>23,960</b>	<b>23,250</b>	<b>25,700</b>	<b>28,090</b>	<b>27,310</b>	<b>100</b>	<b>100</b>	<b>100</b>	<b>100</b>	<b>100</b>
Under 1	4,430	4,370	4,770	5,320	5,330	18	19	19	19	19
1 to 4	4,360	4,320	4,870	5,610	5,670	18	19	19	20	21
5 to 9	3,910	3,520	4,080	4,570	4,620	16	15	16	16	17
10 to 15	9,250	8,750	9,230	9,350	8,350	39	38	36	33	31
16 and over	2,010	2,290	2,750	3,230	3,340	8	10	11	12	12
<b>Category of need<sup>5</sup></b>	<b>23,960</b>	<b>23,250</b>	<b>25,700</b>	<b>28,090</b>	<b>27,310</b>	<b>100</b>	<b>100</b>	<b>100</b>	<b>100</b>	<b>100</b>
Abuse or neglect	11,400	11,260	12,680	14,660	14,790	48	48	49	52	54
Child's disability	740	690	690	720	730	3	3	3	3	3
Parents illness or disability	1,290	1,150	1,180	1,250	1,100	5	5	5	4	4
Family in acute stress	2,780	2,670	2,780	3,160	2,890	12	11	11	11	11
Family dysfunction	3,330	3,140	3,660	4,660	4,820	14	13	14	17	18
Socially unacceptable behaviour	1,220	1,100	1,080	1,040	940	5	5	4	4	3
Low income	80	60	70	110	110	-	-	-	-	-
Absent parenting	3,130	3,180	3,540	2,480	1,940	13	14	14	9	7
<b>Ethnic origin</b>	<b>23,960</b>	<b>23,250</b>	<b>25,700</b>	<b>28,090</b>	<b>27,310</b>	<b>100</b>	<b>100</b>	<b>100</b>	<b>100</b>	<b>100</b>
<b>White</b>	<b>17,000</b>	<b>16,170</b>	<b>17,250</b>	<b>19,690</b>	<b>19,630</b>	<b>71</b>	<b>70</b>	<b>67</b>	<b>70</b>	<b>72</b>
White British	16,070	15,270	16,360	18,600	18,590	67	66	64	66	68
White Irish	140	130	130	130	110	1	1	-	-	-
Traveller of Irish Heritage <sup>6</sup>	.	.	20	30	20	.	.	-	-	-
Gypsy/Roma <sup>6</sup>	.	.	30	60	50	.	.	-	-	-
Any other White background	800	770	710	870	860	3	3	3	3	3
<b>Mixed</b>	<b>1,870</b>	<b>1,820</b>	<b>1,990</b>	<b>2,300</b>	<b>2,200</b>	<b>8</b>	<b>8</b>	<b>8</b>	<b>8</b>	<b>8</b>
White and Black Caribbean	640	610	650	790	740	3	3	3	3	3
White and Black African	200	190	220	280	300	1	1	1	1	1
White and Asian	320	260	320	370	370	1	1	1	1	1
Any other mixed background	720	750	800	860	780	3	3	3	3	3
<b>Asian or Asian British</b>	<b>1,520</b>	<b>1,840</b>	<b>2,190</b>	<b>1,980</b>	<b>1,500</b>	<b>6</b>	<b>8</b>	<b>9</b>	<b>7</b>	<b>6</b>
Indian	140	170	170	180	150	1	1	1	1	1
Pakistani	340	320	410	490	410	1	1	2	2	2
Bangladeshi	170	210	240	310	250	1	1	1	1	1
Any other Asian background	870	1,140	1,380	1,000	690	4	5	5	4	3
<b>Black or Black British</b>	<b>2,530</b>	<b>2,360</b>	<b>2,530</b>	<b>2,650</b>	<b>2,560</b>	<b>11</b>	<b>10</b>	<b>10</b>	<b>9</b>	<b>9</b>
Caribbean	640	620	660	780	680	3	3	3	3	2
African	1,480	1,300	1,430	1,390	1,390	6	6	6	5	5
Any other Black background	410	430	440	490	480	2	2	2	2	2
<b>Other ethnic groups</b>	<b>1,030</b>	<b>1,060</b>	<b>1,480</b>	<b>1,170</b>	<b>940</b>	<b>4</b>	<b>5</b>	<b>6</b>	<b>4</b>	<b>3</b>
Chinese	170	140	130	110	80	1	1	1	-	-
Any other ethnic group	870	920	1,350	1,060	860	4	4	5	4	3
<b>Other</b>	.	.	<b>260</b>	<b>290</b>	<b>490</b>	.	.	<b>1</b>	<b>1</b>	<b>2</b>
Refused <sup>6</sup>	.	.	20	20	30	.	.	-	-	-
Information not yet available <sup>6</sup>	.	.	240	280	450	.	.	1	1	2

Source: SSDA 903

- Numbers have been rounded to the nearest 10. Percentages have been rounded to the nearest whole number. See Technical Notes for more information on rounding.
  - Only the first occasion on which a child started to be looked after in the year has been counted.
  - Historical data may differ from older publications. This is mainly due to the implementation of amendments and corrections sent by some local authorities after the publication date of previous materials.
  - Figures exclude children looked after under an agreed series of short term placements.
  - The most applicable category of the eight "Need Codes" at the time the child started to be looked after rather than necessarily the entire reason they are looked after.
  - Ethnic origin classification collected for the first time in 2009.
- . Not applicable.  
- Negligible. Percentage below 0.5%

**Table C2: Children who were taken into care during the years ending 31 March by gender, age on starting, category of need and ethnic origin<sup>1,2,3,4</sup>**  
**Years ending 31 March 2007 to 2011**  
**Coverage: England**

	numbers and percentages									
	numbers					percentages				
	2007	2008	2009	2010	2011	2007	2008	2009	2010	2011
<b>All children who were taken into care</b>	<b>7,720</b>	<b>7,440</b>	<b>8,180</b>	<b>9,580</b>	<b>9,480</b>	<b>100</b>	<b>100</b>	<b>100</b>	<b>100</b>	<b>100</b>
<b>Gender</b>	<b>7,720</b>	<b>7,440</b>	<b>8,180</b>	<b>9,580</b>	<b>9,480</b>	<b>100</b>	<b>100</b>	<b>100</b>	<b>100</b>	<b>100</b>
Male	3,860	3,720	4,140	4,730	4,700	50	50	51	49	50
Female	3,860	3,720	4,040	4,860	4,780	50	50	49	51	50
<b>Age on starting (years)</b>	<b>7,720</b>	<b>7,440</b>	<b>8,180</b>	<b>9,580</b>	<b>9,480</b>	<b>100</b>	<b>100</b>	<b>100</b>	<b>100</b>	<b>100</b>
Under 1	2,130	2,060	2,210	2,560	2,510	28	28	27	27	26
1 to 4	2,150	2,160	2,310	2,780	2,780	28	29	28	29	29
5 to 9	1,840	1,630	1,900	2,170	2,220	24	22	23	23	23
10 to 15	1,540	1,520	1,680	1,980	1,870	20	20	20	21	20
16 and over	60	70	80	100	110	1	1	1	1	1
<b>Category of need<sup>5</sup></b>	<b>7,720</b>	<b>7,440</b>	<b>8,180</b>	<b>9,580</b>	<b>9,480</b>	<b>100</b>	<b>100</b>	<b>100</b>	<b>100</b>	<b>100</b>
Abuse or neglect	5,740	5,500	6,040	6,890	6,800	74	74	74	72	72
Child's disability	70	50	60	70	90	1	1	1	1	1
Parents illness or disability	290	270	300	340	340	4	4	4	4	4
Family in acute stress	500	480	560	710	630	6	6	7	7	7
Family dysfunction	860	880	970	1,300	1,350	11	12	12	14	14
Socially unacceptable behaviour	80	90	90	110	110	1	1	1	1	1
Low income	20	10	20	20	20	-	-	-	-	-
Absent parenting	160	160	130	150	150	2	2	2	2	2
<b>Ethnic origin</b>	<b>7,720</b>	<b>7,440</b>	<b>8,180</b>	<b>9,580</b>	<b>9,480</b>	<b>100</b>	<b>100</b>	<b>100</b>	<b>100</b>	<b>100</b>
<b>White</b>	<b>5,800</b>	<b>5,610</b>	<b>5,890</b>	<b>6,950</b>	<b>6,830</b>	<b>75</b>	<b>75</b>	<b>72</b>	<b>73</b>	<b>72</b>
White British	5,510	5,320	5,590	6,520	6,360	71	71	68	68	67
White Irish	60	70	40	50	30	1	1	-	1	-
Traveller of Irish Heritage <sup>6</sup>	.	.	10	20	10	.	.	-	-	-
Gypsy/Roma <sup>6</sup>	.	.	10	40	40	.	.	-	-	-
Any other White background	230	230	240	330	390	3	3	3	3	4
<b>Mixed</b>	<b>760</b>	<b>670</b>	<b>780</b>	<b>920</b>	<b>880</b>	<b>10</b>	<b>9</b>	<b>9</b>	<b>10</b>	<b>9</b>
White and Black Caribbean	260	230	230	320	310	3	3	3	3	3
White and Black African	80	70	90	110	120	1	1	1	1	1
White and Asian	130	100	150	150	140	2	1	2	2	1
Any other mixed background	300	280	300	350	320	4	4	4	4	3
<b>Asian or Asian British</b>	<b>320</b>	<b>360</b>	<b>450</b>	<b>540</b>	<b>470</b>	<b>4</b>	<b>5</b>	<b>5</b>	<b>6</b>	<b>5</b>
Indian	40	50	60	70	60	1	1	1	1	1
Pakistani	140	120	170	210	180	2	2	2	2	2
Bangladeshi	80	80	120	160	110	1	1	1	2	1
Any other Asian background	60	110	100	110	110	1	1	1	1	1
<b>Black or Black British</b>	<b>700</b>	<b>650</b>	<b>830</b>	<b>860</b>	<b>900</b>	<b>9</b>	<b>9</b>	<b>10</b>	<b>9</b>	<b>9</b>
Caribbean	220	210	200	270	240	3	3	2	3	2
African	340	310	490	440	490	4	4	6	5	5
Any other Black background	140	130	130	150	170	2	2	2	2	2
<b>Other ethnic groups</b>	<b>130</b>	<b>140</b>	<b>140</b>	<b>200</b>	<b>190</b>	<b>2</b>	<b>2</b>	<b>2</b>	<b>2</b>	<b>2</b>
Chinese	20	10	20	30	10	-	-	-	-	-
Any other ethnic group	110	130	130	180	180	1	2	2	2	2
<b>Other</b>	.	.	<b>90</b>	<b>110</b>	<b>200</b>	.	.	<b>1</b>	<b>1</b>	<b>2</b>
Refused <sup>6</sup>	.	.	10	10	10	.	.	-	-	-
Information not yet available <sup>6</sup>	.	.	80	100	190	.	.	1	1	2

Source: SSDA 903

- Numbers have been rounded to the nearest 10. Percentages have been rounded to the nearest whole number. See Technical Notes for more information on rounding.
  - Children who were taken into care are children who started to be looked after under a care order, police protection, emergency protection order or child assessment order.
  - Historical data may differ from older publications. This is mainly due to the implementation of amendments and corrections sent by some local authorities after the publication date of previous materials.
  - Only the first occasion on which a child was taken into care in the year has been counted.
  - It is the most applicable category of the eight "Need Codes" at the time the child started to be looked after rather than necessarily the entire reason they are looked after.
  - Ethnic origin classification collected for the first time in 2009.
- . Not applicable.  
- Negligible. Percentage below 0.5%



**Table D1: Children who ceased to be looked after during the years ending 31 March by gender, age on ceasing, reason episode ceased, category of need and ethnic origin<sup>1,2,3,4</sup>**  
**Years ending 31 March 2007 to 2011**  
**Coverage: England**

	numbers and percentages									
	numbers					percentages				
	2007	2008	2009	2010	2011	2007	2008	2009	2010	2011
<b>All looked after children who ceased to be looked after</b>	<b>24,990</b>	<b>24,500</b>	<b>25,030</b>	<b>25,310</b>	<b>26,830</b>	<b>100</b>	<b>100</b>	<b>100</b>	<b>100</b>	<b>100</b>
<b>Gender</b>	<b>24,990</b>	<b>24,500</b>	<b>25,030</b>	<b>25,310</b>	<b>26,830</b>	<b>100</b>	<b>100</b>	<b>100</b>	<b>100</b>	<b>100</b>
Male	13,560	13,140	13,700	13,790	14,390	54	54	55	54	54
Female	11,430	11,350	11,330	11,520	12,450	46	46	45	46	46
<b>Age on ceasing (years)</b>	<b>24,990</b>	<b>24,500</b>	<b>25,030</b>	<b>25,310</b>	<b>26,830</b>	<b>100</b>	<b>100</b>	<b>100</b>	<b>100</b>	<b>100</b>
Under 1	1,340	1,340	1,340	1,280	1,410	5	5	5	5	5
1 to 4	5,370	5,510	5,950	5,930	6,380	21	23	24	23	24
5 to 9	3,610	3,240	3,330	3,460	3,720	14	13	13	14	14
10 to 15	6,510	5,940	5,640	5,460	5,380	26	24	23	22	20
16 and over	8,170	8,460	8,760	9,180	9,950	33	35	35	36	37
<b>Reason episode ceased</b>	<b>24,990</b>	<b>24,500</b>	<b>25,030</b>	<b>25,310</b>	<b>26,830</b>	<b>100</b>	<b>100</b>	<b>100</b>	<b>100</b>	<b>100</b>
Adopted - application unopposed	1,710	1,700	1,780	1,680	1,680	7	7	7	7	6
Adopted - consent dispensed with	1,610	1,460	1,540	1,520	1,360	6	6	6	6	5
Died	70	50	50	50	50	-	-	-	-	-
Care taken by another LA	240	190	170	170	190	1	1	1	1	1
Returned home to live with parents or relatives	10,160	9,540	9,500	9,870	10,350	41	39	38	39	39
Residence order granted	1,030	910	930	1,010	1,180	4	4	4	4	4
Special guardianship order made to former foster carers	500	770	810	860	1,120	2	3	3	3	4
Special guardianship order made to carers other than former foster carers	260	360	430	430	620	1	1	2	2	2
Moved into independent living (with supportive accommodation)	2,420	2,460	2,180	2,300	2,410	10	10	9	9	9
Moved into independent living (with no formalised support)	940	1,030	1,040	1,050	1,060	4	4	4	4	4
Transferred to residential care funded by adult social services	500	480	530	480	470	2	2	2	2	2
Sentenced to custody <sup>5</sup>	250	360	350	320	390	1	1	1	1	1
Care ceased for any other reason	5,310	5,190	5,720	5,580	5,950	21	21	23	22	22
<b>Category of need<sup>6</sup></b>	<b>24,990</b>	<b>24,500</b>	<b>25,030</b>	<b>25,310</b>	<b>26,830</b>	<b>100</b>	<b>100</b>	<b>100</b>	<b>100</b>	<b>100</b>
Abuse or neglect	12,010	12,150	12,680	12,870	13,980	48	50	51	51	52
Child's disability	800	710	760	760	780	3	3	3	3	3
Parents illness or disability	1,560	1,390	1,270	1,140	1,250	6	6	5	4	5
Family in acute stress	2,640	2,640	2,520	2,800	2,870	11	11	10	11	11
Family dysfunction	3,270	3,220	3,350	3,650	4,070	13	13	13	14	15
Socially unacceptable behaviour	1,340	1,210	1,090	1,020	1,040	5	5	4	4	4
Low income	80	50	70	80	120	-	-	-	-	-
Absent parenting	3,280	3,130	3,290	2,990	2,740	13	13	13	12	10
<b>Ethnic origin</b>	<b>24,990</b>	<b>24,500</b>	<b>25,030</b>	<b>25,310</b>	<b>26,830</b>	<b>100</b>	<b>100</b>	<b>100</b>	<b>100</b>	<b>100</b>
<b>White</b>	<b>18,100</b>	<b>17,490</b>	<b>17,270</b>	<b>17,480</b>	<b>18,760</b>	<b>72</b>	<b>71</b>	<b>69</b>	<b>69</b>	<b>70</b>
White British	16,980	16,510	16,260	16,480	17,730	68	67	65	65	66
White Irish	180	130	150	130	130	1	1	1	1	-
Traveller of Irish Heritage <sup>7</sup>	.	.	10	20	20	.	.	-	-	-
Gypsy/Roma <sup>7</sup>	.	.	10	50	30	.	.	-	-	-
Any other White background	930	850	830	800	840	4	3	3	3	3
<b>Mixed</b>	<b>1,860</b>	<b>1,980</b>	<b>2,010</b>	<b>2,030</b>	<b>2,210</b>	<b>7</b>	<b>8</b>	<b>8</b>	<b>8</b>	<b>8</b>
White and Black Caribbean	630	670	690	710	800	3	3	3	3	3
White and Black African	180	190	230	240	240	1	1	1	1	1
White and Asian	290	300	340	280	340	1	1	1	1	1
Any other mixed background	760	820	750	790	830	3	3	3	3	3
<b>Asian or Asian British</b>	<b>1,310</b>	<b>1,410</b>	<b>1,820</b>	<b>1,830</b>	<b>1,800</b>	<b>5</b>	<b>6</b>	<b>7</b>	<b>7</b>	<b>7</b>
Indian	140	160	180	170	170	1	1	1	1	1
Pakistani	310	310	410	430	390	1	1	2	2	1
Bangladeshi	170	180	210	250	250	1	1	1	1	1
Any other Asian background	690	760	1,020	970	990	3	3	4	4	4
<b>Black or Black British</b>	<b>2,750</b>	<b>2,690</b>	<b>2,670</b>	<b>2,560</b>	<b>2,690</b>	<b>11</b>	<b>11</b>	<b>11</b>	<b>10</b>	<b>10</b>
Caribbean	670	710	720	720	730	3	3	3	3	3
African	1,610	1,500	1,520	1,410	1,490	6	6	6	6	6
Any other Black background	470	480	430	430	460	2	2	2	2	2
<b>Other Ethnic groups</b>	<b>970</b>	<b>930</b>	<b>1,130</b>	<b>1,170</b>	<b>1,120</b>	<b>4</b>	<b>4</b>	<b>5</b>	<b>5</b>	<b>4</b>
Chinese	160	130	120	120	110	1	1	-	-	-
Any other ethnic group	810	800	1,010	1,050	1,010	3	3	4	4	4
<b>Other</b>	<b>.</b>	<b>.</b>	<b>130</b>	<b>240</b>	<b>250</b>	<b>.</b>	<b>.</b>	<b>1</b>	<b>1</b>	<b>1</b>
Refused <sup>7</sup>	.	.	10	10	20	.	.	-	-	-
Information not yet available <sup>7</sup>	.	.	120	220	230	.	.	-	1	1

Source: SSDA 903

- Numbers have been rounded to the nearest 10. Percentages have been rounded to the nearest whole number. See Technical Notes for more information on rounding.
  - Only the last occasion on which a child ceased to be looked after in the year has been counted.
  - Figures exclude children looked after under an agreed series of short term placements.
  - Historical data may differ from older publications. This is mainly due to the implementation of amendments and corrections sent by some local authorities after the publication date of previous materials.
  - 'Sentenced to custody' was first collected in 2007.
  - The most applicable category of the eight "Need Codes" at the time the child started to be looked after rather than necessarily the entire reason they are looked after.
  - Ethnic origin classification collected for the first time in 2009.
- . Not applicable.  
- Negligible. Percentage below 0.5%

**Table D2: Children aged 16 years and over who ceased to be looked after during the years ending 31 March by gender, age on ceasing, ethnic origin and final placement<sup>1,2,3,4</sup>**  
**Years ending 31 March 2007 to 2011**  
**Coverage: England**

	numbers and percentages									
	numbers					percentages				
	2007	2008	2009	2010	2011	2007	2008	2009	2010	2011
<b>All Children aged 16 years and over who ceased to be looked after</b>	<b>8,170</b>	<b>8,460</b>	<b>8,760</b>	<b>9,180</b>	<b>9,950</b>	<b>100</b>	<b>100</b>	<b>100</b>	<b>100</b>	<b>100</b>
<b>Gender</b>	<b>8,170</b>	<b>8,460</b>	<b>8,760</b>	<b>9,180</b>	<b>9,950</b>	<b>100</b>	<b>100</b>	<b>100</b>	<b>100</b>	<b>100</b>
Male	4,720	4,850	5,310	5,570	5,840	58	57	61	61	59
Female	3,450	3,610	3,460	3,610	4,110	42	43	39	39	41
<b>Age on ceasing (years)</b>	<b>8,170</b>	<b>8,460</b>	<b>8,760</b>	<b>9,180</b>	<b>9,950</b>	<b>100</b>	<b>100</b>	<b>100</b>	<b>100</b>	<b>100</b>
16	2,120	2,040	1,890	1,910	1,900	26	24	22	21	19
17	1,340	1,320	1,500	1,530	1,750	16	16	17	17	18
18th birthday	4,670	5,030	5,320	5,680	6,260	57	59	61	62	63
Older than 18th birthday	40	60	60	60	40	1	1	1	1	-
<b>Ethnic origin</b>	<b>8,170</b>	<b>8,460</b>	<b>8,760</b>	<b>9,180</b>	<b>9,950</b>	<b>100</b>	<b>100</b>	<b>100</b>	<b>100</b>	<b>100</b>
<b>White</b>	<b>5,370</b>	<b>5,600</b>	<b>5,450</b>	<b>5,840</b>	<b>6,510</b>	<b>66</b>	<b>66</b>	<b>62</b>	<b>64</b>	<b>65</b>
White British	4,900	5,200	5,060	5,510	6,180	60	61	58	60	62
White Irish	50	40	50	60	70	1	-	1	1	1
Traveller of Irish heritage <sup>b</sup>	.	.	x	x	x	.	.	x	x	x
Gypsy/Roma <sup>5</sup>	.	.	0	x	10	.	.	0	x	-
Any other White background	420	360	340	270	250	5	4	4	3	3
<b>Mixed</b>	<b>450</b>	<b>490</b>	<b>500</b>	<b>520</b>	<b>620</b>	<b>5</b>	<b>6</b>	<b>6</b>	<b>6</b>	<b>6</b>
White and Black Caribbean	150	200	200	210	280	2	2	2	2	3
White and Black African	40	40	40	40	50	-	-	-	-	-
White and Asian	50	70	80	70	90	1	1	1	1	1
Any other mixed background	200	180	180	190	200	2	2	2	2	2
<b>Asian or Asian British</b>	<b>580</b>	<b>660</b>	<b>930</b>	<b>970</b>	<b>1,060</b>	<b>7</b>	<b>8</b>	<b>11</b>	<b>11</b>	<b>11</b>
Indian	50	70	60	50	60	1	1	1	1	1
Pakistani	90	80	120	130	130	1	1	1	1	1
Bangladeshi	30	30	60	70	80	-	-	1	1	1
Any other Asian background	420	480	700	720	790	5	6	8	8	8
<b>Black or Black British</b>	<b>1,190</b>	<b>1,130</b>	<b>1,080</b>	<b>980</b>	<b>1,000</b>	<b>15</b>	<b>13</b>	<b>12</b>	<b>11</b>	<b>10</b>
Caribbean	200	210	220	250	260	2	3	3	3	3
African	830	760	730	610	570	10	9	8	7	6
Any other Black background	170	150	130	130	170	2	2	1	1	2
<b>Other Ethnic groups</b>	<b>580</b>	<b>580</b>	<b>770</b>	<b>820</b>	<b>720</b>	<b>7</b>	<b>7</b>	<b>9</b>	<b>9</b>	<b>7</b>
Chinese	120	100	90	80	60	1	1	1	1	1
Any other ethnic group	460	480	680	740	660	6	6	8	8	7
<b>Other</b>	.	.	<b>30</b>	<b>40</b>	<b>40</b>	.	.	.	.	.
Refused <sup>b</sup>	.	.	0	x	x	.	.	0	x	x
Information not yet available <sup>b</sup>	.	.	30	40	40	.	.	-	-	-
<b>Final placement</b>	<b>8,170</b>	<b>8,460</b>	<b>8,760</b>	<b>9,180</b>	<b>9,950</b>	<b>100</b>	<b>100</b>	<b>100</b>	<b>100</b>	<b>100</b>
Foster placements	3,110	3,290	3,270	3,590	3,720	38	39	37	39	37
Placed for adoption	10	20	10	10	x	-	-	-	-	x
Placed with parents	480	500	540	430	420	6	6	6	5	4
Other placements in the community	1,840	1,910	2,180	2,390	2,900	23	23	25	26	29
Secure units, children's homes and hostels	2,190	2,190	2,220	2,160	2,230	27	26	25	23	22
Other residential settings	180	200	200	250	310	2	2	2	3	3
Residential schools	190	170	190	210	200	2	2	2	2	2
Missing - Absent for more than 24 hours from agreed placement	110	130	100	100	120	1	1	1	1	1
Other placement	50	50	50	50	50	1	1	1	1	-

Source: SSDA 903

1. Numbers have been rounded to the nearest 10. Percentages have been rounded to the nearest whole number. See Technical Notes for more information on rounding.
2. Figures exclude children looked after under an agreed series of short term placements.
3. Historical data may differ from older publications. This is mainly due to the implementation of amendments and corrections sent by some local authorities after the publication date of previous materials.
4. Only the last occasion on which a child ceased to be looked after in the year has been counted.
5. Ethnic origin classification collected for the first time in 2009

x Figures not shown in order to protect confidentiality. See Technical Notes for information on data suppression.  
 . Not applicable.  
 - Negligible. Percentage below 0.5%

**Table E1: Looked after children who were adopted during the years ending 31 March by gender, age at adoption, ethnic origin, category of need, final legal status, duration of final period of care and age on starting final period of care<sup>1,2</sup>**

**Years ending 31 March 2007 to 2011**

**Coverage: England**

	numbers and percentages									
	numbers					percentages				
	2007	2008	2009	2010	2011	2007	2008	2009	2010	2011
<b>All looked after children</b>	<b>59,970</b>	<b>59,360</b>	<b>60,890</b>	<b>64,410</b>	<b>65,520</b>					
<b>All looked after children who were adopted during the year ending 31 March</b>	<b>3,330</b>	<b>3,180</b>	<b>3,330</b>	<b>3,200</b>	<b>3,050</b>	<b>100</b>	<b>100</b>	<b>100</b>	<b>100</b>	<b>100</b>
<b>Gender</b>	<b>3,330</b>	<b>3,180</b>	<b>3,330</b>	<b>3,200</b>	<b>3,050</b>	<b>100</b>	<b>100</b>	<b>100</b>	<b>100</b>	<b>100</b>
Male	1,670	1,640	1,680	1,640	1,560	50	52	51	51	51
Female	1,660	1,540	1,640	1,560	1,500	50	48	49	49	49
<b>Age at adoption (years)</b>	<b>3,330</b>	<b>3,180</b>	<b>3,330</b>	<b>3,200</b>	<b>3,050</b>	<b>100</b>	<b>100</b>	<b>100</b>	<b>100</b>	<b>100</b>
Under 1	150	110	80	70	60	4	4	3	2	2
1 to 4	2,130	2,230	2,380	2,250	2,170	64	70	72	70	71
5 to 9	880	690	770	780	730	26	22	23	24	24
10 to 15	150	120	80	100	90	5	4	2	3	3
16 and over	10	20	10	10	x	-	1	-	-	x
Average age (yrs : months)	4:2	3:11	3:9	3:11	3:10					
<b>Ethnic origin</b>	<b>3,330</b>	<b>3,180</b>	<b>3,330</b>	<b>3,200</b>	<b>3,050</b>	<b>100</b>	<b>100</b>	<b>100</b>	<b>100</b>	<b>100</b>
White	2,820	2,640	2,730	2,670	2,570	85	83	82	84	84
Mixed	340	330	410	350	320	10	11	12	11	10
Asian or Asian British	60	60	70	50	60	2	2	2	2	2
Black or Black British	90	110	100	90	80	3	4	3	3	2
Other ethnic groups	30	30	20	20	20	1	1	1	1	1
Other <sup>3</sup>	.	.	x	10	20	.	.	x	-	-
<b>Category of need<sup>4</sup></b>	<b>3,330</b>	<b>3,180</b>	<b>3,330</b>	<b>3,200</b>	<b>3,050</b>	<b>100</b>	<b>100</b>	<b>100</b>	<b>100</b>	<b>100</b>
Abuse or neglect	2,470	2,330	2,410	2,250	2,190	74	73	72	70	72
Child's disability	20	20	20	20	10	1	1	1	1	-
Parents illness or disability	160	160	130	120	130	5	5	4	4	4
Family in acute stress	170	220	260	280	240	5	7	8	9	8
Family dysfunction	310	300	360	370	360	9	9	11	12	12
Socially unacceptable behaviour	10	x	10	10	10	-	x	-	-	-
Low income	10	10	x	x	x	-	-	x	x	x
Absent parenting	190	140	140	140	110	6	4	4	4	3
<b>Final legal status</b>	<b>3,330</b>	<b>3,180</b>	<b>3,330</b>	<b>3,200</b>	<b>3,050</b>	<b>100</b>	<b>100</b>	<b>100</b>	<b>100</b>	<b>100</b>
Freed for adoption <sup>5</sup>	1,250	290	100	30	10	37	9	3	1	-
Placement Order <sup>6</sup>	650	1,990	2,670	2,640	2,530	19	63	80	82	83
Care order	1,200	680	340	350	330	36	21	10	11	11
Voluntary agreement (S20)	240	220	210	180	180	7	7	6	6	6
<b>Duration of final period of care<sup>7</sup></b>	<b>3,330</b>	<b>3,180</b>	<b>3,330</b>	<b>3,200</b>	<b>3,050</b>	<b>100</b>	<b>100</b>	<b>100</b>	<b>100</b>	<b>100</b>
Under 1 year	180	130	100	80	70	5	4	3	2	2
1 year to under 2 years	1,210	1,220	1,240	1,160	1,090	36	38	37	36	36
2 years to under 3 years	980	1,070	1,180	1,180	1,090	29	34	35	37	36
3 years and over	960	750	800	780	800	29	24	24	24	26
Average duration (yrs : mths)	2:8	2:7	2:6	2:7	2:7					
<b>Age on starting final period of care (years)<sup>7</sup></b>	<b>3,330</b>	<b>3,180</b>	<b>3,330</b>	<b>3,200</b>	<b>3,050</b>	<b>100</b>	<b>100</b>	<b>100</b>	<b>100</b>	<b>100</b>
Under 1	1,930	1,950	2,070	1,970	1,910	58	61	62	62	62
1	370	380	400	360	360	11	12	12	11	12
2	360	300	330	300	280	11	9	10	9	9
3	260	200	230	240	220	8	6	7	8	7
4 and over	420	350	300	330	290	13	11	9	10	10
Average age (yrs : mths)	1:6	1:4	1:3	1:4	1:3					

Source: SSDA 903

- Numbers have been rounded to the nearest 10. Percentages have been rounded to the nearest whole number. See Technical Notes for more information on rounding.
- Historical data may differ from older publications. This is mainly due to the implementation of amendments and corrections sent by some local authorities after the publication date of previous materials.
- "Other" comprises of information refused or not yet available which were collected for the first time in 2009.
- The most applicable category of the eight "Need Codes" at the time the child started to be looked after rather than necessarily the entire reason they are looked after.
- No new applications for freeing orders may be made on or after 30 December 2005.
- Placement orders came into force on 30 December 2005.
- "Period of care" refers to a continuous period of being looked after, which may include more than one placement or legal status.

x Figures not shown in order to protect confidentiality. See Technical Notes for information on data suppression.  
 . Not applicable.  
 - Negligible. Percentage below 0.5%

**Table E2: Children looked after who were adopted during the year ending 31 March by average time between the different stages of the adoption process and age at start of period of care<sup>1</sup>**  
**Years ending 31 March 2009 to 2011**  
**Coverage: England**

years : months and numbers

Age <sup>2</sup>	Average time between entry into care and decision that child should be placed for adoption			Average time between decision that child should be placed for adoption and matching of child and adopters			Average time between date of matching and date placed for adoption			Average time between date placed for adoption and the date child adopted			Total average time between entry into care and adoption			Children adopted during the year who were placed for adoption within 12 months of an agency decision that the child should be placed for adoption <sup>3,4</sup>		
	2009	2010	2011	2009	2010	2011	2009	2010	2011	2009	2010	2011	2009	2010	2011	2009	2010	2011
<b>All ages</b>	<b>0:11</b>	<b>0:11</b>	<b>0:11</b>	<b>0:8</b>	<b>0:9</b>	<b>0:9</b>	<b>0:1</b>	<b>0:1</b>	<b>0:1</b>	<b>0:10</b>	<b>0:10</b>	<b>0:10</b>	<b>2:6</b>	<b>2:7</b>	<b>2:7</b>	<b>2,500</b>	<b>2,310</b>	<b>2,250</b>
Under 1	0:9	0:9	0:10	0:7	0:8	0:8	0:1	0:1	0:1	0:9	0:9	0:9	2:2	2:2	2:3	1,680	1,570	1,570
1	1:0	1:1	1:0	0:9	0:10	0:10	0:1	0:1	0:1	0:11	1:0	0:10	2:10	3:1	2:9	290	230	250
2	1:1	1:1	1:3	0:10	0:11	1:0	0:2	0:1	0:1	1:0	1:0	1:1	3:1	3:1	3:5	210	180	160
3	1:1	1:1	1:1	1:0	0:11	0:11	0:1	0:1	0:1	1:2	1:2	1:1	3:3	3:3	3:3	140	150	120
4	1:2	1:0	1:1	0:11	0:11	1:2	0:2	0:1	0:1	1:1	1:2	1:1	3:5	3:2	3:5	80	80	60
5	1:2	1:2	1:1	0:10	1:0	1:3	0:1	0:1	0:1	1:1	1:2	1:2	3:3	3:6	3:7	50	50	40
6	1:2	1:2	1:1	0:11	1:0	1:2	0:2	0:1	0:2	1:3	1:2	1:4	3:6	3:6	3:9	30	30	20
7 and over	1:4	1:8	1:1	0:11	0:8	0:10	0:3	0:2	0:4	1:0	1:1	1:1	3:6	3:8	3:4	20	30	20

Source: SSDA 903

1. Historical data may differ from older publications. This is mainly due to the implementation of amendments and corrections sent by some local authorities after the publication date of previous materials.
2. Age at start of period of care.
3. Numbers have been rounded to the nearest 10. See Technical Notes for more information on rounding.
4. Number of children who were placed for adoption within 12 months (i.e. less than 365 days, inclusive of date child was placed for adoption) of the decision that they should be placed for adoption.  
 This figure excludes children who were placed within 12 months of the decision that they should be placed for adoption, but whose placement for adoption broke down before being adopted.

Table F1: Children now aged 19 years old who were looked after when aged 16 years by gender, activity and accommodation<sup>1,2,3</sup>

Years ending 31 March 2007 to 2011

Coverage: England

	numbers and percentages									
	numbers					percentages				
	2007 <sup>4</sup>	2008 <sup>5</sup>	2009 <sup>6</sup>	2010 <sup>7</sup>	2011 <sup>8</sup>	2007 <sup>4</sup>	2008 <sup>5</sup>	2009 <sup>6</sup>	2010 <sup>7</sup>	2011 <sup>8</sup>
<b>All children now aged 19 years old who were looked after on 1 April 2004 to 2008 when aged 16 years old</b>	<b>5,770</b>	<b>5,840</b>	<b>6,080</b>	<b>6,200</b>	<b>6,290</b>	<b>100</b>	<b>100</b>	<b>100</b>	<b>100</b>	<b>100</b>
Unaccompanied asylum seeking children now aged 19 years old who were looked after on 1 April 2004 to 2008 when aged 16 years old	220	270	370	180	200	4	5	6	3	3
<b>Gender</b>	<b>5,770</b>	<b>5,840</b>	<b>6,080</b>	<b>6,200</b>	<b>6,290</b>	<b>100</b>	<b>100</b>	<b>100</b>	<b>100</b>	<b>100</b>
Male	3,210	3,320	3,380	3,550	3,700	56	57	56	57	59
Female	2,570	2,520	2,700	2,660	2,590	44	43	44	43	41
<b>Activity</b>	<b>5,770</b>	<b>5,840</b>	<b>6,080</b>	<b>6,200</b>	<b>6,290</b>	<b>100</b>	<b>100</b>	<b>100</b>	<b>100</b>	<b>100</b>
<b>In higher education i.e. studies beyond A level</b>	<b>350</b>	<b>390</b>	<b>420</b>	<b>460</b>	<b>390</b>	<b>6</b>	<b>7</b>	<b>7</b>	<b>7</b>	<b>6</b>
Full time	340	370	390	430	380	6	6	6	7	6
Part time	10	20	20	20	20	-	-	-	-	-
<b>In education other than higher education</b>	<b>1,490</b>	<b>1,610</b>	<b>1,580</b>	<b>1,860</b>	<b>1,900</b>	<b>26</b>	<b>28</b>	<b>26</b>	<b>30</b>	<b>30</b>
Full time	1,310	1,430	1,390	1,620	1,680	23	24	23	26	27
Part time	180	180	190	240	230	3	3	3	4	4
<b>In training or employment</b>	<b>1,780</b>	<b>1,790</b>	<b>1,840</b>	<b>1,530</b>	<b>1,560</b>	<b>31</b>	<b>31</b>	<b>30</b>	<b>25</b>	<b>25</b>
Full time	1,310	1,280	1,290	1,020	1,030	23	22	21	16	16
Part time	470	510	540	510	530	8	9	9	8	8
<b>Not in education, training or employment owing to illness or disability</b>	<b>290</b>	<b>270</b>	<b>300</b>	<b>290</b>	<b>270</b>	<b>5</b>	<b>5</b>	<b>5</b>	<b>5</b>	<b>4</b>
<b>Not in education, training or employment owing to other reasons</b>	<b>1,410</b>	<b>1,400</b>	<b>1,610</b>	<b>1,720</b>	<b>1,790</b>	<b>24</b>	<b>24</b>	<b>26</b>	<b>28</b>	<b>29</b>
<b>Not in touch</b>	<b>450</b>	<b>380</b>	<b>340</b>	<b>350</b>	<b>370</b>	<b>8</b>	<b>6</b>	<b>6</b>	<b>6</b>	<b>6</b>
<b>Accommodation<sup>9</sup></b>	<b>5,770</b>	<b>5,840</b>	<b>6,080</b>	<b>6,200</b>	<b>6,290</b>	<b>100</b>	<b>100</b>	<b>100</b>	<b>100</b>	<b>100</b>
With parents or relatives	720	700	780	730	810	12	12	13	12	13
Community home	250	280	260	290	280	4	5	4	5	4
Semi-independent, transitional accommodation	540	550	550	620	610	9	9	9	10	10
Supported lodgings	450	520	570	640	570	8	9	9	10	9
Ordinary lodgings <sup>10</sup>	270	280	260	280	160	5	5	4	4	3
Foyers	60	90	80	80	100	1	2	1	1	2
Independent living	2,500	2,450	2,640	2,620	2,560	43	42	43	42	41
Emergency accommodation	40	40	30	30	20	1	1	-	1	-
Bed and breakfast	40	50	50	40	30	1	1	1	1	1
In custody	180	180	160	170	200	3	3	3	3	3
With former foster carers <sup>11</sup>	.	.	.	.	230	.	.	.	.	4
Other accommodation	270	340	370	350	340	5	6	6	6	5
Not in touch	450	380	340	350	370	8	6	6	6	6

Source: SSSA 903

1. Numbers have been rounded to the nearest 10. Percentages have been rounded to the nearest whole number.

See Technical Notes for more information on rounding.

2. Figures exclude children who were looked after on 1 April aged 16 (in their 17th year) under an agreed series of short term placements.

3. Historical data may differ from older publications. This is mainly due to the implementation of amendments and corrections sent by some local authorities after the publication date of previous materials.

4. Children now aged 19 years old who were looked after on 1 April 2004 then aged 16 years old (in their 17th year)

5. Children now aged 19 years old who were looked after on 1 April 2005 then aged 16 years old (in their 17th year)

6. Children now aged 19 years old who were looked after on 1 April 2006 then aged 16 years old (in their 17th year)

7. Children now aged 19 years old who were looked after on 1 April 2007 then aged 16 years old (in their 17th year)

8. Children now aged 19 years old who were looked after on 1 April 2008 then aged 16 years old (in their 17th year)

9. This includes accommodation judged both suitable and unsuitable.

10. Note that in 2011, children accommodated in "Ordinary lodgings" no longer includes those lodging with former foster carers and so the drop in the figures should be treated with caution.

11. Information on children accommodated with former foster carers was first collected in 2010-11.

. Not applicable.

- Negligible. Percentage below 0.5%