

SFR 27/2010

30 September 2010

Coverage: England

**Theme: Children,
Education and Skills**

Issued by

Department for Education
Sanctuary Buildings
Great Smith Street
London
SW1P 3BT

Telephone:

Press Office
020 7925 6789

Public Enquiries
0870 000 2288

Statistician

Natalie Corke

Email

cla.stats@education.gsi.gov.uk

Internet

<http://www.dcsf.gov.uk/rsgateway/DB/SFR/s000960/index.shtml>

Children looked after in England (including adoption and care leavers) year ending 31 March 2010

This Statistical First Release (SFR) provides information about looked after children in England for the year ending 31 March 2010. It includes information on the number of looked after children, the reason a child is looked after, their legal status and their placement type. It also includes information on the number of children who started to be looked after during the year ending 31 March 2010 and the number of children who ceased to be looked after during the year. Information on the number of looked after children who were adopted, the number of mothers who are looked after children, the number of unaccompanied asylum seeking children (UASC) and former care leavers is also included.

All figures are based on data from the SSDA 903 return collected from all local authorities.

KEY POINTS

- There were 64,400 looked after children as at 31 March 2010, an increase of 6 per cent from 2009 and an increase of 7 per cent since 2006.
- 27,800 children started to be looked after during the year ending 31 March 2010. This is an increase of 8 per cent from the year ending 31 March 2009 and 13 per cent from the year ending 31 March 2006. Of these children 9,500 are classed as being taken into care (see Technical Note 12).
- 25,100 children ceased to be looked after during the year ending 31 March 2010. This is similar to last year's figure of 25,000.
- Overall, the main reason why social care services first engaged with children who started to be looked after during the year was because of abuse or neglect (52 per cent). This percentage has increased since 2009.
- 73 per cent of children who were looked after at 31 March 2010 were in a foster placement. This is an increase from 69 per cent in 2006. There were 2,300 children placed for adoption at 31 March 2010.
- There were 3,400 Unaccompanied Asylum Seeking Children (UASC) who were looked after at 31 March 2010. This is a decrease of 12 per cent from 2009.
- There were 350 mothers aged 12 and over who were looked after at 31 March 2010. This is the same as the previous year and an increase of 18 per cent from the 2006 figure.

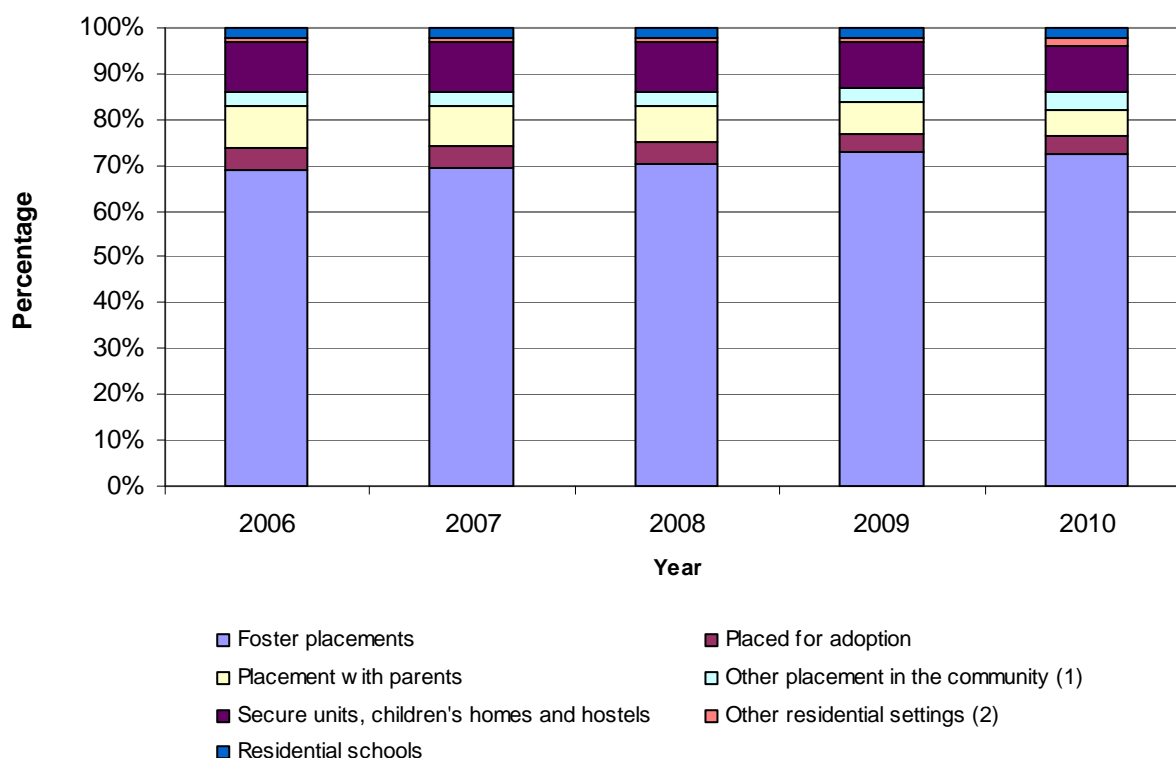
Children looked after at 31 March 2010

There were 64,400 looked after children at 31 March 2010, an increase of 6 per cent when compared to 2009. A comparison with 2006 shows an increase of 7 per cent in the number of looked after children.

At 31 March 2010, 38,200 children were looked after under a care order, which represents 59 per cent of all legal statuses. This is an increase of 5 per cent from last year's figure of 36,300 but a decrease of 4 per cent from 2006 (39,700). The number of children looked after under an interim care order is 12,500; this is an increase of 31 per cent from 2009 and an increase of 39 per cent from 2006. The number of children looked after under a voluntary agreement is 21,200; this represents 33 per cent of all legal statuses.

47,200 children were looked after at 31 March 2010 in a foster placement (73 per cent of all placements). This is an increase of 7 per cent on the previous year's figure of 43,900 and an increase of 13 per cent from 2006 (41,700). 2,300 children were placed for adoption at 31 March 2010. This is a decrease of 15 per cent from last year and a decrease of 24 per cent from the 2006 figure (3,000). The percentage of looked after children placed with parents has decreased from 9 per cent in 2006 to 6 per cent in 2010. Figure 1 shows the trends in placements from 2006 to 2010.

Figure 1: Children looked after at 31 March by placement type



1. Includes children living independently and in residential employment

2. Includes residential care homes, NHS trusts, Family centres or young offenders' institutions.

Children who started to be looked after during the year ending 31 March 2010

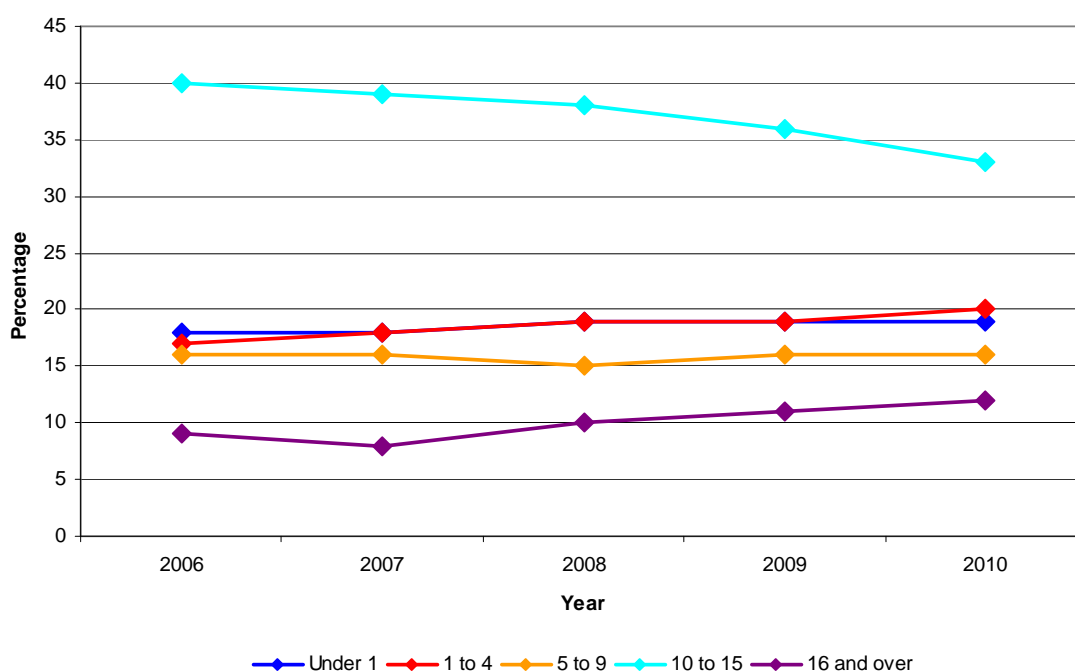
There were 27,800 children who started to be looked after during the year ending 31 March 2010, an increase of 8 per cent from the previous year's figure of 25,700 and an increase of 13 per cent from the 2006 figure of 24,600.

Of the children who started to be looked after during the year ending 31 March 2010, all age groups showed an increase in numbers compared to 2009. However larger increases were shown for children aged under 1, children aged 1 to 4 and those aged 16 or over:

- 5,300 children were aged under 1, an increase of 10 per cent compared to the 2009 figure of 4,800 and an increase of 22 per cent compared to the 2006 figure of 4,300
- 5,600 children were aged 1 to 4, an increase of 14 per cent compared to the 2009 figure of 4,900 and an increase of 30 per cent compared to the 2006 figure of 4,300.
- 4,500 children were aged 5 to 9, an increase of 11 per cent compared to the 2009 figure of 4,100. Comparisons to 2006 figures also show an increase of 11 per cent from the 2006 figure (also 4,100).
- 9,300 children were aged 10 to 15, an increase of 1 per cent compared to the 2009 (9,200) but a 6 per cent decrease when compared to the 2006 figure of 9,800.
- 3,200 children were aged 16 or over, an increase of 16 per cent compared to the 2009 figure of 2,800 and an increase of 52 per cent compared to the 2006 figure of 2,100

Although the number of children starting to be looked after aged 10 to 15 has remained relatively stable between 2009 and 2010, the proportion of children in this age group who started to be looked after during the year has decreased due to the increase in the numbers of children of other age groups. Figure 2 shows the proportions of children who started to be looked after, for each age group, during the year ending 31 March.

Figure 2: Age of children on first starting to be looked after, 2006 to 2010

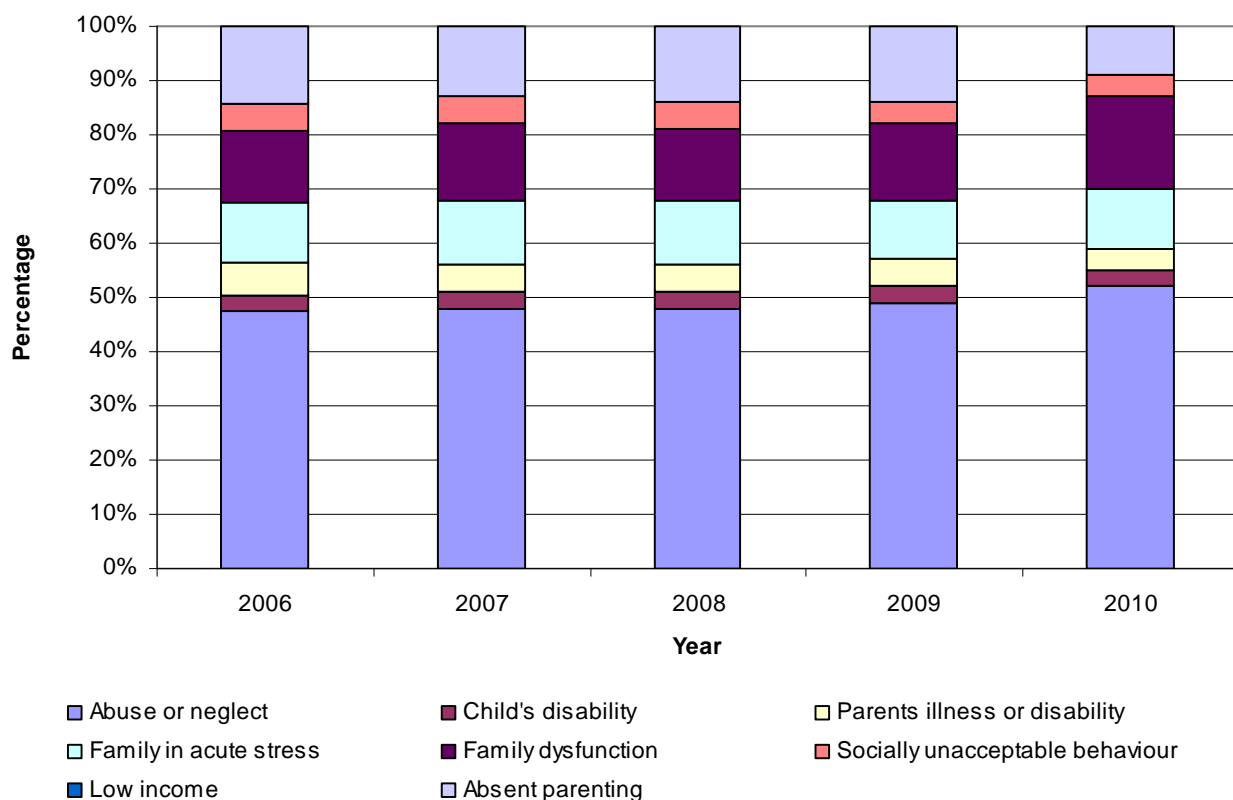


Of the children who started to be looked after during the year ending 31 March 2010, 9,500 were classified as being taken into care (see Technical Note 12). This is an increase of 16 per cent from 2009 and an increase of 23 per cent from 2006. This is a higher increase than that seen for children who started to be looked after under a voluntary agreement, the number of these children increased by 5 per cent between 2009 and 2010 to 17,800.

Of all children who started to be looked after during the year ending 31 March 2010, 52 per cent first engaged with social care services because of abuse or neglect; an increase from 47 per cent in 2006. The number of these children rose from 12,700 in 2009 to 14,500 in 2010, an increase of 15 per cent. The second most frequent reason for a child to first engage with social care services was family dysfunction, this represented 17 per cent of all children who started to be looked after during the year ending 31 March 2010.

The number of children who first engaged with social care services due to absent parenting has decreased from 3,500 in 2009 to 2,500 in 2010. This decrease will be linked to the decrease in UASC (see page 6) who form around 65 per cent of absent parenting cases. Figure 3 shows the category of need of children who started to be looked after during the year ending 31 March.

Figure 3: Category of need of children who started to be looked after during the year ending 31 March



Children who ceased to be looked after during the year ending 31 March 2010

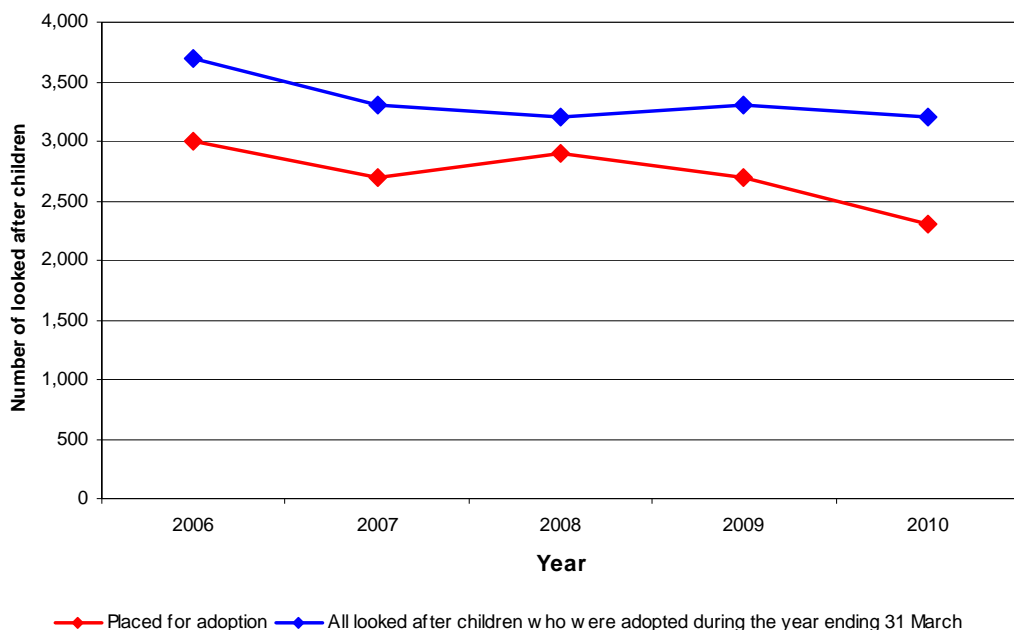
There were 25,100 children who ceased to be looked after during the year ending 31 March 2010. This is a similar figure to that of 2009, but a decrease of 3 per cent from 2006.

The percentage of children who ceased to be looked after aged between 10 and 15 years old has decreased over the last 5 years from 27 per cent in 2006 to 22 per cent in 2010. However this decrease has been offset by the rise of children aged 16 or over who ceased to be looked after. The number of children who ceased to be looked after aged 16 and over has increased from 8,200 in 2006 to 9,100 in 2010. Of these children, 62 per cent ceased to be looked after on their 18th birthday, an increase from 53 per cent in 2006. The percentage of children ceasing to be looked after at age 16 has decreased from 27 per cent in 2006 to 21 per cent during the same period. This is consistent with a general trend for looked after children to leave care at a later age.

Looked after children who were adopted during the year ending 31 March 2010

3,200 looked after children were adopted during the year ending 31 March 2010. This represents a 4 per cent decrease from the previous year's figure of 3,300 and a 14 per cent decrease from the 2006 figure of 3,700. This decrease in the number of looked after children adopted in recent years follows last years decrease in the number of children placed for adoption. The number of looked after children placed for adoption decreased from 2,900 to 2,700 between 2008 and 2009. This number fell again in 2010 to 2,300. It is therefore likely that the number of looked after children adopted will continue to decrease in 2011. Figure 4 shows the number of looked after children placed for adoption and the number adopted in each year since 2006.

Figure 4: The number of looked after children placed for adoption and the number adopted during the year ending 31 March.



The number of looked after children who were under 1 year old at adoption has decreased over the last 5 years from 200 in 2006 to 70 in 2010. The majority of adopted children are aged between 1 and 4 years at adoption; of all looked after children adopted, 70 per cent are in this age group. This represents a decrease from 2009 when 72 per cent of adoptions of looked after children were in this age group.

The percentage of adopted children whose final period of care was 3 years or over has decreased from 26 per cent in 2006 to 24 per cent in 2010. In 2010, 72.4 per cent of children who were adopted during the year were placed for adoption within 12 months of the decision that they should be placed for adoption.

91 per cent of children looked after who were adopted in the year ending 31 March 2010 were adopted by two people (2,900). Most adopters were married couples (82 per cent), 6 per cent of adopters were an unmarried couple (different gender), 2 per cent were an unmarried couple (same gender) and 2 per cent were civil partners.

9 per cent of looked after children who were adopted in the year ending 31 March 2010 were adopted by a single adopter. Of these single adopters, 93 per cent were female, this was slightly lower than in 2009.

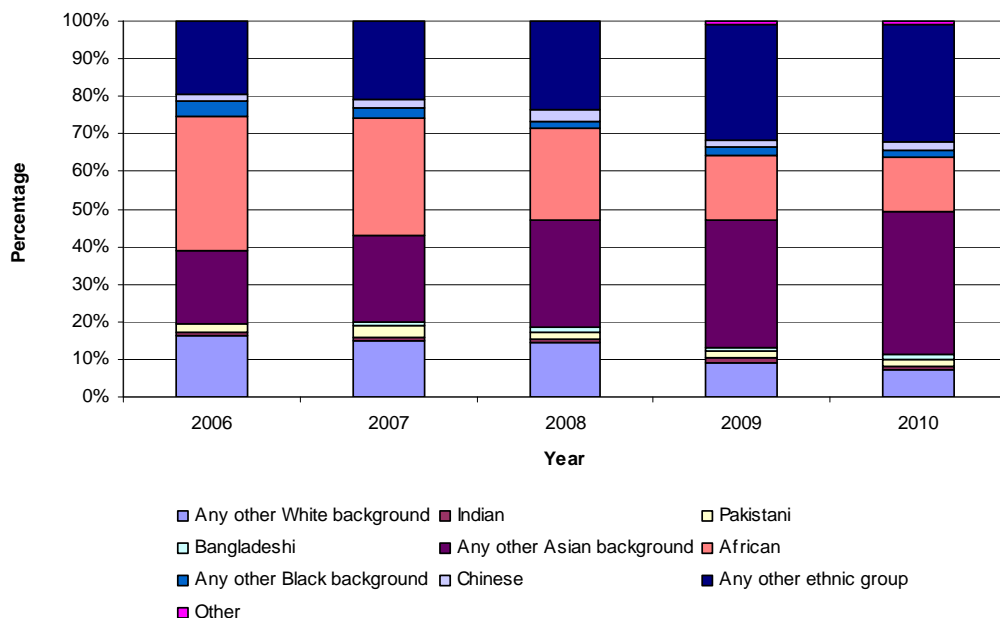
The number of children who cease to be looked after due to Special Guardianship Orders is 1,200. Special Guardianship Orders were introduced in 2005. The number of these has increased by 2 per cent from 2009 and by 68 per cent from 2007.

Unaccompanied Asylum Seeking Children (UASC)

There were 3,400 UASC who were looked after at 31 March 2010, a decrease of 12 per cent from 2009. The proportion of male UASC has continued to increase each year rising from 70 per cent in 2006 to 89 per cent in 2010. The majority of UASC are aged 16 years or over; 71 per cent are in this age group in 2010, an increase from 66 per cent in 2006.

In 2010 the percentage of UASC of Black African origin has continued to decrease. In 2010, only 14 per cent of UASC were of Black African origin compared to 35 per cent in 2006. The percentage of UASC from any other Asian background has continued to increase, from 19 per cent in 2006 to 38 per cent in 2010. Figure 5 shows the ethnic groups of all UASC.

Figure 5: Ethnic background of Unaccompanied Asylum Seeking Children



Children now aged 19 years who were looked after on 1 April 2007 then aged 16 years

The number of children now aged 19 years who were looked after on 1 April 2007 then aged 16 years is 6,200. This is an increase on the number of children aged 19 in 2006 who were looked after on 1 April 2003 then aged 16 years (5,300).

Over the past 5 years, the number of children now aged 19 years who were in higher education increased from 340 in 2006 to 460 in 2010. This represents 7 per cent of all 19 year olds who were looked after on 1 April 2007. The percentage of children now aged 19 years who were in education other than higher education increased from 22 per cent in 2006 to 30 per cent in 2010.

The percentage of these children who were in training or employment decreased from 34 per cent to 25 per cent between 2006 and 2010. The number of looked after children not in education, employment or training was 2,000, this represents 33 per cent of these children. For 290 of these young people this was due to illness or disability, for 1,700 young people this was due to other reasons. The number of children now aged 19 not in education, employment or training has increased by 5 per cent since 2009 and by 26 per cent since 2006.

The number of children who were not in touch with the local authorities was 350 in 2010, which is similar to the 2006 figure.

Most children now aged 19 years who were looked after on 1 April 2007 then aged 16 years are accommodated in independent living (42 per cent). This percentage has remained fairly stable over the last 5 years.

Mothers aged 12 and over

There were 350 mothers aged 12 and over who were looked after at 31 March 2010. This is the same as the previous year and an increase of 18 per cent from the 2006 figure.

Of looked after girls who were mothers, 48 per cent were aged 15 or under on the birth of their first child. 70 per cent were of a white ethnic background, an increase from 61 per cent in 2006. Conversely the percentage of mothers looked after from a black ethnic background has decreased from 26 per cent in the year ending 31 March 2006 to 14 per cent in 2010.

Local Authority Indicators

In April 2008 a set of Local Authority Indicators was introduced. These indicators formed part of the previous governments set of National Indicators. Further information on these is available on the Communications and Local Government website via the following link:

<http://www.communities.gov.uk/publications/localgovernment/nationalindicator>

There are currently seven Indicators which are monitored by this data:

1. Emotional and behavioural health of looked after children

This is the second year that data on the emotional and behavioural health of looked after children has been collected. Issues with the quality of the data submitted were identified in 2009; however in 2010 the data quality of this indicator is much improved. For 2010, the average score on the Strengths and Difficulties Questionnaire (SDQ) for children aged 4 to 16 who had been looked after continuously for at least twelve months as at 31 March was 14.2. The figure for 2009 was 14.0; however caution is needed in making any comparisons as SDQ questionnaires were completed for just 65 per cent of the eligible cohort in 2009. In addition there was a higher than expected proportion of zero scores in 2009.

2. Timeliness of placements of looked after children for adoption following an agency decision that the child should be placed for adoption

In 2010, 72.4 per cent of children who were adopted during the year were placed for adoption within 12 months of the decision that they should be placed for adoption. This was about 4 percentage points less than in 2006.

3. Stability of placements of looked after children: number of placements

10.9 per cent of children had three or more placements during 2010. This figure has decreased steadily from 12.9 per cent since 2006.

4. Stability of placements of looked after children: length of placement

68.0 per cent of children who had been looked after for two-and-a-half years or more had, in the past two years to 31 March 2010, lived in the same placement or their combined adoptive placement and preceding placement. This percentage has increased gradually since 2006 when the percentage was 63.5 per cent.

5. Looked after children cases which were reviewed within required timescales

90.5 per cent of children had their cases reviewed within the required timescales during 2010. This percentage has increased from 78.9 per cent in 2006 but there has been little change compared to last year (90.9 per cent).

6. Care leavers in suitable accommodation

90.3 per cent of former care leavers, with whom the local authorities were in touch during 2010, were considered to be in suitable accommodation around the time of their 19th birthday. This compares with 88.0 per cent during 2006 and 89.6 per cent last year.

7. Care leavers in education, employment or training

In the past 4 years the percentage of former care leavers, with whom the local authorities were in touch and who were in education, employment or training around the time of their 19th birthday, has varied. Despite increasing from 62.7 per cent in 2006 to 64.9 per cent in 2008, it has decreased in both 2009 and 2010 and is now 62.1 per cent.

Tables

Children looked after at 31 March 2010 - Tables A1 to A5

- A1** Children looked after at 31 March by gender, age at 31 March, category of need, and ethnic origin, 2006 to 2010
- A2** Children looked after at 31 March by legal status, 2006 to 2010
- A3** Children looked after at 31 March by placement, 2006 to 2010
- A4** Unaccompanied Asylum Seeking Children looked after at 31 March by gender, age at 31 March, category of need and ethnic origin, 2006 to 2010
- A5** Mothers aged 12 years and over looked after at 31 March by age at 31 March, age at birth of first child, category of need, ethnic origin, placement and region, 2006 to 2010

Children looked after during the year ending 31 March 2010, under at least one agreed series of short term placements - Table B1

- B1** Children looked after during the year under at least one agreed series of short term placements by gender, by age at the end of the latest period of care or at 31 March if child is still covered by an agreement, by placement, and by category of need for years ending 31 March, 2006 to 2010

Children who started to be looked after during the year ending 31 March 2010 – Tables C1 to C4

- C1** Children who started to be looked after during the years ending 31 March by gender, age on starting, category of need and ethnic origin, 2006 to 2010
- C2** Children who started to be looked after during the years ending 31 March by legal status on starting, 2006 to 2010
- C3** Children who started to be looked after during the years ending 31 March by placement on starting, 2006 to 2010
- C4** Children who were taken into care during the years ending 31 March, by gender, age on starting, category of need and ethnicity, 2006 to 2010

Children who ceased to be looked after during the year ending 31 March 2010– Tables D1 to D2

- D1** Children who ceased to be looked after during the years ending 31 March by gender, age on ceasing, reason episode ceased, category of need and ethnic origin, 2006 to 2010
- D2** Children who ceased to be looked after during the years ending 31 March by placement on ceasing, 2006 to 2010

Children looked after who were adopted during the year ending 31 March 2010 – Tables E1 and E2

- E1** Looked after children who were adopted during the years ending 31 March by gender, age at adoption, ethnic origin, category of need, final legal status, duration of final period of care and age on starting final period of care, 2006 to 2010
- E2** Looked after children who were adopted during the years ending 31 March by number of adopters, legal status of adopters and by gender of adopters, 2007 to 2010

Children who ceased to be looked after aged 16 years and over during the year ending 31 March 2010 – Table F1

- F1** Children aged 16 years and over who ceased to be looked after during the years ending 31 March by gender, age on ceasing, ethnic origin and final placement, 2006 to 2010

Children now aged 19 years who were looked after on 1 April then aged 16 years – Table G1

- G1** Children now aged 19 years who were looked after on 1 April 2003 to April 2007 then aged 16 years (in their 17th year) by gender, activity and accommodation, 2006 to 2010

Local Authority Indicators

- I1** Emotional Behaviour of Looked After Children - Average score for children looked after at 31 March for whom a Strength and Difficulties Questionnaire (SDQ) was completed, 2009 to 2010
- I2** The percentage of children looked after adopted during the year who were placed for adoption within 12 months of a local authority deciding that the child should be placed for adoption (and were subsequently adopted in that placement), 2006 to 2010
- I3** The percentage of children looked after at 31 March with three or more placements during the year ending 31 March, 2006 to 2010
- I4** The percentage of children looked after aged under 16 at 31 March who had been looked after continuously for at least 2.5 years who were living in the same placement for at least 2 years, or are placed for adoption and their adoptive placement together with their previous placement together last for at least 2 years, 2006 to 2010
- I5** The percentage of children looked after cases which should have been reviewed during the year ending 31 March that were reviewed on time during the year, 2006 to 2010
- I6** The percentage of former care leavers aged 19 who were looked after on 1 April in their 17th year, who were in suitable accommodation, 2006 to 2010
- I7** The percentage of former care leavers aged 19 who were looked after on 1 April in their 17th year, who were in education, employment or training, 2006 to 2010

Additional Information

Further information on looked after children, including detailed Local Authority level analysis will be released between October and December in a series of three batches of additional tables. These will be arranged into 6 themes:

- Children looked after at 31 March
- Children who started to be looked after during the year ending 31 March
- Children who ceased to be looked after during the year ending 31 March
- Children looked after who were adopted during the year ending 31 March
- Children who ceased to be looked after aged 16 years and over during the year ending 31 March
- Children now aged 19 years who were looked after on 1 April then aged 16

The additional information will be published on 28 October 2010, 25 November 2010 and 16 December 2010. A full schedule showing which tables are included under each theme and a publication date is shown on the web site for this publication.

This can be accessed at: <http://www.dcsf.gov.uk/rsgateway/DB/SFR/s000960/index.shtml>.

The data underlying this publication is planned to be published on 28 October 2010 and will be added to following each release of additional tables. The underlying data will be added to the web page of the publication which can be accessed on the link above.

Information on outcomes for looked after children is expected to be published on 16 December. This will include information on educational attainment, exclusions and absence from school, cautions and convictions, health and substance misuse of looked after children.

TECHNICAL NOTES

Data Collection

1. The 2009-10 figures for looked after children are the latest in a regular series. Data are collected on the SSDA903 return, which provides the Department for Education with data on looked after children in England. It also covers adoptions of looked after children, educational qualifications of care leavers, the activity of former care leavers aged 19, and the Local Authority Performance Indicators.
2. All references made to “year” relate to the standard financial year which runs from 1 April to 31 March (for example 2010 should be understood as 1 April 2009 to 31 March 2010).
3. The figures presented for the year ending 31 March 2010 are based on data reported by all 152 local authorities in England, with the exception of Isles of Scilly who are not required to submit a return as they do not have any looked after children within their authority.
4. The database used to collect this information is longitudinal with one record for every child. As local authorities are continually updating the database every year, previous year’s figures have also been amended where there have been changes (see footnotes on historical changes in the relevant tables). The information collected contains details about the child (for example gender, date of birth, unique pupil number) and details about the child’s episodes in care (for example category of need, legal status under which the child is looked after and type of placement). When a change in legal status or placement (or both) occurs, a new episode of care is started and the date and reason for the change are recorded. Information is supplied to the Department for Education annually, and these records are then linked (by a unique identifier for each child) to any supplied by the same local authority in preceding years (from 1992 onwards).
5. Between 1997-98 and 2002-03 local authorities were required to submit a CLA100 return along with the SSDA903 return. The CLA100 was an aggregate return completed for all children looked after at 31 March while the SSDA903 was a one-in-three sample survey. From year ending 31 March 2004, the SSDA903 covered all children looked after and so the CLA100 was not required. Between 1997-98 and 2002-03, the AD1 return was completed for all children looked after who were adopted during the year; the OC1 return collected data on the qualifications achieved at the point of leaving care for young people leaving care in the year aged 16 and over; and the OC3 return collected data on the activity and accommodation of former care leavers at age 19 who were looked after on 1 April aged 16 years old (in their 17th year). From year ending 31 March 2004, these returns were collected as part of the SSDA903 data collection and so are not referred to as such anymore.
6. Guidance notes and other documents useful for the completion of the SSDA903 return can be found on the DfE children’s statistical returns website at:

<http://www.education.gov.uk/researchandstatistics/statisticalreturns/childrenlar/a0063862/children-looked-after-ssda903-return>

Rounding Conventions

7. Figures have been rounded to the nearest 100 if they exceed 1,000 and to the nearest 10 otherwise, with the exception of numbers from one to five inclusive which for confidentiality purposes have been replaced in the published tables by a cross (x). Where any number is shown as zero (0), the original figure submitted was zero (0). The following convention has been used:

“.” means not applicable

“-“ means negligible – used to represent a percentage below 0.5%

8. Percentages have been rounded to whole numbers (with the exception of figures for Local Authority Performance Indicators which are shown to 1 decimal place) but where the numerator was five or less or the denominator was 10 or less, they have been suppressed and replaced by a cross (x). Note that percentages may not sum to 100 due to rounding.
9. It has been necessary to suppress other figures whenever it would be possible to calculate the value of a suppressed number by means of simple arithmetic. The rule applied in these circumstances has been to suppress the next smallest data item provided its value is strictly less than 20.

New Data

10. Placement provider information gives details on the party providing each placement. Placement location provides information on whether the placement is inside or outside the local authority responsible for providing the child's care. We will publish information on placement provider and placement location within our additional set of tables. This information was first collected in 2009 but due to concerns about the quality of the data it was not published. Information on placement provider is published in 2010 for the first time
11. Some of the information previously collected via the Outcome Indicators (OC2) return for children looked after continuously for at least 12 months at 31 March was added to the SSDA903 for the first time in 2008-09. The information collected included data on offending, health promotion checks, immunisations, dental checks, health assessments, substance misuse problem identification and intervention, and position and activity after year 11. This will form part of the Outcomes for Looked After Children SFR which is published in December.
12. Children taken into care is defined as children who started to be looked after under a care order (full or interim), or who are detained on child protection grounds (police protection, emergency protection orders or child assessment orders). Information on children taken into care is published in this SFR for the first time in 2010.

Data quality

13. The 2010 data shows that there are still children subject to freeing orders even though applications for freeing orders could not be made on or after 30 December 2005 as they were replaced by placement orders. Such high numbers of children subject to freeing orders four years after they have come to an end are not expected. Further guidance on the use of freeing orders has been included in our guidance notes.

14. This release has reported that there were 60,900 children looked after at 31 March 2009, the same figure reported in last year's publication. This release reports the number of children starting to be looked after in the year ending 31 March 2009 as 25,700. In the 2009 release this figure was published as 25,400. The number of children who ceased to be looked after in the year ending 31 March 2009 was 25,100. In 2009 this was reported as being 24,700. Some revisions to previously published data occur as a result of amendments and corrections made by Local Authorities to their historical data. Records for the years since 2005 can be amended directly by Local Authorities. Common amendments include correcting episode information and including missing records. Changes required to records prior to 2005 and corrections to dates of birth, sex or ethnicity for all historical records can only be made by DfE.
15. Grossing Factors have been applied to the data in order to compensate for records with errors in their episodes. These are calculated by comparing the number of valid looked after children records reported in the return with the number of invalid records in the system. Because of the rigorous validation checks applied to data submitted, such discrepancies are usually very low and the grossing factors applied are close to 1.
16. Rates per 10,000 of the population have been calculated using the appropriate mid-year estimates of the number of children in England aged under 18 years supplied by the Office for National Statistics.

Local Authority Reorganisation

17. Bedford Borough, Central Bedfordshire, Cheshire East and Cheshire West and Chester were formed in the reorganisation of Bedfordshire and Cheshire on 1 April 2009. These local authorities supplied the Department with information indicating which local authority had taken over responsibility regarding children looked after at 31 March 2009 and children now aged 19 years who were looked after on 1 April 2007 then aged 16 years.

Related Publications

18. Details of statistics on looked after children published by other countries in the UK can be found below.

Scotland

Children Looked After Statistics are produced annually by the Scottish Government. The most recent data published on 24th February 2010 can be found at the following link:

<http://www.scotland.gov.uk/Publications/2010/02/22133946/0>

Wales

Statistics on Children Looked After in Wales are produced annually by the Local Government Data Unit and the Welsh Assembly Government. Data for the period up to the end of March 2010 were released on 16th September 2010 and can be found at the following link:

<http://wales.gov.uk/topics/statistics/headlines/health2010/100916/?lang=en>

Northern Ireland

The Children Order Statistical Bulletin and Children Order Statistical Tables are produced annually by the Department of Health, Social Services and Public Safety and include information on looked after children in Northern Ireland. The most recent data published in 30th April 2010 can be found at the following link:

http://www.dhsspsni.gov.uk/index/stats_research/stats-cib-3/statistics_and_research-cib-pub/children_statistics/stats-cib-children_order.htm

England:

Information on referrals, assessments and children who were the subject of a child protection plan (taken from the 2009-10 Children in Need census) was published on 30 September and can be found at the following link:

<http://www.dcsf.gov.uk/rsgateway/DB/STR/d000959/index.shtml>

Further information from the Children in Need Census will be published in November.

Information on care proceedings applications made by local authorities where CAFCASS has been appointed by the court to represent the interests of children are published by CAFCASS (Children and Family Court Advisory and Support Service). The latest information covers Quarter 1 of 2010-11 and can be found at:

http://www.cafcass.gov.uk/news/2010/q1_care_statistics_2010_-_11.aspx

A National Statistics publication

The United Kingdom Statistics Authority has designated these statistics as National Statistics, in accordance with the Statistics and Registration Service Act 2007 and signifying compliance with the Code of Practice for Official Statistics. Designation can be broadly interpreted to mean that the statistics:

- meet identified user needs;
- are well explained and readily accessible;
- are produced according to sound methods, and
- are managed impartially and objectively in the public interest.

Once statistics have been designated as National Statistics it is a statutory requirement that The Code of Practice shall continue to be observed. This publication has been designated as National Statistics following assessment by the United Kingdom Statistics Authority.

Looked after children data user group:

This is a group which aims to seek feedback on whether these statistics are meeting users' requirements and to consult on any future changes to this data collection and the timing and format of our outputs. If you would like to participate in this group then please [register your interest via email](#).

ENQUIRIES

Enquiries about the figures contained in this press release should be addressed to:

Data Services Group
Department for Education
Sanctuary Buildings
Great Smith Street
LONDON
SW1P 3BT
Email: cla.stats@education.gsi.gov.uk

Press enquiries should be made to the Department's Press Office at:

Press Office
Department for Education
Sanctuary Buildings
Great Smith Street
LONDON
SW1P 3BT
Telephone Number: 020 7925 6789

Statistical First Release 2009-2010

ENGLAND SUMMARY TABLES

Trends - Children looked after at 31 March

[Table A1:](#) Children looked after at 31 March by gender, age at 31 March, category of need, and ethnic origin.

Years ending 31 March 2006 to 2010

Coverage England

[Table A2:](#) Children looked after at 31 March by legal status.

Years ending 31 March 2006 to 2010

Coverage England

[Table A3:](#) Children looked after at 31 March by placement.

Years ending 31 March 2006 to 2010

Coverage England

[Table A4:](#) Unaccompanied Asylum Seeking Children looked after at 31 March by gender, age at 31 March, category of need and ethnic origin.

Years ending 31 March 2006 to 2010

Coverage England

[Table A5:](#) Mothers aged 12 years and over looked after at 31 March by age at 31 March, age at birth of first child, category of need, ethnic origin, placement and region.

Years ending 31 March 2006 to 2010

Coverage England

Trends - Children looked after during the year ending 31 March

[Table B1:](#) Children looked after during the year under at least one agreed series of short term placements by gender, by age at the end of the latest period of care or at 31 March if child is still covered by an agreement, by placement, and by category of need.

Years ending 31 March 2006 to 2010

Coverage England

Trends - Children who started to be looked after in the years ending 31 March

[Table C1:](#) Children who started to be looked after during the years ending 31 March by gender, age on starting, category of need and ethnic origin.

Years ending 31 March 2006 to 2010

Coverage England

[Table C2:](#) Children who started to be looked after during the years ending 31 March by legal status on starting.

Years ending 31 March 2006 to 2010

Coverage England

[Table C3:](#) Children who started to be looked after during the years ending 31 March by placement on starting.

Years ending 31 March 2006 to 2010

Coverage England

[Table C4:](#) Children who were taken into care during the years ending 31 March by gender, age on starting, category of need and ethnic origin

Years ending 31 March 2006 to 2010

Coverage England

Trends - Children who ceased to be looked after in the years ending 31 March

[Table D1:](#) Children who ceased to be looked after during the years ending 31 March by gender, age on ceasing, reason episode ceased, category of need and ethnic origin.

Years ending 31 March 2006 to 2010

Coverage England

[Table D2:](#) Children who ceased to be looked after during the years ending 31 March by placement on ceasing.

Years ending 31 March 2006 to 2010

Coverage England

Trends - Looked after children adopted in the years ending 31 March

[Table E1:](#) Looked after children who were adopted during the years ending 31 March by gender, age at adoption, ethnic origin, category of need, final legal status, duration of final period of care and age on starting final period of care.

Years ending 31 March 2006 to 2010

Coverage England

[Table E2:](#) Looked after children who were adopted during the years ending 31 March by number of adopters, legal status of adopters and gender of adopters.

Years ending 31 March 2007 to 2010

Coverage England

Trends - Care leavers - Children who ceased to be looked after aged 16 and over during the years ending 31 March

[Table F1:](#) Children aged 16 years and over who ceased to be looked after during the years ending 31 March by gender, age on ceasing, ethnic origin and final placement.

Years ending 31 March 2006 to 2010

Coverage England

Trends - Former care leavers - 19 years old former care leavers in the year ending 31 March

[Table G1:](#) Children now aged 19 years who were looked after on 1 April 2001 to April 2005 then aged 16 years (in their 17th year) by gender, activity and accommodation

Years ending 31 March 2006 to 2010

Coverage England

Table A1: Children looked after at 31 March by gender, age at 31 March, category of need, and ethnic origin^{1,2,3}

Years ending 31 March 2006 to 2010

Coverage: England

rates per 10,000 children under 18 years

	2006	2007	2008	2009	2010					
						numbers and percentages				
	numbers					percentages				
	2006	2007	2008	2009	2010	2006	2007	2008	2009	2010
All children looked after at 31 March	60,300	60,000	59,400	60,900	64,400					
Rates per 10,000 children under 18 years⁴	55	55	54	55	58					
All children looked after at 31 March	60,300	60,000	59,400	60,900	64,400	100	100	100	100	100
Gender	60,300	60,000	59,400	60,900	64,400	100	100	100	100	100
Male	33,400	33,400	33,400	34,600	36,100	55	56	56	57	56
Female	26,900	26,600	26,000	26,300	28,200	45	44	44	43	44
Age at 31 March (years)	60,300	60,000	59,400	60,900	64,400	100	100	100	100	100
Under 1	2,900	3,000	2,900	3,300	3,700	5	5	5	5	6
1 to 4	8,400	8,700	9,000	9,500	10,900	14	15	15	16	17
5 to 9	11,500	10,900	10,400	10,500	11,200	19	18	17	17	17
10 to 15	26,200	25,500	24,900	24,900	24,900	43	43	42	41	39
16 and over	11,300	11,800	12,200	12,900	13,800	19	20	20	21	21
Category of need⁵	60,300	60,000	59,400	60,900	64,400	100	100	100	100	100
Abuse or neglect	37,600	37,200	36,700	37,100	39,200	62	62	62	61	61
Child's disability	2,400	2,300	2,300	2,200	2,200	4	4	4	4	3
Parents illness or disability	3,200	3,000	2,800	2,700	2,800	5	5	5	4	4
Family in acute stress	4,500	4,700	4,900	5,300	5,800	7	8	8	9	9
Family dysfunction	6,200	6,300	6,300	6,900	8,000	10	11	11	11	12
Socially unacceptable behaviour	1,300	1,300	1,200	1,200	1,300	2	2	2	2	2
Low income	110	110	130	140	170	-	-	-	-	-
Absent parenting	5,100	5,000	5,100	5,300	4,900	8	8	9	9	8
Ethnic origin	60,300	60,000	59,400	60,900	64,400	100	100	100	100	100
White	47,000	46,500	45,700	46,400	49,000	78	77	77	76	76
White British	45,000	44,600	43,800	44,500	47,100	75	74	74	73	73
White Irish	450	410	420	390	390	1	1	1	1	1
Traveller of Irish Heritage ⁶	.	.	.	20	30
Gypsy/Roma ⁶	.	.	.	30	50
Any other White background	1,500	1,500	1,500	1,400	1,500	3	2	3	2	2
Mixed	5,200	5,300	5,200	5,200	5,500	9	9	9	9	8
White and Black Caribbean	2,000	2,100	2,000	2,000	2,000	3	3	3	3	3
White and Black African	450	470	480	480	520	1	1	1	1	1
White and Asian	780	820	780	760	840	1	1	1	1	1
Any other mixed background	2,000	2,000	1,900	2,000	2,100	3	3	3	3	3
Asian or Asian British	2,100	2,300	2,600	3,000	3,200	3	4	4	5	5
Indian	300	290	300	300	320	-	-	1	-	-
Pakistani	610	640	670	670	740	1	1	1	1	1
Bangladeshi	280	280	310	350	410	-	-	1	1	1
Any other Asian background	910	1,100	1,300	1,600	1,700	2	2	2	3	3
Black or Black British	4,900	4,700	4,500	4,400	4,500	8	8	7	7	7
Caribbean	1,600	1,600	1,600	1,500	1,600	3	3	3	3	3
African	2,400	2,300	2,100	2,100	2,100	4	4	4	3	3
Any other Black background	830	790	740	760	840	1	1	1	1	1
Other ethnic groups	1,100	1,200	1,400	1,800	1,800	2	2	2	3	3
Chinese	120	130	130	140	130	-	-	-	-	-
Any other ethnic group	1,000	1,100	1,300	1,700	1,600	2	2	2	3	3
Other	.	.	.	170	420	1
Refused ⁶	.	.	.	20	30
Information not yet available ⁶	.	.	.	150	390	1

Source: SSSA 903

- Numbers have been rounded to the nearest 100 if they exceed 1000, and to the nearest 10, otherwise. Percentages have been rounded to the nearest whole number. See Technical Notes for more information on rounding.
- Figures exclude children looked after under an agreed series of short term placements.
- Historical data may differ from older publications. This is mainly due to the implementation of amendments and corrections sent by some local authorities after the publication date of previous materials.
- The rates per 10,000 children under 18 years have been derived using the mid-year population estimates for 2009 provided by the Office for National Statistics.
- The most applicable category of the eight "Need Codes" at the time the child started to be looked after rather than necessarily the entire reason they are looked after.
- Ethnic origin classification collected for the first time in 2009.

. Not applicable.
- Negligible. Percentage below 0.5%

Table A2: Children looked after at 31 March by legal status^{1,2,3}
Years ending 31 March 2006 to 2010
Coverage: England

Legal Status at 31 March	numbers and percentages									
	numbers					percentages				
	2006	2007	2008	2009	2010	2006	2007	2008	2009	2010
All children looked after at 31 March	60,300	60,000	59,400	60,900	64,400	100	100	100	100	100
Care Orders	39,700	38,500	36,900	36,300	38,200	66	64	62	60	59
Interim care orders	9,000	9,300	8,800	9,500	12,500	15	15	15	16	19
Full care orders	30,600	29,300	28,100	26,800	25,700	51	49	47	44	40
Freed for adoption⁴	2,200	920	600	420	320	4	2	1	1	-
Placement Order granted⁵	530	3,100	4,400	4,500	4,300	1	5	7	7	7
Voluntary agreements under S20 CA 1989 (single placements)	17,700	17,200	17,300	19,400	21,200	29	29	29	32	33
Detained for child protection	80	30	30	70	80	-	-	-	-	-
Police protection	30	10	10	30	40	-	-	-	-	-
Emergency protection orders	50	20	10	50	50	-	-	-	-	-
Under Child Assessment Order	0	0	0	0	0	0	0	0	0	0
Youth Justice legal statuses	170	200	180	180	200	-	-	-	-	-
On remand or committed for trial	150	180	170	170	190	-	-	-	-	-
Detained under PACE ⁶	0	0	0	0	x	0	0	0	0	x
Supervision order	20	20	10	10	10	-	-	-	-	-

Source: SSDA903

1. Numbers have been rounded to the nearest 100 if they exceed 1000, and to the nearest 10, otherwise. Percentages have been rounded to the nearest whole number. See Technical Notes for more information on rounding.
 2. Figures exclude children looked after under an agreed series of short term placements.
 3. Historical data may differ from older publications. This is mainly due to the implementation of amendments and corrections sent by some local authorities after the publication date of previous materials.
 4. No new applications for freeing orders may be made on or after 30 December 2005.
 5. Placement orders came into force on 30 December 2005.
 6. Children detained in local authority accommodation under section 38(6) of the Police and Criminal Evidence Act 1984.
- x Figures not shown in order to protect confidentiality. See Technical Notes for information on data suppression.
- Negligible. Percentage below 0.5%

Table A3: Children looked after at 31 March by placement^{1,2,3}
Years ending 31 March 2006 to 2010
Coverage: England

Placement at 31 March	numbers and percentages									
	numbers					percentages				
	2006	2007	2008	2009	2010	2006	2007	2008	2009	2010
All children looked after at 31 March	60,300	60,000	59,400	60,900	64,400	100	100	100	100	100
Foster placements	41,700	42,100	42,000	43,900	47,200	69	70	71	72	73
Foster placement inside Council boundary										
With relative or friend	5,300	5,100	5,000	4,900	5,200	9	9	8	8	8
With other foster carer provided by Council	19,900	19,900	19,600	20,000	20,800	33	33	33	33	32
arranged through agency ⁴	2,000	2,400	2,800	3,300	4,100	3	4	5	5	6
Foster placement outside Council boundary										
With relative or friend	2,000	1,900	1,900	1,900	2,000	3	3	3	3	3
With other foster carer provided by Council	5,400	5,300	5,200	5,900	6,300	9	9	9	10	10
arranged through agency ⁴	7,000	7,400	7,500	7,900	8,700	12	12	13	13	14
Placed for adoption⁵	3,000	2,700	2,900	2,700	2,300	5	5	5	4	4
Placed for adoption with consent with current foster carer (under S19 AA 2002)		130	110	60	30		-	-	-	-
Placed for adoption with placement order with current foster carer (under S21 AA 2002)	330	170	180	190	240	1	-	-	-	-
Placed for adoption with consent not with current foster carer (under S19 AA 2002)		750	610	290	170		1	1	-	-
Placed for adoption with placement order not with current foster carer (under S21 AA 2002)	2,700	1,700	1,900	2,100	1,800	4	3	3	3	3
Placement with parents	5,400	5,100	4,600	4,200	4,200	9	9	8	7	6
Other placement in the community	1,700	1,700	1,900	2,100	2,300	3	3	3	3	4
Living independently	1,700	1,700	1,900	2,100	2,300	3	3	3	3	4
Residential employment	x	x	x	x	10	x	x	x	x	-
Secure units, children's homes and hostels	6,700	6,500	6,200	6,100	6,200	11	11	11	10	10
Secure unit inside Council boundary	20	30	20	20	40	-	-	-	-	-
Secure unit outside Council boundary ⁶	170	170	160	190	200	-	-	-	-	-
Homes and hostels subject to Children's Homes regulations										
inside Council boundary	3,000	2,900	2,900	2,700	2,600	5	5	5	4	4
outside Council boundary	2,300	2,300	2,100	2,200	2,300	4	4	4	4	4
Homes and hostels <i>not</i> subject to Children's Homes regulations	1,100	1,100	1,000	1,000	1,000	2	2	2	2	2
Other residential settings	580	590	570	730	970	1	1	1	1	2
Residential care homes	230	230	250	350	540	-	-	-	1	1
NHS Trust providing medical/nursing care	90	70	80	90	120	-	-	-	-	-
Family centre or mother and baby unit	120	140	100	150	190	-	-	-	-	-
Young offenders institution or prison	140	150	140	150	130	-	-	-	-	-
Residential schools	1,200	1,100	1,100	1,000	1,000	2	2	2	2	2
Missing - Absent for more than 24 hours from agreed placement	140	150	130	120	110	-	-	-	-	-
In refuge (section 51 of Children Act, 1989)	x	x	x	x	x	x	x	x	x	x
Whereabouts known (not in refuge)	20	30	40	30	30	-	-	-	-	-
Whereabouts unknown	120	120	100	90	80	-	-	-	-	-
Other placement	120	90	70	100	120	-	-	-	-	-

Source: SSDA903

- Numbers have been rounded to the nearest 100 if they exceed 1000, and to the nearest 10, otherwise. Percentages have been rounded to the nearest whole number. See Technical Notes for more information on rounding.
 - Figures exclude children looked after under an agreed series of short term placements.
 - Historical data may differ from older publications. This is mainly due to the implementation of amendments and corrections sent by some local authorities after the publication date of previous materials.
 - This category includes new placement provider codes "Other Local Authority provision", "private provision" and "voluntary/third sector provision" for 2009 and 2010 only.
 - Since 2004-05 placed for adoption has been disaggregated by whether the placement is or is not with current foster carer. Since 2006-07 placement also disaggregated according to whether consent was given or a placement order sought.
 - There are currently only 16 secure units operating in England therefore most placements will inevitably be outside the council boundary.
- x Figures not shown in order to protect confidentiality. See Technical Notes for information on data suppression.
- Negligible. Percentage below 0.5%

Table A4: Unaccompanied Asylum Seeking Children looked after at 31 March by gender, age at 31 March, category of need and ethnic origin^{1,2,3}
Years ending 31 March 2006 to 2010
Coverage: England

	numbers and percentages									
	numbers					percentages				
	2006	2007	2008	2009	2010	2006	2007	2008	2009	2010
Unaccompanied Asylum Seeking Children looked after at 31 March	3,400	3,400	3,500	3,900	3,400	100	100	100	100	100
Gender	3,400	3,400	3,500	3,900	3,400	100	100	100	100	100
Male	2,400	2,600	2,800	3,300	3,000	70	76	81	87	89
Female	1,000	830	680	520	380	30	24	19	13	11
Age at 31 March (years)	3,400	3,400	3,500	3,900	3,400	100	100	100	100	100
Under 16	1,100	1,200	1,200	1,300	1,000	34	34	33	33	29
16 and over	2,200	2,200	2,300	2,600	2,400	66	66	67	67	71
Category of need⁴	3,400	3,400	3,500	3,900	3,400	100	100	100	100	100
Abuse or neglect	80	70	60	50	60	2	2	2	1	2
Child's disability	0	x	0	0	x	0	x	0	0	x
Parents illness or disability	x	x	0	0	0	x	x	0	0	0
Family in acute stress	10	10	20	60	90	-	-	1	2	3
Family dysfunction	10	20	20	20	30	-	-	-	1	1
Socially unacceptable behaviour	10	10	10	10	10	-	-	-	-	-
Low income	10	10	10	20	10	-	-	-	-	-
Absent parenting	3,200	3,300	3,400	3,700	3,200	96	97	97	96	94
Ethnic origin	3,400	3,400	3,500	3,900	3,400	100	100	100	100	100
White	540	500	500	380	250	16	15	14	10	7
White British	10	10	20	10	20	-	-	-	-	-
White Irish	0	0	0	0	0	0	0	0	0	0
Traveller of Irish Heritage ⁵	.	.	.	0	0	.	.	.	0	0
Gypsy/Roma ⁵	.	.	.	x	x	.	.	.	x	x
Any other White background	530	490	490	360	240	16	15	14	9	7
Mixed	50	30	30	30	30	1	1	1	1	1
White and Black Caribbean	x	x	x	x	x	x	x	x	x	x
White and Black African	10	10	10	10	10	-	-	-	-	-
White and Asian	10	10	10	10	x	-	-	-	-	x
Any other mixed background	30	10	10	10	10	1	-	-	-	-
Asian or Asian British	750	910	1,100	1,400	1,400	22	27	32	37	42
Indian	20	20	30	40	40	1	1	1	1	1
Pakistani	60	90	90	80	70	2	3	2	2	2
Bangladeshi	20	20	20	30	30	-	1	1	1	1
Any other Asian background	640	780	1,000	1,300	1,300	19	23	28	33	38
Black or Black British	1,300	1,100	930	740	540	39	34	27	19	16
Caribbean	10	10	x	x	x	-	-	x	x	x
African	1,200	1,000	850	660	470	35	31	24	17	14
Any other Black background	120	90	80	80	70	4	3	2	2	2
Other Ethnic groups	710	790	910	1,300	1,100	21	23	26	32	33
Chinese	70	80	90	80	50	2	2	3	2	2
Any other ethnic group	640	710	820	1,200	1,100	19	21	23	30	31
Other	.	.	.	30	40	.	.	.	1	1
Refused ^b	.	.	.	x	x	.	.	.	x	x
Information not yet available ^b	.	.	.	30	40	.	.	.	1	1

Source: SSDA 903

1. Numbers have been rounded to the nearest 100 if they exceed 1000, and to the nearest 10, otherwise. Percentages have been rounded to the nearest whole number. See Technical Notes for more information on rounding.
2. Figures exclude children looked after under an agreed series of short term placements.
3. Historical data may differ from older publications. This is mainly due to the implementation of amendments and corrections sent by some local authorities after the publication date of previous materials.
4. The most applicable category of the eight "Need Codes" at the time the child started to be looked after rather than necessarily the entire reason they are looked after.
5. Ethnic origin classification collected for the first time in 2009.

x Figures not shown in order to protect confidentiality. See Technical Notes for information on data suppression.
 . Not applicable.
 - Negligible. Percentage below 0.5%

Table A5: Mothers aged 12 years old and over looked after at 31 March by age at 31 March, age at birth of first child category of need, ethnic origin, placement and region^{2,3}
Years ending 31 March 2006 to 2010
Coverage: England

	numbers and percentages									
	numbers					percentages				
	2006	2007	2008	2009	2010	2006	2007	2008	2009	2010
All females looked after at 31 March	26,900	26,600	26,000	26,300	28,200					
All females aged 12 years old and over looked after at 31 March	13,600	13,300	13,000	13,000	13,700					
All mothers aged 12 years old and over looked after at 31 March	300	360	320	350	350	100	100	100	100	100
Age at 31 March (years)	300	360	320	350	350	100	100	100	100	100
12 to 14	10	10	10	20	10	2	3	2	4	4
15	40	40	40	30	40	12	12	12	8	11
16	100	110	90	100	100	32	30	28	30	29
17	160	200	190	200	200	54	55	59	57	56
18 and over	0	0	0	x	0	0	0	0	x	0
Age at birth of first child (years)⁴	300	360	320	350	350	100	100	100	100	100
12 to 14	50	50	40	40	60	17	14	13	12	16
15	90	90	90	90	110	31	26	28	27	32
16	100	110	120	130	120	33	30	39	37	35
17	60	60	60	80	60	18	16	19	24	17
18 and over	0	0	0	0	0	0	0	0	0	0
Birth date not reported	x	50	0	x	x	x	14	0	x	x
Category of need⁵	300	360	320	350	350	100	100	100	100	100
Abuse or neglect	160	180	170	180	180	52	51	53	52	51
Child's disability	x	x	x	0	0	x	x	x	0	0
Parents illness or disability	10	10	10	20	10	2	2	4	5	3
Family in acute stress	30	30	30	30	40	10	8	9	7	10
Family dysfunction	50	70	60	60	70	16	18	17	18	19
Socially unacceptable behaviour	10	10	10	10	20	4	3	3	2	6
Low income	0	x	x	0	x	0	x	x	0	x
Absent parenting	50	60	40	50	40	15	17	12	15	11
Ethnic origin	300	360	320	350	350	100	100	100	100	100
White	180	220	190	230	250	61	62	60	66	70
Mixed	30	30	40	30	40	9	9	11	9	10
Asian or Asian British	10	10	10	10	10	3	2	3	3	3
Black or Black British	80	90	70	70	50	26	25	23	19	14
Other Ethnic groups	x	10	10	10	10	x	3	3	3	2
Other ⁶	.	.	.	0	0	.	.	.	0	0
Placement	300	360	320	350	350	100	100	100	100	100
Foster placements	130	140	140	170	180	45	39	45	49	51
Placed for adoption	0	0	0	0	0	0	0	0	0	0
Placed with parents	20	20	30	20	10	7	5	9	6	4
Placed in the community	80	120	80	100	90	27	33	26	27	26
Secure units, children's homes and hostels	50	60	50	40	50	15	16	16	12	14
Other residential settings	20	20	10	10	10	5	6	2	4	3
Residential schools	0	0	0	0	x	0	0	0	0	x
Missing - Absent for more than 24 hours from agreed placement	x	10	x	x	x	x	1	x	x	x
Other placement	x	x	x	x	x	x	x	x	x	x
Region	300	360	320	350	350	100	100	100	100	100
North East	10	10	20	20	30	3	3	5	5	7
North West	40	40	40	40	40	14	12	13	13	12
Yorkshire and The Humber	40	40	40	40	40	12	12	12	12	11
East Midlands	20	30	20	20	20	5	8	8	6	7
West Midlands	20	30	30	30	30	8	8	8	7	8
East of England	20	30	20	30	30	7	7	6	7	7
Inner London	60	70	60	70	70	20	20	19	20	18
Outer London	50	50	50	40	50	15	15	15	11	13
South East	30	30	30	50	40	10	9	9	14	11
South West	20	20	20	20	20	7	6	5	4	6

Source: SSSA903

- Numbers have been rounded to the nearest 100 if they exceed 1000, and to the nearest 10, otherwise. Percentages have been rounded to the nearest whole number. See Technical Notes for more information on rounding.
- Figures exclude children looked after under an agreed series of short term placements.
- Historical data may differ from older publications. This is mainly due to the implementation of amendments and corrections sent by some local authorities after the publication date of previous materials.
- Data on the first child's date of birth started to be collected in 2005-06.
- The most applicable category of the eight "Need Codes" at the time the child started to be looked after rather than necessarily the entire reason they are looked after.
- Information refused or not available was collected for the first time in 2009.

x Figures not shown in order to protect confidentiality. See Technical Notes for information on data suppression.
 . Not applicable.

Table B1: Children looked after during the year under at least one agreed series of short term placements by gender, by age at the end of the latest period of care or at 31 March if child is still covered by an agreement, by placement, and by category of need^{1,2,3,4}
Years ending 31 March 2006 to 2010
Coverage: England

	numbers and percentages									
	numbers					percentages				
	2006	2007	2008	2009	2010	2006	2007	2008	2009	2010
All Children looked after during the year under at least one agreed series of short term placements	11,400	11,400	11,000	10,700	10,000	100	100	100	100	100
Gender	11,400	11,400	11,000	10,700	10,000	100	100	100	100	100
Male	7,400	7,300	7,200	7,000	6,500	65	64	65	65	65
Female	4,000	4,000	3,800	3,700	3,500	35	36	35	35	35
Age (years)⁵	11,400	11,400	11,000	10,700	10,000	100	100	100	100	100
Under 1	40	40	30	50	30	-	-	-	-	-
1 to 4	350	320	270	240	260	3	3	2	2	3
5 to 9	2,000	1,900	1,800	1,600	1,400	18	16	16	15	14
10 to 15	6,300	6,300	6,100	5,900	5,400	56	55	55	55	54
16 and over	2,700	2,800	2,900	2,900	2,900	23	25	26	27	29
Average age (yrs : months)	12:8	12:11	13:1	13:2	13:4					
Placement⁶	11,400	11,400	11,000	10,700	10,000	100	100	100	100	100
Foster placements	4,600	4,300	4,000	3,600	3,300	40	38	36	34	33
Placed for adoption	0	0	0	0	0	0	0	0	0	0
Placement with parents	110	90	110	100	100	1	1	1	1	1
Other placement in the community	10	0	x	x	10	-	0	x	x	-
Secure units, children's homes and hostels	5,800	6,000	5,800	5,800	5,500	51	52	53	55	55
Other residential settings	590	740	850	830	840	5	6	8	8	8
Residential schools	170	190	230	250	240	1	2	2	2	2
Missing - Absent for more than 24 hours from agreed placement	0	0	0	0	x	0	0	0	0	x
Other placement	110	100	20	30	40	1	1	-	-	-
Category of need^{6,7}	11,400	11,400	11,000	10,700	10,000	100	100	100	100	100
Abuse or neglect	550	580	550	560	580	5	5	5	5	6
Child's disability	9,000	9,100	8,900	8,800	8,300	80	80	81	82	82
Parents illness or disability	340	290	240	200	170	3	3	2	2	2
Family in acute stress	790	740	770	660	550	7	7	7	6	5
Family dysfunction	460	450	410	400	380	4	4	4	4	4
Socially unacceptable behaviour	110	90	50	60	60	1	1	-	1	1
Low income	10	10	10	10	10	-	-	-	-	-
Absent parenting	70	60	70	20	30	1	1	1	-	-

Source: SSDA903

- Numbers have been rounded to the nearest 100 if they exceed 1000, and to the nearest 10, otherwise. Percentages have been rounded to the nearest whole number. See Technical Notes for more information on rounding.
 - Children looked after at any time during the year.
 - Historical data may differ from older publications. This is mainly due to the implementation of amendments and corrections sent by some local authorities after the publication date of previous materials.
 - Children looked after under one or more agreed series of short term placements at any time during the years ending 31 March. Some will also have been looked after under other legal statuses during the year, and will therefore be included in other tables.
 - Age at the end of the latest episode of care, or at 31 March if child is still covered by an agreement.
 - Placement and category of need relate to child's latest episode of care during the year.
 - The most applicable category of the eight "Need Codes" at the time the child started to be looked after rather than necessarily the entire reason they are looked after.
- x Figures not shown in order to protect confidentiality. See Technical Notes for information on data suppression.
- Negligible. Percentage below 0.5%

Table C1: Children who started to be looked after during the years ending 31 March by gender, age on starting, category of need and ethnic origin^{1,2,3,4}
Years ending 31 March 2006 to 2010
Coverage: England

	numbers and percentages									
	numbers					percentages				
	2006	2007	2008	2009	2010	2006	2007	2008	2009	2010
All children who started to be looked after	24,600	24,000	23,300	25,700	27,800	100	100	100	100	100
Gender	24,600	24,000	23,300	25,700	27,800	100	100	100	100	100
Male	13,300	13,200	12,800	14,500	14,900	54	55	55	56	53
Female	11,300	10,800	10,500	11,200	13,000	46	45	45	44	47
Age on starting (years)	24,600	24,000	23,300	25,700	27,800	100	100	100	100	100
Under 1	4,300	4,400	4,400	4,800	5,300	18	18	19	19	19
1 to 4	4,300	4,400	4,300	4,900	5,600	17	18	19	19	20
5 to 9	4,100	3,900	3,500	4,100	4,500	16	16	15	16	16
10 to 15	9,800	9,300	8,700	9,200	9,300	40	39	38	36	33
16 and over	2,100	2,000	2,300	2,800	3,200	9	8	10	11	12
Category of need⁵	24,600	24,000	23,300	25,700	27,800	100	100	100	100	100
Abuse or neglect	11,500	11,400	11,300	12,700	14,500	47	48	48	49	52
Child's disability	830	740	690	690	700	3	3	3	3	3
Parents illness or disability	1,500	1,300	1,200	1,200	1,200	6	5	5	5	4
Family in acute stress	2,800	2,800	2,700	2,800	3,100	11	12	12	11	11
Family dysfunction	3,200	3,300	3,100	3,700	4,600	13	14	13	14	17
Socially unacceptable behaviour	1,300	1,200	1,100	1,100	1,100	5	5	5	4	4
Low income	70	80	60	70	110	-	-	-	-	-
Absent parenting	3,400	3,100	3,200	3,500	2,500	14	13	14	14	9
Ethnic origin	24,600	24,000	23,300	25,700	27,800	100	100	100	100	100
White	17,500	17,100	16,300	17,300	19,400	71	71	70	67	70
White British	16,600	16,100	15,300	16,400	18,300	67	67	66	64	66
White Irish	150	140	130	120	130	1	1	1	-	-
Traveller of Irish Heritage ⁶	.	.	.	20	20	.	.	.	-	-
Gypsy/Roma ⁶	.	.	.	30	60	.	.	.	-	-
Any other White background	790	850	860	730	850	3	4	4	3	3
Mixed	1,900	1,900	1,800	2,000	2,200	8	8	8	8	8
White and Black Caribbean	690	630	600	620	730	3	3	3	2	3
White and Black African	200	190	190	220	270	1	1	1	1	1
White and Asian	280	310	260	310	340	1	1	1	1	1
Any other mixed background	780	730	770	820	830	3	3	3	3	3
Asian or Asian British	1,400	1,500	1,700	2,100	1,900	6	6	7	8	7
Indian	160	140	170	170	180	1	1	1	1	1
Pakistani	300	340	320	410	490	1	1	1	2	2
Bangladeshi	160	170	210	240	300	1	1	1	1	1
Any other Asian background	820	820	1,000	1,300	980	3	3	4	5	4
Black or Black British	2,800	2,500	2,400	2,500	2,600	11	11	10	10	9
Caribbean	720	630	620	650	760	3	3	3	3	3
African	1,700	1,500	1,300	1,400	1,400	7	6	6	6	5
Any other Black background	440	430	440	430	490	2	2	2	2	2
Other ethnic groups	900	1,100	1,100	1,500	1,200	4	4	5	6	4
Chinese	120	170	140	130	110	-	1	1	1	-
Any other ethnic group	780	890	960	1,400	1,100	3	4	4	5	4
Other	.	.	.	280	550	.	.	.	1	2
Refused ⁶	.	.	.	30	30	.	.	.	-	-
Information not yet available ⁶	.	.	.	250	520	.	.	.	1	2

Source: SSSDA 903

1. Numbers have been rounded to the nearest 100 if they exceed 1000, and to the nearest 10, otherwise. Percentages have been rounded to the nearest whole number. See Technical Notes for more information on rounding.
2. Only the first occasion on which a child started to be looked after in the year has been counted.
3. Historical data may differ from older publications. This is mainly due to the implementation of amendments and corrections sent by some local authorities after the publication date of previous materials.
4. Figures exclude children looked after under an agreed series of short term placements.
5. The most applicable category of the eight "Need Codes" at the time the child started to be looked after rather than necessarily the entire reason they are looked after.
6. Ethnic origin classification collected for the first time in 2009.

. Not applicable.

- Negligible. Percentage below 0.5%

Table C2: Children who started to be looked after during the years ending 31 March by legal status on starting^{1,2,3,4}
Years ending 31 March 2006 to 2010
Coverage: England

Legal Status on starting	numbers and percentages									
	numbers					percentages				
	2006	2007	2008	2009	2010	2006	2007	2008	2009	2010
All children who started to be looked after	24,600	24,000	23,300	25,700	27,800	100	100	100	100	100
Care Order	4,300	4,800	4,400	4,400	5,400	17	20	19	17	19
Interim care order	4,200	4,600	4,300	4,300	5,200	17	19	18	17	19
Full care order	140	150	160	140	150	1	1	1	1	1
Freed for adoption⁵	10	0	0	0	0	-	0	0	0	0
Placement Order granted⁶	x	10	10	20	10	x	-	-	-	-
Voluntary agreement under S20 CA 1989 (single placements)	16,200	15,600	15,100	16,900	17,800	66	65	65	66	64
Detained for child protection	3,400	2,900	3,000	3,800	4,100	14	12	13	15	15
Police protection	2,200	2,200	2,400	3,000	3,400	9	9	10	12	12
Emergency protection order	1,200	720	580	750	740	5	3	3	3	3
Under child assessment order	10	10	x	x	x	-	-	x	x	x
Youth Justice legal statuses	660	690	690	550	500	3	3	3	2	2
On remand or committed for trial	610	660	640	520	480	2	3	3	2	2
Detained under PACE ⁷	30	20	30	20	10	-	-	-	-	-
Supervision order	20	10	20	10	10	-	-	-	-	-

Source: SSDA 903

1. Numbers have been rounded to the nearest 100 if they exceed 1000, and to the nearest 10, otherwise. Percentages have been rounded to the nearest whole number. See Technical Notes for more information on rounding.
 2. Figures exclude children looked after under an agreed series of short term placements.
 3. Historical data may differ from older publications. This is mainly due to the implementation of amendments and corrections sent by some local authorities after the publication date of previous materials.
 4. Only the first occasion on which a child started to be looked after in the year has been counted.
 5. No new applications for freeing orders may be made on or after 30 December 2005.
 6. Placement orders came into force on 30 December 2005.
 7. Children detained in local authority accommodation under section 38(6) of the Police and Criminal Evidence Act 1984.
- x Figures not shown in order to protect confidentiality. See Technical Notes for information on data suppression.
- Negligible. Percentage below 0.5%

Table C3: Children who started to be looked after during the years ending 31 March by placement on starting ^{1,2,3,4}
Years ending 31 March 2006 to 2010
Coverage: England

Placement on starting	numbers and percentages									
	numbers					percentages				
	2006	2007	2008	2009	2010	2006	2007	2008	2009	2010
All Children who started to be looked after	24,600	24,000	23,300	25,700	27,800	100	100	100	100	100
Foster placements	17,900	17,800	17,500	19,400	21,300	73	74	75	76	76
Foster placement inside LA boundary										
With relative or friend	1,500	1,400	1,400	1,600	2,000	6	6	6	6	7
With other foster carer provided by LA	11,000	10,800	10,300	10,700	10,800	45	45	44	42	39
arranged through agency ⁵	930	1,100	1,300	1,600	1,900	4	5	5	6	7
Foster placements outside LA boundary										
With relative or friend	450	360	420	510	620	2	2	2	2	2
With other foster carer provided by LA	2,200	2,100	2,100	2,400	2,900	9	9	9	9	10
arranged through agency ⁵	1,800	2,000	1,900	2,600	3,100	7	8	8	10	11
Placed for adoption⁶	320	270	200	200	120	1	1	1	1	-
Placed for adoption with consent with current foster carer (under S19 AA 2002)		10	10	10	x		-	-	-	x
Placed for adoption with placement order with current foster carer (under S21 AA 2002)	20	20	10	10	10		-	-	-	-
Placed for adoption with consent not with current foster carer (under S19 AA 2002)		90	80	50	40		-	-	-	-
Placed for adoption with placement order not with current foster carer (under S21 AA 2002)	300	140	100	130	70	1	1	-	1	-
Placement with parents	1,400	1,400	1,100	1,100	1,200	6	6	5	4	4
Other placements in the community	790	790	870	1,200	1,200	3	3	4	5	4
Living independently	790	790	870	1,200	1,200	3	3	4	5	4
Residential employment	0	0	0	x	10	0	0	0	x	-
Secure units, homes and hostels	3,400	3,100	3,000	3,000	3,100	14	13	13	12	11
Secure unit inside LA boundary	50	40	40	50	40	-	-	-	-	-
Secure unit outside LA boundary ⁷	200	230	210	180	210	1	1	1	1	1
Homes and hostels subject to Children's Homes regulations										
inside LA boundary	2,000	1,800	1,600	1,600	1,400	8	7	7	6	5
outside LA boundary	620	570	530	650	730	3	2	2	3	3
Homes and hostels not subject to Children's Homes regulations	610	530	560	560	660	2	2	2	2	2
Other residential settings	290	300	280	420	540	1	1	1	2	2
Residential care homes	100	80	100	160	240	-	-	-	1	1
NHS Trust providing medical/nursing care	60	40	50	70	70	-	-	-	-	-
Family centre or mother and baby unit	100	130	90	150	180	-	1	-	1	1
Youth Treatment Centres	0	0	0	0	0	0	0	0	0	0
Young offenders institution or prison	30	50	50	50	60	-	-	-	-	-
Residential Schools	220	180	210	200	210	1	1	1	1	1
Missing - Absent for more than 24 hours from agreed placement	140	110	130	120	90	1	-	1	-	-
In refuge (S51 CA 1989)	x	0	0	x	x	x	0	0	x	x
Whereabouts known (not in refuge)	20	10	20	10	10	-	-	-	-	-
Whereabouts unknown	130	100	120	100	80	1	-	1	-	-
Other placement	100	60	50	80	90	-	-	-	-	-

Source: SSDA 903

1. Numbers have been rounded to the nearest 100 if they exceed 1000, and to the nearest 10, otherwise. Percentages have been rounded to the nearest whole number. See Technical Notes for more information on rounding.

2. Only the first occasion on which a child started to be looked after in the year has been counted.

3. Historical data may differ from older publications. This is mainly due to the implementation of amendments and corrections sent by some local authorities after the publication date of previous materials.

4. Figures exclude children looked after under an agreed series of short term placements.

5. This category includes new placement provider codes "Other Local Authority provision", "private provision" and "voluntary/third sector provision" for 2009 & 2010 only.

6. Since 2004-05 placed for adoption has been disaggregated by whether the placement is or is not with current foster carer. Since 2006-07 placement also disaggregated according to whether consent was given or a placement order sought.

7. There are currently only 16 secure units operating in England therefore most placements will inevitably be outside the council boundary.

x Figures not shown in order to protect confidentiality. See Technical Notes for information on data suppression.

- Negligible. Percentage below 0.5%

Table C4: Children who were taken into care during the years ending 31 March by gender, age on starting, category of need and ethnic origin^{1,2,3,4}
Years ending 31 March 2006 to 2010
Coverage: England

	numbers and percentages									
	numbers					percentages				
	2006	2007	2008	2009	2010	2006	2007	2008	2009	2010
All children who were taken into care²	7,700	7,700	7,400	8,200	9,500	100	100	100	100	100
Gender	7,700	7,700	7,400	8,200	9,500	100	100	100	100	100
Male	3,900	3,900	3,700	4,100	4,700	51	50	50	51	49
Female	3,800	3,900	3,700	4,000	4,800	49	50	50	49	51
Age on starting (years)	7,700	7,700	7,400	8,200	9,500	100	100	100	100	100
Under 1	2,100	2,100	2,100	2,200	2,500	27	28	28	27	27
1 to 4	2,100	2,100	2,200	2,300	2,700	27	28	29	28	29
5 to 9	1,800	1,800	1,600	1,900	2,100	23	24	22	23	22
10 to 15	1,700	1,500	1,500	1,700	2,000	22	20	20	20	21
16 and over	50	60	70	80	100	1	1	1	1	1
Category of need⁵	7,700	7,700	7,400	8,200	9,500	100	100	100	100	100
Abuse or neglect	5,700	5,700	5,500	6,000	6,800	74	74	74	74	72
Child's disability	70	70	50	60	70	1	1	1	1	1
Parents illness or disability	320	290	270	310	330	4	4	4	4	3
Family in acute stress	470	500	480	570	700	6	6	6	7	7
Family dysfunction	800	870	880	970	1,300	10	11	12	12	13
Socially unacceptable behaviour	100	80	90	90	110	1	1	1	1	1
Low income	20	20	10	20	20	-	-	-	-	-
Absent parenting	240	160	160	130	140	3	2	2	2	2
Ethnic origin	7,700	7,700	7,400	8,200	9,500	100	100	100	100	100
White	5,900	5,800	5,600	5,900	6,800	76	75	75	72	72
White British	5,600	5,500	5,300	5,600	6,400	73	71	71	68	68
White Irish	70	60	70	40	50	1	1	1	-	1
Traveller of Irish Heritage ⁶	.	.	.	10	10	.	.	.	-	-
Gypsy/Roma ⁶	.	.	.	10	40	.	.	.	-	-
Any other White background	220	230	220	250	320	3	3	3	3	3
Mixed	730	760	680	780	860	9	10	9	10	9
White and Black Caribbean	270	250	220	230	290	3	3	3	3	3
White and Black African	70	80	70	90	100	1	1	1	1	1
White and Asian	90	120	100	150	140	1	2	1	2	1
Any other mixed background	300	310	280	310	330	4	4	4	4	3
Asian or Asian British	320	320	370	450	530	4	4	5	5	6
Indian	50	40	50	60	70	1	1	1	1	1
Pakistani	120	140	120	170	200	2	2	2	2	2
Bangladeshi	80	80	80	120	150	1	1	1	1	2
Any other Asian background	70	60	110	100	100	1	1	1	1	1
Black or Black British	660	700	650	820	850	9	9	9	10	9
Caribbean	220	220	210	200	260	3	3	3	2	3
African	320	350	310	490	430	4	4	4	6	5
Any other Black background	120	140	130	130	160	2	2	2	2	2
Other ethnic groups	120	130	140	150	200	2	2	2	2	2
Chinese	10	20	10	20	30	-	-	-	-	-
Any other ethnic group	110	110	140	130	170	1	1	2	2	2
Other	.	.	.	100	190	.	.	.	1	2
Refused ⁶	.	.	.	10	10	.	.	.	-	-
Information not yet available ⁵	.	.	.	80	180	.	.	.	1	2

Source: SSSA 903

1. Numbers have been rounded to the nearest 100 if they exceed 1000, and to the nearest 10, otherwise. Percentages have been rounded to the nearest whole number. See Technical Notes for more information on rounding.
2. Children who were taken into care are children who started to be looked after under a care order, police protection, emergency protection orders and under child assessment order.
3. Historical data may differ from older publications. This is mainly due to the implementation of amendments and corrections sent by some local authorities after the publication date of previous materials.
4. Only the first occasion on which a child was taken into care in the year has been counted.
5. It is the most applicable category of the eight "Need Codes" at the time the child started to be looked after rather than necessarily the entire reason they are looked after.
6. Ethnic origin classification collected for the first time in 2009.
7. Children who were taken into care are children who started to be looked after under a care order, detained on child protection

- . Not applicable.
- Negligible. Percentage below 0.5%

Table D1: Children who ceased to be looked after during the years ending 31 March by gender, age on ceasing, reason episode ceased category of need and ethnic origin^{1,2,3,4}
Years ending 31 March 2006 to 2010
Coverage: England

	numbers and percentages									
	numbers					percentages				
	2006	2007	2008	2009	2010	2006	2007	2008	2009	2010
All looked after children who ceased to be looked after	25,900	25,000	24,500	25,000	25,100	100	100	100	100	100
Gender	25,900	25,000	24,500	25,000	25,100	100	100	100	100	100
Male	14,000	13,600	13,100	13,700	13,700	54	54	54	55	55
Female	11,900	11,400	11,300	11,300	11,400	46	46	46	45	45
Age on ceasing (years)	25,900	25,000	24,500	25,000	25,100	100	100	100	100	100
Under 1	1,400	1,300	1,300	1,300	1,300	5	5	5	5	5
1 to 4	5,500	5,400	5,500	5,900	5,900	21	21	23	24	23
5 to 9	3,800	3,600	3,200	3,300	3,400	15	14	13	13	14
10 to 15	6,900	6,500	5,900	5,600	5,400	27	26	24	23	22
16 and over	8,200	8,200	8,500	8,800	9,100	32	33	35	35	36
Reason episode ceased	25,900	25,000	24,500	25,000	25,100	100	100	100	100	100
Adopted - application unopposed ⁵	3,700	1,700	1,700	1,800	1,700	14	7	7	7	7
Adopted - consent dispensed with ⁵	1,600	1,600	1,500	1,500	1,500	6	6	6	6	6
Died	60	70	50	50	50	-	-	-	-	-
Care taken by another LA	240	240	190	170	170	1	1	1	1	1
Returned home to live with parents or relatives	11,000	10,200	9,500	9,500	9,800	42	41	39	38	39
Residence order granted	930	1,000	910	930	1,000	4	4	4	4	4
Special guardianship order made to former foster carers ⁶	70	500	770	810	840	-	2	3	3	3
Special guardianship order made to carers other than former foster carers ⁶	260	360	430	420	420	-	1	1	2	2
Moved into independent living (with supportive accommodation)	2,400	2,400	2,500	2,200	2,300	9	10	10	9	9
Moved into independent living (with no formalised support)	960	940	1,000	1,000	1,000	4	4	4	4	4
Transferred to residential care funded by adult social services	470	500	480	530	470	2	2	2	2	2
Sentenced to custody ⁷	.	250	360	350	310	.	1	1	1	1
Care ceased for any other reason	6,100	5,300	5,200	5,700	5,500	24	21	21	23	22
Category of need⁸	25,900	25,000	24,500	25,000	25,100	100	100	100	100	100
Abuse or neglect	12,400	12,000	12,100	12,700	12,800	48	48	50	51	51
Child's disability	850	800	710	770	760	3	3	3	3	3
Parents illness or disability	1,700	1,600	1,400	1,300	1,100	6	6	6	5	5
Family in acute stress	2,800	2,600	2,600	2,500	2,800	11	11	11	10	11
Family dysfunction	3,300	3,300	3,200	3,300	3,600	13	13	13	13	14
Socially unacceptable behaviour	1,500	1,300	1,200	1,100	1,000	6	5	5	4	4
Low income	70	80	50	70	70	-	-	-	-	-
Absent parenting	3,300	3,300	3,100	3,300	3,000	13	13	13	13	12
Ethnic origin	25,900	25,000	24,500	25,000	25,100	100	100	100	100	100
White	19,100	18,100	17,500	17,300	17,300	74	72	71	69	69
White British	17,900	17,000	16,500	16,300	16,300	69	68	67	65	65
White Irish	200	180	130	150	140	1	1	1	1	1
Traveller of Irish Heritage ⁹	.	.	.	10	10
Gypsy/Roma ⁹	.	.	.	10	40
Any other White background	980	940	850	830	810	4	4	3	3	3
Mixed	2,000	1,900	2,000	2,000	2,000	8	7	8	8	8
White and Black Caribbean	730	620	670	690	690	3	2	3	3	3
White and Black African	200	180	190	230	240	1	1	1	1	1
White and Asian	270	290	300	340	270	1	1	1	1	1
Any other mixed background	810	760	810	740	810	3	3	3	3	3
Asian or Asian British	1,100	1,300	1,400	1,800	1,800	4	5	6	7	7
Indian	150	150	160	180	160	1	1	1	1	1
Pakistani	270	310	310	410	430	1	1	1	2	2
Bangladeshi	150	170	180	210	250	1	1	1	1	1
Any other Asian background	580	680	760	1,000	920	2	3	3	4	4
Black or Black British	2,800	2,800	2,700	2,700	2,500	11	11	11	11	10
Caribbean	730	670	700	720	710	3	3	3	3	3
African	1,600	1,600	1,500	1,500	1,400	6	6	6	6	6
Any other Black background	480	480	480	430	420	2	2	2	2	2
Other Ethnic groups	790	970	940	1,100	1,200	3	4	4	5	5
Chinese	120	160	130	120	120	-	1	1	-	-
Any other ethnic group	670	810	800	1,000	1,100	3	3	3	4	4
Other	.	.	.	130	270	.	.	.	1	1
Refused ⁹	.	.	.	10	20	.	.	.	-	-
Information not yet available ⁹	.	.	.	120	250	.	.	.	-	1

Source: SSDA 903

- Numbers have been rounded to the nearest 100 if they exceed 1000, and to the nearest 10, otherwise. Percentages have been rounded to the nearest whole number. See Technical Notes for more information on rounding.
- Only the last occasion on which a child ceased to be looked after in the year has been counted.
- Figures exclude children looked after under an agreed series of short term placements.
- Historical data may differ from older publications. This is mainly due to the implementation of amendments and corrections sent by some local authorities after the publication date of previous materials.
- Prior to 2006-07, the number of children looked after who were adopted could not be disaggregated.
- In 2005-06 the number of children who ceased to be looked after due to the granting of a special guardianship order could not be disaggregated.
- 'Sentenced to custody' was first collected in 2007.
- The most applicable category of the eight "Need Codes" at the time the child started to be looked after rather than necessarily the entire reason they are looked after.
- Ethnic origin classification collected for the first time in 2009.

- . Not applicable.
- Negligible. Percentage below 0.5%

Table D2: Children who ceased to be looked after during the years ending 31 March by placement on ceasing^{1,2,3,4}
Years ending 31 March 2006 to 2010
Coverage: England

Placement on ceasing	numbers and percentages									
	numbers					percentages				
	2006	2007	2008	2009	2010	2006	2007	2008	2009	2010
All looked after children who ceased to be looked after	25,900	25,000	24,500	25,000	25,100	100	100	100	100	100
Foster placements	13,000	12,800	12,700	13,100	13,500	50	51	52	52	54
Foster placement inside Council boundary										
With relative or friend	1,600	1,500	1,600	1,700	1,800	6	6	6	7	7
With other foster carer provided by Council	7,800	7,300	7,000	6,900	6,600	30	29	28	28	26
arranged through agency ⁵	490	630	750	780	970	2	3	3	3	4
Foster placements outside LA boundary										
With relative or friend	550	580	550	580	660	2	2	2	2	3
With other foster carer provided by Council	1,400	1,400	1,500	1,600	1,800	5	6	6	6	7
arranged through agency ⁵	1,100	1,300	1,400	1,500	1,800	4	5	6	6	7
Placed for adoption⁶	3,700	3,300	3,100	3,300	3,200	14	13	13	13	13
Placed for adoption with consent with current foster carer (under S19 AA 2002)		220	160	160	70		1	1	1	-
Placed for adoption with placement order with current foster carer (under S21 AA 2002)	410	210	250	280	280	2	1	1	1	1
Placed for adoption with consent not with current foster carer (under S19 AA 2002)	3,300	1,200	740	690	320	13	5	3	3	1
Placed for adoption with placement order not with current foster carer (under S21 AA 2002)		1,700	2,000	2,200	2,500		7	8	9	10
Placement with parents	2,600	2,600	2,500	2,200	1,900	10	10	10	9	8
Other placements in the community	1,700	1,900	1,900	2,200	2,400	7	8	8	9	10
Living independently	1,700	1,900	1,900	2,200	2,400	7	8	8	9	10
Residential employment	10	x	x	x	x	-	x	x	x	x
Secure units, children's homes and hostels	4,000	3,600	3,400	3,300	3,100	15	14	14	13	12
Secure unit inside Council boundary	50	30	40	50	40	-	-	-	-	-
Secure unit outside Council boundary ⁷	220	230	210	180	180	1	1	1	1	1
Homes and hostels subject to Children's Homes regulations										
inside Council boundary	2,000	1,700	1,500	1,500	1,400	8	7	6	6	5
outside Council boundary	650	630	620	610	650	3	3	3	2	3
Homes and hostels not subject to Children's Homes regulations	1,100	1,000	980	950	900	4	4	4	4	4
Other residential settings	310	310	340	360	430	1	1	1	1	2
Residential care homes	80	80	90	100	160	-	-	-	-	1
NHS Trust providing medical/nursing care	70	50	50	60	50	-	-	-	-	-
Family centre or mother and baby unit	70	60	60	60	70	-	-	-	-	-
Young offenders institution or prison	90	120	130	140	150	-	-	1	1	1
Residential schools	230	270	220	260	250	1	1	1	1	1
Missing - Absent for more than 24 hours from agreed placement	210	180	200	170	150	1	1	1	1	1
In refuge (S51 CA 1989)	0	0	0	x	x	0	0	0	x	x
Whereabouts known (not in refuge)	30	30	40	40	30	-	-	-	-	-
Whereabouts unknown	180	150	160	130	120	1	1	1	1	-
Other placement	140	90	90	90	100	1	-	-	-	-

Source: SSDA 903

1. Numbers have been rounded to the nearest 100 if they exceed 1000, and to the nearest 10, otherwise. Percentages have been rounded to the nearest whole number. See Technical Notes for more information on rounding.
 2. Only the last occasion on which a child ceased to be looked after in the year has been counted.
 3. Figures exclude children looked after under an agreed series of short term placements.
 4. Historical data may differ from older publications. This is mainly due to the implementation of amendments and corrections sent by some local authorities after the publication date of previous materials.
 5. This category includes new placement provider codes "Other Local Authority provision", "private provision" and "voluntary/third sector provision" for 2009 & 2010
 6. Since 2004-05 placed for adoption has been disaggregated by whether the placement is or is not with current foster carer. Since 2006-07 placements were also disaggregated according to whether consent was given or a placement order sought.
 7. There are currently only 16 secure units operating in England therefore most placements will inevitably be outside the council boundary.
- x Figures not shown in order to protect confidentiality. See Technical Notes for information on data suppression.
- Negligible. Percentage below 0.5%

Table E1: Looked after children who were adopted during the years ending 31 March by gender, age at adoption, ethnic origin, category of need, final legal status, duration of final period of care and age on starting final period of care^{1,2}

Years ending 31 March 2006 to 2010

Coverage: England

	numbers and percentages									
	numbers					percentages				
	2006	2007	2008	2009	2010	2006	2007	2008	2009	2010
All looked after children	60,300	60,000	59,400	60,900	64,400					
All looked after children who were adopted during the year ending 31 March	3,700	3,300	3,200	3,300	3,200	100	100	100	100	100
Gender	3,700	3,300	3,200	3,300	3,200	100	100	100	100	100
Male	1,900	1,700	1,600	1,700	1,600	51	50	51	51	51
Female	1,800	1,700	1,500	1,600	1,500	49	50	49	49	49
Age at adoption (years)	3,700	3,300	3,200	3,300	3,200	100	100	100	100	100
Under 1	200	150	110	80	70	5	4	4	3	2
1 to 4	2,400	2,100	2,200	2,400	2,200	64	64	70	72	70
5 to 9	950	880	690	770	770	26	26	22	23	24
10 to 15	180	150	120	80	100	5	5	4	3	3
16 and over	20	10	20	10	10	-	-	1	-	-
Average age (yrs : months)	4:1	4:2	3:11	3:9	3:11					
Ethnic origin	3,700	3,300	3,200	3,300	3,200	100	100	100	100	100
White	3,200	2,800	2,600	2,700	2,700	85	85	83	82	83
Mixed	370	340	330	410	350	10	10	10	12	11
Asian or Asian British	50	50	60	70	50	1	2	2	2	2
Black or Black British	90	90	110	90	90	2	3	4	3	3
Other ethnic groups	30	30	20	20	20	1	1	1	1	1
Other ³	.	.	.	x	10	.	.	.	x	-
Category of need⁴	3,700	3,300	3,200	3,300	3,200	100	100	100	100	100
Abuse or neglect	2,700	2,500	2,300	2,400	2,200	74	74	73	73	70
Child's disability	20	20	20	20	20	1	1	1	1	1
Parents illness or disability	180	160	170	130	120	5	5	5	4	4
Family in acute stress	230	170	220	260	270	6	5	7	8	9
Family dysfunction	310	310	310	350	370	8	9	10	11	12
Socially unacceptable behaviour	10	10	x	10	10	-	-	x	-	-
Low income	10	10	x	x	x	-	-	x	x	x
Absent parenting	190	190	140	140	140	5	6	4	4	5
Final legal status	3,700	3,300	3,200	3,300	3,200	100	100	100	100	100
Freed for adoption ⁵	1,900	1,200	290	100	30	51	37	9	3	1
Placement Order ⁶	20	650	2,000	2,700	2,600	-	19	63	80	82
Care order	1,500	1,200	670	340	350	41	36	21	10	11
Voluntary agreement (S20)	280	230	220	200	180	8	7	7	6	6
Duration of final period of care⁷	3,700	3,300	3,200	3,300	3,200	100	100	100	100	100
Under 1 year	240	180	140	100	80	6	5	4	3	2
1 year to under 2 years	1,400	1,200	1,200	1,200	1,200	38	36	39	37	36
2 years to under 3 years	1,100	980	1,100	1,200	1,200	30	29	34	35	37
3 years and over	950	970	740	800	780	26	29	23	24	24
Average duration (yrs : mths)	2:7	2:8	2:7	2:6	2:7					
Age on starting final period of care (years)⁷	3,700	3,300	3,200	3,300	3,200	100	100	100	100	100
Under 1	2,100	1,900	2,000	2,100	2,000	57	58	62	62	61
1	470	370	380	400	360	13	11	12	12	11
2	340	360	300	330	300	9	11	9	10	9
3	270	260	200	230	240	7	8	6	7	8
4 and over	510	420	340	300	330	14	13	11	9	10
Average age (yrs : mths)	1:7	1:6	1:4	1:3	1:4					

Source: SSDA 903

1. Numbers have been rounded to the nearest 100 if they exceed 1000, and to the nearest 10, otherwise. Percentages have been rounded to the nearest whole number. See Technical Notes for more information on rounding.
2. Historical data may differ from older publications. This is mainly due to the implementation of amendments and corrections sent by some local authorities after the publication date of previous materials.
3. Information refused or not available was collected for the first time in 2009.
4. The most applicable category of the eight "Need Codes" at the time the child started to be looked after rather than necessarily the entire reason they are looked after.
5. No new applications for freeing orders may be made on or after 30 December 2005.
6. Placement orders came into force on 30 December 2005.
7. "Period of care" refers to a continuous period of being looked after, which may include more than one placement or legal status.

x Figures not shown in order to protect confidentiality. See Technical Notes for information on data suppression.

. Not applicable.

- Negligible. Percentage below 0.5%

Table E2: Looked after children who were adopted during the years ending 31 March by number of adopters, legal status of adopters and by gender of adopters^{1,2}

Years ending 31 March 2007 to 2010

Coverage: England

	numbers and percentages							
	numbers				percentages			
	2007	2008	2009	2010	2007	2008	2009	2010
All looked after children who were adopted during the year ending 31 March	3,300	3,200	3,300	3,200	100	100	100	100
Number of adopters	3,300	3,200	3,300	3,200	100	100	100	100
1 person	290	270	270	280	9	9	8	9
2 persons	3,000	2,900	3,000	2,900	91	91	92	91
Legal status and gender of adopters	3,300	3,200	3,300	3,200	100	100	100	100
Single adopter	290	270	270	280	9	9	8	9
Single male adopter	20	10	10	20	1	-	-	1
Single female adopter	280	260	260	260	8	8	8	8
Same sex couple not in civil partnership	70	50	50	60	2	2	1	2
Adopting couple are both male	20	20	20	30	-	1	1	1
Adopting couple are both female	60	30	30	30	2	1	1	1
Different sex unmarried couple	150	140	190	180	4	5	6	6
Civil partnership couple	20	30	70	60	1	1	2	2
Adopting couple are both male	10	x	40	30	-	x	1	1
Adopting couple are both female	10	20	40	30	-	1	1	1
Married couple	2,800	2,700	2,700	2,600	84	84	82	82

Source: SSDA 903

1. Numbers have been rounded to the nearest 100 if they exceed 1000, and to the nearest 10, otherwise. Percentages have been rounded to the nearest whole number. See Technical Notes for more information on rounding.

2. Historical data may differ from older publications. This is mainly due to the implementation of amendments and corrections sent by some local authorities after the publication date of previous materials.

x Figures not shown in order to protect confidentiality. See Technical Notes for information on data suppression.

- Negligible. Percentage below 0.5%

Table F1: Children aged 16 years and over who ceased to be looked after during the years ending 31 March by gender, age on ceasing, ethnic origin and final placement^{1,2,3,4}
Years ending 31 March 2006 to 2010
Coverage: England

	numbers and percentages									
	numbers					percentages				
	2006	2007	2008	2009	2010	2006	2007	2008	2009	2010
All Children aged 16 years and over who ceased to be looked after	8,200	8,200	8,500	8,800	9,100	100	100	100	100	100
Gender	8,200	8,200	8,500	8,800	9,100	100	100	100	100	100
Male	4,800	4,700	4,900	5,300	5,500	58	58	57	61	61
Female	3,500	3,500	3,600	3,400	3,600	42	42	43	39	39
Age on ceasing (years)	8,200	8,200	8,500	8,800	9,100	100	100	100	100	100
16	2,300	2,100	2,000	1,900	1,900	27	26	24	22	21
17	1,500	1,400	1,300	1,500	1,500	18	17	16	17	16
18th birthday	4,400	4,600	5,000	5,300	5,700	53	57	59	60	62
Older than 18th birthday	80	40	70	60	50	1	1	1	1	1
Ethnic origin	8,200	8,200	8,500	8,800	9,100	100	100	100	100	100
White	5,600	5,400	5,600	5,500	5,800	68	66	66	62	64
White British	5,100	4,900	5,200	5,100	5,500	62	60	62	58	60
White Irish	70	50	40	50	50	1	1	1	1	1
Traveller of Irish heritage ^b	.	.	.	x	x	.	.	.	x	x
Gypsy/Roma ^b	.	.	.	0	0	.	.	.	0	0
Any other White background	490	420	350	350	290	6	5	4	4	3
Mixed	470	440	480	490	530	6	5	6	6	6
White and Black Caribbean	170	150	200	200	210	2	2	2	2	2
White and Black African	40	40	30	40	40	-	-	-	-	-
White and Asian	50	50	70	80	70	1	1	1	1	1
Any other mixed background	200	200	180	170	210	2	2	2	2	2
Asian or Asian British	500	590	660	930	920	6	7	8	11	10
Indian	50	50	70	60	50	1	1	1	1	1
Pakistani	60	90	80	120	140	1	1	1	1	1
Bangladeshi	30	30	30	50	70	-	-	-	1	1
Any other Asian background	360	420	480	710	670	4	5	6	8	7
Black or Black British	1,200	1,200	1,100	1,100	960	15	14	13	12	11
Caribbean	240	200	210	220	240	3	2	3	3	3
African	800	810	760	720	580	10	10	9	8	6
Any other Black background	160	170	140	120	130	2	2	2	1	1
Other Ethnic groups	440	570	580	770	840	5	7	7	9	9
Chinese	80	120	100	90	80	1	1	1	1	1
Any other ethnic group	360	450	480	680	770	4	5	6	8	8
Other	.	.	.	30	40
Refused ⁵	.	.	.	0	10	.	.	.	0	-
Information not yet available ⁵	.	.	.	30	40	.	.	.	-	-
Final placement	8,200	8,200	8,500	8,800	9,100	100	100	100	100	100
Foster placements	3,000	3,100	3,300	3,300	3,600	37	38	39	37	39
Placed for adoption	20	10	20	10	10	-	-	-	-	-
Placed with parents	540	490	500	540	430	6	6	6	6	5
Other placements in the community	1,700	1,800	1,900	2,200	2,400	21	23	23	25	26
Secure units, children's homes and hostels	2,400	2,200	2,200	2,200	2,100	29	27	26	25	23
Other residential settings	180	180	200	200	250	2	2	2	2	3
Residential schools	150	190	170	200	210	2	2	2	2	2
Missing - Absent for more than 24 hours from agreed placement	140	110	120	100	90	2	1	1	1	1
Other placement	80	50	50	50	50	1	1	1	1	1

Source: SSDA 903

1. Numbers have been rounded to the nearest 100 if they exceed 1000, and to the nearest 10, otherwise. Percentages have been rounded to the nearest whole number. See Technical Notes for more information on rounding.
2. Figures exclude children looked after under an agreed series of short term placements.
3. Historical data may differ from older publications. This is mainly due to the implementation of amendments and corrections sent by some local authorities after the publication date of previous materials.
4. Only the last occasion on which a child ceased to be looked after in the year has been counted.
5. Ethnic origin classification collected for the first time in 2009

x Figures not shown in order to protect confidentiality. See Technical Notes for information on data suppression.
. Not applicable.
- Negligible. Percentage below 0.5%

Table G1: Children now aged 19 years old who were looked after on 1 April 2003, 1 April 2004, 1 April 2005, 1 April 2006 and 1 April 2007 then aged 16 years (in their 17th year) by gender, activity and accommodation^{1,2,3}

Years ending 31 March 2006 to 2010

Coverage: England

	numbers and percentages									
	numbers					percentages				
	2006 ⁴	2007 ⁵	2008 ⁶	2009 ⁷	2010 ⁸	2006 ⁴	2007 ⁵	2008 ⁶	2009 ⁷	2010 ⁸
All children now aged 19 years old who were looked after on 1 April 2003 to 2007 then aged 16 years old	5,300	5,800	5,800	6,100	6,200	100	100	100	100	100
Unaccompanied asylum seeking children now aged 19 years old who were looked after on 1 April 2003 to 2007 then aged 16 years old	140	220	270	370	180	3	4	5	6	3
Gender	5,300	5,800	5,800	6,100	6,200	100	100	100	100	100
Male	3,000	3,200	3,300	3,400	3,500	57	56	57	56	57
Female	2,300	2,600	2,500	2,700	2,700	43	44	43	44	43
Activity⁹	5,300	5,800	5,800	6,100	6,200	100	100	100	100	100
In higher education i.e. studies beyond A level	340	350	390	420	460	6	6	7	7	7
Full time	.	340	370	400	430	.	6	6	7	7
Part time	.	10	20	20	20	.	-	-	-	-
In education other than higher education	1,200	1,500	1,600	1,600	1,900	22	26	28	26	30
Full time	.	1,300	1,400	1,400	1,600	.	23	24	23	26
Part time	.	180	180	190	240	.	3	3	3	4
In training or employment	1,800	1,800	1,800	1,800	1,500	34	31	31	30	25
Full time	.	1,300	1,300	1,300	1,000	.	23	22	21	16
Part time	.	470	510	540	510	.	8	9	9	8
Not in education, training or employment owing to illness or disability	240	290	270	300	290	5	5	5	5	5
Not in education, training or employment owing to other reasons	1,400	1,400	1,400	1,600	1,700	26	25	24	26	28
Not in touch	380	450	380	340	350	7	8	6	6	6
Accommodation¹⁰	5,300	5,800	5,800	6,100	6,200	100	100	100	100	100
With parents or relatives	700	720	700	780	730	13	12	12	13	12
Community home	260	250	280	260	290	5	4	5	4	5
Semi-independent, transitional accommodation	420	540	550	550	620	8	9	9	9	10
Supported lodgings	410	450	520	570	640	8	8	9	9	10
Ordinary lodgings	250	270	280	260	280	5	5	5	4	4
Foyers	90	60	90	80	80	2	1	2	1	1
Independent living	2,300	2,500	2,400	2,600	2,600	43	43	42	43	42
Emergency accommodation	30	40	40	30	30	1	1	1	-	1
Bed and breakfast	40	40	50	50	40	1	1	1	1	1
In custody	160	180	180	160	160	3	3	3	3	3
Other accommodation	270	270	340	370	350	5	5	6	6	6
Not in touch	380	450	380	340	350	7	8	6	6	6

Source: SSDA 903

- Numbers have been rounded to the nearest 100 if they exceed 1000, and to the nearest 10, otherwise. Percentages have been rounded to the nearest whole number. See Technical Notes for more information on rounding.
- Figures exclude children who were looked after on 1 April aged 16 (in their 17th year) under an agreed series of short term placements.
- Historical data may differ from older publications. This is mainly due to the implementation of amendments and corrections sent by some local authorities after the publication date of previous materials.
- Children now aged 19 years old who were looked after on 1 April 2003 then aged 16 years old (in their 17th year)
- Children now aged 19 years old who were looked after on 1 April 2004 then aged 16 years old (in their 17th year)
- Children now aged 19 years old who were looked after on 1 April 2005 then aged 16 years old (in their 17th year)
- Children now aged 19 years old who were looked after on 1 April 2006 then aged 16 years old (in their 17th year)
- Children now aged 19 years old who were looked after on 1 April 2007 then aged 16 years old (in their 17th year)
- Full and part time activity was collected separately from 2006-07.
- This includes accommodation judged both suitable and unsuitable.

- . Not applicable.
- Negligible. Percentage below 0.5%