



Ministry of  
**JUSTICE**



HM Courts  
& Tribunals  
Service

# **Quarterly Tribunals Statistics, 4<sup>th</sup> quarter 2010-11**

1 January 2011 to 31 March 2011

30 June 2011

© Crown copyright  
Produced by the Ministry of Justice

Alternative format versions of this report are available on request from Her Majesty's Courts and Tribunals Service by emailing [tsstats@hmcts.gsi.gov.uk](mailto:tsstats@hmcts.gsi.gov.uk).

## Contents

Introduction	2
Key Findings	3
Commentary	5
Explanatory Notes	12
Data quality and sources	14
Definitions	15
Table conventions	18

---

### Tables

Table 1.1 Tribunals receipts by quarter and by Jurisdiction
Table 1.1a Employment Tribunals receipts by quarter and Jurisdiction
Table 1.1b Immigration and Asylum receipts by quarter and case type
Table 1.1c Social Security and Child Support receipts by quarter and benefit type
Table 1.2 Tribunals disposals by quarter and Jurisdiction
Table 1.2a Employment Tribunals disposals by quarter and Jurisdiction
Table 1.2b Immigration and Asylum disposals by quarter and case type
Table 1.2c Social Security and Child Support disposals by quarter and type of benefit
Table 1.2d Social Security and Child Support outcomes by quarter and type of benefit
Table 1.2e Immigration and Asylum outcomes by quarter and case type
Table 1.3 Tribunals Caseload Outstanding by quarter and Jurisdiction
Table 1.4 Tribunals Performance Indicators by quarter and Jurisdiction

## Introduction

This report presents information on Tribunals activity for the fourth quarter of the 2010-11 year (1 January to 31 March 2011). Information for the same quarter of earlier years is also presented. This report is being published alongside annual statistics for the 2010-11 year and information in both reports is published as Official Statistics.

Quarterly statistics for all four quarters of 2010-11 are available at:  
<http://www.justice.gov.uk/publications/statistics-and-data/tribunals/quarterly.htm>.

Monthly Statistical Notices presenting management information for the Social Security and Child Support tribunal have been published for January 2011 onwards. These are available at: [www.justice.gov.uk/publications/statistics-and-data/tribunals/sscs-stats.htm](http://www.justice.gov.uk/publications/statistics-and-data/tribunals/sscs-stats.htm)

Statistics for Employment Tribunals and Employment Appeal Tribunal activity for 2009-10 were published on 3 September 2010 in "Employment Tribunal and EAT statistics 2009-10". This publication is available at : [www.justice.gov.uk/publications/employment-eat-annual-stats.htm](http://www.justice.gov.uk/publications/employment-eat-annual-stats.htm).

## Key Findings

### All Tribunals Combined

- In the fourth quarter of 2010-11 (1 January to 31 March 2011), there were 231,000 receipts of cases. This is an increase of 11% over the same quarter of the previous year and 39% more than in the fourth quarter of 2008-09. There were 198,300 disposals in the fourth quarter of 2010-11 – an increase of 13% on the same quarter in 2009-10 and 34% on that for 2008-09.
- For all tribunals combined, the caseload outstanding went up by around a fifth (from 628,800 on 31 March 2010 to 751,300 on 31 March 2011). However, for some Tribunals, the caseload outstanding has fallen in the last year - by 27% for Immigration and Asylum; by 16% for single ET claims and by 31% for Criminal Injuries Compensation and 57% for Lands.
- 50% of all single, first instance applications received for all tribunals combined, were dealt with, within target time (against a target of 75%).

### Social Security and Child Support

The Social Security and Child Support Tribunal (SSCS) arranges and carries out independent hearings for appeals on decisions made by the Department for Work and Pensions (including Jobcentre Plus, Child Support Agency and Disability and Carers Service), as well as other government departments (HM Revenue and Customs) and local authorities.

- There were 106,900 receipts to Social Security and Child Support, an increase of 3% compared to the same quarter of last year. This was a 72% increase compared to the fourth quarter of 2008-9.
- There were 110,100 disposals made by the SSCS Tribunal - a 36% increase compared to the fourth quarter of 2009-10 (and 77% when compared with the same quarter of 2008-09).
- There were 80,300 SSCS hearing clearances (those cases disposed of at hearing) in the fourth quarter of 2010-11, a 36% increase on the number in the same quarter of 2009-10.
- There was a 38% increase in the number of disposals associated with Employment Support Allowance (ESA) and Incapacity Benefit (IB). The number of disposals for this type of SSCS benefit has reached its highest ever level (61,900 disposals in the fourth quarter of 2010-11).
- In the fourth quarter of 2010-11, the number of disposals related to ESA/IB benefits exceeded receipts (for the second quarter in succession).

## Employment Tribunals

The Employment Tribunals are independent judicial bodies who determine disputes between employers and employees over employment rights.

- In the fourth quarter of 2010-11 the Employment Tribunals received 76,200 cases - a 51% increase in overall claims to Employment Tribunals, compared to the same quarter of last year. This consisted of an 80% increase in the number of multiple claims (many of which were resubmitted airline cases) and a 10% fall in the number of received single claims.
- There were 34,800 disposals made by the Employment Tribunal<sup>1</sup> - a 9% rise compared to the same quarter a year ago. Whilst the number of disposed multiple cases went up (by 32%), the number of disposed single cases fell by 9%.

## First Tier Immigration and Asylum Tribunal

The First-tier Tribunal (Immigration and Asylum Chamber) is an independent Tribunal dealing with appeals against decisions made by the Home Secretary and his officials in immigration, asylum and nationality matters.

- There was a fall of 9% in overall numbers of receipts for the First Tier Immigration and Asylum Chamber to 33,400 in the fourth quarter of 2010/11. However within this there was a 23% rise in receipts for Entry Clearance Officer cases<sup>2</sup>.
- For Immigration and Asylum, the number of disposals in the last quarter of 2010-11 exceeded receipts by 16%.

---

<sup>1</sup> There may be a small undercount due to change of computer system during the year

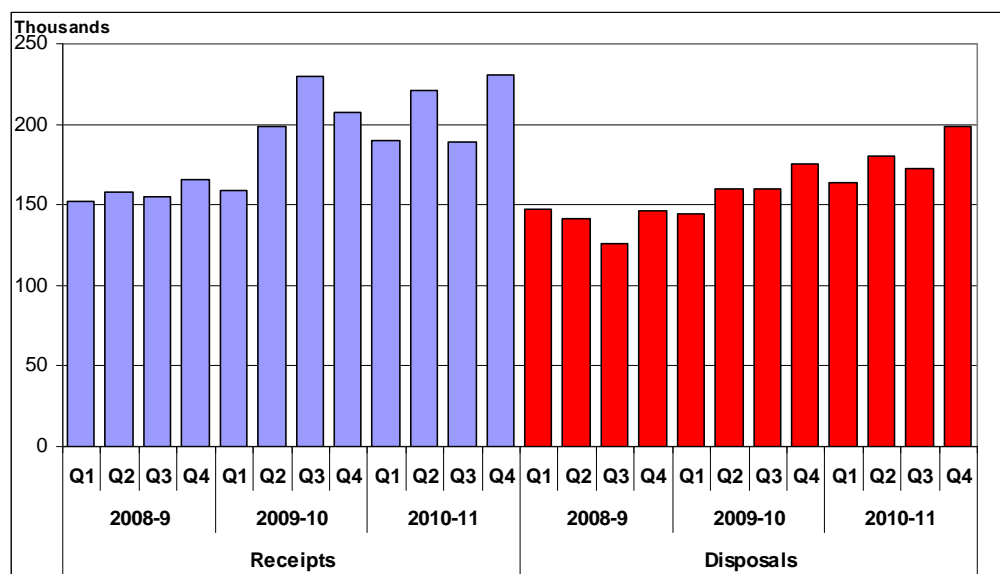
<sup>2</sup> Entry Clearance Officer cases are appeals generated by people who are not already in the UK, but have been refused permission to enter or stay in the UK for a fixed period of time, or live here permanently.

## Commentary

### Receipts (Table 1.1)

1. Tribunals had 231,000 receipts in the last quarter of 2010-11 (1 January to 31 March 2011). This is an 11% increase on the number received in the fourth quarter of 2009-10, and a 39% rise on those received in the same quarter of 2008-09. The number of receipts to the Social Security and Child Support (SSCS) tribunal rose by 3% between the fourth quarters of 2009-10 and 2010-11. There was also an increase in claims received by Employment Tribunals (up by 51%, but mainly attributed to multiple cases) over the same period.
2. From 1 April 2010 to 31 March 2011 there were 831,000 Tribunals receipts, an increase of just under 5% on the 793,900 received in 2009-10, and a rise of 31% on the number in 2008-09. Excluding multiple claims<sup>3</sup> to Employment Tribunals (which vary from year to year and can distort the picture on workload), there was a 7% increase in receipts in the last year.

**Figure 1: Receipts and Disposals for all Tribunals, 2008-09 to 2010-11**



Source: Tribunals quarterly and annual reconciled returns

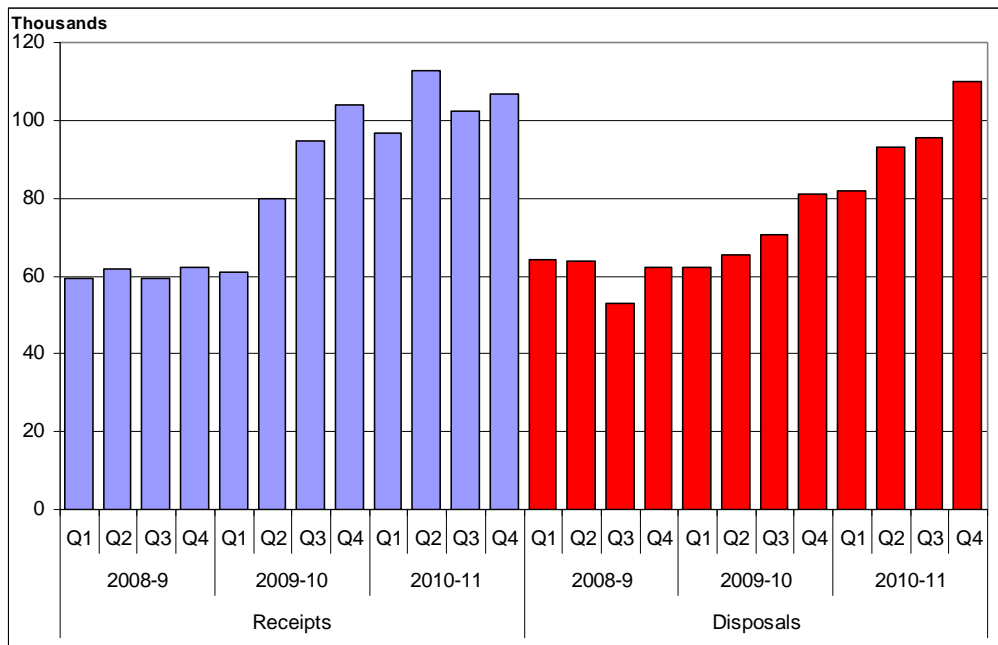
<sup>3</sup> Multiple cases are where two or more people bring cases, involving one or more jurisdiction(s) usually against a single employer but not necessarily so, for instance in TUPE cases, and always arising out of the same or very similar circumstances. As a multiple, the cases are processed together.

3. Whilst receipts to Employment Tribunals and for Immigration and Asylum fell in the year of 2010-11, the number for Social Security and Child Support went up by 23% (and by 72% when compared with 2008-09).

### Receipts by Jurisdiction

4. For SSCS, there were 106,900 receipts in the fourth quarter of 2010-11 – 46% of cases received by all Tribunals. Receipts to SSCS have generally been increasing over recent years. When compared with the same quarter in previous years, receipts were 3% higher than in 2009-10 and 72% greater than the number in 2008-09.

**Figure 2: Social Security and Child Support Receipts and Disposals, 2008-09 to 2010-11**



Source: Tribunals quarterly and annual reconciled returns

5. Of the 106,900 cases received by SSCS in the fourth quarter of 2010-11, 55% were for Employment Support Allowance (ESA)/Incapacity Benefit (IB); 20% for Disability Living Allowance (DLA)/Attendance Allowance (AA); and 13% for Job Seeker's Allowance (JSA). The number of receipts of ESA/IB cases in Q4 of 2010-11 was 58,500 – similar to the number received in the same quarter of 2009-10.
6. Comparing receipts in the fourth quarter, those for Carer's Allowance have more than doubled; JSA have gone up by 48%; those for the Social Fund have gone up by 28% and those for Retirement Pension have increased by 27%, from 2009-10 to 2010-11.
7. In Employment Tribunals (ET), the number of receipts (claims) between 1 January and 31 March 2011 was 76,200 – 51% more than in the same quarter of 2009-10, and 73% more than for the fourth quarter of 2008-09.



The rises were due to the high number of multiple receipts received in the last quarter of 2010-11. There were 61,200 multiple receipts in this quarter— an increase of 80% when compared with the same quarter in 2009-10. The total number of ET claims is dependent upon multiple receipts, which are highly variable in nature. In the last quarter of 2010-11, as in many previous periods, the number of ET claims also included periodic submissions of airline cases. The number of single claims fell by 10% from 16,700 between 1 January and 31 March 2010, to 15,100 for the same period of 2010-11.

8. For ET, when the jurisdictional<sup>4</sup> mix of claims is considered (Table 1.1a), there were 115,000 jurisdictional complaints received in the fourth quarter of 2010-11 (an increase of 31% on the same quarter in 2009-10). Of the total number of jurisdictional complaints received, 48% were for Working Time Directive (includes resubmitted airline cases); 21% were for unfair dismissal, redundancy and breach of contract and 18% were for unauthorised deductions (Wages Act).
9. When comparing the fourth quarter of 2009-10 with that of 2010-11, the number of jurisdictional claims associated with Working Time Directive (mainly resubmitted airline cases) went up significantly (from 22,600 to 54,900). Those for unauthorised deductions (Wages Act) also rose by 28% from the fourth quarter of 2009-10 to that of 2010-11. For the same time period there were falls in receipts for a number of jurisdictions – by 32% for sexual discrimination and 37% for Equal Pay.
10. In the First Tier Immigration and Asylum Chamber, there were 33,400 receipts in the last quarter of 2010-11 – a 9% fall when compared with the same quarter of 2009-10 and a 29% fall compared to that of 2008-09. The overall fall in receipts is not reflected in all case types, as those for Entry Clearance Office went up by 23% between the fourth quarters of 2009-10 and 2010-11.

### **Disposals (Table 1.2)**

11. Between 1 January and 31 March 2011, a total of 198,300 cases or claims were disposed of. This is an increase of 13% when compared with the same quarter of 2009-10 and 34% on that of 2008-09. The rise was mainly seen in Social Security and Child Support Appeals (up by 36%) and Employment Tribunals (up by 9%). There were also some rises in disposals in other tribunals such as Lands (from 250 to 610) and Gender Recognition Panel (up 76%).
12. Despite the rise in disposals, the numbers have not kept pace with the number of receipts. In the fourth quarter of 2010-11, the number of

---

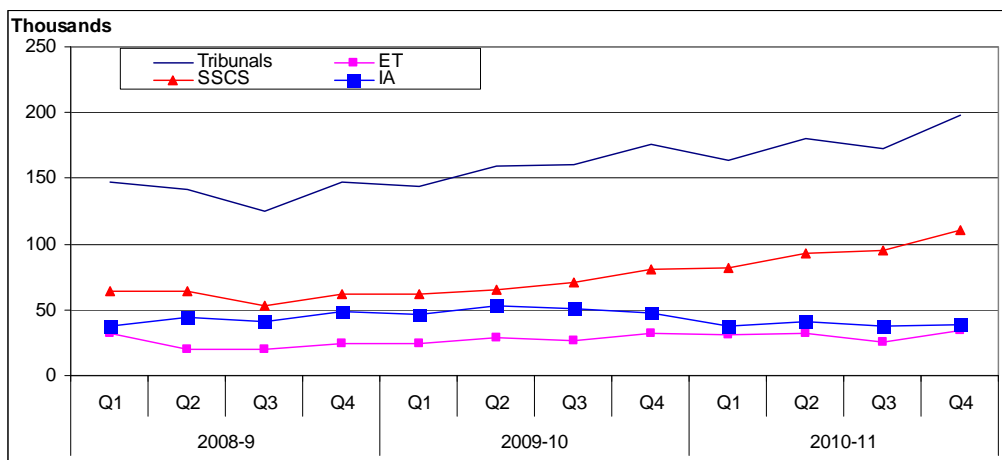
<sup>4</sup> A claim can contain a number of grounds, known as jurisdictional complaints. In any hearing, the tribunal has to decide upon the merits of the claim made under each jurisdiction.

receipts was 17% higher than the number of disposals, meaning that the overall caseload continues to rise.

13. In the full year of 2010-11, Tribunals disposed of 714,500 disposals. The level of disposals has increased over the last 3 years and was 12% higher than in 2009-10 and 28% more than in 2008-09.

### Disposals by Jurisdiction

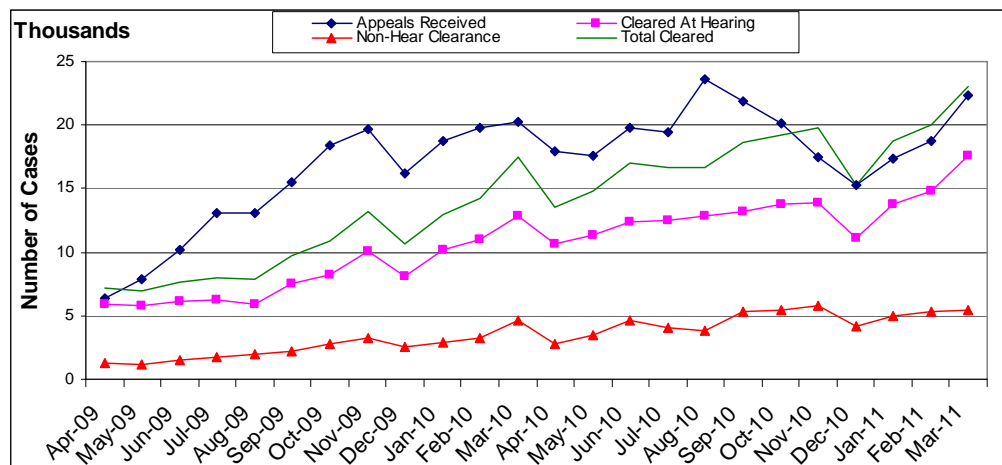
Figure 3: Disposals by jurisdiction, 2008-09 to 2010-11



Source: Tribunals quarterly and annual reconciled returns

14. A total of 110,100 cases were disposed of by SCS in the last quarter of 2010-11, 36% more than for the same period of 2009-10 and 77% more than for the same quarter of 2008-09. The number of disposals has been increasing since the first quarter of 2009-10.
15. Of the 110,100 cases disposed of: 61,900 (56%) were for Employment Support Allowance (ESA)/Incapacity Benefit (IB); 19,200 (17%) were related to Disability Living Allowance (DLA)/Attendance Allowance (AA) and 14,000 (13%) were for Job Seeker's Allowance (JSA).
16. The rise in SCS receipts over recent years has been in response to the introduction, in October 2008, of Employment Support Allowance to replace Incapacity Benefit (and seen in the management information from June 2009 data onwards). Figure 4 shows the change in receipts and disposals for ESA/IB benefits throughout 2009-10 and 2010-11. It also gives details of those disposals that were cleared by having a Tribunal hearing and those that were settled or struck out (non-hearing clearances). Whilst the number of receipts for ESA/IB in the fourth quarter of 2010-11 was similar to that in the same period of 2009-10, disposals have increased by 38% reaching their highest ever levels. The number of ESA/IB disposals exceeded receipts for the second successive quarter.

Figure 4: Receipts and Disposals for Employment Support Allowance and Incapacity Benefit, April 2009 to March 2011



Source: Tribunals quarterly and annual reconciled returns

17. There were increases between the fourth quarters of 2009-10 and 2010-11 in disposals for other benefit types: Job Seekers Allowance (of 87%); Industrial Injuries Disablement Benefit (of 47%) and AA/DLA (of 18%).
18. Table 1.2d provides some information on the outcome of Social Security and Child Support cases that were cleared at hearing<sup>5</sup> and whether the decision was found in favour of the appellant, or if the original decision made by DWP was upheld. In the fourth quarter of 2010-11, there were 80,300 hearing clearances – a 36% rise on the number in the same quarter of 2009-10. Of these, 34% were found in favour of the appellant. This proportion varied by type of benefit with 40% of Child Support, 40% of ESA/IB, 37% of DLA/AA and 8% of Social Fund hearing clearances being found in favour of the appellant.
19. In the fourth quarter of 2010-11, Employment Tribunals disposed of 34,800 claims<sup>6</sup> – a 9% increase on the number for the same quarter of 2009-10 and 43% more than in Q4 of 2008-09. Whilst the number of disposed multiple cases went up (by 32% between the fourth quarter of 2009-10 and that of 2010-11), the number of disposed single cases fell by 9%.
20. Table 1.2a gives details of ET Jurisdictional claims disposed of by type of jurisdiction and outcome. Between 1 January and 31 March 2011, 69,300 jurisdictional claims were disposed of (an increase of 6% on the same period of the previous year). Of these:
  - 38% were unfair dismissal, breach of contract or redundancy;

<sup>5</sup> These were cleared via a Tribunal (could be a panel or a member of the Judiciary sitting alone) with a decision/outcome.

<sup>6</sup> There may be a small undercount in ET disposals because of changes to computer systems during the year.

- 16% were associated with unauthorised deductions (Wages Act).
21. Of the total jurisdictions disposed of in the last quarter of 2010-11:
- 36% were withdrawn; 26% were Acas Conciliated and 10% were successful at hearing.
22. For Immigration and Asylum, overall there were 38,800 disposals in the fourth quarter of 2010-11 – 19% lower than in the same quarter of 2009-10 and 21% lower than for the fourth quarter of 2008-09. However, the number of disposals in the last quarter of 2010-11 exceeded receipts by 16%.
23. Comparing the fourth quarter of 2009-10 with that of 2010-11 by case type, there was a 2% increase in the number of disposals for Managed Migration, 27% fall for Family Visit Visa, 26% fall for Entry Clearance Officer and an 18% fall in Asylum disposals.
24. Table 1.2e gives outcomes for those Immigration and Asylum cases that were disposed of. Of the 38,800 cases that were disposed of between 1 January and 31 March 2011:
- 16,800 (43%) were dismissed;
  - 15,500 (40%) were allowed;
  - 6,400 (17%) were withdrawn.

### **Caseload Outstanding (Table 1.3)**

25. At 31 March 2011, the caseload outstanding was 751,300, an increase of around a fifth<sup>7</sup> on the number at 31 March 2010, and 61% (excluding Mental Health and Employment Appeal Tribunal) higher than on 31 March 2009. Just over three fifths of the caseload outstanding was for multiple ET claims.
26. Even though the number of disposals has been increasing, these have not kept pace with the level of receipts and thus caseload outstanding has generally continued to rise. However, for some Tribunals, it has fallen in the last year - by 27% for Immigration and Asylum; by 16% for single ET claims and by 31% for Criminal Injuries Compensation and 57% for Lands.

### **Performance (Table 1.4)**

27. Tribunals have a set of Primary Performance Indicators for each jurisdiction which are largely based upon waiting times from receipt to

---

<sup>7</sup> Comparison excludes information for Employment Appeal Tribunal as this was not available for 2008-09 and 2009-10

disposal. Most of these are 75% targets, but the waiting times themselves vary. The indicators are consolidated to form KPI 1 which is:

*“The percentage of single, first instance applications that are dealt with within target time (75% target).”*

28. In the fourth quarter of 2010-11, 50% of applications were dealt with within target time. From April 2010, changes were made to some of the performance indicators to more fully measure the process within individual tribunals. This has meant that a number of individual indicators have changed and there has been an effect to the calculation of the overall KPI 1 indicator. As a result, some indicators from April 2010 onwards are not directly comparable with those for earlier years.

29. When examined by jurisdiction, performance for 2010-11, was as follows:

- 45% in Social Security and Child Support;
- 61% overall in Immigration and Asylum (but with Entry Clearance Officer (71%) and Family Visit Visa (66%)).
- 60% in Employment Tribunals;
- 73% in Employment Appeal Tribunal;
- 99.7% in Mental Health (section 2).

30. 28. Many of the Special Tribunals met or exceeded their targets and performance was as follows:

- 100% in Charities;
- 100% in First Tier Immigration;
- 100% in Reserve Forces Appeals;
- 91% in Transport;
- 88% in Lands (Category 1);
- 86% in Tax First Tier (basic cases)
- 81% in Special Educational Needs and Education ;
- 81% in Care Standards;
- 80% in Local Government Standards in England;
- 79% in Gender Recognition.

## Explanatory Notes

### ET Information in Nottingham and Leicester

Historically, Employment Tribunals statistics have been extracted from the ETHOS case management system. However, a pilot replacement system was developed (Caseflow). The pilot of the Caseflow system commenced in Nottingham in November 2009, and whilst steps were taken to protect the data through to the end of the 2009-10 reporting year (i.e. to 31 March 2010), the resource required to maintain duplicated entry onto the old ETHOS system was simply not sustainable. There was every expectation that the new system would be in a position to provide the data very early in the new reporting year. The pilot of Caseflow was extended to Leicester with effect from 24 May 2010. Data for Leicester was available from ETHOS up until that point.

The Caseflow system has now ceased and a reversion has taken place to the former ETHOS system. In some cases complete data has not been available for Nottingham and Leicester. Whilst there is robust data on receipts of claims, disposals and caseload outstanding, with regard to Nottingham and Leicester, jurisdictional claims and performance data is incomplete. Thus we have removed data for these two areas when making comparisons with previous years.

### Changes to Performance Indicators for 2010-11

The former Tribunals Service's primary target on waiting times (KPI 1) was:

*The percentage of single, first instance tribunal applications that are dealt with within target time (75% target).*

This is a composite indicator made up from individual performance indicators for separate tribunals. Recommendations for performance indicators to measure the more complete process within the tribunals were agreed by the Tribunals Service Executive Team in November 2009 and January 2010.

The Performance Indicators are the same as in 2009-10 except for:

- IA – new indicator for Family Visit Visa, measuring the percentage of cases where the time taken from receipt in TSIA to promulgation by Immigration Judge is within 25 weeks (75% target). The former target measured the time from the receipt of the bundle to promulgation (was a 10 week target);
- IA – new indicator for Entry Clearance, measuring the percentage of cases where the time taken from receipt in TSIA to promulgation by Immigration Judge is within 30 weeks (75% target). The former target measured the time from the receipt of the bundle to promulgation (was a 10 week target);

- SCS – new indicator measuring the percentage of appeals where the final outcome is given to the appellant within 16 weeks of the receipt at SCS (16 week target). The former target measured the time from receipt to first hearing (a 14 week target);
- MH – 3 indicators of :
  - The percentage of Section 2 cases listed for hearing within 7 days (100% target);
  - The percentage of non-restricted cases disposed of within 9 weeks of receipt (75% target);
  - The percentage of Restricted Patient cases disposed of within 17 weeks (75% target).
- First Tier Tax – existing indicator on cases disposed of within 70 weeks and two new indicators to measure the different types of cases of :
  - The percentage of paper cases disposed of in 20 weeks;
  - The percentage of basic cases disposed of in 20 weeks.
- Lands – two indicators, which better reflect the type of work done by the Tribunal:
  - The percentage of Category 1 cases<sup>8</sup> to be disposed of within 24 weeks of registration (75% target);
  - The percentage of Category 2 cases<sup>9</sup> to be disposed of within 70 weeks of registration (75% target).
- Administrative Appeals Chamber – 2 new indicators have been introduced to better reflect the work of the Chamber:
  - The percentage of appeals disposed of in 20 weeks (75% target);
  - The percentage of applications for Leave to Appeal to be disposed of within 10 weeks of receipt (75% target).

---

<sup>8</sup> Absent Owners and Rights of Light jurisdictions.

<sup>9</sup> Leasehold Reform Appeals, Rating Appeals, Reference Cases, Housing Act Cases, Law of Property (restrictive covenants).

## **Data quality and sources**

Information presented in this report is management information drawn from a number of administrative sources. Although care is taken when processing and analysing the data, the details are subject to inaccuracies inherent in any large-scale recording system and it is the best data that is available at the time of publication. HMCTS is examining the quality of management information. Thus, it is possible that some revisions may be issued.

### **Revisions**

Some statistics were correct at the time of publication but have been revised following data quality checks or reconciliation. These values have been marked as 'r'.

### **Change of Names of Tribunals**

A number of Tribunals became part of the former Tribunals Service since it was formed, or have changed their name. . Details of these changes have been published in Annex A of The Tribunals Service Annual Report and Accounts, 2009-10.



## Definitions

**Receipt** – Volumetric term covering the acceptance of a case by a HMCTS Tribunal..

**Disposal** – A disposal is the closure of a case when work has ceased to be done. This can be through a claim being withdrawn, settled, dismissed or being decided at a hearing.

**Hearing clearance** (SSCS) – these are cleared via a Tribunal (could be a panel or member of the Judiciary sitting alone) with a decision/outcome.

**Non-hearing clearance** (SSCS) – these are cases withdrawn prior to a hearing, struck out or superseded. There is no Tribunal judgement.

**Caseload outstanding** – The number of cases outstanding at the end of the period and still waiting to be dealt with to completion.

**ET Claim** – A claim may be brought under more than one jurisdiction or subsequently amended or clarified in the course of proceedings, but will be counted only once.

**ET single and multiple claims** – Claims to the Employment Tribunal may be classified into two broad categories – singles and multiples. Multiple cases are where two or more people bring cases, involving one or more jurisdiction(s) usually against a single employer but not necessarily so, for instance in TUPE cases, and always arising out of the same or very similar circumstances. As a multiple, the cases are processed together.

**ET Jurisdiction** – The Employment Tribunal powers to hear a claim are determined by legislation, with statutory provisions defining the ambit of the jurisdiction that can be covered by a claim to an Employment Tribunal.

**ET Jurisdictional mix** – A claim may contain a number of grounds, known as jurisdictional cases. In any hearing, the tribunal has to decide upon the merits of the claim made under each jurisdiction e.g. unfair dismissal and sex discrimination. The total number of jurisdictions covered by each case gives a truer measure of workload than the number of claims. The jurisdictions covered by ET are wide ranging, from discrimination and unfair dismissals to issues around salary and working conditions.

### IA Case types:

**Asylum** – appeals against a refusal to grant asylum, including asylum claims which raise Human Rights grounds.

**Managed Migration** – appeals generated by people already in the UK who have been refused permission to extend their stay here (either permanently or

temporarily). This appeal type will also cover occasions where an individual has their permission to be in the UK revoked.

**Family Visit Visa (FVV)** – appeals against decisions not to allow temporary visits to see family in the UK.

**Entry Clearance Officer (ECO)** – appeals generated by people who are not already in the UK, but have been refused permission to enter or stay in the UK for a fixed period of time, or live here permanently.

**Deportation** – appeals against deportation orders made against people by the Home Secretary.

**Human Rights Appeals** – A separate Human Rights Appeal category was introduced in the Tribunal in 2001, following the implementation of the Human Rights Act 1998 to allow the consideration of Human Rights arguments for cases where those grounds were not considered at the original human rights appeal. Since then, a range of in-country case types raising Human Rights grounds have been recorded under this category when they would have been more appropriately recorded against another case type. The Tribunal has made a recent change to its administrative processes to record such cases more suitably, which will explain any drop in numbers in the Human Rights (Other) appeal category.

**Hearing** – The hearing is a meeting at which the tribunal panel considers evidence (either orally or paper based) and reaches a decision (where the decision may be to adjourn or to agree a final outcome). If the hearing is adjourned and restarted, it counts as one hearing.

Examples of hearings include:

- Paper hearings;
- Oral hearings;
- Case Management Discussions;
- Decision on Eligibility.

**Oral Hearing** – A hearing where the party (ies) and/or their representative(s) attend (this can be by telephone or by video conference).

**Paper Hearing** – Consideration of the case using documents, and not requiring any physical appearance by the parties.

**Decision in favour (SSCS)** – Decision in favour of the appellant.

**Decision upheld (SSCS)** – Decision made by the First Tier Agency and upheld by the Tribunal.

**Withdrawal** – The applicant/claimant/appellant ceases action either before or at the hearing.

**Settlement** – Cases settled without the need for a hearing. A third party may have been involved in the process.

**Postponement** – Where a case is taken out of the list, **prior to** the commencement of the hearing – can be done by the applicant, or any other party.

**Adjournment** – Where, on the day of the hearing, the Panel decides that, for whatever reason, the appeal/case cannot be finalised and has to put off making a final decision to another date, for example because further evidence is required.

**Outcome of hearing** – The outcome of the hearing is the final determination of the proceedings or of a particular issue in those proceedings; it may include an award of compensation, a declaration or recommendation and it may also include orders for costs, preparation time or wasted costs either in favour or against an appellant. **Note:** ET records outcomes for each act (or jurisdiction), not for the hearing.

**Caseload outstanding** – The number of cases outstanding at the end of the period and still waiting to be dealt with to completion.

## Table conventions

### Rounding

Figures in the tables are rounded independently and thus may not add to figures because of rounding. The following conventions have been used throughout:

- Values less than 100 remain as unit values.
- Values from 100 to 999 are rounded to the nearest 10.
- Values of 1,000 and over are rounded to the nearest hundred.

### Notation

The following symbols have been used throughout the tables in this bulletin:

.	= Not applicable
..	= Not available
-	= Small Value
~	= No cases dealt with so rate could not be calculated
0	= Nil
(r)	= Revised data
(p)	= Provisional data

### Contact points for further information

Spreadsheet files of the tables and graphs contained in this document are also available for download from this address.

Press enquiries should be directed to the Ministry of Justice press office:

Email: [press.office@justice.gsi.gov.uk](mailto:press.office@justice.gsi.gov.uk)

Other enquiries about these statistics should be directed to:

#### HMCTS

Performance, Analysis and Reporting Team

4<sup>th</sup> Floor

Taylor House

88 Rosebery Avenue

London EC1R 4QU

Email: [tsstats@hmcts.gsi.gov.uk](mailto:tsstats@hmcts.gsi.gov.uk)

General enquiries about the statistical work of the Ministry of Justice can be e-mailed to: [statistics.enquiries@justice.gsi.gov.uk](mailto:statistics.enquiries@justice.gsi.gov.uk)

General information about the official statistics system of the UK is available from [www.statistics.gov.uk](http://www.statistics.gov.uk)

**Table 1.1 Tribunals Receipts by Jurisdiction**

Number

	2008-09	2009-10	2010-11				Annual Total
	Q4 <sup>3</sup>	Q4	Q1	Q2	Q3	Q4	
<b>Tribunals Overall</b>	<b>166,200</b>	<b>207,200</b>	<b>190,300</b>	<b>220,900</b>	<b>188,800</b>	<b>231,000</b>	<b>831,000</b>
<b>First Tier Tribunal (Immigration and Asylum Chamber) <sup>1</sup></b>	<b>46,900</b>	<b>36,900</b>	<b>34,100</b>	<b>36,300</b>	<b>33,100</b>	<b>33,400</b>	<b>136,800</b>
Employment Appeal	440	500	520	540	490	500	2,000
Employment	44,100	50,600	44,400	57,600	39,900	76,200	218,100
Singles	..	16,700	15,100	15,400	15,100	15,100	60,600
Multiples	..	33,900	29,400	42,200	24,800	61,200	157,500
<b>Social Security and Child Support</b>	<b>62,200</b>	<b>103,800</b>	<b>96,500</b>	<b>112,600</b>	<b>102,500</b>	<b>106,900</b>	<b>418,500</b>
<b>Mental Health <sup>2</sup></b>	<b>5,900</b>	<b>6,300</b>	<b>6,500</b>	<b>6,400</b>	<b>6,200</b>	<b>6,800</b>	<b>25,900</b>
Adjudicator to HM Land Registry	480	850	360	310	250	340	1,300
Asylum Support	400	1,300	1,400	1,100	880	690	4,100
Care Standards	52	37	46	38	27	22	130
Charities	0	-	-	6	-	-	12
Claims Management Services	-	-	0	0	-	-	5
Consumer Credit Appeals	-	5	-	-	-	-	8
Criminal Injuries Compensation	810	760	880	710	550	570	2,700
Environmental Jurisdiction	.	.	0	0	0	0	0
Estate Agents Appeals	0	-	0	0	0	0	0
Financial Services and Markets	5	6	5	17	440	240	710
First Tier Tribunal (Immigration Services)	-	-	-	5	-	-	10
Gambling Appeals	0	0	-	0	0	0	-
Gender Recognition Panel	59	63	83	86	72	62	300
Information Rights	25	62	49	44	42	85	220
Lands	260	480	230	220	150	150	750
Local Government Standards in England	.	14	15	15	9	10	49
Pensions Regulator	0	0	-	-	-	0	8
Primary Health Lists	.	18	23	24	40	38	130
Reserve Forces Appeals	.	-	-	0	-	-	9
Special Commissioners (Income Tax)	190	.	.	.	.	.	.
Special Educational Needs and Disability	600	860	980	850	640	910	3,400
Tax first tier	.	3,100	2,300	2,300	1,900	2,500	8,900
Transport	200	130	140	130	140	120	520
<b>Upper Tribunal (Administrative Appeals Chamber)</b>	<b>1,000</b>	<b>900</b>	<b>1,100</b>	<b>1,100</b>	<b>1,000</b>	<b>1,000</b>	<b>4,100</b>
VAT & Duties	1,800	.	.	.	.	.	.
<b>War Pensions and Armed Forces Compensation</b>	<b>650</b>	<b>560</b>	<b>670</b>	<b>550</b>	<b>500</b>	<b>500</b>	<b>2,200</b>

Source: Tribunals Quarterly and Annual Reconciled Returns

Figures may not add to totals because of rounding

. Not applicable  
 .. Not available  
 - Small Value

0 Nil  
 (r) Revised data  
 (p) Provisional data

<sup>1</sup> The Tribunals Service Immigration and Asylum (IA), consisting of 'First Tier Tribunal Immigration and Asylum Chamber' and 'Upper Tribunal Immigration and Asylum Chamber' (FTTIAC and UTIAC), replaced the Asylum and Immigration Tribunal (AIT) on 15 February 2010. Figures for 2010-11 relate to appeals dealt with by Immigration Judges at the FTIAC. Figures for 2009-10 relate to appeals dealt with by Immigration Judges at the AIT or FTIAC. Figures for 2008-09 relate to appeals dealt with by Immigration Judges in AIT.

<sup>2</sup> The new MARTHA database was introduced in September 2008 and thus information for 2008-09 may not be directly comparable.

<sup>3</sup> Data for Q4 2008/09 is the best information available, as quarterly reconciliations were not undertaken for this year.

**Table 1.1 a Employment Tribunal Receipts by Jurisdiction 2010-11**

	2009-10		2010-11				Number
	Q4	Q1	Q2	Q3	Q4	Annual Total	
<b>Total Claims Accepted</b> <sup>1</sup>	50,600	44,400	57,600	39,900	76,200	218,100	
<b>Jurisdiction</b>							
Unfair dismissal	12,300	12,800	12,100	11,600	11,400	47,900	
Unauthorised deductions (Formerly Wages Act)	16,300	12,800	22,500	15,200	20,900	71,300	
Breach of contract	9,300	9,900	9,200	7,700	7,800	34,600	
Sex discrimination	3,200	2,700	8,100	5,300	2,100	18,300	
Working Time Directive	22,600	18,700	27,000	13,500	54,900	114,100	
Redundancy pay	3,800	5,100	4,100	3,300	3,500	16,000	
Disability discrimination	1,800	1,700	1,800	1,900	1,800	7,200	
Redundancy – failure to inform and consult	2,000	1,900	2,800	1,300	1,400	7,400	
Equal pay	8,400	7,100	11,100	11,100	5,300	34,600	
Race discrimination	1,400	1,300	1,300	1,300	1,100	5,000	
Written statement of terms and conditions	1,300	1,100	930	1,000	1,000	4,000	
Written statement of reasons for dismissal	230	250	270	200	210	930	
Written pay statement	350	300	360	310	370	1,300	
Transfer of an undertaking - failure to inform and consult	480	410	800	390	280	1,900	
Suffer a detriment / unfair dismissal - pregnancy	380	430	400	680	370	1,900	
Part Time Workers Regulations <sup>2</sup>	91	130	1,200	130	88	1,600	
National minimum wage	130	120	130	150	130	520	
Discrimination on grounds of Religion or Belief	250	210	220	240	210	880	
Discrimination on grounds of Sexual Orientation	190	140	190	170	150	640	
Age Discrimination	800	1,400	1,800	2,900	770	6,800	
Others	2,500	1,400	1,500	1,300	1,200	5,500	
<b>Total</b>	<b>87,600</b>	<b>79,700</b>	<b>107,900</b>	<b>79,700</b>	<b>115,000</b>	<b>382,400</b>	

Source: ET Quarterly and Annual Reconciled Returns

Figures may not add to totals because of rounding

. Not applicable

.. Not available

- Small Value

0 Nil

(r) Revised data

(p) Provisional data

[1] A claim may be brought under more than one jurisdiction or subsequently amended or clarified in the course of proceedings but will be counted only once.

[2] The high number of receipts for Part Time Workers Regulations in Q2 2010/11 are due to a large multiple receipt in July 2010.

**Table 1.1b Immigration and Asylum Receipts by Case type**

Number

	2008-09	2009-10	2010-11				Annual Total
	Q4	Q4	Q1	Q2	Q3	Q4	
<b>First Tier Tribunal (Immigration and Asylum Chamber) <sup>1</sup></b>	46,900	36,900	34,100	36,300	33,100	33,400	<b>136,800</b>
<b>Asylum</b>	2,400	4,300	4,200	3,900	3,900	3,900	<b>15,800</b>
<b>Managed Migration</b>	8,600	12,800	9,700	8,000	9,400	10,400	<b>37,600</b>
<b>Entry Clearance</b>	23,600	7,500	7,400	7,300	9,300	9,200	<b>33,200</b>
<b>Family Visit Visa</b>	12,100	12,000	12,600	16,800	10,200	9,700	<b>49,400</b>
<b>Deport and others</b>	210	240	190	210	280	260	<b>940</b>

Source: Immigration and Asylum Quarterly and Annual Reconciled Returns

Figures may not add to totals because of rounding

. Not applicable

.. Not available

- Small Value

0 Nil

(r) Revised data

(p) Provisional data

<sup>1</sup> The Tribunals Service Immigration and Asylum (IA), consisting of 'First Tier Tribunal Immigration and Asylum Chamber' and 'Upper Tribunal Immigration and Asylum Chamber' (FTTIAC and UTIAC), replaced the Asylum and Immigration Tribunal (AIT) on 15 February 2010. Figures for 2010-11 relate to appeals dealt with by Immigration Judges at the FTTIAC. Figures for 2009-10 relate to appeals dealt with by Immigration Judges at the AIT or FTTIAC. Figures for 2008-09 relate to appeals dealt with by Immigration Judges in AIT.



**Table 1.1c Social Security and Child Support Receipts by Benefit Type**

Benefit	Number					
	2009-10	2010-11				
	Q4	Q1	Q2	Q3	Q4	Annual Total
Attendance Allowance	1,100	870	1,100	1,100	1,100	4,200
Disability Living Allowance	20,100	17,300	21,000	21,400	19,900	79,400
Bereavement Benefit	120	120	110	140	120	500
Carer's Allowance	210	310	440	420	460	1,600
Child Benefit Lone Parent	420	340	640	480	500	1,900
Child Support Allowance	1,100	940	930	920	940	3,700
Tax Credits	550	710	720	670	930	3,000
Credits (Other)	0	0	-	-	-	5
COEG	0	-	-	-	0	-
Compensation Recovery Unit	94	75	87	100	100	370
Housing/Council Tax	3,100	3,100	3,300	3,000	3,000	12,300
Disability Working Allowance	-	0	0	-	0	-
Employment Support Allowance	46,500	46,000	55,700	44,800	50,800	197,400
Health in Pregnancy Grant	220	120	93	50	130	390
Home Responsibilities Protection	10	7	6	-	9	25
Incapacity Benefit	12,200	9,400	9,100	8,000	7,700	34,300
Income Support	4,200	3,900	4,000	4,000	3,100	15,100
Industrial Death Benefit	-	-	0	0	0	-
Industrial Injuries Disablement Benefit	2,700	2,600	2,200	2,300	2,100	9,200
Job Seekers Allowance	9,300	8,800	11,500	12,900	13,800	47,000
Lookalikes	-	-	-	-	-	8
Maternity Benefit/Allowances	69	57	71	57	48	230
Others (Extinct/rare Benefits)	14	37	58	33	16	140
Penalty Proceedings	0	-	0	0	-	-
Pensions credit	460	330	360	390	530	1,600
Retirement Pension	220	220	190	270	280	960
Severe Disablement Benefit/Allowance	36	26	23	42	39	130
Social Fund	1,100	1,300	1,000	1,200	1,400	4,800
Vaccine Damage Appeals	-	-	-	-	-	7
<b>Total</b>	<b>103,800</b>	<b>96,500</b>	<b>112,600</b>	<b>102,500</b>	<b>106,900</b>	<b>418,500</b>

Source: SSSC Quarterly and Annual Reconciled Returns

Figures may not add to totals because of rounding

- . Not applicable
- .. Not available
- Small Value

0 Nil

- (r) Revised data
- (p) Provisional data

**Table 1.2 Tribunals Disposals by Jurisdiction**

	Number						
	2008-09	2009-10	2010-11				Annual Total
	Q4 <sup>4</sup>	Q4	Q1	Q2	Q3	Q4	
<b>Tribunals <sup>1</sup></b>	<b>147,500</b>	<b>175,600</b>	<b>163,600</b>	<b>180,300</b>	<b>172,300</b>	<b>198,300</b>	<b>714,500</b>
First Tier Tribunal (Immigration and Asylum Chamber) <sup>1</sup>	48,800	47,800	37,100	40,900	37,800	38,800	154,700
Employment Appeal <sup>2</sup>	150	150	470	470	600	450	2,000
Employment <sup>3</sup>	24,300	32,000	30,700	31,700	25,700	34,800	122,800
Singles	..	18,000	16,400	15,600	14,600	16,300	62,900
Multiples	..	14,100	14,300	16,000	11,000	18,500	59,900
Social Security and Child Support	62,200	81,000	81,800	93,000	95,300	110,100	380,200
Mental Health	6,400	6,600	6,200	6,900	6,500	7,000	26,600
Adjudicator to HM Land Registry	550	530	460	350	410	410	1,600
Asylum Support	400	1,100	1,400	1,200	870	720	4,200
Care Standards	69	65	37	46	32	27	140
Charities	0	-	-	-	-	-	8
Claims Management Services	0	-	-	0	-	0	-
Consumer Credit Appeals	5	-	-	0	-	-	9
Criminal Injuries Compensation	790	910	840	960	810	960	3,600
Environmental Jurisdiction	.	.	0	0	0	0	0
Estate Agents Appeals	0	5	-	-	0	0	-
Financial Services and Markets	7	8	13	6	-	0	23
First Tier Tribunal (Immigration Services)	-	-	-	-	-	-	7
Gambling Appeals	0	0	0	0	-	-	-
Gender Recognition Panel	87	51	61	80	85	90	320
Information Rights	27	38	41	61	41	52	200
Lands	180	250	310	400	430	610	1,800
Local Government Standards in England	.	19	14	16	18	9	57
Pensions Regulator	0	0	-	0	0	0	-
Primary Health Lists	.	21	28	24	28	29	110
Reserve Forces Appeals	.	-	-	-	-	-	11
Special Commissioners (Income Tax)	62	.	.	.	.	.	.
Special Educational Needs and Disability	730	730	700	760	690	800	2,900
Tax first tier	.	2,600	1,500	1,600	1,500	1,600	6,100
Transport	210	130	150	130	140	120	540
Upper Tribunal (Administrative Appeals Chamber)	1,000	930	1,200	1,200	850	1,100	4,400
VAT and Duties	980	.	.	.	.	.	.
War Pensions and Armed Forces Compensation	610	560	580	580	480	550	2,200

Source: Tribunals Quarterly and Annual Reconciled Returns

Figures may not add to totals because of rounding

.. Not applicable

.. Not available

- Small Value

0 Nil

(r) Revised data

(p) Provisional data

<sup>1</sup> The Tribunals Service Immigration and Asylum (IA), consisting of 'First Tier Tribunal Immigration and Asylum Chamber' and 'Upper Tribunal Immigration and Asylum Chamber' (FTTIAC and UTIAC), replaced the Asylum and Immigration Tribunal (AIT) on 15 February 2010. Figures for 2010-11 relate to appeals dealt with by Immigration Judges at the FTIAC. Figures for 2009-10 relate to appeals dealt with by Immigration Judges at the AIT or FTIAC. Figures for 2008-09 relate to appeals dealt with by Immigration Judges in AIT.

<sup>2</sup> Prior to 2010-11 EAT disposals exclude appeals rejected, struck out or withdrawn prior to registration.

From Q1 2010-11 onwards, disposals include appeals rejected, struck out or withdrawn prior to registration

<sup>3</sup> Employment Tribunal disposals may include a small undercount due to a change of computer system during the year

<sup>4</sup> Data for Q4 2008-09 is the best information available, as a quarterly reconciliation was not undertaken for this year.

Table 1.2a Employment Tribunal Disposals by Jurisdiction

	JURISDICTIONS DISPOSED <sup>1</sup>					Number
	2010-11					
	Q1	Q2	Q3	Q4	Annual Total	
Unfair dismissal	12,900	11,800	10,600	14,300	49,600	
Unauthorised deductions (Formerly Wages Act)	9,200	9,300	8,700	11,000	38,200	
Breach of contract	8,700	7,600	7,000	8,500	31,800	
Redundancy pay	4,400	3,100	2,900	3,700	14,100	
Sex discrimination	3,700	3,000	3,700	5,100	15,600	
Race discrimination	1,200	1,200	1,200	1,300	4,900	
Disability discrimination	1,700	1,600	1,600	1,900	6,800	
Religious belief discrimination	220	200	190	240	850	
Sexual orientation discrimination	150	170	160	180	660	
Age discrimination	910	740	710	1,300	3,700	
Working time	6,700	5,700	5,200	6,500	24,100	
Equal pay	7,000	5,000	4,900	8,800	25,600	
National minimum wage	130	130	93	250	600	
Others	6,200	9,700	5,400	6,100	27,400	
<b>All</b>	<b>63,100</b>	<b>59,100</b>	<b>52,500</b>	<b>69,300</b>	<b>244,000</b>	

	WITHDRAWN					Number/Percentage				
	2010-11									
	Q1	Q2	Q3	Q4	Annual Total					
Unfair dismissal	3,300	25	2,900	25	2,400	22	3,700	26	12,300	25
Unauthorised deductions (Formerly Wages Act)	2,700	29	2,900	31	3,100	36	4,000	36	12,600	33
Breach of contract	2,100	24	1,600	21	1,500	21	2,100	24	7,300	23
Redundancy pay	1,300	30	700	23	610	21	1,100	29	3,700	27
Sex discrimination	1,200	33	1,200	41	2,200	59	2,900	57	7,600	49
Race discrimination	340	27	340	29	330	28	350	27	1,400	28
Disability discrimination	520	31	490	31	510	31	560	29	2,100	31
Religious belief discrimination	68	31	66	33	52	27	62	26	250	29
Sexual orientation discrimination	46	30	53	32	47	30	59	32	210	31
Age discrimination	290	32	250	34	220	31	700	54	1,500	40
Working time	1,900	28	1,500	26	1,100	21	1,800	28	6,300	26
Equal pay	3,700	53	2,900	58	3,500	72	5,100	59	15,300	60
National minimum wage	20	15	34	27	20	22	43	17	120	20
Others	2,000	32	1,700	18	1,800	34	2,100	35	7,700	28
<b>All</b>	<b>19,500</b>	<b>31</b>	<b>16,700</b>	<b>28</b>	<b>17,400</b>	<b>33</b>	<b>24,600</b>	<b>36</b>	<b>78,300</b>	<b>32</b>

	ACAS CONCILIATED							Number/Percentage		
	2010-11									
	Q1	Q2	Q3	Q4	Annual Total					
Unfair dismissal	5,500	42	4,900	42	4,800	45	5,400	38	20,500	41
Unauthorised deductions (Formerly Wages Act)	2,800	30	3,000	32	2,200	25	2,500	23	10,400	27
Breach of contract	2,600	30	2,400	32	2,500	35	2,700	32	10,300	32
Redundancy pay	680	16	600	19	660	23	620	17	2,600	18
Sex discrimination	1,500	40	1,100	37	660	18	1,100	21	4,300	28
Race discrimination	470	38	410	34	410	35	460	36	1,700	36
Disability discrimination	770	46	700	45	730	45	920	48	3,100	46
Religious belief discrimination	82	38	61	30	60	31	86	36	290	34
Sexual orientation discrimination	67	44	71	43	56	36	72	39	270	41
Age discrimination	350	38	290	40	280	39	380	29	1,300	35
Working time	1,700	26	1,600	29	1,700	33	2,000	30	7,100	29
Equal Pay	1,300	18	1,100	22	180	4	490	6	3,000	12
National minimum wage	59	45	46	36	38	41	54	22	200	33
Others	1,700	27	1,500	16	1,500	27	1,600	26	6,300	23
<b>All</b>	<b>19,500</b>	<b>31</b>	<b>17,900</b>	<b>30</b>	<b>15,700</b>	<b>30</b>	<b>18,300</b>	<b>26</b>	<b>71,400</b>	<b>29</b>

	STRUCK OUT (NOT AT A HEARING)							Number/Percentage		
	2010-11									
	Q1	Q2	Q3	Q4	Annual Total					
Unfair dismissal	1,200	9	900	8	830	8	2,400	17	5,400	11
Unauthorised deductions (Formerly Wages Act)	930	10	680	7	920	11	910	8	3,400	9
Breach of contract	520	6	690	9	600	9	890	10	2,700	8
Redundancy pay	240	5	310	10	380	13	470	13	1,400	10
Sex discrimination	640	17	420	14	610	16	810	16	2,500	16
Race discrimination	110	9	120	10	130	11	150	12	500	10
Disability discrimination	120	7	120	7	110	7	160	8	510	7
Religious belief discrimination	12	6	23	12	26	14	32	14	93	11
Sexual orientation discrimination	14	9	14	8	24	15	18	10	70	11
Age discrimination	110	12	67	9	80	11	98	8	350	10
Working time	330	5	490	9	460	9	590	9	1,900	8
Equal pay	2,000	28	920	19	1,200	24	1,300	14	5,300	21
National minimum wage	11	8	4	3	8	9	14	6	37	6
Others	350	6	390	4	250	5	430	7	1,400	5
<b>All</b>	<b>6,500</b>	<b>10</b>	<b>5,200</b>	<b>9</b>	<b>5,600</b>	<b>11</b>	<b>8,300</b>	<b>12</b>	<b>25,500</b>	<b>10</b>

<sup>1</sup> Excludes a small proportion of cases due to a change of computer system during the year.

**Table 1.2a Employment Tribunal Disposals by Jurisdiction**

		SUCCESSFUL AT TRIBUNAL							Number/Percentage	
		2010-11								
		Q1	Q2	Q3	Q4	Annual Total				
Unfair dismissal	1,100	8	1,100	10	970	9	990	7	4,200	8
Unauthorised deductions (Formerly Wages Act)	1,200	14	1,200	13	1,200	14	1,800	16	5,400	14
Breach of contract	1,800	21	1,200	16	1,200	17	1,200	14	5,400	17
Redundancy pay	1,300	29	710	23	560	20	690	19	3,200	23
Sex discrimination	87	2	53	2	68	2	80	2	290	2
Race discrimination	35	3	35	3	42	4	36	3	150	3
Disability discrimination	39	2	54	3	56	3	42	2	190	3
Religious belief discrimination	7	3	8	4	3	2	9	4	27	3
Sexual orientation discrimination	7	5	2	1	4	3	9	5	22	3
Age discrimination	39	4	18	2	17	2	16	1	90	2
Working time	1,600	23	940	16	940	18	960	15	4,400	18
Equal pay	21	0	30	1	8	0	220	2	280	1
National minimum wage	19	15	24	19	13	14	19	8	75	13
Others	1,000	17	1,200	12	1,100	21	1,100	18	4,400	16
<b>All</b>	<b>8,300</b>	<b>13</b>	<b>6,600</b>	<b>11</b>	<b>6,200</b>	<b>12</b>	<b>7,100</b>	<b>10</b>	<b>28,100</b>	<b>12</b>

		DISMISSED AT A PRELIMINARY HEARING							Number/Percentage	
		2010-11								
		Q1	Q2	Q3	Q4	Annual Total				
Unfair dismissal	400	3	350	3	290	3	350	2	1,400	3
Unauthorised deductions (Formerly Wages Act)	130	1	180	2	150	2	210	2	670	2
Breach of contract	200	2	200	3	170	2	210	2	770	2
Redundancy pay	48	1	50	2	37	1	67	2	200	1
Sex discrimination	59	2	52	2	40	1	47	1	200	1
Race discrimination	57	5	77	6	61	5	61	5	260	5
Disability discrimination	44	3	48	3	59	4	52	3	200	3
Religious belief discrimination	16	7	7	4	17	9	13	6	53	6
Sexual orientation discrimination	4	3	6	4	4	3	8	4	22	3
Age discrimination	33	4	27	4	31	4	29	2	120	3
Working time	150	2	140	2	100	2	140	2	530	2
Equal pay	11	0	7	0	6	0	12	0	36	0
National minimum wage	0	0	2	2	6	6	3	1	11	2
Others	180	3	83	1	140	3	110	2	520	2
<b>All</b>	<b>1,300</b>	<b>2</b>	<b>1,200</b>	<b>2</b>	<b>1,100</b>	<b>2</b>	<b>1,300</b>	<b>2</b>	<b>5,000</b>	<b>2</b>

		UNSUCCESSFUL AT HEARING							Number/Percentage	
		2010-11								
		Q1	Q2	Q3	Q4	Annual Total				
Unfair dismissal	1,300	10	1,200	10	1,200	11	1,100	8	4,800	10
Unauthorised deductions (Formerly Wages Act)	510	6	490	5	520	6	610	6	2,100	6
Breach of contract	610	7	560	7	510	7	590	7	2,300	7
Redundancy pay	190	4	140	4	170	6	190	5	680	5
Sex discrimination	170	5	140	4	120	3	160	3	590	4
Race discrimination	210	17	200	16	180	16	210	16	800	16
Disability discrimination	160	9	150	10	160	10	180	9	640	9
Religious belief discrimination	29	13	35	18	29	15	30	13	120	15
Sexual orientation discrimination	12	8	19	12	17	11	14	8	62	9
Age discrimination	88	10	79	11	80	11	68	5	320	9
Working time	380	6	290	5	360	7	350	5	1,400	6
Equal pay	31	0	16	0	16	0	1,700	19	1,700	7
National minimum wage	12	9	11	9	2	2	110	43	130	22
Others	370	6	4,500	46	320	6	510	8	5,700	21
<b>All</b>	<b>4,000</b>	<b>6</b>	<b>7,800</b>	<b>13</b>	<b>3,600</b>	<b>7</b>	<b>5,800</b>	<b>8</b>	<b>21,200</b>	<b>9</b>

		DEFAULT JUDGMENT							Number/Percentage	
		2010-11								
		Q1	Q2	Q3	Q4	Annual Total				
Unfair dismissal	280	2	340	3	230	2	350	2	1,200	2
Unauthorised deductions (Formerly Wages Act)	920	10	970	10	670	8	1,000	9	3,600	9
Breach of contract	870	10	870	11	610	9	850	10	3,200	10
Redundancy pay	630	14	580	19	440	15	590	16	2,200	16
Sex discrimination	26	1	16	1	22	1	23	0	87	1
Race discrimination	11	1	7	1	11	1	19	1	48	1
Disability discrimination	13	1	4	0	10	1	21	1	48	1
Religious belief discrimination	3	1	0	0	5	3	4	2	12	1
Sexual orientation discrimination	2	1	0	0	4	3	3	2	9	1
Age discrimination	2	0	5	1	3	0	11	1	21	1
Working time	670	10	730	13	510	10	700	11	2,600	11
Equal pay	5	0	1	0	0	0	1	0	7	0
National minimum wage	9	7	7	5	6	6	8	3	30	5
Others	570	9	280	3	290	5	230	4	1,400	5
<b>All</b>	<b>4,000</b>	<b>6</b>	<b>3,800</b>	<b>6</b>	<b>2,800</b>	<b>5</b>	<b>3,800</b>	<b>5</b>	<b>14,400</b>	<b>6</b>

Source: Tribunals Quarterly and Annual Reconciled Returns

**Table 1.2b Immigration and Asylum Disposals by Case Type**

Number

	2008-09	2009-10	2010-11				Annual Total
	Q4	Q4	Q1	Q2	Q3	Q4	
<b>First Tier Tribunal (Immigration and Asylum Chamber)</b>	48,800	47,800	37,100	40,900	37,800	38,800	154,700
Asylum	2,700	4,900	4,700	4,600	3,900	4,000	17,100
Managed Migration	5,700	10,700	10,400	13,100	10,800	10,900	45,200
Entry Clearance	20,800	11,100	7,900	8,200	8,400	8,200	32,700
Family Visit Visa	19,500	20,900	13,900	14,900	14,600	15,300	58,600
Deport and others	100	200	230	280	230	310	1,100

Source: Immigration and Asylum Quarterly and Annual Reconciled Returns

Figures may not add to totals because of rounding

. Not applicable

.. Not available

- Small Value

0 Nil

(r) Revised data

(p) Provisional data

**Table 1.2c Social Security and Child Support Disposals by Benefit Type**

Benefit	2009-10		2010-11			Number
	Q4	Q1	Q2	Q3	Q4	Annual Total
Attendance Allowance	840	850	860	850	1,000	3,600
Disability Living Allowance	15,500	15,600	16,300	15,100	18,200	65,100
Bereavement Benefit	120	110	100	110	150	480
Carer's Allowance	260	220	340	370	400	1,300
Child Benefit Lone Parent	370	350	450	480	510	1,800
Child Support Allowance	880	860	870	860	990	3,600
Tax Credits	350	510	700	730	860	2,800
Credits (Other)	0	0	0	-	-	-
COEG	-	0	0	0	-	-
Compensation Recovery Unit	86	71	79	100	88	340
Housing/Council Tax benefit	3,200	2,800	3,100	3,100	3,300	12,300
Disability Working Allowance	0	0	0	-	-	-
Employment Support Allowance	33,600	35,500	42,700	45,900	52,500	176,600
Health in Pregnancy Grant	230	160	130	83	120	480
Home Responsibilities Protection	10	7	11	-	10	30
Incapacity Benefit	11,200	10,100	9,500	8,400	9,400	37,400
Income Support	3,800	3,500	3,900	4,100	4,300	15,700
Industrial Death Benefit	0	-	-	0	0	-
Industrial Injuries Disablement Benefit	1,400	1,900	2,100	2,000	2,100	8,100
Job Seekers Allowance	7,500	7,700	10,000	11,400	14,000	43,100
Lookalikes	-	-	-	0	-	6
Maternity Benefit/Allowances	54	58	69	60	47	230
Others (Extinct/rare Benefits)	20	18	15	28	18	79
Penalty Proceedings	0	0	0	-	0	-
Pensions Credit	430	360	390	430	480	1,700
Retirement Pension	200	190	190	210	270	870
Severe Disablement Benefit/Allowance	22	27	27	36	28	120
Social Fund	980	1,000	1,200	1,000	1,300	4,500
Vaccine Damage Appeals	-	0	-	-	-	8
<b>Total</b>	<b>81,000</b>	<b>81,800</b>	<b>93,000</b>	<b>95,300</b>	<b>110,100</b>	<b>380,200</b>

Source: SSCS Quarterly and Annual Reconciled Returns

Figures may not add to totals because of rounding

. Not applicable

.. Not available

- Small Value

0 Nil

(r) Revised data

(p) Provisional data

Table 1.2d Social Security and Child Support Outcomes by Benefit Type

Benefit	2009-10 Quarter 4				
	Cleared at Hearing <sup>1</sup>	Decision In Favour <sup>2</sup>		Decision Upheld <sup>3</sup>	
		No.	%	No.	%
Attendance Allowance	200	37	19	160	80
Disability Living Allowance	12,200	4,900	40	7,100	58
Bereavement Benefit	100	7	7	92	92
Carer's Allowance	170	25	15	140	83
Child Benefit Lone Parent	240	23	10	210	89
Child Support Allowance	650	260	41	360	56
Tax Credits	200	32	16	170	83
Credits (Other)	0	0	0	0	0
COEG	0	0	0	0	0
Compensation Recovery Unit	47	19	40	27	57
Housing/Council Tax benefit	2,100	480	23	1,600	76
Disability Working Allowance	0	0	0	0	0
Employment Support Allowance	25,000	9,900	39	15,000	60
Health in Pregnancy Grant	140	8	6	140	94
Home Responsibilities Protection	8	0	0	7	88
Incapacity Benefit	9,100	4,600	51	4,400	49
Income Support	2,500	730	29	1,700	69
Industrial Death Benefit	0	0	0	0	0
Industrial Injuries Disablement Benefit	1,000	380	37	630	61
Job Seekers Allowance	4,400	750	17	3,700	83
Lookalikes	-	0	0	-	-
Maternity Benefit/Allowances	40	-	-	38	95
Others (Extinct/rare Benefits)	9	0	-	7	78
Penalty Proceedings	0	0	0	0	0
Pensions Credit	260	60	23	190	75
Retirement Pension	150	7	5	140	95
Severe Disablement Benefit/Allowance	17	6	35	11	65
Social Fund	700	100	15	590	85
Vaccine Damage Appeals	-	0	0	-	-
<b>Total</b>	<b>59,200</b>	<b>22,300</b>	<b>38</b>	<b>36,400</b>	<b>62</b>

Benefit	2010-11																									
	Quarter 1					Quarter 2					Quarter 3					Quarter 4					Annual Total					
	Cleared at Hearing <sup>1</sup>	Decision In Favour <sup>2</sup>		Decision Upheld <sup>3</sup>		Cleared at Hearing <sup>1</sup>	Decision In Favour <sup>2</sup>		Decision Upheld <sup>3</sup>		Cleared at Hearing <sup>1</sup>	Decision In Favour <sup>2</sup>		Decision Upheld <sup>3</sup>		Cleared at Hearing <sup>1</sup>	Decision In Favour <sup>2</sup>		Decision Upheld <sup>3</sup>		Cleared at Hearing <sup>1</sup>	Decision In Favour <sup>2</sup>		Decision Upheld <sup>3</sup>		
No.	%	No.	%	No.	%	No.	%	No.	%	No.	%	No.	%	No.	%	No.	%	No.	%	No.	%	No.	%	No.	%	
Attendance Allowance	600	150	24	450	74	580	140	24	430	74	550	120	22	420	76	670	170	26	490	73	2,400	580	24	1,800	74	
Disability Living Allowance	12,500	4,900	39	7,400	59	12,700	4,800	38	7,800	61	11,600	4,400	38	7,000	61	14,100	5,300	38	8,600	61	50,900	19,400	38	30,800	60	
Bereavement Benefit	75	7	9	68	91	80	-	-	76	95	72	15	21	56	78	110	8	7	100	93	340	34	10	300	90	
Carer's Allowance	140	12	9	130	91	200	22	11	170	87	250	22	9	220	91	260	38	15	220	85	850	94	11	750	88	
Child Benefit Lone Parent	210	17	8	190	91	260	30	11	230	88	300	17	6	290	94	330	30	9	300	91	1,100	94	8	1,000	91	
Child Support Allowance	600	280	47	310	51	630	280	44	330	53	630	240	39	360	58	700	280	40	400	57	2,600	1,100	42	1,400	55	
Tax Credits	300	28	9	270	91	440	32	7	400	92	420	57	14	360	86	470	41	9	420	89	1,600	160	10	1,400	89	
Credits (Other)	0	0	0	0	0	0	0	0	0	0	0	0	0	0	0	-	0	0	-	-	-	0	0	-	-	-
COEG	0	0	0	0	0	0	0	0	0	0	0	0	0	0	0	-	0	0	-	-	-	0	0	-	-	-
Compensation Recovery Unit	43	16	37	27	63	49	20	41	29	59	57	24	42	32	56	41	12	29	29	71	190	72	38	120	62	
Housing/Council Tax benefit	1,900	500	27	1,400	72	2,000	410	21	1,500	78	2,200	510	23	1,700	76	2,300	500	22	1,800	77	8,300	1,900	23	6,300	76	
Disability Working Allowance	0	0	0	0	0	0	0	0	0	0	-	0	0	-	-	-	-	100	0	0	-	-	-	-	-	-
Employment Support Allowance	26,200	10,300	39	15,600	60	31,000	11,400	37	19,300	62	31,800	11,500	36	20,000	63	38,200	14,400	38	23,500	62	127,100	47,600	37	78,400	62	
Health in Pregnancy Grant	91	10	11	81	89	72	6	8	66	92	58	-	-	56	97	66	-	-	63	96	290	21	7	270	93	
Home Responsibilities Protection	-	0	0	-	-	8	0	0	8	100	-	0	0	-	-	7	0	0	7	100	21	0	0	21	100	
Incapacity Benefit	8,400	4,400	52	4,000	47	7,900	3,900	49	4,000	50	7,000	3,300	48	3,600	52	7,900	4,000	50	3,900	49	31,200	15,600	50	15,500	50	
Income Support	2,300	720	32	1,500	67	2,600	670	26	1,900	73	2,700	760	28	1,900	70	3,000	820	27	2,200	72	10,500	3,000	28	7,400	71	
Industrial Death Benefit	-	0	0	-	-	-	-	100	0	0	-	0	0	-	-	0	0	0	0	0	-	-	-	-	-	-
Industrial Injuries Disablement Benefit	1,400	530	37	860	60	1,700	540	32	1,100	64	1,500	520	34	940	62	1,600	580	35	1,000	62	6,300	2,200	35	3,900	62	
Job Seekers Allowance	4,700	720	15	4,000	84	6,300	750	12	5,500	88	7,500	1,000	14	6,400	86	9,000	1,100	13	7,900	87	27,500	3,600	13	23,800	86	
Lookalikes	-	0	0	-	-	-	-	-	0	0	0	0	0	-	-	-	-	-	-	-	5	-	-	-	-	-
Maternity Benefit/Allowances	41	6	15	35	85	38	5	13	33	87	38	-	-	34	89	32	-	-	30	94	150	17	11	130	89	
Others (Extinct/rare Benefits)	8	-	-	5	63	11	5	45	6	55	24	7	29	14	58	11	-	-	7	64	54	19	35	32	59	
Penalty Proceedings	0	0	0	0	0	0	0	0	0	0	-	-	-	0	0	0	0	0	0	0	-	-	-	0	0	
Pensions Credit	230	47	20	180	78	260	60	23	200	76	270	84	32	180	68	280	54	19	220	79	1,000	250	23	790	75	
Retirement Pension	130	10	8	120	92	120	-	-	120	97	150	11	7	140	92	200	19	10	170	89	600	44	7	550	92	
Severe Disablement Benefit/Allowance	21	8	38	13	62	24	9	38	15	63	22	10	45	11	50	21	5	24	16	76	88	32	36	55	63	
Social Fund	700	68	10	640	90	910	97	11	810	89	750	68	9	680	91	920	70	8	850	92	3,300	300	9	3,000	91	
Vaccine Damage Appeals	0	0	0	0	0	-	-	-	-	-	-	0	0	-	-	-	0	0	-	-	6	-	-	-	5	83
<b>Total</b>	<b>60,500</b>	<b>22,700</b>	<b>38</b>	<b>37,200</b>	<b>61</b>	<b>67,800</b>	<b>23,200</b>	<b>34</b>	<b>44,000</b>	<b>65</b>	<b>67,800</b>	<b>22,700</b>	<b>33</b>	<b>44,400</b>	<b>66</b>	<b>80,300</b>	<b>27,400</b>	<b>34</b>	<b>52,100</b>	<b>65</b>	<b>276,400</b>	<b>96,000</b>	<b>35</b>	<b>177,700</b>	<b>64</b>	

Figures may not add to totals because of rounding

- Not applicable
- Not available
- Small Value

0 Nil

- (f) Revised data
- (g) Provisional data

<sup>1</sup> The total number of cases cleared at hearing includes some withdrawals. Thus, it is not the total of those decisions in favour and those upheld.

<sup>2</sup> Decision in favour of the appellant

<sup>3</sup> Decision made by 1st Tier Agency upheld by the Tribunal

Source: SSCS Quarterly and Annual Reconciled Returns

Table 1.2e Immigration and Asylum Outcomes by Case Type <sup>1</sup>

	Number/Percentage											
	2008-09						2009-10					
	Q4			Q4			Q4			Q4		
	Allowed No.	%	Dismissed No.	%	Withdrawn No.	%	Allowed No.	%	Dismissed No.	%	Withdrawn No.	%
<b>First Tier Tribunal (Immigration and Asylum Chamber)</b>	<b>18,900</b>	<b>39</b>	<b>26,400</b>	<b>54</b>	<b>3,600</b>	<b>7</b>	<b>19,000</b>	<b>40</b>	<b>24,300</b>	<b>51</b>	<b>4,500</b>	<b>9</b>
Asylum	700	26	1,900	69	160	6	1,300	27	3,300	68	240	5
Managed Migration	2,600	46	2,600	46	470	8	4,800	45	4,800	45	1,100	10
Entry Clearance	7,000	34	12,000	58	1,700	8	3,800	34	5,500	49	1,900	17
Family Visit Visa	8,500	44	9,800	50	1,200	6	9,000	43	10,600	51	1,300	6
Deport and others	24	24	66	66	10	10	42	21	140	70	19	9

	Number/Percentage																													
	2010-11						2010-11						2010-11																	
	Q1			Q2			Q3			Q4			Annual Total																	
	Allowed No.	%	Dismissed No.	%	Withdrawn No.	%	Allowed No.	%	Dismissed No.	%	Withdrawn No.	%	Allowed No.	%	Dismissed No.	%	Withdrawn No.	%												
<b>First Tier Tribunal (Immigration and Asylum Chamber)</b>	<b>15,500</b>	<b>42</b>	<b>17,900</b>	<b>48</b>	<b>3,800</b>	<b>10</b>	<b>17,000</b>	<b>42</b>	<b>17,700</b>	<b>43</b>	<b>6,200</b>	<b>15</b>	<b>14,800</b>	<b>39</b>	<b>15,700</b>	<b>42</b>	<b>7,300</b>	<b>19</b>	<b>15,500</b>	<b>40</b>	<b>16,800</b>	<b>43</b>	<b>6,400</b>	<b>17</b>	<b>62,800</b>	<b>41</b>	<b>68,100</b>	<b>44</b>	<b>23,800</b>	<b>15</b>
Asylum	1,300	27	3,200	67	270	6	1,200	26	3,100	67	280	6	1,000	27	2,600	66	280	7	1,100	27	2,700	67	250	6	4,600	27	11,400	67	1,100	6
Managed Migration	4,400	42	5,000	48	1,000	10	7,000	54	4,700	36	1,300	10	5,800	54	4,000	37	1,000	10	5,600	51	4,200	38	1,200	11	22,800	50	17,800	39	4,600	10
Entry Clearance	3,400	44	3,300	41	1,200	15	3,300	40	3,100	38	1,700	21	3,000	36	3,000	36	2,400	28	3,000	36	2,900	36	2,400	29	12,700	39	12,300	38	7,700	23
Family Visit Visa	6,300	45	6,300	45	1,300	9	5,400	36	6,600	45	2,800	19	4,900	34	6,100	42	3,600	25	5,800	38	6,900	45	2,700	17	22,400	38	25,900	44	10,400	18
Deport and others	60	26	150	64	22	10	81	29	170	61	28	10	50	21	160	70	21	9	92	29	200	62	26	8	280	27	680	64	97	9

Source: Immigration and Asylum Quarterly and Annual Reconciled Returns

Figures may not add to totals because of rounding

. Not applicable

.. Not available

- Small Value

0 Nil

(r) Revised data

(p) Provisional data

<sup>1</sup> Figures are based upon decisions at a hearing and on papers.



**Table 1.3 Tribunals Caseload Outstanding<sup>1</sup> by Jurisdiction**

	2008-09	2009-10	2010-11			
	Q4	Q4	Q1 <sup>2</sup>	Q2 <sup>2</sup>	Q3	Q4
<b>Tribunals</b>	<b>462,500</b>	<b>628,800</b>	<b>658,000</b>	<b>706,500</b>	<b>722,800</b>	<b>751,300</b>
IA - Immigration Judge	88,400	58,000	52,300	50,300	45,000	42,400
Employment Appeal	..	..	360	380	400	370
Employment <sup>2</sup>	290,200	404,800	416,600	442,700	453,600	484,300
Singles	29,800	33,800	31,600	30,500	31,400	28,500
Multiples	260,400	371,000	385,000	412,100	422,200	455,800
Social Security and Child Support	66,400	138,800	158,400	182,600	193,400	194,200
Mental Health	..	4,800	4,700	4,800	4,300	4,500
Adjudicator to HM Land Registry	1,600	1,500	1,500	1,400	1,300	1,200
Asylum Support	43	320	270	150	160	140
Care Standards	96	110	110	110	58	45
Charities	-	0	0	-	-	-
Claims Management Services	0	-	-	-	-	5
Consumer Credit Appeals	5	0	6	7	8	8
Criminal Injuries Compensation	1,700	2,800	2,800	2,500	2,300	1,900
Environmental Jurisdiction	.	.	0	0	0	0
Estate Agents Appeals	-	-	-	0	0	0
Financial Services and Markets	18	19	24	35	470	710
First Tier Immigration	-	-	-	-	-	-
Gambling Appeals	0	0	-	-	-	-
Gender Recognition Panel <sup>3</sup>	65	93	120	120	110	80
Information	150	94	120	98	95	130
Lands	1,400	1,500	1,600	1,400	1,100	640
Local Government Standards in England	.	14	15	14	5	6
Pensions Regulator	0	-	-	5	8	8
Primary Health Lists	.	57	37	37	43	42
Reserve Forces Appeals	.	-	-	0	-	-
Special Commissioners (Income Tax)	540	.	.	.	.	.
Special Educational Needs and Disability	940	..	1,300	1,400	1,400	1,000
Tax first tier	.	13,500	15,600	16,300	16,700	17,600
Transport	150	120	120	120	120	120
Upper Tribunal (Administrative Appeals Chamber)	920	1,100	1,200	1,100	1,200	1,100
VAT and Duties	9,000	.	.	.	.	.
War Pensions and Armed Forces Compensation	850	1,200	1,000	980	1,000	950

Figures may not add to totals because of rounding

. Not applicable

.. Not available

- Small Value

0 Nil

(r) Revised data

(p) Provisional data

<sup>1</sup> As on the last day of the period

<sup>2</sup> The Employment Tribunal caseload outstanding for the first and second quarters of 2010-11 only have a partial caseload for Nottingham and Leicester (see Explanatory Notes) and Nottingham and Leicester caseload outstanding in Q3 2010-11 may be incomplete.



Table 1.4 Tribunals Performance Indicators by Jurisdiction (continued)

		Percentage								
PI Description	Period	Target	2008-09	2009-10	2010-11					
			Q4	Q4	Q1	Q2	Q3	Q4	Annual	
<b>Gambling Appeals</b>	The percentage of cases disposed of within 30 weeks of receipt	No Change	75	~	~	~	~	100	0	67
<b>Gender Recognition Panel</b>	The percentage of cases disposed of within 20 weeks of receipt	No Change	75	51	75	77	71	74	79	76
<b>Information Rights</b>	The percentage of cases disposed of within 30 weeks of receipt	No Change	75	41	66	85	67	73	73	74
<b>Lands</b>	The percentage of cases disposed of within 50 weeks of registration	Pre 04/2010	75	71	68	.	.	.	.	.
	Cat 1 The percentage of cases disposed of in 24 weeks of registration	Post 04/2010	75	.	.	97	94	83	88	90
	Cat 2 The percentage of cases disposed of in 70 weeks of registration	Post 04/2010	75	.	.	77	49	32	26	41
<b>Local Government Standards in England</b>	The percentage of cases where a decision was issued within 16 weeks of receipt of the reference	Pre 04/2010	95	.	89	.	.	.	.	.
	The percentage of appeals to be held and determined within 16 weeks of receipt.	Post 04/2010	95	.	.	89	82	60	80	77
<b>Pensions Regulator</b>	The percentage of cases disposed of within 50 weeks of receipt	No Change	75	~	~	100	~	~	~	100
<b>Primary Health Lists</b>	The percentage of cases where the decision was issued within 16 weeks of receipt of reference	No Change	95	.	~	79	67	79	72	74
<b>Reserve Forces Appeals</b>	The percentage of determinations (from hearing to judgement) issued within 4 weeks	No Change	85	.	100	100	~	100	100	100
	The percentage of claims served (accepted) within 5 days	Post 04/2010	100	.	.	100	100	100	100	100
<b>Special Commissioners (Income Tax)</b>	The percentage of cases disposed of within 50 weeks of receipt	Pre 04/2010	75	74	.	.	.	.	.	.
<b>Special Educational Needs and Disability</b>	The percentage of cases disposed of within 22 weeks of receipt	No Change	75	52	82	83	88	82	81	84
<b>Tax first tier</b>	The percentage of standard/complex cases disposed of within 70 weeks of receipt	No Change	75	.	33	56	61	60	56	58
	The percentage of paper cases disposed of in 20 weeks	Post 04/2010	75	.	.	67	66	84	76	73
	The percentage of basic cases disposed of in 20 weeks	Post 04/2010	75	.	.	62	69	77	86	74
<b>Transport</b>	The percentage of cases disposed of within 16 weeks of receipt	No Change	75	95	87	90	87	84	91	88
<b>Upper Tribunal (Administrative Appeals Chamber)</b>	The percentage of all work disposed of within 30 weeks of receipt	Pre 04/2010	75	95	91	.	.	.	.	.
	The percentage of appeals disposed of within 20 weeks of receipt	Post 04/2010	75	.	.	49	55	60	51	53
	The percentage of applications for Leave to Appeal to be disposed within 10 weeks of receipt	Post 04/2010	75	.	.	62	56	62	47	57
<b>VAT and Duties</b>	The percentage of Category 1 and 3 cases disposed of within 90 weeks of receipt	Pre 04/2010	75	47	.	.	.	.	.	.
	The percentage of Category 2 cases disposed of within 35 weeks of receipt	Pre 04/2010	75	77	.	.	.	.	.	.
<b>War Pensions and Armed Forces Compensation</b>	The percentage of cases disposed of within 20 weeks of receipt	No Change	75	82	68	56	58	50	48	53

Source: Tribunals Quarterly and Annual Reconciled Returns

Figures may not add to totals because of rounding  
 . Not applicable  
 .. Not available  
 - Small Value  
 ~ No cases dealt with so KPI could not be calculated

0 Nil  
 (r) Revised data  
 (p) Provisional data

<sup>1</sup> A small number of cases for the Employment Tribunal may be excluded from the 2010-11 figures due to a change of computer system during the year

<sup>2</sup> Promulgation is the formal publication of the decision

<sup>3</sup> A case is considered to be disposed of when a decision has been made on the case and all work on the case has been completed

<sup>4</sup> A case is considered to be determined when a decision has been made on the case

<sup>5</sup> Data for Q4 2008/09 is the best information available, as quarterly reconciliations were not undertaken for this year.