



Ministry of
JUSTICE



Criminal Justice Statistics
Quarterly Update to June 2011
Ministry of Justice
Statistics bulletin

Published 24 November 2011

Contents

Introduction	2
Main findings [Tables Q1.1 – Q1.5].....	3
Out of Court Disposals [Tables Q2.1 – Q2.5].....	17
Court proceedings.....	26
Remands [Tables Q3.1 – Q3.4]	27
Offenders found guilty [Tables Q4.1 – Q4.3].....	36
Sentencing [Tables Q5.1 – Q5.9].....	43
Sentence outcomes for all offences	43
Sentence outcomes by age band.....	45
Persons sentenced by ethnicity	46
Persons sentenced for indictable offences	47
Offending Histories [Tables Q7.1 – Q7.5, Q7a - Q7l].....	66
First offences and further offences [Tables Q7.1, Q7a and Q7b]	66
Criminal Histories [Tables Q7.4, Q7.5, Q7k, Q7l]	70
Data Improvement Project	78
Explanatory notes	84
Contacts	85

Introduction

This report presents the key trends on the latest twelve months (July 2010 to June 2011) of activity in the Criminal Justice System (CJS) for England and Wales. The court proceedings data for January to June 2011 is provisional. For each chapter a brief description of the mechanism of the procedure is included with an explanation of some of the main actions involved. More detailed analysis is published annually on the full calendar year dataset.

For this edition of the publication there is an additional chapter covering early findings from The Ministry Of Justice (MOJ) Data Improvement Project. The Data Improvement Project was created with the aim of supporting policy development by improving the evidence base of the Ministry of Justice through better use of administrative data by linking data from different sources. The early findings are based on linking MoJ datasets to follow offenders through the criminal justice system.

Alongside the publication is a technical document titled “Criminal Justice Statistics: Background, Definitions and Measurement”. This document provides users with detailed information on the concepts and methods used in compiling this bulletin, including the quality of the data. A copy of the technical document can be found at: www.justice.gov.uk/publications/statistics-and-data/criminal-justice/criminal-annual.htm

Where appropriate comparisons are made between different sources covering activity in the CJS. In particular, comparisons are made to numbers of crimes recorded by the police (often the starting point for crimes dealt with by other CJS agencies) rather than estimates from the British Crime Survey (BCS). The BCS provides robust estimates of trends in crimes against the population resident in households, including those never reported to the police, but excludes other crimes such as those against businesses or so-called ‘victimless’ crime. Therefore police recorded crime provides a more meaningful comparison for measures relating to the wider CJS. Findings from the BCS and recorded crime are published together in statistical bulletins by the Home Office.

The data provides users with information about proven offending and its outcomes in England and Wales. The contents of this bulletin will be of interest to government policy makers in the development of policy and their subsequent monitoring and evaluation. Others will be interested in the way different crimes are dealt with in the Criminal Justice System.

Information about statistical revisions, forthcoming changes and the symbols and conventions used in the bulletin are given in the explanatory notes section.

If you have any feedback, questions or requests for further information about this statistical bulletin, please direct them to the appropriate contact given at the end of this report.

Main findings [Tables Q1.1 – Q1.5]

Overview of the Criminal Justice System in the 12 months ending June 2011

In the 12 months ending June 2011 there were 2.1 million individuals¹ given an out of court disposal or proceeded against at court. Compared with the 12 months to June 2010, there was a 10.3 per cent fall in the use of out of court disposals from 499,800 to 448,500. Over the same period defendants proceeded against fell by 4.4 per cent. This consisted of a 6.2 per cent fall in defendants proceeded against for summary offences and a 0.8 per cent rise in defendants proceeded against for indictable offences.

Table Q1.1: Activity in the Criminal Justice System, 12 months ending June 2010 to 12 months ending June 2011

	12 months ending June 2010	12 months ending June 2011 ^(P)	Percentage change
Out of court disposals	499,770	448,526	-10.3%
<i>Cannabis warnings^(P)</i>	86,362	80,537	-6.7%
<i>Penalty notices for disorder</i>	152,895	132,434	-13.4%
<i>Cautions</i>	260,513	235,555	-9.6%
Defendants proceeded against	1,682,303	1,607,832	-4.4%
<i>Indictable offences</i>	425,903	429,259	0.8%
<i>Summary offences</i>	1,256,400	1,178,573	-6.2%
Defendants convicted	1,391,646	1,336,494	-4.0%
<i>Indictable offences</i>	337,015	348,204	3.3%
<i>Summary offences</i>	1,054,631	988,290	-6.3%
Prison receptions^(A)	92,053	90,032	-2.2%
Probation starts^(B)	182,504	180,075	-1.3%

(A) Receptions for offenders given a custodial sentence (figures include fine defaulters).

(B) Offenders starting Community Order or Suspended Sentence Order supervision by the Probation Service.

(P) Provisional

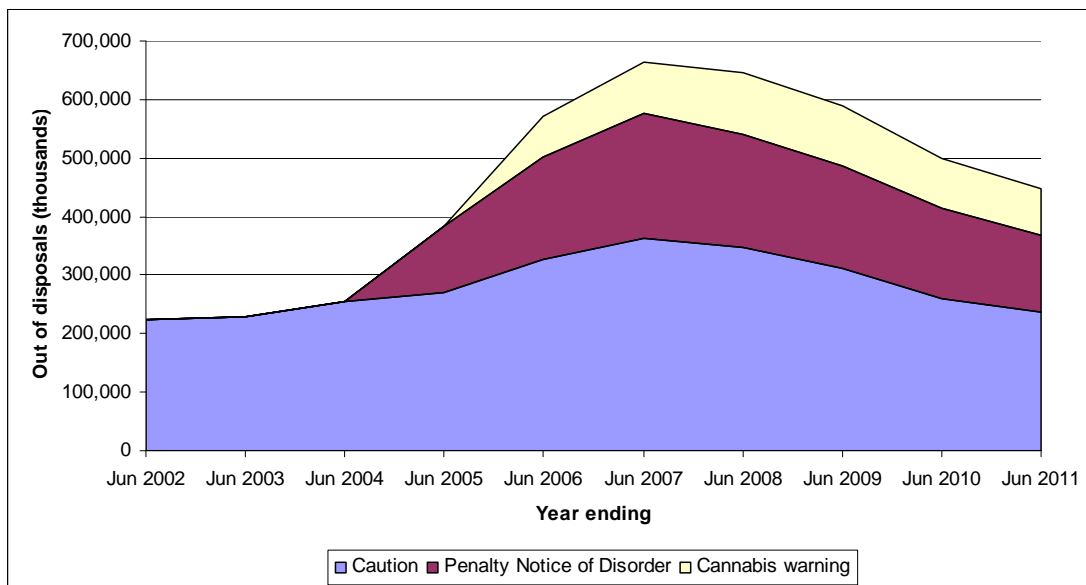
¹ Includes people and companies.

Out of Court Disposals

There were 448,500 out of courts disposals administered in the 12 months ending June 2011, 10.3 per cent fewer than the 499,800 in the 12 months ending June 2010.

Out of court disposals fell in every offence group and by 10.3 per cent overall. This continues the decline since 2007 which coincided with the replacement in April 2008 of a target to increase offences brought to justice, with one placing more emphasis on bringing serious crime to justice. The latter target was subsequently removed in May 2010.

Figure 1.1: Out of court disposals, 12 months ending June 2002 to 12 months ending June 2011



Police cautions

There were 235,600 cautions administered in the 12 months ending June 2011.

- This was 9.6 per cent fewer than the 260,500 administered in the 12 months ending June 2010 and 35.2 per cent fewer than the 363,400 administered in the 12 months ending June 2007 when the use of cautions peaked.
- Fewer cautions were administered in *all* offence groups in the 12 months ending June 2011 except for *drug offences* which increased from, 41,400 to 41,800, *robbery* which increased from 188 to 246 and *sexual offences* which increased from 1,404 to 1,418.
- The decrease in cautions was greatest for *violence against person* which fell 16.7 per cent from 23,900 to 19,900.

Penalty Notices for Disorder (PNDs)

There were 132,400 PNDs issued in the 12 months ending June 2011.

- This was 13.4 per cent fewer than the 152,900 issued in the 12 months ending June 2010 and 38 per cent fewer than the peak of 213,700 issued in the 12 months ending June 2007.
- There were declines in all offences groups except *drug offences*, which increased by 11.2 per cent in the 12 months ending June 2011 to 14,900 from 13,400 in the 12 months ending June 2010.
- There was a decrease of 14.4 per cent (to 36,900) in PNDs issued for *theft and handling stolen goods* in the 12 months ending June 2011.

Cannabis warnings

There were 80,500 *cannabis warnings* issued in the 12 months ending June 2011, 6.7 per cent fewer than the 86,400 warnings issued in the 12 months ending June 2010.

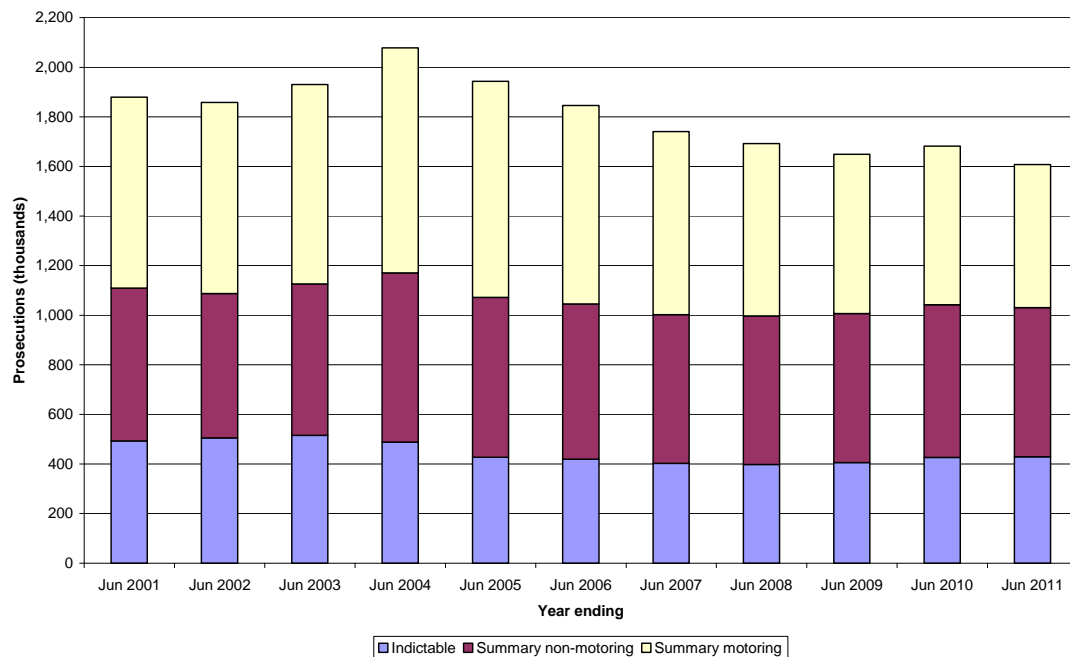
Note - *figures for cannabis warnings appearing in this publication are provisional and may be revised following Home Office validation. Finalised National Statistics will be published by the Home Office in July 2012 by financial year*

Court proceedings

In the 12 months ending June 2011 there were 1.6 million defendants proceeded against in magistrates' courts. This is 4.4 per cent fewer than the 1.7 million defendants proceeded against in the 12 months ending June 2010 and 22.6 per cent fewer than the peak of 2.1 million in the 12 months ending June 2004. The falls in the number of defendants proceeded against both over the last year and since 2004 have been driven by falls in summary motoring and non-motoring offences;

- Proceedings for indictable offences decreased by 12.1 per cent since the 12 months ending June 2004 and increased 0.8 per cent since the past 12 months ending June 2010
- Proceedings for *summary non-motoring offences* decreased by 11.8 per cent since the 12 months ending June 2004 and 2.4 per cent since the past 12 months ending June 2010.
- Proceedings for *summary motoring offences* decreased by 36.4 per cent since the 12 months ending June 2004 and by 9.8 per cent since the last 12 months ending June 2010.
- Of those defendants who were proceeded against at magistrates' courts, 3.2 per cent were remanded in custody at some point. For the more serious indictable offences 9.5 per cent were remanded into custody at some point.

Figure 1. 2: Defendants proceeded against at magistrates' courts by offence type, 12 months ending June 2001 to 12 months ending June 2011



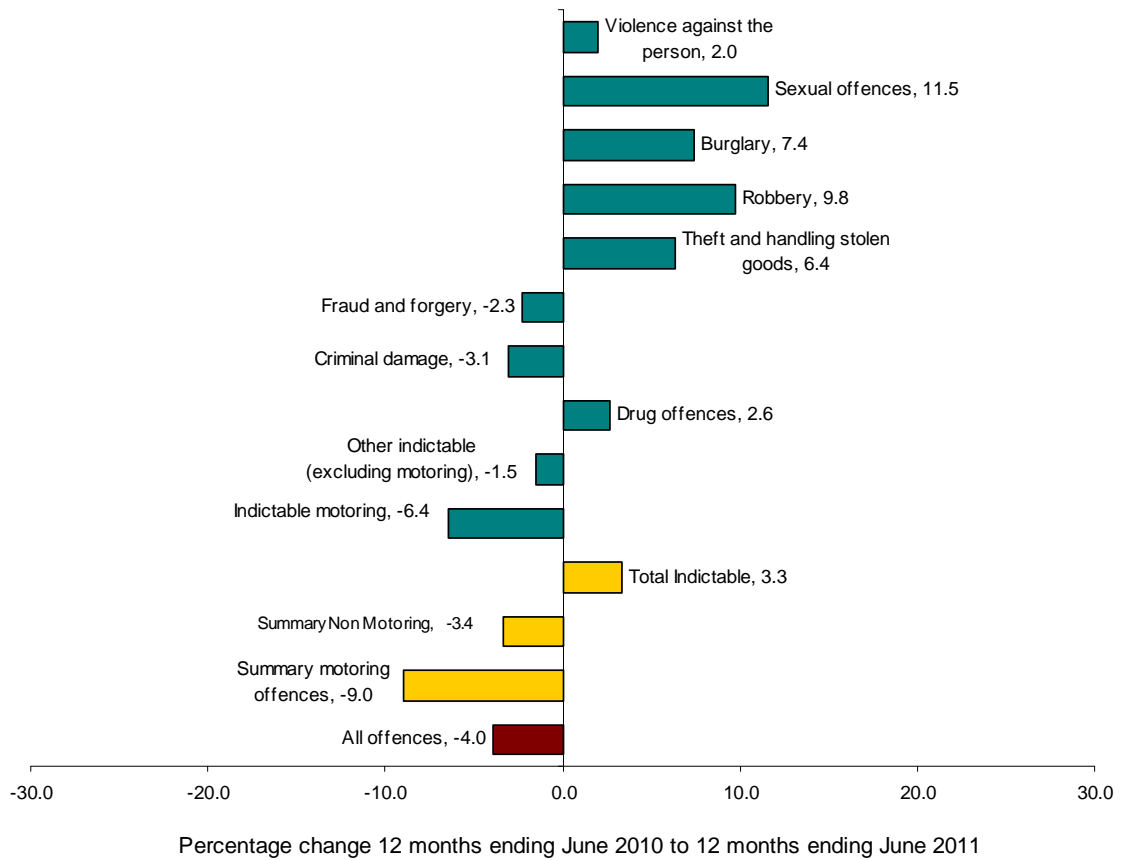
Convictions

In the 12 months ending June 2011 there were 1.3 million offenders convicted of a criminal offence.

- This was 4.0 per cent fewer than the 1.4 million offenders convicted in the 12 months ending June 2010 and 14.7 per cent fewer than the 1.6 million offenders convicted in the 12 months ending June 2004.
- As with the fall in defendants proceeded against, the fall in convictions was largely driven by falls in convictions for summary motoring and non-motoring offences. Convictions for indictable offences increased by 3.3 per cent to 348,200 in the 12 months ending June 2011.
- The largest percentage increases in convictions were for *sexual offences* which increased 11.5 per cent from 5,400 to 6,100, *robbery* which increased by 9.8 per cent from 8,300 to 9,100 and *burglary* which increased 7.4 per cent from 22,800 to 24,500.
- The conviction ratio² for the 12 months ending June 2011 was 83.1 per cent and remained similar to the previous period. The conviction ratio varied from 59.6 per cent for *sexual offences* to 91.6 per cent for *drug offences*.

² Offenders convicted as a percentage of defendants proceeded against.

Figure 1. 3: Percentage change in convictions by offence type and offence group, 12 months ending June 2010 to 12 months ending June 2011



Sentencing

In the 12 months ending June 2011 there were 1.3 million offenders sentenced at all courts, 3.9 per cent fewer than the 1.4 million sentenced in the previous 12 months ending June 2010, and 14.8 per cent down on the 1.6 million sentenced 12 months ending June 2004.

Table Q1.2: Offenders sentenced by principal sentence, 12 months ending June 2010 to 12 months ending June 2011, and percentage change

	12 months ending June 2010	12 months ending June 2011 ^(P)	Percentage change ^(b)
Total offenders sentenced	1,389,421	1,335,460	-3.9%
Total persons sentenced	1,381,186	1,327,928	-3.9%
Immediate custody	99,550	101,976	2.4%
Suspended sentence	46,456	48,729	4.9%
Community sentence	188,401	183,203	-2.8%
Fines	927,363	872,150	-6.0%
Other disposals	127,651	129,402	1.4%
Average custodial sentence length(months) ⁽¹⁾	13.8	14.1	2.0%
			Percentage point change
Percentage of those sentenced⁽²⁾			
Immediate custody (persons)	7.2%	7.7%	0.5%
Suspended sentence (persons)	3.4%	3.7%	0.3%
Community sentence (persons)	13.6%	13.8%	0.2%
Fines (all offenders)	66.7%	65.3%	-1.4%
Other disposals (all offenders)	9.2%	9.7%	0.5%

(1) ACSL excludes life/indeterminate sentences

(2) May not sum to 100% as some rates are calculated on an all offenders basis and some on a persons basis

(P) Provisional

Fines are the most common sentence passed at court.

- In the 12 months ending June 2011, 65.3 per cent of all offenders were given a fine, a decline of 1.4 percentage points on the 12 months ending June 2010. The decrease in the fine rate is due to the declining use of fines for summary offences, the type of offence for which fines are most commonly used.

In the 12 months ending June 2011, 17.5 per cent of persons were given a sentence to serve in the community either as a Community Sentence (13.8 per cent) or a Suspended Sentence Order (3.7 per cent).

- The community sentence rate in the 12 months ending June 2011 ranged from 40.5 per cent for *criminal damage* (43.6 per cent in the 12 months ending June 2010) to 3.0 per cent for *summary motoring offences* (3.2 per cent in the 12 months ending June 2010).
- The suspended sentence rate in the 12 months ending June 2011 ranged from 25.9 per cent for *indictable motoring offences* (25.7 per cent in the 12 months ending June 2010) to less than one per cent for *summary motoring offences* (unchanged compared to the 12 months ending June 2010).

Custodial sentences are given for the most serious breaches of the criminal law. In the 12 months ending June 2011, 7.7 per cent of persons received a custodial

sentence, an increase of 0.5 percentage points from the 12 months ending June 2010.

In the 12 months ending June 2011, 102,000 offenders were given a custodial sentence, 2.4 per cent more compared to the 12 months ending June 2010, but 2.2 per cent lower than the 12 months ending June 2001 peak.

- The sentence given depends on the nature of the offence and custody is far more common for indictable offences than summary offences. In the 12 months ending June 2011 the custody rate³ was 24.3 per cent for all indictable offences, a decrease of 0.2 per cent compared to the 12 months ending June 2010. For summary offences the custody rate was 1.8 per cent, the same as the 12 months ending June 2010.
- The custody rate varies across indictable offence groups and was highest for *robbery* (59.1 per cent) and *sexual offences* (57.2 per cent) and lowest for *criminal damage* (15.4 per cent) and *drug offences* (15.6 per cent).

Overall, the average custodial sentence length has increased by 0.3 months to 14.1 months compared to the 12 months ending June 2010.

- There were 1,276 indeterminate sentences handed down in the 12 months ending June 2011, a decrease from 1,383 in the 12 months ending June 2010. Within this group the number of life sentences fell from 400 in the 12 months ending June 2010 to 366 in the 12 months ending June 2011, the lowest figure in the last eleven years.

Offending Histories

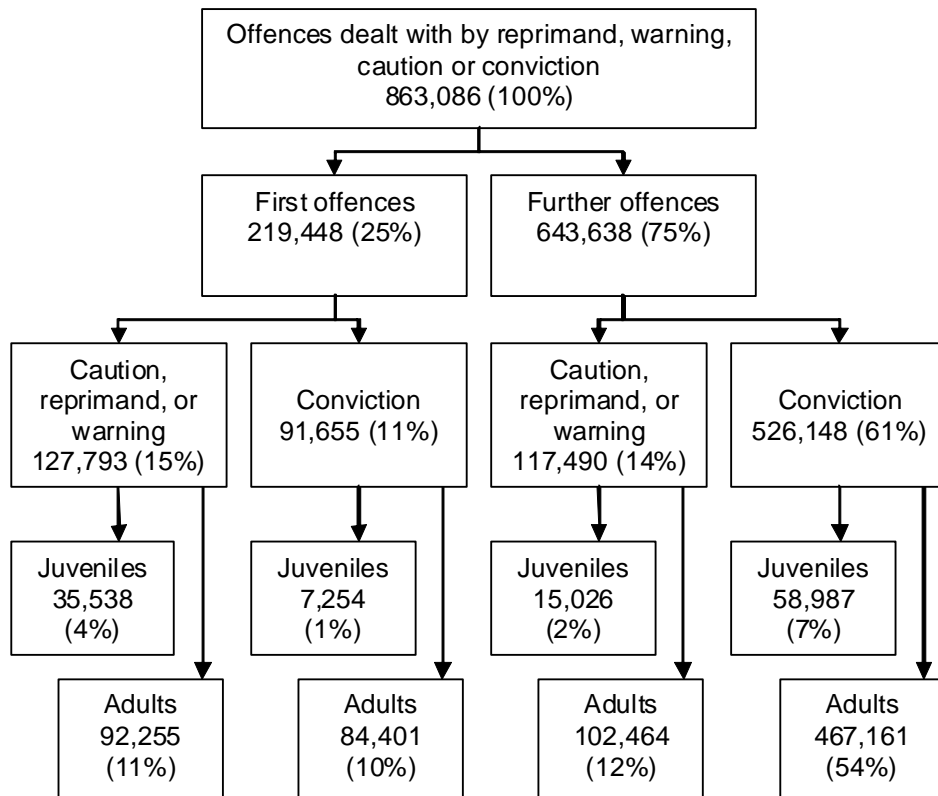
This section provides an overview of the changing structure of the known offending population with information on the breakdown of offences committed by new offenders and repeat offenders, the trends in new entrants to the criminal justice system, and breakdowns of the criminal histories of cautioned and sentenced offenders.

- 25.4 per cent of proven offences were committed by offenders with no previous criminal offences, this compares to 27.2 per cent in the 12 months ending June 2010 and reflects a fall in the use of cautions
- There were 219,500 First Time Entrants (people who received their first conviction, caution, reprimand or warning). This is a fall of 10.3 per cent from the 244,700 first time entrants in the 12 months ending June 2010. This fall was driven by a reduction of 24.5 per cent in the number of Juvenile First Time Entrants. Adult first time entrants fell by 6.0 per cent.
- The differing trends in adult and juvenile first time entrants are largely due to the different disposals received. 52 per cent of adult first time entrants received an out of court disposal whereas 83 per cent of juvenile first time entrants received an out of court disposal. Thus the trends in out of court disposals will affect Juvenile First Time entrants more than adults. See Pages 3 and 4 for details on trends in Out of Court Disposals.

³ Persons given a custodial sentence as a percentage of all sentences

- The rate of Juvenile First Time Entrants per 100,000 of population now stands at 828, a fall of 23.3 per cent from the 12 months ending June 2010.
- 10.3 per cent of offenders convicted of indictable offences had no previous criminal offences, whilst 30.1 per cent had 15 or more previous offences, these compare to 10.6 per cent and 28.3 per cent respectively in the 12 months ending June 2010.

Figure 1.4 : First offences and further offences in the 12 months ending June 2011



Offences

This section differs from the previous section in that it considers the total number of notifiable⁴ offences.

Table Q1.3: Recorded crime⁵ and notifiable offences, 12 months ending June 2010 to 12 months ending June 2011

	12 months ending June 2010	12 months ending June 2011 ^(P)	Percentage change ^(P)
Recorded Crime	4,267,752	4,096,717	-4.0%
Out of court disposals	458,333	410,038	-10.5%
<i>Cannabis warnings</i> ^(P)	86,362	80,537	-6.7%
<i>Penalty notices for disorder</i> ⁽¹⁾	101,117	86,056	-14.9%
<i>Cautions</i>	270,854	243,445	-10.1%
Prosecutions	1,010,089	994,193	-1.6%
Convictions	754,664	751,204	-0.5%
Offences taken into consideration	78,213	72,913	-6.8%
Proven offences ⁽²⁾	1,291,210	1,234,155	-4.4%

(1) Number of Penalty Notices for Disorder issued to offenders aged 16 and over

(2) Includes out of court disposals, convictions and offences taken into consideration

(P) *Provisional*

Much of the activity in the criminal justice system starts with the police, when a crime is reported, investigated and detected. The Home Office report on the police activity and the crimes they deal with. In the 12 months ending June 2011, recorded crime decreased by 4.0 per cent from 4.3 million to 4.1 million when compared to the 12 months ending June 2010.

Over the same period, for the equivalent notifiable offences, the use of out of court disposals decreased by 10.5 per cent; penalty notices for disorder (PND) were down 14.9 per cent, cautions down 10.1 per cent and cannabis warnings down 6.7 per cent.

Between the 12 months ending June 2010 and the 12 months ending June 2011, prosecutions for notifiable offences decreased by 1.6 per cent and convictions decreased by 0.5 per cent. However, these changes are not consistent across the offence groups.

⁴ Notifiable offences include all offences that could possibly be tried by jury (i.e. indictable and triable-either-way offences) plus a few additional closely related summary offences, such as assault without injury. Offence groups in notifiable offence tables in this section therefore differ from groups shown in other sections which may be restricted to indictable offences only.

⁵ www.homeoffice.gov.uk/publications/science-research-statistics/research-statistics/crime-research/hosb1011/?view=Standard&pubID=908823

The greatest percentage increases in prosecutions were recorded for the following offence groups:

- *robbery offences*, increasing 5.2 per cent from 19,100 to 20,100,
- *drug offences*, increasing 2.9 per cent from 107,200 to 110,300;
- *sexual offences*, increasing 2.1 per cent from 29,300 to 29,900.

The offence group with the highest percentage decrease in prosecutions in the 12 months ending June 2011 was:

- *other notifiable offences*, which decreased by 5.4 per cent from 107,100 to 101,300.

The greatest percentage changes for convictions were also for these offence groups and were as follows:

- *sexual offences*, increasing 10.6 per cent from 15,900 to 17,600;
- *Robbery offences*, increasing 2.8 per cent from 12,200 to 12,500.
- *drug offences*, increasing 2.0 per cent from 94,400 to 96,300.

Table Q1.4: Changes in recorded crime and notifiable offences, 12 months ending June 2010 to 12 months ending June 2011, and percentage change

Offence Type	12 months ending	Recorded Crime	Cannabis Warnings ^(P)	Penalty Notices for Disorder ⁽¹⁾	Cautions	Proceedings	Convictions
Violence against the person	June 2010	862,638	-	36,926	108,262	337,863	230,609
	June 2011	796,913	-	28,661	96,945	327,944	225,411
Sexual offences	June 2010	55,097	-	-	1,728	29,320	15,912
	June 2011	54,725	-	-	1,353	29,933	17,593
Burglary	June 2010	528,457	-	-	4,098	44,011	30,702
	June 2011	518,954	-	-	3,945	44,822	31,495
Robbery	June 2010	74,887	-	-	196	19,063	12,165
	June 2011	76,786	-	-	250	20,051	12,507
Theft and handling stolen goods	June 2010	1,520,890	-	43,135	61,745	212,750	183,183
	June 2011	1,531,630	-	36,911	52,582	214,388	184,132
Fraud and forgery	June 2010	151,616	-	-	7,359	72,195	51,449
	June 2011	144,032	-	-	6,311	68,474	50,649
Criminal damage	June 2010	768,446	-	7,621	35,473	80,583	63,979
	June 2011	677,318	-	5,539	29,609	76,929	60,892
Drug offences	June 2010	235,280	86,362	13,435	43,796	107,225	94,452
	June 2011	231,778	80,537	14,945	44,726	110,324	96,371
Other notifiable offences	June 2010	70,441	-	-	8,197	107,079	72,213
	June 2011	64,581	-	-	7,724	101,328	72,154
All Notifiable Offences	June 2010	4,267,752	86,362	101,117	270,854	1,010,089	754,664
	June 2011	4,096,717	80,537	86,056	243,445	994,193	751,204

(1) Number of Penalty Notices for Disorder issued to offenders aged 16 and over

(P) Provisional

Note: Care should be taken when comparing police recorded crime against outcomes in the criminal justice system, as the reporting of a crime and the final outcome, e.g. a conviction, may not occur in the same year.

Data linking

The Data Improvement Project was created with the aim of improving the evidence base, performance measurement and analytical capability of the Ministry of Justice through better use of administrative data linked across different sources.

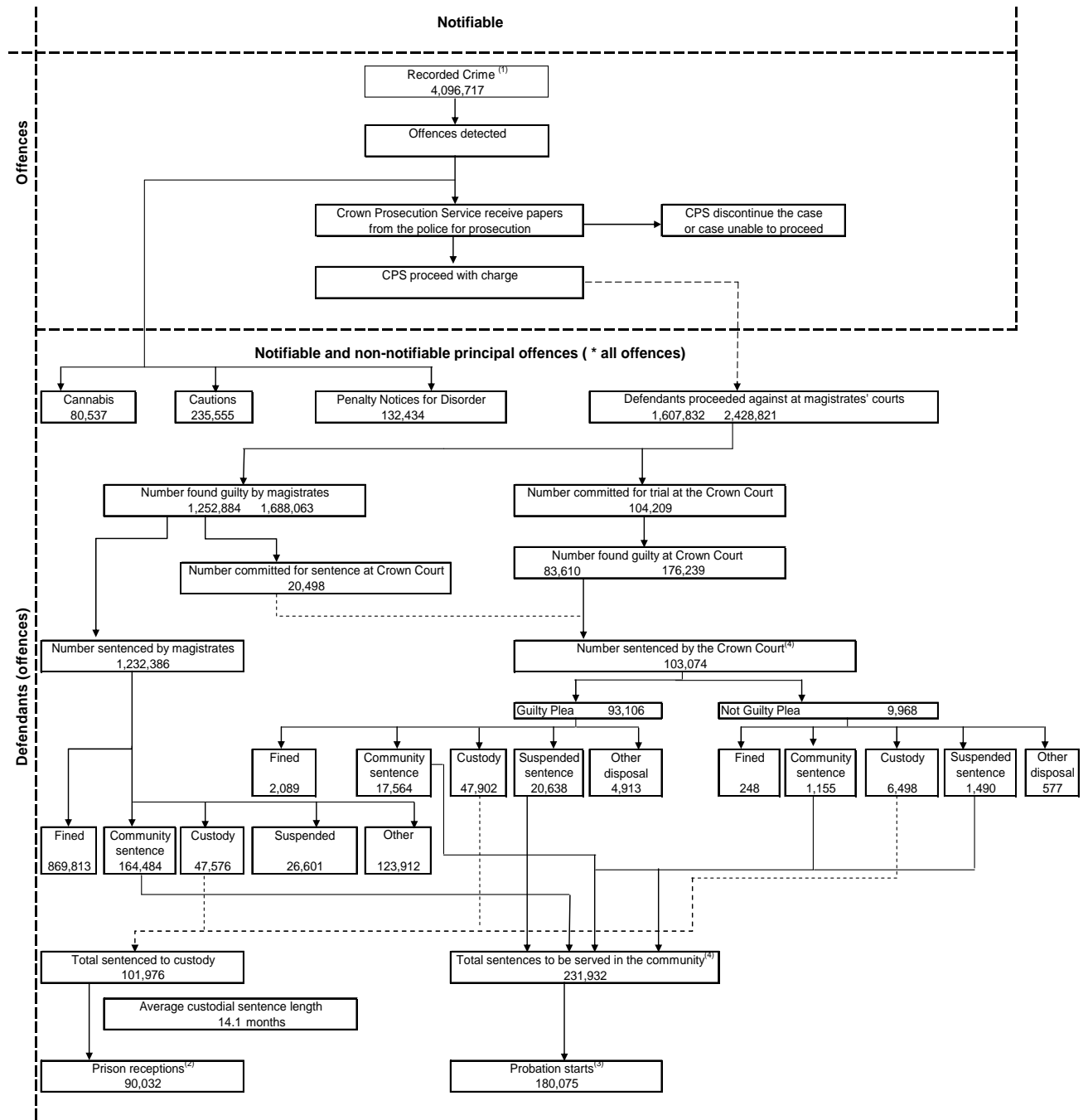
The Ministry of Justice holds large administrative datasets covering activity in the Criminal Justice System. However, there is not one unique identifier which is recorded in all of these datasets. The Data Improvement Project has produced a data linking methodology which enables us to bring together information on offenders from these systems.

Information in this reports presents early findings from the project relating to timeliness of criminal proceedings, guilty plea rates for defendants who elect to go to the Crown Court for trial, and repeat prison receptions. There is also a detailed summary of the linking methodology.

Key points from the early findings are:

- By linking magistrates' and Crown Court data, we can now report timeliness from the date of offence to the date of completion in both courts – latest data shows that on average it takes 155 days from date of offence for a criminal case to progress through the court system.
- 61 per cent of defendants who elect to go to the Crown Court for trial then plead guilty at some point in the Crown Court proceedings.
- 10 per cent of people sentenced to immediate custody in 2009 had more than one sentenced reception to prison during the year.

Figure 1.5: Flows through the Criminal Justice System, 12 months ending June 2011



(1) Covers all indictable, including triable either way, offences plus a few closely associated summary offences.
 (2) Receptions for offenders given a custodial sentence (figures include fine defaulters)
 (3) Offenders starting Community Order or Suspended Sentence Order supervision by the Probation Service
 (4) In a small number of cases the plea data is not recorded.
 * Total number of all offences in comparison with the total number of defendants on a principal offence basis.

Table Q1.5 - Summary of criminal justice statistics, 12 months ending June 2001 to 12 months ending June 2011^(p)

	England and Wales												Thousands
	12 months ending												
	June 2001	June 2002	June 2003	June 2004	June 2005	June 2006	June 2007	June 2008	June 2009	June 2010	June 2011	(% change) 12 months ending June 2011 v 12 months ending June 2010	
Crime measured by British Crime Survey ⁽¹⁾	..	12,738	12,121	11,295	10,774	11,016	11,022	10,476	10,034	9,566	9,713	2	
- offences recorded by the police	4,925	5,692	5,984	5,928	5,601	5,526	5,331	4,870	4,655	4,268	4,097	-4	
Notifiable offences ⁽²⁾	231	225	230	254	269	328	363	348	312	261	236	-10	
Number of offenders cautioned ⁽³⁾	145	141	146	155	166	197	207	194	172	143	129	-10	
of which <i>Indictable offences</i> ⁽⁴⁾	1,880	1,858	1,931	2,079	1,943	1,845	1,741	1,693	1,649	1,682	1,608	-4	
Defendants proceeded against at magistrates' courts	493	505	516	489	427	420	402	398	405	426	429	1	
of which <i>Indictable offences</i> ⁽⁴⁾	1,336	1,309	1,372	1,507	1,450	1,399	1,345	1,331	1,300	1,311	1,253	-4	
Defendants found guilty at magistrates' courts	267	274	281	271	251	254	247	250	253	260	269	3	
of which <i>Indictable offences</i> ⁽⁴⁾	16	16	16	16	16	19	17	18	18	17	19	17	
Defendants sentenced at the Crown Court after summary conviction	74	74	78	79	77	75	79	85	91	101	104	3	
Defendants tried at the Crown Court	55	58	60	60	59	58	61	68	73	81	84	3	
Defendants found guilty at the Crown Court	52	55	58	58	57	55	58	65	70	77	79	4	
of which <i>Indictable offences</i> ⁽⁴⁾	1,391	1,367	1,432	1,568	1,510	1,457	1,407	1,399	1,374	1,392	1,336	-4	
Total offenders found guilty at both courts	319	330	339	329	308	309	305	323	323	337	348	3	
of which <i>Indictable offences</i> ⁽⁴⁾	1,622	1,592	1,662	1,821	1,779	1,785	1,770	1,747	1,685	1,652	1,572	-5	
Total offenders found guilty or cautioned ⁽³⁾	465	470	485	484	474	506	512	509	494	480	477	-1	
of which <i>Indictable offences</i> ⁽⁴⁾	1,391	1,365	1,430	1,567	1,508	1,456	1,406	1,398	1,372	1,389	1,335	-4	
Total sentenced	1,320	1,291	1,354	1,490	1,433	1,379	1,328	1,312	1,281	1,292	1,232	-5	
Magistrates' court	71	74	77	77	75	77	78	85	91	98	103	6	
Crown Court	104	110	109	108	103	99	93	99	100	100	102	2	
Sentence	3	3	3	3	4	22	39	42	42	46	49	5	
Custody	161	172	193	196	203	199	192	193	196	188	183	-3	
Suspended Sentence	981	937	976	1,102	1,053	994	943	920	910	927	872	-6	
Community Sentence	142	144	150	157	145	142	139	144	125	128	129	1	
Fine													
Other Sentences													

(1) BCS estimates relate to crimes experienced in the 12 months prior to interview.

(2) Includes British Transport Police from 2002/03. The National Crime Recording Standard was introduced in 2002/03 and figures before and after that date are not directly comparable

(3) Cautions, written warnings and all fixed penalties for summary motoring offences are not covered in this volume but are published in the Home Office Statistical Bulletin 'Motoring offences and breath tests'.

(4) Indictable offences include those triable-either-way.

(5) Not statistically significant, see Section 8 of the User Guide to Home Office Crime Statistics:

<http://www.homeoffice.gov.uk/publications/science-research-statistics/crime-research/user-guide-crime-statistics?view=Binary>

(P) Provisional

Table Q1.6 - "Proven Offenders" in the criminal justice system by offence groups and outcomes, 12 months ending June 2010 to 12 months ending June 2011⁽¹⁾

Offence Type	12 months ending Jun 10	12 months ending Jun 11	Penalty Notice for Disorder ⁽⁴⁾	Cannabis warnings ⁽⁵⁾	Proven Offenders ⁽¹⁾	Conviction Rate ⁽²⁾	Proven Offenders ⁽¹⁾	Sentenced ⁽³⁾	Discharged	Fine	Community Sentence	Suspended Sentence	Otherwise dealt with	Custody	Custody Rate ⁽⁶⁾	Average Custodial Sentence Length
Violence against the person	Jun 10	Jun 11	-	23,865	66,161	43,548	66%	67,413	43,285	1,670	1,783	15,666	8,789	1,336	14,041	18.0
	Jun 10	Jun 11	-	19,686	64,401	44,412	69%	64,288	44,141	1,917	2,126	15,670	8,855	1,467	14,106	32.0%
Sexual offences	Jun 10	Jun 11	-	1,404	10,067	5,424	54%	6,828	5,389	115	1,115	1,469	439	128	3,126	58.0%
	Jun 10	Jun 11	-	1,418	10,150	6,050	60%	7,468	6,047	114	1,700	514	146	3,458	57.2%	
Burglary	Jun 10	Jun 11	-	3,771	30,783	22,833	74%	26,604	22,533	545	325	8,890	2,402	471	9,900	43.9%
	Jun 10	Jun 11	-	3,379	32,187	24,528	76%	27,907	24,360	537	377	8,972	2,744	563	11,167	45.8%
Robbery	Jun 10	Jun 11	-	188	13,379	8,256	62%	8,444	8,273	16	6	2,721	487	156	4,887	59.1%
	Jun 10	Jun 11	-	246	14,245	9,063	64%	9,309	9,070	15	4	2,839	529	321	5,362	59.1%
Theft and handling stolen goods	Jun 10	Jun 11	-	43,135	52,650	114,654	89%	210,439	113,956	23,842	15,750	41,018	7,534	5,342	20,470	18.0%
	Jun 10	Jun 11	-	36,911	44,691	135,692	90%	203,571	121,721	25,224	17,191	42,553	8,221	6,049	22,483	18.5%
Fraud and forgery	Jun 10	Jun 11	-	6,622	26,342	20,778	79%	27,400	20,624	2,924	6,684	3,165	366	4,983	24.2%	
	Jun 10	Jun 11	-	5,687	24,342	20,300	83%	25,987	20,240	2,308	2,733	6,828	3,427	385	4,559	22.5%
Criminal damage	Jun 10	Jun 11	-	5,622	9,827	7,688	78%	13,308	7,641	1,849	3,333	415	430	1,069	14.0%	
	Jun 10	Jun 11	-	4,876	9,417	7,449	79%	12,325	7,498	1,489	796	3,008	446	545	1,146	15.4%
Drug offences	Jun 10	Jun 11	86,362	13,435	41,395	65,466	92%	201,284	59,731	8,288	22,282	13,566	3,486	2,162	9,937	16.6%
	Jun 10	Jun 11	80,537	14,945	41,753	67,301	92%	198,915	61,218	9,116	23,676	12,570	4,069	2,116	9,329	15.2%
Indictable motoring offences	Jun 10	Jun 11	-	-	3,953	3,449	87%	3,449	3,446	43	283	983	884	41	1,202	34.9%
	Jun 10	Jun 11	-	-	3,629	3,227	89%	3,227	3,241	46	275	955	839	35	1,091	33.7%
Other indictable offences	Jun 10	Jun 11	-	7,234	71,367	50,295	70%	57,529	49,655	3,649	13,426	11,353	4,793	5,488	10,946	22.4%
	Jun 10	Jun 11	-	6,729	67,895	49,526	73%	56,255	49,312	3,747	12,954	9,674	5,095	6,636	11,206	23.1%
Indictable offences	Jun 10	Jun 11	86,362	56,570	142,751	425,903	79%	622,698	334,533	42,216	57,729	105,703	32,404	15,920	80,561	24.1%
	Jun 10	Jun 11	80,537	51,856	128,665	429,259	81%	609,262	346,778	44,513	60,247	105,167	34,679	18,265	83,907	24.3%
Summary non-motoring	Jun 10	Jun 11	-	96,325	117,762	616,414	82%	720,094	506,163	46,023	359,536	64,950	9,397	11,751	14,506	2.9%
	Jun 10	Jun 11	-	80,578	106,890	601,460	81%	676,465	489,273	45,946	344,777	62,692	9,753	11,363	14,542	3.0%
Summary motoring offences	Jun 10	Jun 11	-	-	639,986	548,624	86%	548,624	548,725	7,817	510,098	17,748	4,655	3,924	4,483	0.8%
	Jun 10	Jun 11	-	-	577,113	499,293	87%	499,293	499,409	6,673	467,126	15,144	4,297	2,642	3,527	0.7%
Summary Offences	Jun 10	Jun 11	-	96,325	117,762	1,256,400	84%	1,268,718	1,054,888	53,840	869,634	82,698	14,052	15,675	18,989	1.8%
	Jun 10	Jun 11	-	80,578	106,890	1,176,573	84%	1,175,758	989,682	52,619	811,903	78,036	14,050	14,005	18,069	1.8%
All Offences	Jun 10	Jun 11	86,362	152,895	260,513	1,662,303	83%	1,891,416	1,389,421	96,056	927,363	188,401	48,456	31,595	99,550	7.2%
	80,537	132,434	235,555	1,607,832	1,336,494	83%	1,765,020	1,335,460	97,132	872,150	183,203	48,729	32,270	101,976	7.7%	

(1) Defendants who have been proven to have committed an offence (through either a court conviction or caution/reprimand or warning or receiving a Penalty Notice for Disorder).
 (2) Figures are based on defendants sentenced each year. Some of those sentenced may have been found guilty in a previous year so the number of offenders sentenced may exceed the number of guilty defendants.
 (3) Custody rate calculated on the number of persons sentenced in each offence group.
 (4) Number of Penalty Notices for Disorder issued to offenders aged 16 and over.
 (5) Provisional

Out of Court Disposals [Tables Q2.1 – Q2.5]

Out of Court Disposals aim to deal with low risk, low-level and mostly first-time offenders outside of the court system in appropriate circumstances. Out of Court Disposals are not suitable for contested or more serious cases. They would not normally be considered for those who offend repeatedly (subject to relevant guidance). Out of court disposals⁶ can include cannabis warnings, penalty notices for disorder and cautions⁷.

Cannabis warnings

For a first time offence of cannabis possession an adult is usually issued with a 'cannabis warning'.

In the 12 months ending June 2011 there were 80,500 warnings for cannabis possession, a decrease of 6.7 per cent compared with 86,400 in the 12 months ending June 2010.

Note - figures for cannabis warnings appearing in this publication are provisional and may be revised following Home Office validation. Finalised National Statistics will be published by the Home Office in July 2012 by financial year.

Penalty Notices for Disorder

Penalty Notices for Disorder (PNDs) are more commonly known as 'on the spot fines'. PNDs are a fixed penalty of £50 or £80 designed to tackle low-level, anti-social and nuisance offending for offenders aged 16 or over and are issued for a range of minor offences.

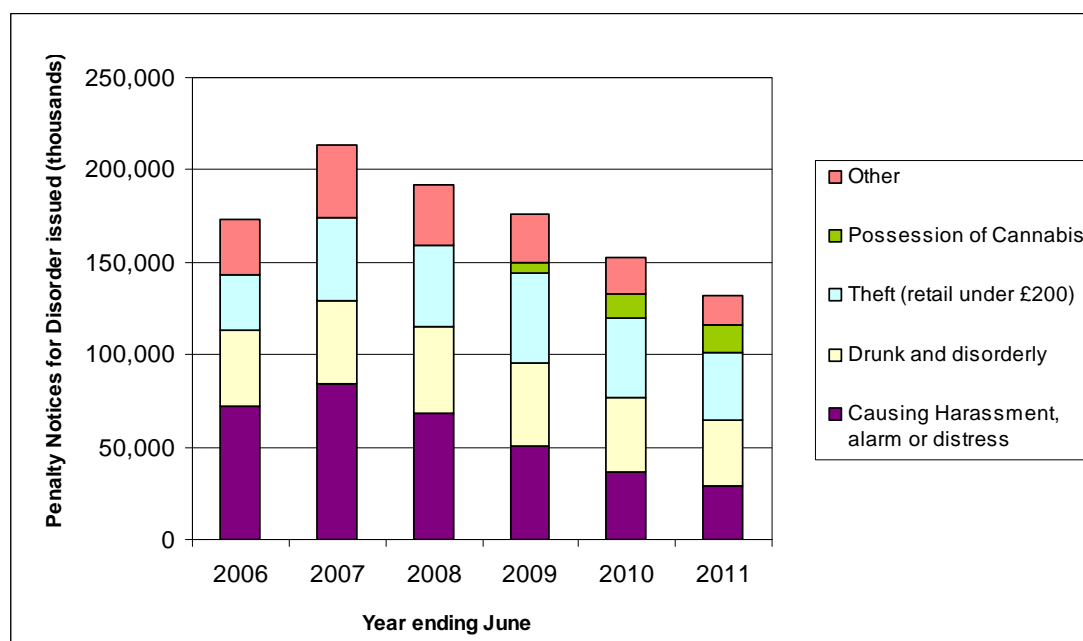
There were 132,400 PNDs issued for the 12 months ending June 2011, a decrease of 13.4 per cent compared with the 12 months ending June 2010 and a fall of 38 per cent when compared with the peak of 213,700 PND's issued in the 12 months ending June 2007.

There were fewer PNDs issued in 35 of the 43 police force areas (including British Transport Police) in England and Wales compared with the 12 months ending June 2010. The largest fall was in the Metropolitan Police Force area where 17,800 PNDs were issued, a fall of 4,500 since the 12 months ending June 2010. The largest proportionate fall was in Bedfordshire where 45 per cent fewer PNDs were issued falling from 1,000 to 558. Avon and Somerset police force area had the largest increase in PNDs issued rising from 3,000 to 3,200.

⁶ Cautions, written warnings and all fixed penalties for summary motoring offences are not covered in this volume but are published in the Home Office Statistical Bulletin 'Motoring offences and breath tests'.

⁷ Including reprimands and warnings for juveniles.

Figure 2.1: Penalty Notices for Disorder issued, 12 months ending June 2006 to 12 months ending June 2011



In the 12 months ending June 2011 four offences accounted for 87.8 per cent of all PNDs issued. These were

- ‘retail theft of goods under the value of £200’ - 27.9 per cent of all PNDs issued in this period (36,900);
- ‘drunk and disorderly’ - 27.0 per cent (35,700);
- ‘behaviour likely to cause harassment, alarm or distress’ – 21.6 per cent (28,700);
- ‘possession of cannabis’, the newest offences for which a PND can be issued now accounts for 11.3 per cent (14,900) of PNDs issued.

The use of PNDs varied by offence.

- ‘Behaviour likely to cause harassment, alarm or distress’ has fallen by 22.4 per cent from 36,900 in the 12 months ending June 2010 to 28,700 in the 12 months ending June 2011. It has fallen by 65.9 per cent since a peak of 84,000 in the 12 months ending June 2007.
- PNDs issued for ‘Drunk and disorderly’ fell by 10.2 per cent from 39,800 in the 12 months ending June 2010 to 35,700 in the 12 months ending June 2011.
- PNDs issued for ‘retail theft under the value of £200’ fell by 14.4 per cent from 43,100 in the 12 months ending June 2010 to 36,900 in the 12 months ending June 2011.

- There was a rise of 11.2 per cent in PNDs issued for 'possession of cannabis' from 13,400 in the 12 months ending June 2010 to 14,900 in the 12 months ending June 2011.

Caution

A caution can be given when there is sufficient evidence for a conviction and it is not considered to be in the public interest to institute criminal proceedings. Additionally, the offender must admit guilt and consent to a caution in order for one to be given. A formal caution may be given by, or on the instructions of, a senior police officer. A system of reprimands and warnings replaced cautioning for juveniles in June 2000.

During the 12 months ending in June 2011 there were 236,000 offenders cautioned⁸, including juveniles, given a reprimand or warning. This was a 9.6 per cent decrease on the previous period (year ending June 2010) and continues the downward trend in the use of cautions from the peak in 2007. Of those offenders cautioned during the 12 months ending June 2011:

- For indictable (including triable-either-way offences) or summary offences there was a decrease of 9.9 and 9.2 per cent in offenders cautioned to 128,700 and 106,900 respectively.
- The decline in cautions administered for offences involving *violence against the person* and *theft and handling* accounted for 84.8 per cent of the decrease in cautions for indictable offences.
- Cautions peaked in the 12 months ending June 2007 with 363,400 cautions administered. Since the 12 months ending June 2007 there has been a 35.2 per cent decline in the number administered. The decline coincides with the removal in April 2008 of a target to increase offences brought to justice, with one placing more emphasis on bringing serious crime to justice.

Within indictable offences the cautioning rate⁹ is highest for *drug offences*, *criminal damage*, and *violence against the person*, and lowest for *robbery*, *burglary*, and *other indictable offences*. In the 12 months ending June 2011 the cautioning rates for these offences were:

- *Drug offences* 40.4 percent;
- *Criminal damage* 39.6 per cent;
- *Violence against the person* 30.9 per cent;
- *Robbery* 2.6 per cent;
- *Burglary* 12.1 per cent; and
- *Other indictable offences* 12.0 per cent.

⁸ Excluding summary motoring offences

⁹ The proportion of offenders that are given a caution out of those either cautioned or found guilty

Figure 2.2 Offenders cautioned by offence type, in the 12 months ending June 2001 to the 12 months ending June 2011

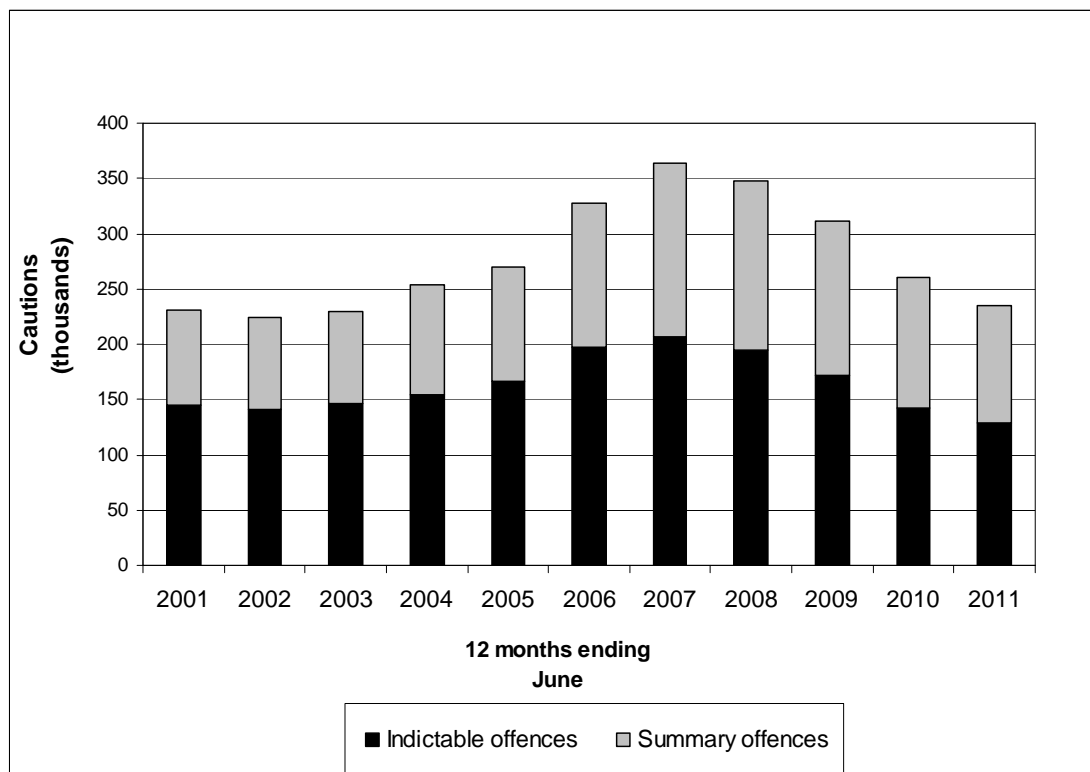


Table 2.2 - Number of Penalty Notices for Disorder issued to offenders age 16 and over by ethnicity, 12 months ending June 2011

England and Wales		White	Black	Asian	Other	Not Recorded/Not Known	Total
Higher Tier Offences (£80)							
Wasting police time	1,934	35	126	262	460	2,817	
Misuse of public telecommunications system	564	3	15	22	108	712	
Giving false alarm to fire and rescue authority	39	2	1	1	9	52	
Causing Harassment, alarm or distress	19,952	533	1,725	1,307	5,144	28,661	
Throwing fireworks	238	7	11	41	61	358	
Drunk and disorderly	28,179	274	658	570	6,055	35,736	
Criminal Damage (under £500)	4,213	63	171	168	924	5,539	
Theft (retail under £200)	26,800	822	1,861	1,477	5,951	36,911	
Breach of fireworks curfew	13	0	1	0	1	15	
Possession of category 4 fireworks	14	0	1	1	5	21	
Possession by a person under 18 of adult fireworks	34	0	9	5	6	54	
Sale of alcohol to drunken person	29	2	9	14	9	63	
Supply of alcohol to a person under 18	30	1	1	5	13	50	
Sale of alcohol to a person under 18	988	29	153	362	317	1,849	
Purchasing alcohol for a person under 18	243	0	1	6	24	274	
Purchasing alcohol for a person under 18 for consumption on the premises	19	0	0	1	6	26	
Delivery of alcohol to a person under 18 or allowing such delivery	91	2	0	3	13	109	
Possession of Cannabis	8,935	376	1,799	1,491	2,344	14,945	
Lower Tier Offences (£50)							
Trespassing on a railway	933	58	61	16	366	1,434	
Throwing stones at a train / railway	4	1	1	0	0	6	
Drunk in a highway	528	14	13	21	141	717	
Consumption of alcohol in a designated public place	851	79	67	77	155	1,229	
Depositing and leaving litter	573	22	30	40	138	803	
Consumption of alcohol by a person under 18 on relevant premises	11	0	2	0	5	18	
Allowing consumption of alcohol by a person under 18 on relevant premises	4	0	0	0	1	5	
Buying or Attempting to buy alcohol by a person under 18	27	0	1	0	2	30	
Totals							
Total Higher Tier Offences	92,315	2,149	6,542	5,736	21,450	128,192	
Total Lower Tier Offences	2,931	174	175	154	808	4,242	
Total all offences	95,246	2,323	6,717	5,890	22,258	132,434	

Table Q2.3 - Offenders cautioned by type of offence, 12 months ending June 2001 to 12 months ending June 2011

Type of offence	12 months ending										
	Jun 2001	Jun 2002	Jun 2003	Jun 2004	Jun 2005	Jun 2006	Jun 2007	Jun 2008	Jun 2009	Jun 2010	Jun 2011
England and Wales											
All offenders											
Indictable offences											
Violence against the person	19.5	20.2	26.6	32.7	42.3	56.7	55.6	46.4	31.2	23.9	19.9
Sexual offences	1.2	1.2	1.3	1.5	1.6	1.9	2.0	1.9	1.6	1.4	1.4
Burglary	6.5	6.0	5.6	5.6	6.0	7.1	7.6	6.2	4.9	3.8	3.4
Robbery	0.5	0.5	0.4	0.4	0.5	0.7	0.6	0.5	0.3	0.2	0.2
Theft and handling stolen goods	65.6	58.3	52.5	58.4	64.3	70.2	74.8	67.3	64.3	52.7	44.7
Fraud and forgery	5.9	5.3	5.5	5.6	6.5	7.8	8.3	8.4	7.8	6.6	5.7
Criminal damage	3.3	3.3	3.3	4.7	6.0	8.5	9.1	8.4	7.1	5.6	4.9
Drug offences	38.8	41.5	45.8	40.5	32.4	36.2	39.4	45.4	46.3	41.4	41.8
Other (excluding motoring offences)	4.2	4.2	4.7	5.7	6.2	8.2	9.8	9.6	8.4	7.2	6.7
Total (excluding motoring offences)	145.4	140.6	145.7	155.0	165.8	197.3	207.2	194.1	171.7	142.8	128.7
Summary offences											
(excluding motoring offences)	86.1	83.9	84.1	98.8	103.6	130.6	156.3	154.0	139.8	117.8	106.9
All offences											
(excluding motoring offences)	231.5	224.5	229.8	253.8	269.3	327.8	363.4	348.1	311.5	260.5	235.6

Table Q2.4 - Proportion of offenders cautioned who were cautioned or found guilty, by type of offence, 12 months ending June 2001 to 12 months ending June 2011

England and Wales		12 months ending												Percentages
Type of offence	Jun 2001	Jun 2002	Jun 2003	Jun 2004	Jun 2005	Jun 2006	Jun 2007	Jun 2008	Jun 2009	Jun 2010	Jun 2011			
All offenders														
Indictable offences														
Violence against the person	36	36	41	46	52	58	57	53	42	35	31			
Sexual offences	24	22	23	25	25	28	28	27	24	21	19			
Burglary	21	19	18	18	21	24	24	21	17	14	12			
Robbery	8	6	5	5	7	9	7	6	3	2	3			
Theft and handling stolen goods	34	31	30	34	38	41	43	38	36	31	27			
Fraud and forgery	21	20	21	21	24	27	30	28	27	24	22			
Criminal damage	24	23	23	29	34	41	42	43	45	42	40			
Drug offences	47	47	47	47	46	47	49	48	46	41	40			
Other (excluding motoring offences)	9	8	9	9	10	14	17	18	17	13	12			
Total (excluding motoring offences)	32	30	30	32	35	39	41	38	35	30	27			
Summary offences														
(excluding motoring offences)	15	16	15	16	17	21	24	24	22	19	18			
All offences														
(excluding motoring offences)	23	22	22	23	25	29	32	30	27	24	22			

Table Q2.5 - Persons cautioned for all offences by ethnicity, 12 months ending June 2001 to 12 months ending June 2011

England and Wales		Ethnicity				
12 months ending	Total	White	Black	Asian	Other	Unknown
Jun 2001	231.5	198.2	13.0	9.9	2.4	8.0
Jun 2002	224.5	192.4	13.7	9.9	2.4	6.1
Jun 2003	229.8	195.3	14.6	10.5	2.6	6.8
Jun 2004	253.8	215.2	15.6	10.8	2.8	9.3
Jun 2005	269.3	225.0	14.2	14.0	4.1	12.0
Jun 2006	327.8	269.6	20.1	14.3	4.6	19.2
Jun 2007	363.4	298.8	23.3	16.0	5.1	20.2
Jun 2008	348.1	287.9	22.7	16.3	5.0	16.2
Jun 2009	311.5	257.9	21.6	15.3	5.3	11.5
Jun 2010	260.5	216.0	18.0	13.2	4.7	8.5
Jun 2011	235.6	195.9	17.2	12.3	3.9	6.3

Note: Totals may not sum due to rounding.

Court proceedings [Tables Q3.5 – Q3.7]

If there is sufficient evidence against the defendant and none of the out of court disposals are appropriate, the police will formally charge the suspect. The law then requires the defendant to be brought before a magistrates' court as soon as possible. The defendant can be summoned to appear in court or remanded on bail or custody.

Magistrates' courts

Virtually all criminal court cases start in a magistrates' court and less serious offences can be handled entirely within this court.

In the 12 months ending June 2011, 1.61 million defendants were proceeded against at magistrates' courts, 4.4 per cent less than the 1.68 million in the 12 months ending June 2010.

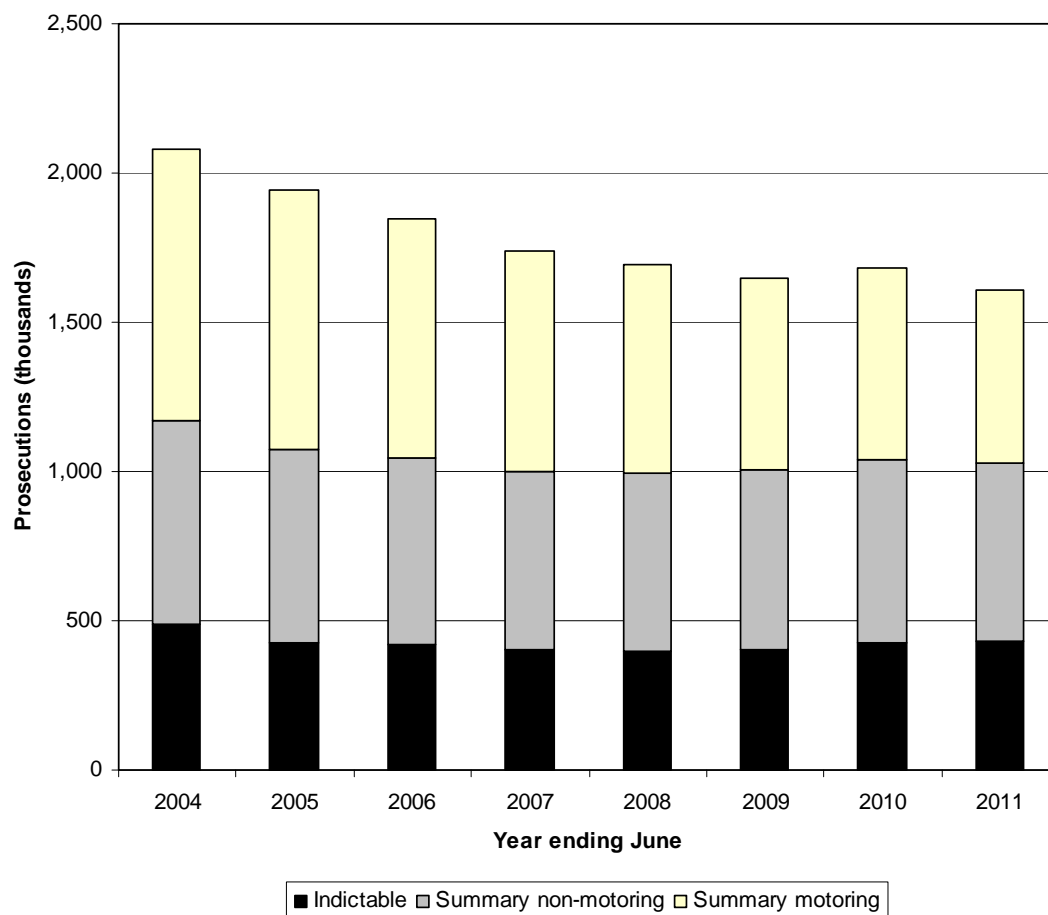
The main factor contributing to this decrease is a fall in defendants proceeded against for summary offences, a drop of 6.2 per cent from 1.26 million to 1.18 million between the 12 months ending June 2010 and the 12 months ending June 2011. Over the same period the number of proceedings for indictable offences (including triable-either-way offences) increased 0.8 per cent from 425,900 to 429,300.

Summary proceedings, which cover the less serious offences such as TV license evasion and common assault, can be dealt with entirely within the magistrates' courts and make up around three quarters of cases. In the 12 months ending June 2011, 73.3 per cent (1.18 million) of the 1.61 million total proceedings at the magistrates' courts were for summary offences. Just under half (49 per cent) of these cases relate to summary motoring proceedings which include offences such as speeding, driving while disqualified and drunk driving.

The fall in proceedings for summary offences is not split evenly between summary motoring and summary non-motoring proceedings:

- Defendants proceeded against for summary motoring offences fell by 9.8 per cent from 640,000 in the 12 months ending June 2010 to 577,100 in the 12 months ending June 2011.
- Defendants proceeded against for summary non-motoring offences fell by 2.4 per cent from 616,400 in the 12 months ending June 2011 to 601,500.

Figure 3.1 Figure 3.1: Defendants proceeded against at magistrates' courts by type of offence, 12 months ending June 2004 to 12 months ending June 2011



In the past decade defendants proceeded against peaked at 2.08 million in the 12 months ending June 2004. Compared to this peak there were 22.6 per cent fewer defendants proceeded against in the 12 months ending June 2011. This was made up of a fall of 12.1 per cent in those proceeded against for indictable offences; 11.8 per cent in those proceeded against for summary non-motoring offences and a fall of 36.4 per cent in those proceeded against for summary motoring offences.

Remands [Tables Q3.1 – Q3.4]

Police remands are the decisions made by a police officer on whether to detain or bail a defendant pending their first appearance in court or send a notice summoning them to appear in court. Court remands are the court's decision on whether a defendant charged with a criminal offence should be held in custody or released on bail during the period up to and including the trial, or while awaiting sentence.

Police remands

During the 12 month period ending June 2011, there were 1.69 million¹⁰ defendants directed to appear at magistrates' courts, a decrease of 4.4 per cent compared with the 12 month period ending June 2010. Of these, 33.2 per cent were granted bail by the police, 11.2 per cent were remanded in custody, and the remaining 55.6 per cent were directed to appear via summonses.

The proportion of defendants remanded in custody varies by offence type. During the 12 months ending June 2011 the proportions remanded in custody were:

- 28.0 per cent (133,100) for indictable offences, similar to the 12 months ending June 2010 and 11.6 percentage points more than the 16.4 per cent during the 12 months ending June 2007, the lowest in the last seven years.;
- 7.6 per cent (47,100) for summary non-motoring offences, one fifth of a percentage point more than during the 12 months ending June 2010, and;
- 1.4 per cent (8,400) for summary motoring offences, similar to the proportions seen (1.5 per cent) during the 12 months ending June 2010.

Magistrates' courts

During the 12 month period ending June 2011, 1.69 million defendants were proceeded against at magistrates' courts. Of these it was estimated that:

- 568,700 – 33.7 per cent were granted bail;
- 54,200 – 3.2 per cent were remanded in custody; and the remaining,
- 1.06 million – 63.1 per cent had their case concluded at the magistrates' courts without being remanded.

The proportion of defendants remanded into custody at magistrates' courts has remained broadly consistent over the last seven years at around three to four per cent.

The proportions of defendants remanded in custody by magistrates' by offence type during the 12 months ending June 2011 were:

- 9.5 per cent (45,200) for indictable cases;
- 1.3 per cent (7,900) for summary non-motoring offences;
- 0.2 per cent (1,100) for summary motoring offences.

Crown Court remands

¹⁰ Including those who failed to appear

Defendants are more likely to be remanded in custody for indictable offences than summary offences. As a result the proportion of defendants remanded in custody at the Crown Court is higher than at magistrates' courts.

The proportion of defendants tried at the Crown Court for all offences who were remanded on bail has increased each year from 43.1 per cent during the 12 months ending June 2005 to 53.1 per cent during the 12 months ending June 2010. For the 12 months ending June 2011 this was 52.4 per cent; a decrease of 0.7 percentage points from the highest proportion bailed seen.

During the 12 months ending June 2005 the corresponding proportion of defendants remanded in custody was 41.7 per cent, this decreased each year to 33.5 per cent during the 12 months ending June 2010. In the 12 months ending June 2011 it increased by 0.8 percentage points to 34.3 per cent.

Ethnicity

Data on the ethnicity of defendants are currently available for indictable offences only. This is because for a number of summary offences a defendant is not required to attend court (e.g. TV license evasion) and an observation regarding ethnicity can therefore not be made. It is collected using the officer observed appearance 4+1 system.

During the 12 months ending June 2011, the proportion of white defendants tried at the Crown Court for indictable offences who were held on remand was 33.5 per cent. This figure was 44.5 per cent for black defendants and 33.7 per cent for Asian defendants.

Outcome of cases¹¹

During the 12 months ending June 2011 approximately 11.8 per cent of those defendants remanded in custody at magistrates' courts were subsequently acquitted or not proceeded against, 14.0 per cent received immediate custody, 3.1 per cent received a fine and 5.5 per cent a community sentence. The remainder were either committed for trial or sentence at the Crown Court (55.1 per cent), received an absolute or conditional discharge (2.2 per cent), a suspended sentence (2.0 per cent), were otherwise dealt with (2.6 per cent) or failed to appear¹² (2.8 per cent).

Over the same period, of those remanded in custody during trial at the Crown Court 12.2 per cent were subsequently acquitted or not proceeded against, 71.2 per cent received immediate custody, 6.2 per cent a community sentence and 5.6 per cent a suspended sentence. The remainder received an absolute or a conditional discharge (0.6 per cent), were otherwise dealt with (2.2 per cent) or failed to appear (1.8 per cent).

Of those defendants who completed the court process during the 12 months ending June 2011, 18 per cent were acquitted or not proceeded against, 23 per cent received a non custodial sentence and the remaining 59 per cent received an immediate custodial sentence.

¹¹ Some percentages may not sum due to rounding.

¹² Defendants may have been remanded in custody at one stage of proceedings and granted bail at a later stage; these are counted as 'remanded in custody' but it is possible for them to fail to appear.

The much higher proportion of defendants receiving immediate custody at the Crown Court than at magistrates' courts reflects the more serious nature of cases tried at the Crown Court.

Failure to appear

Each year a proportion of defendants fail to appear in court having been summoned to appear or granted bail.

- During the 12 months ending June 2011, just under 80,000 defendants failed to appear to bail or summons at magistrates' courts, 4.7 per cent of those directed to appear. This compares with 84,800 during the 12 months ending June 2010 and 104,500 during the 12 months ending June 2009, where the proportions failing to appear were 4.8 and 6.0 per cent respectively.
- During the 12 months ending June 2011 approximately 2,900 defendants on bail failed to appear at the Crown Court, two per cent of those tried at the Crown Court. This compares with 2,700 defendants (also two per cent) in the period ending June 2010.

Table Q3.1 - Defendants directed to appear at magistrates' courts⁽¹⁾ by type of offence and how directed to appear, 12 months ending June 2005 to 12 months ending June 2011 (e)

England and Wales	Defendants (thousands and percentages)													
	Defendants (thousands)										Percentages			
	12 months ending June													
How directed to appear	2005 ⁽²⁾	2006 ⁽²⁾	2007 ⁽²⁾	2008 ⁽²⁾⁽³⁾	2009 ⁽³⁾	2010	2011	2005	2006	2007	2008 ⁽³⁾	2009	2010	2011
Indictable offences														
Summoned	49.7	49.3	47.7	45.4	40.4	38.8	40.0	9.8	10.0	10.1	9.8	8.8	8.3	8.4
Arrested and bailed	368.1	353.3	346.6	337.0	307.6	300.3	301.6	72.5	71.8	73.5	72.9	66.9	63.8	63.5
Arrested and held in custody ⁽⁴⁾	89.9	89.2	77.3	79.9	111.7	131.5	133.1	17.7	18.1	16.4	17.3	24.3	27.9	28.0
Total	507.6	491.9	471.6	462.3	459.7	470.6	474.7	100.0	100.0	100.0	100.0	100.0	100.0	100.0
Summary offences (other than motoring)														
Summoned	447.3	419.2	393.5	384.8	395.2	399.2	389.0	66.2	64.2	62.5	61.8	63.3	62.9	62.9
Arrested and bailed	201.9	205.8	211.4	211.3	191.3	188.0	181.9	29.9	31.5	33.6	34.0	30.7	29.6	29.4
Arrested and held in custody ⁽⁴⁾	26.0	28.2	24.9	26.3	37.4	47.0	47.1	3.9	4.3	4.0	4.2	6.0	7.4	7.6
Total	675.2	653.2	629.8	622.4	623.9	634.1	618.0	100.0	100.0	100.0	100.0	100.0	100.0	100.0
Summary motoring offences														
Summoned	765.0	688.1	623.7	589.9	554.2	562.5	509.6	81.3	80.4	80.3	81.3	82.7	85.1	85.7
Arrested and bailed	159.4	153.8	143.2	127.4	106.5	88.6	77.0	16.9	18.0	18.4	17.5	15.9	13.4	12.9
Arrested and held in custody ⁽⁴⁾	16.4	13.9	10.1	8.6	9.7	10.1	8.4	1.7	1.6	1.3	1.2	1.4	1.5	1.4
Total	940.7	855.8	777.0	725.9	670.3	661.2	595.0	100.0	100.0	100.0	100.0	100.0	100.0	100.0
All offences														
Summoned	1,261.8	1,156.6	1,064.8	1,020.3	989.7	1,000.5	938.7	59.4	57.8	56.7	56.3	56.4	56.7	55.6
Arrested and bailed	729.2	713.0	701.2	675.8	605.4	576.9	560.6	34.3	35.6	37.3	37.3	34.5	32.7	33.2
Arrested and held in custody ⁽⁴⁾	132.3	131.4	112.3	114.9	158.8	188.5	188.5	6.2	6.6	6.0	6.3	9.1	10.7	11.2
Total	2,123.2	2,001.1	1,878.3	1,810.9	1,753.9	1,765.9	1,687.7	100.0	100.0	100.0	100.0	100.0	100.0	100.0

(e) Magistrates' courts data are estimated.

(1) Total number of persons proceeded against includes those who failed to appear to a summons, or to bail, who are excluded from the proceedings figures given in other chapters.

Approximately 80,000 persons (5 per cent of those directed to appear) failed to appear in the 12 months ending June 2011.

(2) Prior to 2008, estimates of remands by police and at magistrates' courts presented in Q3.1 and Q3.2 will not reconcile. See the methodological section of 'A guide to Criminal Justice Statistics' for further information.

(3) Excludes remands data for Cardiff magistrates' court for April, July, and August 2008. Data for 2008 have been revised and now include approximately 16,600 defendants who failed to appear which were omitted from previously published versions of this table.

(4) Includes those remanded for part of the time in custody and part on bail.

Note: Some figures may not sum due to rounding.

Table Q3.2 - Defendants proceeded against at magistrates' courts⁽¹⁾ who were remanded by magistrates, by type of offence and type of remand, 12 months ending June 2005 to 12 months ending June 2011 (e)

England and Wales	Defendants (thousands and percentages)													
	Defendants (thousands)						Percentages							
	12 months ending June													
Type of offence	2005 ⁽²⁾	2006 ⁽²⁾	2007 ⁽²⁾	2008 ⁽²⁾	2009 ⁽³⁾	2010	2011	2005	2006	2007	2008 ⁽³⁾	2009	2010	2011
Indictable offences														
Not remanded	198.4	197.0	193.8	197.2	130.3	118.4	129.5	39.2	40.0	41.0	42.7	28.3	25.2	27.3
Remanded on bail	263.9	253.3	239.8	221.6	279.5	296.8	300.0	52.1	51.5	50.8	48.0	60.8	63.1	63.2
Remanded in custody ⁽⁴⁾	44.2	41.9	38.7	42.6	49.9	55.4	45.2	8.7	8.5	8.2	9.2	10.8	11.8	9.5
Total	506.4	492.2	472.3	461.3	459.7	470.6	474.7	100.0	100.0	100.0	100.0	100.0	100.0	100.0
Summary offences (other than motoring)														
Not remanded	525.2	499.4	472.8	469.7	432.1	430.7	423.7	77.7	76.3	75.3	75.4	69.3	67.9	68.6
Remanded on bail	140.8	145.3	145.3	142.2	180.4	191.7	186.5	20.8	22.2	23.1	22.8	28.9	30.2	30.2
Remanded in custody ⁽⁴⁾	9.7	10.2	10.1	10.8	11.4	11.8	7.9	1.4	1.6	1.6	1.7	1.8	1.9	1.3
Total	675.7	654.8	628.1	622.8	623.9	634.1	618.0	100.0	100.0	100.0	100.0	100.0	100.0	100.0
Summary motoring offences														
Not remanded	827.1	750.0	688.8	638.6	563.7	563.7	511.7	87.8	87.8	88.4	88.1	84.1	85.2	86.0
Remanded on bail	107.6	98.6	86.0	82.3	103.8	95.7	82.3	11.4	11.5	11.0	11.4	15.5	14.5	13.8
Remanded in custody ⁽⁴⁾	7.3	5.6	4.3	3.5	2.8	1.8	1.1	0.8	0.7	0.6	0.5	0.4	0.3	0.2
Total	942.0	854.2	779.2	724.5	670.3	661.2	595.0	100.0	100.0	100.0	100.0	100.0	100.0	100.0
All offences														
Not remanded	1,550.5	1,446.4	1,355.4	1,305.8	1,126.2	1,112.7	1,064.8	73.0	72.3	72.1	72.2	64.2	63.0	63.1
Remanded on bail	512.1	497.1	471.1	446.1	563.7	584.2	568.7	24.1	24.8	25.1	24.7	32.1	33.1	33.7
Remanded in custody ⁽⁴⁾	61.1	57.7	53.0	56.9	64.0	69.0	54.2	2.9	2.9	2.8	3.1	3.6	3.9	3.2
Total	2,123.7	2,001.3	1,879.5	1,808.8	1,753.9	1,765.9	1,687.7	100.0	100.0	100.0	100.0	100.0	100.0	100.0

(e) Magistrates' courts data are estimated.

(1) Total number of persons proceeded against includes those who failed to appear to a summons, or to bail, who are excluded from the proceedings figures given in other chapters.

(2) Prior to 2008, estimates of remands by police and at magistrates' courts presented in Q3.1 and Q3.2 will not reconcile. See the methodological section of 'A guide to Criminal Justice Statistics' for further information.

(3) Excludes remands data for Cardiff magistrates' court for April, July, and August 2008.

(4) Including those remanded in custody at any stage of proceedings at magistrates' courts who may also have been given bail at some stage of those proceedings.

Note: Some figures may not sum due to rounding.

Table Q3.3 - Defendants tried at the Crown Court⁽¹⁾ by remand status during trial at the Crown Court by offence type, 12 months ending June 2005 to 12 months ending June 2011

England and Wales	Defendants (thousands and percentages)													
	Defendants (thousands)						Percentages							
Type of offence	12 months ending June													
	2005	2006	2007	2008 ⁽²⁾	2009	2010	2011	2005	2006	2007	2008 ⁽²⁾	2009	2010	2011
Indictable offences														
Not remanded	14.1	15.7	14.3	14.7	15.6	14.5	14.8	15.0	16.7	15.0	14.5	14.6	12.6	12.3
Remanded on bail	40	42	45.9	49.8	52.7	60.7	62.9	42.7	44.5	48.3	49.1	49.3	52.9	52.5
Remanded in custody ⁽²⁾	39.5	36.6	34.9	36.8	38.6	39.5	42.2	42.2	38.8	36.7	36.4	36.1	34.4	35.2
Total	93.6	94.3	95.1	101.3	106.9	114.8	119.9	100.0	100.0	100.0	100.0	100.0	100.0	100.0
Summary offences (other than motoring)														
Not remanded	0.4	0.6	0.7	0.9	1.2	1.4	1.6	13.2	17.4	18.7	21.6	27.5	23.9	27.5
Remanded on bail	1.5	1.8	2.1	2.3	2.4	3.2	3.1	57.1	57.2	58.5	57.8	53.1	56.9	52.2
Remanded in custody ⁽²⁾	0.8	0.8	0.8	0.8	0.9	1.1	1.2	29.7	25.4	22.8	20.6	19.4	19.2	20.3
Total	2.7	3.2	3.6	4.0	4.4	5.7	6.0	100.0	100.0	100.0	100.0	100.0	100.0	100.0
Summary motoring offences														
Not remanded	0.3	0.3	0.3	0.4	0.4	0.4	0.4	31.8	35.2	34.6	35.7	41.4	43.5	47.1
Remanded on bail	0.3	0.3	0.4	0.5	0.5	0.4	0.4	42.8	41.7	46.2	50.4	45.7	46.0	43.2
Remanded in custody ⁽²⁾	0.2	0.2	0.2	0.1	0.1	0.1	0.1	25.4	23.2	19.2	13.9	12.9	10.5	9.7
Total	0.8	0.7	0.9	1.1	1.0	0.9	0.9	100.0	100.0	100.0	100.0	100.0	100.0	100.0
All offences														
Not remanded	14.7	16.5	15.3	16.0	17.3	16.3	16.9	15.1	16.8	15.3	15.0	15.4	13.4	13.3
Remanded on bail	41.9	44.1	48.4	52.6	55.5	64.4	66.4	43.1	44.9	48.6	49.4	49.4	53.1	52.4
Remanded in custody ⁽²⁾	40.5	37.6	35.9	37.8	39.6	40.7	43.5	41.7	38.3	36.0	35.5	35.3	33.5	34.3
Total	97.2	98.2	99.6	106.4	112.3	121.4	126.8	100.0	100.0	100.0	100.0	100.0	100.0	100.0

(1) Total number of persons proceeded against includes those who failed to appear to a summons, or to bail, who are excluded from the proceedings figures given in other chapters.

(2) Including those remanded in custody at any stage of proceedings at the Crown Court who may also have been given bail at some stage of those proceedings. Remand status of defendants shown is based on decisions made during proceedings at the Crown Court which may be different to that recorded in Table Q3.4.

Note: Some figures may not sum due to rounding.

Table Q3.4 - Defendants⁽¹⁾ tried at the Crown Court by ethnicity⁽²⁾, by remand status before trial or sentence and offence group, 12 months ending June 2011

England and Wales		Defendants (thousands)				
Offence group ⁽³⁾ and remand status	Total	Ethnicity				Not recorded
		White	Black	Asian	Other	
Defendants (thousands)						
Violence against the person	29.2	21.7	2.8	1.8	0.8	2.0
Not remanded	0.0	0.0	0.0	-	0.0	0.0
Bailed	20.4	15.5	1.7	1.3	0.6	1.3
Remanded in custody ⁽⁴⁾	8.7	6.2	1.1	0.5	0.3	0.6
Sexual offences	7.7	5.6	0.7	0.6	0.2	0.6
Not remanded	0.0	0.0	-	-	-	0.0
Bailed	5.4	4.1	0.4	0.4	0.1	0.4
Remanded in custody ⁽⁴⁾	2.4	1.6	0.3	0.2	0.1	0.2
Burglary	13.1	10.7	0.9	0.4	0.3	0.8
Not remanded	0.0	0.0	0.0	-	-	0.0
Bailed	5.1	4.2	0.3	0.2	0.1	0.3
Remanded in custody ⁽⁴⁾	8.0	6.5	0.6	0.2	0.2	0.5
Robbery	7.9	4.8	1.6	0.6	0.3	0.7
Not remanded	0.0	0.0	0.0	-	0.0	0.0
Bailed	3.4	2.0	0.7	0.3	0.2	0.3
Remanded in custody ⁽⁴⁾	4.5	2.8	0.9	0.3	0.2	0.3
Theft and handling stolen goods	14.3	10.6	1.3	0.8	0.4	1.2
Not remanded	0.0	0.0	0.0	0.0	-	0.0
Bailed	9.9	7.3	0.9	0.6	0.3	0.8
Remanded in custody ⁽⁴⁾	4.4	3.3	0.4	0.2	0.1	0.4
Fraud and forgery	8.9	3.9	1.4	0.9	0.5	2.3
Not remanded	0.0	0.0	0.0	0.0	0.0	0.0
Bailed	6.4	2.9	0.8	0.6	0.3	1.9
Remanded in custody ⁽⁴⁾	2.5	0.9	0.7	0.3	0.2	0.4
Criminal damage	2.4	1.9	0.1	0.1	0.1	0.1
Not remanded	0.0	-	-	-	-	0.0
Bailed	1.5	1.2	0.1	0.1	0.0	0.1
Remanded in custody ⁽⁴⁾	0.9	0.8	0.1	0.0	0.0	0.1
Drug offences	16.5	10.7	2.2	1.6	0.7	1.3
Not remanded	0.0	0.0	0.0	0.0	-	0.0
Bailed	11.3	8.2	1.3	0.9	0.3	0.6
Remanded in custody ⁽⁴⁾	5.2	2.5	1.0	0.7	0.4	0.6
Other indictable offences	17.6	12.1	1.5	1.3	0.6	2.1
Not remanded	0.3	0.0	0.0	0.0	0.0	0.2
Bailed	12.5	8.9	0.9	0.9	0.4	1.4
Remanded in custody ⁽⁴⁾	4.8	3.1	0.7	0.4	0.2	0.4
Indictable motoring offences	2.3	1.6	0.2	0.2	0.1	0.2
Not remanded	-	-	-	-	-	-
Bailed	1.8	1.2	0.1	0.2	0.1	0.2
Remanded in custody ⁽⁴⁾	0.5	0.3	0.1	0.0	0.0	0.0
Total indictable offences	119.9	83.6	12.8	8.3	4.1	11.1
Total not remanded	0.4	0.1	0.0	0.0	0.0	0.3
Total bailed	77.7	55.5	7.1	5.5	2.3	7.3
Total remanded in custody⁽⁴⁾	41.8	28.0	5.7	2.8	1.8	3.6

(1) Includes those who failed to appear.

(2) Third party observed (4+1) ethnicity data.

(3) Includes indictable offence groups only. In 2010, these accounted for 94 per cent of all cases tried at the Crown Court.

(4) Includes those remanded for part of the time in custody and part on bail. Remand status shown is that recorded at the point of committal from the magistrates' court to the Crown Court for trial or sentence which may differ from that recorded in Table Q3.3.

Note: Some figures may not sum due to rounding.

Offenders found guilty [Tables Q4.1 – Q4.3]

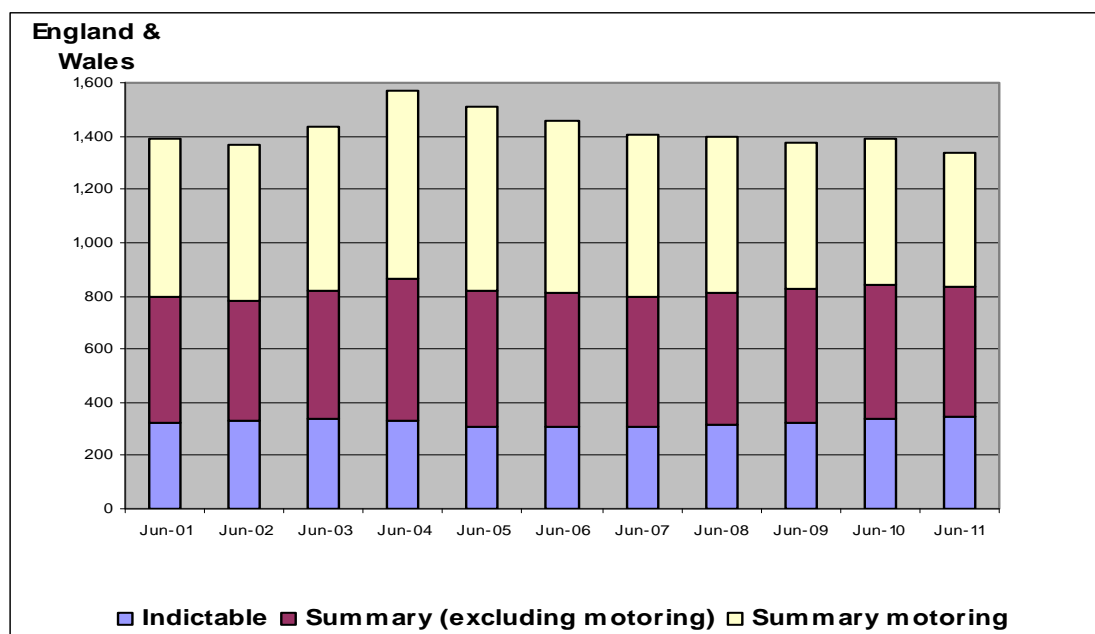
A conviction is where a person or a company is found guilty of a criminal offence at either the magistrates' courts or the Crown Court.

During the 12 months ending June 2011 there were 1.34 million offenders found guilty, a decrease of four per cent compared to the 12 months ending June 2010.

Whilst there was an increase of 3.3 per cent (to 348,200) of offenders found guilty for indictable offences (including triable-either-way offences) there was a decrease of 3.4 per cent (to 489,000) of offenders found guilty of summary non motoring offences and a decrease of nine per cent (to 499,300) of offenders found guilty of summary motoring offences.

Convictions for indictable offences accounted for 26.1 per cent of the total defendants found guilty, this is the highest proportion in the last eleven years and continues the trend of steady rises seen since the 12 months ending June 2005 when the percentage was 20.4 per cent. Summary non-motoring offences accounted for 36.6 per cent, and summary motoring offences for 37.4 per cent of convictions respectively.

Figure 4.1: Offenders found guilty by offence type, 12 months ending June 2001 to 12 months ending June 2011



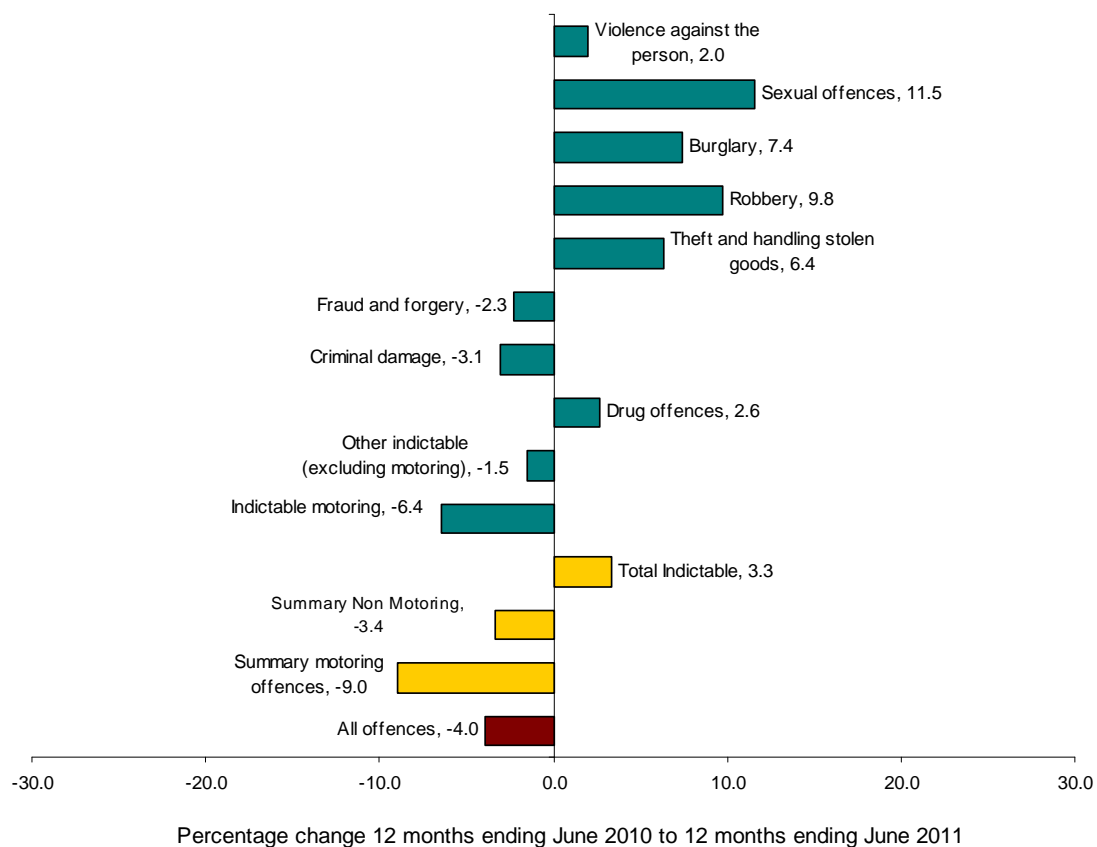
Convictions by offence group

Six of the ten indictable offence groups show increases compared to the 12 months ending June 2010. These include changes in the following offence groups:

- Sexual offences increased by 11.5 per cent from 5,400 to 6,100 during the 12 months ending June 2011. The conviction ratio for sexual offences increased by 5.7 percentage points over the same period.

- Robbery offences increased by 9.8 per cent from 8,300 to 9,100, and the conviction ratio increased by 1.9 percentage points.
- Burglary convictions increased by 7.4 per cent from 22,800 to 24,500, and the conviction ratio increased by 2.1 percentage points.
- Theft and handling stolen goods increased by 6.4 per cent from 114,700 to 122,000, with the conviction ratio increasing by less than one percentage point.

Figure 4.2: Percentage change in offenders found guilty by offence type and offence group, 12 months ending June 2010 to 12 months ending June 2011



Conviction demographics

A total of 985,100 males were found guilty during the 12 months to June 2011, accounting for 76.6 per cent of all persons. This compares with 300,300 females found guilty, 23.4 per cent of all persons¹³. A total of 68,200 juveniles (offenders aged 10 to 17) were found guilty during the 12 months ending June 2011 (5.6 per cent of offenders found guilty).

¹³ These figures are based on known 'males' and 'females'. Following the introduction of the Libra case management system during 2008, offenders at magistrates' courts can now be recorded as sex 'Not stated'. These figures have been excluded.

In the 12 months ending June 2011 there were 348,200 offenders found guilty of an indictable offence, of which 90.3 per cent were of a known ethnicity. This is a 1.4 percentage point increase on the previous 12 month period and a 47.9 percentage point increase since the 12 months ending June 2008, the year the LIBRA case management system was rolled out.

Three-quarters of the total persons found guilty at all courts were white. Of these 38.7 per cent were convicted of theft and handling stolen goods.

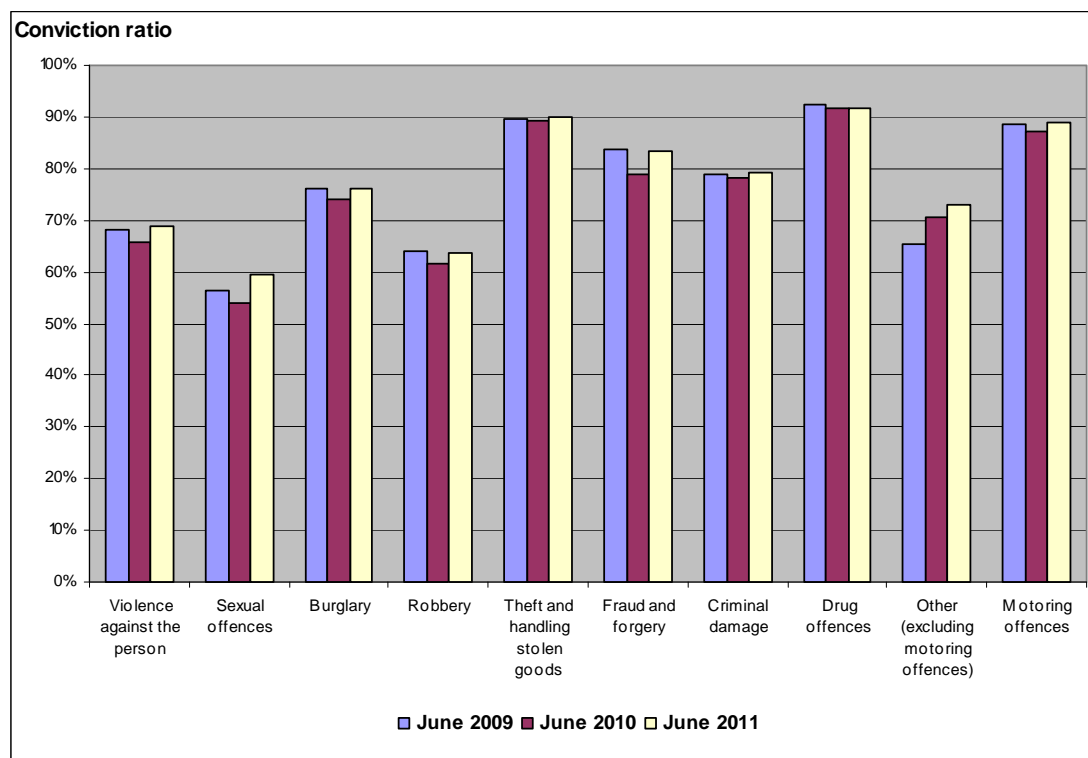
Conviction ratio

The conviction ratio is defined as the proportion of defendants proceeded against who were found guilty. During the 12 months ending June 2011, the conviction ratio for all offences was 83.1 per cent, a slight increase on the previous 12 month period. In comparison with the 12 months ending June 2001, the overall conviction ratio has risen by 9.1 percentage points.

Comparing the 12 months ending June 2011 with the 12 months ending June 2010, there was:

- an increase of two percentage points in the conviction ratio for indictable offences (81.1 per cent in the 12 months ending June 2011).
- a decrease of 0.8 percentage points in the conviction ratio for summary non-motoring offences (81.3 per cent in the 12 months ending June 2011).
- an increase of less than one per cent in the conviction ratio for summary motoring offences (86.5 per cent in the 12 months ending June 2011).

Figure 4.3: Conviction ratio by indictable offence group, 12 months ending June 2009, 12 months ending June 2010, and 12 months ending June 2011



The conviction ratio increased in 9 of the ten offence groups in the 12 months ending June 2011. All of the indictable offence groups conviction ratios in the 12 months ending June 2011 have increased in comparison to the 12 months ending June 2001. The largest increase was for '*violence against the person*', which has increased from 45.4 per cent to 69.0 per cent across the 11 year period.

Table Q4.1 - Offenders⁽¹⁾ found guilty at all courts by offence group, 12 months ending June 2001 to 12 months ending June 2011⁽²⁾

England and Wales	Number of offenders (thousands)											
	Jun 01	Jun 02	Jun 03	Jun 04	Jun 05	Jun 06	Jun 07	Jun 08	Jun 09	Jun 10	Jun 11	
Offence group	12 months ending											
Indictable offences												
Violence against the person	34.6	36.0	38.5	38.8	39.4	41.8	41.8	41.7	42.6	43.5	44.4	
Sexual offences	3.9	4.2	4.4	4.5	4.8	4.8	5.1	5.1	4.9	5.4	6.1	
Burglary	24.9	25.7	26.3	25.4	23.1	22.7	23.6	23.7	23.6	22.8	24.5	
Robbery	6.2	7.2	7.8	7.3	7.3	7.5	8.6	8.6	8.8	8.3	9.1	
Theft and handling stolen goods	125.4	127.3	124.0	114.6	105.5	102.0	100.9	107.7	113.1	114.7	122.0	
Fraud and forgery	22.1	21.4	21.3	21.2	20.1	20.9	19.6	21.4	20.7	20.8	20.3	
Criminal damage	10.2	10.9	11.1	11.4	11.6	12.4	12.8	11.1	8.5	7.7	7.4	
Drug offences	44.6	46.6	51.0	45.8	37.9	40.3	40.5	48.7	54.6	60.1	61.7	
Other (excluding motoring offences)	43.5	45.7	49.7	54.2	53.1	52.2	47.5	43.0	42.3	50.3	49.5	
Motoring offences	4.0	4.6	5.2	5.5	5.1	4.5	4.4	4.0	3.6	3.4	3.2	
Total	319.4	329.6	339.1	328.7	307.9	309.0	304.7	315.0	322.7	337.0	348.2	
Summary offences												
Offences (excluding motoring offences)	480.4	451.0	476.4	533.4	512.9	501.8	488.7	495.2	502.3	506.0	489.0	
Motoring offences	591.1	586.4	616.4	705.6	688.9	645.8	613.4	589.0	548.6	548.6	499.3	
Total	1,071.4	1,037.4	1,092.8	1,239.0	1,201.8	1,147.7	1,102.1	1,084.2	1,051.0	1,054.6	988.3	
All offences⁽³⁾	1,390.9	1,367.0	1,432.0	1,567.6	1,509.6	1,456.7	1,406.8	1,399.3	1,373.6	1,391.6	1,336.5	

(1) Offenders comprises persons and organisations i.e. companies and public bodies.

(2) Excludes convictions data for Cardiff magistrates' court for April, July, and August 2008.

(3) May not sum due to rounding.

Table Q4.2 - Offenders found guilty at all courts by offence group, sex and age group, 12 months ending June 2011

England and Wales	Number of offenders (thousands)							
	Offence group	Males			Females			
		All offenders	All ages	Aged 10-17	Aged 18 & over	All ages	Aged 10-17	Aged 18 & over
Indictable offences								
Violence against the person	44.4	39.0	5.0	34.1	5.3	1.0	4.3	0.1
Sexual offences	6.1	6.0	0.5	5.4	0.1	0.0	0.1	0.0
Burglary	24.5	23.4	4.7	18.8	1.0	0.2	0.8	0.1
Robbery	9.1	8.3	3.3	5.0	0.7	0.3	0.4	0.0
Theft and handling stolen goods	122.0	96.0	10.5	85.5	25.5	2.4	23.1	0.5
Fraud and forgery	20.3	13.6	0.3	13.3	6.0	0.1	5.9	0.6
Criminal damage	7.4	6.6	1.3	5.3	0.9	0.2	0.6	0.0
Drug offences	61.7	56.8	5.3	51.5	4.7	0.2	4.5	0.2
Other (excluding motoring offences)	49.5	42.4	3.1	39.3	5.7	0.5	5.2	1.4
Motoring offences	3.2	3.0	0.2	2.9	0.2	0.0	0.2	0.0
Total	348.2	295.2	34.1	261.1	50.0	5.0	45.1	3.0
Summary offences								
Offences (excluding motoring offences)	489.0	301.8	19.7	282.1	161.4	5.0	156.4	25.8
Motoring offences	499.3	388.1	4.1	384.0	88.8	0.3	88.6	22.3
Total	988.3	689.9	23.8	666.1	250.3	5.3	245.0	48.1
All offences⁽²⁾	1,336.5	985.1	57.9	927.2	300.3	10.3	290.0	51.1

(1) Includes sex 'not stated' and other offenders, i.e. companies, public bodies etc.

(2) May not sum due to rounding.

Table Q4.3 - Conviction ratio⁽¹⁾ by offence group, 12 months ending June 2001 to 12 months ending June 2011⁽²⁾

England and Wales	Percentages											
	Jun 01	Jun 02	Jun 03	Jun 04	Jun 05	Jun 06	Jun 07	Jun 08	Jun 09	Jun 10	Jun 11	
Offence group	12 months ending											
Indictable offences												
Violence against the person	45.4	47.3	48.5	50.0	58.3	61.8	66.7	69.9	68.2	65.8	69.0	
Sexual offences	49.6	50.4	46.6	48.1	50.5	50.9	56.5	59.8	56.4	53.9	59.6	
Burglary	60.5	60.1	62.0	64.9	70.6	73.3	76.1	77.3	76.1	74.1	76.2	
Robbery	44.2	46.6	54.5	54.9	61.4	58.1	60.4	65.6	64.2	61.7	63.6	
Theft and handling stolen goods	77.5	77.6	78.3	79.8	83.6	84.8	85.8	88.4	89.6	89.2	89.9	
Fraud and forgery	70.2	72.4	71.5	73.6	77.6	78.9	79.7	84.5	83.8	78.9	83.4	
Criminal damage	58.2	58.6	59.9	62.1	69.3	71.4	73.3	77.2	78.8	78.2	79.1	
Drug offences	84.9	86.4	86.4	87.9	89.7	90.5	89.9	92.2	92.5	91.8	91.6	
Other (excluding motoring offences)	51.0	50.6	50.8	54.6	60.5	61.5	62.5	63.8	65.3	70.5	72.9	
Motoring offences	73.6	73.1	77.4	77.7	83.0	84.3	87.8	86.9	88.6	87.3	88.9	
Total	64.8	65.2	65.8	67.3	72.2	73.6	75.7	79.1	79.6	79.1	81.1	
Summary offences												
Offences (excluding motoring offences)	78.0	77.6	78.0	78.2	79.5	80.2	81.5	82.7	83.6	82.1	81.3	
Motoring offences	76.7	76.0	76.6	77.7	79.1	80.7	83.0	84.7	85.3	85.7	86.5	
Total	77.3	76.7	77.2	77.9	79.3	80.5	82.3	83.8	84.5	83.9	83.9	
All offences	74.0	73.6	74.2	75.4	77.7	78.9	80.8	82.7	83.3	82.7	83.1	

(1) Proportion of defendants proceeded against who were found guilty.

(2) Excludes convictions data for Cardiff magistrates' court for April, July, and August 2008.

Sentencing [Tables Q5.1 – Q5.9]

When someone is convicted of a crime, they will be given a sentence by a court which reflects the seriousness of the offence or offences committed by the offender. Sentences are generally time spent in prison, a community sentence, a fine or discharge.

In the year ending June 2011 there were 1.34 million¹⁴ offenders sentenced following a criminal conviction, a decrease of 3.9 per cent from the year ending June 2010. Compared to the previous 12 month period there was:

- a decrease of 6.3 per cent in offenders sentenced for summary offences (988,700 in the year ending June 2011) but an increase of 3.7 per cent for offenders sentenced for indictable offences (including triable-either-way offences) (to 346,800).
- an increase of 5.6 per cent in offenders sentenced at the Crown Court (to 103,100 in this period) and a decrease of 4.6 per cent in offenders sentenced at magistrates' courts (1.23 million offenders sentenced).

Sentence outcomes for all offences

Custodial sentences

In the year ending June 2011 there were 102,000 persons sentenced to immediate custody, an increase of 2.4 per cent compared to the same period a year earlier but a fall of 2.2 per cent since the year ending June 2001. The custody rate¹⁵ of 7.7 per cent in the period ending June 2011 is the highest since the year ending June 2002 (when it was 8.1 per cent). The custody rate was 3.9 per cent at magistrates' courts and 52.9 per cent at the Crown Court.

Of the 102,000 persons sentenced to immediate custody in the 12 months ending June 2011:

- The average custodial sentence length (ASCL¹⁶) was 14.1 months. This was an increase of 0.3 months from the previous 12 month period and an increase of 2.4 months on the same period a decade earlier.
- There were 1,276 indeterminate sentences handed down in this period.
 - This was made up of 910 Indeterminate sentences for Public Protection (IPP's) – down from 983 in the 12 month period ending June 2010, and;
 - The number of life sentences fell from 400 in the year ending June 2010 to 366 in the current 12 month period; this is the lowest figure in the last decade.

¹⁴ Includes 7,500 known organisations such as companies and public bodies.

¹⁵ Custody rate: proportion of persons convicted and sentenced who are given a custodial sentence.

¹⁶ ACSL excludes life/indeterminate sentences

- There were 47,600 custodial sentences handed down at magistrates' courts and 54,400 at the Crown Court; this was the third consecutive 12 month period where more custodial sentences were given at the Crown Court than at magistrates' courts.
- The custody rates vary by the seriousness of the offence; the custody rate for indictable was 24.3 per cent while for summary offences the custody rate was 1.8 per cent – this has changed little over the past decade.
- ACSL also varies depending on the seriousness of the offence; the ACSL for indictable offences was 16.5 months whilst for summary motoring offences the figure was 3.1 months and for summary non-motoring offences 2.5 months.
- Of the determinate custodial sentences handed down in the 12 months ending June 2011 there was a rise of 2.1 per cent in the number of sentences of 12 months or less compared to the previous period – from 69,400 to 70,900. There were also rises in the number of sentences of over 12 months to 4 years –from 23,500 to 24,100 – and a rise of 8.9 per cent in the number of sentences over 4 years (excluding life and indeterminate sentences).

Suspended Sentence Orders

In the year ending June 2011 there were 48,700 Suspended Sentence Orders imposed, an increase of 4.9 per cent from the previous 12 month period. Of these sentences:

- 26,600 persons were given a suspended sentence at the magistrates' courts, an increase of 4.4 per cent on the previous 12 month period. Despite more than half (54.6 per cent) of suspended sentences being given at magistrates' courts they accounted for only 2.2 per cent of sentences handed down at magistrates' courts in the current 12 month period.
- 22,100 suspended sentences were given at the Crown Court, an increase of 5.5 per cent on the 12 months ending June 2010. Of those sentenced at the Crown Court, 21.5 per cent were given a suspended sentence; this was little change from the previous 12 month period.

Community sentences

There were 183,200 community sentences handed down in the 12 months ending June 2011. The community sentence rate for all ages was 13.8 per cent, this is up slightly from 13.6 per cent in the previous 12 month period and up from 11.6 per cent in the year ending June 2001.

- There were 138,200 community sentences given to adults in the current period, this was 11.0 per cent of all adults sentenced.
- There were 45,000 community sentences given to juveniles in the current period, this was down by 11.1 per cent on the previous period. Community sentences were given to 65.4 per cent of juveniles sentenced. The majority of juveniles given a community sentence are given either a referral order (51.9 per cent of all juvenile community sentences) or a Youth Rehabilitation Order (YRO) (41.9 per cent of juvenile community sentences).

- Of the community sentences handed down 164,500 were given at a magistrates' court, a fall of 3.8 per cent on the previous period, and 18,700 were handed down at the Crown Court, a rise of 7.4 per cent on the previous period. Of all sentences given at magistrates' courts 13.3 per cent were community sentences. In contrast at the Crown Court 18.2 per cent of all offenders sentenced were given a community sentence.

Fines

Fines continue to be the most common sentence due to the large volumes issued at magistrates' courts for summary offences. In the year ending June 2011 there were 872,200 fines handed down (99.7 per cent of these being issued at magistrates' courts). Of the offenders receiving fines in this period:

- The majority (93.1 per cent) were issued for summary offences.
- There were 60,200 fines issued for indictable offences, offences involving *theft and handling* and *drugs* accounted for 67.8 per cent of fines given. The fine rate for indictable offences at all courts was 17.4 per cent which is a decrease from 24.6 per cent in the year ending June 2001.
- The mean fine amount was £223 for all offences and the median fine amount was £175. These were similar to the averages in the year ending June 2010 when the mean was £221 and the median £175 but they have risen since the year ending June 2001 when the median fine amount was £100 and the mean £143.

Other sentences [Table Q 5.7 & Q5.8]

Other sentences comprise absolute and conditional discharges and 'otherwise dealt with'. The latter category deals with a miscellaneous group containing: mental health disposals; ancillary orders (e.g. compensation or confiscation orders); and other procedural disposals. There were 129,400 other sentences handed down in this period. These comprised:

- 88,700 conditional discharges; an increase of 2.0 per cent from a year earlier but a fall of 11.4 per cent since the year ending June 2001.
- 8,400 absolute discharges; this was a fall of 7.7 per cent from the previous period and a fall of 45.3 per cent from the year ending June 2001.
- 32,300 offenders 'otherwise dealt with', an increase of 2.1 per cent from the previous period.

Sentence outcomes by age band

Adults:

There were 1.26 million adults sentenced in the 12 months ending June 2011; this was a 3.5 per cent fall from the number sentenced in the 12 months to June 2010 and a 2.2 per cent fall from the 12 months to June 2001. Of those adults sentenced:

- Sixty-eight per cent were given a fine, this is down from 69.9 per cent in the year ending June 2010 and is down from 73.8 per cent in the year ending June 2001.

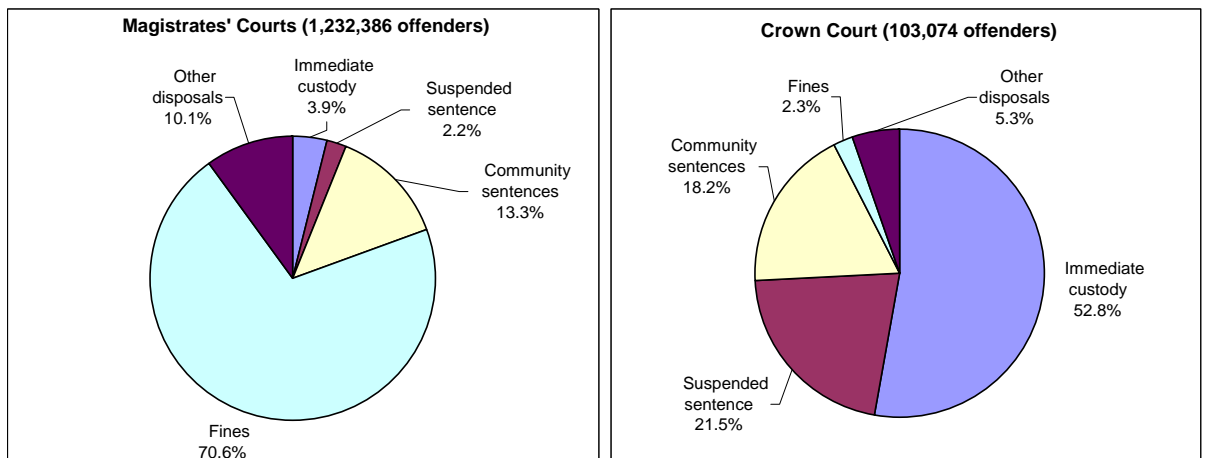
- There were 97,800 immediate custodial sentences handed down, this was 7.8 per cent of all adults sentenced. The custody rate was up by 0.5 percentage points on the previous period.

Juveniles:

There were 68,700 juveniles sentenced in the year ending June 2011, this was a decrease of 10.6 per cent on the previous 12 month period and is down by 26.4 per cent on the 12 months ending June 2001. Of those sentenced:

- There were 4,200 custodial sentences handed down, this was 6.1 per cent of all juveniles sentenced. The percentage of juveniles sentenced to immediate custody has fallen from 8.2 per cent in the 12 months ending June 2001.
- There were 5,700 fines handed down, this has fallen by 22.1 per cent on the 12 months ending June 2010 and by 73.3 per cent since the year ending June 2001. Over the same period the fine rate has fallen from 23.0 per cent in the year ending June 2001, to 8.3 per cent in the current period.

Figure 5.1: Sentence outcomes handed down by courts, 12 months ending June 2011



Persons sentenced by ethnicity

Data on the ethnic appearance of offenders is currently only collated for indictable offences. This is because for a number of summary offences a defendant is not required to attend court (e.g. TV license evasion) and an observation regarding ethnicity can therefore not be made. In the year ending June 2011 there were 346,000 persons sentenced for indictable offences of which 313,200 (90.5 per cent) had their ethnicity recorded.

- The immediate custody rate for indictable offences for all ethnicities was 24.3 per cent. This varied between ethnicities with: White offenders having a custody rate of 23.5 per cent; Black offenders having a custody rate of 26.5 per cent; and Asian offenders having a custody rate of 29.2 per cent. These differences are likely to be a reflection of the different offences committed and different offender characteristics between ethnicities. For more information see the publication *Race and the Criminal Justice System*¹⁷.
- The community sentence rate also varied by ethnicity. The community sentence rate for all ethnicities sentenced for indictable offences was 30.4 per cent. This compares to 31.2 per cent for white offenders; 29.4 per cent for black offenders; 26.3 per cent for Asian offenders; and 20.3 per cent for offenders of other ethnicity.

Persons sentenced for indictable offences

In the year ending June 2011 there were 346,000 persons sentenced for indictable offences, an increase of 3.7 per cent from 333,800 in the year ending June 2010. Of these persons:

- Over half were sentenced for either theft and handling stolen goods (35.2 per cent) or drug offences (17.7 per cent).
- For theft and handling stolen goods the most common disposal is a community sentence, this disposal was given to 35.0 per cent of persons sentenced in this offence group in the year ending June 2011. For drug offences the most used disposal is the fine given to 38.7 per cent of offenders sentenced in the year ending June 2011.
- The majority of offenders sentenced for sexual offences are sentenced to immediate custody – 57.2 per cent of sentences

¹⁷ www.justice.gov.uk/publications/statistics-and-data/criminal-justice/race.htm

Figure 5.2: Percentage change in persons sentenced by indictable offence group, 12 months ending June 2010 to 12 months ending June 2011

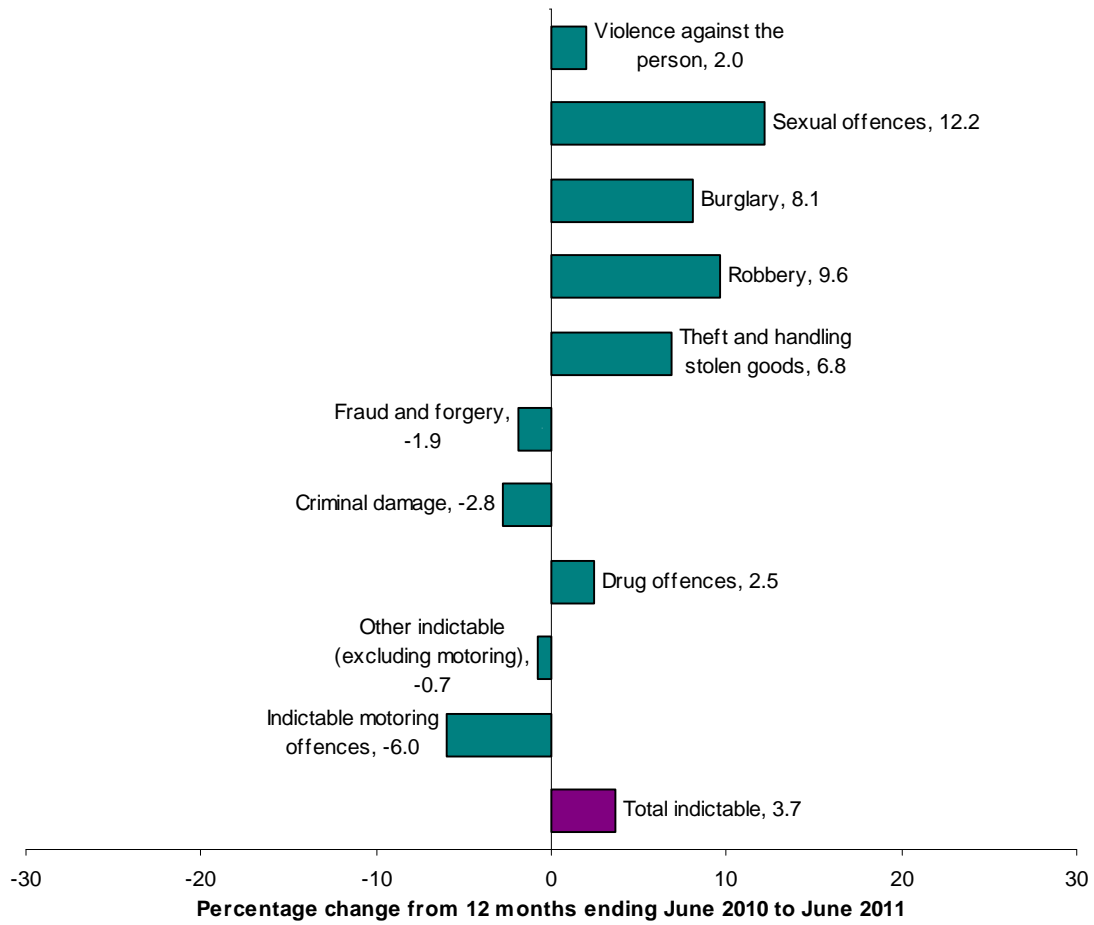


Table Q5.1 Offenders sentenced by offence group and outcome, all courts, 12 months ending June 2001 to 12 months ending June 2011

England and Wales	Offence group	Outcome	12 months ending									Number of offenders	
			Jun 2001	Jun 2002	Jun 2003	Jun 2004	Jun 2005	Jun 2006	Jun 2007	Jun 2008 ⁽²⁾	Jun 2009 ⁽²⁾		Jun 2010
	All indictable offences	Total number sentenced	319,435	327,907	337,782	327,973	306,244	308,029	303,790	313,875	321,183	334,533	346,778
		<i>Number given:</i>											
		Immediate custody	78,872	83,539	82,616	81,235	77,294	75,582	71,980	77,680	79,603	80,561	83,907
		Suspended sentence	2,221	2,069	2,040	2,021	2,547	13,134	25,024	28,621	29,185	32,404	34,679
		Community sentences	99,844	104,810	112,067	110,014	110,835	108,487	102,818	102,630	107,404	105,703	105,167
		Fines	78,469	77,208	78,939	72,822	60,334	55,687	49,697	48,103	53,542	57,729	60,247
		Absolute discharge	1,983	2,341	3,145	2,909	2,392	2,348	2,121	2,139	1,705	1,761	1,839
		Conditional discharge	47,519	47,203	47,435	45,932	40,864	40,111	39,170	41,485	38,816	40,455	42,674
		Otherwise dealt with	10,527	10,737	11,540	13,040	11,978	12,680	12,980	13,217	10,928	15,920	18,265
		Average custodial sentence length (months) ⁽¹⁾	14.4	15.0	15.7	15.8	16.3	15.3	15.3	15.4	16.3	16.4	16.5
	Summary non-motoring offences	Total number sentenced	480,218	450,812	476,252	533,131	512,661	501,697	488,549	494,992	502,328	506,163	489,273
		<i>Number given:</i>											
		Immediate custody	9,145	9,248	9,411	10,346	11,630	12,327	12,601	14,200	14,455	14,506	14,542
		Suspended sentence	256	247	223	268	501	3,698	7,081	7,655	8,134	9,397	9,753
		Community sentences	34,233	37,327	42,545	46,824	54,633	58,934	62,005	66,601	67,168	64,950	62,892
		Fines	379,778	348,499	365,873	409,994	384,091	365,623	345,179	341,447	358,926	359,536	344,777
		Absolute discharge	4,652	4,658	4,512	4,112	4,112	3,874	3,609	3,572	2,981	2,991	2,767
		Conditional discharge	43,975	42,932	44,118	47,198	43,570	43,406	43,531	45,775	40,797	43,032	43,179
		Otherwise dealt with	8,179	7,900	8,405	13,989	14,124	13,835	14,543	15,742	9,867	11,751	11,363
		Average custodial sentence length (months) ⁽¹⁾	2.7	2.7	2.7	2.8	2.8	2.8	2.8	2.7	2.6	2.6	2.5
	Summary motoring offences	Total number sentenced	591,118	586,390	616,434	705,622	688,891	645,880	613,403	589,021	548,726	548,725	499,409
		<i>Number given:</i>											
		Immediate custody	16,214	17,015	17,099	16,564	13,940	11,548	8,604	7,272	5,744	4,483	3,527
		Suspended sentence	364	351	363	372	773	5,104	6,762	5,618	4,956	4,655	4,297
		Community sentences	26,692	29,730	38,215	39,219	37,490	31,129	26,861	24,066	20,988	17,748	15,144
		Fines	522,812	511,260	530,964	619,679	608,325	572,823	548,087	530,144	497,464	510,098	467,126
		Absolute discharge	8,751	9,190	11,444	9,087	7,459	6,332	5,519	4,273	4,273	4,368	3,812
		Conditional discharge	8,676	9,179	8,899	9,681	8,810	8,060	6,778	5,613	3,650	3,449	2,861
		Otherwise dealt with	7,609	9,665	9,450	11,020	12,094	10,884	10,792	11,404	11,641	3,924	2,642
		Average custodial sentence length (months) ⁽¹⁾	3.4	3.4	3.5	3.5	3.4	3.4	3.4	3.3	3.1	3.2	3.1
	All offences	Total number sentenced	1,390,771	1,365,109	1,430,468	1,566,726	1,507,796	1,455,606	1,405,742	1,397,888	1,372,237	1,389,421	1,335,460
		<i>Number given:</i>											
		Immediate custody	104,231	109,802	109,126	108,145	102,864	99,457	93,185	99,152	99,802	99,550	101,976
		Suspended sentence	2,841	2,667	2,626	2,661	3,821	21,936	38,867	41,894	42,275	46,456	48,729
		Community sentences	160,769	171,867	192,827	196,057	202,958	198,950	191,684	193,297	195,570	188,401	183,203
		Fines	981,059	936,967	975,776	1,102,495	1,052,750	994,133	942,963	919,694	909,932	927,363	872,150
		Absolute discharge	15,386	16,190	20,268	16,508	13,963	12,554	11,249	10,615	8,959	9,120	8,418
		Conditional discharge	100,170	99,314	100,452	102,811	93,244	91,577	89,479	92,873	83,263	86,936	88,714
		Otherwise dealt with	26,315	28,302	29,394	38,049	37,196	37,399	38,315	40,363	32,436	31,595	32,270
		Average custodial sentence length (months) ⁽¹⁾	11.6	12.2	12.7	12.6	13.0	12.3	12.4	12.6	13.5	13.8	14.1

(1) Excludes life and indeterminate sentences.

(2) Excludes data for Cardiff Magistrates' court for April, July and August 2008.

Table Q5.2 Offenders sentenced by offence group and outcome, magistrates' courts, 12 months ending June 2001 to 12 months ending June 2011

England and Wales		12 months ending												Number of offenders			
		Jun 2001	Jun 2002	Jun 2003	Jun 2004	Jun 2005	Jun 2006	Jun 2007	Jun 2008 ⁽²⁾	Jun 2009 ⁽²⁾	Jun 2010	Jun 2011					
Offence group	Outcome																
All indictable offences	Total number sentenced	251,527	257,469	264,248	254,619	234,446	235,051	229,953	233,334	235,533	243,299	250,361					
	<i>Number given:</i>																
	Immediate custody	35,560	38,712	38,016	37,044	33,869	33,061	30,432	32,164	30,661	30,378	31,372					
	Suspended sentence	536	513	506	533	891	7,282	12,286	12,285	11,793	12,562	13,589					
	Community sentences	81,936	85,905	90,240	88,089	89,525	89,268	88,610	89,248	93,055	90,040	88,324					
	Fines	76,723	75,305	76,953	70,821	58,462	54,027	48,021	46,466	51,985	56,062	58,646					
	Absolute discharge	1,907	2,265	3,077	2,847	2,344	2,298	2,066	2,088	1,647	1,701	1,755					
	Conditional discharge	45,649	45,254	45,356	43,704	38,806	38,202	37,364	39,576	36,958	38,362	40,491					
	Otherwise dealt with	9,216	9,515	10,100	11,581	10,549	10,913	11,174	11,507	9,434	14,194	16,184					
	Average custodial sentence length (months)	3.0	3.0	3.0	3.0	2.9	2.9	2.9	2.8	2.6	2.6	2.5					
Summary non-motoring offences	Total number sentenced	477,800	448,414	473,812	530,487	510,020	498,653	485,079	491,070	498,060	500,685	483,531					
	<i>Number given:</i>																
	Immediate custody	8,588	8,698	8,908	9,786	11,047	11,602	11,783	13,162	13,251	13,153	12,901					
	Suspended sentence	234	229	207	256	487	3,581	6,738	7,257	7,558	8,422	8,864					
	Community sentences	33,346	36,406	41,623	45,882	53,585	57,995	60,934	65,392	65,928	63,317	61,163					
	Fines	379,424	348,144	365,518	409,598	383,747	365,283	344,764	341,064	358,595	359,065	344,346					
	Absolute discharge	4,646	4,652	5,674	4,507	4,110	3,862	3,600	3,563	2,973	2,974	2,753					
	Conditional discharge	43,451	42,452	43,606	46,625	43,082	42,879	42,993	45,185	40,152	42,301	42,414					
	Otherwise dealt with	8,111	7,832	8,278	13,833	13,962	13,551	14,267	15,447	9,603	11,453	11,090					
	Average custodial sentence length (months)	2.7	2.7	2.7	2.7	2.7	2.7	2.7	2.7	2.6	2.5	2.5					
Summary motoring offences	Total number sentenced	590,357	585,596	615,620	704,836	688,125	645,171	612,572	587,993	547,734	547,827	498,494					
	<i>Number given:</i>																
	Immediate custody	15,927	16,707	16,819	16,281	13,701	11,343	8,393	7,031	5,501	4,262	3,303					
	Suspended sentence	360	350	357	370	770	5,070	6,686	5,520	4,849	4,502	4,148					
	Community sentences	26,493	29,522	37,944	38,988	37,266	30,949	26,721	23,929	20,822	17,619	14,997					
	Fines	522,594	511,046	530,763	619,444	608,092	572,613	547,821	529,778	497,115	509,799	466,821					
	Absolute discharge	8,749	9,190	11,443	9,086	7,457	6,331	5,519	4,903	4,273	4,366	3,809					
	Conditional discharge	8,661	9,160	8,881	9,663	8,791	8,046	6,755	5,577	3,623	3,425	2,840					
	Otherwise dealt with	7,573	9,621	9,413	11,004	12,048	10,819	10,677	11,255	11,551	3,854	2,576					
	Average custodial sentence length (months)	3.4	3.4	3.5	3.5	3.4	3.4	3.4	3.3	3.1	3.2	3.1					
All offences	Total number sentenced	1,319,684	1,291,479	1,353,680	1,489,942	1,432,591	1,378,875	1,327,604	1,312,397	1,281,327	1,291,811	1,232,386					
	<i>Number given:</i>																
	Immediate custody	60,075	64,117	63,743	63,111	58,617	56,006	50,608	52,357	49,413	47,793	47,576					
	Suspended sentence	1,130	1,092	1,070	1,159	2,148	15,933	25,710	25,082	24,200	25,486	26,601					
	Community sentences	141,775	151,833	169,807	172,959	180,376	178,112	176,265	178,569	179,805	170,976	164,484					
	Fines	978,741	934,495	973,234	1,099,863	1,050,301	991,923	940,606	917,308	907,695	924,926	869,813					
	Absolute discharge	15,302	16,108	20,194	13,911	12,491	11,185	10,554	8,893	9,041	8,317	8,317					
	Conditional discharge	97,761	96,866	97,843	99,992	90,679	89,127	87,112	90,338	80,733	84,088	85,745					
	Otherwise dealt with	24,900	26,968	27,790	36,418	36,559	35,283	36,118	38,209	30,588	29,501	29,850					
	Average custodial sentence length (months)	3.1	3.1	3.1	3.1	3.0	3.0	2.9	2.8	2.7	2.6	2.5					

(1) Excludes data for Cardiff magistrates' court for April, July and August 2008.

Table Q5.3 Offenders sentenced by offence group and outcome, the Crown Court, 12 months ending June 2001 to 12 months ending June 2011

England and Wales		12 months ending												Number of offenders	
Offence group	Outcome	Jun 2001	Jun 2002	Jun 2003	Jun 2004	Jun 2005	Jun 2006	Jun 2007	Jun 2008	Jun 2009	Jun 2010	Jun 2011			
All indictable offences	Total number sentenced	67,908	70,438	73,534	73,354	71,798	72,978	73,837	80,541	85,650	91,234	96,417			
	<i>Number given:</i>														
	Immediate custody	43,312	44,827	44,600	44,191	43,425	42,521	41,548	45,516	48,942	50,183	52,535			
	Suspended sentence	1,685	1,556	1,534	1,488	1,656	5,852	12,738	16,336	17,392	19,842	21,090			
	Community sentences	17,908	18,905	21,827	21,925	21,310	19,219	14,208	13,382	14,349	15,663	16,843			
	Fines	1,746	1,903	1,986	2,001	1,872	1,660	1,676	1,637	1,557	1,667	1,601			
	Absolute discharge	76	76	68	62	48	50	55	51	58	60	84			
	Conditional discharge	1,870	1,949	2,079	2,228	2,058	1,909	1,806	1,909	1,858	2,093	2,183			
	Otherwise dealt with	1,311	1,222	1,440	1,459	1,429	1,767	1,806	1,710	1,494	1,726	2,081			
	Average custodial sentence length (months) ⁽¹⁾	23.8	25.5	26.7	26.6	26.9	25.3	24.9	24.8	25.1	25.1	25.1	25.1		
Summary non-motoring offences	Total number sentenced	2,418	2,398	2,440	2,644	2,641	3,044	3,470	3,922	4,268	5,478	5,742			
	<i>Number given:</i>														
	Immediate custody	557	550	503	560	583	725	818	1,038	1,204	1,353	1,641			
	Suspended sentence	22	18	16	12	14	117	343	398	576	975	889			
	Community sentences	887	921	922	942	1,048	1,039	1,071	1,209	1,240	1,633	1,729			
	Fines	354	355	355	396	344	340	415	383	331	471	431			
	Absolute discharge	6	6	5	5	2	12	9	9	8	17	14			
	Conditional discharge	524	480	512	573	488	527	538	590	645	731	765			
	Otherwise dealt with	68	68	127	156	162	284	276	295	264	298	273			
	Average custodial sentence length (months) ⁽¹⁾	3.4	3.4	3.4	3.5	3.6	3.9	3.7	3.4	3.3	3.2	3.2			
Summary motoring offences	Total number sentenced	761	794	814	786	766	709	831	1,028	992	898	915			
	<i>Number given:</i>														
	Immediate custody	287	308	280	283	239	205	211	241	243	221	224			
	Suspended sentence	4	1	6	2	3	34	76	98	107	153	149			
	Community sentences	199	208	271	231	224	180	140	137	176	129	147			
	Fines	218	214	201	235	233	210	266	366	349	299	305			
	Absolute discharge	2	0	1	1	2	1	0	1	0	2	3			
	Conditional discharge	15	19	18	18	19	14	23	36	27	24	21			
	Otherwise dealt with	36	44	37	16	46	65	115	149	90	70	66			
	Average custodial sentence length (months) ⁽¹⁾	3.8	3.8	3.8	3.9	3.8	3.6	3.6	3.4	3.3	3.3	3.1			
All offences	Total number sentenced	71,087	73,630	76,788	76,784	75,205	76,731	78,138	85,491	90,910	97,610	103,074			
	<i>Number given:</i>														
	Immediate custody	44,156	45,685	45,383	45,034	44,247	43,451	42,577	46,795	50,389	51,757	54,400			
	Suspended sentence	1,711	1,575	1,556	1,502	1,673	6,003	13,157	16,832	18,075	20,970	22,128			
	Community sentences	18,994	20,034	23,020	23,098	22,582	20,438	15,419	14,728	15,765	17,425	18,719			
	Fines	2,318	2,472	2,542	2,632	2,449	2,210	2,357	2,386	2,237	2,437	2,337			
	Absolute discharge	84	82	74	68	52	63	64	61	66	79	101			
	Conditional discharge	2,409	2,448	2,609	2,819	2,565	2,450	2,367	2,535	2,530	2,848	2,969			
	Otherwise dealt with	1,415	1,334	1,604	1,631	1,637	2,116	2,197	2,154	1,848	2,094	2,420			
	Average custodial sentence length (months) ⁽¹⁾	23.4	25.1	26.3	26.2	26.5	24.8	24.4	24.1	24.4	24.4	24.4			

(1) Excludes life and indeterminate sentences.

Table Q5.4 Offenders and persons sentenced by outcome and rate, 12 months ending June 2001 to 12 months ending June 2011

England and Wales	12 months ending										
	Jun 2001	Jun 2002	Jun 2003	Jun 2004	Jun 2005	Jun 2006	Jun 2007	Jun 2008 ⁽²⁾	Jun 2009 ⁽²⁾	Jun 2010	Jun 2011
Total persons sentenced	1,380,424	1,355,710	1,421,164	1,555,914	1,498,330	1,447,086	1,398,066	1,390,030	1,363,716	1,381,186	1,327,928
Males	1,128,783	1,112,840	1,167,060	1,276,008	1,218,609	1,165,071	1,118,649	1,092,401	1,030,674	1,032,695	984,332
Females	251,641	242,870	254,104	279,906	279,721	282,015	279,417	289,396	300,627	313,284	300,210
Not Stated	*	*	*	*	*	*	*	8,233	32,415	35,207	43,386
Total offenders sentenced of which: Others	1,390,771	1,365,109	1,430,468	1,566,726	1,507,796	1,455,606	1,405,742	1,397,888	1,372,237	1,389,421	1,335,460
	10,347	9,399	9,304	10,812	9,466	8,520	7,676	7,858	8,521	8,235	7,532
Sentence											
Immediate custody Rate ⁽¹⁾	104,231 7.6	109,802 8.1	109,126 7.7	108,145 7.0	102,864 6.9	99,457 6.9	93,185 6.7	99,152 7.1	99,802 7.3	99,550 7.2	101,976 7.7
Suspended sentence Rate ⁽¹⁾	2,841 0.2	2,667 0.2	2,626 0.2	2,661 0.2	3,821 0.3	21,936 1.5	38,867 2.8	41,894 3.0	42,275 3.1	46,456 3.4	48,729 3.7
Community sentences Rate ⁽¹⁾	160,769 11.6	171,867 12.7	192,827 13.6	196,057 12.6	202,958 13.5	198,550 13.7	191,684 13.7	193,297 13.9	195,570 14.3	188,401 13.6	183,203 13.8
Fine Rate	981,059 70.5	936,967 68.6	975,776 68.2	1,102,495 70.4	1,052,750 69.8	994,133 68.3	942,963 67.1	919,694 65.8	909,932 66.3	927,363 66.7	872,150 65.3
Absolute discharge Rate	15,386 1.1	16,190 1.2	20,268 1.4	16,508 1.1	13,963 0.9	12,554 0.9	11,249 0.8	10,615 0.8	8,959 0.7	9,120 0.7	8,418 0.6
Conditional discharge Rate	100,170 7.2	99,314 7.3	100,452 7.0	102,811 6.6	93,244 6.2	91,577 6.3	89,479 6.4	92,873 6.6	83,263 6.1	86,936 6.3	88,714 6.6
Otherwise dealt with Rate	26,315 1.9	28,302 2.1	29,394 2.1	38,049 2.4	38,196 2.5	37,399 2.6	38,315 2.7	40,363 2.9	32,436 2.4	31,595 2.3	32,270 2.4

(1) Rates are calculated on persons for sentences of immediate custody, suspended sentence and community sentence as 'others' cannot receive this sentence.

(2) Excludes data for Cardiff magistrates' court for April, July and August 2008.

Table Q5.5 Persons sentenced to immediate custody and average custodial sentence length at all courts by offence group, 12 months ending June 2001 to 12 months ending June 2011

England and Wales	12 months ending												Persons sentenced	
	Jun 2001	Jun 2002	Jun 2003	Jun 2004	Jun 2005	Jun 2006	Jun 2007	Jun 2008 ⁽²⁾	Jun 2009 ⁽²⁾	Jun 2010	Jun 2011			
Violence against the person	11,142	11,547	11,661	11,950	12,584	12,635	12,289	12,821	13,984	14,041	14,106			
Sexual offences	2,394	2,435	2,548	2,655	2,842	2,705	2,846	2,881	2,911	3,126	3,458			
Burglary	12,773	12,950	12,501	11,643	9,937	9,311	9,234	9,515	10,082	9,900	11,167			
Robbery	4,541	5,231	5,722	5,067	4,789	4,546	4,773	4,836	5,279	4,887	5,362			
Theft and handling stolen goods	25,421	27,813	26,402	24,485	21,184	20,278	18,828	20,864	20,547	20,470	22,483			
Fraud and forgery	3,847	3,696	3,808	4,169	4,079	4,801	4,544	5,789	5,468	4,983	4,559			
Criminal damage	1,194	1,161	1,230	1,216	1,322	1,287	1,325	1,249	1,082	1,069	1,146			
Drug offences	8,052	8,671	8,158	8,085	7,768	7,747	7,534	9,133	9,078	9,937	9,329			
Other (excl motoring offences)	7,683	7,983	8,315	9,601	10,620	10,397	8,986	9,091	9,816	10,946	11,206			
Indictable motoring offences	1,825	2,052	2,271	2,364	2,169	1,875	1,621	1,501	1,356	1,202	1,091			
All indictable offences	78,872	83,539	82,616	81,235	77,294	75,582	71,980	77,680	79,603	80,561	83,907			
Summary non-motoring offences	9,145	9,248	9,411	10,346	11,630	12,327	12,601	14,200	14,455	14,506	14,542			
Summary motoring offences	16,214	17,015	17,099	16,564	13,940	11,548	8,604	7,272	5,744	4,483	3,527			
All summary offences	25,359	26,263	26,510	26,910	25,570	23,875	21,205	21,472	20,199	18,989	18,069			
All offences	104,231	109,802	109,126	108,145	102,864	99,457	93,185	99,152	99,802	99,550	101,976			

England and Wales	12 months ending												Average custodial sentence length ⁽¹⁾	
	Jun 2001	Jun 2002	Jun 2003	Jun 2004	Jun 2005	Jun 2006	Jun 2007	Jun 2008 ⁽²⁾	Jun 2009 ⁽²⁾	Jun 2010	Jun 2011			
Violence against the person	16.1	17.1	18.4	18.5	19.0	17.0	17.0	16.5	17.5	18.0	17.5			
Sexual offences	38.4	38.8	40.1	38.9	41.9	40.5	42.0	43.2	46.9	47.9	51.4			
Burglary	16.3	16.9	17.4	17.3	17.6	17.1	16.9	16.7	18.2	18.7	18.9			
Robbery	35.9	37.4	39.1	39.2	36.5	33.5	30.8	32.5	32.9	33.8	35.7			
Theft and handling stolen goods	4.2	4.1	4.1	4.2	4.4	4.3	4.2	4.0	4.1	4.1	4.2			
Fraud and forgery	8.6	8.5	8.4	8.7	10.0	10.4	12.7	10.3	10.6	10.5	11.8			
Criminal damage	15.6	16.4	16.2	16.1	16.9	13.0	12.7	13.4	17.6	18.2	18.3			
Drug offences	31.4	33.9	34.9	36.3	36.5	35.1	32.6	32.5	32.3	31.5	30.6			
Other (excl motoring offences)	8.9	9.8	9.8	9.0	9.2	8.7	9.5	10.3	10.4	9.6	9.9			
Indictable motoring offences	7.9	8.1	8.3	8.7	8.7	8.6	9.1	9.1	9.3	9.4	9.6			
All indictable offences	14.4	15.0	15.7	15.8	16.3	15.3	15.3	15.4	16.3	16.4	16.5			
Summary non-motoring offences	2.7	2.7	2.7	2.8	2.8	2.8	2.8	2.7	2.6	2.6	2.5			
Summary motoring offences	3.4	3.4	3.5	3.5	3.4	3.4	3.4	3.3	3.1	3.2	3.1			
All summary offences	3.2	3.2	3.2	3.2	3.1	3.1	3.0	2.9	2.8	2.7	2.7			
All offences	11.6	12.2	12.7	12.6	13.0	12.3	12.4	12.6	13.5	13.8	14.1			

(1) Excludes life and indeterminate sentences.

(2) Excludes data for Cardiff magistrates' court for April, July and August 2008.

Table Q5.7 Juveniles sentenced for all offences by type of sentence (detailed), 12 months ending June 2001 to 12 months ending June 2011

Sentence	12 months ending											Persons sentenced		
	Jun 2001	Jun 2002	Jun 2003	Jun 2004	Jun 2005	Jun 2006	Jun 2007	Jun 2008 ⁽²⁾	Jun 2009 ⁽²⁾	Jun 2010	Jun 2011			
Immediate custodial sentences														
S90-92 PCC(S) Act 2000	545	639	605	506	541	455	391	438	478	393	410			
Secure training order	0	*	*	*	*	*	*	*	*	*	*			
Detention and training order	7,098	6,835	6,116	5,776	5,625	5,475	5,438	5,189	4,716	3,971	3,704			
Young offender institution	-	-	3	4	4	-	-	-	-	-	-			
Extended sentence for public protection	*	*	*	*	5	121	96	97	20	13	17			
Indeterminate sentence for public protection (IPP)	*	*	*	*	5	39	65	70	40	33	31			
Total immediate custody	7,643	7,474	6,724	6,286	6,180	6,090	5,990	5,794	5,254	4,410	4,162			
Community sentences														
Community rehabilitation order	2,371	2,422	2,283	2,212	1,963	1,671	1,770	1,771	1,679	1,077	96			
Supervision order	10,398	11,210	9,915	10,100	10,191	10,837	11,977	10,845	8,773	5,251	248			
Community punishment order	4,649	3,826	2,921	2,681	2,562	2,021	1,889	1,834	1,688	1,009	40			
Attendance centre order	5,096	4,556	2,946	2,757	2,770	2,776	2,996	3,030	2,426	1,386	128			
Community punishment and rehabilitation order	1,914	1,691	1,566	1,400	1,303	1,140	1,278	1,291	1,558	1,135	49			
Curfew order	747	1,883	2,555	3,503	4,216	4,015	4,488	4,884	5,888	3,807	607			
Reparation order	7,456	7,178	3,307	3,015	3,137	3,480	3,899	4,151	3,831	3,124	1,569			
Action plan order	8,239	7,984	4,619	4,313	4,664	4,897	4,947	4,416	3,867	1,631	25			
Drug treatment and testing order	25	73	74	61	48	13	12	7	5	-	-			
Referral order ⁽¹⁾	*	6,560	25,689	25,427	27,847	30,020	31,538	30,880	28,502	27,190	23,355			
Community order ⁽²⁾	*	*	*	-	-	-	-	-	-	-	59			
Youth Rehabilitation order	*	*	*	*	*	*	*	*	*	4,901	18,846			
Total community sentences	40,895	47,383	55,875	55,469	58,701	60,870	64,794	63,109	58,217	50,570	44,963			
Other sentences														
Absolute or conditional discharge	18,100	15,672	14,034	13,452	12,100	12,108	11,918	11,534	10,378	10,087	9,562			
Fine	21,439	20,024	12,040	15,962	14,702	12,859	10,957	9,709	8,533	7,342	5,716			
Suspended sentence ⁽³⁾	-	-	-	-	-	3	-	1	-	-	-			
Otherwise dealt with	5,306	4,553	3,670	4,332	3,851	2,902	2,964	2,824	2,576	4,485	4,336			
Total other sentences	44,845	40,249	29,744	33,746	30,653	27,872	25,839	24,068	21,487	21,914	19,614			
Total sentenced	93,383	95,106	92,343	95,501	95,534	94,832	96,623	92,971	84,958	76,894	68,739			

(1) Referral orders now include numbers of extension of referral orders, and may therefore not be the same as previously published figures.

(2) Community orders were introduced by the Criminal Justice Act 2003 for offences committed from 4 April 2005.

(3) Suspended sentences are not available for juveniles

(4) Excludes data for Cardiff magistrates' court for April, July and August 2008.

Table Q5.8 Adults sentenced for all offences by type of sentence (detailed), 12 months ending June 2001 to 12 months ending June 2011

England and Wales	12 months ending												Persons sentenced	
	Jun 2001	Jun 2002	Jun 2003	Jun 2004	Jun 2005	Jun 2006	Jun 2007	Jun 2008 ⁽²⁾	Jun 2009 ⁽²⁾	Jun 2010	Jun 2011			
Immediate custodial sentences														
S90-92 PCC(S) Act 2000	17,847	17,807	16,329	14,991	14,248	13,761	13,491	13,738	13,477	13,492	12,127	8		
Young offender institution	78,673	84,361	85,364	85,761	80,999	77,032	70,916	76,987	79,599	80,258	84,276			
Unsuspected imprisonment	68	160	703	1,065	1,232	1,458	1,121	893	354	427	524			
Extended sentence of imprisonment (EPP)	*	*	*	*	18	977	1,623	1,731	1,105	950	879			
Indeterminate sentence for public protection (IPP)	*	*	*	35	179	128	33	-	-	-	-			
Intermittent custody	96,588	102,328	102,402	101,859	96,684	93,367	87,195	93,358	94,548	95,140	97,814			
Total immediate custody														
Community sentences														
Community rehabilitation order	53,898	58,402	63,098	59,404	52,926	9,092	744	257	207	169	49			
Community punishment order	45,066	45,767	48,163	49,424	48,386	11,916	1,301	439	251	156	29			
Attendance centre order	600	538	496	585	684	377	299	232	201	206	106			
Community punishment and rehabilitation order	15,718	12,199	13,797	14,240	14,237	3,381	410	174	170	140	19			
Curfew order	2,366	2,864	5,362	9,081	11,117	3,865	1,929	1,658	1,456	927	674			
Drug treatment and testing order	2,226	4,714	5,999	7,828	8,644	1,506	88	11	1	1	1			
Referral order ⁽¹⁾	*	*	37	26	-	-	-	-	-	-	-			
Community order ⁽²⁾	*	*	*	*	8,263	107,543	122,119	127,417	135,067	136,232	137,362			
Total community sentences	119,874	124,484	136,952	140,588	144,257	137,680	126,890	130,188	137,353	137,831	138,240			
Other sentences														
Absolute or conditional discharge	97,138	99,578	106,414	105,639	94,883	91,791	88,653	91,849	81,685	85,856	87,462			
Fine	949,640	907,859	954,761	1,076,284	1,028,921	973,051	924,579	902,342	893,269	911,931	859,030			
Suspended sentence ⁽³⁾	2,841	2,667	2,626	2,661	3,821	21,933	38,867	41,893	42,275	46,456	48,729			
Otherwise dealt with	20,960	23,688	25,666	33,382	34,230	34,432	35,259	37,429	29,628	27,078	27,914			
Total other sentences	1,070,579	1,033,792	1,089,468	1,217,966	1,161,855	1,121,207	1,087,358	1,073,513	1,046,857	1,071,321	1,023,135			
Total sentenced	1,287,041	1,260,604	1,328,822	1,460,413	1,402,796	1,352,254	1,301,443	1,297,059	1,278,758	1,304,292	1,259,189			

(1) Referral orders now include numbers of extension of referral orders, and may therefore not be the same as previously published figures.

(2) Community orders were introduced by the Criminal Justice Act 2003 for offences committed from 4 April 2005.

(3) Fully suspended sentence for offences committed prior to 4 April 2005, suspended sentence order for offences committed from 4 April 2005.

(4) Excludes data for Cardiff magistrates' court for April, July and August 2008.

Table Q5.9 Persons⁽¹⁾ sentenced at all courts for indictable offences by ethnicity and result, 12 months ending June 2011

England and Wales	Offence type / group	Total	Ethnicity				
			White	Black	Asian	Other	Unknown
Indictable offences							
	Absolute discharge	1,831	1,434	126	63	14	194
	Conditional discharge	42,659	33,836	3,013	1,362	529	3,919
	Fine	59,474	42,967	6,062	3,187	646	6,612
	Community sentence	105,167	80,692	9,396	4,360	1,162	9,557
	Suspended sentence	34,679	25,928	2,715	1,763	722	3,551
	Immediate custody	83,907	60,977	8,465	4,841	2,392	7,232
	Otherwise dealt with	18,254	13,101	2,140	991	270	1,752
	Total	345,971	258,935	31,917	16,567	5,735	32,817

(1) Includes cases reported to the Ministry of Justice as sex ' not stated'.

Offences

[Tables Q6.1 – Q6.4]

This chapter differs from the others in the publication by counting on an all offence basis, as opposed to a principal offence basis eg. An individual offender may be convicted of more than one offence. Courts and the police typically deal with defendants charged with more than one offence.

Cautions (all offence basis)

In the 12 months ending June 2011 there were 259,200 cautions administered to 236,000 offenders, a decrease of 9.9 per cent from the 12 months ending June 2010. This decrease continues the downward trend observed from the 12 months ending June 2007 when cautions peaked at 397,200.

Of all cautions administered in the 12 months ending June 2011:

- Cautions given for *drug related offences* rose two percentage points from 15.2 per cent in the 12 months ending June 2010 to 17.3 per cent.
- *Theft and handling of stolen goods* fell 1.1 percentage points from 20.7 per cent in the 12 months ending June 2010 to 19.5 per cent. This is the lowest proportional total for *theft and handling of stolen goods* over the last eleven years.
- *Summary non-motoring* offences made up 45.6 per cent all cautions given. This is up by 0.5 percentage points on the 12 months ending June 2010 and down 8.9 percentage points on the 12 months ending June 2001.

Convictions (all offence basis)

There were 1.86 million convictions on an all offence basis (1.34 million offenders) in the 12 months ending June 2011, a fall of 5.5 per cent from the 12 months ending June 2010.

Of all convictions in the 12 months ending June 2011:

- Indictable offences accounted for 31.3 per cent of convictions, up 1.9 percentage points on the 12 months ending June 2010, representing the highest proportion of convictions for indictable offences across the eleven year period.
- Summary non-motoring offences showed an eleven year high of 32.4 per cent of all convictions, a rise of 6.7 percentage points compared with the 12 months ending June 2001.
- Summary motoring offences accounted for 36.3 per cent of all offences, the lowest proportion in the last eleven years. There has been a decrease of 11.8 per cent compared to the 12 months ending June 2010 and 39.5 per cent since the 12 months ending June 2001.

Offences per offender

The number of offences per offender remained stable across all offence groups compared to the previous 12 month period, with a total of 1.4 offences per offender in the 12 months ending June 2011. The offence groups with the highest number of offences per offender were:

- 3.2 offences per offender for *sexual offences*;
- 2.5 offences per offender for *fraud & forgery*, and;
- 2.4 offences per offender for other *indictable offences*.

Indictable motoring offences have shown the largest fall across the eleven year period, falling from 3.3 offences per offender in the 12 months ending June 2001 to just 1.3 offences in the 12 months ending June 2011.

Offences Brought to Justice

One measure of justice outcomes is Offences Brought to Justice (OBTJ). An offence is said to have been brought to justice when a 'notifiable offence'¹⁸ results in an offender being convicted, cautioned, issued with a penalty notice for disorder (PND) or a cannabis warning, or having an offence taken into consideration at court. The number of OBTJ is in part affected by the number of recorded crimes in an area. If recorded crime in an area falls there will be fewer offences which can potentially be brought to justice.

In the 12 months ending June 2011 there were 1.23 million offences brought to justice, a decrease of 4.4 per cent compared to the previous 12 month period. Recorded crime totals for the same period fell by 4.0 per cent.

Of the total Offences Brought to Justice in the 12 months ending June 2011:

- Cautions and convictions made up the majority of OBTJ types, convictions accounted for nearly two-thirds of all OBTJ (61.0 per cent, 751,000) and cautions made up nearly a fifth (19.8 per cent , 243,000);
- Since their introduction in April 2004 formal warnings for cannabis possession peaked in the 12 months ending June 2008 with 103,000 warnings administered. Since this period the total has fallen consistently to current levels of 79,000 in the 12 months ending June 2011, around 23.3 per cent down on the 2008 peak.
- Offences taken into consideration fell by 6.8 per cent on the previous 12 months, to an eleven year low of 73,000.
- *Drug* offences brought to justice have more than doubled from 114,000 in the 12 months ending June 2001 to 235,000. This represents a proportional increase of 7.5 per cent of the overall total *drug offences* brought to justice.
- *Violence against the person* now accounts for 6.9 per cent more of the total OBTJ than in the 12 months ending June 2001 (28.4 per cent compared to 21.5 per

¹⁸ Notifiable offences are those crimes which are recorded by the police and notified to the Home Office as part of their regular statistical returns.

cent). This is a 64 per cent increase in absolute terms (213,000 in 2001 to 350,000 in the 12 months ending June 2011).

- The majority of OBTJs were given for:
 - *Violence against the person* – 28.4 per cent;
 - *Theft and Handling of stolen goods* – 25.2 per cent, and;
 - *Drug offences* – 19.4 per cent.

- Compared to the 12 months ending June 2010 the number of OBTJs for each offence group has remained stable, with annual differences of less than one percentage point. The largest difference was a 0.8 percentage point increase for drug offences.

Table Q6.1 - Cautions administered by offence group, 12 months ending June 2001 to 12 months ending June 2011 ⁽¹⁾⁽²⁾⁽³⁾⁽⁴⁾⁽⁵⁾

England and Wales	Number of offences (thousands)											
	12 months ending											
	Jun 01	Jun 02	Jun 03	Jun 04	Jun 05	Jun 06	Jun 07	Jun 08	Jun 09	Jun 10	Jun 11	
Violence against the person	20.4	21.3	28.0	34.4	44.2	58.9	57.7	48.0	32.6	24.9	21.1	
Sexual offences	1.3	1.3	1.4	1.7	1.7	2.1	2.2	2.0	1.7	1.5	1.5	
Burglary	7.0	6.6	6.0	6.0	6.6	7.7	8.2	6.7	5.4	4.1	3.9	
Robbery	0.5	0.5	0.5	0.4	0.5	0.7	0.6	0.6	0.3	0.2	0.3	
Theft and handling stolen goods	74.6	67.0	59.1	66.4	73.5	80.0	84.4	76.6	73.2	59.4	50.6	
Fraud and forgery	7.1	6.6	6.7	6.7	7.6	9.1	9.4	9.5	8.6	7.3	6.3	
Criminal damage	3.6	3.9	3.7	5.0	6.5	9.3	9.9	9.3	7.7	6.1	5.3	
Drug offences	40.1	43.1	47.3	42.3	34.3	38.5	41.9	48.3	48.9	43.8	44.7	
Other indictable offences	4.5	4.6	5.0	6.0	6.6	8.7	10.3	10.1	8.8	7.7	7.3	
Summary non-motoring offences	92.3	90.9	90.7	107.5	114.2	143.6	172.6	170.4	153.0	132.6	118.1	
All offences ⁽⁶⁾	251.4	245.9	248.3	276.5	295.8	358.7	397.2	381.4	340.1	287.7	259.2	

(1) Excluding all motoring offences.

(2) Includes reprimands and final warnings for juveniles.

(3) On an all offence basis.

(4) All cautions data from April 2011 have been sourced from the Police National Computer.

(5) From December 2010 cautions data for Dyfed Powys have been sourced from the Police National Computer.

(6) May not sum due to rounding.

Table Q6.2 - Convictions by offence group, 12 months ending June 2001 to 12 months ending June 2011⁽¹⁾⁽²⁾

England and Wales	Number of offences (thousands)											
	12 months ending											
	Jun 01	Jun 02	Jun 03	Jun 04	Jun 05	Jun 06	Jun 07	Jun 08	Jun 09	Jun 10	Jun 11	
Violence against the person	46.0	48.3	51.9	52.5	53.0	55.7	55.3	54.5	55.6	57.9	59.5	
Sexual offences	11.1	12.6	12.4	13.1	14.4	14.2	15.4	15.8	16.3	17.3	19.4	
Burglary	34.6	36.0	36.4	35.3	31.8	30.8	32.0	31.8	31.9	30.7	31.6	
Robbery	9.3	11.0	12.1	11.5	11.1	11.4	12.8	12.9	13.0	12.2	12.5	
Theft and handling stolen goods	192.4	196.1	192.5	182.7	165.3	160.7	157.8	166.5	177.5	174.3	176.9	
Fraud and forgery	45.5	44.9	43.5	44.8	43.7	44.1	39.5	44.3	49.4	52.3	51.2	
Criminal damage	16.6	17.5	18.1	19.0	19.3	20.6	21.2	17.4	13.2	12.1	11.2	
Drug offences	72.5	76.8	84.0	78.8	67.2	70.9	70.2	81.5	88.2	94.6	96.5	
Other indictable offences	111.4	121.6	135.2	146.9	135.5	127.9	120.4	118.8	117.7	122.6	119.5	
Indictable motoring offences	13.3	13.1	13.9	14.1	11.0	9.7	8.3	7.9	5.7	4.5	4.1	
Summary non-motoring offences	575.1	548.6	582.6	649.6	627.7	615.8	602.6	611.3	621.7	623.5	602.0	
Summary motoring offences	1,116.7	1,134.4	1,201.6	1,351.3	1,268.1	1,142.1	1,000.4	886.3	790.9	765.9	675.5	
All offences⁽³⁾	2,244.5	2,260.8	2,384.2	2,599.5	2,448.2	2,303.9	2,135.9	2,048.9	1,981.1	1,967.9	1,859.8	

(1) On an all offence basis.

(2) Excludes convictions data for Cardiff magistrates' court for April, July, and August 2008.

(3) May not sum due to rounding.

Table Q6.3 - Number of offences brought to justice (notifiable) by outcome and numbers of recorded crimes, 12 months ending June 2001 to 12 months ending June 2011 ⁽¹⁾

England and Wales	Number of offences (thousands)						
	12 months ending	Offences taken into consideration ⁽²⁾	Penalty notices for disorder ⁽³⁾	Formal warnings for cannabis possession ⁽⁴⁾	Cautions ⁽⁵⁾⁽⁶⁾	Convictions	Recorded crimes ⁽⁷⁾
Jun 01	85.3	*	*	*	228.5	675.7	989.5
Jun 02	93.8	*	*	*	225.1	691.1	1,010.0
Jun 03	98.4	2.4	*	*	226.6	716.9	1,044.3
Jun 04	99.5	7.9	5.0	5.0	254.1	722.6	1,089.2
Jun 05	111.0	68.2	32.8	32.8	281.8	692.2	1,185.9
Jun 06	118.0	121.5	69.7	69.7	344.6	698.7	1,352.6
Jun 07	118.3	150.4	85.9	85.9	384.1	703.6	1,442.2
Jun 08	104.8	129.4	103.0	103.0	367.3	729.4	1,433.9
Jun 09	95.7	116.2	99.2	99.2	326.2	746.0	1,383.2
Jun 10	78.2	100.3	83.7	83.7	270.9	754.7	1,287.8
Jun 11	72.9	85.1	79.1	79.1	243.4	751.2	1,231.7
							4,039.0

(1) Excludes British Transport Police.

(2) Offences taken into consideration by the court and previously recorded by the police. Figures for April 2004 onwards include offences not previously recorded.

(3) Piloted in 2002 and introduced nationally in 2004.

(4) Introduced in April 2004.

(5) All cautions data from April 2011 have been sourced from the Police National Computer.

(6) From December 2010 cautions data for Dyfed Powys have been sourced from the Police National Computer.

(7) The introduction of the National Crime Recording Standards (NCRS) in April 2002 resulted in significant increases in the number of crimes recorded.

(8) Excludes convictions data for Cardiff magistrates' court for April, July, and August 2008.

Note - figures for cannabis warnings & offences taken into consideration appearing in this publication are provisional and may be revised following Home Office validation. Finalised National Statistics for the financial year 2011/12 are expected to be published during 2012 by the Home Office.

Table Q6.4 - Number of offences brought to justice (notifiable) by offence group, 12 months ending June 2001 to 12 months ending June 2011 ⁽¹⁾⁽²⁾⁽³⁾⁽⁴⁾⁽⁵⁾

Offence group	Number of offences (thousands)											
	12 months ending											
	Jun 01	Jun 02	Jun 03	Jun 04	Jun 05	Jun 06	Jun 07	Jun 08	Jun 09	Jun 10	Jun 11	
Violence against the person	213.1	218.8	242.1	279.3	352.9	426.6	469.5	449.5	402.8	374.9	350.2	
Sexual offences	13.6	15.6	15.1	16.0	16.0	16.6	16.8	17.0	17.0	17.7	19.0	
Burglary	71.6	77.6	81.2	76.4	71.4	75.6	77.4	72.2	69.4	63.9	62.5	
Robbery	11.1	13.0	13.7	13.2	12.8	13.4	14.9	14.6	14.0	13.0	13.5	
Theft and handling stolen goods	350.6	347.6	335.5	345.6	334.8	358.4	374.5	363.6	364.6	327.4	310.9	
Fraud and forgery	81.5	78.4	75.3	74.2	75.7	71.2	61.1	63.4	66.1	64.2	61.1	
Criminal damage	93.2	94.4	96.8	110.5	125.1	148.2	164.4	151.2	131.5	111.4	99.7	
Drug offences	114.1	121.6	132.7	116.4	135.5	180.1	199.0	234.0	241.2	234.8	234.7	
Other offences	40.6	43.0	52.0	57.6	61.7	62.5	64.5	68.4	76.6	80.5	80.0	
All offences⁽⁶⁾	989.5	1,010.0	1,044.3	1,089.2	1,185.9	1,352.6	1,442.2	1,433.9	1,383.2	1,287.8	1,231.7	

(1) Excludes British Transport Police.

(2) Includes estimates for incomplete data.

(3) Excludes convictions data for Cardiff magistrates' court for April, July, and August 2008.

(4) All cautions data from April 2011 have been sourced from the Police National Computer.

(5) From December 2010 cautions data for Dyfed Powys have been sourced from the Police National Computer.

(6) May not sum due to rounding.

Offending Histories [Tables Q7.1 – Q7.5, Q7a - Q7I]

Information presented in this section differs from previous sections on convictions, cautions and sentencing, in that all information in this chapter is taken from the Police National Computer (PNC). The main difference is that the PNC does not include a range of less serious summary offences (such as TV licence evasion and a range of motoring offences) and so the figures reported are not comparable or match figures reported in the previous chapters.

This section provides an overview of the changing structure of the known offending population with information on the breakdown of offences committed by new offenders and repeat offenders, the trends in new entrants to the criminal justice system, and breakdowns of the criminal histories of cautioned and sentenced offenders.

Key points in the 12 months ending June 2011:

- 25.4 per cent of proven offences were committed by offenders with no previous criminal offences, this compares to 27.2 per cent in the 12 months ending June 2010 and reflects a fall in the use of cautions
- There were 219,500 First Time Entrants (people who received their first conviction, caution, reprimand or warning). This is a fall of 10.3 per cent from the 244,700 first time entrants in the 12 months ending June 2010. This fall was driven by a reduction of 24.5 per cent in the number of Juvenile First Time Entrants. Adult first time entrants fell by 6.0 per cent.
- The differing trends in adult and juvenile first time entrants are largely due to the different disposals received. 52 per cent of adult first time entrants received an out of court disposal whereas 83 per cent of juvenile first time entrants received an out of court disposal. Thus the trends in out of court disposals will affect Juvenile First Time entrants more than adults. See Pages 4 and 5 for details on trends in Out of Court Disposals.
- The rate of Juvenile First Time Entrants per 100,000 of population now stands at 828, a fall of 23.3 per cent from the 12 months ending June 2010.
- 10.3 per cent of offenders convicted of indictable offences had no previous criminal offences, whilst 30.1 per cent had 15 or more previous offences, these compare to 10.6 per cent and 28.3 per cent respectively in the 12 months ending June 2010.

First offences and further offences [Tables Q7.1, Q7a and Q7b]

An offence is defined as a first offence if it results in the offender receiving their first reprimand, warning, caution or conviction – i.e. they have no previous criminal history recorded on the PNC. Offences resulting in further reprimands, warnings, cautions or convictions are known as further offences since the offender already has a recorded criminal history.

In the 12 months ending June 2011, a total of 863,100¹⁹ first offences and further offences were recorded, a decrease of 4.1 per cent compared with 900,100 recorded in the 12 months ending June 2010. Of these recorded offences:

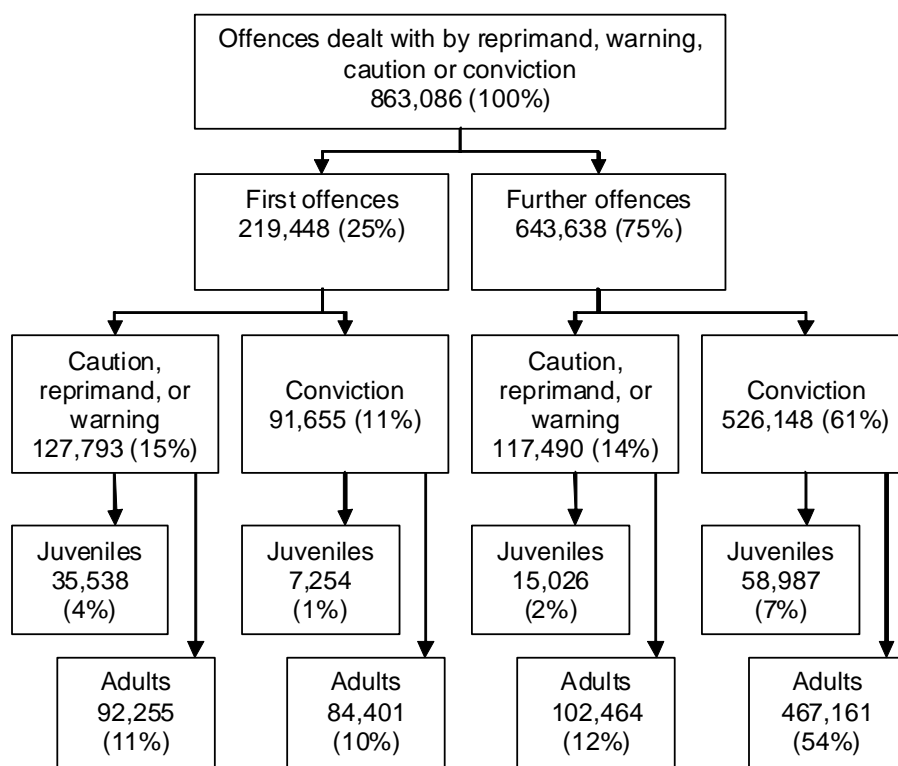
- First offences accounted for 25.4 per cent (219,400), a fall of two percentage points compared with the 12 months ending June 2010;
- Further offences accounted for 74.6 per cent (643,600), a rise of around two percentage points compared with the 12 months ending June 2010.

Figure 7.1 shows the breakdown of all proven offences recorded in the 12 months ending June 2011. The percentages in the diagram relate to the total number of offences committed in the top box of the figure.

- 19.5 per cent of first offences (42,800 out of 219,400 first offences) are committed by juveniles, compared to 11.5 per cent of further offences (74,000 out of 643,600 further offences);
- Juveniles received 52.1 per cent of cautions, reprimands and warnings compared to 14.8 per cent of convictions.

¹⁹ When an offender has been cautioned or convicted of several offences on the same occasion only one offence has been counted; the figures therefore represent counts of separate cautioning or sentencing occasions as recorded on the PNC rather than counts of every proven offence. This means that the first offence figures described here are equal to the figures for first time entrants described below

Figure 7.1: First offences and further offences in the 12 months ending June 2011



Figures 7.2 and 7.3 show the trends over time in first and further offending. Figure 7.2 shows the peak for juveniles in 2007 and the subsequent large falls in offending which are associated with the removal of a target in April 2008 to increase offences brought to justice and a move towards bringing more serious crimes to justice. Figure 7.3 shows a different pattern for adults, with first time entrants falling back after the peak in 2007, but further offending continuing to rise.

Figure 7.2: Number of juvenile first and further offences in England and Wales between the 12 months ending June 2001 and the 12 months ending June 2011

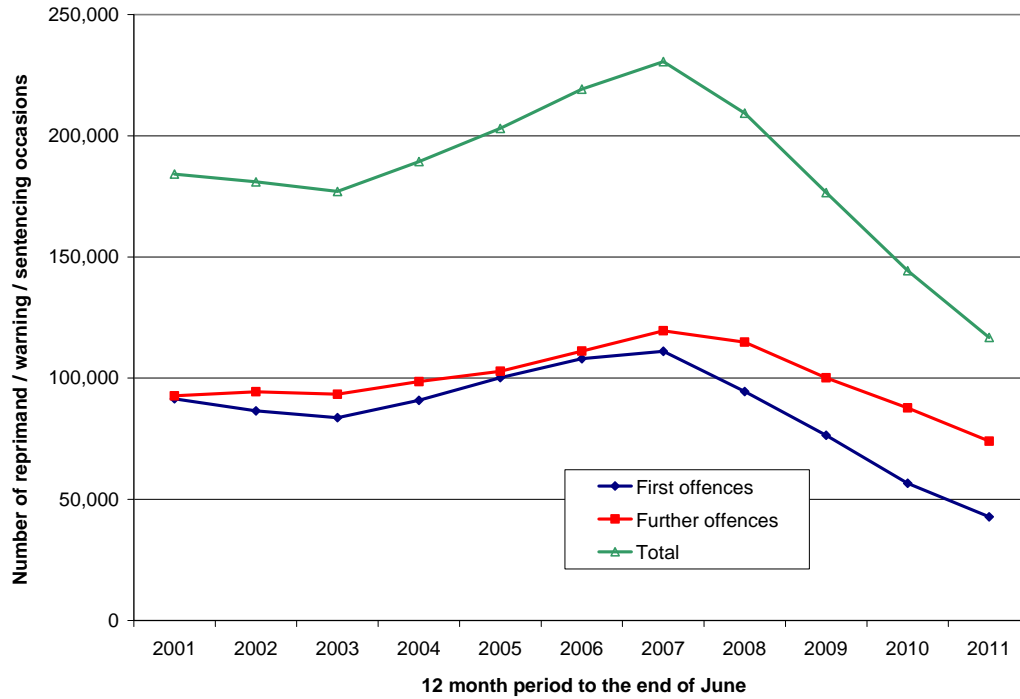
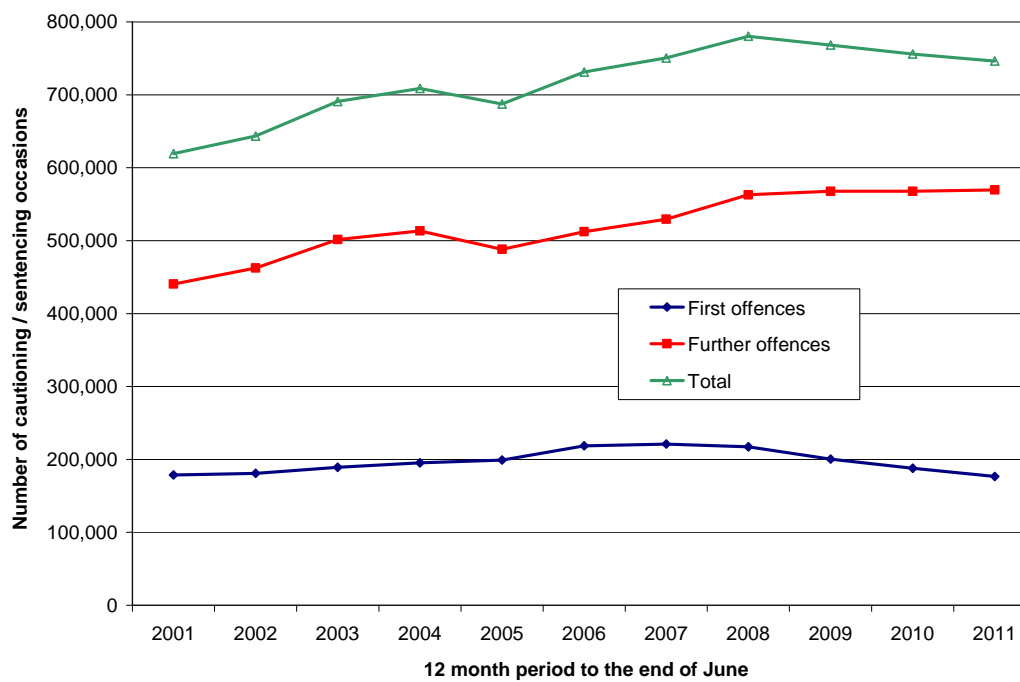


Figure 7.3: Number of adult first and further offences in England and Wales between the 12 months ending June 2001 and the 12 months ending June 2011



First time entrants to Criminal Justice system [Tables Q7.2, Q7.3, Q7c to Q7j]

First time entrants to the criminal justice are classified as offenders, resident in England and Wales, who received their first reprimand, warning, caution or conviction, based on data recorded by the police on the PNC.

In the 12 months ending June 2011, there were 219,400 first time entrants (FTE) to the criminal justice system, a decrease of 10.3 per cent compared to the 12 months period ending June 2010, and 33.9 per cent when compared with the 12 months period ending June 2007.

- Juveniles first time entrants accounted for 19.5 per cent (42,800) of all first time entrants, a fall of four percentage points compared with 12 months ending June 2010, and 14 percentage points when compared with the 12 months ending June 2007.
 - The rate per 100,000 of population has fallen 23.2 per cent from 1,079 to 828 over the last 12 months
- Adult first time entrants to the criminal justice system in the 12 months ending June 2011 accounted for 80.5 per cent of all the new entrants, an increase of four percentage points compared to the 12 months ending June 2010. Of these:
 - The rate per 100,000 of population has fallen 6.9 per cent from 436 to 405 over the last 12 months
- The decline in the use of reprimands, warnings and cautions in dealing with FTEs is consistent with the reduction in the use of these disposals for all offenders and coincides with the increasing focus on more serious offending.

Criminal Histories [Tables Q7.4, Q7.5, Q7k, Q7l]

An offender is counted as having a criminal history if their PNC record shows that, at the time of receiving a reprimand, warning, caution or conviction, they had previously committed one or more offences that had resulted in one of these sanctions. The PNC data excludes a range of summary offences, and therefore unlike the other sections of offending histories, the criminal histories section focuses on the criminal histories of offenders cautioned or sentenced for indictable offences only.

Offenders cautioned²⁰ for indictable offences on the PNC [Table Q7.4 and Q7.5]

In the 12 months ending June 2011, a total of 131,900 offenders received reprimands, warnings or cautions for indictable offences, a decrease of 9.4 per cent compared with the 12 months ending June 2010. Of these:

- 47.7 per cent (62,900) have at least one previous conviction/caution recorded compared to 44.8 per cent in 2010.

²⁰ Includes Juveniles receiving reprimands or warnings

- 3.5 per cent (4,600) of offenders who received warnings/reprimands or cautions for indictable offences had 15 or more previous convictions/cautions an increase of around half a percentage point compared with the 12 months ending June 2010, and over two percentage points compared to 12 months ending June 2001.

In the 12 months ending June 2011, a total of 333,200 offenders were sentenced for indictable offences, an increase of 2.0 per cent compared with the 12 months ending June 2010. Of these:

- 30.1 per cent of all offenders sentenced for indictable offences had 15 or more previous convictions or cautions recorded against them, an increase of two percentage points against the 12 months ending 2010 and 13 percentage points compared with the 12 months ending June 2001;
- 10.3 per cent of all offenders sentenced for indictable offences had no previous convictions or cautions recorded against them, a fall of less than half a percentage point compared to the 12 months ending June 2010, and two percentage points lower than in the 12 months ending June 2001.

Criminal history by sentence type

The criminal history of offenders receiving different sentences varies by type of sentence, with custodial sentences associated with higher levels of previous offences. In the 12 months ending June 2011:

- 44.7 per cent of adult offenders receiving immediate custodial sentences had 15 or more previous convictions/cautions.
- 28.8 per cent of adult offenders receiving a community sentence had 15 or more previous convictions/cautions.

Table Q7.1 First offences and further offences committed by offenders of all ages⁽¹⁾ and resulting in a reprimand, warning, caution or conviction, England and Wales, 12 months ending June 2001 to 12 months ending June 2011

Number of offences and percentages									
	Males and females ⁽²⁾			Males			Females		
	First offences	Further offences	Total	First offences	Further offences	Total	First offences	Further offences	Total
12 month period to the end of June	Number of offences								
2001	270,424	533,183	803,607	199,357	462,634	661,991	69,753	70,508	140,261
2002	267,357	556,943	824,300	196,578	482,758	679,336	69,348	74,119	143,467
2003	272,968	594,898	867,866	201,254	514,278	715,532	70,399	80,510	150,909
2004	286,127	611,870	897,997	207,822	526,726	734,548	76,510	84,996	161,506
2005	299,432	590,922	890,354	213,943	507,344	721,287	83,410	83,412	166,822
2006	326,782	623,561	950,343	232,670	535,899	768,569	92,190	87,397	179,587
2007	332,005	649,023	981,028	235,323	556,315	791,638	94,597	92,400	186,997
2008	311,779	677,709	989,488	221,323	579,934	801,257	88,444	97,346	185,790
2009	276,839	667,747	944,586	195,449	571,345	766,794	79,274	95,941	175,215
2010	244,666	655,479	900,145	173,658	561,837	735,495	68,661	93,118	161,779
2011	219,448	643,638	863,086	156,855	552,257	709,112	59,832	90,732	150,564
12 month period to the end of June	Percentage of Total								
2001	33.7	66.3	100.0	30.1	69.9	100.0	49.7	50.3	100.0
2002	32.4	67.6	100.0	28.9	71.1	100.0	48.3	51.7	100.0
2003	31.5	68.5	100.0	28.1	71.9	100.0	46.6	53.4	100.0
2004	31.9	68.1	100.0	28.3	71.7	100.0	47.4	52.6	100.0
2005	33.6	66.4	100.0	29.7	70.3	100.0	50.0	50.0	100.0
2006	34.4	65.6	100.0	30.3	69.7	100.0	51.3	48.7	100.0
2007	33.8	66.2	100.0	29.7	70.3	100.0	50.6	49.4	100.0
2008	31.5	68.5	100.0	27.6	72.4	100.0	47.6	52.4	100.0
2009	29.3	70.7	100.0	25.5	74.5	100.0	45.2	54.8	100.0
2010	27.2	72.8	100.0	23.6	76.4	100.0	42.4	57.6	100.0
2011	25.4	74.6	100.0	22.1	77.9	100.0	39.7	60.3	100.0

(1) Primary offences, as recorded on the Police National Computer, classified according to whether or not the offender had any previous reprimands, warnings, cautions or convictions.

(2) Including offenders whose gender is not recorded on the PNC.

Table Q7.2 Number of first time entrants to the criminal justice system⁽¹⁾ in England and Wales, 12 months ending June 2001 to 12 months ending June 2011 by gender and age group

12 month period to the end of June	Numbers of offenders								
	Males and females ⁽²⁾			Males			Females		
	Juveniles	Adults	All ages	Juveniles	Adults	All ages	Juveniles	Adults	All ages
2001	91,518	178,906	270,424	66,250	133,107	199,357	25,208	44,545	69,753
2002	86,511	180,846	267,357	62,411	134,167	196,578	24,013	45,335	69,348
2003	83,647	189,321	272,968	60,628	140,626	201,254	22,915	47,484	70,399
2004	90,811	195,316	286,127	64,156	143,666	207,822	26,530	49,980	76,510
2005	100,212	199,220	299,432	69,289	144,654	213,943	30,768	52,642	83,410
2006	108,014	218,768	326,782	74,157	158,513	232,670	33,594	58,596	92,190
2007	111,059	220,946	332,005	75,647	159,676	235,323	35,018	59,579	94,597
2008	94,504	217,275	311,779	64,289	157,034	221,323	29,849	58,595	88,444
2009	76,462	200,377	276,839	51,298	144,151	195,449	24,850	54,424	79,274
2010	56,653	188,013	244,666	38,790	134,868	173,658	17,581	51,080	68,661
2011	42,792	176,656	219,448	30,936	125,919	156,855	11,619	48,213	59,832

(1) Offenders recorded on the Police National Computer (PNC) by an English or Welsh police force or by the British Transport Police operating in England and Wales as having received their first conviction, caution, reprimand or warning. Offences resulting in Penalty Notices for Disorder are not counted as first offences.

(2) Including offenders whose gender is not recorded on the PNC.

Table Q7.3 First time entrants to the criminal justice system⁽¹⁾ in England and Wales, 12 months ending June 2001 to 12 months ending June 2011, as a rate per 100,000 of the population⁽²⁾, by gender and age group

12 month period to the end of June	Rates per 100,000 of the population								
	Males and females ⁽³⁾			Males			Females		
	Juveniles	Adults	All ages	Juveniles	Adults	All ages	Juveniles	Adults	All ages
2001	1,718	444	593	2,428	687	902	970	213	297
2002	1,599	446	582	2,249	687	882	911	216	293
2003	1,527	464	590	2,156	715	895	860	225	296
2004	1,652	476	615	2,272	725	918	992	235	320
2005	1,823	482	639	2,453	724	938	1,151	246	347
2006	1,973	524	692	2,636	785	1,011	1,262	272	381
2007	2,047	525	699	2,712	783	1,015	1,328	275	389
2008	1,753	512	652	2,321	762	947	1,138	268	361
2009	1,435	468	575	1,877	692	830	957	247	322
2010	1,079	436	505	1,441	642	732	687	231	278
2011	828	405	450	1,168	593	656	462	216	241

(1) Offenders recorded on the Police National Computer (PNC) by an English or Welsh police force as having received their first conviction, caution, reprimand or warning. Offences resulting in Penalty Notices for Disorder are not counted as first offences.

(2) Based on mid-year population estimates for each age group supplied by the Office for National Statistics.

(3) Including offenders whose gender is not recorded on the PNC.

Table Q7.4 Proportion of offenders sentenced for indictable offences by previous criminal history and sentence received in 12 months ending June 2011

	England and Wales						Number and Percentage
	Number of previous convictions/cautions						All offenders (100%)
	0	1-2	3-6	7-10	11-14	15+	
	Juveniles						
Caution	70.8	28.0	1.0	0.1	0.1	0.0	30,107
Absolute discharge	8.9	39.5	34.9	7.5	4.0	5.2	901
Conditional discharge	2.4	17.8	48.1	17.4	8.2	6.2	3,251
Fine	1.1	18.4	50.3	17.4	7.5	5.3	1,579
Community sentence	15.9	37.9	32.2	8.3	3.2	2.4	26,963
Immediate custody	7.3	12.5	29.1	21.8	14.2	15.2	4,431
Other ⁽¹⁾	9.7	22.1	34.3	17.6	8.8	7.5	1,904
All court convictions ⁽²⁾	12.7	31.8	34.1	11.4	5.3	4.6	39,069
All disposals ⁽²⁾	38.0	30.1	19.7	6.5	3.0	2.6	69,176
	Adults						
Caution	46.9	25.9	14.7	5.3	2.7	4.5	101,774
Absolute discharge	10.6	11.2	14.9	10.3	8.7	44.3	813
Conditional discharge	9.7	19.4	19.6	11.9	8.8	30.6	35,536
Fine	6.3	16.4	24.3	14.6	10.2	28.2	56,846
Community sentence	10.8	16.3	21.6	13.3	9.2	28.8	71,697
Fully Suspended	16.0	17.8	20.9	12.2	8.3	24.8	32,338
Immediate custody	9.8	9.4	13.8	11.8	10.5	44.7	80,581
Other ⁽¹⁾	8.3	12.1	16.8	12.4	9.7	40.7	16,330
All court convictions	10.0	14.7	19.4	12.8	9.7	33.5	294,141
All disposals	19.4	17.6	18.2	10.9	7.9	26.0	395,915

(1) The 'Other' category includes some deferred sentences that the police will update on the PNC at a later date when the final decision is known.

(2) For juveniles the all disposals figures include fully suspended sentences.

Table Q7.5 Offenders sentenced for indictable offences by previous criminal history and sentence received, 12 month ending June 2001 to 12 months ending June 2011

England & Wales		Number and percentage of offenders									
Disposal and number of previous convictions or cautions		12 Month period to the end of June									
		2001	2002	2003	2004	2005	2006	2007	2008	2009	2010
All ages											
Absolute discharge											
First time offenders	9.0	11.5	11.9	11.4	11.2	10.1	8.9	9.8	8.7	9.5	9.7
1-2 previous convictions/cautions	19.1	21.8	32.7	31.0	30.6	29.0	30.2	27.8	29.2	30.3	26.1
3-6 previous convictions/cautions	25.4	24.5	21.3	24.7	24.5	24.8	26.1	24.9	27.9	25.8	25.4
7-10 previous convictions/cautions	15.6	14.4	9.9	10.0	10.2	9.6	9.2	9.8	7.6	8.3	8.9
11-14 previous convictions/cautions	9.5	10.3	7.9	6.8	5.7	5.8	6.6	6.7	6.4	6.0	6.2
15 or more previous convictions/cautions	21.3	17.5	16.3	16.2	17.8	20.8	19.0	21.0	20.2	20.1	23.7
All offenders (100%)	1,595	2,044	2,952	2,752	2,244	2,154	2,035	2,111	1,694	1,689	1,714
Conditional discharge											
First time offenders	15.5	13.8	12.2	11.5	12.2	11.8	11.0	9.9	9.2	9.7	9.1
1-2 previous convictions/cautions	27.7	25.6	22.0	21.2	20.5	20.4	19.9	19.5	19.5	20.1	19.3
3-6 previous convictions/cautions	23.9	23.8	24.1	24.1	23.0	23.0	23.5	23.1	22.5	22.7	22.0
7-10 previous convictions/cautions	12.2	13.1	13.8	13.4	13.3	12.8	12.6	12.8	12.6	12.1	12.4
11-14 previous convictions/cautions	7.3	8.2	9.1	9.3	9.0	9.1	9.0	9.2	9.1	8.7	8.7
15 or more previous convictions/cautions	13.5	15.5	18.8	20.5	21.9	22.9	23.9	25.5	27.2	26.6	28.5
All offenders (100%)	49,256	48,511	48,962	47,599	42,170	39,739	36,384	36,907	34,892	36,047	38,787
Fine											
First time offenders	10.0	9.3	8.5	8.8	9.4	9.1	8.4	7.3	6.6	6.3	6.1
1-2 previous convictions/cautions	22.9	21.5	19.2	18.4	18.0	18.3	18.2	17.1	16.9	16.9	16.4
3-6 previous convictions/cautions	28.2	27.9	27.5	26.9	26.2	26.1	26.3	26.0	25.4	25.6	25.0
7-10 previous convictions/cautions	14.4	15.0	15.4	15.2	14.7	14.7	14.5	15.0	15.0	14.9	14.7
11-14 previous convictions/cautions	8.7	9.3	9.8	9.9	9.8	9.7	9.6	10.0	10.0	10.1	10.2
15 or more previous convictions/cautions	15.9	17.0	19.6	20.8	21.9	22.3	23.1	24.6	26.0	26.2	27.6
All offenders (100%)	74,589	74,609	78,067	72,913	60,258	54,205	48,672	50,149	56,274	56,157	58,425
Community sentence											
First time offenders	14.1	13.8	13.9	14.1	14.3	13.8	12.5	11.5	11.5	12.2	12.2
1-2 previous convictions/cautions	23.7	24.5	25.2	25.1	25.4	27.0	27.4	26.3	24.4	23.9	22.2
3-6 previous convictions/cautions	29.3	28.2	26.4	25.7	25.3	26.3	27.1	26.7	25.5	25.3	24.5
7-10 previous convictions/cautions	13.7	13.7	13.2	12.6	12.1	11.6	11.8	12.0	11.8	11.5	11.9
11-14 previous convictions/cautions	7.5	7.8	7.8	7.8	7.6	7.0	6.7	7.2	7.4	7.4	7.6
15 or more previous convictions/cautions	11.7	12.0	13.5	14.7	15.4	14.5	14.5	16.4	19.3	19.8	21.6
All offenders (100%)	98,734	102,111	108,429	106,532	106,510	102,747	98,231	99,512	101,500	96,433	98,660
Fully suspended											
First time offenders	33.0	32.5	28.5	27.7	23.0	14.2	14.3	14.6	15.0	15.8	16.0
1-2 previous convictions/cautions	18.9	18.2	16.9	15.7	14.8	14.4	15.7	16.7	17.3	17.6	17.8
3-6 previous convictions/cautions	18.2	18.1	18.2	19.5	19.1	20.3	21.2	20.9	20.2	20.9	20.9
7-10 previous convictions/cautions	10.9	11.0	11.5	11.6	12.5	13.7	13.7	13.3	12.9	12.2	12.2
11-14 previous convictions/cautions	7.0	7.2	8.5	7.9	8.7	10.3	9.7	9.2	8.9	8.9	8.3
15 or more previous convictions/cautions	11.9	13.1	16.3	17.6	22.0	27.1	25.4	25.4	25.8	24.6	24.7
All offenders (100%)	2,171	2,062	2,120	2,171	3,001	15,115	27,047	30,520	30,917	31,969	32,378
Immediate custody											
First time offenders	9.4	9.5	9.0	9.1	9.7	10.2	10.2	10.8	10.0	10.3	9.6
1-2 previous convictions/cautions	10.2	9.4	8.8	8.5	9.0	9.1	9.2	9.2	9.5	10.0	9.5
3-6 previous convictions/cautions	20.2	18.6	17.1	16.4	16.0	16.1	16.1	15.5	15.2	15.6	14.6
7-10 previous convictions/cautions	18.5	18.2	17.1	16.0	15.2	14.4	14.3	13.9	13.3	12.9	12.3
11-14 previous convictions/cautions	13.9	14.4	14.8	14.1	13.3	12.8	12.3	11.9	11.6	11.0	10.7
15 or more previous convictions/cautions	27.8	30.0	33.2	36.0	36.7	37.4	37.9	38.7	40.3	40.2	43.1
All offenders (100%)	78,125	84,014	86,436	90,295	86,270	85,193	83,005	89,982	91,126	87,344	85,012
Other⁽¹⁾											
First time offenders	10.5	9.3	7.9	7.5	7.5	8.0	8.6	9.4	10.5	10.1	8.4
1-2 previous convictions/cautions	18.0	16.1	13.9	13.7	13.5	14.0	14.0	13.0	14.0	15.5	13.2
3-6 previous convictions/cautions	24.4	24.3	24.0	23.3	22.1	22.4	22.4	20.9	20.0	19.4	18.6
7-10 previous convictions/cautions	16.0	16.6	16.4	15.4	15.0	14.8	14.7	14.1	13.0	12.8	12.9
11-14 previous convictions/cautions	11.0	11.8	12.5	12.0	11.5	11.3	10.5	10.3	10.2	9.4	9.6
15 or more previous convictions/cautions	20.1	21.9	25.3	28.1	30.5	29.4	29.8	32.3	32.2	32.8	37.3
All offenders (100%)	12,864	13,912	14,160	13,462	12,531	12,172	12,097	12,847	13,535	17,077	18,234
All disposals											
First time offenders	12.1	11.6	11.0	11.0	11.6	11.5	11.1	10.7	10.3	10.6	10.3
1-2 previous convictions/cautions	20.5	19.7	18.8	18.2	18.2	18.6	18.6	17.9	17.4	17.5	16.7
3-6 previous convictions/cautions	25.6	24.8	23.8	23.1	22.4	22.6	22.9	22.3	21.6	21.7	21.1
7-10 previous convictions/cautions	14.9	15.2	14.9	14.3	13.7	13.3	13.3	13.3	13.0	12.6	12.6
11-14 previous convictions/cautions	9.4	10.1	10.4	10.3	9.9	9.6	9.3	9.5	9.4	9.2	9.1
15 or more previous convictions/cautions	17.3	18.7	21.2	23.2	24.1	24.4	24.9	26.5	28.2	28.3	30.1
All offenders (100%)	317,334	327,263	341,126	335,724	312,984	311,325	307,471	322,028	329,938	326,716	333,210

Juvenile offenders

Absolute discharge

First time offenders	7.3	14.3	16.1	13.8	11.7	10.5	9.0	10.5	7.2	7.9	8.9
1-2 previous convictions/cautions	31.4	39.0	55.1	49.8	46.4	45.1	45.0	42.9	44.5	42.4	39.5
3-6 previous convictions/cautions	38.4	30.2	21.6	28.1	31.7	32.6	32.4	34.2	36.2	35.5	34.9
7-10 previous convictions/cautions	14.3	10.9	4.2	4.8	6.1	6.2	7.7	6.8	5.2	7.5	7.5
11-14 previous convictions/cautions	5.0	3.4	1.6	2.4	2.3	2.8	3.8	3.7	3.2	3.8	4.0
15 or more previous convictions/cautions	3.5	2.2	1.4	1.1	1.7	2.8	2.1	1.8	3.8	3.0	5.2
All juvenile offenders (100%)	398	623	1,378	1,404	1,202	1,112	1,121	1,098	947	953	901

Conditional discharge

First time offenders	18.6	16.7	5.9	5.3	5.3	5.4	4.5	3.9	2.9	3.1	2.4
1-2 previous convictions/cautions	45.2	40.8	26.6	26.0	24.5	24.5	24.4	21.8	21.1	20.1	17.8
3-6 previous convictions/cautions	26.4	29.4	44.1	46.1	47.2	46.0	46.8	47.9	47.5	48.2	48.1
7-10 previous convictions/cautions	7.2	8.8	14.5	14.1	15.2	15.5	14.8	16.4	16.6	16.0	17.4
11-14 previous convictions/cautions	1.7	3.0	5.9	5.5	5.1	5.9	6.3	6.9	7.3	7.4	8.2
15 or more previous convictions/cautions	0.9	1.3	3.1	3.1	2.6	2.7	3.2	3.2	4.6	5.3	6.2
All juvenile offenders (100%)	8,711	6,464	3,671	3,893	3,728	3,744	3,689	3,450	3,324	3,159	3,251

Fine

First time offenders	6.9	5.4	2.1	2.2	2.4	2.3	2.0	1.8	2.1	1.0	1.1
1-2 previous convictions/cautions	41.9	39.2	23.5	24.6	24.2	24.6	23.6	21.0	18.5	19.5	18.4
3-6 previous convictions/cautions	38.6	40.7	52.8	51.3	50.0	50.1	49.0	51.7	50.9	48.3	50.3
7-10 previous convictions/cautions	9.0	9.8	15.1	14.5	15.7	15.1	16.5	16.5	17.7	19.4	17.4
11-14 previous convictions/cautions	2.6	3.6	4.8	5.1	5.0	5.0	5.7	6.0	6.5	6.9	7.5
15 or more previous convictions/cautions	1.1	1.3	1.7	2.2	2.8	2.9	3.2	3.0	4.3	4.9	5.3
All juvenile offenders (100%)	5,994	5,353	3,614	3,455	3,091	2,841	2,397	2,529	2,232	1,850	1,579

Community sentence

First time offenders	13.3	13.7	14.9	15.0	14.9	13.9	12.7	12.3	12.8	14.1	15.9
1-2 previous convictions/cautions	37.4	39.3	42.5	43.2	43.1	43.1	42.1	40.9	40.4	39.5	37.9
3-6 previous convictions/cautions	37.0	34.4	31.3	30.7	31.1	31.7	32.8	33.5	32.9	32.6	32.2
7-10 previous convictions/cautions	9.2	9.2	8.0	7.6	7.4	7.7	8.7	8.8	8.7	8.4	8.3
11-14 previous convictions/cautions	2.4	2.6	2.4	2.4	2.3	2.4	2.6	3.1	3.3	3.1	3.2
15 or more previous convictions/cautions	0.8	0.9	0.9	1.1	1.2	1.2	1.2	1.5	2.0	2.3	2.4
All juvenile offenders (100%)	29,411	31,665	34,561	34,426	35,585	37,279	39,364	37,551	33,851	29,801	26,963

Immediate custody

First time offenders	6.5	6.6	6.8	5.9	5.9	5.7	5.6	5.8	6.1	7.5	7.3
1-2 previous convictions/cautions	15.1	16.1	15.0	15.6	15.4	14.6	13.8	14.6	15.5	14.2	12.5
3-6 previous convictions/cautions	38.6	35.4	34.6	34.7	33.5	33.4	32.5	32.5	30.8	30.7	29.1
7-10 previous convictions/cautions	26.2	26.0	24.8	23.8	24.6	24.4	25.8	24.1	21.9	21.6	21.8
11-14 previous convictions/cautions	10.2	10.6	12.4	12.5	12.4	12.8	13.6	13.4	13.9	12.5	14.2
15 or more previous convictions/cautions	3.4	5.4	6.4	7.5	8.3	9.1	8.7	9.5	11.8	13.4	15.2
All juvenile offenders (100%)	6,457	6,383	5,966	6,224	6,460	6,643	6,901	6,785	6,058	4,934	4,431

Other⁽¹⁾

First time offenders	13.2	11.4	6.7	5.8	5.5	6.4	5.5	5.4	7.7	10.3	9.7
1-2 previous convictions/cautions	34.6	29.8	26.4	24.3	24.8	24.6	21.4	21.4	23.1	28.2	22.1
3-6 previous convictions/cautions	33.7	36.4	41.0	44.3	40.9	41.4	43.1	42.2	36.9	33.0	34.3
7-10 previous convictions/cautions	13.2	15.5	15.9	14.9	16.7	17.2	18.5	17.2	17.3	14.4	17.6
11-14 previous convictions/cautions	4.1	5.0	6.7	6.6	7.5	7.3	7.5	8.0	9.1	7.6	8.8
15 or more previous convictions/cautions	1.3	2.0	3.3	4.0	4.6	3.1	4.0	5.8	5.9	6.5	7.5
All juvenile offenders (100%)	2,098	2,281	1,926	1,813	1,713	1,847	1,831	1,784	1,830	2,405	1,904

All disposals⁽²⁾

First time offenders	12.5	12.2	12.1	11.9	11.9	11.3	10.5	10.1	10.5	11.6	12.7
1-2 previous convictions/cautions	36.3	36.2	36.5	36.8	36.7	36.7	35.9	34.7	34.3	33.7	31.8
3-6 previous convictions/cautions	35.5	34.6	34.2	34.2	34.0	34.2	34.7	35.5	34.7	34.3	34.1
7-10 previous convictions/cautions	11.1	11.6	11.1	10.7	10.9	11.0	11.9	11.9	11.6	11.3	11.4
11-14 previous convictions/cautions	3.3	3.8	4.1	4.2	4.1	4.3	4.5	5.0	5.3	4.9	5.3
15 or more previous convictions/cautions	1.2	1.6	1.9	2.2	2.4	2.5	2.5	2.8	3.7	4.1	4.6
All juvenile offenders (100%)	53,069	52,769	51,117	51,216	51,794	53,545	55,401	53,309	48,375	43,179	39,069

Adult offenders

Absolute discharge

First time offenders	9.6	10.3	8.3	8.8	10.6	9.6	8.9	9.0	10.6	11.7	10.6
1-2 previous convictions/cautions	15.0	14.2	13.2	11.4	12.4	11.8	11.9	11.4	9.9	14.5	11.2
3-6 previous convictions/cautions	21.1	22.0	21.0	21.2	16.2	16.5	18.4	14.8	17.3	13.2	14.9
7-10 previous convictions/cautions	16.0	16.0	14.9	15.3	14.9	13.1	11.1	13.0	10.7	9.5	10.3
11-14 previous convictions/cautions	11.0	13.4	13.3	11.4	9.7	9.0	10.0	10.0	10.4	9.0	8.7
15 or more previous convictions/cautions	27.2	24.1	29.3	31.9	36.3	39.9	39.8	41.9	41.1	42.1	44.3
All adult offenders (100%)	1,197	1,421	1,574	1,348	1,042	1,042	914	1,013	747	736	813

Conditional discharge

First time offenders	14.8	13.4	12.7	12.0	12.9	12.5	11.8	10.5	9.8	10.4	9.7
1-2 previous convictions/cautions	23.9	23.3	21.6	20.7	20.1	20.0	19.4	19.3	19.3	20.1	19.4
3-6 previous convictions/cautions	23.4	23.0	22.5	22.2	20.7	20.6	20.9	20.6	19.9	20.3	19.6
7-10 previous convictions/cautions	13.3	13.7	13.7	13.4	13.1	12.6	12.4	12.5	12.2	11.8	11.9
11-14 previous convictions/cautions	8.5	9.0	9.4	9.6	9.4	9.4	9.3	9.4	9.2	8.8	8.8
15 or more previous convictions/cautions	16.2	17.7	20.1	22.0	23.8	25.0	26.2	27.8	29.6	28.7	30.6
All adult offenders (100%)	40,545	42,047	45,291	43,706	38,442	35,995	32,695	33,457	31,568	32,888	35,536

Fine

First time offenders	10.3	9.6	8.9	9.1	9.8	9.5	8.7	7.6	6.8	6.4	6.3
1-2 previous convictions/cautions	21.2	20.1	19.0	18.1	17.7	17.9	17.9	16.9	16.8	16.9	16.4
3-6 previous convictions/cautions	27.3	26.9	26.3	25.7	24.9	24.7	25.1	24.6	24.4	24.9	24.3
7-10 previous convictions/cautions	14.9	15.4	15.5	15.2	14.7	14.6	14.4	14.9	14.9	14.7	14.6
11-14 previous convictions/cautions	9.2	9.7	10.0	10.1	10.0	9.9	9.8	10.2	10.2	10.2	10.2
15 or more previous convictions/cautions	17.2	18.2	20.4	21.7	22.9	23.4	24.1	25.8	26.9	27.0	28.2
All adult offenders (100%)	68,595	69,256	74,453	69,458	57,167	51,364	46,275	47,620	54,042	54,307	56,846

Community sentence

First time offenders	14.4	13.9	13.4	13.7	13.9	13.7	12.5	11.0	10.8	11.3	10.8
1-2 previous convictions/cautions	18.0	17.8	17.1	16.5	16.5	17.8	17.6	17.4	16.4	16.9	16.3
3-6 previous convictions/cautions	26.0	25.4	24.1	23.3	22.4	23.2	23.2	22.6	21.9	22.0	21.6
7-10 previous convictions/cautions	15.7	15.7	15.7	15.0	14.4	13.8	13.9	13.9	13.4	12.9	13.3
11-14 previous convictions/cautions	9.6	10.1	10.3	10.4	10.2	9.6	9.5	9.6	9.5	9.3	9.2
15 or more previous convictions/cautions	16.4	17.0	19.4	21.2	22.5	22.0	23.4	25.5	28.0	27.7	28.8
All adult offenders (100%)	69,323	70,446	73,868	72,106	70,925	65,468	58,867	61,961	67,649	66,632	71,697

Fully suspended

First time offenders	33.0	32.5	28.6	27.7	23.1	14.3	14.4	14.6	15.0	15.8	16.0
1-2 previous convictions/cautions	18.9	18.2	16.8	15.7	14.7	14.4	15.7	16.6	17.3	17.6	17.8
3-6 previous convictions/cautions	18.2	18.1	18.2	19.4	18.9	20.2	21.1	20.8	20.1	20.8	20.9
7-10 previous convictions/cautions	10.9	11.0	11.5	11.6	12.5	13.7	13.6	13.3	12.8	12.2	12.2
11-14 previous convictions/cautions	7.0	7.2	8.5	7.9	8.7	10.3	9.7	9.2	8.9	8.9	8.3
15 or more previous convictions/cautions	11.9	13.1	16.3	17.6	22.1	27.2	25.5	25.5	25.9	24.6	24.8
All adult offenders (100%)	2,171	2,062	2,119	2,170	2,986	15,036	26,949	30,408	30,784	31,892	32,338

Immediate custody

First time offenders	9.7	9.7	9.1	9.3	10.0	10.6	10.7	11.2	10.3	10.5	9.8
1-2 previous convictions/cautions	9.7	8.9	8.3	7.9	8.4	8.6	8.7	8.8	9.1	9.7	9.4
3-6 previous convictions/cautions	18.5	17.2	15.8	15.1	14.6	14.7	14.6	14.1	14.1	14.7	13.8
7-10 previous convictions/cautions	17.8	17.5	16.6	15.4	14.5	13.6	13.2	13.0	12.7	12.4	11.8
11-14 previous convictions/cautions	14.2	14.7	15.0	14.2	13.4	12.8	12.1	11.7	11.5	10.9	10.5
15 or more previous convictions/cautions	30.0	32.0	35.2	38.1	39.0	39.8	40.6	41.1	42.3	41.8	44.7
All adult offenders (100%)	71,668	77,631	80,470	84,071	79,810	78,550	76,104	83,197	85,068	82,410	80,581

Other⁽¹⁾

First time offenders	10.0	8.9	8.1	7.8	7.8	8.3	9.1	10.0	11.0	10.1	8.3
1-2 previous convictions/cautions	14.7	13.5	12.0	12.0	11.7	12.1	12.7	11.7	12.6	13.4	12.1
3-6 previous convictions/cautions	22.6	21.9	21.3	20.0	19.1	19.0	18.7	17.5	17.4	17.2	16.8
7-10 previous convictions/cautions	16.6	16.8	16.4	15.5	14.7	14.4	14.0	13.6	12.4	12.5	12.4
11-14 previous convictions/cautions	12.3	13.2	13.4	12.8	12.1	12.1	11.1	10.7	10.4	9.7	9.7
15 or more previous convictions/cautions	23.8	25.8	28.8	31.8	34.6	34.1	34.4	36.5	36.3	37.1	40.7
All adult offenders (100%)	10,766	11,631	12,234	11,649	10,818	10,325	10,266	11,063	11,705	14,672	16,330

All disposals

First time offenders	12.1	11.4	10.8	10.9	11.5	11.5	11.2	10.8	10.2	10.5	10.0
1-2 previous convictions/cautions	17.3	16.5	15.6	14.8	14.6	14.9	14.8	14.5	14.5	15.1	14.7
3-6 previous convictions/cautions	23.7	22.9	21.9	21.1	20.1	20.2	20.3	19.6	19.4	19.8	19.4
7-10 previous convictions/cautions	15.7	15.9	15.6	14.9	14.3	13.7	13.6	13.5	13.2	12.8	12.8
11-14 previous convictions/cautions	10.7	11.3	11.5	11.4	11.1	10.7	10.4	10.4	10.2	9.9	9.7
15 or more previous convictions/cautions	20.6	22.0	24.6	26.9	28.4	29.0	29.8	31.2	32.4	31.9	33.5
All adult offenders (100%)	264,265	274,494	290,009	284,508	261,190	257,780	252,070	268,719	281,563	283,537	294,141

(1) For 12 months ending June 2011 the 'Other' category includes some deferred sentences that the police will update on the PNC at a later date when the final decision is known.

(2) For juveniles the all disposals figures include fully suspended sentences.

Data Improvement Project

The Ministry of Justice's (MoJ) Data Improvement Project was created with the aim of improving the evidence base, performance measurement and analytical capability of the Ministry of Justice through better use of administrative data linked across different sources (within and external to MoJ). The main objectives of the project are to:

1. Produce a better evidence base and source for evaluations,
2. Produce a single comparable and consistent source,
3. Improve data quality and reduce burden on data suppliers,
4. Follow people through the Criminal Justice System,
5. Deliver cost savings.

The project also addresses feedback on MoJ's evidence base received from various sources including the UK Statistics Authority who, in their report on Overcoming Barriers to Trust in Crime Statistics, recommended the need to make it easier for the non-expert to understand the flow of offences and offenders through the criminal justice system.

The Ministry of Justice holds large administrative datasets covering activity in the Criminal Justice System (from the court system to the interventions offenders receive in prison). However, there is not one unique identifier which is recorded in all of the datasets which would allow individuals or cases to be followed. Therefore the Data Improvement Project has produced a data linking methodology which brings together information on offenders from various aspects of the Criminal Justice System (CJS). The linked data strengthens the analytical evidence base for policy making across the CJS, and provides a platform for longitudinal studies to be carried out using administrative data.

This section focuses on some early findings from this project relating to timeliness of criminal proceedings, guilty plea rates for defendants who elect to go to the Crown Court for trial, and repeat prison receptions. For more information on the Data Improvement Project, including matching methodology please see the data development section in the guide to Criminal Justice Statistics

Key points from the early findings are:

- By linking magistrates' courts and Crown Court data, we can now report timeliness from the date of offence to the date of completion in both courts – latest data shows that on average it takes 155 days from date of offence for a criminal case to progress through the court system.
- An outcome of this work is that the Ministry of Justice has been able to discontinue the *Time Intervals Survey*. This approximates to £1 million of cost savings each year and reduces the reporting burden on magistrates' court staff.
- 61 per cent of defendants who elect to go to the Crown Court for trial then plead guilty at some point in the Crown Court proceedings.
- 10 per cent of people received into prison in 2009 had more than one reception during the year.

These initial findings are being published, for the first time, to raise awareness of the Data Improvement Project and to demonstrate the potential and benefits of the new linked data.

Data linking: Overall timeliness of criminal proceedings across magistrates' courts and Crown Courts

The development of the court timeliness measure using the new linked data has allowed the Ministry of Justice to publish new information on the end to end timeliness of criminal proceedings across both magistrates' and Crown tiers of the criminal court system.

The new measure is sourced from the administrative data systems used in the magistrates' courts and Crown Court, and have been produced by linking together records held on the two datasets.

Prior to the development of the new court timeliness measure, information on the timeliness of criminal cases in the magistrates' courts and Crown Court was collected and reported on separately, with no means of linking cases together to understand the overall time taken. Previously, information on the timeliness of cases in the magistrates' courts was collected through the *Time Intervals Survey*²¹. This survey was completed quarterly by magistrates' court staff and only covered proceedings to the point of completion in the magistrates' courts for a sample of cases. The survey collected no timeliness information on the small percentage of cases that progress to the Crown Court. Improvements in the recording of timeliness of cases in the magistrates' courts, coupled with the development of a data linking methodology have allowed for the overall timeliness of criminal proceedings across both courts to be published for the first time.

As a result of the improvements to the quality and completeness of timeliness data, the *Time Intervals Survey* was discontinued in June 2011, freeing up court staff time, and providing estimated cost savings to the Ministry of Justice of approximately £1 million per annum.

The results from the court timeliness measure were first reported in Court Statistics Quarterly in September 2011 and will be published on a quarterly basis:

www.justice.gov.uk/downloads/publications/statistics-and-data/courts-and-sentencing/court-stats-quarterly-q2-2011.pdf

For all completed cases in a particular period²², the statistics measure the overall offence to completion time in the criminal courts, including intermediate stages in that process. "Offence to completion time" refers to the time taken between the date an offence is committed and date of the final outcome (completion) of the defendant's case, in either the magistrates' courts or Crown Court. For defendants whose case is sent or committed to the Crown Court, these statistics measure the entire duration

²¹ Previously, statistics on the duration of criminal proceedings in the magistrates' courts were taken from the quarterly Time Interval Survey, which was based on a sample of case and has now been discontinued. More information on the Time Intervals Survey can be found from the link below:

<http://webarchive.nationalarchives.gov.uk/http://www.justice.gov.uk/publications/timeintervals.htm>

²² This data includes all cases concluded in either the magistrates' courts or the Crown Court during the specified time period and excludes cases completed in the magistrates' court but not completed in the Crown Court.

from offence to completion in the Crown Court, including the time the case was initially dealt with in the magistrates' courts before being passed to the Crown Court.

The key timeliness events, alongside the latest timeliness estimates for defendants whose case completed during April to June 2011, are:

Overall - The total time taken for offence to completion in either the magistrates' courts or the Crown Court.

- Average total time taken for a case to complete in either the magistrates' or the Crown Court is 155 days

This overall time can be broken down into three main stages:

(1) The time taken between the offence being committed and the charge or laying of information. This is when a defendant is charged or summonsed to court.

- Average time from offence to charge / laying of information is 86 days

(2) The time taken until the first hearing in the magistrates' court. This is also known as the first listing in the magistrates' court.

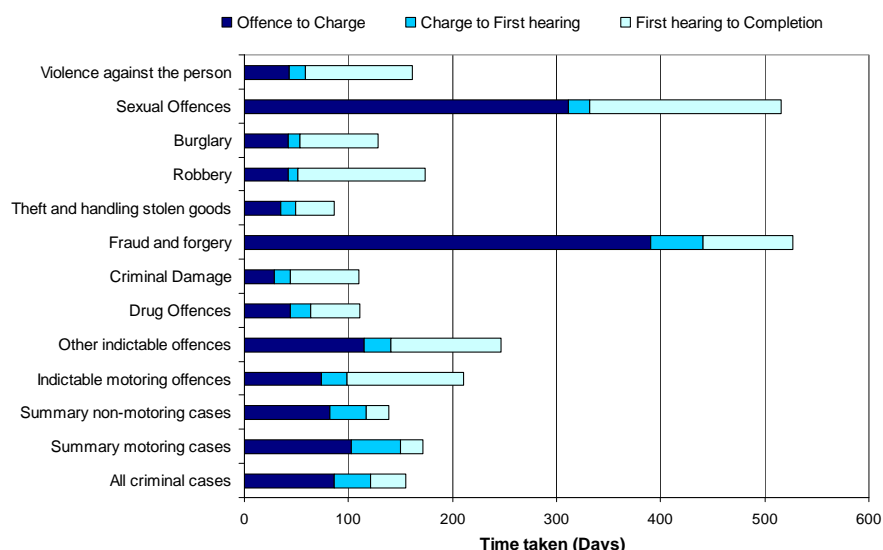
- Average time from charge / laying of information to first hearing is 35 days

(3) The time taken for the case to complete in either the magistrates' courts or the Crown Court.

- Average time from first hearing to completion is 34 days

Additionally timeliness information can be broken down by offence group, as shown in Figure 8.1. The offence groups have been shown according to the Home Office offence classification and are presented in order of the seriousness of offence type. Those cases related to the theft and handling of stolen goods took the shortest length of time generally, concluding on average within 86 days of the offence being committed. On average, criminal proceedings involving fraud and forgery offences, and sexual offences took the longest time to conclude, at 527 days and 516 days respectively. For both of these offence groups, there is a long time between offence and charge. This can be due in some cases to these offences being reported to the police some time after the actual offence took place or due to the complexity of investigating these cases.

Figure 8.1: Overall timeliness of Criminal Cases in April to June 2011 shown by offence seriousness



Crown Court guilty plea rate for defendants who elect to go to the Crown Court for trial

Most criminal court cases in England and Wales are initially heard at a magistrates' courts. If a defendant has committed an either-way offence²³ they are able to elect to go to the Crown Court so their case can be heard by a jury. Alternatively, either-way-offences that are brought to court may be dealt with entirely in the magistrates' courts or the magistrates' / district judges can commit the case to the Crown Court for the case to be heard by a jury. In general, a case being heard at the Crown Court will incur greater time and costs than one held in the magistrates' courts. This analysis looks at where the defendant elects for their case to be tried at Crown Court, but then pleads guilty at some point during their Crown Court case²⁴.

In order to understand the rate at which defendants elect to go to the Crown Court but then plead guilty it is necessary to link information from two administrative systems:

- Magistrates' court: this includes the 'mode of trial' which identifies cases where the defendant has elected to go to the Crown Court for a trial.
- Crown Court: this includes the final plea recorded at the Crown Court

This analysis is not possible using only one of these data sources due to data quality and coverage issues.

Analysis was based on principal offence and covered cases completed during 2009 and 2010.

Table 8.1 shows the plea recorded on the Crown Court administrative system for those defendants who, using the 'mode of trial' variable in the magistrates' court system, elected to go to the Crown Court for trial. 61 per cent of defendants who elected to go to Crown Court for a trial pleaded guilty at some point in the proceedings in the Crown Court.

²³ Criminal offences are classified by statute as either Indictable (the case must be heard in the Crown Court); Triable either way (the case can be heard in either the Magistrates or Crown Court) or Summary (the case is usually only heard in the magistrates' courts)

²⁴ The defendant's guilty plea in the Crown Court is the final plea as recorded on the Crown Court administrative system and could be made at any time – at the earliest opportunity (the first hearing in the Crown Court) or towards the end of the trial. The analysis does not take into account the time when the guilty plea was made.

Table 8.1 : Plea rate for defendants who elected to go to the Crown Court for trial

Plea at Crown Court	Number of defendants	Percentage
Guilty	9,609	61%
Not guilty	6,114	39%
Not applicable	40	0%
Total	15,763	100%

During the time period specified, 15,763 defendants elected for trial at the Crown Court – approximately 10 per cent of the total number of defendants where the correct match was found between the Crown Court record and the relevant magistrates' court record. This is an underestimate of the proportion of defendants who elect for trial at Crown Court, because the mode of trial information is not always available²⁵.

Repeat Prison Receptions

The Ministry of Justice publishes information quarterly, and annually on the number of people entering prison in England and Wales. This includes figures on the number of people sentenced to custody within a particular period. Through data linking, records belonging to the same person, but relating to different spells in prison can be brought together for analysis. This section looks at how many offenders have started more than one prison sentence in the 2009 calendar year.

This paper is presented as a proof of concept. It is aimed to demonstrate that the Ministry of Justice's linked data can be used to replicate existing National Statistics and also to add value to existing statistics. This work illustrates how data linking could be used to better understand the flows of offenders into prison and therefore to validate and improve the assumptions used in modelling prison projections.

For comparison, the 2009 annual statistics on offender management can be found at the following link:

www.justice.gov.uk/publications/statistics-and-data/prisons-and-probation/omcs-annual.htm

The following findings are all taken from analysing the linked data, and are based on analysis of 2009 prison receptions data. As published in Offender Management Statistics for 2009, the prison receptions included in these results relate only to sentenced receptions, and excludes any information about those people who serve time on remand, are recalled to prison, or are non criminal prisoners. In 2009 there were 94,964 prison receptions due to immediate custodial sentences. Linking identifiers were applied to this dataset so that records belonging to the same person could be easily identified and analysed.

Using the dataset described above, it was shown that there were 83,731 unique offenders who started one or more immediate custodial sentence in 2009. These 83,731 unique persons between them had 94,964 prison receptions. Of the 83,731 offenders, 8,275 offenders (or 10 per cent) had more than one sentenced reception during the year. Approximately 10 per cent of the people entering prison under sentence in 2009 accounted for 20 per cent of the sentenced prison receptions. Table 8.2 outlines these results.

²⁵ 42 per cent of cases included in the period had no valid mode of trial information.

Table 8.2 : Total sentenced prison receptions in 2009, grouped by number of prison receptions within the year

Number of sentenced prison receptions in 2009	Number of people	Percentage* of total people (%)	Total sentenced prison receptions	Percentage* of total sentenced prison receptions (%)
1	75,456	90%	75,456	79%
2	6,413	8%	12,826	14%
3	1,223	1%	3,669	4%
4	380	0%	1,520	2%
5 or more	259	0%	1,493	2%
Total	83,731	100%	94,964	100.0%

* Note that percentages may not sum due to rounding

Explanatory notes

The statistics in this bulletin relate to cases in the Crown and magistrates' courts in England and Wales during 12 months ending June 2011. This is the third set of combined quarterly criminal statistics to be published by the Ministry of Justice. This bulletin subsumes a number of previous bulletins including Criminal Statistics: England & Wales, Quarterly Sentencing Statistics, and Young people aged 10-17 receiving their first reprimand, warning or conviction.

Symbols and conventions

The following symbols have been used throughout the tables in this bulletin:

- * = Not applicable
- = Nil
- (R) = Revised data
- (P) = Provisional data

Contacts

Press enquiries should be directed to the Ministry of Justice press office:

Tel: 020 3334 3536

Email: newsdesk@justice.gsi.gov.uk

Other enquiries about these statistics should be directed to the Justice Statistics Analytical Services division of the Ministry of Justice:

Iain Bell
Chief Statistician
Ministry of Justice
7th Floor
102 Petty France
London
SW1H 9AJ
Email: statistics.enquiries@justice.gsi.gov.uk

General enquiries about the statistical work of the Ministry of Justice can be e-mailed to: statistics.enquiries@justice.gsi.gov.uk

General information about the official statistics system of the UK is available from: www.statistics.gov.uk

© Crown copyright
Produced by the Ministry of Justice
Alternative formats are available on request from
statistics.enquiries@justice.gsi.gov.uk