



## Quarter 2: 2010/2011

**Gateway reference number: 15246**

**Welcome to The Quarter – an update from David Flory, Deputy NHS Chief Executive**

Introduction	Page 2
1. Finance	Page 3
2. NHS Performance Framework	Page 6
3. Experience, satisfaction and engagement	Page 7
4. Better access to care	Page 10
5. Healthcare-associated infections	Page 14
6. Keeping adults and children well	Page 15
Annexes	Page 24

## Introduction

The NHS in Quarter 2 (Q2) continued the good start it made to the 2010/11 year. As we move towards the measurement of patient outcomes, it remains important to know how the NHS is performing against the performance measures that are currently in place.

This is a time of change in the NHS. The NHS Operating Framework for 2011/12 gives detail of how performance will be measured in the coming year. The first NHS Outcomes Framework for 2011/12, which is also published today, signals the direction of travel and starts the shift towards focusing on delivering outcomes rather than hitting process targets.

This is therefore an interim period, as performance for the current year continues to be measured against the Revised Operating Framework for 2010/11. However, it is essential for the NHS to maintain performance this year, and to focus on areas where performance needs to be improved. High quality care must be maintained even where targets have been removed or adjusted.

At Q2, the SHA and PCT sector is forecasting an overall surplus of £1,286 million, with a further £177 million operating surplus forecast in the NHS trust sector. This quarter, however, a small number of organisations are forecasting a deficit for 2010/11 and the Department will continue to work with the SHAs to ensure that these organisations have plans in place to return to financial balance, whilst at the same time maintaining and improving services to patients.

The Performance Framework results for Q2 2010/11 reveal that the majority of trusts in England continue to meet standards and perform well, with some trusts improving their performance from the previous quarter. There are however a number of trusts that continue to under perform, which must be addressed.

Improving patient experience of the NHS is a priority, and this report covers the more robust approach to mixed-sex accommodation reporting. Waiting times are also of importance to patients, and the Q2 data shows that referral to treatment waiting times are broadly stable, though again with local variation. Cancer waiting times standards have been maintained above the operational standards. A&E performance has been maintained despite increased attendances, and there have been improvements in response times to calls to the ambulance service.

Lastly, Sir David Nicholson wrote to the NHS on 23 November about the importance of being well prepared for winter. Good winter planning is key to continued delivery and a quality patient experience.

## 1. Finance

The returns for the second quarter of 2010/11 show that SHAs and PCTs are forecasting an overall surplus of £1,286 million (£1,345 million surplus at Q1), which is 1.3 percent of total revenue resources. This forecast surplus is in line with the revised Operating Framework, and will help to ensure funds are available for improving quality and meeting the demands during transition, particularly as we move forward into the planning period ahead.

At Q2 NHS trusts (excluding foundation trusts) are forecasting an overall operating surplus of £177 million (£186 million operating surplus at Q1).

**Figure 1 - NHS Financial Performance by SHA area - SHA & PCT sector**

	2007/08		2008/09		2009/10		2010/11 Quarter 2 Forecast Outturn	
	£m	% Resource Limit	£m	% Resource Limit	£m	% Resource Limit	£m	% Resource Limit
North East	96	2.2%	109	2.3%	80	1.6%	69	1.3%
North West	273	2.3%	295	2.4%	185	1.4%	185	1.3%
Yorkshire & The Humber	243	3.0%	216	2.5%	185	2.0%	143	1.5%
East Midlands	94	2.1%	107	1.6%	83	1.2%	85	1.1%
West Midlands	102	2.3%	101	1.2%	80	0.8%	72	0.7%
East of England	59	1.3%	139	1.7%	137	1.5%	100	1.0%
London	238	5.4%	327	2.3%	382	2.4%	395	2.4%
South East Coast	51	1.2%	62	1.0%	50	0.7%	74	1.0%
South Central	37	0.8%	44	0.8%	60	0.9%	58	0.9%
South West	101	2.3%	104	1.3%	95	1.1%	105	1.2%
<b>Total</b>	<b>1,294</b>	<b>1.7%</b>	<b>1,504</b>	<b>1.8%</b>	<b>1,337</b>	<b>1.5%</b>	<b>1,286</b>	<b>1.3%</b>

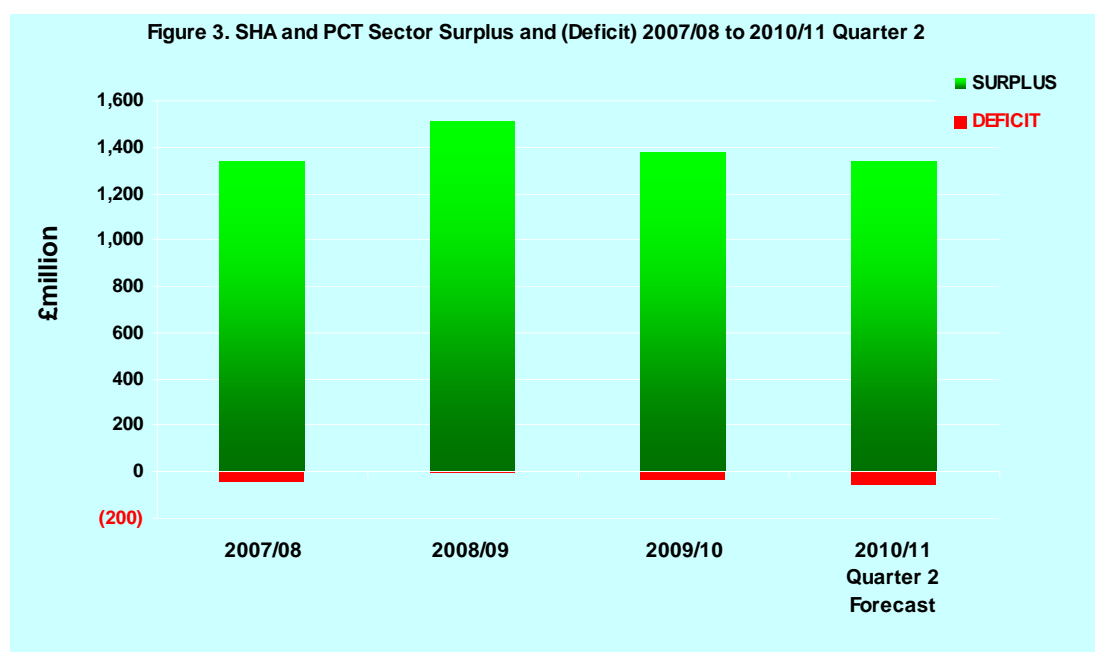
**Figure 2 - NHS Financial Performance by SHA area - Trust sector**

	2007/08		2008/09		2009/10		2010/11 Quarter 2 Forecast Outturn	
	£m	% Turnover	£m	% Turnover	£m	% Turnover	£m	% Turnover
North East	33	2.9%	17	0.3%	10	3.0%	3	3.2%
North West	44	3.9%	(15)	(0.1%)	15	0.5%	17	0.6%
Yorkshire & The Humber	16	1.4%	44	0.4%	14	0.6%	7	0.3%
East Midlands	36	3.2%	22	0.2%	18	0.7%	3	0.1%
West Midlands	51	4.5%	48	0.4%	53	1.6%	36	1.1%
East of England	26	2.3%	40	0.4%	30	1.4%	32	1.4%
London	47	4.1%	(21)	(0.1%)	(3)	(0.0%)	15	0.2%
South East Coast	34	3.0%	49	0.5%	37	1.5%	23	1.0%
South Central	38	3.3%	18	0.2%	(7)	(0.3%)	10	0.4%
South West	48	4.2%	33	0.3%	28	1.3%	31	1.5%
<b>Total</b>	<b>373</b>	<b>1.1%</b>	<b>235</b>	<b>0.8%</b>	<b>195</b>	<b>0.7%</b>	<b>177</b>	<b>0.6%</b>

There are four PCTs forecasting a total deficit of £56 million at Q2. These are Haringey PCT (£25 million), Sutton and Merton PCT (£15 million), Cumbria Teaching PCT (£11 million) and Peterborough PCT (£5 million). There were no PCTs forecasting a deficit at Q1.

There are three NHS trusts forecasting a gross operating deficit of £69 million<sup>1</sup> in Q2. The three NHS trusts forecasting a gross operating deficit at Q2 are United Lincolnshire Hospitals NHS Trust (£14 million), Barking, Havering and Redbridge University Hospitals NHS Trust (£19 million), and South London Healthcare NHS Trust (£36 million). Barking, Havering and Redbridge University Hospitals NHS Trust and South London Healthcare NHS Trust were forecasting the same position at Q1. United Lincolnshire Hospitals NHS Trust were forecasting a £1 million operating surplus at Q1.

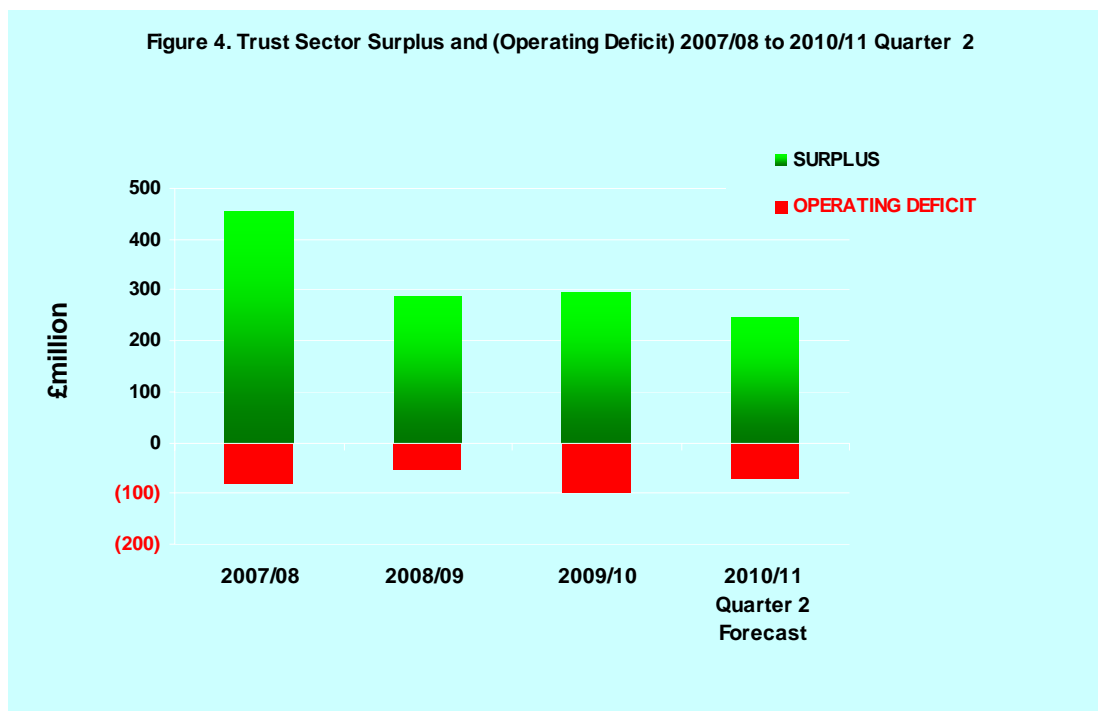
We must not be complacent and, whilst the overall financial position remains healthy, the Department will continue to work with the SHAs to ensure that, during 2010/11, the seven organisations that are forecasting a deficit have plans in place to return to financial balance, whilst at the same time maintaining and improving services to patients.



<sup>1</sup> In addition to the gross operating deficit, there is a gross technical deficit of £354 million in forty two NHS trusts (two of these organisations also have an operating deficit).

A technical deficit is a deficit arising due to one or both of the following:

- Impairments to Fixed Assets** – 2009/10 was the final year for organisations to revalue their assets to a Modern Equivalent Asset (MEA) basis of valuation. An impairment charge is not considered part of the organisation's operating position.
- The revenue cost of bringing PFI assets onto the balance sheet** (due to the introduction of International Financial Reporting Standards (IFRS) accounting in 2009/10) - NHS trusts' financial performance measurement needs to be aligned with the guidance issued by HM Treasury measuring Departmental expenditure. Therefore, the incremental revenue expenditure resulting from the application of IFRS to PFI, which has no cash impact and is not chargeable for overall budgeting purposes, should be reported as technical.



## 2. NHS Performance Framework

The Performance Framework results for Q2 2010/11 reveal that the majority of trusts in England continue to meet standards and perform well, with some trusts improving their performance from the previous quarter. There are however a number of trusts that continue to under perform, which must be addressed.

The Q2 Finance results reveal that nationally, there are 73 trusts 'Performing' (62 acute trusts and 11 ambulance trusts), six trusts with 'Performance under review' (all acute trusts), and seven trusts 'Underperforming' (all acute trusts).

The Q2 Quality of Service results reveal that there are 71 trusts 'Performing' (62 acute trusts and nine ambulance trusts), and 15 trusts with 'Performance under review' (13 acute trusts and two ambulance trusts). Of these 15 trusts, nine trusts were escalated to 'Underperforming' (eight acute trusts and one ambulance trust) having had their 'Performance under review' for three consecutive quarters.

Of the seven trusts 'Underperforming' on Finance, six have been escalated to 'Challenged' due to having been 'Underperforming' for three consecutive quarters (all acute trusts). Additionally, Portsmouth has been escalated to 'Challenged'. There are a number of trusts that have been escalated to 'Challenged' either due to having outstanding debt with the Department with no plans for repayment, or due to outstanding concerns regarding their underlying financial health.

The seven trusts 'Challenged' on Finance are:

- Barking, Havering & Redbridge University Hospitals NHS Trust
- North West London Hospitals NHS Trust
- Portsmouth Hospitals NHS Trust
- South London Healthcare NHS Trust
- Trafford Healthcare NHS Trust
- West Middlesex University Hospital NHS Trust
- Whipps Cross University Hospital NHS Trust

This edition is the first to feature results for the Mental Health Trusts Performance Framework. This framework went live on 1 April 2010, with Q1 mental health results being published now, due to the availability and timeframes of the datasets involved.

The Q1 2010/11 results show that all 17 non-foundation trust mental health trusts in England are 'Performing' on Finance, and that just three trusts had their 'Performance under review' on Quality of Services, with the remaining 14 trusts 'Performing'.

### **3. Experience, satisfaction and engagement**

#### **Eliminating mixed-sex accommodation**

***Secretary of State announced robust new steps to ensure that from January 2011, NHS organisations routinely report breaches of same-sex accommodation guidance.***

In August Secretary of State announced robust steps to ensure NHS organisations routinely report breaches of same sex accommodation guidance. The revised Operating Framework for 2010/2011 made clear that NHS organisations are expected to eliminate mixed-sex accommodation, except where it is in the overall best interest of the patient, or reflects their personal choice.

There has previously been no central requirement to report breaches of the guidance. The new reporting arrangements – focusing on sleeping accommodation – will ensure a higher degree of scrutiny and transparency of progress to eliminate mixed-sex accommodation. Breaches of guidance relating to bathrooms/WCs, and day areas in mental health units, will be monitored and resolved locally, through the usual contract arrangements. Occurrences of mixing that are in the best interest of the patient will be monitored locally, but will not be reported centrally.

The new data collection is explained in a Professional Letter (PL), issued on 18 November this year, and through a series of Webex interactive events with local leads. The PL can be seen at:

[www.dh.gov.uk/en/Publicationsandstatistics/Lettersandcirculars/Professionalletters/Chiefnursingofficerletters/DH\\_121848](http://www.dh.gov.uk/en/Publicationsandstatistics/Lettersandcirculars/Professionalletters/Chiefnursingofficerletters/DH_121848)

Reporting is through Unify2 and requires all breaches of sleeping accommodation to be captured, (for each patient affected). Where breaches occur, commissioners should consider imposing financial sanctions ranging from a minimum of 10 percent of the cost of the procedure/service of all patients affected (for individual patient breaches), to withholding, and ultimately retaining funds for an organisational-level breach. Local reporting systems are being established immediately, with subsequent data being made public from January 2011 (i.e. the breach data from December 2010).

#### **Patient experience**

***Improving the experience of patients is a priority in the 2010/11 NHS Operating Framework and it is important that the NHS continues to improve the quality of care delivered.***

The recent consultation *Transparency in outcomes – a framework for the NHS* (available at:

[www.dh.gov.uk/prod\\_consum\\_dh/groups/dh\\_digitalassets/@dh/@en/documents/digitalasset/dh\\_117591.pdf](http://www.dh.gov.uk/prod_consum_dh/groups/dh_digitalassets/@dh/@en/documents/digitalasset/dh_117591.pdf)) made clear that patient experience remains a key way of measuring service quality, both locally and nationally.

The self-reported experiences of patients are a crucial source of information that can help the NHS to embed quality as its guiding principle. There are a number of ways that the Department currently records and measures these experiences, which are

published periodically throughout the year. Many of these have been covered in recent editions of The Quarter.

Whilst recent surveys indicate that most patients report a positive experience of care, this is of little consolation to patients who are treated in organisations that have not kept pace with the best.

### **NHS National Patient Survey Programme**

To date, four surveys have been published as part of the 2009/10 survey programme, coordinated by the Care Quality Commission (CQC). Detailed results for the outpatient, adult inpatient, community mental health and maternity surveys are available on the CQC website:

[www.cqc.org.uk/aboutcqc/howwedoit/involvingpeoplewhouseservices/patientsurveys.cfm](http://www.cqc.org.uk/aboutcqc/howwedoit/involvingpeoplewhouseservices/patientsurveys.cfm)

Summarised results of the outpatient and inpatient surveys were made available in previous editions of The Quarter.

### **Community Mental Health Survey**

The Community Mental Health Survey was published in September 2010 and showed a broadly positive picture of patients' experiences of community mental health services. Because of various changes in sampling and content, these survey results are not comparable with those community mental health surveys carried out in 2004 and 2008.

Health and social care workers were rated highly:

- Nearly all respondents said that they were definitely (88 percent) or to some extent (10 percent) treated with dignity.
- 97 percent said that they were listened to carefully either definitely (80 percent) or to some extent (17 percent).
- Nearly all respondents said that they had confidence in the last health or social care worker that they saw, with 72 percent definitely having trust and 21 percent having trust to some extent.

The picture with regard to information about medications is more variable. Whilst 93 percent of respondents said that the purpose of new medication had been explained to them either definitely (69 percent) or to some extent (24 percent), nearly one third (29 percent) of respondents said that they were not informed of possible side effects from new medication.

More detailed information is available on the CQC website:

[www.cqc.org.uk/aboutcqc/howwedoit/involvingpeoplewhouseservices/patientsurveys/communitymentalhealthservices.cfm](http://www.cqc.org.uk/aboutcqc/howwedoit/involvingpeoplewhouseservices/patientsurveys/communitymentalhealthservices.cfm).



## **Overall Measure of Patient Experience**

Results from the NHS national patient surveys are also used by the Department to construct an Overall Measure of Patient Experience in England for several settings in the NHS. The figures are calculated the same way for each update so it is possible to compare results over time.

[www.dh.gov.uk/en/Publicationsandstatistics/PublishedSurvey/NationalsurveyofNHSp  
atients/DH\\_087516](http://www.dh.gov.uk/en/Publicationsandstatistics/PublishedSurvey/NationalsurveyofNHSp<br/>atients/DH_087516)

## **NHS Performance Framework**

As described in recent implementation guidance on the NHS performance framework, results from the adult inpatient survey and community mental health surveys will be used to assess the performance of individual trusts.

Under the framework, local organisations can submit evidence to their SHA of improved patient experience and request an in-year re-assessment of their performance under the User Experience domain of the framework.

## 4. Better access to care

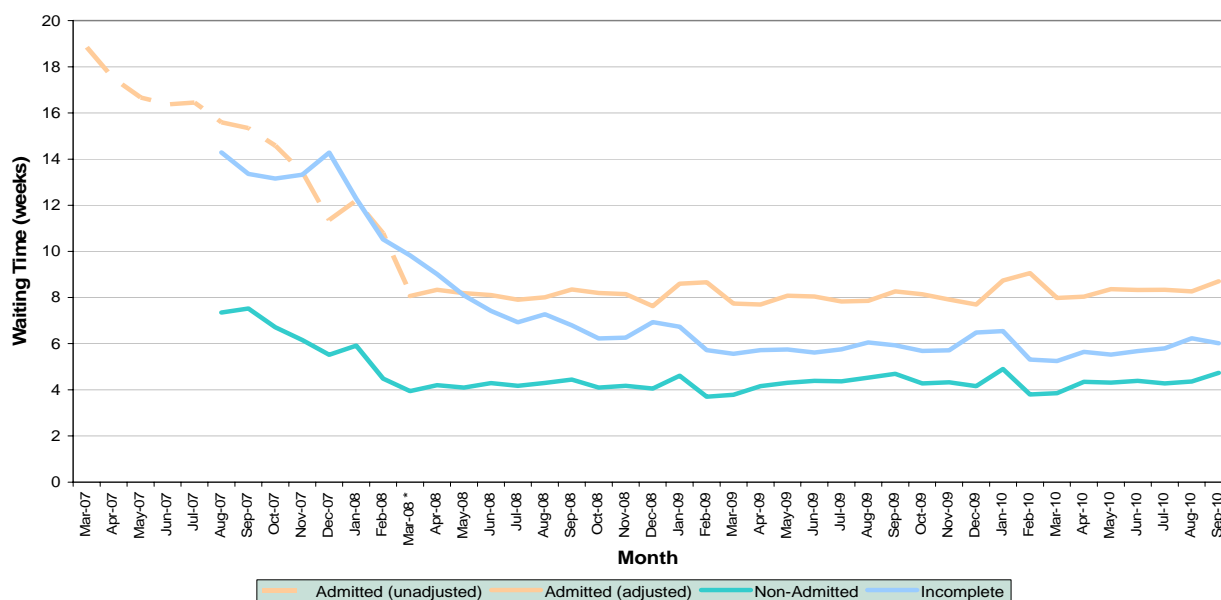
### Referral to treatment (RTT) consultant-led waiting times

Central performance management of the previous 18-week waiting time target has ceased, but average (median) waiting times and quality should be maintained. Waiting times are of importance to patients and commissioners must, as a minimum, maintain the contractual position and ensure that any flexibility to improve access reflects local clinical priorities.

The average (median) time waited for patients completing an RTT pathway in September 2010 was 8.7 weeks for admitted patients and 4.7 weeks for non-admitted patients. The 95th percentile time waited for patients completing an RTT pathway in September 2010 was 20.4 weeks for admitted patients and 15.5 weeks for non-admitted patients. For patients still waiting for treatment (incomplete pathways) in September 2010, the median waiting time was six weeks and the 95th percentile was 23.8 weeks.

These data show that the NHS was broadly maintaining waiting times for completed pathways, although there is variation in performance across the country that needs to be addressed. The (median) waiting time for incomplete pathways also remained broadly stable, but the number of incomplete pathways increased. Action must be put in place to ensure that average waiting times improve and to further reduce RTT waiting times in organisations where patients experience exceptionally long waits. In September 2010, 74 acute trusts had above average waits.

Figure 5: Average (Median) RTT Waiting Times, England



## Cancer waits

**Performance status: Maintained**

*Performance levels for all cancer waiting times standards were maintained at levels above the operational standards.*

Q2 figures for two-week, 31-day and 62-day outpatient services and first definitive treatments show that waiting times are as follows:

- Two week wait – 95 percent of people seen by a specialist within two weeks of an urgent GP referral for suspected cancer (95.5 percent in Q1 2010/11).
- 31-day wait – 98.4 percent of patients receiving first treatment within 31 days of diagnosis, for all cancers (unchanged from Q1 2010/11).
- 62-day wait – 87.1 percent of patients receiving first treatment within 62 days of an urgent GP referral for suspected cancer, for all cancers (87.5 percent in Q1 2010/11).

All of these levels of performance were above the specified operational standards.

Figures by cancer or treatment type (for first and subsequent treatments) and for non-cancer two-week wait activity are as follows:

- Breast symptom two week wait – 94.2 percent of people urgently referred for breast symptoms (where cancer was not initially suspected) were seen within two weeks of referral (94.3 percent in Q1 2010/11).
- 31-day wait – 99.3 percent of patients receiving first treatment within 31 days of a diagnosis of breast cancer (99 percent in Q1 2010/11).
- 62-day wait – 97.2 percent of patients receiving first treatment within 62 days of an urgent GP referral for suspected cancer, breast cancer (97.7 percent in Q1 2010/11).
- 31-day wait – 97.0 percent of people treated within 31 days where subsequent treatment is surgery (97.6 percent in Q1 2010/11).
- 31-day wait – 99.6 percent of people treated within 31 days where subsequent treatment is an anti-cancer drug regimen (99.7 percent in Q1 2010/11).
- 62-day wait – 93.7 percent of people first treated within 62 days following a consultant's decision to upgrade a patient's priority, for all cancers (94.1 percent in Q1 2010/11).
- 62-day wait – 93.6 percent of people first treated for cancer within 62 days following referral from an NHS screening service, for all cancers (94.5 percent in Q1 2010/11).

All of these levels of performance were also above the specified operation standard.

## Dentistry

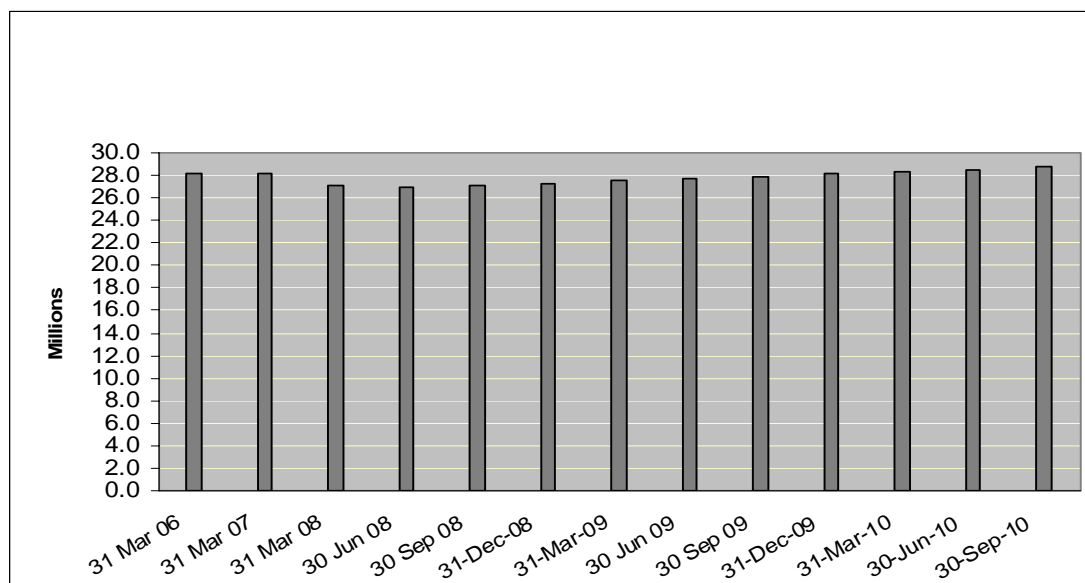
**Performance status: Improved**

### *Access to NHS dentistry continues to grow quarter on quarter.*

The latest data shows that the number of patients accessing NHS dentistry has grown for the ninth consecutive quarter. Over the last two years (from the 24 months ending September 2008 to the 24 months ending September 2010), around 1.67 million more patients have accessed NHS dental services.

Access overall is up by 558,000 when compared to the 24 months ending March 2006. However, access for children is still 69,000 lower than in March 2006 and access as a percentage of the population is 55.8 percent now, which was the same as in March 2006.

**Figure 6: Number of patients seen by an NHS dentist (millions)**



## A&E

**Performance status: Maintained**

*The previous government had a target that no one should wait more than four hours in accident and emergency from arrival to admission, transfer or discharge. The threshold for performance against this standard was reduced from 98 to 95 percent with effect from Q2 of 2010/11.*

98 percent of patients spent four hours or less from arrival, transfer or discharge in Q2 2010/11. This compares to 98.4 percent in the previous quarter (Q1 2010/11) and 98.7 percent for the same quarter last year (Q2 2009/10). There were 5.4 million attendances at all types of A&E departments, a 3.3 percent increase from the same quarter last year (Q2 2009/10) and a 2.6 percent decrease from the previous quarter (Q1 2010/11).

For major A&E (type 1s) there was a 2.2 percent increase in attendances over the same quarter last year (Q2 2009/10) and a 2.4 percent decrease from the previous quarter (Q1 2010/11). Of the 3.5 million patients who attended major A&E departments (type 1s), 24.3 percent or 0.85 million needed to be admitted to hospital. Of these, 98.09 percent were placed in a bed in a ward within four hours of a decision to admit. This compares to 98.34 percent in the previous quarter (Q1 2010/11).

## Ambulances

**Performance status: Improved**

*Provisional unverified data is available in-year for year-to-date performance and this indicates that ambulance services nationally achieved against the Category A, 8-minute response time target and made improvements against the Category B, 19-minute response time targets when compared with the same year-to-date information in Q2 the previous year.*

The ambulance service have responded to more Category A (immediately life threatening) and B (serious, but not immediately life threatening) calls when compared to the year-to-date figure at the end of Q2 in 2009/10, with around 2,443,728 calls being handled compared to 2,401,204.

Despite continued increases in the levels of demand, the ambulance service nationally have responded to 76.4 percent of category A calls within eight minutes (compared to 74.8 percent for the same period of time in 2009/10) and 93 percent of category B calls within 19 minutes (compared to 91.1 percent for the same period of time in 2009/10).

## **5. Healthcare-associated infections**

### **MRSA number of infections and rates of *Clostridium difficile***

**Performance status: Improved**

***MRSA bacteraemia and C. difficile infections continued to reduce in Q2 2010/11, compared with both the previous quarter and the same quarter last year.***

The NHS has already significantly reduced MRSA bloodstream and *C. difficile* infections. However, there remains capacity to drive down these and other infections further, and eliminate variation. The Government made clear in the revision of the NHS Operating Framework 2010/11 that the NHS should aim for a zero tolerance approach to all healthcare associated infections.

In Q2, 394 MRSA bloodstream infections were reported, which is six percent fewer than the previous quarter and a 15 percent improvement on the same quarter last year. There were 814 MRSA bloodstream infections reported in the first six months of 2009/10, which is a 16 percent decrease on the same period in the previous year.

In Q2, 5,891 *C. difficile* infections were reported, which is two percent fewer than the previous quarter and an eight percent improvement on the same quarter last year. There were 11,874 *C. difficile* infections reported in the first six months of 2010/11, which is a 10 percent decrease on the same period in the previous year.

## 6. Keeping adults and children well

### Health inequalities

New 2007-09 data show average life expectancy continues to improve and is at record levels, even in the most disadvantaged areas. However, the improvement has been slower in the areas with the worst health and deprivation – the former Spearhead Group of areas.

The Government has ended the previous system of Public Service Agreement targets, including the inequalities life expectancy target, which focused on the former Spearhead Group. However, the Government has made it clear that fairness and social justice are key principles, and tackling inequalities in health status, access and outcomes among disadvantaged people and in disadvantaged areas remains a priority.

**Figure 7: Comparison of Life Expectancy at Birth (years) in England and former Spearhead Group Areas**

		1995-97 Average Life Expectancy	2007-09 Average Life Expectancy	Difference (years)	Relative Gap
Males	England	74.6	78.3	3.6	+7%
	Former Spearheads	72.7	76.1	3.4	
Females	England	79.7	82.3	2.6	+13%
	Former Spearheads	78.3	80.7	2.4	

Source: Analysis by Dept of Health of data from Office for National Statistics

Note: All figures are independently rounded

### Action to tackle inequalities

The NHS has a critical role to play in reducing these inequalities, and the revision to the NHS Operating Framework (21 June 2010) confirmed that PCTs are still expected to deliver the All Age All Cause Mortality (AAACM) Vital Signs Plans they agreed as part of the 2010/11 planning round. If achieved, these plans will help to narrow national health inequalities gaps.

For male AAACM, 47 percent of PCTs (72 out of 152) met their 2009 plan point. 31 percent of PCTs (47 out of 152) were five percent or less off plan and 22 percent of PCTs (33 out of 152) were more than five percent off plan.

For female AAACM, 66 percent of PCTs (100 out of 152) met their 2009 plan point. 21 percent of PCTs (32 out of 152) were five percent or less off plan and 13 percent of PCTs (20 out of 152) were more than five percent off plan. A full list can be seen in Annex 14.

The Department of Health is committed to providing the support and tools to help local delivery. The Department's National Support Team for Health Inequalities continues to offer targeted support to areas with poor health outcomes, disseminating the priority actions that will help narrow local health gaps, holding master classes to overcome barriers to progress and sharing good practice across PCTS and local authorities.

## Immunisation

**Performance status: Improved**

*Vaccine uptake figures for 2009/10, which were published by the Information Centre on 30 November, show significant increases compared to the previous year.*

The latest figures covering 2009/10 show that uptake rates for all the routine childhood vaccinations were significantly higher compared to the previous year. It is anticipated that HPV uptake figures for the school year 2009/10 will become available early in the New Year. The increases in uptake were greatest in London but, despite this, this region continues to have the lowest uptake rates in England. There have been particularly large increases in uptake for Hib/Men C and PCV at two years, and DtaP/IPV and two doses of MMR at five years.

Other key findings include:

- For children reaching their second birthday, uptake of Diphtheria, Tetanus, Polio and Pertussis vaccine in 2009/10 was 95.3 percent, exceeding the World Health Organisation target of 95 percent for the first time since the combined vaccine was first reported in 2006/07.
- Uptake of MMR vaccine for children reaching their second birthday increased to 88.2 percent in 2009/10 (in 2008/09 it was 84.9 percent), after falling to a low of 79.9 percent in 2003/04.
- 82.7 percent of children had received their first and second dose of MMR vaccine at age five, a substantial increase on last year's uptake of 78 percent. The increase in MMR uptake in 2008/09 and 2009/10 might be partly explained by the MMR catch-up campaign launched in late 2008.

## NHS Health Checks programme

Ministers are committed to the future of the NHS Health Check programme, and further plans will be published in due course. The data collection will be published when PCTs have the chance to adapt to the new requirements.



## Diabetic retinopathy

**Performance status: Improved**

*At Q2, 96.8 percent of patients with diabetes were offered screening for diabetic retinopathy during the previous 12 months.*

Good progress has been made and more people with diabetes are being offered screening for retinopathy than ever before and to higher standards. However, the speed of progress is variable across the country and some PCTs are still not offering screening to *all* people with diabetes.

England alongside other UK countries leads the world and this is the first time a population based screening programme has been introduced on such a large scale. The Department of Health is working with partners in the NHS and the voluntary sector to improve the standards, quality and coverage of screening programmes across the country, including a programme of external quality assurance.

The English National Screening Programme for Diabetic Retinopathy has been working with local programmes to improve the quality of the retinal screening programme offered across England. In some cases programmes have temporarily reduced the number of people screened to allow changes to processes to increase the quality of care. Nationally this has had an impact on the total number of people offered screening.

The number of people with diabetes is rising. Latest figures for Q1 show that 2.097 million people were offered screening and the number of people with diabetes stands at 2.36 million. When the screening programme was introduced in 2003 the number of people with diabetes stood at 1.3 million.

## Smoking cessation

Q2 data on smoking cessation will be available for the next edition of The Quarter.

## Stroke and Transient Ischaemic Attack (TIA)

### **Stroke:**

**Performance status: Improved**

73 percent of patients admitted with a stroke spent 90 percent or more of their time on a stroke unit. In Q1 2010/11, the position was 68.1 percent. The expected position by the end of 2010/11 is that 80 percent of patients should do so.

Variation across PCTs:

Commenting on the variation seen in the data for stroke across all PCTs:

- *The NHS Atlas of Variation in Healthcare: reducing unwanted variation to increase value and improve productivity* (November 2010) found that there is

a greater than fourfold variation among PCTs in the percentage of patients admitted to hospital following a stroke and who spend 90 percent or more of their time on a stroke unit.

- When the five PCTs with the highest percentages and the five PCTs with the lowest percentages are excluded, there is almost threefold variation.
- The Atlas says: 'Redesigning whole systems is key to improving access to specialist stroke units. Many changes can be accomplished within existing resources.'

## TIA:

**Performance status: Improved**

58.4 percent of patients with a higher risk of stroke presenting in an outpatient setting were treated within 24 hours. The position at Q1 2010/11 was 56.2 percent. The expected position by the end of 2010/11 is 60 percent. Nine PCTs did not submit data on TIA, of which eight stated that this was not their preferred method of treatment and the remaining PCT stated they were not in a position to submit data.

Variation across PCTs:

The standard method used to identify variation for the NHS Atlas is to exclude the five PCTs with the highest percentages and the five PCTs with the lowest percentages. The Atlas comments that for the TIA indicator:

*... it is very encouraging to note that when this method is applied, there are still some PCTs where 100 percent of TIA cases with a higher risk of stroke are treated within 24 hours. During 2009/10, five PCTs did not have any high-risk TIA cases, thus the number of PCTs for which variation could be assessed is 147. When the five PCTs with the highest percentages and the five PCTs with the lowest percentages are excluded, there is a greater than 10-fold variation.*

The Atlas points to case studies from the Stroke Improvement Programme, which it says gives effective solutions to improving timely access for people with TIA. (View the case studies at:

[www.improvement.nhs.uk/stroke/CaseStudies/tabid/60/Default.aspx](http://www.improvement.nhs.uk/stroke/CaseStudies/tabid/60/Default.aspx))

We are again asking Directors of Performance Management to work with the Stroke Improvement Networks and the NHS to help to deliver the changes necessary to deliver improved outcomes for people who have a stroke or experience a TIA.

## Children and Adolescent Mental Health Services (CAMHS)

**Performance status: Improved**

*There was an improved performance on the four proxy measures for delivering comprehensive CAMHS, with 80 PCTs now fully compliant on all the proxy measures.*

Progress towards delivering comprehensive CAMHS is being measured via four proxy measures: learning disability services; age-appropriate services for 16/17 year olds; 24-hour cover; and early intervention support services. Access to these services is reported on a scale of one to four; one representing the lowest access and four the highest.

After a patchy performance in Q1, there was an improvement on all four proxy measures in Q2. There were no PCTs scoring a one on any of the proxy measures and only two scores of two. The number of PCTs scoring four for all four proxies increased from 75 to 80.

Figure 8: Access to CAMHS Q2 2010/11

Rate	CAMHS for children and young people with learning disabilities	Age appropriate services for 16 and 17 year olds	24-hour cover	Full range of early intervention services commissioned by the local authority and PCT in partnership
1	0	0	0	0
2	1	0	0	1
3	39	15	12	48
4	111	136	139	102

### Bed days for under-18 years old on adult psychiatric wards

**Performance status: Maintained**

*No under-16s on adult psychiatric wards this quarter, the fourth successive quarter that this has been achieved.*

The latest bed day figures for the period July to September 2010 show no under-16s on adult psychiatric wards. The bed day figures for 16/17 year olds on adult psychiatric wards of 1,423 was slightly down on the previous quarter. 97.2 per cent of bed days for under-18s were on CAMHS wards.

Since 1 April 2010, hospital managers have a legislative duty to ensure that patients aged under 18 are treated in an environment in hospital that is suitable, having regard to their age and subject to their needs.

A number of best practice products have been produced to support local areas on this issue and these are at [www.nmhdu.org.uk/nmhdu/tags/?tag=children](http://www.nmhdu.org.uk/nmhdu/tags/?tag=children)

## Breast screening

**Performance status: Improved**

*The proportions of women in the extended age range are now being reported by PCTs against plans and are slightly higher than trajectory, although concerns remain in some areas around engagement and conversion to digital mammography.*

Five pilot sites have successfully rolled out breast screening to women aged 47 to 73. Performance on the three-year interval between screening rounds, which local programmes have been working on in preparation for the age extension, has improved with over 90 percent of women now invited within the three-year standard. As per the NHS Operating Framework 2010/11, all local screening programmes are expected to begin the age extension in 2010/11. As at November 2010, 17 of the 81 local programmes had begun the age extension.

## Bowel screening

**Performance status: Improved**

*The proportions of men and women in the extended age range are now being reported by PCTs against plans and are slightly higher than trajectory, although those PCTs that began the original programme later will not begin the age extension until later, some in 2012*

As from 23 August 2010, all 153 PCTs in England are offering bowel cancer screening to people in the 60 to 69 years age range who are registered with a GP. This completes the initial roll-out of the bowel cancer screening programme across England.

As at November 2010, nearly five million men and women had been screened and over 6,500 cancers detected. Five pilot sites have successfully rolled out the age extension to men and women aged 70 to 75, and the Revision to the NHS Operating Framework 2010/11 said that all PCTs that have completed their first two-year screening round should implement the age extension in 2010. The remaining PCTs should plan to extend their programmes on completion of their first two-year screening round. 29 out of 58 centres have now extended their programmes.

## Chlamydia

**Performance status: Maintained**

*Most areas are off trajectory for the second quarter of 2010/11.*

Q2 data for the National Chlamydia Screening Programme shows that six percent of 15-24 year olds were tested in that period. 26 PCTs reached or exceeded their

planned trajectory for the second quarter. However, only 17 PCTs have met or exceeded their planned trajectory for the first six months.

At the end of Q2 last year, a cumulative total of 8.6 percent of the target population had been tested. The cumulative total for the first six months of this year is 11.4 percent. While this indicates steady progress, most areas are off trajectory for the planned testing volumes. A steady acceleration of sustainable growth in the programme is therefore needed. This should be focused on increasing testing levels in core health services, such as community contraception and sexual health services, general practice, community pharmacy and termination of pregnancy services, where there are already encouraging signs of growth, demonstrates value for money and enables wider preventative messages around contraception, condom use and safer sex to take place.

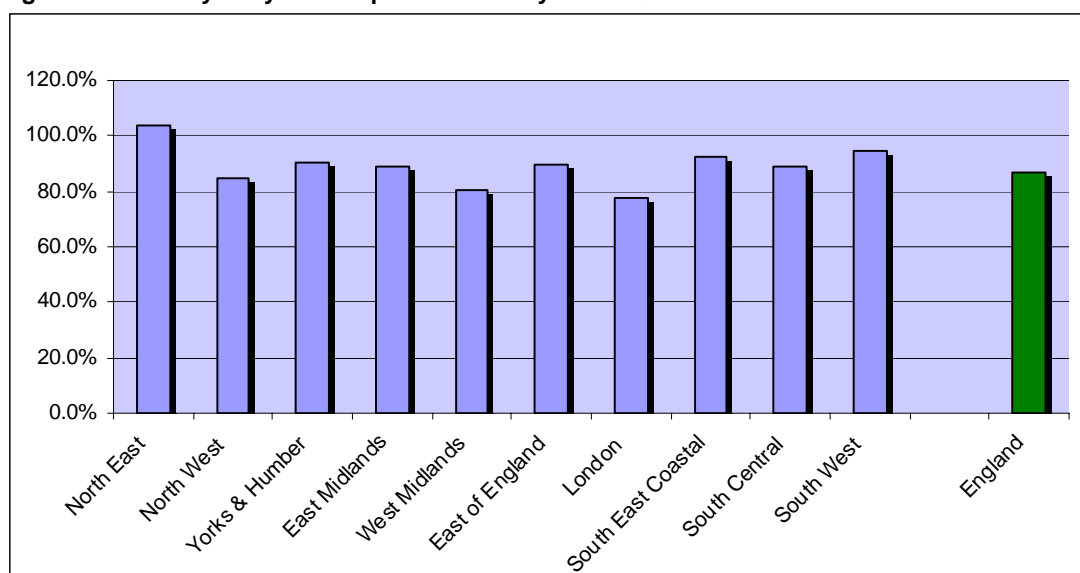
### Maternity and newborn

**Performance status: Maintained**

*Latest data indicates the percentage of women being assessed by 12 weeks and six days remains stable.*

PCT performance is measured by the 'maternity early access' indicator: the percentage of women who have seen a midwife or a maternity healthcare professional, for an assessment of health and social care needs, risks and choices by 12 completed weeks of pregnancy. The latest data submitted indicates performance is being maintained with 87.1 percent of women in England assessed by 12 completed weeks of pregnancy in Q4, 2009/10 – comparable with 87.3 percent in Q3 2009/10.

**Figure 9: Maternity early access performance by SHA - Q4 2009/10**



## Breastfeeding

**Performance status: Maintained**

*The five-yearly National Infant Feeding Survey shows a continuous increase in breastfeeding initiation rates over time.*

Increasing breastfeeding prevalence by 10 percent at six months reduces health service costs by an estimated £7.1m every year.

The NHS is encouraged to implement the UNICEF UK Baby Friendly Initiative, which is an evidence-based approach to supporting women who wish to breastfeed, in hospitals and at home.

## Under-18 conception rates

**Performance status: Improved**

*Under-18 conception rates continue to fall but progress should be improved.*

Teenage pregnancy is a key cause of health inequalities and poor outcomes for both teenage parents and their children. Rates of under-18 conceptions have decreased in recent years and are now at their lowest level for twenty years. However, with a rate of 40.5 per thousand women aged under 18 for England for 2008, the rate is still high when compared to other Western European countries.

The overall decrease in the conception rate masks considerable variation at local level and in some areas the rate is rising. Progress needs to be maintained and improved in order to tackle the poor outcomes that teenage pregnancy can bring. The key contribution that the NHS can make is to provide young people with accessible and user-friendly contraception services, which can deliver better outcomes for young people and which can also lead to cost savings for the NHS through avoiding additional spending on maternity and termination of pregnancy services.

The latest provisional figures from the Office for National Statistics – for Q2 of 2009, broken down by local authority area – can be accessed at the following web address: [www.statistics.gov.uk/statbase/product.asp?vlnk=15055](http://www.statistics.gov.uk/statbase/product.asp?vlnk=15055)

## Other existing commitments

### **Guaranteed access to a Genito Urinary Medicine (GUM) clinic within 48 hours of contacting a service**

The latest available data for September 2010 shows that the operational standards continued to be met with 99.4 percent of first appointments offered to patients within 48 hours and 88.4 percent of patients seen within 48 hours.

### **A maximum two-week standard for Rapid Chest Pain Clinics**

During Q2, 99.9 percent of patients referred to a Rapid Access Chest Pain Clinic were seen within two weeks of referral by a GP, the same as Q1.

### **Thrombolysis 'call to needle' of at least 68 percent within 60 minutes, where Thrombolysis is the preferred local treatment for heart attack**

At Q2, the percentage of heart attack patients treated with Thrombolysis within 60 minutes of calling for help was 65 percent, this compares with 68 percent at Q1.

Thrombolysis is no longer the main treatment for heart attack in England. Primary angioplasty services are now available for over two thirds of the population. The remainder continues to receive thrombolysis but, typically, this is in more rural areas where ambulance journey times to patients take longer. These patients will have longer delays to treatment because of geography and this is reflected in the below target performance. The percentage of eligible patients with acute myocardial infarction who received primary Percutaneous Coronary Intervention within 150 minutes of calling for professional help was 82 percent.

### **All patients who have operations cancelled for non-clinical reasons to be offered another binding date within 28 days, or the patient's treatment to be funded at the time and hospital of the patient's choice**

At Q2 97.3 percent of patients whose operations were cancelled for non-clinical reasons were offered another binding date within 28 days.

### **Deliver 7,500 new cases of psychosis served by early intervention teams per year**

Over the first six months to September 2010, 5,087 new cases of psychosis were being treated. This represent 68% of the full year plans – 7,500 – an improvement over the same period last year (62%).

### **All patients who need them to have access to crisis services, with delivery of 100,000 new crisis resolution home treatment episodes per year**

At the end of Q2 there were 67,129 home treatment episodes carried out to 57,190 patients who would otherwise have been admitted in hospitals. This represents 67% of the yearly plans – 100,000 home treatment episodes – slightly higher than the same quarter last year (63%).

FINANCIAL ANNEXES

ANNEX 1: NORTH EAST SHA

SHA and PCT name	2007/8 Annual Accounts Surplus/ (Deficit) £000s	2008/9 Annual Accounts Surplus/ (Deficit) £000s	2009/10 Annual Accounts Surplus/ (Deficit) £000s	2010/11 Q2 Forecast Outturn Surplus/ (Deficit) £000s	2010/11 Q2 Forecast Outturn Revenue Resource Limit (RRL) £000s	2010/11 Q2 Forecast Outturn Surplus/ (Deficit) as % RRL
COUNTY DURHAM PCT	981	918	1,020	1,000	1,001,617	0.1%
DARLINGTON PCT	101	301	301	300	184,065	0.2%
GATESHEAD PCT	297	146	504	237	394,351	0.1%
HARTLEPOOL PCT	212	126	125	100	183,646	0.1%
MIDDLESBROUGH PCT	341	633	278	600	302,039	0.2%
NEWCASTLE PCT	1,082	4,616	945	1,500	527,061	0.3%
NORTH EAST SHA	85,826	99,407	72,036	62,998	350,206	18.0%
NORTH TYNESIDE PCT	178	563	475	250	383,309	0.1%
NORTHUMBERLAND CARE PCT	373	443	220	250	558,774	0.0%
REDCAR AND CLEVELAND PCT	1,352	380	513	150	266,117	0.1%
SOUTH TYNESIDE PCT	719	592	1,819	50	320,782	0.0%
STOCKTON-ON-TEES TEACHING PCT	3,311	156	424	400	335,781	0.1%
SUNDERLAND TEACHING PCT	1,190	388	845	752	552,775	0.1%
<b>NORTH EAST TOTAL SHA/ PCT SECTOR</b>	<b>95,963</b>	<b>108,669</b>	<b>79,505</b>	<b>68,587</b>	<b>5,360,523</b>	<b>1.3%</b>

Trust name	2007/8 Annual Accounts Surplus/ (Deficit) £000s	2008/9 Annual Accounts Surplus/ (Deficit) £000s	2009/10 Annual Accounts Surplus/ (Operating Deficit) £000s	2010/11 Q2 Forecast Outturn Surplus/ (Operating Deficit) £000s	2010/11 Q2 Forecast Outturn Turnover £000s	2010/11 Q2 Forecast Outturn Surplus/ (Operating Deficit) as % Turnover
NORTH EAST AMBULANCE SERVICE NHS TRUST	350	2,249	4,736	3,413	106,502	3.2%
NORTH TEES AND HARTLEPOOL NHS TRUST (1)	10,061	n/a	n/a	n/a	n/a	n/a
NORTHUMBERLAND, TYNE AND WEAR NHS TRUST (2)	3,498	3,852	5,296	n/a	n/a	n/a
SOUTH TEES HOSPITALS NHS TRUST (3)	17,280	10,445	131	n/a	n/a	n/a
TEES, ESK AND WEAR VALLEYS NHS TRUST (4)	2,104	483	n/a	n/a	n/a	n/a
<b>NORTH EAST TOTAL TRUST SECTOR</b>	<b>33,293</b>	<b>17,029</b>	<b>10,163</b>	<b>3,413</b>	<b>106,502</b>	<b>3.2%</b>

For FTs the forecast position is only for the time when the organisation was an NHS trust

1 North Tees and Hartlepool NHS Trust achieved Foundation Trust status on 1st December 2007.

2 Northumberland, Tyne and Wear NHS Trust achieved Foundation Trust status on 1st December 2009.

3 South Tees Hospitals NHS Trust achieved Foundation Trust status on 1st May 2009.

4 Tees, Esk and Wear Valleys NHS Trust achieved Foundation Trust status on 1st July 2008.

**Note:** SHA and PCT turnover equals the Revenue Resource Limit (RRL) they are allocated. Trust turnover is all the income they receive including income from PCTs. Trust income should therefore be excluded from any aggregation of SHA economy turnover to avoid double counting resources.



SHA and PCT name	2007/8 Annual Accounts Surplus/ (Deficit) £000s	2008/9 Annual Accounts Surplus/ (Deficit) £000s	2009/10 Annual Accounts Surplus/ (Deficit) £000s	2010/11 Q2 Forecast Outturn Surplus/ (Deficit) £000s	2010/11 Q2 Forecast Outturn Revenue Resource Limit (RRL) £000s	2010/11 Q2 Forecast Outturn Surplus/ (Deficit) as % RRL
ASHTON, LEIGH AND WIGAN PCT	1,641	2,495	640	2,700	575,127	0.5%
BLACKBURN WITH DARWEN TEACHING CARE TRUST PLUS PCT (1)	4,753	2,048	717	1,364	288,172	0.5%
BLACKPOOL PCT	2,703	3,193	2,532	1,391	303,735	0.5%
BOLTON PCT	988	992	996	1,000	488,677	0.2%
BURY PCT	98	41	413	250	317,589	0.1%
CENTRAL AND EASTERN CHESHIRE PCT	1,007	336	1,007	1,007	715,253	0.1%
CENTRAL LANCASHIRE PCT	6,172	8,558	3,030	3,630	774,671	0.5%
CUMBRIA TEACHING PCT	530	233	229	(11,000)	846,021	(1.3%)
EAST LANCASHIRE TEACHING PCT	9,901	2,464	1,021	3,320	695,997	0.5%
HALTON AND ST HELENS PCT	167	420	295	500	614,037	0.1%
HEYWOOD, MIDDLETON AND ROCHDALE PCT	4,845	3,051	579	1,891	398,421	0.5%
KNOWSLEY PCT	1,726	4,819	576	1,606	338,820	0.5%
LIVERPOOL PCT	10,644	6,429	5,287	4,768	1,021,090	0.5%
MANCHESTER PCT	1,147	687	481	347	1,046,870	0.0%
NORTH LANCASHIRE TEACHING PCT	418	2,051	1,565	2,200	572,956	0.4%
NORTH WEST SHA	206,829	245,142	157,339	157,456	878,981	17.9%
OLDHAM PCT	1,441	1,528	1,381	0	425,764	0.0%
SALFORD PCT	973	1,991	993	2,246	484,741	0.5%
SEFTON PCT	605	287	498	2,500	529,560	0.5%
STOCKPORT PCT	1,735	238	231	74	478,384	0.0%
TAMESIDE AND GLOSSOP PCT	1,931	1,980	980	1,000	427,849	0.2%
TRAFFORD PCT	1,054	133	534	3,750	377,889	1.0%
WARRINGTON PCT	1,603	557	222	0	320,105	0.0%
WESTERN CHESHIRE PCT	900	1,598	1,279	1,000	427,926	0.2%
WIRRAL PCT	9,670	3,310	2,047	2,000	627,365	0.3%
<b>NORTH WEST TOTAL SHA/PCT SECTOR</b>	<b>273,481</b>	<b>294,581</b>	<b>184,872</b>	<b>185,000</b>	<b>13,975,600</b>	<b>1.3%</b>

Trust name	2007/8 Annual Accounts Surplus/ (Deficit) £000s	2008/9 Annual Accounts Surplus/ (Deficit) £000s	2009/10 Annual Accounts Surplus/ (Operating Deficit) £000s	2010/11 Q2 Forecast Outturn Surplus/ (Operating Deficit) £000s	2010/11 Q2 Forecast Outturn Turnover £000s	2010/11 Q2 Forecast Outturn Surplus/ (Operating Deficit) as % Turnover
5 BOROUGH PARTNERSHIP NHS TRUST (2)	958	1,482	2,210	n/a	n/a	n/a
BLACKPOOL, FYLDE AND WYRE HOSPITALS NHS TRUST (3)	3,828	n/a	n/a	n/a	n/a	n/a
BOLTON HOSPITALS NHS TRUST (4)	1,735	(2,351)	n/a	n/a	n/a	n/a
BOLTON, SALFORD AND TRAFFORD MENTAL HEALTH NHS TRUST (5)	200	n/a	n/a	n/a	n/a	n/a
CALDERSTONES NHS TRUST (6)	185	1,520	n/a	n/a	n/a	n/a
CENTRAL MANCHESTER AND MANCHESTER CHILDREN'S UNIVERSITY HOSPITALS NHS TRUST (7)	336	4,715	n/a	n/a	n/a	n/a
CHESHIRE AND WIRRAL PARTNERSHIP NHS TRUST (8)	129	n/a	n/a	n/a	n/a	n/a
EAST CHESHIRE NHS TRUST	885	522	3,926	251	111,522	0.2%
EAST LANCASHIRE HOSPITALS NHS TRUST	223	133	287	300	342,108	0.1%
LANCASHIRE CARE NHS TRUST (9)	1,187	n/a	n/a	n/a	n/a	n/a
LIVERPOOL HEART AND CHEST HOSPITAL NHS TRUST (10)	27	4,337	1,827	n/a	n/a	n/a
MANCHESTER MENTAL HEALTH AND SOCIAL CARE NHS TRUST	455	521	532	475	90,096	0.5%
MERSEY CARE NHS TRUST	500	500	3,000	3,027	196,123	1.5%
NORTH CHESHIRE HOSPITALS NHS TRUST (11)	6,991	1,060	n/a	n/a	n/a	n/a
NORTH CUMBRIA MENTAL HEALTH AND LEARNING DISABILITIES NHS TRUST (12)	1,562	n/a	n/a	n/a	n/a	n/a
NORTH CUMBRIA UNIVERSITY HOSPITALS NHS TRUST	51	993	327	1,500	211,009	0.7%
NORTH WEST AMBULANCE SERVICE NHS TRUST	111	840	1,041	1,250	251,806	0.5%
PENNINE ACUTE HOSPITALS NHS TRUST	9,472	48	620	2,953	558,923	0.5%
PENNINE CARE NHS TRUST (13)	612	388	n/a	n/a	n/a	n/a
ROYAL LIVERPOOL BROADGREEN UNIVERSITY HOSPITALS NHS TRUST	1,813	2,781	4,021	4,077	403,176	1.0%
ROYAL LIVERPOOL CHILDREN'S NHS TRUST (14)	296	301	n/a	n/a	n/a	n/a
SOUTHPORT AND ORMSKIRK HOSPITAL NHS TRUST	2,823	802	500	803	150,737	0.5%
ST HELENS AND KNOWSLEY TEACHING HOSPITALS NHS TRUST	219	(22,687)	225	120	254,033	0.0%
TAMESIDE AND GLOSSOP ACUTE SERVICES NHS TRUST (15)	758	n/a	n/a	n/a	n/a	n/a
THE MID CHESHIRE HOSPITALS NHS TRUST (16)	2,258	n/a	n/a	n/a	n/a	n/a
TRAFFORD HEALTHCARE NHS TRUST	524	(2,186)	(6,048)	1,489	94,113	1.6%
UNIVERSITY HOSPITALS OF MORECAMBE BAY NHS TRUST	2,884	1,889	2,126	214	127,555	0.2%
WALTON CENTRE FOR NEUROLOGY AND NEUROSURGERY NHS TRUST (17)	500	2,812	424	n/a	n/a	n/a
WIRRAL HOSPITAL NHS TRUST (18)	48	n/a	n/a	n/a	n/a	n/a
WRIGHTINGTON, WIGAN AND LEIGH NHS TRUST (19)	2,235	(13,002)	n/a	n/a	n/a	n/a
<b>NORTH WEST TOTAL TRUST SECTOR</b>	<b>43,805</b>	<b>(14,582)</b>	<b>15,018</b>	<b>16,459</b>	<b>2,791,201</b>	<b>0.6%</b>

**For FTs the forecast position is only for the time when the organisation was an NHS trust**

- 1 Blackburn with Darwen Teaching Care Trust Plus PCT was formerly Blackburn with Darwen PCT pre-April 2010.
- 2 5 Boroughs Partnership NHS Trust achieved Foundation Trust status on 1st March 2010.
- 3 Blackpool, Fylde and Wyre Hospitals NHS Trust achieved Foundation Trust status on 1st December 2007.
- 4 Bolton Hospitals NHS Trust achieved Foundation Trust status on 1st October 2008.
- 5 Bolton, Salford and Trafford Mental Health NHS Trust achieved Foundation Trust status on 1st February 2008.
- 6 Calderstones NHS Trust achieved Foundation Trust status on 1st April 2009.
- 7 Central Manchester and Manchester Children's University Hospitals NHS Trust achieved Foundation Trust status on 1st January 2009.
- 8 Cheshire and Wirral Partnership NHS Trust achieved Foundation Trust status on 1st July 2007.
- 9 Lancashire Care NHS Trust achieved Foundation Trust status on 1st December 2007.
- 10 Liverpool Heart and Chest Hospital NHS Trust achieved Foundation Trust status on 1st December 2009.
- 11 North Cheshire Hospitals NHS Trust achieved Foundation Trust status on 1st December 2008.
- 12 North Cumbria Mental Health and Learning Disabilities NHS Trust achieved Foundation Trust status on 1st October 2007.
- 13 Pennine Care NHS Trust achieved Foundation Trust status on 1st July 2008.
- 14 Royal Liverpool Children's NHS Trust achieved Foundation Trust status on 1st August 2008.
- 15 Tameside and Glossop Acute Services NHS Trust achieved Foundation Trust status on 1st February 2008.
- 16 The Mid Cheshire Hospitals NHS Trust achieved Foundation Trust status on 1st April 2008.
- 17 Walton Centre for Neurology and Neurosurgery NHS Trust achieved Foundation Trust status on 1st August 2009.
- 18 Wirral Hospital NHS Trust achieved Foundation Trust status on 1st July 2007.
- 19 Wrightington, Wigan and Leigh NHS Trust achieved Foundation Trust status on 1st December 2008.

In addition to the operating deficits forecast in Quarter 2, 2010/11 shown above, the following organisation(s) also forecast a technical deficit (£m) in the same period. A technical deficit is a deficit arising due to:

- a) impairments including those attributable to the transition to MEA (Modern Equivalent Assets) valuation, or
- b) incurring additional non-cash revenue charges associated with bringing PFI assets on the balance sheet due to the introduction of IFRS accounting in 2009/10. This is a non-cash issue that is not recognised for NHS budgeting purposes.

East Lancashire Hospitals NHS Trust (£10m)  
North Cumbria University Hospitals NHS Trust (£6m)  
Pennine Acute Hospitals NHS Trust (£8m)  
St Helens and Knowsley Teaching Hospitals NHS Trust (£25m)

Note: SHA and PCT turnover equals the Revenue Resource Limit (RRL) they are allocated. Trust turnover is all the income they receive including income from PCTs. Trust income should therefore be excluded from any aggregation of SHA economy turnover to avoid double counting resources.

ANNEX 3: YORKSHIRE AND HUMBER SHA

SHA and PCT name	2007/8 Annual Accounts Surplus/ (Deficit) £000s	2008/9 Annual Accounts Surplus/ (Deficit) £000s	2009/10 Annual Accounts Surplus/ (Deficit) £000s	2010/11 Q2 Forecast Outturn Surplus/ (Deficit) £000s	2010/11 Q2 Forecast Outturn Revenue Resource Limit (RRL) £000s	2010/11 Q2 Forecast Outturn Surplus/ (Deficit) as % RRL
BARNSELY PCT	2,650	2,510	3,461	3,400	473,208	0.7%
BRADFORD AND AIREDALE TEACHING PCT	2,875	3,457	7,550	6,800	912,472	0.7%
CALDERDALE PCT	1,338	2,000	2,679	6,800	344,759	2.0%
DONCASTER PCT	3,643	2,760	4,177	2,700	569,853	0.5%
EAST RIDING OF YORKSHIRE PCT	2,765	1,997	3,684	7,200	489,814	1.5%
HULL TEACHING PCT	8,339	6,548	3,820	3,800	517,026	0.7%
KIRKLEES PCT	4,405	2,787	2,928	9,900	667,102	1.5%
LEEDS PCT	3,312	5,150	5,002	20,100	1,323,603	1.5%
NORTH EAST LINCOLNSHIRE CARE TRUST PLUS (1)	1,052	1,146	2,222	2,200	289,001	0.8%
NORTH LINCOLNSHIRE PCT	1,196	1,107	1,249	3,900	264,222	1.5%
NORTH YORKSHIRE AND YORK PCT	(18,226)	2,401	317	0	1,205,596	0.0%
ROTHERHAM PCT	2,561	1,597	2,042	2,200	462,120	0.5%
SHEFFIELD PCT	1,660	1,712	4,479	0	985,251	0.0%
WAKEFIELD DISTRICT PCT	2,223	2,580	7,388	3,100	651,417	0.5%
YORKSHIRE AND THE HUMBER SHA	223,198	178,249	133,982	71,051	656,423	10.8%
<b>YORKSHIRE AND HUMBER TOTAL SHA/PCT SECTOR</b>	<b>242,991</b>	<b>216,001</b>	<b>184,980</b>	<b>143,151</b>	<b>9,811,867</b>	<b>1.5%</b>

Trust name	2007/8 Annual Accounts Surplus/ (Deficit) £000s	2008/9 Annual Accounts Surplus/ (Deficit) £000s	2009/10 Annual Accounts Surplus/ (Operating Deficit) £000s	2010/11 Q2 Forecast Outturn Surplus/ (Operating Deficit) £000s	2010/11 Q2 Forecast Outturn Turnover £000s	2010/11 Q2 Forecast Outturn Surplus/ (Operating Deficit) as % Turnover
AIREDALE NHS TRUST (2)	522	759	605	49	21,005	0.2%
BRADFORD DISTRICT CARE TRUST	550	546	103	100	120,001	0.1%
DONCASTER AND SOUTH HUMBER HEALTHCARE NHS TRUST (3)	418	n/a	n/a	n/a	n/a	n/a
HULL AND EAST YORKSHIRE HOSPITALS NHS TRUST	6,755	5,020	7,601	4,800	481,812	1.0%
HUMBER MENTAL HEALTH TEACHING NHS TRUST (4)	353	1,376	1,351	n/a	n/a	n/a
LEEDS MENTAL HEALTH TEACHING NHS TRUST (5)	541	n/a	n/a	n/a	n/a	n/a
LEEDS TEACHING HOSPITALS NHS TRUST	3,093	471	963	0	944,848	0.0%
MID YORKSHIRE HOSPITALS NHS TRUST	767	32,706	871	0	415,546	0.0%
NORTHERN LINCOLNSHIRE AND GOOLE HOSPITALS NHS TRUST (6)	69	n/a	n/a	n/a	n/a	n/a
SCARBOROUGH AND NORTH EAST YORKSHIRE HEALTHCARE NHS TRUST	98	1,873	1,914	1,900	116,234	1.6%
SHEFFIELD CARE TRUST (7)	388	80	n/a	n/a	n/a	n/a
SOUTH WEST YORKSHIRE MENTAL HEALTH NHS TRUST (8)	2,291	1,015	569	n/a	n/a	n/a
YORKSHIRE AMBULANCE SERVICE NHS TRUST	251	151	518	0	198,464	0.0%
<b>YORKSHIRE AND HUMBER TOTAL TRUST SECTOR</b>	<b>16,096</b>	<b>43,997</b>	<b>14,495</b>	<b>6,849</b>	<b>2,297,910</b>	<b>0.3%</b>

**For FTs the forecast position is only for the time when the organisation was an NHS trust**

- 1 North East Lincolnshire Care Trust Plus was formed following the dissolution of North East Lincolnshire PCT on 1st September 2007.
- 2 Airedale NHS Trust achieved Foundation Trust status on 1st June 2010.
- 3 Doncaster and South Humber Healthcare NHS Trust achieved Foundation Trust status on 1st July 2007.
- 4 Humber Mental Health Teaching NHS Trust achieved Foundation Trust status on 1st February 2010.
- 5 Leeds Mental Health Teaching NHS Trust achieved Foundation Trust status on 1st August 2007.
- 6 Northern Lincolnshire and Goole Hospitals NHS Trust achieved Foundation Trust status on 1st May 2007.
- 7 Sheffield Care Trust achieved Foundation Trust status on 1st July 2008.
- 8 South West Yorkshire Mental Health NHS Trust achieved Foundation Trust status on 1st May 2009.

In addition to the operating deficits forecast in Quarter 2, 2010/11 shown above, the following organisation(s) also forecast a technical deficit (£m) in the same period. A technical deficit is a deficit arising due to:

- a) impairments including those attributable to the transition to MEA (Modern Equivalent Assets) valuation, or
- b) incurring additional non-cash revenue charges associated with bringing PFI assets on the balance sheet due to the introduction of IFRS accounting in 2009/10. This is a non-cash issue that is not recognised for NHS budgeting purposes.

Hull and East Yorkshire Hospitals NHS Trust (£2m)  
 Leeds Teaching Hospitals NHS Trust (£2m)  
 Mid Yorkshire Hospitals NHS Trust (£66m)  
 Scarborough and North East Yorkshire Healthcare NHS Trust (£1m)

**Note:** SHA and PCT turnover equals the Revenue Resource Limit (RRL) they are allocated. Trust turnover is all the income they receive including income from PCTs. Trust income should therefore be excluded from any aggregation of SHA economy turnover to avoid double counting resources.

## ANNEX 4: EAST MIDLANDS SHA

SHA and PCT name	2007/8 Annual Accounts Surplus/ (Deficit) £000s	2008/9 Annual Accounts Surplus/ (Deficit) £000s	2009/10 Annual Accounts Surplus/ (Deficit) £000s	2010/11 Q2 Forecast Outturn Surplus/ (Deficit) £000s	2010/11 Q2 Forecast Outturn Revenue Resource Limit (RRL) £000s	2010/11 Q2 Forecast Outturn Surplus/ (Deficit) as % RRL
BASSETLAW PCT	2,663	2,689	1,434	1,874	192,864	1.0%
DERBY CITY PCT	2,032	2,303	650	0	453,601	0.0%
DERBYSHIRE COUNTY PCT	4,122	4,761	1,873	11,000	1,177,262	0.9%
EAST MIDLANDS SHA	55,151	69,833	59,092	26,312	440,232	6.0%
LEICESTER CITY PCT	2,206	2,244	241	5,155	551,805	0.9%
LEICESTERSHIRE COUNTY AND RUTLAND PCT	199	1,049	1,148	8,756	939,237	0.9%
LINCOLNSHIRE TEACHING PCT	6,998	7,011	7,264	11,277	1,185,737	1.0%
NORTHAMPTONSHIRE TEACHING PCT	4,159	4,387	4,642	10,526	1,041,211	1.0%
NOTTINGHAM CITY PCT	6,422	2,283	2,448	5,100	556,030	0.9%
NOTTINGHAMSHIRE COUNTY TEACHING PCT	9,820	10,003	4,514	5,000	1,066,526	0.5%
<b>EAST MIDLANDS TOTAL SHA/PCT SECTOR</b>	<b>93,772</b>	<b>106,563</b>	<b>83,306</b>	<b>85,000</b>	<b>7,604,505</b>	<b>1.1%</b>

Trust name	2007/8 Annual Accounts Surplus/ (Deficit) £000s	2008/9 Annual Accounts Surplus/ (Deficit) £000s	2009/10 Annual Accounts Surplus/ (Operating Deficit) £000s	2010/11 Q2 Forecast Outturn Surplus/ (Operating Deficit) £000s	2010/11 Q2 Forecast Outturn Turnover £000s	2010/11 Q2 Forecast Outturn Surplus/ (Operating Deficit) as % Turnover
DERBYSHIRE MENTAL HEALTH SERVICES NHS TRUST	518	990	1,014	1,100	106,516	1.0%
EAST MIDLANDS AMBULANCE SERVICE NHS TRUST	298	1,564	2,016	250	158,058	0.2%
KETTERING GENERAL HOSPITAL NHS TRUST (1)	2,705	3,444	n/a	n/a	n/a	n/a
LEICESTERSHIRE PARTNERSHIP NHS TRUST	303	683	1,732	1,731	137,396	1.3%
LINCOLNSHIRE PARTNERSHIP NHS TRUST (2)	922	n/a	n/a	n/a	n/a	n/a
NORTHAMPTON GENERAL HOSPITAL NHS TRUST	1,834	2,100	2,081	2,000	233,816	0.9%
NORTHAMPTONSHIRE HEALTHCARE NHS TRUST (3)	2,438	342	29	n/a	n/a	n/a
NOTTINGHAM UNIVERSITY HOSPITALS NHS TRUST	7,069	5,557	7,256	5,193	737,280	0.7%
NOTTINGHAMSHIRE HEALTHCARE NHS TRUST	7,458	3,905	2,387	6,005	304,708	2.0%
UNITED LINCOLNSHIRE HOSPITALS NHS TRUST	12,488	366	1,282	(13,803)	388,780	(3.6%)
UNIVERSITY HOSPITALS OF LEICESTER NHS TRUST	577	3,018	51	1,000	693,498	0.1%
<b>EAST MIDLANDS TOTAL TRUST SECTOR</b>	<b>36,610</b>	<b>21,969</b>	<b>17,848</b>	<b>3,476</b>	<b>2,760,052</b>	<b>0.1%</b>

For FTs the forecast position is only for the time when the organisation was an NHS trust

- 1 Kettering General Hospital NHS Trust achieved Foundation Trust status on 1st November 2008.
- 2 Lincolnshire Partnership NHS Trust achieved Foundation Trust status on 1st October 2007.
- 3 Northamptonshire Healthcare NHS Trust achieved Foundation Trust status on 1st May 2009.

In addition to the operating deficits forecast in Quarter 2, 2010/11 shown above, the following organisation(s) also forecast a technical deficit (£m) in the same period. A technical deficit is a deficit arising due to:

- a) impairments including those attributable to the transition to MEA (Modern Equivalent Assets) valuation, or
- b) incurring additional non-cash revenue charges associated with bringing PFI assets on the balance sheet due to the introduction of IFRS accounting in 2009/10. This is a non-cash issue that is not recognised for NHS budgeting purposes.

Derbyshire Mental Health Services NHS Trust (£4m)  
East Midlands Ambulance Service NHS Trust (£0.8m)  
Leicestershire Partnership NHS Trust (£2m)  
Nottingham University Hospitals NHS Trust (£12m)  
Nottinghamshire Healthcare NHS Trust (£13m)  
University Hospitals of Leicester NHS Trust (£0.4m)

**Note:** SHA and PCT turnover equals the Revenue Resource Limit (RRL) they are allocated. Trust turnover is all the income they receive including income from PCTs. Trust income should therefore be excluded from any aggregation of SHA economy turnover to avoid double counting resources.

## ANNEX 5: WEST MIDLANDS SHA

SHA and PCT name	2007/8 Annual Accounts Surplus/ (Deficit) £000s	2008/9 Annual Accounts Surplus/ (Deficit) £000s	2009/10 Annual Accounts Surplus/ (Deficit) £000s	2010/11 Q2 Forecast Outturn Surplus/ (Deficit) £000s	2010/11 Q2 Forecast Revenue Resource Limit (RRL) £000s	2010/11 Q2 Forecast Outturn Surplus/ (Deficit) as % RRL
BIRMINGHAM EAST AND NORTH PCT	3,245	1,922	2,453	500	741,038	0.1%
COVENTRY TEACHING PCT	3,894	4,983	4,644	5,747	589,895	1.0%
DUDLEY PCT	2,084	2,055	362	548	509,390	0.1%
HEART OF BIRMINGHAM TEACHING PCT	9,685	9,683	7,615	9,550	600,037	1.6%
HEREFORDSHIRE PCT	475	475	778	0	285,645	0.0%
NORTH STAFFORDSHIRE PCT	1,058	1,999	515	1,000	347,957	0.3%
SANDWELL PCT	1,516	7,020	89	0	588,915	0.0%
SHROPSHIRE COUNTY PCT	585	854	490	783	463,280	0.2%
SOLIHULL CARE TRUST	805	793	16	0	328,612	0.0%
SOUTH BIRMINGHAM PCT	6,500	6,505	4,700	1,600	658,273	0.2%
SOUTH STAFFORDSHIRE PCT	4,606	4,676	2,200	750	939,564	0.1%
STOKE ON TRENT PCT	1,934	4,304	2,588	2,500	521,171	0.5%
TELFORD AND WREKIN PCT	6,977	7,247	4,522	500	268,170	0.2%
WALSALL TEACHING PCT	8,963	11,602	6,022	5,000	480,375	1.0%
WARWICKSHIRE PCT	435	321	594	220	825,705	0.0%
WEST MIDLANDS SHA	33,500	6,497	19,732	27,640	561,041	4.9%
WOLVERHAMPTON CITY PCT	13,833	24,874	19,365	15,000	468,985	3.2%
WORCESTERSHIRE PCT	1,885	4,865	3,519	1,000	858,799	0.1%
<b>WEST MIDLANDS TOTAL SHA/PCT SECTOR</b>	<b>101,980</b>	<b>100,675</b>	<b>80,204</b>	<b>72,338</b>	<b>10,036,852</b>	<b>0.7%</b>

Trust name	2007/8 Annual Accounts Surplus/ (Deficit) £000s	2008/9 Annual Accounts Surplus/ (Deficit) £000s	2009/10 Annual Accounts Surplus/ (Operating Deficit) £000s	2010/11 Q2 Forecast Outturn Surplus/ (Operating Deficit) £000s	2010/11 Q2 Forecast Outturn Turnover £000s	2010/11 Q2 Forecast Outturn Surplus/ (Operating Deficit) as % Turnover
BIRMINGHAM AND SOLIHULL MENTAL HEALTH NHS TRUST (1)	3,900	1,206	n/a	n/a	n/a	n/a
BIRMINGHAM WOMEN'S HEALTH CARE NHS TRUST (2)	707	n/a	n/a	n/a	n/a	n/a
BURTON HOSPITALS NHS TRUST (3)	40	2,666	n/a	n/a	n/a	n/a
COVENTRY AND WARWICKSHIRE PARTNERSHIP NHS TRUST (4)	264	1,863	3,690	3,139	146,842	2.1%
DUDLEY AND WALSALL MENTAL HEALTH PARTNERSHIP NHS TRUST	n/a	202	376	850	67,746	1.3%
DUDLEY GROUP OF HOSPITALS NHS TRUST (5)	10,524	3,886	n/a	n/a	n/a	n/a
GEORGE ELIOT HOSPITAL NHS TRUST	1,382	964	1,164	1,215	108,365	1.1%
HEREFORD HOSPITALS NHS TRUST	1,126	544	1,165	0	120,527	0.0%
MID STAFFORDSHIRE GENERAL HOSPITALS NHS TRUST (6)	253	n/a	n/a	n/a	n/a	n/a
NORTH STAFFORDSHIRE COMBINED HEALTHCARE NHS TRUST	214	256	449	1,030	85,277	1.2%
ROBERT JONES AND AGNES HUNT ORTHOPAEDIC HOSPITAL NHS TRUST	1,146	999	2,054	1,306	79,154	1.6%
ROYAL WOLVERHAMPTON HOSPITALS NHS TRUST	8,335	6,913	8,035	8,103	298,363	2.7%
SANDWELL & WEST BIRMINGHAM HOSPITALS NHS TRUST	6,524	2,547	7,260	2,038	385,024	0.5%
SANDWELL MENTAL HEALTH NHS AND SOCIAL CARE TRUST (7)	58	60	n/a	n/a	n/a	n/a
SHREWSBURY AND TELFORD HOSPITAL NHS TRUST	4,102	4,127	712	225	271,411	0.1%
SOUTH WARWICKSHIRE GENERAL HOSPITALS NHS TRUST (8)	2,412	6,842	5,581	n/a	n/a	n/a
UNIVERSITY HOSPITAL OF NORTH STAFFORDSHIRE NHS TRUST	3,990	3,008	5,644	8,100	422,447	1.9%
UNIVERSITY HOSPITALS COVENTRY AND WARWICKSHIRE NHS TRUST	201	4,825	10,234	6,547	468,817	1.4%
WALSALL HOSPITALS NHS TRUST	644	353	1,998	250	171,085	0.1%
WEST MIDLANDS AMBULANCE SERVICE NHS TRUST	235	156	255	35	185,302	0.0%
WORCESTERSHIRE ACUTE HOSPITALS NHS TRUST	5,193	5,833	3,135	2,376	310,560	0.8%
WORCESTERSHIRE MENTAL HEALTH PARTNERSHIP NHS TRUST	61	2	700	699	70,686	1.0%
<b>WEST MIDLANDS TOTAL TRUST SECTOR</b>	<b>51,311</b>	<b>47,252</b>	<b>52,452</b>	<b>35,913</b>	<b>3,191,606</b>	<b>1.1%</b>

## For FTs the forecast position is only for the time when the organisation was an NHS trust

- 1 Birmingham and Solihull Mental Health NHS Trust achieved Foundation Trust status on 1st July 2008.
- 2 Birmingham Women's Health Care NHS Trust achieved Foundation Trust status on 1st February 2008.
- 3 Burton Hospitals NHS Trust achieved Foundation Trust status on 1st November 2008.
- 4 Coventry and Warwickshire Partnership NHS Trust was formed from the Mental Health elements of Rugby PCT, Coventry Teaching PCT, North Warwickshire PCT and South Warwickshire PCT.
- 5 Dudley Group of Hospitals NHS Trust achieved Foundation Trust status on 1st October 2008.
- 6 Mid Staffordshire General Hospitals NHS Trust achieved Foundation Trust status on 1st February 2008.
- 7 Sandwell Mental Health and Social Care NHS Trust achieved Foundation Trust status on 1st February 2009.
- 8 South Warwickshire General Hospitals NHS Trust achieved Foundation Trust status on 1st March 2010.

In addition to the operating deficits forecast in Quarter 2, 2010/11 shown above, the following organisation(s) also forecast a technical deficit (£m) in the same period. A technical deficit is a deficit arising due to:

- a) impairments including those attributable to the transition to MEA (Modern Equivalent Assets) valuation, or
- b) incurring additional non-cash revenue charges associated with bringing PFI assets on the balance sheet due to the introduction of IFRS accounting in 2009/10. This is a non-cash issue that is not recognised for NHS budgeting purposes.

Coventry and Warwickshire Partnership NHS Trust (£2m)  
North Staffordshire Combined Healthcare NHS Trust (£2m)  
Sandwell & West Birmingham Hospitals NHS Trust (£3m)  
Shrewsbury and Telford Hospital NHS Trust (£0.3m)  
University Hospital of North Staffordshire NHS Trust (£5m)  
University Hospitals Coventry and Warwickshire NHS Trust (£10m)  
Walsall Hospitals NHS Trust (£17m)  
Worcestershire Acute Hospitals NHS Trust (£0.5m)

Note: SHA and PCT turnover equals the Revenue Resource Limit (RRL) they are allocated. Trust turnover is all the income they receive including income from PCTs. Trust income should therefore be excluded from any aggregation of SHA economy turnover to avoid double counting resources.

## ANNEX 6: EAST OF ENGLAND SHA

SHA and PCT name	2007/8 Annual Accounts Surplus/ (Deficit) £000s	2008/9 Annual Accounts Surplus/ (Deficit) £000s	2009/10 Annual Accounts Surplus/ (Deficit) £000s	2010/11 Q2 Forecast Outturn Surplus/ (Deficit) £000s	2010/11 Q2 Forecast Outturn Revenue Resource Limit (RRL) £000s	2010/11 Q2 Forecast Outturn Surplus/ (Deficit) as % RRL
BEDFORDSHIRE PCT	133	330	236	500	617,755	0.1%
CAMBRIDGESHIRE PCT	752	760	501	367	861,823	0.0%
EAST AND NORTH HERTFORDSHIRE PCT	n/a	n/a	n/a	n/a	n/a	n/a
EAST OF ENGLAND SHA	32,683	124,757	135,389	94,887	681,114	13.9%
GREAT YARMOUTH AND WAVENEY PCT	2,408	230	352	1,500	403,822	0.4%
HERTFORDSHIRE PCT (1)	57	2,259	1,611	260	1,700,155	0.0%
LUTON PCT	3	492	400	500	314,189	0.2%
MID ESSEX PCT	2,803	940	1,007	1,000	530,537	0.2%
NORFOLK PCT	227	1,079	695	900	1,202,488	0.1%
NORTH EAST ESSEX PCT	189	1,348	2,993	1,000	551,743	0.2%
PETERBOROUGH PCT	9	2,896	(12,832)	(4,764)	283,866	(1.7%)
SOUTH EAST ESSEX PCT	25	852	2,014	850	553,428	0.2%
SOUTH WEST ESSEX PCT	19,351	688	1,614	0	666,150	0.0%
SUFFOLK PCT	49	1,315	2,578	1,500	908,370	0.2%
WEST ESSEX PCT	255	1,448	815	1,500	431,591	0.3%
WEST HERTFORDSHIRE PCT	n/a	n/a	n/a	n/a	n/a	n/a
<b>EAST OF ENGLAND TOTAL SHA/PCT SECTOR</b>	<b>58,944</b>	<b>139,394</b>	<b>137,373</b>	<b>100,000</b>	<b>9,707,031</b>	<b>1.0%</b>

Trust name	2007/8 Annual Accounts Surplus/ (Deficit) £000s	2008/9 Annual Accounts Surplus/ (Deficit) £000s	2009/10 Annual Accounts Surplus/ (Operating Deficit) £000s	2010/11 Q2 Forecast Outturn Surplus/ (Operating Deficit) £000s	2010/11 Q2 Forecast Outturn Turnover £000s	2010/11 Q2 Forecast Outturn Surplus/ (Operating Deficit) as % Turnover
BEDFORD HOSPITALS NHS TRUST	2,234	2,118	612	1,595	137,879	1.2%
BEDFORDSHIRE AND LUTON MENTAL HEALTH AND SOCIAL CARE PARTNERSHIP NHS TRUST	130	751	463	n/a	n/a	n/a
CAMBRIDGESHIRE AND PETERBOROUGH MENTAL HEALTH PARTNERSHIP NHS TRUST (2)	154	71	n/a	n/a	n/a	n/a
CAMBRIDGESHIRE COMMUNITY SERVICES NHS TRUST (3)	n/a	n/a	n/a	510	101,837	n/a
EAST AND NORTH HERTFORDSHIRE NHS TRUST	2,003	2,070	2,499	3,300	331,919	1.0%
EAST OF ENGLAND AMBULANCE SERVICE NHS TRUST	104	283	757	1,967	223,621	0.9%
ESSEX RIVERS HEALTHCARE NHS TRUST (4)	2,939	875	n/a	n/a	n/a	n/a
HERTFORDSHIRE PARTNERSHIP NHS TRUST (5)	(1,522)	n/a	n/a	n/a	n/a	n/a
HINCHINGBROOKE HEALTH CARE NHS TRUST	(16,037)	98	598	0	100,010	0.0%
MID ESSEX HOSPITAL SERVICES NHS TRUST	8,983	7,316	2,551	998	254,406	0.4%
NORFOLK AND NORWICH UNIVERSITY HOSPITALS NHS TRUST (6)	3,901	2,409	n/a	n/a	n/a	n/a
NORFOLK AND WAVENEY MENTAL HEALTH PARTNERSHIP NHS TRUST (7)	2,627	n/a	n/a	n/a	n/a	n/a
NORTH ESSEX MENTAL HEALTH PARTNERSHIP NHS TRUST (8)	510	n/a	n/a	n/a	n/a	n/a
SUFFOLK MENTAL HEALTH PARTNERSHIP NHS TRUST	1,264	1,504	1,513	797	87,134	0.9%
THE IPSWICH HOSPITAL NHS TRUST	5,037	4,580	3,351	3,672	227,902	1.6%
THE PRINCESS ALEXANDRA HOSPITAL NHS TRUST	4,534	3,222	511	500	180,778	0.3%
THE QUEEN ELIZABETH HOSPITAL KINGS LYNN NHS TRUST	4,565	6,158	4,510	8,339	171,926	4.9%
WEST HERTFORDSHIRE HOSPITALS NHS TRUST	2,495	4,405	5,699	8,100	257,426	3.1%
WEST SUFFOLK HOSPITALS NHS TRUST	2,588	4,600	6,273	2,400	152,341	1.6%
<b>EAST OF ENGLAND TOTAL TRUST SECTOR</b>	<b>26,509</b>	<b>40,460</b>	<b>29,337</b>	<b>32,178</b>	<b>2,227,179</b>	<b>1.4%</b>

## For FTs the forecast position is only for the time when the organisation was an NHS trust

- Hertfordshire PCT was formed by the merger of East and North Hertfordshire (5P3) and West Hertfordshire PCT (5P4) on 1st April 2010.
- Cambridgeshire and Peterborough Mental Health Partnership NHS Trust achieved Foundation Trust status on 1st June 2008.
- Cambridgeshire Community Services NHS Trust is a new trust formed on 1st April 2010.
- Essex Rivers Healthcare NHS Trust achieved Foundation Trust status on 1st May 2008.
- Hertfordshire Partnership NHS Trust achieved Foundation Trust status on 1st August 2007.
- Norfolk and Norwich University Hospitals NHS Trust achieved Foundation Trust status on 1st May 2008.
- Norfolk and Waveney Mental Health Partnership NHS Trust achieved Foundation Trust status on 1st February 2008.
- North Essex Mental Health Partnership NHS Trust achieved Foundation Trust status on 1st October 2007.

In addition to the operating deficits forecast in Quarter 2, 2010/11 shown above, the following organisation(s) also forecast a technical deficit (£m) in the same period. A technical deficit is a deficit arising due to:

- impairments including those attributable to the transition to MEA (Modern Equivalent Assets) valuation, or
- incurring additional non-cash revenue charges associated with bringing PFI assets on the balance sheet due to the introduction of IFRS accounting in 2009/10. This is a non-cash issue that is not recognised for NHS budgeting purposes.

East and North Hertfordshire NHS Trust (£0.1m)  
Mid Essex Hospital Services NHS Trust (£33m)  
Suffolk Mental Health Partnership NHS Trust (£7m)

Note: SHA and PCT turnover equals the Revenue Resource Limit (RRL) they are allocated. Trust turnover is all the income they receive including income from PCTs. Trust income should therefore be excluded from any aggregation of SHA economy turnover to avoid double counting resources.

SHA and PCT name	2007/8 Annual Accounts Surplus/ (Deficit) £000s	2008/9 Annual Accounts Surplus/ (Deficit) £000s	2009/10 Annual Accounts Surplus/ (Deficit) £000s	2010/11 Q2 Forecast Outturn Surplus/ (Deficit) £000s	2010/11 Q2 Forecast Outturn Resource Limit (RRL) £000s	2010/11 Q2 Forecast Outturn Surplus/ (Deficit) as % RRL
BARKING AND DAGENHAM PCT	20,753	18,439	3,377	3,184	337,351	0.9%
BARNET PCT	3,031	5,860	139	0	602,158	0.0%
BEXLEY CARE PCT	52	130	51	1,509	343,726	0.4%
BRENT TEACHING PCT	1,698	12,584	16,334	17,226	553,088	3.1%
BROMLEY PCT	49	188	249	4,902	504,088	1.0%
CAMDEN PCT	3,445	4,340	12	11,800	519,523	2.3%
CITY AND HACKNEY TEACHING PCT	9,339	100	9,346	5,235	533,146	1.0%
CROYDON PCT	2,600	6,000	3,412	5,535	595,321	0.9%
EALING PCT	4,164	4,686	3	0	590,907	0.0%
ENFIELD PCT	(13,308)	20	(10,491)	0	487,591	0.0%
GREENWICH TEACHING PCT	1,480	1,531	608	4,764	477,270	1.0%
HAMMERSMITH AND FULHAM PCT	9,878	18,617	10,538	3,513	363,267	1.0%
HARINGEY TEACHING PCT	539	1,983	29	(25,000)	465,095	(5.4%)
HARROW PCT	172	1,432	126	0	360,708	0.0%
HAVERING PCT	285	748	1,528	500	417,876	0.1%
HILLINGDON PCT	0	2	19,380	4,000	408,418	1.0%
HOUNSLOW PCT	(1,940)	48	40	0	410,758	0.0%
ISLINGTON PCT	32	6,617	1,121	9,520	472,021	2.0%
KENSINGTON AND CHELSEA PCT	6,174	8,760	3,985	5,554	364,939	1.5%
KINGSTON PCT	3,546	117	103	2,623	268,775	1.0%
LAMBETH PCT	1,064	2,907	988	5,759	648,438	0.9%
LEWISHAM PCT	92	339	90	5,172	531,889	1.0%
LONDON SHA	146,196	187,527	288,675	310,789	2,031,064	15.3%
NEWHAM PCT	3,407	6,665	1,107	5,370	569,782	0.9%
REDBRIDGE PCT	18,664	9,893	6,232	7,000	413,202	1.7%
RICHMOND AND TWICKENHAM PCT	150	708	112	2,812	286,928	1.0%
SOUTHWARK PCT	478	218	628	1,295	539,833	0.2%
SUTTON AND MERTON PCT	58	76	(2,286)	(15,000)	613,442	(2.4%)
TOWER HAMLETS PCT	396	6,881	6,753	4,908	512,904	1.0%
WALTHAM FOREST PCT	102	201	0	13	426,044	0.0%
WANDSWORTH PCT	3,390	3,930	4,386	5,439	577,394	0.9%
WESTMINSTER PCT	11,875	15,534	15,010	6,179	529,363	1.2%
<b>LONDON TOTAL SHA/PCT SECTOR</b>	<b>237,861</b>	<b>327,081</b>	<b>381,585</b>	<b>394,601</b>	<b>16,756,309</b>	<b>2.4%</b>

Trust name	2007/8 Annual Accounts Surplus/ (Deficit) £000s	2008/9 Annual Accounts Surplus/ (Deficit) £000s	2009/10 Annual Accounts Surplus/ (Operating Deficit) £000s	2010/11 Q2 Forecast Outturn Surplus/ (Operating Deficit) £000s	2010/11 Q2 Forecast Outturn Turnover £000s	2010/11 Q2 Forecast Outturn Surplus/ (Operating Deficit) as % Turnover
BARKING, HAVERING AND REDBRIDGE HOSPITALS NHS TRUST	(35,621)	(35,674)	(22,309)	(19,436)	401,772	(4.8%)
BARNET AND CHASE FARM HOSPITALS NHS TRUST	2,611	155	5,069	5,000	346,772	1.4%
BARNET, ENFIELD AND HARINGEY MENTAL HEALTH NHS TRUST	2,014	(5,451)	239	0	170,133	0.0%
BARTS AND THE LONDON NHS TRUST	16,416	7,532	11,423	6,000	666,100	0.9%
BROMLEY HOSPITALS NHS TRUST	(17,920)	(4,858)	n/a	n/a	n/a	n/a
CAMDEN AND ISLINGTON MENTAL HEALTH SOCIAL CARE NHS TRUST (1)	2,595	n/a	n/a	n/a	n/a	n/a
CENTRAL AND NORTH WEST LONDON MENTAL HEALTH NHS TRUST (2)	850	n/a	n/a	n/a	n/a	n/a
EALING HOSPITAL NHS TRUST	1,135	2,125	36	0	131,442	0.0%
EAST LONDON AND THE CITY MENTAL HEALTH NHS TRUST (3)	10,428	n/a	n/a	n/a	n/a	n/a
EPSOM AND ST HELIER UNIVERSITY HOSPITALS NHS TRUST	827	4,902	2,877	3,332	330,257	1.0%
GREAT ORMOND STREET HOSPITAL FOR CHILDREN NHS TRUST	6,956	1,348	7,368	7,215	331,359	2.2%
IMPERIAL COLLEGE HEALTHCARE NHS TRUST (4)	12,750	12,025	9,102	9,150	915,282	1.0%
KINGSTON HOSPITAL NHS TRUST	2,713	807	2,412	2,472	198,846	1.2%
LONDON AMBULANCE SERVICE NHS TRUST	398	725	1,425	526	282,111	0.2%
MAYDAY HEALTHCARE NHS TRUST	5,044	2,149	1,106	4,200	224,864	1.9%
NEWHAM UNIVERSITY HOSPITAL NHS TRUST	(2,269)	201	55	2,399	166,076	1.4%
NORTH EAST LONDON MENTAL HEALTH NHS TRUST (5)	2,136	379	n/a	n/a	n/a	n/a
NORTH MIDDLESEX UNIVERSITY HOSPITALS NHS TRUST	3,019	5,031	6,044	3,000	183,196	1.6%
NORTH WEST LONDON HOSPITALS NHS TRUST	1,030	117	(8,025)	0	359,123	0.0%
QUEEN ELIZABETH HOSPITAL NHS TRUST	(3,125)	(5,481)	n/a	n/a	n/a	n/a
QUEEN MARY'S SIDCUP NHS TRUST	(2,877)	(10,991)	n/a	n/a	n/a	n/a
ROYAL BROMPTON AND HAREFIELD NHS TRUST (6)	3,566	3,173	547	n/a	n/a	n/a
ROYAL FREE HAMPSTEAD NHS TRUST	10,724	3,791	2,035	6,471	547,229	1.2%
SOUTH LONDON HEALTHCARE NHS TRUST (7)	0	n/a	(42,067)	(36,000)	438,353	(8.2%)
SOUTH WEST LONDON AND ST GEORGE'S MENTAL HEALTH NHS TRUST	1,738	(3,246)	2,286	1,777	174,117	1.0%
ST GEORGE'S HEALTHCARE NHS TRUST	5,972	1,718	12,933	11,874	507,777	2.3%
THE HILLINGDON HOSPITAL NHS TRUST	6,263	2,196	258	307	183,776	0.2%
THE LEWISHAM HOSPITAL NHS TRUST	3,771	(3,929)	6,753	2,311	211,860	1.1%
THE ROYAL NATIONAL ORTHOPAEDIC HOSPITAL NHS TRUST	1,109	483	1,026	1,618	101,470	1.6%
WEST LONDON MENTAL HEALTH NHS TRUST	2,279	352	1,167	2,541	254,701	1.0%
WEST MIDDLESEX UNIVERSITY HOSPITAL NHS TRUST	19	(3,534)	(4,996)	131	148,124	0.1%
WHIPPS CROSS UNIVERSITY HOSPITALS NHS TRUST	828	810	229	0	237,498	0.0%
WHITTINGTON HOSPITAL NHS TRUST	1,421	1,938	139	0	180,505	0.0%
<b>LONDON TOTAL TRUST SECTOR</b>	<b>46,800</b>	<b>(21,207)</b>	<b>(2,868)</b>	<b>14,888</b>	<b>7,692,743</b>	<b>0.2%</b>

For FTs the forecast position is only for the time when the organisation was an NHS trust

- 1 Camden and Islington Mental Health and Social Care NHS Trust achieved Foundation Trust status on 1st March 2008.
- 2 Central and North West London Mental Health NHS Trust achieved Foundation Trust status on 1st May 2007.
- 3 East London and the City Mental Health NHS Trust achieved Foundation Trust status on 1st November 2007.
- 4 Imperial College Healthcare NHS Trust was formed from St Mary's NHS Trust and Hammersmith Hospitals NHS Trust.
- 5 North East London Mental Health NHS Trust achieved Foundation Trust status on 1st June 2008.
- 6 Royal Brompton and Harefield NHS Trust achieved Foundation Trust status on 1st June 2009.
- 7 South London Healthcare NHS Trust was formed from the merger of Queen Elizabeth Hospital NHS Trust (RG2), Bromley Hospitals NHS Trust (RG3), and Queen Mary's Sidcup NHS Trust (RGZ).

In addition to the operating deficits forecast in Quarter 2, 2010/11 shown above, the following organisation(s) also forecast a technical deficit (£m) in the same period. A technical deficit is a deficit arising due to:

- a) impairments including those attributable to the transition to MEA (Modern Equivalent Assets) valuation, or
- b) incurring additional non-cash revenue charges associated with bringing PFI assets on the balance sheet due to the introduction of IFRS accounting in 2009/10. This is a non-cash issue that is not recognised for NHS budgeting purposes.

Barking, Havering and Redbridge Hospitals NHS Trust (£0.4m)  
North Middlesex University Hospitals NHS Trust (£69m)  
North West London Hospital NHS Trust (£1m)  
South London Healthcare NHS Trust (£5m)  
The Hillingdon Hospital NHS Trust (£0.6m)  
Whittington Hospital NHS Trust (£0.5m)

Note: SHA and PCT turnover equals the Revenue Resource Limit (RRL) they are allocated. Trust turnover is all the income they receive including income from PCTs. Trust income should therefore be excluded from any aggregation of SHA economy turnover to avoid double counting resources.

ANNEX 8: SOUTH EAST COAST SHA

SHA and PCT name	2007/8 Annual Accounts Surplus/ (Deficit) £000s	2008/9 Annual Accounts Surplus/ (Deficit) £000s	2009/10 Annual Accounts Surplus/ (Deficit) £000s	2010/11 Q2 Forecast Outturn Surplus/ (Deficit) £000s	2010/11 Q2 Forecast Outturn Revenue Resource Limit (RRL) £000s	2010/11 Q2 Forecast Outturn Surplus/ (Deficit) as % RRL
BRIGHTON AND HOVE CITY TEACHING PCT	3,018	124	1,071	4,615	479,851	1.0%
EAST SUSSEX DOWNS AND WEALD PCT	376	2,440	1,230	5,642	565,822	1.0%
EASTERN AND COASTAL KENT PCT	3,960	5,046	6,130	12,000	1,278,636	0.9%
HASTINGS AND ROTHER PCT	3,562	3,631	3,841	3,352	348,290	1.0%
MEDWAY PCT	3,211	5,059	3,689	4,315	442,159	1.0%
SOUTH EAST COAST SHA	36,142	39,976	44,586	32,000	345,859	9.3%
SURREY PCT	425	225	(13,622)	1,000	1,703,956	0.1%
WEST KENT PCT	193	4,397	2,013	9,994	1,024,617	1.0%
WEST SUSSEX PCT	238	728	725	725	1,257,873	0.1%
<b>SOUTH EAST COAST TOTAL SHA/PCT SECTOR</b>	<b>51,125</b>	<b>61,626</b>	<b>49,663</b>	<b>73,643</b>	<b>7,447,063</b>	<b>1.0%</b>

Trust name	2007/8 Annual Accounts Surplus/ (Deficit) £000s	2008/9 Annual Accounts Surplus/ (Deficit) £000s	2009/10 Annual Accounts Surplus/ (Operating Deficit) £000s	2010/11 Q2 Forecast Outturn Surplus/ (Operating Deficit) £000s	2010/11 Q2 Forecast Outturn Turnover £000s	2010/11 Q2 Forecast Outturn Surplus/ (Operating Deficit) as % Turnover
ASHFORD AND ST PETER'S HOSPITALS NHS TRUST	2,450	5,513	6,275	3,300	223,346	1.5%
BRIGHTON AND SUSSEX UNIVERSITY HOSPITALS NHS TRUST	106	9,925	10,227	4,960	419,567	1.2%
DARTFORD AND GRAVESHAM NHS TRUST	578	4,015	115	200	153,921	0.1%
EAST KENT HOSPITALS UNIVERSITY NHS TRUST (1)	7,654	13,087	n/a	n/a	n/a	n/a
EAST SUSSEX HOSPITALS NHS TRUST	3,448	1,017	350	1,670	303,799	0.5%
KENT AND MEDWAY NHS AND SOCIAL CARE PARTNERSHIP TRUST	431	1,384	1,524	1,939	180,491	1.1%
MAIDSTONE AND TUNBRIDGE WELLS NHS TRUST	131	143	189	1,574	319,856	0.5%
MEDWAY NHS TRUST (2)	597	n/a	n/a	n/a	n/a	n/a
ROYAL SURREY COUNTY HOSPITAL NHS TRUST (3)	2,517	2,930	4,554	n/a	n/a	n/a
SOUTH DOWNS HEALTH NHS TRUST	77	92	649	665	67,608	1.0%
SOUTH EAST COAST AMBULANCE SERVICE NHS TRUST	641	658	1,130	3,724	163,960	2.3%
SURREY AND BORDERS PARTNERSHIP NHS TRUST (4)	182	(307)	n/a	n/a	n/a	n/a
SURREY AND SUSSEX HEALTHCARE NHS TRUST	27	7,048	7,755	0	193,081	0.0%
SUSSEX PARTNERSHIP NHS TRUST (5)	4,763	1,698	n/a	n/a	n/a	n/a
THE ROYAL WEST SUSSEX NHS TRUST	10,466	1,758	n/a	n/a	n/a	n/a
WESTERN SUSSEX HOSPITALS NHS TRUST (6)	0	n/a	4,138	5,209	359,271	1.4%
WORTHING AND SOUTHLANDS HOSPITALS NHS TRUST	170	408	n/a	n/a	n/a	n/a
<b>SOUTH EAST COAST TOTAL TRUST SECTOR</b>	<b>34,238</b>	<b>49,369</b>	<b>36,906</b>	<b>23,241</b>	<b>2,384,900</b>	<b>1.0%</b>

For FTs the forecast position is only for the time when the organisation was an NHS trust

- 1 East Kent Hospitals University NHS Trust achieved Foundation Trust status on 1st March 2009.
- 2 Medway NHS Trust achieved Foundation Trust status on 1st April 2008.
- 3 Royal Surrey County Hospital NHS Trust achieved Foundation Trust status on 1st December 2009.
- 4 Surrey and Borders Partnership NHS Trust achieved Foundation Trust status on 1st May 2008. It was forecasting a technical deficit relating to a phasing issue in the month before it became a Foundation Trust.
- 5 Sussex Partnership NHS Trust achieved Foundation Trust status on 1st August 2008.
- 6 Western Sussex Hospitals NHS Trust was formed from the merger of The Royal West Sussex NHS Trust (RPR) and Worthing & Southlands Hospitals NHS Trust (RPL).

In addition to the operating deficits forecast in Quarter 2, 2010/11 shown above, the following organisation(s) also forecast a technical deficit (£m) in the same period. A technical deficit is a deficit arising due to:

- a) impairments including those attributable to the transition to MEA (Modern Equivalent Assets) valuation, or
- b) incurring additional non-cash revenue charges associated with bringing PFI assets on the balance sheet due to the introduction of IFRS accounting in 2009/10. This is a non-cash issue that is not recognised for NHS budgeting purposes.

Dartford and Gravesham NHS Trust (£1m)  
Maidstone and Tunbridge Wells NHS Trust (£19m)  
South Downs Health NHS Trust (£0.4m)  
Surrey and Sussex Healthcare NHS Trust (£1m)

**Note: SHA and PCT turnover equals the Revenue Resource Limit (RRL) they are allocated. Trust turnover is all the income they receive including income from PCTs. Trust income should therefore be excluded from any aggregation of SHA economy turnover to avoid double counting resources.**

SHA and PCT name	2007/8 Annual Accounts Surplus/ (Deficit) £000s	2008/9 Annual Accounts Surplus/ (Deficit) £000s	2009/10 Annual Accounts Surplus/ (Deficit) £000s	2010/11 Q2 Forecast Outturn Surplus/ (Deficit) £000s	2010/11 Q2 Forecast Outturn Revenue Resource Limit (RRL) £000s	2010/11 Q2 Forecast Outturn Surplus/ (Deficit) as % RRL
BERKSHIRE EAST PCT	107	80	101	2,663	580,958	0.5%
BERKSHIRE WEST PCT	284	1,287	1,449	1,569	656,834	0.2%
BUCKINGHAMSHIRE PCT	(11,574)	(7,459)	1,368	0	719,379	0.0%
HAMPSHIRE PCT	469	258	486	0	1,877,331	0.0%
ISLE OF WIGHT NHS PCT	1,272	1,246	2,382	2,459	265,300	0.9%
MILTON KEYNES PCT	3,327	1,100	605	0	358,252	0.0%
OXFORDSHIRE PCT	5,799	2,181	1,901	2,184	940,800	0.2%
PORTSMOUTH CITY TEACHING PCT	7,839	5,810	5,207	635	378,331	0.2%
SOUTH CENTRAL SHA	27,192	39,632	45,125	45,400	386,694	11.7%
SOUTHAMPTON CITY PCT	2,033	155	917	2,849	416,237	0.7%
<b>SOUTH CENTRAL TOTAL SHA/PCT SECTOR</b>	<b>36,748</b>	<b>44,290</b>	<b>59,541</b>	<b>57,759</b>	<b>6,580,116</b>	<b>0.9%</b>

Trust name	2007/8 Annual Accounts Surplus/ (Deficit) £000s	2008/9 Annual Accounts Surplus/ (Deficit) £000s	2009/10 Annual Accounts Surplus/ (Operating Deficit) £000s	2010/11 Q2 Forecast Outturn Surplus/ (Operating Deficit) £000s	2010/11 Q2 Forecast Outturn Turnover £000s	2010/11 Q2 Forecast Outturn Surplus/ (Operating Deficit) as % Turnover
BERKSHIRE HEALTHCARE NHS TRUST (1)	299	n/a	n/a	n/a	n/a	n/a
BUCKINGHAMSHIRE HOSPITALS NHS TRUST	1,729	(2,750)	146	3,049	334,270	0.9%
HAMPSHIRE PARTNERSHIP NHS TRUST (2)	2,599	2,597	n/a	n/a	n/a	n/a
HEATHERWOOD AND WEXHAM PARK HOSPITALS NHS TRUST (3)	1,319	n/a	n/a	n/a	n/a	n/a
MILTON KEYNES GENERAL HOSPITAL NHS TRUST (4)	852	n/a	n/a	n/a	n/a	n/a
NUFFIELD ORTHOPAEDIC NHS TRUST	56	59	311	400	79,640	0.5%
OXFORD LEARNING DISABILITY NHS TRUST	386	631	181	400	37,977	1.1%
OXFORD RADCLIFFE HOSPITALS NHS TRUST	4,311	2,405	106	0	646,640	0.0%
OXFORDSHIRE AND BUCKINGHAMSHIRE MENTAL HEALTH PARTNERSHIP NHS TRUST (5)	1,053	n/a	n/a	n/a	n/a	n/a
PORTSMOUTH HOSPITALS NHS TRUST	7,299	159	(14,877)	31	430,882	0.0%
SOUTH CENTRAL AMBULANCE SERVICE NHS TRUST	30	559	602	1,317	136,256	1.0%
SOUTHAMPTON UNIVERSITY HOSPITALS NHS TRUST	17,944	13,591	6,777	4,879	501,981	1.0%
WINCHESTER AND EASTLEIGH HEALTHCARE NHS TRUST	633	286	224	0	140,399	0.0%
<b>SOUTH CENTRAL TOTAL TRUST SECTOR</b>	<b>38,510</b>	<b>17,537</b>	<b>(6,530)</b>	<b>10,076</b>	<b>2,308,045</b>	<b>0.4%</b>

For FTs the forecast position is only for the time when the organisation was an NHS trust

- 1 Berkshire Healthcare NHS Trust achieved Foundation Trust status on 1st May 2007.
- 2 Hampshire Partnership NHS Trust achieved Foundation Trust status on 1st April 2009.
- 3 Heatherwood and Wexham Park Hospitals NHS Trust achieved Foundation Trust status on 1st June 2007.
- 4 Milton Keynes General Hospital NHS Trust achieved Foundation Trust status on 1st October 2007.
- 5 Oxfordshire and Buckinghamshire Mental Health Partnership NHS Trust incorporates Buckinghamshire Mental Health Trust (RWT) from 1st April 2006. This Trust achieved Foundation Trust status on 1st April 2008.

In addition to the operating deficits forecast in Quarter 2, 2010/11 shown above, the following organisation(s) also forecast a technical deficit (£m) in the same period. A technical deficit is a deficit arising due to:

- a) impairments including those attributable to the transition to MEA (Modern Equivalent Assets) valuation, or
- b) incurring additional non-cash revenue charges associated with bringing PFI assets on the balance sheet due to the introduction of IFRS accounting in 2009/10. This is a non-cash issue that is not recognised for NHS budgeting purposes.

Nuffield Orthopaedic NHS Trust (£0.5m)  
Oxford Radcliffe Hospitals NHS Trust (£5m)  
Southampton University Hospitals NHS Trust (£8m)

**Note:** SHA and PCT turnover equals the Revenue Resource Limit (RRL) they are allocated. Trust turnover is all the income they receive including income from PCTs. Trust income should therefore be excluded from any aggregation of SHA economy turnover to avoid double counting resources.



## ANNEX 10: SOUTH WEST SHA

SHA and PCT name	2007/8 Annual Accounts Surplus/ (Deficit) £000s	2008/9 Annual Accounts Surplus/ (Deficit) £000s	2009/10 Annual Accounts Surplus/ (Deficit) £000s	2010/11 Q2 Forecast Outturn Surplus/ (Deficit) £000s	2010/11 Q2 Forecast Outturn Revenue Resource Limit (RRL) £000s	2010/11 Q2 Forecast Outturn Surplus/ (Deficit) as % RRL
BATH AND NORTH EAST SOMERSET PCT	2,837	1,752	1,924	2,685	286,451	0.9%
BOURNEMOUTH AND POOLE TEACHING PCT	5,779	5,403	2,886	5,356	576,041	0.9%
BRISTOL TEACHING PCT	3,689	4,514	4,974	6,955	756,572	0.9%
CORNWALL AND ISLES OF SCILLY PCT	2,727	5,622	6,064	8,562	916,988	0.9%
DEVON PCT	3,700	15	237	3,500	1,245,579	0.3%
DORSET PCT	3,070	4,057	4,374	6,133	646,267	0.9%
GLOUCESTERSHIRE PCT	2,798	5,784	6,216	8,685	914,464	0.9%
NORTH SOMERSET PCT	9	48	48	1,500	334,090	0.4%
PLYMOUTH TEACHING PCT	5,042	2,745	1,400	4,165	456,976	0.9%
SOMERSET PCT	5,110	5,235	5,751	7,965	857,453	0.9%
SOUTH GLOUCESTERSHIRE PCT	1,090	48	39	1,500	367,737	0.4%
SOUTH WEST SHA	56,710	63,822	56,756	39,355	441,183	8.9%
SWINDON PCT	935	1,930	2,080	2,945	309,657	1.0%
TORBAY CARE TRUST	7,881	1,640	1,808	2,494	265,484	0.9%
WILTSHIRE PCT	0	1,167	0	3,200	668,794	0.5%
<b>SOUTH WEST TOTAL SHA/PCT SECTOR</b>	<b>101,377</b>	<b>103,782</b>	<b>94,557</b>	<b>105,000</b>	<b>9,043,736</b>	<b>1.2%</b>

Trust name	2007/8 Annual Accounts Surplus/ (Deficit) £000s	2008/9 Annual Accounts Surplus/ (Deficit) £000s	2009/10 Annual Accounts Surplus/ (Operating Deficit) £000s	2010/11 Q2 Forecast Outturn Surplus/ (Operating Deficit) £000s	2010/11 Q2 Forecast Outturn Turnover £000s	2010/11 Q2 Forecast Outturn Surplus/ (Operating Deficit) as % Turnover
AVON AND WILTSHIRE MHP NHS TRUST	1,009	1,827	1,113	3,200	195,680	1.6%
CORNWALL PARTNERSHIP NHS TRUST (1)	0	402	1,250	n/a	n/a	n/a
DEVON PARTNERSHIP NHS TRUST	1,700	1,298	209	500	130,781	0.4%
GLOUCESTERSHIRE PARTNERSHIP NHS TRUST (2)	1,366	n/a	n/a	n/a	n/a	n/a
GREAT WESTERN AMBULANCE SERVICE NHS TRUST	1,449	5	94	800	85,667	0.9%
NORTH BRISTOL NHS TRUST	4,008	3,036	6,177	7,880	482,899	1.6%
NORTHERN DEVON HEALTHCARE NHS TRUST	7,602	7,902	0	250	133,099	0.2%
PLYMOUTH HOSPITALS NHS TRUST	12,698	5,023	2,010	0	387,333	0.0%
POOLE HOSPITALS NHS TRUST (3)	199	n/a	n/a	n/a	n/a	n/a
ROYAL CORNWALL HOSPITALS NHS TRUST	1,285	2,009	8,349	9,756	309,367	3.2%
ROYAL UNITED HOSPITAL BATH NHS TRUST	1,900	5,600	5,800	4,195	213,806	2.0%
SOMERSET PARTNERSHIP NHS AND SOCIAL CARE NHS TRUST (4)	541	94	n/a	n/a	n/a	n/a
SOUTH WEST AMBULANCE SERVICE NHS TRUST	0	325	511	1,000	121,257	0.8%
SWINDON AND MARLBOROUGH NHS TRUST (5)	835	1,274	n/a	n/a	n/a	n/a
TAUNTON AND SOMERSET NHS TRUST (6)	627	n/a	n/a	n/a	n/a	n/a
UNITED BRISTOL HEALTHCARE NHS TRUST (7)	12,809	3,706	n/a	n/a	n/a	n/a
WESTON AREA HEALTH NHS TRUST	8	408	2,448	3,607	90,497	4.0%
<b>SOUTH WEST TOTAL TRUST SECTOR</b>	<b>48,036</b>	<b>32,909</b>	<b>27,961</b>	<b>31,188</b>	<b>2,150,386</b>	<b>1.5%</b>

For FTs the forecast position is only for the time when the organisation was an NHS trust

- 1 Cornwall Partnership NHS Trust achieved Foundation Trust status on 1st March 2010.
- 2 Gloucestershire Partnership NHS Trust achieved Foundation Trust status on 1st July 2007.
- 3 Poole Hospitals NHS Trust achieved Foundation Trust status on 1st November 2007.
- 4 Somerset Partnership NHS and Social Care NHS Trust achieved Foundation Trust status on 1st May 2008.
- 5 Swindon and Marlborough NHS Trust achieved Foundation Trust status on 1st December 2008.
- 6 Taunton and Somerset NHS Trust achieved Foundation Trust status on 1st December 2007.
- 7 United Bristol Healthcare NHS Trust achieved Foundation Trust status on 1st June 2008.

In addition to the operating deficits forecast in Quarter 2, 2010/11 shown above, the following organisation(s) also forecast a technical deficit (£m) in the same period. A technical deficit is a deficit arising due to:

- a) impairments including those attributable to the transition to MEA (Modern Equivalent Assets) valuation, or
- b) incurring additional non-cash revenue charges associated with bringing PFI assets on the balance sheet due to the introduction of IFRS accounting in 2009/10. This is a non-cash issue that is not recognised for NHS budgeting purposes.

Devon Partnership NHS Trust (£0.3m)  
Great Western Ambulance Service NHS Trust (£2m)  
Northern Devon Healthcare NHS Trust (£3m)  
Plymouth Hospitals NHS Trust (£3m)

**Note:** SHA and PCT turnover equals the Revenue Resource Limit (RRL) they are allocated. Trust turnover is all the income they receive including income from PCTs. Trust income should therefore be excluded from any aggregation of SHA economy turnover to avoid double counting resources.

ANNEX 11: NHS PERFORMANCE FRAMEWORK ACUTE TRUST RESULTS

Trust name	Overall Finance Score	Overall Quality of Services Score	Performance Rating after Escalation			Quality: Standards & Vital Signs		Quality: User Experience		Quality: CQC Registration	
			Finance	Quality of Services	Score	Rating	Score	Rating	Rating		
East Cheshire NHS Trust	Performing	Performing	Performing	Performing	Performing	2.72	Performing	5	Performing	Performing	
East Lancashire Hospitals NHS Trust	Performing	Performing	Performing	Performing	Performing	2.87	Performing	5	Performing	Performing	
North Cumbria University Hospitals NHS Trust	Performing	Performing	Performing	Performing	Performing	2.76	Performing	5	Performing	Performing	
Pennine Acute Hospitals NHS Trust	Performing	Performing	Performing	Performing	Performing	2.93	Performing	3	Performance under review	Performing	
Royal Liverpool and Broadgreen University Hospitals NHS Trust	Performing	Performing	Performing	Performing	Performing	2.93	Performing	5	Performing	Performing	
Southport and Ormskirk Hospital NHS Trust	Performing	Performing	Performing	Performing	Performing	2.85	Performing	5	Performing	Performing	
St Helens and Knowsley Hospitals NHS Trust	Performing	Performing	Performing	Performing	Performing	2.83	Performing	5	Performing	Performing	
Trafford Healthcare NHS Trust	Underperforming	Performing	Escalated	Challenged	Performing	2.76	Performing	4	Performing	Performing	
Hull and East Yorkshire Hospitals NHS Trust	Performing	Performing	Performing	Performing	Performing	2.69	Performing	3	Performance under review	Performing	
Leeds Teaching Hospitals NHS Trust	Performing	Performing	Performing	Performing	Performing	2.62	Performing	5	Performing	Performing	
Mid Yorkshire Hospitals NHS Trust	Performing	Performing	Performing	Performing	Performing	2.79	Performing	2	Performance under review	Performing	
Scarborough and North East Yorkshire Health Care NHS Trust	Performing	Performance Under Review	Performing	Escalated	Underperforming	2.76	Performing	5	Performing	Performance Under Review	
Northampton General Hospital NHS Trust	Performing	Performing	Performing	Performing	Performing	3.00	Performing	3	Performance under review	Performing	
Nottingham University Hospitals NHS Trust	Performing	Performing	Performing	Performing	Performing	2.56	Performing	5	Performing	Performing	
United Lincolnshire Hospitals NHS Trust	Performing	Performing	Performing	Performing	Performing	2.50	Performing	5	Performing	Performing	
University Hospitals Of Leicester NHS Trust	Performing	Performing	Performing	Performing	Performing	2.66	Performing	4	Performing	Performing	
George Eliot Hospital NHS Trust	Performing	Performing	Performing	Performing	Performing	2.85	Performing	2	Performance under review	Performing	
Hereford Hospitals NHS Trust	Performing	Performing	Performing	Performing	Performing	2.60	Performing	5	Performing	Performing	
Robert Jones and Agnes Hunt Orthopaedic and District Hospital NHS Trust	Performing	Performing	Performing	Performing	Performing	2.47	Performing	5	Performing	Performing	
Sandwell and West Birmingham Hospitals NHS Trust	Performing	Performing	Performing	Performing	Performing	2.73	Performing	5	Performing	Performing	
Shrewsbury and Telford Hospital NHS Trust	Performing	Performance Under Review	Performing	Performing	Performance Under Review	2.19	Performance under review	5	Performing	Performing	
The Royal Wolverhampton Hospitals NHS Trust	Performing	Performing	Performing	Performing	Performing	2.72	Performing	4	Performing	Performing	
University Hospital Of North Staffordshire NHS Trust	Performing	Performance Under Review	Performing	Performing	Performance Under Review	2.28	Performance under review	5	Performing	Performing	
University Hospitals Coventry and Warwickshire NHS Trust	Performing	Performing	Performing	Performing	Performing	2.92	Performing	5	Performing	Performing	
Walsall Hospitals NHS Trust	Performing	Performing	Performing	Performing	Performing	2.93	Performing	2	Performance under review	Performing	
Worcestershire Acute Hospitals NHS Trust	Performing	Performing	Performing	Performing	Performing	2.76	Performing	5	Performing	Performing	
Bedford Hospital NHS Trust	Performing	Performing	Performing	Performing	Performing	2.82	Performing	2	Performance under review	Performing	
East and North Hertfordshire NHS Trust	Performing	Performance Under Review	Performing	Escalated	Underperforming	2.67	Performing	1	Underperforming	Performing	
Hinchingbrooke Health Care NHS Trust	Underperforming	Performing	Underperforming	Performing	Performing	2.47	Performing	5	Performing	Performing	
Ipswich Hospital NHS Trust	Performing	Performing	Performing	Performing	Performing	2.46	Performing	5	Performing	Performing	
Mid Essex Hospital Services NHS Trust	Performance under review	Performing	Performance under review	Performing	Performing	2.44	Performing	5	Performing	Performing	
The Princess Alexandra Hospital NHS Trust	Performing	Performing	Performing	Performing	Performing	2.93	Performing	3	Performance under review	Performing	
The Queen Elizabeth Hospital King's Lynn NHS Trust	Performing	Performing	Performing	Performing	Performing	2.56	Performing	5	Performing	Performing	
West Hertfordshire Hospitals NHS Trust	Performing	Performing	Performing	Performing	Performing	2.86	Performing	2	Performance under review	Performing	
West Suffolk Hospitals NHS Trust	Performing	Performing	Performing	Performing	Performing	2.84	Performing	5	Performing	Performing	
Barking, Havering and Redbridge University Hospitals NHS Trust	Underperforming	Performance Under Review	Escalated	Challenged	Escalated	Underperforming	2.65	Performing	3	Performance under review	Performance Under Review
Barnet and Chase Farm Hospitals NHS Trust	Performing	Performing	Performing	Performing	Performing	2.96	Performing	2	Performance under review	Performing	
Barts and The London NHS Trust	Performing	Performing	Performing	Performing	Performing	2.78	Performing	5	Performing	Performing	
Croydon Health Services NHS Trust	Performing	Performance Under Review	Performing	Escalated	Underperforming	2.96	Performing	0	Underperforming	Performing	

Trust name	Overall Finance Score	Overall Quality of Services Score	Performance Rating after Escalation				Quality: Standards & Vital Signs		Quality: User Experience		Quality: CQC Registration
			Finance	Quality of Services	Score	Rating	Score	Rating	Rating		
										Escalated	Challenged
Ealing Hospital NHS Trust	Performing	Performance Under Review		Performing	Escalated	Underperforming	2.73	Performing	0	Underperforming	Performing
Epsom and St Helier University Hospitals NHS Trust	Performing	Performing		Performing		Performing	2.70	Performing	5	Performing	Performing
Great Ormond Street Hospital For Children NHS Trust	Performing	Performing		Performing		Performing	2.50	Performing			Performing
Imperial College Healthcare NHS Trust	Performance under review	Performing		Performance under review		Performing	2.87	Performing	3	Performance under review	Performing
Kingston Hospital NHS Trust	Performing	Performing		Performing		Performing	2.85	Performing	5	Performing	Performing
Lewisham Healthcare NHS Trust	Performance under review	Performing		Performance under review		Performing	2.75	Performing	3	Performance under review	Performing
Newham University Hospital NHS Trust	Performance under review	Performing		Performance under review		Performing	2.92	Performing	3	Performance under review	Performing
North Middlesex University Hospital NHS Trust	Performing	Performing		Performing		Performing	2.97	Performing	2	Performance under review	Performing
North West London Hospitals NHS Trust	Underperforming	Performance Under Review	Escalated	Challenged	Escalated	Underperforming	3.00	Performing	0	Underperforming	Performing
Royal Free Hampstead NHS Trust	Performing	Performance Under Review		Performing	Escalated	Underperforming	2.72	Performing	1	Underperforming	Performing
Royal National Orthopaedic Hospital NHS Trust	Performing	Performing		Performing		Performing	2.58	Performing	5	Performing	Performing
South London Healthcare NHS Trust	Underperforming	Performing	Escalated	Challenged		Performing	2.89	Performing	2	Performance under review	Performing
St George's Healthcare NHS Trust	Performing	Performance Under Review		Performing		Performance Under Review	2.52	Performing	1	Underperforming	Performing
The Hillingdon Hospital NHS Trust	Performing	Performing		Performing		Performing	2.94	Performing	3	Performance under review	Performing
The Whittington Hospital NHS Trust	Performing	Performing		Performing		Performing	2.87	Performing	5	Performing	Performing
West Middlesex University Hospital NHS Trust	Underperforming	Performing	Escalated	Challenged		Performing	2.55	Performing	2	Performance under review	Performing
Whipps Cross University Hospital NHS Trust	Underperforming	Performing	Escalated	Challenged		Performing	3.00	Performing	3	Performance under review	Performing
Brighton and Sussex University Hospitals NHS Trust	Performing	Performing		Performing		Performing	2.53	Performing	5	Performing	Performing
Dartford and Gravesham NHS Trust	Performing	Performing		Performing		Performing	2.54	Performing	4	Performing	Performing
East Sussex Hospitals NHS Trust	Performance under review	Performing		Performance under review		Performing	2.62	Performing	5	Performing	Performing
Maidstone and Tunbridge Wells NHS Trust	Performing	Performing		Performing		Performing	2.85	Performing	5	Performing	Performing
Surrey and Sussex Healthcare NHS Trust	Performing	Performing		Performing		Performing	2.55	Performing	2	Performance under review	Performing
Western Sussex Hospitals NHS Trust	Performing	Performing		Performing		Performing	2.87	Performing	5	Performing	Performing
Buckinghamshire Healthcare NHS Trust	Performing	Performing		Performing		Performing	2.67	Performing	4	Performing	Performing
Isle Of Wight NHS PCT	Performing	Performing		Performing		Performing	2.69	Performing	5	Performing	Performing
Nuffield Orthopaedic Centre NHS Trust	Performing	Performance Under Review		Performing		Performance Under Review	2.24	Performance under review	5	Performing	Performing
Oxford Radcliffe Hospitals NHS Trust	Performing	Performance Under Review		Performing	Escalated	Underperforming	2.35	Performance under review	5	Performing	Performing
Portsmouth Hospitals NHS Trust	Performance under review	Performance Under Review	Escalated	Challenged		Performance Under Review	2.63	Performing	1	Underperforming	Performing
Southampton University Hospitals NHS Trust	Performing	Performing		Performing		Performing	2.79	Performing	5	Performing	Performing
Winchester and Eastleigh Healthcare NHS Trust	Performing	Performing		Performing		Performing	2.80	Performing	5	Performing	Performing
North Bristol NHS Trust	Performing	Performing		Performing		Performing	2.84	Performing	5	Performing	Performing
Northern Devon Healthcare NHS Trust	Performing	Performing		Performing		Performing	2.66	Performing	5	Performing	Performing
Plymouth Hospitals NHS Trust	Performing	Performing		Performing		Performing	2.79	Performing	5	Performing	Performing
Royal Cornwall Hospitals NHS Trust	Performing	Performing		Performing		Performing	2.84	Performing	5	Performing	Performing
Royal United Hospital Bath NHS Trust	Performing	Performing		Performing		Performing	2.63	Performing	5	Performing	Performing
Weston Area Health NHS Trust	Performing	Performing		Performing		Performing	2.66	Performing	5	Performing	Performing

1 Please note that the Isle Of Wight score includes performance from the ambulance providers and where stated commissioner elements.

2 Score moderated where patient experience score is underperforming, in this case highest score trust can achieve is performance under review. In addition, this score has not been compared to last quarter as an Overall Quality Score was not calculated last quarter.

3 If a trust has been assessed as 'performance under review' for 3 consecutive quarters, it will be categorised here as 'underperforming', if a trust has been assessed as 'underperforming' for 3 consecutive quarters, it will be categorised here as 'challenged'. In addition, independent over-riding rules may be used to categorise a trust as 'challenged' or 'underperforming'.

4 Great Ormond Street do not have user experience data, so for this trust it has not been used as a moderator.

**ANNEX 12: NHS PERFORMANCE FRAMEWORK AMBULANCE TRUST RESULTS**

Trust name	Overall Finance Score	Overall Quality of Services Score	Performance Rating after Escalation			Quality: Standards & Vital Signs		Quality: CQC Registration
			Finance	Quality of Services		Score	Rating	Rating
East Midlands Ambulance Service NHS Trust	Performing	Performing	Performing	Performing	Performing	2.38	Performing	Performing
East of England Ambulance Service NHS Trust	Performing	Performing	Performing	Performing	Performing	2.75	Performing	Performing
Great Western Ambulance Service NHS Trust	Performing	Performing	Performing	Performing	Performing	2.63	Performing	Performing
London Ambulance Service	Performing	Performing	Performing	Performing	Performing	2.75	Performing	Performing
North East Ambulance Service NHS Trust	Performing	Performing	Performing	Performing	Performing	2.75	Performing	Performing
North West Ambulance Service NHS Trust	Performing	Performance Under Review	Performing	Escalated	Underperforming	2.13	Performance Under Review	Performing
South Central Ambulance Service NHS Trust	Performing	Performance Under Review	Performing	Performing	Performance Under Review	2.13	Performance Under Review	Performing
South East Coast Ambulance Service NHS Trust	Performing	Performing	Performing	Performing	Performing	2.88	Performing	Performing
South Western Ambulance Service NHS Trust	Performing	Performing	Performing	Performing	Performing	2.88	Performing	Performing
West Midlands Ambulance Service NHS Trust	Performing	Performing	Performing	Performing	Performing	2.88	Performing	Performing
Yorkshire Ambulance Service NHS Trust	Performing	Performing	Performing	Performing	Performing	2.38	Performing	Performing

1 If a trust has been assessed as 'performance under review' for 3 consecutive quarters, it will be categorised here as 'underperforming', if a trust has been assessed as 'underperforming' for 3 consecutive quarters, it will be categorised here as 'challenged'. In addition, independent over-riding rules may be used to categorise a trust as challenged or underperforming.

**ANNEX 13: NHS PERFORMANCE FRAMEWORK MENTAL HEALTH TRUST RESULTS**

Trust name	Overall Finance Score	Overall Quality of Services Score	Quality: Standards & Vital Signs		Quality: User Experience		Quality: CQC Registration
			Score	Rating	Score	Rating	Rating
Manchester Mental Health and Social Care Trust	Performing	Performing	2.20	Performing	4	Performing	Performing
Mersey Care NHS Trust	Performing	Performing	2.36	Performing	3	Performance under review	Performing
Bradford District Care Trust	Performing	Performing	2.45	Performing	4	Performing	Performing
Derbyshire Mental Health Services NHS Trust	Performing	Performing	2.42	Performing	4	Performing	Performing
Leicestershire Partnership NHS Trust	Performing	Performing	2.33	Performing	3	Performance under review	Performing
Nottinghamshire Healthcare NHS Trust	Performing	Performing	2.92	Performing	4	Performing	Performing
Coventry and Warwickshire Partnership NHS Trust	Performing	Performing	2.58	Performing	3	Performance under review	Performing
Dudley and Walsall Mental Health Partnership NHS Trust	Performing	Performing	2.67	Performing	3	Performance under review	Performing
North Staffordshire Combined Healthcare NHS Trust	Performing	Performing	2.58	Performing	4	Performing	Performing
Worcestershire Mental Health Partnership NHS Trust	Performing	Performing	2.45	Performing	4	Performing	Performing
Suffolk Mental Health Partnership NHS Trust	Performing	Performing	2.67	Performing	4	Performing	Performing
Barnet, Enfield and Haringey Mental Health NHS Trust	Performing	Performing	2.25	Performing	3	Performance under review	Performing
South West London and St Georges Mental Health NHS Trust	Performing	Performing	2.33	Performing	4	Performing	Performing
West London Mental Health NHS Trust	Performing	Performance Under Review	2.67	Performing	2	Performance under review	Performance Under Review
Kent and Medway NHS and Social Care Partnership Trust	Performing	Performance Under Review	2.50	Performing	1	Underperforming	Performing
Avon and Wiltshire Mental Health Partnership NHS Trust	Performing	Performing	2.83	Performing	3	Performance under review	Performing
Devon Partnership NHS Trust	Performing	Performance Under Review	1.91	Performing	4	Performing	Performance Under Review

1 Score moderated where patient experience score is underperforming - in this case highest score trust can achieve is performance under review. Otherwise the score is the lowest rating from the other domains.

## ANNEX 14: Assessment of PCT performance against Vital Signs plan for All Age All Cause Mortality (AAACM), 2009

AAACM figures are single year rates (age-standardised) per 100,000 population. Figures are shown for the whole PCT (total area) and also, for former spearhead PCTs, for the former spearhead component of the PCT.

<b>Green</b>	Performance on or below plan
<b>Amber</b>	Performance 5% or less above plan
<b>Red</b>	Performance more than 5% above plan

MALES - Latest FINAL calendar year (2009) AAACM against 2009 plan point						
PCTs ARE SHOWN RANKED BY % DIFFERENCE FROM PLAN FOR TOTAL AREA						
PCT	TOTAL AREA			FORMER SPEARHEAD COMPONENT		
	Performance	Plan	% difference from plan	Performance	Plan	% difference from plan
City and Hackney Teaching	670	768	-12.8%	693	770	-10.0%
Solihull	532	604	-12.0%			
Hounslow	675	762	-11.4%			
West Hertfordshire	569	640	-11.1%			
Luton Teaching	688	770	-10.6%			
Southampton City	632	699	-9.6%			
Swindon	637	703	-9.4%			
South Birmingham	669	736	-9.2%	669	736	-9.2%
Richmond and Twickenham	512	562	-9.0%			
Warrington	637	698	-8.7%	637	698	-8.7%
Camden	657	719	-8.6%			
Redcar and Cleveland	645	705	-8.5%	645	705	-8.5%
West Essex	611	668	-8.5%			
Waltham Forest	732	799	-8.4%			
Redbridge	588	641	-8.3%			
Southwark	644	701	-8.1%	644	701	-8.1%
Harrow	512	556	-7.8%			
Croydon	586	633	-7.5%			
Hillingdon	649	700	-7.3%			
Kingston	538	578	-6.8%			
Dudley	664	710	-6.5%			
North East Essex	597	638	-6.3%			
South West Essex	603	641	-6.0%			
Herefordshire	601	637	-5.7%			
East and North Hertfordshire	598	630	-5.0%			
South Staffordshire	661	695	-5.0%	642	635	1.1%
Westminster	483	508	-4.9%			
Central Lancashire	678	712	-4.8%	758	746	1.6%
Northumberland Care Trust	612	643	-4.8%	698	708	-1.4%
Peterborough	708	744	-4.8%			
Lambeth	748	785	-4.7%	748	785	-4.7%
Knowsley	788	826	-4.6%	788	826	-4.6%
South Gloucestershire	553	579	-4.5%			
Western Cheshire	594	618	-3.9%			
Surrey	541	563	-3.9%			
Leeds	672	697	-3.6%			
Cambridgeshire	578	600	-3.6%			
North Lancashire	665	688	-3.4%			
Suffolk	566	585	-3.3%			
Berkshire West	578	597	-3.1%			
Bassetlaw	665	685	-3.0%			
Tower Hamlets	781	804	-2.8%	781	804	-2.8%
Haringey Teaching	709	729	-2.7%	709	729	-2.7%
Cumbria	651	669	-2.7%	705	711	-0.8%
Great Yarmouth and Waveney	628	645	-2.7%			
Torbay Care Trust	678	695	-2.5%			
East Sussex Downs and Weald	563	577	-2.4%			
Stockport	693	710	-2.3%			
North Somerset	571	585	-2.3%			
Bury	690	705	-2.2%	690	705	-2.2%
Trafford	635	647	-1.9%			
Sefton	702	715	-1.8%			
North Yorkshire and York	601	611	-1.6%			
Brighton and Hove City	706	718	-1.6%			
Calderdale	715	727	-1.6%			
Nottinghamshire County	646	655	-1.3%			
Sutton and Merton	567	573	-1.1%			
Bristol	714	721	-1.0%			
Enfield	615	621	-0.9%			
Devon	579	584	-0.9%			

MALES - Latest FINAL calendar year (2009) AAACM against 2009 plan point						
PCTs ARE SHOWN RANKED BY % DIFFERENCE FROM PLAN FOR TOTAL AREA						
PCT	TOTAL AREA			FORMER SPEARHEAD COMPONENT		
	Performance	Plan	% difference from plan	Performance	Plan	% difference from plan
North Tyneside	708	713	-0.8%	708	713	-0.8%
Dorset	534	538	-0.8%			
Hastings and Rother	682	686	-0.6%			
Central and Eastern Cheshire	629	633	-0.6%			
Northamptonshire	644	648	-0.6%	926	749	23.7%
Bath and North East Somerset	570	573	-0.5%			
Portsmouth City Teaching	685	688	-0.5%			
Leicestershire County and Rutland	583	586	-0.4%			
Mid Essex	562	564	-0.4%			
Gloucestershire	605	606	-0.2%			
North Tees	708	709	-0.1%	708	709	-0.1%
Barnet	570	570	0.0%			
Coventry Teaching	711	711	0.0%	711	711	0.0%
West Sussex	589	588	0.2%			
Oxfordshire	585	584	0.2%			
Ealing	659	657	0.2%			
East Riding of Yorkshire	611	609	0.3%			
Buckinghamshire	568	566	0.4%			
Derby City	686	682	0.6%			
Wiltshire	585	581	0.7%			
Shropshire County	631	626	0.8%			
South Tyneside	752	746	0.9%	752	746	0.9%
Wandsworth	707	701	0.9%			
Havering	646	640	0.9%			
Norfolk	602	596	1.0%			
Bromley	571	565	1.1%			
Worcestershire	625	617	1.3%			
Newcastle	739	729	1.3%	739	729	1.3%
Bournemouth and Poole	633	625	1.3%			
Hampshire	553	545	1.5%			
South East Essex	631	621	1.6%			
Isle of Wight Healthcare	613	603	1.7%			
Darlington	783	770	1.7%			
Somerset	598	588	1.8%			
Medway Teaching	715	702	1.9%			
Sheffield	686	671	2.3%			
Brent Teaching	603	589	2.5%			
Derbyshire County	631	615	2.7%	748	700	6.9%
Sunderland Teaching	768	748	2.7%	768	748	2.7%
Lewisham	759	737	3.0%	759	737	3.0%
Wolverhampton City	729	708	3.0%	729	708	3.0%
Stoke on Trent	785	762	3.0%	803	764	5.1%
West Kent	600	582	3.2%			
Bradford and Airedale	736	713	3.3%	736	713	3.3%
Lincolnshire	649	628	3.3%	731	682	7.2%
Warwickshire	649	628	3.4%	730	700	4.2%
Wakefield District	729	704	3.6%	729	704	3.6%
Berkshire East	612	591	3.6%			
Heywood, Middleton and Rochdale	797	768	3.7%	797	768	3.7%
Bexley Care Trust	618	594	4.0%			
Middlesbrough	809	776	4.2%	809	776	4.2%
Plymouth Teaching	749	718	4.3%			
Kirklees	749	718	4.3%			
Islington	835	799	4.5%	835	799	4.5%
Oldham	816	780	4.6%	816	780	4.6%
Bedfordshire	639	610	4.7%			
North Staffordshire	687	656	4.7%			
Birmingham East and North	736	702	4.8%	736	702	4.8%
County Durham	752	717	4.9%	781	731	6.8%
Barnsley	762	726	5.0%	762	726	5.0%
Tameside and Glossop	800	761	5.1%	815	775	5.2%
Cornwall and Isles of Scilly	634	603	5.1%			
Walsall Teaching	736	699	5.2%	736	699	5.2%
Barking and Dagenham	765	724	5.6%	765	724	5.6%
Manchester	938	884	6.1%	938	884	6.1%
Liverpool	890	838	6.2%	890	838	6.2%
Doncaster	757	712	6.3%	757	712	6.3%
North East Lincolnshire Care Trust Plus	739	693	6.6%	737	693	6.3%
Newham	781	732	6.7%	781	732	6.7%
Gateshead	795	744	6.9%	795	744	6.9%
Wirral	764	714	7.0%	764	714	7.0%
Kensington and Chelsea	446	416	7.0%			

<b>MALES - Latest FINAL calendar year (2009) AAACM against 2009 plan point</b>						
<b>PCTs ARE SHOWN RANKED BY % DIFFERENCE FROM PLAN FOR TOTAL AREA</b>						
PCT	TOTAL AREA			FORMER SPEARHEAD COMPONENT		
	Performance	Plan	% difference from plan	Performance	Plan	% difference from plan
Bolton	768	716	7.2%	768	716	7.2%
Hartlepool	823	767	7.3%	823	767	7.3%
Hammersmith and Fulham	637	593	7.4%	637	593	7.4%
Eastern and Coastal Kent	698	646	8.0%			
Salford	887	813	9.0%	887	813	9.0%
Halton and St Helens	828	758	9.2%	828	758	9.2%
Ashton, Leigh and Wigan	780	714	9.3%	780	714	9.3%
North Lincolnshire	715	653	9.4%			
Sandwell	836	760	9.9%	836	760	9.9%
Rotherham	763	691	10.5%	763	691	10.5%
Greenwich Teaching	796	720	10.6%	796	720	10.6%
Telford and Wrekin	730	657	11.2%			
East Lancashire	786	705	11.5%	806	714	12.9%
Blackburn with Darwen	898	799	12.4%	898	799	12.4%
Nottingham City	857	758	13.1%	857	758	13.1%
Leicester City	839	741	13.2%	839	741	13.2%
Heart of Birmingham Teaching	827	730	13.2%	827	730	13.2%
Hull	856	742	15.4%	856	742	15.4%
Blackpool	928	786	18.1%	928	786	18.1%
Milton Keynes	665	558	19.2%			

<b>FEMALES - Latest FINAL calendar year (2009) AAACM against 2009 plan point</b>						
<b>PCTs ARE SHOWN RANKED BY % DIFFERENCE FROM PLAN FOR TOTAL AREA</b>						
PCT	TOTAL AREA			FORMER SPEARHEAD COMPONENT		
	Performance	Plan	% difference from plan	Performance	Plan	% difference from plan
Richmond and Twickenham	352	421	-16.4%			
Hounslow	482	559	-13.8%			
Wandsworth	439	504	-13.0%			
Havering	415	476	-12.9%			
Camden	414	469	-11.8%			
East Sussex Downs and Weald	373	420	-11.2%			
Haringey Teaching	403	454	-11.2%	403	454	-11.2%
Enfield	434	485	-10.4%			
Croydon	450	502	-10.4%			
North Somerset	390	435	-10.3%			
South Staffordshire	448	490	-8.5%	434	471	-7.9%
Tower Hamlets	508	555	-8.5%	508	555	-8.5%
Harrow	374	408	-8.5%			
Southampton City	453	495	-8.4%			
West Sussex	415	453	-8.3%			
Surrey	386	420	-8.1%			
Telford and Wrekin	473	514	-8.1%			
Dudley	459	499	-8.0%			
Luton Teaching	530	575	-7.9%			
West Hertfordshire	426	462	-7.8%			
Lewisham	481	521	-7.6%	481	521	-7.6%
Redbridge	434	470	-7.6%			
Kingston	405	438	-7.5%			
Southwark	422	456	-7.5%	422	456	-7.5%
Solihull	393	425	-7.4%			
Leicestershire County and Rutland	414	447	-7.3%			
South East Essex	438	471	-7.0%			
Kirklees	509	546	-6.8%			
South West Essex	449	482	-6.8%			
Trafford	440	471	-6.5%			
East and North Hertfordshire	426	455	-6.3%			
Hastings and Rother	475	506	-6.2%			
Warwickshire	447	476	-6.0%	501	530	-5.5%
Heywood, Middleton and Rochdale	526	560	-6.0%	526	560	-6.0%
Hillingdon	420	446	-5.8%			
Bristol	488	516	-5.5%			
Gloucestershire	413	436	-5.4%			
Knowsley	545	576	-5.3%	545	576	-5.3%
Peterborough	485	512	-5.3%			
Westminster	338	356	-5.1%			
Eastern and Coastal Kent	470	494	-4.9%			
Redcar and Cleveland	484	509	-4.9%	484	509	-4.9%
Isle of Wight Healthcare	407	427	-4.8%			
Birmingham East and North	486	510	-4.7%	486	510	-4.7%



FEMALES - Latest FINAL calendar year (2009) AAACM against 2009 plan point						
PCTs ARE SHOWN RANKED BY % DIFFERENCE FROM PLAN FOR TOTAL AREA						
PCT	TOTAL AREA			FORMER SPEARHEAD COMPONENT		
	Performance	Plan	% difference from plan	Performance	Plan	% difference from plan
Dorset	380	399	-4.7%			
South Birmingham	490	514	-4.6%	490	514	-4.6%
Great Yarmouth and Waveney	449	470	-4.4%			
Islington	533	556	-4.3%	533	556	-4.3%
Bournemouth and Poole	421	439	-4.1%			
Waltham Forest	499	520	-4.1%			
Berkshire West	407	424	-4.0%			
Wakefield District	494	514	-3.8%	494	514	-3.8%
Darlington	527	547	-3.7%			
Bassetlaw	522	540	-3.3%			
Milton Keynes	461	477	-3.3%			
Kensington and Chelsea	280	290	-3.3%			
Medway Teaching	494	511	-3.3%			
Derbyshire County	463	479	-3.3%	527	535	-1.5%
Worcestershire	443	457	-3.2%			
West Essex	433	446	-3.0%			
Cambridgeshire	415	428	-3.0%			
Newcastle	516	531	-2.8%	516	531	-2.8%
East Riding of Yorkshire	450	463	-2.8%			
Oxfordshire	405	417	-2.8%			
Doncaster	498	512	-2.7%	498	512	-2.7%
Sutton and Merton	410	421	-2.7%			
Portsmouth City Teaching	463	475	-2.6%			
Greenwich Teaching	484	497	-2.5%	484	497	-2.5%
Warrington	491	504	-2.5%	491	504	-2.5%
Bexley Care Trust	425	436	-2.4%			
Sefton	481	493	-2.4%			
Swindon	443	453	-2.3%			
Buckinghamshire	392	401	-2.2%			
Suffolk	425	434	-2.2%			
Norfolk	420	429	-2.2%			
North Tyneside	505	516	-2.1%	505	516	-2.1%
Hampshire	407	415	-2.0%			
Coventry Teaching	498	508	-2.0%	498	508	-2.0%
North East Essex	423	431	-1.9%			
South Tyneside	507	517	-1.9%	507	517	-1.9%
Walsall Teaching	478	486	-1.7%	478	486	-1.7%
Sandwell	516	525	-1.7%	516	525	-1.7%
Heart of Birmingham Teaching	505	513	-1.6%	505	513	-1.6%
City and Hackney Teaching	462	469	-1.5%	473	470	0.6%
North Tees	514	521	-1.4%	514	521	-1.4%
Mid Essex	411	416	-1.3%			
North Yorkshire and York	427	431	-1.0%			
Bromley	397	401	-1.0%			
South Gloucestershire	391	395	-0.9%			
Blackpool	564	569	-0.9%	564	569	-0.9%
Newham	544	549	-0.9%	544	549	-0.9%
Bath and North East Somerset	409	412	-0.8%			
Ealing	436	440	-0.8%			
Somerset	418	421	-0.7%			
Central Lancashire	514	517	-0.6%	566	534	6.0%
County Durham	538	541	-0.5%	555	549	1.1%
North Lancashire	482	484	-0.5%			
North Lincolnshire	518	520	-0.4%			
Hammersmith and Fulham	392	393	-0.3%	392	393	-0.3%
Leeds	480	481	-0.3%			
Hartlepool	558	558	0.0%	558	558	0.0%
Northamptonshire	475	474	0.2%	529	541	-2.2%
Wiltshire	422	421	0.2%			
Liverpool	599	597	0.3%	599	597	0.3%
Wolverhampton City	516	512	0.7%	516	512	0.7%
Ashton, Leigh and Wigan	544	540	0.7%	544	540	0.7%
Sunderland Teaching	550	546	0.8%	550	546	0.8%
Sheffield	488	484	0.9%			
Plymouth Teaching	487	482	1.0%			
Stockport	466	461	1.0%			
Salford	585	578	1.1%	585	578	1.1%
Bedfordshire	455	450	1.2%			
Western Cheshire	457	450	1.5%			
Cornwall and Isles of Scilly	445	438	1.5%			
Rotherham	527	519	1.6%	527	519	1.6%
West Kent	442	435	1.7%			

<b>FEMALES - Latest FINAL calendar year (2009) AAACM against 2009 plan point</b>						
<b>PCTs ARE SHOWN RANKED BY % DIFFERENCE FROM PLAN FOR TOTAL AREA</b>						
<b>PCT</b>	<b>TOTAL AREA</b>			<b>FORMER SPEARHEAD COMPONENT</b>		
	<b>Performance</b>	<b>Plan</b>	<b>% difference from plan</b>	<b>Performance</b>	<b>Plan</b>	<b>% difference from plan</b>
Devon	419	411	2.0%			
Shropshire County	446	437	2.1%			
Lincolnshire	464	454	2.3%	494	506	-2.4%
Nottinghamshire County	475	463	2.7%			
Manchester	610	591	3.2%	610	591	3.2%
Bradford and Airedale	528	512	3.3%	528	512	3.3%
Cumbria	482	467	3.3%	505	487	3.7%
Derby City	499	483	3.4%			
Northumberland Care Trust	486	470	3.4%	567	523	8.4%
Halton and St Helens	568	547	3.9%	568	547	3.9%
Bolton	551	530	3.9%	551	530	3.9%
Herefordshire	414	398	4.0%			
North Staffordshire	488	468	4.2%			
Gateshead	553	530	4.3%	553	530	4.3%
Torbay Care Trust	462	442	4.6%			
Bury	539	514	4.9%	539	514	4.9%
Barnet	398	378	5.3%			
Calderdale	515	487	5.7%			
Wirral	529	500	5.8%	529	500	5.8%
Oldham	568	537	5.8%	568	537	5.8%
Lambeth	550	520	5.8%	550	520	5.8%
Central and Eastern Cheshire	465	439	5.8%			
Berkshire East	436	412	5.9%			
Stoke on Trent	554	523	6.0%	564	524	7.7%
Brent Teaching	412	387	6.5%			
Nottingham City	536	503	6.5%	536	503	6.5%
Barking and Dagenham	544	510	6.6%	544	510	6.6%
Brighton and Hove City	492	461	6.7%			
Tameside and Glossop	591	554	6.7%	586	548	6.8%
Hull	575	537	7.0%	575	537	7.0%
Barnsley	581	541	7.4%	581	541	7.4%
East Lancashire	555	515	7.7%	568	535	6.1%
Middlesbrough	591	545	8.5%	591	545	8.5%
Blackburn with Darwen	617	558	10.6%	617	558	10.6%
Leicester City	576	519	10.9%	576	519	10.9%
North East Lincolnshire Care Trust Plus	519	464	11.8%	516	464	11.2%

Please note: % difference from plan is calculated based on AAACM performance figures to two decimal places, and traffic lighting is based on the unrounded % difference from plan.

## Annex 15: Redundancies

### Redundancies (by headcount)

During the quarter, July to September 2010, there were 432 compulsory redundancies. Of the 432 compulsory redundancies 112 (25.9%) were clinical and 320 (74.1%) were non-clinical. These include data from SHAs, PCTs, trusts and foundation trusts.

	Compulsory redundancies for clinical staff	Compulsory redundancies for non-clinical staff	Total Compulsory redundancies
NHS England	112	320	432

Please note: The figures for Q2 2010/11 are not comparable with 2009/10 data. Redundancy data for 2009/10 did not include foundation trusts whereas they are included in the 2010/11 data.