



Statistical Bulletin

Abortion Statistics, England and Wales: 2009

This bulletin summarises information from the abortion notification forms returned to the Chief Medical Officers of England and Wales in respect of abortions carried out in England and Wales in 2009.

KEY FACTS

In 2009, for women resident in England and Wales:

- the total number of abortions was 189,100, compared with 195,296 in 2008, a fall of 3.2%
- the age-standardised abortion rate was 17.5 per 1,000 resident women aged 15-44, compared with 18.2 in 2008
- the abortion rate was highest at 33 per 1,000, for women aged 19, 20 & 21, each lower than in 2008
- the under-16 abortion rate was 4.0 and the under-18 rate was 17.6 per 1,000 women, both lower than in 2008
- 94% of abortions were funded by the NHS; of these, over half (60%) took place in the independent sector under NHS contract
- 91% of abortions were carried out at under 13 weeks gestation; 75% were at under 10 weeks
- medical abortions accounted for 40% of the total
- 2,085 abortions (1%) were under ground E, risk that the child would be born handicapped

Non-residents:

- in 2009, there were 6,643 abortions for non-residents carried out in hospitals and clinics in England and Wales (6,862 in 2008)

Contents

Introduction

Data quality

Overview

Analysis and commentary

Recommendations from the
National Statistics Disclosure
Review

Editorial notes

Index to tables

Reference tables

Bulletin 2010/01

Published May 2010

Free of charge

© Crown Copyright 2010

1. Introduction

1.1 This is the eighth Statistical Bulletin presenting statistics of legally induced abortions in England and Wales and covers those that took place in 2009. The format of the tables presented in this bulletin reflects the recommendations made in the ONS disclosure review (see Section 5 for further information).

1.2 The first bulletin, published by the Department of Health in October 2003, covered abortions in 2002 and was revised to incorporate the final 2002 figures in July 2004 in an Internet-only publication. Statistics for 2003 were first published in August 2004 and more detail was published in July 2005 on the Internet at the same time as statistics for 2004 were published. Statistics for 2005 - 2008 were published in the summer of the following years. Statistics for earlier years were published by the Office for National Statistics – *Abortion Statistics*, Series AB nos. 1 to 28.

1.3 The information collected on the abortion notification form (HSA4) was amended during 2002. Details of the changes are in Appendix A.

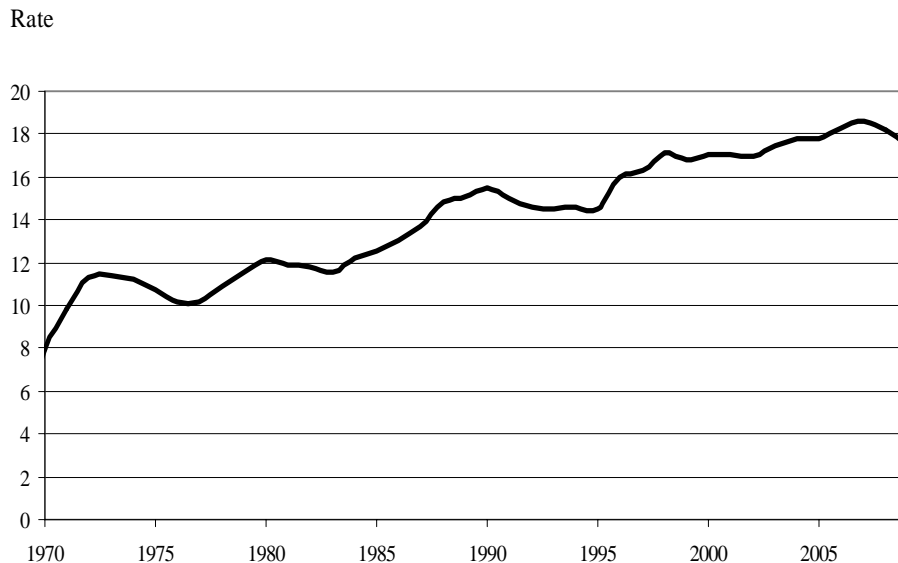
Data quality

2.1 Incomplete and incorrectly completed forms are returned to practitioners for completion and clarification. In a very small number of cases (about one-quarter of one percent), the information remains unavailable at the time of publication. Date of birth was missing from 20 records in 2009, gestation information from 84, postcodes from 36 and grounds from 84.

2.2 Records with missing ages were assigned to the 20-24 age group. Missing gestations were imputed as 6, 7, 8, 9 or 10 weeks in equal distribution unless method of abortion or diagnosis suggested otherwise. Missing postcodes were imputed with a random postcode from within the main PCTs of other residents attending the same hospital or clinic. Missing grounds were imputed as ground C (see Section 4.2.1).

2.3 Abortion rates per 1,000 women for 2009 at a national level and at PCT level are calculated using 2008 mid-year population estimates for England, Wales, England and Wales, Primary Care Organisations and Local Health Boards.

Figure 1 Age-standardised abortion rate per 1,000 population aged 15-44, England and Wales, 1970 to 2009



3. Overview

3.1 In total there were 195,743 abortions notified as taking place in England and Wales in 2009.

3.2 There were 189,100 abortions to residents of England and Wales in 2009. This represents a rate 17.5 per 1,000 resident women aged 15-44 (age-standardised rate, see Abortion Statistics, Series AB no. 27 page vi). The age-standardised abortion rate peaked at 15.5 in 1990 but remained below 15 until 1995; it then rose to 17.2 in 1998. From 1999 to 2002 the rate remained level at just over 17. The rate rose again to 18.6 in 2007 and dropped in 2008 to 18.2 and again in 2009 to 17.5 (see *Figure 1* and Table 1).

3.3 In 2009, there were 6,643 abortions to residents of other countries compared with 6,862 in 2008. Principally, these non-residents were from Northern Ireland (17%) and the Irish Republic (67%). The number of abortions to non-residents remained between 9,000 and 10,000 in the period 1995 to 2003. The 2009 total is the lowest in any year since 1969 (see Table 1 and Table 12a).

4. Analysis and commentary (England and Wales residents only)

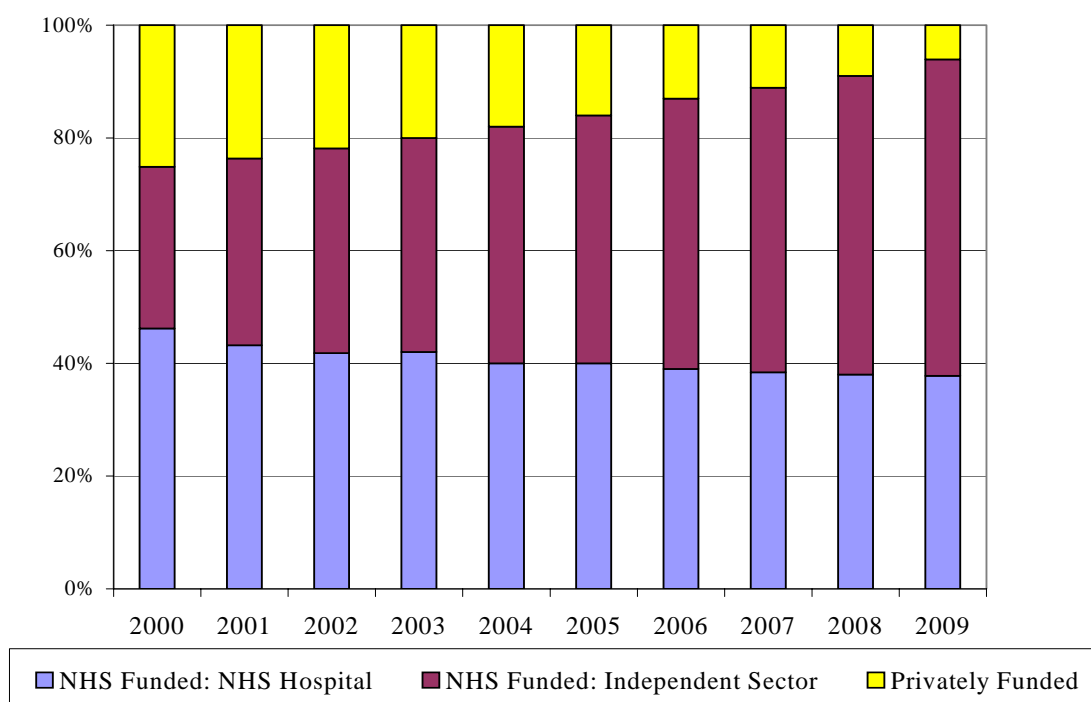
4.1 Location and funding of abortions

4.1.1 Except in an emergency, any treatment for the termination of pregnancy can only be carried out in an NHS hospital or in a place approved for the purpose by the Secretary of State, and after 24 weeks, only in an NHS hospital. Through contractual arrangements with Primary Care Organisations (PCOs), some approved independent sector places perform NHS-funded abortions.

4.1.2 Table 3i and *Figure 2* show that in 2009, 38% of abortions were performed in NHS hospitals and 56% in approved independent sector places under NHS contract (previously named NHS Agency), making a total of 94% of abortions funded by the NHS. The remaining 6% were privately funded. The proportion performed under NHS contract has been rising steadily since this information was collected in 1981, and more rapidly since 2001¹, while the proportions of NHS hospital and private abortions has been falling.

¹ Start of Government's Sexual Health and HIV Strategy.

Figure 2 Abortions by purchaser, England and Wales, 2000 to 2009



4.2 Statutory grounds for abortion

4.2.1 A legally induced abortion must be certified by two registered medical practitioners as justified under one or more of the following grounds:

- A the continuance of the pregnancy would involve risk to the life of the pregnant woman greater than if the pregnancy were terminated (Abortion Act, 1967 as amended, section 1(1)(c))
- B the termination is necessary to prevent grave permanent injury to the physical or mental health of the pregnant woman (section 1(1)(b))
- C the pregnancy has not exceeded its twenty-fourth week and that the continuance of the pregnancy would involve risk, greater than if the pregnancy were terminated, of injury to the physical or mental health of the pregnant woman (section 1(1)(a))
- D the pregnancy has not exceeded its twenty-fourth week and that the continuance of the pregnancy would involve risk, greater than if the pregnancy were terminated, of injury to the physical or mental health of any existing children of the family of the pregnant woman (section 1(1)(a))
- E there is a substantial risk that if the child were born it would suffer from such physical or mental abnormalities as to be seriously handicapped (section 1(1)(d))

or in an emergency, certified by the operating practitioner as immediately necessary:

- F to save the life of the pregnant woman (section 1(4))
- G to prevent grave permanent injury to the physical or mental health of the pregnant woman (section 1(4))

4.2.2 In 2009, the vast majority (97%) of abortions were undertaken under ground C and a further 1% under ground D. A similar proportion were carried out under ground E. Grounds A and B together accounted for less than a half percent of abortions. The proportion of ground C abortions has risen steadily with a corresponding reduction in ground D cases. (See Table 3ii.) Less than half a per cent of ground C only terminations were reported as being performed because of a risk to the woman's physical health. Abortions are rarely performed under grounds F or G.

4.2.3 Chromosomal abnormalities were reported for about a third (37%) of cases under ground E, congenital malformations in about 49%. The most commonly reported malformations were of the nervous system (24% of all ground E cases) and the cardiovascular system (8%). Down's syndrome (22% of all ground E cases) was the most commonly reported chromosomal abnormality (Table 9; specific groups are shown only where there are 10 or more cases in total. See Section 5). Some other conditions may be available by ICD 10 code on request.

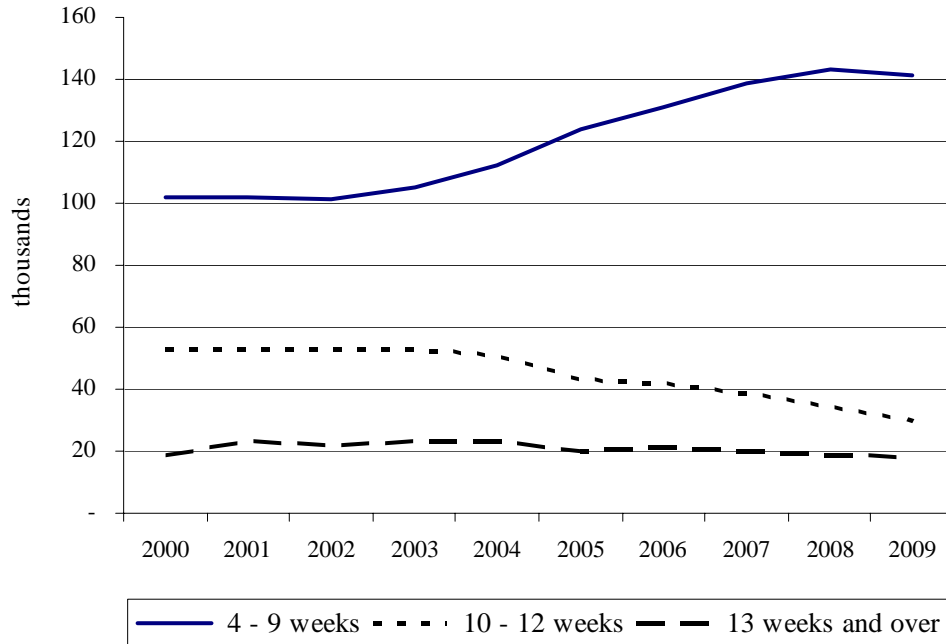
4.2.4 As in 2008 and each year since 1999, fewer than 10 abortions under ground E in 2009 were associated with rubella.

4.3 Gestation period

4.3.1 The vast majority of abortions are performed at under 13 weeks gestation. In 2009, about 75% were at under 10 weeks and a further 16% at 10-12 weeks. The proportion at 13 weeks or more was 9% in 2009. The corresponding percentages for 2008 were 73%, 17% and 10% respectively showing a continuing increase in the proportion of abortions that were performed under 10 weeks (Table 3iii and Figure 3).

4.3.2 The latest data for 2009 show that progress continues to be made to increase early access: 74% of NHS funded abortions took place at under 10 weeks compared with 51% in 2002. This represents a 45% increase in the

Figure 3 Numbers of abortions by gestation weeks, 2000-2009



proportion of abortions taking place at under 10 weeks between 2002 and 2009 compared with a 7% rise in the total number of abortions over the same period. (See Table A.) The percentage of NHS funded abortions at under 10 weeks gestation varies between PCTs from 47% - 85%. Department of Health policy is that women who are legally entitled to an abortion should have access to the procedure as soon as possible. Evidence shows that the risk of complications increases the later the gestation.

Year	%
2002	51
2003	52
2004	56
2005	63
2006	65
2007	68
2008	72
2009	74

4.3.3 Abortions where gestation has exceeded its twenty-fourth week account for less than 0.1% of the total. There were 136 such abortions in 2009 (Table 5).

4.4 Age

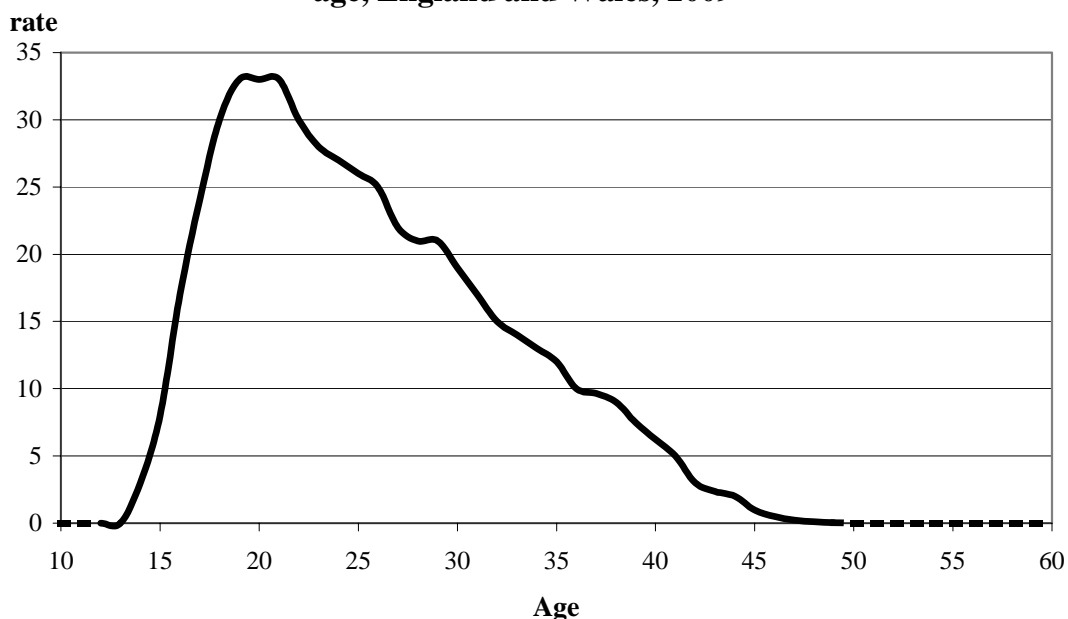
4.4.1 The abortion rate in 2009 was highest at 33 per 1,000, for women aged 19, 20 and 21. There were just under 1,050 abortions to women aged under 15 and about 740 to women aged 45 or over (see Table 4a and Figure 4).

4.4.2 The under-16 abortion rate was 4.0 in 2009 compared with 4.2 in 2008 and the under-18 rate was 17.6 in 2009, compared with 18.9 in 2008. Rates for women in most age groups were lower than in 2008. The biggest difference was in women aged 17 where the rate in 2009 was 24 compared with 27 in 2008.

4.5 Marital status

4.5.1 82% of abortions in 2009 were carried out for single women, a proportion that has risen slowly from 75% since 2000 (Table 3v).

Figure 4 Abortion rate per 1,000 population by single year of age, England and Wales, 2009



4.6 Ethnicity

4.6.1 The revised HSA4 forms introduced in 2002 allow for the recording of ethnicity, as self-reported by the women involved; this information was not previously recorded. Ethnicity was recorded on 94% of the forms received for 2009 compared with 80% in 2003. Of women whose ethnicity was recorded, in 2009, 76% were reported as White, 10% as Black or Black British and 9% as Asian or Asian British (Table 3vi).

Asian or Asian British	30%
Black or Black British	48%
Chinese or Other ethnic group	33%
Mixed	41%
White	32%

4.6.2 The percentage of women having an abortion in 2009 who had one or more previous abortions varies by ethnic group. 30% of Asian women having abortions in 2009 had previously had an abortion, compared with 48% of Black women (Table B above).

4.7 Previous abortions

4.7.1 In 2009, 34% of women undergoing abortions had one or more previous abortions. The proportion has risen from about 29% since 1998 (Table 3ix and Table 4b).

4.7.2 In 2009, 25% of abortions to women aged under 25 were repeat abortions (Table 11). Repeat unintended pregnancy and subsequent abortion is a complex issue associated with increased age as it allows longer time for exposure to pregnancy risks.

4.8 Previous obstetric history

4.8.1 In 2009, 49% of women undergoing abortions had one or more previous pregnancies that resulted in a live or stillbirth, a proportion virtually unchanged over the last 10 years. 15% of women had a previous pregnancy resulting in a miscarriage or ectopic pregnancy (Tables 3vii & 3viii).

4.9 Method of abortion

4.9.1 Different methods may be used to terminate a pregnancy, depending on the duration of gestation and other

circumstances relating to the individual woman. There is one principal medical method, involving the use of the abortifacient drug Mifegyne (mifepristone, also known as RU486). The main surgical methods are vacuum aspiration, recommended at up to 15 weeks gestation, and dilatation and evacuation (D&E) recommended where gestation is greater than 15 weeks. D&E may be used in combination with vacuum aspiration; such cases are recorded in the statistics as D&E.

4.9.2 Medical abortions accounted for 40% of the total in 2009. The proportion of medical abortions has more than doubled in the last five years. In 2009, 52% of abortions under 9 weeks were medical abortions compared with 18% in 2002. There has been a continuing upward trend in medical abortions since 1991 when Mifegyne was licensed for use in the UK (Table 3iv and Table 5).

4.9.3 Vacuum aspiration was used for 54% of abortions in 2009 and Dilatation and Evacuation (D&E) alone in about 5% (Table 3iv).

4.9.4 For abortions at 22 weeks or beyond, feticide is recommended prior to the evacuation of the uterus to stop the fetal heart. In 2009, 72% of abortions performed at 22 weeks and over were reported as preceded by a feticide and 22% were performed by a method whereby the fetal heart is stopped as part of the procedure. 3% of abortions at 22 weeks or beyond were confirmed as having no feticide. For the remaining 2%, at the time of publication, we had not been able to confirm whether feticide had been performed.

4.10 Length of stay

4.10.1 In 2009, about 520 (0.3%) women were reported as having a duration of stay of one or more nights. Just under half of these stays were for abortions performed at later gestations of 20 weeks and over (See Table C).

Table C
Percentage of abortions requiring a duration of stay of one or more nights, by gestation, 2009

Gestation weeks	(100%)
under 10	21%
10 -12	16%
13-19	15%
20 and over	48%

4.11 Complications

4.11.1 Complications were reported in about 300 cases in 2009, a rate of about 2 in every thousand abortions, the same as in 2008 (Table 8).

4.12 Selective terminations

4.12.1 In 2009, there were 71 abortions which were selective terminations. In 44 cases, 2 fetuses were reduced to 1 fetus.

4.12.2 In 2009, about two thirds (79%) of the selective terminations were performed under ground E.

4.13 Chlamydia screening

4.13.1 Analysis of returned data for Chlamydia for 2009 shows that 83% of women aged under 25 having abortions in 2009 were offered chlamydia screening. This is slightly higher than the proportion of all women screened which in 2009 was 79%.

4.14 Place of residence

4.14.1 Following the abolition of the English Health Authorities in April 2002, the place of residence details provided on the HSA4 form are allocated for analysis to Primary Care Organisations. For Wales, place of residence is allocated to their equivalents, Local Health Boards.

4.14.2 There were boundary changes for PCTs from 1st October 2006 with the number of PCTs reduced from 303 to 152.

5. Recommendations from the National Statistics Disclosure Review

In using and releasing health statistics there is a risk, generally with small numbers, of identifying individuals. To address this, the Department of Health asked the National Statistician to provide it with guidelines for interpreting the National Statistics Code of Practice and associated protocols in the handling of health statistics across the health community, in a way that balances data confidentiality risks with the public interest in the use of the figures. The Office for National Statistics (ONS) published a report on disclosure guidance for abortion statistics in July 2005 and a further report giving guidance for all health statistics was published in 2006. The report for abortions statistics can be found on the ONS website at:

<http://www.statistics.gov.uk/statbase/Product.asp?vlnk=11988>

The key recommendations can be found in Appendix B.

The 2009 Abortion Statistics bulletin applies the conclusions of the ONS disclosure review and guidance for abortion statistics. The guidance provides details on how to identify cells within tabulated statistics where the risks of a breach of confidentiality are unacceptable ("unsafe cells"). It then describes methods for reducing these risks.

For the bulletin, the risks identified have been reduced largely by redesigning tables. However, where table redesign proved to be impossible then suppression was applied to cells with fewer than 5 cases at national level or fewer than 10 cases at sub-national level and for highly sensitive variables such as gestation weeks by medical grounds. The same principles were also applied to tables showing rates and percentages.

In line with the commitment made in the 2004 abortions bulletin, three-year aggregate figures for 2006-2008 for some of the areas whose data are suppressed

each year due to small numbers were published in the 2008 bulletin.

Further three-year aggregate tables are planned for publication in the 2011 bulletin for the years 2009-2011.

6. Editorial Notes

Percentages are subject to rounding and totals may not agree with the sum of the component figures shown. Rates are also rounded.

The following symbols are used in the tables:

- . = not applicable
- .. = suppressed values

Enquiries about the data or requests for further information should be addressed to:

Abortion Statistics
Department of Health
Room 530B
Skipton House
80 London Road
London
SE1 6LH

e-mail:

<mailto:abortion.statistics@dh.gsi.gov.uk>

Extracts from this publication may be reproduced provided a reference to the source is given.

This bulletin for 2009, and previous bulletins for 2002-2008, can be found on the Department of Health website:

www.dh.gov.uk/publichealthstatistics

Data for 1991 to 2001 can be found on the Office for National Statistics website.

<http://www.statistics.gov.uk/statbase/product.asp?vlnk=68>

May 2010

Index to Tables

Table	Description
Table 1	Legal abortions: resident status and purchaser, 1968 to 2009
Table 2	Legal abortions: age by (i) purchaser, (ii) statutory grounds, (iii) gestation weeks, (iv) procedure, (v) marital status, (vi) ethnicity, (vii) parity, (viii) previous miscarriages, (ix) previous abortions, 2009
Table 3	Legal abortions: by (i) purchaser, (ii) statutory grounds, (iii) gestation weeks, (iv) procedure, (v) marital status, (vi) ethnicity, (vii) parity, (viii) previous miscarriages, (ix) previous abortions, 2000 to 2009
Table 4a	Legal abortions: by age, 2009
Table 4b	Legal abortions: number of previous abortions by age, 2009
Table 5	Legal abortions: gestation weeks by purchaser and method of abortion, 2009
Table 6	Legal abortions: gestation weeks by age and purchaser, 2009
Table 7a	Legal abortions: procedure by gestation weeks, 2009
Table 7b	Legal abortions: grounds by gestation weeks, 2009
Table 8	Legal abortions: complication rates by procedure and gestation weeks, 2009
Table 9	Legal abortions: principal medical condition for abortions performed under ground E, 2009
Table 10a	Legal abortions: numbers by Primary Care Organisation: England, Local Health Board: Wales, by age, 2009
Table 10b	Legal abortions: rates by Primary Care Organisation: England, Local Health Board: Wales, by age, 2009
Table 11	Legal abortions: purchaser, gestation, Sexual Health Indicator and repeat abortions, by Primary Care Organisation: England, Local Health Board: Wales, 2009
Table 12a	Legal abortions: non residents of England & Wales by country of residence, 2009
Table 12b	Legal abortions: non residents of England & Wales by (i) age, (ii) statutory grounds and (iii) gestation, 2009
Table 12c	Legal abortions: country of residence by age and gestation, 2009

Table 1 Legal abortions: resident status and purchaser, 1968 to 2009

England and Wales, residents and non-residents

Year	Total	Residents					Rate per 1,000 women residents aged 15-44		Non-residents Total
		Total	NHS Funded		Privately Funded	ASR*	Crude		
			Hospital	Independent Sector					
1968 ¹	23,641	22,332	14,492	.	7,840	.	.	1,309	
1969	54,819	49,829	33,562	.	16,267	5.2	5.3	4,990	
1970	86,565	75,962	47,370	.	28,592	8.0	8.1	10,603	
1971	126,777	94,570	53,455	.	41,115	9.9	10.1	32,207	
1972	159,884	108,565	56,861	.	51,704	11.3	11.5	51,319	
1973	167,149	110,568	55,456	.	55,112	11.4	11.7	56,581	
1974	162,940	109,445	56,076	.	53,369	11.2	11.5	53,495	
1975	139,702	106,224	50,941	.	55,283	10.8	11.1	33,478	
1976	129,673	101,912	50,569	.	51,343	10.2	10.5	27,761	
1977	133,004	102,677	52,530	.	50,147	10.1	10.5	30,327	
1978	141,558	111,851	55,040	.	56,811	10.9	11.3	29,707	
1979	149,746	120,611	55,558	.	65,053	11.5	12.0	29,135	
1980	160,903	128,927	60,594	.	68,333	12.1	12.6	31,976	
1981	162,480	128,581	61,103	2,343	65,135	11.9	12.4	33,899	
1982	163,045	128,553	62,409	4,425	61,719	11.8	12.3	34,492	
1983	162,161	127,375	62,609	4,614	60,152	11.5	12.1	34,786	
1984	169,993	136,388	64,823	4,912	66,653	12.2	12.8	33,605	
1985	171,873	141,101	65,176	5,929	69,996	12.5	13.1	30,772	
1986	172,286	147,619	67,451	6,819	73,349	13.0	13.5	24,667	
1987	174,276	156,191	69,442	8,041	78,708	13.7	14.2	18,085	
1988	183,798	168,298	69,103	9,357	89,838	14.8	15.3	15,500	
1989	183,974	170,463	70,722	9,200	90,541	15.1	15.5	13,511	
1990	186,912	173,900	73,517	9,582	90,801	15.5	15.8	13,012	
1991	179,522	167,376	75,172	9,197	83,007	15.0	15.2	12,146	
1992	172,069	160,501	79,543	11,982	68,976	14.6	14.8	11,568	
1993	168,714	157,846	84,071	14,835	58,940	14.5	14.7	10,868	
1994	166,876	156,539	85,243	19,551	51,745	14.6	14.6	10,337	
1995	163,638	154,315	84,478	24,363	45,474	14.5	14.4	9,323	
1996	177,495	167,916	88,410	33,255	46,251	16.0	15.7	9,579	
1997	179,746	170,145	86,414	37,472	46,259	16.3	15.9	9,601	
1998	187,402	177,871	87,568	44,332	45,971	17.2	16.6	9,531	
1999	183,250	173,701	84,992	43,266	45,443	16.8	16.2	9,549	
2000	185,375	175,542	81,074	50,400	44,068	17.0	16.3	9,833	
2001	186,274	176,364	76,166	58,445	41,753	17.1	16.3	9,910	
2002	185,385	175,932	73,544	63,938	38,450	17.0	16.2	9,453	
2003	190,660	181,582	75,791	69,133	36,658	17.5	16.6	9,078	
2004	194,498	185,713	75,328	77,289	33,096	17.8	16.9	8,785	
2005	194,353	186,416	74,744	82,518	29,154	17.8	17.0	7,937	
2006	201,173	193,737	75,328	92,494	25,915	18.3	17.5	7,436	
2007	205,598	198,499	75,518	100,195	22,786	18.6	17.9	7,099	
2008	202,158	195,296	74,433	103,905	16,958	18.2	17.6	6,862	
2009	195,743	189,100	71,477	106,161	11,462	17.5	17.0	6,643	

¹ 1968 figures contain only 8 months data as the legislation came into effect on 27 April 1968

. Not applicable

* Rates for all women residents age-standardised to the European population for ages 15-44

Table 2 Legal abortions: age by (i) purchaser, (ii) statutory grounds, (iii) gestation weeks, (iv) procedure, (v) marital status, (vi) ethnicity, (vii) parity, (viii) previous miscarriages, (ix) previous abortions, 2009

England and Wales, residents		numbers			
	All ages ¹	Under 20	20-34	35 and over	
All legal abortions	189,100	40,067	122,084	26,949	
(i) Purchaser					
NHS Funded: NHS Hospital	71,477	16,951	45,341	9,185	
NHS Funded: Independent Sector	106,161	22,406	69,042	14,713	
Privately Funded	11,462	710	7,701	3,051	
(ii) Statutory grounds					
A (alone or with B, C or D) or F or G	56	..	42	..	
B (alone)	391	86	257	48	
B (with C or D)	60	..	41	..	
C (alone)	184,000	39,696	118,713	25,591	
D (alone, or with C)	2,508	175	1,814	519	
E (alone or with A, B, C, or D)	2,085	95	1,217	773	
(iii) Gestation weeks					
3 - 9	141,326	27,747	92,681	20,898	
10 - 12	29,953	7,511	18,717	3,725	
13 -19	15,035	4,091	9,005	1,939	
20 and over	2,786	718	1,681	387	
(iv) Procedure					
Surgical	113,443	23,791	72,641	17,011	
Medical	75,657	16,276	49,443	9,938	
(v) Marital status					
Single no partner	49,759	13,404	32,148	4,207	
Single with partner	74,226	17,586	49,313	7,327	
Single not stated	19,010	5,353	12,055	1,602	
Married/civil partnership	26,971	245	16,846	9,880	
Separated/widowed/divorced	4,569	79	2,611	1,879	
Not known & not stated	14,565	3,400	9,111	2,054	
(vi) Ethnicity					
White - British	122,052	30,323	74,981	16,748	
White - Irish	1,056	175	697	184	
White - Any other White background	12,495	1,086	9,383	2,026	
Mixed - White and Black Caribbean	1,645	540	1,017	88	
Mixed - White and Black African	978	288	598	92	
Mixed - White and Asian	609	151	411	47	
Mixed - Any Other	1,580	337	1,051	192	
Asian or Asian British - Indian	5,361	347	4,107	907	
Asian or Asian British - Pakistani	3,218	335	2,329	554	
Asian or Asian British - Bangladeshi	1,618	216	1,193	209	
Asian - Any other Asian background	5,106	464	3,611	1,031	
Black or Black British - Caribbean	5,287	1,062	3,462	763	
Black or Black British - African	11,492	1,391	8,295	1,806	
Black or Black British - Any other	883	178	594	111	
Chinese	1,973	173	1,504	296	
Any other ethnic group	1,925	213	1,360	352	
Not known/not stated	11,822	2,788	7,491	1,543	
(vii) Parity (number of previous pregnancies resulting in live or still birth)					
0	95,598	35,280	56,311	4,007	
1+	93,502	4,787	65,773	22,942	
(viii) Number of previous pregnancies resulting in spontaneous miscarriage and ectopic pregnancies					
0	160,217	38,359	102,290	19,568	
1+	28,883	1,708	19,794	7,381	
(ix) Number of previous pregnancies resulting in abortion under the Act					
0	125,710	34,582	75,761	15,367	
1+	63,390	5,485	46,323	11,582	

¹ Age not stated have been distributed pro-rata across age group 20-24

Table 3 Legal abortions: by (i) purchaser, (ii) statutory grounds, (iii) gestation weeks, (iv) procedure, (v) marital status, (vi) ethnicity, (vii) parity, (viii) previous miscarriages, (ix) previous abortions, 2000 to 2009

England and Wales, residents	percentages									
	2000	2001	2002	2003	2004	2005	2006	2007	2008	2009
All legal abortions (=100%)	175,542	176,364	175,932	181,582	185,713	186,416	193,737	198,499	195,296	189,100
(i) Purchaser										
NHS Funded: NHS Hospital	46	43	42	42	40	40	39	38	38	38
NHS Funded: Independent Sector	29	33	36	38	42	44	48	50	53	56
Privately Funded	25	24	22	20	18	16	13	11	9	6
(ii) Statutory grounds										
A (alone or with B, C or D) or F or G	0	0	0	0	0	0	0	0	0	0
B (alone or with C or D)	1	1	1	1	1	1	1	0	0	0
C (alone)	92	93	94	94	95	96	97	98	98	97
D (alone, or with C)	5	5	4	3	3	2	1	1	1	1
E (alone or with A, B, C, or D)	1	1	1	1	1	1	1	1	1	1
(iii) Gestation weeks										
3 - 9	58	58	57	58	60	67	68	70	73	75
10 - 12	30	30	30	29	27	23	22	20	17	16
13 - 19	10	11	11	11	11	9	9	9	8	8
20 and over	1	2	2	2	2	1	2	1	1	1
(iv) Procedure										
Vacuum aspiration	81	81	81	80	76	71	64	60	57	54
Dilatation and evacuation	7	6	4	3	4	5	6	5	5	5
Other surgical	0	0	0	0	0	0	0	0	0	0
Antiprogesterone with or without prostaglandin	11	12	14	16	19	24	30	34	37	40
Other medical agent	1	1	0	0	0	0	0	0	0	0
(v) Marital status ¹										
Single no partner	.	.	25	35	31	33	32	31	29	29
Single with partner	.	.	17	30	29	31	36	42	42	43
Single not stated	.	.	32	11	17	15	12	8	9	11
Single (total)	75	76	75	76	77	79	80	81	81	82
Married/civil partnership	19	19	20	19	18	17	17	16	16	15
Separated	3	3	3	2	2	2	2	2	2	2
Widowed	0	0	0	0	0	0	0	0	0	0
Divorced	2	2	2	2	2	2	2	1	1	1
(vi) Ethnicity ¹										
Asian or Asian British	.	.	7	7	7	8	8	8	8	9
Black or Black British	.	.	12	12	13	13	12	11	10	10
White	.	.	75	76	75	74	75	75	76	76
Chinese or other ethnic group	.	.	3	3	3	3	2	3	3	2
Mixed	.	.	3	2	2	2	3	3	3	3
(vii) Parity (number of previous pregnancies resulting in live or stillbirth)										
0	53	53	53	53	53	53	53	53	52	51
1+	47	47	47	47	47	47	47	47	48	49
(viii) Number of previous pregnancies resulting in spontaneous miscarriage and ectopic pregnancies										
0	.	.	87	87	86	86	86	86	85	85
1+	.	.	13	13	14	14	14	14	15	15
(ix) Number of previous pregnancies resulting in abortion under the Act										
0	70	69	69	68	68	68	68	68	67	66
1+	30	31	31	32	32	32	32	32	33	34

¹ Percentages exclude not known and not stated

. Information was not collected

Note: percentages are rounded and may not add up to 100

Table 4a Legal abortions: by age, 2009
England and Wales, residents

Age ¹	Total	Crude rates per 1,000 women	Age	Total	Rates per 1,000 women
All ages	189,100	17			
Under 15	1,047	2	30-34	26,701	16
Under 14	136	0	30	6,472	19
14	911	3	31	5,577	17
			32	5,196	15
Under 16	3,823	4	33	4,805	14
Under 18	17,916	18	34	4,651	13
15-19	39,020	23	35-39	18,817	9
15	2,776	8	35	4,384	12
16	5,682	17	36	4,113	10
17	8,411	24	37	3,888	10
18	10,521	30	38	3,523	9
19	11,630	33	39	2,909	7
20-24	54,749	30	40-44	7,395	4
20	11,871	33	40	2,495	6
21	11,627	33	41	1,930	5
22	10,962	30	42	1,385	3
23	10,389	28	43	945	2
24	9,900	27	44	640	2
25-29	40,634	23	45-49	720	0
25	9,021	26	45	375	1
26	8,688	25	46	179	0
27	8,065	22	47	103	0
28	7,628	21	48	45	0
29	7,232	21	49	18	0
			50 and over	17	.

¹ Age not stated have been distributed pro-rata across age group 20-24

Rates for all ages, under 14, under 15, under 16 and under 18 are based on 2008 mid year population estimates; 15-44, 13, 13-14, 13-15, and 15-17 respectively

. Rate not available

Table 4b Legal abortions: number of previous abortions by age¹, 2009
England and Wales, residents

Number of previous abortions	Total	under 18	18 - 24	25 - 29	30+
0	125,710	16,486	55,086	23,817	30,321
1	48,040	1,341	17,746	12,392	16,561
2	11,602	3,262	4,933
3	2,637	828	1,243
4	779	242	382
5	214	70	127
6	70	48
7 or more	48	35
Total	189,100	17,916	76,900	40,634	53,650

¹ Age not stated have been distributed pro-rata across age group 20-24

.. values are suppressed where totals are less than 10 (0 - 9) or where a presented total would reveal the suppressed value

Table 5 Legal abortions: gestation weeks by purchaser and method of abortion, 2009

England and Wales, residents

Gestation weeks	Total number of abortions	Purchaser (%)			Method (%)	
		NHS Funded		Privately Funded	Medical	Surgical
		NHS Hospital	Independent Sector			
Total	189,100	38	56	6	40	60
3 and 4	2,461	4	73	24	51	49
5	13,124	18	68	14	64	36
6	34,087	29	61	9	61	39
7	39,288	33	61	6	48	52
8	32,618	47	50	4	42	58
9	19,748	51	46	3	21	79
10	14,485	55	42	3	12	88
11	8,836	49	47	3	14	86
12	6,632	47	49	3	16	84
13	4,391	37	60	4	20	80
14	3,377	30	67	4	24	76
15	2,212	30	66	4	28	72
16	1,790	28	67	5	28	72
17	1,404	25	71	4	25	75
18	1,151	19	76	5	22	78
19	710	21	75	3	25	75
20	814	25	71	4	27	73
21	742	30	66	3	36	64
22	559	29	66	5	28	72
23 ¹	535	24	72	4	21	79
24 and over	136	100	.	.	87	13
24	30
25	18
26-27	27
28-31	32
32 and over	29
Total	189,100	38	56	6	40	60
3-8	121,578	33	59	8	52	48
9-12	49,701	51	46	3	17	83
13-19	15,035	30	66	4	24	76
20-23	2,650	27	69	4	28	72
24 and over	136	100	0	0	87	13

¹ 24 weeks and 0 days gestation is included in 23 weeks

.. Based on fewer than 10 (0-9) cases

. Not applicable

Note: percentages are rounded and may not add up to 100

Table 6 Legal abortions: gestation weeks by age and purchaser, 2009

England and Wales, residents

percentages

Purchaser	Gestation weeks	All ages ¹	Under 20	20-34	35 and over
Total	Total number (=100%)	189,100	40,067	122,084	26,949
	3-9	75	69	76	78
	10-12	16	19	15	14
	13-19	8	10	7	7
	20 and over	1	2	1	1
NHS Funded: NHS Hospital	Total number (=100%)	71,477	16,951	45,341	9,185
	3-9	71	70	72	69
	10-12	22	23	21	20
	13-19	6	6	6	9
	20 and over	1	0	1	2
NHS Funded: Independent Sector	Total number (=100%)	106,161	22,406	69,042	14,713
	3-9	76	68	78	81
	10-12	13	16	12	11
	13-19	9	13	9	7
	20 and over	2	3	2	1
Privately Funded	Total number (=100%)	11,462	710	7,701	3,051
	3-9	86	77	86	87
	10-12	8	12	8	8
	13-19	5	9	5	5
	20 and over	1	3	1	1

¹ Age not stated have been distributed pro-rata across age group 20-24

Note: percentages are rounded and may not add up to 100

Table 7a Legal abortions: procedure by gestation weeks, 2009

England and Wales, residents

percentages

Procedure	Gestation weeks					
	Total	3 - 9	10 - 12	13 - 14	15 - 19	20 & over
Total abortions (=100%)	189,100	141,326	29,953	7,768	7,267	2,786
Surgical	60	52	87	78	74	69
Vacuum Aspiration	54	52	84	56	4	0
Dilatation and Evacuation	5	1	3	23	69	44
Feticide with a surgical evacuation ¹	0	0	0	0	1	25
Medical	40	48	13	22	26	31
Antiprogestosterone with or without prostaglandin	40	48	13	21	24	17
Other medical agent	0	0	0	0	2	0
Feticide with a medical evacuation	0	0	0	0	0	14

¹includes feticide with no method of evacuation and surgical 'other'.

Note: percentages are rounded and may not add to 100

Table 7b Legal abortions: grounds by gestation weeks, 2009

England and Wales, residents

numbers

Grounds	Gestation weeks				
	Total	3 - 9	10 - 12	13 - 19	20 & over
A (alone, or with B, C, D) or F or G	56	24	14
B (alone, or with C or D)	451	340	89
C (alone)	184,000	139,184	28,961	13,819	2,036
D (alone, or with C)	2,508	1,757	581
E (alone, or with A, B, C or D)	2,085	21	308	1,020	736
Total	189,100	141,326	29,953	15,035	2,786

.. total less than 10 (0-9) or where a presented total would reveal the suppressed value.

Table 8 Legal abortions: complication¹ rates by procedure and gestation weeks, 2009

England and Wales, residents

complication rates per 1,000 abortions

Gestation weeks	Total all procedures	Procedure	
		Surgical	Medical
Total complications (numbers)	288	117	171
Rate, all gestations	2	1	2
3 - 9	1	1	2
10 - 12	2	2	4
13 - 19	2	1	6
20 & over	8	..	23

¹ Complications include: haemorrhage, uterine perforation and/or sepsis and are those reported up to the time of discharge from the place of termination

..Based on fewer than 10 (0-9) cases

Table 9 Legal abortions: principal medical condition for abortions performed under ground E, 2009

England and Wales, residents		numbers	
ICD-10 code ¹	Condition	Total	Over 24 weeks gestation
Total grounds E alone or with any other		2,085	136 ²
Q00-Q89	Congenital malformations total	1015	110
Q00-Q07	the nervous system total	496	67
Q00	anencephaly	159	..
Q01	encephalocele	26	..
Q03	hydrocephalus	26	..
Q04	other malformations of the brain	93	24
Q05	spina bifida	114	..
Q02, Q06, Q07	other	78	25
Q10-Q89	other congenital malformations total	519	43
Q20-Q28	the cardiovascular system	169	19
Q30-Q34	the respiratory system	15	..
Q60-Q64	the urinary system	94	..
Q65-Q79	the musculoskeletal system	159	12
Q10-Q18, Q35-Q56, Q80-Q89	other	82	..
Q90-Q99	Chromosomal abnormalities total	775	18
Q90	Down's syndrome	468	..
Q910-Q913	Edwards' syndrome	144	..
Q914-Q917	Patau's syndrome	45	..
Q92-Q99	other	118	..
	Other conditions total ³	295	8
P00-P04	fetus affected by maternal factors	78	..
P05-P08	fetal disorders relating to gestation and growth	17	..
P832-P833	hydrops fetalis not due to haemolytic disease	33	..
Z80-Z84	family history of heritable disorder	144	..
O30	multiple gestation	13	..
	other ⁴	10	..

¹ ICD-10 codes are taken from the International Statistical Classification of Diseases and Related Health Problems (Tenth Revision) published by the World Health Organisation (WHO)

Figures for specific groups shown only where there are 10 or more cases in total

² Over 24 week total includes abortions carried out under grounds A, B, F or G.

³ The total for other conditions over 24 weeks has not been suppressed, as the category's indistinctness makes it less sensitive and inclusion of the figure in turn enables the total for chromosomal abnormalities to be given.

⁴ Includes cases where insufficient detail was available to allocate an ICD10 code.

.. Fewer than 10 cases (0-9) or where a presented figure would reveal a suppressed value.

Table 10a Legal abortions: numbers by Primary Care Organisation: England, Local Health Board: Wales, by age, 2009

Residents

numbers

Primary Care Organisation/ Local Health Board	Total number of abortions	Age ¹					
		Under 18	18-19	20-24	25-29	30-34	35 +
ENGLAND & WALES	189,100	17,916	22,151	54,749	40,634	26,701	26,949
ENGLAND	180,259	16,920	21,037	52,009	38,791	25,633	25,869
NORTH EAST SHA	7,220	911	981	2,249	1,428	878	773
5ND County Durham	1,147	143	143	359	225	148	129
5J9 Darlington	277	42	36	69	59	41	30
5KF Gateshead	457	71	70	118	96	57	45
5D9 Hartlepool	340	45	46	115	59	41	34
5KM Middlesbrough	499	63	64	165	110	46	51
5D7 Newcastle	979	93	129	321	189	123	124
5E1 North Tees	602	65	88	178	127	76	68
5D8 North Tyneside	591	63	70	173	134	75	76
TAC Northumberland	698	79	87	223	135	85	89
5QR Redcar & Cleveland	373	66	50	108	71	47	31
5KG South Tyneside	377	65	67	111	74	33	27
5KL Sunderland Teaching	880	116	131	309	149	106	69
NORTH WEST SHA	24,874	2,721	3,246	7,770	5,069	3,087	2,981
5HG Ashton, Leigh & Wigan	1,048	144	158	331	165	126	124
5CC Blackburn & Darwen Teaching	484	42	58	137	112	74	61
5HP Blackpool	530	58	83	164	101	64	60
5HQ Bolton	1,009	97	144	340	201	114	113
5JX Bury	701	67	99	219	133	94	89
5NP Central & Eastern Cheshire	1,151	110	154	351	218	154	164
5NG Central Lancashire	1,454	155	194	495	282	140	188
5NE Cumbria	1,218	174	183	339	218	143	161
5NH East Lancashire Teaching	1,169	163	164	352	207	125	158
5NM Halton & St Helens	1,086	140	125	340	227	125	129
5NQ Heywood, Middleton & Rochdale	790	89	99	242	166	111	83
5J4 Knowsley	703	84	86	222	152	86	73
5NL Liverpool	2,180	198	264	765	454	258	241
5NT Manchester	2,895	227	301	936	690	435	306
5NF North Lancashire Teaching	824	104	125	257	159	79	100
5J5 Oldham	772	104	106	216	148	113	85
5F5 Salford Teaching	1,002	88	110	308	266	135	95
5NJ Sefton	905	103	125	291	187	106	93
5F7 Stockport	895	101	119	246	189	131	109
5LH Tameside & Glossop	974	145	133	286	205	90	115
5NR Trafford	747	71	109	218	142	90	117
5J2 Warrington	691	81	82	205	132	78	113
5NN West Cheshire	596	69	88	167	120	69	83
5NK Wirral	1,050	107	137	343	195	147	121
YORKSHIRE & THE HUMBER SHA	16,388	1,778	2,108	4,993	3,463	1,985	2,061
5JE Barnsley	695	89	81	205	157	87	76
5NY Bradford & Airedale teaching	1,721	163	181	539	418	221	199
5J6 Calderdale	709	73	104	208	146	93	85
5N5 Doncaster	1,125	123	127	350	256	140	129
5NW East Riding of Yorkshire	662	92	96	194	105	79	96
5NX Hull Teaching	927	89	120	320	206	98	94
5N2 Kirklees	1,291	158	165	363	269	180	156
5N1 Leeds	2,884	267	389	878	589	356	405
5AN North East Lincolnshire	549	95	71	172	118	48	45
5EF North Lincolnshire	403	53	60	115	75	51	49
5NV North Yorkshire & York	1,719	172	228	496	348	218	257
5H8 Rotherham	807	87	91	263	167	87	112
5N4 Sheffield	1,841	185	261	581	377	203	234
5N3 Wakefield District	1,055	132	134	309	232	124	124

Table 10a Legal abortions: numbers by Primary Care Organisation: England, Local Health Board: Wales, by age, 2009

Residents

numbers

Primary Care Organisation/ Local Health Board	Total number of abortions	Age ¹					
		Under 18	18-19	20-24	25-29	30-34	35 +
ENGLAND & WALES	189,100	17,916	22,151	54,749	40,634	26,701	26,949
ENGLAND	180,259	16,920	21,037	52,009	38,791	25,633	25,869
EAST MIDLANDS SHA	11,904	1,249	1,565	3,556	2,367	1,549	1,618
5ET Bassetlaw	279	32	51	75	52	36	33
5N7 Derby City	815	81	105	241	210	87	91
5N6 Derbyshire County	1,520	178	207	426	266	213	230
5PC Leicester City	1,374	74	138	462	336	199	165
5PA Leicestershire County & Rutland	1,628	189	213	458	299	208	261
5N9 Lincolnshire	1,538	203	237	439	272	171	216
5PD Northamptonshire Teaching	2,095	221	250	605	419	290	310
5EM Nottingham City	1,125	96	153	395	222	146	113
5N8 Nottinghamshire County	1,530	175	211	455	291	199	199
WEST MIDLANDS SHA	20,180	2,122	2,537	6,009	4,112	2,654	2,746
5PG Birmingham East & North	2,010	211	243	605	428	283	240
5MD Coventry Teaching	1,841	161	203	576	410	252	239
5PE Dudley	941	98	125	269	182	116	151
5MX Heart of Birmingham Teaching	1,872	128	199	568	436	308	233
5CN Herefordshire	459	59	55	135	77	61	72
5PH North Staffordshire	577	64	76	175	107	68	87
5PF Sandwell	1,257	134	152	364	271	178	158
5M2 Shropshire County	617	89	78	180	86	83	101
TAM Solihull	632	67	89	195	119	67	95
5M1 South Birmingham	1,492	141	205	457	318	196	175
5PK South Staffordshire	1,874	240	272	534	374	212	242
5PJ Stoke on Trent	879	88	116	307	169	88	111
5MK Telford & Wrekin	564	72	69	161	114	77	71
5M3 Walsall Teaching	1,063	143	132	309	209	132	138
5PM Warwickshire	1,699	179	216	463	357	214	270
5MV Wolverhampton City	1,126	104	126	343	238	163	152
5PL Worcestershire	1,277	144	181	368	217	156	211
EAST OF ENGLAND SHA	16,211	1,549	1,894	4,489	3,364	2,240	2,675
5P2 Bedfordshire	1,123	128	133	305	221	162	174
5PP Cambridgeshire	1,292	145	143	341	254	166	243
5P3 East & North Hertfordshire	1,672	141	194	473	334	231	299
5PR Great Yarmouth & Waveney	560	67	68	169	113	79	64
5GC Luton	986	64	111	293	246	156	116
5PX Mid Essex	922	102	96	241	190	118	175
5PQ Norfolk	1,591	156	188	477	318	197	255
5PW North East Essex	723	80	102	211	141	89	100
5PN Peterborough	695	60	86	216	151	87	95
5P1 South East Essex	1,014	99	143	281	194	137	160
5PY South West Essex	1,595	157	192	405	368	237	236
5PT Suffolk	1,253	122	154	343	259	161	214
5PV West Essex	1,008	94	103	280	202	149	180
5P4 West Hertfordshire	1,777	134	181	454	373	271	364

Table 10a Legal abortions: numbers by Primary Care Organisation: England, Local Health Board: Wales, by age, 2009

Residents

numbers

Primary Care Organisation/ Local Health Board	Total number of abortions	Age ¹					
		Under 18	18-19	20-24	25-29	30-34	35 +
ENGLAND & WALES	189,100	17,916	22,151	54,749	40,634	26,701	26,949
ENGLAND	180,259	16,920	21,037	52,009	38,791	25,633	25,869
LONDON SHA	46,360	2,853	4,018	12,537	11,732	8,074	7,146
5C2 Barking & Dagenham	1,533	91	140	395	379	296	232
5A9 Barnet	1,692	101	142	475	428	273	273
TAK Bexley Care Trust	924	101	97	236	205	131	154
5K5 Brent Teaching	2,052	100	126	537	566	413	310
5A7 Bromley	1,162	124	129	284	247	173	205
5K7 Camden	1,176	51	107	315	328	201	174
5C3 City & Hackney Teaching	1,731	106	131	473	457	336	228
5K9 Croydon	1,886	160	196	502	402	322	304
5HX Ealing	1,834	101	130	479	483	339	302
5C1 Enfield	1,679	117	149	486	379	288	260
5A8 Greenwich Teaching	1,627	106	152	454	394	277	244
5H1 Hammersmith & Fulham	1,231	70	86	370	341	203	161
5C9 Haringey Teaching	1,502	88	136	422	429	224	203
5K6 Harrow	1,099	52	99	259	284	198	207
5A4 Havering	1,044	104	117	322	218	150	133
5AT Hillingdon	1,434	88	168	408	320	243	207
5HY Hounslow	1,504	87	124	382	379	277	255
5K8 Islington	1,197	72	96	354	346	193	136
5LA Kensington & Chelsea	780	24	49	204	192	172	139
5A5 Kingston	747	40	91	233	154	114	115
5LD Lambeth	2,284	124	180	613	613	406	348
5LF Lewisham	2,027	132	188	549	480	358	320
5C5 Newham	2,134	107	158	610	587	368	304
5NA Redbridge	1,534	91	139	376	400	276	252
5M6 Richmond & Twickenham	547	35	45	121	103	110	133
5LE Southwark	2,436	151	216	640	608	454	367
5M7 Sutton & Merton	1,706	134	185	443	404	269	271
5C4 Tower Hamlets	1,506	76	113	490	440	230	157
5NC Waltham Forest	1,773	109	144	456	490	284	290
5LG Wandsworth	1,424	63	97	359	379	268	258
5LC Westminster	1,155	48	88	290	297	228	204
SOUTH EAST COAST SHA	12,996	1,275	1,579	3,593	2,594	1,857	2,098
5LQ Brighton & Hove City	1,307	83	138	428	277	184	197
5P7 East Sussex Downs & Weald	829	101	108	213	145	117	145
5QA Eastern & Coastal Kent	2,248	244	269	675	424	310	326
5P8 Hastings & Rother	515	65	73	147	101	64	65
5L3 Medway	1,037	108	126	286	232	154	131
5P5 Surrey	2,900	236	351	749	564	434	566
5P9 West Kent	2,006	198	234	542	408	298	326
5P6 West Sussex	2,154	240	280	553	443	296	342
SOUTH CENTRAL SHA	11,091	1,006	1,331	3,071	2,252	1,631	1,800
5QG Berkshire East	1,325	76	138	338	328	233	212
5QF Berkshire West	1,141	98	107	295	238	190	213
5QD Buckinghamshire	1,408	130	184	363	250	186	295
5QC Hampshire	2,975	331	414	820	539	397	474
5QT Isle of Wight NHS	262	30	30	80	44	36	42
5CQ Milton Keynes	1,018	81	110	272	228	178	149
5QE Oxfordshire	1,293	131	130	351	264	195	222
5FE Portsmouth City Teaching	763	62	107	243	154	102	95
5L1 Southampton City	906	67	111	309	207	114	98

Table 10a Legal abortions: numbers by Primary Care Organisation: England, Local Health Board: Wales, by age, 2009

Residents

numbers

Primary Care Organisation/ Local Health Board	Total number of abortions	Age ¹					
		Under 18	18-19	20-24	25-29	30-34	35 +
ENGLAND & WALES	189,100	17,916	22,151	54,749	40,634	26,701	26,949
ENGLAND	180,259	16,920	21,037	52,009	38,791	25,633	25,869
SOUTH WEST SHA	13,035	1,456	1,778	3,742	2,410	1,678	1,971
5FL Bath & North East Somerset	391	40	47	115	69	51	69
5QN Bournemouth & Poole Teaching	1,072	93	150	314	202	157	156
5QJ Bristol	1,539	148	180	512	317	193	189
5QP Cornwall & Isles of Scilly	1,077	118	172	317	195	131	144
5QQ Devon	1,571	191	241	424	291	176	248
5QM Dorset	807	99	132	223	129	104	120
5QH Gloucestershire	1,426	155	179	420	264	182	226
5M8 North Somerset	445	63	43	121	65	75	78
5F1 Plymouth Teaching	741	62	107	250	150	82	90
5QL Somerset	1,089	158	144	269	199	146	173
5A3 South Gloucestershire	630	63	95	190	107	84	91
5K3 Swindon	735	64	82	192	162	110	125
TAL Torbay	451	69	69	122	71	57	63
5QK Wiltshire	1,061	133	137	273	189	130	199
WALES	8,841	996	1,114	2,740	1,843	1,068	1,080
6B1 Angelsey	211	26	30	55	44	25	31
6C2 Blaenau Gwent	184	20	23	61	41	23	16
6B3 Bridgend	365	49	41	108	85	46	36
6B2 Caerphilly	518	59	50	157	118	80	54
6A8 Cardiff	1,253	121	136	442	277	150	127
6B7 Carmarthen	392	59	52	108	68	49	56
6A4 Ceredigion	124	18	18	43	21	9	15
6A7 Conwy	339	33	42	98	68	46	52
6C1 Denbighshire	287	37	41	83	57	36	33
6B5 Flintshire	445	45	66	120	91	49	74
6A2 Gwynedd	335	37	34	112	60	35	57
6B8 Merthyr Tydfil	168	25	22	56	36	14	15
6A1 Monmouth	153	17	18	38	28	16	36
6A5 Neath & Port Talbot	397	48	46	116	79	63	45
6B9 Newport	503	55	64	150	103	55	76
6A3 Pembroke	300	45	47	73	68	28	39
6C4 Powys	253	35	40	63	44	38	33
6A9 Rhondda, Cynon, Taff	782	74	103	257	186	79	83
6A6 Swansea	738	79	104	245	155	80	75
6B6 The Vale of Glamorgan	350	33	52	122	62	42	39
6C3 Torfaen	306	34	32	104	58	44	34
6B4 Wrexham	438	47	53	129	94	61	54

¹ Age not stated have been distributed pro-rata across age group 20-24

Table 10b Legal abortions: rates by Primary Care Organisation: England, Local Health Board: Wales, by age, 2009

Residents rates per 1,000 women

Primary Care Organisation/ Local Health Board	Total number of abortions	Rate per 1000 women resident aged 15-44 ASR ²	Age ¹					
			Under 18	18-19	20-24	25-29	30-34	35 +
ENGLAND AND WALES	189,100	17.5	17.6	31.6	30.0	22.8	15.7	6.6
ENGLAND	180,259	17.6	17.7	31.8	30.2	22.9	15.8	6.7
NORTH EAST SHA	7,220	14	19	28	24	18	12	4
5ND County Durham	1,147	12	15	20	20	15	11	4
5J9 Darlington	277	15	22	30	24	20	14	4
5KF Gateshead	457	13	20	29	21	16	10	3
5D9 Hartlepool	340	19	24	37	37	21	17	5
5KM Middlesbrough	499	17	22	30	27	24	13	5
5D7 Newcastle	979	15	21	25	18	17	17	7
5E1 North Tees	602	16	17	35	28	22	13	5
5D8 North Tyneside	591	16	18	30	30	21	12	5
TAC Northumberland	698	14	14	26	28	19	11	4
5QR Redcar & Cleveland	373	15	24	28	25	18	13	3
5KG South Tyneside	377	13	23	33	22	16	8	3
5KL Sunderland Teaching	880	16	21	35	31	16	14	3
NORTH WEST SHA	24,874	18	20	35	32	24	16	6
5HG Ashton, Leigh & Wigan	1,048	18	24	42	36	18	14	5
5CC Blackburn & Darwen Teaching	484	17	13	30	28	26	17	6
5HP Blackpool	530	21	20	46	38	27	18	6
5HQ Bolton	1,009	20	18	41	41	26	15	6
5JX Bury	701	20	18	43	40	25	17	6
5NP Central & Eastern Cheshire	1,151	15	13	30	30	20	13	5
5NG Central Lancashire	1,454	17	18	32	31	22	11	6
5NE Cumbria	1,218	15	18	32	28	19	12	4
5NH East Lancashire Teaching	1,169	16	19	32	31	20	12	6
5NM Halton & St Helens	1,086	19	22	32	35	26	15	6
5NQ Heywood, Middleton & Rochdale	790	20	20	35	35	27	19	6
5J4 Knowsley	703	23	25	39	40	33	20	6
5NL Liverpool	2,180	21	25	35	32	26	21	8
5NT Manchester	2,895	23	30	36	30	26	27	11
5NF North Lancashire Teaching	824	13	17	26	22	18	10	4
5J5 Oldham	772	18	23	37	30	22	17	5
5F5 Salford Teaching	1,002	20	21	35	32	30	19	6
5NJ Sefton	905	19	17	34	35	29	17	5
5F7 Stockport	895	18	18	34	31	25	16	5
5LH Tameside & Glossop	974	20	28	39	36	27	12	6
5NR Trafford	747	20	17	46	38	23	13	7
5J2 Warrington	691	19	21	35	36	24	14	7
5NN West Cheshire	596	14	16	28	21	20	11	5
5NK Wirral	1,050	19	17	34	36	25	18	5
YORKSHIRE & THE HUMBER SHA	16,388	15	18	29	26	20	13	5
5JE Barnsley	695	17	20	30	30	24	14	4
5NY Bradford & Airedale Teaching	1,721	16	16	27	28	22	14	6
5J6 Calderdale	709	19	19	43	35	25	16	5
5N5 Doncaster	1,125	21	22	35	39	31	18	6
5NW East Riding of Yorkshire	662	13	15	24	25	16	10	4
5NX Hull Teaching	927	15	18	32	26	19	12	5
5N2 Kirklees	1,291	16	20	30	26	21	15	5
5N1 Leeds	2,884	15	20	29	20	17	15	8
5AN North East Lincolnshire	549	18	28	31	34	26	12	4
5EF North Lincolnshire	403	15	18	33	28	18	13	4
5NV North Yorkshire & York	1,719	12	12	22	21	17	11	4
5H8 Rotherham	807	17	17	29	35	22	12	6
5N4 Sheffield	1,841	15	20	29	22	19	13	6
5N3 Wakefield District	1,055	18	21	33	31	25	14	5

Table 10b Legal abortions: rates by Primary Care Organisation: England, Local Health Board: Wales, by age, 2009

Residents rates per 1,000 women

Primary Care Organisation/ Local Health Board	Total number of abortions	Rate per 1000 women resident aged 15-44 ASR ²	Age ¹					
			Under 18	18-19	20-24	25-29	30-34	35 +
ENGLAND AND WALES	189,100	17.5	17.6	31.6	30.0	22.8	15.7	6.6
ENGLAND	180,259	17.6	17.7	31.8	30.2	22.9	15.8	6.7
EAST MIDLANDS SHA	11,904	14	15	27	24	18	12	5
5ET Bassetlaw	279	15	15	39	26	20	13	4
5N7 Derby City	815	16	18	32	25	24	12	5
5N6 Derbyshire County	1,520	12	13	25	23	15	11	4
5PC Leicester City	1,374	18	14	29	28	26	20	8
5PA Leicestershire County & Rutland	1,628	13	14	22	23	17	11	5
5N9 Lincolnshire	1,538	13	16	27	23	17	10	4
5PD Northamptonshire Teaching	2,095	16	17	29	31	20	14	6
5EM Nottingham City	1,125	14	20	24	18	15	16	6
5N8 Nottinghamshire County	1,530	13	14	26	24	15	10	4
WEST MIDLANDS SHA	20,180	19	20	35	34	24	17	7
5PG Birmingham East & North	2,010	23	25	43	41	28	22	8
5MD Coventry Teaching	1,841	26	28	40	40	34	27	12
5PE Dudley	941	17	17	34	30	20	13	7
5MX Heart of Birmingham Teaching	1,872	26	22	38	37	32	32	13
5CN Herefordshire	459	17	17	27	33	21	15	6
5PH North Staffordshire	577	15	16	27	26	19	12	6
5PF Sandwell	1,257	21	23	40	38	27	19	7
5M2 Shropshire County	617	14	16	24	28	14	12	5
TAM Solihull	632	17	15	34	33	22	13	6
5M1 South Birmingham	1,492	18	22	37	27	22	18	7
5PK South Staffordshire	1,874	18	20	37	33	24	13	5
5PJ Stoke on Trent	879	17	19	32	33	20	12	6
5MK Telford & Wrekin	564	18	22	31	32	25	16	5
5M3 Walsall Teaching	1,063	22	27	41	37	27	18	7
5PM Warwickshire	1,699	18	18	35	31	23	14	7
5MV Wolverhampton City	1,126	24	22	42	41	29	23	9
5PL Worcestershire	1,277	14	14	28	27	15	10	5
EAST OF ENGLAND SHA	16,211	15	15	28	26	20	13	6
5P2 Bedfordshire	1,123	15	17	29	27	18	12	5
5PP Cambridgeshire	1,292	11	14	17	16	14	9	5
5P3 East & North Hertfordshire	1,672	16	13	30	29	20	13	7
5PR Great Yarmouth & Waveney	560	16	17	27	30	23	15	4
5GC Luton	986	23	17	44	36	31	25	9
5PX Mid Essex	922	14	15	23	25	19	10	6
5PQ Norfolk	1,591	12	12	21	21	15	10	5
5PW North East Essex	723	12	14	25	19	14	10	4
5PN Peterborough	695	21	19	41	42	26	16	8
5P1 South East Essex	1,014	17	15	37	29	22	15	7
5PY South West Essex	1,595	21	21	40	34	28	17	7
5PT Suffolk	1,253	12	11	23	22	16	10	5
5PV West Essex	1,008	20	18	31	37	26	18	8
5P4 West Hertfordshire	1,777	18	13	31	33	22	15	8

Table 10b Legal abortions: rates by Primary Care Organisation: England, Local Health Board: Wales, by age, 2009

Residents rates per 1,000 women

Primary Care Organisation/ Local Health Board	Total number of abortions	Rate per 1000 women resident aged 15-44 ASR ²	Age ¹					
			Under 18	18-19	20-24	25-29	30-34	35 +
ENGLAND AND WALES	189,100	17.5	17.6	31.6	30.0	22.8	15.7	6.6
ENGLAND	180,259	17.6	17.7	31.8	30.2	22.9	15.8	6.7
LONDON SHA	46,360	26	23	46	45	32	23	12
5C2 Barking & Dagenham	1,533	40	26	69	64	54	46	17
5A9 Barnet	1,692	25	17	41	47	33	21	10
TAK Bexley Care Trust	924	21	22	33	34	31	19	9
5K5 Brent Teaching	2,052	31	23	40	50	43	35	15
5A7 Bromley	1,162	21	22	38	37	27	17	8
5K7 Camden	1,176	17	19	35	26	19	13	9
5C3 City & Hackney Teaching	1,731	30	31	52	54	34	29	12
5K9 Croydon	1,886	27	24	48	48	33	26	10
5HX Ealing	1,834	26	21	41	44	33	24	12
5C1 Enfield	1,679	28	21	45	52	35	27	11
5A8 Greenwich Teaching	1,627	31	29	55	56	38	28	13
5H1 Hammersmith & Fulham	1,231	27	33	51	49	30	20	12
5C9 Haringey Teaching	1,502	28	25	58	51	36	20	10
5K6 Harrow	1,099	25	13	39	39	37	25	12
5A4 Havering	1,044	25	23	42	47	32	22	8
5AT Hillingdon	1,434	25	19	44	41	34	27	10
5HY Hounslow	1,504	29	24	50	46	36	28	15
5K8 Islington	1,197	22	29	43	38	25	17	9
5LA Kensington & Chelsea	780	18	12	29	31	21	19	9
5A5 Kingston	747	20	15	44	34	24	17	9
5LD Lambeth	2,284	34	33	70	58	34	26	16
5LF Lewisham	2,027	32	31	62	58	38	27	14
5C5 Newham	2,134	33	23	47	54	47	33	17
5NA Redbridge	1,534	28	17	45	44	39	27	13
5M6 Richmond & Twickenham	547	15	13	25	27	18	14	8
5LE Southwark	2,436	35	40	76	56	35	30	16
5M7 Sutton & Merton	1,706	21	21	44	38	25	15	8
5C4 Tower Hamlets	1,506	23	23	40	44	27	16	10
5NC Waltham Forest	1,773	36	28	56	62	53	29	15
5LG Wandsworth	1,424	19	23	39	33	17	12	10
5LC Westminster	1,155	18	22	30	24	18	16	11
SOUTH EAST COAST SHA	12,996	17	16	30	30	22	15	6
5LQ Brighton & Hove City	1,307	20	20	34	34	26	19	9
5P7 East Sussex Downs & Weald	829	17	16	29	28	21	16	6
5QA Eastern & Coastal Kent	2,248	17	17	27	29	21	16	6
5P8 Hastings & Rother	515	19	20	34	36	27	15	5
5L3 Medway	1,037	21	20	39	35	28	19	7
5P5 Surrey	2,900	15	11	29	27	18	12	6
5P9 West Kent	2,006	17	15	30	32	22	14	6
5P6 West Sussex	2,154	17	17	32	30	23	14	6
SOUTH CENTRAL SHA	11,091	14	13	25	23	18	13	6
5QG Berkshire East	1,325	16	10	27	27	24	16	7
5QF Berkshire West	1,141	12	11	17	18	16	12	6
5QD Buckinghamshire	1,408	16	13	32	29	19	12	7
5QC Hampshire	2,975	13	14	27	24	16	11	5
5QT Isle of Wight NHS	262	12	12	19	24	15	12	4
5CQ Milton Keynes	1,018	22	18	39	39	28	20	8
5QE Oxfordshire	1,293	10	12	15	15	13	10	5
5FE Portsmouth City Teaching	763	15	19	31	21	16	15	7
5L1 Southampton City	906	14	18	24	21	17	14	7

Table 10b Legal abortions: rates by Primary Care Organisation: England, Local Health Board: Wales, by age, 2009

Residents		rates per 1,000 women						
Primary Care Organisation/ Local Health Board	Total number of abortions	Rate per 1000 women resident aged 15-44 ASR ²	Age ¹					
			Under 18	18-19	20-24	25-29	30-34	35 +
ENGLAND AND WALES	189,100	17.5	17.6	31.6	30.0	22.8	15.7	6.6
ENGLAND	180,259	17.6	17.7	31.8	30.2	22.9	15.8	6.7
SOUTH WEST SHA	13,035	14	15	27	24	17	12	5
5FL Bath & North East Somerset	391	10	13	15	14	13	11	6
5QN Bournemouth & Poole Teaching	1,072	18	17	35	28	22	17	7
5QJ Bristol	1,539	14	23	29	21	15	12	7
5QP Cornwall & Isles of Scilly	1,077	13	12	28	23	16	10	4
5QQ Devon	1,571	13	14	25	20	17	10	5
5QM Dorset	807	15	12	31	29	18	13	4
5QH Gloucestershire	1,426	14	14	24	27	18	12	5
5M8 North Somerset	445	14	18	20	25	13	14	5
5F1 Plymouth Teaching	741	13	14	27	21	17	12	5
5QL Somerset	1,089	13	15	22	23	17	12	5
5A3 South Gloucestershire	630	13	13	29	26	15	11	4
5K3 Swindon	735	19	18	36	33	25	15	8
TAL Torbay	451	21	28	46	35	24	18	7
5QK Wiltshire	1,061	15	14	26	29	19	11	6
WALES	8,841	16	17	28	27	21	13	5
6B1 Angelsey	211	19	19	36	30	27	15	7
6C2 Blaenau Gwent	184	14	13	23	27	21	13	3
6B3 Bridgend	365	16	19	25	28	24	12	4
6B2 Caerphilly	518	16	17	23	29	23	16	4
6A8 Cardiff	1,253	15	21	23	22	19	15	6
6B7 Carmarthen	392	13	17	25	22	15	11	5
6A4 Ceredigion	124	8	13	12	11	9	6	3
6A7 Conwy	339	21	15	36	39	28	18	7
6C1 Denbighshire	287	18	19	35	34	25	15	5
6B5 Flintshire	445	17	15	39	29	22	12	6
6A2 Gwynedd	335	15	17	19	26	19	13	8
6B8 Merthyr Tydfil	168	16	22	29	30	22	10	4
6A1 Monmouth	153	12	9	19	20	17	9	5
6A5 Neath & Port Talbot	397	16	18	27	28	22	17	5
6B9 Newport	503	18	18	33	30	26	14	7
6A3 Pembroke	300	16	18	33	26	25	10	5
6C4 Powys	253	14	13	28	23	18	13	4
6A9 Rhondda, Cynon, Taff	782	17	16	34	32	24	12	5
6A6 Swansea	738	16	20	30	26	22	13	5
6B6 The Vale of Glamorgan	350	16	13	32	35	19	12	4
6C3 Torfaen	306	18	18	27	36	23	18	5
6B4 Wrexham	438	18	19	33	33	23	16	5

¹ Age not stated have been distributed pro-rata across age group 20-24² Rates for PCOs and LHBs are based on 2008 mid year population estimates³ Rates for under 16 are based on populations 13-15

Rates for all ages, under 18 and 35 and over are based on populations 15-44, 15-17 and 35-44 respectively

Table 11 Legal abortions: purchaser, gestation, Sexual Health Indicator and repeat abortions, by Primary Care Organisation, England and Local Health Board, Wales, 2009

Residents											percentages
Primary Care Organisation/ Local Health Board	Purchaser (%)			Gestation weeks (%)			Sexual Health Indicator			Repeat abortions in women aged under 25	
	NHS Funded		Privately Funded	3-9	10-12	13+	Total NHS funded abortions	NHS funded abortions at under 10 weeks	Percentage of all NHS funded abortions under 10 weeks		
	NHS Hospital	Independent Sector									
ENGLAND & WALES	38	56	6	75	16	9	177,638	131,487	74.0	24.5	
ENGLAND	37	57	6	75	16	9	169,445	126,051	74.4	24.7	
NORTH EAST SHA	95	2	3	71	19	10	6,974	4,931	71	19	
5ND County Durham	95	1	4	70	20	10	1,098	763	69	17	
5J9 Darlington	95	79	14	6	266	211	79	19	
5KF Gateshead	94	2	4	71	14	15	438	305	70	16	
5D9 Hartlepool	97	75	14	11	332	248	75	25	
5KM Middlesbrough	96	70	17	13	482	335	70	23	
5D7 Newcastle	94	3	3	71	20	8	954	677	71	15	
5E1 North Tees	95	78	15	7	575	452	79	28	
5D8 North Tyneside	96	73	16	11	577	422	73	23	
TAC Northumberland	95	3	2	73	17	10	682	496	73	17	
5QR Redcar & Cleveland	95	68	22	10	353	238	67	22	
5KG South Tyneside	96	73	18	9	368	266	72	15	
5KL Sunderland Teaching	95	1	4	62	26	12	849	518	61	17	
NORTH WEST SHA	51	45	4	75	16	9	23,953	17,833	74	23	
5HG Ashton, Leigh & Wigan	50	47	3	70	19	12	1,018	704	69	16	
5CC Blackburn & Darwen Teaching	90	4	6	75	16	9	454	337	74	25	
5HP Blackpool	5	93	2	77	10	12	517	398	77	25	
5HQ Bolton	50	47	3	74	16	10	976	717	73	21	
5JX Bury	39	56	5	79	13	8	666	522	78	33	
5NP Central & Eastern Cheshire	40	52	7	66	21	12	1,069	692	65	22	
5NG Central Lancashire	21	75	4	78	14	8	1,400	1,086	78	22	
5NE Cumbria	93	5	2	75	17	8	1,195	895	75	21	
5NH East Lancashire Teaching	91	4	5	79	14	7	1,107	865	78	21	
5NM Halton & St Helens	40	58	2	76	16	8	1,062	805	76	22	
5NQ Heywood, Middleton & Rochdale	60	37	3	78	14	8	765	598	78	19	
5J4 Knowsley	85	14	2	71	20	9	691	487	70	24	
5NL Liverpool	83	14	2	71	20	9	2,126	1,506	71	24	
5NT Manchester	27	69	3	80	12	8	2,805	2,240	80	27	
5NF North Lancashire Teaching	35	60	4	75	16	9	789	594	75	20	
5J5 Oldham	66	30	5	79	13	8	736	577	78	20	
5F5 Salford Teaching	61	33	5	68	21	11	947	641	68	25	
5NJ Sefton	84	13	3	70	21	9	877	610	70	21	
5F7 Stockport	36	59	5	73	16	11	851	612	72	26	
5LH Tameside & Glossop	56	42	2	78	14	8	952	744	78	20	
5NR Trafford	12	84	4	79	13	8	714	559	78	27	
5J2 Warrington	3	91	6	73	19	9	648	465	72	18	
5NN West Cheshire	61	35	4	71	18	11	573	402	70	22	
5NK Wirral	44	53	3	77	14	9	1,015	777	77	26	
YORKSHIRE & THE HUMBER SHA	57	38	5	72	19	9	15,599	11,031	71	22	
5JE Barnsley	75	20	5	58	30	12	663	381	57	23	
5NY Bradford & Airedale Teaching	73	22	5	67	24	9	1,631	1,074	66	19	
5J6 Calderdale	91	2	7	82	13	5	657	529	81	18	
5N5 Doncaster	4	95	2	80	12	8	1,107	883	80	28	
5NW East Riding of Yorkshire	80	11	8	55	35	9	606	325	54	15	
5NX Hull Teaching	86	10	4	50	40	10	892	433	49	18	
5N2 Kirklees	57	38	5	80	12	9	1,221	965	79	22	
5N1 Leeds	28	67	5	78	13	9	2,727	2,110	77	22	
5AN North East Lincolnshire	96	63	23	15	538	335	62	22	
5EF North Lincolnshire	72	63	21	16	396	247	62	21	
5NV North Yorkshire & York	40	53	7	72	19	9	1,605	1,137	71	21	
5H8 Rotherham	92	4	4	69	20	10	773	528	68	24	
5N4 Sheffield	93	3	4	73	18	10	1,767	1,269	72	22	
5N3 Wakefield District	3	93	4	81	12	8	1,016	815	80	25	

Table 11 Legal abortions: purchaser, gestation, Sexual Health Indicator and repeat abortions, by Primary Care Organisation, England and Local Health Board, Wales, 2009

Residents											percentages
Primary Care Organisation/ Local Health Board	Purchaser (%)			Gestation weeks (%)			Sexual Health Indicator			Repeat abortions in women aged under 25	
	NHS Funded		Privately Funded	3-9	10-12	13+	Total NHS funded abortions	NHS funded abortions at under 10 weeks	Percentage of all NHS funded abortions under 10 weeks		
	NHS Hospital	Independent Sector									
ENGLAND & WALES	38	56	6	75	16	9	177,638	131,487	74.0	24.5	
ENGLAND	37	57	6	75	16	9	169,445	126,051	74.4	24.7	
EAST MIDLANDS SHA	74	22	4	66	24	10	11,409	7,402	65	20	
5ET Bassetlaw	86	70	22	8	274	192	70	23	
5N7 Derby City	93	67	26	7	781	521	67	19	
5N6 Derbyshire County	84	11	5	69	21	10	1,445	988	68	19	
5PC Leicester City	72	24	4	66	25	10	1,319	851	65	24	
5PA Leicestershire County & Rutland	58	37	5	71	20	9	1,552	1,087	70	20	
5N9 Lincolnshire	91	4	5	59	30	11	1,455	850	58	17	
5PD Northamptonshire Teaching	51	46	3	63	25	12	2,022	1,260	62	20	
5EM Nottingham City	76	21	3	68	23	9	1,092	742	68	23	
5N8 Nottinghamshire County	82	14	4	63	26	11	1,469	911	62	18	
WEST MIDLANDS SHA	7	90	3	76	14	10	19,576	14,870	76	25	
5PG Birmingham East & North	1	97	1	80	12	8	1,983	1,590	80	29	
5MD Coventry Teaching	2	97	1	77	13	11	1,824	1,394	76	31	
5PE Dudley	1	96	3	80	13	7	913	735	81	28	
5MX Heart of Birmingham Teaching	1	97	2	82	10	8	1,832	1,503	82	26	
5CN Herefordshire	81	14	5	78	14	8	438	340	78	17	
5PH North Staffordshire	3	92	5	76	14	11	549	411	75	20	
5PF Sandwell	3	93	4	76	13	12	1,210	913	75	29	
5M2 Shropshire County	..	94	..	72	17	12	607	434	71	23	
TAM Solihull	2	94	4	83	9	8	607	505	83	27	
5M1 South Birmingham	2	95	4	79	11	10	1,439	1,137	79	25	
5PK South Staffordshire	5	92	4	64	23	13	1,802	1,123	62	22	
5PJ Stoke on Trent	2	94	4	76	13	11	846	641	76	21	
5MK Telford & Wrekin	..	97	..	71	16	12	558	398	71	22	
5M3 Walsall Teaching	57	41	2	82	11	8	1,045	853	82	24	
5PM Warwickshire	2	97	1	75	14	11	1,676	1,252	75	23	
5MV Wolverhampton City	4	90	7	73	17	10	1,052	756	72	28	
5PL Worcestershire	2	92	6	74	16	10	1,195	885	74	21	
EAST OF ENGLAND SHA	44	50	6	75	16	9	15,254	11,344	74	24	
5P2 Bedfordshire	52	44	5	67	20	13	1,070	704	66	22	
5PP Cambridgeshire	79	15	6	73	16	11	1,214	886	73	20	
5P3 East & North Hertfordshire	8	86	6	82	10	9	1,572	1,281	81	30	
5PR Great Yarmouth & Waveney	88	10	3	48	40	12	546	256	47	20	
5GC Luton	23	75	3	78	12	9	961	753	78	24	
5PX Mid Essex	19	74	7	76	15	8	860	647	75	20	
5PQ Norfolk	91	6	3	76	17	8	1,543	1,164	75	21	
5PW North East Essex	67	24	10	76	16	8	653	485	74	21	
5PN Peterborough	68	30	1	68	21	10	685	467	68	21	
5P1 South East Essex	34	58	7	81	13	6	940	759	81	28	
5PY South West Essex	18	75	6	80	11	9	1,492	1,192	80	25	
5PT Suffolk	88	3	9	59	31	10	1,139	636	56	19	
5PV West Essex	24	67	9	82	11	8	920	752	82	29	
5P4 West Hertfordshire	8	86	7	82	10	8	1,659	1,362	82	26	

Table 11 Legal abortions: purchaser, gestation, Sexual Health Indicator and repeat abortions, by Primary Care Organisation, England and Local Health Board, Wales, 2009

Residents											percentages
Primary Care Organisation/ Local Health Board	Purchaser (%)		Gestation weeks (%)			Sexual Health Indicator			Repeat abortions in women aged under 25		
	NHS Funded		Privately Funded	3-9	10-12	13+	Total NHS funded abortions	NHS funded abortions at under 10 weeks		Percentage of all NHS funded abortions under 10 weeks	
	NHS Hospital	Indep- endent Sector									
ENGLAND & WALES	38	56	6	75	16	9	177,638	131,487	74.0	24.5	
ENGLAND	37	57	6	75	16	9	169,445	126,051	74.4	24.7	
LONDON SHA	19	69	11	78	13	9	41,062	31,769	77	32	
5C2 Barking & Dagenham	1	92	6	83	9	8	1,438	1,197	83	35	
5A9 Barnet	2	89	10	83	10	7	1,529	1,265	83	34	
TAK Bexley Care Trust	4	90	6	79	12	9	864	679	79	32	
5K5 Brent Teaching	3	88	9	83	9	8	1,874	1,554	83	32	
5A7 Bromley	3	89	7	79	12	9	1,076	842	78	34	
5K7 Camden	17	67	16	76	14	10	984	728	74	28	
5C3 City & Hackney Teaching	77	8	15	72	18	10	1,472	1,027	70	34	
5K9 Croydon	2	93	5	81	11	9	1,787	1,433	80	36	
5HX Ealing	2	75	23	65	20	15	1,417	824	58	29	
5C1 Enfield	11	73	15	71	18	11	1,419	985	69	34	
5A8 Greenwich Teaching	6	88	6	80	11	9	1,530	1,219	80	34	
5H1 Hammersmith & Fulham	10	78	13	80	12	9	1,077	844	78	32	
5C9 Haringey Teaching	14	68	18	68	19	14	1,231	805	65	34	
5K6 Harrow	1	91	8	83	9	8	1,016	849	84	35	
5A4 Havering	1	92	7	84	9	8	972	808	83	35	
5AT Hillingdon	5	86	9	83	10	7	1,308	1,086	83	35	
5HY Hounslow	5	82	13	79	12	9	1,313	1,021	78	29	
5K8 Islington	16	67	17	69	21	10	996	653	66	35	
5LA Kensington & Chelsea	66	7	27	83	10	7	571	468	82	31	
5A5 Kingston	3	90	7	82	11	7	693	561	81	27	
5LD Lambeth	9	83	8	80	11	8	2,104	1,678	80	32	
5LF Lewisham	12	84	5	81	11	8	1,934	1,554	80	34	
5C5 Newham	79	5	16	75	16	8	1,796	1,320	73	28	
5NA Redbridge	4	87	9	83	9	8	1,396	1,147	82	33	
5M6 Richmond & Twickenham	36	48	16	82	11	7	461	373	81	21	
5LE Southwark	13	80	7	81	11	9	2,257	1,805	80	32	
5M7 Sutton & Merton	37	54	8	76	14	10	1,561	1,168	75	29	
5C4 Tower Hamlets	77	9	13	77	16	7	1,306	986	75	29	
5NC Waltham Forest	3	87	10	79	11	9	1,597	1,260	79	35	
5LG Wandsworth	32	53	15	77	13	10	1,213	915	75	31	
5LC Westminster	46	30	25	83	10	7	870	715	82	30	
SOUTH EAST COAST SHA	9	87	4	79	12	9	12,472	9,806	79	25	
5LQ Brighton & Hove City	1	96	3	84	9	7	1,271	1,068	84	27	
5P7 East Sussex Downs & Weald	3	95	3	77	13	10	807	620	77	22	
5QA Eastern & Coastal Kent	3	93	4	77	13	10	2,167	1,676	77	26	
5P8 Hastings & Rother	33	65	2	77	14	10	505	386	76	25	
5L3 Medway	3	93	4	79	10	11	994	781	79	28	
5P5 Surrey	3	92	5	81	10	8	2,742	2,228	81	25	
5P9 West Kent	3	91	6	78	11	10	1,895	1,482	78	25	
5P6 West Sussex	36	61	3	75	17	8	2,091	1,565	75	22	
SOUTH CENTRAL SHA	27	69	4	75	14	10	10,615	7,936	75	24	
5QG Berkshire East	2	93	5	79	11	10	1,254	985	79	29	
5QF Berkshire West	2	90	7	79	10	11	1,058	832	79	29	
5QD Buckinghamshire	3	89	8	73	15	12	1,296	936	72	23	
5QC Hampshire	30	68	2	76	14	10	2,918	2,213	76	21	
5QT Isle of Wight NHS	88	8	4	65	25	10	252	161	64	16	
5CQ Milton Keynes	3	92	4	70	18	12	975	674	69	23	
5QE Oxfordshire	31	64	5	78	11	10	1,233	962	78	27	
5FE Portsmouth City Teaching	93	5	2	77	15	8	750	574	77	24	
5L1 Southampton City	67	30	3	69	21	10	879	599	68	22	

Table 11 Legal abortions: purchaser, gestation, Sexual Health Indicator and repeat abortions, by Primary Care Organisation, England and Local Health Board, Wales, 2009

Residents

percentages

Primary Care Organisation/ Local Health Board	Purchaser (%)		Gestation weeks (%)			Sexual Health Indicator			Repeat abortions in women aged under 25	
	NHS Funded		Privately Funded	3-9	10-12	13+	Total NHS funded abortions	NHS funded abortions at under 10 weeks		Percentage of all NHS funded abortions under 10 weeks
	NHS Hospital	Independent Sector								
ENGLAND & WALES	38	56	6	75	16	9	177,638	131,487	74.0	24.5
ENGLAND	37	57	6	75	16	9	169,445	126,051	74.4	24.7
SOUTH WEST SHA	52	45	4	73	17	9	12,531	9,129	73	20
5FL Bath & North East Somerset	65	27	8	70	19	11	361	245	68	17
5QN Bournemouth & Poole Teaching	40	59	1	76	13	11	1,058	803	76	23
5QJ Bristol	50	46	4	80	11	8	1,473	1,175	80	21
5QP Cornwall & Isles of Scilly	59	38	3	63	27	10	1,042	645	62	18
5QQ Devon	72	25	3	70	23	7	1,519	1,058	70	18
5QM Dorset	24	75	1	72	18	10	796	567	71	19
5QH Gloucestershire	88	7	6	68	21	11	1,345	894	66	19
5M8 North Somerset	52	42	7	77	11	11	416	318	76	20
5F1 Plymouth Teaching	93	5	3	72	19	8	720	520	72	20
5QL Somerset	63	32	5	67	20	13	1,038	691	67	19
5A3 South Gloucestershire	44	50	6	83	10	7	590	487	83	23
5K3 Swindon	..	96	..	85	7	7	715	610	85	24
TAL Torbay	..	96	..	74	17	9	446	328	74	26
5QK Wiltshire	15	80	5	78	14	8	1,012	788	78	18
WALES	61	31	7	68	22	10	8,193	5,436	66	20
6B1 Anglesey	..	95	..	76	12	11	207	157	76	19
6C2 Blaenau Gwent	61	77	15	8	175	134	77	17
6B3 Bridgend	92	59	30	11	343	200	58	17
6B2 Caerphilly	63	32	5	73	19	7	490	357	73	18
6A8 Cardiff	76	6	18	58	29	13	1,033	538	52	22
6B7 Carmarthen	93	3	4	59	26	15	375	217	58	20
6A4 Ceredigion	82	118	97	82	16
6A7 Conwy	..	96	..	76	15	10	333	252	76	22
6C1 Denbighshire	..	95	..	77	13	9	282	217	77	22
6B5 Flintshire	6	91	3	77	13	10	432	329	76	17
6A2 Gwynedd	8	88	4	74	14	12	323	238	74	17
6B8 Merthyr Tydfil	85	7	9	72	21	7	153	109	71	13
6A1 Monmouth	54	34	12	73	134	99	74	22
6A5 Neath & Port Talbot	93	3	4	62	28	10	382	232	61	18
6B9 Newport	58	35	6	75	17	7	471	349	74	20
6A3 Pembroke	78	15	7	68	20	12	278	189	68	16
6C4 Powys	79	13	8	77	12	11	234	181	77	26
6A9 Rhondda, Cynon, Taff	86	7	7	58	32	10	728	408	56	22
6A6 Swansea	93	2	5	67	22	11	702	464	66	20
6B6 The Vale of Glamorgan	79	5	16	55	29	16	293	140	48	24
6C3 Torfaen	57	35	8	70	21	9	282	195	69	23
6B4 Wrexham	..	95	..	79	13	8	425	334	79	22

.. Percentages are suppressed where totals are less than 10 (0-9) and where a presented percentage would reveal the suppressed value.

Note: percentages are rounded and may not add up to 100

Table 12a Legal abortions: non residents by country of residence, 2009

	total	percentages
All non-residents	6,643	100%
Country of residence ¹		
United Kingdom		
Northern Ireland	1,123	16.9
Scotland	276	4.2
Isle of Man	111	1.7
Jersey	10	0.2
Guernsey	12	0.2
European countries		
Irish Republic	4,422	66.6
Belgium	9	0.1
Denmark	13	0.2
France	46	0.7
Germany	17	0.3
Gibraltar	10	0.2
Ionian Islands	7	0.1
Italy	161	2.4
Malta	78	1.2
Norway	8	0.1
Poland	20	0.3
Portugal	11	0.2
Romania	5	0.1
Spain	18	0.3
Switzerland	9	0.1
Other	26	0.4
Rest of the world		
Australia	9	0.1
Bahrain	19	0.3
Egypt	6	0.1
Kuwait	17	0.3
Nigeria	5	0.1
Qatar	8	0.1
Saudia Arabia	8	0.1
UAE	116	1.7
USA	10	0.2
Other	53	0.8

¹ Specific countries shown only where there are 5 or more cases

Table 12b Legal abortions: non residents of England and Wales, by (i) age, (ii) statutory grounds and (iii) gestation, 2009

		total	percentages
All non-residents		6,643	100%
(i) Age	Under 16	72	1
	16 - 17	296	4
	18 - 19	465	7
	20 - 24	1,776	27
	25 - 29	1,655	25
	30 - 34	1,162	17
	35 - 39	815	12
	40 and over	402	6
(ii) Statutory grounds	C (alone)	6,484	98
	Other	159	2
(iii) Gestation weeks	3 - 9	4,320	65
	10 - 12	1,104	17
	13 - 19	888	13
	20 and over	331	5

Note: percentages are rounded and may not add to 100

Table 12c Legal abortions, country of residence by age and gestation, 2009

		Scotland	Northern Ireland	Irish Republic
All ages	numbers	276	1,123	4,422
	Under 16	} 30	13	38
	16 - 17		73	155
	18 - 19	24	99	291
	20 - 24	51	326	1234
	25 - 29	65	250	1164
	30 - 34	55	180	759
	35 - 39	34	125	523
	40 & over	17	57	258
Gestation weeks	%	(100%)	(100%)	(100%)
	3 - 9	46	70	68
	10 - 12	9	17	18
	13 - 19	14	11	12
	20 & over	31	2	2

Note: percentages are rounded and may not add up to 100

Appendix A

Changes introduced with the new abortion notification form, following a consultation exercise undertaken in 2000, are shown in the table below. A blank entry in the right hand column indicates an item that remains unchanged.

Notification form 1991-2002	Notification form 2002 onwards – changes to items
-----------------------------	---

Name and address of operating practitioner and certifying practitioner(s)	
---	--

Patient details

Name	Revised: Hospital/clinic number or name
Address	Revised: Postcode or complete address
Date of birth	
Marital status	<i>Single</i> expanded further with sub-category “ <i>single not stated</i> ” added in 2003. Civil partnership added in 2006.
Parity (previous live births, stillbirths, spontaneous miscarriages, legal terminations)	<i>previous live births, stillbirths</i> replaced by previous pregnancies resulting in live birth(s) or stillbirth(s); ectopic pregnancies included with miscarriages
	New item: ethnicity, using 2001 Census categories

Treatment details

Name and address of place of termination	
Whether patient was an NHS case terminated in an approved place under an agency agreement	Revised: whether NHS or privately funded
Gestation period and method of estimation	Revised: method of estimation no longer collected
Statutory grounds for terminating pregnancy	
Medical condition of woman or diagnosis or suspected medical condition of fetus	
Date of admission to place of termination	
Date of termination	
Date of discharge from place of termination	
Method of termination	Feticide now separately identified
Whether selective termination of a multiple pregnancy	
Whether sterilisation performed	No longer collected
Complications prior to notification	Changed: complications prior to discharge
In case of death, date and cause	
	New item: whether chlamydia screening offered

Appendix B

Key recommendations from the National Statistics Disclosure Review

Recommendation 1: Within a release of abortion statistics unsafe cells are defined as being counts of abortions that are:

- zero unless no other value is logically possible
- less than 5 for Government Office Region in England, the country of Wales or any larger geography
- less than 10 for any geography below the Government Office Region in England or the country of Wales
- less than 10 for highly sensitive variables
- associated with either 1 or 2 practitioners
- associated with either 1 or 2 hospitals

The variables that are considered highly sensitive are:

- Young ages (<15)
- Late gestation (over 24 weeks)
- Procedure by gestation
- Medical conditions

Recommendation 2: Simple calculations such as rates or percentages do not necessarily make an unsafe cell safe and should not be used to protect data unless it can be demonstrated that one cannot work back to the original count. In order to keep statistical disclosure control rules clear and consistent for abortion statistics rates or percentages should only be calculated from safe cells.

Recommendation 3: In order to ensure that unsafe cells in the abortion statistics are disguised table design should be used as a preliminary protection method. Redesign should be implemented taking into account the information required by the main users of the data.

Recommendation 4: Statistics should only be constructed using area of residence rather than place of termination thus reducing the risk of disclosure from counts of events that are associated with 1 or 2 practitioners/hospitals.

Recommendation 5: If unsafe cells exist in tables after redesign these should be removed using suppression methods (primary and secondary).

Recommendation 6: In order to avoid resource intensive analysis of disclosure by differencing the abortions data should not in general be published on geographies that are non-coterminous with SHA/region/PCO/LHB or for non-standard variable categories.

Recommendation 7: In order to release more detail some data should be published aggregated over a number of years. To keep the methods for disclosure control clear, consistent and easy to implement the recommendation is made that rolling aggregates are not produced but years are aggregated independently.

Recommendation 8: The guidelines should be implemented for all published outputs of abortion data e.g. in cases where the data published can be used to make direct inferences about abortions. The guidelines should be implemented as soon as possible. The DH and ONS should work together in order to implement these guidelines for the annual bulletin release for 2003 and 2004.

Recommendation 9: Users should be made aware of what constitutes an unsafe cell within the abortion statistics. The user should also be told that the method used to protect the table is predominantly table redesign used to minimise the number of unsafe cells that require suppression. The impact on the quality of the data will be that in some cases less detail will be displayed and suppressions will mean that some information is removed from the table.