

# Health Impact Assessment Tools

*Simple tools for recording the results of the  
Health Impact Assessment*

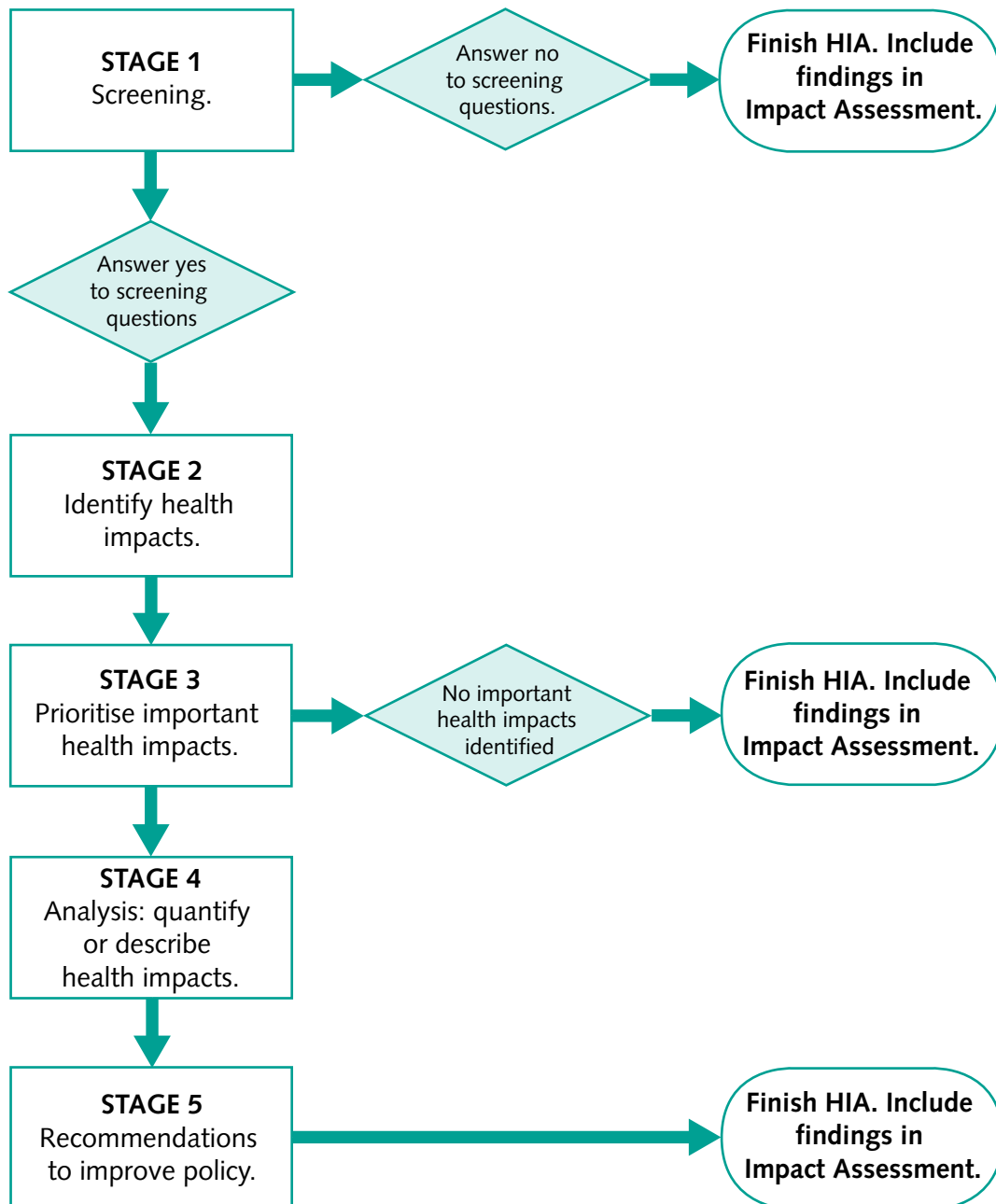
**How to carry out good quality HIAs**

- ✓ **Use HIA screening questions**
- ✓ **Make it evidence-based**
- ✓ **Look for positive health impacts**
- ✓ **Think beyond the health service when considering health**



# Carrying out a Health Impact Assessment

The diagram below gives an overview of the Health Impact Assessment process, and the rest of this section explains the content of each of the 5 stages of HIA.



# Framework for HIA

TABLE 1. Stage 1 Screening

Screening Question	No If there will be no health impact, provide a brief explanation for your response	Yes If there will be health impact(s) provide a brief explanation.
<p><b>Will the proposal have a direct impact on health, mental health and wellbeing?</b></p> <p>For example would it cause ill health, affecting social inclusion, independence and participation?</p> <p>You should consider whether any socioeconomic or equalities groups* will be particularly affected.</p>		
<p><b>Will the policy have an impact on social, economic and environmental living conditions that would indirectly affect health?</b></p> <p>For example would it affect housing, transport, child development, education, good employment opportunities, green space or climate change?</p> <p>You should consider whether any socioeconomic or equalities groups* will be particularly affected.</p>		
<p><b>Will the proposal affect an individual’s ability to improve their own health and wellbeing?</b></p> <p>For example will it affect their ability to be physically active, choose healthy food, reduce drinking and smoking?</p> <p>You should consider whether any socioeconomic or equalities groups* will be particularly affected.</p>		
<p><b>Will there be a change in demand for or access to health and social care services?</b></p> <p>For example: Primary Care, Hospital Care, Community Services, Mental Health and Social Services?</p> <p>You should consider whether any socioeconomic or equalities groups* will be particularly affected.</p>		
<p><b>Will the proposal have an impact on global health?</b> To be added</p>		If yes, go to global health impact assessment tool.
<p>*Equalities groups such as race, gender, health, disability, sexual orientation, age, religion or belief.</p>		

TABLE 2. Stages 2 and 3 Identify and Prioritise health impacts

<b>Stage 2</b> Identify Health Impacts	<b>Answering yes to these questions indicates that this is an important health impact.</b> <b>Be explicit and jot down what expert advice or literature you have used to make your judgement</b>					<b>Stage 3:</b> Prioritise health impacts
Describe the Health Impacts  Will the health impacts affect the whole population or will there be differential impacts within the population? You should consider whether any socioeconomic or equalities groups* will be particularly affected.	Will the health impacts be difficult to remedy or have an irreversible impact?	Will the health impacts be medium to long term?	Are the health impacts likely to generate public concern?	Are the health impacts likely to generate cumulative and/or synergistic impacts?	Combining the answers, on balance will the health impacts have an important positive or negative impact on health.  Provide a brief overview of the reason for your decision on prioritization.	

\*Equalities groups such as race, gender, health, disability, sexual orientation, age, religion or belief.

TABLE 3. Stage 4 Analysis: quantify or describe important health impacts

--

TABLE 4 Stage 5 Recommendations to improve policy

--



© Crown copyright 2010

401334F 1p July 10

Produced by COI for the Department of Health

[www.dh.gov.uk/publications](http://www.dh.gov.uk/publications)